



The effect of a novel herbicide adjuvant in treating Amur honeysuckle (*Lonicera maackii*)

Authors: Rivera, Benjamin J., Meilan, Richard, Scharf, Michael E., Karve, Rucha A, and Jenkins, Michael A.

Source: *Invasive Plant Science and Management*, 15(2) : 81-88

Published By: Weed Science Society of America

URL: <https://doi.org/10.1017/inp.2022.15>

BioOne Complete (complete.BioOne.org) is a full-text database of 200 subscribed and open-access titles in the biological, ecological, and environmental sciences published by nonprofit societies, associations, museums, institutions, and presses.

Your use of this PDF, the BioOne Complete website, and all posted and associated content indicates your acceptance of BioOne's Terms of Use, available at www.bioone.org/terms-of-use.

Usage of BioOne Complete content is strictly limited to personal, educational, and non - commercial use. Commercial inquiries or rights and permissions requests should be directed to the individual publisher as copyright holder.

BioOne sees sustainable scholarly publishing as an inherently collaborative enterprise connecting authors, nonprofit publishers, academic institutions, research libraries, and research funders in the common goal of maximizing access to critical research.

Research Article

Cite this article: Rivera BJ, Meilan R, Scharf ME, Karve RA, and Jenkins MA (2022) The effect of a novel herbicide adjuvant in treating Amur honeysuckle (*Lonicera maackii*). *Invasive Plant Sci. Manag* **15**: 81–88. doi: [10.1017/inp.2022.15](https://doi.org/10.1017/inp.2022.15)

Received: 18 November 2021
Revised: 8 February 2022
Accepted: 3 May 2022
First published online: 12 May 2022

Associate Editor:

Stephen F. Enloe, University of Florida





Keywords:

Control; cut stump; glyphosate; invasive shrub

Author for correspondence:

Benjamin Rivera, Plant and Environmental Sciences Building, University of California Davis, Davis, CA 95616.
(Email: benrivera@ucdavis.edu)

The effect of a novel herbicide adjuvant in treating Amur honeysuckle (*Lonicera maackii*)

Benjamin J. Rivera¹ , Richard Meilan² , Michael E. Scharf³, Rucha A Karve⁴  and Michael A. Jenkins⁵ 

¹Graduate Student, Department of Forestry and Natural Resources, Purdue University, West Lafayette, IN, USA; ²Professor Emeritus, Department of Forestry and Natural Resources, Purdue University, West Lafayette, IN, USA; ³Professor and O.W. Rollins/Orkin Chair, Department of Entomology, Purdue University, West Lafayette, IN, USA; ⁴Lecturer, Department of Biological Science, Purdue University, West Lafayette, IN, USA and ⁵Professor, Department of Forestry and Natural Resources, Purdue University, West Lafayette, IN, USA

Abstract

Invasive woody perennials pose an immense threat to the diversity and function of many ecosystems, including forests in the eastern United States. While herbicide treatments have proven effective in controlling many plant invasions, there is considerable interest in the refinement of herbicide prescriptions to improve efficacy and prevent non-target damage. Adjuvants are widely utilized to improve herbicide efficacy, but research on novel adjuvants is often lacking. Furthermore, adjuvant research has generally focused on enhancement of foliar herbicide absorption, and few studies focus on adjuvant utility for other herbicide delivery techniques such as cut stump treatments. We evaluated 2XL—a cocktail of cellulase enzymes derived from fungi—as a potential herbicide adjuvant for use with glyphosate applied in a cut stump treatment due to its ability to degrade a key component of cell walls. We conducted a field experiment using the cut stump method of treatment (cut surface treated with herbicide) on a problematic invasive shrub, Amur honeysuckle [*Lonicera maackii* (Rupr.) Herder]. We tested combinations of three concentrations of 2XL with five concentrations of glyphosate and hypothesized that low concentrations of glyphosate combined with 2XL would be as effective in limiting the resprouting of *L. maackii* as higher concentrations of glyphosate without the enzymes. Our results indicated that 2XL did not improve glyphosate efficacy for reducing the number of resprouting stems or the length of the longest resprouting stem within the same or following year as treatment. Limited data indicated the combination of 2XL and glyphosate applied at 30 g L⁻¹ slightly increased resprouting in the year following treatment. While 2XL did not improve glyphosate efficacy, our results showed effective control of *L. maackii* at the lowest concentration of glyphosate tested (30 g L⁻¹), suggesting that concentrations lower than those typically applied may be effective in controlling *L. maackii* within parameters similar to those tested here.

Introduction

Invasive species are causing the widespread degradation of numerous ecosystems and are threatening the survival of many native plant species (Brown et al. 2002; Oswalt et al. 2015; Richardson et al. 2000; Sakai et al. 2001). The increased abundance and distribution of invasive species are closely tied to a decrease in global biodiversity and reduced ecosystem function (Butchart et al. 2010). The estimated costs of controlling invasive species and the ecological damage they cause may be as high as \$120 billion annually and will likely continue to rise (Pimentel et al. 2005).

Woody species, specifically shrubs originating from East Asia, often possess traits that make them particularly well suited to invade eastern North American forests (Iannone et al. 2015, 2016; Ricklefs et al. 2007). East Asian shrub species have an extended leaf phenology that results in a longer growing season than native plant species, allowing them to fix additional carbon and outcompete native species (Fridley 2012). Thus, East Asian shrubs are aggressive invaders of eastern North American forests, and controlling their establishment and spread across the region has become difficult and costly for land managers (Rathfon and Ruble 2007). Developing safer, more effective ways to control invasive shrubs is critical to the maintenance of biodiversity and ecosystem function (Webster et al. 2006).

One particularly problematic invasive shrub is Amur honeysuckle [*Lonicera maackii* (Rupr.) Herder]. Its vigorous root growth, woody character, and prolific resprouting make this species particularly difficult to control (McNeish and McEwan 2016). *Lonicera maackii* was introduced intentionally to the United States for the first time in 1897 (Luken and Thieret 1996). After several subsequent importations, it quickly spread across the eastern hardwood forests due to rapid maturation (Deering and Vankat 1999), high fecundity (Lieurance 2004), and widely dispersed

© The Author(s), 2022. Published by Cambridge University Press on behalf of the Weed Science Society of America. This is an Open Access article, distributed under the terms of the Creative Commons Attribution licence (<http://creativecommons.org/licenses/by/4.0/>), which permits unrestricted re-use, distribution and reproduction, provided the original article is properly cited.



Management Implications

Lonicera maackii (Amur honeysuckle) is an archetypal invasive shrub from East Asia. A better understanding of how to treat this species can provide insights into the control of other invasive shrub species that, as a group, are a nearly ubiquitous threat to forests of the eastern United States. The herbicide glyphosate (often in the cut stump method of application) is commonly used in the treatment of *L. maackii* and other invasive shrubs. However, in recent years, interest has grown in using lower concentrations of glyphosate and other herbicides in control efforts due to landowner concerns about non-target effects.

Our study examined whether the addition of a novel adjuvant increased efficacy of glyphosate treatment in the cut stump method of control (defined by a basal horizontal cut and the application of herbicide). This novel adjuvant—2XL—is a commercially available cocktail of cellulases (enzymes that break down a key component of woody-plant cell walls) derived from fungi. Conceptually, 2XL would break down the cell walls of the vascular tissues, allowing glyphosate to diffuse more easily into the plant. This would, hopefully, allow effective control to be achieved with lower concentrations of glyphosate.

While 2XL was not an effective adjuvant, we found that concentrations less than half (30 to 60 g L⁻¹) the widely recommended range (~98 to 122 g L⁻¹) of glyphosate were equally as effective at preventing posttreatment stump resprouting. This result suggests that lower concentrations of glyphosate may be effective in controlling *L. maackii*. Additional research is needed to determine whether lower concentrations of herbicide can be effective in controlling other invasive shrubs.

seeds (Gorchov et al. 2014). *Lonicera maackii* is known to inhibit native species by limiting access to light, due to its dense canopy and extended leaf phenology (McNeish and McEwan 2016). The leaves of *L. maackii* emerge earlier in the spring and are retained longer into the fall than leaves of most native plants, which negatively affects the establishment and growth of herbaceous and woody competitors (Schulte et al. 2011). This species also has indirect effects on forest ecosystems through altered nutrient cycling (Schuster and Dukes 2017), as well as the production of potentially allelopathic chemicals (Bauer et al. 2012).

A variety of treatment techniques are used to control invasions of *L. maackii* (as well as many other woody shrubs); all are included in at least one of the following four categories: physical, biological, cultural, and chemical (Radosevich et al. 1997). Physical removal includes manual techniques such as root wrenching, lopping, or root severing (Oneto et al. 2010), as well as mechanical removal in the form of brush-cutting and mulching-head treatments (Frank et al. 2018). While these methods may disturb the substrate, they are generally considered to be more environmentally safe and can be relatively inexpensive to apply but may require more work hours than other treatments (Bailey et al. 2011), and some manual techniques require access to specialized equipment (Frank et al. 2018; Oneto et al. 2010). Fire is another widely used physical method for controlling some invasive woody plant species (Mandle et al. 2011). While efficient (Ward and Williams 2011; Ward et al. 2013), this method is varying effective across shrub species and may promote the establishment of some invasive plants (Guthrie et al. 2016; Mandle et al. 2011; Rebbeck 2012; Ward and Williams 2011; Ward et al. 2013). Biological control is the least

common form of woody species control but is gaining acceptance as an alternative treatment (Rosa García et al. 2012). For example, goat grazing has been examined as a means of biological control for invasive shrubs, and while concerns over specificity and access exist, this method shows potential for future use (Elias and Tischew 2016; Luginbuhl et al. 1999; Rathfon et al. 2021). Cultural techniques are also an important pillar of woody species control. Cultural techniques can include physical and biological removal techniques but are more associated with a place and a people. Examples of cultural control include farming techniques such as annual tilling (Radosevich et al. 1997) and cultural burns (Hannibal 2014). These techniques are immensely important; particularly in regard to indigenous peoples (Pierotti and Wildcat 2000).

Herbicide application, often in combination with physical methods, is one of the most commonly used treatments for control of invasive woody shrubs (Webster et al. 2006). Specific herbicide foliar treatments are quick, cost-effective, and efficient but can lead to non-target effects on some native species (Bailey et al. 2011; Howle et al. 2010; Ma et al. 2018). Individual plant treatments such as “hack and squirt,” girdling, basal bark applications, and stem injections are also commonly used for an array of species (Hartman and McCarthy 2004; Loh and Daehler 2008; Oneto et al. 2010; Rathfon and Ruble 2007). The cut stump method typically involves the use of clearing saws to cut a woody stem horizontally at its base, followed by an application of a systemic herbicide to the cambium of the exposed surface (Luken and Mattimiro 1991). This technique combines the specificity of manual removal with the efficiency of chemical treatment. The cut stump method is generally considered preferable for invasive shrub control because of its efficiency both economically and in treatment (Bailey et al. 2011). However, as with any management approach, because of the posttreatment resprouting and the ability of invasive shrub stumps and seeds to remaining viable in the soil for many years, follow-up treatments are typically required, which can be both costly and time-consuming (Bailey et al. 2011). Glyphosate is a widely used herbicide with the cut stump method, and its use is considered to be relatively low risk compared with many other herbicides (Baylis 2000; Tarazona et al. 2017). Yet there is still concern regarding glyphosate’s non-target effects (Busse et al. 2001; Gill et al. 2018), misapplication (Tsui and Chu 2003), and even possible carcinogenic effects, as suggested from hazard assessments conducted by the International Agency for Research on Cancer (2015). This combination of issues has resulted in landowner concerns regarding the use of glyphosate and other herbicides on their properties (Howle et al. 2010; Ma et al. 2018).

Finding ways to improve invasive plant control techniques and getting the public, specifically landowners, to understand the importance of controlling invasive species are critical to protecting native species. One approach to reduce concerns and increase treatment efficacy is to develop ways to effectively treat invasive species with lower concentrations of herbicides. The use of chemical adjuvants (a substance added with the intention of increasing the efficacy of the active ingredient) may provide an approach that maintains efficacy at a lower herbicide concentration. One potential adjuvant, 2XL, is a commercially available cocktail of cellulases that was originally derived from the fungus *Aspergillus niger*. While similar enzymes have been suggested for use in the degradation of woody plants for bioethanol production (Scharf and Boucias 2010), cellulases may have a wide range of applications. Because these enzymes digest cellulose, which is a key structural component

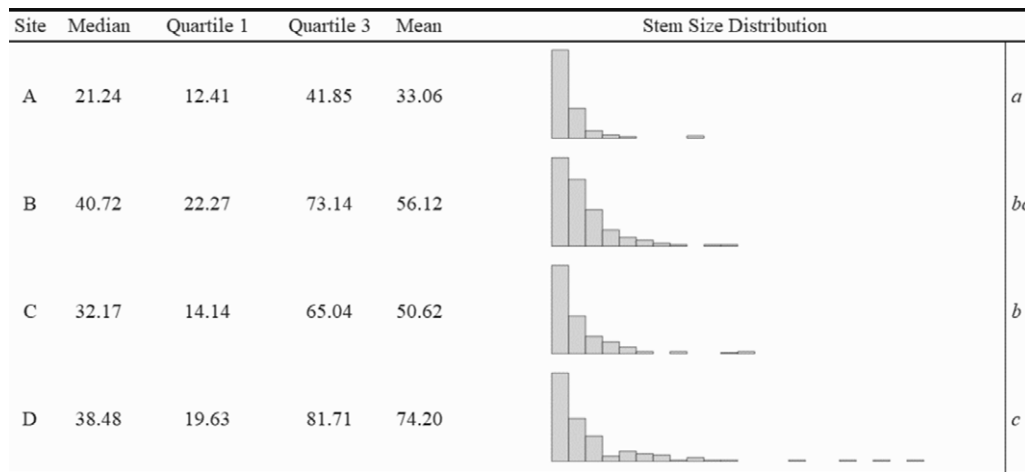


Figure 1. Median and quartiles of total site basal area (calculated for 150 individuals at each site) and distribution of individual *Lonicera maackii* basal area across study sites at the Richard G. Lugar Forestry Farm in northwest Indiana. Total basal diameter for each shrub was calculated by summing the basal area of each individual's stem or stems, which were calculated from their basal diameters. All units are in square centimeters. Histogram X axis ranged from 3.1 cm² to 656.0 cm²; bars represent 30-cm intervals. The means of logged basal areas that differed significantly between sites in a Tukey HSD test ($P < 0.05$) are indicated by italicized letters on the far right.

of the plant cell wall, we hypothesized that 2XL would increase herbicide efficacy in cut stump treatments of invasive shrubs through the possible degradation of plant cell walls. While little is known about glyphosate's entry into the plant through the vascular tissue of a cut stump, examining the herbicide in combination with 2XL may help direct further research into elucidating this pathway.

To test whether the addition of 2XL on treated woody stumps would increase the efficacy of glyphosate, we conducted a field experiment using the cut stump method of treatment on a particularly problematic invasive shrub, *L. maackii*. In our experiment, we tested combinations of three concentrations of 2XL with five concentrations of glyphosate and predicted that lower concentrations of glyphosate combined with 2XL would be as effective in limiting the resprouting of *L. maackii* as higher concentrations of glyphosate without the enzyme product.

Materials and Methods

Study Sites

We established four replicate sites within mature, secondary, mixed-hardwood forests at the Richard G. Lugar Forestry Farm (henceforth referred to as "Lugar Farm") in northwest Indiana (40.423827°N, 86.961725°W). Overstories were dominated by oak species (*Quercus* spp.), honey locust (*Gleditsia triacanthos* L.), sugar maple (*Acer saccharum* Marshall), and black cherry (*Prunus serotina* Ehrh.). Forests at Lugar Farm are heavily invaded with dense thickets of *L. maackii* (Shields et al. 2015), and the sites have received little or no treatment for any invasive plant species. Topographically, the sites were generally flat, with slopes of less than 5%. While the abundance of *L. maackii* stems was similar across sites, an ANOVA ($F(3, 628) = 10.20, P < 0.001$) and Tukey HSD test revealed that there were significant differences ($P < 0.05$) in the total basal area between replicates (Figure 1). The total basal area of individual shrubs was calculated as the summed basal area of all stems comprising the individual.

Treatment

At each site, we haphazardly selected 150 *L. maackii* individuals. Criteria for selection included a basal diameter > 2 cm and a

minimum distance of 2 m from the forest edge to ensure adequate surface area for herbicide application and to avoid any potential edge effects, respectively. We measured the basal stem diameters of all selected individuals and used these measurements to calculate total basal area. Individuals were then randomly assigned to one of 15 treatment combinations. These combinations consisted of a water-only control and various concentrations of herbicide and adjuvant, including five concentrations of glyphosate: 0 (0% v/v), 30 (6.1%), 60 (12.3%), 120 (24.6%), and 240 g L⁻¹ (49.2%). Each concentration was paired with three concentrations of 2XL (Sigma-Aldrich, St Louis, MO, USA): 0, 25, and 50% (v/v). We used generic glyphosate (Alligare Glyphosate 5.4, Opelika, AL, USA) with no surfactants or other additives.

Each treatment was premixed in spray bottles and applied on July 30, 2019, which was 8 d after and 13 d before a rain event. Temperatures ranged between 11 and 32 C during this period. All stems on each individual were cut horizontally approximately 10 cm above ground level with a chainsaw. Application of the assigned mixture occurred immediately after the cut was made. The vascular zone was completely treated to ensure full coverage of the herbicide mixture and to achieve maximal entry into the vasculature, and thus transport to the root system. The application volume of the treatment per stump was approximately 3.5 to 4.5 ml of solution per ~6.5 cm of basal diameter per stem, based on a general estimate. This methodology closely matches the application technique commonly used by land managers (Frank et al. 2018).

Resprouting stems were measured once in early November of the same year as the initial treatment (2019; ~95 d after treatment) and again in July of the following year (2020; ~357 d after treatment). The number of resprouts and length of the longest resprout, measured from tip to the base of the resprout on the cut stump, were recorded. Additionally, we recorded the occurrence of deer browse. Browse rates were low both years (same year: 9%; following year: 5%) and similar between sites.

Statistical Analyses

Due to the abundance of zero values (no resprouting), a negative binomial regression model predicting the number of resprouts was

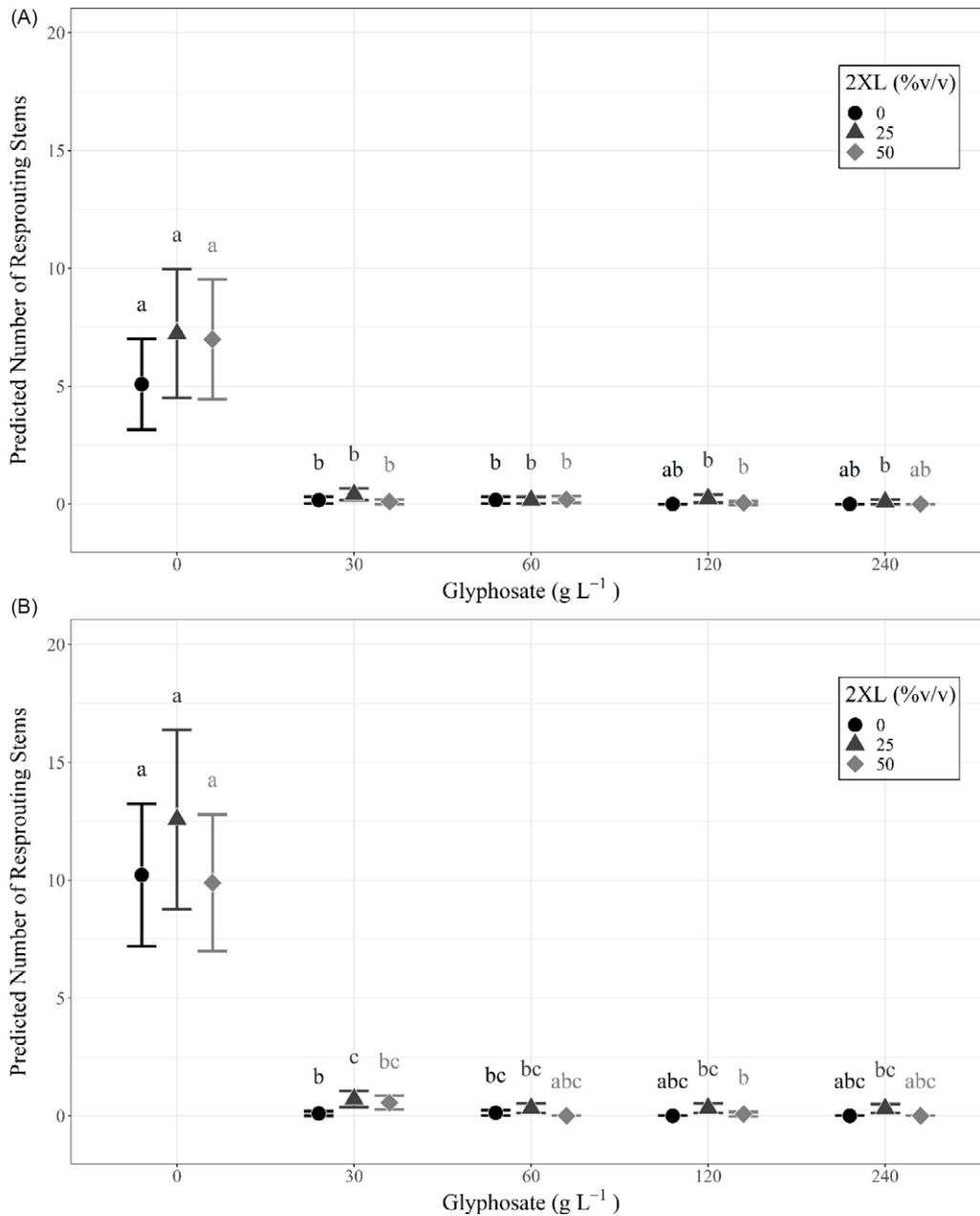


Figure 2. Predicted number of resprouting *Lonicera maackii* stems and 95% confidence intervals, based on the full negative binomial regression model for (A) the same year (~95 d after treatment) as treatment and (B) the following year (~357 d after treatment). The superscript letters of significance indicate significant differences ($\alpha = 0.05$) in pairwise comparisons between all combinations of glyphosate and 2XL for each year. Confidence intervals could not be created for combinations of glyphosate and 2XL for which the model predicts zero resprouting stems, because there is no variance in the data.

constructed for each year (LME4 package in R; Bates et al. 2015), which included fixed effects of total basal area of each individual, glyphosate dosage, 2XL dosage, and the interaction between glyphosate and 2XL dosages, as well as site as a random effect. For all models, $\alpha = 0.05$. We checked for an overdispersion assumption using a log-likelihood comparison between the full negative binomial model and a Poisson model, with the same variables (same year: $df = 18$, $P < 0.001$; following year: $df = 18$, $P < 0.001$), and a chi-square test on the overdispersion ratio (same year: $\hat{c} = 3.44$, $P < 0.001$; following year: $\hat{c} = 3.46$, $P < 0.001$). Results confirmed that the data were overdispersed and that the negative binomial distribution was appropriate.

The overall significance of the full negative binomial model was checked through a log-likelihood test, comparing it with a null model. The significance of interaction effects was also tested through a log-likelihood test by comparing the full model to a negative binomial regression that included the same variables except the interaction effect between glyphosate and 2XL dosages. The full model was significantly better than the reduced model, indicating that the interaction between glyphosate and 2XL was important in predicting resprouting. The previous two checks were confirmed through comparisons of the Akaike information criterion (AIC) for each model. Using the full negative binomial regression model, we performed pairwise comparisons between all combinations of

glyphosate and 2XL for each year (EMMEANS and MULTCOMP packages in R; Hothorn et al. 2008; Lenth 2022). Response estimates of the number of resprouting stems and 95% confidence intervals were generated and displayed for these comparisons. Confidence intervals cannot be created for combinations of glyphosate and 2XL for which the model predicts zero resprouting stems, because there is no variance in the data. Thus, these estimates did not appear statistically different from other estimates, despite a clear biological and visually apparent difference. For resprouting stems, we ran a type III ANOVA ($\alpha = 0.05$) comparing the heights of the tallest stem across glyphosate concentrations, 2XL volumes, and the interaction effect between glyphosate and 2XL dosages, with total basal area of *L. maackii* as a fixed effect.

A similar process was used to examine the relationship between basal diameter and glyphosate treatment and their effect on stump mortality as represented by the occurrence of any resprouting in the year following treatment. We fit a logistic regression with total basal area, glyphosate treatment, and an interaction between the two as fixed effects and site as a random effect. The model was then compared with a null model for overall significance, and we used a type II Walk chi-square test (*Anova* from the CAR package in R; Fox and Weisberg 2019) to examine the significance of each fixed effect ($\alpha = 0.05$).

Results and Discussion

The number of resprouts on individual *L. maackii* stumps varied with treatment type, with those receiving glyphosate treatment exhibiting few resprouts, regardless of concentration. No effect on resprouting was observed with the addition of 2XL, irrespective of the concentration of either chemical. This trend was consistent for measurements in the same year as treatment (~95 d after treatment) and in the following year (~357 d after treatment) and can be seen in the predicted values from each year's full negative binomial model (Figure 2; Table 1).

Both the same-year negative binomial model ($df = 18$, $P < 0.001$) and the model for the following year ($df = 18$, $P < 0.001$) were significant predictors of the number of resprouts when compared with null models. We also found that the interaction effect between glyphosate and 2XL significantly contributed to the model's predictive ability in both the same year ($df = 18$, $P < 0.001$) and the following year ($df = 18$, $P < 0.001$). The AIC was lowest for the full negative binomial models (same year: 1,051.1; following year: 1,247.8) compared with the null models (same year: 1376.8; following year: 5095.8), reduced models (same year: 1,057.9; following year: 1,285.2), and Poisson models (same year: 1,175.2; following year: 1,416.5). This confirmed that the full negative binomial models were the most appropriate models for both years. The coefficient estimates from the negative binomial mixed-effects model revealed that 2XL only had nonsignificant or positive effects on the predicted number of resprouts in both years. Specifically, we observed a small but significant increase in the number of resprouts in the year following treatment when 30 g L⁻¹ of glyphosate was mixed with a 25% volume of 2XL compared with no 2XL (Figure 2B).

A type III ANOVA revealed no significant differences among any 2XL–glyphosate combinations in both the same-year resprout lengths (Figure 3A; Table 2) or in those for the following year (Figure 3B; Table 2), although the low number of resprouting stems in combinations containing glyphosate may have hidden any potential relationship. This provides additional evidence that 2XL did not meaningfully impact the control of *L. maackii*.

Table 1. Summary of the negative binomial models explaining the number of resprouting *Lonicera maackii* stems in both the same year (~95 d after treatment) and the one following treatment (~357 d after treatment).^a

Variable	Same year	Following year
(Intercept)	1.562 (0.000)	2.254 (0.000)
Total basal area	0.001 (0.240)	0.001 (0.223)
Glyphosate-30	-3.395 (0.000)	-4.636 (0.000)
Glyphosate-60	-3.378 (0.000)	-4.350 (0.000)
Glyphosate-120	-22.605 (0.571)	-22.950 (0.590)
Glyphosate-240	-21.897 (0.730)	-23.043 (0.669)
2XL-25	0.353 (0.117)	0.207 (0.326)
2XL-50	0.318 (0.143)	-0.033 (0.872)
Glyphosate-30:2XL-25	0.523 (0.338)	1.763 (0.004)
Glyphosate-60:2XL-25	-0.433 (0.495)	0.690 (0.256)
Glyphosate-120:2XL-25	19.197 (0.631)	19.303 (0.651)
Glyphosate-240:2XL-25	17.537 (0.782)	19.328 (0.720)
Glyphosate-30:2XL-50	-0.838 (0.225)	1.766 (0.004)
Glyphosate-60:2XL-50	-0.229 (0.701)	-18.638 (0.810)
Glyphosate-120:2XL-50	17.672 (0.658)	18.097 (0.671)
Glyphosate-240:2XL-50	3.190 (0.971)	0.100 (0.999)
No. observed	588	588
AIC	1051.1	1247.8
BIC	1129.9	1326.6

^aRegression coefficients and P-values (in parentheses) are included for each variable. AIC, Akaike information criterion; BIC, Bayesian information criteria.

Stump mortality was significantly predicted by our logistical regression when compared with a null model ($df = 11$, $P < 0.001$). However, the examination of the individual fixed effects revealed that glyphosate treatment level alone ($\chi^2 = 70.498$, $df = 4$, $P < 0.001$) was statistically significant. Total basal area ($\chi^2 = 0.054$, $df = 1$, $P = 0.816$) and the interaction effect between total basal area and glyphosate treatment level ($\chi^2 = 3.992$, $df = 4$, $P = 0.407$) did not significantly improve the model's prediction of stump mortality. Our measure of stump mortality was simply whether the stump possessed any resprouting stems in the year following treatment, but it is possible that some stumps would be able to resprout in later years. However, we found that only 3% of all treated stumps resprouted in the year following treatment when they did not display any resprouting in the same year of treatment. Of all the stumps that displayed resprouting in the following year (a total of 136), only 19 (14%) had not exhibited resprouting within the same year as treatment. Thus, we are relatively confident that stumps that have yet to resprout will not resprout in future years, though further research could be done into the year-to-year resprouting rates of *L. maackii* after treatment.

The primary goal of our study was to determine whether lower concentrations of glyphosate can effectively control an aggressive, nonnative shrub through the use of 2XL as an adjuvant. Interest in reducing the concentration of glyphosate used to control invasive plants addresses environmental (Busse et al. 2001; Gill et al. 2018; Tsui and Chu 2003;) and human health (Bai and Ogbourne 2016; International Agency for Research on Cancer 2015) concerns, as well as reservations expressed by private landowners (Howle et al. 2010; Ma et al. 2018). We found that all tested concentrations of glyphosate were highly effective at preventing the resprouting of *L. maackii* from cut stumps and that lower concentrations of glyphosate were as inhibitory as higher concentrations.

Similar studies using the cut stump method of control utilized higher concentrations of glyphosate on *L. maackii*. Hartman and McCarthy (2004) used a 50% glyphosate solution, which is roughly

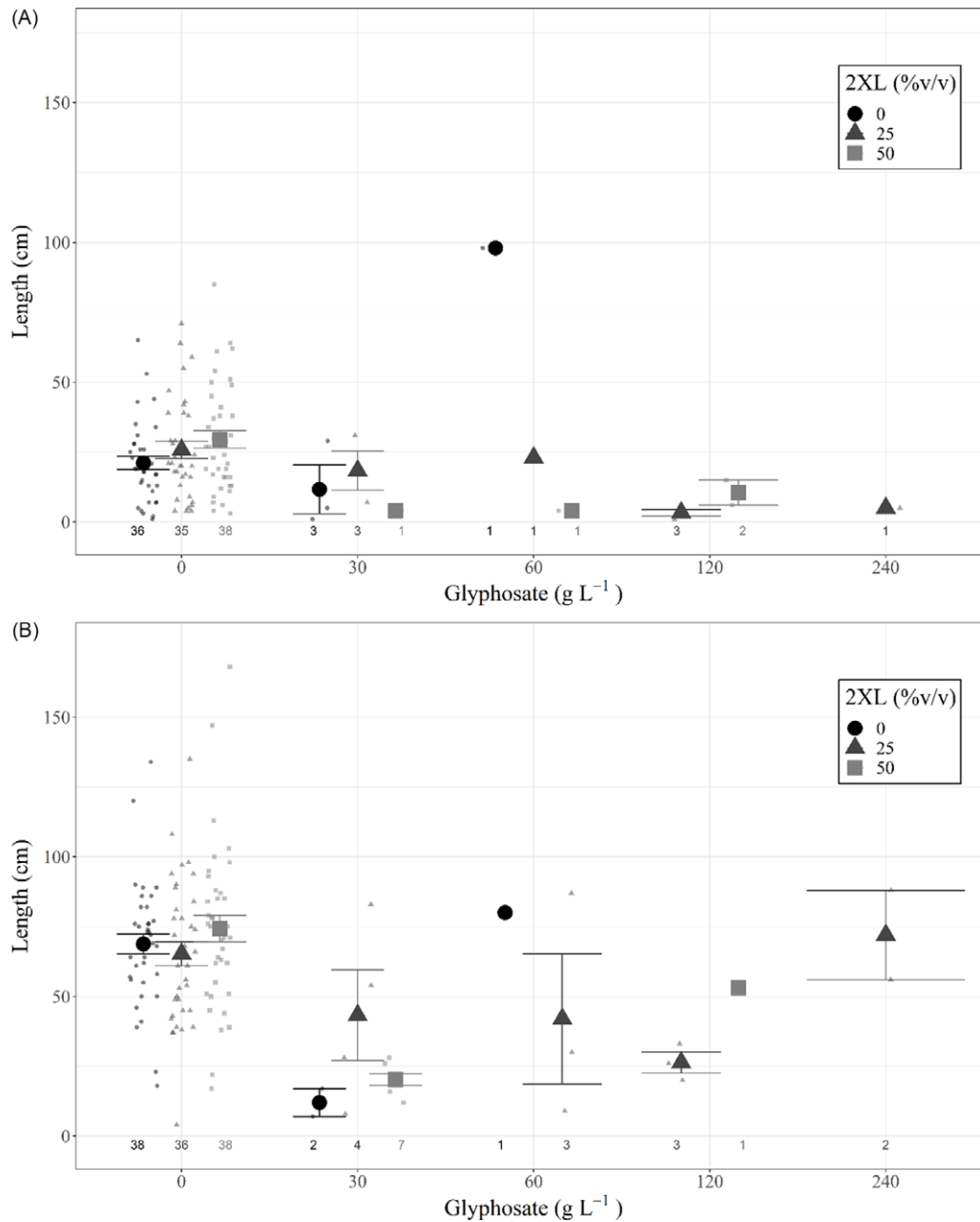


Figure 3. Length (mean and 95% confidence interval) of tallest resprouting *Lonicera maackii* stem (cm) of individuals that resprouted for (A) the same year as treatment (~95 d after treatment) and (B) the year following treatment (~357 d after treatment) across treatment types. Large symbols represent means, individual data points are displayed as smaller symbols of the same shape. The number of resprouting stems in each treatment group is displayed below each group; those groups with no resprouting stems are not displayed.

equivalent to 244 g L⁻¹ of glyphosate. While they saw similarly high levels of control (94% mortality), our study achieved equivalent levels of control with 30 and 60 g L⁻¹. Other studies have shown 90% to 100% efficacy in preventing resprouting within the year of treatment using ~88 g L⁻¹ glyphosate (18%) in the cut stump method for controlling *L. maackii*, which is similar to what we achieved with our lower concentrations (Owen et al. 2005; Schulz et al. 2012). Use of the cut stump method with a 20% to 25% concentration of glyphosate (98 to 122 g L⁻¹) is widely recommended to private landowners as a control technique (Miller et al. 2013; Smith and Smith 2010). However, our results suggest that a lower concentration could achieve the desired level of control across our tested range of basal areas.

Similar studies on other invasive shrubs provide some support for lower glyphosate concentrations. For example, lower concentrations of glyphosate have been used to effectively control a closely related invasive species, Morrow honeysuckle (*Lonicera morrowii* A. Gray; Mervosh and Gumbart 2015). In that study, ~41 g L⁻¹ was as effective as ~205 g L⁻¹ in completely preventing resprouting in the cut stump method of treatment. However, another study had less success in controlling *L. morrowii* with a moderate concentration of glyphosate (~98 g L⁻¹), particularly when treatments were applied in the autumn (Love and Anderson 2009). A concentration of 120 g L⁻¹ has been successfully used to control another problematic invasive shrub: Chinese privet (*Ligustrum sinense* Lour.; Enloe et al. 2018).

Table 2. Type III ANOVA results from comparisons of the tallest resprouting *Lonicera maackii* stem in the same year as treatment (~95 d after treatment) and the following year (~357 d after treatment).

Same year	Sum of squares	df	F-values	P (>F)
Total basal area	39.683	1	0.167	0.683
Glyphosate	1,161.292	2	2.448	0.091 ^a
2XL	645.311	2	1.36	0.261
Glyphosate:2XL	1,080.406	5	0.911	0.477
Residuals	26,567.819	112		
Following year				
Total basal area	7.465	1	0.019	0.890
Glyphosate	705.316	2	0.906	0.407
2XL	189.778	2	0.244	0.784
Glyphosate:2XL	2,601.737	4	1.67	0.161
Residuals	48,282.271	124		

^aGlyphosate level had a marginally significant impact on the length of the longest resprouting stem in the same year.

For the control of invasive shrub species, glyphosate concentrations of 20% to 25% (98 to 122 g L⁻¹) applied in the late summer or early autumn are typically recommended to land managers and private landowners (Miller et al. 2013; Smith and Smith 2010). However, the results of our study, and those of similar studies that examined control techniques for invasive shrub species, suggest that reevaluating these recommendations may be warranted, given that effective control (as evidenced by the inhibition of resprouting stems) can be achieved with lower concentrations of glyphosate. Because our study was conducted on one species during a single season under relatively dry and temperate conditions, our findings should be replicated across seasons of the year and invasive shrub species and under varying environmental conditions. Nonetheless, based on our results, concentrations of glyphosate as low as 30 to 60 g L⁻¹ can be effective at preventing the resprouting of *L. maackii*, which could reduce the expense of treatments while also potentially alleviating the concerns of landowners about non-target effects of the herbicide.

Our study was the first to evaluate the effectiveness of cellulase as an herbicide adjuvant. Contrary to our predictions, we found no evidence that 2XL provides any meaningful benefit when used in conjunction with glyphosate. Our review of the literature found no published reports describing the mechanism by which glyphosate enters the vascular tissue(s) when applied to the stumps of woody plants. However, it has been suggested that phosphate transporters play a role in the uptake of glyphosate when applied as a foliar spray to herbaceous plants (Gu et al. 2016; Misson et al. 2005). Concerning the foliar application of glyphosate on woody plants, Pereira et al. (2019) described how phosphate transporters embedded in the cell membranes of rose gum (*Eucalyptus grandis* W. Hill ex Maid.) may facilitate glyphosate absorption into the tree's vascular tissue from a foliar application. Additionally, recent research suggests that an ATP-binding cassette transporter is the primary means by which glyphosate enters the cytoplasm of a cell (Pan et al. 2021). Understanding glyphosate's pathway and uptake efficiency into woody vascular tissue on a physiological level may be a critical next step in finding more effective adjuvants.

Acknowledgments. We acknowledge the National Science Foundation for funding (STTR grant no. 1738503) and a partnership with EntoBio LLC. Thanks to Katherine Wynne for help with the models. Purdue University's Department of Forestry and Natural Resources provided research resources and access to the study area. Specific thanks to Brian Beheler for guidance and support and Garrett Pell, Ed Oehlman, and Grace Warble for their assistance with fieldwork. The authors declare that they have no conflicts of interest.

References

- Bai SH, Ogbourne SM (2016) Glyphosate: environmental contamination, toxicity and potential risks to human health via food contamination. *Environ Sci Pollut Res* 23:18988–19001
- Bailey BG, Saunders MR, Lowe ZE (2011) A cost comparison of five midstory removal methods. Pages 535–543 in *Proceedings of the 17th Central Hardwood Forest Conference*. Gen. Tech. Rep. NRS-P-78. Newtown Square, PA: U.S. Department of Agriculture, Forest Service, Northern Research Station
- Bates D, Mächler M, Bolker B, Walker S (2015) Fitting linear mixed-effects models using lme4. *J Stat Softw* 67:1–48
- Bauer JT, Shannon SM, Stoops RE, Reynolds HL (2012) Context dependency of the allelopathic effects of *Lonicera maackii* on seed germination. *Plant Ecol* 213:1907–1916
- Baylis AD (2000) Why glyphosate is a global herbicide: strengths, weaknesses and prospects. *Pest Manag Sci* 56:299–308
- Brown BJ, Mitchell RJ, Graham SA (2002) Competition for pollination between an invasive species (purple loosestrife) and a native congener. *Ecology* 83:2328
- Busse MD, Ratcliff AW, Shestak CJ, Powers RF (2001) Glyphosate toxicity and the effects of long-term vegetation control on soil microbial communities. *Soil Biol Biochem* 33:1777–1789
- Butchart SH, Walpole M, Collen B, van Strien A, Scharlemann JP, Almond RE, Baillie JE, Bomhard B, Brown C, Bruno J, Carpenter KE, Carr GM, Chanson J, Chenery AM, Csirke J, et al. (2010) Global biodiversity: indicators of recent declines. *Science* 328:1164–1168
- Deering RH, Vankat JL (1999) Forest colonization and developmental growth of the invasive shrub *Lonicera maackii*. *Am Midland Nat* 141:43–50
- Elias D, Tischew S (2016) Goat pasturing—a biological solution to counteract shrub encroachment on abandoned dry grasslands in Central Europe? *Agric Ecosyst Environ* 234:98–106
- Enloe SF, O'Sullivan SE, Loewenstein NJ, Brantley E, Lauer DK (2018) The influence of treatment timing and shrub size on Chinese privet (*Ligustrum sinense*) control with cut stump herbicide treatments in the southeastern United States. *Invasive Plant Sci Manag* 11:49–55
- Frank GS, Saunders MR, Jenkins MA (2018) Short-term vegetation responses to invasive shrub control techniques for Amur honeysuckle (*Lonicera maackii* [Rupr.] Herder). *Forests* 9:607
- Fox J, Weisberg S (2019) *An R Companion to Applied Regression*, 3rd edn. Thousand Oaks, CA: Sage. 608 p
- Fridley JD (2012) Extended leaf phenology and the autumn niche in deciduous forest invasions. *Nature* 485:359–362
- Gill JPK, Sethi N, Mohan A, Datta S, Girdhar M (2018) Glyphosate toxicity for animals. *Environ Chem Lett* 16:401–426
- Gorchov DL, Henry MC, Frank PA (2014) Invasion of an exotic shrub into forested stands in an agricultural matrix. *Invasive Plant Sci Manag* 7:336–344
- Gu M, Chen A, Sun S, Xu G (2016) Complex regulation of plant phosphate transporters and the gap between molecular mechanisms and practical application: what is missing? *Mol Plant* 9:396–416
- Guthrie SG, Crandall RM, Knight TM (2016) Fire indirectly benefits fitness in two invasive species. *Biol Invasions* 18:1265–1273
- Hannibal ME (2014) Lighting cultural fires. *Boom* 4:51–59
- Hartman KM, McCarthy BC (2004) Restoration of a forest understory after the removal of an invasive shrub, Amur honeysuckle (*Lonicera maackii*). *Restor Ecol* 12:154–165
- Hothorn T, Bretz F, Westfall P (2008) Simultaneous inference in general parametric models. *Biometrical J* 50:346–363
- Howle MB, Straka TJ, Nespeca MC (2010) Family forest owners' perceptions on chemical methods for invasive species control. *Invasive Plant Sci Manag* 3:253–261
- Iannone BV, Oswalt CM, Liebhold AM, Guo Q, Potter KM, Nunez-Mir GC, Oswalt SN, Pijanowski BC, Fei S (2015) Region-specific patterns and drivers of macroscale forest plant invasions. *Divers Distrib* 21:1181–1192
- Iannone BV, Potter KM, Guo Q, Liebhold AM, Oswalt CM, Pijanowski BC, Fei S (2016) Biological invasion hotspots: a trait-based perspective reveals new sub-continental patterns. *Ecography* 39:961–969

- International Agency for Research on Cancer (2015) Evaluation of Five Organophosphate Insecticides and Herbicides. Lyon, France: World Health Organization. 2 p
- Lieurance DM (2004) Leaf Phenology, Fecundity, and Biomass Allocation of the Invasive Shrub *Lonicera maackii* (Rupr.) Maxim in Contrasting Light Environments. MS thesis. Athens: Ohio University. 52 p
- Loh RK, Daehler CC (2008) Influence of woody invader control methods and seed availability on native and invasive species establishment in a Hawaiian forest. *Biol Invasions* 10:805–819
- Love JP, Anderson JT (2009) Seasonal effects of four control methods on the invasive Morrow's honeysuckle (*Lonicera morrowii*) and initial responses of understory plants in a southwestern Pennsylvania old field. *Restor Ecol* 17:549–559
- Luginbuhl J-M, Harvey TE, Green JT, Poore MH, Mueller JP (1999) Use of goats as biological agents for the renovation of pastures in the Appalachian region of the United States. *Agrofor Syst* 44:241–252
- Luken JO, Mattimiro DT (1991) Habitat-specific resilience of the invasive shrub Amur honeysuckle (*Lonicera maackii*) during repeated clipping. *Ecol Appl* 1:104–109
- Luken JO, Thieret JW (1996) Amur honeysuckle, its fall from grace. *BioScience* 46:18–24
- Ma Z, Clarke M, Church SP (2018) Insights into individual and cooperative invasive plant management on family forestlands. *Land Use Policy* 75:682–693
- Mandle L, Bufford JL, Schmidt IB, Daehler CC (2011) Woody exotic plant invasions and fire: reciprocal impacts and consequences for native ecosystems. *Biol Invasions* 13:1815–1827
- McNeish RE, McEwan RW (2016) A review on the invasion ecology of Amur honeysuckle (*Lonicera maackii*, Caprifoliaceae) a case study of ecological impacts at multiple scales. *J Torrey Bot Soc* 143:367–385
- Mervosh TL, Gumbart D (2015) Cutting and herbicide treatments for control of oriental bittersweet, pale swallow-wort and Morrow's honeysuckle. *Nat Areas J* 35:256–265
- Miller JH, Manning ST, Enloe SF (2013) A Management Guide for Invasive Plants in Southern Forests. Asheville, NC: U.S. Department of Agriculture, Forest Service, Southern Research Station. https://www.srs.fs.usda.gov/pubs/gtr/gtr_srs131.pdf. Accessed: May 17, 2021
- Misson J, Raghothama KG, Jain A, Jouhet J, Block MA, Bligny R, Ortet P, Creff A, Somerville S, Rolland N, Doumas P, Nacry P, Herrerra-Estrella L, Nussaume L, Thibaud MC (2005) A genome-wide transcriptional analysis using *Arabidopsis thaliana* Affymetrix gene chips determined plant responses to phosphate deprivation. *Proc Natl Acad Sci USA* 102:11934–11939
- Oneto SR, Kyser GB, DiTomaso JM (2010) Efficacy of mechanical and herbicide control methods for scotch broom (*Cytisus scoparius*) and cost analysis of chemical control options. *Invasive Plant Sci Manag* 3:421–428
- Oswalt CM, Fei S, Guo Q, Iannone BV, Oswalt SN, Pijanowski BC, Potter KM (2015) A subcontinental view of forest plant invasions. *NeoBiota* 24:49–54
- Owen HR, McDonnell AL, Mounter AM, Todd BL (2005) Influence of Stem Cutting and Glyphosate Treatment of *Lonicera maackii*, an Exotic and Invasive Species, on Stem Regrowth and Native Species Richness. *Faculty Research & Creative Activity* 97. http://thekeep.eiu.edu/bio_fac/97. Accessed: March 26, 2021
- Pan L, Yu Q, Wang J, Han H, Mao L, Nyporko A, Maguza A, Fan L, Bai L, Powles S (2021) An ABC-type transporter endowing glyphosate resistance in plants. *Proc Natl Acad Sci USA* 118:e2100136118
- Pereira FCM, Tayengwa R, Alves PLDCA, Peer WA (2019) Phosphate status affects phosphate transporter expression and glyphosate uptake and transport in grand eucalyptus (*Eucalyptus grandis*). *Weed Sci* 67:29–40
- Pierotti R, Wildcat D (2000) Traditional ecological knowledge: the third alternative (commentary). *Ecol Appl* 10:8
- Pimentel D, Zuniga R, Morrison D (2005) Update on the environmental and economic costs associated with alien-invasive species in the United States. *Ecol Econ* 52:273–288
- Radosevich SR, Holt JS, Ghera C (1997) *Weed Ecology: Implications for Management*. 2nd ed. New York: Wiley. 589 p
- Rathfon R, Ruble K (2007) Herbicide treatments for controlling invasive bush honeysuckle in a mature hardwood forest in west-central Indiana. Pages 187–197 in *Proceedings of the 15th Central Hardwood Forest Conference*. Gen. Tech. Rep. SRS-101. Asheville, NC: U.S. Department of Agriculture, Forest Service, Southern Research Station
- Rathfon RA, Greenler SM, Jenkins MA (2021) Effects of prescribed grazing by goats on non-native invasive shrubs and native plant species in a mixed-hardwood forest. *Restor Ecol* 29:e13361
- Rebeck J (2012) Fire management and woody invasive plants in oak ecosystems. Pages 142–155 in *Proceedings of the 4th Fire in Eastern Oak Forests Conference*. Gen. Tech. Rep. NRS-P-102. Newtown Square, PA: U.S. Department of Agriculture, Forest Service, Northern Research Station
- Richardson DM, Allsopp N, D'Antonio CM, Milton SJ, Rejmánek M (2000) Plant invasions—the role of mutualisms. *Biol Rev* 75:65–93
- Ricklefs RE, Guo Q, Qian H (2007) Growth form and distribution of introduced plants in their native and non-native ranges in Eastern Asia and North America: growth form and distribution of introduced plants. *Divers Distrib* 14:381–386
- Rosa García R, Celaya R, García U, Osoro K (2012) Goat grazing, its interactions with other herbivores and biodiversity conservation issues. *Small Rumin Res* 107:49–64
- Lenth RV (2022) emmeans: Estimated Marginal Means, aka Least-Squares Means. R package version 1.7.2. <https://CRAN.R-project.org/package=emmeans>. Accessed: May 18, 2022
- Sakai AK, Allendorf FW, Holt JS, Lodge DM, Molofsky J, With KA, Baughman S, Cabin RJ, Cohen JE, Ellstrand NC, McCauley DE, O'Neil P, Parker IM, Thompson JN, Weller SG (2001) The population biology of invasive species. *Annu Rev Ecol Syst* 32:305–332
- Scharf ME, Boucias DG (2010) Potential of termite-based biomass pre-treatment strategies for use in bioethanol production. *Insect Sci* 17:166–174
- Schulte LA, Mottl EC, Palik BJ (2011) The association of two invasive shrubs, common buckthorn (*Rhamnus cathartica*) and Tartarian honeysuckle (*Lonicera tatarica*), with oak communities in the midwestern United States. *Can J For Res* 41:1981–1992
- Schulz KE, Wright J, Ashbaker S (2012) Comparison of invasive shrub honeysuckle eradication tactics for amateurs: stump treatment versus regrowth spraying of *Lonicera maackii*. *Restor Ecol* 20:788–793
- Schuster MJ, Dukes JS (2017) Rainfall variability counteracts N addition by promoting invasive *Lonicera maackii* and extending phenology in prairie. *Ecol Appl* 27:1555–1563
- Shields JM, Jenkins MA, Saunders MR, Gibson KD, Zollner PA, Dunning JB (2015) Influence of intensity and duration of invasion by Amur honeysuckle (*Lonicera maackii*) on mixed hardwood forests of Indiana. *Invasive Plant Sci Manag* 8:44–56
- Smith K, Smith A (2010) Controlling Non-native Invasive Plants in Ohio Forests: Bush Honeysuckle. Ohio State University Extension Forestry Fact Sheet F-68-10
- Tarazona JV, Court-Marques D, Tiramani M, Reich H, Pfeil R, Istace F, Crivellente F (2017) Glyphosate toxicity and carcinogenicity: a review of the scientific basis of the European Union assessment and its differences with IARC. *Arch Toxicol* 91:2723–2743
- Tsui MTK, Chu LM (2003) Aquatic toxicity of glyphosate-based formulations: comparison between different organisms and the effects of environmental factors. *Chemosphere* 52:1189–1197
- Ward J, Williams S (2011) Controlling an invasive shrub, Japanese barberry (*Berberis thunbergii* DC), using directed heating with propane torches. *Nat Area J* 31:156–162
- Ward JS, Williams SC, Worthley TE (2013) Comparing effectiveness and impacts of Japanese barberry (*Berberis thunbergii*) control treatments and herbivory on plant communities. *Invasive Plant Sci Manag* 6:459–469
- Webster CR, Jenkins MA, Jose S (2006) Woody invaders and the challenges they pose to forest ecosystems in the eastern United States. *J For* 104:366–374