



## **Spinal ectopic choroid plexus papilloma in a cat**

Authors: Tabanez, Joana, Beck, Samuel, Driver, Colin, and Rusbridge, Clare

Source: Journal of Feline Medicine and Surgery Open Reports, 7(2)

Published By: SAGE Publishing

URL: <https://doi.org/10.1177/20551169211048464>

---

BioOne Complete ([complete.BioOne.org](https://complete.BioOne.org)) is a full-text database of 200 subscribed and open-access titles in the biological, ecological, and environmental sciences published by nonprofit societies, associations, museums, institutions, and presses.

Your use of this PDF, the BioOne Complete website, and all posted and associated content indicates your acceptance of BioOne's Terms of Use, available at [www.bioone.org/terms-of-use](https://www.bioone.org/terms-of-use).

Usage of BioOne Complete content is strictly limited to personal, educational, and non - commercial use. Commercial inquiries or rights and permissions requests should be directed to the individual publisher as copyright holder.

---

BioOne sees sustainable scholarly publishing as an inherently collaborative enterprise connecting authors, nonprofit publishers, academic institutions, research libraries, and research funders in the common goal of maximizing access to critical research.



# Spinal ectopic choroid plexus papilloma in a cat

Joana Tabanez<sup>1</sup>, Samuel Beck<sup>2</sup>, Colin Driver<sup>1,3</sup>  
and Clare Rusbridge<sup>1,4</sup> 

*Journal of Feline Medicine and Surgery Open Reports*  
1–6

© The Author(s) 2021

Article reuse guidelines:

sagepub.com/journals-permissions

DOI: 10.1177/20551169211048464

journals.sagepub.com/home/jfmsopenreports

This paper was handled and processed  
by the European Editorial Office (ISFM)  
for publication in *JFMS Open Reports*



## Abstract

**Case summary** A 10-year-old male neutered Russian Blue cat was presented with a 2-month history of progressive non-ambulatory paraparesis. Spinal MRI revealed a well-demarcated, compressive intradural extramedullary mass at the level of T1 vertebra. The mass had subtle hyperintensity on T2-weighted images, was isointense on T1-weighted images and had diffuse, marked enhancement following gadolinium administration. Neuroaxis MRI, including limited brain sequences, excluded other visible lesions. Thoracic and abdominal radiographs were unremarkable. The mass was resected via a dorsal C7–T2 laminectomy and durotomy. Histopathology revealed a neoplasm composed of columnar-to-polygonal cells forming bilayered palisading patterns with a few apical cilia. Three mitoses were noted in 10 high-power fields. This was consistent with an epithelial neoplasm and initially a metastatic adenocarcinoma was considered most likely. Full-body CT with contrast and including the brain found rhinitis but did not identify any additional neoplastic foci. Biopsies of the nasal cavity and fine-needle aspiration of the spleen and liver were unremarkable. On immunohistochemical evaluation, pan-cytokeratin and E-cadherin immunolabelling was observed; however, synaptophysin, thyroglobulin, chromogranin A and glial fibrillary acidic protein was not detected. This, along with the histological morphology and absence of a primary tumour, was compatible with an ectopic choroid plexus neoplasm. Follow-up performed at 3, 14 and 24 months postoperatively revealed neurological improvement without recurrence.

**Relevance and novel information** We describe the presentation, histopathological and immunohistochemical features and outcome of a case of a rare ectopic choroid plexus neoplasm in the spinal cord of a cat.

**Keywords:** Extraventricular choroid plexus; atypical choroid plexus papilloma; surgical management; immunohistochemistry; cytokeratin; E-cadherin

**Accepted:** 6 September 2021

## Case description

A 10-year-old male neutered Russian Blue cat was presented with a 2-month history of right pelvic limb monoparesis that progressed to non-ambulatory paraparesis 2 days prior to presentation. Previous management included meloxicam (0.05 mg/kg q24h PO [Meloxid; MiPet]), gabapentin (50 mg q12h PO) and acupuncture, to which there was no response.

The general physical examination was unremarkable. On neurological examination, the cat was unable to walk with marked paraparesis. Postural reactions were absent on both pelvic limbs. Segmental spinal reflexes, mentation and cranial nerve examinations were considered normal, except for bilateral absent cutaneous trunci reflex. The neurological examination findings

and clinical history were most compatible with a C8–T1 spinal cord segment lesion.

<sup>1</sup>Neurology and Neurosurgery Department, Fitzpatrick Referrals Orthopaedics and Neurology, Easing, UK

<sup>2</sup>VPG Histology, Horner Court, Bristol, UK

<sup>3</sup>Lumbry Park Veterinary Specialists, Alton, UK

<sup>4</sup>School of Veterinary Medicine, Faculty of Health and Medical Sciences, University of Surrey, Guildford, UK

### Corresponding author:

Joana Tabanez, DVM, MRCVS, Fitzpatrick Referrals Orthopaedics and Neurology, Halfway Lane, Easing, Godalming, Surrey GU7 2QQ, UK

Email: JoanaT@fitzpatrickreferrals.co.uk



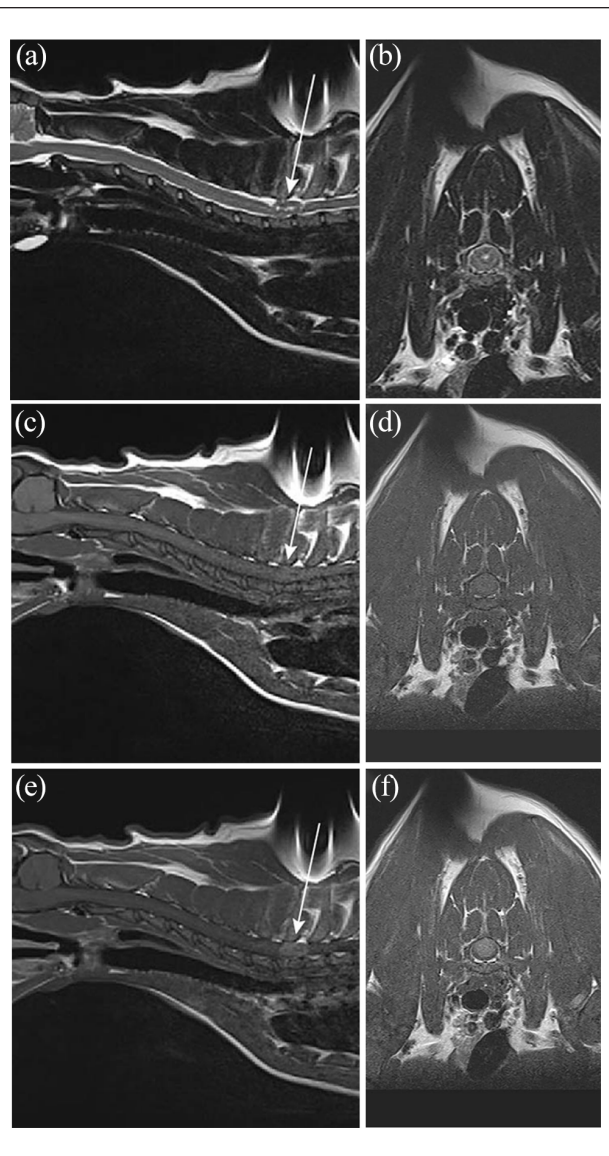
Creative Commons Non Commercial CC BY-NC: This article is distributed under the terms of the Creative Commons

Attribution-NonCommercial 4.0 License (<https://creativecommons.org/licenses/by-nc/4.0/>) which permits non-commercial use, reproduction and distribution of the work without further permission provided the original work is attributed as specified on the SAGE and Open Access pages (<https://us.sagepub.com/en-us/nam/open-access-at-sage>).

Haematology evaluation revealed moderate non-regenerative anaemia (packed cell volume [PCV] 23.9%, reference interval [RI] 30.3–52.3; red blood cells  $4.53 \times 10^{12}$ , RI 6.54–12.20). Serum biochemistry was unremarkable except for a marginal increase in glucose (9.22 mmol/l; RI 3.95–8.84) and globulins (52 g/l; RI 28–51). Feline leukaemia virus and feline immunodeficiency virus immunochromatography tests were negative. Survey thoracic and abdominal radiographs were unremarkable except for diffuse idiopathic skeletal hyperostosis at T11–L2, which was considered clinically irrelevant. The neurological findings indicated that MRI was appropriate. Sedation was performed using dexmedetomidine (2 µg/kg IV [Dexdomitor; Orion Pharma]) and buprenorphine (0.02 mg/kg IV [Buprenodale; Dechra]). General anaesthesia was induced with alfaxalone (5 mg/kg [Alfaxan; Jurox]) and maintained with isoflurane (Isoflo; Zoetis). MRI of the thoracolumbar spine was performed using a 1.5-T MRI unit (Siemens Symphony Tim system), which revealed a single, well-demarcated, suspected intradural extramedullary mass at the level of the T1 vertebra leading to marked dorsal compression of the spinal cord at that site. The mass lesion had a heterogeneous appearance, with a subtle patchy hyperintensity on T2-weighted sequences with a marked hyperintense core (Figure 1a,b) and was isointense on T1-weighted sequences with a hypointense core (Figure 1c,d). There was diffuse moderate paramagnetic contrast enhancement after gadolinium administration (0.1 mmol/kg [Dotarem; Guerbet Laboratories]) (Figure 1e,f). Images of the remaining neuraxis, including limited sequences of the brain, revealed no further lesions.

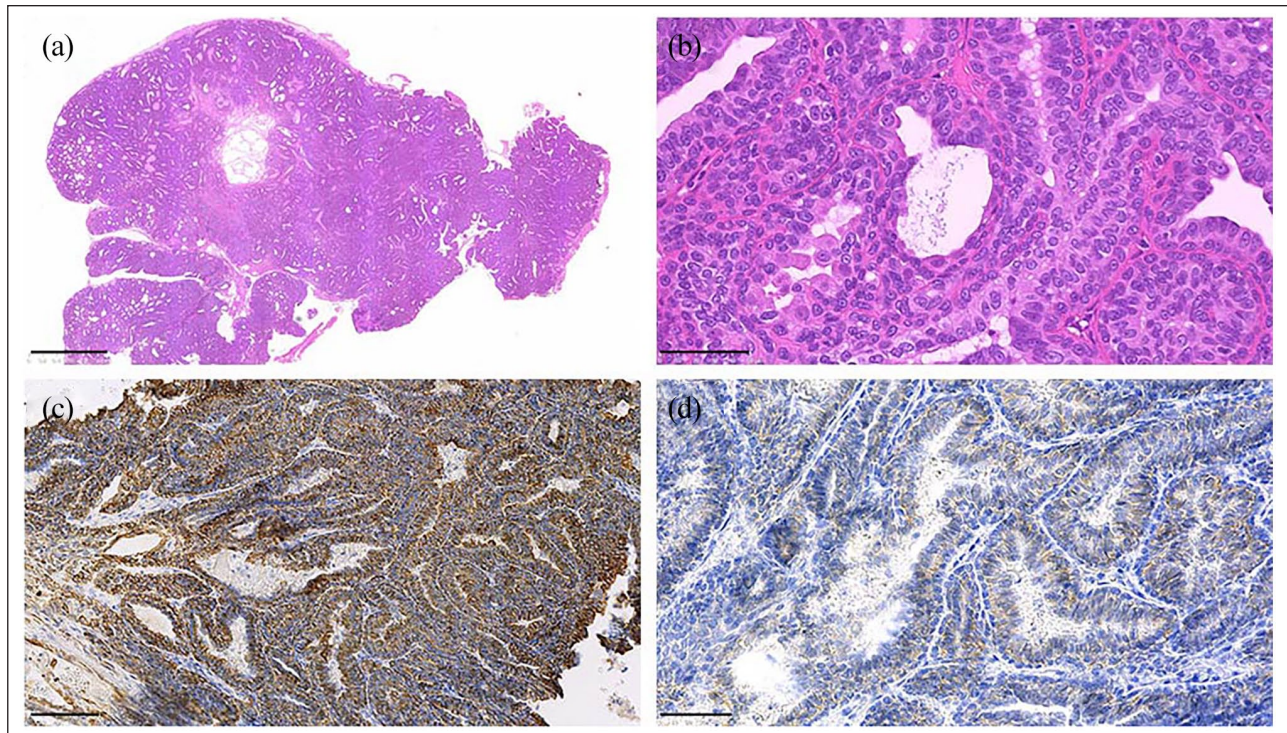
Differential diagnoses included meningioma, peripheral nerve sheath tumour, lymphoma and tumours of neuroectodermal origin. The owner elected for surgical biopsy and resection if possible. A dorsal approach to C7–T2 followed by a modified Funkquist type B dorsal laminectomy of the caudal portion of C7, entire T1 and part of T2, but preserving part of the T1 spinous process attached to the interspinous ligament and the T2 spinous process.<sup>1</sup> Stay sutures were applied in the dura with 6-0 Vicryl (polyglactin 910; Ethicon), following a linear durotomy to allow identification and removal of the mass. There was a clear dissection plane between neoplastic and normal tissue. Haemostasis was controlled using Surgicel SNoW (Original Absorbable Hemostat; Ethicon) and routine closure was performed. No post-operative neurological deterioration was observed, and after 3 days of hospitalisation the cat was ambulatory with subtle paraparesis and proprioceptive ataxia. On discharge, manual PCV was 28% (RI 25–45).

Histopathological analysis revealed a well-demarcated, densely cellular, unencapsulated neoplasm arranged in tubules or acini, bilayered palisading patterns and packets, supported and subdivided by a fine



**Figure 1** MRI of the cervical and thoracic spine of a cat. (a,b) Mid-sagittal T2-weighted imaging (T2WI) (a) and transverse T2WI at the level of T1 (b). There is an intradural extramedullary mass lesion at the level of T1, which is heterogeneous in appearance with a minimally hyperintense periphery and a marked hyperintense core. The mass is dorsal and midline in location leading to marked spinal cord compression at that site as indicated by the arrow. (c–f) Midsagittal and transverse T1WI (c,d) and corresponding images post-gadolinium administration (e,f) at the level of T1. Note that the mass lesion is isointense with a hypointense core (c,d) with diffuse and moderate contrast enhancement (e,f) of the mass, as indicated by an arrow

fibrovascular stroma (Figure 2a). Neoplastic cells were columnar-to-polygonal, with moderate eosinophilic cytoplasm that contained a single round-to-oval nucleus. Nuclei contained a single nucleolus and stippled chromatin. There was mild anisokaryosis and anisocytosis (Figure 2b). Three mitoses were noted in 10 high-power



**Figure 2** Photomicrographs. (a) The neoplasm exhibits a blantly infiltrative profile, arranged in bilayered palisading patterns, with slit-like tubules and packets, supported and subdivided by a fine fibrovascular stroma. Haematoxylin and eosin stain (H&E). (b) High-power image of the section described in (a). Neoplastic cells are columnar to polygonal, with moderate eosinophilic cytoplasm that contains a single round-to-oval apically located nucleus. H&E stain. (c) Strong, diffuse, cytoplasmic immunostaining pan-cytokeratin (AE1/AE3) in >90% of the neoplastic population. DAB chromogen. Harris haematoxylin counterstain. (d) Fine, mild-to-moderate membranous and apical labelling for E-cadherin. DAB chromogen. Harris haematoxylin counterstain. Scale bars: (a) 1 mm; (b,d) 50  $\mu$ m; (c) 100  $\mu$ m

fields. The neoplastic population surrounded accumulations of eosinophilic proteinaceous fluid. A low number of cells exhibited fine apical cilia. Considering these features, an epithelial neoplasm of uncertain origin was suspected, compatible with a metastatic adenocarcinoma. Owing to apical cilia observed in neoplastic cells, a primary pulmonary neoplasm was suspected.

Following histopathological results, a full-body CT, including brain (160-slice Aquilion Prime; Toshiba), with ioversol contrast (2ml/kg [Optiray 300; Guerbet Laboratories]) was performed in search for a possible primary tumour. Special attention was paid to epithelial sites such as skin, middle ear, lungs, intestine, kidneys, thyroid and anal glands. No mass lesion was identified, and the only additional pathologies recognised were a left nasal cavity destructive lesion; moderate hepatopathy with occasional hypoattenuating areas and marked splenic congestion. Biopsies of the nasal cavity were consistent with mixed neutrophilic-plasmocytic erosive rhinitis, with no evidence of fungal or neoplastic cells. Fine-needle aspiration of the spleen and liver were unremarkable.

Follow-up evaluation and neurological examination performed at 3 and 14 months revealed a subtle pelvic limb ataxia only.

The lack of clinical progression, failure to identify a primary tumour and prolonged survival time was considered highly unusual for a metastatic tumour. Hence, immunohistochemical evaluation of the excised mass was performed. The neoplastic population exhibited strong, fine-to-granular intracytoplasmic labelling for pan-cytokeratin in >90% of the sample (Figure 2c). No immunostaining was observed for synaptophysin, thyroglobulin, chromogranin A or glial fibrillary astrocytic protein (GFAP). Immunolabelling for E-cadherin was fine, mild-to-moderate, membranous and apical, consistent with an epithelial origin (Figure 2d). Given the absence of a primary neoplasm identification, positive immunolabelling for pan-cytokeratin and E-cadherin was considered supportive of a neoplasm arising from an ectopic choroid plexus.

At the 24-month telephone follow-up it was reported that the cat had returned to normal outdoor activity and had an excellent quality of life. The owner reported that they did not perceive the cat to have any neurological deficits.

## Discussion

To our knowledge, this is the first report of a spinal choroid plexus tumour (CPT) in a cat. The choroid plexus

**Table 1** Choroid plexus tumour grading system in dogs (according to Westworth et al<sup>7</sup>)

Histological grade	Mitotic figures per 10 HPFs	Other histological features
Grade I CPP	<2	Minimal cell changes and invasion
Grade II ACPP	2–10	May also include up to two of the following features: increased cellularity; nuclear atypia; loss of papillary pattern or multilayered papillae; and areas of necrosis
Grade III CPC	5–10	At least four of the following morphological criteria: >5 mitoses per 10 HPFs; nuclear atypia; multilayered epithelium; increased cell density; loss of papillary pattern with solid cell growth; and/or multifocal areas of necrosis

HPF = high-power field; CPP = choroid plexus papilloma; ACPP = atypical choroid plexus papilloma; CPC = choroid plexus carcinoma

begins to form shortly after the closure of the neural tube, developing from invaginations of cells of mesenchymal and neuroepithelium origin.<sup>2,3</sup> The choroid plexus epithelium originates from the roof plate at the sites of cerebral ventricle formation, developing sequentially as fourth, lateral then third ventricle.<sup>2–4</sup> A layer of modified ependymal cells and one layer of vascular endothelium is organised in villous processes.<sup>4–6</sup> The choroidal epithelial cells are cuboidal to columnar, with a central-to-basal nuclei and apical tight junctions. The cells have apical microvilli with projecting cilia and basal infoldings of the cell membrane, which have transcellular transport function.<sup>4,5</sup>

CPTs account for 10–12.8% of all primary brain tumours in dogs and are more often encountered on the fourth ventricle.<sup>7,8</sup> In cats, however, CPTs have been rarely reported, with only one choroid plexus cystadenoma and one choroid plexus oncocyoma identified, according to the published literature.<sup>9,10</sup>

Histologically, CPTs resemble an exuberant version of the normal counterpart with branching papillary folds of cuboidal-to-columnar epithelium with microvilli, basal bodies and apical tight junctions.<sup>5,8,11</sup> According to the World Health Organization (WHO) histological classification system for humans, CPTs are classified as grade I choroid plexus papilloma (CPP), grade II atypical choroid plexus papilloma and grade III choroid plexus carcinoma (CPC).<sup>12</sup> Identification of atypical CPP in dogs is controversial and has been reported according to the mitotic index, cell density and multilayering of papillae.<sup>13,14</sup> The mitotic rate per high-power field, nuclear atypia, multilayered epithelium, high cell density, solid areas of cell growth, blurring of the papillary pattern and multifocal areas of necrosis are the criteria for distinguishing tumour types (Table 1).<sup>7,12</sup> Tumour-associated glomeruloid microvascular proliferation, increased proliferative index and desmoplasia are significantly higher in CPC.<sup>15</sup>

The main immunohistochemical differentiative feature in normal and neoplastic choroid plexus epithelium

is a segmental reaction to both low- and high-molecular weight cytokeratins.<sup>6,8,10,16,17</sup> This specific epithelial feature separate CPTs from other neuroepithelial neoplasms.<sup>17</sup> CPTs can variably express GFAP, mostly negative or minimally positive.<sup>6,16–18</sup> The identification of GFAP immunostaining in CPTs might be explained by the close relationship between choroid plexus and ependymal cells. E-cadherin, cell adhesion molecules and  $\beta$ -catenin connecting protein are commonly expressed in canine CPT, regardless of grade.<sup>13,18</sup> Reginato et al<sup>13</sup> reported that N-cadherin immunolabelling is a more frequent feature of grade I tumours than high-grade tumours. Absence of N-cadherin expression has also been associated with the dissemination of CPCs within the neuroaxis.<sup>19</sup> Human CPTs can also express S100, vimentin, epithelial membrane antigen (EMA), transthyretin and rarely synaptophysin.<sup>8</sup> Nuclear immunoreactivity for Ki-67 is a suggestive predictor of malignant behaviour and therefore of CPC.<sup>13,15</sup> Kir7.1 has been reported as an excellent specific immunomarker for CPTs in dogs and useful in differentiating from metastatic carcinoma.<sup>14,20</sup>

In this report, the neoplasm presented cytokeratin immunolabelling but no GFAP immunomarking, indicative of a neoplasm of epithelial origin.<sup>16</sup> The absence of labelling for chromogranin A, synaptophysin and thyroglobulin led to the exclusion of a neuroendocrine origin, including thyroid neoplasm. Differential diagnoses were ependymoma, CPTs and metastatic carcinomas. Previously described brain ependymomas in cats were characterised by the presence of perivascular pseudo rosettes or, less commonly, true rosettes.<sup>21</sup> According to these reports,<sup>6,8,21</sup> ependymomas presented variable positive immunolabelling for GFAP and absent-to-rare labelling with pan-cytokeratin antibodies. Nevertheless, ependymomas that do not express GFAP have been reported in dogs and cats, as have feline ependymomas that express rare pan-cytokeratin.<sup>21,22</sup> According to Figarella-Branger et al,<sup>23</sup> ependymomas do not express E-cadherin. Analysing all these reports regarding GFAP

and cytokeratin immunostaining, an ependymal origin was considered less likely along with the absence of rosettes or pseudorosettes and the presence of a fibrovascular rather than glial core. E-cadherin expression throughout the neoplastic population was consistent with an epithelial origin, which – when considered alongside the strong cytokeratin reaction – was supportive of a neoplasm arising from choroid plexus.<sup>18</sup> Despite not having performed Ki-67 and/or Kir.7.1 immunolabelling, the tumour's benign characteristics were reinforced by the exclusion of a clinically metastatic carcinoma by advanced imaging. Further, the survival time recorded in this case was inconsistent with a metastatic epithelial neoplasm.

According to the WHO histological grading system, this neoplasm was likely to be an atypical choroid plexus papilloma human counterpart, given the mitotic index (>2–10 high-power fields) and the bilayer of stratified epithelium.<sup>12,14</sup> Subarachnoid seedings from primary intraventricular CPTs, also known as drop metastases, are not unusual in dogs.<sup>7,24–26</sup> To our knowledge, these have never been reported in cats. As MRI and brain CT showed no evidence of an intraventricular mass, this spinal tumour was considered to be of ectopic origin.

Ectopic CPTs in the spinal cord without intracranial mass lesions are exceptionally rare and scarcely reported in humans.<sup>27–29</sup> Extramedullary thoracolumbar and sacral CPC with lung metastasis, intradural sacral nerve roots CPP and extradural S1–S3 CPP were reported as primary tumours without intracranial lesions in humans.<sup>27–29</sup> An ectopic choroid plexus presacral cyst and two cases of intramedullary ectopic normal choroid plexus have also been described.<sup>30–32</sup> Contrary to what might be expected, ectopic sites seem to be more common in adults than in children.<sup>33</sup> This was interesting given the cat was 10 years old, but further conclusions could not be made as there are no reports of this tumour type in cats.

The aetiology of ectopic spinal choroid plexus neoplasia remains unknown. It has been suggested to originate from dorsal midline mesenchymal-derived epithelial tissue that would normally invaginate into the developing brain after neural tube closure but, in this instance, inadvertently invaginates into subarachnoid space of the spinal cord during embryogenesis.<sup>2,32</sup> The hypothesis of the choroid plexus epithelium arising by metaplasia from ependymal rests has been suggested as an alternative aetiology.<sup>28,29</sup>

Surgical treatment of spinal cord or sacral ectopic choroid plexus or ectopic CPT in humans is associated with neurological improvement and no reoccurrence within a follow-up period of 3 months to 3 years.<sup>28–32</sup> No further chemotherapy or radiotherapy treatment was provided in the above-reported cases. A poor prognosis was associated with ectopic choroid plexus carcinoma with metastasis.<sup>27</sup>

In dogs, intracranial ectopic choroid plexus cyst without ventricular communication have been described.<sup>34,35</sup> In a dog treated surgically, there were no signs of reoccurrence after 18 months.<sup>34</sup> Similarly to the reported outcomes in both humans and one dog, this cat had no immediate neurological deterioration and no evidence of relapse at 24 months postoperatively.

In this case report, histopathological and immunohistochemical findings, together with the absence of a primary intraventricular CPT or other primary epithelial tumour, were suggestive of the first report of spinal ectopic choroid plexus papilloma in a cat. The long-term outcome of 24 months with neurological improvement adds to these findings.

## Conclusions

This case report outlines a challenging diagnosis of ectopic spinal choroid plexus papilloma without a primary intracranial neoplasm. The importance of immunohistochemical evaluation aligned with histological growth pattern were crucial to the characterisation and differential diagnosis of this neoplasm, which was reinforced by survival time without reoccurrence.

**Acknowledgements** We thank the VPG Histology laboratory for its essential contribution.

**Author note** This case report was presented as a poster abstract at the 32nd Annual Symposium of the ESVN-ECVN, Wrocław, Poland.

**Conflict of interest** The authors declared no potential conflicts of interest with respect to the research, authorship, and/or publication of this article.

**Funding** The authors received no financial support for the research, authorship, and/or publication of this article.

**Ethical approval** This work involved the use of non-experimental animals only (including owned or unowned animals and data from prospective or retrospective studies). Established internationally recognised high standards ('best practice') of individual veterinary clinical patient care were followed. Ethical approval from a committee was therefore not specifically required for publication in *JFMS Open Reports*.

**Informed consent** Informed consent (either verbal or written) was obtained from the owner or legal custodian of all animal(s) described in this work (either experimental or non-experimental animals) for the procedure(s) undertaken (either prospective or retrospective studies). For any animals or people individually identifiable within this publication, informed consent (either verbal or written) for their use in the publication was obtained from the people involved.

**ORCID ID** Clare Rusbridge  <https://orcid.org/0000-0002-3366-2110>

## References

- 1 Horne TRJ, Powers RD and Swaim SF. **Dorsal laminectomy techniques in the dog.** *J Am Vet Med Assoc* 1977; 171: 742–749.
- 2 Dziegielewska KM, Ek J, Habgood MD, et al. **Development of the choroid plexus.** *Microsc Res Tech* 2001; 52: 5–20.
- 3 Liddel SA. **Development of the choroid plexus and blood-CSF barrier.** *Front Neurosci* 2015; 9: 32.
- 4 de Lahunta A, Glass E and Kent M. *de Lahunta's veterinary neuroanatomy and clinical neurology.* 5th ed. Philadelphia, PA: Elsevier, 2020.
- 5 Summers BA, Cummings JF and de Lahunta A. *Veterinary neuropathology.* St Louis, MO: Mosby-Year Book, 1995.
- 6 Vandevelde M, Higgins RJ and Oevermann A. *Veterinary neuropathology: essentials of theory and practice.* Chichester: Wiley-Blackwell, 2012.
- 7 Westworth DR, Dickinson PJ, Vernau W, et al. **Choroid plexus tumors in 56 dogs (1985–2007).** *J Vet Intern Med* 2008; 22: 1157–1165.
- 8 Johnson GC, Coates JR and Winger F. **Diagnostic immunohistochemistry of canine and feline intracranial tumors in the age of brain biopsies.** *Vet Pathol* 2014; 51: 146–160.
- 9 Troxel MT, Vite CH, Van Winkle TJ, et al. **Feline intracranial neoplasia: retrospective review of 160 cases (1985–2001).** *J Vet Intern Med* 2003; 17: 850–859.
- 10 Cossic B, Silver G, Kent M, et al. **Surgical removal of a choroid plexus oncocyoma in an adult cat.** *J Small Anim Pract* 2017; 58: 589–592.
- 11 Vernau KM, Higgins RJ, Bollen AW, et al. **Primary canine and feline nervous system tumors: intraoperative diagnosis using the smear technique.** *Vet Pathol* 2001; 38: 47–57.
- 12 Paulus W, Brandner S, Hawkins C, et al. **Choroid plexus tumours.** In: Louis DN, Ohgaki H, Wiest OD, et al (eds). *WHO classification of tumours of the central nervous system.* 4th ed. Lyon: International Agency for Research on Cancer, 2016, pp 123–130.
- 13 Reginato A, Girolami D, Menchetti L, et al. **E-cadherin, N-cadherin expression and histologic characterization of canine choroid plexus tumors.** *Vet Pathol* 2016; 53: 788–791.
- 14 Dalton MF, Stilwell JM, Krimer P, et al. **Clinicopathologic features, diagnosis, and characterization of the immune cell population in canine choroid plexus tumors.** *Front Vet Sci* 2019; 6. DOI: 10.3389/fvets.2019.00224.
- 15 Muscatello LV, Avallone G, Serra F, et al. **Glomeruloid microvascular proliferation, desmoplasia, and high proliferative index as potential indicators of high grade canine choroid plexus tumors.** *Vet Pathol* 2018; 55: 391–401.
- 16 Ribas JL, Mena H, Braund KG, et al. **A histologic and immunocytochemical study of choroid plexus tumors of the dog.** *Vet Pathol* 1989; 26: 55–64.
- 17 Ide T, Uchida K, Kikuta F, et al. **Immunohistochemical characterization of canine neuroepithelial tumors.** *Vet Pathol* 2010; 47: 741–750.
- 18 Nentwig A, Higgins RJ, Francey T, et al. **Aberrant E-cadherin,  $\beta$ -catenin, and glial fibrillary acidic protein (GFAP) expression in canine choroid plexus tumors.** *J Vet Diagn Invest* 2012; 24: 14–22.
- 19 Hirose N, Uchida K, Matsunaga S, et al. **Expression of cell adhesion molecules in canine choroid plexus tumors.** *J Vet Med Sci* 2015; 77: 255–259.
- 20 Choi EJ, Sloma EA and Miller AD. **Kir7.1 immunoreactivity in canine choroid plexus tumors.** *J Vet Diagn Invest* 2016; 28: 464–468.
- 21 Woolford L, de Lahunta A, Baiker K, et al. **Ventricular and extraventricular ependymal tumors in 18 cats.** *Vet Pathol* 2012; 50: 243–251.
- 22 Michimae Y, Morita T, Sunagawa Y, et al. **Anaplastic ependymoma in the cervical spinal cord of a Maltese dog.** *J Vet Med Sci* 2004; 66: 1155–1158.
- 23 Figarella-Branger D, Lepidi H, Poncet C, et al. **Differential expression of cell adhesion molecules (CAM), neural CAM and epithelial cadherin in ependymomas and choroid plexus tumors.** *Acta Neuropathol* 1995; 89: 248–257.
- 24 Patnaik AK, Erlandson RA, Lieberman PH, et al. **Choroid plexus carcinoma with meningeal carcinomatosis in a dog.** *Vet Pathol* 1980; 17: 381–385.
- 25 Yeamans CL, Gutierrez-Quintana R, Haley A, et al. **Magnetic resonance imaging and clinical findings associated with choroid plexus spinal cord 'drop' metastases.** *J Am Anim Hosp Assoc* 2017; 53: 265–269.
- 26 Oura TJ, Early PJ, Jennings SH, et al. **Canine choroid plexus tumor with intracranial dissemination presenting as multiple cystic lesions.** *Case Rep Vet Med* 2013; 2013. DOI: 10.1155/2013/759054.
- 27 Bekiesinska-Figatowska M, Madzik J, Biejat A, et al. **Choroid plexus carcinoma of the spinal canal without cranial lesion.** *Eur J Radiol Extra* 2009; 72: 107–109.
- 28 Boldorini R, Panzarasa G, Girardi P, et al. **Primary choroid plexus papilloma of the sacral nerve roots: case report.** *J Neurosurg Spine* 2009; 10: 51–53.
- 29 Kurtkaya-Yapici Ö, Scheithauer BW, Van Peteghem KP, et al. **Unusual case of extradural choroid plexus papilloma of the sacral canal: case report.** *J Neurosurg* 2002; 97: 102–105.
- 30 Gross E, Koplewitz BZ, Arbell D, et al. **Ectopic presacral choroid plexus cyst in a neonate.** *J Pediatr Surg* 2009; 44: e13–e15.
- 31 Dwarakanath S, Suri A, Mahapatra AK, et al. **Intramedullary ectopic choroid plexus: report of a rare case.** *Neurosurgery* 2005; 56: 869. DOI: 10.1227/01.neu.0000156491.02087.83.
- 32 Duan H, Zhang J, Xu F, et al. **Syringomyelia with intramedullary ectopic choroid plexus: case report.** *Clin Neurol Neurosurg* 2018; 169: 34–36.
- 33 Sampath S, Nitin G, Yasha TC, et al. **Does choroid plexus tumour differ with age?** *Br J Neurosurg* 2008; 22: 373–388.
- 34 Nishida H, Yamazaki M, Sakai H, et al. **Intracranial ectopic choroid plexus cyst in a dog.** *J Vet Med Sci* 2019; 81: 365–368.
- 35 Pardo ID, Shoieb AM, Garman R, et al. **Spontaneous ectopic choroid plexus with sclerosis in adult Beagle dogs.** *Toxicol Pathol* 2018; 46: 608–609.