

## **Genetic Diversity and Structure in the Philippine *Rafflesia lagascae* Complex (Rafflesiaceae) Inform Its Taxonomic Delimitation and Conservation**

Authors: Pelser, Pieter B., Nickrent, Daniel L., Gemmill, Chrissen E. C., and Barcelona, Julie F.

Source: Systematic Botany, 42(3) : 543-553

Published By: The American Society of Plant Taxonomists

URL: <https://doi.org/10.1600/036364417X696186>

---

BioOne Complete ([complete.BioOne.org](https://complete.BioOne.org)) is a full-text database of 200 subscribed and open-access titles in the biological, ecological, and environmental sciences published by nonprofit societies, associations, museums, institutions, and presses.

Your use of this PDF, the BioOne Complete website, and all posted and associated content indicates your acceptance of BioOne's Terms of Use, available at [www.bioone.org/terms-of-use](https://www.bioone.org/terms-of-use).

Usage of BioOne Complete content is strictly limited to personal, educational, and non - commercial use. Commercial inquiries or rights and permissions requests should be directed to the individual publisher as copyright holder.

---

BioOne sees sustainable scholarly publishing as an inherently collaborative enterprise connecting authors, nonprofit publishers, academic institutions, research libraries, and research funders in the common goal of maximizing access to critical research.

## Genetic Diversity and Structure in the Philippine *Rafflesia lagascae* Complex (*Rafflesiaceae*) Inform Its Taxonomic Delimitation and Conservation

Pieter B. Pelser,<sup>1,4</sup> Daniel L. Nickrent,<sup>2</sup> Chrissen E. C. Gemmill,<sup>3</sup> and Julie F. Barcelona<sup>1</sup>

<sup>1</sup>School of Biological Sciences, University of Canterbury, Private Bag 4800, Christchurch 8140, New Zealand

<sup>2</sup>Department of Plant Biology, Southern Illinois University Carbondale, 1125 Lincoln Drive, Carbondale, Illinois 62901-6509, U. S. A.

<sup>3</sup>School of Science, University of Waikato, Private Bag 3105, Hamilton 3240, New Zealand

<sup>4</sup>Author for correspondence (pieter.pelser@canterbury.ac.nz)

Communicating Editor: Sasa Stefanović

**Abstract**—*Rafflesia lagascae* is a rare endo-holoparasitic species with a disjunct distribution on Luzon Island. It is morphologically very similar to *R. manillana* from nearby Samar. This study aims to contribute to the taxonomy and conservation of *R. lagascae* and *R. manillana* (i.e. the *R. lagascae* complex) by resolving their patterns of genetic diversity and structure. The results of analyses of a microsatellite data set indicate that despite their frequently extremely small sizes and geographic isolation, *Rafflesia* populations display moderate genetic diversity and do not show evidence of pronounced inbreeding. Most populations appear to have limited gene flow among them. Patterns of genetic diversity of staminate and pistillate *Rafflesia* flowers growing on the same *Tetrastigma* host plants indicate that the *R. lagascae* complex is monoecious and that host plants are regularly infected by multiple *Rafflesia* plants. PCoA and Bayesian cluster analyses show that the complex is composed of three genetically isolated taxa. One of these constitutes *R. manillana*, supporting the morphology-based hypothesis that it is taxonomically distinct from *R. lagascae*. The second taxon in this complex is composed of a morphologically cryptic *R. lagascae* population from Mt. Labo, which is genetically distinct from all remaining *R. lagascae* populations that were studied and that form the third taxon. We recommend that these three taxa are managed as different conservation entities.

**Keywords**—Microsatellites, parasitic plants, rare species, species complex, taxonomy.

The host species of parasitic plants form essential components of their environment (Sandner and Matthies 2017). Their distribution patterns constitute the maximum potential distribution area of the parasitic plant species that depend on them for their existence (Costea and Stefanović 2009) in the same way that specialists of a rare habitat are confined to areas where this habitat is found (e.g. Medrano and Herrera 2008; Williams et al. 2016) and the distribution of elevation specialists is constrained by topography (e.g. Laurance et al. 2011). When the prerequisite conditions on which specialist plant species depend are rare, so are these species. Consequently, some specialist plants have small population sizes and are restricted to a single small area (e.g. de Lange 2003) or have a disjunct distribution pattern (e.g. Medrano and Herrera 2008). This makes these species vulnerable to inbreeding and genetic drift as a result of a loss of genetic connectivity between populations due to habitat fragmentation and degradation (e.g. Ellstrand and Elam 1993; Schmidt and Jensen 2000; Stanton et al. 2009; Williams et al. 2016). This might ultimately result in a loss of genetic diversity and thereby increase the probability that small and isolated populations go extinct (Schmidt and Jensen 2000). Indeed, many parasitic plant species are rare and listed as threatened or endangered (Marvier and Smith 1997; Sandner and Matthies 2017). Parasitic species that are very host specific are especially at risk, because they are particularly sensitive to changes in host availability and typically have small distribution areas (Costea and Stefanović 2009).

*Rafflesia* R.Br. (*Rafflesiaceae*) is a Southeast Asian plant genus of ca. 36 species (Hidayati and Walck 2016), all of which are obligate endo-holoparasites of *Tetrastigma* (Miq.) Planch. (Vitaceae; Meijer 1997; Nais 2001; Pelser et al. 2016). The Philippines is one of the centers of *Rafflesia* diversity (Barcelona et al. 2009) and is home to 13 currently recognized species (Pelser et al. 2011 onwards; Barcelona et al. 2014; Galindon et al. 2016), which are all endemic to the country. *Rafflesia lagascae* Blanco (1845) is arguably the most common *Rafflesia* species in the Philippines and has the largest distributional

area (Barcelona et al. 2009). However, although it can be found throughout the island of Luzon (Fig. 1), it has a highly disjunct distribution and is only known from 15 small areas. In some of these areas, it is only known from one or a few individual host plants belonging to three species of *Tetrastigma* (Pelser et al. 2016). Because of the small number of *R. lagascae* populations and the extremely small size of many of them, as well as its narrow host range, this species might be particularly prone to genetic diversity loss following habitat fragmentation and degradation. This is potentially a significant conservation factor, because the Philippine tropical rainforest, to which this species is confined, has been reduced to an estimated 3–6% of its original cover (Mittermeier et al. 1998; Ong et al. 2002). Moreover, remaining tropical forest habitat has become highly degraded and fragmented as a result of human activities such as logging, mining, and land conversion for agriculture (Barcelona et al. 2009). To better understand the conservation needs of *R. lagascae* and to improve its management, information about its patterns of genetic diversity and genetic structure are needed. These patterns would, for instance, enable the identification of the populations that have the lowest genetic diversity and least genetic connectivity with other populations and that are therefore most at risk of inbreeding and genetic drift.

At present, nothing is known about patterns of genetic diversity and structure in any *Rafflesia* species. Previous molecular genetic studies of *Rafflesia* have focused on horizontal gene transfer from their hosts (Davis and Wurdack 2004; Nickrent et al. 2004; Xi et al. 2012, 2013), their evolutionary relationships and diversification (Barkman et al. 2004, 2008; Nickrent et al. 2004; Davis et al. 2007; Bendiksby et al. 2010), the molecular regulation of flower development (Nikolov et al. 2013; Ramamoorthy et al. 2013), and the possible loss of their chloroplast genome (Molina et al. 2014), but none have addressed research questions at the infraspecific level. Because of the absence of molecular genetic data for *Rafflesia* at the levels of individuals and populations, not only are their patterns of genetic diversity and genetic structure unknown, but



FIG. 1. Distribution of all currently known populations of *R. lagascae* and *R. manillana*. Black dots indicate populations that were sampled for this study. Grey dots are populations that could not be sampled. The dotted line indicates the approximate position of the Guinyangan fault (Besana and Ando 2005) and marks the area where the Bicol Peninsula connects with mainland Luzon. Faint dotted lines indicate provincial boundaries.

other aspects of their biology also remain to be discovered. For example, most *Rafflesia* species, including *R. lagascae*, have unisexual flowers, but it is not known if they are dioecious or monoecious (Nais 2001). It is difficult to determine plant sexuality without genetic data, because of their endoparasitic nature (Balete et al. 2010). In other words, it is not possible to determine if staminate and pistillate flowers that emerge from the same host belong to the same genetically identical individual endophyte. Because self-incompatible plants might be more vulnerable to a loss of genetic diversity resulting from habitat fragmentation (Stanton et al. 2009), knowing if

*R. lagascae* is monoecious or dioecious is relevant for its conservation management. Similarly, it is presently unclear if *Tetrastigma* vines can be host to more than one *Rafflesia* individual. This basic information about *Rafflesia* will enable more accurate estimates of population sizes and thereby contribute to their conservation management.

Population-level genetic data are also needed to inform the taxonomic delimitation of *R. lagascae*. This species is morphologically very similar to *R. manillana* Teschem. (Teschemacher 1844; Fig. 2) and both taxa were considered synonymous until relatively recently (Madulid et al. 2008; Pelser et al. 2013). Whereas *R. lagascae* is endemic to Luzon, *R. manillana* has only been reported from Basey municipality on Samar Island. The two allopatric species are of similar sizes (11–24 vs. 11–16 cm diam; Madulid and Agoo 2008; Barcelona et al. 2009) and primarily differ in the color of the floral diaphragm and the relative size of the diaphragm aperture (Pelser et al. 2013; Fig. 2), but it is presently unclear if these morphological differences are indicative of species level genetic differences. *Rafflesia manillana* is currently only known from a single population and is considered critically endangered by Madulid and Agoo (2008). Therefore, if despite their morphological differences both taxa are genetically indistinct, the conservation status of *R. manillana* would need to be revised.

In this study, we provide the first examination of the patterns of genetic diversity and genetic structure of *R. lagascae* and *R. manillana* (from here on collectively referred to as the *R. lagascae* complex). Specifically, we aim 1) to identify populations that have low genetic diversity, 2) to determine if taxa in the *R. lagascae* complex are monoecious or dioecious and if *Tetrastigma* plants can host more than one *Rafflesia* individual, and 3) to resolve the taxonomic delimitation of the *R. lagascae* complex.

## MATERIALS AND METHODS

**Specimen Sampling**—Tissue samples on silica gel and voucher specimens preserved in 70% denatured alcohol were collected from 13 of the 16 areas from which members of the *R. lagascae* complex have been reported. For the three unsampled areas (Adams, Ilocos Norte Prov.; Barlig, Mountain Prov.; Calanasan, Apayao Prov.; Fig. 1), collecting permits or samples could not be secured in time for this study. Tissue was taken from at least one flower or flower bud from each infected host plant that was encountered, with a maximum of six samples taken per site (i.e. one or more infected host plants in close vicinity of each other and geographically isolated from other such sites). Nearby host plants were considered distinct individuals if they were unambiguously spatially separated from each



FIG. 2. Flowers of the three *Rafflesia* taxa identified in this study. A. *R. lagascae* s. s. B. Mt. Labo *R. lagascae*. C. *R. manillana*.

other. When possible, damage to *Rafflesia* plants was minimized by removing a small amount of tissue from the diaphragm or the perigone lobes of the flowers, which is not expected to affect their reproductive function. When flower buds were encountered, we sampled tissue from the perigone lobes or disk of young flower buds while carefully avoiding sampling from the cupula area where the tissues of the parasite and host intertwine. *Rafflesia* species have a high bud mortality rate (50–90%; Nais 2001 and references therein) and we therefore considered sampling from young buds as having a lower negative impact on the reproductive success of plants than sampling from mature buds that have escaped the causes of early mortality (e.g. nutrient limitation, predation by animals, infection by wasps; Nais 2001) and are likely to survive until the flowering stage. Voucher specimens (Appendix 1) are deposited at CAHUP, CANU, PNH, and SIU (acronyms follow Thiers 2017).

**Development of Microsatellite Primers**—Contigs from a previously published Illumina sequence library of *R. lagascae* obtained from a sample of this species from Bolos Point (see Molina et al. 2014 for assembly methodology; NCBI Sequence Read Archive SRX434531, Bioproject PRJNA235228; Fig. 1) were screened using MSATCOMMANDER 1.0.8-beta (Faircloth 2008) for microsatellite loci of two or three nucleotides with a minimum of 15 repeats. This resulted in the identification of 1,254 microsatellite loci. The embedded Primer3 software (Rozen and Skaletsky 1999) subsequently designed M13-tagged universal primers for these using the following settings: melting temperatures ( $T_m$ ) of 58–60°C, GC content of 40–60%, and fragment sizes of 100–450 bp. This resulted in primers for 37 loci, which were screened for amplification success and specificity using DNA of four *R. lagascae* specimens. A total of 17 polymorphic loci (Table 1) were subsequently used for genotyping the additional DNA samples of *R. lagascae* and *R. manillana* available to us. A blastn search using the contig DNA sequences that contain these 17 loci did not reveal resemblance with available Vitaceae genomic data in GenBank. We therefore assume that none of these loci are present in the genome of *R. lagascae* as a result of horizontal gene transfer from their host plants.

**DNA Extraction and Microsatellite Genotyping**—Total genomic DNA for the microsatellite genotyping analyses was extracted using the Qiagen

DNeasy plant mini kit (Qiagen, Germantown, Maryland) following the manufacturer's protocol. Multiplex PCR analyses using up to four primer combinations per PCR sample were performed in a total volume of 4  $\mu$ l using the Qiagen Type-it microsatellite PCR kit. These samples contained 1  $\mu$ l of genomic DNA (ca. 2–60 ng per sample), 2  $\mu$ l of 2  $\times$  PCR master mix, 0.16 pmol of M13-tagged primer, 0.64 pmol of untagged primer, 2 pmol of M13 fluorescent-labeled primer (6FAM, NED, PET, or VIC; 5'-GGAAACAGCTATGACCAT-3') and nuclease-free water to volume. The PCR conditions were as follows: an initial denaturation of 5 min at 95°C followed by 30 sec at 95°C, 90 sec at 60°C, 30 sec at 72°C, during 28 cycles, and a final extension of 30 min at 60°C. The PCR products were run on an ABI 3130xL Genetic Analyzer at the University of Canterbury. Geneious 6.1.7 (Biomatters Ltd, Auckland, New Zealand) was used to determine fragment lengths.

**Data Analyses**—We genotyped 143 DNA samples of the *R. lagascae* complex obtained from 80 host plants. Microsatellite data of 98 of these samples were included in our analyses. A total of 45 DNA samples were excluded, because these had identical genotypes to those of other flowers or buds obtained from the same host plant and might therefore represent the same *Rafflesia* individual.

Exact tests for deviations from Hardy-Weinberg equilibrium and linkage disequilibrium were performed with GENEPOP v. 4.2 (Raymond and Rousset 1995) as implemented in GenePop on the web (<http://genepop.curtin.edu.au/>) and significance levels were adjusted for multiple tests using the B-Y method FDR at  $p = 0.05$  (Narum 2006). Only loci found to display significant linkage disequilibrium across all populations were considered to be linked. Micro-checker v. 2.2.3 (Van Oosterhout et al. 2004) was used to check for null alleles (95% confidence interval; 1,000 repetitions). Only loci indicated to display null alleles across all populations were considered to be truly producing null alleles.

GenAlEx v. 6.5 (Peakall and Smouse 2012) was used to assess the genetic diversity of each population by calculating the percentage of polymorphic loci, allelic richness (mean number of alleles and number of effective alleles), observed ( $H_o$ ) and expected ( $H_e$ ) heterozygosity, unbiased heterozygosity ( $uH_e$ ), and the inbreeding coefficient. BOTTLENECK 1.2.0.2.

TABLE 1. Characteristics of microsatellite loci for *Rafflesia lagascae* and *R. manillana*. Annealing temperature was 60°C for all loci. Underlined nucleotides within primers indicate the M13 tag.

Locus	Primer sequences (5'–3')	Repeat motif	Allele size range (bp)	GenBank accession no.
Man78	F: CCTTGTCAGT <u>CCCC</u> ATTTC R: <u>GGAAACAGCTATGACCAT</u> CAGTTCATGCGGACCCATC	AG	186–232	KX212099
Man80	F: TCAGGATTCGTGAGCCAAGG R: <u>GGAAACAGCTATGACCAT</u> AACACAGGCCGAAGTTGATC	AC	269–297	KX212101
Man109	F: ACGTAGTCATCCATTGAAAGGG R: <u>GGAAACAGCTATGACCAT</u> ACTTGCCAGCCAGCTTC	AC	376–406	KX212086
Man111	F: GTTGGATTCATCAGTTTCATGC R: <u>GGAAACAGCTATGACCAT</u> CACCTTCGGCATTATCCTG	AC	398–449	KX212087
Man120	F: TGTACTTTTGTCTGCCCTTAC R: <u>GGAAACAGCTATGACCAT</u> GTGTATTCCAACGAGCAGG	AG	186–206	KX212091
Man142	F: <u>GGAAACAGCTATGACCAT</u> ACCCAGGCAAGCGAAGTAC R: TTCAATTTGTGAAGAAGACGAGC	AG	328–346	KX212092
Man144	F: <u>GGAAACAGCTATGACCAT</u> TTCCCTTTCAGCCAGTCGG R: GTACTCATGAGGTTGTTGGCG	AC	179–195	KX212093
Man166	F: <u>GGAAACAGCTATGACCAT</u> GCCCATACATATCCATACACC R: CCAAAGCTCACACAAAGGAG	AC	101–145	KX212094
Man171	F: <u>GGAAACAGCTATGACCAT</u> GCCGCTTCACCATTAATC R: AGAAGCGAGGTGAAATGATCTC	AAT	238–265	KX212095
Man273	F: GCGTGGTTCATTCATGGAGG R: <u>GGAAACAGCTATGACCAT</u> AACTTCAGGCCCTTCTCTCG	AC	203–238	KX212096
Man553	F: <u>GGAAACAGCTATGACCAT</u> CCACATGCACTCTACCCCTC R: TGAGAAAGACTTTGGGAGATGG	AC	162–197	KX212097
Man714	F: <u>GGAAACAGCTATGACCAT</u> GTGCGTGCATAACTAACCC R: CATTAGGCTCTGCACACCTTG	AC	220–288	KX212098
Man788	F: <u>GGAAACAGCTATGACCAT</u> CCCTTCACTTCCACACTACACC R: AGAGATGGGTGGGAAAGGAAG	AG	334–352	KX212100
Man866	F: ATCTACATGAGTCTGTGTGCC R: <u>GGAAACAGCTATGACCAT</u> ACAGTTACACAGAGACACTTGG	AC	147–171	KX212102
Man1134	F: <u>GGAAACAGCTATGACCAT</u> CTAGACCTTGGTTTGGG R: TTTAGCTGGGTTTGGAGGG	AC	439–464	KX212088
Man1169	F: CTTTGGTTCGAGTAAGGCTAGTC R: <u>GGAAACAGCTATGACCAT</u> CTCAACTTCAATGCGTGC	AC	130–176	KX212089
Man1193	F: <u>GGAAACAGCTATGACCAT</u> CCCTCTCCCACTATTTATCGAC R: ACAAGCAAGGAAGATAGACGG	AG	331–356	KX212090

(Cornuet and Luikart 1997) was used to test for recent genetic bottlenecks in the six *Rafflesia* populations from which at least nine genetically unique samples were available. Wilcoxon sign-rank tests were used to determine if excesses in heterozygosity are statistically significant. Mode-shift tests in BOTTLENECK were employed to identify shifts in allele frequencies.

Genetic structure was studied by determining the number of private alleles for each population in GenAlEx. In addition, an analysis of molecular variance (AMOVA;  $F_{st}$ , 999 permutations) was carried out in GenAlEx with a data set from which samples from Mt. Banahaw and Mt. Mangan were excluded because only one *Rafflesia* sample was collected from each of these two areas. Bayesian model-based clustering analyses were performed with STRUCTURE v. 2.3.4 (Pritchard et al. 2000; Falush et al. 2003, 2007) using the admixture model and correlated allele frequencies. These analyses were run with K values from 1–20 and with 20 iterations for each K value. Each analysis was run for 200,000 generations of which the first 100,000 were discarded as burn-in. The STRUCTURE output was summarized using STRUCTURE HARVESTER (Earl and von Holdt 2012) to determine the value of K that best explains the genetic structure in the data. For this, both the Evanno et al. (2005) method (K with the highest value of  $\Delta K$ ) and the method of Pritchard et al. (2000; K with the highest Pr (X|K)) were used. CLUMPAK 1.1 (Kopelman et al. 2015) was used for the summation and graphical presentation of the STRUCTURE results. GenAlEx was subsequently used for a Principal Coordinate Analysis (PCoA) using a covariance matrix of co-dominant genotypic pairwise distances between individual samples with data standardization.

Mantel tests (999 replicates) were used in GenAlEx to test for a correlation between geographic distance and co-dominant genotypic distance between individuals. These tests were executed with non-transformed geographic distances as well as with a data set in which these distances were transformed using the natural logarithm.

## RESULTS

Patterns of genetic diversity and genetic structure in the *R. lagascae* complex were studied using microsatellite data from 17 loci. These loci yielded a total of 249 different alleles. The number of alleles per locus across all populations ranged from 5 to 33 (mean 14.59). After B-Y correction (Narum 2006), two of the 13 populations that were included in our study (Bolos Point and Mt. Irid) showed a significant ( $p = 0.05$ ) deviation from Hardy-Weinberg proportions because of a deficit of heterozygotes (Table 2). Overall, however, the observed heterozygosity ( $H_o = 0.60$ ) was only slightly higher or lower than estimates of the expected heterozygosity ( $H_e = 0.53$ ,  $uH_e = 0.64$ ). None of the pairs of loci displayed significant linkage disequilibrium across all populations and none of the 17 loci showed evidence of producing null alleles across all populations.

For 32 of the 80 *Tetrastigma* host plants of the *R. lagascae* complex that were examined, more than one *Rafflesia* flower or flower bud was genotyped. Two different *Rafflesia* genotypes were obtained from 17 of these hosts (53%), and three different parasite genotypes were recovered from one host plant. A total of 57 of the 93 (61%) *Rafflesia* flowers for which sex could be determined were staminate. Staminate and pistillate flowers with identical genotypes were found on four host plants from the Basey, Bolos Point, Maria Aurora, and Mt. Malinao populations. Non-identical *Rafflesia* genotypes from the same host have a mean co-dominant genetic distance of 16.5 ( $n = 18$ ; range 1–32). *Rafflesia* samples that were obtained from different hosts were all genetically different.

Populations at Bolos Point, Mt. Irid, and Salazar show the highest levels of genetic diversity as measured by the percentage of polymorphic loci, their allelic richness, and heterozygosity (Table 2). The inbreeding coefficient is low for the species complex as a whole ( $F_{IS} = -0.14$ ). It is highest for the *R. manillana* population (Basey;  $F_{IS} = 0.11$ ) and the Mt. Irid population of *R. lagascae* ( $F_{IS} = 0.12$ ). Wilcoxon tests in

TABLE 2. Genetic diversity and number of private alleles observed at 17 microsatellite loci for 13 populations of the *R. lagascae* complex. Number of *Tetrastigma* host plants from which *Rafflesia* samples were taken, number of *Rafflesia* samples, percentage of polymorphic loci (P), allelic richness (Na), number of effective alleles (Na(p)), observed heterozygosity ( $H_o$ ), expected heterozygosity ( $H_e$ ), unbiased expected heterozygosity ( $uH_e$ ), and inbreeding coefficient ( $F_{IS}$ ). SE = Standard Error. \*Populations with a significant deviation from Hardy-Weinberg proportions due to heterozygote deficits after B-Y correction (Narum 2006).

Population	Protected area	# Hosts sampled	# <i>Rafflesia</i> samples	P	Na (SE)	Ne (SE)	Na(p)	$H_o$ (SE)	$H_e$ (SE)	$uH_e$ (SE)	$F_{IS}$ (SE)
Aurora Memorial Natural Park		7	9	100%	5.47 (0.67)	4.09 (0.59)	6	0.67 (0.06)	0.67 (0.05)	0.71 (0.05)	-0.01 (0.05)
Bolos Point	No protective status	11	13	100%	7.82 (0.64)	5.14 (0.52)	21	0.75 (0.05)	0.76 (0.04)	0.79 (0.04)	0.01 (0.05)*
Burgos	Pantabangan-Carranglan Watershed Forest Reserve	4	4	94%	4.18 (0.31)	3.19 (0.28)	4	0.58 (0.06)	0.63 (0.05)	0.72 (0.06)	0.05 (0.08)
Maria Aurora	No protective status	2	3	88%	3.06 (0.29)	2.60 (0.24)	1	0.73 (0.09)	0.54 (0.06)	0.69 (0.07)	-0.35 (0.09)
Mt. Banahaw	Mounts Banahaw-San Cristobal Protected Landscape	1	1	65%	1.65 (0.12)	1.65 (0.12)	1	0.65 (0.12)	0.32 (0.06)	0.65 (0.12)	-1.00 (0.00)
Mt. Irid	No protective status	8	12	100%	6.65 (0.73)	4.48 (0.52)	11	0.66 (0.07)	0.71 (0.05)	0.74 (0.05)	0.12 (0.07)*
Mt. Labo	No protective status	20	21	100%	3.94 (0.36)	2.52 (0.25)	6	0.48 (0.05)	0.52 (0.05)	0.54 (0.06)	0.07 (0.04)
Mt. Makiling	Mt. Makiling Forest Reserve	4	5	94%	3.82 (0.46)	2.97 (0.43)	8	0.60 (0.08)	0.56 (0.05)	0.63 (0.06)	-0.07 (0.09)
Mt. Malinao	No protective status	2	2	59%	1.82 (0.29)	1.74 (0.28)	3	0.44 (0.11)	0.32 (0.07)	0.42 (0.10)	-0.39 (0.13)
Mt. Mangan	No protective status	1	1	65%	1.65 (0.12)	1.65 (0.12)	1	0.65 (0.12)	0.32 (0.06)	0.65 (0.12)	-1.00 (0.00)
Mt. Natib	Bataan National Park	2	3	82%	2.53 (0.26)	2.21 (0.24)	3	0.45 (0.09)	0.44 (0.06)	0.53 (0.08)	0.01 (0.12)
Salazar	Pantabangan-Carranglan Watershed Forest Reserve	8	11	100%	6.53 (0.70)	4.18 (0.48)	7	0.71 (0.06)	0.70 (0.04)	0.74 (0.04)	-0.01 (0.07)
Basey	Samar Island Natural Park	10	13	82%	3.29 (0.42)	2.36 (0.27)	7	0.43 (0.09)	0.46 (0.07)	0.49 (0.07)	0.13 (0.10)
Total means		80	98	87%	4.03 (0.18)	2.98 (0.12)	6.07	0.60 (0.02)	0.53 (0.02)	0.64 (0.02)	-0.14 (0.03)



BOTTLENECK did not reveal a significant excess of heterozygotes in the six populations that were included in these tests when a Stepwise Mutation Model was assumed. However, significant heterozygosity excess was found for the Aurora Memorial Natural Park (AMNP) and Basey populations under the Infinite Alleles Model and the Two Phase Model. The Bolos Point, Mt. Irid, and Mt. Labo populations only displayed significant heterozygosity excess under an Infinite Alleles Model. The AMNP population shows evidence of a shift in allelic frequencies.

All 13 populations of the *R. lagascae* complex have at least one private allele (Table 2). The Bolos Point and Mt. Irid populations have the most private alleles (21 and 11, respectively). Overall genetic differentiation within the *R. lagascae* complex is significant ( $F'_{ST} = 0.651$ ,  $p < 0.001$ ). A total of 22% of the genetic variation was found among populations and 9% among individuals. All pairwise  $F_{ST}$  values are statistically significant at  $p = 0.05$  after B-Y correction (Narum 2006), except for the population pairs Burgos-Salazar and Burgos-Mt. Irid (Table 3). Using the Pritchard et al. (2000) and Evanno et al. (2005) methods, the results of the STRUCTURE analysis identified three primary genetic clusters ( $K = 3$ ). One of these clusters is solely composed of specimens of the Basey population (*R. manillana*), the second cluster exclusively contains *R. lagascae* specimens from Mt. Labo, and all specimens of the remaining 11 *R. lagascae* populations form the third cluster (Fig. 3). The admixture proportions ( $q$  values) for individual specimens indicate very little admixture between the three clusters. The same genetic clusters were also recovered in a PCoA of pairwise genetic distances (Fig. 4).

To study patterns of genetic structure within *R. lagascae* s. s., STRUCTURE analyses were also performed with a data set that contains only populations of this group. For this data set, the Evanno et al. (2005) method favored  $K = 2$ , whereas the Pritchard et al. (2000) method preferred  $K = 8$ . The STRUCTURE plots of  $K = 2$  (Fig. 5A) show that the Bolos Point population in the northern part of Luzon (Fig. 1) is placed in the same genetic cluster as populations from the southern part of mainland Luzon (Mt. Banahaw, Mt. Makiling, Mt. Natib), and the Bicol peninsula (Mt. Malinao). The remaining populations of *R. lagascae* s. s. are found in central Luzon (AMNP, Burgos, Maria Aurora, Mt. Irid, Mt. Mingan, Salazar) and show a pattern of admixture between both genetic clusters (Fig. 5A). The  $K = 8$  STRUCTURE plots (Fig. 5B; only the major clustering pattern presented) show that some nearby populations have similar genetic profiles (AMNP, Maria Aurora, and Mt. Mingan; Burgos and Salazar), that some genetic clusters are predominantly found in individual populations

(e.g. Mt. Makiling, Mt. Natib, Mt. Irid), and that some populations are mostly composed of specimens with high  $q$  values for a single genetic cluster (e.g. AMNP, Mt. Makiling, Mt. Malinao). Overall genetic differentiation within the *R. lagascae* s. s. cluster is significant ( $F'_{ST} = 0.420$ ,  $p < 0.001$ ). A total of 12% of the genetic variation was found among populations and 9% among individuals. Within *R. lagascae* s. s., Mantel tests did not reveal a statistically significant positive correlation at  $p = 0.05$  between geographic and genetic distances.

## DISCUSSION

Because of the size of their flowers, which are among the largest in the world (Nais 2001), and their intriguing parasitic life style, *Rafflesia* species speak to the imagination of biologists and the general public alike. This fascination is further heightened by the fact that many *Rafflesia* species are very rare. For example, *R. schadenbergiana* Göpp. ex Hieron. (Hieronymus 1885) is currently known from only two living host plants (Barcelona et al. 2008; Pelser et al. 2016). As such, *Rafflesia* are flagships of plant conservation: the giant pandas of the plant world (Josephson 2000). Yet, to the best of our knowledge, conservation genetic studies have not previously been attempted and, consequently, nothing was thus far known about the patterns of genetic diversity and structure of *Rafflesia* species. This is not because of a lack of interest by biologists, but rather because of difficulties typically associated with studying rare species with small population sizes. Even *R. lagascae*, the most common and widespread species of *Rafflesia* in the Philippines, is only known from 15 areas and few *Tetrastigma* host plants. For that reason, it is difficult to attain sample sizes that provide enough statistical power to conclusively answer population genetic questions. Although we sampled 13 of the 16 known populations of the *R. lagascae* complex, and went through great efforts to locate as many host plants as possible, many *Rafflesia* populations appear to consist of only a single or very few host plants that produce only a few flowers and, consequently, yielded few samples for our molecular genetic analyses. For example, from two populations (Mt. Banahaw and Mt. Mingan) only a single sample could be obtained (Table 2). This means that, despite extensive sampling, our results should be interpreted with care and that our conclusions are tentative. However, although the absolute number of *Rafflesia* specimens that we sampled was small, the percentage of individuals sampled in each population is very high. Therefore, despite of low sample numbers in some populations, our research resulted in very accurate estimates of population allele frequencies.

TABLE 3. Pairwise  $F_{ST}$  values between populations of the *R. lagascae* complex. \*Non-significant pairwise comparisons after B-Y correction (Narum 2006).

		Bolos Point	Aurora Memorial Natural Park	Maria Aurora	Salazar	Burgos	Mt. Irid	Mt. Natib	Mt. Makiling	Mt. Malinao	Mt. Labo
<i>R. lagascae</i>	Bolos Point										
<i>R. lagascae</i>	Aurora Memorial Natural Park	0.088									
<i>R. lagascae</i>	Maria Aurora	0.100	0.053								
<i>R. lagascae</i>	Salazar	0.077	0.074	0.120							
<i>R. lagascae</i>	Burgos	0.099	0.087	0.127	0.004*						
<i>R. lagascae</i>	Mt. Irid	0.066	0.066	0.100	0.042	0.037*					
<i>R. lagascae</i>	Mt. Natib	0.147	0.209	0.263	0.184	0.192	0.169				
<i>R. lagascae</i>	Mt. Makiling	0.120	0.186	0.227	0.168	0.182	0.131	0.211			
<i>R. lagascae</i>	Mt. Malinao	0.254	0.309	0.393	0.209	0.282	0.239	0.385	0.387		
<i>R. lagascae</i>	Mt. Labo	0.232	0.318	0.373	0.283	0.343	0.275	0.386	0.304	0.413	
<i>R. manillana</i>	Basey	0.245	0.268	0.338	0.217	0.265	0.214	0.375	0.385	0.381	0.412

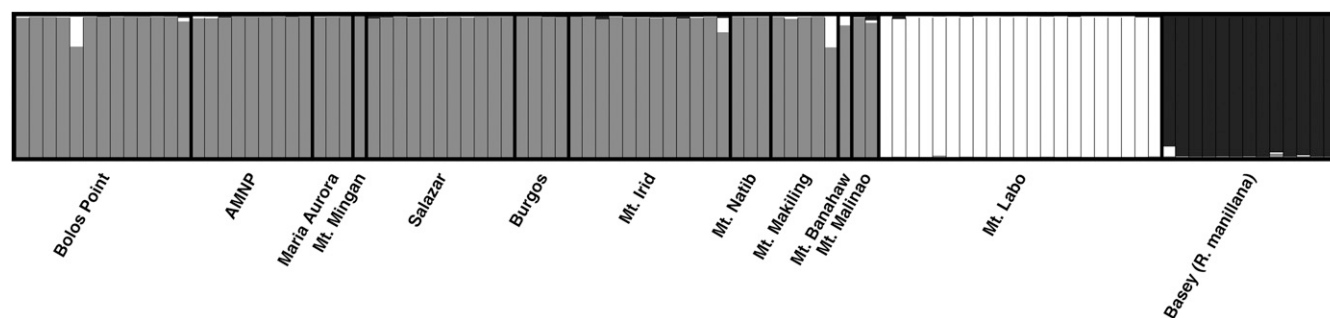


FIG. 3.  $K = 3$  STRUCTURE results for the *R. lagascae* complex. Each bar represents an individual plant and bar colors indicate the proportion of membership to each genetic cluster ( $q$  values). Individuals are grouped by population. ANMP = Aurora Memorial Natural Park.

**Breeding System and Co-infection of Hosts**—Genetically identical *Rafflesia* samples were exclusively obtained from the same host plant and *Rafflesia* samples from the same host plant that are not genetically identical have a mean co-dominant genetic distance of 16.5. This indicates that our microsatellite data set of 17 loci potentially provides enough resolution at the level of individuals to determine if plants of the *R. lagascae* complex are dioecious or monoecious. Under this assumption, our data indicate that this complex is monoecious, because genetically identical staminate and pistillate flowers were found on the same host plants. Previously, however, *Rafflesia* was hypothesized to be dioecious (e.g. Olah 1960; Beaman et al. 1988; Renner and Feil 1993; Bellot and Renner 2013; Wicaksono et al. 2016; but see Nais 2001 for more cautious statements). This reproductive strategy was considered more

likely because *Rafflesia* species are rare and populations are far apart. Dioecy was therefore regarded as a likely adaptation to avoid inbreeding depression (Beaman et al. 1988). Two species, *R. baletei* Barcelona and Cajano (Barcelona et al. 2006) and *R. verrucosa* Balete, Pelsner, Nickrent & Barcelona. (2010), however, have both stamens and a developed ovary on the same flower, although it is unknown if these are also functionally bisexual. In addition, non-functional stamens have been reported for some female flowers of *R. consueloae* Galindon, Ong and Fernando (2016). If plants of the *Rafflesia lagascae* complex and other *Rafflesia* species are monoecious, it remains to be determined if they are self-compatible and geitonogamous or exclusively outcrossing. A geitonogamous breeding system might benefit small *Rafflesia* populations, because it increases the number of available mates, however, it carries with it the

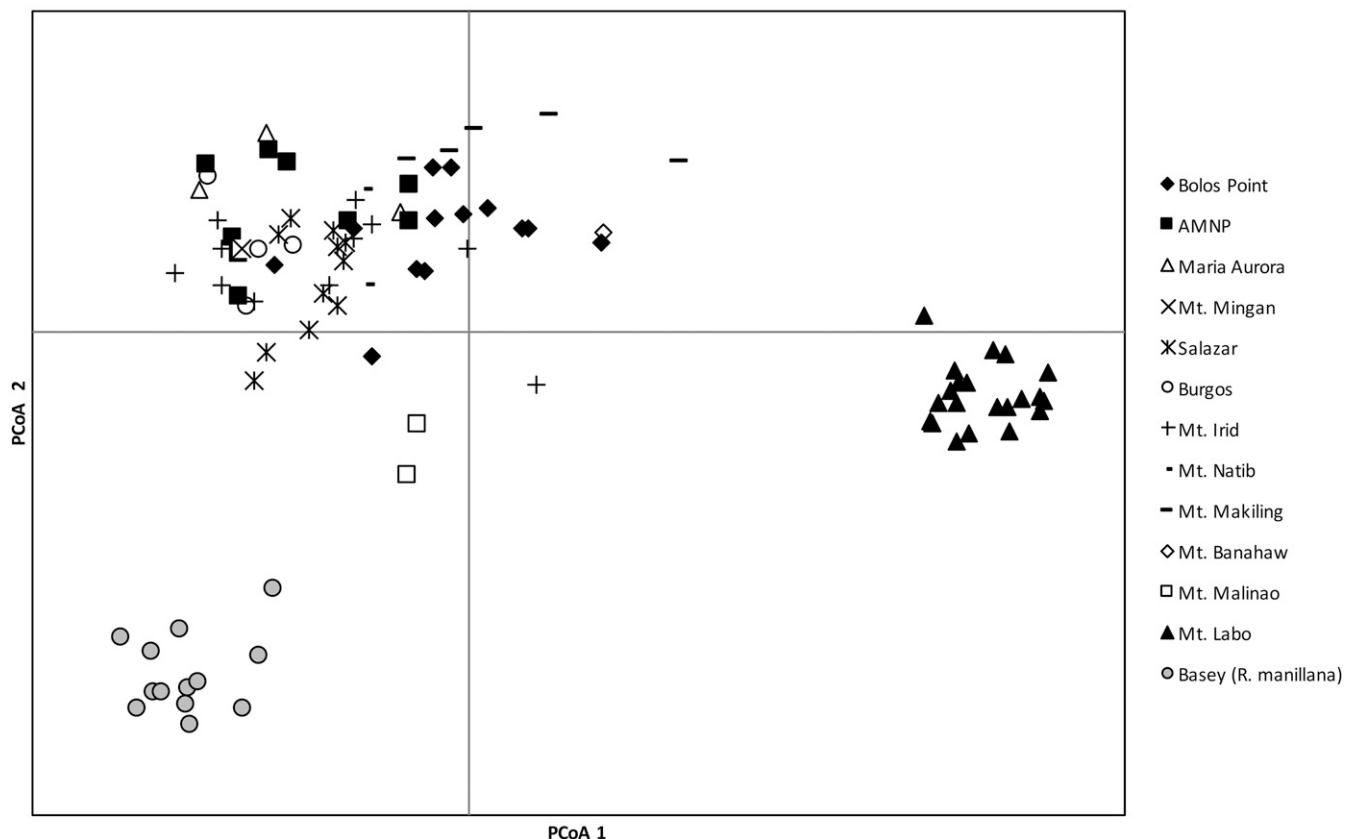


FIG. 4. The PCoA ordination of the *R. lagascae* complex using a covariance matrix of co-dominant genotypic pairwise distances between individual samples with data standardization. The first and second PCoA axes explain 15.5% and 8.6% of the variation respectively. ANMP = Aurora Memorial Natural Park.

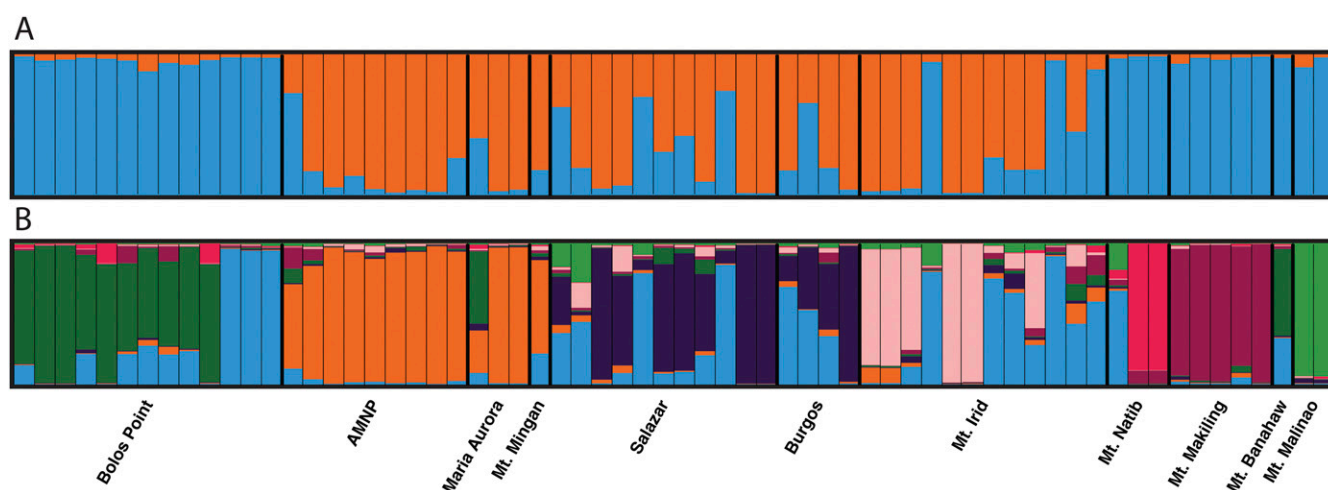


FIG. 5. STRUCTURE results for *R. lagascae* s. s. Each bar represents an individual plant and bar colors indicate the proportion of membership to each genetic cluster ( $q$  values). Individuals are grouped by population. A.  $K = 2$ . B.  $K = 8$ . Only the major clustering pattern is shown. ANMP = Aurora Memorial Natural Park.

potentially negative consequences of inbreeding (Byers and Meagher 1992; Ellstrand and Elam 1993). Some studies have suggested that dioecy is overrepresented in parasitic plants (Renner and Ricklefs 1995; Bellot and Renner 2013), but this hypothesis rests in part on the assumption that the presence of pistillate and staminate flowers of endophytic parasites on the same host belong to different parasite individuals (Bellot and Renner 2013). If endophytic parasites with unisexual flowers such as those in Apodanthaceae and Rafflesiaceae are indeed monoecious, then the incidence of dioecy among all parasites has been overestimated.

For *Tetrastigma* host plants from which more than one *Rafflesia* sample was taken, genetically different *Rafflesia* flowers were recovered from about half. This suggests that *Tetrastigma* host plants are regularly home to multiple genetically distinct *Rafflesia* individuals. Consequently, even populations composed of a single host plant can maintain genetic diversity. Potentially, the monoecious breeding system and co-infection of host plants enable the *R. lagascae* complex to maintain viable populations in areas with low host densities.

**Genetic Diversity**—The numbers of samples taken from each *Rafflesia* population can be considered as rough estimates of relative population sizes, because we sampled *Rafflesia* from nearly all encountered infected host plants that produced flower buds or flowers during our field work. Although smaller populations of the *R. lagascae* complex typically display less genetic diversity than larger populations, as measured by the percentage of polymorphic loci, allelic richness, and heterozygosity estimates, they are not genetically depauperate and do not show evidence of marked inbreeding (Table 2), as might be expected for small and isolated populations (Ellstrand and Elam 1993; although see Binks et al. 2015 and references therein). Overall, heterozygosity estimates are similar to those of other perennial plant species (Nybohm 2004). Six populations for which at least nine genetically unique samples were available were included in analyses to test for indications of recent genetic bottlenecks. Although we did not find evidence for a genetic bottleneck in the Salazar population, there are indications that the other populations (AMNP, Basey, Bolos Point, Mt. Irid, Mt. Labo) might have experienced a genetic bottleneck in the recent past. However, if they indeed went through a genetic bottleneck, it is at present

not known what caused this, because all five populations are located in areas with relatively intact forests.

**Genetic Structure**—The results of the genetic structure analyses indicate low genetic connectivity between most populations of the *R. lagascae* complex. All populations have one or more private alleles (Table 2), most pairwise  $F_{ST}$  values and the overall  $F'_{ST}$  value are statistically significant (Table 3), and a substantial proportion of the genetic variation in the complex is found among populations. The results of the STRUCTURE and PCoA analyses show that there are three distinct genetic groups that align with *R. manillana*, the Mt. Labo *R. lagascae* population, and the 11 remaining populations of *R. lagascae* (Figs. 3, 4). These patterns suggest that these three groups are genetically isolated from each other.

The distinctiveness of *R. manillana* as indicated by the microsatellite data used in this study is supported by morphological differences between this taxon and *R. lagascae* (Madulid and Agoo 2008; Madulid et al. 2008; Pelsner et al. 2013; Fig. 2). Except for *R. speciosa* Barcelona and Fernando (2002), which is found on the island of Panay and the adjacent northern part of Negros Island (Barcelona et al. 2009), all Philippine *Rafflesia* species are endemic to individual islands in the archipelago. *Rafflesia manillana* is endemic to Samar Island whereas *R. lagascae* is only known from Luzon Island and their genetic and morphological differences therefore support the hypothesis that the sea straits that separate the Philippine islands form significant barriers to gene flow between *Rafflesia* populations. The genetic isolation of *R. manillana* might be a contributing factor to its lower genetic diversity relative to most other populations from which a similar number of samples was obtained (Table 2).

Also the Mt. Labo *R. lagascae* population is genetically isolated from other populations of the complex and likewise shows relatively low genetic diversity (Table 2). In contrast with *R. manillana*, however, the Mt. Labo population does not appear to be morphologically different from the other *R. lagascae* populations (Fig. 2). Its floral characters (e.g. size, coloration, ornamentation of the diaphragm and perigone lobes) seem to fall within the range of variation observed in *R. lagascae* s. s., but detailed morphometric studies are needed to determine if the Mt. Labo population is indeed morphologically indistinct from *R. lagascae* s. s. Pelsner et al. (2016)



identified *Tetrastigma loheri* Gagnepain (1910) as the host species of Mt. Labo *Rafflesia* plants. This species is the most common host of the *R. lagascae* complex (Pelser et al. 2016) and differences in host preference can therefore not explain the genetic distinctiveness of the Mt. Labo population.

Mt. Labo is located on Bicol Peninsula, which is currently connected to mainland Luzon by a relatively narrow land bridge, and at the southeastern end of the distribution area of *R. lagascae* (Fig. 1). According to Hall (1998, 2002), the Bicol Peninsula was part of a cluster of islands that included Samar and eastern parts of the current Visayas and Mindanao and that has progressively moved towards mainland Luzon over the last 45 my. The Bicol Peninsula connected to southeastern Luzon only ca. 6 mya (Hall 2002). The genetic isolation of the Mt. Labo population can therefore potentially be explained by the geographical isolation of the Bicol Peninsula prior to 6 mya. Molecular dating studies by Bendiksby et al. (2010) suggest that *Rafflesia* was present in the Philippines as early as 5.2–9.3 mya. Thus, it is indeed possible that the dynamic geological history of the Philippines shaped the patterns of genetic structure of *R. lagascae*. The Mt. Malinao population, however, is also located on the Bicol Peninsula (Fig. 1), yet genetically more similar to populations from mainland Luzon than to the Mt. Labo population (Fig. 3). If the previously mentioned geographic hypothesis is correct, then long-distance dispersal of *Rafflesia lagascae* s. s. between mainland Luzon to Mt. Malinao could explain the observed genetic patterns. Zoochory has been proposed as the dispersal method of *Rafflesia* seeds (Teijsmann 1856; Justesen 1922; Kuijt 1969; Emmons et al. 1991; Nais 2001; Bänziger 2004). Although various animals have been considered as dispersal agents, observations by Pelser et al. (2013) suggest seed dispersal by ants. Myrmecochory is potentially plesiomorphic in Rafflesiaceae, because it is also common in Peraceae (Bond and Slingsby 1983; Lengyel et al. 2009, 2010), which form the sister group of the clade composed by Euphorbiaceae and Rafflesiaceae (Davis et al. 2007; Endress et al. 2013). If *Rafflesia* is indeed myrmecochorous, long-distance dispersal is presumably very rare, and this might explain the high island-endemicity of *Rafflesia* in the Philippines. However, other observations and experiments suggest that mammalian frugivores might play a role in endozoochorous seed dispersal (Emmons et al. 1991; Bänziger 2004) and this mode of dispersal might be able to transport *Rafflesia* seeds more frequently over greater distances. Alternatively, the Mt. Malinao area might be a fragment of mainland Luzon whose position has been scrambled by tectonic movement of the Bicol fragment. Although we are not aware of geological evidence that supports this hypothesis, this part of the Philippines clearly has a very complex and dynamic geological history that is presently only poorly known (Hall 2002).

Patterns of genetic structure within *R. lagascae* s. s. are less pronounced than those among *R. lagascae* s. s., Mt. Labo *R. lagascae*, and *R. manillana*, but still indicate low genetic connectivity among most populations (Table 2; Figs. 4, 5). However, particularly some populations in central Luzon (i.e. Burgos, Mt. Irid, Salazar) show admixture between different genetic clusters (Fig. 5) and might therefore have experienced higher levels of recent gene flow than some of the other populations (e.g. Mt. Makiling and Mt. Malinao). Although evidence for isolation by distance in the *R. lagascae* s. s. cluster is not statistically significant, pairwise  $F_{ST}$  values (Table 3) and the results of Bayesian cluster analyses in STRUCTURE (Fig. 5)

suggest stronger genetic connectivity within two groups of nearby populations in central Luzon (i.e. among the AMNP, Maria Aurora, and Mt. Mangan populations and between Burgos and Salazar) than among other populations. This indicates that nearby populations are perhaps less likely to become genetically isolated than those that are further away or that genetic connectivity between populations in central Luzon is higher than in other parts of the distribution area of *R. lagascae*.

**Taxonomic Delimitation of the *R. lagascae* Complex**—The results of our genetic structure analyses inform the taxonomic delimitation of the *R. lagascae* complex. In addition to confirming that *R. manillana* is not only morphologically different from *R. lagascae* (Fig. 2), but also genetically distinct, we also demonstrate that a genetically different but morphologically cryptic population of *R. lagascae* exists on Mt. Labo. If a species concept is applied in which genetic distinctiveness or the absence of interbreeding is considered evidence for recognizing groups of individuals as different species (Coyne and Orr 2004), then the Mt. Labo population should be described as a distinct species. We refrain here from formally naming this species, awaiting the completion of detailed morphological studies in search of characters in which the Mt. Labo plants are different from those of *R. lagascae* s. s.

**Conservation Implications**—The *R. lagascae* complex is known from relatively few and disjunct populations, some of which are only composed of a few host plants. Despite this, our results do not provide evidence of pronounced inbreeding and populations show moderate levels of genetic diversity. This potentially means that the disjunct distribution of the *R. lagascae* complex and the small sizes of some of its populations are a result of natural differences in host presence and abundance among areas and that the *R. lagascae* complex has adapted to this. In other words, the *R. lagascae* complex is possibly naturally rare. It is extremely likely, however, that the number of populations of the *R. lagascae* complex has decreased over the past century and that the geographic distances between them have increased as a result of widespread habitat destruction and degradation in the Philippines (Mittermeier et al. 1998; Ong et al. 2002). Especially in the southern part of its distribution in Luzon, the natural forest ecosystems in which *R. lagascae* is found are confined to small areas separated by vast areas in which forests have been converted to farmland. This has undoubtedly resulted in decreased genetic connectivity between the remaining populations.

Our results show substantial differences in allelic composition and frequencies between populations of the *R. lagascae* complex (Table 2). This means that considerable genetic diversity might be lost if any of its populations would go extinct (Schmidt and Jensen 2000). Small or isolated populations outside of protected areas are most at risk of extinction. These include the populations from Maria Aurora, Mt. Malinao, and Mt. Mangan (Table 2). However, also the larger populations outside of protected areas (Bolos Point, Mt. Irid, and Mt. Labo) are of conservation concern, because they harbor the highest levels of genetic diversity and need to be protected from habitat destruction and degradation to remain centers of genetic diversity.

Because of their pronounced genetic differences and the lack of gene flow between them, *R. lagascae* s. s., Mt. Labo *R. lagascae*, and *R. manillana* should be managed as distinct conservation entities. Mt. Labo *R. lagascae* and *R. manillana* are each only known from a single population, which shows lower

genetic diversity than similar sized populations of *R. lagascae* s. s. (Table 2). Both taxa therefore have a higher risk of losing genetic diversity and of becoming extinct than *R. lagascae* s. s. The habitat of *R. manillana* is protected as part of the Samar Island Natural Park and is relatively intact, but the Mt. Labo area does not enjoy formal protection. The Mt. Labo *Rafflesia* is therefore particularly prone to experiencing a reduction in the size of its single population and should thus be managed as a critically endangered species (IUCN 2012).

If *Rafflesia lagascae* s. s. and the Mt. Labo *Rafflesia* are indeed morphologically cryptic species, then this poses the question of whether additional cryptic species have been overlooked in *Rafflesia*. If so, this could mean that *Rafflesia* species of conservation concern have remained undetected and that species-level biodiversity of *Rafflesia* has been underestimated (e.g. Schönrogge et al. 2002; Bickford et al. 2007; Shepherd et al. 2015). Future studies into species delimitation using genetic tools are therefore needed to be able to better inform *Rafflesia* conservation management.

**ACKNOWLEDGMENTS.** This publication is dedicated to Danilo S. Balete (1960–2017), mammologist and discoverer of three new species of Philippine *Rafflesia*. This project was funded by the Marsden Fund Council from Government funding administered by the Royal Society of New Zealand and by the Linnean Society, Percy Sladen Memorial Fund, and the National Geographic Foundation. We would like to thank the three anonymous reviewers of this manuscript for their valuable comments. We are grateful to the National Museum of the Philippines, the Department of Environment and Natural Resources (DENR) and in particular T. M. S. Lim, Director of the Biodiversity Management Bureau (BMB) and staff of the DENR regional and local offices for facilitating the issuance of collecting, transport, and export permits. Prior Informed Consents were issued by the Protected Areas and Management Boards (PAMB) of Aurora Memorial National Park, Bataan Natural Park (Mt. Natib), Pantabangan-Carranglan Watershed Reserve, Mt. Banahaw-Mt. San Cristobal Protected Area, Samar Island Natural Park, the Mayors of Buhi, Camarines Sur; Gattaran and Lal-o, Cagayan; Gabaldon, Nueva Ecija; Labo and San Lorenzo Ruiz, Camarines Norte; Rodriguez, Rizal, and the Makiling Center for Mountain Ecosystems. We would also like to thank our NGO partners: Cagayan Valley Partners in People Development and the Philippine Native Plants Conservation Society, Inc. For sharing information on distributional ranges and fieldwork assistance, we thank J. Aliposa, D. S. Balete, M. O. Cajano, J. R. Callado, L. L. Co, V. Dacumos, A. Diesmos, N. B. Gapas, J. Sarmiento, and D. Tandang. Numerous field guides/assistants and staff of DENR and LGU deserve our sincerest gratitude for without their help, fieldwork would have not been possible. Finally, M. L. Hale and T. E. Steeves provided helpful feedback on the results of the population genetic analyses and M. Walters helped with preparing figures for this publication.

#### LITERATURE CITED

- Balete, D. S., P. B. Pelser, D. L. Nickrent, and J. F. Barcelona. 2010. *Rafflesia verrucosa* (Rafflesiaceae), a new species of small-flowered *Rafflesia* from eastern Mindanao, Philippines. *Phytotaxa* 10: 49–57.
- Bänziger, H. 2004. Studies on hitherto unknown fruits and seeds of some Rafflesiaceae, and a method to manually pollinate their flowers for research and conservation. *Linzer Biologische Beiträge* 36: 1175–1198.
- Barcelona, J. F. and E. S. Fernando. 2002. A new species of *Rafflesia* (Rafflesiaceae) from Panay Island, Philippines. *Kew Bulletin* 57: 647–651.
- Barcelona, J. F., M. O. Cajano, and A. S. Hadsall. 2006. *Rafflesia baletei*, another new *Rafflesia* (Rafflesiaceae) from the Philippines. *Kew Bulletin* 61: 231–237.
- Barcelona, J. F., P. B. Pelser, A. M. Tagtag, R. G. Dahonog, and A. P. Lilangan. 2008. The rediscovery of *Rafflesia schadenbergiana* (Rafflesiaceae). *Flora Malesiana Bulletin* 14: 162–165.
- Barcelona, J. F., P. B. Pelser, D. S. Balete, and L. L. Co. 2009. Taxonomy, ecology, and conservation status of Philippine *Rafflesia*. *Blumea* 54: 77–93.
- Barcelona, J. F., M. M. E. Manting, R. B. Arbolonio, R. B. Caballero, and P. B. Pelser. 2014. *Rafflesia mixta* (Rafflesiaceae), a new species from Surigao del Norte, Mindanao, Philippines. *Phytotaxa* 174: 272–278.
- Barkman, T. J., S. H. Lim, K. Mat Salleh, and J. Nais. 2004. Mitochondrial DNA sequences reveal the photosynthetic relatives of *Rafflesia*, the world's largest flower. *Proceedings of the National Academy of Sciences USA* 101: 787–792.
- Barkman, T. J., M. Bendiksby, S.-H. Lim, K. M. Salleh, J. Nais, D. Madulid, and T. Schumacher. 2008. Accelerated rates of floral evolution at the upper size limit for flowers. *Current Biology* 18: 1508–1513.
- Beaman, R. S., P. Decker, and J. Beaman. 1988. Pollination of *Rafflesia* (Rafflesiaceae). *American Journal of Botany* 75: 1148–1162.
- Bellot, S. and S. S. Renner. 2013. Pollination and mating systems of Apodanthaceae and the distribution of reproductive traits in parasitic angiosperms. *American Journal of Botany* 100: 1083–1094.
- Bendiksby, M., T. Schumacher, G. Gussarova, J. Nais, K. Mat-Salleh, N. Sofiyanti, D. Madulid, S. A. Smith, and T. Barkman. 2010. Elucidating the evolutionary history of the Southeast Asian, holoparasitic, giant-flowered Rafflesiaceae: Pliocene vicariance, morphological convergence and character displacement. *Molecular Phylogenetics and Evolution* 57: 620–633.
- Besana, G. M. and M. Ando. 2005. The central Philippine Fault Zone: Location of great earthquakes, slow events, and creep activity. *Earth, Planets, and Space* 57: 987–994.
- Bickford, D., D. J. Lohman, N. S. Sodhi, P. K. L. Ng, R. Meier, K. Winker, K. K. Ingram, and I. Das. 2007. Cryptic species as a window on diversity and conservation. *Trends in Ecology & Evolution* 22: 148–155.
- Binks, R. M., M. A. Millar, and M. Byrne. 2015. Not all rare species are the same: Contrasting patterns of genetic diversity and population structure in two narrow-range endemic sedges. *Biological Journal of the Linnean Society. Linnean Society of London* 114: 873–886.
- Blanco, F. M. 1845. *Flora de Filipinas*. Ed. 2. M. Manila: Sanchez.
- Bond, W. J. and P. Slingsby. 1983. Seed dispersal by ants in shrublands of the Cape Province and its evolutionary implications. *South African Journal of Science* 79: 231–233.
- Byers, D. L. and T. R. Meagher. 1992. Mate availability in small populations of plant species with homomorphic sporophytic self-incompatibility. *Heredity* 68: 353–359.
- Cornuet, J. M. and G. Luikart. 1997. Description and power analysis of two tests for detecting recent population bottlenecks from allele frequency data. *Genetics* 144: 2001–2014.
- Costea, M. and S. Stefanović. 2009. *Cuscuta jepsonii* (Convolvulaceae): An invasive weed or an extinct endemic?. *American Journal of Botany* 96: 1744–1750.
- Coyne, J. A. and H. A. Orr. 2004. Speciation: Reality and concepts. Pp. 9–25 in *Speciation*, eds. J. A. Coyne and H. A. Orr. Sunderland, Massachusetts: Sinauer Associates, Inc.
- Davis, C. C. and K. J. Wurdack. 2004. Host-to-parasite gene transfer in flowering plants: Phylogenetic evidence from Malpighiales. *Science* 305: 676–678.
- Davis, C. C., M. Latvis, D. L. Nickrent, K. J. Wurdack, and D. A. Baum. 2007. Floral gigantism in Rafflesiaceae. *Science* 315: 1812.
- de Lange, P. J. 2003. *Pittosporum serpentinum* (de Lange) de Lange (Pittosporaceae), a new species combination for an ultramafic endemic from North Cape, New Zealand. *New Zealand Journal of Botany* 41: 725–726.
- Earl, D. A. and B. M. von Holdt. 2012. STRUCTURE HARVESTER: A website and program for visualizing STRUCTURE output and implementing the Evanno method. *Conservation Genetics Resources* 4: 359–361.
- Ellstrand, N. C. and D. R. Elam. 1993. Population genetic consequences of small population size: Implications for plant conservation. *Annual Review of Ecology and Systematics* 24: 217–242.
- Emmons, L. H., J. Nais, and A. Briun. 1991. The fruit and consumers of *Rafflesia keithii* (Rafflesiaceae). *Biotropica* 23: 197–199.
- Endress, P. K., C. C. Davis, and M. L. Matthews. 2013. Advances in the floral structural characterization of the major subclades of Malpighiales, one of the largest orders of flowering plants. *Annals of Botany* 111: 969–985.
- Evanno, G., S. Regnaut, and J. Goudet. 2005. Detecting the number of clusters of individuals using the software structure: a simulation study. *Molecular Ecology* 14: 2611–2620.
- Faircloth, B. C. 2008. Msatcommander: Detection of microsatellite repeat arrays and automated, locus-specific primer design. *Molecular Ecology Resources* 8: 92–94.
- Falush, D., M. Stephens, and J. K. Pritchard. 2003. Inference of population structure: Extensions to linked loci and correlated allele frequencies. *Genetics* 164: 1567–1587.

- Falush, D., M. Stephens, and J. K. Pritchard. 2007. Inference of population structure using multilocus genotype data: Dominant markers and null alleles. *Molecular Ecology Notes* 7: 574–578.
- Gagnepain, F. 1910. *Tetrastigma* (Ampelidacées) nouveaux ou peu connus. *Notululae Systematicae* 1: 261–271.
- Galindon, J. M. M., P. S. Ong, and E. S. Fernando. 2016. *Rafflesia consueloae* (Rafflesiaceae), the smallest among giants: A new species from Luzon Island, Philippines. *PhytoKeys* 16: 37–46.
- Hall, R. 1998. The plate tectonics of Cenozoic SE Asia and the distribution of land and sea. Pp. 99–131 in *Biogeography and Geological Evolution of SE Asia*, eds. R. Hall and J. D. Holloway. Leiden: Backhuys Publishers.
- Hall, R. 2002. Cenozoic geological and plate tectonic evolution of SE Asia and the SW Pacific: Computer-based reconstructions, model and animations. *Journal of Asian Earth Sciences* 20: 353–431.
- Hidayati, S. N. and J. L. Walck. 2016. A review of the biology of *Rafflesia*: What do we know and what's next? *Buletin Kebun Raya* 19: 67–78.
- Hieronimus, G. 1885. Ueber eine neue, von Dr. A. Schadenberg und O. Koch auf Süd-Mindanao entdeckte Art der Gattung *Rafflesia*. *Gartenflora* 34: 3–7.
- IUCN. 2012. IUCN red list categories and criteria: version 3.1. Ed. 2. Gland, Switzerland and Cambridge, U. K.: IUCN.
- Josephson, J. 2000. Going, going, gone? Plant species extinction in the 21st Century. *Environmental Science & Technology* 34: 130A–135A.
- Justesen, P. T. 1922. Morphological and biological notes on *Rafflesia* flowers observed in the highlands of mid-Sumatra. *Annales du Jardin Botanique de Buitenzorg* 32: 64–87.
- Kopelman, N. M., J. Mayzel, M. Jakobsson, N. A. Rosenberg, and I. Mayrose. 2015. CLUMPAK: A program for identifying clustering modes and packaging population structure inferences across K. *Molecular Ecology Resources* 15: 1179–1191.
- Kuijt, J. 1969. *The biology of parasitic flowering plants*. Berkeley and Los Angeles: University of California Press.
- Laurance, W. F., D. Carolina Useche, L. P. Shoo, S. K. Herzog, M. Kessler, F. Escobar, G. Brehm, J. C. Axmacher, I. C. Chen, L. A. Gámez, P. Hietz, K. Fiedler, T. Pyrcz, J. Wolf, C. L. Merkord, C. Cardelus, A. R. Marshall, C. Ah-Peng, G. H. Aplet, M. del Coro Arizmendi, W. J. Baker, J. Barone, C. A. Brühl, R. W. Bussmann, D. Cicuzza, G. Eilu, M. E. Favila, A. Hemp, C. Hemp, J. Homeier, J. Hurtado, J. Jankowski, G. Kattán, J. Kluge, T. Krömer, D. C. Lees, M. Lehnert, J. T. Longino, J. Lovett, P. H. Martin, B. D. Patterson, R. G. Pearson, K. S. H. Peh, B. Richardson, M. Richardson, M. J. Samways, F. Senbeta, T. B. Smith, T. M. A. Utteridge, J. E. Watkins, R. Wilson, S. E. Williams, and C. D. Thomas. 2011. Global warming, elevational ranges and the vulnerability of tropical biota. *Biological Conservation* 144: 548–557.
- Lengyel, S., A. D. Gove, A. M. Latimer, J. D. Majer, and R. R. Dunn. 2009. Ants sow the seeds of global diversification in flowering plants. *PLoS One* 4: e5480.
- Lengyel, S., A. D. Gove, A. M. Latimer, J. D. Majer, and R. R. Dunn. 2010. Convergent evolution of seed dispersal by ants, and phylogeny and biogeography in flowering plants: A global survey. *Perspectives in Plant Ecology, Evolution and Systematics* 12: 43–55.
- Madulid, D. A. and E. M. G. Ago. 2008. (2007). On the identity of *Rafflesia manillana* Teschem. (Rafflesiaceae). *Philippine Scientist* 44: 57–70.
- Madulid, D. A., I. E. Buot, and E. M. G. Ago. 2008. (2007). *Rafflesia panchoana* (Rafflesiaceae), a new species from Luzon island, Philippines. *Acta Manilana* 55: 43–47.
- Marvier, M. A. and D. L. Smith. 1997. Conservation implications of host use for rare parasitic plants. *Conservation Biology* 11: 839–848.
- Medrano, M. and C. M. Herrera. 2008. Geographical structuring of genetic diversity across the whole distribution range of *Narcissus longispathus*, a habitat-specialist, Mediterranean narrow endemic. *Annals of Botany* 102: 183–194.
- Mittermeier, R. A., N. Myers, J. B. Thomsen, G. A. Da Fonseca, and S. Olivieri. 1998. Biodiversity hotspots and major tropical wilderness areas: Approaches to setting conservation priorities. *Conservation Biology* 12: 516–520.
- Meijer, W. 1997. Rafflesiaceae. *Flora Malesiana Ser. I* 13: 1–42.
- Molina, J. E., K. M. Hazzouri, D. L. Nickrent, M. Geisler, R. S. Meyer, M. M. Pentony, J. M. Flowers, P. B. Pelser, J. F. Barcelona, S. A. Inovejas, I. Uy, W. Yuan, O. Wilkins, C.-I. Michel, S. Locklear, G. P. Concepcion, and M. D. Purugganan. 2014. Possible loss of the chloroplast genome in the parasitic flowering plant *Rafflesia lagascae* (Rafflesiaceae). *Molecular Biology and Evolution* 31: 793–803.
- Nais, J. 2001. *Rafflesia* of the world. Kota Kinabalu: Sabah Parks.
- Narum, S. R. 2006. Beyond Bonferroni: Less conservative analyses for conservation genetics. *Conservation Genetics* 7: 783–787.
- Nickrent, D. L., A. Blarer, Y.-L. Qiu, R. Vidal-Russell, and F. Anderson. 2004. Phylogenetic inference in Rafflesiales: The influence of rate heterogeneity and horizontal gene transfer. *BMC Evolutionary Biology* 4: 40.
- Nikolov, L. A., P. Endress, M. Sugumaran, S. Sasirat, S. Vessabutr, E. M. Kramer, and C. C. Davis. 2013. Developmental origins of the world's largest flowers, Rafflesiaceae. *Proceedings of the National Academy of Sciences USA* 110: 18578–18583.
- Nyblom, H. 2004. Comparison of different nuclear DNA markers for estimating intraspecific genetic diversity in plants. *Molecular Ecology* 13: 1143–1155.
- Olah, L. 1960. Cytological and morphological investigations in *Rafflesia arnoldi* R.Br. *Bulletin of the Torrey Botanical Club* 87: 406–416.
- Ong, P. S., L. E. Afuang, and R. Rosell-Ambal. 2002. *Philippine biodiversity conservation priorities: a second iteration of the national biodiversity strategy and action plan*. Quezon City Philippines: DENR-Protected Areas and Wildlife Bureau, CI-Philippines, UP CIDS and FPE.
- Peakall, R. and P. E. Smouse. 2012. GenAlEx 6.5: Genetic analysis in Excel. Population genetic software for teaching and research—An update. *Bioinformatics* 28: 2537–2539.
- Pelser, P. B., J. F. Barcelona, and D. L. Nickrent (eds.). 2011. onwards. Co's Digital Flora of the Philippines. [www.philippineplants.org](http://www.philippineplants.org).
- Pelser, P. B., D. L. Nickrent, and J. F. Barcelona. 2016. Untangling a vine and its parasite: Host specificity of Philippine *Rafflesia* (Rafflesiaceae). *Taxon* 65: 739–758.
- Pelser, P. B., D. L. Nickrent, J. R. C. Callado, and J. F. Barcelona. 2013. Mt. Banahaw reveals: The resurrection and neotypification of the name *Rafflesia lagascae* (Rafflesiaceae) and clues to the dispersal of *Rafflesia* seeds. *Phytotaxa* 131: 35–40.
- Pritchard, J. K., M. Stephens, and P. Donnelly. 2000. Inference of population structure using multilocus genotype data. *Genetics* 155: 945–959.
- Ramamoorthy, R., E. E.-K. Phua, S.-H. Lim, H. T.-W. Tan, and P. P. Kumar. 2013. Identification and characterization of *RcMADS1*, an AGL24 ortholog from the holoparasitic plant *Rafflesia cantleyi* Solms-Laubach (Rafflesiaceae). *PLoS One* 8: e67243.
- Raymond, M. and F. Rousset. 1995. GENEPOP (version 1.2): Population genetics software for exact tests and ecumenicism. *The Journal of Heredity* 86: 248–249.
- Renner, S. and J. Feil. 1993. Pollinators of tropical dioecious angiosperms. *American Journal of Botany* 80: 1100–1107.
- Renner, S. and R. E. Ricklefs. 1995. Dioecy and its correlates in the flowering plants. *American Journal of Botany* 82: 596–606.
- Rozen, S. and H. Skaletsky. 1999. Primer3 on the WWW for general users and for biologist programmers. Pp. 365–386 in *Methods in molecular biology* 132: *Bioinformatics methods and protocols*, eds. S. Misener and S. A. Krawetz. Totowa, New Jersey: Humana Press.
- Sandner, T. M. and D. Matthies. 2017. Interactions of inbreeding and stress by poor host quality in a root hemiparasite. *Annals of Botany* 119: 143–150.
- Schmidt, K. and K. Jensen. 2000. Genetic structure and AFLP variation of remnant populations in the rare plant *Pedicularis palustris* (Scrophulariaceae) and its relation to population size and reproductive components. *American Journal of Botany* 87: 678–689.
- Schönrogge, K., B. Barr, J. C. Wardlaw, E. Napper, M. G. Gardner, J. Breen, G. W. Elmes, and J. A. Thomas. 2002. When rare species become endangered: Cryptic speciation in myrmecophilous hoverflies. *Biological Journal of the Linnean Society. Linnean Society of London* 75: 291–300.
- Shepherd, K. A., K. R. Thiele, J. Sampson, D. Coates, and M. Byrne. 2015. A rare, new species of *Atriplex* (Chenopodiaceae) comprising two genetically distinct but morphologically cryptic populations in arid Western Australia: implications for taxonomy and conservation. *Australian Systematic Botany* 28: 234–245.
- Stanton, S., O. Honnay, H. Jacquemyn, and I. Roldán-Ruiz. 2009. A comparison of the population genetic structure of parasitic *Viscum album* from two landscapes differing in degree of fragmentation. *Plant Systematics and Evolution* 281: 161–169.
- Teijsmann, J. E. 1856. Nadere bijdrage tot de kennis van de voortteling van *Rafflesia arnoldii* R.Br. in 's Lands Plantentuin te Buitenzorg. *Natuurkundig Tijdschrift voor Nederlands Indië* 12: 277–281.
- Teschemacher, J. E. 1844. On a new species of *Rafflesia* from Manilla. *Boston Journal of Natural History* 4: 63–66.
- Thiers, B. 2017. [continuously updated]. Index Herbariorum: a global directory of public herbaria and associated staff. New York Botanical Garden's Virtual Herbarium. <http://sweetgum.nybg.org/science/ih/>.

- Van Oosterhout, C., W. F. Hutchinson, D. P. M. Wills, and P. Shipley. 2004. Micro-checker: Software for identifying and correcting genotyping errors in microsatellite data. *Molecular Ecology Notes* 4: 535–538.
- Wicaksono, A., S. Mursidawati, L. A. Sukanto, and J. A. Teixeira da Silva. 2016. *Rafflesia* spp.: Propagation and conservation. *Planta* 244: 289–296.
- Williams, E. W., R. Cheung, C. Siegel, M. Howards, J. Fant, and K. Havens. 2016. Persistence of the gypsophile *Lepidospartum burgessii* (Asteraceae) through clonal growth and limited gene flow. *Conservation Genetics* 17: 1201–1211.
- Xi, Z., R. Bradley, K. Wurdack, K. M. Wong, M. Sugumaran, K. Bomblies, J. Rest, and C. C. Davis. 2012. Horizontal transfer of expressed genes in a parasitic flowering plant. *BMC Genomics* 13: 227.
- Xi, Z., Y. Wang, R. K. Bradley, M. Sugumaran, C. J. Marx, J. S. Rest, and C. C. Davis. 2013. Massive mitochondrial gene transfer in a parasitic flowering plant clade. *PLOS Genetics* 9: e1003265.
- APPENDIX 1. Voucher information. Herbarium acronyms follow Thiers (2017).
- R. lagascae***: Aurora Memorial Natural Park, Aurora Prov., J.R. Callado 382 (CANU, PNH); Bolos Point, Cagayan Prov., J.F. Barcelona 3600 with J. Payba, R. Echanique & Tabuc (CAHUP, SIU); Burgos, Nueva Ecija Prov., J.F. Barcelona 4081 (PNH); Maria Aurora, Aurora Prov., J.F. Barcelona 4033 (PNH); Mt. Banahaw, Quezon Prov., J.F. Barcelona 3819 with P.B. Pelser (CANU); Mt. Irid, Quezon Prov., J.F. Barcelona 3657 with Joel Sarmiento (CAHUP, SIU); Mt. Labo. Camarines Norte/Camarines Sur Prov., J.F. Barcelona 3849 with P.B. Pelser (CANU, PNH); Mt. Makiling, Laguna Prov., J.F. Barcelona 3648 with D.L. Nickrent, E. Malinao & R. Breva (CAHUP, SIU); Mt. Malinao, Camarines Sur Prov., J.F. Barcelona 4046 (CANU); Mt. Mingan, Aurora Prov., J.F. Barcelona 3867 with P.B. Pelser (PNH); Mt. Natib, Bataan Prov., J.F. Barcelona 3563 with L.L. Co (CAHUP, SIU); Salazar, Nueva Ecija Prov., J.F. Barcelona 4055 (PNH). ***R. manillana***: Basey, Samar Prov., J.F. Barcelona 3734 et al. (CANU, PNH).