



## **Diet of the Ashy Red Colobus (*Piliocolobus tephrosceles*) and Crop-Raiding in a Forest-Farm Mosaic, Mbuzi, Rukwa Region, Tanzania**

Author: Kibaja, Mohamed

Source: Primate Conservation, 2014(28) : 109-116

Published By: Conservation International

URL: <https://doi.org/10.1896/052.028.0108>

---

BioOne Complete ([complete.BioOne.org](https://complete.BioOne.org)) is a full-text database of 200 subscribed and open-access titles in the biological, ecological, and environmental sciences published by nonprofit societies, associations, museums, institutions, and presses.

Your use of this PDF, the BioOne Complete website, and all posted and associated content indicates your acceptance of BioOne's Terms of Use, available at [www.bioone.org/terms-of-use](https://www.bioone.org/terms-of-use).

Usage of BioOne Complete content is strictly limited to personal, educational, and non - commercial use. Commercial inquiries or rights and permissions requests should be directed to the individual publisher as copyright holder.

---

BioOne sees sustainable scholarly publishing as an inherently collaborative enterprise connecting authors, nonprofit publishers, academic institutions, research libraries, and research funders in the common goal of maximizing access to critical research.

# Diet of the Ashy Red Colobus (*Piliocolobus tephrosceles*) and Crop-Raiding in a Forest-Farm Mosaic, Mbuli, Rukwa Region, Tanzania

Mohamed Kibaja

Department of Zoology and Wildlife Conservation, University of Dar es Salaam, Dar es Salaam, Tanzania,  
and Centre for Ecological and Evolutionary Synthesis (CEES), Department of Biosciences, University of Oslo, Oslo, Norway

**Abstract:** The Ashy red colobus monkey (*Piliocolobus tephrosceles*) was recently discovered in the Mbuli Forest. Since then its forests have been degraded, fragmented and converted into farmland. In this study I documented the diet, including cultivated crops, of four groups in the Mbuli forest-farm mosaic during two months in the crop-growing season, July–August 2011. Each group was followed for nine days; 36 days overall. It was not possible to extend the study in subsequent years because the forest was so fragmented that the monkeys were no longer staying in some patches. The monkeys fed mostly on wild plants. Crop-raiding was limited to beans, and occurred in the evenings when the farmers had left the fields. Extreme fragmentation, degradation and widespread forest conversion into farmland have drastically reduced the abundance of food trees; and it is likely that this has resulted in their crop-raiding. They are persecuted for this behavior, and retaliatory killing by farmers is probably contributing to their decline in the Mbuli Forest. The conservation of intact montane forests on the Ufipa Plateau is crucial and urgent. Measures must include conservation education, community involvement and improved law enforcement, as well as provisions for local communities to reduce the destruction of the remaining forest patches.

**Key Words:** Ashy red colobus, *Piliocolobus tephrosceles*, *Procolobus rufomitratus tephrosceles*, diet, bean-crop raiding, Mbuli Forest

## Introduction

Folivorous monkeys such as the Ashy red colobus, *Piliocolobus tephrosceles* (Elliot, 1907)<sup>1</sup>, select the most nutritive and easily digestible items, rich in proteins, such as young leaves and leaf buds (Chapman and Chapman 2002). They also eat other plant parts and arthropods to supplement their diet. Seasonal food-switching is common among primates as a strategy to meet their dietary requirements (Li *et al.* 2010). Differences in habitat quality also affect habitat use by primates; for instance, *P. tephrosceles* spends more time in patches with a high density and diversity of food trees than patches with a low food tree density and diversity (Kibaja 2012). The carrying capacity of their habitats is compromised if it is unscrupulously degraded by human activities.

*Piliocolobus tephrosceles* is categorized as ‘Endangered’ on the IUCN Red List (Struhsaker 2008), the only viable population possibly being in Kibale, with at least

17,000 individuals (Struhsaker 2005). There has, however, been a decline in population and group sizes in past years (Chapman *et al.* 2007) due to, among other factors, predation by chimpanzees (*Pan troglodytes*) (Watts and Mitani 2002; Fourier *et al.* 2008; Struhsaker, 2008). On the Ufipa Plateau (Mbizi and Mbuli forests) where there are no chimpanzees the monkeys are prone to extinction due to other forces. The human activities degrading and insularizing the forest have been reported by Davenport *et al.* (2007); and they continue to worsen in the Mbuli Forest, which is gradually being converted into farmland. Such habitat alterations have negative effects on the diet and feeding patterns of the monkeys. Human-grown foods also affect the monkey’s dietary preferences. Tesfaye *et al.* (2013) noted that Boutourlini’s blue monkeys (*Cercopithecus mitis boutourlinii*) raided crops of farms surrounding forest fragments but not those adjoining larger intact forests. While some primates, notably frugivores, can in some circumstances co-exist with humans, folivorous

<sup>1</sup> Following Groves (2007). Classified as *Procolobus rufomitratus tephrosceles* in the IUCN Red List (Struhsaker 2008, 2010).

monkeys have more difficulty. Assessment of the monkeys' diets in these vulnerable habitats and surrounding agro-ecosystems is paramount.

Here I present my preliminary findings on the wild and cultivated foods eaten by Ashy red colobus monkeys in extremely degraded habitats. The results are a wake-up call for primatologists and conservationists to forestall the likely impacts of human activities to habitats of isolated vulnerable populations of primates in unprotected areas such as the Mbuzi Forest.

## Methods

### Study site

The study was conducted in the Mbuzi Forest in the Rukwa Region, Tanzania (Fig. 1). The forest is on the eastern ridge of the Ufipa Plateau in Nkasi District, northeast of Chala and 54 km northwest of Mbizi Forest (Davenport *et al.* 2007). The Ufipa Plateau covers an area of 7,249.4 km<sup>2</sup>. It is an uplifted highland lying between the wings of the Albertine rift valley, east of Lake Tanganyika, and the Rukwa valley. The soils are ferrallitic. Elevations range from 1,000 to 2,661 m above sea level, and annual rainfall is 800–1,200 mm. The plateau is an important agro-economic zone, supplying the marketed surplus of agricultural produce of the region (Anonymous 1998). The high population growth and concentration of people in the area have intensified land-use (Anonymous 1998).

The Mbizi Forest is protected as a forest reserve, but the Mbuzi Forest is not. The Mbuzi Forest is threatened with degradation, resulting from various forms of uncontrolled forest use (Davenport *et al.* 2007). It lies between 1,990 and 2,122 m above sea level and, according to Davenport *et al.*

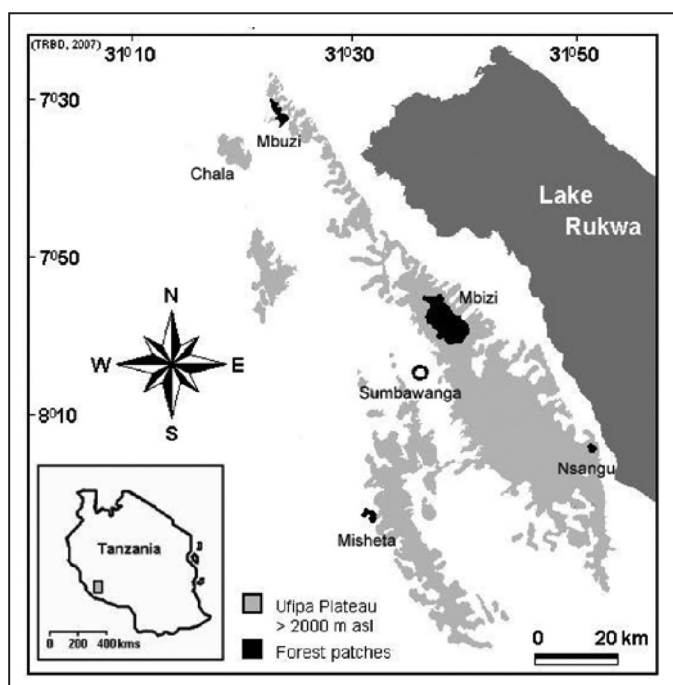
(2007), the forest covers about 611 ha. The area is now probably considerably smaller due to ongoing fragmentation and conversion into cultivated land in recent years.

The Mbuzi Forest has been segmented into several forest patches. In this study, a forest fragment refers to a forest patch that has been broken from the once continuous area of the forest as a result of clearing for cultivation. I surveyed all fragments and only four were occupied by red colobus, each having a single group (G1, G2, G3 and G4): A (7°30'57.85097"S, 31°22'46.53323"E), B (7°30'30.76018"S, 31°22'42.39630"E), C (7°30'9.33958"S, 31°22'35.32957"E), and D (7°30'43.99333"S, 31°23'24.51921"E) (Fig. 2).

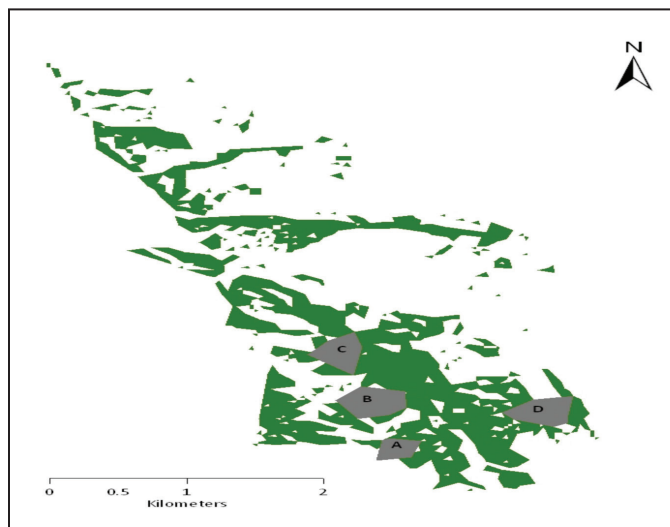
### Feeding data collection and analysis

Each of the four groups was followed for nine days, making a total of 36 days for the four groups inhabiting Mbuzi Forest (Fig. 2). The study was conducted during the crop-growing season from July to August 2011. It was not possible to extend the study in other years because the forest was so fragmented that the monkeys were fleeing some forest patches. I recorded the activities of the groups when following them, using an instantaneous scan sampling protocol (Altmann 1974), recording activities during five-minute scans at 15-minute intervals (Martin and Bateson 1993; Kitegile 2006). In each scan sample, I noted the activities of all visible monkeys. If feeding, the food item, plant part and plant species were identified. After each scan, I recorded my location with a Global Positioning System (GPS), and noted also the habitat type, time spent in a habitat, group size and weather conditions.

To estimate the relative importance of each habitat type, I summed the total feeding records (the sum of all the daily feeding records) for each food item in each. The Chi-square test was used to test the significance of variation in frequency of feeding records for the seeds of cultivated beans and items from wild species eaten in farms, and of feeding records of wild food items between forests and farms.



**Figure 1.** Mbuzi Forest on the Ufipa Plateau, Rukwa Region. From Davenport *et al.* (2007).



**Figure 2.** Locations of the four colobus groups in the forest fragments A–D, as shown by shaded polygons, in Mbuzi Forest, Tanzania.

**Table 1.** Frequency of parts eaten by four groups (G1–G4) of *Piliocolobus tephrosceles* in forest fragments (A–D) in a forest-farm mosaic, Mbuzi, Tanzania.

	Food items	Groups (forest fragments)				
		G1(A)	G2(B)	G3(C)	G4(D)	Total
Wild plant foods	Leaves	256	526	555	513	1850
	Leaf buds	199	94	63	18	374
	Bark	4	1	1	34	40
	Shoots	1	4	8	0	13
	Petioles & cork	0	0	8	5	13
	Dry twigs	0	0	0	12	12
	Flowers & fruits	2	0	1	0	3
	Lichens	0	2	33	39	74
Bean	Seeds	36	2	0	0	38
	<b>Total</b>	498	629	669	621	2417

### Botanical data collection and analyses

I sampled the vegetation in the forest patches habitually used by the Ashy red colobus monkeys. Reconnaissance surveys revealed that the monkeys in the Mbuzi Forest feed on a variety of plants, including trees, shrubs, and lianas, and sometimes even herbs on the ground. The botanical data for trees are considered here for the computation of food selection ratios. Vegetation sampling involved two random plots in each habitat type (open canopy, closed canopy forest and forest edge) in each of the four forest fragments, totaling 22 plots in the forest fragments and 8 plots in the farms. Sampling involved the following quadrat dimensions with modification from Mligo *et al.* (2009) (a) 25 × 20 m quadrats for trees; covering 1.1 ha (22 plots) in the forests and 0.4 ha (8 plots) in the farms (b) 5 × 2 m quadrats nested in the bigger quadrat for shrubs and (c) 1 × 1 m quadrat nested in the 5 × 2 m quadrats for the herbaceous layer (i.e. forbs, seedlings and grasses). The following were recorded in each quadrat: scientific name of the plant, the girth of the trees at breast height, or above the buttress if large fig trees (*Ficus*), using a tape measure, and an estimate of cover for herbs in 1 × 1 m plots.

Tree density was determined by recording the number of trees in a known area and dividing it by the area from which they were sampled, later converted into number of trees per hectare: Density of species (D) = number of trees of each species / total area sampled (ha). The basal area was calculated by using the formula:  $BA = \pi (DBH / 2)^2$ , where BA = basal area,  $\pi = 3.14$ ; and DBH = diameter of a tree at breast height. The basal area was used to compute the selection ratios of food trees in the forests and farms. The formula used was as follows:  $SR = \%f_n / \%BA_n$ , where SR = selection ratio of a food tree species n;  $\%f_n$  = percentage of tree feeding records of species n in the study period;  $\%BA_n$  = percentage basal area (BA) for tree species n in a given habitat. Unpaired two-sample t test (computed in PAST: Paleontological Statistics Version 2.17 Software by Hammer 2012) was used to test the significance of the differences in density and basal area of trees in the diet between forests and farms.

**Table 2.** Feeding records of plant food items in forests and farms, Mbuzi, Tanzania.

Food items	Forests		Farms		Total frequency
	F	%F	F	%F	
Leaves	1801	77.7	49	49.5	1,850
Leaf buds	368	15.9	6	6.1	374
Bark	40	1.7	0	0	40
<b>Bean seeds</b>	-	-	<b>38</b>	<b>38.4</b>	<b>38</b>
Shoots	12	0.5	1	1.0	13
Petioles and cork	13	0.5	-	-	13
Dry twigs	7	0.3	5	5.1	12
Flowers and fruits	3	0.1	-	-	3
Lichens	74	3.2	-	-	74
<b>Total</b>	<b>2318</b>	<b>100</b>	<b>99</b>	<b>100</b>	<b>2,417</b>

### Results

Of 2,417 feeding records, 2,379 (98.4%) were of wild foods. Cultivated bean seeds amounted to 38 records (1.6%) in the forest-farm mosaic. Consumption of wild food items was higher in forests (97.4%,  $n = 2318$ ) than in farms (2.6%;  $n = 61$ ). In the farms, the monkeys ate more wild food items (61.6%,  $n = 61$ ) than cultivated bean seeds (38.4%  $n = 38$ ) ( $\chi^2 = 5.343$ ,  $df = 1$ ;  $P = 0.021$ ). The percentage frequency of feeding records between wild plant items (not cultivated beans) and bean seeds differed significantly among the monkey groups G1–G4 (Contingency table:  $\chi^2 = 129.970$ ;  $P < 0.0001$ ). Only groups G1 and G2 ate bean seeds (Table 1).

Leaves comprised the majority of the diet in both forests and farms (Table 2). Among the cultivated crops, only beans (*Phaseolus*) were eaten, complementing the wild plant foods. The monkeys ate fresh beans (seeds) and discarded the pods. They would raid the bean crops in the early morning and (mostly) late evenings at around 1700 h–1900 h (Fig. 3) when peasant farmers were not around. Whereas, the farmers guarded the bean plantations, farms with other crops were

**Table 3.** Feeding records of food plants in the forest fragments and fields, Mbuzi, Tanzania.

Family	Food plant	Author(s)	Forests		Farms		Parts eaten
			F	%F	F	%F	
Chrysobalanaceae	<sup>a</sup> <i>Parinari excelsa</i>	Sabine	990	44.0	43	43.9	YL, LB
Mimosaceae	<sup>a</sup> <i>Newtonia buchananii</i>	Baker	335	14.9	6	6.1	YL, LB
Moraceae	<sup>a</sup> <i>Ficus thonningii</i>	Blume	299	13.3			YL, LB
Celastraceae	<sup>a</sup> <i>Catha edulis</i>	(Vahl) Forssk ex Endl	2	0.1			B
Sapotaceae	<sup>a</sup> <i>Chrysophyllum gorungosanum</i>	Engl.	204	9.1			YL, LB
Convolvulaceae	<sup>c</sup> <i>Ipomea ficifolia</i>	Lindl.	68	3.0	1	1.0	YL, LS
Mimosaceae	<sup>a</sup> <i>Albizia gummifera</i>	A. Sm	55	2.4			YL, LS
<b>Fabaceae</b>	<sup>c</sup> <i>Phaseolus sp.</i>	<b>(Herb. Linn)</b>	<b>0</b>	<b>0.0</b>	<b>39</b>	<b>39.8</b>	<b>SD</b>
Myrsinaceae	<sup>a</sup> <i>Rapanea melanophloeos</i>	(L.) Mez	34	1.5			B
Myrtaceae	<sup>a</sup> <i>Syzygium guineense</i>	Wall	34	1.5			YL
Parmeliaceae	<sup>c</sup> <i>Parmotrema sp.</i>		27	1.2			
Euphorbiaceae	<sup>a</sup> <i>Croton megalocarpus</i>	Del.	24	1.1			YL, B
Moraceae	<sup>a</sup> <i>Ficus natalensis</i>	Hochst.	22	1.0			LB
Araliaceae	<sup>a</sup> <i>Polyscias fulva</i>	(Hiern) Harms	19	0.8			LS, ML
Ebenaceae	<sup>a</sup> <i>Euclea divinorum</i>	(Hiern)	18	0.8			B, YL
Compositae	<sup>c</sup> <i>Crassocephalum vitellinum</i>	(Benth.) S. Moore	18	0.8			YL
Acanthaceae	<sup>c</sup> <i>Brillantaisia owariensis</i>	(P. Beauv)	12	0.5			YL
Araliaceae	<sup>a</sup> <i>Schefflera goetzenii</i>	(Harms)	11	0.5			LB
Boraginaceae	<sup>a</sup> <i>Ehretia amoena</i>	Klotzsch	11	0.5			YL
Agavaceae	<sup>a</sup> <i>Dracaena steudneri</i>	(Schweinf. ex Engl.)	3	0.1	7	7.1	L, YS
Cucurbitaceae	<sup>c</sup> <i>Momordica foetida</i>	Schumacher	9	0.4	1	1.0	YL
Parmeliaceae	<sup>c</sup> <i>Usnea sp.</i>		9	0.4			
Melanthaceae	<sup>a</sup> <i>Bersama abyssinica</i>	Fresen.	5	0.2			YL
Solanaceae	<sup>c</sup> <i>Solanum terminale</i>	Forssk.	5	0.2			YL
Rubiaceae	<sup>a</sup> <i>Tarenna graveolens</i>	(S.moore) Bremek	4	0.2			B, YL
Compositae	<sup>b</sup> <i>Vernonia amygdalina</i>	Del.	4	0.2			YL
	<sup>d</sup> Unidentified liana		4	0.2			L
Rubiaceae	<sup>a</sup> <i>Psychotria goetzei</i>	(K. Schum)	3	0.1			LB
Stilbaceae	<sup>a</sup> <i>Nuxia congesta</i>	R. Br. Ex Fresen	3	0.1			FR, Fl
Proteaceae	<sup>a</sup> <i>Faurea saligna</i>	Harv.	3	0.1			B
Anacardiaceae	<sup>b</sup> <i>Rhus natalensis</i>	Bemh. Ex Krauss	2	0.1			YL
Phytolaccaceae	<sup>b</sup> <i>Phytolacca dodecandra</i>	Vitten	2	0.1			YL, LB
Cacastaceae	<sup>a</sup> <i>Elaeodendron buchananii</i>	(Loes.) Loes.	2	0.1			YL
Meliaceae	<sup>a</sup> <i>Lepidotrichilia volkensii</i>	(Gürke) Leroy	2	0.1			YL
	<sup>c</sup> Unidentified herb		2	0.1			L
Myrsinaceae	<sup>a</sup> <i>Maesa lanceolata</i>	Forssk	1	0.04			YL
Rubiaceae	<sup>a</sup> <i>Hallea rubrostipulata</i>	(Schumann) Havil	1	0.04			YL
Rutaceae	<sup>a</sup> <i>Clausena anisata</i>	(Wild.) Hook.f.ex Benth	1	0.04			YL
Icacinaeae	<sup>a</sup> <i>Apodytes dimidiata</i>	C. A. Sm.	1	0.04			YL
Mimosaceae	<sup>a</sup> <i>Acacia tortilis</i>	Del.			1	1.0	YL
	Unidentified parasitic plant		1	0.04			

YL = Young leaves; ML= Mature leaves; LB= Leaf buds; LS= Leaf stalks; YS = Young shoots; L = Leaves; FR = Fruits; Fl = Flowers; SD = Seeds; B = Barks; F = Feeding records, %F = % feeding. Superscript a = tree; b = shrub; c = herb; d = liana; e = lichen.

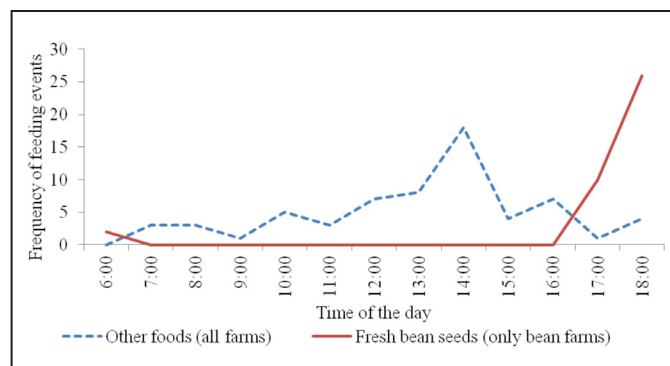
**Table 4.** Overall selection ratios for trees in the forest and farms in Mbuzi, Tanzania.

Food plant	Forests				Farms			
	F	%F	%BA	SR	F	%F	%BA	SR
<i>Parinari excelsa</i>	990	47.5	45.5	1.0	43	75.4	45.1	1.7
<i>Newtonia buchananii</i>	335	16.1	9.5	1.7	6	10.5	6.8	1.5
<i>Ficus thonningii</i>	299	14.3	1.4	10.2				
<i>Catha edulis</i>	2	0.1	1.4	0.1				
<i>Chrysophyllum gorungosanum</i>	204	9.8	5.3	1.8				
<i>Albizia gummifera</i>	55	2.6	0.8	3.3				
<i>Rapanea melanophloeos</i>	34	1.6	2.3	0.7				
<i>Syzygium guineense</i>	34	1.6	5.2	0.3				
<i>Croton megalocarpus</i>	24	1.2	13.4	0.1				
<i>Ficus natalensis</i>	22	1.1	0.2	5.3				
<i>Polyscias fulva</i>	19	0.9						
<i>Euclea divinorum</i>	18	0.9	0.9	1.0				
<i>Schefflera goetzenii</i>	11	0.5						
<i>Ehretia amoena</i>	11	0.5	2.6	0.2				
<i>Dracaena steudneri</i>	3	0.1	0.3	0.5	7	12.3	4.3	2.9
<i>Bersama abyssinica</i>	5	0.2	3.5	0.1				
<i>Tarenna graveolens</i>	4	0.2						
<i>Psychotria goetzei</i>	3	0.1	2.3	0.1				
<i>Nuxia congesta</i>	3	0.1	3.5	0.0				
<i>Faurea saligna</i>	3	0.1	0.1	1.4				
<i>Elaeodendron buchananii</i>	2	0.1						
<i>Lepidotrichilia volkensii</i>	2	0.1	0.2	0.5				
<i>Maesa lanceolata</i>	1	0.05	1.7	0.03				
<i>Hallea rubrostipulata</i>	1	0.05						
<i>Clausena anisata</i>	1	0.05						
<i>Acacia tortilis</i>	0	0.0			1	1.8	1.34	1.3

F = Feeding records, %F = % feeding records; BA = Basal area of food tree n; SR = Selection ratio of food tree n.

**Table 5.** Density and basal area of food trees in forest fragments and farms, Mbuzi, Tanzania.

Forest fragments	Farms	Unpaired two-sample t test
447 trees/ha	123 trees/ha	t = 4.224; df = 28; P = 0.013
22 trees/plot	6 trees/plot	t = 2.997; df = 28; P = 0.040
28.59 m <sup>2</sup> /ha	10.24 m <sup>2</sup> /ha	t = 4.200; df = 28; P = 0.014

**Figure 3.** Bean crop raiding and other foods eaten with respect to times of the day (bean seeds were eaten only in bean farms). Other foods = food items other than bean seeds eaten in all farms with different crops such as maize, wheat, beans and sorghum, Mbuzi, Tanzania.



rarely guarded, and in those farms monkeys were seen to forage for wild foods and rest in the trees.

The monkeys were seen eating items of 36 identified higher plants, along with two lichens, and some herbs, a liana and a parasitic plant that we were unable to identify. The difference in feeding frequencies on wild species and the bean crop (*Phaseolus*) in the farms was significant ( $\chi^2 = 4.082$ ;  $df = 1$ ;  $P = 0.043$ ). The most frequently eaten items in both forests and farmland were the young leaves and leaf buds of *Parinari excelsa* (Table 3). Despite having the most feeding records, *P. excelsa* trees had low selection ratios, possibly because of their highest basal area in both forests and farms. *Ficus thonningii*, *F. natalensis* and *Albizia gummifera* were mostly selected relative to their abundances in the forests, whereas *Dracaena steudneri* was selected more than expected from its abundance in farms (Table 4). The density and basal area of the trees providing food for monkeys were greater in the forest than in the farms (around the fields) (Table 5).

## Discussion

Young leaves and leaf buds were predominant in the diet of the Ashy red colobus in the forest and the farmland. They spent more time feeding in the forest than the farmland, associated with a smaller basal area and lower density of wild food trees in farmland (Table 5). Some of the important food trees (for example, *P. excelsa*) have been reported as staple food plants for *P. tephrosceles* in Kibale National Park, Uganda (Isbell 2012). Some species in the diet had high selection ratios in the forest and were not found in the farms. Some tree species with a high selection ratio in farms (for example, *D. steudneri*) had low selection ratios in the forest. This indicates that they select certain food plant species based on accessibility, availability, abundance and nutritional content. Some species that were selected by monkeys were not abundant and some which were abundant scored low selection ratios despite their having a high number of feeding records. Mturi (1991) regarded the less eaten plant species to be ‘unpreferred’ when their selection ratios were less than

one (1.0). However, even though ‘unpreferred’ they may still make up a significant portion of the diet. Mturi (1991) provided two explanations for this: (1) plant species exploited less than expected had selection ratios of less than one (1.0) but made up a significant portion of the diet just because they were abundant (for example *P. excelsa*); (2) they might not be ‘unpreferred’, but they were eaten less than expected from their abundance because they were highly abundant and there is a limit to the extent they could be eaten by the monkeys, either due simply to quantity or because of the need to diversify the diet for nutritional reasons. A number of studies have indicated that the plant species that are highly selected despite their low abundance, have a high protein content and low levels of secondary compounds (McKey and Gartlan 1981; Mturi 1991; Fashing *et al.* 2007; Chapman and Chapman 2002). Despite the observed variation in selection ratios of food trees, the conservation of all plant species in the forest is of paramount importance as it is possible that plants eaten less would contribute significantly to the diet of the monkeys for nutritional balance. The red colobus monkeys would occasionally go to the ground to feed on herbaceous vegetation and beans in the forest and farms, respectively.

Crop raiding by the colobus monkeys was infrequent. Sympatric guenons such as the blue monkey (*Cercopithecus mitis*) also raid crops, but blame was usually directed towards the colobus monkeys, probably because the farmers were asked to preserve the forests as habitats specifically for the Endangered red colobus monkeys. Blue monkeys did not stay in the fragments surrounded by farms; they would move far off after feeding, while the red colobus monkeys would stay in the fragments, only raiding crops if there were no people around. The monkeys ate the beans and discarded the pods. Group 1 raided bean crops more than others; fragment A was surrounded by bean farms, whereas farms around the other fragments also cultivated maize, wheat and sorghum. Farmers cultivating beans guarded their crops. Those growing other crops rarely did so, and the monkeys could be seen foraging and resting in the trees on these farms near the edge of the forest.

The colobus monkeys raided bean crops in the evenings around 1700 h–1900 h (Fig. 3) after the farmers had left to go home (see also Strum 2010). The farmers tend to kill the monkeys with the help of dogs because of this behavior. During the preliminary surveys in July 2011, we found a skin of an adult red colobus placed in a tree near the forest to intimidate other monkeys not to raid crops (Fig. 4). Retaliatory killing of monkeys by farmers is believed to be one of the factors leading to the decline of red colobus in the Mbuji Forest, and Struhsaker (2005) listed hunting as a major threat facing red colobus monkeys in their natural habitats. Exposure of colobus monkeys to parasites and pathogens at the forest-farm interface is possible, as reported by Chapman *et al.* (2006) in Kibale National Park.

Tentative explanations have been offered as to why *P. tephrosceles* feed on fresh bean seeds. Seeds are rich in fats, proteins, and minerals such as phosphorus, which are limiting



**Figure 4.** Guides showing a skin of red colobus monkey killed on a bean farm, Mbuji, Tanzania.

to vegetarians (Janson and Chapman 1999). It is here argued that the monkeys feed on fresh beans owing to their digestibility, for supplementary protein, or because of reduced food availability due to ongoing forest fragmentation, degradation and destruction. All the four fragments occupied by the monkeys are extremely fragmented and degraded, as previously reported by Davenport *et al.* (2007). Although degradation was not quantified in this study, it is possible that it has drastically reduced the numbers of food trees for monkeys. Young leaves and flowers of the beans were also eaten by the monkeys.

Fragmentation processes continue to increasingly divide and isolate the forest fragments. Forest clearance is evidently aggravated by a lack of clarity as to forest ownership, creating conflicts among the farmers. The local government authority categorically orders that forests, which farmers believe to be their property, be preserved, in particular for the Endangered Ashy red colobus. Protracted disputes regarding ownership and infrequent patrols by the District Forestry and Wildlife Division result in the forests being divided up amongst the villagers. Other common challenges reported by Oates (2013) are evident in the Mbuzi Forest. It is possible that in many areas nothing or very little remains to support the monkeys; probably the reason for their decline in the Mbuzi Forest on the Ufipa Plateau of the Rukwa Region.

The continued existence of *P. tephrosceles* in the Mbuzi Forest will depend on the effective conservation of their remaining forest patches, addressing the causes of their deterioration and allowing them to recover. Conservation interventions should consider community conservation measures, the provision of adequate funding to local governments for effective law enforcement, and the settlement of forest ownership conflicts, and conservation education, as suggested by Oates (2013).

## Acknowledgments

My sincere thanks to the coordinators of the Wildlife Conservation Society (WCS) for their generous funding, and especially to Tim R. B. Davenport (WCS Country Director–Tanzania) for logistical and technical advice during the fieldwork. I similarly thank the World Bank CBI Project under the coordination of the University of Dar es Salaam for funding the quantification of the food plants for the monkeys. I am most grateful to Mr Noah Mpunga and Ms Sophy Machaga of the Southern Highland Conservation Programme (SHCP) under the Wildlife Conservation Society (WCS) for their invaluable support in coordinating the fieldwork of this study. Thanks should also go to WCS-SHCP Senior Research Assistant Mr Sylvanus Kimiti and his co-research assistants Messrs. Willy Mwalengele, Michael Munis and Lusajo Mwakalinga for their help, especially in the observation of the groups. Messrs. Buto Kilasa and Ramadhani Mduluma, the drivers, were most kind and helpful in taking me to the study sites. I also thank Mr Herman Domminick, popularly known as Mzee Bomoa, for his guidance and endurance in

following the study animals throughout the period of study. The study would have been impossible without the intimate friendship of Mzee Bomoa and his neighbors surrounding the forest. I thank Selemani Haji and Gabriel Laizer for identifying the plants eaten by the monkeys. I am grateful to Adriana Hernández-Aguilar for comments on the manuscript and to Anthony Rylands for his exceptional advice, which greatly improved the quality of this article.

## Literature Cited

- Altmann, J. 1974. Observational study of behavior: sampling methods. *Behaviour* 49: 227–267.
- Anonymous. 1998. *Rukwa Region Socio-Economic Profile*. The Planning Commission, Dar es Salaam and Regional Commissioner's Office, Rukwa, The United Republic of Tanzania. 181pp.
- Chapman, C. A. and L. J. Chapman. 2002. Foraging challenges of red colobus monkeys: influence of nutrients and secondary compounds. *Comp. Biochem. Physiol. Part A* 133: 861–875.
- Chapman, C. A., M. L. Speirs, T. R. Gillespie, T. Holland and K. M. Austad. 2006. Life on the edge: gastrointestinal parasites from the forest edge and interior primate groups. *Am. J. Primatol.* 68: 397–409.
- Chapman, C. A., L. Naughton-Treves, M. J. Lawes, M. D. Wasserman and T. R. Gillespie. 2007. Population declines of colobus in western Uganda and conservation value of forest fragments. *Int. J. Primatol.* 28: 513–528.
- Davenport, T. R. B., N. E. Mpunga and S. J. Machaga. 2007. Census and conservation assessment of the red colobus (*Piliocolobus rufomitratu tephrosceles*) on the Ufipa Plateau, southwest Tanzania: newly-discovered, threatened and extinct populations. *Primate Conserv.* (22): 97–105.
- Fashing, P. J., E. S. Dierenfeld and C. B. Mowry. 2007. Influence of plant and soil chemistry on food selection, ranging patterns, and biomass of *Colobus guereza* in Kakamega Forest, Kenya. *Int. J. Primatol.* 28: 673–703.
- Fourrier, M., R. W. Sussman, R. Kippen and K. Childs. 2008. Demographic modeling of a predator-prey system and its implication for the Gombe Population of *Procolobus rufomitratu tephrosceles*. *Int. J. Primatol.* 29: 497–508.
- Groves, C. P. 2007. The taxonomic diversity of the Colobinae of Africa. *J. Anthropol. Sci.* 85: 7–34.
- Hammer, Ø. 2012. PAST: Paleontological Statistics Version 2.17. Natural History Museum, University of Oslo, Norway
- Isbell, L. A. 2012. Re-evaluating the ecological constraints model with red colobus monkeys (*Procolobus rufomitratu tephrosceles*). *Behaviour* 149: 493–529.
- Janson, C. H. and C. A. Chapman. 1999. *Resources and Primate Community Structure*, Cambridge University Press, Cambridge, UK.
- Kibaja, M. 2012. Habitat Use by the Ashy Red Colobus Monkey (*Procolobus rufomitratu tephrosceles*) in



- Mbuzi Forest, Rukwa Region, Tanzania. MSc (Biodiversity Conservation) dissertation, University of Dar es Salaam, Dar es Salaam.
- Kitegile, A. 2006. Habitat Use and Conservation Status of Black and White Colobus (*Colobus angolensis*) and blue monkeys (*Cercopithecus mitis*) in Amani Nature Reserve, Tanzania. MSc. (Zoology) Thesis, University of Dar es Salaam, Dar es Salaam.
- Li, Y., Z. Jiang, C. Li and C. C. Grueter. 2010. Effects of seasonal folivory and frugivory on ranging patterns in *Rhinopithecus roxellana*. *Int. J. Primatol.* 31: 609–626.
- Martin, P. and P. Bateson. (1993) *Measuring Behaviour. An Introductory Guide*. 2<sup>nd</sup> edition, Cambridge University Press, Cambridge, UK.
- McKey, D. B. and J. S. Gartlan. 1981. Food selection by black colobus monkeys (*Colobus satanas*) in relation to plant chemistry. *Biol. J. Linn. Soc.* 16: 115–146.
- Mligo, C., Lyaruu, H. H. Ndangalasi and R. Marchant. 2009. Vegetation community structure, composition and distribution pattern in the Zaraninge Forest, Bagamoyo District, Tanzania. *J. East Afr. Nat. Hist.* 98: 223–239.
- Mturi, A. 1991. The Feeding Ecology and Behaviour of the Red Colobus (*Colobus badius kirkii*). PhD thesis, University of Dar es Salaam, Dar es Salaam.
- Oates, J. F. 2013. Primate conservation: unmet challenges and the role of the International Primatological Society. *Int. J. Primatol.* 34: 235–245
- Struhsaker, T. T. 2005. Conservation of red colobus and their habitats. *Int. J. Primatol.* 26: 525–538.
- Struhsaker, T. T. 2008. *Procolobus rufomitratus* ssp. *tephrosceles*. The IUCN Red List of Threatened Species. Version 2014.2. <[www.iucnredlist.org](http://www.iucnredlist.org)>. Downloaded on 30 October 2014.
- Struhsaker, T. T. 2010. *The Red Colobus Monkeys: Variation in Demography, Behavior and Ecology of Endangered Species*. Oxford University Press, New York.
- Strum, S. C. 2010. The development of primate raiding: implications for management and conservation. *Int. J. Primatol.* 31: 133–156.
- Tesfaye, D., P. J. Fashing, A. Bekele, A. Mekonnen and A. Aticken. 2013. Ecological flexibility in Boutourlini's blue monkeys (*Cercopithecus mitis boutourlinii*) in Jibat Forest, Ethiopia: a comparison of habitat use, ranging behavior and diet in intact and fragmented forest. *Int. J. Primatol.* 34: 615–640.
- Watts, D. P. and Mitani, J. C. 2002. Hunting behavior of chimpanzees at Ngogo, Kibale National Park, Uganda. *Int. J. Primatol.* 23: 1–28.

#### Author's address

**Mohamed Kibaja**, Department of Zoology and Wildlife Conservation, University of Dar es Salaam, PO Box 35064, Dar es Salaam, Tanzania, e-mail <[kibaja@udsm.ac.tz](mailto:kibaja@udsm.ac.tz)> and Centre for Ecological and Evolutionary Synthesis (CEES), Department of Biosciences, University of Oslo, Box 1066, Blindern, N-0316 Oslo, Norway, e-mail: <[mohamejk@student.matnat.uio.no](mailto:mohamejk@student.matnat.uio.no)>.

*Received for publication: 25 December 2013*

*Revised: 28 October 2014*