

## LETTER TO THE EDITOR (AS AUTHOR)

Author: TARSHIS, I. BARRY

Source: Bulletin of the Wildlife Disease Association, 3(1) : 39

Published By: Wildlife Disease Association

URL: <https://doi.org/10.7589/0090-3558-3.1.39>

---

BioOne Complete ([complete.BioOne.org](https://complete.BioOne.org)) is a full-text database of 200 subscribed and open-access titles in the biological, ecological, and environmental sciences published by nonprofit societies, associations, museums, institutions, and presses.

Your use of this PDF, the BioOne Complete website, and all posted and associated content indicates your acceptance of BioOne's Terms of Use, available at [www.bioone.org/terms-of-use](https://www.bioone.org/terms-of-use).

Usage of BioOne Complete content is strictly limited to personal, educational, and non - commercial use. Commercial inquiries or rights and permissions requests should be directed to the individual publisher as copyright holder.

---

BioOne sees sustainable scholarly publishing as an inherently collaborative enterprise connecting authors, nonprofit publishers, academic institutions, research libraries, and research funders in the common goal of maximizing access to critical research.

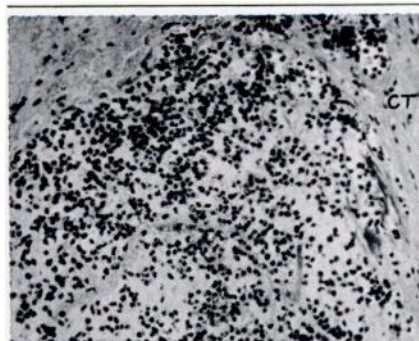


Fig. 2. Neoplasm from the pelvic inlet showing pleomorphic cells suggestive of cells of the lymphocytic series. A connective tissue capsule (CT) surrounds the tumor.

lacing connective tissue strands (Figure 3). Similar cells were found in the alveoli of the lung and in the bronchi and bronchioles adjacent to the tumors. Areas of hemorrhage and calcification were evident in the larger tumors.

Reticulum fibers were present upon silver impregnation staining. However, the tumor did not have the morphologic appearance of a reticulum cell sarcoma.

#### Discussion

The small number of references in the literature to metastatic tumors in Cervidae prompted this report. To our knowledge this is the first case of a

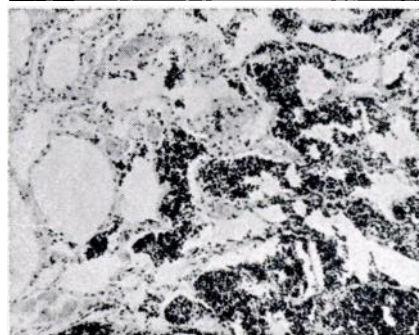


Fig. 3. Lung section showing tumor cells spreading in alveoli and interstitial spaces.

lymphosarcoma reported in free-ranging white-tailed deer, although sarcomatous tumors (Fenstermacher *et al.*, Cornell Vet. 33: 323-332, 1943) and lymphosarcoma (Lombard and Witte, Cancer Res. 19: 127-141, 1959) have been reported in deer; the latter being in captive white-tailed deer. The voluminous reports from worldwide zoological gardens may mention similar lesions. Tumors reported in deer were the subject of a good review by Fay (First White-tailed Deer Disease Symposium, Athens, Ga., 1962). Reticulum cell sarcomas in domestic animals often suggest a primary tumor at the dorsal retroperitoneum but wide distribution of early lesions is also seen (Jubb and Kennedy, Pathology of Domestic Animals, Vol. 1, p. 311, Acad. Press, 1963). Although this tumor appeared to have the dorsal retroperitoneum as its primary site reticulin stain was not conclusive to give a diagnosis of reticulum cell sarcoma.

J. G. DEBBIE and  
M. FRIEND

Div. of Laboratories and Research  
N.Y. State Dept. of Health  
Albany, N.Y., and  
N.Y. State Conservation Dept.  
Albany, N.Y.  
19 October, 1966

#### LETTER TO THE EDITOR (AS AUTHOR)

"In your paper, 'Diseases and Infections of Snakes: A Review', which appeared in the October issue of the *Bulletin*, you omitted an important reference by Tarshis on 'Control of the snake mite (*Ophionyssus natricis*), other mites, and certain insects with the sorptive dust SG 67', published in 1960 in the J. Econ. 53: 903-908. The sorptive dust SG 67 is now referred to as Dri-Die 67.

"It was through my research with the inert dusts that herpetologists around the world started using Dri-Die 67 and found it to be an effective acaricide against *O. natricis*. Since you mentioned Schroeder's paper (on ascaracides), it would have added much to your paper to list other references."

I. BARRY TARSHIS  
Wildlife Parasitologist  
Patuxent Wildlife Research Center  
U.S. Fish & Wildlife Service  
Laurel, Maryland 20810