



A NEW HOST FOR *Chilodenella cyprini* (Moroff, 1902)

Authors: HECKMANN, RICHARD, and LIEBELT, JAMES

Source: Journal of Wildlife Diseases, 6(3) : 174

Published By: Wildlife Disease Association

URL: <https://doi.org/10.7589/0090-3558-6.3.174>

BioOne Complete (complete.BioOne.org) is a full-text database of 200 subscribed and open-access titles in the biological, ecological, and environmental sciences published by nonprofit societies, associations, museums, institutions, and presses.

Your use of this PDF, the BioOne Complete website, and all posted and associated content indicates your acceptance of BioOne's Terms of Use, available at www.bioone.org/terms-of-use.

Usage of BioOne Complete content is strictly limited to personal, educational, and non - commercial use. Commercial inquiries or rights and permissions requests should be directed to the individual publisher as copyright holder.

BioOne sees sustainable scholarly publishing as an inherently collaborative enterprise connecting authors, nonprofit publishers, academic institutions, research libraries, and research funders in the common goal of maximizing access to critical research.

A NEW HOST FOR *Chilodonella cyprini* (Moroff, 1902)

During the summer of 1969, 53 fish (representing six species) were examined for gill parasites. All fish were taken from the Yellowstone River, Livingston, Montana. One specimen, a longnose sucker (*Catostomus catostomus*), was infected with *Chilodonella cyprini* which we believe represents a new record in North America (Hoffman, G. 1967. *Parasites of North American Freshwater Fishes*. Univ. of Calif. Press, Berkeley). This was the only sampled fish infected with gill parasites.

Gill samples were examined from the following fish species: eight *Salmo trutta*, five *S. gairdneri*, eight *S. clarki*, three *Catostomus catostomus*, one *platyrhynchus*, and twenty-eight *Prosopium williamsoni*. Infected gills were fixed in formalin, prepared for histological examination by routine methods and stained with hematoxylin and eosin. Hyperplasia of the epithelium and hemorrhage occurred near the areas occupied by the protozoa (Fig. 1).

Bykhovskaya-Pavlovskaya (1962. *Key to Parasites of Freshwater Fish of the U.S.S.R.* Zool. Inst., Acad. Sci. U.S.S.R.)

stated that, "*Chilodonella* causes irritation of integuments, severe mucous discharge (blephorrhoea) and if the host is emaciated, destruction of epithelium and impairment of respiratory function of the skin and gill filaments".

There were no similar protozoa in the gills of either the other two longnose suckers examined or the other fishes collected at the same time. This is the first known record for *C. cyprini* in longnose suckers from North America.

Acknowledgement

The authors acknowledge the assistance of Dr. Glen Hoffmann who verified the generic classification of the protozoan and Dr. C. J. D. Brown who directed the study.

RICHARD HECKMANN *

JAMES LIEBELT

Dept. of Zoology and Entomology
Montana State University
Bozeman, Montana 59715

*Present address
Dept. of Biology
Fresno State College
Fresno, California 93710

February 10, 1970

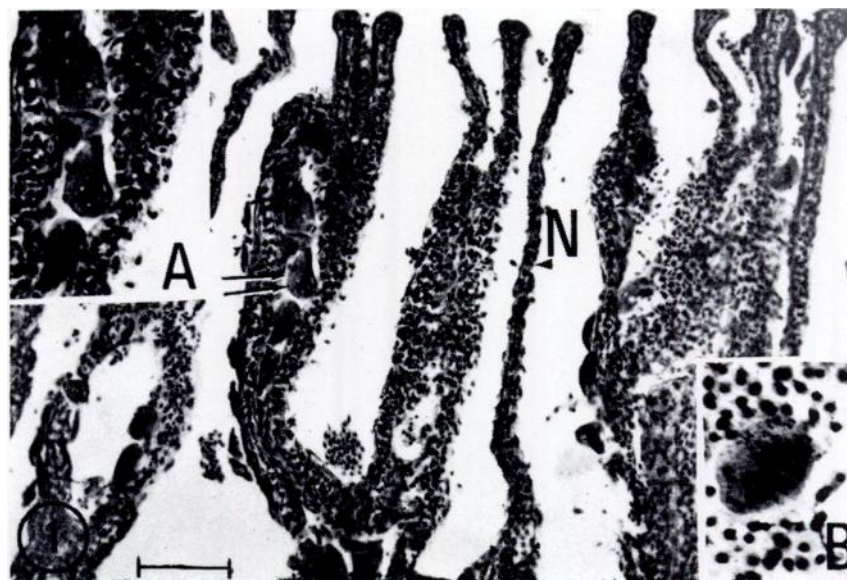


FIGURE 1. A longitudinal section through an infected longnose sucker gill showing *Chilodonella cyprini* (arrows). Note lesions around the parasite. Normal lamella (N). Scale equals 100 microns, stain, Hematoxylin and eosin. Inset A is a higher magnification of the gill section next to the arrows. Inset B is a high magnification of *C. cyprini* surrounded by host blood cells.