



## **Individual distinctiveness across call types of the southern white rhinoceros (*Ceratotherium simum simum*)**

Authors: Linn, Sabrina Nicolleta, Schmidt, Sabine, and Scheumann, Marina

Source: Journal of Mammalogy, 102(2) : 440-456

Published By: American Society of Mammalogists

URL: <https://doi.org/10.1093/jmammal/gyab007>

---

BioOne Complete ([complete.BioOne.org](https://complete.BioOne.org)) is a full-text database of 200 subscribed and open-access titles in the biological, ecological, and environmental sciences published by nonprofit societies, associations, museums, institutions, and presses.

Your use of this PDF, the BioOne Complete website, and all posted and associated content indicates your acceptance of BioOne's Terms of Use, available at [www.bioone.org/terms-of-use](https://www.bioone.org/terms-of-use).

Usage of BioOne Complete content is strictly limited to personal, educational, and non - commercial use. Commercial inquiries or rights and permissions requests should be directed to the individual publisher as copyright holder.

---

BioOne sees sustainable scholarly publishing as an inherently collaborative enterprise connecting authors, nonprofit publishers, academic institutions, research libraries, and research funders in the common goal of maximizing access to critical research.



## Individual distinctiveness across call types of the southern white rhinoceros (*Ceratotherium simum simum*)

SABRINA NICOLLETA LINN, SABINE SCHMIDT, AND MARINA SCHEUMANN<sup>\*,</sup>

Frankfurt Zoo, Bernhard-Grzimek-Allee 1, D-60316 Frankfurt am Main, Germany (SNL)

Institute of Zoology, University of Veterinary Medicine Hannover, Bünteweg 17, D-30559 Hannover, Germany (SS, MS)

\*Correspondent: [marina.scheumann@tiho-hannover.de](mailto:marina.scheumann@tiho-hannover.de)

Individual distinctiveness in the acoustic structure of vocalizations provides a basis for individual recognition in mammals and plays an important role in social behavior. Within a species, call types can differ in individual distinctiveness, which can be explained by three factors, namely differences in the social function, the distance of the caller to the receiver, and the acoustic structure of the call. We explored the variation in individual distinctiveness across three call types (Grunt, Hiss, Snort) of the southern white rhinoceros (*Ceratotherium simum simum*) and investigated to what extent the abovementioned factors account for individual distinctiveness. Calls were recorded from 25 adult southern white rhinoceroses in six different zoos. We used three methods to compare the level of individual distinctiveness across call types, namely discriminant function analysis (DFA), potential for individual identity coding (PIC), and the information criterion ( $H_2$ ). The three call types possessed an acoustic structure capable of showing individual variation to different extents. Individual distinctiveness was lowest for Snorts, intermediate for Hisses, and highest for Grunts. The level of individual distinctiveness of all three call types was lower than that previously reported for Pant calls of this species. Calls functioning to mediate intragroup social interactions had the highest individual distinctiveness. This highlights that a given communicative function and the need for individual discrimination during a social interaction have a major influence on the degree of individual distinctiveness.

Key words: acoustic structure hypothesis, bioacoustics, distance communication hypothesis, information criterion, mammal, nasal call, oral call, potential for individual identity coding, sender identity, social function hypothesis

Vocal communication can be important for coordinating social interactions among animals. Acoustic signals can vary substantially in frequency-time contours and amplitude, and can thus reflect a wide variety of behavioral situations and environmental conditions. Moreover, animals living in a complex social environment have been suggested to use complex communication systems with signals carrying multiple information (e.g., Bouchet et al. 2013; Knörnschild et al. 2019; Peckre et al. 2019). Acoustic signals may convey information about the external environment with which the sender is confronted (e.g., Seyfarth et al. 1980; Manser 2001), about the internal state of the sender (e.g., Bastian and Schmidt 2008; Schehka and Zimmermann 2009; Scheumann et al. 2012), and also about physical characteristics of the sender (e.g., Charlton et al. 2011; Stoeger and Baotic 2016). Thus, vocalization can encode the identity of the individual, which provides the basis for vocal individual discrimination. Individual discrimination is important

for regulating social relationships to govern cohesion, attraction, and avoidance, among conspecifics (August and Anderson 1987; Ehret 2006) such as mother–infant reunions, support of specific group members, or avoidance of inbreeding (e.g., Phillips and Stirling 2000; Torriani et al. 2006; Wittig et al. 2007; Müller and Manser 2008; Bouchet et al. 2012; Kessler et al. 2012; Rubow et al. 2018). It therefore can be assumed that the more complex social organization will favor individual distinctiveness in call types. We investigated the encoding of sender identity in the southern white rhinoceros (*Ceratotherium simum simum*), which, in contrast to all the other solitarily living rhinoceros species, has been described as semisocial (e.g., Hutchins and Kreger 2006).

It has been shown across a wide range of mammalian species (Appendix I) that even if the majority of adult call types show individual distinctiveness, the degree of distinctiveness can vary among different call types within a given species. This suggests

© The Author(s) 2021. Published by Oxford University Press on behalf of the American Society of Mammalogists.

This is an Open Access article distributed under the terms of the Creative Commons Attribution-NonCommercial License (<http://creativecommons.org/licenses/by-nc/4.0/>), which permits non-commercial re-use, distribution, and reproduction in any medium, provided the original work is properly cited. For commercial re-use, please contact [journals.permissions@oup.com](mailto:journals.permissions@oup.com)

that different selection pressures have affected the evolution of individual distinctiveness across different call types. To explain differences in individual distinctiveness related to call type, three major hypotheses have been proposed, which are not mutually exclusive (see Appendix I): the “social function hypothesis” (e.g., Snowdon et al. 1997; Charrier et al. 2001), the “distance communication hypothesis” (Mitani et al. 1996), and the “acoustic structure hypothesis” (e.g., Leliveld et al. 2011).

The “social function hypothesis” assumes that calls functioning in individualized intragroup social interactions, such as contact or aggression calls, should have a higher degree of individual distinctiveness than calls directed to the whole group, such as food, alarm, or loud calls (e.g., Snowdon et al. 1997). Lemasson and Hausberger (2011) expanded the social function hypothesis and proposed that individual distinctiveness was highest in calls related to affiliative contexts, intermediate in calls related to agonistic contexts, and lowest in calls related to general activities or directed to the whole group. Evidence for the social function hypothesis was found in several mammalian orders such as Primates (Chacma baboon—Rendall et al. 2009; rhesus monkeys—Rendall et al. 1998; red-capped mangabeys—Bouchet et al. 2012, 2013), Carnivora (dwarf mongoose—Rubow et al. 2018; domestic dog—Yin and McCowan 2004; giant otter—Mumm et al. 2014), and Rodentia (African woodland dormouse—Ancillotto and Russo 2016).

The “distance communication hypothesis” suggests that individual distinctiveness is related to the transmission distance (Mitani et al. 1996). Thus, long-distance calls emitted out of visual contact with the receiver should have a higher level of individual distinctiveness than calls uttered in close distance where visual or tactile information are additionally available (Mitani et al. 1996). Evidence for the distance communication hypothesis was found in primates (chimpanzees—Mitani et al. 1996; rhesus monkeys—Rendall et al. 1998; gray mouse lemurs—Leliveld et al. 2011), carnivorans (giant otters—Mumm et al. 2014), and rodents (Ancillotto and Russo 2016).

The “acoustic structure hypothesis” is related to call-type-specific vocal production mechanisms. In mammals, the vocal production apparatus is evolutionarily conserved and consists of the lung, the larynx with the vocal folds, and the supra-laryngeal system with the throat, mouth, and nose (e.g., Fant 1960; Lieberman and Blumstein 1988; Fitch 2010). Thus, source- and filter-related factors, namely the anatomical variation of the vocal folds defining the fundamental frequency and the anatomical variations of the supra-laryngeal vocal tract creating formants (source–filter theory; see Fitch 2010; Taylor and Reby 2010), determine individual distinctiveness (e.g., Scherer 1989; Fitch 1997; Belin et al. 2004; Pfefferle and Fischer 2006; Plotsky et al. 2013). In narrow-band tonal calls of high to ultrasonic fundamental frequencies, harmonics at the source level are widely spaced, resulting in little interharmonic energy that can be filtered by the vocal tract. Thus, individual distinctiveness in these calls is critically coded by variation in the fundamental frequency (Yin and McCowan 2004; Leliveld et al. 2011). In contrast, in broadband calls of low fundamental frequency, or without detectable harmonic structure (termed noisy

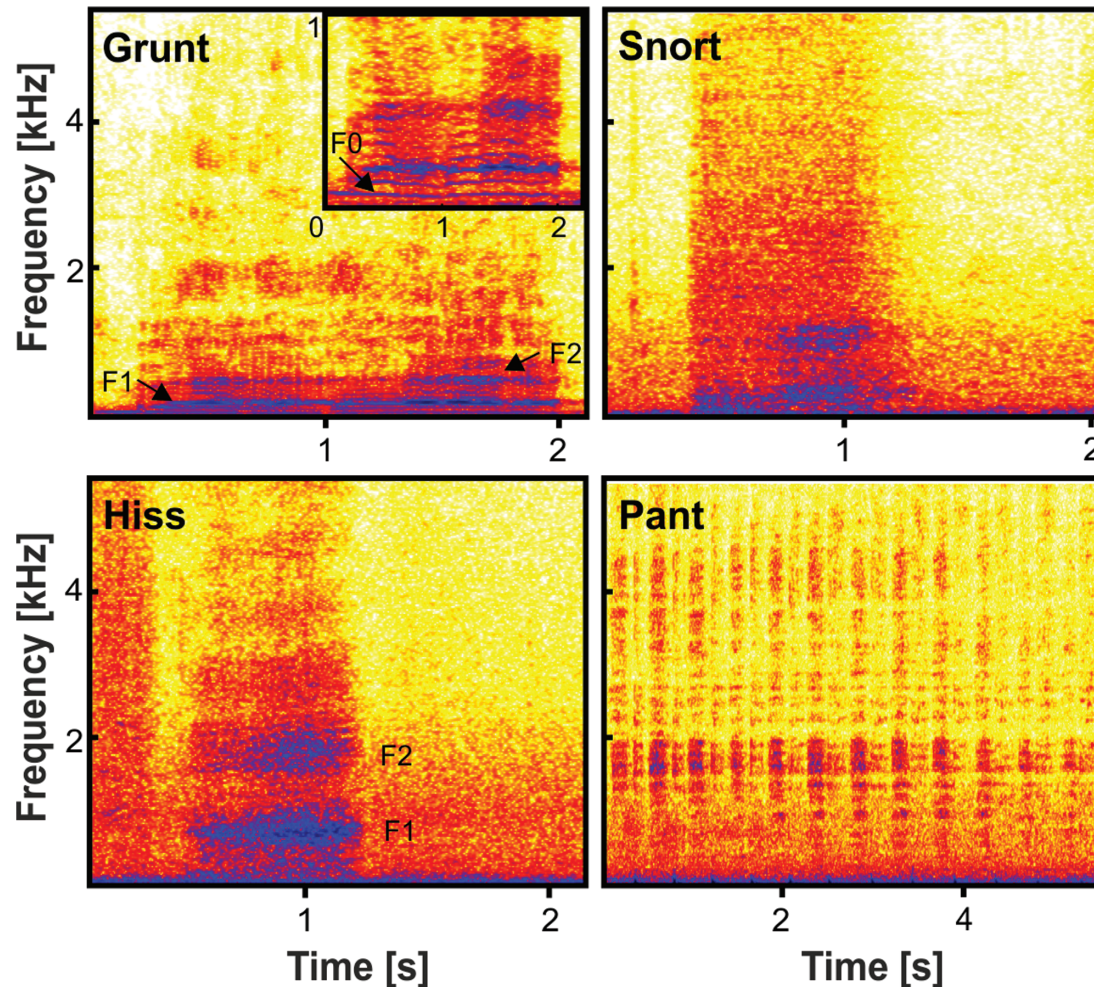
calls), there is a dense energy distribution at the source level. In these calls, the filter function of the vocal tract is the predominant factor determining individual distinctiveness (e.g., Rendall et al. 1998; Taylor and Reby 2010). Even if both factors can encode individual identity, it has been hypothesized that narrow-band harmonic calls are better suited to code for sender identity than broadband noisy calls (Yin and McCowan 2004; Leliveld et al. 2011). Here, the question arises to what extent animal species that predominantly use noisy calls encode sender identity in their vocalizations. Thus, we investigated the encoding of sender identity in the southern white rhinoceros, a species in which noisy calls dominate the vocal repertoire and little is known about information encoded in the vocalizations.

In southern white rhinoceroses, adult bulls live solitarily, but cows occur in groups of different composition (Owen-Smith 1973). Most southern white rhinoceros groups are based on a mother–offspring bond and consist of an adult female and her offspring (Owen-Smith 1973). Adolescents often join with similar-aged companions or mother–offspring dyads. These groupings can persist for extended periods of more than a month or only a couple of days. Group sizes of over 10 individuals can occur (Owen-Smith 1973; Shrader and Owen-Smith 2002). The mating system of southern white rhinoceroses is territorial-based, with males defending their own territories and females ranging freely between male territories (Owen-Smith 1973; Kretzschmar et al. 2020). Given the poor eyesight of rhinoceroses, this more pronounced social organization may favor a more complex acoustic communication system. Indeed, acoustic signals play an essential role in the coordination of mother–infant interactions (Linn et al. 2018), during friendly encounters, during aggressive interactions (Owen-Smith 1973; Policht et al. 2008; Jenikejew et al. 2020), and during mating behavior of southern white rhinoceroses (Owen-Smith 1973; Cinková and Shrader 2020). For example, vocalizations play a very important role in coordinating male and female behavior during consortship (Owen-Smith 1973) where bulls follow a single cow for 2–3 weeks. Bulls emit Pant calls suggested to contain cues about the physical characteristics of the sender, signaling male quality (Cinková and Policht 2014; Cinková and Shrader 2020). If cows are not ready to accept precopulatory contact, they do not tolerate such approaches and usually respond with aggressive calls such as Hisses and Grunts (Owen-Smith 1973).

The southern white rhinoceros has a distinct acoustic communication system in which 10–11 different call types have been discriminated onomatopoeically (Owen-Smith 1973) or based on the acoustic structure (Policht et al. 2008). The majority of calls were described as noisy calls (e.g., Owen-Smith 1973; Policht et al. 2008; Linn et al. 2018). There is, moreover, some evidence for a strong innate component to the development of vocal usage and production in southern white rhinoceroses (Linn et al. 2018).

Only one call type, the Pant (Fig. 1), has been studied in detail. The Pant consists of bouts of repetitive noisy calls produced during inhalation or exhalation and is emitted during isolation from the group, when approaching other conspecifics,





**Fig. 1.**—Sonograms of the common call types of the southern white rhinoceros: Grunt, Hiss, Snort, and Pant. The panel for Grunt includes a zoomed-in sonogram to show the harmonic structure of the call. F0—fundamental frequency, F1—first formant, F2—second formant.

or in the mating context (e.g., Owen-Smith 1973; Policht et al. 2008; Cinková and Policht 2014, 2016; Linn et al. 2018; Cinková and Shrader 2020). It has been found that the Pant encodes information not only about the sender, such as individuality, subspecies, age class, sex, and dominance status, but also about the motivation of the sender (Cinková and Policht 2014, 2016; Cinková and Shrader 2020) and that conspecifics were able to extract sex and subspecies in playback experiments (Cinková and Policht 2016; Cinková and Shrader 2020). For the other call types, the potential for individual signatures is still unknown.

In this study, we investigated the potential for coding sender identity in three of the most common call types of the vocal repertoire of the southern white rhinoceros (*C. s. simum*; Fig. 1). These three call types were emitted in different contexts, at different distances of the caller from their recipient, and differed in their level of harmonicity. Rhinoceros calls therefore are a promising model to explore the above hypotheses on call-type-related differences in distinctiveness. The Snort is uttered during general activities, such as feeding or resting. It is a noisy call, which sounds like an air blow through the nostrils or the mouth (e.g., Owen-Smith 1973;

Policht et al. 2008; Cinková and Policht 2014). The Hiss and the Grunt are uttered during agonistic interactions (e.g., Owen-Smith 1973; Policht et al. 2008; Cinková and Policht 2014; in previous publications, the Hiss has been termed Threat, but we aim to be consistent in labeling all call types using onomatopoetic labels). The Hiss is suggested to serve as first warning, for example, as a reaction to the approach or presence of another individual, whereas the Grunt signals a more pronounced motivation to fight. When the recipient does not react, Hisses are often followed by Grunts in combination with agonistic displays such as horn clashing (Owen-Smith 1973; Policht et al. 2008). Hisses and Grunts are emitted commonly by females or adolescents in response to the presence of a male (Owen-Smith 1973; Policht et al. 2008; personal observations). Hisses sometimes also are emitted in interactions between females or adolescents (Owen-Smith 1973; Policht et al. 2008; personal observations). Both call types differ in their level of tonality. Thus, the Grunt is a broadband call that contains low-frequency harmonic components, whereas the Hiss is a broadband call without tonal structure. To compare our data with the results of Cinková and Policht (2014) for Pant calls, we calculated the information criterion ( $H_c$ ), which

is rather insensitive to differences in sample size (Beecher 1989). In addition, we used discriminant function analysis (DFA) and potential for individual identity coding (PIC) as reported in the literature (see Appendix I) to compare the level of individual distinctiveness between different call types.

To test the three hypotheses, we made the following predictions about how the level of individual distinctiveness should differ between call types (Table 1). For the social function hypothesis, we predict that the Pant, the Hiss, and the Grunt, uttered during specific social interactions, will have a higher level of individual distinctiveness than Snorts uttered during general activities, such as resting or feeding. Moreover, the level of individual distinctiveness should be higher for the Pant uttered during affiliative social interactions than for the Hiss and Grunt uttered during agonistic interactions. For the distance communication hypothesis, we predict that Pant and Snort uttered at variable distances will show a higher level of individual distinctiveness than Hiss and Grunt uttered during close-distance interactions. For the acoustic structure hypothesis, we predict that the Grunts in which a harmonic structure and formants are obvious will show the highest level of individual distinctiveness, Hisses and Pants containing formant-like structures will show an intermediate level, and nasal Snorts will show the lowest level of individual distinctiveness.

## MATERIALS AND METHODS

**Subjects and study site.**—Recordings were made on two juvenile and 23 adult southern white rhinoceroses ranging from 2 to 45 years of age at the following six zoological institutions (Table 2): Serengeti-Park Hodenhagen (February–March 2012, May–June 2014), Dortmund Zoo (September–October 2014), Augsburg Zoo (July–August 2014), Osnabrück Zoo (April–May 2014), Erfurt Zoo (April–May 2015), and Gelsenkirchen Zoo (August–September 2015). Due to the fact that there is no evidence for seasonal trends in reproduction in female rhinoceroses in zoos (Roth 2006), and that reproductive cyclicity in females occurs throughout the year (Patton et al. 1999; Brown et al. 2001), we hypothesize that the different dates had no influence on vocalizations. For five of the six institutions, the groups were observed when the adult bull was kept together with the adult females and their offspring. In the Dortmund Zoo the adult bull was separated physically during the whole

observation period; however, he had visual and olfactory contact with the adult females.

At Augsburg Zoo, the rhinoceros group consisted of three adult females and one adult male. The rhinoceroses were observed in a 14,000-m<sup>2</sup> outdoor enclosure where they lived together during the day with Cameroon sheep (*Ovis aries*) and blesbok (*Damaliscus pygargus phillipsi*). At Osnabrück Zoo, we recorded three adult females and one adult bull that were kept in a 2,000-m<sup>2</sup> outdoor enclosure together with red river hogs (*Potamochoerus porcus*) and Chapman's zebras (*Equus quagga chapmani*). At Dortmund Zoo, we observed two adult females in their 2,250-m<sup>2</sup> outdoor enclosure. One of the females had a 5-month old calf. At Gelsenkirchen Zoo, the rhinoceros group consisted of two adult females and one adult bull. The rhinoceroses were observed in a 5,000-m<sup>2</sup> outdoor enclosure where they lived together with several antelope species. At Erfurt Zoo, we recorded two adult females and one adult bull kept together in a 3,500-m<sup>2</sup> outdoor enclosure during the day. At Serengeti-Park Hodenhagen, the rhinoceros group consisted of 9–11 individuals (2012: six adult females, one adult male, two infants; 2014: five adult females, one adult male, two juveniles, three infants). The adult male was occasionally separated from the herd. Data were mainly recorded in the 9-ha drive-through outdoor enclosure where the rhinoceroses lived together with several other species (e.g., Watusi cattle—*Bos primigenius f. taurus*; zebras—*E. q. chapmani*; ostriches—*Struthio camelus*; lechwes—*Kobus leche*; addax antelopes—*Addax nasomaculatus*; dromedaries—*Camelus dromedarius*). Our research followed the ASM guidelines (Sikes et al. 2016). The article contains only observational data of zoo animals during their daily routine without any manipulation of the animals.

**Data collection.**—Recordings took place throughout the day between 0600 and 1700 h. Audio and video data were collected using the focal animal sampling method (Altmann 1974). Each rhinoceros of a group was observed for a 10-min interval in block-randomized order. When all subjects had been observed once, the next block of focal observations started. Overall, a total of 384 h of data were recorded and analyzed. We recorded 81 h at Augsburg Zoo, 54 h at Osnabrück Zoo, 60 h at Erfurt Zoo, 95 h at Serengeti-Park Hodenhagen, 40 h at Gelsenkirchen Zoo, and 54 h at Dortmund Zoo. Recordings were mainly made in the outdoor enclosures from the visitor or

**Table 1.**—Predictions of level of individual distinctiveness for southern white rhinoceros call types (including acoustic structure, mouth position, context in which they are given, and typical distance at which they are exchanged) and predictions for acoustic variability and individual distinctiveness based on the different hypotheses; SF = social function hypothesis, DC = distance communication hypothesis, AS = acoustic structure hypothesis; inter. = intermediate.

Call type	Acoustic structure	Mouth position	Context	Distance	Hypotheses and predictions		
					SF	DC	AS
Snort	noisy	closed	not obvious, during general activities	various distances (close/inter./far)	low	high/inter.	low
Grunt	low frequency, harmonic components	open	aggressive interactions, powerful warning	close	inter.	low	high
Hiss	low frequency, noisy	closed	aggressive interactions, first warning	close	inter.	low	inter.
Pant	bouts of repetitive noisy calls	closed/ open	friendly approach, during isolation	various distances (close/inter./far)	high	high/inter.	inter.

**Table 2.**—Demographic data of southern white rhinoceroses included in the study and number of selected high-quality calls per call type used for the acoustic analyses.

Individual	Sex	Age* (years)	Zoo	No. of analyzed calls		
				Grunt	Hiss	Snort
Floris	M	37	Osnabrück		6	8
Amalie	F	7	Osnabrück		8	12
Marsita	F	9	Osnabrück		5	20
Lia	F	11	Osnabrück			20
Bantu	M	8	Augsburg		13	11
Baby	F	42	Augsburg	10	20	20
Chris	F	9	Augsburg	11	20	17
Kibibi	F	9	Augsburg	12	20	14
Shakina	F	9	Dortmund		20	18
Natala	F	44	Dortmund		12	11
Dino	M	21	Erfurt			14
Temba	F	17	Erfurt			7
Numbi	F	19	Erfurt		7	
Lekuru	M	11	Gelsenkirchen		5	20
Cera	F	11	Gelsenkirchen		20	15
Tamu	F	12	Gelsenkirchen		20	8
Martin	M	18	Hodenhagen		8	
		21				
Abasi	M	2	Hodenhagen		5	8
Molly	F	43	Hodenhagen			5
		45				
Doris	F	42	Hodenhagen		16	13
		44				
Uzuri	F	6	Hodenhagen	17	20	13
		8				
Kiyanga	F	8	Hodenhagen		20	14
		10				
Claudia	F	13	Hodenhagen	5	20	14
		15				
Jessica	F	17	Hodenhagen	5	6	6
Lara	F	3	Hodenhagen		15	17

\*White rhinoceros females can be regarded as adults from the age of 6 years, males from the age of 10 years (Owen-Smith 1973).

keeper area. Occasionally, recordings were made in the indoor enclosures, when the rhinoceroses had to stay indoors due to weather conditions.

Since it has been suggested that white rhinoceros produce infrasound vocalizations (Muggenthaler et al. 1993) acoustic data were obtained using a Sennheiser omnidirectional microphone (MKH 8020; Sennheiser, Wedemark, Germany) with a frequency response of 10 – 60,000 Hz (frequency response from 10 to 20,000 Hz  $\pm$  5 db) equipped with a windshield and a boom pole. The microphone was connected to a Sound Devices 722 State Recorder (Sound Devices, LLC, Reedsburg, Wisconsin; frequency response of the recorder: 10  $\pm$  20,000 Hz; settings: 44.1 kHz sampling rate, 16 Bit, uncompressed, wav format). Concomitant video recordings were done using a digital camcorder (Sony DCR-SR36E, Tokyo, Japan). To allocate vocalizations to individuals, the observer (SNL) noted the identity of the caller.

*Acoustic analysis.*—The spectrograms of all audio recordings were inspected visually using *Batsound Pro* (2013; settings: fast Fourier transformation [FFT] 512, Hanning window). Calls were classified visually based on previously published vocal repertoires (Policht et al. 2008; Linn et al. 2018). In these studies, call classification was validated using multivariate statistics. For further acoustic analyses, we only selected calls of high quality (no overlap with other sounds,

good signal-to-noise ratio, no clipping). The recordings from different zoos were affected by different ambient noise (e.g., Baker and Logue 2007; Maciej et al. 2011) such as urban, traffic, and building construction noise. Since low frequency signals travel over long distance, even noise sources far away from the recording site necessarily affect the sound recordings, even in high-quality recordings. We used a noise reduction method as applied in other studies, when animal vocalizations were hampered by site-specific noise (e.g., Liu et al. 2003; Baker and Logue 2007; Nair et al. 2009). Namely, we pre-processed the sound files using a bandpass filter of 10 – 10,000 Hz followed by the Wiener Noise Suppressor with Harmonic Regeneration Noise Reduction (HRNR) algorithm (Plapous et al. 2005, 2006) in *Matlab* (2018) (script modified from Pascal Scalart version 1.1.0.0.). We determined a 200-ms noise segment shortly prior to or after the vocalization of interest, which was used as a statistical estimate of the ambient noise and filtered from the original recording of the vocalization to obtain an estimate of the underlying vocalizations (Wiener Filter). Since the Grunts contained a fundamental frequency with harmonics, we decided to use additionally the HRNR method, which is suggested to reduce harmonic distortions for small signal-to-noise ratios (Plapous et al. 2005, 2006). Afterwards, the preprocessed audio files were stored as separate wave files for further acoustic analysis.



We are aware that filtering the acoustic recordings might influence the acoustic measurements and that filtering can cause harmonic distortions known as musical notes. We tried to reduce these effects as much as possible by using 1) high-quality calls, 2) the same procedure for all recordings, 3) a long noise segment directly preceding or following the respective vocalizations without any distinct sound events (e.g., bird calls, human speech) to calculate the statistical background noise, and 4) by using a noise reduction method suggested to reduce harmonic distortions. For Hisses and Snorts, we listened to all filtered vocalizations and selected only calls where musical notes could not be perceived by the experimenter. Taking a random sample of all Hisses and Snorts led to comparable statistical results as taking a sample of these call types including only filtered vocalizations without detectable musical notes. Thus, for the Grunts, for which a limited sample size was available, all calls were used. Sonograms of examples of the original and filtered calls are presented in [Supplementary Data SD1](#).

Because the number of calls per call type and individual varied widely, we randomly selected 5–20 calls per individual of every call type for acoustic analysis to have a call balanced data set. Individuals with less than five calls per call type were not taken into account. In total, 651 calls were included in the acoustic analysis ([Table 2](#); 60 Grunts, 286 Hisses, 305 Snorts). We also recorded Pants in the present study. However, due to their low amplitude and interferences with environmental sounds in the outdoor enclosures, most of these Pants did not satisfy our quality criteria. Therefore, we referred to the results reported in [Cinkova and Policht \(2014\)](#) for comparisons.

The spectral and temporal parameters that were measured differed depending on the call types. We described the spectral composition using [Praat \(2018; self-written script—Boersma 1993, 2001\)](#) by measuring the following nine acoustic parameters for all call types: call duration (DUR), time of maximum amplitude (timeMAXPEAK), percentage of voiced frames (VOI), the center of gravity (COG) of the spectrum, standard deviation of the frequency (*SD*) in the spectrum, the skewness (SKE) as a measure of symmetry of the spectrum, the kurtosis (KUR) describing the deviation of the spectrum from a Gaussian distribution, harmonic-to-noise ratio (HNR), and Wiener entropy (ENTR). For full definitions of all acoustic parameters, see [Table 3](#). Since harmonic-to-noise ratio and Wiener entropy values are based on logarithmic scaling, we have converted these logarithmic values to a linear scale for all subsequent calculations.

If no fundamental frequency contour could be determined in the sonogram (noisy calls) for a time frame, the time frame was set as unvoiced for the calculation of the percentage of voiced frames (VOI). For the harmonic Grunt, we included four additional parameters characterizing the contour of the fundamental frequency (F0): minimum F0 (MINF0), maximum F0 (MAXF0), mean F0 (MEANF0), standard deviation of the F0 (*SDF0*). We used a semiautomatic procedure for pitch tracking. If necessary, we corrected the pitch tracking manually by matching the extracted contour with the sonogram (settings: submenu: “To pitch”; min pitch: 10 Hz; max pitch: 3,000 Hz;

**Table 3.**—Description of measured acoustic parameters.

Parameter	Definition
DUR [s] <sup>a</sup>	Time between the onset and the offset of a call
timeMAXPEAK [s] <sup>a</sup>	Time between the onset and the time point of maximum amplitude of a call
VOI [%] <sup>a</sup>	Percentage of voiced frames of a call
COG [Hz] <sup>a</sup>	Center of gravity—mean frequency of the spectrum weighed by the amplitude
<i>SD</i> [Hz] <sup>a</sup>	Standard deviation of the frequency in a spectrum
SKE <sup>a</sup>	Skewness of the spectrum—difference between the spectral distribution below and above the COG providing a measure of symmetry
KUR <sup>a</sup>	Kurtosis of the spectrum—difference between the spectrum around the COG and a Gaussian distribution
F1 [Hz] <sup>a**</sup>	First formant—first frequency band in the sonogram
BDF1 [Hz] <sup>a**</sup>	Bandwidth of the first formant
F2 [Hz] <sup>a**</sup>	Second formant—second frequency band in the sonogram
BDF2 [Hz] <sup>a**</sup>	Bandwidth of the second formant
HNR <sup>a</sup>	Harmonic-to-noise ratio
ENTR <sup>a</sup>	Wiener entropy—ratio of geometric to arithmetic energy
MIN(max) [Hz] <sup>b</sup>	Minimum frequency at which the amplitude is 20 db below the peak amplitude measured at the time window of maximum amplitude
MAX(max) [Hz] <sup>b</sup>	Maximum frequency at which the amplitude is 20 db below the peak amplitude measured at the time window of maximum amplitude
BAND(max) [Hz] <sup>b</sup>	Bandwidth difference between maximum and minimum frequency using a threshold of 10 db to the peak amplitude measured at the time point of maximum amplitude
25%	Frequency of the power spectrum at which 25% of the total energy is reached measured at the time point of maximum amplitude
QUART(max) [Hz] <sup>b</sup>	Frequency of the power spectrum at which 25% of the total energy is reached measured at the time point of maximum amplitude
50%	Frequency of the power spectrum at which 50% of the total energy is reached measured at the time point of maximum amplitude
QUART(max) [Hz] <sup>b</sup>	Frequency of the power spectrum at which 50% of the total energy is reached measured at the time point of maximum amplitude
75%	Frequency of the power spectrum at which 75% of the total energy is reached measured at the time point of maximum amplitude
QUART(max) [Hz] <sup>b</sup>	Frequency of the power spectrum at which 75% of the total energy is reached measured at the time point of maximum amplitude
MIN(mean) [Hz] <sup>b</sup>	Minimum frequency at which the amplitude is 20 db below the peak amplitude measured over the mean spectrum of the entire call
MAX(mean) [Hz] <sup>b</sup>	Maximum frequency at which the amplitude is 20 db below the peak amplitude measured over the mean spectrum of the entire call
BAND(mean) [Hz] <sup>b</sup>	Bandwidth difference between maximum and minimum frequency using a threshold of 10 db to the peak amplitude measured over the mean spectrum of the entire call
25%	Frequency of the power spectrum at which 25% of the total energy is reached measured over the mean spectrum of the entire call
QUART(mean) [Hz] <sup>b</sup>	Frequency of the power spectrum at which 25% of the total energy is reached measured over the mean spectrum of the entire call
50%	Frequency of the power spectrum at which 50% of the total energy is reached measured over the mean spectrum of the entire call
QUART(mean) [Hz] <sup>b</sup>	Frequency of the power spectrum at which 50% of the total energy is reached measured over the mean spectrum of the entire call
75%	Frequency of the power spectrum at which 75% of the total energy is reached measured over the mean spectrum of the entire call
QUART(mean) [Hz] <sup>b</sup>	Frequency of the power spectrum at which 75% of the total energy is reached measured over the mean spectrum of the entire call
MINF0 [Hz] <sup>a*</sup>	Minimum fundamental frequency of a call
MAXF0 [Hz] <sup>a**</sup>	Maximum fundamental frequency of a call
MEANF0 [Hz] <sup>a**</sup>	Mean fundamental frequency of a call
SDF0 [Hz] <sup>a**</sup>	Standard deviation of the fundamental frequency of a call

<sup>a</sup>Measured in PRAAT.

<sup>b</sup>Measured in AVISOFT at the location of maximum and mean amplitude.

\*Only measured for the Grunt.

\*\*Only measured for the Grunt and the Hiss.

time steps: 0.005). However, since it has been suggested that noisy calls might be well suited for extraction of filter-related formants (e.g., [Plotsky et al. 2013](#); [Gamba 2014](#)), we additionally measured four formant parameters using Praat sub-menu “quantify formant”: first formant (F1), bandwidth of the first formant (BDF1), second formant (F2), and bandwidth of the second formant (BDF2). For the Grunts, we estimated the expected number of formants based on the following formula ([Pfefferle and Fischer 2006](#)):

$$N = \frac{2 \times L}{c} \times f_c$$

where  $N$  = number of formants,  $L$  = vocal tract length [m],  $c$  = speed of sound (340 m/s), and  $f_c$  = cutoff frequency of the measurement range [Hz]. We based our calculation on the oral vocal tract length (0.72 m) of a cadaver measured by R. Frey (Leibniz Institute for Zoo and Wildlife Research, pers. comm.) to get an indication of how many formants we can expect. Based on the calculated values and on visual inspections of the sonogram, we used the following setting for Grunts: number of formants: 4; max formant value: 1,000 Hz; time steps: 0.05 s. For the Hiss we were not able to use the formula since the expected formant frequencies did not correspond to the dominant frequency bands in the sonogram. To track these frequency bands we based our setting on visual inspection of the sonograms and used the following settings: number of formants: 3; max formant value: 5,000 Hz; time steps: 0.05 s. For Snorts, the frequency band of high energy was reflected by the center of gravity. Further emphasized frequency bands were barely detected. Therefore, we measured no formants for Snort calls.

In addition, we measured the minimum frequency (MIN), maximum frequency (MAX), and bandwidth (BAND), as well as the frequencies of the first, second, or third quarter of total energy in the spectrum (25%QUART, 50%QUART, 75%QUART; FFT 1024, Hanning window) for all call types using the automatic measurement routine of [Avisoft \(2018\)](#). Measurements were taken at the time point of maximum amplitude (max) as well as across the whole call (mean).

**Statistical analysis.**—In the first part of the analysis, we investigated the potential of each call type to encode sender identity using the whole data set. Using the Kolmogorov–Smirnov test, we confirmed that the majority of acoustic parameters for the majority of individuals were normally distributed ( $P \leq 0.05$ ). We tested whether the acoustic parameters differed between individuals by calculating a linear mixed model with the acoustic parameter as the dependent variable, the sender as predictor variable, and zoo as a random variable (“nlme” package; [Rstudio Team 2016](#)), and tested the effect of the sender using the “anova” function. The random variable zoo was added to account for call adaptations in response to site-specific noise, or similarities based on relatedness of individuals in a given zoo. To control for multiple testing of the same null hypothesis, we carried out the Fisher-Omnibus test ([Haccou and Melis 1994](#)). This test combines the  $P$ -values of the different ANOVAs into a single chi-square distributed variable resulting in an overall

$P$ -value and thereby in a rejection or acceptance of the null hypothesis. The degrees of freedom represent twice the number of included  $P$ -values. Based on the significant parameters in the linear mixed model, we carried out a principal component analysis (PCA) and extracted principal components (PCs) with an eigenvalue higher than 1 to reduce the number of parameters. In that manner, correlating acoustic parameters were represented by the same PC. To investigate whether calls can correctly be classified to the respective individuals, we carried out an independent DFA based on these PCs using the leave-one-out method for cross-validation. To test whether the number of correctly classified calls was significantly higher than expected by chance, we performed a binomial test for each subject and calculated the level of agreement using the kappa test ([Scheumann et al. 2007](#)). The level of agreement was defined as follows: Cohen’s kappa < 0.00 = poor agreement, 0.00–0.20 = slight agreement, 0.21–0.40 = fair agreement, 0.41–0.60 = moderate agreement, 0.61–0.80 = substantial agreement, and 0.81–1.00 = almost perfect agreement ([Landis and Koch 1977](#)). To estimate which parameters were important for classification, we investigated the correlation between the DFA function with the PCs and afterwards the correlations of the PCs with the acoustic parameters. Parameters with a loading factor higher than 0.7 were considered as having a strong impact on the respective PC.

In addition, we calculated potential for individual identity coding (PIC) for each parameter and call type according to [Robisson et al. \(1993\)](#). The PIC tested whether the interindividual variation of a call type was larger than its intraindividual variation. For the PIC analysis, we calculated the mean ( $MEAN_{Within}$ ) and standard deviation ( $SD_{Within}$ ) of each subject for each acoustic parameter as well as for the mean ( $MEAN_{Between}$ ) and standard deviation ( $SD_{Between}$ ) of the whole data set. Using these parameters, we obtained the within-individual ( $CI_{Wi}$ ) and between-individual ( $CI_B$ ) coefficients of variation ( $CI = 100 * (1 + 1/4n) * SD/MEAN$ ), where  $n$  is the number of calls. Further, we calculated the  $CI_{W}$  by averaging the  $CI_{Wi}$  of all subjects. We determined the PIC for each parameter by calculating the ratio  $PIC = CI_B/CI_W$  (e.g., [Ligout et al. 2004](#); [Bouchet et al. 2012](#)). A value of  $PIC > 1$  indicates that this parameter is potentially capable of encoding individuality. Additionally, we calculated the  $PIC_{Overall}$  as mean of all PIC values across the parameters ([Salmi et al. 2014](#)).

In the second part of the analysis, we aimed to compare the level of individual distinctiveness across call types. Since the results of the DFA are affected by the number of individuals included in the analysis (e.g., [Beecher 1989](#)), we balanced our sample and compared the six individuals for which data on all three call types were available. Then, we performed again the DFA as described before.

The information capacity criterion ( $H_s$ ) according to [Beecher \(1989\)](#) is based on information theory and calculated in bits. The value  $2^{H_s}$  estimates the number of individuals that can be potentially discriminated based on the considered acoustic parameters of the call. We carried out a one-way ANOVA testing whether the PC scores of the above



described PCA differed between individuals. We used the mean squares (MS) of the significant PC components (e.g., Beecher 1989; Bouchet et al. 2013) to calculate the estimates for within-individual variance ( $S^2_W = MS_W$ ) and between-individual variance ( $S^2_B = (MS_B - MS_W)/n_0$ ) according to Lessells and Boag (1987). Thereby,  $MS_B$  is the mean square of between-individual variance,  $MS_W$  is the mean square of within-individual variance and  $n_0$  is a coefficient related to the sample size. The value of  $n_0$  is calculated using following formula:

$$n_0 = [1/(a - 1)] \times \left[ \sum_{i=1}^a n_i - \left( \frac{\sum_{i=1}^a n_i^2}{\sum_{i=1}^a n_i} \right) \right]$$

( $a$  = number of groups;  $n_i$  = number of calls in the  $i$ th group) and represents the mean sample size per individual. Based on these estimated variances, we calculated the information criterion ( $H_i = \log_2(S^2_T/S^2_W)$ ). The total variance  $S^2_T$  was calculated as the sum of  $S^2_W + S^2_B$ . To estimate the information capacity of a call the information criterions of all significant PCs were summed ( $H_s = \sum H_i$ ).

For the comparison of the level of individual distinctiveness, we also calculated the PIC<sub>overall</sub> and the  $H_s$  for the balanced data set.

## RESULTS

**Grunt.**—The ANOVAs revealed that 21 out of 29 acoustic parameters were significantly different across individuals ( $F_{5,54} \geq 5$ ,  $P \leq 0.040$  and for MINF0, MAXF0, and MEANF0  $F_{5,36} \geq 4$ ,  $P \leq 0.010$ , Fisher-Omnibus test:  $\chi^2 = 281.58$ ,  $d.f. = 58$ ,

$P < 0.001$ ; Table 4). A PCA based on these significant parameters (except MINF0, MAXF0, and MEANF0, which could not be obtained for all Grunt calls and the other call types) extracted five PCs with an eigenvalue higher than 1 explaining 85% of the variance. An independent DFA based on these five PCs was able to classify 65% of the calls to the respective individual (cross-validation: 57%). Significantly more calls were correctly classified than expected by chance for five out of six individuals (binomial test:  $P \leq 0.036$ ). The kappa test resulted in a moderate agreement between the results of the DFA and the observed data (0.56). The DFA calculated five DFs. DF1 and DF2 explained 75% of the variation in the calls. DF1 showed the highest correlation to PC2 ( $r = -0.604$ ) and DF2 to PC1 ( $r = 0.732$ ). PC1 showed the highest loading on parameters 50%QUART(mean), 25%QUART(mean), MAX(mean), BAND(mean), and COG ( $r \geq 0.810$ ). PC2 showed the highest loading on parameters 25%QUART(max) and 50%QUART(max) ( $r \geq 0.796$ ). Thus, spectral parameters play a predominant role in encoding sender identity. Twenty-four of 29 parameters showed a PIC > 1 suggesting a potential for identity coding (Table 4).

**Hiss.**—The ANOVAs revealed that 17 out of 24 parameters were significantly different across individuals ( $F_{20,265} \geq 2.0$ ,  $P \leq 0.030$ ; Fisher-Omnibus test:  $\chi^2 = 248.10$ ,  $d.f. = 48$ ,  $P < 0.001$ ; Table 5). A PCA based on these significant parameters extracted five PCs with an eigenvalue higher than 1 explaining 78% of the variance. An independent DFA based on these five PCs was able to classify 26% of the calls to

**Table 4.**—Individual differences in the acoustic parameters of the Grunt of the southern white rhinoceros. PIC = potential for individual identity coding,  $CI_B$  = between-individual coefficient of variance,  $CI_W$  = within-individual coefficient of variance. Bold indicates PIC > 1.0 and  $P > 0.05$ ; \* $F_{5,36}$ .

	Descriptive		PIC			ANOVA	
	Mean	SD	$CI_B$	$CI_W$	PIC	$F_{5,54}$	$P$
DUR [s]	1.78	0.97	54.61	54.92	1.0	1.4	0.234
timeMAXPEAK [s]	1.01	0.86	85.59	82.63	1.0	2.3	0.057
VOI [%]	37.46	31.85	85.36	98.20	0.9	4.2	<b>0.003</b>
COG [Hz]	339.12	126.89	37.57	35.28	<b>1.1</b>	5	<b>&lt; 0.001</b>
SD [Hz]	294.64	190.43	64.90	48.70	<b>1.3</b>	3.6	<b>0.008</b>
SKE	8.40	5.19	61.98	51.09	<b>1.2</b>	6.9	<b>&lt; 0.001</b>
KUR	305.61	433.10	142.31	85.30	<b>1.7</b>	3.2	<b>0.014</b>
F1 [Hz]	235.77	57.40	24.45	19.33	<b>1.3</b>	5	<b>&lt; 0.001</b>
BDF1 [Hz]	38.61	43.23	112.44	96.66	<b>1.2</b>	0.6	0.713
F2 [Hz]	467.73	73.31	15.74	15.11	1.0	1.0	0.447
BDF2 [Hz]	157.86	187.76	119.44	110.06	<b>1.1</b>	1.8	0.127
HNR	1.60	0.46	29.04	17.00	<b>1.7</b>	9	<b>&lt; 0.001</b>
ENTR	0.35	0.12	33.12	28.12	<b>1.2</b>	6	<b>&lt; 0.001</b>
MIN(max) [Hz]	89.17	74.61	84.03	43.05	<b>2.0</b>	5.6	<b>&lt; 0.001</b>
MAX(max) [Hz]	912.50	487.44	53.64	46.38	<b>1.2</b>	3.1	<b>0.016</b>
BAND(max) [Hz]	816.67	473.83	58.26	50.46	<b>1.2</b>	2.5	<b>0.040</b>
25% QUART(max) [Hz]	257.33	134.57	52.51	36.52	<b>1.4</b>	9	<b>&lt; 0.001</b>
50% QUART(max) [Hz]	354.50	156.16	44.23	34.24	<b>1.3</b>	10	<b>&lt; 0.001</b>
75% QUART(max) [Hz]	622.17	304.72	49.18	48.23	1.0	2.3	0.056
MIN(mean) [Hz]	80.33	36.17	45.21	29.59	<b>1.5</b>	1.3	0.299
MAX(mean) [Hz]	1,168.00	369.80	31.79	24.37	<b>1.3</b>	6	<b>&lt; 0.001</b>
BAND(mean) [Hz]	1,080.67	372.57	34.62	26.36	<b>1.3</b>	6	<b>&lt; 0.001</b>
25% QUART(mean) [Hz]	301.17	87.95	29.33	24.07	<b>1.2</b>	6	<b>&lt; 0.001</b>
50% QUART(mean) [Hz]	489.33	149.63	30.71	24.78	<b>1.2</b>	7	<b>&lt; 0.001</b>
75% QUART(mean) [Hz]	877.67	489.73	56.03	37.26	<b>1.5</b>	6	<b>&lt; 0.001</b>
MINF0 [Hz]	53.43	8.57	16.13	13.47	<b>1.2</b>	4*	<b>0.006</b>
MAXF0 [Hz]	69.21	17.89	26.00	22.90	<b>1.1</b>	4*	<b>0.010</b>
MEANF0 [Hz]	59.92	8.92	14.97	12.42	<b>1.2</b>	6*	<b>&lt; 0.001</b>
SDF0 [Hz]	3.99	3.19	80.60	64.65	<b>1.3</b>	0.7*	0.615

**Table 5.**—Individual differences in the acoustic parameters of the Hiss of the southern white rhinoceros. PIC = potential for individual identity coding,  $CI_B$  = between-individual coefficient of variance,  $CI_W$  = within-individual coefficient of variance. Bold indicates PIC > 1.0 and  $P > 0.05$ .

	Descriptive		PIC		ANOVA		
	Mean	SD	$CI_B$	$CI_W$	PIC	$F_{20,265}$	$P$
DUR [s]	0.53	0.24	45.16	33.12	<b>1.4</b>	5	< <b>0.001</b>
timeMAXPEAK [s]	0.23	0.13	57.04	45.57	<b>1.3</b>	3	< <b>0.001</b>
COG [Hz]	785.27	161.41	20.57	17.34	<b>1.2</b>	3	< <b>0.001</b>
SD [Hz]	491.35	213.18	43.42	37.73	<b>1.2</b>	4	< <b>0.001</b>
SKE	5.72	3.47	60.75	45.52	<b>1.3</b>	2	<b>0.008</b>
KUR	121.66	201.59	165.85	87.38	<b>1.9</b>	1	0.401
F1 [Hz]	845.30	82.06	9.72	8.06	<b>1.2</b>	4	< <b>0.001</b>
BDF1 [Hz]	233.71	218.80	93.70	78.63	<b>1.2</b>	2	0.057
F2 [Hz]	2,214.04	248.56	11.24	9.70	<b>1.2</b>	5	< <b>0.001</b>
BDF2 [Hz]	450.44	331.49	73.66	52.59	<b>1.4</b>	1	0.132
HNR	1.18	0.42	35.64	28.63	<b>1.2</b>	4	< <b>0.001</b>
ENTR	0.71	0.08	11.84	11.41	1.0	2	<b>0.002</b>
MIN(max) [Hz]	261.89	196.21	74.99	70.00	<b>1.1</b>	3	< <b>0.001</b>
MAX(max) [Hz]	1,716.40	713.70	41.62	41.50	1.0	1	0.100
BAND(max) [Hz]	1,449.27	746.91	51.58	50.02	1.0	2	<b>0.030</b>
25% QUART(max) [Hz]	648.50	210.19	32.44	33.25	1.0	2	<b>0.005</b>
50% QUART(max) [Hz]	832.69	192.72	23.16	22.18	1.0	2	<b>0.001</b>
75% QUART(max) [Hz]	1,301.40	465.17	35.77	35.36	1.0	2	0.060
MIN(mean) [Hz]	152.55	121.47	79.69	54.48	<b>1.5</b>	3	< <b>0.001</b>
MAX(mean) [Hz]	2,286.33	665.67	29.14	27.90	1.0	1	0.213
BAND(mean) [Hz]	2,128.01	690.63	32.48	30.44	<b>1.1</b>	1	0.144
25% QUART(mean) [Hz]	643.53	132.03	20.53	16.39	<b>1.3</b>	7	< <b>0.001</b>
50% QUART(mean) [Hz]	908.43	143.55	15.82	13.11	<b>1.2</b>	3	< <b>0.001</b>
75% QUART(mean) [Hz]	1,559.13	482.97	31.00	29.49	<b>1.1</b>	3	< <b>0.001</b>

the respective individual (cross-validation: 19%). The kappa test revealed a slight agreement (0.20) between the observed data and the classification by the DFA. For 11 out of 21 individuals significantly more calls were correctly classified than expected by chance (binomial test:  $P \leq 0.047$ ). The DFA calculated five DFs. DF1 and DF2 explained 71% of the variation in the calls. DF1 showed the highest correlation to PC2 ( $r = 0.627$ ) and DF2 showed the highest correlation to PC5 ( $r = 0.794$ ). PC2 showed the highest loading on factors SD, ENTR, and MIN(max) ( $r \geq |0.7011$ ). Seventeen out of these 24 parameters showed a PIC > 1 and thus could potentially be involved in the encoding of individuality (Table 5).

**Snort.**—The ANOVAs revealed that 16 out of 20 parameters that were measured for Snort vocalizations differed significantly across individuals ( $F_{22,282} \geq 2, P \leq 0.028$ ; Fisher-Omnibus test:  $\chi^2 = 219.20, d.f. = 40, P < 0.001$ ; Table 6). The PCA based on these acoustic parameters extracted three PCs with an eigenvalue higher than 1 explaining 77% of the variance. An independent DFA based on these three PCs was able to classify 16% of the calls to the respective individual (cross-validation: 14%). The kappa test showed only a slight agreement (0.11). For six out of 23 individuals, significantly more calls were correctly classified than expected by chance (binomial test:  $P \leq 0.039$ ). The DFA calculated three DFs. DF1 and DF2 explained 77% of the variation in the calls. DF1 showed the highest correlation to PC2 ( $r = 0.840$ ), whereas DF2 showed the highest correlation to PC1 ( $r = 0.923$ ). PC1 showed the highest loading on almost all filter-related parameters ( $r \geq |0.7001$  for all except MIN(max) and 25%Quart(max)). PC2 showed highest loading on MIN(max) ( $r = 0.747$ ). All 20 parameters showed a PIC > 1 and could potentially be involved in the encoding of individuality (Table 6).

**Comparison of call types.**—The DFA based on a balanced sample of an identical number of individuals per call type ( $n_{ind} = 6, 5-20$  calls per individual; Table 7) revealed a classification accuracy of 65% in Grunts (cross-validation: 57%), 44% in Hisses (cross-validation: 38%), and 30% in Snorts (cross-validation: 25%). Thus, classification accuracy decreased from Grunts to Hisses to Snorts. This was supported by the kappa values, which also decreased from 0.56 for Grunts, suggesting moderate agreement, to 0.32 for Hisses, suggesting a fair agreement, to 0.13 for Snorts, reflecting a slight agreement. In addition, the overall PIC and the  $H_s$  showed the same pattern. Based on the subject balanced data set, the  $PIC_{Overall}$  and the  $H_s$  were lowest for Snorts ( $PIC = 1.1; H_s = 0.59$ ), intermediate for Hisses ( $PIC = 1.2; H_s = 0.91$ ), and highest for Grunts ( $PIC = 1.3, H_s = 2.63$ ; Table 7). The values obtained for the balanced data set did not vary much from the total data set for Snorts ( $PIC_{Overall} = 1.2, H_s = 0.50$ ) and only slightly for Hisses ( $PIC_{Overall} = 1.2, H_s = 1.25$ ).

## DISCUSSION

All three call types, the Grunt, the Hiss, and the Snort, possessed an acoustic structure capable of encoding individual identity according to their overall PIC (larger than 1) but differed in their acoustic variability and individual distinctiveness (Table 7). Based on the calculated information criterion ( $H_s$ ), the level of individual distinctiveness increased from Snort to Hiss to Grunt. The  $H_s$  for the Pant reported by Cinková and Policht (2014;  $H_s = 3.15$ ) was much higher than the  $H_s$  determined for the call types analyzed in the present study. Our analysis revealed that the differences in the degree of individual distinctiveness across call types are barely explained by the distance

**Table 6.**—Individual differences in the acoustic parameters of the Snort of the southern white rhinoceros. PIC = potential for individual identity coding,  $CI_B$  = between-individual coefficient of variance,  $CI_W$  = within-individual coefficient of variance. Bold indicates PIC > 1.0 and  $P > 0.05$ .

	Descriptive		PIC			ANOVA	
	Mean	SD	$CI_B$	$CI_W$	PIC	$F_{22, 282}$	$P$
DUR [s]	0.52	0.18	33.66	29.34	<b>1.2</b>	2	< <b>0.001</b>
timeMAXPEAK [s]	0.17	0.09	54.99	49.30	<b>1.1</b>	2	<b>0.009</b>
COG [Hz]	866.02	395.94	45.76	41.26	<b>1.1</b>	3	< <b>0.001</b>
SD [Hz]	972.70	362.40	37.29	33.40	<b>1.1</b>	3	< <b>0.001</b>
SKE	4.17	2.34	56.09	45.93	<b>1.2</b>	4	< <b>0.001</b>
KUR	33.51	45.14	134.82	91.71	<b>1.5</b>	5	< <b>0.001</b>
HNR	0.82	0.17	21.03	19.97	<b>1.1</b>	1	0.406
ENTR	0.71	0.08	10.48	9.66	<b>1.1</b>	3	< <b>0.001</b>
MIN(max) [Hz]	104.70	97.15	92.86	72.82	<b>1.3</b>	2	<b>0.028</b>
MAX(max) [Hz]	2,408.58	1,668.55	69.33	66.03	<b>1.1</b>	1	0.117
BAND(max) [Hz]	2,299.48	1,663.32	72.39	68.93	<b>1.1</b>	1	0.103
25% QUART(max) [Hz]	494.16	320.96	65.00	55.97	<b>1.2</b>	3	< <b>0.001</b>
50% QUART(max) [Hz]	991.39	603.28	60.90	54.81	<b>1.1</b>	2	<b>0.004</b>
75% QUART(max) [Hz]	2,286.17	1,061.80	46.48	43.30	<b>1.1</b>	3	< <b>0.001</b>
MIN(mean) [Hz]	79.03	41.21	52.19	33.63	<b>1.6</b>	1	0.512
MAX(mean) [Hz]	3,667.83	1,939.55	52.92	50.16	<b>1.1</b>	2	< <b>0.001</b>
BAND(mean) [Hz]	3,583.61	1,941.46	54.22	51.45	<b>1.1</b>	2	<b>0.001</b>
25% QUART(mean) [Hz]	613.35	239.37	39.06	32.79	<b>1.2</b>	4	< <b>0.001</b>
50% QUART(mean) [Hz]	1,307.84	533.86	40.85	37.75	<b>1.2</b>	3	< <b>0.001</b>
75% QUART(mean) [Hz]	2,831.87	939.58	33.21	30.84	<b>1.1</b>	3	< <b>0.001</b>

**Table 7.**—Comparison of the potential for individual identity coding and classification accuracy between the call types Grunt, Hiss, and Snort of the southern white rhinoceros. PIC = potential for individual identity coding,  $H_s$  = information criterion, DFA = discriminant function analysis, Total = total data set, Bal. = subject balanced data set,  $n$  = number of individuals, PC = principal component.

	Grunt		Hiss		Snort	
	Total = Bal. ( $n = 6$ )		Total ( $n = 21$ )	Bal. ( $n = 6$ )	Total ( $n = 23$ )	Bal. ( $n = 6$ )
Overall PIC	1.3		1.2	1.2	1.2	1.1
$H_s$	2.63		1.25	0.91	0.50	0.59
No. of PC factors	5		5	4	3	2
DFA						
Original classification [%]	65		26	44	16	30
Cross-validation [%]	57		19	38	14	25
Mean chance level per individual [%]	< 28%		< 7%	< 19%	< 7%	< 24%
Kappa test	0.56		0.20	0.32	0.11	0.13
Classification category	moderate		slight	fair	slight	slight

communication hypothesis, partly by the acoustic structure hypothesis, and best by the social function hypothesis.

The present data provide no support for the distance communication hypothesis. Individual distinctiveness was much higher in the Grunt and the Hiss used for short-distance communication than in the Snort that is uttered at variable distances to other individuals (Linn et al. 2018). However, the hypothesis is supported when taking into account the Pant with its high degree of individual distinctiveness, which has been suggested to serve for long-distance communication since this call type has been recorded in situations with conspecifics several hundred meters away (Cinková and Policht 2014). The Pant is uttered with the mouth closed (sometimes only the lip is moving due to flehmen during vocalizations; Linn et al. 2018; personal observations) as is the Snort, and sound pressure levels of nasal vocalizations in general are much lower than those of oral sounds due to the fact that in most mammalian species the nasal passages are convoluted and filled with spongy absorbing tissue (Wiley and Richards 1978). Thus, in African elephants (*Loxodonta Africana*—Stoeger et al. 2012) and sheep

(Sébe et al. 2010), oral calls are considerably louder than those emitted through the nose or trunk. As vocalizations with low amplitude will not propagate as far as those with high amplitude, it is questionable whether the Pant and the Snort are used for long-distance communication. That the Pant indeed is a low-amplitude call is supported by the difficulties we had to record high-quality Pant calls during social interactions. In the present study, we recorded 690 Pant calls. However, due to its low amplitude characteristics, interferences with sounds from animal locomotion or Hisses of female conspecifics, in particular, we were not able to extract a sufficiently large number of calls satisfying our quality criteria. We therefore compared our data with the data set published by Cinková and Policht (2014) who recorded Pant calls from 14 animals in an isolation context, thus obtaining better signal-to-noise ratios.

Our results partly support the acoustic structure hypothesis because the only harmonic call, the Grunt, is more individually distinctive than the Hiss, containing formant-like structures, followed by the noisy Snort. Even though we measured all parameters commonly used in the literature, it could be that



other parameters may be better suited to measure individual signatures in Snorts and Hisses. Nevertheless, our findings are in accordance with the assumption that narrow-band harmonic calls are better suited for coding sender identity than broadband noisy calls (Yin and McCowan 2004; Leliveld et al. 2011). Thus, the dense energy distribution by the narrow-spaced harmonics favors the projection of formants. However, the Pant showed the highest level of individuality (Cinková and Policht 2014) although it has a broadband acoustic structure without fundamental frequency. The analysis of Cinková and Policht (2014) showed that sender identity was mainly encoded by temporal parameters such as the duration or the number of elements (Cinková and Policht 2014), whereas in our analysis temporal parameters were not important. Although individual differences based on frequency characteristics have been found in various mammals (e.g., Bastian and Schmidt 2008; Leliveld et al. 2011; Mumm et al. 2014), identity coding based on temporal features has also been described for some species (e.g., Shapiro 2006, 2010). In calls consisting of bouts of repetitive elements, the number of units per call and thereby the call duration are primarily dependent on individual lung capacity and the control of the air flow speed (Fitch and Hauser 1995). Individual-specific information based on the variance in temporal features, such as duration or temporal arrangement of frequency elements, has been found in bats (Brown 1976; Masters et al. 1995) and nonhuman primates (Lemasson et al. 2010; Bouchet et al. 2012). Temporal variation often is related to differences in the arousal state of an animal, which affects the mammalian vocal production mechanism (Kirchhübel et al. 2011). Arousal and anxiety are known to reduce saliva production and to increase muscle tension in mammals (Kirchhübel et al. 2011). In dwarf mongooses (*Helogale parvula*), it was shown that calls emitted during high-arousal situations show less individual variation as compared to calls emitted during low-arousal states (Rubow et al. 2018), whereas in domestic kittens (*Felis catus*) no difference in the level of individual distinctiveness was found between high- and low-arousal contexts (Scheumann et al. 2012). The southern white rhinoceros uttered two call types during aggressive interactions. Hisses acted as a first warning signal, whereas Grunts were a more powerful warning signal indicating a more pronounced motivation to fight (Policht et al. 2008). The Grunts thus may signal a higher level of arousal, yet they exhibited more pronounced individual differences compared to Hisses produced at a lower arousal level.

Our findings best support the social function hypothesis, as the level of individual distinctiveness increases from Snort, to Hiss, to Grunt, to Pant. Thus, the lowest level of individual distinctiveness was found in the Snort, which often is used in nonsocial situations such as feeding, resting, or locomotion (Policht et al. 2008; Linn et al. 2018). On the other hand, calls with a strong intragroup social function have high levels of acoustic variability, potentially allowing callers to convey a range of individual-specific information. These calls play a major role in affiliative (Pant) and agonistic interactions (Grunt and Hiss) with a specific social partner (Policht et al. 2008;

Linn et al. 2018). Individual distinctiveness was highest in Pans functioning as a contact call during socio-positive interactions as compared to Grunts and Hisses uttered during socio-negative interactions. Pans are produced mainly in two distinct social contexts. First, white rhinoceroses emit Pans during social cohesive interactions as a kind of “greeting” when approaching or following a conspecific or a group of individuals (Policht et al. 2008; Linn et al. 2018). Moreover, Pans play an important role in the mating behavior of white rhinoceroses as bulls emit this call during mate guarding and mating encounters (Owen-Smith 1973; Policht et al. 2008). In both contexts it may be essential for a white rhinoceros to assess the identity of the caller, providing information about physiological and morphological attributes such as body size, dominance rank, or hormonal state. There is strong male–male competition and female mate choice in white rhinoceroses (Kretzschmar et al. 2020) and males use acoustic cues to gather information about rivals (Cinková and Shrader 2020).

Our finding is in agreement with the expansion of the social function hypothesis by Lemasson and Hausberger (2011) which assumes that individual distinctiveness is higher in calls related to affiliative contexts as compared to calls related to agonistic contexts. Our results agree with other studies showing that individual distinctiveness increases with increasing affiliative social value of a call type (Appendix I; e.g., Lemasson and Hausberger 2011; Bouchet et al. 2013; Ancillotto and Russo 2016). Selection may have favored more individually distinct calls in situations such as social cohesion in which vocal recognition is useful. On the other hand, in situations where context (e.g., aggression) is of greater importance than caller identity, selection will favor the suppression of individual vocal distinctiveness to reduce signal ambiguity and facilitate a rapid response by receivers (Shapiro 2010). From this point of view, it makes sense that evolution has favored individual distinctiveness in a contact and mating call, such as the Pant, providing signalers with benefits, but less so in aggressive calls such as the Grunt or the Hiss. Nevertheless, in agonistic contexts it may be important to estimate the potential outcome of an agonistic interaction by assessing the identity of the opponent, which may account for the individual distinctiveness in Grunt calls. For example, in northern elephant seals (*Mirounga angustirostris*), individuals remember the fighting abilities of potential opponents based on individual acoustic signatures (Casey et al. 2015).

Due to the fact that previous studies have used a wide variety of statistical methods to analyze and compare individual distinctiveness in vocalizations of different mammalian species (Appendix I) and that the published results thus may have been influenced by the methods used, we compared the three most prominent methods used in the literature when analyzing our data set to compare the level of individual distinctiveness between different call types: DFA, potential for individual identity coding (PIC), and the information criterion ( $H_s$ ). Comparing the results of the DFA based on subject balanced and unbalanced data sets (Table 7), we confirmed that the classification accuracy is influenced by the number of individuals included in the analyses (e.g., Beecher 1989).

However, comparing the balanced and unbalanced data sets, the kappa tests led to similar values, although they resulted in two different classification levels for Hisses (total data set: slight; balanced data set: fair). The overall PIC and the  $H_s$  varied only slightly between the balanced and unbalanced data sets (Table 7). The kappa test and the  $H_s$  provided a similar interpretation for individual distinctiveness. The  $H_s$  were below 1 for Snorts and Hiss in the balanced data set, suggesting that only a low number of individuals can be potentially discriminated (Searby et al. 2004), which is in agreement with the slight to fair agreement found by the kappa test. However, the overall PIC was above 1 suggesting a potential for identity coding. Nevertheless, the three measurements showed a comparable trend in the degree of individuality and the information criterion  $H_s$  turned out to be a reliable method when comparing different samples across studies as suggested by Beecher (1989) and Bouchet et al. (2013).

Observations made in this study have been carried out on southern white rhinoceroses in a zoo environment, which cannot completely reflect the natural situation. However, as individual signatures are related to the morphology of the individual, especially of the vocal tract, they should be independent from housing conditions or the social environment. Nevertheless, studies on wild southern white rhinoceroses would be important to clarify the role of vocal identity coding in social interactions under natural conditions. Moreover, studies on additional rhinoceros species are needed to clarify the impact of social system on the degree of individual distinctiveness. To date, comparative data are only available for a single species, the solitarily living black rhinoceros (*Diceros bicornis*). Budde and Klump (2003) showed that begging calls of captive adult black rhinoceroses carry individual signatures. Begging calls often are produced toward keepers (personal observation) but due to our limited knowledge on the vocal repertoire of black rhinoceroses, the function in conspecific communication is not yet understood. The begging call of the adult black rhinoceros corresponds to Whines produced by infants and subadults of the white rhinoceros. Further research is necessary to clarify whether the different socioecological niches, i.e., solitary, forest-dwelling versus semisocial, savanna-living (for discussion, see Linn et al. 2018), may account for these differences in vocalization behavior.

To sum up, our findings for the southern white rhinoceros suggest that the context of social interactions plays a major role in the evolution of individual distinctiveness in vocalizations. However, due to the fact that Grunts and Hisses are emitted in comparable contexts, namely during aggressive interactions, but differ in their acoustic structure and individual distinctiveness, it has to be assumed that not only the type of social interaction but also vocal production mechanisms influence the degree of individuality in different call types. Further, it still is unclear whether conspecifics use the different call types to discriminate and recognize different individuals. Cinková and Policht (2016) showed that southern white rhinoceroses are able to extract information about the sex and the species of the sender when listening to Pant calls. The present data can be

used for further playback experiments, which are necessary to gain a clear understanding of the role of individual signatures in the noisy calls of the southern white rhinoceros and its capacity to discriminate between individuals.

## ACKNOWLEDGMENTS

We thank the Serengeti-Park Hodenhagen, the Dortmund Zoo, the Augsburg Zoo, the Erfurt Zoo, the Gelsenkirchen Zoo, and the Osnabrück Zoo, for the possibility to study their rhinoceroses and for their hospitality. We particularly thank M. Becker, D. Lahn, T. Lipp, S. Zech, T. Risch, W.-D. Gürtler, Prof. Dr. M. Boer, and all the rhinoceros keepers for their patience and support during data collection. Furthermore, we acknowledge R. Frey for sending us information about vocal tract length in rhinoceroses. We dedicate this paper to Prof. Dr. E. Zimmermann: we miss the fruitful discussions with her. This research was funded by German Research Foundation (DFG; Projekt ID: SCHE 1927/2-1); Serengeti-Park-Stiftung (MS; <http://www.serengeti-park-stiftung.de/>); Studienstiftung des Deutschen Volkes (SNL; <https://www.studienstiftung.de/>).

## SUPPLEMENTARY DATA

Supplementary data are available at *Journal of Mammalogy* online.

**Supplementary Data SD1.**—Original and filtered sonograms of the three call types Grunt, Hiss, and Snort.

## LITERATURE CITED

- ALTMANN, J. 1974. Observational study of behavior: sampling methods. *Behaviour* 49:227–267.
- ANCILLOTTO, L., AND D. RUSSO. 2016. Individual vs. non-individual acoustic signalling in African woodland dormice (*Graphiurus murinus*). *Mammalian Biology* 81:410–414.
- AUGUST, P. V., AND J. G. T. ANDERSON. 1987. Mammal sounds and motivation-structural rules: a test of the hypothesis. *Journal of Mammalogy* 68:1–9.
- AVISOF. 2018. Avisoft-SAS Lab Pro – sound analysis and synthesis laboratory. Version 5.2.12. Avisoft Bioacoustics. Glienicke, Germany.
- BAKER, M. C., AND D. M. LOGUE. 2007. A comparison of three noise reduction procedures applied to bird vocal signals. *Journal of Field Ornithology* 78:240–253.
- BASTIAN, A., AND S. SCHMIDT. 2008. Affect cues in vocalizations of the bat, *Megaderma lyra*, during agonistic interactions. *The Journal of the Acoustical Society of America* 124:598–608.
- BATSOUND PRO. 2013. Batsound – sound analysis. Version 4.1. Pettersson Elektronik AB. Uppsala, Sweden.
- BEECHER, M. D. 1989. Signaling systems for individual recognition – an information-theory approach. *Animal Behaviour* 38:248–261.
- BELIN, P., S. FECTEAU, AND C. BÉDARD. 2004. Thinking the voice: neural correlates of voice perception. *Trends in Cognitive Sciences* 8:129–135.
- BOERSMA, P. 1993. Accurate short-term analysis of the fundamental frequency and the harmonics-to-noise ratio of a sampled sound. *Proceedings of the Institute of Phonetic Sciences* 17:97–110.
- BOERSMA, P. 2001. Praat, a system for doing phonetics by computer. *Glott International* 5:341–345.

- BOUCHET, H., C. BLOIS-HEULIN, AND A. LEMASSON. 2013. Social complexity parallels vocal complexity: a comparison of three non-human primate species. *Frontiers in Psychology* 4:390.
- BOUCHET, H., C. BLOIS-HEULIN, A. S. PELLIER, K. ZUBERBÜHLER, AND A. LEMASSON. 2012. Acoustic variability and individual distinctiveness in the vocal repertoire of red-capped mangabeys (*Cercocebus torquatus*). *Journal of Comparative Psychology* 126:45–56.
- BROWN, P. E. 1976. Echolocation ontogeny in pallid bat (*Antrozous pallidus*). *Journal of the Acoustical Society of America* 60:S3–S4.
- BROWN, J. L., A. C. BELLEM, M. FOURAKER, D. E. WILDT, AND T. L. ROTH. 2001. Comparative analysis of gonadal and adrenal activity in the black and white rhinoceros in North America by noninvasive endocrine monitoring. *Zoo Biology* 20:463–486.
- BUDDE, C., AND G. M. KLUMP. 2003. Vocal repertoire of the black rhino *Diceros bicornis* ssp. and possibilities of individual identification. *Mammalian Biology* 68:42–47.
- CASEY, C., I. CHARRIER, N. MATHEVON, AND C. REICHMUTH. 2015. Rival assessment among northern elephant seals: evidence of associative learning during male-male contests. *Royal Society Open Science* 2:150228.
- CHARLTON, B. D., ET AL. 2011. Cues to body size in the formant spacing of male koala (*Phascolarctos cinereus*) bellows: honesty in an exaggerated trait. *The Journal of Experimental Biology* 214:3414–3422.
- CHARRIER, I., P. JOUVENTIN, N. MATHEVON, AND T. AUBIN. 2001. Individual identity coding depends on call type in the South Polar skua *Catharacta macormicki*. *Polar Biology* 24:378–382.
- CINKOVÁ, I., AND R. POLICHT. 2014. Contact calls of the northern and southern white rhinoceros allow for individual and species identification. *PLoS ONE* 9:e98475.
- CINKOVÁ, I., AND R. POLICHT. 2016. Sex and species recognition by wild male southern white rhinoceros using contact pant calls. *Animal Cognition* 19:375–386.
- CINKOVÁ, I., AND A. M. SHRADER. 2020. Rival assessment by territorial southern white rhinoceros males via eavesdropping on the contact and courtship calls. *Animal Behaviour* 166:19–31.
- DÉAUX, É. C., I. CHARRIER, AND J. A. CLARKE. 2016. The bark, the howl and the bark-howl: identity cues in dingoes' multicomponent calls. *Behavioural Processes* 129:94–100.
- EHRET, G. 2006. Common rules of communication sound perception. Pp. 85–114 in *Behaviour and neurodynamics for auditory communication* (J. Kanwal and G. Ehret, eds.). Cambridge University Press. Cambridge, United Kingdom.
- FANT, G. 1960. Acoustic theory of speech production. With calculations based on X-ray studies of Russian articulations. Mouton & Co. The Hague, The Netherlands.
- FITCH, W. T. 1997. Vocal tract length and formant frequency dispersion correlate with body size in rhesus macaques. *The Journal of the Acoustical Society of America* 102:1213–1222.
- FITCH, W. T. 2010. *The evolution of language*. Cambridge University Press. Cambridge, Massachusetts.
- FITCH, W. T., AND M. D. HAUSER. 1995. Vocal production in non-human primates: acoustics, physiology, and functional constraints on “honest” advertisement. *American Journal of Primatology* 37:191–219.
- GAMBA, M. 2014. Vocal tract-related cues across human and non-human signals. *Reti, Saperi, Linguaggi* 1:49–68.
- HACCOU, P., AND E. MELIS. 1994. *Statistical analysis of behavioural data*. Oxford University Press. New York, New York.
- HUTCHINS, M., AND M. D. KREGER. 2006. Rhinoceros behaviour: implications for captive management and conservation. *International Zoo Yearbook* 40:150–173.
- JENIKEJEW, J., B. CHAIGNON, S. LINN, AND M. SCHEUMANN. 2020. Proximity-based vocal networks reveal social relationships in the Southern white rhinoceros. *Scientific Reports* 10:15104.
- KESSLER, S. E., M. SCHEUMANN, L. T. NASH, AND E. ZIMMERMANN. 2012. Paternal kin recognition in the high frequency/ultrasonic range in a solitary foraging mammal. *BMC Ecology* 12:26.
- KIRCHHÜBEL, C., D. M. HOWARD, AND A. W. STEDMON. 2011. Acoustic correlates of speech when under stress: research, methods and future directions. *International Journal of Speech, Language & the Law* 18:75–98.
- KNÖRNSCHILD, M., A. A. FERNANDEZ, AND M. NAGY. 2019. Vocal information and the navigation of social decisions in bats: is social complexity linked to vocal complexity? *Functional Ecology* 34:322–331.
- KRETZSCHMAR, P., ET AL. 2020. Mate choice, reproductive success and inbreeding in white rhinoceros: new insights for conservation management. *Evolutionary Applications* 13:700–715.
- LANDIS, J. R., AND G. G. KOCH. 1977. The measurement of observer agreement for categorical data. *Biometrics* 33:159–174.
- LELIVELD, L. M., M. SCHEUMANN, AND E. ZIMMERMANN. 2011. Acoustic correlates of individuality in the vocal repertoire of a nocturnal primate (*Microcebus murinus*). *The Journal of the Acoustical Society of America* 129:2278–2288.
- LEMASSON, A., AND M. HAUSBERGER. 2011. Acoustic variability and social significance of calls in female Campbell's monkeys (*Cercopithecus campbelli campbelli*). *The Journal of the Acoustical Society of America* 129:3341–3352.
- LEMASSON, A., K. OUATTARA, H. BOUCHET, AND K. ZUBERBÜHLER. 2010. Speed of call delivery is related to context and caller identity in Campbell's monkey males. *Die Naturwissenschaften* 97:1023–1027.
- LESSELLS, C. M., AND P. T. BOAG. 1987. Unrepeatable repeatabilities: a common mistake. *The Auk* 104:116–121.
- LIEBERMAN, P., AND S. E. BLUMSTEIN. 1988. *Speech physiology, speech perception, and acoustic phonetics*. Cambridge University Press. Cambridge, Massachusetts.
- LIGOUT, S., F. SEBE, AND R. H. PORTER. 2004. Vocal discrimination of kin and non-kin agetates among lambs. *Behaviour* 141:355–369.
- LINN, S. N., M. BOEER, AND M. SCHEUMANN. 2018. First insights into the vocal repertoire of infant and juvenile Southern white rhinoceros. *PLoS ONE* 13:e0192166.
- LIU, R. C., K. D. MILLER, M. M. MERZENICH, AND C. E. SCHREINER. 2003. Acoustic variability and distinguishability among mouse ultrasound vocalizations. *The Journal of the Acoustical Society of America* 114:3412–3422.
- MACIEJ, P., J. FISCHER, AND K. HAMMERSCHMIDT. 2011. Transmission characteristics of primate vocalizations: implications for acoustic analyses. *PLoS ONE* 6:e23015.
- MANSER, M. B. 2001. The acoustic structure of suricates' alarm calls varies with predator type and the level of response urgency. *Proceedings of the Royal Society of London, B. Biological Sciences* 268:2315–2324.
- MASTERS, W. M., K. A. S. RAVER, AND K. A. KAZIAL. 1995. Sonar signals of big brown bats, *Eptesicus fuscus*, contain information about individual identity, age and family affiliation. *Animal Behaviour* 50:1243–1260.
- MATLAB. 2018. *Matlab. Version R2018a 9.4.0.813654. The MathWorks, Inc. Natick, Massachusetts.*



- MITANI, J. C., J. GROS-LOUIS, AND J. M. MACEDONIA. 1996. Selection for acoustic individuality within the vocal repertoire of wild chimpanzees. *International Journal of Primatology* 17:569–583.
- MUGGENHALER, E. K., J. W. STOUGHTON, AND J. C. DANIEL. 1993. Infrasound from the Rhinocerotidae. Pp. 136–139 in *Rhinoceros biology and conservation. Proceedings of an international conference on rhinoceros, 9–11 May 1991* (O. A. Ryder, ed.). Zoological Society of San Diego. San Diego, California.
- MÜLLER, C. A., AND M. B. MANSER. 2008. Mutual recognition of pups and providers in the cooperatively breeding banded mongoose. *Animal Behaviour* 75:1683–1692.
- MUMM, C. A. S., M. C. URRUTIA, AND M. KNÖRNSCHILD. 2014. Vocal individuality in cohesion calls of giant otters, *Pteronura brasiliensis*. *Animal Behaviour* 88:243–252.
- NAIR, S., R. BALAKRISHNAN, C. S. SEELAMANTULA, AND R. SUKUMAR. 2009. Vocalizations of wild Asian elephants (*Elephas maximus*): structural classification and social context. *The Journal of the Acoustical Society of America* 126:2768–2778.
- OWEN-SMITH, N. O. 1973. The behavioural ecology of the white rhinoceros. Ph.D. dissertation, University of Wisconsin. Madison, Wisconsin.
- PATTON, M., ET AL. 1999. Reproductive cycle length and pregnancy in the southern white rhinoceros (*Ceratotherium simum simum*) as determined by fecal pregnane analysis and observations of mating behavior. *Zoo Biology* 18:111–127.
- PECKRE, L., P. M. KAPPELER, AND C. FICHTEL. 2019. Clarifying and expanding the social complexity hypothesis for communicative complexity. *Behavioral Ecology and Sociobiology* 73:11.
- PEFFERLE, D., AND J. FISCHER. 2006. Sounds and size: identification of acoustic variables that reflect body size in hamadryas baboons, *Papio hamadryas*. *Animal Behaviour* 72:43–51.
- PHILLIPS, A. V., AND I. STIRLING. 2000. Vocal individuality in mother and pup South American fur seals, *Arctocephalus australis*. *Marine Mammal Science* 16:592–616.
- PLAPOUS, C., C. MARRO, AND P. SCALART. 2005. Speech enhancement using harmonic regeneration. *Proceedings of the IEEE International Conference on Acoustics, Speech, and Signal Processing* 1:1–157.
- PLAPOUS, C., C. MARRO, AND P. SCALART. 2006. Improved signal-to-noise ratio estimation for speech enhancement. *Proceedings of the IEEE Transactions on Audio Speech and Language Processing* 14:2098–2108.
- PLOTSKY, K., D. RENDALL, T. RIEDE, AND K. CHASE. 2013. Radiographic analysis of vocal tract length and its relation to overall body size in two canid species. *Journal of Zoology* 291:76–86.
- POLICHT, R., K. TOMASOVA, D. HOLECKOVA, AND D. FRYNTA. 2008. The vocal repertoire in Northern white rhinoceros *Ceratotherium simum cottoni* as recorded in the last surviving herd. *Bioacoustics* 18:69–96.
- PRAAT. 2018. Praat doing phonetics by computer. Version 6.0.42. University of Amsterdam. Amsterdam, The Netherlands. [www.praat.org](http://www.praat.org). Accessed 14 September 2018.
- RENDALL, D., H. NOTMAN, AND M. J. OWREN. 2009. Asymmetries in the individual distinctiveness and maternal recognition of infant contact calls and distress screams in baboons. *The Journal of the Acoustical Society of America* 125:1792–1805.
- RENDALL, D., M. J. OWREN, AND P. S. RODMAN. 1998. The role of vocal tract filtering in identity cueing in rhesus monkey (*Macaca mulatta*) vocalizations. *The Journal of the Acoustical Society of America* 103:602–614.
- ROBISSON, P., T. AUBIN, AND J.-C. BREMOD. 1993. Individuality in the voice of the emperor penguin *Aptenodytes forsteri*: adaptation to a noisy environment. *Ethology* 94:279–290.
- ROTH, T. L. 2006. A review of the reproductive physiology of rhinoceros species in captivity. *International Zoo Yearbook* 40:130–143.
- RSTUDIO TEAM. 2016. RStudio: integrated development environment for R. Version 1.1.447. RStudio Inc. Boston, Massachusetts. [www.rstudio.com](http://www.rstudio.com). Accessed 12 November 2019.
- RUBOW, J., M. I. CHERRY, AND L. L. SHARPE. 2018. A comparison of individual distinctiveness in three vocalizations of the dwarf mongoose (*Helogale parvula*). *Ethology* 124:45–53.
- SALMI, R., K. HAMMERSCHMIDT, AND D. M. DORAN-SHEEHY. 2014. Individual distinctiveness in call types of wild western female gorillas. *PLoS ONE* 9:e101940.
- SCHEHKA, S., AND E. ZIMMERMANN. 2009. Acoustic features to arousal and identity in disturbance calls of tree shrews (*Tupaia belangeri*). *Behavioural Brain Research* 203:223–231.
- SCHERER, K. R. 1989. Vocal correlates of emotional arousal and affective disturbance. Pp. 165–197 in *Handbook of psychophysiology: emotion and social behavior* (H. Wagner and A. Manstead, eds.). Wiley. London, United Kingdom.
- SCHEUMANN, M., A. E. ROSER, W. KONERDING, E. BLEICH, H. J. HEDRICH, AND E. ZIMMERMANN. 2012. Vocal correlates of sender-identity and arousal in the isolation calls of domestic kitten (*Felis silvestris catus*). *Frontiers in Zoology* 9:36.
- SCHEUMANN, M., E. ZIMMERMANN, AND G. DEICHSEL. 2007. Context-specific calls signal infants' needs in a strepsirrhine primate, the gray mouse lemur (*Microcebus murinus*). *Developmental Psychobiology* 49:708–718.
- SEARBY, A., P. JOUVENTIN, AND T. AUBIN. 2004. Acoustic recognition in macaroni penguins: an original signature system. *Animal Behaviour* 67:615–625.
- SÉBÉ, F., J. DUBOSCQ, T. AUBIN, S. LIGOUT, AND P. POINDRON. 2010. Early vocal recognition of mother by lambs: contribution of low- and high-frequency vocalizations. *Animal Behaviour* 79:1055–1066.
- SEYFARTH, R. M., D. L. CHENEY, AND P. MARLER. 1980. Vervet monkey alarm calls: semantic communication in a free-ranging primate. *Animal Behaviour* 28:1070–1094.
- SHAPIRO, A. D. 2006. Preliminary evidence for signature vocalizations among free-ranging narwhals (*Monodon monoceros*). *The Journal of the Acoustical Society of America* 120:1695–1705.
- SHAPIRO, A. D. 2010. Recognition of individuals within the social group: signature vocalizations. Pp. 495–503 in *Handbook of mammalian vocalization* (S. M. Brudzynski, eds.). Elsevier B.V. London, United Kingdom.
- SHRADER, A. M., AND N. OWEN-SMITH. 2002. The role of companionship in the dispersal of white rhinoceroses (*Ceratotherium simum*). *Behavioral Ecology and Sociobiology* 52:255–261.
- SIKES, R. S., AND THE ANIMAL CARE AND USE COMMITTEE OF THE AMERICAN SOCIETY OF MAMMALOGISTS. 2016. 2016 Guidelines of the American Society of Mammalogists for the use of wild mammals in research and education. *Journal of Mammalogy* 97:663–688.
- SNOWDON, C. T., A. M. ELWSON, AND R. S. ROUSH. 1997. Social influences on vocal development in New World primates. Pp. 234–248 in *Social influences on vocal development* (C. T. Snowdon and M. Hausberger, eds.). Cambridge University Press. New York.
- STOEGER, A. S., AND A. BAOTIC. 2016. Information content and acoustic structure of male African elephant social rumbles. *Scientific Reports* 6:27585.
- STOEGER, A. S., G. HEILMANN, M. ZEPPELZAUER, A. GANSWINDT, S. HENSMAN, AND B. D. CHARLTON. 2012. Visualizing sound emission of elephant vocalizations: evidence for two rumble production types. *PLoS One*. 7:e48907. doi:10.1371/journal.pone.0048907. Epub 2012 Nov 14. PMID: 23155427; PMCID: PMC3498347.

- TAYLOR, A. M., AND D. REBY. 2010. The contribution of source-filter theory to mammal vocal communication research. *Journal of Zoology* 280:221–236.
- TORRIANI, M. V., E. VANNONI, AND A. G. McELIGOTT. 2006. Mother-young recognition in an ungulate hider species: a unidirectional process. *The American Naturalist* 168:412–420.
- WILEY, R. H., AND D. G. RICHARDS. 1978. Physical constraints on acoustic communication in the atmosphere: implications for the evolution of animal vocalizations. *Behavioral Ecology and Sociobiology* 3:69–94.
- WITTIG, R. M., C. CROCKFORD, R. M. SEYFARTH, AND D. L. CHENEY. 2007. Vocal alliances in Chacma baboons (*Papio hamadryas ursinus*). *Behavioral Ecology and Sociobiology* 61:899–909.
- YIN, S., AND B. McCOWAN. 2004. Barking in domestic dogs: context specificity and individual identification. *Animal Behaviour* 68:343–355.

*Submitted 24 February 2020. Accepted 19 January 2021.*

*Associate Editor was Rochelle Constantine.*

APPENDIX I

Overview of studies that investigated individual distinctiveness among different call types within a species (including information on the acoustic structure of the respective call types, the context in which they are given, and typical distance at which they are exchanged) and results for acoustic variability and individual distinctiveness based on the different hypotheses. SF = social function hypothesis, predicts that calls uttered in directed interaction have a higher level of individual distinctiveness than calls uttered in general contexts and that calls uttered in affiliative social context have a higher level of individual distinctiveness than calls uttered in intermediate distances, and lowest for call types uttered at low distance; AC = acoustic structure hypothesis, predicts that the level of individual distinctiveness decreased from tonal to noisy calls with harmonic components (mixed) to noisy call types. PIC = potential for individual identity coding, H<sub>s</sub> = information criterion, DFA = discriminant function analysis, + = equal number of individuals, CV = coefficient of variance, cluster = cluster analysis, NO = results do not support the hypothesis, YES = results support the hypothesis, PARTLY = results partly support the hypothesis, - = not testable with the data set, ?? = no information available in the paper.

Species Reference	Call type	Context	Directionality - context	Distance	Structure	Method	Result	Hypotheses and predictions		
								SF	DC	AS
<b>PRIMATES</b>										
Western gorilla ( <i>Gorilla gorilla</i> ) Salmi et al. 2014	Grunts Copulation grunt Hiss grunt Scream	forage, rest, travel sexual interaction within group aggression escalated within-group aggression	general directed directed - agonistic directed - agonistic	close close close close	noisy noisy noisy mixed	PIC, DFA	equal	NO	NO	NO
Chimpanzee ( <i>Pan troglodytes</i> ) Mitani et al. 1996	Hum Hoot series Pant hoot Pant grunt	foraging Isolation, separation group cohesion greeting	general directed directed - affiliative directed - affiliative	intermediate far far close	tonal tonal tonal noisy	CV	Pant hoot > Pant grunt	-	YES	YES
Chaema baboon ( <i>Papio hamadryas ursinus</i> ) Rendall et al. 2009	Contact call Distress scream	Isolation, separation aggressive interaction to recruit help	directed directed - agonistic	far ??	tonal mixed	CV, DFA	Contact call > Distress scream	YES	-	YES
Rhesus monkey ( <i>Macaca mulatta</i> ) Rendall et al. 1998	Coo Grunt Scream	contact affiliative interaction aggressive	directed directed - affiliative directed - agonistic	far close ??	tonal noisy mixed	CV, ANOVA	Coo > Grunts > Scream	YES	YES	PART.
Campbell's monkey ( <i>Cercopithecus campbelli</i> ) Lemasson and Hausberger 2011; Bouchet et al. 2013	Repetitive rapid chevron (RRC) Repetitive rapid ascending (RRA) Single trill (ST) Long single harmonic (SH) Long low-pitched single harmonic (CH)	alarm, disturbance contact cohesion affiliative contexts	general directed directed - affiliative directed - affiliative	?? ?? ?? ??	mixed tonal tonal mixed	CV, PIC, H <sub>s</sub>	CH > SH > ST > RRA > RRC	YES	-	PART.
De Brazza's monkey ( <i>Cercopithecus neglectus</i> ) Bouchet et al. 2013	Tek+ Wrr+ ON	alarm aggression contact	general directed - agonistic directed	?? ?? ??	noisy noisy tonal	H <sub>s</sub>	ON > Tek+ > Wrr+	PART.	-	YES
Red-capped mangabey ( <i>Cercocebus torquatus</i> ) Bouchet et al. 2012, 2013	Whoop-Gobble WaHoo Ti+(uh). A+(uh) un+(uh) Ro+(uh)	loud call alarm food aggression, Hiss contact	general general general directed - agonistic directed	far far short short short	tonal mixed mixed mixed tonal	PIC, H <sub>s</sub>	Ro+(uh) = Un+(uh) > Whoop-Gobble = WaHoo > Ti+(uh) = A+(Uh)	YES	NO	NO



## Appendix I. Continued

Species Reference	Call type	Context	Directionality - context	Distance	Structure	Method	Result	Hypotheses and predictions		
								SF	DC	AS
Gray mouse lemur ( <i>Microcebus murinus</i> ) Leiveld et al. 2011	Trill Short Whistle Tsak Grunt	social cohesion general disturbance aggression defensive Hiss against predator	directed - affiliative general directed - agonistic general	far far close close	tonal tonal tonal noisy	DFA+	Trill = Short whistle > Tsak > Grunt	PART. YES	YES	YES
<b>CARNIVORA</b>										
Dingo ( <i>Canis dingo</i> ) Déaux et al. 2016	Howl Bark	low arousal high arousal	directed directed	?? ??	tonal noisy	PIC, DFA	Howl > Bark	-	-	YES
Dwarf mongoose ( <i>Helogale parvula</i> ) Rubow et al. 2018	Contact call Snake call Isolation call	intragroup social call alarm call Isolation, separation	directed - affiliative general directed	close intermediate far	tonal tonal tonal	PIC, DFA+	Isolation call > Contact > Snake call	YES	PART.	-
Domestic dog ( <i>Canis familiaris</i> ) Yin and McCowan 2004	Disturbance bark Isolation bark Play bark	disturbance isolation social interaction	general directed directed - affiliative	far mixed close	noisy tonal tonal	DFA	Isolation bark = Play bark > Disturbance bark	YES	NO	YES
Giant otter ( <i>Pteronura brasiliensis</i> ) Mumm et al. 2014	Contact call Hum	social cohesion group movements	directed - affiliative general	far close	tonal noisy	DFA+	Contact call > Hum	YES	YES	YES
RODENTIA African woodland dormouse ( <i>Graphiurus murinus</i> ) Ancillotto and Russo 2016	Type a Type d	contact aggression	directed directed - agonistic	far close	tonal tonal	DFA+	Type a > Type d	YES	YES	-
BATS Indian false vampire bat ( <i>Megaderma lyra</i> ) Bastian and Schmidt 2008	Aggression calls Response calls	aggression agonistic context	directed - agonistic directed - agonistic	close close	noisy tonal	cluster	Response call > Aggression call	-	-	YES