

## **Correct identification and biosecurity decision-making: Two species instead of one in *Aceria genistae* complex (Acari: Eriophyidae) in New Zealand**

Authors: Xue, Xiao-Feng, Han, Xiao, and Zhang, Zhi-Qiang

Source: Systematic and Applied Acarology, 20(1) : 71-86

Published By: Systematic and Applied Acarology Society

URL: <https://doi.org/10.11158/saa.20.1.8>

---

BioOne Complete ([complete.BioOne.org](https://complete.BioOne.org)) is a full-text database of 200 subscribed and open-access titles in the biological, ecological, and environmental sciences published by nonprofit societies, associations, museums, institutions, and presses.

Your use of this PDF, the BioOne Complete website, and all posted and associated content indicates your acceptance of BioOne's Terms of Use, available at [www.bioone.org/terms-of-use](https://www.bioone.org/terms-of-use).

Usage of BioOne Complete content is strictly limited to personal, educational, and non-commercial use. Commercial inquiries or rights and permissions requests should be directed to the individual publisher as copyright holder.

---

BioOne sees sustainable scholarly publishing as an inherently collaborative enterprise connecting authors, nonprofit publishers, academic institutions, research libraries, and research funders in the common goal of maximizing access to critical research.

## Correct identification and biosecurity decision-making: Two species instead of one in *Aceria genistae* complex (Acari: Eriophyidae) in New Zealand

XIAO-FENG XUE<sup>1,3</sup>, XIAO HAN<sup>1</sup> & ZHI-QIANG ZHANG<sup>2,3</sup>

<sup>1</sup> Department of Entomology, Nanjing Agricultural University, Nanjing, Jiangsu 210095, China; X.-F. Xue and X. Han are co-first authors and equally contributed to this paper

<sup>2</sup> Landcare Research, 231 Morrin Road, St. Johns, Auckland 1072, New Zealand and School of Biological Sciences, University of Auckland, Tamaki Campus, Auckland, New Zealand

<sup>3</sup> Correspondent authors: zhangz@landcareresearch.co.nz, xfxue@njau.edu.cn

### Abstract

In this paper, *Aceria genistae* (Nalepa) on scotch broom (*Cytisus scoparius*) from Mandagout, France is redescribed and a neotype is designated. A gall mite on *Ulex europaeus* L. (Fabaceae) in New Zealand, previously mis-identified by David Manson as *A. genistae* is here redescribed as a new species, *Aceria davidmansonii* sp. nov. Taxonomic and nomenclatural history of *A. genistae* is reviewed.

**Key words:** eriophyoid mites, new species, taxonomy, Scotch broom, gorse

### Introduction

Biosecurity is becoming an important issue for many countries in the world as movements of organisms across countries and regions are increasing. One of the foremost tasks of biosecurity workers is to minimize the risk of potential damage that may be caused by the accidental or intentional movement of exotic species across borders. Taxonomic knowledge of the species concerned is essential for determining if the species being moved is already present in the home country or if it is an exotic species. Incorrect identification can result in wrong decision-making. Such is the case for a tiny eriophyoid mite *Aceria genistae* (Nalepa 1892).

The Eriophyoidea is a large mite superfamily with over 4,000 described species (Zhang *et al.* 2011). The genus *Aceria* was established by Keifer (1944) based on the type species of *Eriophyes tulipae* Keifer, 1938. It is a member of the family Eriophyidae. *Aceria* is the biggest genus in the Eriophyoidea and included over 900 species world-wide up to 2003 (Amrine *et al.* 2003). Most species of *Aceria* are extremely host-specific and restricted to a single species of host plant, some species are known to feed on multiple species within the same plant genus, and exceptionally some species attack related plant genera (Lindquist *et al.* 1996a).

*Aceria genistae* has become an important species of *Aceria* because of its potential as a biological control agent against the Scotch broom (*Cytisus scoparius*) in Australia and New Zealand (Syrett *et al.* 1999). The world catalogue (Amrine & Stasny 1994) lists this species from three species of *Cytisus*, five species of *Genista* and two species of *Ulex* —all members of the tribe Genisteae— an unusual wide range of host species and genera for *Aceria* species. This has been followed by many others, including biocontrol workers (e.g. Chan & Turner 1998). Syrett *et al.* (1999) suspected that the gall-forming mite “*Aceria genistae*” is probably a complex of sibling species, each restricted to

a single species of host plant. Castagnoli (1978) showed in Italy that mites infesting the Spanish broom (*Spartium junceum*) are a separate species, *Aceria spartii* (Canestrini 1893), from those on Scotch broom. Likewise, mites identified as “*A. genistae*” from gorse in New Zealand (Manson 1989), caused galls on gorse (*Ulex europaeus*) but not on Scotch broom (Manson 1989), and tests with *A. genistae* collected from Scotch broom in France produced no galls on gorse (Sagliocco *et al.* 2013). Chan & Turner (1998) reported *A. genistae* from both gorse and French broom (*G. monspessulana*) in California, USA, but also discussed the possibility of a species complex (we will report on our results from studies of US specimens in a forthcoming paper). The problem of taxonomic identities of the mite species on different host plant species requires further studies.

This paper was initiated in 2008 by an identification request to Zhang from Quentin Paynter (Landcare Research, Auckland) who introduced *A. genistae* from France to New Zealand for the biological control of scotch broom in New Zealand. An examination of the mite specimens from the Scotch broom in France and the voucher specimens from New Zealand gorse of Manson (1989) by Zhang revealed that they are different species—the mites from gorse being a new species, rather than “*A. genistae*” as reported by Manson (1989). Xue visited Landcare Research in 2008 and prepared the descriptions and illustrations of two species. During the preparation of a manuscript on these two species, Zhang and Xue did a survey of literature on *A. genistae* and noted numerous errors in previously published records on this species and related species. To clarify the taxonomic problems of “*Aceria genistae*”, Zhang loaned presumed type material of *A. genistae* from the Natural History Museum Vienna. In 2009, Zhang also loaned specimens of *A. genistae* studied by Castagnoli (1978) in Italy. This work was completed during visits by Xiao Han to Landcare Research in 2012 and 2014. The purpose of this paper is to describe the new species of *Aceria* from gorse in New Zealand, revise the concept of *A. genistae* and clarify the taxonomic problems within this species complex.

## Historical and taxonomical review of “*Aceria genistae*”

### *Date of publication*

*Aceria genistae* was listed as published in either 1891 (see Nalepa 1898; Castagnoli 1978; Manson 1989) or 1892 (see Roivainen 1953; Amrine & Stasny 1994; Baker *et al.* 1996). Although this name was first mentioned in Nalepa (1891: 162), Nalepa did not describe the species in this paper—he merely listed it as a new species; hence it was first proposed by Nalepa (1891) as a nude name, not available to science, as correctly interpreted by Newkirk (1984). Nalepa (1892: 532) provided the first description of *A. genistae* (under *Phytoptus*) with two illustrations (ventral view of the body and dorsal view of the prodorsum). Roivainen (1953: 13) correctly attributed the date of publication to 1892.

### *Authority*

There is no doubt that the author of *A. genistae* is Nalepa (1892: 532). Farkas (1965: 42), however, attributed the authority of the “*Aceria genistae*” that he identified to Canestrini without giving any reference to the publication. Canestrini (1893: 153) described *Phyllocoptes genistae* from deformed flowers of *Genista tinctoria* in Italy. This is the only other species of the Eriophyoidea with the specific designation “*genistae*” based on a search of the Zoological Record and all references that we have. Canestrini (1894: 789) repeated the same description of *P. genistae* in 1893, only adding a figure of the infested plant and also indicating the collector (A. Fiori). Both papers contain no illustrations of the species and the descriptions he provided lack the necessary details to allow even a proper generic placement based on the current classification of the family. In his monograph on Eriophyidae, Nalepa (1898) recognized both species, placing his own *genistae* Nalepa, 1892 in

*Eriophyes* (now = *Aceria*) and *genistae* Canestrini in *Phyllocoptes*. Davis *et al.* (1982) considered the generic assignment of *genistae* Canestrini 1893 to be *Phyllocoptes* on page 26, but listed the species in *Eriophyes* (now *Aceria*) on page 127—*genistae* Nalepa listed as species 0905 and *genistae* Canestrini listed as species 0906. In their world catalogue of Eriophyoidea, Amrine and Stasny (1994) listed *P. genistae* Canestrini, 1893 with a question mark, not sure about its current status.

Although the original descriptions of *Phyllocoptes genistae* Canestrini are not detailed enough by modern standards to allow a proper generic placement, it does show at least the following two points: (1) *Phyllocoptes genistae* Canestrini is not a member of the genus *Aceria* because Canestrini (1893) described that the dorsal setae *sc* “avvicinate alla linea mediana”—not posteriorly directed as in *Aceria*; (2) *Phyllocoptes genistae* Canestrini is certainly not *A. genistae* Nalepa because Canestrini (1893) described that this species has “semiannali dorsali 27, lisci”—significantly different from 70 dorsal annuli with microtubercles in *A. genistae* Nalepa, 1892. Farkas (1965: 42) described that his “*Aceria genistae*” has 70 dorsal annuli with fine microtubercles and the feather-claw 7-rayed; thus his “*Aceria genistae* Canestrini” is not *Phyllocoptes genistae* Canestrini, 1893 but *Aceria genistae* Nalepa, 1892. We conclude that Farkas (1965: 42) wrongly attributed the author of his “*Aceria genistae*” to Canestrini and mis-identified his specimens from *Genista*.

#### *Type locality and host plants*

Nalepa (1891) only listed the species name *Phytoptus genistae*, recording it from *Genista pilosa*—no locality was mentioned and no descriptions/figures were provided. Nalepa (1892: 532) described and illustrated it from *G. pilosa* and *C. scoparius* (then placed in *Sarothamnus*), but no locality was mentioned, nor type specimens designated. It is unfortunate that Nalepa (1892) did not indicate if his description was based on specimens from *G. pilosa* or *C. scoparius* or both. The first mention of the distribution/locality of *A. genistae* is by Kieffer (1892: 142–143) who described the galls of this mite on *C. scoparius* in Lorraine, France. This publication was hypothetically attributed to Nalepa by Newkirk (1984: 21), which is a mistake. Newkirk (1984: 21): “The Abbé J. J. Kieffer indicated that that the descriptions in this article ..... were by Nalepa”. It seems rather strange why Newkirk would think that the title Abbé for J. J. Kieffer should indicate that the descriptions in his paper should be someone else. J. J. Kieffer is a priest but also a taxonomist mainly specializing on gall-forming Diptera and Hymenoptera. In “Les acarocécidies de Lorraine (Suite)”, Kieffer (1892: 141–147) described galls, not mites and the paragraph on “*Phytoptus genistae*” (pp. 142–143) consisted mostly a quote from Réaumur (1737, Mem. III, p. 432). There is no description of *Phytoptus genistae*. This paper was published in March 1892 (according to Newkirk) before Nalepa (1892), which was published in July. Thus, Kieffer (1892) read Nalepa (1891) which has no descriptions of the morphology of *A. genistae*.

Amrine and Stasny (1994: 49) probably followed Newkirk (1984) as they listed Lorraine as the type locality and *C. scoparius* as the host plant of *A. genistae* (other plant species listed as alternative hosts). There is no doubt that “Les acarocécidies de Lorraine (Suite)” is authored by Kieffer (1892) and mentioning of *A. genistae* forming galls on *C. scoparius* in that paper cannot be interpreted as evidence that the type locality of *A. genistae* is Lorraine. In his monograph on the Eriophyoidea, Nalepa (1898: 30) referred to his two earlier papers on this species (Nalepa, 1891, 1892) and provided for the first time the distribution of this species: middle Europe. It is obvious that the original description of *A. genistae* is in Nalepa (1892) with mention of the type locality of this species.

## Material and methods

Specimens of eriophyoid mites were collected from France and New Zealand, with details presented in the material examined section for each species. The morphological terminology used here follows Lindquist (1996b) and the generic classification is made according to Amrine *et al.* (2003). In 2008, specimens were examined with a Leica DM4500B (Germany) research microscope with phase contrast and semi-schematic drawings were made; photos were taken with Nikon (Japan) research microscope with differential interference contrast. In 2012–2013, additional specimens were examined with the aid of a Zeiss A2 (Germany) research microscope equipped with phase contrast (A-plan phase objectives:  $\times 10/0.25$ ,  $\times 20/0.45$ ; EC plan-NEOFLUAR phase objectives:  $\times 40/0.75$ ;  $\times 100/1.3$  oil immersion) and schematic drawings were made. Images were taken with the same microscope (under  $100\times$  oil immersion with  $10\times$  eyepieces) with an Axio Cam MRc (Carl Zeiss) system, connected to a computer and using Axiovision image analysis software. Specimens were measured according to de Lillo *et al.* (2010). For each species, the neotype and holotype female measurement precedes the corresponding range for paratypes (given in parentheses). All measurements are in micrometers ( $\mu\text{m}$ ), and are lengths when not otherwise specified. All type specimens are deposited as slide mounted specimens in the New Zealand Arthropod Collection (NZAC), Landcare Research, Auckland.

## Species descriptions

### *Aceria genistae* (Nalepa, 1892) (Figures 1–2, 5A–B)

*Phytoptus genistae* Nalepa, 1891: 162 (nom. nud.).

*Phytoptus genistae* Nalepa, 1892: 532.

*Aceria genistae* (Nalepa); Roivainen, 1953: 13–14.

*Eriophyes genistae* (Nalepa); Castagnoli, 1978: 540–542.

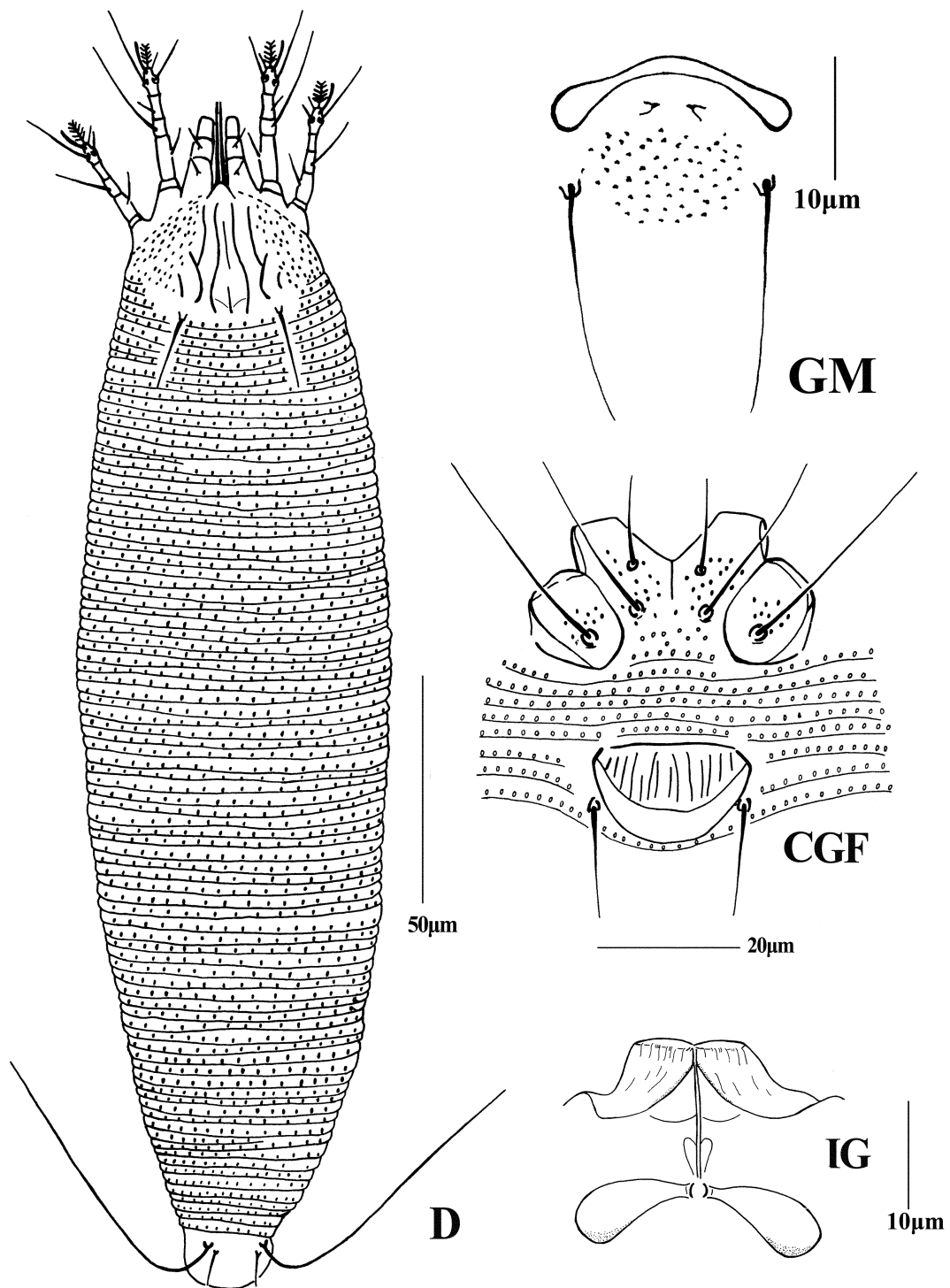
*Aceria genistae* (Nalepa); Amrine & Stasny, 1994: 48–49.

*Aceria genistae* (Nalepa); Baker *et al.*, 1996: 320–322.

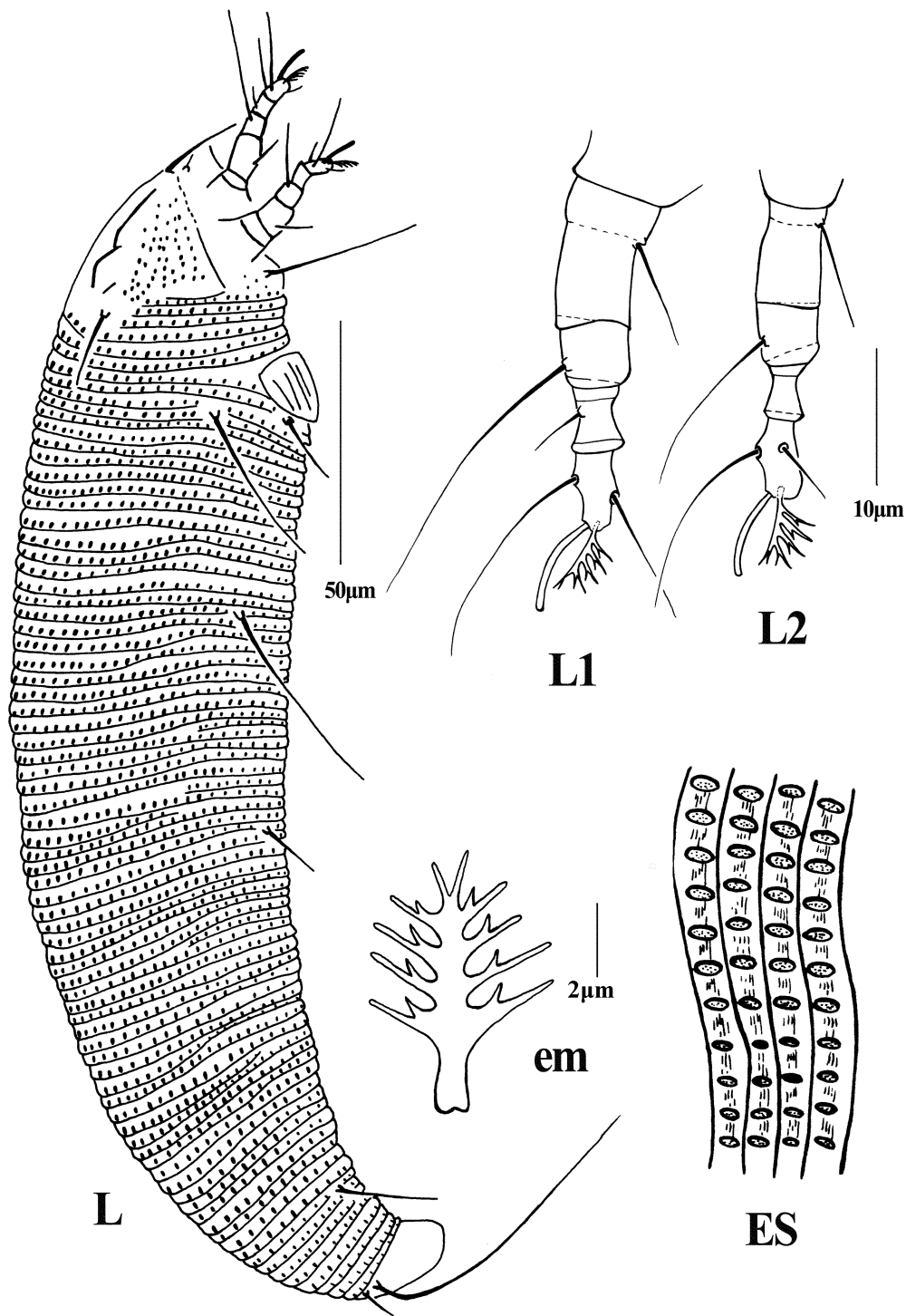
*Aceria genistae* (Nalepa); Syrett *et al.*, 1999: 19, 26, 28, 29.

### Redescription

Female: (neotype and 27 specimens) Body vermiform, 254 (180–254), 56 (48–56) wide, 51 (47–51) thick; light yellow. Gnathosoma 17 (16–17), projecting obliquely down, pedipalp coxal setae (*ep*) 3 (3–4), dorsal pedipalp genual setae (*d*) 4 (4–5), cheliceral stylets 15 (14–15). Prodorsal shield semicircular, with granules laterally, 31 (25–31), 35 (30–35) wide; anterior shield lobe 3 (3–4); median line present  $1/4$  at base, admedian lines convexed at levels of median line but concaved near center, submedian lines branched, basal part continuing with outer branch, strongly concaved and forming a half-circle, inner branch nearly parallel to anterior half of admedian line. Some specimens represent with indistinct “V” shape at the posterior part between the median line and admedian lines. Scapular tubercles on rear margin, 21 (20–21) apart, scapular setae (*sc*) 16 (12–16) projecting posteriorly. Coxal plates with granules; anterolateral setae on coxisternum I (*Ib*) 13 (10–13), 10 (8–11) apart, proximal setae on coxisternum I (*Ia*) 25 (24–25), 9 (7–10) apart, proximal setae on coxisternum II (*2a*) 32 (30–32), 21 (18–24) apart. Prosternal apodeme present, 5 (5–6), not forked posteriorly. Legs with usual series of setae. Legs I 25 (24–27), femur 9 (9–10), basiventral femoral setae (*bv*) 8 (7–8); genu 5 (4–5), antaxial genual setae (*l''*) 22 (22–23); tibia 5 (5–6), paraxial tibial setae (*l'*) 4 (4–5), setae located  $1/3$  from proximal tibial margin; tarsus 6 (5–7), seta *ft'* 10 (8–11), seta *ft''* 17 (15–17); tarsal empodium simple 5 (5–6), 5-rayed, tarsal solenidion ( $\omega$ ) 8 (8–9), rod-like. Legs II 23 (21–24), femur 7 (6–7), basiventral femoral setae (*bv*) 8 (7–8); genu 5 (4–5), antaxial genual



**FIGURE 1.** *Aceria genistae* (Nalepa). D—dorsal view of female; GM—male genitalia; CGF—coxae and female genitalia; IG—internal genitalia.



**FIGURE 2.** *Aceria genistae* (Nalepa). L—lateral view of female; L1—leg I; L2—leg II; em—empodium; ES—enlarged microtubercles.

setae (*l''*) 13 (10–13); tibia 4 (4–5); tarsus 6 (5–6), seta *ft'* 5 (5–6), seta *ft''* 16 (15–17); tarsal empodium simple 5 (5–6), 5-rayed, tarsal solenidion (*ω*) 8 (8–9), rod-like. Opisthosoma: opisthosoma dorsally with 85 (78–89) annuli, with oval microtubercles, ventrally with 77 (75–83) annuli, with oval microtubercles. Setae *c*<sub>2</sub> 35 (33–40) on ventral annulus 9 (9–10), 51 (43–51) apart; setae *d* 43 (38–43) on ventral annulus 25 (25–26), 40 (37–40) apart; setae *e* 12 (8–12) on ventral annulus 43 (41–43), 27 (19–27) apart, setae *f* 20 (18–23) on 8th ventral annulus from rear, 21 (17–21) apart. Setae *h*<sub>1</sub> 7 (6–7), *h*<sub>2</sub> 65 (65–70). Female genitalia 13 (12–13), 22 (20–22) wide, coverflap with 12 to 14 longitudinal ridges, proximal setae on coxisternum III (*3a*) 16 (13–16), 20 (15–20) apart.

Male: (four specimens) Body vermiform, 175–185, 40–45 wide; light yellow. Gnathosoma 17–18, projecting obliquely down, pedipalp coxal seta (*ep*) 2–3, dorsal pedipalp genual seta (*d*) 4–5, cheliceral stylets 14–15. Prodorsal shield semicircular, 25–27, 30–32 wide, shape and pattern similar to that of female; anterior shield lobe 3–4. Scapular tubercles on rear margin, 20–21 apart, scapular seta (*sc*) 12–15 projecting posteriorly. Coxal plates with granules; anterolateral setae on coxisternum I (*1b*) 6–7, 9–10 apart, proximal setae on coxisternum I (*1a*) 20–21, 7–8 apart, proximal setae on coxisternum II (*2a*) 30–32, 19–20 apart. Prosternal apodeme present, 5–6. Legs with usual series of setae. Legs I 25–27, femur 7–8, basiventral femoral seta (*bv*) 4–5; genu 4–5, antaxial genual seta (*l''*) 16–18; tibia 5–6, paraxial tibial seta (*l'*) 4–5, seta located 1/3 from proximal tibial margin; tarsus 5–6, seta *ft'* 10–12, seta *ft''* 20–21; tarsal empodium simple 5 (5–6), 5-rayed, tarsal solenidion (*ω*) 8 (8–9), rod-like. Legs II 23–25, femur 7–8, basiventral femoral seta (*bv*) 4–5; genu 3–4, antaxial genual seta (*l''*) 6–7; tibia 4–5; tarsus 4–5, seta *ft'* 4–5, seta *ft''* 18–20; tarsal empodium simple, 5-rayed, tarsal solenidion rod-like. Opisthosoma: dorsally with 74–81 annuli, with oval microtubercles, ventrally with 68–69 annuli, with oval microtubercles. Seta *c*<sub>2</sub> 27–28 on ventral annulus 10–11, 42–45 apart; seta *d* 30–32 on ventral annulus 22–23, 33–35 apart; seta *e* 7–10 on ventral annulus 35–36, 18–20 apart, seta *f* 17–19 on 9th ventral annulus from rear, 18–19 apart. Seta *h*<sub>1</sub> 5–6, *h*<sub>2</sub> 50–60. Male genitalia 18–19 wide, with dense granules below eugenital setae; proximal setae on coxisternum III (*3a*) 13–16, 13–16 apart.

#### *Type material*

Nalepa (1892) did not designate any type specimens. The label data of voucher material loaned from the Nalepa collection in the Natural History Museum Vienna matched the description in Nalepa (1891, 1892)—see Fig. 6. However, the plant material completely disintegrated into fine dusts and no mites were recovered. Amrine and Stasny (1994) presumed that the type locality is in France (Lorraine). Therefore, a neotype female—from *Cytisus scoparius* (L.) Link (Fabaceae), Mandagout, France (44°01'18"N, 3°37'34"E), April 30, 2007, coll. Q. Paynter—is designated.

#### *Additional material examined*

Seven females, with same data as the neotype. 19 females and 4 males, from *Cytisus scoparius*, October 10, 2014, coll. H. Gourlay, Christchurch, New Zealand; 1 female, from *C. scoparius*, August 26, 1976, coll. Castagnoli, Vallombrosa near Florence, Italy (43°43'57"N, 11°33'24"E), elevation 990 m.

#### *Relation to host*

Gall-making. Mite feeding causes the buds to develop into deformed lumps of various sizes (often diameters of 5 to 30 mm, see Fig. 7).



### Distribution

United States of America (accidentally introduced and widespread, Smith *et al.* 2010), New Zealand (introduced and established, Saggiocco *et al.* 2013), Australia (introduced and established, Saggiocco *et al.* 2013), Italy (Castagnoli 1978), France (Nalepa 1892 and this study), Hungary (Ripka 2008), United Kingdom (Keesing 1981, Welch 1994), Spain (Roivainen 1953), Portugal (Carmona 1980).

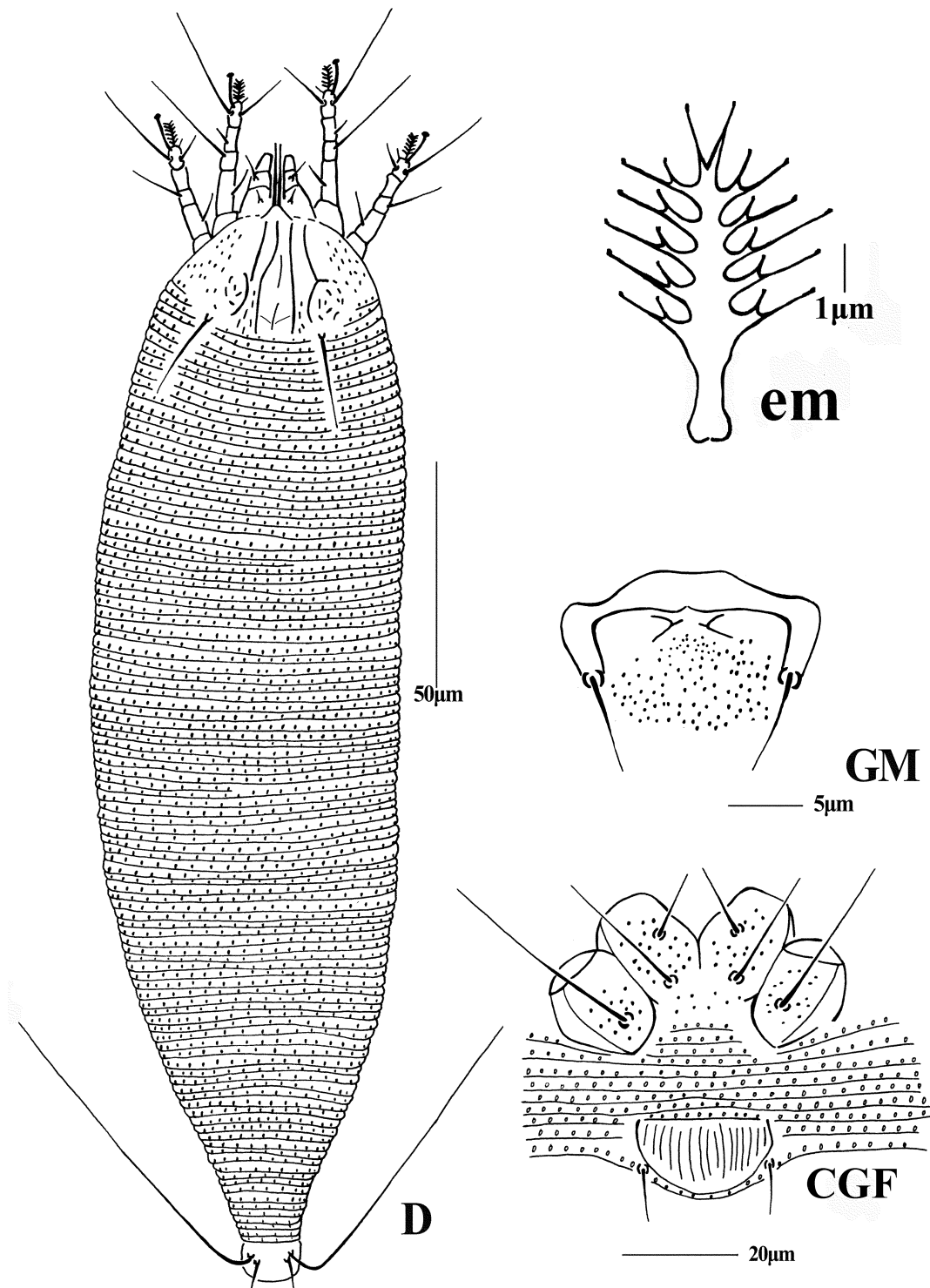
### *Aceria davidmansoni* sp. nov. (Figures 3–4, 5C–D)

*Aceria genistae* (Nalepa); Manson, 1989: 39–40. [ex gorse—incorrect identification].

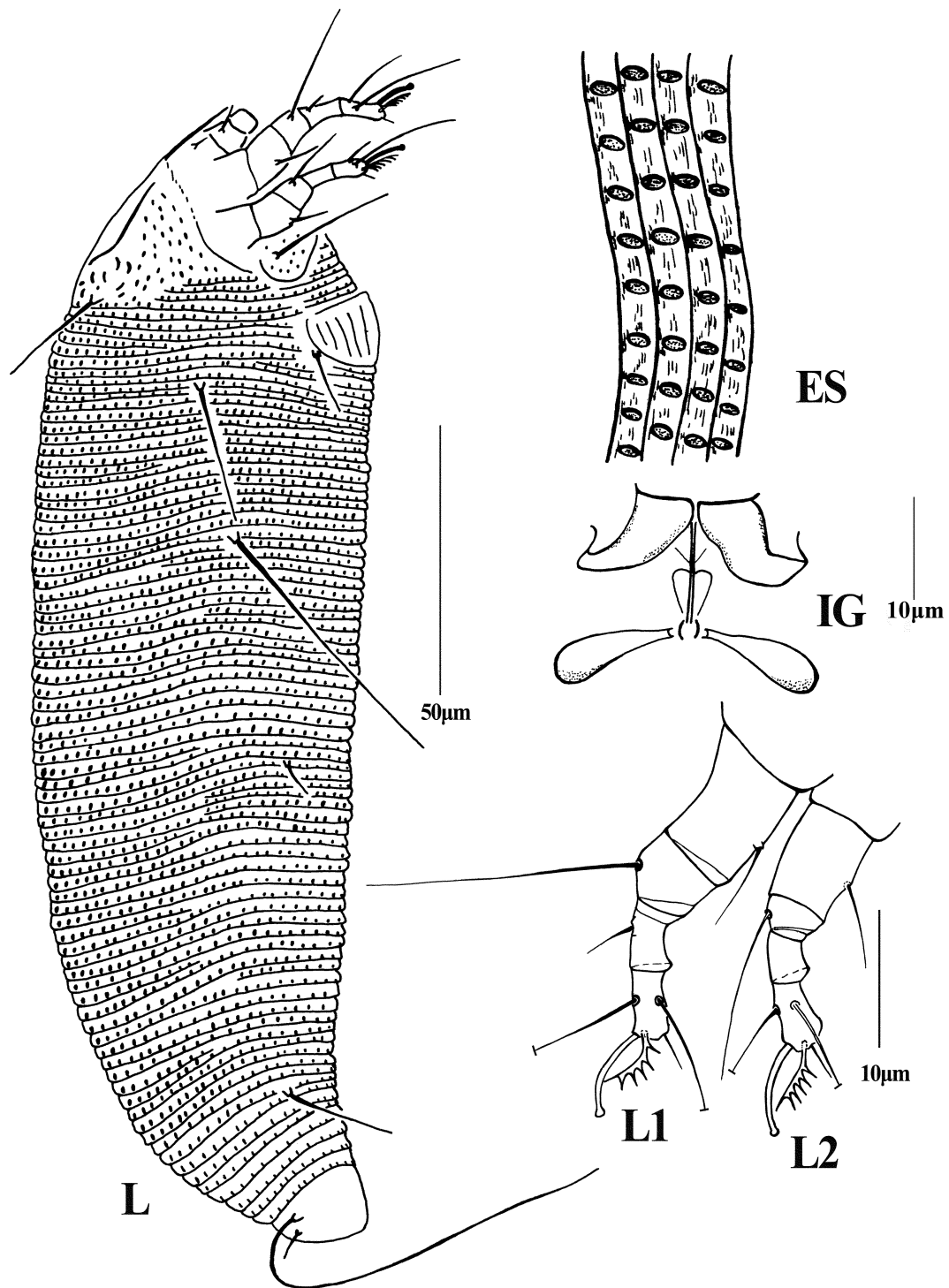
### Description

Female: (holotype and 19 paratypes) Body vermiform, 245 (165–245), 60 (60–62) wide, 62 (60–63) thick; light yellow. Gnathosoma 18 (18–19), projecting obliquely down, pedipalp coxal setae (*ep*) 3 (3–4), dorsal pedipalp genual setae (*d*) 5 (5–6), cheliceral stylets 15 (15–16). Prodorsal shield semicircular, 26 (25–27), 30 (30–33) wide; anterior shield lobe 3 (3–4); median line present and discontinuous, indistinct anteriorly, admedian lines complete, submedian lines concaved in posterior half, forming a pair of discontinuous circles, each with several elongated granules distributed in a circular pattern; prodorsal shield with several elongated granules between admedian and submedian lines at basal 1/3, and also numerous granules lateral to submedian lines. Some specimens represent with indistinct “V” shape at the posterior part between the median line and admedian lines. Scapular tubercles on rear margin, 25 (20–25) apart, scapular setae (*sc*) 20 (20–21) projecting posteriorly. Coxigenital region with 8 (8–9) microtuberculated annuli. Coxal plates with granules; anterolateral setae on coxisternum I (*Ib*) 12 (12–13), 13 (10–13) apart, proximal setae on coxisternum I (*Ia*) 23 (23–25), 10 (8–10) apart, proximal setae on coxisternum II (*2a*) 38 (33–38), 25 (20–25) apart. Prosternal apodeme present, 5 (5–6). Legs with usual series of setae. Legs I 30 (28–31), femur 10 (9–10), basiventral femoral seta (*bv*) 7 (6–7); genu 5 (4–5), antaxial genual seta (*l''*) 22 (18–22); tibia 5 (5–6), paraxial tibial seta (*l'*) 4 (4–5), setae located 1/3 from proximal tibial margin; tarsus 6 (5–6), set *ft'* 13 (11–13), seta *ft''* 23 (22–24); tarsal empodium simple 5 (5–6), 6-rayed, tarsal solenidion ( $\omega$ ) 9 (8–9), little knobbed. Legs II 25 (23–26), femur 8 (7–8), basiventral femoral seta (*bv*) 7 (7–8); genu 4 (4–5), antaxial genual seta (*l''*) 13 (12–13); tibia 4 (4–5); tarsus 5 (5–6), seta *ft'* 6 (6–8), seta *ft''* 23 (22–24); tarsal empodium simple 5 (5–6), 6-rayed, tarsal solenidion ( $\omega$ ) 8 (8–9), little knobbed. Opisthosoma: dorsally with 101 (95–101) annuli, with oval microtubercles, ventrally with 90 (85–92) annuli, with oval microtubercles. Setae *c*<sub>2</sub> 25 (22–25) on ventral annulus 11 (11–12), 58 (50–58) apart; seta *d* 52 (48–52) on ventral annulus 29 (29–30), 50 (50–51) apart; seta *e* 6 (5–6) on ventral annulus 45 (45–49), 26 (25–26) apart, seta *f* 20 (19–22) on 8th ventral annulus from rear, 23 (20–23) apart. Seta *h*<sub>1</sub> 5 (5–6), *h*<sub>2</sub> 81 (81–88). Female genitalia 13 (12–13), 24 (19–24) wide, coverflap with 14 to 16 longitudinal ridges, proximal setae on coxisternum III (*3a*) 12 (11–12), 16 (16–19) apart.

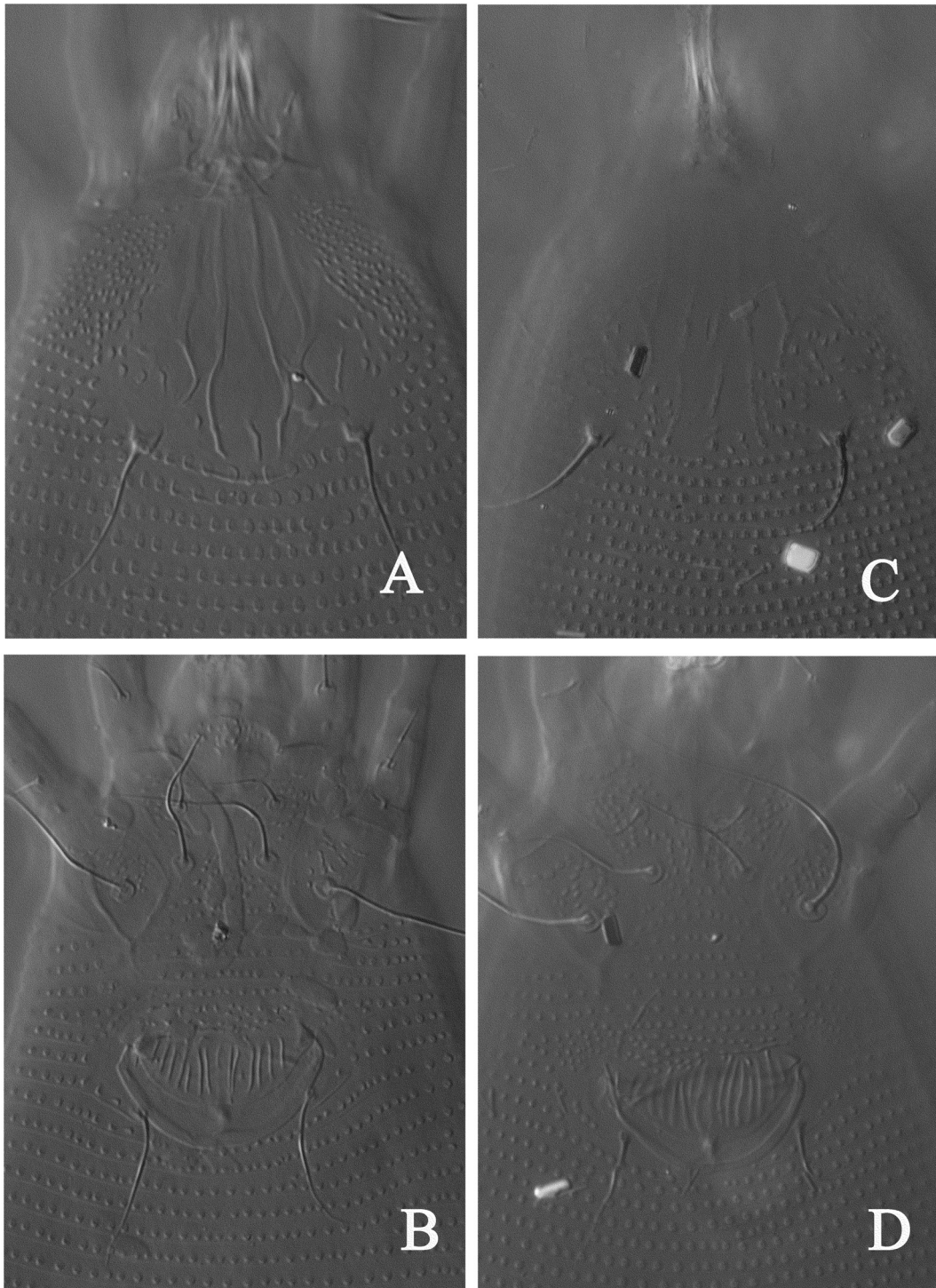
Male: (three paratypes) Body vermiform, 147–160, 45–50 wide; light yellow. Gnathosoma 16–17, projecting obliquely down, pedipalp coxal seta (*ep*) 1–2, dorsal pedipalp genual seta (*d*) 4–5, cheliceral stylets 14–15. Prodorsal shield semicircular, 25–27, 30–33 wide, shape and pattern similar to that of female; anterior shield lobe 3–4. Scapular tubercles on rear margin, 20–22 apart, scapular seta (*sc*) 15–17 projecting posteriorly. Coxal plates with granules; anterolateral setae on coxisternum I (*Ib*) 6–7, 8–9 apart, proximal setae on coxisternum I (*Ia*) 13–15, 7–8 apart, proximal setae on coxisternum II (*2a*) 27–30, 19–20 apart. Prosternal apodeme present, 5–6. Legs with usual series of setae. Legs I 28–30, femur 7–8, basiventral femoral seta (*bv*) 6–7; genu 4–5, antaxial genual seta (*l''*) 18–20; tibia 5–6, paraxial tibial seta (*l'*) 3–4, seta located 1/3 from proximal tibial margin; tarsus 5–



**FIGURE 3.** *Aceria davidmansonii* sp. nov. D—dorsal view of female; em—empodium; GM—male genitalia; CGF—coxae and female genitalia.



**FIGURE 4.** *Aceria davidmansonii* sp. nov. L—lateral view of female; ES—enlarged microtubercles; IG—internal genitalia; L1—leg I; L2—leg II.



**FIGURE 5.** A—prodorsal shield of *Aceria genistae* (Nalepa); B—coxae and female genitalia of *Aceria genistae* (Nalepa); C—prodorsal shield of *Aceria davidmansoni* sp. nov.; D—coxae and female genitalia of *Aceria davidmansoni* sp. nov.

6, seta  $ft'$  10 (10–12), seta  $ft''$  20 (20–21); tarsal empodium simple 5 (5–6), 6-rayed, tarsal solenidion ( $\omega$ ) 8 (8–9), rod-like. Legs II 23–25, femur 7–8, basiventral femoral seta ( $bv$ ) 6–7; genu 3–4, antaxial genual seta ( $l'$ ) 8–10; tibia 4–5; tarsus 5–6, seta  $ft'$  4–5, seta  $ft''$  18–20; tarsal empodium simple 4 (4–5), 6-rayed, tarsal solenidion ( $\omega$ ) 8 (8–9), rod-like. Opisthosoma: dorsally with 75–76 annuli, with oval microtubercles, ventrally with 68–69 annuli, with oval microtubercles. Seta  $c_2$  18–20 on ventral annulus 12–13, 40–42 apart; seta  $d$  30–35 on ventral annulus 23–24, 32–33 apart; seta  $e$  5–6 on ventral annulus 36–38, 17–20 apart, seta  $f$  17 on 6–7th ventral annulus from rear, 17–18 apart. Seta  $h_1$  4–5,  $h_2$  55–60. Male genitalia 16–18 wide, with dense granules below eugenital setae; proximal setae on coxisternum III ( $3a$ ) 9–10, 12–14 apart.

#### Type material

Holotype female from *Ulex europaeus* L. (Fabaceae), Mahinapua Scenic Reserve, Westland, New Zealand (42°47'34"S, 170°54'09"E), November 11, 1985, coll. R. Hill. Paratypes collected from the same host plant as holotype: 13 females and 3 males with same data as the holotype; 2 females, Bowenvale valley, Christchurch, New Zealand (43°34'52"S, 172°38'52"E), January 21, 1986, coll. R. Hill; 1 female, Dansey's Pass North Otago, New Zealand (44°57'10"S, 170°22'23"E), February 7, 1986, coll. R. Hill; 1 female, Paroa/South Beach, West Coast, New Zealand (42°29'29"S, 171°10'32"E), April 16, 1986, coll. A.H. Gourlay; 1 female, Bruce Bay, West Coast, New Zealand (43°36'25"S, 169°35'32"E), April 16, 1986, coll. A.H. Gourlay; 1 female, Westport, West Coast, New Zealand (41°45'11"S, 171°35'06"E), April 16, 1986, coll. A.H. Gourlay.

#### Relation to host

Gall-making. Causing growth deformities in gorse shoots.



**FIGURE 6.** Original containers for plant issues with *Aceria genistae* (Nalepa) from the Nalepa collection. The plant material completely disintegrated into fine dusts.

### Etymology

The specific designation *dauidmansonii* is after David C.M. Manson who first described the species under *Aceria genistae*.

### Differential diagnosis

This species is similar to *A. genistae* (Nalepa), 1892, but can be differentiated by median line discontinuous, indistinct anterior, submedian lines concave at posterior and form two discontinuous circle, there are many granules in the circle (median line present 1/4 at base, submedian lines concave at base and form a half-circle, smooth in the half-circle and between the admedian and submedian lines in *A. genistae*), dorsal opisthosoma with 101 (95–101) annuli, ventrally with 90 (85–92) annuli (dorsal opisthosoma with 85 (78–89) annuli, ventrally with 77 (75–83) annuli in *A. genistae*) (Table 1, Fig. 5).

**TABLE 1.** Main morphological characters discrimination between the females of *Aceria genistae* (Nalepa) and *Aceria dauidmansonii* sp. nov.

Characters	<i>Aceria genistae</i> (Nalepa)	<i>Aceria dauidmansonii</i> sp. nov.
prodorsal shield design	Median line distinct anteriorly, admedian lines convexed at levels of median line but concave near center, submedian lines branched, basal part continuing with outer branch, strongly concave and forming a half-circle, inner branch nearly parallel to anterior half of admedian lines	median line indistinct anteriorly, admedian lines complete, submedian lines concave in posterior half, forming a pair of discontinuous circles, each with several elongated granules distributed in a circular pattern; prodorsal shield with several elongated granules between admedian and submedian lines at basal 1/3, and also numerous granules lateral to submedian lines
scapular setae <i>sc</i> length	16 (12–20)	20 (20–21)
empodium	5-rayed	6-rayed
number of dorsal annuli	85 (78–89)	101 (95–101)
number of ventral annuli	77 (75–83)	90 (85–92)
setae <i>c</i> <sub>2</sub> length	35 (33–40)	25 (22–25)
setae <i>d</i> length	43 (38–43)	52 (48–52)
setae <i>e</i> length	12 (8–12)	6 (5–6)
female genital coverflap	with 12 to 14 longitudinal ridges	with 14 to 16 longitudinal ridges

### Discussion

*Aceria genistae* was regarded as a promising candidate biological control agent for Scotch broom, which can kill young plants and branches (Syrett *et al.* 1999). It was subsequently approved for release in New Zealand for the biological control of Scotch broom in November 2007 (Sagliocco *et al.* 2013). *Aceria genistae* was reported to have a host plant range of 6 plant species. Xue & Zhang (2008) studied Manson's (1989) specimens of "*Aceria genistae*" from gorse in New Zealand and noted it was a misidentification. In this paper, we showed that *A. genistae* from *C. scoparius* caused galls and *Aceria dauidmansonii* sp. nov. from *Ulex europaeus* caused deformed shoots; they are two

species. We focused on material from New Zealand in this paper. In the future, it will be interesting to examine eriophyoid mites from *Cytisus purgans* (L.) Spach., *Genista corsica* L., *G. cinerea* (Vill.) DC., *G. pilosa* L., *G. tinctoria* L., *U. parviflorus* Pourr, to check if these are *A. genistae* or not. It is unknown at this stage if there are more cryptic species in this complex. Skoracka & Kuczyński (2006a, b) showed in cross-host studies that *Abacarus hystrix*, which has commonly been considered as a host generalist, in fact may be a complex species consisting of populations highly specialized among its host plants. Likewise, similar ecological tests of material from different hosts (*Cytisus* spp., *Genista* spp. and *U. parviflorus*) should be conducted to determine if *A. genistae* is specialist or generalist. Material from different hosts should also be collected to support the necessary taxonomic studies. We have studied some specimens from a few hosts in USA and the results, when completed, will be reported in the future.

As eriophyoid species on broom and gorse are so similar in morphology and easy to confuse, in addition to the traditional ecological and morphological methods, molecular methods may provide an effective solution. *Cecidophyopsis ribis* is a severe pest of black currant and also the vector of reversion disease. Fenton *et al.* (1995, 1996, 1997), Kumar *et al.* (1999) and Lemmetty *et al.* (2004) developed protocols to analyse the DNA of eriophyid mites using rDNA ITS1 sequences; it was possible to distinct different *Cecidophyopsis* species on different *Ribes* species. We suggest that more variable DNA markers could be used to differentiate the host species of eriophyoid mites in future studies.



**FIGURE 7.** *Cytisus scoparius* with *Aceria genistae* galls (enlarged view in inset) in Lincoln, Christchurch, New Zealand (photo by H. Gourlay).

### Acknowledgements

We are grateful to Mr Christoph Hörweg, Curator of the Collection Arachnoidea (Natural History Museum Vienna, Department of Invertebrate Zoology, Burgring 7, A-1010 Vienna, Austria) for the loan of samples from the Nalepa collection, and to Dr M. Castagnoli for sending her specimens of *A. genistae*. We also thank Ms Qiong Wang (Nanjing Agricultural University, China) for help with

line drawings. Leonie Clunie and Quentin Paynter (both of Landcare Research, Auckland) kindly reviewed this manuscript and provided useful comments. Hugh Gourlay (Landcare Research, Lincoln, Christchurch) took the photo for Figure 7 and kindly shared with us. This research was funded by the National Natural Science Foundation of China (Youth Science Fund, Grant No. 30600058 to Xiaofeng Xue) and Global Diversity Information Facility (GBIF) Project to Zhi-Qiang Zhang. In the final stage of preparation for this manuscript, Xiao Han was supported by China Scholarship Council and Zhi-Qiang Zhang by New Zealand Government core funding for Crown Research Institutes from the Ministry of Business, Innovation and Employment's Science and Innovation Group.

## Reference

- Amrine, J.W. Jr. & Stasny, T.A. (1994) *Catalog of the Eriophyoidea (Acari: Prostigmata) of the world*. Indira Publishing House, Michigan, U.S.A., 798 pp.
- Amrine, J.W. Jr., Stasny, T.A. & Flechtmann, C.H.W. (2003) *Revised keys to world genera of Eriophyoidea (Acari: Prostigmata)*. Indira Publishing House, Michigan, U.S.A., 244 pp.
- Baker, E.W., Kono, T., Amrine, J.W. Jr., Delfinabo-Baker, M. & Stasny, T.A. (1996) *Eriophyoid mites of the United States*. Indira Publishing House, Michigan, U.S.A., 394 pp.
- Canestrini, G. (1893) Nuovi fitoptidi del Mondenese. *Bulletino della Società Veneto-Trentina*, 5, 153–154.
- Canestrini, G. (1894) Prospetto dell' Acarofauna Italiana. Parte VI. Aggiunta ai Fitoptidi italiani. *Atti della Società Veneto-Trentina di Scienze naturali, Padova*, 2, 773–808, 832–833.
- Carmona, M.M. & da Silva Dias, J.C. (1980) O complexo Acarina nas culturas portuguesas. *Congresso Portugues de Fitiatria e Fitofarmacologia*, 1, 97–115.
- Castagnoli, M. (1978) Ricerche sulle cause di deperimento e moria dello *Spartium junceum* L. in Italia. *Eriophyes genistae* (Nal.) e *E. spartii* (G. Can.) (Acarina, Eriophyoidea): ridescrizione, cenni di biologia e danni. *Redia*, 61, 539–550.
- Chan, K.L. & Turner, C.E. (1998) Discovery of the gall mite *Aceria genistae* (Nalepa) (Acarina: Eriophyidae) on gorse and French broom in the United States. *Pan-Pacific Entomologist*, 74, 55–57.
- Dauphin, P. (1986) Contribution a l'etude des zoocécidies de la gironde. *Bulletin d'Histoire Naturelle de la Société Linnéenne de Bordeaux et de ses Sections françaises et étrangères*, XIV(2), 51–80.
- Davis, R., Flechtmann, C.H.W., Boczek, J.H. & Barke, H.F. (1982) *Catalogue of Eriophyid Mites (Acari: Eriophyoidea)*. Warsaw Agricultural University Press, Poland, 254 pp.
- Farkas, H. (1965) Spinnentiere, Eriophidae (Gallmilben). *Die Tierwelt Mitteleuropas*, 3, 1–155.
- Fenton, B., Malloch, G., Jones, A.T., Amrine, J.W., Gordon, S.C., A'Hara, S., McGavin, W.J. & Birch, A.N.E. (1995) Species identification of *Cecidophyopsis* mites (Acari: Eriophyidae) from different *Ribes* species and countries using molecular genetics. *Molecular Ecology*, 4, 383–387.  
<http://dx.doi.org/10.1111/j.1365-294X.1995.tb00231.x>
- Fenton, B., Jones, A.T., Malloch, G. & Thomas, W.T. (1996) Molecular ecology of some *Cecidophyopsis* mites (Acari: Eriophyidae) on *Ribes* species and evidence for their natural cross colonisation of blackcurrant (*R. nigrum*). *Annals of Applied Biology*, 128, 405–414.  
<http://dx.doi.org/10.1111/j.1744-7348.1996.tb07102.x>
- Fenton, B., Malloch, G. & Moxey, E. (1997) Analysis of eriophyid mite rDNA internal transcribed sequences reveals variable simple sequence repeats. *Insect Molecular Biology*, 6, 23–32.  
<http://dx.doi.org/10.1046/j.1365-2583.1997.00152.x>
- Keesing, J.L.S. (1981) Newcomers to Britain's gall-causing fauna. *Bulletin of the Amateur Entomologist's Society*, 40(330), 16–17.
- Keifer, H.H. (1938) Eriophyid Studies. *Bulletin of the California Department of Agriculture*, 27, 181–206.
- Keifer, H.H. (1944) Eriophyid Studies XIV. *Bulletin of the California Department of Agriculture*, 33, 18–38.
- Kieffer, J.J. (1892) Les acarocécidies de Lorraine (Suite). *Feuille Series* 3, 22(259), 141–147.
- Kumar, P.L., Fenton, B. & Jones, A.T. (1999) Identification of *Cecidophyopsis* mites (Acari: Eriophyidae) based on variable simple sequence repeats of ribosomal DNA internal transcribed spacer-1 sequence via multiplex PCR. *Insect Molecular Biology*, 8, 347–357.  
<http://dx.doi.org/10.1046/j.1365-2583.1999.83123.x>



- Lemmetty, A., Tikkanen, M., Tuovinen, T. & Lehto, K. (2004) Identification of different *Cecidophyopsis* mites on *Ribes* in Finland. *Proceedings of the tenth International Symposium on Small Fruit Virus Disease*, 656, 115–118.
- Lindquist, E.E. (1996a) Evolution of Eriophyoid mites in relation to their host plants. In: Lindquist, E.E., Sabelis M.W. & Bruin, J. (eds). *Eriophyoid Mites: Their Biology, Natural Enemies and Control*. Elsevier, *World Crop Pests*, 6, 227–300.
- Lindquist, E.E. (1996b) External anatomy and notation of structures. In: Lindquist, E.E., Sabelis M.W. & Bruin, J. (eds). *Eriophyoid Mites: Their Biology, Natural Enemies and Control*. Elsevier, *World Crop Pests*, 6, 3–31.
- Manson, D.C. (1989) New species and records of eriophyid mites from New Zealand. *New Zealand Journal of Zoology*, 16, 37–49.  
<http://dx.doi.org/10.1080/03014223.1989.10423702>
- Nalepa, A. (1891) Genera und species der Fam. Phytoptida. *Anzeiger der kaiserlichen Akademie Wissenschaften. Mathematische-naturwissenschaftliche Klasse, Wien*, 28, 162.
- Nalepa, A. (1892) Neue Arten der Gattung Phytoptus Duj. und Cecidophyes Nal. *Denkschriften der kaiserlichen Akademie der Wissenschaften. Mathematische-naturwissenschaftliche Klasse, Wien*, 59, 525–540.
- Nalepa, A. (1898) Eriophyidae (Phytoptidae). *Das Tierreich*, 4, 1–74.
- Newkirk, R.A. (1984) The Eriophyid Mites of Alfred Nalepa. *Entomological Society of America Thomas Say Foundation*, 9, 1–137.
- Ripka, G. (2008) Additional data to the eriophyoid mite fauna of Hungary (Acari: Prostigmata: Eriophoidea). *Acta Phytopathologica et Entomologica Hungarica*, 43(1), 143–161.  
<http://dx.doi.org/10.1556/APhyt.43.2008.1.15>
- Roivainen, H. (1953) Some gall mites (Eriophyidae) from Spain. *Archivos dell Instituto de Aclimatacion*, 1, 9–43.
- Sagliocco, J.L., Sheppard, A., Hosking, J., Hodge, P., Paynter, Q., Gourlay, H. & Ireson, J. (2013) Host specificity testing, release and successful establishment of the broom gall mite (*Aceria genistae*) in Australia and New Zealand for the biological control of broom (*Cytisus scoparius*). In: Wu, Y., Johnson, T., Sing, S., Raghu, S., Wheeler, G., Pratt, P., Warner, K., Center, T., Goolsby, J., Reardon, R. (eds.). *Proceedings of the XIII International Symposium on Biological Control of Weeds*. Waikoloa, Hawaii, USA, 11–16 September, 2011, pp. 409–416.
- Skoracka, A. & Kuczyński, L. (2006a) Is the cereal rust mite, *Abacarus hystrix* really a generalist? Testing colonization performance on novel hosts. *Experimental and Applied Acarology*, 38, 1–13.  
<http://dx.doi.org/10.1007/s10493-005-6077-7>
- Skoracka, A. & Kuczyński, L. (2006b) Host related differences in the development and reproduction of the cereal rust mite, *Abacarus hystrix* (Acari : Eriophyidae) in Poland. *International Journal of Acarology*, 32(4), 397–405.  
<http://dx.doi.org/10.1080/01647950608684488>
- Smith, L., de Lillo, E. & Amrine, J.W.Jr. (2010) Effectiveness of eriophyid mites for biological control of weedy plants and challenges for future research. *Experimental and Applied Acarology*, 51, 115–149.  
<http://dx.doi.org/10.1007/s10493-009-9299-2>
- Syrett, P., Fowler, S.V., Coombs, E.M., Hosking, J.R., Markin, G.P., Paynter, Q.E. & Sheppard, A.W. (1999) The potential for biological control of Scotch broom (*Cytisus scoparius*) (Fabaceae) and related weedy species. *Biocontrol News and Information*, 20, 17–34.
- Welch, R.C. (1994) *Eriophyes genistae* (Nalepa) galls on *Cytisus x praecox* Wheeler in a Northamptonshire garden. *Cecidology*, 9(1), 36–38.
- Xue, X.-F. & Zhang, Z.-Q. (2008) New Zealand Eriophyoidea (Acari: Prostigmata): an update with descriptions of one new genus and six new species. *Zootaxa*, 1962, 1–32
- Zhang, Z.-Q., Fan, Q.-H., Pesic, V., Smit, H., Bochkov, A.V., Khaustov, A.A., Baker, A., Wohltmann, A., Wen, T., Amrine, J.W., Beron, P., Lin, J., Gabrys, G. & Husband, R. (2011) Order Trombidiformes Reuter, 1909. In: Zhang, Z.-Q. (Ed.) *Animal biodiversity: An outline of higher-level classification and survey of taxonomic richness*. *Zootaxa*, 3148, 129–138.

Submitted: 22 Nov. 2014; accepted by Q.-H. Fan: 23 Dec. 2014; published: 5 Jan. 2015