

## **Spider Monkeys in Human-Modified Landscapes : The Importance of the Matrix**

Authors: Arroyo-Rodríguez, Víctor, Pérez-Elissetche, Gloria Karina, Ordóñez-Gómez, José D., González-Zamora, Arturo, Chaves, Óscar M., et al.

Source: Tropical Conservation Science, 10(1)

Published By: SAGE Publishing

URL: <https://doi.org/10.1177/1940082917719788>

---

BioOne Complete ([complete.BioOne.org](https://complete.BioOne.org)) is a full-text database of 200 subscribed and open-access titles in the biological, ecological, and environmental sciences published by nonprofit societies, associations, museums, institutions, and presses.

Your use of this PDF, the BioOne Complete website, and all posted and associated content indicates your acceptance of BioOne's Terms of Use, available at [www.bioone.org/terms-of-use](http://www.bioone.org/terms-of-use).

Usage of BioOne Complete content is strictly limited to personal, educational, and non - commercial use. Commercial inquiries or rights and permissions requests should be directed to the individual publisher as copyright holder.

---

BioOne sees sustainable scholarly publishing as an inherently collaborative enterprise connecting authors, nonprofit publishers, academic institutions, research libraries, and research funders in the common goal of maximizing access to critical research.

# Spider Monkeys in Human-Modified Landscapes: The Importance of the Matrix

Tropical Conservation Science  
Volume 10: 1–13  
© The Author(s) 2017  
Reprints and permissions:  
sagepub.com/journalsPermissions.nav  
DOI: 10.1177/1940082917719788  
journals.sagepub.com/home/trc



Víctor Arroyo-Rodríguez<sup>1</sup>, Gloria Karina Pérez-Elissetche<sup>1</sup>,  
José D. Ordóñez-Gómez<sup>2</sup>, Arturo González-Zamora<sup>3</sup>,  
Óscar M. Chaves<sup>4</sup>, Sònia Sánchez-López<sup>5</sup>, Colin A. Chapman<sup>6</sup>,  
Karenina Morales-Hernández<sup>7</sup>, Miriam Pablo-Rodríguez<sup>5</sup>,  
and Gabriel Ramos-Fernández<sup>8</sup>

## Abstract

With the extant of tropical forest degradation, primates increasingly inhabit forest patches embedded in anthropogenic matrices. Such matrices are composed of different land cover types (e.g., agricultural lands and cattle pastures), but large uncertainty remains about the ability of primates to use these land covers. Here, we assessed the use of the landscape matrix by spider monkeys (*Ateles geoffroyi*) in 13 forest sites from three countries (Mexico, Costa Rica, and El Salvador). Based on ad libitum records from >212 months of field observations, we found that spider monkeys used four types of land covers for feeding or traveling: secondary vegetation, isolated trees, tree crops, and vegetation corridors. Secondary vegetation was more frequently used than the other land covers. The number of land covers present in the matrix was positively related to the number of land covers used for traveling and feeding. Monkeys consumed 53 plant species in the matrix, mostly native and old-growth or late-successional forest species, although they also used three cultivated tree species. Most species were trees, especially from preferred food species, although monkeys also used palms, lianas, and shrubs. Monkeys fed principally from fruits, but they also used leaves, wood, and flowers. Most species were used from secondary vegetation and isolated trees. These findings suggest that the landscape matrix can provide supplementary food sources for this endangered primate and opportunities for traveling (i.e., spatial connectivity) in human-modified landscapes—information that can be used to improve conservation strategies, especially under the context of land-sharing management strategies (e.g., agroforestry).

## Keywords

Atelidae, behavioral flexibility, compositional heterogeneity, corridors, fragmentation, habitat loss, land sharing, landscape supplementation

## Introduction

With increasing land-use change across the tropics (Achard et al., 2014), a large proportion of global biodiversity is found in human-modified tropical landscapes (HMTLs; Melo, Arroyo-Rodríguez, Fahrig, Martínez-Ramos, & Tabarelli, 2013). Such landscapes are highly heterogeneous, as they are usually composed of forest

<sup>4</sup>Departamento de Biodiversidade e Ecologia, Pontifícia Universidade Católica do Rio Grande do Sul, Porta Alegre, Rio Grande do Sul, Brazil

<sup>5</sup>Universidad Veracruzana, Xalapa, Veracruz, Mexico

<sup>6</sup>Department of Anthropology and McGill School of Environment, McGill University Montreal, Quebec, Canada

<sup>7</sup>Primates – El Salvador y Grupo de Trabajo de Mastozoología de El Salvador, Santa Ana, El Salvador

<sup>8</sup>Centro Interdisciplinario de Investigación para el Desarrollo Integral Regional Unidad Oaxaca, Instituto Politécnico Nacional, Oaxaca, Mexico

Received 10 March 2017; Revised 14 June 2017; Accepted 16 June 2017

### Corresponding Author:

Víctor Arroyo-Rodríguez, Instituto de Investigaciones en Ecosistemas y Sustentabilidad, Universidad Nacional Autónoma de México (UNAM), Campus Morelia, Antigua Carretera a Pátzcuaro No. 8701, Ex-Hacienda de San José de la Huerta, 58190 Morelia, Michoacán, Mexico.  
Email: victorarroyo\_rodriguez@hotmail.com

<sup>1</sup>Instituto de Investigaciones en Ecosistemas y Sustentabilidad, Universidad Nacional Autónoma de México, Morelia, Michoacán, Mexico

<sup>2</sup>Cognitive Ethology Laboratory, German Primate Center, Göttingen, Germany

<sup>3</sup>Instituto de Investigaciones Biológicas, Universidad Veracruzana, Xalapa, Veracruz, Mexico



patches surrounded by different types of human-created land covers, including human settlements, agricultural lands, cattle pastures, secondary forests, live fences, and isolated trees (hereafter, anthropogenic matrix). Because forest patches in these landscapes may support a limited availability of food resources (e.g., Arroyo-Rodríguez & Mandujano, 2006; Chaves, Stoner, & Arroyo-Rodríguez, 2012), forest animals, including most primates, can supplement their food intake by using resources from the surrounding matrix, a process named “landscape supplementation” (Dunning, Danielson, & Pulliam, 1992). The matrix can also be used by forest animals to move among forest patches (Franklin & Lindenmayer, 2009), but different land covers show different resistance to interpatch movements (da Silva, Ribeiro, Hasui, da Costa, & da Cunha, 2015; Ricketts, 2001). Unfortunately, large uncertainty remains about the ability of most animal species to use the matrix, the land cover types more frequently used for feeding and traveling, and the food resources used in each land cover. Such knowledge is urgently needed to understand biodiversity patterns in HMTLs, and thus for the construction of informed conservation planning (Franklin & Lindenmayer, 2009; Prevedello & Vieira, 2010; Watling, Nowakowski, Donnelly, & Orrock, 2011), specially for threatened species such as most primates (Estrada et al., 2017).

Primates are often found in HMTLs (Marsh et al., 2013), where a large number of patterns and processes may threaten their survival (Arroyo-Rodríguez & Mandujano, 2009; Estrada et al., 2017; Graham, Matthews, & Turner, 2016). Yet, because most studies in HMTLs assess the impact of forest patch characteristics (e.g., patch size, isolation) on the diet, behavior, and demography of primates (Arroyo-Rodríguez et al., 2013; Carretero-Pinzón, Defler, McAlpine, & Rhodes, 2016), our understanding of the importance of the landscape matrix for primates is incipient. This gap of information may be related, at least partially, to the fact that forest animals may perceive the matrix as a dangerous place where they are more exposed to predation and hunting, and thus, they avoid the use of this landscape element. However, there is evidence that primates are able to use different land covers in the matrix (Estrada et al., 2017), including agroecosystems (Estrada, Raboy, & Oliveira, 2012), and other land covers, such as secondary forests, live fences, subsistence orchards, and isolated trees; but the available information is limited to only a few folivorous (*Colobus guereza*: Harris & Chapman, 2007; *Colobus angolensis*: Anderson, Rowcliffe, & Cowlshaw, 2007; *Alouatta palliata*: Asensio, Arroyo-Rodríguez, Dunn, & Cristóbal-Azkarate, 2009; *Alouatta pigra*: Pozo-Montuy, Serio-Silva, Chapman, & Bonilla-Sánchez, 2013; *Alouatta guariba*: Bicca-Marques & Calegario-Marques, 1995; Chaves & Bicca-Marques, 2017), omnivorous (*Pan troglodytes schweinfurthii*: Reynolds, Wallis, & Kyamanywa, 2003),

and frugivorous/insectivorous monkeys (*Callicebus negrifrons*: Trevelin, Port-Carvalho, Silveira, & Morell, 2007; *Cercopithecus ascanius*: Baranga, Basuta, Teichroeb, & Chapman, 2012). The available information for frugivorous primates, such as the spider monkey (genus *Ateles*), is very scarce.

The Geoffroy’s spider monkey (*Ateles geoffroyi*) is distributed from southeastern Mexico to northwestern Colombia (Di Fiore, Link, & Campbell, 2011). Given its large body size (6–9.4 kg; Ford & Davis, 1992) and mostly frugivorous diet (González-Zamora et al., 2009), *A. geoffroyi* uses large home ranges (95–900 ha; Wallace, 2008). These ecological features make this species particularly sensitive to forest loss and fragmentation (Boyle & Smith, 2010; Garber, Estrada, & Pavelka, 2006; Michalski & Peres, 2005; Ramos-Fernández & Wallace, 2008). Although there are some published reports of spider monkeys using food resources from the matrix, mostly in agricultural lands (Chaves et al., 2012; Estrada et al., 2006, 2012) and secondary forests (Ramos-Fernández & Ayala-Orozco, 2003; Ramos-Fernández, Smith-Aguilar, Schaffner, Vick, & Aureli, 2013), we lack information concerning the land cover types that are frequently used by this species for feeding and traveling in the matrix. Such information is needed to design biodiversity-friendly landscapes (sensu Melo et al., 2013); for example, increasing resource availability and landscape connectivity for endangered species such as *A. geoffroyi*.

Here, we compiled ad libitum observations from 10 studies of spider monkeys carried out in 13 forest patches surrounded by different land cover types in three countries (Mexico, Costa Rica, and El Salvador) to document, for the first time: (a) the general patterns of land cover types used for feeding and traveling in the matrix; and (b) the life forms, plant species, and food items used as food resources in each land cover. Because spider monkeys are considered forest-specialist primates, we hypothesized that monkeys can use the matrix for feeding and traveling, but mainly use those land cover types that are structurally and compositionally more similar to the forest patches in which they reside. Spider monkeys in fragmented forests are known to increase their consumption of leaves (e.g., González-Zamora et al., 2009)—a plant item with lower energetic content and higher levels of secondary compounds and structural material than other plant items, such as fruits (Felton, Felton, Lindenmayer, & Foley, 2009a; Felton et al., 2009b; Milton, 1981). Therefore, we hypothesized that monkeys in the matrix will use primarily fruits (especially from preferred tree species) to supplement their diet, and thus increase the quality of their diet (Asensio et al., 2009; Dunning et al., 1992). This hypothesis is particularly plausible considering that the matrix can be experienced by primates as a relatively hostile place, and thus, they are not expected to leave forest patches to feed from

plant items such as leaves, which are readily available within their home patches (Asensio et al., 2009; although note that leaf quality is highly variable: Snaith & Chapman, 2005).

## Methods

### Data Base

We compiled ad libitum observations of spider monkeys feeding or traveling (i.e., movements within and between land cover types) in different land cover types in the anthropogenic matrix surrounding their home forest

patches from 10 studies of their ecology and behavior carried out in 13 forest sites from Mexico ( $n=9$  patches), El Salvador ( $n=3$ ), and Costa Rica ( $n=1$ ), totaling more than 212 months ( $>17$  years) of field observations (Table 1). We did not take into account the parts of the matrix used for resting, because we did not observe sleeping sites in the matrix. As these studies were not designed to assess matrix use by monkeys, we do not have information on the time spent in each activity and land cover type. Also, sampling efforts were highly variable among studies ( $18 \pm 32$  months per study, mean  $\pm$  SD). Therefore, we based this study on presence/absence data, considering a single event of feeding

**Table 1.** Characteristics of Forest Sites ( $n=13$ ) Where Spider Monkeys (*Ateles geoffroyi*) Have Been Observed Using Different Land Cover Types for Feeding and Traveling in the Anthropogenic Matrix Surrounding Their Home Forest Patches.

Forest site	Location (coordinates)	Mean rainfall (mm)	Vegetation type <sup>a</sup>	Home patch size (ha)	Matrix composition <sup>b</sup>	Feeding <sup>c</sup>	Traveling <sup>c</sup>	References (study length) <sup>d</sup>
1	Santa Rosa, Costa Rica (10°53' 1"N, 85°46'30"W)	~1,600	TDF	10,800	IT, P, SV	IT, SV	IT, SV	1 (38)
2	Nancuchiname, El Salvador (13°17'45"N, 88°34'30"W)	~1,550	TDF	60	P, SV, VC	VC	VC	2 (5)
3	Normandía, El Salvador (13°16'40"N, 88°32'00"W)	~1,550	TDF	33	CI, VC, P, SV	CI, SV	CI, SV	2 (5)
4	Chaguantique, El Salvador (13°19'38"N, 88°38'12"W)	~1,550	TDF	430	VC, P, SV	SV	SV	3 (4)
5	Punta Laguna, Mexico (20°38'00"N, 87°37'00"W)	~1,500	TDF	200	C2, VC, BG, SV	C2, SV	C2, SV	4 (13), 5 (120)
6	Lacandona, Mexico (16°19'52"N, 90°51'06"W)	~2,800	TWF	67	IT, C3, VC, SV, P	IT, C3, VC, SV	IT, C3, VC, SV	6 (15)
7	Lacandona, Mexico (16°20'11"N, 90°48'20"W)	~2,800	TWF	28	IT, CI, C3, VC, SV, P	IT, CI, C3, VC	IT, C3, VC, SV	7 (3), 8 (2)
8	Lacandona, Mexico (16°16'45"N, 90°50'16"W)	~2,800	TWF	141	IT, C3, SV, P	SV	SV	7 (3), 8 (2)
9	Lacandona, Mexico (16°15'12"N, 90°49'60"W)	~2,800	TWF	1,125	IT, C3, VC, SV, P	IT	IT, SV	6 (15)
10	Los Tuxtlas, Mexico (18°23'55"N, 94°44'25"W)	>4,000	TWF	4.6	IT, P, SV	IT, SV	IT, SV	9 (6)
11	Los Tuxtlas, Mexico (18°24'15"N, 94°44'46"W)	>4,000	TWF	9	IT, P, SV	SV	SV	9 (6)
12	Los Tuxtlas, Mexico (18°23'52"N, 94°44'33"W)	>4,000	TWF	8	IT, P, SV	SV	SV	9 (6)
13	Los Tuxtlas, Mexico (18°22'42"N, 94°46'95"W)	>4,000	TWF	24	IT, P, SV	IT, SV	IT, SV	10 (6)

<sup>a</sup>Vegetation types following Gentry (1982): TDF = tropical dry forest; TWF = tropical wet forest.

<sup>b</sup>Land cover types surrounding each forest site: BG = backyard garden; C = tree crops (C1: *Mangifera indica*; C2: *Manilkara zapota*; C3: *Theobroma cacao*); IT = isolated tree; P = cattle pasture; SV = secondary vegetation; VC = vegetation corridor (i.e., live fences and riparian corridors).

<sup>c</sup>Land cover types used for feeding and traveling in the landscape matrix (abbreviations correspond to those showed in the footnote b).

<sup>d</sup>References and study length (i.e., number of months) = 1. C. A. Chapman (unpublished data); 2. K. Morales-Hernández (unpublished data); 3. Argueta and Rivera (2004); 4. M. Pablo-Rodríguez (unpublished data); 5. G. Ramos-Fernández (unpublished data); 6. Chaves, Stoner, and Arroyo-Rodríguez (2012); 7. J. D. Ordóñez-Gómez (unpublished data); 8. K. Pérez-Elissetche (unpublished data); 9. A. González-Zamora (unpublished data); 10. S. Sánchez-López (unpublished data).

or traveling within a given land cover type as evidence of occurrence (see below). The forest patches (i.e., discrete forest masses separated by agricultural lands) we studied ranged from 4.6 to 10,800 ha, and included both tropical wet ( $n = 8$  patches) and tropical dry forests ( $n = 5$ ) following Gentry's (1982) classification of tropical forests (i.e.,  $<2,000$  mm rain/year in tropical dry forests, and  $>2,800$  mm rain/year in tropical wet forests). The composition of the landscape matrix was highly variable, ranging from relatively homogeneous matrices composed of three land covers (e.g., secondary vegetation, cattle pastures, and isolated trees) to heterogeneous matrices composed of six land covers: secondary vegetation, tree crops (i.e., *Mangifera indica*, *Psidium guajava*, and *Theobroma cacao*), vegetation corridors (i.e., live fences and riparian corridors), cattle pastures, and isolated trees (Table 1). Although old secondary forests can be difficult to differentiate from old-growth forests, we focused on secondary forests relatively easy to identify in the field, mostly young regenerating forest stands ( $<30$  years of succession) dominated by light-demanding pioneer genera, such as *Cecropia*, *Ochroma*, *Piper*, *Miconia*, and *Helioparpus*, which usually form a discontinuous canopy of less than 20 m tall, with a very high density of relatively small stems. For each forest site we recorded: (a) the land cover types present in the surrounding landscape matrix; (b) the land cover types used for feeding and/or traveling; and (c) the plant species, live forms, and plant items (e.g., fruit, flowers, leaves, and wood) used as food resources in each land cover type. Due to the dominance of pioneer (early colonizer) species that are typically indicative of forest disturbance (Santos et al., 2008; Tabarelli, Peres, & Melo, 2012), we followed the procedure described by Arroyo-Rodríguez, Pineda, Escobar, and Benítez-Malvido (2009) to classify the species based on their successional status: early colonizers (or pioneer species), late-successional (or non-secondary light demanding) species, and old-growth forest (shade-tolerant) species. This ecological group classification was based on information from several floras (e.g., Flora of Veracruz and Neotropical Flora), as well as several species lists (Arroyo-Rodríguez et al., 2009; Hernández-Ruedas et al., 2014, and references therein). Plant nomenclature was updated according to the Royal Botanical Garden and the Missouri Botanical Garden databases (<http://www.theplantlist.org/>, accessed on December 10, 2016).

### Data Analyses

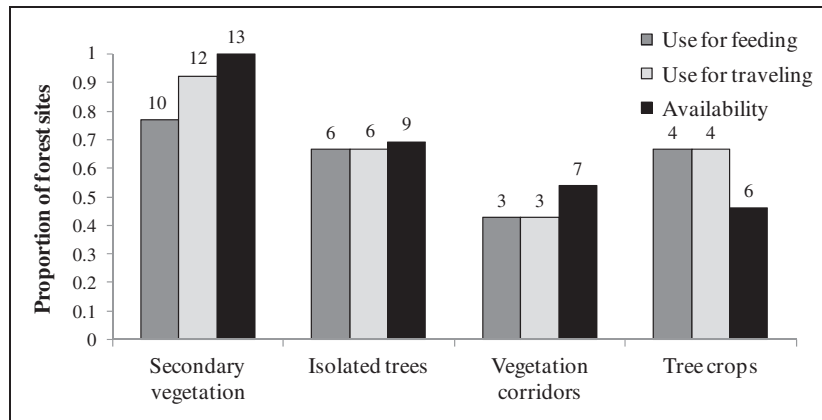
Each forest site was considered as an independent record. We first calculated the proportion of forest sites that presented each land cover type (based on a total of 13 forest sites). This proportion indicates the distribution of each land cover type across forest sites, and can be considered a proxy of availability (e.g., secondary vegetation

occurred in all forest sites, but isolated trees were found in 9 out of 13 sites; Table 1). We also calculated the proportion of forest sites where monkeys were observed feeding or traveling in each land cover type. As monkeys cannot use land covers that are not present in a given site, in this case, proportions are calculated considering the distribution of each land cover across forest types, and not based on the total number of forest sites (e.g., monkeys fed from isolated trees in 6 sites, but as this land cover type was only present in 9 sites, they used isolated trees for feeding in 67% of sites, and not 46% if we would consider 13 sites; Table 1). We then assessed whether the observed proportions differed from the proportions expected based on the distribution of each land cover type across forest sites with a  $\chi^2$  test. Using a simple linear regression, we also tested if the number of land cover types used in each forest site were related to the number of land cover types present in the surrounding matrix. Finally, as there was a wide variation in the length of studies and forest patch size (Table 1), and such variation can affect our results and conclusions, we also used linear regressions to assess the effect of study length and patch size on the number of plant species used in the matrix and the number of land covers used for feeding and traveling. All statistical analyses were done with R software (R Core Team 2017) assuming a statistical threshold (alpha) of .05.

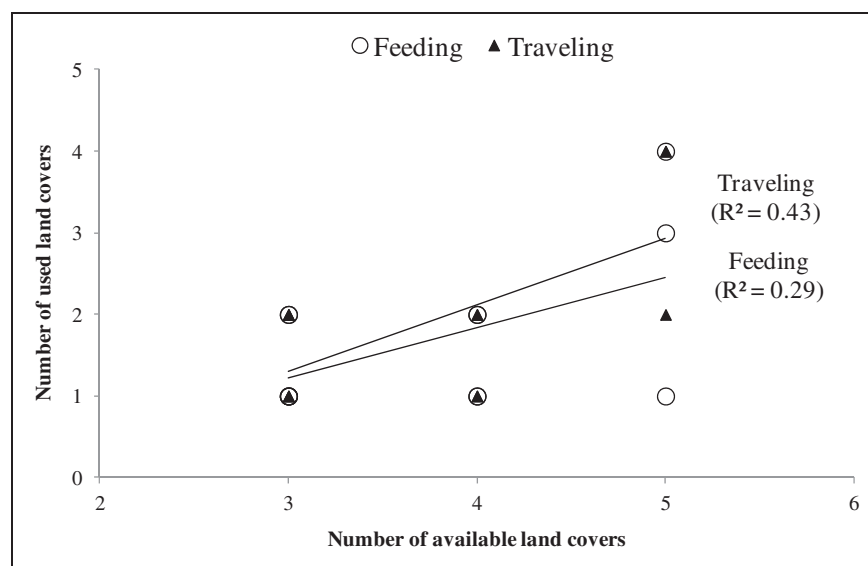
### Results

Spider monkeys fed and traveled in four different matrix types: secondary vegetation, isolated trees, tree crops (i.e., *Mangifera indica*, *Manilkara zapota*, and *Theobroma cacao*) and vegetation corridors (i.e., live fences and riparian corridors; Table 1). In general, secondary vegetation was more frequently used than the other land covers, both for feeding and traveling (Figure 1). This pattern may be related to the fact that all forest sites showed secondary vegetation in their surrounding matrix, whereas the rest of land covers were present in six to nine forest sites (Table 1; Figure 1). In fact, the proportion of sites where monkeys were observed feeding ( $\chi^2 = 0.81$ ,  $df = 3$ ,  $p = .85$ ) or traveling ( $\chi^2 = 1.85$ ,  $df = 3$ ,  $p = .60$ ) within each land cover type did not differ from what we can expect based on the distribution of such land covers across forest sites (Figure 1). In this sense, we found a positive association between the number of land covers in the matrix and the number of land covers used for traveling ( $r = .66$ ,  $p = .02$ ) and feeding ( $r = .54$ ,  $p = .059$ ; Figure 2).

In total, spider monkeys consumed 53 plant species belonging to 20 families (Table 2). Most species (83%) were trees, but spider monkeys also used palms (7%), lianas (6%), and shrubs (4%). All tree species, except *Mangifera indica*, are native to the respective forest sites and three species are cultivated (*Mangifera indica*,



**Figure 1.** Proportion (and total numbers above each column) of forest sites where spider monkeys (*Ateles geoffroyi*) fed or traveled in different land cover types present in the anthropogenic matrix. The proportion of forest sites surrounded by each land cover is added as a proxy of the availability of each land cover, and are calculated based on the total number of study sites ( $n = 13$ ). Yet, the proportion of forest sites used for feeding and traveling are calculated considering the availability of each land cover across the sites.



**Figure 2.** Association between the number of land covers in the matrix (x-axis) and the number of land covers used by spider monkeys (*Ateles geoffroyi*) for feeding and traveling in 13 forest sites from Mexico, El Salvador, and Costa Rica. Note that each point represents a different forest site.

*Theobroma cacao*, and *Psidium guajava*). Most species are old-growth forest species (42%) or late-successional species (34%), and only 19% are early colonizer species.

Regarding the frequency of use of each species, most species (72%) were used in one single site (Table 1), and nine species (17%) were used in two forest sites (i.e., *Mangifera indica*, *Tapirira mexicana*, *Bursera simaruba*, *Heliocarpus donnellsmithii*, *Theobroma cacao*, *Miconia argentea*, *Brosimum* sp., *Ficus aurea*, and *Ficus yoponensis*). The species most frequently used were *Brosimum*

*alicastrum*, *Spondias mombin*, and *Ficus* sp., which were used in 3 out of 13 forest sites.

Regarding the plant items eaten, monkeys fed from fruits of 29 species (55% of species) and leaves of 19 species (36%). Five species (*Licania platypus*, *Swietenia macrophylla*, *Ficus* sp., *Ficus aurea*, and *Ficus insipida*) were also used as a source of wood and two species (*Dussia mexicana* and *Luehea seemannii*) as a source of flowers (Table 2). In fact, *Ficus* spp. were used for their fruits, leaves, and wood, and monkeys used two plant items of seven species: *Bursera simaruba*, *Enterolobium*

**Table 2.** Plant Species and Food Items Used by Spider Monkeys (*Ateles geoffroyi*) for Feeding in Different Land Cover Types Surrounding 13 Forest Sites Distributed in Three Countries (Costa Rica, El Salvador, and Mexico).

Family	Tree species <sup>a</sup>	Life form	EG <sup>b</sup>	Plant items <sup>c</sup>	Land cover <sup>d</sup>	Proportion of sites <sup>e</sup>	Ref. <sup>f</sup>	
Anacardiaceae	<i>Mangifera indica</i> *	Tree	C	F	IT, TC	0.15	2, 7, 8	
	<i>Metopium brownei</i>	Tree	OG	F	SV	0.08	5	
	<i>Spondias mombin</i> †	Tree	OG	F	SV	0.23	3, 5, 6	
	<i>Spondias radlkoferi</i>	Tree	OG	L	SV	0.08	9	
	<i>Tapirira mexicana</i> †	Tree	OG	L	SV	0.15	9	
Araceae	<i>Philodendron tripartitum</i>	Liana	OG	L	IT	0.08	9	
	<i>Rhodospatha</i> sp.	Liana	OG	L	VC	0.08	7	
Arecaceae	<i>Astrocaryum mexicanum</i> †	Palm	OG	L	IT	0.08	9	
	<i>Attalea butyracea</i> †	Palm	OG	F	IT, TC	0.08	7, 8	
	<i>Attalea cohune</i>	Palm	OG	F	TC	0.08	8	
	<i>Sabal mexicana</i> †	Palm	OG	F	IT	0.08	6	
Boraginaceae	<i>Cordia alba</i>	Tree	OG	F	VC	0.08	2	
Burseraceae	<i>Bursera</i> sp.	Tree	LS	-	IT, SV	0.08	1	
	<i>Bursera simaruba</i> †	Tree	LS	F, L	SV	0.15	5, 9	
Chrysobalanaceae	<i>Licania platyphus</i> †	Tree	OG	W	IT	0.08	6	
Ebenaceae	<i>Diospyros tetrasperma</i>	Tree	OG	F	SV	0.08	5	
Euphorbiaceae	<i>Alchornea latifolia</i> †	Tree	OG	F	IT	0.08	10	
Fabaceae	<i>Dussia mexicana</i> †	Tree	OG	Fl	SV	0.08	9	
	<i>Enterolobium cyclocarpum</i> †	Tree	LS	F, L	SV	0.08	5	
	<i>Inga</i> sp. †	Tree	LS	-	VC	0.08	7	
	<i>Inga oerstediana</i>	Tree	LS	-	SV	0.08	3	
	<i>Leucaena</i> sp.	Tree	LS	L	IT	0.08	7	
	<i>Pithecellobium hymenaefolium</i> †	Tree	P	F	IT, TC	0.08	8	
Malvaceae	<i>Guazuma ulmifolia</i> †	Tree	P	F	SV	0.08	5	
	<i>Heliocarpus donnellsmithii</i>	Tree	P	L	SV	0.15	9	
	<i>Luehea seemannii</i>	Tree	P	Fl	IT, SV	0.08	9	
	<i>Robinsonella mirandae</i>	Tree	LS	L	IT	0.08	10	
	<i>Theobroma cacao</i>	Tree	C	F	TC	0.15	6, 8	
Melastomataceae	<i>Miconia argentea</i> †	Tree	P	F, L	IT, SV	0.15	9, 10	
Meliaceae	<i>Swietenia macrophylla</i>	Tree	OG	W	VC	0.08	8	
	<i>Brosimum</i> sp. †	Tree	OG	F, L	IT, VC	0.15	6, 7	
Moraceae	<i>Brosimum alicastrum</i>	Tree	OG	L	SV	0.23	3, 9	
	<i>Castilla elastica</i> †	Tree	OG	-	SV	0.08	3	
	<i>Ficus</i> sp. †	Tree	LS	F, L, W	TC, SV	0.23	6, 8, 9	
	<i>Ficus americana</i> †	Tree	LS	F	IT	0.08	10	
	<i>Ficus apollinaris</i> †	Tree	LS	F	SV	0.08	9	
	<i>Ficus aurea</i> †	Tree	LS	L, W	IT, TC	0.15	6, 7	
	<i>Ficus cotinifolia</i> †	Tree	LS	F	SV	0.08	5	
	<i>Ficus crassinervia</i> †	Tree	LS	F	SV	0.08	5	
	<i>Ficus insipida</i> †	Tree	LS	W	IT	0.08	6	
	<i>Ficus maxima</i> †	Tree	LS	L	VC	0.08	7	
	<i>Ficus yoponensis</i> †	Tree	LS	F, L	SV	0.15	9	
	<i>Maclura tinctoria</i>	Tree	LS	F, L	IT, VC	0.08	6	
	Muntingiaceae	<i>Muntingiasp.</i> †	Shrub	P	-	IT, SV	0.08	1
	Myrtaceae	<i>Psidium guajava</i>	Tree	C	F	IT	0.08	7

(continued)

**Table 2.** Continued

Family	Tree species <sup>a</sup>	Life form	EG <sup>b</sup>	Plant items <sup>c</sup>	Land cover <sup>d</sup>	Proportion of sites <sup>e</sup>	Ref. <sup>f</sup>
Rosaceae	<i>Prunus serotina</i>	Tree	P	F	SV	0.08	7, 8
Sapindaceae	<i>Cupania glabra</i> <sup>‡</sup>	Tree	OG	F	TC	0.08	8
Sapotaceae	<i>Manilkara zapota</i> <sup>‡</sup>	Tree	OG	F	TC	0.08	4
	<i>Pouteria sapota</i> <sup>‡</sup>	Tree	OG	F	TC, VC	0.08	8
Smilacaceae	<i>Smilax</i> sp.	Liana	OG	L	TC	0.08	8
Urticaceae	<i>Cecropia</i> sp. <sup>‡</sup>	Tree	P	-	IT, SV	0.08	1
	<i>Cecropia obtusifolia</i> <sup>‡</sup>	Tree	P	F	IT	0.08	10
	<i>Cecropia peltata</i> <sup>‡</sup>	Tree	P	-	SV	0.08	3

<sup>a</sup>The plant species marked with asterisk (\*) are exotic species (the rest are native species) and those with (‡) represent top food species (i.e., species corresponding to  $\geq 80\%$  of total feeding time) within a review of spider monkeys' diet through their geographic range (González-Zamora et al., 2009).

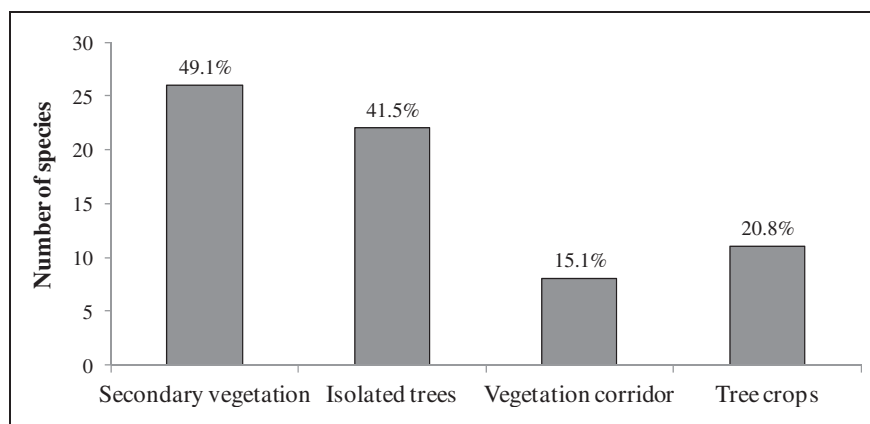
<sup>b</sup>Ecological groups: early colonizers or pioneer species (P), nonsecondary light demanding or late-successional species (LS), shade-tolerant or old-growth forest species (OG), and cultivated species (C).

<sup>c</sup>(Used plant items: fruits (F), flowers (Fl), leaves (L), and wood (W); -) unavailable information.

<sup>d</sup>Land cover types where each plant species was used: tree crops (TC), isolated tree (IT), secondary vegetation (SV), and vegetation corridor (VC).

<sup>e</sup>We indicate the proportion of sites where monkeys were observed feeding from each species ( $n = 13$  sites).

<sup>f</sup>References correspond to those showed in Table 1.



**Figure 3.** Number of plant species (and percentages from a total of 53 species) used by spider monkeys (*Ateles geoffroyi*) as a food source in different land cover types within the anthropogenic matrix surrounding their home forest patches.

*cyclocarpum*, *Miconia argentea*, *Brosimum* sp., *Ficus aurea*, *Ficus yoponensis*, and *Maclura tinctoria*.

Most plant species (26 species, 49%) were used in secondary vegetation, and a large number of species (22 species, 42%) were also used as isolated trees (Table 2; Figure 3). Monkeys fed from a lower number of plant species in tree crops (11 species) and vegetation corridors (8 species). Because most species (40 species) were used in one single land cover, the species turnover ( $\beta$ -diversity) between land covers was very high (only 13 plant species were used in two land covers, and no species was used in three or more land covers; Table 2).

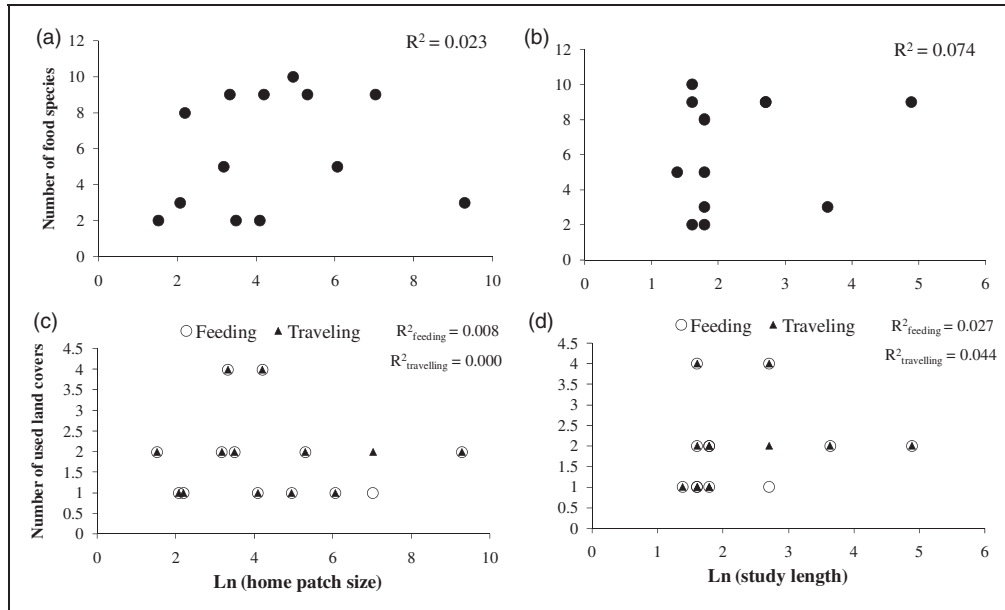
Differences in patch size and study length across studies were not related to the number of food species (Figure 4(a) and (b)) and the number of land covers used by spider monkeys for feeding and traveling

(Figure 4(c) and (d)). This suggests that matrix use by spider monkeys was largely independent of patch size and study length.

## Discussion

This study shows that spider monkeys use different land cover types from the anthropogenic matrix for feeding and traveling in HMTLs. We observed monkeys feeding from 53 plant species—a significant figure considering that 16 groups of spider monkeys in five countries (Mexico, Guatemala, El Salvador, Costa Rica, and Panama) fed from 364 plant species (González-Zamora et al., 2009). In fact, most of the plant species are native and old-growth or late-successional forest species considered top food species for spider monkeys





**Figure 4.** Effect of home patch size and study length on the number of plant species used by spider monkeys (*Ateles geoffroyi*) as food resources in the matrix (a to b), and the number of land covers used for feeding and traveling in 13 forest sites from Mexico, El Salvador, and Costa Rica. All  $R^2$  values were not significant ( $p > .7$ , in all cases).

(González-Zamora et al., 2009). They consumed different life forms (trees, lianas, palms, and shrubs) and plant items (fruits, leaves, flowers, and wood), but as expected, fruits were the most frequently plant item eaten. Although we cannot quantify the importance of these feeding and traveling events for the fitness of these monkeys in HMTLs, our findings demonstrate that some human-created land covers in the matrix are not entirely hostile to this primate, but rather contain usable resources, not only to supplement their diet but also to move within and between land cover types (Arroyo-Rodríguez & Mandujano, 2009; Dunning et al., 1992; Franklin & Lindenmayer, 2009; Tschardt et al., 2012). Thus, our study adds to an increasing line of evidence suggesting that forest edges do not represent home range boundaries for different species in fragmented forests (Dunning et al., 1992; Fahrig, 2013; Mendenhall et al., 2014; Tschardt et al., 2012; Watling et al., 2011).

Although we have no information on the time spent within each land cover outside their home forest patches, we observed monkeys feeding and traveling in patches of secondary vegetation, different types of tree crops, vegetation corridors, and isolated trees, including records from both tropical wet forests and tropical dry forests in Mexico, El Salvador, and Costa Rica. Such behaviors can allow primates to supplement their diet in HMTLs (Dunning et al., 1992). As increasingly demonstrated in studies of primates (Anderson et al., 2007; Asensio et al., 2009; Chaves & Bicca-Marques, 2017; Estrada et al., 2012; Pozo-Montuy et al., 2013), supplementation dynamics are likely of critical relevance for species

persistence in fragmented landscapes (Dunning et al., 1992), especially because the availability of food resources can be limited in forest patches, or because patches can be too small to sustain viable populations (e.g., Arroyo-Rodríguez & Mandujano, 2006, 2009).

Supporting the idea that monkeys are supplementing their diet with resources obtained from the matrix, we found that, as predicted, fruits were the most frequently eaten plant item, followed by leaves, wood, and flowers. Because fruits are expected to be scarce within forest patches (e.g., Chaves et al., 2012; González-Zamora et al., 2009, 2012), and have high concentrations of soluble carbohydrates (and energetic content), but low levels of secondary compounds and structural material (Felton et al., 2009a, 2009b; Milton, 1981), the consumption of this food item in the matrix probably improved the quality of spider monkeys' diet. The consumption of leaves, wood, and flowers was also common in most forest sites, probably as a strategy of protein, lipid, and mineral supplementation (Chaves, Stoner, Ángeles-Campos, & Arroyo-Rodríguez, 2011a; Felton et al., 2009a, 2009b; Rothman, Van Soest, & Pell, 2006). Yet, additional studies comparing the nutritional value of the diet within their home forest patches versus the diet in the matrix are needed to better understand the effect of these feeding events in the matrix on primate's diet and nutrition.

As expected, secondary vegetation was more frequently used than other land covers. Yet, when comparing the frequency of use of each land cover with their distribution in the sites, our findings suggest that the use of each land cover was directly proportional to their availability,

suggesting no selection of particular land covers. In fact, the number of land covers in the matrix was positively related to the number of land covers used for feeding and traveling. Thus, although spider monkeys are strongly threatened by forest loss and disturbance (Garber et al., 2006; Ramos-Fernández & Wallace, 2008), this finding highlights the behavioral flexibility of spider monkeys (Amici, Aureli, & Call, 2008; González-Zamora et al., 2009; Schaffner, Rebecchini, Ramos-Fernandez, Vick, & Aureli, 2012; Wallace, 2008), and the importance of matrix heterogeneity for species conservation in HMTLs (Revilla, Wiegand, Palomares, Ferreras, & Delibes, 2004; Ricketts, 2001; Tubelis, Cowling, & Donnelly, 2004). Each land cover patch can support different resources, thus providing higher resilience and stability in ecological processes, such as feeding and dispersal (see the “landscape-moderated insurance hypothesis”; Tschardt et al., 2012). The fact that monkeys used different plant species in each land cover suggests that vegetation composition differs widely between land covers (high beta diversity). Thus, for arboreal species such as spider monkeys, the presence of different types of tree covers in the matrix can provide opportunities for traveling (landscape connectivity) and feeding from different food resources (Revilla et al., 2004; Ricketts, 2001; Tubelis et al., 2004). This is probably important in severely deforested/degraded landscapes where increasing interpatch isolation distances can limit species persistence (Fahrig, 2013; Tubelis et al., 2004).

### Implications for Conservation

Old-growth tropical forests are the main habitat of spider monkeys, and thus, the preservation of this species-rich ecosystem should be considered of highest priority for the conservation of this endangered primate. The great value of large forest remnants for primate conservation is incontrovertible (Estrada et al., 2017), but what is questionable is the exclusion of the anthropogenic matrix from conservation initiatives (Chapman, Chapman, & Glander 1989; Hockings, Yamakoshi, & Matsuzawa, 2017; Nekaris et al., 2017; Perfecto & Vandermeer, 2010).

In this sense, the maintenance of native and some cultivated trees in the anthropogenic matrix is of critical importance for spider monkeys, as all land cover types used by this primate were composed of trees (both native and cultivated). We refer to agroforests, such as shade cacao plantations (*Theobroma cacao*), mango (*Mangifera indica*), and guava (*Psidium guajava*; e.g., Estrada et al., 2012; Hockings et al., 2017), and other important landscape elements, such as vegetation corridors and isolated trees of native species (Asensio et al., 2009). Overall, the maintenance of these trees in the matrix has numerous benefits for both primates and humans. The benefits for primates go beyond their importance as supplementary food sources, as they are

also critical to increase landscape connectivity, favoring interpatch dispersal movements (Pozo-Montuy et al., 2013). The benefits for humans include key ecosystem services, such as carbon sequestration, climate regulation, and water quantity (Díaz, Fargione, Chapin, & Tilman 2006). Furthermore, there are many cobenefits for humans of having both higher tree cover and primates in the landscape, including the soil nutrient enrichment through primates’ defecations, seed dispersal and rapid forest recovery (see below), education/inspiration, and esthetic values (e.g., Díaz et al., 2006; Feeley, 2005; Hockings et al., 2017). Related to the education/inspiration and esthetic values, local people can also obtain important economic resources from ecotourism associated with visits to primate groups, which is known to be an economically significant activity in many locations worldwide (Serio-Silva, 2006; Wolfe, 1991).

The fact that secondary vegetation was more frequently used by spider monkeys than other land covers supports an increasing number of studies underlining the importance of secondary forests for biodiversity conservation (Arroyo-Rodríguez et al., 2017; Martínez-Ramos et al., 2016; Melo et al., 2013; Omeja et al., 2016; Wright & Muller-Landau, 2006). Secondary forest does not only serve as supplementary habitat for forest species (Martínez-Ramos et al., 2016), but it also enhances landscape connectivity (Arroyo-Rodríguez et al., 2017), and provides key ecosystem services (e.g., carbon sequestration; Martínez-Ramos et al., 2016). Here, we show that secondary forests can be used by spider monkeys for feeding and traveling. Although additional studies are needed to better understand the role of these behaviors on primates’ survival and well-being in HMTLs, some long-term studies demonstrate that spider monkeys can actually live and even reproduce successfully in secondary forests, at least when located next to old-growth forests (Ramos-Fernández & Ayala-Orozco, 2003; Ramos-Fernández et al., 2013). Of course, this does not mean that secondary forests alone are enough for the maintenance of primate populations in the long term, but that they can be used to improve the quality of the anthropogenic matrix, and accelerate forest recovery through secondary succession (see below). Tree crops, vegetation corridors, and isolated trees can also contribute to improve the quality of the matrix, as they can provide important food resources for spider monkeys (note that most plant species consumed from these land covers are classified as top food species for this primate; González-Zamora et al., 2009).

A topic that merits particular attention is the fact that spider monkeys are effective seed dispersers of a large number of plant species (Chaves, Stoner, Arroyo-Rodríguez, & Estrada, 2011b; González-Zamora et al., 2012). Thus, the use of all these land cover patches in the matrix likely contributes to forest recovery in HMTLs. Therefore, maintaining different types of tree

covers in the vicinity of occupied forest patches is not only needed to conserve the remaining populations of this endangered primate species in HMTLs but also to preserve important ecological services, such as forest regeneration.

Our results present a straightforward message for conservation biologists and managers, especially when conservation strategies involve the retention of habitat patches in agricultural mosaics (land-sharing approach; Perfecto & Vandermeer, 2010); namely, some land covers in the landscape matrix contain food tree species for primates and other taxa (Dunning et al., 1992), and thus some matrix types can be beneficial to conserve and expand spider monkey populations in fragmented forests. Secondary forest cover is increasing across the Neotropics due to migration of people to urban areas and the abandonment of productive lands (Aide et al., 2013). This represents good news for the conservation of spider monkeys, and puts a priority on taking advantage of this changing situation and managing regenerating landscapes and investigations into primate restoration ecology (Jacob, Vaccaro, Sengupta, Hartter, & Chapman, 2008; Wright & Muller-Landau, 2006; Melo et al., 2013).

### Acknowledgments

GKPE thanks Prof. A. Estrada for his useful advice during the development of her MSc thesis. Such advice contributed to improve the present manuscript. We also gratefully acknowledge three anonymous reviewers for their valuable and constructive comments and suggestions.

### Author Contributions

Víctor Arroyo-Rodríguez and Gloria K. Pérez-Elissetche planned the research and designed methodology with the advice of G. Ramos-Fernandez. Gloria K. Pérez-Elissetche organized the data and Víctor Arroyo-Rodríguez analyzed the data. Víctor Arroyo-Rodríguez and Gloria K. Pérez-Elissetche wrote the first draft of the manuscript. All authors provided data and contributed critically to the drafts.

### Declaration of Conflicting Interests

The author(s) declared no potential conflicts of interest with respect to the research, authorship, and/or publication of this article.

### Funding

The author(s) disclosed receipt of the following support for the research, authorship, and/or publication of this article: This research was supported by the American Society of Primatologist (2012 ASP Conservation Grant). GKPE obtained a scholarship from CONACyT, Mexico. The Instituto de Investigaciones en Ecosistemas y Sustentabilidad (UNAM) provided logistical support.

### References

Achard, F., Beuchle, R., Mayaux, P., Stibig, H. J., Bodart, C., Brink, A., ... Simonetti, D. (2014). Determination of tropical deforestation rates and related carbon losses from 1990 to

2010. *Global Change Biology*, 20, 2540–2554. doi:10.1111/gcb.12605.

- Aide, T. M., Clark, M. L., Grau, H. R., López-Carr, D., Levy, M. A., Redo, D., ... Muñiz, M. (2013). Deforestation and reforestation of Latin America and the Caribbean (2001–2010). *Biotropica*, 45, 262–271. doi:10.1111/j.1744-7429.2012.00908.x.
- Amici, F., Aureli, F., & Call, J. (2008). Fission-fusion dynamics, behavioral flexibility, and inhibitory control in primates. *Current Biology*, 18, 1415–1419. Retrieved from <http://dx.doi.org/10.1016/j.cub.2013.06.020>
- Anderson, J., Rowcliffe, J. M., & Cowlishaw, G. (2007). Does the matrix matter? A forest primate in a complex agricultural landscape. *Biological Conservation*, 135, 212–222. Retrieved from <http://dx.doi.org/10.1016/j.biocon.2006.10.022>
- Argueta Rivas, N. A., & Rivera Hernández, G. M. (2004). Uso de hábitats del mono araña (*Ateles geoffroyi*) en el área natural protegida Normandia, Usulután, El Salvador (Doctoral dissertation, Universidad de El Salvador).
- Arroyo-Rodríguez, V., Cuesta-del Moral, E., Mandujano, S., Chapman, C. A., Reyna-Hurtado, R., & Fahrig, L. (2013). Assessing habitat fragmentation effects for primates: The importance of evaluating questions at the correct scale. In: L. Marsh, & C. A. Chapman (Eds.). *Primates in fragments: Complexity and resilience* (pp. 503–523). New York, NY: Springer.
- Arroyo-Rodríguez, V., & Mandujano, S. (2006). Forest fragmentation modifies habitat quality for *Alouatta palliata*. *International Journal of Primatology*, 27, 1079–1096. doi:10.1007/s10764-006-9061-0.
- Arroyo-Rodríguez, V., & Mandujano, S. (2009). Conceptualization and measurement of rainforest fragmentation from the primates' perspective. *International Journal of Primatology*, 30, 497–514. doi:10.1007/s10764-009-9355-0.
- Arroyo-Rodríguez, V., Melo, F. P. L., Martínez-Ramos, M., Bongers, F., Chazdon, R., Meave, J. A., ... Tabarelli, M. (2017). Multiple successional pathways in human-modified tropical landscapes: New insights from forest succession, forest fragmentation and landscape ecology research. *Biological Reviews*, 92, 326–340. doi:10.1111/brv.12231.
- Arroyo-Rodríguez, V., Pineda, E., Escobar, F., & Benítez-Malvido, J. (2009). Value of small patches in the conservation of plant-species diversity in highly fragmented rainforest. *Conservation Biology*, 23, 729–739. doi:10.1111/j.1523-1739.2008.01120.x.
- Asensio, N., Arroyo-Rodríguez, V., Dunn, J. C., & Cristóbal-Azkarate, J. (2009). Conservation value of landscape supplementation for howler monkeys living in forest patches. *Biotropica*, 41, 768–773. doi:10.1111/j.1744-7429.2009.00533.x.
- Baranga, D., Basuta, G. I., Teichroeb, J. A., & Chapman, C. A. (2012). Crop raiding patterns of solitary and social groups of red-tailed monkeys on cocoa pods in Uganda. *Tropical Conservation Science*, 5, 104–111.
- Bicca-Marques, J. C., & Calegario-Marques, C. (1995). Locomotion of black howlers in habitat with discontinuous canopy. *Folia Primatologica*, 64, 55–61. doi:10.1159/000156833.
- Boyle, S. A., & Smith, A. T. (2010). Can landscape and species characteristics predict primate presence in forest fragments in the Brazilian Amazon? *Biological Conservation*, 143,

- 1134–1143. Retrieved from <http://dx.doi.org/10.1016/j.biocon.2010.02.008>
- Carretero-Pinzón, X., Defler, T. R., McAlpine, C. A., & Rhodes, J. R. (2016). What do we know about the effect on patch size on primate species across life history traits? *Biodiversity and Conservation*, *25*, 37–66. doi:10.1007/s10531-015-1028-z.
- Chapman, C. A., Chapman, L. J., & Glander, K. E. (1989). Primate populations in northwestern Costa Rica: Potential for recovery. *Primate Conservation*, *10*, 37–44.
- Chaves, O. M., & Bicca-Marques, J. C. (2017). Crop feeding by brown howlers (*Alouatta guariba clamitans*) in forest fragments: The conservation value of cultivated species. *International Journal of Primatology*, *38*, 263–281. doi:10.1007/s10764-016-9927-8.
- Chaves, O. M., Stoner, K. E., Ángeles-Campos, S., & Arroyo-Rodríguez, V. (2011a). Wood consumption by Geoffroy's spider monkeys and its role in mineral supplementation. *PLoS One*, *6*(9): e25070. Retrieved from <http://dx.doi.org/10.1371/journal.pone.0025070>
- Chaves, O. M., Stoner, K. E., Arroyo-Rodríguez, V., & Estrada, A. (2011b). Effectiveness of spider monkeys (*Ateles geoffroyi vellosus*) as seed dispersers in continuous and fragmented rainforests in southern Mexico. *International Journal of Primatology*, *32*, 177–192. doi:10.1007/s10764-010-9460-0.
- Chaves, O. M., Stoner, K. E., & Arroyo-Rodríguez, V. (2012). Differences in diet between spider monkey groups living in forest fragments and continuous forest in Lacandona, Mexico. *Biotropica*, *44*, 105–113. doi:10.1111/j.1744-7429.2011.00766.x.
- da Silva, L. G., Ribeiro, M. C., Hasui, E., da Costa, C. A., & da Cunha, R. G. T. (2015). Patch size, functional isolation, visibility and matrix permeability influences Neotropical primate occurrence within highly fragmented landscapes. *PLoS One*, *10*, e0114025. doi:10.1371/journal.pone.0114025.
- Díaz, S., Fargione, J., Chapin, F. S. III, & Tilman, D. (2006). Biodiversity loss threatens human well-being. *PLoS Biology*, *4*, e277. doi:10.1371/journal.pbio.0040277.
- Di Fiore, A., Link, A., & Campbell, C. J. (2011). The Atelines: Behavioral and socioecological diversity in a New World radiation. In: C. Campbell, A. Fuentes, K. C. MacKinnon, M. Panger, & S. K. Beader (Eds.). *Primates in perspective* 2nd ed. (pp. 155–188). Oxford, England: Oxford University Press.
- Dunning, J. B., Danielson, B. J., & Pulliam, R. (1992). Ecological processes that affect populations in complex landscapes. *Oikos*, *65*, 169–175.
- Estrada, A., Garber, P. A., Rylands, A. B., Roos, C., Fernandez-Duque, E., Di Fiore, A., ... Li, B. (2017). Impending extinction crisis of the world's primates: Why primates matter. *Science Advances*, *3*, e1600946. doi:10.1126/sciadv.1600946.
- Estrada, A., Raboy, B. E., & Oliveira, L. C. (2012). Agroecosystems and primate conservation in the tropics: a review. *American Journal of Primatology*, *74*, 696–711. doi:10.1002/ajp.22033.
- Estrada, A., Saenz, J., Harvey, C., Naranjo, E., Muñoz, D., & Rosales-Meda, M. (2006). Primates in agroecosystems: Some agricultural practices in Mesoamerican landscapes. In: A. Estrada, P. A. Garber, M. S. M. Pavelka, & M. Luecke (Eds.). *New perspectives in the study of Mesoamerican primates: Distribution, ecology, behaviour and conservation* (pp. 437–470). New York, NY: Springer.
- Fahrig, L. (2013). Rethinking patch size and isolation effects: the habitat amount hypothesis. *Journal of Biogeography*, *40*, 1649–1663. doi:10.1111/jbi.12130.
- Feeley, K. (2005). The role of clumped defecation in the spatial distribution of soil nutrients and the availability of nutrients for plant uptake. *Journal of Tropical Ecology*, *21*, 99–102. doi:10.1017/S0266467404001701.
- Felton, A. M., Felton, A., Lindenmayer, D. B., & Foley, W. J. (2009a). Nutritional goals of wild primates. *Functional Ecology*, *23*, 70–78. doi:10.1111/j.1365-2435.2008.01526.x.
- Felton, A. M., Felton, A., Wood, J. T., Foley, W. J., Raubenheimer, D., Wallis, I. R., & Lindenmayer, D. B. (2009b). Nutritional ecology of *Ateles chamek* in lowland Bolivia: How macronutrient balancing influences food choices. *International Journal of Primatology*, *30*, 675–696. doi:10.1007/s10764-009-9367-9.
- Ford, S., & Davis, L. (1992). Systematics and body size: Implications for feeding adaptations in New World monkeys. *American Journal of Primatology*, *24*, 723–741. doi:10.1002/ajpa.1330880403.
- Franklin, J. F., & Lindenmayer, D. B. (2009). Importance of matrix habitats in maintaining biological diversity. *Proceedings of the National Academy of Science of the United States of America*, *106*, 349–350. doi:10.1073/pnas.0812016105.
- Garber, P. A., Estrada, A., & Pavelka, M. S. M. (2006). New perspective in the study of Mesoamerican Primates: Concluding comments and conservation priorities. In: A. Estrada, P. A. Garber, M. S. M. Pavelka, & M. Luecke (Eds.). *New perspectives in the study of Mesoamerican primates: Distribution, ecology, behaviour and conservation* (pp. 489–511). New York, NY: Springer.
- Gentry, A. H. (1982). Patterns of Neotropical plant species diversity. *Evolutionary Biology*, *15*, 1–85.
- González-Zamora, A., Arroyo-Rodríguez, V., Chaves, O. M., Sánchez-López, S., Stoner, K. E., & Riba-Hernández, P. (2009). Diet of spider monkeys (*Ateles geoffroyi*) in Mesoamerica: Current knowledge and future directions. *American Journal of Primatology*, *71*, 8–20. doi:10.1002/ajp.20625.
- González-Zamora, A., Arroyo-Rodríguez, V., Oyama, A. K., Sork, V., Chapman, C. A., & Stoner, K. E. (2012). Sleeping sites and latrines of spider monkeys in continuous and fragmented rainforests: implications for seed dispersal and forest regeneration. *PLoS One*, *7* (10), e46852. Retrieved from <http://dx.doi.org/10.1371/journal.pone.0046852>
- Graham, T. L., Matthews, H. D., & Turner, S. E. (2016). A global-scale evaluation of primate exposure and vulnerability to climate change. *International Journal of Primatology*, *37*, 158–174. doi:10.1007/s10764-016-9890-4.
- Harris, T. R., & Chapman, C. A. (2007). Variation in diet and ranging of black and white colobus monkeys in Kibale National Park, Uganda. *Primates*, *48*, 208–221. doi:10.1007/s10329-006-0036-8.
- Hernández-Ruedas, M. A., Arroyo-Rodríguez, V., Meave, J. A., Martínez-Ramos, M., Ibarra-Manríquez, G., Martínez, E., ... Santos, B. A. (2014). Conserving tropical tree diversity and forest structure: The value of small rainforest patches in moderately-managed landscapes. *PLoS One*, *9* (6), e98931. Retrieved from <http://dx.doi.org/10.1371/journal.pone.0098931>

- Hockings, K. J., Yamakoshi, G., & Matsuzawa, T. (2017). Dispersal of a human-cultivated crop by wild chimpanzees (*Pan troglodytes verus*) in a forest–farm matrix. *International Journal of Primatology*, *38*, 172–193. doi:10.1007/s10764-016-9924-y.
- Jacob, A. L., Vaccaro, I., Sengupta, R., Hartter, J., & Chapman, C. A. (2008). Integrating landscapes that have experienced rural depopulation and ecological homogenization into tropical conservation planning. *Tropical Conservation Science*, *1*, 307–320. doi:abs/10.1177/194008290800100402.
- Marsh, L. K., Chapman, C. A., Arroyo-Rodríguez, V., Cobden, A. K., Dunn, J. C., Gabriel, D., . . . Wasserman, M. D. (2013). Primates in fragments 10 years later: Once and future goals. In: L. Marsh, & C. A. Chapman (Eds.). *Primates in fragments: Complexity and Resilience* (pp. 503–523). Developments in Primatology: Progress and Prospects. New York: Springer.
- Martínez-Ramos, M., Pingarróni, A., Rodríguez-Velázquez, J., Toledo-Chelala, L., Zermeño-Hernández, I., & Bongers, F. (2016). Natural forest regeneration and ecological restoration in human-modified tropical landscapes. *Biotropica*, *48*, 745–757. doi:10.1111/btp.12382.
- Melo, F. P. L., Arroyo-Rodríguez, V., Fahrig, L., Martínez-Ramos, M., & Tabarelli, M. (2013). On the hope for biodiversity-friendly tropical landscapes. *Trends in Ecology and Evolution*, *28*, 462–468. Retrieved from <http://dx.doi.org/10.1016/j.tree.2013.01.001>
- Mendenhall, C. D., Frishkoff, L. O., Santos-Barrera, G., Pacheco, J., Mesfun, E., Quijano, F. M., . . . Pringl, R. M. (2014). Countryside biogeography of Neotropical reptiles and amphibians. *Ecology*, *95*, 856–870. doi:10.1890/12-2017.1.
- Michalski, F., & Peres, C. A. (2005). Anthropogenic determinants of primate and carnivore local extinctions in a fragmented forest landscape of southern Amazonia. *Biological Conservation*, *124*, 383–396. Retrieved from <http://dx.doi.org/10.1016/j.biocon.2005.01.045>
- Milton, K. (1981). Food choice and digestive strategies of two sympatric primate species. *The American Naturalist*, *117*, 476–495.
- Nekaris, K. A. I., Poindexter, S., Reinhardt, K. D., Sigaud, M., Cabana, F., Wirdateti, W., & Nijman, V. (2017). Coexistence between Javan Slow Lorises (*Nycticebus javanicus*) and humans in a dynamic agroforestry landscape in west Java, Indonesia. *International Journal of Primatology*, *38*, 303–320. doi:10.1007/s10764-017-9960-2.
- Omeja, P., Lawes, M. J., Corriveau, A., Valenta, K., Sarkar, D., Paim, F. P., & Chapman, C. A. (2016). Recovery of the animal and plant communities across large scales in Kibale National Park, Uganda. *Biotropica*, *48*, 770–729. doi:10.1111/btp.12360.
- Perfecto, I., & Vandermeer, J. (2010). The agroecological matrix as alternative to the land-sparing/agriculture intensification model. *Proceedings of the National Academy of Sciences of the United States of America*, *107*, 5786–5791. doi:10.1073/pnas.0905455107.
- Pozo-Montuy, G., Serio-Silva, J. C., Chapman, C. A., & Bonilla-Sánchez, Y. M. (2013). Resource use in a landscape matrix by an arboreal primate: Evidence of supplementation in black howlers (*Alouatta pigra*). *International Journal of Primatology*, *34*, 714–731. doi:10.1007/s10764-013-9691-y.
- Prevedello, J. A., & Vieira, M. V. (2010). Does the type of matrix matter? A quantitative review of the evidence. *Biodiversity and Conservation*, *5*, 1205–1223. doi:10.1007/s10531-009-9750-z.
- Ramos-Fernández, G., & Ayala-Orozco, B. (2003). Population size and habitat use of spider monkeys in Punta Laguna, México. In: L. Marsh, & C.A. Chapman (Eds.). *Primates in fragments: Ecology and conservation* (pp. 191–210). New York, NY: Springer.
- Ramos-Fernandez, G., Smith Aguilar, S. E., Schaffner, C. M., Vick, L. G., & Aureli, F. (2013). Site fidelity in space use by spider monkeys (*Ateles geoffroyi*) in the Yucatan Peninsula, Mexico. *PLoS One*, *8*(5), e62813. doi:10.1371/journal.pone.0062813.
- Ramos-Fernández, G., & Wallace, R. B. (2008). Spider monkey conservation in the twenty-first century: Recognizing risks and opportunities. In: C. J. Campbell (ed.) *Spider monkeys: Behavior, ecology and evolution of the genus Ateles* (pp. 351–376). Cambridge, England: Cambridge University Press.
- Revilla, E., Wiegand, T., Palomares, F., Ferreras, P., & Delibes, M. (2004). Effects of matrix heterogeneity on animal dispersal: From individual behavior to metapopulation-level parameters. *The American Naturalist*, *164*, 130–153. doi:10.1086/424767.
- Reynolds, V., Wallis, J., & Kyamanywa, R. (2003). Fragments, sugar and chimpanzees in Masindi District, Western Uganda. In: L. Marsh (ed.) *Primates in fragments: Ecology and conservation* (pp. 309–320). New York, NY: Springer.
- Ricketts, T. H. (2001). The matrix matters: Effective isolation in fragmented landscapes. *The American Naturalist*, *158*, 87–99.
- Rothman, J. M., Van Soest, P. J., & Pell, A. N. (2006). Decaying wood is asodium source formountain gorillas. *Biology Letters*, *2*, 321–324. doi:10.1098/rsbl.2006.0480.
- Santos, B. A., Peres, C. A., Oliveira, M. A., Grillo, A., Alves-Costa, C. P., & Tabarelli, M. (2008). Drastic erosion in functional attributes of tree assemblages in Atlantic forest fragments of northeastern Brazil. *Biological Conservation*, *141*, 249–260. Retrieved from <http://dx.doi.org/10.1016/j.biocon.2007.09.018>
- Serio-Silva, J. C. (2006). Las Islas de los Changos (the Monkey Islands): The economic impact of ecotourism in the region of Los Tuxtlas, Veracruz, Mexico. *American Journal of Primatology*, *68*, 499–506. doi:10.1002/ajp.20245.
- Schaffner, C. M., Rebecchini, L., Ramos-Fernandez, G., Vick, L. G., & Aureli, F. (2012). Spider monkeys (*Ateles geoffroyi yucatanensis*) cope with the negative consequences of hurricanes through changes in diet, activity budget, and fission–fusion dynamics. *International Journal of Primatology*, *33*, 922–936. doi:10.1007/s10764-012-9621-4.
- Snaithe, T. V., & Chapman, C. A. (2005). Towards an ecological solution to the folivores paradox: Patch depletion as an indicator of within-group scramble competition in red colobus monkeys. *Behavioural Ecology and Sociobiology*, *59*, 185–190. doi:10.1007/s00265-005-0023-x.
- Tabarelli, M., Peres, C. A., & Melo, F. P. L. (2012). The ‘few winners and many losers’ paradigm revisited: emerging prospects for tropical forest biodiversity. *Biological Conservation*, *155*, 136–140. doi:10.1016/j.biocon.2012.06.020.
- Trevelin, L. C., Port-Carvalho, M., Silveira, M., & Morell, E. (2007). Abundance, habitat use and diet of *Callicebus nigrifrons* Spix (Primates, Pitheciidae) in Cantareira State Park, Sao Paulo, Brazil. *Revista Brasileira de Zoologia*, *24*, 1071–1077. Retrieved from <http://dx.doi.org/10.1590/S0101-81752007000400026>

- Tscharntke, T., Tylianakis, J. M., Rand, T. A., Didham, P. K., Fahrig, L., & Bátor, P. (2012). Landscape moderation of biodiversity patterns and processes-eight hypotheses. *Biological Reviews*, *87*, 661–685. doi:10.1111/j.1469-185X.2011.00216.x.
- Tubelis, D. P., Cowling, A., & Donnelly, C. (2004). Landscape supplementation in adjacent savannas and its implications for the design of corridors for forest birds in the central Cerrado, Brazil. *Biological Conservation*, *118*, 353–364. Retrieved from <http://dx.doi.org/10.1016/j.biocon.2003.09.014>
- Wallace, R. B. (2008). Factors influencing spider monkey habitat use and ranging patterns. In: C. A. Campbell (ed.) *Spider monkeys: Behavior, ecology and evolution of the genus Ateles* (pp. 138–154). Cambridge, England: Cambridge University Press.
- Watling, J. L., Nowakowski, A. J., Donnelly, M. A., & Orrock, J. L. (2011). Meta-analysis reveals the importance of matrix composition for animals in fragmented habitat. *Global Ecology and Biogeography*, *20*, 209–217. doi:10.1111/j.1466-8238.2010.00586.x.
- Wolfe, L. D. (1991). Macaques, pilgrims, and tourist revisited. *National Geographic Research and Education*, *7*, 241.
- Wright, S. J., & Muller-Landau, H. C. (2006). The future of tropical forest species. *Biotropica*, *38*, 287–301. doi:10.1111/j.1744-7429.2006.00154.x.