



Renal oncocytoma in a cat with chronic renal failure

Authors: Lee, Sora, Choi, Hyun-Ji, Lee, Han-Byul, Jo, Sung-Min, Mun, Ji-hye, et al.

Source: Journal of Feline Medicine and Surgery Open Reports, 3(1)

Published By: SAGE Publishing

URL: <https://doi.org/10.1177/2055116917693491>

BioOne Complete (complete.BioOne.org) is a full-text database of 200 subscribed and open-access titles in the biological, ecological, and environmental sciences published by nonprofit societies, associations, museums, institutions, and presses.

Your use of this PDF, the BioOne Complete website, and all posted and associated content indicates your acceptance of BioOne's Terms of Use, available at www.bioone.org/terms-of-use.

Usage of BioOne Complete content is strictly limited to personal, educational, and non - commercial use. Commercial inquiries or rights and permissions requests should be directed to the individual publisher as copyright holder.

BioOne sees sustainable scholarly publishing as an inherently collaborative enterprise connecting authors, nonprofit publishers, academic institutions, research libraries, and research funders in the common goal of maximizing access to critical research.



Renal oncocyoma in a cat with chronic renal failure

Sora Lee^{1,2}, Hyun-Ji Choi¹, Han-Byul Lee¹,
Sung-Min Jo¹, Ji-hye Mun¹ and Woo-Chan Son¹

Journal of Feline Medicine and Surgery Open Reports
1–5

© The Author(s) 2017

Reprints and permissions:

sagepub.co.uk/journalsPermissions.nav

DOI: 10.1177/2055116917693491

journals.sagepub.com/home/jfmsopenreports

This paper was handled and processed by the European Editorial Office (ISFM) for publication in *JFMS Open Reports*



Abstract

Case summary A 9-year-old male neutered domestic shorthair cat presented with anorexia. Ultrasonography showed an irregularly shaped hypoechoic mass in the cranial pole of the right kidney. Ultrasound-guided fine-needle aspiration of the renal mass was performed. Cytology revealed moderate cellularity smears composed of epithelial cell clusters, which consisted of an exclusive population of oncocyctic cells seen in sheets and papillary clusters along with abundant single cells. A moderate-to-abundant amount of densely stained granular cytoplasm with round nuclei and indistinct nucleoli was seen. The cytological diagnosis was renal oncocyctic neoplasm. CT and surgical resection revealed a firm tan mass in the right kidney. A final diagnosis of renal oncocyoma was made on the basis of histology, immunohistochemical staining profile (positive for cytokeratin, and negative for chromogranin A, neuron-specific enolase and vimentin) of neoplastic cells, together with the electronic microscopy results.

Relevance and novel information We believe that this is the first report of the cytological features of feline renal oncocyoma.

Accepted: 8 November 2016

Introduction

Primary renal tumours are uncommon and make up about 1.5–2.5% of all feline neoplasms.¹ In 1999, Henry et al reported 19 primary feline renal tumours that consisted of tubulopapillary or tubular carcinoma (n = 13), transitional cell carcinoma (n = 3), adenoma (n = 1), haemangiosarcoma (n = 1) and nephroblastoma (n = 1).² Feline renal leiomyosarcoma, squamous cell carcinoma and sarcomatoid renal cell carcinoma have also been sporadically reported.^{3–5} However, feline renal oncocyoma has not yet been reported. Oncocytes are large cylindrical or polyhedral cells characterised by abundant eosinophilic, granular cytoplasm, which is caused by the presence of large numbers of mitochondria. These cells are believed to be of epithelial origin.⁶ So far, feline oncocytomas have only been reported in the nasal cavity,⁷ salivary gland⁸ and nasopharyngeal lesion.⁹ However, renal oncocytomas were first reported in humans in 1942¹⁰ and in dogs in 2000.¹¹ Human renal oncocytomas are relatively common: 3–7% of all renal tumours vs two cases of canine renal oncocytomas.^{11–13}

Case description

A 9-year-old male neutered domestic shorthair cat was brought to the Irion Animal Hospital in Korea appearing anorexic. The cat was formerly diagnosed with chronic renal failure (IRIS stage 3) and had been treated with isotonic polyionic replacement fluid for several years. Its siblings died a few years previously from renal failure. Its haematological manifestations were unremarkable. Biochemical analysis of the blood with Vetest8008 (IDEXX Laboratories) revealed highly elevated concentrations of blood urea nitrogen (>130 mg/dl; reference interval [RI] 16–36 mg/dl), creatinine (7.5 mg/dl; RI

¹Asan Institute for Life Sciences and Department of Pathology, University of Ulsan College of Medicine, Asan Medical Center, Seoul, Korea

²Department of Clinical Pathology, Irion Animal Hospital, Seoul, Korea

Corresponding author:

Woo-Chan Son DVM, PhD, Department of Pathology, University of Ulsan College of Medicine, Asan Medical Center, Olympic-ro 43-gil, Songpa-gu, Seoul 05505, Korea
Email: wcon@amc.seoul.kr



Creative Commons Non Commercial CC-BY-NC: This article is distributed under the terms of the Creative Commons

Attribution-NonCommercial 3.0 License (<http://www.creativecommons.org/licenses/by-nc/3.0/>) which permits non-commercial use, reproduction and distribution of the work without further permission provided the original work is attributed as specified on the SAGE and Open Access pages (<https://us.sagepub.com/en-us/nam/open-access-at-sage>).

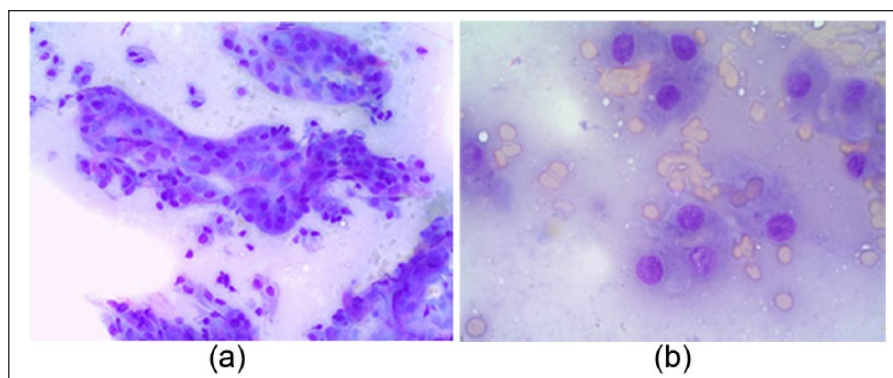


Figure 1 (a) Cytological examination revealed moderate cellularity smears composed of epithelial cell clusters consisting of an exclusive population of oncocytic cells seen in sheets and papillary clusters, along with abundant single cells (magnification $\times 40$). (b) Moderate-to-abundant densely stained granular cytoplasm with round nuclei and indistinct nucleoli (magnification $\times 100$)

0.8–2.4 mg/dl) and phosphate (8.8 mg/dl; RI 3.1–7.5 mg/dl). Urine specific gravity was 1.010 and urine protein creatinine ratio (URC) was 0.1 (Vettest8008; IDEXX Laboratories). Blood pressure was 140 mmHg.

Right renomegaly was noted on abdominal radiographs. Ultrasonography revealed an irregularly shaped mass that was hypoechoic to renal cortex and medulla at the cranial pole of the right kidney and a minimally hyperplastic lymph node in the cranial abdomen region. Ultrasound-guided fine-needle aspiration (FNA) of the renal mass was performed using a 23 G needle attached to a 10 ml syringe. Blood mixed particulate material was obtained and air dried, and 95% ethanol-fixed smears were then made and stained with Diff-Quik. The cranial abdominal lymph node was insufficiently large and surrounded with vasculatures for the performance of FNA. Cytological examination revealed moderate cellularity smears composed of epithelial cell clusters consisting of an exclusive population of oncocytic cells seen in sheets and papillary clusters, along with abundant single cells. A moderate-to-abundant amount of densely stained granular cytoplasm with round nuclei and indistinct nucleoli was seen. Intracellular eosinophilic materials were also found (Figure 1). A cytological diagnosis of renal oncocytic neoplasm was made. The differential diagnoses were oncocytoma, chromophobe carcinoma, clear cell renal cell carcinoma and neuroblastoma-associated renal cell carcinoma. Under general anaesthesia, a CT scan of the whole body was performed. The CT image indicated a heterogeneous, less contrast-enhanced kidney mass. No enlarged or atypical abdominal lymph nodes were found. Metastasis was not noted. Surgical removal was performed.

In gross appearance, the tumours were mahogany or dark reddish brown, well circumscribed and contained a central scar (approximate size 2.83 cm \times 2.2 cm \times 3.5 cm) (Figure 2).

The mass was sent to the Comparative Pathology Department of Asan Medical Center (Korea) for

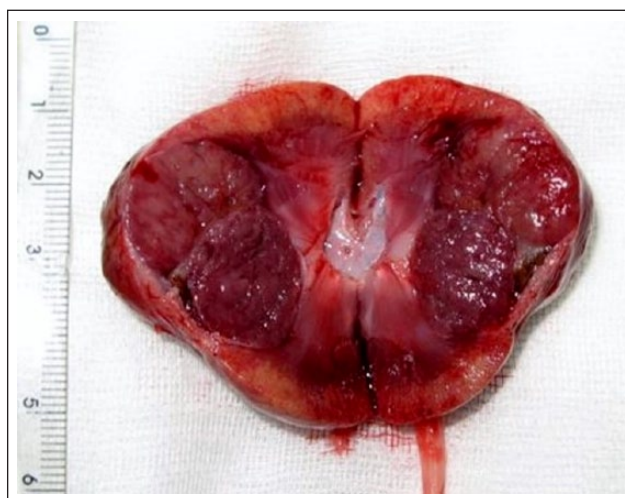


Figure 2 The tumours were mahogany/dark reddish brown, well circumscribed and contained a central scar (approximate size 2.83 cm \times 2.2 cm \times 3.5 cm). A rim of compressed normal renal parenchyma was found

histopathological examination. The tissues were fixed with 10% buffered formalin and embedded in paraffin; 5 μ m sections were stained with haematoxylin and eosin. Histologically, the tissue was composed of solid nests, anastomosing cords and closely packed glands separated by a delicate fibrovascular stroma. Individual neoplastic cells were cylindrical to polyhedral in shape, had distinct cell borders and contained moderate amounts of finely granular eosinophilic cytoplasm and round-to-oval nuclei (Figure 3). Replicate sections of selected tumour samples were used for immunohistochemistry. Commercially available antibodies against chromogranin (clone DAK-A3, 1:1600; Dako), cytokeratin (clone AE1/AE3, 1:400; NOVO), neuron-specific enolase (clone BBS/NC/VI-H14, 1:400; Dako) and vimentin (clone V9, 1:500; Zymed) were used, with various secondary polyclonal antibodies. Immunohistochemical staining was performed using a

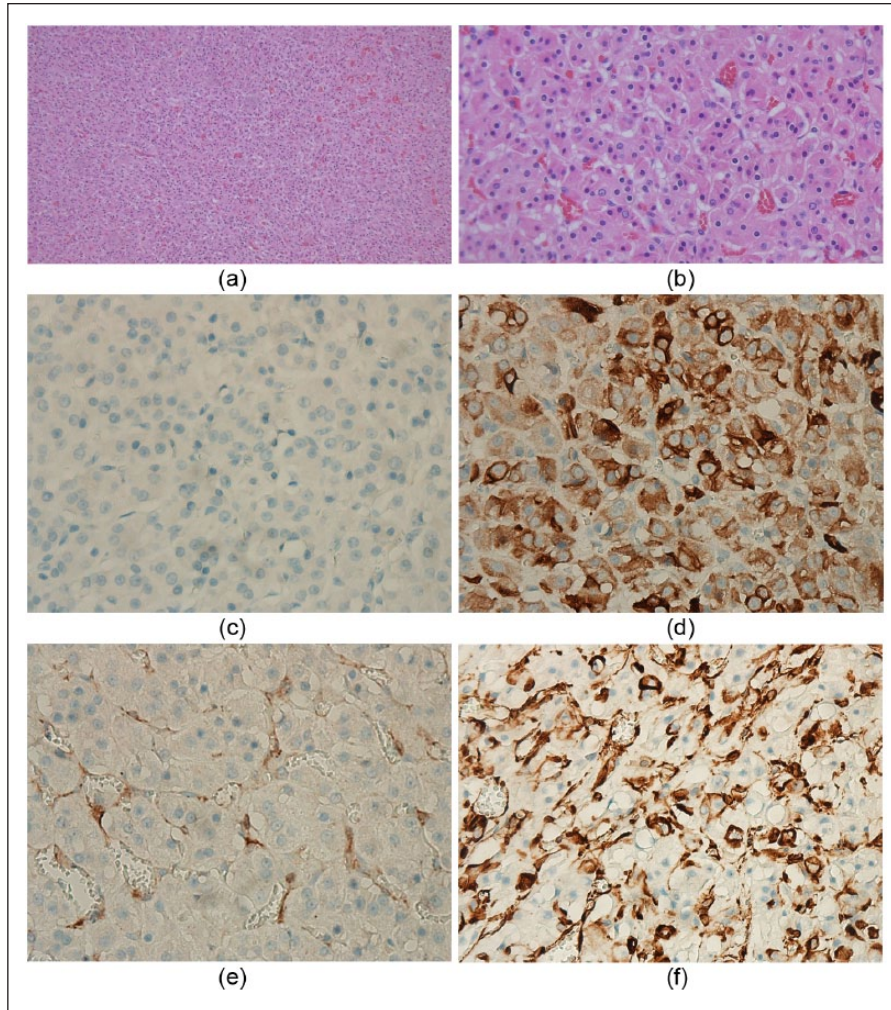


Figure 3 (a) The tissue was composed of solid nests, anastomosing cords and closely packed glands separated by a delicate fibrovascular stroma (haematoxylin and eosin, $\times 10$). (b) Individual neoplastic cells were cylindrical to polyhedral in shape, had distinct cell borders and contained moderate amounts of finely granular eosinophilic cytoplasm and round-to-oval nuclei (haematoxylin and eosin, $\times 40$). (c) Chromogranin negative (magnification $\times 40$). (d) Cytokeratin positive (magnification $\times 40$). (e) Neuron-specific enolase negative (magnification $\times 40$). (f) Vimentin negative (magnification $\times 40$)

BenchMark XT autoimmunostainer with OptiView DAB detection kit (Ventana Medical Systems) according to the manufacturer's instructions and using the reagent supplied with the kit. Immunohistochemically, the neoplastic cells were positive for cytokeratin, indicating epithelial origin. The neoplastic cells were negative for chromogranin A, neuron-specific enolase and vimentin, indicating that the origin was not mesenchymal or neuronal/neuroendocrine (Figure 3b).

Ancillary testing using an electron microscope (JEM-1400; Jeol) was performed on slices prepared from fixed formalin mass. Ultrastructurally, neoplastic cells were interconnected via junctional complexes and contained numerous round-to-oval, electron-dense mitochondria (Figure 4). On the basis of the immunohistochemical staining profile of the neoplastic cells, together with

electron microscopy results, a diagnosis of renal oncocytoma was made.

Discussion

The first case of human renal oncocytoma was reported by Zippel in 1942.¹⁰ The cytological features of renal oncocytoma have been described in several reports. Cytologically, smears from well-sampled human renal oncocytoma reveal numerous isolated cells or loose clusters with abundant, eosinophilic, granular cytoplasm, well-demarcated cell borders, and round nuclei with small or medium nucleoli.¹⁴ In the current case, the smear consisted of dyshesive cells and eosinophilic-to-basophilic granular cytoplasm, and most features were equivalent to human renal oncocytoma. However, some cells were also aggregated in tubular or papillary

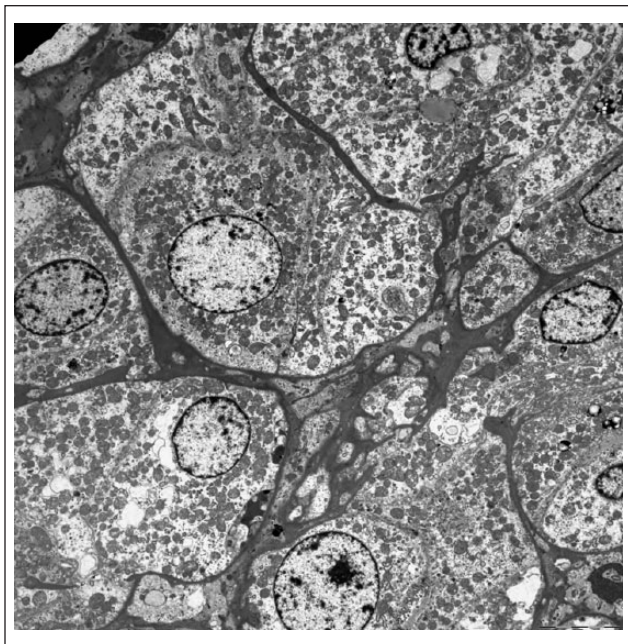


Figure 4 The neoplastic cells were interconnected via junctional complexes and contained numerous round-to-oval, electron dense mitochondria ($\times 2500$ electron microscope)

forms along with eosinophilic intracellular materials. These features have not yet been described in human renal oncocytoma.

Although renal oncocytomas are classified as 'benign' renal neoplasms according to the 2004 World Health Organization classification of renal tumours in human medicine,¹⁵ Mai et al recently reported two cases of human oncocytic renal cell carcinoma. Those tumours not only revealed cytological atypia and lymph node metastasis, but also showed similar immunological features to renal oncocytoma.¹⁶ Buergelt and Adjiri-Awere reported a canine bilateral renal oncocytoma that invaded the lumbar muscle.¹³ With this in mind, renal oncocytomas should be considered as having very low rather than no malignant potential, although the typical classification is benign. In the present case, the cat has been alive for years since its diagnosis. A slightly enlarged lymph node in the cranial abdomen could not be evaluated by CT scan, but the cranial abdominal lymph node is being evaluated ultrasonographically every 1–2 months. To date, the cat only manifests clinical signs associated with chronic renal failure.

Although oncocytoma has characteristic features and FNA is helpful for preoperative diagnosis, Jing and Christina reported a great degree of overlap in the cytological spectrum between renal oncocytoma and renal cell carcinomas with eosinophilic granular cytoplasm.¹⁴ This may impede accurate diagnosis in routine examination of FNA specimens, even although each tumour has classic cytological features.¹⁴ In human medicine, clinical

diagnostic dilemmas and the difficulty of cytological or histopathological differentiation of renal oncocytoma from chromophobe renal cell carcinoma still persist. In feline medicine, as renal cell carcinoma with eosinophilic granular cytoplasm has not been reported, a comparison was not possible. However, helpful information will be provided by ancillary immunohistochemical staining with electron microscopy examination in difficult cases, as in human medicine.

Conclusions

Cytological features of feline renal oncocytoma were oncocytic cells in sheets or clusters with abundant single cells. However, some cells were also aggregated in tubular or papillary forms along with eosinophilic intracellular materials. A moderate to abundant amount of densely stained granular cytoplasm with round nuclei and indistinct nucleoli was also noted. Most cytological features of feline renal neoplasia are equivalent to human renal oncocytoma. To the best of our knowledge, this is the first cytological description of feline renal oncocytoma. Further analyses of feline renal oncocytoma and feline renal cell carcinoma with eosinophilic granular cytoplasm are needed.

Funding The author(s) disclosed receipt of the following financial support for the research, authorship, and/or publication of this article: This work was supported by the Technology Innovation Program (10067737, Establishment of Risk management platform with aim to reduce attrition of new drugs and its service) funded by the Ministry of Trade, Industry & Energy (MI, Korea).

Conflict of interest The authors declared no potential conflicts of interest with respect to the research, authorship, and/or publication of this article.

References

- 1 Maxie MG. **Urinary system.** In: Pathology of domestic animals, 5th ed. Vol 2. London: Elsevier Saunders, 2007, pp 449–503.
- 2 Henry CJ, Turnquist SE, Smith A, et al. **Primary renal tumours in cats: 19 cases (1992–1998).** *J Feline Med Surg* 1999; 1: 165–170.
- 3 Dawn E and Natalie F. **Renal leiomyosarcoma in a cat.** *J Vet Diagn Invest* 2016; 28: 315–318.
- 4 Gómez Selgas A, Scase TJ and Foale RD. **Unilateral squamous cell carcinoma of the renal pelvis with hydronephrosis in a cat.** *J Feline Med Surg* 2014; 16: 183–188.
- 5 Gulbahar MY, Arsian HH, Gacar A, et al. **Sarcomatoid renal cell carcinoma with scant epithelial components in an Angora cat.** *N Z Vet J* 2013; 61: 362–366.
- 6 Chang A and Harawi SJ. **Oncocytes, oncocytosis, and oncocytic tumors.** *Pathol Annu* 1992; 27: 263–304.
- 7 Doughty RW, Brockman D, Neiger R, et al. **Nasal oncocytoma in a domestic shorthair cat.** *Vet Pathol* 2006; 43: 751–754.

- 8 Brocks BA, Peeters ME and Kimpfler S. **Oncocytoma in the mandibular salivary gland of a cat.** *J Feline Med Surg* 2008; 10: 188–191.
- 9 You MH, Kim YB, Woo GH, et al. **Nasopharyngeal oncocytoma in a cat.** *J Vet Diagn Invest* 2011; 23: 391–394.
- 10 Zippel L. **Zur kenntnis der onkocyten.** *Virchows Arch Pathol Anat* 1942; 308: 360–382.
- 11 Dempster AG, Delahunt B, Malthus AW, et al. **The histology and growth kinetics of canine renal oncocytoma.** *J Comp Pathol* 2000; 123: 294–298.
- 12 Akhtar M and Kott E. **Oncocytoma of kidney.** *Urology* 1979; 4: 397–400.
- 13 Buergelt CD and Adjiri-Awere A. **Bilateral renal oncocytoma in a Greyhound dog.** *Vet Pathol* 2000; 37: 2.
- 14 Jing L and Christina VF. **Can renal oncocytomas be distinguished from renal cell carcinoma on fine-needle aspiration specimens?** *Cancer (Cancer Cytopathol)* 2001; 93: 390–397.
- 15 Eble JN, Sauter G, Epstein JL, et al. World Health Organization classification of tumours. Pathology and genetics of tumours of the urinary system and male genital organs. Lyon: IARC Press, 2004.
- 16 Mai KT, Bicamumpaka C, Robertson SJ, et al. **Oncocytic renal cell carcinoma with immunohistochemical properties of renal oncocytoma.** *Pathol Res Pract* 2009; 205: 119–124.