



## **Phylogeography of Steller sea lions: relationships among climate change, effective population size, and genetic diversity**

Authors: Phillips, C. D., Gelatt, T. S., Patton, J. C., and Bickham, J. W.

Source: Journal of Mammalogy, 92(5) : 1091-1104

Published By: American Society of Mammalogists

URL: <https://doi.org/10.1644/10-MAMM-A-305.1>

---

BioOne Complete ([complete.BioOne.org](https://complete.BioOne.org)) is a full-text database of 200 subscribed and open-access titles in the biological, ecological, and environmental sciences published by nonprofit societies, associations, museums, institutions, and presses.

Your use of this PDF, the BioOne Complete website, and all posted and associated content indicates your acceptance of BioOne's Terms of Use, available at [www.bioone.org/terms-of-use](http://www.bioone.org/terms-of-use).

Usage of BioOne Complete content is strictly limited to personal, educational, and non - commercial use. Commercial inquiries or rights and permissions requests should be directed to the individual publisher as copyright holder.

---

BioOne sees sustainable scholarly publishing as an inherently collaborative enterprise connecting authors, nonprofit publishers, academic institutions, research libraries, and research funders in the common goal of maximizing access to critical research.

## Phylogeography of Steller sea lions: relationships among climate change, effective population size, and genetic diversity

C. D. PHILLIPS,\* T. S. GELATT, J. C. PATTON, AND J. W. BICKHAM

Center for the Environment, Purdue University, West Lafayette, IN 47907, USA (CDP, JCP, JWB)

Department of Forestry and Natural Resources, Purdue University, West Lafayette, IN 47907, USA (CDP, JCP, JWB)

National Marine Fisheries Service, Alaska Fisheries Science Center, National Marine Mammal Laboratory, 7600 Sand Point Way, NE, Seattle, WA 98114, USA (TSG)

\* Correspondent: [caleb.phillips@ttu.edu](mailto:caleb.phillips@ttu.edu)

The biology of the Steller sea lion (*Eumetopias jubatus*) has been the subject of intense scientific investigation. This is primarily due to the rapid decline of population size in the western part of the species' range since the 1970s and the subsequent Threatened and Endangered species listings that had direct impact on the management of one of the world's largest fisheries. The Steller sea lion has emerged as an indicator species representing the environmental health of the North Pacific Ocean and Bering Sea. In this study, to better understand the historical processes that have culminated in the extant populations of *E. jubatus*, a large genetic data set consisting of 3 mitochondrial regions for >1,000 individuals was analyzed from multiple phylogeographic and demographic perspectives. The results describe the role of climate change in shaping the population structure of *E. jubatus*. Climatically associated historical processes apparently involved differential demographic responses to ice ages (and putative glacial vicariance) dependent on population size. Ice ages during times of small effective population size promoted restricted gene flow and fragmentation, and ice ages occurring during times of large population size promoted gene flow and dispersal. These results illustrate that effective population size has a profound effect on how species respond to climate change, an observation with obvious implications for large mammals and endangered species under the present conditions of imminent anthropogenically caused climate change. In addition, the results confirm previous observations of strongly biased historic and contemporary gene flow involving dispersal from west to east. Furthermore, phylogenetic patterns in combination with available fossil data suggest the potential of an Asian origin of *E. jubatus*. The results of this study provide a detailed scenario for the history that has shaped contemporary populations of *E. jubatus*.

Key words: climate change, demography, environment, long-term effective population size, phylogeography

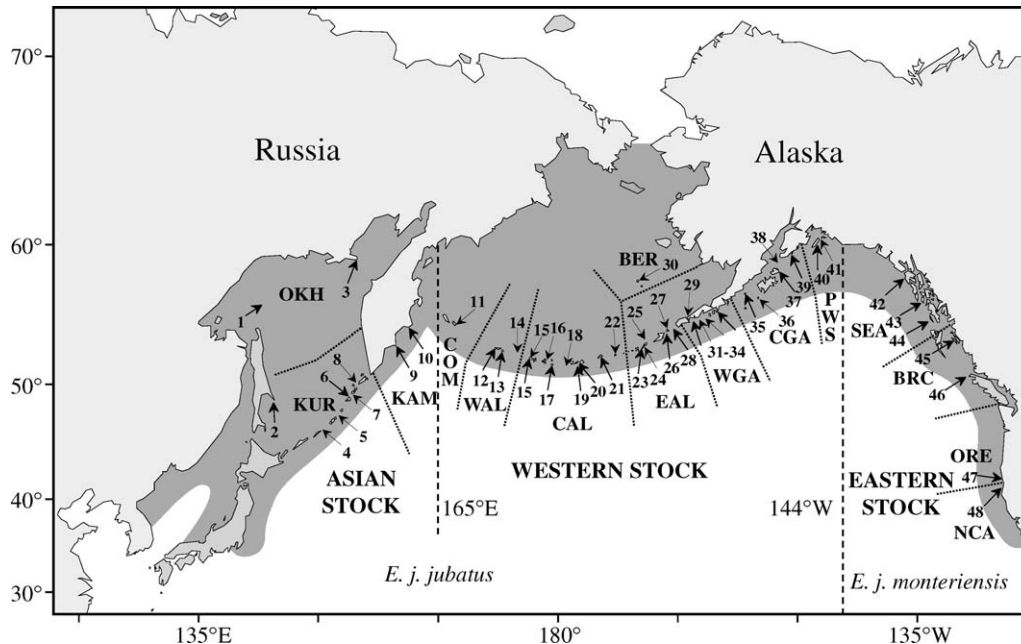
© 2011 American Society of Mammalogists

DOI: 10.1644/10-MAMM-A-305.1

An intensive research effort into the biology of the endangered Steller sea lion (*Eumetopias jubatus*) has resulted in significant advances in our understanding of the evolutionary history, population structure, demographic trends, physiology, ecology, and evolution of this species (Baker et al. 2005; Bickham et al. 1996, 1998; Harlin-Cognato et al. 2006; Hoffman et al. 2006, 2009; Kenyon and Rice 1961; Loughlin et al. 1987, 1992; O'Corry-Crowe et al. 2006; Phillips et al. 2009a, 2009b; Trites and Donnelly 2003). For example, population genetic and phylogenetic investigations have demonstrated clear population structure at rookery, region, and stock levels, with phylogenetic delineation increasing at broader geographic groupings (Baker et al. 2005; Bickham et al. 1996, 1998; O'Corry-Crowe et al. 2006). In addition, a population decline of >80% resulted in listing the western stock as endangered under the United States. However, the eastern stock has maintained stable numbers over recorded time

but still retains a threatened listing. The determination of major coincident patterns in genetics, morphology, and demography recently has led to the formal description of these 2 forms as the subspecies *E. j. jubatus* (consisting of the Asian and western stocks) and *E. j. monteriensis* (eastern stock—Phillips et al. 2009a; Fig. 1). Refining our understanding of the processes that ultimately led to the current population structure can enhance our existing knowledge of mammalian evolution and guide the future management of Steller sea lions in the North Pacific and Bering Seas. As a result of extensive research conducted to support Endangered Species Act listing, we have a relatively broad understanding of many aspects of the biology and life-history characteristics of *E. jubatus* and a preliminary





**FIG. 1.**—Map of the distribution of *Eumetopias jubatus* and recognized subspecies. Abbreviations for the regions are as follows: OKH = Sea of Okhotsk, KUR = Kuril Islands, KAM = Kamchatka Peninsula, COM = Commander Islands, WAL = western Aleutian Islands, CAL = central Aleutian Islands, EAL = eastern Aleutian Islands, WGA = western Gulf of Alaska, BER = Bering Sea, CGA = central Gulf of Alaska, PWS = Prince William Sound, SEA = southeastern Alaska, BRC = British Columbia, ORE = Oregon, NCA = northern California. Rookeries included in this study are indicated by arrows and numbered following Appendix I.

understanding of how the evolutionary history of the species has influenced observed contemporary genetic patterns. Given the distribution of *E. jubatus* around the North Pacific Rim (within a region where glacial movement has been particularly dynamic throughout the Pleistocene—Mann and Peteet 1994; Fig. 1) and the dependence of *E. jubatus* on linearly distributed rookeries for breeding and birthing (many of which are within areas known to have been covered by ice during previous glacial maxima—Grosswald and Hughes 2002; Mann and Peteet 1994; Westgate et al. 2001), the hypothesis of Harlin-Cognato et al. (2006) that genetic patterns are in part the result of phylogeographic occurrences driven by climatic change (changes in the extent of ice cover, glacial vicariance, and sea-level changes) is reasonable. Furthermore, the presence of a detailed and accurate phylogeographic history encompassing the entire range of *E. jubatus* is necessary to provide evolutionary context for the life-history characteristics documented in other studies.

The well-defined population model of *E. jubatus* is characterized by rookery dependence with high female philopatry. This information, in combination with a thorough genetic sampling of individuals through years of fieldwork, is useful for interpreting genetic patterns from a population genetics or phylogeographic perspective. In addition, a detailed working hypothesis of global climatic history based on ice core data (Loulergue et al. 2008) provides logical a priori phylogeographic expectations and a potential to build accurate phylogeographic inferences about *E. jubatus*.

We used a large genetic database of *E. jubatus* of >1,000 individuals (approximately 1.63% of the female population from 79% of known rookeries). Sequence data are taken from

2 mitochondrial genes, cytochrome *b* (*Cytb*) and nicotinamide adenine dinucleotide dehydrogenase 1 (*ND1*), and the hyper-variable region 1 (HVRI) of the control region. Evolutionary signal is maximized from this data set by recovering cryptically recurrent substitutions from HVRI data (Phillips et al. 2009b). The end result is a robust and highly resolved genetic data set. Multiple analytical approaches have been used to test the major hypothesis that climate change has shaped contemporary genetic patterns of diversity and divergence in *E. jubatus*. These analyses help develop a long-term perspective on gene flow and elucidate the geographic center of origin of the species.

## MATERIALS AND METHODS

*Sampling and molecular methodologies.*—All tissue samples used in this study were hind-flipper punches taken from pups biopsied at natal rookeries a few weeks after birth and were obtained in accordance with guidelines of the American Society of Mammalogists (Gannon et al. 2007) under Marine Mammal Protection Act permit 782-1532-02. Sampling included specimens from 48 of 61 total known breeding rookeries distributed across the North Pacific Rim (Fig. 1). Because of strong natal philopatry observed in *E. jubatus*, this sampling strategy leads to a high probability that pup haplotypes observed at rookeries are the result of breeding at that particular rookery.

Sequence data for the complete *Cytb* (1,140 base pairs [bp]) and HVRI (238 bp) for 1,021 individuals were available from previous studies (Baker et al. 2005; Harlin-Cognato et al. 2006; Phillips et al. 2009b). In addition to these *Cytb* and

HVRI data, at least 1 individual representing each observed HVRI/*Cytb* haplotype combination also was sequenced for the entire *NDI* gene (957 bp). Because a large proportion of total observed HVRI/*Cytb* composite haplotypes were observed at a low frequency ( $69\% \leq 5$  observations), the sample subsets of individuals for *NDI* likely provided an accurate overall depiction of the distribution of *NDI* haplotypes and provided a reasonable alternative to sequencing all 1,021 samples for *NDI*. Polymerase chain reactions for *NDI* were performed as described by Baker et al. (2005) using primers LGL 287 (CCTACGTGATCTGAGTTCAGACC) and LGL 563 (GG-TATGAGCCCGATAGCTTA) with thermal profiles consisting of an initial denaturing cycle of 95°C for 5 min followed by 32 cycles of 95°C for 30 s, 50°C for 30 s, and 72°C for 2.5 min. For sequencing, internal sequencing primers Ejub-ND1-434seq(F) (CCATTATTCTCCTGTCAGTAC) and Ejub-ND1-636(R) (GGCCTGCTGCATATTCTACG) were used with a 50°C annealing temperature. Reactions were cleaned by centrifugation through Sephadex G-50 columns and then sequenced on an ABI 3730 platform (Applied Biosystems, Warrington, United Kingdom).

The *NDI* sequences were aligned in Sequencher 4.8 (GeneCodes Corporation, Ann Arbor, Michigan) and examined for the presence of insertions–deletions and stop codons in the coding region to check for any signs that nuclear inserts had been sequenced incidentally. A neighbor-joining tree was constructed in PAUP\* version 4.0b10 (Swofford 2003) to identify all unique *NDI* haplotypes.

**Data matrices construction and selection.**—To maximize phylogeographic signal from the mitochondrial DNA (mtDNA) data set an approach involving the concatenation of HVRI and coding region sequences, followed by the preferential weighting of coding region data and subsequent phylogeny construction, was used—similar to that of Bandelt et al. (2002)—to characterize HVRI recurrent substitution. Characterized recurrent substitutions were incorporated into the data matrix as pseudo positions at the end of the file, and the original position was removed. Phillips et al. (2009b) demonstrated little indication of recurrent substitution in mtDNA coding regions of *E. jubatus*, justifying the application of this strategy. Using this method basal tree structure was determined largely by coding region data, areas unlikely to be subject to homoplasy at the taxonomic level and lineage age considered here, and resolution at more terminal branching was improved by the disclosure of recurrent substitution within HVRI. To confirm the appropriateness of this method an Approximately Unbiased (AU) test was performed. In this test phylogenies constructed from genetic data matrices that were either extended to describe recurrent substitution at HVRI, were not extended to express this variation, or did or did not include the *NDI* data (included as a variable here due to the nonexhaustive sampling strategy for this gene) were produced and then compared for explanatory power given each data matrix, following the methods outlined by Shimodaira (2002). The input phylogenies for this assessment were generated in MrBayes version 3.0 following all program

**TABLE 1.**—Results of Akaike information criterion selected best-fit models of nucleotide substitution for each gene.  $\alpha$  = gamma distribution shape parameter. HVRI(*Cytb*) refers to the hypervariable region 1 (HVRI) sequence extended to express recurrent substitution identified by cytochrome *b* (*Cytb*) weighting during neighbor-joining tree construction. Similarly, HVRI(*Cytb/NDI*) refers to the HVRI sequence extended to express recurrent substitution identified by *Cytb* and nicotinamide adenine dinucleotide dehydrogenase 1 (*NDI*) weighting during neighbor-joining tree construction.

Gene	Best-fit model	$\alpha$
HVRI	HKY + I + G	0.8905
<i>Cytb</i>	HKY	Equal rates
<i>NDI</i>	HKY + I	Equal rates
HVRI( <i>Cytb</i> )	HKY	Equal rates
HVRI( <i>Cytb/NDI</i> )	HKY	Equal rates

author implementation specifications (Ronquist and Huelsenbeck 2003) and using the best fit model of evolution for each gene determined by the Akaike information criterion in ModelTest 3.7 (Posada and Crandall 1998; Table 1). For the AU test site-wise log-likelihoods for each nucleotide position in each data matrix were calculated independently given each phylogeny. Log files containing site-wise log-likelihood values served as input for the program CONSEL (Shimodaira and Hasegawa 2001) where the AU test was performed and the confidence set ( $\alpha = 0.05$ ) was obtained.

**Phylogeographic methods.**—The complete single-locus nested clade phylogeographical analysis (NCPA) procedure conducted in this study followed the methodologies outlined in several other studies as follows. A haplotype network was constructed in TCS version 1.3 (Clement et al. 2000) following the rules of parsimony using the data matrix previously selected through AU testing. Next, the network was nested into clades following the nesting algorithm described by Templeton et al. (1987), Templeton and Sing (1993), and Crandall (1996). Testing for significant associations ( $\chi^2$ ) of clades with geography was performed in the program GeoDis by conducting 10,000 random permutations of clades (genetic variation) among sampling locations (rookeries—Posada et al. 2000; Templeton and Sing 1993). Geographic distances used were calculated as dispersal distances along the continental shelf, rather than great circle distances, to depict more accurately probable dispersal patterns in *E. jubatus*. Along-shelf dispersal distances (measured as distance between rookeries passing through any intermediate rookeries) are likely most appropriate because dispersal among rookeries by *E. jubatus* is thought to largely be confined to productive continental shelf waters, and great circle distances (point-to-point measurements around a sphere) would, in some instances, imply long dispersal routes through deep oceanic waters. Significant results from the GeoDis analysis were interpreted using the most recent inference key (made available 15 December 2008).

To cross-validate NCPA statistical significances an analysis of variance (ANOVA) was performed for each clade that returned a significant NCPA test statistic. For this analysis



each haplotype/nested clade was treated as a group and the nesting clade as the population to which the groups belonged. Covariance components were calculated from the observed distribution of haplotypes/nested clades among each rookery. Significance was determined by randomly permuting the geographic distribution of groups among each respective population for 1,000 iterations and recalculating the test statistics for each iteration to obtain the null distributions.

Additionally, data on methane concentration recovered from ice cores with dense coverage extending 800,000 years ago were incorporated for comparison with dated significant single-locus NCPA inferences. This data set consisted of 2,103 data points with an average time resolution of approximately 380 years (Loulergue et al. 2008). Because methane is a globally mixed and long-lived greenhouse gas, it is considered a valuable indicator of climatic oscillation (Houghton et al. 2001). In the North Pacific Ocean climatic oscillations clearly have promoted the advance and retreat of glacial bodies that likely have modified biotic distributions (Grosswald and Hughes 2002; Mann and Petet 1994; Westgate et al. 2001). If demographic events inferred by single-locus NCPA within *E. jubatus* are largely the result of glacial vicariance, we would expect global methane values (i.e., climate) at the time of these events to correlate with single-locus NCPA derived inferences in a meaningful way. Because preliminary analysis verified the normality of the methane data (Kolmogorov–Smirnov test;  $D = 0.068$ ,  $P > 0.99$ ), and because sample size was large, significance of this relationship was assessed through a 2-tailed  $Z$ -test by treating methane concentrations at estimated dates of demographic events as random samples from a normally distributed population of values.

Because preliminary analysis of single-locus NCPA results indicated sequestering of the same demographic inference type into distinct temporal clusters, the probability of such a pattern arising by chance was assessed as a binomial probability. Eighteen unique inference outcomes exist in the most recently revised inference key. Therefore, the probability of success (i.e., obtaining any 1 specific inference in a single trial) was  $1/18 = 0.0556$ , and the probability of failure to obtain any 1 specific inference in a single trial was  $17/18 = 0.9444$ . The exact binomial formula is  $P(k \text{ out of } n) = n!/[k!(n - k!)](p^k)[q^{(n-k)}]$ , where  $n$  is the number of trials,  $k$  is the number of successes,  $p$  is the probability of success on a given trial, and  $q$  is the probability of failure on a given trial.

To date historical events inferred by single-locus NCPA for this assessment divergence dating using BEAST version 1.4.8 (Bayesian evolutionary analysis sampling trees—Drummond and Rambaut 2007) was carried out as described below for the Bayesian phylogeny, except with monophyly constraints added to ensure tree topology matched that observed in the haplotype network. Monophyly constraints were expressed in the starting newick tree used to initiate the analysis.

Divergence dating and Bayesian phylogeny estimation within the lineage of *E. jubatus* were performed simultaneously in the program BEAST. The basal position of *Callorhinus* within the family Otariidae, the sister relationship

of the Arctocephaline clade to the *Otaria*, *Zalophus*, *Eumetopias* clade, and the *Zalophus*–*Eumetopias* split are well supported (Arnason et al. 2006; Higdon et al. 2007) and are the 3 node date priors included in this study. Multiple studies have assigned divergence dates within the family Otariidae, with dates estimated from fossil evidence representing a hard lower bound (Marshall 1990) and multiple molecular date estimates producing a range of values. For example, although the oldest available *Eumetopias* specimen (potentially an extinct form) recovered suggests a minimum *Zalophus*–*Eumetopias* divergence of 2 million years ago (mya—Repenning 1976), molecular dates for this split are 4.5, 6, and 8 mya, depending on the estimation algorithm and the loci included (Arnason et al. 2006; Higdon et al. 2007). As a conservative measure—conservative in that older molecular-based divergence estimates imply a greatly reduced rate of sequence evolution in otariids, which is not likely given the observed sequence diversity within *Eumetopias*—the dates estimated by Higdon et al. (2007), based on a 50-gene supertree that provided the most recent molecular dates, were used as date priors in this study (*Callorhinus* divergence, 8.2 mya; Arctocephaline–*Otaria*, *Zalophus*, *Eumetopias* clade split, 5.2 mya; and *Zalophus*–*Eumetopias* split, 4.5 mya).

Initial divergence dating within the *Eumetopias* lineage was performed using the 2 coding regions (*Cytb* and *ND1*), with each partition receiving its own model of DNA evolution as previously determined through model testing. In this analysis all codon positions were included. However, dates estimated from the inclusion of only 1st and 2nd codon positions gave very similar node dates, indicating that homoplasy at coding regions within the family Otariidae was not heavily influencing divergence estimation (data not shown). All program operations for this analysis strictly followed the program author guidelines. Dates estimated for the time to most recent common ancestor and the next most basal set of divergences within the *Eumetopias* lineage were recorded and retained as node date priors in a 2nd BEAST analysis to estimate dates of the more terminal nodes using only HVRI data. The objective of dating basal nodes with coding region data and terminal nodes with HVRI data was to partition substitutions from the 3 genes into areas of the tree where they retain the most phylogenetic information. From the final tree file the maximum clade credibility tree was obtained using TreeAnnotator (part of the BEAST package). In addition, because previous studies have demonstrated that the *Eumetopias* phylogeny contains substantial information about population history, a Bayesian skyline plot allowing for 5 discrete changes in population size was constructed using standard Markov chain Monte Carlo sampling procedures to estimate posterior distributions of theta ( $\theta = N_{ef}\tau$ , where  $N_{ef}$  is female effective population size and  $\tau$  is generation length) through time using a flexible demographic model and directly from the sample of gene sequences (Drummond et al. 2005). Five demographic changes were allowed to identify historic demographic changes while at the same time not over-parameterizing the analysis. A generation time for *E. jubatus*

**TABLE 2.**—Approximately Unbiased (AU) test (Shimodaira 2002) of topological congruence based on site-wise log-likelihoods of 4 molecular data matrices for reciprocal gene trees. The tree receiving 1st-position ranking for each comparison is demarcated by bold and italicized numbering. See text for definition of acronyms.

Tree	Data matrix			
	HVRI/ <i>Cytb</i>	HVRI(x)/ <i>Cytb</i>	HVRI/ <i>Cytb</i> / <i>ND1</i>	HVR1(x)/ <i>Cytb</i> / <i>ND1</i>
HVRI/ <i>Cytb</i>	0.003	4.00E-58	5.00E-05	3.00E-07
HVRI(x)/ <i>Cytb</i>	0.212	<b><i>1</i></b>	0.001	1.00E-63
HVRI/ <i>Cytb</i> / <i>ND1</i>	1.00E-04	5.00E-04	0.001	2.00E-30
HVR1(x)/ <i>Cytb</i> / <i>ND1</i>	<b><i>0.872</i></b>	3.00E-06	<b><i>1</i></b>	<b><i>1</i></b>

of 10 years was assumed for this estimation (Calkins and Pitcher 1982; York 1994).

## RESULTS

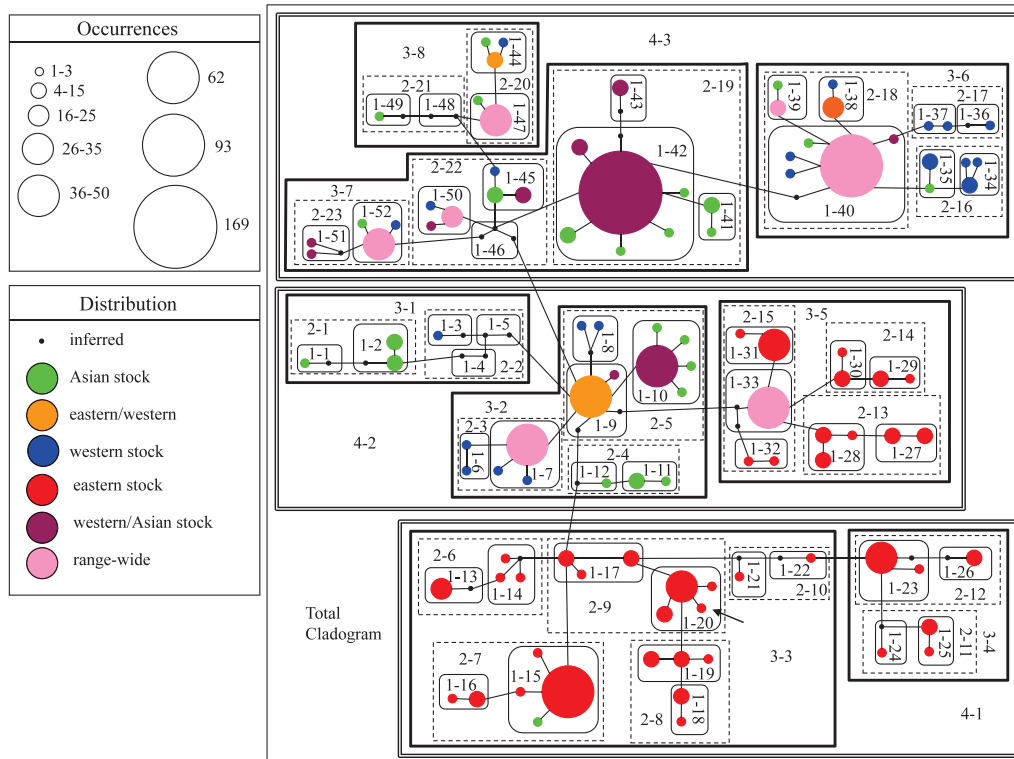
*Gene variability, recurrent substitution, and data matrix selection.*—Approximately 1.6 million sequenced base pairs (bp) were included in this study. We identified 18 *Cytb* and 82 HVRI haplotypes from 1,021 individual *E. jubatus* (Appendix I). The *Cytb* network (not shown) contained no reticulations and consisted of 2 halves that largely describe the 2 previously identified subspecies. The halves of the cladogram are separated by an inferred haplotype and 2 amino acid changes. Conversely, the network produced from the 82 observed HVRI haplotypes (not shown) contained numerous reticulations. We sequenced 202 individuals, including at least 1 representative of all HVRI/*Cytb* composite haplotypes, for the 957 nucleotides of *ND1*, revealing 11 haplotypes (see Appendix II for accession numbers). A parsimony network constructed from these haplotypes included 1 inferred haplotype and no reticulations (not shown). In summary, relationships among haplotypes within the *Cytb* and *ND1* data sets were resolved although they exhibited only broadscale geographic resolution provided by the moderate number of observed variable sites (19 in *Cytb* and 12 in *ND1*). Conversely, the HVRI data set contained 41 variable sites within 238 bp; however, the frequency of reticulations throughout the network prevented an accurate depiction of the evolutionary relationships among haplotypes. The frequencies of all composite 3-gene mitochondrial haplotypes are described in detail in Appendix II.

Character changes mapped onto a neighbor-joining tree constructed from preferential weighting of *Cytb* and *ND1* recovered 86 substitutions at 19 sites within HVRI, a 30% increase in the number of recurrent substitutions that otherwise would be detected by character mapping using only the HVRI data. Furthermore, results of the AU test based on site-wise log-likelihood scores selected the phylogeny constructed from *Cytb*, *ND1*, and HVRI extended to express all of these 86 substitutions as the optimal for describing 3 of 4 data matrices (Table 2). Notable is the observation that the phylogeny produced from the most simplistic data set (that including *Cytb* and HVRI) was best explained by the most complex data set (that including *Cytb*, *ND1*, and HVRI extended to express identified recurrent substitutions, termed HVRI(x)/*Cytb*/*ND1* in Table 2). As a result, this data matrix was used for downstream phylogeographic analyses.

*Phylogeographic and phylogenetic patterns.*—The haplotype network constructed from the final data matrix generally maintains a network structure consisting of basal haplotypes that are frequent and widely distributed and terminal haplotypes that are sequestered geographically and occur in lower frequency relative to interior haplotypes (Fig. 2). From this network the divergence between subspecies is clearly demarcated, although *E. j. monteriensis* is distributed across 2 parts of the network that are separated from each other by 2 widely distributed and 3 inferred haplotypes. An additional characteristic of this network is that, except for 1 instance, range-wide haplotypes (those observed in all 3 stocks) are sequestered to regions of the network otherwise consisting exclusively of haplotypes of *E. j. jubatus*. Of these range-wide haplotypes, their occurrence in *E. j. monteriensis* (eastern stock) is rare (6 of 7 of these haplotypes occur fewer than 4 times in *E. j. monteriensis*) and is restricted to southeastern Alaska (the westernmost region of *E. j. monteriensis*).

Eighteen demographic events were detected by single-locus NCPA, consisting of 5 contiguous range expansions, 5 instances of restricted gene flow with isolation by distance, 5 inferences of restricted gene flow or dispersal but with some long-distance dispersal, 2 past fragmentation or long-distance colonization events (or both), and 1 inconclusive outcome (Table 3). The inference of restricted gene flow with isolation by distance obtained at the total-cladogram level describes the overall demographic phenomenon of population structure of *E. jubatus*. The inference of past fragmentation or long-distance colonization (or both) for clade 4-2 captures, in part, the ancient divergence between *E. j. jubatus* and *E. j. monteriensis*. The relationship between subspecies within clade 4-2 and at the total cladogram level corresponds to the general pattern observed in the Bayesian phylogeny describing the subspecies divergence (Fig. 3). Tests performed for clades 4-1 and 4-3 both returned an inference of restricted gene flow or dispersal but with some long-distance colonization. These 2 clades are the largest subspecies-specific groupings in the analysis, and their associated inferences correspond with previously identified dispersal trends in *E. jubatus* described by dispersal generally occurring among adjacent rookeries with potential for longer distance migration due to their high vagility. The remaining inferences were recovered throughout portions of the network that describe further variation within subspecies.

As would be expected under the assumption of a low error rate of NCPA, of the 18 clades indicated as having statistically significant geographic associations through NCPA, 10 also



**FIG. 2.**—Nested design of the statistical parsimony network constructed from the HVRI(x)/*Cytb*/NDI data matrix. Circles represent observed haplotype linkages, and the distributions and frequencies are indicated by coloring and size, respectively. Lines connecting haplotypes represent substitutions defining their relationships. Small black circles indicate inferred haplotypes. Reference Table 3 for information about dating and single-locus nested clad phylogeographical analysis (NCPA) results. See text for definitions of gene acronyms.

yielded significant ANOVA test statistics (Table 4). Of these 10 clades, all but 1 received inferences involving some type of long-range movement or dispersal of haplotypes (contiguous range expansion, past fragmentation or long-distance colonization [or both], or restricted gene flow with some long-distance dispersal; events promoting significant among-group variation). Conversely, of the 8 clades returning nonsignificant ANOVA test statistics, all but 2 of these (inconclusive outcome and contiguous range expansion) involved restricted gene flow often with isolation by distance (events that would hinder accumulation of intergroup variation).

The mean methane concentration at dates estimated for the time to most recent common ancestor of all significant single-locus NCPA inferences was 468.44 parts per billion by volume (ppbv). Although this value is irrespective of the 95% highest probability density intervals (HPDs) surrounding the mean divergence dates, this value was significantly different from a mean methane concentration over the last 800,000 years of 519.97 ppbv ( $Z = 2.41$ ,  $P = 0.015$ ). By contrast the mean methane concentration at estimated times for all other clades was not significant ( $\bar{X} = 499.16$ ;  $Z = 1.64$ ,  $P = 0.10$ ). Furthermore, dates for significant demographic inferences show a pattern of temporal clustering that generally correlates with periods of low methane concentrations and time periods previously characterized as periods of glacial maxima. The inference returned at the total-cladogram level dates to within the 5th glacial maximum and all other inferences form 2 distinct

groupings most closely associated with the 2nd and 3rd glacial maxima (Rohling et al. 1998; Fig. 4). The HPDs for the date estimates are generally large and span the time frame of methane-inferred climatic oscillations. However, 1  $SD$  from the mean dates generally resides within major climatic periods in which the mean is positioned. This important nuance justifies the overall confidence in the datings.

Comparing the patterns of demographic events with climatological cycling relative to estimated historic population sizes provided information on how the relationship between climate (glaciation) and population size potentially interacted to influence demography (Figs. 4 and 5). Notable is the observation that all inferences (6) clustering around the time of the 3rd glaciation describe processes involving restriction of gene flow. These 6 inferences refer to deeper clade nestings (3- and 4-step clades) and date to periods of low ancestral population sizes. The most common inference within this cluster was restricted gene flow or dispersal but with some long-distance dispersal, occurring 4 times. The binomial probability that 4 of 6 inferences within this time period would be the same by chance is 0.00013. In contrast, inferences clustering around the 2nd glaciation or earlier all refer to shallower nestings (1- and 2-step clades) corresponding to a time of population size increase in *E. jubatus*. In this cluster several inferences describe some sort of restricted gene flow; however, the most common type of inference within this cluster was contiguous range expansion, occurring 5 times.

**TABLE 3.**—Summary of significant results for the nested clade phylogeographical analysis (NCPA). Values within the  $D_c$  and  $D_n$  columns are distance (km), with an indication of whether each value was significantly large ( $>$ ) or small ( $<$ ), and its associated  $P$ -value. n.s. = not significant at  $P = 0.05$ . I – T = interior minus tips distance. Inferences were drawn from the key made available 15 December 2008. CRE = contiguous range expansion; IC = inconclusive outcome; RGF w/ IBD = restricted gene flow with isolation by distance; RGF/LDD = restricted gene flow or dispersal but with some long-distance dispersal; PF/LDC = past fragmentation or long-distance colonization (or both). Estimated dates are expressed as millions of years ago (mya).

Clade	$\chi^2$ $P$ -value	Nested clades	$D_c$	$D_n$	Chain of inference	Demographic event	Estimated date (95% HPD)
1-20	0.079	DDDDDD3	n.s.	1,158.44, $>$ , 0.009	N, N, Y, N	CRE	0.074 (0.033–0.106)
		AAAAAAA	n.s.	n.s.			
		NNNNNN3	n.s.	n.s.			
		N3 (interior)	557.97, $<$ , 0.027	n.s.			
		I – T	n.s.	–245.79, $<$ , 0.018			
1-28	0.512	YYYY10	n.s.	n.s.	N, Y, N, N	RGF w/ IBD	0.063 (0.029–0.108)
		FF10	n.s.	n.s.			
		BB10 (interior)	n.s.	n.s.			
		I – T	798.94, $>$ , 0.028	n.s.			
1-40	0.017	OOO1	n.s.	n.s.	N, N, N, N	IC	0.096 (0.035–0.106)
		S22	n.s.	n.s.			
		QQQ1	n.s.	4,636.34, $>$ , 0.012			
		U1	n.s.	n.s.			
		S1 (interior)	n.s.	n.s.			
1-42	0.962	LLL1	n.s.	n.s.	N, Y, Y, N, N, N	RGF/LDD	0.084 (0.037–0.110)
		YYYYY1	573.06, $<$ , 0.035	n.s.			
		KKK1	n.s.	n.s.			
		BBBB1	n.s.	1,694.58, $<$ , 0.043			
		BB9	n.s.	1,788.31, $<$ , 0.023			
		BB1 (interior)	2,683.14, $>$ , 0.002	2,627.71, $>$ , 0.001			
		I – T	1,788.89, $>$ , 0.002	682.03, $>$ , 0.001			
1-44	0.062	WWWWW1	n.s.	6,229.20, $>$ , 0.015	Y, Y, Y, N, Y, N	CRE	0.066 (0.023–0.083)
		HHH1	n.s.	n.s.			
		DD1 (interior)	1,590.89, $<$ , 0.008	2,529.35, $<$ , 0.031			
		I – T	–2,370.46, $<$ , 0.013	n.s.			
1-45	0.412	FF1	n.s.	3,456.28, $>$ , 0.025	N, N, Y, N	CRE	0.066 (0.008–0.089)
		AAAA1 (interior)	730.57, $<$ , 0.009	2,360.56, $<$ , 0.035			
		I – T	–3,012.12, $<$ , 0.007	–1,095.72, $<$ , 0.038			
2-1	0.003	1-1	n.s.	1,472.79, $>$ , 0.003	Y, Y, Y, N, Y, N	CRE	0.064 (0.028–0.104)
		1-2 (interior)	701.70, $<$ , 0.003	785.10, $<$ , 0.003			
		I – T	n.s.	–687.70, $<$ , 0.003			
2-5	0.001	1-8	n.s.	3,149.34, $<$ , 0.048	N, N, Y, N, N	PF/LDC	0.084 (0.050–0.149)
		1-10	1,578.65, $<$ , 0.001	n.s.			
		1-9 (interior)	1,308.70, $<$ , 0.001	3,820.98, $>$ , 0.002			
		I – T	n.s.	214.14, $>$ , 0.019			
2-6	0.020	1-13	84.84, $<$ , 0.008	320.77, $<$ , 0.015	N, Y, N, N	RGF w/ IBD	0.066 (0.038–0.133)
		1-14 (interior)	1,067.03, $>$ , 0.017	818.87, $>$ , 0.010			
		I – T	982.18, $>$ , 0.010	498.10, $>$ , 0.010			
2-15	0.541	1-31	499.05, $<$ , 0.033	693.49, $<$ , 0.032	N, Y, N, N	RGF w/ IBD	0.103 (0.048–0.151)
		1-32	n.s.	n.s.			
		1-33 (interior)	1,355.43, $>$ , 0.022	1,097.88, $>$ , 0.023			
		I – T	844.91, $>$ , 0.026	409.38, $>$ , 0.024			
2-18	0.014	1-38	n.s.	n.s.	N, N, Y, N	CRE	0.100 (0.051–0.135)
		1-39	3,972.66, $>$ , 0.003	3,889.54, $>$ , 0.001			
		1-40 (interior)	2,346.93, $<$ , 0.001	2,507.12, $<$ , 0.001			
		I – T	–956.26, $<$ , 0.001	–595.78, $<$ , 0.001			
3-2	0.001	2-3	2,555.97, $<$ , 0.001	3,181.22, $<$ , 0.001	N, Y, Y, N, N, N, Y	RGF w/ IBD	0.135 (0.084–0.215)
		2-4	772.33, $<$ , 0.001	3,955.10, $>$ , 0.011			
		2-5 (interior)	3,710.60, $>$ , 0.002	3,602.98, $>$ , 0.001			
		I – T	1,394.74, $>$ , 0.001	317.59, $>$ , 0.001			
3-6	0.283	2-16	n.s.	n.s.	N, Y, N, N	RGF w/ IBD	0.137 (0.082–0.169)
		2-17	n.s.	n.s.			
		2-18 (interior)	2,681.91, $>$ , 0.019	2,621.61, $>$ , 0.019			
		I – T	698.13, $>$ , 0.044	369.85, $>$ , 0.027			



TABLE 3.—Continued.

Clade	$\chi^2$ P-value	Nested clades	$D_c$	$D_n$	Chain of inference	Demographic event	Estimated date (95% HPD)
3-7	0.001	2-19	2,597.13, <, 0.001	2,904.30, <, 0.001	N, Y, Y, N, N, Y	RGF/LDD	0.156 (0.092–0.186)
		2-23	2,362.18, <, 0.001	3,468.32, >, 0.001			
		2-22 (interior)	n.s.	3,254.88, >, 0.012			
		I – T	850.38, >, 0.001	238.66, >, 0.015			
4-1	0.001	3-4	377.60, <, 0.029	429.21, <, 0.044	N, Y, N, N, N, N, Y	RGF/LDD	0.200 (0.142–0.240)
		3-3 (interior)	622.81, >, 0.021	611.52, >, 0.011			
		I – T	285.21, >, 0.027	182.31, >, 0.033			
4-2	0.001	3-1	903.79, <, 0.001	5,834.77, >, 0.001	N, Y, Y, Y, N	PF/LDC	0.199 (0.140–0.253)
		3-5	922.29, <, 0.001	3,819.98, <, 0.001			
		3-2 (interior)	3,710.62, <, 0.001	4,298.91, >, 0.030			
		I – T	2,791.52, >, 0.001	n.s.			
4-3	0.001	3-6	2,579.44, <, 0.001	n.s.	N, Y, Y, N, N, N, Y	RGF/LDD	0.188 (0.097–0.539)
		3-8	2,845.69, <, 0.021	n.s.			
		3-7 (interior)	3,079.2, <, 0.006	3,225.80, >, 0.007			
		I – T	435.84, >, 0.001	135.70, >, 0.013			
T-C	0.001	4-1	611.30, <, 0.001	3,804.63, <, 0.038	N, Y, N, N	RGF w/ IBD	0.360 (0.145–0.876)
		4-3	3,196.13, <, 0.001	n.s.			
		4-2 (interior)	4,259.26, >, 0.001	4,051.00, >, 0.001			
		I – T	1,878.27, >, 0.001	162.55, >, 0.003			

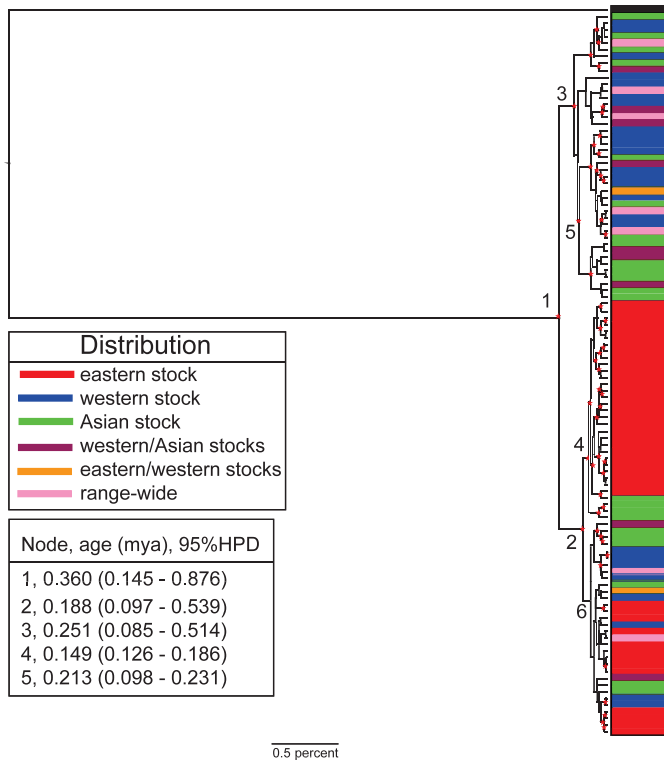


FIG. 3.—Maximum clade credibility Bayesian phylogeny. Haplotypes are color coded by their observed distributions, and the black outgroup haplotype is *Zalophus californianus* according to Wilson and Reeder (2005). Nodes receiving a posterior probability support value of 0.5 or higher are indicated by small red stars. Significant nodes containing clades, where the sequestering of haplotypes into distinct geographic regions is observed, are numbered, and the estimated divergence date and 95% highest probability density intervals (HPDs) for these nodes are listed. Although posterior support for node 6 was below 0.5, this node is numbered for reference in the text.

The probability of such a chance occurrence is 0.00017. No significant demographic inferences were recovered in more recent times, around the last glacial maximum, a period in which population sizes were estimated to be highest.

The time to most recent common ancestor for *E. jubatus* (Fig. 3, node 1), based on coding region data and outgroup node priors from Higdon et al. (2007), was estimated at 0.360 mya (95% HPD = 0.145–0.876). The initial divergence from node 1 resulted in the sequestering of all exclusively *E. j. monteriensis* haplotypes into a single, yet polyphyletic, grouping (node 2). Terminal to node 2 were all 40 haplotypes exclusive to *E. j. monteriensis* and 22 exclusive to *E. j. jubatus*, with 8 and 12 of these exclusive to the western and Asian stocks, respectively. Within this grouping 2 major clades were identified, 1 of which (node 4) was comprised exclusively of haplotypes of *E. j. monteriensis*, except for 4 haplotypes observed only in the Asian stock. Node 6, being sister to node 3 (Fig. 3), retained the remaining haplotypes observed exclusively in *E. j. monteriensis* in addition to haplotypes occurring across the species' distribution; however, the posterior probability of this node was <0.5. The basal clades terminal to nodes 4 and 6 consisted of haplotypes of *E. j. jubatus*.

On the other half of the phylogeny terminal to node 3 all but 5 range-wide haplotypes and 1 haplotype observed in the western and eastern stocks—3 of 48 occurrences of this haplotype were in the eastern stock—are haplotypes exclusive to *E. j. jubatus*. Although within this clade 11 haplotypes were observed throughout *E. j. jubatus*, 17 and 13 haplotypes were restricted to the western and Asian stocks, respectively. The divergence observed at clade 5 leads to 2 lineages, 1 of which contains haplotypes found either exclusively in the Asian stock or shared between the Asian and western stock, but none exclusive to the western stock.

Although posterior support for some nodes in this phylogeny was <0.5, the major phylogenetic pattern depicted supports

**TABLE 4.**—Results of ANOVAs for each clade receiving significant test statistics through the nested clade phylogeographical analysis (NCPA) statistical testing procedure. Descriptions of NCPA inference abbreviations are found in Table 3. *P*-values are for global  $F_{ST}$  calculated from the analysis, and significant statistics are bold and italicized. Significance was determined by 1,000 permutations of rookery occurrences of haplotypes among clades.

Clade	% variance among groups	% variance within groups	<i>P</i> -value <sub>d.f.</sub>	NCPA inference
1-20	20.83	79.17	<b><i>0.050</i></b> <sub>39</sub>	CRE
1-28	10.43	89.57	0.223 <sub>11</sub>	RGF w/ IBD
1-40	0.00	100.00	0.500 <sub>101</sub>	IC
1-42	1.34	98.66	0.255 <sub>183</sub>	RGF/LDD
1-44	27.87	72.13	<b><i>0.011</i></b> <sub>11</sub>	CRE
1-45	7.87	92.13	0.157 <sub>14</sub>	CRE
2-1	51.26	48.74	<b><i>0.015</i></b> <sub>11</sub>	CRE
2-5	9.52	90.48	<b><i>0.001</i></b> <sub>103</sub>	PF/LDC
2-6	10.64	89.36	0.110 <sub>24</sub>	RGF w/ IBD
2-15	0.36	99.64	0.392 <sub>79</sub>	RGF w/ IBD
2-18	8.30	91.70	<b><i>0.005</i></b> <sub>31</sub>	CRE
3-2	5.89	94.11	<b><i>0.001</i></b> <sub>151</sub>	RGF/LDD
3-6	0.88	99.12	0.161 <sub>157</sub>	RGF w/ IBD
3-7	2.13	97.87	<b><i>0.001</i></b> <sub>291</sub>	RGF/LDD
4-1	0.80	99.20	0.169 <sub>227</sub>	RGF/LDD
4-2	16.17	83.83	<b><i>0.001</i></b> <sub>302</sub>	PF/LDC
4-3	2.00	98.00	<b><i>0.001</i></b> <sub>494</sub>	RGF/LDD
T-C	10.19	89.81	<b><i>0.001</i></b> <sub>1,025</sub>	RGF w/ IBD

previously hypothesized relationships among the 3 stocks and the 2 subspecies. However, the current results both describe the early divergence in the species history between the 2 extant and currently recognized subspecies and also indicate a complex history leading to the current distribution of haplotypes. Moving from the base to the tips of the phylogeny of *E. jubatus*, clear patterns of lineage sorting at different stages of completion are observable. Although terminal to the initial divergence all haplotypes of *E. j. monteriensis* (eastern stock) are sequestered to node 2 (Fig. 3), it is not until about 200,000 years later at node 4 that a large group of haplotypes of *E. j. monteriensis* approach monophyly—1 Asian stock haplotype is within the eastern stock clade that is itself terminal to an exclusively Asian stock clade. The relationships among haplotypes terminal to node 6 present a pattern of less complete lineage sorting, with some tip clades exclusively *E. j. monteriensis*, with others still retaining many haplotypes of *E. j. jubatus*. Although node 6 was unsupported, a comparison of the completion of sorting between nodes 4 and 6 illustrates the stochastic nature of the lineage sorting process; although nodes 6 and 4 likely have similar coalescence times, sorting is closer to completion terminal to node 4.

## DISCUSSION

In this study single-locus NCPA was used to draw inferences on population history. Multiple independent statistical approaches were used to validate the inferences returned by single-locus NCPA. ANOVA returned patterns of group (clade) significance that correspond to what would be expected given the types of demographic events returned for each clade; demographic events that promote significant among-group

variance allocation (those events that distribute genetic diversity among rookeries) were usually significant, and those demographic events that promote within-group variance retention were found most often to be nonsignificant. Furthermore, results from the single-locus NCPA, in combination with reconstructions of historical  $N_{ef}$  and ice-core inferred climatological cycling, suggest that the patterns of demographic events are related to the climate and population size at the time. The chance probability of such a pattern was assessed in this study by using *Z*-tests and binomial probabilities and found to be low. These combined statistical observations describe a pattern of phylogeography of *E. jubatus* that includes an interaction between population size, climate, and their dependence on linearly distributed rookeries.

Our results support the hypothesis that climate change has a major role in shaping the observed distribution of genetic diversity in *E. jubatus*. One of the major inferences pertaining to this hypothesis is that glacial vicariance has largely shaped the evolutionary history of *E. jubatus*. The observation that historic events related to restricted gene flow generally occurred during a time of low  $N_{ef}$  suggests that vicariance, in conjunction with genetic drift acting on low ancestral numbers of haplotypes, promoted geographic sequestering throughout portions of the distribution. In addition, inferences of occasional long-distance dispersal during this time potentially describe the species' ability to establish new territory via dispersal during a time of low  $N_{ef}$  and reduced competition for breeding territory. Conversely, all inferences of contiguous range expansion correlate with a population expansion as described by the Bayesian skyline plot (Fig. 5). This indicates that as  $N_{ef}$  increased the response to glacial vicariance changed. During this time the population of *E. jubatus* as a whole was expanding both in numbers and in range. Individuals would have been forced to disperse greater distances to find breeding territory as  $N_{ef}$  increased and glacial cover reduced the number of ice-free rookeries. Finally, the lack of significant demographic inferences recovered around the time of the last glacial maximum is likely the result of large, sustained  $N_{ef}$ , previous saturation of all suitable habitats, and perhaps a lack of phylogeographic resolution at this timescale.

In general, these results can be interpreted as descriptive of how abiotic factors can influence the evolutionary fate of a species. Specifically for *E. jubatus*, one of the results of this study is that relatively warm periods have promoted population expansion and dispersal by increasing available rookery habitat. Perhaps the most important aspect of the current results is the implication that future climate change has the potential to affect distributions and demography of contemporary populations of species in ways similar to that documented in this study. It is clear that climate change causes stress, including the necessity of finding new breeding sites, adapting to new food sources, and so on. It can be inferred from the present study that population size influences the capacity for dealing with such stressors, because the genetic signatures resulting from similar climatic patterns are distinctly different for large and small populations.

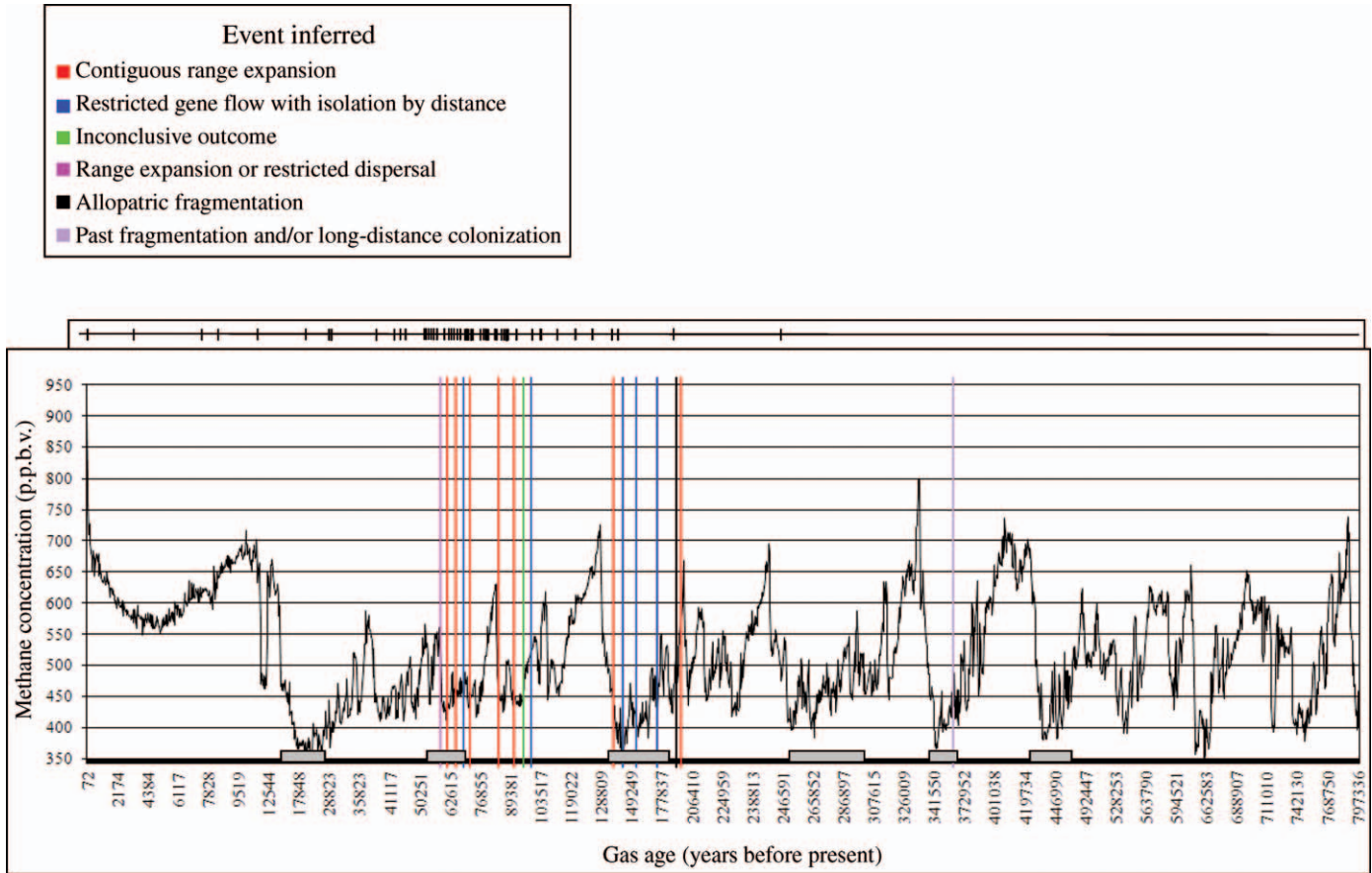


FIG. 4.—Histogram of methane concentration (in parts per billion by volume) over the last 500,000 years. The nonlinearity of the x axis is a result of heterogeneity of methane sampling over time (Loulergue et al. 2008) and should be considered when interpreting this figure. Dates of time to most recent common ancestor for significant single-locus nested clade phylogeographical analysis (NCPA) clades are plotted onto this histogram, and the type of inference obtained for each clade is color coded. Small black hash marks above the histogram define point estimates for nonsignificant clades. Gray rectangles along the bottom of the histogram indicate time spans of 5 previous glacial periods, as defined by Rohling et al. (1998).

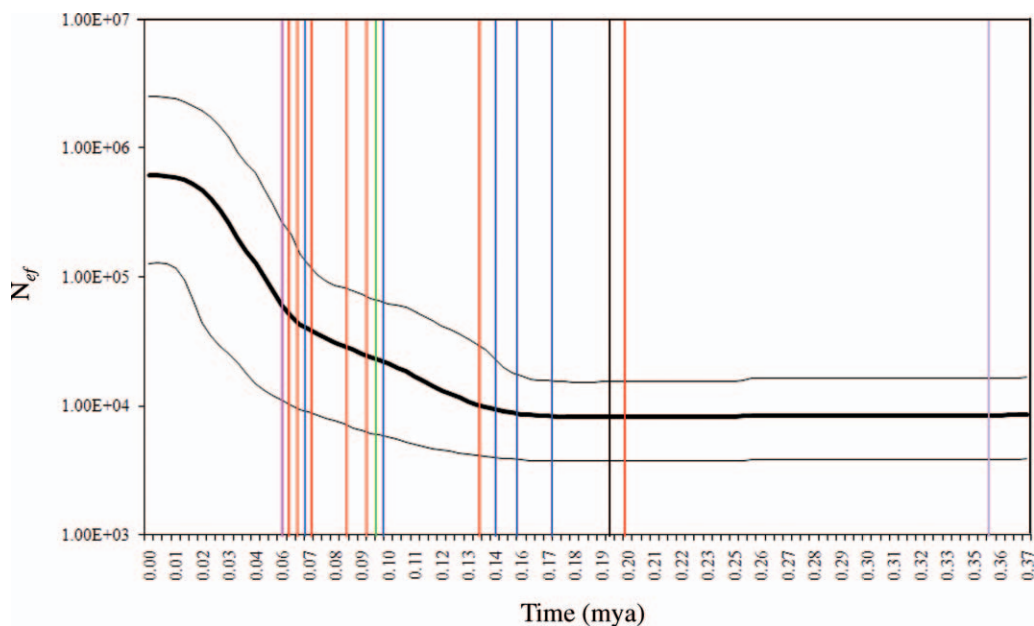


FIG. 5.—Bayesian skyline plot with mean population size and 95% highest probability density intervals (HPDs) plotted against time. As in Fig. 4, significant NCPA inferences are plotted and color coded.



Although the Bayesian phylogeny presented in Fig. 3 describes relationships among haplotypes similar to those presented in the haplotype network, this perspective provided additional insight into both historical and contemporary processes. This tree describes the ancient divergence between subspecies, with node 1 representing the base of the lineage of *E. jubatus* describing the initial documentable divergence 0.360 mya. Following from this estimation, during the 5th glacial period when population sizes were low, the distribution of *E. jubatus* was split by glacial vicariance into at least 2 disjunct populations initiating subspecific differentiation. The observation that 3 Asian stock haplotypes form the base of the large *E. j. monteriensis* clade terminal to node 4 describes an ancient “out of Asia” relationship between the extreme ends of the distribution of *E. jubatus* and indicates that Asian portions of the species’ range served as the source population for the eastward expansion. Although node 6 is unsupported, the relationship observed between sister clades here is similar to that observed at node 4, with an *E. j. jubatus* clade forming the base of a clade consisting largely of *E. j. monteriensis*. That no haplotypes were observed in the Asian stock and *E. j. monteriensis*, but not the western stock, indicates the lack of contemporary dispersal between the Asian stock and *E. j. monteriensis*. However, the observation that 6 of 7 range-wide haplotypes belong to *E. j. jubatus* clades does indicate recent directional dispersal from west to east. The oldest *Eumetopias* fossil was recovered from the Onma formation in Japan dated to the Pliocene about 2 mya (thought to represent an extinct member of the genus *Eumetopias*—Kaseno 1951; Mitchell 1968; Repenning 1976). This information, paired with the findings from the current study, indicates a potential geographic center of origin for *Eumetopias*.

In this study a novel method was used to account for generally cryptic recurrent substitutions. This improved resolution by decreasing the phylogenetic obscurity produced by homoplasy while improving confidence in branching order. Potentially, this approach is applicable to any phylogenetic analysis in which coding genes, or otherwise conservative loci, are used in combination with a more rapidly evolving locus in which recurrent substitutions produce homoplasy. In the event of evidence for coding region homoplasy, these regions should not be weighted to resolve hypervariable region recurrent substitutions. To determine the appropriateness of using this method several aspects of the data set should be considered. First, the estimated time to most recent common ancestor is an important parameter, because the greater the age of the lineage, the more time for homoplasy to accumulate in all regions. By using this information in combination with knowledge about the mutation rate of coding regions, network construction and evaluation (whether coding region–based networks contain reticulations), and consistency and homoplasy index calculations, a logical decision can be made regarding the use of this approach.

In summary, by the implementation of multiple statistical approaches to maximize genetic signal and draw evolutionary inferences, a strong, multifaceted perspective of evolutionary history of *E. jubatus* has been developed. This history reflects a major influence of climate change and glacial vicariance,

with demographic response contingent upon population size at the time. In addition, phylogenetic patterns indicate the direction of dispersal over evolutionary timescales and, paired with limited fossil data, present a hypothesis for the geographic center of origin of *E. jubatus* located in Asia. The results of this study can serve as a working hypothesis for future studies to develop a better understanding of the evolution of *E. jubatus*.

## ACKNOWLEDGMENTS

We thank the many people who helped in obtaining tissue samples—especially V. Burkanov (coordinator for the collecting trips in Russia), T. Loughlin, and D. Calkins—and also the National Oceanic and Atmospheric Administration cruises in the Aleutians and the Gulf of Alaska and the Alaska Department of Fish and Game. K. M. Nichols, O. E. Rhodes, and J. A. DeWoody provided valuable insights and suggestions during the course of the doctoral studies of CDP. All sea lion tissue samples were collected under authorization of United States Marine Mammal Permits 358–1888 (Alaska Department of Fish and Game) and 782–1532 (National Marine Mammal Lab). Comments from 2 anonymous reviewers were very constructive and greatly improved this manuscript. This study was conducted as part of the doctoral dissertation of CDP at Purdue University. Funding was provided by the National Marine Fisheries Service, the Lily Endowment, and internal funds provided by the Department of Forestry and Natural Resources, Purdue University.

## LITERATURE CITED

- ARNASON, U., ET AL. 2006. Pinniped phylogeny and a new hypothesis for their origin and dispersal. *Molecular Phylogenetics and Evolution* 41:345–354.
- BAKER, A. R., ET AL. 2005. Variation of mitochondrial control region sequences of Steller sea lions, *Eumetopias jubatus*: the three-stock hypothesis. *Journal of Mammalogy* 86:1075–1084.
- BANDELT, H. J., L. QUINTANA-MURCI, A. SALAS, AND V. MACAULAY. 2002. The fingerprint of phantom mutations in mitochondrial DNA data. *American Journal of Human Genetics* 71:1150–1160.
- BICKHAM, J. W., T. R. LOUGHLIN, J. K. WICKLIFFE, AND V. N. BURKANOV. 1998. Geographic variation in the mitochondrial DNA of Steller sea lions: haplotype diversity and endemism in the Kuril Islands. *Biosphere Conservation* 1:107–117.
- BICKHAM, J. W., J. C. PATTON, AND T. R. LOUGHLIN. 1996. High variability for control-region sequences in a marine mammal: implications for conservation and biogeography of Steller sea lions (*Eumetopias jubatus*). *Journal of Mammalogy* 77:95–108.
- CALKINS, D. G., AND K. W. PITCHER. 1982. Population assessment, ecology and trophic relationships of Steller sea lions in the Gulf of Alaska. Pp. 445–546 in *Environmental assessment of the Alaskan continental shelf: final reports of principal investigators*. United States Department of Commerce, National Oceanic and Atmospheric Administration, Juneau, Alaska 19:1–565.
- CLEMENT, M. D., D. POSADA, AND K. A. CRANDALL. 2000. TCS: a computer program to estimate gene genealogies. *Molecular Phylogenetics and Evolution* 3:102–113.
- CRANDALL, K. A. 1996. Multiple interspecies transmissions of human and simian T-cell leukemia/lymphoma virus type I sequences. *Molecular Biology and Evolution* 13:115–131.



- DRUMMOND, A. J., AND A. RAMBAUT. 2007. BEAST: Bayesian evolutionary analysis by sampling trees. *BMC Evolutionary Biology* 7:214.
- DRUMMOND, A. J., A. RAMBAUT, B. SHAPIRO, AND O. G. PYBUS. 2005. Bayesian coalescent inference of past population dynamics from molecular sequences. *Molecular Biology and Evolution* 22:1185–1192.
- GANNON, W. L., R. S. SIKES, AND THE ANIMAL CARE AND USE COMMITTEE OF THE AMERICAN SOCIETY OF MAMMALOGISTS. 2007. Guidelines of the American Society of Mammalogists for the use of wild mammals in research. *Journal of Mammalogy* 88:809–823.
- GROSSWALD, M. G., AND T. J. HUGHES. 2002. The Russian component of an arctic ice sheet during the last glacial maximum. *Quaternary Science Reviews* 21:121–146.
- HARLIN-COGNATO, A., J. W. BICKHAM, T. R. LOUGHLIN, AND R. L. HONEYCUTT. 2006. Glacial refugia and the phylogeography of Steller's sea lion (*Eumatopias jubatus*) in the North Pacific. *Journal of Evolutionary Biology* 19:955–969.
- HIGDON, J. W., O. R. P. BININDA-EMONDS, R. M. D. BECK, AND S. H. FERGUSON. 2007. Phylogeny and divergence of the pinnipeds (Carnivora: Mammalia) assessed using a multigene dataset. *BMC Evolutionary Biology* 7:216.
- HOFFMAN, J. I., K. K. DASMAHAPATRA, W. AMOS, C. D. PHILLIPS, T. S. GELATT, AND J. W. BICKHAM. 2009. Contrasting patterns of genetic diversity at three different genetic markers in a marine mammal metapopulation. *Molecular Ecology* 18:2961–2978.
- HOFFMAN, J. I., C. W. MATSON, W. AMOS, T. R. LOUGHLIN, AND J. W. BICKHAM. 2006. Deep genetic subdivision within a continuously distributed and highly vagile marine mammal, the Steller's sea lion (*Eumatopias jubatus*). *Molecular Ecology* 15:2821–2832.
- HOUGHTON, J. T., ET AL. 2001. Climate change 2001: the scientific basis. Contributions of working group I to the third assessment report of the intergovernmental panel on climate change. Cambridge University Press, Cambridge, United Kingdom.
- KASENO, Y. 1951. Pliocene pinniped remains from Kanazawa, Ishikawa Prefecture, Japan. *Translations of the Proceedings of the Palaeontological Society of Japan* 2:57–64.
- KENYON, K. W., AND D. W. RICE. 1961. Abundance and distribution of the Steller sea lion. *Journal of Mammalogy* 42:223–234.
- LOUGHLIN, T. R., M. A. PEREZ, AND R. L. MERRICK. 1987. *Eumatopias jubatus*. *Mammalian Species* 283:1–7.
- LOUGHLIN, T. R., A. S. PERLOV, AND V. A. VLADIMIROV. 1992. Range-wide survey and estimation of total number of Steller sea lions in 1989. *Marine Mammal Science* 8:220–239.
- LOULERGUE, L., ET AL. 2008. Orbital and millennial-scale features of atmospheric CH<sub>4</sub> over the past 800,000 years. *Nature* 453:383–386.
- MANN, D. H., AND D. M. PETEET. 1994. Extent and timing of the last glacial maximum in southwestern Alaska. *Quaternary Research* 42:136–142.
- MARSHALL, C. R. 1990. The fossil record and estimating divergence times between lineages: maximum divergence times and the importance of reliable phylogenies. *Journal of Molecular Evolution* 30:400–408.
- MITCHELL, E. D. 1968. The Enaliarctinae, a new group of extinct aquatic Carnivora and a consideration of the origin of the Otariidae. *Bulletin of the American Museum of Natural History* 151:203–284.
- O'CORRY-CROWE, G., ET AL. 2006. Demographic independence along ecosystem boundaries in Steller sea lions revealed by mtDNA analysis: implications for management of an endangered species. *Canadian Journal of Zoology* 84:1796–1809.
- PHILLIPS, C. D., J. W. BICKHAM, J. C. PATTON, AND T. S. GELATT. 2009a. Systematics of Steller sea lions (*Eumatopias jubatus*): subspecies recognition based on concordance of genetics and morphometrics. *Occasional Papers, Museum of Texas Tech University* 283:1–15.
- PHILLIPS, C. D., ET AL. 2009b. Assessing substitution patterns, rates, and homoplasy at HVRI of Steller sea lions, *Eumatopias jubatus*. *Molecular Ecology* 18:3379–3393.
- POSADA, D., AND K. A. CRANDALL. 1998. Modeltest: testing the model of DNA substitution. *Bioinformatics* 14:817–818.
- POSADA, D., K. A. CRANDALL, AND A. R. TEMPLETON. 2000. GeoDis: a program for the cladistic nested analysis of the geographical distribution of genetic haplotypes. *Molecular Ecology* 9:487–488.
- REPENNING, C. A. 1976. Adaptive evolution of sea lions and walruses. *Systematic Zoology* 25:375–390.
- ROHLING, E. J., M. FENTON, F. J. JORISSEN, P. BETRAND, G. GANSEN, AND J. P. CAULET. 1998. Magnitudes of sea-level lowstands of the past 500,000 years. *Nature* 394:162–165.
- RONQUIST, F., AND J. P. HUELSENBECK. 2003. MrBayes 3: Bayesian phylogenetic inference under mixed models. *Bioinformatics* 19:1572–1574.
- SHIMODAIRA, H. 2002. An approximately unbiased test of phylogenetic tree selection. *Systematic Biology* 51:492–508.
- SHIMODAIRA, H., AND M. HASEGAWA. 2001. CONSEL: for assessing the confidence of phylogenetic tree selection. *Bioinformatics* 17:1246–1247.
- Swofford, D. L. 2003. PAUP\*: phylogenetic analysis using parsimony (\*and other methods). Version 4.0b 10. Sinauer Associates, Inc., Publishers, Sunderland, Massachusetts.
- TEMPLETON, A. R., E. BOERWINKLE, AND C. F. SING. 1987. A cladistic analysis of phenotypic associations with haplotypes inferred from restriction endonuclease mapping. I. Basic theory and an analysis of alcohol dehydrogenase activity in *Drosophila*. *Genetics* 117:343–351.
- TEMPLETON, A. R., AND C. F. SING. 1993. A cladistic analysis of phenotypic associations with haplotypes inferred from restriction endonuclease mapping. IV. Nested analyses with cladogram uncertainty and recombination. *Genetics* 134:659–669.
- TRITES, A. W., AND C. P. DONNELLY. 2003. The decline of Steller sea lions *Eumatopias jubatus* in Alaska: a review of the nutritional stress hypothesis. *Mammal Review* 33:3–28.
- WESTGATE, J. A., S. J. PREECE, D. G. FROESE, R. C. WALTER, A. S. SANDHU, AND C. E. SCHWEGER. 2001. Dating early and middle (Reid) Pleistocene glaciations in central Yukon by tephrochronology. *Quaternary Research* 56:335–348.
- WILSON, D. E., AND D. M. REEDER (EDS.). 2005. *Mammal species of the world: a taxonomic and geographic reference*. 3rd ed. Johns Hopkins University Press, Baltimore, Maryland.
- YORK, A. E. 1994. The population dynamics of northern sea lions, 1975–1985. *Marine Mammal Science* 10:38–51.

Submitted 1 September 2010. Accepted 23 April 2011.

Associate Editor was Samantha Wisely.

## APPENDIX I

Sample sizes ( $n$ ) for *Eumetopias jubatus* categorized at 4 geographic scales: subspecies, genetically identifiable stock, region, and deme (rookery). Rookery numbers correspond to Fig. 1.

Subspecies	Stock	Region	Rookery	$n$		
<i>E. j. jubatus</i>	Asian	Okhotsk	1. Iony Island	48		
			2. Tuleny Island	50		
			3. Yamsky Island	29		
		Kuril Islands	4. Chernyye Brat'ya	11		
			5. Srednego Island	13		
			6. Raikoke Island	15		
			7. Lovushki Island	13		
			8. Antsiferova Island	17		
			9. Zheleznaya Bay	8		
		Kamchatka Peninsula	10. Kozlova Cape	52		
			11. Medney Island	37		
			Western Aleutian Islands	12. Attu Island	4	
				13. Agatu Island	19	
				14. Buldir Island	24	
			Central Aleutian Islands	15. Kiska Island	13	
				16. Tag Island	10	
				17. Amchitka Island	2	
				18. Ulak Island	6	
				19. Adak Island	20	
				20. Gramp Rocks	2	
				21. Seguam Island	5	
				22. Yunaska Island	11	
				Eastern Aleutian Islands	23. Adugak Island	13
					24. Ogchul Island	2
	25. Bogoslof Island	2				
	26. Akutan Island	24				
	27. Akun Island	1				
	Bering Sea Western Gulf of Alaska	28. Ugumak Island	11			
		29. Amak Island	26			
		30. Walrus Island	16			
		31. Clubbing Rocks	13			
		32. Pinnacle Rocks	4			
		33. Pinnacle Island	4			
		34. Atkins Island	7			
		Central Gulf of Alaska	35. Chowiet Island	19		
			36. Chirikof Island	34		
			37. Marmot Island	6		
			38. Sugarloaf Island	36		
	39. Chiswell Island		2			
	Prince William Sound	40. Fish Island	8			
		41. Seal Rocks	19			
	<i>E. j. monteriensis</i>	Eastern	Southeastern Alaska	42. White Sisters Island	33	
				43. Hazy Island	79	
			British Columbia	44. Forester Island	185	
				45. North Danger Rocks	6	
		Oregon Northern California	46. Triangle Island	8		
			47. Rogue Reef	28		
			Northern California	48. St. George Reef	26	

APPENDIX II

Frequency of HVRI/*Cytb*/*ND1* haplotype linkages across the 3 genetically identifiable stocks. The 1st series of letters in the name refers to the hypervariable region 1 (HVRI) haplotype name, the following number refers to the cytochrome *b* (*Cytb*) haplotype name, and the number after the N in each name refers to the nicotinamide adenine dinucleotide dehydrogenase 1 (*ND1*) haplotype name. GenBank accession numbers for HVRI haplotypes: AY340876–AY340937, FJ948491–FJ948546. GenBank accession numbers for *Cytb* haplotypes: DQ144995–DQ145021, FJ948486–FJ948490. GenBank accession numbers for *ND1* haplotypes: GQ477068–GQ477078.

Gene linkages	Asian stock	Eastern stock	Western stock	Total
A1N6	6	1	27	34
A2N4		31		31
A3N1	2		1	3
A4N1	2			2
AAA27N1	6			6
AAAA1N1	6			6
AAAAAA1N6			3	3
AAAAAAA3N3		2		2
BB1N1	107		62	169
BB10N4		6		6
BB2N4	1	44	1	46
BB3N1	1	3	44	48
BB4N1	40		4	44
BB6N4		5		5
BB9N1	3			3
BBBB1N1	1			1
BBBBB3N3		1		1
BBBBBB2N4		1		1
CC1N1	9	3	22	34
CC16N1	1			1
CCCC3N3		1		1
CCCCC3N3		4		4
CCCCCC3N5		1		1
D3N5		1		1
DD1N1			9	9
DDD3N1			2	2
DDDD3N1	1		1	2
DDDDDD3N3		4		4
DDDDDD1N1			1	1
E1N1	3	2	14	19
EE1N1			1	1
EEEE3N3	1			1
EEEEEE3N5		1		1
FF1N1	5		4	9
FF10N4		2		2
FF4N1	2			2
FF6N4		4		4
FFF19N1			1	1
FFF3N1			1	1
FFFF1N2	5	1	3	9
FFFF23N2			1	1
FFFF36N2	1			1
FFFFFFF3N3		1		1
G1N7	3		8	11
GGG3N11			1	1
GGGG3N5		4		4
H3N3		62		62
H32N3		3		3
HH1N2			9	9

APPENDIX II.—Continued.

Gene linkages	Asian stock	Eastern stock	Western stock	Total
HHH1N1			1	1
HHHHHH35N1	2			2
I3N3		2		2
II1N2			1	1
III1N7	1		1	2
IIII3N3		3		3
J3N3		1		1
JJ3N1			2	2
JJJJJ3N3	1			1
K3N5		26		26
KKK1N1	4		1	5
L3N3		7		7
LL3N3		8		8
LLL1N1	5			5
M3N3		6		6
MMM1N1	10			10
MMM40N1	1			1
N3N3		33		33
NNNNNN3N3		1		1
O3N5		2		2
OOO1N2			2	2
P2N4		6		6
Q2N4		14		14
Q31N4		3		3
QQQ1N2	1			1
R3N4		1		1
RRRR3N4		1		1
S1N2	7	4	82	93
S20N2			1	1
S22N2			3	3
S23N2		1	20	21
SS3N3		2		2
SSSS2N4		1		1
SSSSS3N3	5			5
SSSSS3N5		1		1
T1N2			2	2
T20N2			2	2
TTT4N1	1			1
TTTT1N2			1	1
U1N2	1		2	3
UUU27N1	4			4
UUUU3N11			1	1
VVVV3N3		10		10
VVVVV4N1	2			2
W1N2			8	8
WWW3N3	2			2
WWWV3N5		11		11
WWWWW1N1	2			2
X1N2	1			1
XXXX1N6			1	1
YY3N13		18		18
YYYY10N4		4		4
YYYY27N8	1			1
YYYYY1N1	1			1
Z1N17	4		1	5
Z3N1	6	2	31	39
ZZ3N3		3		3
ZZZ1N1	3		2	5
ZZZZZ3N3		6		6
Total	271	365	385	1,021