



Anastrepha (Diptera: Tephritidae) Species, Their Hosts and Parasitoids (Hymenoptera: Braconidae) in Five Municipalities of the State of Amapá, Brazil

Authors: Jesus-Barros, Cristiane R., Adaime, Ricardo, Oliveira, Manoela N., Silva, Wilson R., Costa-Neto, Salustiano V., et al.

Source: Florida Entomologist, 95(3) : 694-705

Published By: Florida Entomological Society

URL: <https://doi.org/10.1653/024.095.0320>

BioOne Complete (complete.BioOne.org) is a full-text database of 200 subscribed and open-access titles in the biological, ecological, and environmental sciences published by nonprofit societies, associations, museums, institutions, and presses.

Your use of this PDF, the BioOne Complete website, and all posted and associated content indicates your acceptance of BioOne's Terms of Use, available at www.bioone.org/terms-of-use.

Usage of BioOne Complete content is strictly limited to personal, educational, and non - commercial use. Commercial inquiries or rights and permissions requests should be directed to the individual publisher as copyright holder.

BioOne sees sustainable scholarly publishing as an inherently collaborative enterprise connecting authors, nonprofit publishers, academic institutions, research libraries, and research funders in the common goal of maximizing access to critical research.

ANASTREPHA (DIPTERA: TEPHRITIDAE) SPECIES, THEIR HOSTS AND PARASITOIDS (HYMENOPTERA: BRACONIDAE) IN FIVE MUNICIPALITIES OF THE STATE OF AMAPÁ, BRAZIL

CRISTIANE R. JESUS-BARROS¹, RICARDO ADAIME¹, MANOELA N. OLIVEIRA², WILSON R. SILVA³, SALUSTIANO V. COSTA-NETO⁴
AND MIGUEL F. SOUZA-FILHO⁵

¹Embrapa Amapá, Rodovia Juscelino Kubitschek, km 5, No. 2600, Macapá, Amapá, Brasil

²Universidade Federal do Amapá (UNIFAP), Rodovia Juscelino Kubitschek, km 2, Macapá, Amapá, Brasil

³Secretaria de Estado da Educação do Amapá, Avenida FAB, 96, Macapá, Amapá, Brasil

⁴Instituto de Pesquisas Científicas e Tecnológicas do Amapá (IEPA), Rodovia Juscelino Kubitschek, km 10, Macapá, Amapá, Brasil

⁵Instituto Biológico, Rodovia Heitor Penteado, km 3, Campinas, São Paulo, Brasil

Corresponding author; E-mail: adaime@cpafap.embrapa.br

ABSTRACT

A total of 817 samples (1,094.36 kg) of potential fruit fly (Diptera:Tephritidae) hosts were collected from 70 plant species across 29 families in the state of Amapá, Brazil. Twenty-three of these plant species were infested with tephritid larvae. Twelve species of *Anastrepha* were recovered in different proportions: *Anastrepha striata* (82.65%), *Anastrepha coronilli* (6.63%), *Anastrepha obliqua* (5.47%), *Anastrepha distincta* (2.28%), *Anastrepha fraterculus* (2.10%), *Anastrepha parishi* (0.30%), *Anastrepha leptozona* (0.22%), *Anastrepha pickeli* (0.11%), *Anastrepha antunesi* (0.07%), *Anastrepha serpentina* (0.07%), *Anastrepha sororcula* (0.06%), and *Anastrepha zenildae* (0.04%). *Anastrepha striata* was recorded from the greatest number of hosts (14 plant species in 8 families). The periods of occurrence of different *Anastrepha* species were variable, but we observed that *A. striata* was constantly present in *Psidium guajava* and sporadically present in fruits of other hosts. The fruits of wild plant species showed the highest rates of infestation by fruit flies with *Pouteria* sp.1 presenting a rate of (434.29 puparia/kg), followed by *Manihot* sp. (130.43 puparia/kg) and *Inga* sp.5 (120.62 puparia/kg). All of parasitoids recovered from collection of infested fruit were Braconidae: *Doryctobracon areolatus* (95.86%), *Opius bellus* (2.76%), *Asobara anastrephae* (1.07%), and *Utetes anastrephae* (0.31%). The highest percentage of parasitism (8.45%) was observed in samples of *Spondias mombin*.

Key Words: fruit flies, *Anastrepha striata*, wild hosts, native parasitoids, Amazon

RESUMO

Obeve-se 817 amostras de frutos (1.094,36 kg) potencialmente hospedeiros de moscas-das-frutas de 70 espécies vegetais incluídas em 29 famílias, destas 23 espécies apresentaram infestação por Tephritidae. Houve registro de 12 espécies de *Anastrepha*: *Anastrepha striata* (82,65%), *Anastrepha coronilli* (6,63%), *Anastrepha obliqua* (5,47%), *Anastrepha distincta* (2,28%), *Anastrepha fraterculus* (2,10%), *Anastrepha parishi* (0,30%), *Anastrepha leptozona* (0,22%), *Anastrepha pickeli* (0,11%), *Anastrepha antunesi* (0,07%), *Anastrepha serpentina* (0,07%), *Anastrepha sororcula* (0,06%) e *Anastrepha zenildae* (0,04%). *Anastrepha striata* foi a que apresentou maior número de hospedeiros (14 espécies de frutos de 8 famílias). O período de ocorrência das espécies de moscas-das-frutas foi variável, entretanto foi possível observar a presença constante de *A. striata* em *Psidium guajava* e sua ocorrência esporádica nos demais hospedeiros. Os índices de infestação mostraram que os frutos silvestres apresentam as maiores infestações por moscas-das-frutas. *Pouteria* sp.1 apresentou a maior infestação (434,29 pp/kg) seguido de *Manihot* sp. (130,43 pp/kg) e *Inga* sp.5 (120,62 pp/kg). Todos os parasitoides obtidos pertencem à família Braconidae: *Doryctobracon areolatus* (95,86%), *Opius bellus* (2,76%), *Asobara anastrephae* (1,07%) e *Utetes anastrephae* (0,31%). *Spondias mombin* foi o fruto que apresentou maior percentual de parasitismo (8,45%).

Palavras chave: moscas-das-frutas, *Anastrepha striata*, hospedeiros silvestres, parasitoides nativos, Amazônia

Fruit flies of the genus *Anastrepha* Schiner are distributed across the Neotropical Region, where more than 250 species are known. In addition to being the most diverse genus in the neotropics, *Anastrepha* also is the economically relevant group of Tephritidae in the region (Norrbom et al. 1999; Silva et al. 2010). A total of 112 species of *Anastrepha* have been reported in Brazil, placing the country in a prominent position regarding fruit fly diversity on the American continent (Zucchi 2007, 2008).

Fruit flies have a wide variety of native and exotic hosts, as their larvae necessarily develop inside fruits or other plant parts, the occurrence of such flies is intimately associated with the availability of host fruits (Malavasi et al. 2000). Despite the importance of host plant relationship for fruit fly ecology, at least one host is known for only 47% of *Anastrepha* species in Brazil (Zucchi 2008).

Identifying the host plants of Tephritidae is a fundamental stepping stone for the adequate and efficient handling of pest species. The use of a given host by a species of tephritid may vary among populations, depending on host availability and regional fruiting phenology, and on other ecological factors that may modify the fitness of larvae on different plants, or such use may simply be the result of the existence of different hosts in different regions within the geographical range of the species (Bernays & Graham 1988; Nascimento et al. 2000; Selivon 2000; Hernandez-Ortiz & Aluja 2004). Knowing the wild hosts and infestation rates of pest species is also important in trying to control/regulate them.

The recent intensification of studies on native hosts of fruit flies in little-disturbed areas has been providing relevant information on fruit fly/host associations. These works have been fundamentally important to the clarification of host use patterns and the ecological and evolutionary processes pertinent to these insects (Uramoto et al. 2008). These studies are also important for determining interactions among different species competing for different hosts.

In the Brazilian Amazon, the available knowledge on fruit flies and their hosts expanded considerably in recent years, with 60 species of *Anastrepha* recorded thus far (Trindade & Uchôa 2011; Zucchi et al. 2011). The state of Amapá, where 33 species of *Anastrepha* have been reported to date, has been making substantial contributions to knowledge on *Anastrepha* species richness and their hosts in Amazonian ecosystems (Zucchi 2008; Trindade & Uchôa 2011); and the list of known hosts is constantly increasing (Jesus et al. 2008ab, 2010; Silva et al. 2009).

Aluja (1999) points out that native fruit flies may be at risk of extinction because of the rapid devastation of tropical forests. This makes it urgent and essential for conservation purposes to

know not only the existing species of *Anastrepha*, but especially their relationship with native and/or wild hosts and tritrophic interactions among wild tephritoids, their host plants and parasitoids in these environments.

The purpose of this work was to identify the species of *Anastrepha*, their natural and introduced hosts and the associated parasitoid species in 5 municipalities of the eastern zone of the Brazilian state of Amapá.

MATERIALS AND METHODS

The Brazilian state of Amapá is located in the Eastern Amazon, bordering the state of Pará to the South and West, the Atlantic Ocean to the East, French Guiana to the North, and Suriname to the Northwest (Fig. 1) (Porto 2007). Fruits were collected from urban and rural areas of the municipalities of Cutias do Araguaari, Itauba do Piririm, Ferreira Gomes, Pracuúba, and Tartarugalzinho in eastern Amapá (Fig. 1). The sampled region is located between latitudes N 00° 30' 14.8" and N 01° 45' 37.2" and between longitudes W 50° 41' 51.4" and 51° 14' 15.7". The climates prevailing in the region, according to the Köppen-Geiger classification, are Aw (tropical savanna) and Am (tropical monsoon) with an average annual precipitation of 2,300 mm to 2,400 mm (Pell et al. 2007). The rainy period is from Jan to Jun, and a characteristically dry period occurs most often between Sep and Nov. The average annual temperature is 26 °C (IBGE 2011). The vegetation in this region is comprised of "Cerrado", floodplain forest, dry-land forest, and cerrado/forest and cerrado/floodplain transition forests (IEPA 2002).

Fruits of native, subspontaneous or naturalized and exotic plant species were collected at monthly intervals between Feb 2006 and Aug 2007 in urban and rural areas of each of the 5 municipalities. At each collection event, fruits of potential fruit fly hosts were sampled at random from different ecosystems. The fruits were collected directly off the plants or from the ground (if recently fallen), from plants that bore abundant numbers of maturing or ripe fruits.

The fruits were stored in coolers or cotton sacks (depending on the characteristics of each fruit), then transported to the Laboratório de Entomologia at Embrapa Amapá, in the city of Macapá. In the laboratory, fruit samples were processed to retrieve tephritid and parasitoid pupae, as per Silva et al. (2011a).

After adult emergence, tephritids and braconids were identified with identification keys (Zucchi 2000; Canal & Zucchi 2000). Voucher specimens were deposited in the Laboratório de Entomologia at Embrapa Amapá (Macapá, Amapá, Brazil).

For those plants that could not be identified in the field botanical material consisting of dried

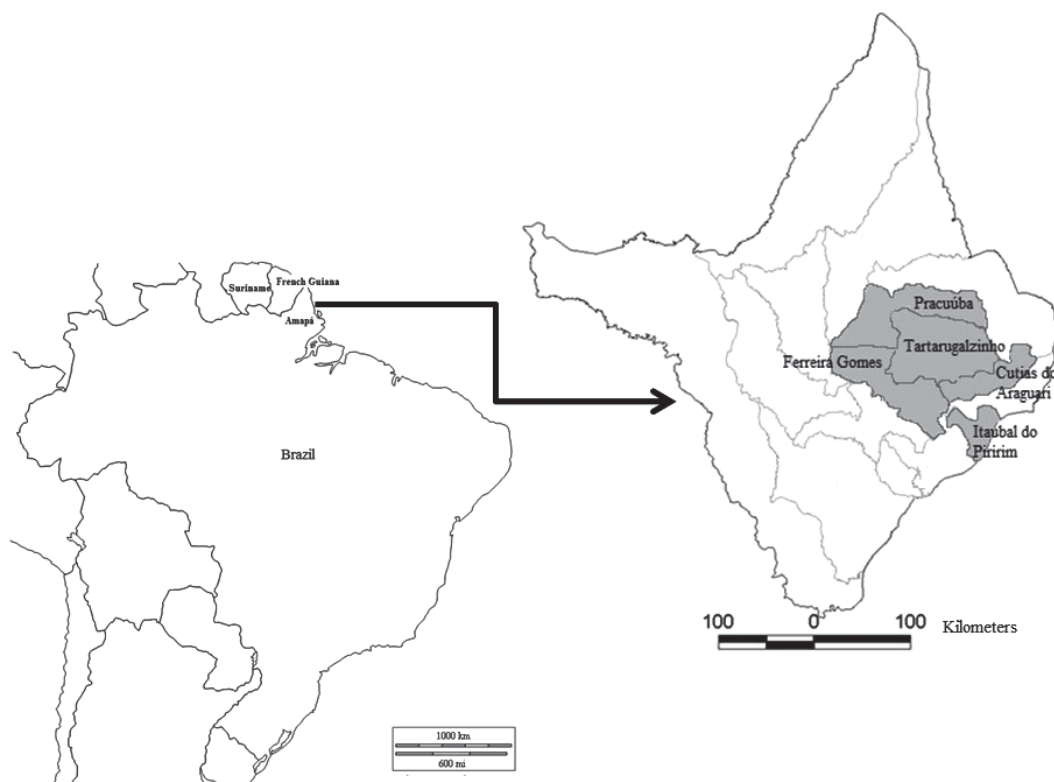


Fig. 1. Municipalities in the State of Amapá where the fruits were collected, Feb 2006 to Aug 2007.

pressed specimens was collected for later identification as per Fidalgo & Bononi (1984). Dried specimens were prepared and deposited at the Herbário Amapaense (HAMAB) of the Instituto de Pesquisas Científicas e Tecnológicas do Amapá - IEPA (Macapá, Amapá, Brazil), where they were identified and added to the institute's collection. Taxonomic names were updated to match the List of Species of the Brazilian Flora by the Rio de Janeiro Botanical Garden (Forzza et al. 2010), and plant families were classified according to APGII (2003).

The rates of infestation by fruit flies were expressed as number of puparia per fruit ($I_{pp/f}$) and number of puparia per kilogram of fruit ($I_{pp/kg}$). Percentage of parasitism was calculated as the ratio of emerged parasitoids to known number of puparia ($P = \text{number of emerged parasitoids} / \text{total number of puparia} \times 100$).

RESULTS AND DISCUSSION

A total of 817 samples (1,094.36 kg) of potential fruit fly hosts were collected from 70 plant species across 29 families (Table 1). Among the sampled plant species, *Psidium guajava* L.; Myr-

tales: Myrtaceae (guava) and *Anacardium occidentale* L.; Sapindales: Anacardiaceae (cashew) are the most widely known and commonly grown in other regions of Brazil. Most other species were native (some of them found in a wild state), obtained from backyards or small rural properties where these plants are used for household consumption.

Collection efforts were most strongly focused on Fabaceae (10 species), Myrtaceae (7), and Arecaceae (7) (Fig. 2). Most of the collected families (55.2%) were represented by 3 or more plant species.

Among the sampled species, 22 were infested by *Anastrepha*, and Fabaceae was the family with the highest number of infested species, all of them in the genus *Inga*. This may be a reflection of the locations where collections took place, as *Inga* spp. are frequently found in brushwood areas and forest remnants (Cavalcante 1991) which are more easily accessible and located closer to human dwellings. Myrtaceae was second in number of collected and infested species, followed by Anacardiaceae. It should also be noted that all sampled species of Sapotaceae and Melastomataceae were infested (Fig. 2). Other studies exploring

TABLE 1. PLANT SPECIES SAMPLED IN THE MUNICIPALITIES OF CUTIAS DO ARAGUARI, ITAUBAL DO PIRIRIM, FERREIRA GOMES, PRACUÚBA, AND TARTARUGALZINHO IN AMAPÁ, BRAZIL, FEB 2006 TO AUG 2007.

Family/Species	Origin*	Family/Species	Origin*
Anacardiaceae		Malpighiaceae	
<i>Anacardium occidentale</i> L.	N	<i>Byrsonima crassifolia</i> (L.) Kunth	N
<i>Mangifera indica</i> L.	SS	<i>Malpighia puniceifolia</i> L.	N
<i>Spondias mombin</i> L.	N	Lamiaceae	
<i>Spondias purpurea</i> L.	E	<i>Gmelina arborea</i> Roxb. ex Sm.	N
Annonaceae		Melastomataceae	
<i>Annona paludosa</i> Aubl.	N	<i>Bellucia imperialis</i> Saldanha & Cogn.	N
<i>Annona squamosa</i> L.	E	<i>Bellucia grossularioides</i> (L.) Triana.	N
<i>Annona muricata</i> L.	E	<i>Mouriri acutiflora</i> Naud.	N
<i>Annona mucosa</i> (Jacq.) Bail.	N	Fabaceae	
Apocynaceae		<i>Inga edulis</i> Mart.	N
<i>Ambelania acida</i> Aubl.	N	<i>Inga fagifolia</i> G. Don	N
<i>Couma utilis</i> (Mart.) M. Arg.	N	<i>Inga heterophylla</i> Willd.	N
<i>Parahancornia amapa</i> (Huber) Ducke	N	<i>Inga velutina</i> Willd.	N
Arecaceae		<i>Inga</i> sp. 1	SS
<i>Astrocaryum vulgare</i> L.	N	<i>Inga</i> sp. 2	N
<i>Attalea maripa</i> (Aubl.) Mart.	N	<i>Inga</i> sp. 3	N
<i>Attalea phalerata</i> Mart. ex Spring.	N	<i>Inga</i> sp. 4	N
<i>Bactris maraja</i> Mart.	N	<i>Inga</i> sp. 5	N
<i>Bactris gasipaes</i> Kunth.	N	<i>Inga</i> sp. 6	N
<i>Oenocarpus bacaba</i> Mart.	N	Moraceae	
<i>Oenocarpus distichus</i> Mart.	N	<i>Artocarpus heterophyllus</i> Lam.	SS
Bignoniaceae		<i>Ficus</i> sp.	N
<i>Jacaranda copaia</i> (Aubl.) D. Don	N	Myrtaceae	
Bromeliaceae		<i>Campomanesia xanthocarpa</i> O. Berg.	N
<i>Ananas ananassoides</i> (Baker) L.B. Sm.	N	<i>Eugenia cumini</i> (L.) Druce	SS
<i>Ananas comosus</i> (L.) Merr.	N	<i>Eugenia luschnathiana</i> Klotzsch ex O. Berg	SS
Burseraceae		<i>Eugenia malaccensis</i> L.	N
<i>Protium heptaphyllum</i> (Aubl.) March.	N	<i>Psidium guajava</i> L.	N
<i>Trattinnickia burserifolia</i> Mart.	N	<i>Psidium guineense</i> SW	N
Caricaceae		<i>Psidium</i> sp. 2	N
<i>Carica papaya</i> L.	SS	Oxalidaceae	
Caryocaraceae		<i>Averrhoa bilimbi</i> L.	SS
<i>Caryocar glabrum</i> Pers.	N	<i>Averrhoa carambola</i> L.	SS
Chrysobalanaceae		Passifloraceae	
<i>Licania macrophylla</i> Benth.	N	<i>Passiflora</i> sp. 1	N
<i>Chrysobalanus icaco</i> L.	N	<i>Passiflora</i> sp. 2	N
Dilleniaceae		Rubiaceae	
<i>Doliocarpus</i> sp.	N	<i>Coffea arabica</i> L.	SS
Dioscoreaceae		Rutaceae	
<i>Dioscorea alata</i> L.	N	<i>Citrus sinensis</i> (L.) Osbeck.	SS
Euphorbiaceae		<i>Citrus</i> sp.	N
<i>Manihot</i> sp.	N	Sapotaceae	
Celastraceae		<i>Pouteria caimito</i> (Ruiz & Pav.) Radlk.	N
<i>Cheiloclinium cognatum</i> (Miers) A.C. Sm.	N	<i>Pouteria</i> sp. 1	N
Humiriaceae		<i>Pouteria</i> sp. 2	N
<i>Endopleura uchi</i> (Huber) Cuatrec.	N	Solanaceae	
Lauraceae		<i>Solanum paniculatum</i> L.	N
<i>Licaria mahuba</i> (A. Samp.) Kostern.	N		
<i>Persea americana</i> Mill.	SS		

* N = native species, E = exotic species, SS = subsponaneous.

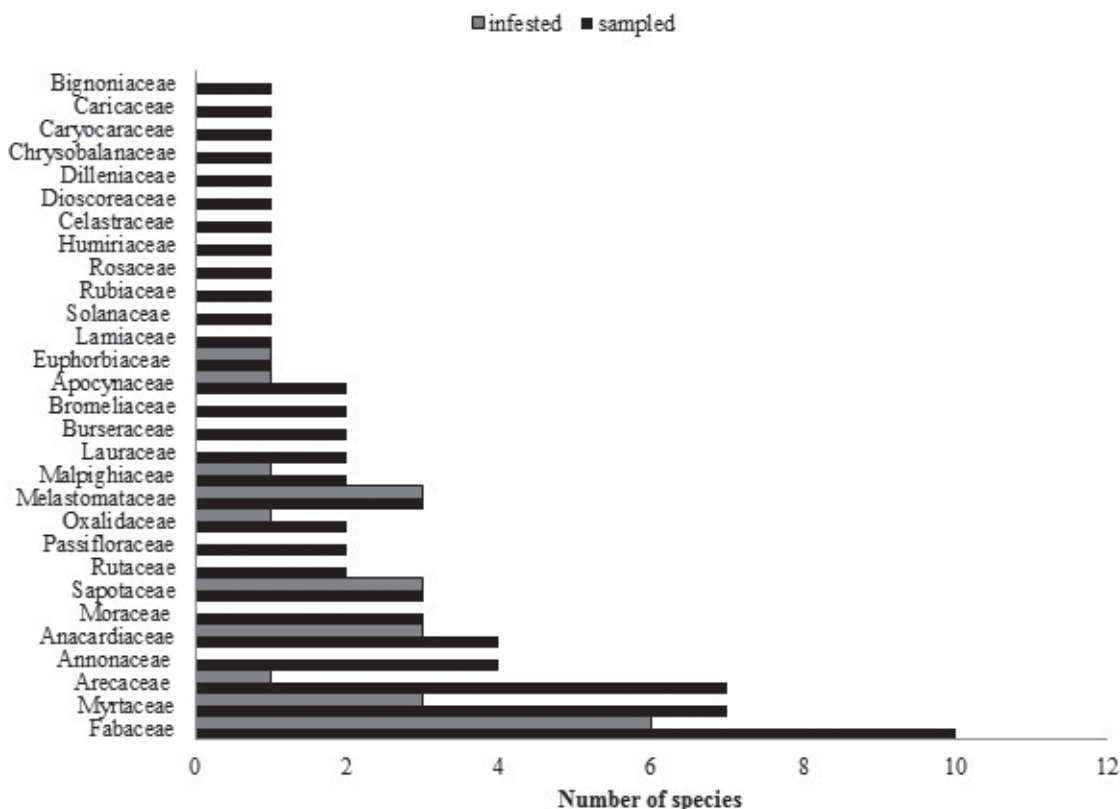


Fig. 2. Number of sampled and infested plant species, by family, in Cutias do Araguari, Itaupal do Pírim, Ferreira Gomes, Pracuúba, and Tartarugalzinho, Amapá, Brazil, Feb 2006 to Aug 2007.

wild fruits in Brazil have emphasized Myrtaceae as the plant family with the highest rates of infestation by Tephritidae. Uramoto et al. (2008) analyzed the associations of tephritids with native hosts in the state of Espírito Santo, where they collected fruit samples from 248 plant species (51 families). Among them, Myrtaceae was the most diversified family. Silva et al. (2010) studied the diversity of *Anastrepha* in native and exotic hosts in the state of Bahia. The authors collected fruits of 27 plant species (15 families), of which only 6 families were infested by *Anastrepha* of which the Myrtaceae had the highest infestation rate.

The tephritids obtained in this work all belonged to the genus *Anastrepha*. We did not collect any *Bactrocera carambolae* Drew & Hancock and *Ceratitís capitata* (Wiedemann). *Bactrocera carambolae* is found only in the state of Amapá where an eradication program is underway (Godoy et al. 2011). *Ceratitís capitata* has not been detected in the state (Silva et al. 2011). Twelve species of *Anastrepha* were identified (Table 2): *Anastrepha striata* Schiner (82.65%), *Anastrepha coronilli* Carrejo & González (6.63%), *Anastrepha obliqua* (Macquart) (5.47%), *Anastrepha distincta* Greene (2.28%), *Anastrepha fraterculus* (Wiedemann) (2.10%), *Anastrepha parishi* Stone

(0.30%), *Anastrepha leptozona* Hendel (0.22%), *Anastrepha pickeli* Lima (0.11%), *Anastrepha antunesi* Lima (0.07%), *Anastrepha serpentina* (Wiedemann) (0.07%), *Anastrepha sororcula* Zucchi (0.06%), and *Anastrepha zenildae* Zucchi (0.04%).

Anastrepha striata had by far the highest number of hosts (14 species of fruit belonging to 8 families) (Table 2). *Anastrepha fraterculus* was observed in 5 host species (4 families). Studies conducted in the Southeast and Northeast regions of Brazil have reported *A. fraterculus* as the most polyphagous species (Uramoto et al. 2008; Silva et al. 2010). However, in the Amazon region, this species has been reported on only 10 hosts, whereas *A. striata* has a higher number of known hosts: 28 species in 16 botanical families (Zucchi et al. 2011). Deus et al. (2009), while studying fruit flies in the municipalities of Pedra Branca do Amapari and Serra do Navio in the state of Amapá, indicated that *A. striata* has the highest number of hosts and is the most abundant species in guava fruits, confirming its supremacy in North Brazil in relation to *A. fraterculus*, which is the predominant tephritid in guava in Southeast Brazil. In fact, *A. striata* is seen as the biogeographical opposite of *A. fraterculus* because it becomes gradually more common as one moves

TABLE 2. *ANASTREPHA* SPECIES, HOSTS AND PERIOD OF OCCURRENCE IN FRUITS COLLECTED IN CUTIAS DO ARAGUARI, ITAUBAL DO PIRIRIM, FERREIRA GOMES, PRACUUBA, AND TARTARUGALZINHO IN AMAPÁ, BRAZIL, FEB 2006 TO AUG 2007.

Host plant	Period and site of sampling*																						
	2006						2007																
Tephritidae	Family	Species	F	M	A	M	J	J	A	S	O	N	D	J	F	M	A	M	J	J	A		
<i>A. antunesi</i>	Anacardiaceae	<i>S. mombin</i>													P								
	Melastomataceae	<i>B. imperialis</i>																					
<i>A. coronilli</i>	Melastomataceae	<i>B. imperialis</i>																					
	Myrtaceae	<i>P. guajava</i>	T	CT	T	FT	FT	IT	CFT	T	T	T	T							F	F	CFT	CF
<i>A. distincta</i>	Fabaceae	<i>Ingo</i> sp.1																					
		<i>Ingo</i> sp.4																					
		<i>Ingo</i> sp.5																					
		<i>I. edulis</i>																					
	Myrtaceae	<i>I. fagiifolia</i>																					
	Oxalidaceae	<i>P. guajava</i>																					
		<i>A. carambola</i>																					
<i>A. fraterculus</i>	Anacardiaceae	<i>A. occidentale</i>																					
		<i>S. mombin</i>	T	I																			
	Malpighiaceae	<i>B. crassifolia</i>																					
	Melastomataceae	<i>M. acutiflora</i>																					
	Myrtaceae	<i>P. guajava</i>	T	T	CP																		
<i>A. leptozona</i>	Sapotaceae	<i>Pouteria</i> sp. 1																					
<i>A. obliqua</i>	Anacardiaceae	<i>S. mombin</i>	CT	CFIP	FP	CFIP																	
		<i>S. purpurea</i>																					
<i>A. parishi</i>	Melastomataceae	<i>B. imperialis</i>																					
	Myrtaceae	<i>P. guajava</i>																					
<i>A. pickeli</i>	Euphorbiaceae	<i>Manihot</i> sp.																					
<i>A. serpenitina</i>	Sapotaceae	<i>Pouteria</i> sp. 2																					
<i>A. sororcula</i>	Melastomataceae	<i>B. grossularioides</i>																					
		<i>M. acutiflora</i>																					
<i>A. striata</i>	Anacardiaceae	<i>A. occidentale</i>																					
		<i>S. mombin</i>																					
	Apocynaceae	<i>C. utilis</i>																					
	Arecaceae	<i>O. bacaba</i>																					
	Fabaceae	<i>Ingo</i> sp.1																					
		<i>Ingo</i> sp.4																					
		<i>Ingo</i> sp.5																					
	Malpighiaceae	<i>B. crassifolia</i>																					
	Melastomataceae	<i>B. grossularioides</i>																					
	Myrtaceae	<i>B. imperialis</i>																					
		<i>E. lusechnathiana</i>																					
		<i>P. guajava</i>																					
		<i>P. guineense</i>																					
	Oxalidaceae	<i>A. carambola</i>																					
<i>A. zenildae</i>	Myrtaceae	<i>P. guajava</i>																					

*C = Cutias do Araguari, F = Ferreira Gomes, I = Itaúbal do Piririm, T = Tartarugalzinho, P = Pracúba.

TABLE 3. HOSTS AND NUMBER OF INDIVIDUALS OF *ANASTREPHA* IN FRUITS COLLECTED IN CÚTIAS DO ARAGUARI, ITAUBAL DO PIRIRIM, FERREIRA GOMES, PRACUÚBA, AND TARTARUGALZINHO IN AMAPÁ, BRAZIL, FEB 2006 TO AUG 2007.

Host plant			
Family	Species	Common name	<i>Anastrepha</i> (number of females)
Anacardiaceae	<i>A. occidentale</i>	Cashew	<i>A. striata</i> (3) <i>A. fraterculus</i> (1)
	<i>S. mombin</i>	Hog plum	<i>A. striata</i> (33) <i>A. obliqua</i> (282) <i>A. fraterculus</i> (9) <i>A. antunesi</i> (1)
	<i>S. purpurea</i>	Jocote	<i>A. obliqua</i> (4)
Apocynaceae	<i>C. utilis</i>	Sorva	<i>A. striata</i> (48)
Arecaceae	<i>O. bacaba</i>	Bacaba	<i>A. striata</i> (24)
Euphorbiaceae	<i>Manihot</i> sp.	Cassava fruit	<i>A. pickelli</i> (6)
Fabaceae	<i>I. edulis</i>	Ice-cream-bean	<i>A. striata</i> (98) <i>A. distincta</i> (157)
	<i>I. fagifolia</i>	Sweet pea	<i>A. distincta</i> (3)
	<i>I. velutina</i>	"Hairy inga"	<i>A. striata</i> (8)
	<i>Inga</i> sp.1	Inga	<i>A. striata</i> (4) <i>A. distincta</i> (103)
	<i>Inga</i> sp.4	"Dwarf inga"	<i>A. striata</i> (8) <i>A. distincta</i> (70)
	<i>Inga</i> sp.5	Monkey inga	<i>A. distincta</i> (35)
Malpighiaceae	<i>B. crassifolia</i>	Nance	<i>A. striata</i> (1) <i>A. fraterculus</i> (5)
Melastomataceae	<i>B. grossularioides</i>	Goiaba-de-anta	<i>A. striata</i> (24) <i>A. coronilli</i> (225) <i>A. antunesi</i> (3)
	<i>B. imperialis</i>	Red goiaba-de-anta	<i>A. striata</i> (1) <i>A. sororcula</i> (1) <i>A. coronilli</i> (115) <i>A. parishi</i> (1)
	<i>M. acutiflora</i>	Mamuriballi	<i>A. fraterculus</i> (3) <i>A. sororcula</i> (2)
Myrtaceae	<i>E. luschnathiana</i>	Pitomba	<i>A. striata</i> (3)
	<i>P. guajava</i>	Guava	<i>A. striata</i> (4,176) <i>A. parishi</i> (15) <i>A. coronilli</i> (16) <i>A. fraterculus</i> (95) <i>A. distincta</i> (13) <i>A. zenildae</i> (2)
	<i>P. guineense</i>	Brazilian guava	<i>A. striata</i> (6)
Oxalidaceae	<i>A. carambola</i>	Star Fruit	<i>A. striata</i> (20) <i>A. distincta</i> (1)
Sapotaceae	<i>Pouteria</i> sp. 1	Native abiu	<i>A. leptozona</i> (12)
	<i>Pouteria</i> sp. 2	Wild abiu	<i>A. serpentina</i> (4)

northward along its distribution in Brazil (Malavasi et al. 2000).

Anastrepha distincta Greene was observed in 7 hosts, 5 of which belonged to *Inga* (Fabaceae), indicating that the species presents an intimate association with this plant genus (Table 2). *Anastrepha distincta* in Amapá showed a narrower spectrum of hosts than that reported in other

studies, for among the 8 plant species where this tephritid has been reported in the Brazilian Amazon, 4 are Fabaceae, 2 Clusiaceae, 1 Myrtaceae, and 1 Anacardiaceae (Zucchi et al. 2011).

Some species were observed in only one host: *A. serpentina* in *Pouteria* sp.2; *A. leptozona* in *Pouteria* sp.1; *A. zenildae* in *P. guajava*, and *A. pickeli* in *Manihot* sp. (Table 2). The latter is the

first record of a host of *A. pickeli* in the Brazilian Amazon, and this species is found in all regions of the country, where 2 host plant species have been reported to date (Zucchi 2008). However, only *A. pickeli* has been reported in the Amazon, and until now had been collected as adults with McPhail traps. *Anastrepha pickeli* belongs to the *spatulata* group, in which some species infest *Manihot* spp. and use a specialized mechanism to detoxify the glycosides present in these fruits (Selivon 2000).

The periods of occurrence of the different tephritid species were variable. *Anastrepha striata* was constantly present in *P. guajava*, with sporadic presence detected in other hosts (Table 2). It is a generalist species that occurs in 27 host species from 11 families, with a strong preference for hosts of the genus *Psidium* (Myrtaceae) (Selivon 2000; Norrbom 2005; Weems & Fasulo 2009).

Adult flies were obtained from 22 plant species, most of them wild (Table 3). *Anastrepha striata* was collected in greatest abundance (the highest number of individuals) in a single host species (4,176 specimens in *P. guajava*), followed by *A. obliqua* (282 in *Spondias mombin*), and *A. coronilli* (225 in *Bellucia grossularioides* L.) (Table 3). According to Silva et al. (2011), *A. striata* is not only the species with the highest number

of hosts, it is also the most abundant and widely distributed *Anastrepha* species in the state of Amapá.

Anastrepha parishi was found in *P. guajava* and *Bellucia imperialis*, expanding its list of known hosts in Brazil after having been reported recently in fruits of *Oenocarpus bacaba* (Arecaceae) (Jesus et al. 2008a; Zucchi et al. 2011). Adaime et al. (2012) published the first host record of *A. parishi* in *Myrciaria dubia* Mc Vaughn in the state of Roraima, Brazil.

Anastrepha striata and *A. fraterculus* were found in *Anacardium occidentale* (Table 3). Cashew has already been reported as a host of *A. striata* in Amapá, *A. leptozona* in Amazonas, and *A. obliqua* in Tocantins (Jesus et al. 2008b; Zucchi et al. 2011) but this is the first report of *A. occidentale* as a host of *A. fraterculus* in Brazil.

Of all the collected fruits, 23 species were infested. In *P. caimito* was only recorded the emergence of adult braconid parasitoids but no tephritids, whereas the other infested plant species revealed the presence of both *Anastrepha* and parasitoids. All the collected samples of *Inga* sp. 4, *Inga* sp. 5, *Manihot* sp., *Pouteria* sp. 1, *Pouteria* sp. 2, and *Psidium guineense* were infested (Table 4). An analysis of infestation rates showed

TABLE 4. NUMBER OF SAMPLES, NUMBER OF FRUITS, HOST WEIGHT, NUMBER OF TEPHRITIDAE PUPARIA, AND INFESTATION RATE OF FRUITS COLLECTED IN CUTIAS DO ARAGUARI, ITAUBAL DO PIRIRIM, FERREIRA GOMES, PRACUÚBA, AND TARTARUGALZINHO IN AMAPÁ, BRAZIL, FEB 2006 TO AUG 2007.

Hosts	Samples*			Fruits (n)	Mass (kg)	Puparia (n)	Infestation rate	
	C	I	%				I _{pp/kg}	I _{pp/f}
<i>A. occidentale</i>	29	5	17.2	438	24.80	19	0.77	0.04
<i>A. carambola</i>	51	3	5.9	665	76.34	99	1.30	0.15
<i>B. grossularioides</i>	30	28	93.3	1,892	21.16	636	30.06	0.34
<i>B. imperialis</i>	32	26	81.3	2,199	32.15	1,533	47.68	0.70
<i>B. crassifolia</i>	7	1	14.3	3,044	6.37	7	1.10	0.00
<i>C. utilis</i>	5	2	40.0	163	4.12	324	78.64	1.99
<i>E. luschnathiana</i>	3	1	33.3	185	0.44	8	18.18	0.04
<i>I. edulis</i>	95	48	50.5	325	63.62	538	8.46	1.66
<i>I. fagifolia</i>	8	1	12.5	508	6.02	10	1.66	0.02
<i>Inga</i> sp. 1	17	10	58.8	313	24.75	466	18.83	1.49
<i>Inga</i> sp. 4	4	4	100.0	213	2.69	252	93.68	1.18
<i>Inga</i> sp. 5	1	1	100.0	130	0.97	117	120.62	0.90
<i>I. velutina</i>	6	2	33.3	115	2.92	156	53.42	1.36
<i>Manihot</i> sp.	3	3	100.0	126	0.23	30	130.43	0.24
<i>M. acutiflora</i>	2	1	50.0	225	0.59	40	67.80	0.18
<i>O. bacaba</i>	13	4	30.8	8,130	26.24	110	4.19	0.01
<i>P. caimito</i>	12	2	16.7	101	7.01	64	9.13	0.63
<i>Pouteria</i> sp. 1	2	2	100.0	51	0,175	76	434.29	1.49
<i>Pouteria</i> sp. 2	1	1	100.0	2	0.39	5	12.82	2.50
<i>P. guajava</i>	255	222	87.1	9,657	425.97	17,531	41.16	1.82
<i>P. guineense</i>	2	2	100.0	145	2.12	32	15.09	0.22
<i>S. mombin</i>	55	51	92.7	9,454	126.97	2,721	21.43	0.29
<i>S. purpurea</i>	3	1	33.3	75	0.86	26	30.23	0.35

*C: collected, I: infested, %: percentage of infested samples.

that wild fruits were more infested by *Anastrepha* than introduced plant species. In terms of puparia/kg of fruit, *Pouteria* sp.1 was the most infested (434.29 pp/kg), followed by *Manihot* sp. (130.43 pp/kg) and *Inga* sp.5 (120.62 pp/kg). In terms of puparia/fruit, *Pouteria* sp. 2 (2.5 pp/fruit) and *C. utilis* (1.99 pp/fruit) presented the highest rates. According to Silva et al. (2011b), the highest reported infestation rates in the state of Amapá occur in native fruits of the Amazon region, where usually only 1 species of *Anastrepha* is present or predominant. We also highlight the considerable infestation rates found in guava (41.16 pp/kg and 1.82 pp/fruit), which are similar to the ones already reported in other studies in the state of Amapá (from 13.3 to 58.3 pp/kg) (Silva et al. 2011b). Araújo & Zucchi (2003) reported that guava is one of the most tephritid-infested fruits in Brazil, with infestation rates varying across different regions of the country, and influenced mainly by rainfall and host availability. Infestation ranged from 35 to 118 pp/kg in their experiment in Northeast Brazil, which caused a 78-100% loss of guava crops.

The efficient control of fruit fly populations requires the integration of several methods, including cultural, mechanical, biological, and chemical. However, some basic pre-requisites are indispensable for the successful implementation of an integrated control system for fruit flies, such as knowledge of the bio-ecology of fruit infesting populations, as well as the phenology and distribution of their host plant species and natural enemies. Nevertheless, the use of Braconidae parasitoids has been intensified in several countries of America (Ovruski et al. 2000).

The present work recorded a total of 652 specimens of parasitoids, all of them Braconidae: *Doryctobracon areolatus* (Szépligeti, 1911) (95.86%), *Opius bellus* Gahan, 1930 (2.76%), *Asobara anastrephae* (Muesebeck, 1958) (1.07%), and *Utetes anastrephae* (Viereck, 1913) (0.31%) (Fig. 3). *Doryctobracon areolatus* was the most abundant and was present in all plant species where parasitoid emergence was observed (Fig. 3). The predominance of *D. areolatus* in the state of Amapá had already been highlighted by Silva et al. (2011b). This species has been revealing itself to be an important parasitoid in Brazil and Latin America, both on account of its abundance and its widespread distribution (Canal & Zucchi 2000; Carvalho et al. 2010; Leonel Jr. et al. 1995; Ovruski et al. 2000).

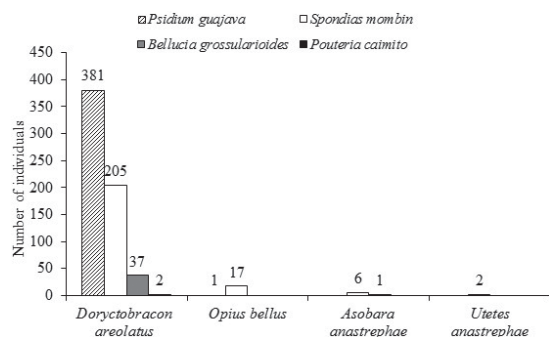


Fig. 3. Parasitoids found in plant species sampled in Cutias do Araguari, Itaupal do Pírim, Ferreira Gomes, Pracuúba, and Tartarugalzinho, Amapá, Brazil, Feb 2006 to Aug 2007.

Although guava presented the highest ratio of number of adult parasitoids to number of observed puparia, *S. mombin* (hog plum) was the plant species with the highest rate of parasitoid occurrence (8.45%) (Fig. 4), hog plum also contained the highest parasitoid species richness (Fig. 4b). In a study on parasitoids of tephritids in the state of Amazonas, Canal et al. (1995) also reported that the majority of parasitoids were obtained from hog plum. According to Leonel (1991), these fruits might be subject to intense parasitism because parasitoids can find host larvae with more ease in fruits of small size, thin skin and shallow flesh, such as those of hog plum. According to Sivinski et al. (1997), smaller fruit attracts parasitoids with short ovipositors because it is

ryctobracon areolatus was the most abundant and was present in all plant species where parasitoid emergence was observed (Fig. 3). The predominance of *D. areolatus* in the state of Amapá had already been highlighted by Silva et al. (2011b). This species has been revealing itself to be an important parasitoid in Brazil and Latin America, both on account of its abundance and its widespread distribution (Canal & Zucchi 2000; Carvalho et al. 2010; Leonel Jr. et al. 1995; Ovruski et al. 2000).

Although guava presented the highest ratio of number of adult parasitoids to number of observed puparia, *S. mombin* (hog plum) was the plant species with the highest rate of parasitoid occurrence (8.45%) (Fig. 4), hog plum also contained the highest parasitoid species richness (Fig. 4b). In a study on parasitoids of tephritids in the state of Amazonas, Canal et al. (1995) also reported that the majority of parasitoids were obtained from hog plum. According to Leonel (1991), these fruits might be subject to intense parasitism because parasitoids can find host larvae with more ease in fruits of small size, thin skin and shallow flesh, such as those of hog plum. According to Sivinski et al. (1997), smaller fruit attracts parasitoids with short ovipositors because it is

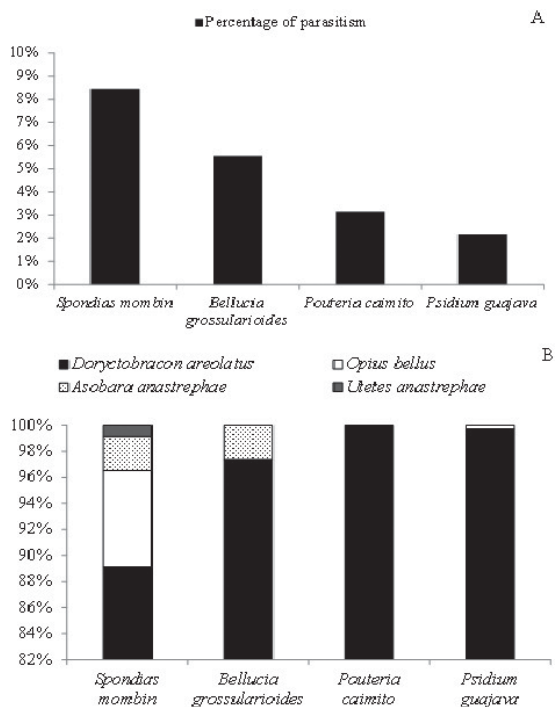


Fig. 4. Percentage of parasitism per plant species (a) and per parasitoid species (b) in *Anastrepha* individuals obtained from fruits collected in Cutias do Araguari, Itaupal do Pírim, Ferreira Gomes, Pracuúba, and Tartarugalzinho, Amapá, Brazil, Feb 2006 to Aug 2007.

TABLE 5. NUMBER OF PARASITIDS OBSERVED IN *ANASTREPHA* SPECIES FOUND IN FRUITS COLLECTED IN CUTIAS DO ARAGUARI, ITAUBAL DO PIRIRIM, FERREIRA GOMES, PRACUÚBA, AND TARTARUGALZINHO IN AMAPÁ, BRAZIL, FEB 2006 TO AUG 2007.

	<i>Doryctobracon areolatus</i> (n)	<i>Opius bellus</i> (n)	<i>Asobara anastrephae</i> (n)	<i>Utetes anastrephae</i> (n)
<i>A. coronilli</i>	136	0	0	0
<i>A. distincta</i>	7	0	0	0
<i>A. fraterculus</i>	78	0	2	0
<i>A. obliqua</i>	95	15	1	2
<i>A. parishi</i>	2	0	0	0
<i>A. striata</i>	307	3	4	0

easier to find fly larvae, whereas parasitoids with long ovipositors are able to seek larvae in fruits of varying flesh thicknesses. This means that parasitoids with long ovipositors (>6 mm) occur on fruits of all sizes, whereas parasitoids with smaller ovipositors (<3 mm) can only infest the larvae found in small fruits. *Doryctobracon areolatus* has a long ovipositor and this characteristic is a factor explaining to its predominant position as the most common parasitoid of fruit fly larvae in the braconid's natural distribution range. Other studies in the state of Amapá have shown the importance of hog plum as a "reservoir" of parasitoids (Silva et al. 2007; Cunha et al. 2011).

A parasitoid/fruit fly association can be established when a single species of fly and a single species of parasitoid are the only ones to emerge in the same rearing container (Leonel Jr. et al. 1996). We were able to confirm that *D. areolatus* is associated with 6 species of *Anastrepha*; the parasitoids *A. anastrephae*, *O. bellus* and *U. anastrephae* were associated with 3, 2, and 1 species respectively (Table 5). For the state of Amapá records of *U. anastrephae* infesting *A. obliqua*, *D. areolatus* infesting *A. fraterculus* and *A. parishi*, and *A. anastrephae* infesting *A. fraterculus* are first-time reports.

In conclusion, based on fruit sampling in 5 municipalities in eastern Amapá, it is possible conclude that *A. striata* is the most abundant and polyphagous tephritid species in the region. The highest rates of infestation by *Anastrepha* were found in wild plant species. The highest parasitism levels occurred in fruits of *S. mombin* and *D. areolatus* was the most abundant parasitoid species.

ACKNOWLEDGMENTS

To Mr. Carlos Alberto Moraes for his assistance during fruit collection. To the anonymous reviewers and the editor for their contribution in this manuscript. Also, we thank the Conselho Nacional de Desenvolvimento Científico e Tecnológico (CNPq) for granting a Regional Scientific Development Fellowship to CRJB, a Research Productivity Fellowship to RA and an Undergraduate Research Fellowship to MNO; and the Secretaria de Estado da Ciência e Tecnologia do Amapá for financial aid to this research.

REFERENCES CITED

- ADAIME, R., MARSARO JÚNIOR, A. L., SOUZA-FILHO, M. F., CHAGAS, E. A., AND LIMA, C. G. B. 2012. New host of *Anastrepha parishi* Stone (Diptera: Tephritidae) reported in Brazil. Brazilian J. Biol. 72(1): 227.
- ALUJA, M. 1999. Fruit fly (Diptera: Tephritidae) research in Latin America: myths, realities and dreams. An. Soc. Entomol. Brasil 28(4): 565-594.
- APG II (ANGIOSPERM PHYLOGENY GROUP). 2003. An update of the angiosperm phylogeny group classification of the orders and families of flowering plants: APGII. Bot. J. Linn. Soc. 141: 399-436.
- ARAÚJO, E. L., AND ZUCCHI, R. A. 2003. Moscas-das-frutas (Diptera: Tephritidae) em goiaba (*Psidium guajava* L.) em Mossoró, RN. Arq. Inst. Biol. 70(1): 73-77.
- BERNAYS, E., AND GRAHAM, M. 1988. On the evolution of host specificity in phytophagous arthropods. Ecology. 69: 886-892.
- CANAL, D. N. A., ZUCCHI, R. A., SILVA, N. M., AND SILVEIRA NETO, S. 1995. Análise faunística dos parasitoides (Hymenoptera, Braconidae) de *Anastrepha* spp. (Diptera, Tephritidae) em Manaus e Iranduba, Estado do Amazonas. Acta Amazon. 25 (3/4): 235-246.
- CANAL, D. N. A., AND ZUCCHI, R. A. 2000. Parasitoides—Braconidae, pp. 119-126 In A. Malavasi and R. A. Zucchi [eds.], Moscas-das-frutas de importância econômica no Brasil: conhecimento básico e aplicado. Holos. Ribeirão Preto.
- CARVALHO, R. S., SOARES FILHO, W. S. AND RITZINGER, R. 2010. Umbu-cajá como repositório natural de parasitoides nativo de moscas-das-frutas. Pesqui. Agropecu. Bras. 45(10): 1222-1225.
- CAVALCANTE, P. B. 1991. Frutas comestíveis da Amazônia. CEJUP/Museu Paraense Emílio Goeldi, Belém. PA.
- CUNHA, A. C., SILVA, R. A., PEREIRA, J. D. B., AND SANTOS, R. S. 2011. Efeito da espessura da polpa, tamanho e peso de frutos de taperebá (*Spondias mombin* L.) sobre o parasitismo natural (Hymenoptera: Braconidae) em moscas-das-frutas (Diptera: Tephritidae). Rev. Agric. 86(1): 125-133.
- DEUS, E. G., SILVA, R. A., NASCIMENTO, D. B., MARINHO, C. F., AND ZUCCHI, R. A. 2009. Hospedeiros e parasitoides de espécies de *Anastrepha* (Diptera: Tephritidae) em dois municípios do Estado do Amapá. Rev. Agric. 84(3): 194-203.
- FIDALGO, O., AND BONONI, V. L. R. 1984. Técnicas de coleta, preservação e herborização de material botânico. Instituto de Botânica, São Paulo, SP.
- FORZZA, R. C., LEITMAN, P. M., COSTA, A. F., CARVALHO JR., A. A., PEIXOTO, A. L., WALTER, B. M. T., BICUDO, C., ZAPPI, D., COSTA, D. P., LLERAS, E., MARTINELLI, G.,

- LIMA, H. C., PRADO, J., STEHMANN, JR., BAUMGRATZ, J. F. A., PIRANI JR., SYLVESTRÉ, L., MAIA, L. C., LOHMANN, L. G., QUEIROZ, L. P., SILVEIRA, M., COELHO, M. N., MAMEDE, M. C., BASTOS, M. N. C., MORIM, M. P., BARBOSA, M. R., MENEZES, M., HOPKINS, M., AND SECCO, R. 2010. Introdução *In* Lista de Espécies da Flora do Brasil. Jardim Botânico do Rio de Janeiro. (Available at: <http://floradobrasil.jbrj.gov.br/2010/>. Accessed 25 May 2011).
- GODOY, M. J. S., PACHECO, W. S. P., PORTAL, R. R., PIRES FILHO, J. M., AND MORAES, L. M. M. 2011. Programa Nacional de Erradicação da Mosca-da-carambola, pp. 133-158 *In* R. A. Silva, W. P. Lemos and R. A. Zucchi [eds.], Moscas-das-frutas na Amazônia brasileira: diversidade, hospedeiros e inimigos naturais. Embrapa Amapá. Macapá.
- IBGE - INSTITUTO BRASILEIRO DE GEOGRAFIA E ESTATÍSTICA. 2011. (Available at: <http://www.ibge.gov.br/cidadesat/topwindow.htm?1>. Accessed 7 Aug 2011.)
- INSTITUTO DE PESQUISAS CIENTÍFICAS E TECNOLÓGICAS DO ESTADO DO AMAPÁ (IEPA). 2002. Macrodiagnóstico do Estado do Amapá: primeira aproximação do ZEE. IEPA, Macapá, AP.
- JESUS, C. R., OLIVEIRA, M. N., SOUZA FILHO, M. F., SILVA, R. A., AND ZUCCHI, R. A. 2008a. First record of *Anastrepha parishi* Stone (Diptera, Tephritidae) and its host in Brazil. *Rev. Bras. Entomol.* 52(1): 135-136.
- JESUS, C. R., PEREIRA, J. D. B., OLIVEIRA, M. N., SILVA, R. A., SOUZA FILHO, M. F., COSTA NETO, S. V., MARINHO, C. F., AND ZUCCHI, R. A. 2008b. New records of fruit flies (Diptera: Tephritidae), wild hosts and parasitoids (Hymenoptera: Braconidae) in the Brazilian Amazon. *Neotrop. Entomol.* 37(6): 733-734.
- JESUS, C. R., SILVA, R. A., SOUZA FILHO, M. F., DEUS, E. G., AND ZUCCHI, R. A. 2010. First record of *Anastrepha pseudanomala* Norrbom (Diptera: Tephritidae) and its host in Brazil. *Neotrop. Entomol.* 39(6): 1059-1060.
- LEONEL JR., L. F. 1991. Espécies de Braconidae parasitoides de moscas-das-frutas (Diptera: Tephritidae) no Brasil. M.Sc.Thesis, Escola Superior de Agricultura Luiz de Queiroz (ESALQ). Universidade de São Paulo. Piracicaba, São Paulo, Brazil. 83 pp.
- LEONEL JR., F. L.; ZUCCHI, R. A., AND WHARTON, R. A. 1995. Distribution and tephritid hosts (Diptera) of braconid parasitoids (Hymenoptera) in Brazil. *Int. J. Pest Manag.*, 41: 208-213.
- LEONEL JR., F. L., ZUCCHI, R. A., AND CANAL, N. A. D. 1996. Parasitismo de moscas-das-frutas (Diptera: Tephritidae) por Braconidae (Hymenoptera) em duas localidades do estado de São Paulo. *An. Soc. Entomol. Brasil* 25: 199-206.
- MALAVASI, A., ZUCCHI, R. A., AND SUGAYAMA, R. L. 2000. Biogeografia, pp. 93-98 *In* A. Malavasi and R. A. Zucchi [eds.], Moscas-das-frutas de importância econômica no Brasil: conhecimento básico e aplicado. Holos. Ribeirão Preto.
- NASCIMENTO, A. S., CARVALHO, R. S., AND MALAVASI, A. 2000. Monitoramento populacional, pp. 109-112 *In* A. Malavasi and R. A. Zucchi [eds.], Moscas-das-frutas de importância econômica no Brasil: conhecimento básico e aplicado. Holos. Ribeirão Preto.
- NORRBOM, A. L., ZUCCHI, R. A., AND HERNANDEZ-ORTIZ, V. 1999. Phylogeny of the genera *Anastrepha* and *Toxotrypana* (Trypetinae: Toxotripanini) based on morphology, pp. 299-342 *In* M. Aluja and A. L. Norrbom [eds.], Fruit Flies (Tephritidae): Phylogeny and Evolution of Behavior. CRC Press. Boca Raton. USA.
- OVRUSKI, S. M., ALUJA, M., SIVINSKI, J. AND WHARTON, R. A. 2000. Hymenopteran parasitoids on fruit-infesting Tephritidae (Diptera) in Latin America and the Southern United States: diversity, distribution, taxonomic status and their use in fruit fly biological control. *Integrated Pest Manag. Rev.* 5(2): 81-107.
- PEEL, M. C., FINLAYSON, B. L., AND MCMAHON, T. A. 2007. Updated world map of the Köppen-Geiger climate classification. *Hydrol. Earth Syst. Sci.* 11: 1633-1644.
- PORTO, J. 2007. Amapá: Principais transformações econômicas e institucionais—1943 a 2000. Author's edition. Macapá, AP.
- SSELIVON, D. 2000. Relações com as plantas hospedeiras, pp. 87-91 *In* A. Malavasi and R. A. Zucchi [eds.], Moscas-das-frutas de importância econômica no Brasil: conhecimento básico e aplicado. Holos. Ribeirão Preto.
- SILVA, J. G., DUTRA, V. S., SANTOS, M. S., SILVA, N. M. O., VIDAL, D. B., NINK, R. A., GUIMARÃES, J. A., AND ARAÚJO, E. L. 2010. Diversity of *Anastrepha* spp. (Diptera: Tephritidae) and associated braconid parasitoids from native and exotic hosts in Southeastern Bahia, Brazil. *Environ. Entomol.* 39(5): 1457-1465.
- SILVA, R. A., XAVIER, S. L. O., SOUZA FILHO, M. F., SILVA, W. R., NASCIMENTO, D. B., AND DEUS, E. G. 2007. Frutíferas hospedeiras e parasitoides (Hym., Braconidae) de *Anastrepha* spp. (Dip., Tephritidae) na Ilha de Santana, Estado do Amapá, Brasil. *Arq. Inst. Biol.* 74(2): 153-156.
- SILVA, R. A., SILVA, W. R., LIMA, C. R., COSTA NETO, S. V., SOUZA-FILHO, M. F., GUIMARÃES, J. A., AND ZUCCHI, R. A. 2009. Novo registro de hospedeiro de *Anastrepha bahiensis* Lima (Diptera: Tephritidae) no Brasil e parasitoide associado. *Biológico* 7(2):130.
- SILVA, R. A., DEUS, E. G., RAGA, A., PEREIRA, J. D. B., SOUZA-FILHO, M. F., AND COSTA NETO, S. V. 2011a. Monitoramento de moscas-das-frutas na Amazônia: amostragem de frutos e uso de armadilhas, pp. 35-47 *In* R. A. Silva, W. P. Lemos and R. A. Zucchi [eds.], Moscas-das-frutas na Amazônia brasileira: diversidade, hospedeiros e inimigos naturais. Embrapa Amapá. Macapá.
- SILVA, R. A., DEUS, E. G., PEREIRA, J. D. B., JESUS, C. R., SOUZA-FILHO, M. F., AND ZUCCHI, R. A. 2011b. Conhecimento sobre moscas-das-frutas no estado do Amapá, pp. 225-236 *In* R. A. Silva, W. P. Lemos and R. A. Zucchi [eds.], Moscas-das-frutas na Amazônia brasileira: diversidade, hospedeiros e inimigos naturais. Embrapa Amapá. Macapá.
- SIVINSKI, J., ALUJA, M., AND LOPEZ, M. 1997. Spatial and temporal distributions of parasitoids of Mexican *Anastrepha* species (Diptera: Tephritidae) within the canopies of fruit trees. *Ann. Entomol. Soc. Am.* 90(5): 604-618.
- TRINDADE, R. B. R., AND UCHÔA, M. A. 2011. Species of fruit flies (Diptera: Tephritidae) in a transect of the amazonian rainforest in Oiapoque, Amapá, Brazil. *Zoologia* 28(5): 653-657.
- URAMOTO, K., MARTINS, D. S., AND ZUCCHI, R. A. 2008. Fruit flies (Diptera, Tephritidae) and their associations with native host plants in a remnant area of the highly endangered Atlantic Rain Forest in the State of Espírito Santo, Brazil. *Bull. Entomol. Res.* 98: 457-466.
- WEEMS JR, H. V., AND FASULO, T. R. 2009. Guava fruit fly, *Anastrepha striata* Schiner (Insecta: Diptera: Tephritidae). Available at: <http://edis.ifas.ufl.edu/pdf/IN/IN54400.pdf>. [revision date: 2009].

- ZUCCHI, R. A. 2000. Taxonomia, pp. 13-24 *In* A. Malvasi and R. A. Zucchi [eds.], *Moscas-das-frutas de importância econômica no Brasil: conhecimento básico e aplicado*. Holos. Ribeirão Preto.
- ZUCCHI, R. A. 2007. Diversidad, distribución y hospederos del género *Anastrepha* en Brasil, pp. 77-100 *In* V. Hernández-Ortiz [ed.], *Moscas de la fruta en Latinoamérica (Diptera: Tephritidae): diversidad, biología y manejo*. S y G editores: Mexico City, Mexico.
- ZUCCHI, R. A. 2008. Fruit flies in Brazil - *Anastrepha* species and their hosts plants. Available at: www.lea.esalq.usp.br/anastrepha/. [revision date: 05/04/2011].
- ZUCCHI, R. A., SILVA, R. A., AND DEUS, E. G. 2011. Espécies de *Anastrepha* e seus hospedeiros na Amazônia brasileira, pp. 53-70 *In* R. A. Silva, W. P. Lemos and R. A. Zucchi [eds.], *Moscas-das-frutas na Amazônia brasileira: diversidade, hospedeiros e inimigos naturais*. Embrapa Amapá. Macapá.