



## **Potential Planthopper Vectors of Palm Phytoplasmas in Florida with a Description of a New Species of the Genus *Omolicna* (Hemiptera: Fulgoroidea)**

Authors: Halbert, Susan E., Wilson, Stephen W., Bextine, Blake, and Youngblood, Susan B.

Source: Florida Entomologist, 97(1) : 90-97

Published By: Florida Entomological Society

URL: <https://doi.org/10.1653/024.097.0112>

---

BioOne Complete ([complete.bioone.org](https://complete.bioone.org)) is a full-text database of 200 subscribed and open-access titles in the biological, ecological, and environmental sciences published by nonprofit societies, associations, museums, institutions, and presses.

Your use of this PDF, the BioOne Complete website, and all posted and associated content indicates your acceptance of BioOne's Terms of Use, available at [www.bioone.org/terms-of-use](https://www.bioone.org/terms-of-use).

Usage of BioOne Complete content is strictly limited to personal, educational, and non - commercial use. Commercial inquiries or rights and permissions requests should be directed to the individual publisher as copyright holder.

---

BioOne sees sustainable scholarly publishing as an inherently collaborative enterprise connecting authors, nonprofit publishers, academic institutions, research libraries, and research funders in the common goal of maximizing access to critical research.

## POTENTIAL PLANTHOPPER VECTORS OF PALM PHYTOPLASMAS IN FLORIDA WITH A DESCRIPTION OF A NEW SPECIES OF THE GENUS *OMOLICNA* (HEMIPTERA: FULGOROIDEA)

SUSAN E. HALBERT<sup>1,\*</sup>, STEPHEN W. WILSON<sup>2</sup>, BLAKE BEXTINE<sup>3</sup> AND SUSAN B. YOUNGBLOOD<sup>4</sup>

<sup>1</sup>Florida Department of Agriculture and Consumer Services, Division of Plant Industry, P.O. Box 147100, Gainesville, FL 32614-7100, USA

<sup>2</sup>Department of Biology and Agriculture, University of Central Missouri, Warrensburg, MO 64093, USA

<sup>3</sup>University of Texas at Tyler, 3900 University Blvd, Tyler, TX 75799, USA

<sup>4</sup>Florida Department of Agriculture and Consumer Services, Division of Plant Industry, 4618 E. State Rd 64, Bradenton, FL 34208, USA

\*Corresponding author; E-mail: Susan.Halbert@FreshFromFlorida.com

Supplementary material for this article in Florida Entomologist 97(1) (2014) is online at <http://purl.fcla.edu/fcla/entomologist/browse>

### ABSTRACT

Planthoppers (Hemiptera: Fulgoroidea) have been implicated in transmission of phytoplasmas that cause lethal decline in palms. Surveys of insects feeding on palms located in Florida resulted in the discovery of *Omolicna joi* **sp. nov.**, described here. *Patara albida* (Hemiptera: Derbidae), a palm feeder, has become established in South Florida. *Haplaxius crudus* (Hemiptera: Cixiidae), the proven vector of the phytoplasma that causes lethal yellows (LY), was thought to be restricted to the southern tier of Florida counties, thus limiting the distribution of LY. We found that *H. crudus* can overwinter consistently as far north as Gainesville (N 29.63380° W -82.37200°). Thus, the northern limit of LY might be a function of the physiology of the pathogens rather than the distribution of the vector.

Key Words: Fulgoroidea, palm, planthopper, phytoplasma, Derbidae, Cixiidae

### RESUMEN

Salta plantas (Hemiptera: Fulgoroidea) han sido implicados en la transmisión de fitoplasmas que causan deterioro letal en palmas. Un muestreo de campo sobre insectos que se alimentan de las palmas en Florida resultó en el descubrimiento de una especie nueva, *Omolicna joi* **sp. nov.**, que se describe aquí. *Patara albida* (Hemiptera: Derbidae) se ha establecido en el sur de la Florida. Se pensaba que *Haplaxius crudus* (Hemiptera: Cixiidae), el vector del amarillamiento letal del cocotero (ALC), estaba restringido a los condados más sureños de Florida, limitando la distribución de ALC. Descubrimos que *H. crudus* pueden invernar tan al norte como Gainesville (N 29.63380° W -82.37200°). Por lo tanto, el límite norte de ALC podría estar basado en la fisiología del patógeno en lugar de en la distribución del vector.

Palabras Clave: Fulgoroidea, palma, salta plantas, fitoplasma

Palms (Arecaceae) serve as hosts for numerous species of phytophagous insects (Howard et al. 2001). Planthopper (Hemiptera: Fulgoroidea) species from 10 families have been reported from palms in the United States and the Caribbean (Wilson & O'Brien 1987, Wilson et al. 1994). Several of these families include vectors of plant viruses and phytoplasmas, some of which are pathogens of palms (Wilson 2005).

Lethal Yellowing (LY) disease of palms is caused by '*Candidatus Phytoplasma palmae*' (16SrIV-A) (Harrison et al. 2008) and transmit-

ed by the cixiid planthopper *Haplaxius crudus* (Van Duzee), formerly *Myndus crudus* (Howard et al. 1983). An undescribed species of *Cedusa* (Derbidae) has been implicated in transmission of a recently described palm phytoplasma in Jamaica (Brown et al. 2006), but no actual transmission test was done.

Texas Phoenix Palm Decline (TPPD) is caused by a 16SrIV-D phytoplasma strain (Harrison et al. 2008) and was first recorded in Florida in 2006 (Halbert 2008; Harrison et al. 2008). Palms with TPPD have occurred further north than LY

had been recorded in Florida. Moreover, the host range included *Syagrus romanzoffiana* (Cham.) Glassman (Harrison et al. 2008), *Phoenix roebelenii* O'Brien (Jeyaprakesh et al. 2011), and *Sabal palmetto* (Walter) Schult. & Schult. (Harrison & Elliot 2008; Harrison et al. 2009), none of which are susceptible to the Florida strains of LY. Thus, there was a possibility that the insect vector for TPPD might not be *H. crudus*. Determination of vectors of palm phytoplasmas is difficult, because of the logistical problems with caging mature palms securely for the duration of the incubation period of the disease (Howard et al. 1983). *Haplaxius crudus* is the only planthopper proven to transmit a palm phytoplasma using mature palm indicator plants (Howard et al. 1983).

The vector of TPPD may not be *H. crudus* because the host range and the geographical range differ from those of LY. In order to determine which species of Auchenorrhyncha might be vectors of TPPD, we searched palms in the Tampa Bay area of Florida where the disease is most severe. We also examined palms in other parts of the state in the course of our work. This paper reports those findings.

#### MATERIALS AND METHODS

We made numerous trips to the Tampa Bay area at various times of the year, beginning in 2008, to examine palms, particularly *S. palmetto*, which succumbs to TPPD. Surveys were conducted at least 3 times each year beginning in 2009. Survey times were spaced throughout the year but were targeted based on abundance of species of interest. We also regularly surveyed *S. palmetto* in the landscape of the Florida Department of Agriculture and Consumer Services, Division of Plant Industry (DPI) facility in Gainesville. In our travels around Florida, we inspected palms whenever the opportunity arose. Surveys were done by visual inspection of the leaves of the palms. Palm planthoppers are found most often on the undersides of the leaves, but sometimes they are also on the upper surface. Planthoppers were collected either by hand, or by using a manual aspirator (1135A, BioQuip <http://www.bioquip.com/search/DispProduct.asp?pid=1135A>) or a D-cell aspirator (2809D BioQuip <http://www.bioquip.com/search/DispInfo.asp?itemnum=2809D>), which was effective because it allowed few insects to escape. Specimens were identified by Susan Halbert at the Florida State Collection of Arthropods (FSCA), Gainesville, Florida. Literature detailed below, as well as reference specimens in the FSCA and the S. W. Wilson Planthopper Collection, Department of Biology and Agriculture, University of Central Missouri, Warrensburg, were used to identify the planthoppers found in the surveys. Genitalia preparations were made by cooking (not boiling) the relevant segments in 10% potas-

sium hydroxide until the soft tissue was translucent, rinsing in water, and preserving in glycerin.

The literature on derbid planthoppers is widely scattered. Keys for identification of derbid genera that occur in the USA that include *Omolocna* (or as *Cenchrea* or *Syntames*) are found in Dozier (1928), Metcalf (1923, 1938), Fennah (1952), Wilson & McPherson (1980), and Bartlett et al. (in press). Keys to some of the species are in McAtee (1924) and Metcalf (1938). Species descriptions, some with accompanying illustrations of genitalia, are found in the publications noted above as well as in Van Duzee (1909), Ball (1902), Caldwell (1944), Fennah (1945), Caldwell & Martorell (1951), Fennah (1971), and Rodriguez-Leon & Hidalgo-Gato (2005).

Type specimens of *Omolocna* **sp. nov.** and voucher specimens of the other planthoppers collected during this study are deposited in the FSCA with the exception of those indicated by \* (1 specimen from localities with multiple specimens), which are deposited in the S. W. Wilson Planthopper Collection, Department of Biology and Agriculture, University of Central Missouri, Warrensburg.

#### DNA Extraction and CO1 Partial Gene Sequencing.

Representative samples from the 3 common planthoppers [*Omolocna* *sp.*, *Ormenaria rufifascia* (Walker), and *H. crudus*] collected from Florida palms were prepared for CO1 gene sequencing for molecular taxonomic indexing. At least 3 insects per species were used to produce the consensus sequences. The samples were placed in 95% ethanol and stored at -20 °C until processed. Individual planthopper nucleic acid extractions were done using the CTAB (cetyltriethylammonium bromide) buffer method (Zhang et al. 1998). Polymerase chain reaction was performed using modified primers from multiple publications (LEPF1: 5'-ATTCAACCAATCATAAAGAT-3' and LEPR1: 5'-TAAACTTCTGGATGTCCAAAAAATCA) (Hebert et al. 2004; Park et al. 2011). The resulting amplicons were sequenced by capillary electrophoresis sequencing (Yale University sequencing facility, New Haven, Connecticut). The resulting sequences were trimmed and aligned to reference sequences using mega Blast at NCBI. Sequences also were compared in the Barcode of Life Database (<http://www.boldsystems.org/>) to confirm phylogenetic placement within the planthopper superfamily Fulgoroidea.

#### RESULTS

Three species of planthoppers were found to be abundant on the palms in the Tampa Bay area, where TPPD is common, and also in Gainesville. These include a flatid, *O. rufifascia*, a cixiid, *H.*

*crudus*, formerly *Myndus crudus*, and a derbid, *Omolicna* sp. Leafhoppers (Cicadellidae) were not found associated with the palms. One species of membracid, *Idioderma virescens* Van Duzee, was found several times; however, to our knowledge, treehoppers have never been implicated as phytoplasma vectors (Weintraub & Wilson 2010).

One of the most abundant species on *S. palmetto* in the Tampa Bay area was a species of *Omolicna*. Four of the 20 species of *Omolicna* are reported in the United States: *O. fulva* (Van Duzee), *O. mcateei* (Dozier), *O. texana* (Caldwell), and *O. uhleri* (Ball) (O'Brien 1982; Rodriguez-Leon and Hidalgo-Gato 2005; Bartlett et al. 2014 in press). The specimens we collected originally were assumed to be *O. fulva*, which was described from Estero, Florida; however, comparison of male specimens with detailed photographs of the holotype of *O. fulva* taken by Dr. Norman Penny, California Academy of Sciences, revealed that our specimens represent an undescribed species.

#### OMOLICNA, FENNAH 1945

##### Type Species

*Omolicna proxima* Fennah, 1945:440

##### Diagnosis

The members of this genus can be separated from similar cenchreine derbids by the relatively broad vertex with pit-like sensoria bordering the lateral margins; frons wider than long with the lateral margins diverging ventrally and without a longitudinal median carina; a scroll-like extension of the lateral aspect of the pronotum which partially surrounds and subtends the base of the antennae; male pygofer with a median ventral process, aedeagus with terminal flagellum folded anterodorsally, asymmetrical arrangement of spines.

**OMOLICNA JOI SP. NOV. WILSON,  
HALBERT & BEXTINE (FIGS. 1 AND 2)**

##### Type Locality

USA: Florida: Manatee Co., Parrish.

##### Diagnosis

Male pygofer with median ventral process broadly rounded apically with small lateral tooth on each side; segment 10 (= "anal tube") with a notch apically on caudal aspect; aedeagus with flagellum bearing 4 elongate anteroventrally-directed spines on dorsal aspect and 2 shorter anterodorsally-directed curved spines on ventral aspect (Fig. 2, A-C).

##### Description

**Color.** Bright yellow-stramineous to light brown; carinae of head darker; mesonotum slightly darker; forewings slightly darker toward apex, with costal cell at apex red. In life, orange-brown, dusted with purple wax (Fig. 1).

**Structure.** Body length males: 3.6 - 4.2 mm ( $n = 10$ ); females: 4.2 - 4.8 mm ( $n = 3$ ).

Vertex as broad as compound eye on posterior border, narrowing apically; with slightly elevated lateral carinae, depressed in middle, with 2 rows of sensorial pits bordering each lateral carina; transverse apical carina separating vertex from frons. Frons with lateral carinae diverging ventrally and with a row of sensorial pits next to each carina. Clypeus with partial longitudinal carina. Pronotum short, with lateral aspect forming a scroll-like extension almost surrounding base of antenna. Mesonotum with 3 longitudinal carinae and subtriangular apex. Forewing with a row of sensory pits along base of Sc+R and R for approximately half the length of the wing; 1A (lateral aspect of "y-vein of clavus") with a row of sensory pits proximally.

**Genitalia.** (Fig. 2, A-F). Pygofer, in lateral view, narrow, broader ventrally; with parallel-sided median ventral process, slightly convex apically with small lateral tooth on each side. Segment 10 (= "anal tube"), in lateral view, with rounded extension on ventral aspect; in caudal view, notched apically. Parameres narrow at base, broadening to spatulate apex; with subtriangular process near base on inner margin, process with teeth on anterior aspect; small lobe near middle on outer margin. Aedeagus, in left lateral view, with 2 anteriorly-directed spines on



Fig. 1. Adult *Omolicna joi*, **sp. nov.** on *Sabal palmetto* in Gainesville, Florida. Photography credit: Lyle Buss, University of Florida. This image in color is shown online as Suppl. Fig. 1 in supplementary material in Florida Entomologist 97(1) (2014) online at <http://purl.fcla.edu/fcla/entomologist/browse>.



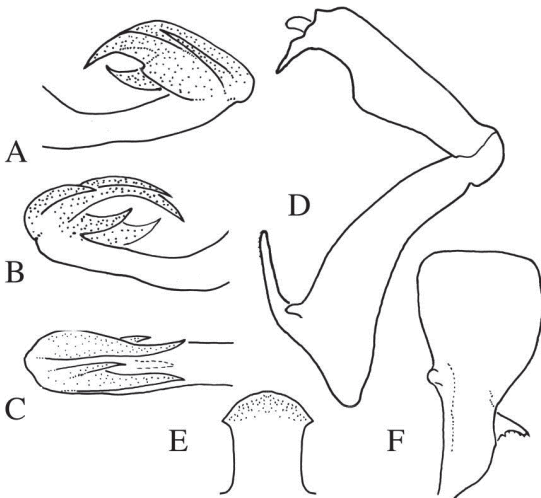


Fig. 2. Genitalic features of *Omolicna joi*, **sp. nov.** A. Aedeagus, left lateral view, B. Aedeagus, right lateral view, C. Aedeagus, dorsal view (semi-diagrammatic), D. Pygofer and anal segments, right lateral view, E. Pygofer median process, caudal view, F. Right paramere, caudal view. Scale bar = 0.5 mm. Drawing: Stephen W. Wilson.

dorsal aspect, inner spine slender with acute apex, about half length of flagellum, outer spine broad, curved anteroventrally with acute apex and small tooth on ventral aspect; flagellum with 4 spines, 1 short, broad, curved anterodorsal spine originating from ventral aspect of flagellum; in right lateral view, 2 anteriorly-directed spines on dorsal aspect, inner spine elongate, slender with acute apex, outer spine slender, curved anteroventrally with acute apex, about one-third length of flagellum; with 1 short, broad, curved anterodorsal spine originating from ventral aspect of flagellum.

#### Remarks

*Omolicna joi* differs from *O. fulva* in color with a dark purple cast to the forewings (in life, stramineous when fixed in alcohol) versus a "pinkish color" (Van Duzee 1909); shallow versus strong elevation of the vertex, smaller (3.6–4.8 vs. 5.0–6.5 mm), and a broadly rounded pygofer median process versus a subtriangular process. It differs from *O. mcateei* and *O. uhleri* in the shape of the pygofer median process and the shapes and sizes of the aedeagal spines (compare Fig. 2, A-C with Plate II, Fig. 1, A-C, and Fig. 2 A-C in Caldwell (1944)).

#### Host Plants

*Sabal palmetto* and *Serenoa repens* (W. Bartram).

#### Distribution

USA: Florida (Fig. 3).

#### Etymology

The specific epithet should be considered a random combination of letters which ought to elicit the response "*O. joi*" by economic entomologists and plant pathologists when encountering these insects on diseased host plants.

#### Material Examined

**HOLOTYPE:** male. "Florida, Manatee Co. / Parrish, N 27.58093 W -82.42308 / ex *Sabal palmetto* / S. Halbert coll. 12-VIII-2008 / FSCA#E2008-5364".

**FLORIDA:** Alachua Co., Austin Cary Forest, 22-X-1976, G. B. Fairchild & H. V. Weems, Jr., Malaise #2/CO2 (2 males\*); Escambia Co., Pensacola, 9-X-1997, coll. R. Hill, E 1997-003900 (1 female); Gadsden Co., Midway, 30-VII-1986, R. Hill, Blacklight, FSCA#E1986-2918 (1 male, PARATYPE); Highlands Co., Highlands Hammock St. Pk., 24-VI-1965, C. W. O'Brien coll. (1 female); Holmes Co., 11-VII-1954, F. W. Mead coll. (1 male); Jackson Co., F. W. Mead, Sta. 253, 3-VIII-1954 (1 female); Palm Beach Co., Wellington, Tamis Tr, Jackson trap, 4-XII-2006, T. Foss coll., FSCA#E2006-9045 (1 male, PARATYPE); Pinellas Co., Pinellas Park, Fay Forest Area, 19-VII-1989, David Moorey, sweep net, FSCA#1989-689 (1 male, PARATYPE); Santa Rosa Co., F. W. Mead, Sta. 149, 13-VIII-1955, F. W. Mead coll. (3 males\*); Sarasota Co., Sarasota, 3-XII-1987, K. E. Jenkins, sweeping *Osmunda cirrh.* + *Blechnum* under *Pinus elliottii*, FSCA#E1987-4768 (1 male, PARATYPE); Seminole Co., Sanford, 29-X-1926, E. D. Ball (3 males\*, 1 female).

#### Sequence Information

A 1566 bp sequence was generated from *Omolicna joi*. Analysis of both BLAST and BOLD confirmed that the consensus sequence (KF472312) generated from this insect was in the superfamily Fulgoroidea; however, no significant match could be made below this taxonomic level.

#### Species of *Omolicna* in Florida

Three of the 6 United States species of *Omolicna* have been recorded from Florida: *O. fulva*, *O. joi*, and *O. mcateei*. *Omolicna fulva* is known from 1 male specimen collected in 1909 by Van Duzee from Estero in southern Florida. As it has not been collected since its initial discovery, it may represent a Caribbean species that did not become established in Florida. *Omolicna mcateei* was described by Dozier (1928) from Mississippi and has been recorded from North Carolina, Tennessee, and Georgia; however, the type specimen apparently has been lost, and identification must

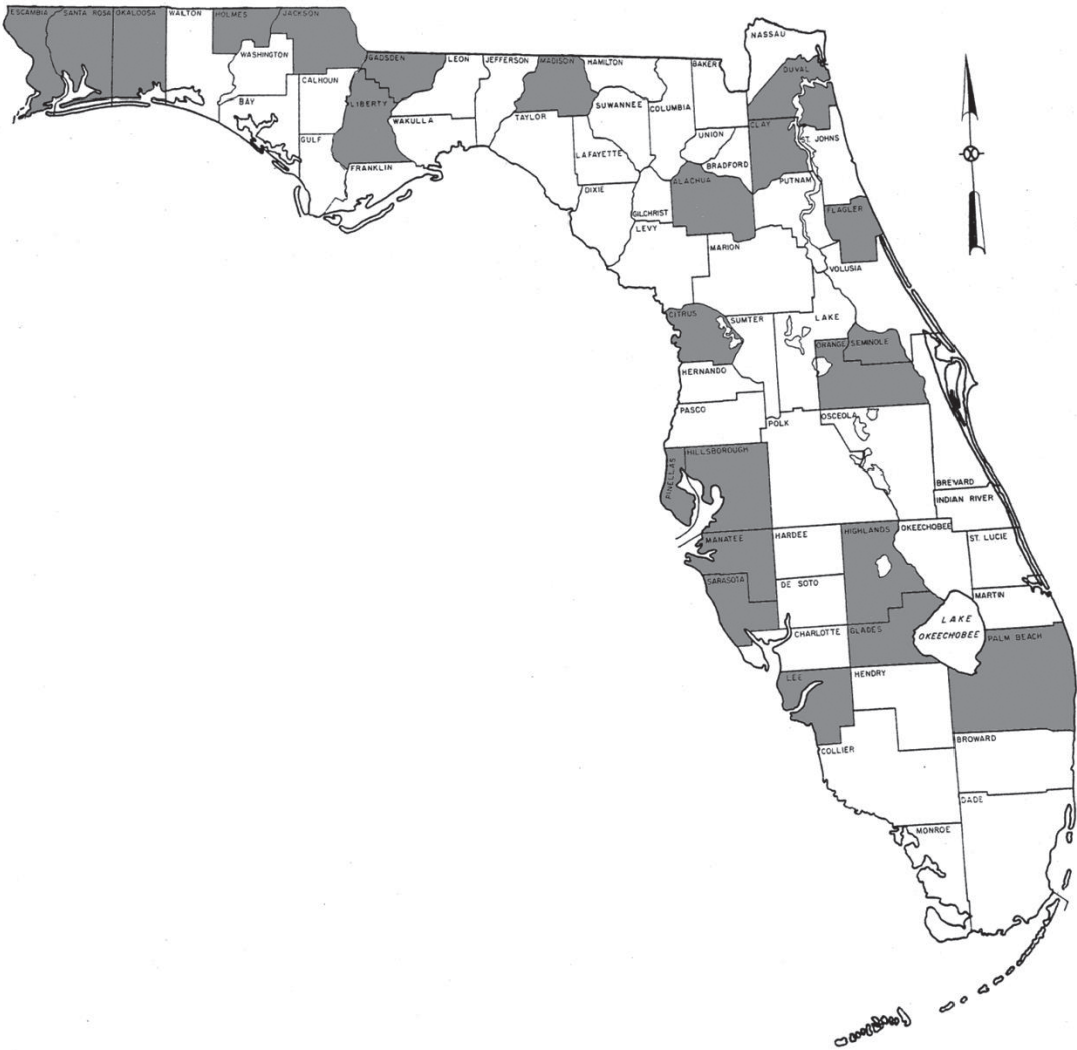


Fig. 3. Florida county records for *Omolicna joi*, **sp. nov.**

be based solely on published descriptions and illustrations. *Omolicna uhleri* is an easily recognized species that has been recorded from Ontario,

Canada, and from New York south to Georgia and west to Kansas; it is included in the following key because it might occur in northern Florida.

KEY TO THE SPECIES OF *OMOLICNA* OF POSSIBLE OCCURRENCE IN FLORIDA

- 1. Forewing with dark brown stripe paralleling costal margin, costa pale; male pygofer median process spatulate, parameres with serrate subtriangular process on inner margin; aedeagus with anteroventrally-directed curved spine originating from apex on right side (see Caldwell 1944, Fig. 1) . . . . . *O. uhleri* (Ball)
- 1'. Forewing without dark brown stripe paralleling costal margin; costa concolorous . . . . . 2
- 2. Vertex not strongly elevated; male pygofer median process broadly rounded with a small tooth on each side (Fig. 2E), parameres with serrate subtriangular process on inner margin (Fig. 2F); aedeagus with anterodorsally-directed broad spine and a parallel slender spine originating from apex on left side (Fig 2A) . . . . . *O. joi*, **sp. nov.**

- 2. Vertex strongly elevated; male pygofer median process with strong lateral tooth and small basal tooth on each side (see Caldwell 1944, Fig. 2) or subtriangular . . . . . 3
- 3. Body pink; larger, 6.5 mm; male pygofer median process subtriangular . . . . . *O. fulva* (Van Duzee)
- 3'. Body fulvous; smaller, 3.5-4.0 mm; male pygofer median process with strong lateral tooth and small basal tooth on each side . . . . . *O. mcateeii* (Dozier)

Other Palm Planthoppers Discovered in the Surveys

*Cedusa inflata* (Ball) is common and has been reported on palms in South Florida, (Howard *et al.* 2001). Specimens have been submitted for identification at DPI in every month of the year except Nov and Dec since 2006.

*Patara albida* Caldwell *nec* Westwood, a derbid species discovered in Florida in 2005, was found on *S. romanzoffiana* by DPI Plant Inspector Stephen P. Beidler in Miami-Dade County in 2010 (E2010-6159). Another population was found by S. Halbert and Amy Rhoda in 2011 on *Washingtonia robusta* H. Wendl. at a nursery in Miami-Dade County (FSCA# E2011-8050). Specimens also were found on banana (*Musa* sp.) by DPI Plant Inspector Edward Putland in Miami-Dade County on 2-VII-2007. We have collections of this species in the Miami-Dade County suction trap (8 m tall) in Jan, Jul, Oct, and Dec of 2011-2012, suggesting that it is well established in Florida.

Seasonality Information, Gainesville Palm Planthoppers, and New Distribution Information for *Haplaxius crudus*

The 3 planthopper species exhibited a distinct seasonality (Fig. 4). *Haplaxius crudus* is heterovoltine, with the number of generations affected by temperature. It has been reported to overwinter as subterranean nymphs (Tsai & Kirsch 1978; Wilson & Tsai 1982). However, in Gainesville, adults could be found on *S. palmetto* throughout the winter, and in the Tampa Bay area, we found relatively high numbers in Dec and Feb. We did not visit the Tampa Bay area sites in Jan. *Ormenaria rufifascia* is univoltine (Wilson & McPherson 1981, Wilson & Tsai 1984). Wilson & Tsai (1984) suspected that eggs are laid on the leaves in the summer and hatch in Jan. This is consistent with our observations. In Gainesville, we observed cold-tolerant nymphs on *S. palmetto* during most of the winter after Jan.

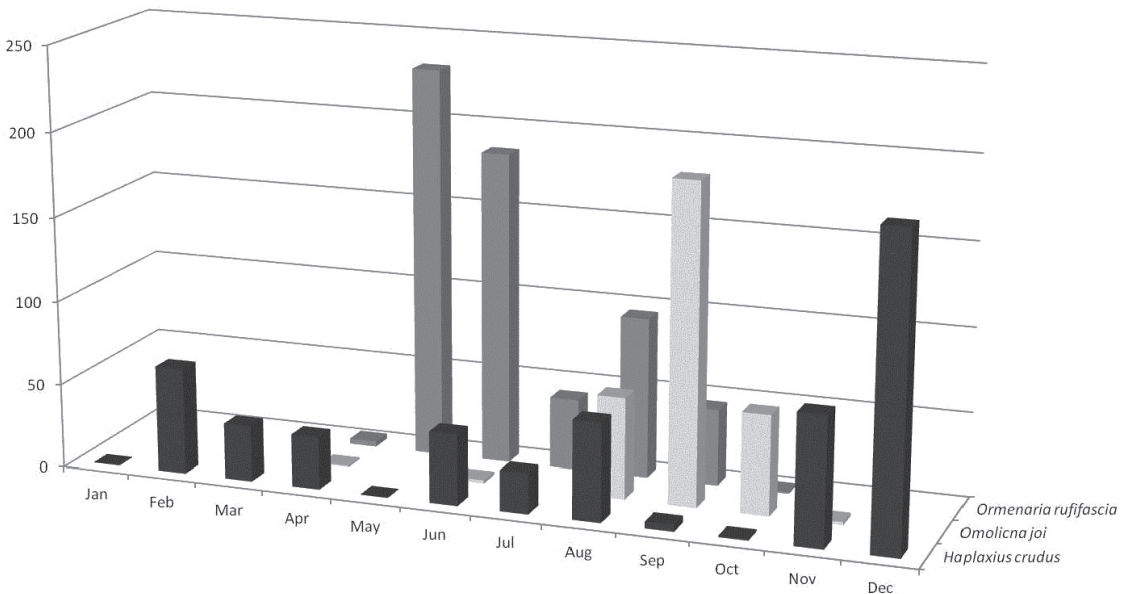


Fig. 4. Phenologies of the adults of *Haplaxius crudus* (n = 515), *Omolicna joi*, sp. nov. (n = 313), and *Ormenaria rufifascia* (n = 602) found on palms in central and northern Florida. Data represent collections from May 2008-Apr 2013.

All 3 of the common planthoppers found in the Tampa Bay area also were abundant in Gainesville, which is in the northern part of the Florida peninsula (N 29.63380° W -82.37200°). *Haplaxius crudus* overwintered in Gainesville at the Florida Department of Agriculture and Consumer Services, Division of Plant Industry (DPI) compound in each of the past 5 winters. The first 3 of those winters had below-average Jan temperatures (Weather Source 2013). *Haplaxius crudus* could be found throughout the winters at DPI, especially on palms that were located in a maintained landscape, which featured St. Augustine grass, a known host of the nymphs (Howard 1983). *Omolicna joi* was found primarily in the fall, on *Sabal palmetto* plants in the non-maintained parts of the landscape. *Ormenaria rufifascia* was found primarily in the spring on *Sabal palmetto* in both maintained and non-maintained parts of the landscape.

#### Sequence Information for Other Planthoppers

A 1566 bp sequence was returned for the *H. crudus* consensus sequence (KF472314). While there was not a CO1 sequence in BLAST that matched this entire region; a portion of this sequence was a 100% match to multiple 563 bp *H. crudus* sequences found in BLAST (EU183616.1 and EU183606.1). A 1566 bp sequence was generated from *Ormenaria rufifascia*. Analysis of both BLAST and BOLD confirmed that the consensus sequence (KF472313) generated from this insect was in the superfamily Fulgoroidea; however, no significant match could be made below this taxonomic level.

#### DISCUSSION

Harrison et al. (2008) indicated that LY does not spread in Florida beyond the "southern subtropical tier of counties." This is attributed to the distribution of the vector, *H. crudus*. In fact, *H. crudus* was found to overwinter in Gainesville, even in cold years, suggesting that the distribution of LY could be due to temperature restrictions for the pathogen or density of susceptible hosts, rather than the distribution of the insect vector.

Derbids are not suspected commonly to be vectors of plant pathogens. However, a derbid, *Cedusa* sp., is suspected to be the vector of a palm phytoplasma in Jamaica (Brown et al. 2006). Two other derbids, *Diostrombus mkurangai* M.R. Wilson, and *Proutista moesta* (Westwood) are implicated in transmission of palm pathogens in Africa and India, respectively (Howard et al. 2001). The Jamaican *Cedusa* sp. and *P. moesta* both tested positive for the pathogens, but in the case of *D. mkurangai*, the planthopper was simply the most abundant potential vector (Howard et al. 2001).

To our knowledge no actual transmission tests have been done.

*Omolicna joi* has been found throughout most of Florida (Fig. 3.); however, there is no record from the southern tier of counties where LY is active. Most of the specimens with host data came from *Sabal palmetto*, but there is also one record from *Serenoa repens* (Bartr.) Small (Citrus County, Inverness, 31-VIII-2011, Thomson Paris, hand collection, FSCA# E2011-6243).

Sequencing of the planthopper CO1 gene proved to be a challenge. Specialized primers were designed to cover the needed region adequately. The primers LEPF1 and LEPR1 worked well for all 3 species and provided good coverage. Matching the resulting sequences to established databases also was challenging. With little attention having been given to sequencing genes from insects in this superfamily, few sequences were available from which to draw comparisons. As such, we have submitted our sequences as a contribution to an ever-growing database of molecular information.

#### ACKNOWLEDGMENTS

We thank James 'Eddie' Anderson, Lea Etchells, Thomson Paris and Kurt Ahlmark for help with field collecting; Dyrana Russell-Hughes, Thomson Paris, Kurt Ahlmark and Anthony Dickens for laboratory assistance; and Charlotte Campana for data processing. We are grateful to Norman Penny, California Academy of Sciences, San Francisco, California, for providing detailed photographs of the holotype of *Omolicna fulva* and Lyle Buss, University of Florida, for the photograph of a living *Omolicna joi*. We also thank Lauren Lambeth, Mikayla Adkinson, Adam Booth and Daymon Hail, University of Texas at Tyler, for their contributions to the processing of the molecular data. We appreciate the helpful comments on planthopper taxonomy by Lois O'Brien, Green Valley, Arizona. Partial funding came from Cooperative Agreement number 12-8130-0202 CA, a Farm Bill 10201 project titled "Texas Phoenix Palm Decline." Other funding came from the USDA ARS National Clonal Germplasm Repository for Citrus and Dates. We also thank Dr. Nigel Harrison's laboratory at the Fort Lauderdale Research and Extension Center, University of Florida, for 2 D-cell aspirators. We thank G. B. Edwards, Gary Steck, FDACS/DPI, and two anonymous reviewers for review of the manuscript. We thank Erick Rodriguez and Julieta Brambila for help with the Spanish abstract. This is Entomology Contribution No. 1244, FDACS/DPI, Bureau of Entomology, Nematology, and Plant Pathology.

#### REFERENCES CITED

- BALL, E. D. 1902. New genera and species of North American Fulgoridae. Canadian Entomol. 34: 259-266.
- BARTLETT, C. R., O'BRIEN, L. B., AND WILSON, S. W. 2014. A review of the planthoppers (Hemiptera: Fulgoroidea) of the United States. Mem. American Entomol. Soc. (in press).
- BROWN, S. E., BEEN, B. O., AND MCLAUGHLIN, W. A. 2006. Detection and variability of the lethal yellowing group



- (16Sr IV) phytoplasmas in the *Cedusa* sp. (Hemiptera: Auchenorrhyncha: Derbidae) in Jamaica. *Ann. Appl. Biol.* 149: 53-62.
- CALDWELL, J. S. 1944. The tribe Cenchreini with special references to the *Cenchrea* complex (Homoptera: Derbidae). *Bull. Brooklyn Entomol. Soc.* 39: 99-110.
- CALDWELL, J. S., AND MARTORELL, L. F. 1951 [dated 1950]. Review of the Auchenorynchous [*sic*] Homoptera of Puerto Rico. Part II. The Fulgoroidea except Kinnariidae. *J. Agric. Univ. Puerto Rico* 34(2): 133-269.
- DOZIER, H. L. 1928. The Fulgoridae or planthoppers of Mississippi, including those of possible occurrence. A taxonomic, biological, ecological, and economic study. *Tech. Bull. Mississippi Agric. Exp. Stn.* 14:1-152.
- FENNAH, R. G. 1945. The Fulgoroidea, or lanternflies, of Trinidad and adjacent parts of South America. *Proc. United States Natl. Mus.* 95(3184): 411-520.
- FENNAH, R. G. 1952. On the generic classification of Derbidae (Homoptera: Fulgoroidea) with descriptions of new Neotropical species. *Trans. R. Entomol. Soc. London* 103(4): 109-170.
- FENNAH, R. G. 1971. Fulgoroidea from the Cayman Islands and adjacent areas. *J. Nat. Hist.* 5: 299-342.
- HALBERT, S. E. 2008. Pest Alert: Texas Phoenix Palm Decline. <http://www.freshfromflorida.com/Divisions-Offices/Plant-Industry/Pests-Diseases/Texas-Phoenix-Palm-Decline> (Accessed 2 December 2013)
- HARRISON, N. A., AND ELLIOTT, M. L. 2008. A Lethal Phytoplasma Disease of *Sabal palmetto* on Florida's Central West Coast. University of Florida. [http://ffrec.ifas.ufl.edu/palm\\_prod/pdfs/Sabal-palmetto-Infected-with-Phytoplasma-in-Florida.pdf](http://ffrec.ifas.ufl.edu/palm_prod/pdfs/Sabal-palmetto-Infected-with-Phytoplasma-in-Florida.pdf) (Accessed 2 December 2013)
- HARRISON, N. A., HELMICK, E. E., AND ELLIOT, M. L. 2009. First report of a phytoplasma-associated lethal decline for *Sabal palmetto* in Florida, USA. *Plant Pathol.* 58: 792.
- HARRISON, N. A., HELMICK, E. E., AND ELLIOTT, M. L. 2008. Lethal yellowing-type diseases of palms associated with phytoplasmas newly identified in Florida, USA. *Ann. Appl. Biol.* 153: 85-94.
- HEBERT, P. D. N., PENTON, E. H., BURNS, J. M., JANZEN, D. H., AND HALLWACHS, W. 2004. Ten species in one: DNA barcoding reveals cryptic species in the Neotropical skipper butterfly *Astraptus fulgerator*. *Proc. Natl. Acad. Sci. USA* 101: 14812-14817.
- HOWARD, F. W., MOORE, D., GIBLIN-DAVIS, R. M. AND ABAD, R. G. 2001. *Insects on Palms*. CABI, New York. 400 pp.
- HOWARD, F. W., NORRIS, R. C., AND THOMAS, D. L. 1983. Evidence of transmission of palm lethal yellowing agent by a planthopper, *Myndus crudus* (Homoptera: Cixiidae). *Trop. Agric. (Trinidad)* 60: 168-171.
- JEYAPRAKASH, A., SUTTON, B. D., HALBERT, S. E., AND SCHUBERT, T. S. 2011. High-fidelity PCR facilitates detection and identification of a Texas Phoenix palm phytoplasma strain from pigmy date palm, *Phoenix roebelenii* in Florida. *Plant Disease* 95: 1475.
- MCATEE, W. L. 1924. Notes on *Cenchrea* Westwood and *Cedusa* Fowler in America (Homoptera: Fulgoroidea). *Ann. Entomol. Soc. America* 17: 175-186.
- METCALF, Z. P. 1923. A key to the Fulgoridae of Eastern North America with descriptions of new species. *J. Elisha Mitchell Sci. Soc.* 38:139-230.
- METCALF, Z. P. 1938. The Fulgorina of Barro Colorado and other parts of Panama. *Bull. Mus. Comparative Zool.* 82: 277-423.
- O'BRIEN, L. B. 1982. Two Neotropical derbid genera with observations on wing rolling (Fulgoroidea, Homoptera). *Florida Entomol.* 65: 306-321.
- PARK, D-S., FOOTITT R., MAW, E., AND HEBERT, P. D. N. 2011. Barcoding bugs: DNA-based identification of the true bugs (Insecta: Hemiptera: Heteroptera). *PLoS ONE* 6: e18749. doi:10.1371/journal.pone.0018749. <http://www.plosone.org/article/info%3Adoi%2F10.1371%2Fjournal.pone.0018749> (Accessed 2 December 2013).
- RODRIGUEZ-LEON MERINO, R., AND HIDALGO-GATO GONZALEZ, M. M. 2005. Descripción de una nueva especie de *Omolocna* Fennah, 1945 (Hemiptera: Derbidae) de Cuba. *Bol. Soc. Entomol. Aragonesa* 37: 137-139.
- TSAI, J. H., AND KIRSCH, O. H. 1978. Bionomics of *Haplaxius crudus* (Homoptera: Cixiidae). *Environ. Entomol.* 7: 305-308.
- VAN DUZEE, E. P. 1909. Observations of some Hemiptera taken in Florida in the spring of 1908. *Bull. Buffalo Soc. Nat. Sci.* 9:149-230.
- WEATHER SOURCE. 2013. Past Monthly Weather Data for Gainesville, FL [Florida] ("Gainesville Rgnl Arpt") Jan 1960-2013. [http://weather-warehouse.com/WeatherHistory/PastWeatherData\\_GainesvilleRgnlArpt\\_Gainesville\\_FL\\_January.html](http://weather-warehouse.com/WeatherHistory/PastWeatherData_GainesvilleRgnlArpt_Gainesville_FL_January.html) (Accessed 2 Dec 2013).
- WEINTRAUB, P. G. AND WILSON, M. R. 2010. Control of Phytoplasma diseases and their vectors, pp. 233-249 *In* P. G. Weintraub and P. Jones, *Phytoplasmas: Genomes, plant hosts, and vectors*. CABI, Preston, UK. 331 pp.
- WILSON, S. W. 2005. Keys to the families of Fulgoromorpha with emphasis on planthoppers of potential economic importance in the southeastern United States (Hemiptera: Auchenorrhyncha). *Florida Entomol.* 88: 464-481.
- WILSON, S. W., DENNO, R. F., MITTER, C., AND WILSON, M. R. 1994. Evolutionary patterns of host plant use by delphacid planthoppers and their relatives (Chapter 1), pp. 7 - 113. *In* R. F. Denno and T. J. Perfect [eds.], *Planthoppers: Their Ecology and Management*. Chapman and Hall, Inc., New York. 799 pp.
- WILSON, S. W., AND MCPHERSON, J. E. 1980. Keys to the planthoppers, or Fulgoroidea, of Illinois (Homoptera). *Trans. Illinois Acad. Sci.* 73(2): 1-61.
- WILSON, S. W., AND MCPHERSON, J. E. 1981. Life histories of *Anormenis septentrionalis*, *Metcalfa pruinosa*, and *Ormenoides venusta* with descriptions of immature stages. *Ann. Entomol. Soc. America* 74: 299-311.
- WILSON, S. W., AND O'BRIEN, L. B. 1987. A survey of planthopper pests of economically important plants (Homoptera: Fulgoroidea). *Proc. 2nd Intl. Workshop on Leafhoppers and Planthoppers of Economic Importance*. Commonwealth Inst. Entomol., London, pp. 343-360.
- WILSON, S. W., AND TSAI, J. H. 1982. Descriptions of the immature stages of *Myndus crudus* (Homoptera: Fulgoroidea: Cixiidae). *J. New York Entomol. Soc.* 90: 166-175.
- WILSON, S. W., AND TSAI, J. H. 1984. *Ormenaria rufifascia* (Homoptera: Fulgoroidea: Flatidae): Descriptions of nymphal instars and notes on biology. *J. New York Entomol. Soc.* 92: 307-315.
- ZHANG, Y-P, UYEMOTO, J. K., AND KIRKPATRICK, C. 1998. A small-scale procedure for extracting nucleic acids from woody plants infected with various phytopathogens for PCR assay. *J. Virol. Methods.* 71: 45-50.