



Insecticidal Effect of Labramin, a Lectin—Like Protein Isolated from Seeds of the Beach Apricot Tree, *Labramia bojeri*, on the Mediterranean Flour Moth, *Ephestia kuehniella*

Authors: Martinez, Diego Stéfani Teodoro, Freire, Maria das Graças Machado, Mazzafera, Paulo, Araujo-Júnior, Roberto Theodoro, Bueno, Rafael Delmond, et al.

Source: Journal of Insect Science, 12(62) : 1-11

Published By: Entomological Society of America

URL: <https://doi.org/10.1673/031.012.6201>

BioOne Complete (complete.BioOne.org) is a full-text database of 200 subscribed and open-access titles in the biological, ecological, and environmental sciences published by nonprofit societies, associations, museums, institutions, and presses.

Your use of this PDF, the BioOne Complete website, and all posted and associated content indicates your acceptance of BioOne's Terms of Use, available at www.bioone.org/terms-of-use.

Usage of BioOne Complete content is strictly limited to personal, educational, and non - commercial use. Commercial inquiries or rights and permissions requests should be directed to the individual publisher as copyright holder.

BioOne sees sustainable scholarly publishing as an inherently collaborative enterprise connecting authors, nonprofit publishers, academic institutions, research libraries, and research funders in the common goal of maximizing access to critical research.



Insecticidal effect of labramin, a lectin-like protein isolated from seeds of the beach apricot tree, *Labramia bojeri*, on the Mediterranean flour moth, *Ephestia kuehniella*

Diego Stéfani Teodoro Martinez^{1,2a}, Maria das Graças Machado Freire^{3b}, Paulo Mazzafera^{4c}, Roberto Theodoro Araujo-Júnior^{1d}, Rafael Delmond Bueno^{1e}, and Maria Lígia Rodrigues Macedo^{1,2f*}

¹Laboratório de Purificação de Proteínas e suas Funções Biológicas, Departamento de Tecnologia de Alimentos e Saúde Pública, Centro de Ciências Biológicas e da Saúde, Universidade Federal de Mato Grosso do Sul (UFMS), Campo Grande, MS, Brazil

²Departamento de Bioquímica, Instituto de Biologia, Universidade Estadual de Campinas (UNICAMP), Campinas, SP, Brazil

³Laboratório de Química e Biomoléculas (LAQUIBIO), Centro de Pesquisas e Pós-graduação, Institutos Superiores do CENSA (ISECENSA), Campos do Goytacazes, RJ, Brazil

⁴Departamento de Fisiologia Vegetal, Instituto de Biologia, Universidade Estadual de Campinas (UNICAMP), Campinas, SP, Brazil

Abstract

The objective of this work was to study the insecticidal effect of labramin, a protein that shows lectin-like properties. Labramin was isolated from seeds of the Beach Apricot tree, *Labramia bojeri* A. DC ex Dubard (Ericales: Sapotaceae), and assessed against the development of the Mediterranean flour moth *Ephestia kuehniella* Zeller (Lepidoptera: Pyralidae), an important pest of stored products such as corn, wheat, rice, and flour. Results showed that labramin caused 90% larval mortality when incorporated in an artificial diet at a level of 1% (w/w). The presence of 0.25% labramin in the diet affected the larval and pupal developmental periods and the percentage of emerging adults. Treatments resulted in elevated levels of trypsin activity in midgut and fecal materials, indicating that labramin may have affected enzyme-regulatory mechanisms by perturbing peritrophic membranes in the midgut of *E. kuehniella* larvae. The results of dietary experiments with *E. kuehniella* larvae showed a reduced efficiency for the conversion of ingested and digested food, and an increase in approximate digestibility and metabolic cost. These findings suggest that labramin may hold promise as a control agent to engineer crop plants for insect resistance.

Keywords: insecticidal protein, *Ephestia kuehniella*, Lepidoptera

Correspondence: ^a diegostefani.br@gmail.com, ^b maria.freire@terra.com.br, ^c pmazza@unicamp.br, ^d roberto_tuca@yahoo.com.br, ^e rafaeldelbueno@yahoo.com.br, ^f bioplant@terra.com.br, * Corresponding author

Editor: Nannan Liu was editor of this paper.

Received: 19 June 2011, **Accepted:** 15 August 2011

Copyright : This is an open access paper. We use the Creative Commons Attribution 3.0 license that permits unrestricted use, provided that the paper is properly attributed.

ISSN: 1536-2442 | Vol. 12, Number 62

Cite this paper as:

Martinez DST, Freire MGM, Mazzafera P, Araujo-Júnior RT, Bueno RD, Macedo MLR. 2012. Insecticidal effect of labramin, a lectin-like protein isolated from seeds of the beach apricot tree, *Labramia bojeri*, on the Mediterranean flour moth, *Ephestia kuehniella*. *Journal of Insect Science* 12:62 available online: insectscience.org/12.62

Introduction

The Mediterranean flour moth, *Ephesia kuehniella* Zeller (Lepidoptera: Pyralidae), is widely distributed in tropical and temperate regions of the world. It can be found in a great variety of foodstuffs including flour, grain residues (insect-infected grain, broken kernels, and dust), and various whole grains (Ayvaz et al. 2008). Control of these insects generally requires the use of chemical insecticides, although these insecticides are toxic to humans and domestic animals, and negatively impact the environment (Boobis et al. 2008).

Plants have protective mechanisms that allow them to successfully resist unfavorable conditions, including attack by insects and phytopathogenic microorganisms. A mechanism to enhance the resistance of important crops is the use of plant insecticidal proteins, such as protease inhibitors, arcelins, chitinases, ribosome-inactivating proteins, and lectins (Carlini and Grossi-de-Sá 2002; Hosseininaveh et al. 2009).

The insecticidal activity of carbohydrate-binding plant lectins against insects of the orders Coleoptera, Diptera, Lepidoptera, and Homoptera has been studied (Macedo et al. 2003; Oliveira et al. 2011). The identification of an increasing number of plant lectins showing insecticidal activity towards economically important pest species has fueled growing interest in their potential use in the field for the engineering of crops (Sharma et al. 2004; Fitches et al. 2008). During the last decade, evidence has accumulated to indicate that plants also synthesize lectins in minute amounts in response to some specific stress factors and changing environmental conditions

(Vandenborre et al. 2011). Although the precise mode of action of insecticidal plant lectins is not fully understood, these proteins can act as recognition molecules in cell-cell or cell-matrix interactions, and may bind to the PM (peritrophic membrane) and/or chitinous structures in the midgut region of insects; this binding is necessary for lectins to exert their deleterious effects in insects. In addition, lectins are frequently resistant to proteolytic degradation by insect digestive enzymes and assimilatory proteins, and are therefore available to inhibit food digestion and absorption (Macedo et al. 2010).

Macedo et al. (2004a) purified a novel protein from the seeds of the Beach Apricot tree *Labramia bojeri* A. DC ex Dubard (Ericales: Sapotaceae) seeds. Labramin is a homologue of the kunitz-type trypsin inhibitor and has lectin-like properties. The study of the specificity of the lectin-like activity of labramin showed that it has higher affinity for glycoproteins and N-acetylglucosamine. This affinity was verified for insecticidal and physiological proteins, such as Arcelin-1 lectin-like (Fabre et al. 1998) and typical plant lectins (Machuka et al. 1999).

The objective of this work was to study the insecticidal effect of labramin against the *E. kuehniella*. The effect of labramin was evaluated during different stages of insect development and by analyzing nutritional parameters and the activity of trypsin, the main enzyme for protein digestion in *E. kuehniella*.

Materials and Methods

Materials

The seeds of *L. bojeri* used in this study were collected in the state of Rio de Janeiro, Brazil.

N-benzoyl-DL-arginyl-p-nitroanilide (BAPNA) was supplied from Sigma-Aldrich (www.sigmaaldrich.com). All other chemicals were of reagent grade and obtained from local suppliers.

Insect cultures

A culture was originally supplied by Dr. J.R.P. Parra (Laboratory of Insect Biology, University of São Paulo, Piracicaba, São Paulo, Brazil), and was routinely maintained on artificial diet prepared by mixing wheat flour, whole wheat husks, whole wheat, and yeast (8:2:1.9:0.1) in the Laboratory of Protein Purification and its Biological Functions of the Federal University of Mato Grosso do Sul, Brazil.

Extraction and purification of labramin

Labramin was prepared according to Macedo et al. (2004a). Seeds of *L. bojeri* were ground and extracted in 150 mM NaCl buffer (1:5 w:v ratio) at 4 °C for 24 hours, then centrifuged at $10,000 \times g$ (30 min; 4 °C). The clear supernatant (crude extract) was used to determine the protein content and hemagglutinating activity. Pure labramin was obtained in three chromatographic steps: Sephacryl S-400, DEAE-sepharose, and reverse phase HPLC on C18 μ -Bondapack column.

Protein concentrations were determined by the dye-binding method of Bradford (1976), with bovine serum albumin as the standard.

Insect bioassays

Insect bioassays were maintained in plastic boxes (5.0 \times 3.0 cm) with perforated plastic covers at 65-75% RH, 16:8 L:D photoperiod, and a temperature of 28 ± 1 °C.

To examine the effects of labramin on *E. kuehniella*, larvae were reared on an artificial

diet containing 0.25, 0.50, or 1.00% (w/w) labramin. An artificial diet without labramin was used as the control. Each treatment was repeated five times using 10 neonate larvae per replicate, and larval weights and survival were recorded in the fourth instar.

A total of 75 individuals were reared from neonate to adult stage on artificial diet containing the control diet or 0.25% (w/w) labramin. The intermolt durations and mortalities were recorded daily. In addition, surviving fourth instars were used to assess the effects of labramin on digestion and the trypsin-like activity of the midgut. Feces were separated and stored at -20 °C until required.

Measurement of nutritional parameters

Nutritional parameters were compared between fourth instar larvae that were exposed to either a labramin-treated (0.25% w/w) or a control diet. Five *E. kuehniella* larvae (newly hatched) were placed in plastic boxes ($n = 50$) containing a known weight of the diet. Fourth instar larvae were examined at 25 days after treatment. Larvae, feces, and the remaining uneaten diet were separated, dried, and weighed. The following nutritional indices were then measured according Scriber and Slansky Jr. (1981):

Efficiency of conversion of ingested food (ECI) estimates the percentage of ingested food that is converted to biomass, calculated as: $(\text{biomass gained (mg fresh mass)} / \text{food ingested (mg dry mass)}) \times 100$.

Efficiency of conversion of digested food (ECD) estimates the efficiency with which digested food is converted to biomass, calculated as: $\text{biomass gained (mg fresh mass)} / (\text{food ingested (mg dry mass)} - \text{feces (mg dry mass)}) \times 100$.

Metabolic cost (MC) was calculated as $100 - \text{ECD}$.

Approximate digestibility (AD) estimates the amount of ingested food that is digested, and was calculated as: $(\text{food ingested (mg dry mass)} - \text{feces (mg dry mass)}) / \text{food ingested (mg dry mass)} \times 100$.

Midgut preparation

Homogenates of the larval guts were prepared according to Macedo et al. (1993). Fourth instar larvae were cold-immobilized and their midguts removed in cold 150 mM NaCl and stored frozen at $-20\text{ }^{\circ}\text{C}$ until use. Later the midguts were homogenized in 150 mM NaCl, centrifuged at $6000 \times g$ for five min at $8\text{ }^{\circ}\text{C}$ and the supernatants (fluid midgut) were pooled and kept on ice for enzymatic assays.

Preparation of fecal samples

The fecal samples of fourth instars after treatment were homogenized and centrifuged as described above, then the supernatants were pooled and kept on ice for enzymatic assays.

Enzymatic assay

Trypsin-like enzymes were assayed using BApNA as substrate. For routine assays, N-benzoyl-DL-arginyl-p-nitroanilide (BApNA) was used at a final concentration of 1 mM in 1% (v/v) DMSO. Aliquots (50 μg of protein) of midgut larval extracts and feces were incubated in 50 mM Tris-HCl buffer, pH 8.0, in a final volume of 0.1 mL for 10 min, before adding 1 mL of substrate. The reaction was allowed to proceed at $37\text{ }^{\circ}\text{C}$ for 20 min and then stopped by adding 0.2 mL of 30% (v/v) acetic acid. The resulting absorbance was read at 410 nm. Each assay was carried out in triplicate. The linearity of the relationship between the changes in absorbance with time was checked to ensure substrate concentrations were not limiting. Substrate

and enzyme controls were run to ensure the validity of sample absorbance readings. Protein concentrations were determined by the dye-binding method of Bradford (1976), with bovine serum albumin as the standard.

Digestion of labramin

Larval gut homogenates were prepared as described above. For this, 10 larval midguts of *E. kuehniella* (fourth instar) were dissected and extracted in 1 mL of 0.1 M Tris, pH 8.0, and processed as described previously. Labramin was incubated with this homogenate in Tris buffer (final concentration, 2 mg/mL). The labramin/midgut protein ratio was 1:10 (w/w). The digestion was carried out for 0, 6, 12, 24, and 48 hours at $37\text{ }^{\circ}\text{C}$ and was stopped by immersing the tubes in boiling water for two min. The degradation of BSA was used as a positive control for serine protease activity. The proteins were subsequently separated by SDS-PAGE on 12.5% polyacrylamide gels as described by Laemmli (1970).

Statistical analysis

All data were examined using the Mann-Whitney Test. Statistical significance was considered at the $p < 0.05$ level.

Results

Effect of labramin on fourth-instar larvae

The effect of labramin on the development of *A. kuehniella* was assessed by determining the number and weight of surviving larvae (fourth-instar) fed on a diet containing increasing amounts of labramin (Figure 1). The mortality and weight of larvae fed with the control diet were about 5% and 5.7 mg, respectively, and when fed with 1.0% labramin were about 90% and 0.5 mg, respectively. The regression analysis shows that 0.5 and 0.48% labramin caused a 50% reduction in the average survival (LD_{50}) and

weight (ED_{50}) of the larvae, respectively, compared to the control.

Effects of labramin on developmental stages

The larval and pupal developmental times of larvae fed on labramin diet at 0.25% were significantly longer. The larval period increased by 14 days and the pupal period by two days, resulting in a prolonged period of development from neonate larvae to adults. Labramin treatment caused 57% mortality of *E. kuehniella*, while the emergence rate of control larvae was 85%. These results are summarized in Table 1.

Nutritional parameters

Labramin incorporated into artificial diet at 0.25% (w/w) significantly affected the nutritional parameters of *A. kuehniella* fourth-instar larvae. Larvae reared on a labramin-containing diet consumed less and produced less feces than the control group. As shown in Figure 2A, the mean diet consumption and fecal production in labramin-fed larvae were reduced by 41% and 50%, respectively, compared to the control. No significant differences were observed in the consumption of the diet when assessed as a ratio of the body weight for both the control and the 0.25% labramin groups (Figure 2B). Labramin reduced the conversion of ingested (ECI) and digested food (ECD) into biomass by *A. kuehniella* larvae by approximately 27% and 26%, respectively. Labramin-fed larvae presented a higher metabolic cost (MC) and approximate digestibility (AD) indices of about 32% and 91%, respectively, compared to the control larvae (Table 2).

Trypsin-like activity

The labramin diet significantly increased total trypsin activity in the midgut by approximately 19%. Elevated levels of trypsin

Table 1. Duration of developmental stages and mortality of *Ephesia kuehniella* fed on an artificial diet containing 0.25% labramin (w/w).

Development stages	Treatment	Duration (days \pm SD)	Mortality (%)
Larval	Control	32.1 \pm 2.5a	9.3a
	Labramin	46.9 \pm 6.0b	32.0b
Pupal	Control	9.1 \pm 1.03a	5.3a
	Labramin	11.2 \pm 2.14b	10.7b
Adult	Control	41.4 \pm 3.9a	14.7a
	Labramin	58.2 \pm 8.3b	57.3b

Means (days \pm SD) followed by different letters denote a significant difference between the control and labramin treatments ($n = 75$, $p < 0.05$; Mann-Whitney U).

Table 2. Nutritional indices of *Ephesia kuehniella* fourth instar larvae fed on 0.25% labramin treated artificial diet.

Treatment	Nutritional indices (mean \pm SE)*			
	ECI (%)	ECD (%)	MC (%)	AD (%)
Control	51.2 \pm 2.3a	55.5 \pm 4.2a	45.1 \pm 3.8a	84.0 \pm 2.3a
Labramin	37.4 \pm 3.5b	40.2 \pm 3.2b	59.8 \pm 2.8b	91.2 \pm 4.7b

Different letters denote a significant difference between the control and Labramin treatments. ($n = 50$, $p < 0.05$; Mann-Whitney U).

*ECI, efficiency of conversion of ingested food; ECD, efficiency of conversion of digested food; MC, metabolic cost; AD, approximate digestibility.

activity in fecal material were also observed. Labramin-fed larvae had an approximately 23% higher activity compared to that of controls (activity per μ g feces protein; Figure 3).

Digestion of labramin and gel electrophoresis

The susceptibility of labramin to degradation by *A. kuehniella* midgut proteolytic enzymes was assessed by incubating the lectin with these enzymes followed by SDS-PAGE (Figure 4). Incubation of labramin with *A. kuehniella* midgut extracts for up to 48 hours demonstrated that this lectin-like compound was resistant to proteolysis (Figure 4). Bovine serine albumin was hydrolyzed within one hour when incubated with *E. kuehniella* midgut proteolytic enzymes (data not shown).

Discussion

The present study describes the insecticidal and physiological properties of labramin, a lectin-like protein isolated from *L. bojeri* seeds. *Ephestia kuehniella* is a polyphagous pest that feeds on a wide variety of stored products. The present study describes the insecticidal properties of labramin, a lectin-like protein isolated from *L. bojeri* against *E. kuehniella*.

Various plant lectins have shown entomotoxic effects when fed to insects from Coleoptera, Hemiptera, and Lepidoptera (Carlini and Grossi-de-Sá 2002; Lam and Ng 2011). In general, previous studies have tested toxicity by incorporating lectins into artificial diets at concentrations ranging from 1 to 50 ng/g of diet, or from 5 to 1500 µg/mL diet to deliver these proteins to chewing and sucking insects, respectively (Vasconcelos and Oliveira 2004). Purified labramin caused a significant decrease in the weight and survival of the *A. kuehniella* fourth-instar larvae, when incorporated into an artificial diet at a level of 1%. The diet containing 0.25% labramin caused a 32% increase in mortality and a 25% reduction in the average weight of the fourth-instar larvae (Figure 1). Generally, addition of 0.25% labramin to the diet prolonged the larval and pupal developmental periods (total of 16 days) and reduced the percentage of emerging adults (mortality ~57%) compared to the control (Table 1). As such, labramin may play an important role in the control and reduction of the population of this pest.

It has been shown that lectins displaying similar saccharide specificity may have very different effects on closely-related insects (Gatehouse et al. 1995). The LC₅₀ of *Koelreuteria paniculata* seed lectin was 0.65%, and the ED₅₀ was 0.20% when fed to

E. kuehniella larvae (Macedo et al. 2003). However, for these same insect larvae, *Bauhinia monandra* leaf lectin at a concentration of up to 1% did not significantly decrease survival, but produced a decrease of 40% in larval weight (Macedo et al. 2006).

The larvae reared on the labramin-containing diet consumed less and produced less feces than the control group during the fourth instar (Figure 2A). When the consumption of diet was assessed as a ratio of body weight, no significant difference between the control and the 0.25% labramin treatment was observed (Figure 2B). Thus, there was no evidence that labramin exerts a feeding deterrent effect. Similar results were reported for *Lacanobia oleracea* when fed with Galanthus nivalis agglutinin (Fitches et al. 1997), as also observed for the soybean pest *A. gemmatilis* (Macedo et al. 2010). The reduction in larval weight, despite the increase in consumption for LbAE-fed larvae, suggests that LbAE inhibits nutrient uptake in *A. gemmatilis* (Eisemann et al. 1994).

Therefore, the diet containing 0.25% labramin was less appropriate for *E. kuehniella* larval growth, since labramin-fed larvae presented higher metabolic cost indices than control larvae (Table 2). As such, labramin apparently did not affect the larval feeding pattern, as also observed for the soybean pest *A. gemmatilis* (Macedo et al. 2010). The reduction in larval weight, despite the increase in consumption by labramin-fed larvae, suggests that labramin inhibits nutrient uptake in *A. gemmatilis* (Eisemann et al. 1994). ECI is an overall measurement of an insect's ability to utilize the food that it ingests for growth. A decrease in ECI indicates that more food is being metabolized for energy and less is being converted into body substance (i.e., growth). The proportion of digested food that

is actually transformed into net insect biomass is denoted by ECD, the efficiency of conversion of digested food. ECD also decreases as the proportion of digested food metabolized for energy increases (Farrar et al. 1989; Weeler and Isman 2001). In this study, ECI and ECD values decreased by about 27% and 26%, respectively, indicating that labramin exhibits some toxicity and/or antinutritional properties in *E. kuehniella* larvae. A greater approximate digestibility value would help to meet the increased demand for nutrients and compensate for the deficiency in foodstuff conversion (reduction in ECI and ECD), perhaps by diverting energy from biomass production into detoxification (Table 2). Coelho et al. (2007) observed similar nutritional indices in *E. kuehniella* larvae when they studied an insecticidal lectin from *Annona coriacea* seeds. However, the precise mechanism for the action of lectins in insects is still unknown (Murdock and Shade 2002). A prerequisite for toxicity is that the lectin should be able to survive the proteolytic environment of the insect midgut. Depending on their resistance to gut proteolysis and on their specificity for carbohydrate receptors, lectins may bind to different parts of the intestine to cause various changes in cellular function and morphology (Puztai et al. 1990; Harper et al. 1998; Macedo et al. 2004b). The incubation of labramin with proteases of *E. kuehniella* midgut homogenates showed that labramin is resistant to hydrolysis by *E. kuehniella* enzymes (Figure 4), and does not demonstrate any inhibition in trypsin activities up to a concentration of 100 µg (data not shown).

To establish whether labramin acts by disrupting the digestive capacity of the larval midgut of *E. kuehniella*, here we reported the effects of 0.25% labramin on an enzyme involved in protein digestion, the soluble

endoprotease trypsin. Trypsin-like proteases are major digestive enzymes in lepidopteran larvae (Terra et al. 1996; Srinivasan et al. 2006). Labramin stimulated an increase in the trypsin-like activities in the midgut by approximately 19% (Figure 3). Since labramin is known to be resistant to proteolysis, the elevated gut protein levels observed in the feeding assay may partially reflect an accumulation of lectin-like protein bound to larval tissues, which in turn could lead to the induction of trypsin-like activity. Fitches et al. (1998) showed that midgut trypsin secretion can be stimulated by *Canavalia ensiformes* lectin in *L. oleracea* larvae.

The peritrophic membrane (PM) is an essential structure for the normal physiology of the insect midgut. It has been suggested that crucial selective pressure during the development of the PM is necessary to avoid the evacuation of digestive enzymes with the feces via the organization of the gut lumen into the ecto- and endo-peritrophic spaces (Terra 2001). The PM consists of proteins, proteoglycans, and chitin (containing N-acetylglucosamine residues) (Wang and Granados 2001). In this study, labramin binding may have affected enzyme-regulatory mechanisms as a consequence of perturbation of the peritrophic membrane environment. Part of this labramin binding probably represents interactions with chitinous structures present in the insect's membranes, since this lectin-like protein bound to a chitin column (Macedo et al. 2004a). Elevated levels of trypsin activity in fecal material were also observed; lectin-like fed insects had ~23% higher activity than the controls. A change in the membrane environment and consequent disruption of enzyme recycling mechanisms may provide an alternative explanation for the observed increases in the tryptic activity of fecal extracts collected from 0.25% labramin-

fed larvae. Recently, a similar effect was verified for *E. kuehniella* larvae when fed with Pouterin, a lectin-like protein from *Pouteria torta* seeds (Boleti et al. 2009). In conclusion, labramin may be considered a potential tool for crop protection strategies due to its ability to act on the developmental stages of the *E. kuehniella*.

Acknowledgements

This work was supported by FUNDECT (Fundação de Apoio ao Desenvolvimento do Ensino, Ciência e Tecnologia do Estado de Mato Grosso do Sul), CNPq (Conselho Nacional de Desenvolvimento Científico e Tecnológico), FINEP (Financiamento de Estudos e Projetos/Mistério da Ciência e Tecnologia), and PROPP/UFMS (Pró-Reitoria de Pesquisa e Pós-graduação da Universidade Federal de Mato Grosso do Sul).

References

- Ayvaz A, Osman S, Salih K, Ismet O. 2008. Insecticidal activity of the essential oils from different plants against three stored-product insects. *Journal of Insect Science* 10: 21. Available online, insectscience.org/10.21
- Boobis AR, Ossendorp BC, Banasiak U, Hamey PY, Sebestyen I, Moretto A. 2008. Cumulative risk assessment of pesticide residues in food. *Toxicology Letters* 15: 137-150.
- Boleti AP, Kubo CEG, Macedo MLR. 2009. Effect of Pouterin, a protein from *Pouteria torta* (Sapotaceae) seeds, on the development of *Ephestia kuehniella* (Lepidoptera: Pyralidae). *International Journal of Tropical Insect Science* 29: 24-30
- Bradford MM. 1976. A rapid and sensitive method for the quantification of microgram quantities of protein using the principle of protein-dye binding. *Analytical Biochemistry* 72: 248-254.
- Carlini CR, Grossi-de-Sá MF. 2002. Plant toxic proteins with insecticidal properties. A review on their potentialities as bioinsecticides. *Toxicon* 40: 1515-1539.
- Coelho MB, Marangoni S, Macedo MLR. 2007. Insecticidal action of *Annona coriacea* lectin against the flour moth *Ephestia kuehniella* and the rice moth *Corcyra cephalonica* (Lepidoptera: Pyralidae). *Comparative Biochemistry and Physiology* 146: 406-414.
- Eisemann CH, Donaldson RA, Pearson RD, Cadagon LC, Vacuolo T, Tellman RL. 1994. Larvicidal activity of lectins on *Lucilia cuprina*: mechanism of action. *Entomologia Experimentalis et Applicata* 72: 1-11.
- Fabre C, Causse H, Mourey L, Honinckx J, Riviere M, Hendriks H, Puzo G, Samana JP, Rougé P. 1998. Characterization and sugar-binding properties of Arcelin-1, an insecticidal lectin-like protein isolated from kidney bean (*Phaseolus vulgaris* L. cv. RAZ-2) seeds. *Biochemical Journal* 329: 551-560.
- Farrar RR, Barbour JD, Kennedy GG. 1989. Quantifying food consumption and growth in insects. *Annals of the Entomological Society of America* 82: 593-598.
- Fitches E, Gatehouse AMR, Gatehouse JA. 1997 Effects of snowdrop lectin (GNA) delivered via artificial and transgenic plants on the development of tomato moth (*Lacanobia oleracea*) larvae in laboratory and

glasshouse trials. *Journal of Insect Physiology* 43: 727-739.

Fitches E, Gatehouse JA. 1998. A comparison of the short and long term effects of insecticidal lectins on the activities of soluble and brush border enzymes of tomato moth larvae (*Lacanobia oleracea*). *Journal of Insect Physiology* 44: 1213-1224.

Fitches E, Wiles D, Douglas AE, Hinchliffe G, Audsley N, Gatehouse JA. 2008. The insecticidal activity of recombinant garlic lectins towards aphids. *Insect Biochemistry and Molecular Biology* 38: 905-915.

Gatehouse AM, Powell KS, Peumans WJ, Van Damme EJ, Gatehouse JA. 1995. Insecticidal properties of plant lectins: their potential in plant protection. In: Pusztai A, Bardocz S, Editors. *Lectins: Biomedical Perspectives*. pp. 35-58. Taylor and Francis.

Harper MS, Hopkins TL, Czapla TH. 1998. Effect of wheat germ agglutinin on formation and structure of the peritrophic membrane in European corn borer (*Ostrinia nubilalis*) larvae. *Tissue and Cell* 30: 166-176.

Hosseininaveh V, Bandani A, Hosseininaveh F. 2009. Digestive proteolytic activity in the Sunn pest, *Eurygaster integriceps*. *Journal of Insect Science* 9: 70. Available online, insectscience.org/9.70

Laemmli UK. 1970. Cleavage of structural proteins during the assembly of the head of bacteriophage T4. *Nature* 227: 680-685.

Lam SK, Ng TB. 2011. Lectins: production and practical applications. *Applied Microbiology and Biotechnology* 89: 45-55

Macedo MLR, Fernandes KVS, Sales MP, Xavier-Filho J. 1993. Vicilins variants and the resistance of cowpea (*Vigna unguiculata*) seeds to the cowpea weevil (*Callosobruchus maculatus*). *Comparative Biochemistry and Physiology* 105: 84-94.

Macedo MLR, Durigan RA, Silva DS, Marangoni S, Freire MGM, Parra JRP. 2010. *Adenanthera pavonina* trypsin inhibitor retard growth of *Ephestia kuehniella* (Lepidoptera: Pyralidae). *Archives of Insect Biochemistry and Physiology* 73: 213-231.

Macedo MLR, Damico DCS, Freire MGM, Toyama MH, Marangoni S, Novello JC. 2003. Purification and characterization of an N-acetylglucosamine-binding lectin from *Koelreuteria paniculata* seeds and its effect on the larval development of *Callosobruchus maculatus* (Coleoptera: Bruchidae) and *Ephestia kuehniella* (Lepidoptera: Pyralidae). *Journal of Agricultural and Food Chemistry* 51: 2980-2986.

Macedo MLR, Freire MGM, Martins LTDM, Martinez DST, Gomes VM, Smolka MB, Toyama MH, Marangoni S, Coelho LCBB. 2004a. Novel protein from *Labramia bojeri* A. DC. Seeds homologue to kunitz-type trypsin inhibitor with lectin-like properties. *Journal of Agricultural and Food Chemistry* 52: 7548-7554.

Macedo MLR, Castro MM, Freire MGM. 2004b. Mechanisms of the insecticidal action of TEL (*Talisia esculenta* lectin) against *Callosobruchus maculatus* (Coleoptera: Bruchidae). *Archives of Insect Biochemistry and Physiology* 56: 84-96.

Macedo MLR, Freire MGM, Silva MBR, Coelho LCBB. 2006 Insecticidal action of *Bauhinia monandra* leaf lectin (BmoLL)

against *Ephestia kuehniella* (Lepidoptera: Pyralidae), *Zabrotes subfasciatus* and *Callosobruchus maculatus* (Coleoptera: Bruchidae). *Comparative Biochemistry and Physiology* 146: 486-498.

Machuka J, Van Damme EJM, Peumans WJ, Jackai LEN. 1999. Effect of plant lectins on larval development of the legume pod borer, *Maruca vitrata*. *Entomologia Experimentalis et Applicata* 93: 179-187.

Murdock LL, Shade RE. 2002. Lectins and proteases inhibitors as plant defenses against insects. *Journal of Agricultural and Food Chemistry* 50: 6605-6611.

Oliveira CFR, Luz LA, Paiva PMG, Coelho LCBB, Marangoni S, Macedo MLR. 2011. Evaluation of seed coagulant *Moringa oleifera* lectin (cMoL) as a bioinsecticidal tool with potential for the control of insects. *Process Biochemistry* 46: 498-504.

Pusztai A, Ewen SWB, Grant G, Peumans WJ, Van Damme EJM, Rubio L, Bardocz S. 1990. Relationship between survival and binding of plant lectins during small intestinal passage and their effectiveness as growth factors. *Digestion* 46: 308-316.

Scriber JM, Slansky Jr. F. 1981 The nutritional ecology of immature insects. *Annual Review of Entomology* 26: 183-211.

Sharma HC, Sharma KK, Crouch JH. 2004. Genetic transformation of crops for insect resistance: Potential and limitations. *Critical Reviews in Plant Sciences* 23: 47-72.

Srinivasan A, Giri AP, Gupta VS. 2006. Structural and functional diversities in lepidopteran serine proteases. *Cellular and Molecular Biology Letters* 11: 132-154.

Terra WR, Ferreira C, Jordao BP, Dilion RJ. 1996 Digestive enzymes. In: Lehane MJ, Billingsley PF, Editors. *Biology of the Insect Midgut*. pp. 153-194. Chapman and Hall.

Terra WR. 2001. The origin and functions of the insect peritrophic membrane and peritrophic gel. *Archives of Insect Biochemistry and Physiology* 47: 47-61.

Vandenborre G, Smagghe G, Van Damme EJ. 2011. Plant lectins as defense proteins against phytophagous insects. *Phytochemistry* 72(13): 1538-1550.

Vasconcelos IM, Oliveira JTA. 2004. Antinutritional properties of plant lectins. *Toxicon* 15: 385-403.

Wang P, Granados RR. 2001 Molecular structure of the peritrophic membrane (PM): identification of potential PM target sites for insect control. *Archives of Insect Biochemistry and Physiology* 47: 110-118.

Weeler DA, Isman MB. 2001 Antifeedant and toxic activity of *Trichilia Americana* extract against the larvae of *Spodoptera litura*. *Entomologia Experimentalis et Applicata* 98: 9-16.

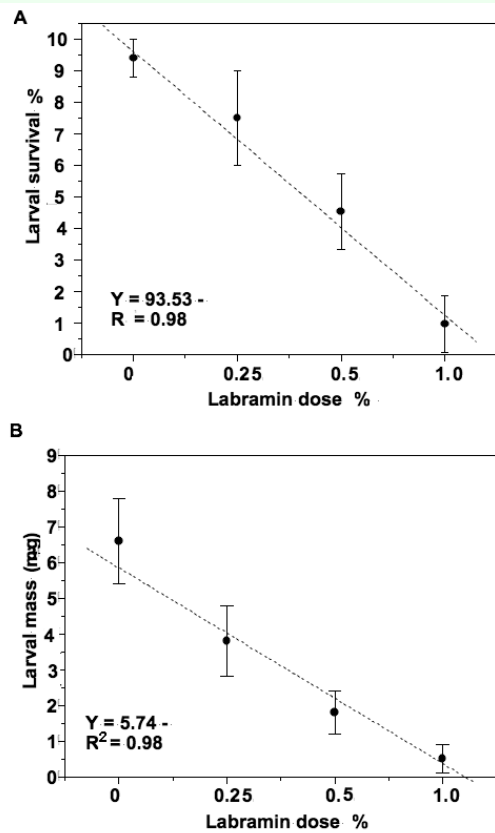


Figure 1. Effect of dietary labramin on *Ephestia kuehniella* artificial larval: (A) Survival (%) and (B) weight (mg) using an artificial diet bioassay. Each point has $n = 50$. Bars indicate SE of the mean. The same letters indicate that there were no significant statistical differences (Mann-Whitney U, $n = 50$, $p < 0.05$). High quality figures are available online.

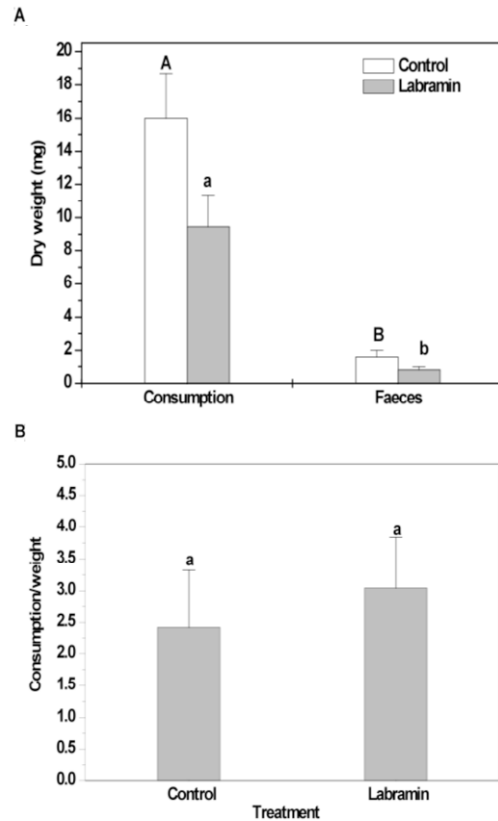


Figure 2. Nutritional parameters measured for *Ephestia kuehniella* larvae in the 0.25% labramin (w/w) feeding trial. (A) Diet consumption and fecal production by larvae of fourth-instar. (B) Mean diet consumption as a ratio to mean larval body weight. Bars indicate SE of the mean. The same letters indicate that there were no significant statistical differences between the control and labramin treatments (Mann-Whitney U, $n = 50$, $p < 0.05$). High quality figures are available online.

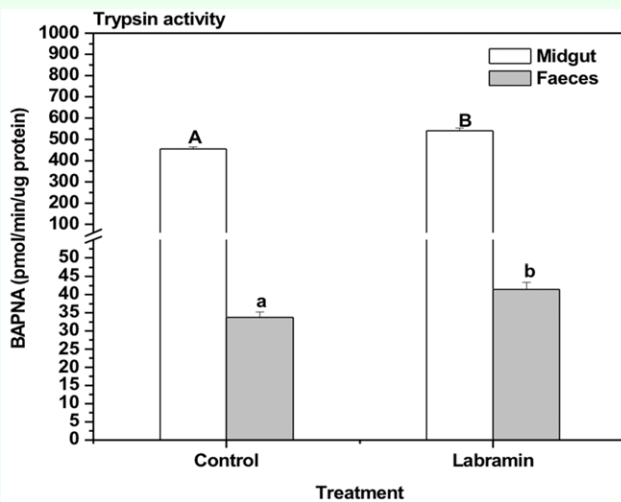


Figure 3. Trypsin activities in midgut and feces from *Ephestia kuehniella* larvae after exposure to 0.25% labramin in the feeding trial. Larvae were fed for four instars (25 days) on control diet or diets containing 0.25% labramin. Enzyme activities are expressed as mean of total pmols of product per minute per μg protein. The product was p-nitroanilide for trypsin assay. Bars indicate SE of the mean. Different letters denote a significant difference between the control and labramin treatments (Mann-Whitney U, $n = 50$, $p < 0.05$). High quality figures are available online.

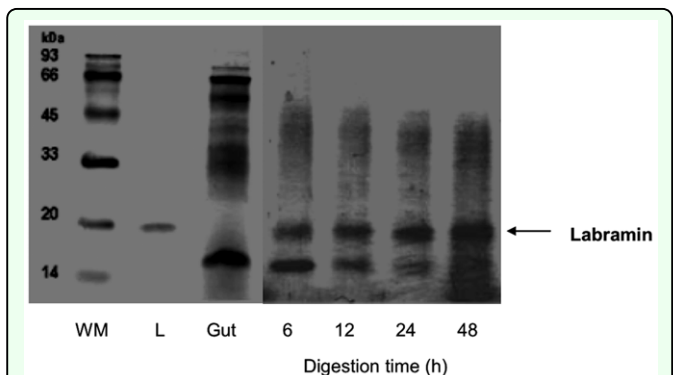


Figure 4. SDS-PAGE of labramin digested by midgut extracts of *Ephestia kuehniella*. High quality figures are available online.