

## **Effect of Foraging and Nest Defense Tradeoffs on the Reproductive Success of Wood Storks (*Mycteria americana*)**

Authors: Bruant, Alexis, Picardi, Simona, Frederick, Peter, and Basille, Mathieu

Source: Waterbirds, 43(2) : 134-146

Published By: The Waterbird Society

URL: <https://doi.org/10.1675/063.043.0202>

---

BioOne Complete (complete.BioOne.org) is a full-text database of 200 subscribed and open-access titles in the biological, ecological, and environmental sciences published by nonprofit societies, associations, museums, institutions, and presses.

Your use of this PDF, the BioOne Complete website, and all posted and associated content indicates your acceptance of BioOne's Terms of Use, available at [www.bioone.org/terms-of-use](http://www.bioone.org/terms-of-use).

Usage of BioOne Complete content is strictly limited to personal, educational, and non - commercial use. Commercial inquiries or rights and permissions requests should be directed to the individual publisher as copyright holder.

---

BioOne sees sustainable scholarly publishing as an inherently collaborative enterprise connecting authors, nonprofit publishers, academic institutions, research libraries, and research funders in the common goal of maximizing access to critical research.

# Effect of Foraging and Nest Defense Tradeoffs on the Reproductive Success of Wood Storks (*Mycteria americana*)

ALEXIS BRUANT<sup>1,\*</sup>, SIMONA PICARDI<sup>1</sup>, PETER FREDERICK<sup>2</sup> AND MATHIEU BASILLE<sup>1</sup>

<sup>1</sup>Department of Wildlife Ecology and Conservation, Fort Lauderdale Research and Education Center, University of Florida, Davie, Florida, 33314, USA

<sup>2</sup>Department of Wildlife Ecology and Conservation, P.O. Box 110430, University of Florida, Gainesville, Florida, 32611, USA

\*Corresponding author; E-mail: bruant.alexis@gmail.com

**Abstract.**—In many species of birds, parental care is provided by both parents to maximize offspring survival, and there may be important trade-offs between maximizing food gathering and nest protection during the nesting period. The role of parental care in determining reproductive success was investigated in Wood Storks (*Mycteria americana*), and specifically how the trade-off between frequency and duration of foraging trips and nest protection contributed to the nesting outcome. Parental behavior of 85 pairs of Wood Storks was monitored throughout the nesting season in two breeding colonies in Palm Beach County, Florida, USA. Wood Storks gradually increased the frequency, but not the duration, of foraging trips as chicks developed. The ratio of hatchlings to fledglings was positively associated with the frequency of foraging trips during late chick development. Intra-specific aggressions resulting in nest takeovers affected 32% of the nests. Occurrence of nest takeovers were higher for later-breeding pairs, and happened primarily in the first few weeks of incubation, but was not affected by the degree of joint nest attendance of both parents. These results establish a functional link between parental effort and reproductive outcome in Wood Storks, and highlight the importance of frequent foraging trips, but not nest attendance, by parents. Received 25 July 2019, accepted 29 January 2020.

**Key words.**—foraging ecology, foraging trips, intraspecific aggression, nest attendance, nest ecology, nest takeover, parental care, stork

Waterbirds 43(2): 134-146, 2020

Any pre- or post-breeding investment made by a parent that increases offspring survival (parental care; Trivers 1972; Westneat and Sherman 1993; Royle *et al.* 2012) may affect reproductive success (Eggert *et al.* 1998). For many species of birds, including most waterbirds (Del Hoyo *et al.* 1992), biparental care is the rule (> 90%; Silver *et al.* 1985; Cockburn 2006; Harrison *et al.* 2009). The degree of parental care received by offspring can be crucial for their survival and, as a consequence, can affect the reproductive success of the parents (Elowe and Dodge 1989; Dijkstra *et al.* 1990; Boland *et al.* 1997). For instance, quality of parental care and body condition of parents, instead of quality of eggs (egg size), has been shown to affect chick survival in Short-tailed Shearwaters (*Puffinus tenuirostris*; Meathrel *et al.* 1993).

Wood Stork (*Mycteria americana*) behaviors such as incubation, brooding, number of feedings or nest protection have been studied (Clark 1980; Bryan and Coulter 1991; Bryan *et al.* 2005), but the effect of Wood Stork behavior on reproductive success has not been investigated yet. To our knowledge, no study has quantified the di-

rect impact of food provisioning on survival of chicks in Wood Stork. In particular, altricial and semi-altricial hatchlings cannot feed themselves, yet require a copious and steady flow of nutrients to fuel rapid growth and development (Schwagmeyer and Mock 2008). However, provisioning takes time and energy, and parents should trade off optimal levels of offspring provisioning versus nest defense (Mutzel *et al.* 2013), clutch size (Dijkstra *et al.* 1990), clutch mass (Hébert and Barclay 1988), or parental body condition (Erikstad *et al.* 1997). Moreno *et al.* (1999) showed that increasing the intake of food positively affected reproductive success, but little is known about how the trade-off between food provisioning and nest protection impacts reproductive success.

In Wood Storks, both parents provide parental care (Kahl 1962, 1971; U.S. Fish and Wildlife Service 2001). Earlier studies suggest that daily care from both parents is strictly necessary to ensure survival of eggs and offspring in this species (Clark 1980; Bryan *et al.* 2005). Survival of nestling Wood Storks is affected by many factors, including predation (Rodgers 1987), human disturbance (Bou-

ton *et al.* 2005), intraspecific aggression that can lead to nest takeover (Bryan and Coulter 1991), contamination with toxic chemicals (Fleming *et al.* 1984; Burger *et al.* 1993), as well as weather conditions, such as storms associated with strong winds (Coulter and Bryan 1995; Bouton *et al.* 2005; Bryan and Robinette 2008). However, the reproductive success of Wood Stork seems to be primarily related to prey availability in the environment (Ogden 1994; Griffin *et al.* 2008), which affects the ability of parents to provide sufficient food to sustain the development of chicks until fledging. Wood Storks feed mainly on fish (Kahl 1962, 1971; Ogden *et al.* 1976) captured in 15-50 cm of water (Coulter and Bryan 1993) using "tactolocation" (Kahl and Peacock 1963; Kahl 1964; Clark 1979). This technique is extremely sensitive to variations in fish availability. Sufficient rains prior to the breeding season are required to increase wetland water levels and increase prey population growth, followed by decreased water levels during the nesting phase to concentrate prey and ensure efficient foraging when energetic needs are highest (Kushlan *et al.* 1975; Ogden and Nesbitt 1979; Beerens *et al.* 2015). In contrast, heavy rains during the breeding season can result in colony abandonment due to dispersion of prey (Frederick and Collopy 1989; Ramo and Busto 1992).

Biparental contributions to nest protection and food provisioning by Wood Storks have been confirmed in several studies (Kahl 1962; Coulter *et al.* 1999; Griffin *et al.* 2008). Wood Stork parents must budget their time efficiently to provide adequate food and at the same time protect their young in the first weeks after hatching, when chicks are unable to defend themselves or thermoregulate independently (Bryan and Coulter 1987). In this first phase, the continuous presence of a parent on the nest is necessary (Clark 1980; Bryan *et al.* 2005). After three weeks, chicks exhibit a behavioral change, becoming aggressive to any approach by conspecifics and other species (Kahl 1971) and are able to thermoregulate (Clark 1980). This increased independence allows both parents to forage simultaneously when food require-

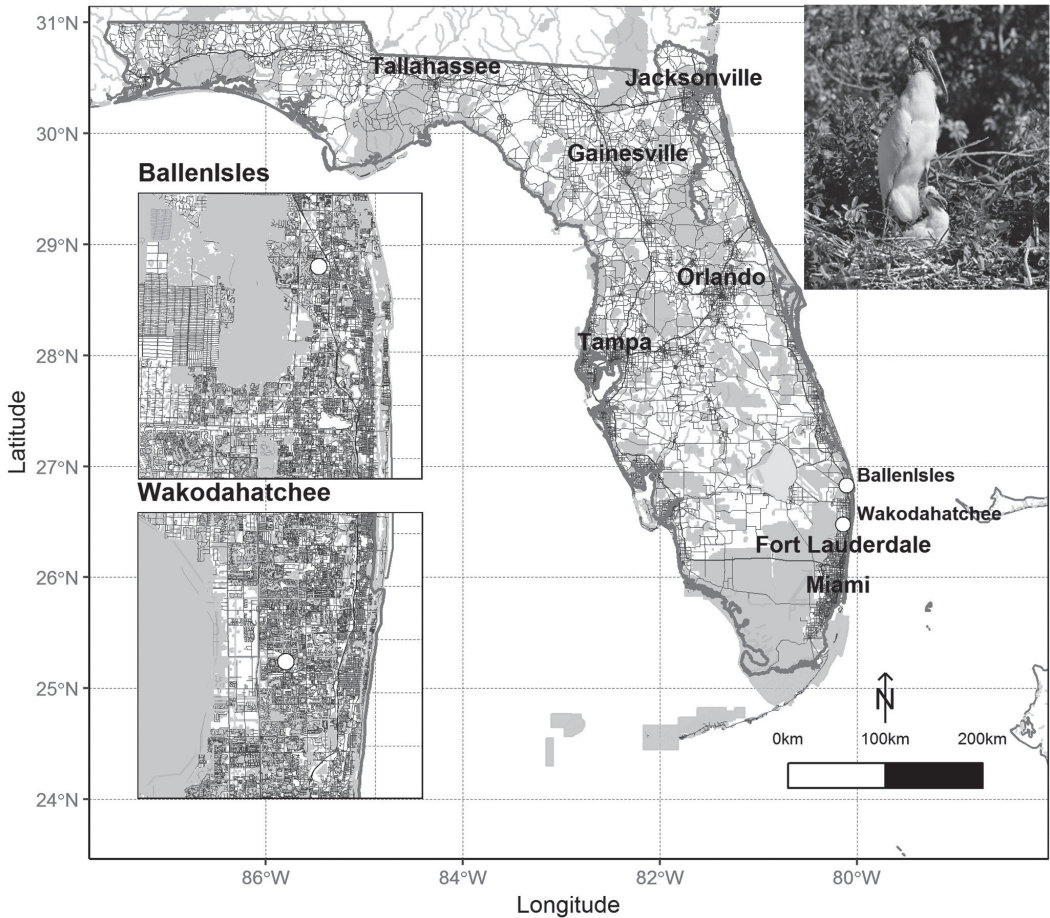
ments of the chicks are at their peak, leaving the nest unattended (Kahl 1962). Nestling Wood Storks remain in nests for 50 to 60 days before fledging (Kahl 1971; Coulter *et al.* 1999) and continue to return to nests to be fed by their parents for another one to three weeks (Kahl 1971; Borkhataria *et al.* 2012).

The trade-off between nest attendance and food provisioning has been noted in many species of birds (Komdeur and Kats 1999; Fontaine and Martin 2006; Tilgar *et al.* 2010). A key assumption in this trade-off is that nest attendance is related to nest success, through several mechanisms, such as direct care for chicks and defense of nest against predators and conspecifics (Giese 1996; Schmidt and Whelan 2005). To our knowledge, no study has investigated the relationship between parental care (measured as frequency of foraging trips, their duration, and nest attendance) and reproductive success in Wood Storks, but this has been studied in other wading birds (Miller and Burger 1978); likewise, the importance of parental attendance during the nestling period has been little studied in this group. Thus, our objective was to determine if parental care (nest attendance and foraging behavior) varies during the nesting season and, if so, if such variation affects reproductive success. We predicted that the number of parental foraging trips would increase with the age of chicks, and the mean duration of foraging trips would decrease. We also predicted a positive relationship between number of foraging trips and reproductive success. Second, we assessed a possible relationship between the time spent by parents at the nest and the occurrence of takeover events. We predicted that the percentage of time spent at the nest simultaneously by both parents would reduce the likelihood of takeovers.

## METHODS

### Study Area

We collected data on parental activities of 85 pairs of Wood Storks on 61 nests (some pair lost nests due to takeovers and abandoned nests) in two colonies in Palm Beach County, Florida, USA (Fig. 1). We ob-



**Figure 1.** Location of Wood Stork (*Mycteria americana*) study colonies (white circles) in Palm Beach County, Florida, USA. Protected and natural areas are presented in light gray; roads and interstates as grey and black lines, respectively. Inset shows an adult Wood Stork attending its nest with a three-week-old nestling.

served 32 nests on two islands located within the Wakodahatchee Wetlands ( $26^{\circ} 47' 87''$  N,  $80^{\circ} 14' 34''$  W), nesting on pond apple (*Annona glabra*), dahoon holly (*Ilex cassine*), and sabal palm (*Sabal palmetto*) (Bays *et al.* 2000). We also monitored 29 nests in pond apple and sabal palm in the BallenIsles Country Club, situated on a single island within a golf club ( $26^{\circ} 83' 01''$  N,  $80^{\circ} 10' 91''$  W), located 46.6 km north of Wakodahatchee Wetlands (Fig. 1). It is important to note that Palm Beach County and the large adjacent protected marsh lands (including Loxahatchee National Wildlife Refuge) are a hotspot for the year-round distribution of resident Wood Storks, which may indicate that foraging habitat is generally good in this area (Picardi *et al.* 2020). The 2017 breeding season in Palm Beach County was characterized by lower precipitation (2.68 mm in January and February, 5.26 mm in March through May) than the long-term average (9.33 mm for December through February 1981-2010, 12.76 mm for March-May 1981-2010; data from the National Oceanic and Atmospheric Administration).

#### Data Collection

We observed breeding behavior in the two colonies from 31 January-2 June 2017. Two observers conducted separate 5-h-long surveys biweekly at each colony, once in the morning (07:30 hr to 12:30 hr) and once in the afternoon (12:30 hr to 17:30 hr), as to homogenize time gaps between successive surveys at a single site (every 3.5 days, Monday morning and Thursday afternoon at BallenIsles, Tuesday morning and Friday afternoon at Wakodahatchee Wetlands). At each site, two groups of nests were observed in weekly alternation by both observers to prevent observer bias. Wood Stork behavior was observed using binoculars (12×50) and recorded using an SLR camera with a 600-mm telephoto lens. We began data collection when most pairs of Wood Storks were either building nests or beginning to incubate eggs. We identified each individual Wood Stork based on individually unique skin patterns on their head (Clark 1980; Bryan and Coulter 1991). We built a photographic database for individual identification consist-

ing of photos of the right and left profile of each stork. Because Wood Storks lack evident sexual dimorphism, sexing partners of a pair was only possible when we witnessed copulation (Clark 1980; Fujioka and Yamagishi 1981; Bryan and Coulter 1991).

At the beginning of each survey, we recorded the status of each nest (construction, incubation, or post-hatching, and if individual parents present), took pictures of the individuals present, and recorded arrivals and departures. Identification was always made later using the photo database. The takeovers were either observed directly or inferred from the data showing the presence of different adults in the nest. A takeover can be carried out by a single individual or by a pair who are seizing an already built nest. This may result in the cessation of egg incubation or the death of the original pair's chicks present in the nest at the time of the takeover. Trips were categorized as foraging or gathering nest-building material based on whether the parents regurgitated food to nestlings upon return or brought back twigs and other woody material, respectively. Trips were initially classified as unknown when parents neither fed nor carried nest material when returning. We found that 96% of foraging trips (showing regurgitation) lasted more than 44 min. Using that information, we categorized any unknown trips longer than 44 min as foraging trips. Laying dates for each nest were estimated by back-dating from hatching dates, using an average incubation period of 28 days (Rodgers and Schwikert 1997) and were matched to observations of parental brooding behavior (especially sitting position). We counted hatchlings in each nest where visual counting was feasible. We estimated reproductive success at each nest as the proportion of chicks (ratio of fledglings to hatchlings) still alive after 8 weeks, i.e., the estimated time when young birds leave the nest for the first time (Middleton and Prigoda 2001; Bryan *et al.* 2005). We determined early and late pairs according to their nesting date. Most pairs (48 out of 61) initiated nesting within the first week of study, before 8 February 2017, and were considered early nesters. A second wave initiated nesting between 20 February and 21 April 2017, and were considered late nesters.

#### Analytical Methods - Changes in Frequency and Duration of Foraging Trips

We modeled both frequency and duration of foraging trips as non-linear functions of weeks-since-hatching using generalized linear mixed models (Mirman 2014). The overall shape of the curve was captured with inclusion of orthogonal polynomials on time up to the fourth order, with individual-within-nest random effects on all terms (for frequency only; for the duration analysis, the use of complete trips with known time of departure and arrival limited the sample size, and the estimation of random effects was not possible). Using a subset of individuals of known sex, sex differences were tested with the inclusion of an additive and multiplicative fixed effect of sex. Similarly, we included an additive and multiplicative fixed effect of the calendar date of nest initiation to test its effect on frequency and duration of foraging trips.

#### Effect of Frequency of Foraging Trips on Reproductive Success

The effect of frequency of foraging trips on reproductive success was assessed using a logistic regression on the ratio of fledglings to hatchlings in each nest (at 8 weeks after hatching). Fixed effects of the frequency of foraging trips during the early pre-flight stage (weeks 1-4) and during the late pre-flight stage (weeks 5-8) were included in the regression, after checking for their correlation. We have not reported results for the post-flight stage because the data were not sufficient to constitute a robust data set. In fact, at the end of the young's development (between 9 and 12 weeks), parents return very little to the nest to feed them. It happened several times that the parents did not return to the nest during the 5.5 hours of observation.

#### Nest Attendance and Risk of Takeover

We fit semi-parametric proportional hazards (SPPH) models to the time spent by parents at the nest prior to takeovers, expressed either as a function of calendar time or time within the nest cycle. The instantaneous risk of successful takeover of a nest at a given week was modeled as a function of the baseline hazard experienced by all individuals, and the proportion of time with at least one adult or two adults present at the nest during the week. In the semi-parametric approach, weak assumptions about the baseline hazard are made, allowing the estimation of the relative risk of takeover. Covariate effects are then estimated using a partial likelihood that does not require estimating the baseline hazard.

All statistical analyses were performed in the software R 3.3.0 (R Core Team 2017) using notably the packages "lme4" (version 1.1.13; Bates *et al.* 2015), "survival" (version 2.40.1; Therneau and Grambsch 2000), and "cowplot" for graphs (version 0.7.0; Wilke 2016).

## RESULTS

### Wood Stork Monitoring

Between 31 January and 2 June 2017, we monitored 61 nests (29 in BallenIsles, and 32 in Wakodahatchee Wetlands), corresponding to 85 nesting attempts from individually identifiable pairs of Wood Stork (with sex identified for individuals of 71 pairs). Of these nest attempts, 27 were taken over by another pair, five were abandoned, and 53 either succeeded or were still active at the end of data collection (Fig. 2). Among surviving nests, we were able to track the fate of chicks until fledging for 29 nest attempts (see Table 1). For the other nest attempts, we were not able to track the fate of chicks

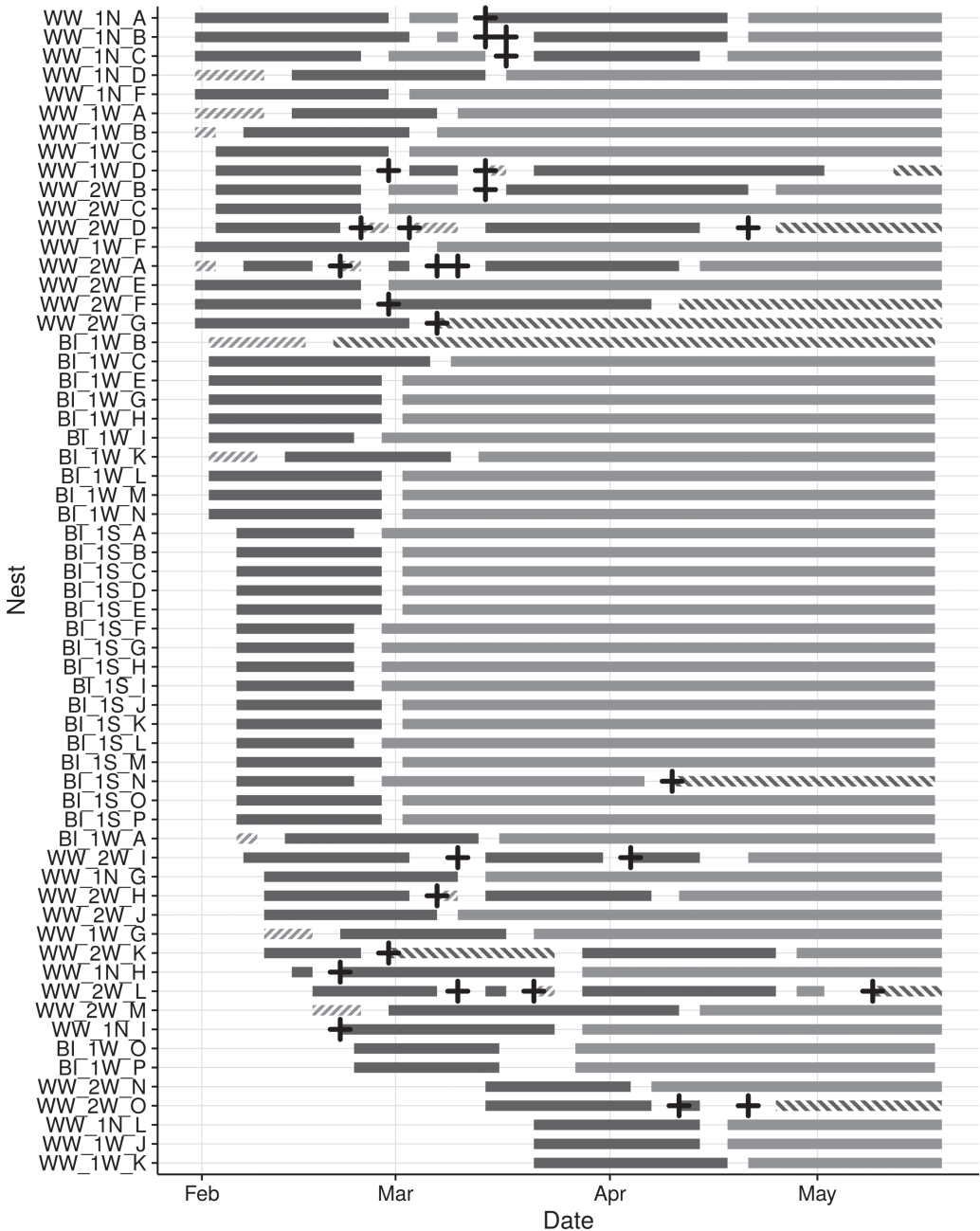


Figure 2. Evolution of nest status ( $n = 61$ ) during the nesting season in Wood Stork (*Mycteria Americana*). Color indicates the phases of each nest: Building phase (striped light gray), Incubation phase (dark gray), Post-hatching phase (light gray), Abandoned (striped dark gray). Nest takeovers ( $n = 27$ ) are indicated by black crosses.

until fledging due to either takeover, death of chicks, abandoned nest or the end of the observation period. We found an average of  $3.00 \pm 0.46$  SD hatchlings per nest, and an average of  $2.59 \pm 0.57$  SD chicks fledged per

nest. We obtained a total of 70 5-h-long nest observations, and observations from the two sites were similar. For instance, comparing the two sites we obtained an average foraging rate of  $0.243 \text{ h}^{-1}$  for BallenIsles Country

**Table 1. Reproductive success for 29 Wood Stork (*Mycteria Americana*) nests with known outcome in Palm Beach County, Florida, USA: Number of nests broken down by the number of chicks per nest at the time of hatching (rows) and at the time of fledging (columns).**

# Hatchlings	# Fledglings			# Nests
	1	2	3	
2	1	2	0	3
3	0	5	18	23
4	0	3	0	3
Total	1	10	18	29

Club versus 0.239 h<sup>-1</sup> for Wakodahatchee Wetlands. Moreover, the pairs with the highest chick survival were those with the highest mean frequency of foraging trips per hour in each site. We thus pooled both colonies to increase robustness of our results.

#### Changes in Frequency and Duration of Foraging Trips

Adding orthogonal polynomials successively to the constant model of frequency of foraging trip significantly improved the fit until the quadratic term ( $\chi^2(7) = 14.792$ ,  $P = 0.039$ ; Table 2A), whereas adding a cubic or quartic term did not further improve

the fit further (resp.  $\chi^2(1) = 1.011$ ,  $P = 0.315$ ;  $\chi^2(6) = 0.607$ ,  $P = 0.436$ ; Table 2A). Using the quadratic model as a baseline, model selection revealed that an additive or multiplicative effect of either sex (Table 2B) or initiation date (Table 2C) did not significantly improve the fit (Table 2B). The model including the effect of first- and second-order polynomials was kept for the rest of analyses (Table 3). This model showed a significant effect of the first-order orthogonal polynomial term ( $0.225 \pm 0.06$ ,  $t_{910} = 13.501$ ,  $P < 0.001$ ; Table 3) demonstrating a positive linear relationship between the frequency of foraging trips and the progression of chick development (Fig. 3A).

Adding orthogonal polynomials to the constant model of duration of foraging trip did not significantly improve the fit (all  $P > 0.05$ ; Table 4A), although the first-order polynomial was close to statistical significance ( $F_{1,155} = 3.612$ ,  $P = 0.059$ ; Table 4A). We thus simplified the baseline foraging duration model as a simple linear model including a main effect of the number of weeks since hatching. Using the simple linear model as a baseline, model selection then showed that the additive or multiplicative

**Table 2. Model selection for frequency of foraging trips by Wood Storks (*Mycteria Americana*) relative to sex of individual adults and nest initiation date.  $K$  = number of parameters in the model; AIC = Akaike Information Criterion score; LL = log-likelihood; and  $\chi^2$ , df and  $P (>\chi^2)$  indicates the statistic, the associated degrees of freedom and  $P$ -value for the comparison between each model and the previous one (selected model is indicated in bold).**

General shape						
Model	K	AIC	LL	$\chi^2$	df	$P (>\chi^2)$
Constant	4	-1197.7	602.83			
First-order polynomial	9	-1447.3	732.67	259.679	5	<0.001
<b>Second-order polynomials</b>	<b>16</b>	<b>-1448.1</b>	<b>740.07</b>	<b>14.792</b>	<b>7</b>	<b>0.039</b>
Third-order polynomials	17	-1447.1	740.57	1.011	1	0.315
Fourth-order polynomials	18	-1445.8	740.87	0.607	1	0.436
Sex effect						
Model	K	AIC	LL	$\chi^2$	df	$P (>\chi^2)$
<b>Baseline</b>	<b>16</b>	<b>-611.00</b>	<b>321.50</b>			
Sex (additive)	17	-609.86	321.93	0.858	1	0.354
Sex (multiplicative)	19	-607.32	322.66	1.463	2	0.481
Effect of the start date of nesting						
Model	K	AIC	LL	$\chi^2$	df	$P (>\chi^2)$
<b>Baseline</b>	<b>16</b>	<b>-1448.1</b>	<b>740.07</b>			
Start (additive)	17	-1446.7	740.35	0.576	1	0.448
Start (multiplicative)	19	-1448.2	743.10	5.503	2	0.064

**Table 3. Coefficients and their significance of the best model for the frequency of foraging trips during the post-hatching phase in Wood Stork (*Mycteria Americana*).**

Variable	Estimate	Std Error	df	<i>t</i>	<i>P</i> (>  <i>t</i>  )
Intercept	0.225	0.006	47.1200	38.064	<0.001
First-order polynomial	1.887	0.1403	42.630	13.501	<0.001
Second-order polynomial	0.034	0.128	67.220	0.265	0.792

effect of sex (Table 4B) and initiation date (Table 4C) did not significantly improve the fit. The simple linear model including no effect of sex or start time of nesting was thus kept for the rest of analyses, and indicated a weak trend of decreasing duration of foraging trips through time since hatching ( $-2.629 \pm 1.388$ ,  $t_{27} = -1.893$ ,  $P = 0.060$ ; Table 5; Fig. 3B).

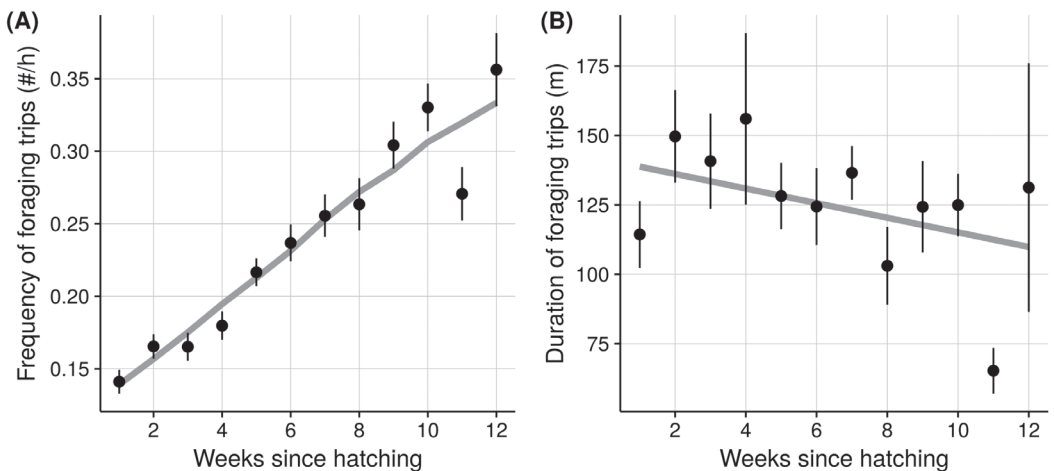
#### Effect of Frequency of Foraging Trips on Reproductive Success

We divided the post-hatching phase into three stages: early pre-flight (weeks 1-4 post-hatching), late pre-flight (weeks 5-8) and post-flight (weeks 9-12; Clark 1980). The frequency of foraging trips increased during each stage of chick development. However, the effect of the frequency of foraging trips on reproductive success was not significant during the early pre-flight stage (weeks 1-4;  $Z = 1.025$ ;  $P = 0.306$ ; Table 6). Frequency of

foraging trips during the late pre-flight stage had a significant positive effect on reproductive success ( $Z = 2.929$ ;  $P = 0.003$ ; Table 6; Fig. 4). The frequency of foraging trips had no effect on the absolute number of fledglings ( $Z = 1.035$ ;  $P = 0.438$ ). Pairs with the highest chick survival ( $P = 1$ ) were those with the highest mean frequency of foraging trips per hour (0.25 to 0.35  $\text{h}^{-1}$ ), whereas pairs with the lowest chick survival ( $P = 0.5$ ) had the lowest mean frequency of foraging trips per hour (0.12 to 0.16  $\text{h}^{-1}$ ). The mean frequency of foraging trips during the early and late pre-flight stages were not correlated ( $r = 0.216$ ,  $t_{27} = 1.148$ ,  $P = 0.261$ ).

#### Nest Attendance and Risk of Takeover

Both adults of each pair were simultaneously present at nests more than half of the time during nest building and the first week of incubation, but this proportion declined rapidly during incubation (Fig. 5A). Until



**Figure 3. Frequency (A) and duration (B) of foraging trips through time during the post-hatching nesting phase in Wood Stork (*Mycteria Americana*) ( $n = 157$  5h-long nest observations;  $r^2 = 0.22$  and  $r^2 = 0.02$ , respectively). Points represent average values for each week since hatching  $\pm$  SE, and the light gray line represents the best model fit (see text for details).**



**Table 4. Model selection for duration of foraging trips by Wood Storks (*Mycteria Americana*) relative to sex of individual adults and nest initiation date. SSR and SSE are the residual and explained sums of squares, respectively, with their associated degrees of freedom; *F* and *P* (>*F*) indicate the statistic and *P*-value for the comparison between each model and the previous one (selected model is indicated in bold).**

General shape						
Model	SSR	df	SSE	df	<i>F</i>	<i>P</i> (> <i>F</i> )
<b>Constant</b>	<b>502825</b>	<b>156</b>				
First-order polynomial	491459	155	11366.4	1	3.6	0.059
Second-order polynomials	487172	154	4286.4	1	1.362	0.245
Third-order polynomials	481410	153	5762.2	1	1.831	0.178
Fourth-order polynomials	478286	152	3124.5	1	0.993	0.320
Sex effect						
Model	SSR	df	SSE	df	<i>F</i>	<i>P</i> (> <i>F</i> )
<b>Baseline</b>	<b>236086</b>	<b>69</b>				
Sex (additive)	234611	68	1475.0	1	0.427	0.516
Sex (multiplicative)	231545	67	3066.5	1	0.887	0.350
Effect of the start date of nesting						
Model	SSR	df	SSE	df	<i>F</i>	<i>P</i> (> <i>F</i> )
<b>Baseline</b>	<b>491459</b>	<b>155</b>				
Start (additive)	488720	154	2738.7	1	0.872	0.352
Start (multiplicative)	480680	153	8040.3	1	2.559	0.112

the beginning of the early pre-flight stage, at least one adult was constantly at the nest. Then, the presence of even one adult gradually decreased, reaching a minimum of 10% of the time at the end of the nesting season (Fig. 5A). In our study, 32% of nests experienced a takeover. Of the 27 takeovers, the vast majority took place in Wakodahatchee Wetlands (26) vs. only 1 in BallenIsles. Most takeovers occurred between 13 February to 19 March 2017 (Fig. 5B). We found that the amount of time with presence of at least one parent at the nest did not significantly affect risk of successful takeovers ( $e^{\beta} = 1.030$ ,  $Z = 1.289$ ;  $P = 0.197$ ; Table 7), and the amount of time with both parents present at the nest had a significant positive effect (increased risk) on successful takeovers ( $e^{\beta} = 1.017$ ;  $Z = 2.506$ ;  $P = 0.012$ ; Table 7). Similarly, the date of initiation of incubation

had a positive effect on the risk of takeovers, with later initiation dates associated with higher risk ( $e^{\beta} = 2.135$ ;  $Z = 1.971$ ;  $P = 0.048$ ; Table 7; Fig. 5C).

## DISCUSSION

We found that the mean frequency of foraging trips per hour showed a gradual increase in time with the developmental stage of chicks. However, our sample of chicks in the post-flight stage was small and highly variable among different pairs, thus limiting our inference during the final stage. The duration of foraging trips was not influenced by the developmental stage of chicks. These results are in general agreement with those of previous studies of Wood Storks (Clark 1980; Bryan *et al.* 1995, 2005). Parents meet

**Table 5. Coefficients and their significance of the best model for the duration of foraging trips during the post-hatching phase in Wood Stork (*Mycteria Americana*).**

Variable	Estimate	Std Error	<i>t</i>	<i>P</i> (>  <i>t</i>  )
Intercept	141.384	9.442	14.974	<0.001
Time since hatching	-2.629	1.388	-1.893	0.060

**Table 6. Coefficients and their significance of the logistic model for reproductive success ratio in Wood Stork (*Mycteria Americana*).**

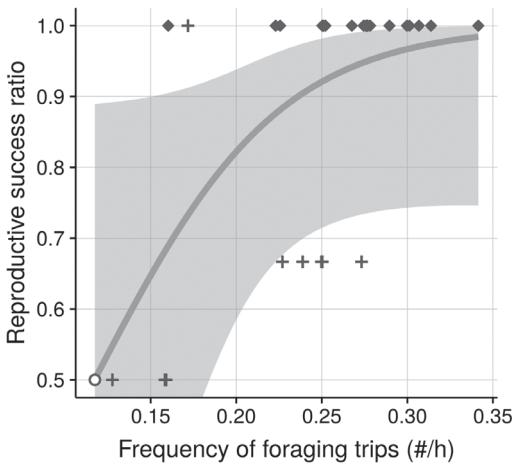
Variable	Estimate	Std. Error	Z	P (> Z )
Intercept	-3.481	1.593	-2.185	0.029
Early stage	8.527	8.320	1.025	0.306
Late stage	17.828	6.086	2.929	0.003

the increased energetic needs of chicks (Kahl 1962) by increasing the number rather than the duration of foraging trips (Bryan *et al.* 1995). During the post-hatching phase, the mean frequency of foraging trips per hour and their duration were not different between the sexes, and were not related to the onset date of incubation. Whether or not the duration of foraging trips is always stable as chicks grow is unclear, but may depend on the mosaic of wetland conditions in the area surrounding the colony (Coulter and Bryan 1993; Bryan *et al.* 1995). The dry season was not interrupted by major rainfall events that could reverse gradual water dry-down, and this resulted in good conditions for Wood Stork foraging in our study area (Kushlan 1986; Botson *et al.* 2016).

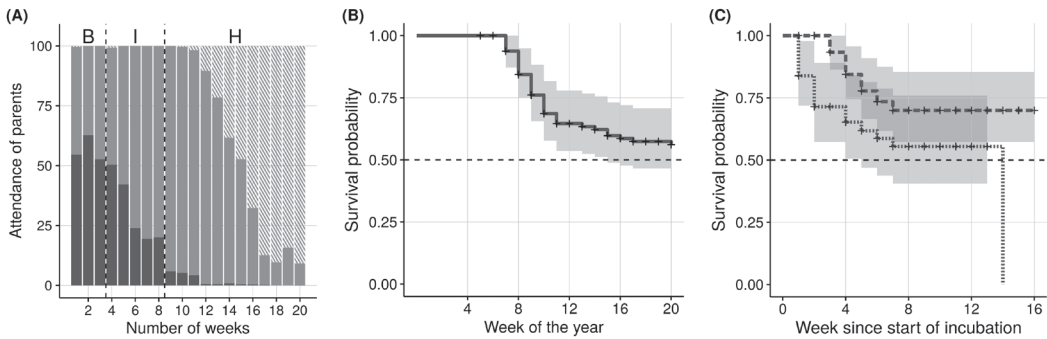
We found that the mean rate of foraging trips in the late pre-flight stage, but not in

the early pre-flight stage, affected the proportion of chicks that fledged. Although our results showed that pairs with the highest chick survival were those with the highest mean frequency of foraging trips per hour, and that pairs with the lowest chick survival had the lowest mean frequency of foraging trips per hour, it is important to note the possible circularity of this relationship: in fact, one could argue that pairs that reached the late pre-flight stage with an already reduced brood size consequently decreased the frequency of trips due to reduced demands from the offspring, rather than the other way around. However, our results show that the relationship between reproductive success and frequency of foraging trips is independent of the absolute number of fledglings. For example, pairs with two successful chicks but low fledging success had either higher (0.23-0.28 h<sup>-1</sup> for success ratio of 0.67, see Fig. 2) or lower (0.13-0.16 h<sup>-1</sup> for success ratio of 0.5, see Fig. 4) foraging trip frequency than those with 100 % success ratio (0.17-0.23 h<sup>-1</sup>, see Fig. 4). If the absolute number of chicks was driving the frequency of foraging trips, we would expect the same frequency for an equal number of chicks independently from the initial brood size. This result supports an effect of foraging trip frequency in determining chick survival ratio, and not vice-versa. Because we found no effect of the frequency of foraging trips on the absolute number of fledglings, fledging success is apparently determined by other factors, such as mortality related to predation, sibling competition, or disturbance, as well as factors affecting clutch size (Burger 1982; Rodgers 1987; Bouton *et al.* 2005).

Takeover behavior appears to be widespread in Wood Storks, where it may affect more than a third of pairs in a colony (Bryan and Coulter 1991). In our study,



**Figure 4. Reproductive success ratio (fledglings/hatchlings) as a function of frequency of foraging trips in late pre-flight nesting stage in Wood Stork (*Mycteria Americana*) (n = 29 5h-long nest observations; r<sup>2</sup> = 0.43). The shape of dots indicates the number of fledglings in each nest (diamond = 3; cross = 2; circle = 1) and the line indicates the logistic fit (with 95% confidence interval).**



**Figure 5.** Nest attendance (A) by adult Wood Storks (*Mycteria Americana*) through time ( $n = 79$  pairs). The color indicates nest attendance of two adults (dark gray), one adult (light gray) or no adults (striped light gray) (B: building phase; I: incubation phase; H: post-hatching phase). Kaplan-Meier survival curve (with confidence interval) for the risk of nest takeovers in 79 Wood Stork nests as a function of the week of the year (B) or week since start of incubation (C). Colors further distinguish between early pairs (dashed lined, top) and late pairs (dotted line, bottom).

32% of nests experienced a takeover. The risk of a takeover was more than double for late pairs (nest initiation after 13 February). The lower occurrence of takeovers for early pairs could be explained by better intrinsic characteristics of individuals (Johnson and Kermott 1990) such as larger size, higher energy reserves, greater aggressiveness, or higher social status (i.e. dominance hierarchy rank). We also found that the time of simultaneous nest attendance by both parents did not reduce the occurrence of takeovers. On the contrary, and surprisingly, pairs with greater nest attendance times by both individuals had a greater chance of undergoing a takeover. Because Bryan and Coulter (1991) found that all takeovers occurred when a single individual was present at a nest, we expected that pairs that spent more time together at the nest would have a lower chance of getting their nest taken over, but, instead, we found that the presence of both individuals was associated with a greater risk of undergoing a takeover. Pairs may increase joint attendance when their perceived risk

of attack is greater, but we have no data to test this possible explanation. In any case, increased parental attendance did not result in reduced risk of nest failure, suggesting that there may not be a clear trade-off between attendance and time spent foraging. Perhaps attendance of both parents at the nest does not provide appropriate protection against takeovers, and body condition of parents may be a determining factor as shown in the study by Meathrel *et al.* (1993) in Short-tailed Shearwaters.

Wood Storks have long breeding cycles (~110 days), and are often limited by food availability at the end of the dry season (Kushlan *et al.* 1975). Our results suggest that the frequency of foraging trips during the late pre-flight stage is positively associated with the reproductive success of Wood Storks. To our knowledge, this is the first time a link is established between parental effort and reproductive success for this species. Moreover, our findings highlighted an important mechanism of nest failure, nest takeovers, and that the risk associated with it

**Table 7.** Coefficients and their significance of the semi-parametric proportional hazards (SPPH) model applied to the risk of takeovers of Wood Stork (*Mycteria Americana*) nests. Exponentiated coefficients can be interpreted as multiplicative effects on the hazard, i.e. the instantaneous risk of takeover, holding other covariates constant. For instance, late starters have a risk more than twice as high as early starters ( $e^{\beta} = 2.135$ ).

Variable	$\beta$	$e^{\beta}$	Std. Error	Z	P (> Z )
Presence $\geq 1$ adult	0.029	1.030	0.023	1.289	0.197
Presence 2 adults	0.017	1.018	0.007	2.506	0.012
Late-starters	0.759	2.135	0.385	1.971	0.049

varies throughout the season. Thus, in addition to constraints related to seasonal water level fluctuations, a late initiation of nesting can be associated with low reproductive success due to a higher probability of takeover events. It is important to point out that we have one season of data and that the reproductive success of Wood Stork is primarily related to prey availability in the environment (Ogden 1994; Griffin *et al.* 2008). This food availability is important for the development of chicks until fledging. Thus, a study carried out over several breeding seasons in the same location could provide more accurate breeding estimates, since foraging conditions are a dynamic system component.

#### ACKNOWLEDGMENTS

We are grateful to Gary Myers and the management office of BallenIsles Country Club and to Robert Nelton and the Palm Beach County Water Utilities Department for granting access to their premises. Gary Ritchison provided valuable feedback on an earlier version of this manuscript, as did two anonymous reviewers. This work was supported by the USDA National Institute of Food and Agriculture (Hatch project 1009101).

#### LITERATURE CITED

- Bates, D., M. Maechler, B. Bolker and S. Walker. 2015. Fitting linear mixed-effects models using lme4. *Journal of Statistical Software* 67: 1-48.
- Bays, J., G. Dernlan, H. Hadjimiry, K. Vaith and C. Keller. 2000. Treatment wetlands for multiple functions: Wakodahatchee Wetlands, Palm Beach County, Florida. *Proceedings of the Water Environment Federation* 2000: 15-37.
- Beerens, J. M., P. C. Frederick, E. G. Noonburg and D. E. Gawlik. 2015. Determining habitat quality for species that demonstrate dynamic habitat selection. *Ecology and evolution* 5: 5685-5697.
- Boland, C. R., R. Heinsohn and A. Cockburn. 1997. Experimental manipulation of brood reduction and parental care in cooperatively breeding white-winged coudons. *Journal of Animal Ecology* 66: 683-691.
- Borkhataria, R. R., P. C. Frederick, R. A. Keller and J. A. Collazo. 2012. Temporal variation in local wetland hydrology influences postdispersal survival of juvenile Wood Storks (*Mycteria americana*). *Auk* 129: 517-528.
- Botson, B. A., D. E. Gawlik and J. C. Trexler. 2016. Mechanisms that generate resource pulses in a fluctuating wetland. *PLoS one* 11: e0158864.
- Bouton, S. N., P. C. Frederick, C. D. Rocha, A. T. Barbosa Dos Santos and T. C. Bouton. 2005. Effects of tourist disturbance on Wood Stork nesting success and breeding behavior in the Brazilian Pantanal. *Waterbirds* 28: 487-497.
- Bryan, A. L. and M. C. Coulter. 1987. Foraging flight characteristics of Wood Storks in east-central Georgia, USA. *Colonial Waterbirds* 10: 157-161.
- Bryan, A. L. and M. C. Coulter. 1991. Conspecific aggression in a Wood Stork colony in Georgia. *Wilson Bulletin* 103: 693-697.
- Bryan, A. L., M. C. Coulter and C. J. Pennycuik. 1995. Foraging strategies and energetic costs of foraging flights by breeding Wood Storks. *Condor* 97: 133-140.
- Bryan, A. L., J. W. Snodgrass, J. R. Robinette and L. B. Hopkins. 2005. Parental activities of nesting Wood Storks relative to time of day, tide level and breeding stage. *Waterbirds* 28: 139-145.
- Bryan, A. L. and J. R. Robinette. 2008. Breeding success of Wood Storks nesting in Georgia and South Carolina. *Waterbirds* 31: 19-24.
- Burger, J. 1982. An overview of proximate factors affecting reproductive success in colonial birds: concluding remarks and summary of panel discussion. *Colonial Waterbirds* 5: 58-65.
- Burger, J., J. A. Rodgers and M. Gochfeld. 1993. Heavy metal and selenium levels in endangered wood storks *Mycteria americana* from nesting colonies in Florida and Costa Rica. *Archives of Environmental Contamination and Toxicology* 24: 417-420.
- Clark, E. S. 1979. Factors affecting the initiation and success of nesting in an East-Central Florida Wood Stork colony. *Proceedings of the Colonial Waterbird Group* 2: 178-188.
- Clark, E. S. 1980. The attentiveness and time budget of a pair of nesting Wood Storks. *Proceedings of the Colonial Waterbird Group* 3: 204-215.
- Cockburn, A. 2006. Prevalence of different modes of parental care in birds. *Proceedings of the Royal Society B* 273: 1375-1383.
- Coulter, M. C. and A. L. Bryan. 1993. Foraging ecology of wood storks (*Mycteria americana*) in East-Central Georgia: Characteristics of foraging sites. *Colonial Waterbirds* 16: 59-70.
- Coulter, M. C. and A. L. Bryan. 1995. Factors affecting reproductive success of Wood Storks (*Mycteria americana*) in East-Central Georgia. *Auk* 112: 237-243.
- Coulter, M. C., J. A. Rodgers, J. C. Ogden and F. C. Depkin. 1999. Wood Stork. Pages 1-28 in *The Birds of North America*, No. 409 (A. Poole, and F. Gill, Eds.). The Birds of North America, Inc., Philadelphia, Pennsylvania, USA.
- Del Hoyo, J., A. Elliott and J. Sargatal (Eds.). 1992. *Handbook of the Birds of the World: Ostrich to Ducks*, Volume 1. Lynx Edicions, Barcelona, Spain.
- Dijkstra, C., A. Bult, S. Bijlsma, S. Daan, T. Meijer and M. Zijlstra. 1990. Brood size manipulations in the kestrel (*Falco tinnunculus*): effects on offspring and parent survival. *Journal of Animal Ecology* 59: 269-285.
- Eggert, A. K., M. Reinking and J. K. Müller. 1998. Parental care improves offspring survival and growth in burying beetles. *Animal Behaviour* 55: 97-107.

- Elowe, K. D. and W. E. Dodge. 1989. Factors affecting black bear reproductive success and cub survival. *Journal of Wildlife Management* 53: 962-968.
- Erikstad, K. E., M. Asheim, P. Fauchald, L. Dahlhaug, T. Tveraa and P. Dahlhaug. 1997. Adjustment of parental effort in the puffin; the roles of adult body condition and chick size. *Behavioral Ecology and Sociobiology* 40: 95-100.
- Fleming, W. J., J. A. Rodgers and C. J. Stafford. 1984. Contaminants in Wood Stork eggs and their effects on reproduction, Florida, 1982. *Colonial Waterbirds* 7: 88-93.
- Fontaine, J. J. and T. E. Martin. 2006. Parent birds assess nest predation risk and adjust their reproductive strategies. *Ecology Letters* 9: 428-434.
- Frederick, P. C. and M. W. Collopy. 1989. Nesting success of five Ciconiiform species in relation to water conditions in the Florida Everglades. *Auk* 106: 625-634.
- Fujioka, M. and S. Yamagishi. 1981. Extramarital and pair copulations in the Cattle Egret. *Auk* 98: 134-144.
- Giese, M. 1996. Effects of human activity on Adelie penguin *Pygoscelis adeliae* breeding success. *Biological Conservation* 75: 157-164.
- Griffin, G., J. Morris, J. Rodgers and B. Snyder. 2008. Changes in Wood Stork (*Mycteria americana*) nesting success observed in four Florida bird colonies during the 2004, 2005, and 2006 breeding seasons. *Acta Zoologica Academiae Scientiarum Hungaricae* 54: 123-130.
- Harrison, F., Z. Barta, I. Cuthill and T. Székely. 2009. How is sexual conflict over parental care resolved? A meta-analysis. *Journal of Evolutionary Biology* 22: 1800-1812.
- Hébert, P. N. and R. M. Barclay. 1988. Parental investment in Herring Gulls: clutch apportionment and chick survival. *Condor* 90: 332-338.
- Johnson, L. S. and L. H. Kermott. 1990. Possible causes of territory takeovers in a north-temperate population of House Wrens. *Auk* 107: 781-784.
- Kahl, M. P. 1962. Bioenergetics of growth in nestling Wood Storks. *Condor* 64: 169-183.
- Kahl, M. P. and L. J. Peacock. 1963. The bill-snap reflex: a feeding mechanism in the American Wood Stork. *Nature* 199: 505.
- Kahl, M. P. 1964. Food ecology of the Wood Stork (*Mycteria americana*) in Florida. *Ecological Monographs* 34: 97-117.
- Kahl, M. P. 1971. Comparative ethology of the Ciconiidae. The Wood-Storks (genera *Mycteria* and *Ibis*). *Ibis* 114: 15-29.
- Komdeur, J. and R. K. Kats. 1999. Predation risk affects trade-off between nest guarding and foraging in Seychelles Warblers. *Behavioral Ecology* 10: 648-658.
- Kushlan, J. A., J. C. Ogden, and A. L. Higer. 1975. Relation of water level and fish availability to wood stork reproduction in the southern Everglades, Florida. U.S. Geological Survey Open File Rep: 75-434.
- Kushlan, J. A. 1986. Responses of wading birds to seasonally fluctuating water levels: strategies and their limits. *Colonial Waterbirds* 9: 155-162.
- Meathrel, C. E., J. S. Bradley, R. D. Wooller and I. J. Skira. 1993. The effect of parental condition on egg-size and reproductive success in Short-tailed Shearwaters *Puffinus tenuirostris*. *Oecologia* 93: 162-164.
- Middleton, A. L. and E. Prigoda. 2001. What does 'fledging' mean?. *Ibis* 143: 296-298.
- Miller, L. M. and J. Burger. 1978. Factors affecting nesting success of the Glossy Ibis. *Auk* 95: 353-361.
- Mirman, D. 2014. Growth Curve Analysis and Visualization using R. Chapman and Hall/CRC, Boca Raton, Florida, USA.
- Moreno, J., J. P. Veiga, P. J. Cordero and E. Mínguez. 1999. Effects of paternal care on reproductive success in the polygynous Spotless Starling *Sturnus unicolor*. *Behavioral Ecology and Sociobiology* 47: 47-53.
- Mutzel, A., M. P. Blom, F. Spagopoulou, J. Wright, N. J. Dingemans and B. Kempenaers. 2013. Temporal trade-offs between nestling provisioning and defence against nest predators in Blue Tits. *Animal behaviour* 85: 1459-1469.
- Ogden, J. C., J. A. Kushlan and J. T. Tilmant. 1976. Prey selectivity by the Wood Stork. *Condor* 78: 324-330.
- Ogden, J. C. and S. A. Nesbitt. 1979. Recent Wood Stork population trends in the United States. *Wilson Bulletin* 91: 512-523.
- Ogden, J. C. 1994. A comparison of wading bird nesting colony dynamics (1931-1946 and 1974-1989) as an indication of ecosystem conditions in the southern Everglades. Pages 533-570 in *Everglades: The Ecosystem and Its Restoration*. St. Lucie Press, Boca Raton, Florida, USA.
- Picardi, S., P. C. Frederick, R. R. Borkhataria, and M. Basille. 2020. Partial migration in a subtropical wading bird in the southeastern United States. *Ecosphere* 11: e03054.
- Ramo, C. and B. Busto. 1992. Nesting failure of the Wood Stork in a neotropical wetland. *Condor* 94: 777-781.
- R Core Team. 2017. R: A language and environment for statistical computing. R Foundation for Statistical Computing, Vienna, Austria. <https://www.r-project.org/>
- Rodgers, J. A. 1987. On the antipredator advantages of coloniality: A Word of Caution. *Wilson Bulletin* 99: 269-271.
- Rodgers, J. A. and S. T. Schwikert. 1997. Breeding success and chronology of Wood Storks *Mycteria americana* in northern and central Florida, U.S.A. *Ibis* 139: 76-91.
- Royle, N. J., P. T. Smiseth and M. Köllike. 2012. What is parental care? Pages 1-14 in *The Evolution of Parental Care* (N. J. Royle, P. T. Smiseth and M. Kölliker) Oxford University Press, Oxford, England.
- Schmidt, K. A. and C. J. Whelan. 2005. Quantifying male Wood Thrush nest-attendance and its relationship to nest success. *Condor* 107: 138-144.
- Schwagmeyer, P. L. and D. W. Mock. 2008. Parental provisioning and offspring fitness: size matters. *Animal Behaviour* 75: 291-298.
- Silver, R., H. Andrews and G. F. Ball. 1985. Parental care in an ecological perspective: a quantitative analysis of avian subfamilies. *American Zoologist* 25: 823-840.

- Therneau, T. M. and P. M. Grambsch. 2000. The cox model. In *modeling survival data: extending the Cox model*: 39-77. Springer New York, USA.
- Tilgar, V., K. Moks and P. Saag. 2010. Predator-induced stress changes parental feeding behavior in pied flycatchers. *Behavioral Ecology* 22: 23-28.
- Trivers, R. L. 1972. Parental investment and sexual selection. Pages 136-179 *in* *Sexual Selection and the Descent of Man 1871-1971* (B. Campbell, Ed.) Transaction Publishers, Piscataway, New Jersey, USA.
- US Fish and Wildlife Service [FWS]. 2001. Wood Stork conservation and management for landowners. U.S. Fish and Wildlife Service, Georgia, USA.
- Westneat, D. F. and P. W. Sherman. 1993. Parentage and the evolution of parental behavior. *Behavioral Ecology* 4: 66-77.
- Wilke, C. O. 2016. Cowplot: streamlined plot theme and plot annotations for ggplot2. R package version 0.7.0. <https://cran.r-project.org/web/packages/cowplot/index.html>