



## **First record of the solanum whitefly *Aleurothrixus trachoides* (Back, 1912) (Hemiptera: Aleyrodidae) from Kenya**

Author: Canty, Roy J.

Source: Integrative Systematics: Stuttgart Contributions to Natural History, 7(1) : 133-135

Published By: Stuttgart State Museum of Natural History

URL: <https://doi.org/10.18476/2024.747949>

---

BioOne Complete ([complete.BioOne.org](https://complete.BioOne.org)) is a full-text database of 200 subscribed and open-access titles in the biological, ecological, and environmental sciences published by nonprofit societies, associations, museums, institutions, and presses.

Your use of this PDF, the BioOne Complete website, and all posted and associated content indicates your acceptance of BioOne's Terms of Use, available at [www.bioone.org/terms-of-use](https://www.bioone.org/terms-of-use).

Usage of BioOne Complete content is strictly limited to personal, educational, and non - commercial use. Commercial inquiries or rights and permissions requests should be directed to the individual publisher as copyright holder.

---

BioOne sees sustainable scholarly publishing as an inherently collaborative enterprise connecting authors, nonprofit publishers, academic institutions, research libraries, and research funders in the common goal of maximizing access to critical research.

## SHORT COMMUNICATION

# First record of the solanum whitefly *Aleurothrixus trachoides* (Back, 1912) (Hemiptera: Aleyrodidae) from Kenya

ROY J. CANTY<sup>1,2</sup>

## Abstract

The solanum whitefly *Aleurothrixus trachoides* (Back, 1912) (Hemiptera: Aleyrodidae), a pest of economic importance, is newly recorded from Kenya, collected on *Capsicum annum*. A description and images are included along with known host plants, to aid in the identification of this species. Also included are information and comments regarding the species' status as an economically important pest.

**Key words:** Africa, distribution, invasive species, pest species, Sternorrhyncha.

## Zusammenfassung

Der Nachtschatten-Mottenschildlaus oder Weißen Fliege *Aleurothrixus trachoides* (Back, 1912) (Hemiptera: Aleyrodidae), eines wirtschaftlich bedeutenden Schädling, wird erstmals für Kenia berichtet. Diese wurde auf *Capsicum annum* gesammelt. Eine Beschreibung und Bilder sind zusammen mit bekannten Wirtspflanzen enthalten, um die Identifizierung dieser Art zu erleichtern. Außerdem sind Informationen und Kommentare zum Status der Art als wirtschaftlich wichtiger Schädling enthalten.

The solanum whitefly *Aleurothrixus trachoides* (Back, 1912) was originally described from Cuba, and has spread to Gambia (albeit unconfirmed), Mozambique, Nigeria, and La Réunion in Africa as a pest (EPPO 2018). It is here recorded from Kenya for the first time and is the second species of *Aleurothrixus* Quaintance & Baker, 1914 recorded from Kenya, adding to the 39 species of Aleyrodidae currently recorded there (GBIF 2024). Of these, 17 are pest species (CABI 2024), including the major cassava pests *Aleurodicus dispersus* Russel, 1965, *Bemisia afer* (Priesner & Hosny, 1934), *Bemisia tabaci* (Gennadius, 1889), and *Paraleyrododes bondari* (Peracchi, 1971) (MUNGUTI et al. 2021), as well as other significant pests such as *Aleurocanthus spiniferus* (Quaintance, 1903), *Aleurocanthus woglumi* Ashby, 1915, *Aleurodicus dispersus* Russell, 1965, *Aleurothrixus floccosus* (Maskell, 1895), *Aleyrododes prolella* (Linnaeus, 1758), and *Trialurodes vaporariorum* Westwood, 1856 (CABI 2024).

***Aleurothrixus trachoides* (Back, 1912)**

*Aleyrododes trachoides* Back, 1912: 151–153.

*Aleurotrachelus trachoides* (Back, 1912): QUAINANCE & BAKER (1914: 103).

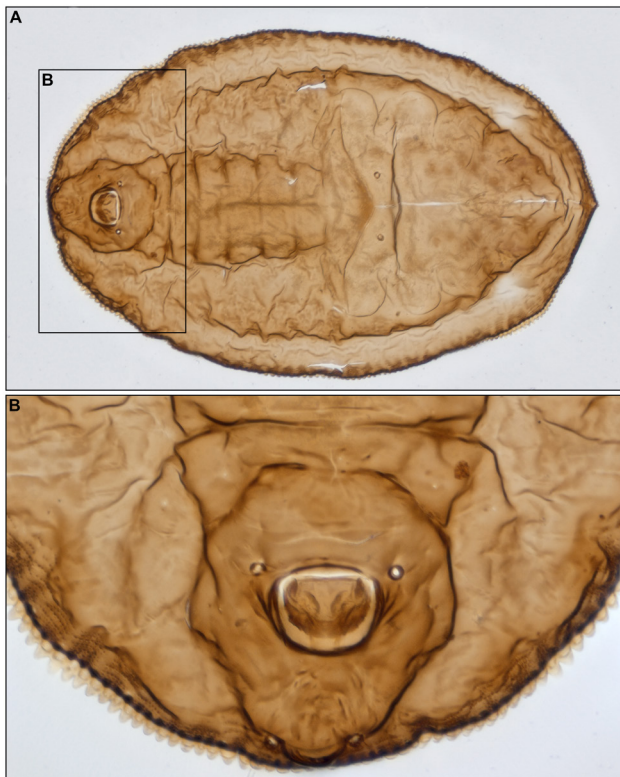
*Aleurothrixus trachoides* (Back, 1912): DUBEY & SUNDARARAJ (2015: 23–28).

**Material examined.** Kenya: Kwale, Ramisi, Kiliani, "Farm 2", on *Capsicum annum* (chili pepper), 14.II.2020, 4.41072°S

39.38366°E, 140 m, A. POLASZEK (Natural History Museum, London, UK). Material deposited in the Natural History Museum, London, UK.

**Distribution** (EPPO 2018). Africa: Gambia (unconfirmed; UK interception on sweet potato imported from Gambia), Mozambique, Nigeria, La Réunion. Asia: India (Karnataka). North America: Mexico, USA (California, Florida, Hawaii, Louisiana, Texas). Central America and Caribbean: Antigua and Barbuda, Bahamas, Barbados, Belize, Cayman Islands, Costa Rica, Cuba, Dominica, Dominican Republic, El Salvador, Guadeloupe, Guatemala, Haiti, Honduras, Jamaica, Martinique, Netherlands Antilles (Curaçao), Nicaragua, Panama, Puerto Rico, Trinidad and Tobago, Virgin Islands (US). South America: Brazil (Bahia, Rio de Janeiro), Colombia, Cuba, Ecuador (Galapagos), French Guiana, Guyana, Peru, Suriname, Venezuela. Oceania: Fiji, French Polynesia (Rangiroa, Tahiti), Guam, Micronesia (Kosrae Island), Nauru (unconfirmed), Tonga (unconfirmed).

**Host plants** (EVANS 2007; AVERY et al. 2020; IPNI 2023): Annonaceae: *Annona muricata* L., *Annona reticulata* L.; Apiaceae: *Apium graveolens* L.; Apocynaceae: *Tabernaemontana divaricata* (L.) R.Br. ex Roem. & Schult; Araceae: *Syngonium podophyllum* Schott, *Xanthosoma sagittifolium* (L.) Schott; Araceae: *Chamaedorea elegans* Mart., *Chamaedorea* Willd. sp., *Cocos nucifera* L., *Dypsis lutescens* (Wendland) Beentje & Dransfield (= *Chrysalidocarpus lutescens*), *Veitchia merrillii* Becc. (= *Adonia merrillii*); Asteraceae: *Bidens pilosa* L., *Mikania cordifolia* (L.f.) Willd.; Bignoniaceae: *Tabebuia glomerata* (= *Handroanthus capitatus*) Urb., *Tabebuia pallida* (Lindl.) Miers; Boraginaceae: *Cordia collococca* (= *Bourreria succulenta*) L.; Caesalpiniaceae: *Bauhinia divaricata* L.; Cannaceae: *Canna coccinea* Mill. (= *Canna indica*); Capparaceae: *Cleome* L. sp.; Casuarinaceae: *Casuarina* L. sp.; Chrysobalanaceae: *Licania michauxii* Prance (= *Geobalanus oblongifolius*);



**Fig. 1.** *Aleurothrixus trachoides* (Back, 1912), puparium. **A.** Dorsal habitus. **B.** Vasiform orifice.

Clusiaceae: *Calophyllum antillanum* Britton (= *Calophyllum brasiliense* var. *antillanum*), *Hypericum hypericoides* (L.) Crantz; Convolvulaceae: *Ipomoea batatas* (L.) Lam.; *Ipomoea* L. sp., *Merremia* Dennst. ex Endl. sp.; Dioscoreaceae: *Dioscorea* L. sp.; Fabaceae: *Canavalia ensiformis* (L.) DC.; Lamiaceae: *Tectona grandis* L.f.; Lauraceae: *Persea americana* Mill.; Malvaceae: *Hibiscus elatus* Sw. (= *Hibiscus tiliaceus* subsp. *tiliaceus*); Melastomataceae: *Miconia magnifolia* Gamba & Almeda; Mimosaceae: *Leucaena* Benth. sp.; Moraceae: *Ficus membranacea* C. Wright, *Ficus retusa* L.; Myrsinaceae: *Ardisia escallonioides* Schltdl. & Cham.; Myrtaceae: *Psidium guajava* L.; Phytolaccaceae: *Petiveria alliacea* L.; Polygonaceae: *Coccoloba uvifera* (L.) L.; Rosaceae: *Rosa* L. sp.; Rubiaceae: *Morinda citrifolia* L., *Psychotria nervosa* Sw., *Randia aculeata* L.; Rutaceae: *Citrus x limon* (L.) Osbeck; Sapotaceae: *Pouteria sapota* (Jacq.) H. E. Moore & Stearn; Solanaceae: *Capsicum annum* L., *Capsicum frutescens* L., *Capsicum* L. sp., *Cestrum nocturnum* L., *Datura stramonium* L., *Lycopersicon esculentum* L. (= *Solanum lycopersicum*), *Lycopersicon* L. sp. (= *Solanum* L. sp.), *Nicotiana* L. sp., *Nicotiana tabacum* L., *Solanum melongena* L., *Solanum nigrum* L., *Solanum seafortianum* Andrews, *Solanum* sp., *Solanum torvum* Sw. (= *Solanum stramonifolium* var. *stramonifolium*); Sterculiaceae: *Theobroma cacao* L.; Verbenaceae: *Citharexylum* L. sp., *Duranta erecta* L.

**Predators** (KUMAR et al. 2016; AHMED et al. 2017; AVERY et al. 2020): Insecta: Coccinellidae: *Axinoscymnus puttardriahi* Kapur & Munshi, 1965, *Delphastus pallidus* (LeConte, 1878), *Delphastus catalinae* (Horn, 1895); Aphelinidae: *Encarsia brasiliensis* Hempel, 1904, *Encarsia cubensis* Gahan, 1931, *Encar-*

*sia formosa* Gahan, 1924, *Encarsia nigricephala* Dozier, 1937, *Encarsia pergandiella* Howard, 1907, *Encarsia tabacivora* Viggiani, 1985, *Eretmocerus gracilis* Rose, 2001. Fungi: Cordycipitaceae: *Cordyceps fumosorosea* (Wize) Kepler, B. Shrestha & Spatafora.

*Aleurothrixus trachoides* was originally described from Cuba (Neotropical Region) by BACK (1912), and has spread to North America, Oceania, Asia, and Africa as a pest (EPP0 2018). It is a polyphagous pest of economic importance, predominantly feeding on plants belonging to the families Solanaceae and Convolvulaceae, causing damage by direct feeding, promoting sooty mould growth through honeydew excretion, and through transmission of the *Duranta* leaf curl virus (DLCV) (CHANDRASHEKAR et al. 2020). Therefore, this is a species for the Kenyan authorities to be alerted to and monitor for the safeguard of crops.

MARTIN (2005) recognised the following puparial characteristics for the genus *Aleurothrixus*: dorsal disc almost completely separated from wide submarginal area by an often complex, sometimes disjunct fold; cephalic setal pair absent, but metathoracic, eighth abdominal, and caudal sub-mesial setal pairs present, often long and fine; puparial submargin with seven pairs of spine-like and often minute setae in the cephalothoracic and anterior abdominal regions; vasiform orifice at least as wide as long, often transversely elliptical, sometimes elevated and usually fully occupied by the operculum; puparial margin with coarse teeth, each with a basal gland, giving the appearance of a double row of teeth; marginal teeth not or only very slightly modified at the caudal and thoracic tracheal openings.

The following species description, modified from DUBEY & SUNDARARAJ (2015), and photographs are to aid identification of the puparium of this species:

Puparium black in life, elliptical, with a fringe of white wax encircling the margin. Puparium tapered at the anterior and posterior ends and broadest at abdominal segments I & II region. Margin crenulate, with 6–8 crenulations per 0.1 mm.

Dorsum (Fig. 1A): submargin with 35–39 pairs of bands of minute tubercles. Cephalothorax elevated along the mesial plane. Longitudinal moulting suture extending to margin. Transverse moulting suture extending to outer sub-median area and anteriorly produced in the middle. Mesial length of cephalothorax equal to mesial length from base of first abdominal segment to base of vasiform orifice (VO). Mesial length of metathorax slightly shorter than mesothorax. Mesial length of abdominal segment VI twice the length of abdominal segment VII. Sub-mesial pockets clearly visible. Abdominal segments rachis-shaped; segment sutures terminating in a sub-mesial, longitudinal fold.

Vasiform orifice (Fig. 1B): subcordate to subcircular in shape; approximately 1.13 times as wide as long. Operculum subcordate in shape, occupying majority of VO. Lin-

gula spatulate, with tip visible, overlapping posterior end of VO but often hidden under dorsal surface of puparium. Apex of lingula bilobed, with pair of sub-apical setae.

### Acknowledgements

Thanks to Dr. ANDREW POLASZEK (Natural History Museum, London, UK) for collecting and providing the material for identification; Dr. DOMINIC WANKE (State Museum of Natural History Stuttgart, Germany) for creating the figure plate; and the reviewers for taking time to review this article.

### References

- AHMED, M. Z., HERNANDEZ, Y. V., KUMAR, V., FRANCIS, A., SKELLEY, P., ROHRIG, E., MCKENZIE, C., OSBORNE, L. S. & MANNION, C. (2017): Pallidus beetle, *Delphastus pallidus* LeConte (Insecta: Coleoptera: Coccinellidae), a native predatory beetle of whitefly species in Florida. FDACS Circular P-01782 (Issue 435), 4 pp.; Miami (Florida Department of Agriculture and Consumer Services, Division of Plant Industry).
- AVERY, P. B., KUMAR, V., FRANCIS, A., MCKENZIE, C. L. & OSBORNE, L. S. (2020). Compatibility of the predatory beetle, *Delphastus catalinae*, with an entomopathogenic fungus, *Cordyceps fumosorosea*, for biocontrol of invasive pepper whitefly, *Aleurothrixus trachoides*, in Florida. – *Insects* **11** (9): 590. <https://doi.org/10.3390/insects11090590>
- BACK, E. A. (1912): Notes on Cuban White-flies with description of two new species. – *The Canadian Entomologist* **44** (5): 145–153. <https://doi.org/10.4039/Ent44145-5>
- CABI (2024): CABI Compendium. CAB International, Wallingford, UK. Available from: <https://www.cabidigitallibrary.org/> (accessed 7 June 2024)
- CHANDRASHEKAR, K., RAO, A., GORANE, A., VERMA, R. & TRIPATHI, S. (2020): *Aleurothrixus trachoides* (Back) can transmit begomovirus from *Duranta* to potato, tomato and bell pepper. – *Journal of Biosciences* **45** (1): 36. <https://doi.org/10.1007/s12038-020-0012-2>
- DUBEY, A. K. & SUNDARARAJ, R. (2015): A new combination and first record of the genus *Aleurothrixus* Quaintance and Baker (Hemiptera: Aleyrodidae) from India. – *Biosystematica* **9** (1–2): 23–28.
- EPPO (2018): Mini data sheet on *Aleurothrixus trachoides*. EPPO, Paris. Available from: <https://gd.eppo.int/taxon/ALTRTR/documents> (accessed 18 March 2024).
- EVANS, G. A. (2007). Host plant list of the whiteflies (Aleyrodidae) of the world, 290 pp.; Riverdale (USDA/Animal Plant Health Inspection Service [APHIS]).
- GBIF (2024): GBIF Occurrence Download. GBIF.org. Available from: <https://doi.org/10.15468/dl.7gw3fs> (accessed 6 June 2024)
- IPNI (2023): International Plant Names Index. Published on the Internet. The Royal Botanic Gardens, Kew, Harvard University Herbaria & Libraries and Australian National Herbarium. Available from: <http://www.ipni.org> (accessed 18 December 2023)
- KUMAR, V., FRANCIS, A., AHMED, M., MANNION, C., STOCKS, I., ROHRIG, E., MCKENZIE, C. & OSBORNE, L. (2017): Solanum whitefly, pepper whitefly (suggested common names) *Aleurotrachelus trachoides* Back (Insecta: Hemiptera: Aleyrodidae: Aleyrodinae). Document EENY-662, 4 pp.; Gainesville (University of Florida, IFAS Extension).
- MARTIN, J. H. (2005): Whiteflies of Belize (Hemiptera: Aleyrodidae). Part 2—a review of the subfamily Aleyrodinae Westwood. – *Zootaxa* **1098** (1): 1–116. <https://doi.org/10.11646/zootaxa.1098.1.1>
- MUNGUTI, F. M., KILALO, D. C., NYABOGA, E. N., WOSULA, E. N., MACHARIA, I. & MWANGO'MBE, A. W. (2021): Distribution and molecular diversity of whitefly species colonizing cassava in Kenya. – *Insects* **12** (19): 875. <https://doi.org/10.3390/insects12100875>
- QUAINTANCE, A. L. & BAKER, A. C. (1914): Classification of the Aleyrodidae. Part II. – Technical Series, United States Department of Agriculture, Bureau of Entomology **27**: 95–109.

Authors' addresses:

<sup>1</sup>Stuttgart State Museum of Natural History, Rosenstein 1, 70329 Stuttgart, Germany; e-mail: royjamescanty@gmail.com; <https://orcid.org/0000-0002-3547-9424>

<sup>2</sup>Department of Life Sciences, The Natural History Museum, Cromwell Road, London SW7 5BD, UK.

ZooBank registration: <https://zoobank.org/References/1CBE4E34-2665-4687-A8E3-FDC24D1EA4C8>

Manuscript received: 25.I.2023; accepted: 13.VI.2024