



A cytological study of flowering plants from Saudi Arabia

Authors: Al-Turki, Turki A., Filfilan, Shafik A., and Mehmood, Syed F.

Source: Willdenowia, 30(2) : 339-358

Published By: Botanic Garden and Botanical Museum Berlin (BGBM)

URL: <https://doi.org/10.3372/wi.30.30211>

BioOne Complete (complete.BioOne.org) is a full-text database of 200 subscribed and open-access titles in the biological, ecological, and environmental sciences published by nonprofit societies, associations, museums, institutions, and presses.

Your use of this PDF, the BioOne Complete website, and all posted and associated content indicates your acceptance of BioOne's Terms of Use, available at www.bioone.org/terms-of-use.

Usage of BioOne Complete content is strictly limited to personal, educational, and non - commercial use. Commercial inquiries or rights and permissions requests should be directed to the individual publisher as copyright holder.

BioOne sees sustainable scholarly publishing as an inherently collaborative enterprise connecting authors, nonprofit publishers, academic institutions, research libraries, and research funders in the common goal of maximizing access to critical research.

TURKI A. AL-TURKI, SHAFIK A. FILFILAN & SYED F. MEHMOOD

A cytological study of flowering plants from Saudi Arabia

Abstract

Al-Turki, T. A., Filfilan, S. A. & Mehmood, S. F.: A cytological study of flowering plants from Saudi Arabia. – Willdenowia 30: 339-358. 2000. – ISSN 000-000.

The chromosome numbers of 31 taxa belonging to 14 families of angiosperms collected from different regions of Saudi Arabia are reported. These include first chromosome number reports for six species: *Anabasis setifera* 2n=18, *Cleome amblyocarpa* 2n=20, *Halopeplis perfoliata* 2n=18, *Lavandula coronopifolia* 2n=42, *Lycium shawii* 2n=24 and *Salvia deserti* 2n=48. A new basic number and/or a new ploidy level is reported for two species: *Asphodelus tenuifolius* 2n=4x=52 and *Heliotropium lasiocarpum* 2n=4x=32. The chromosome numbers of the other 23 species are the first reports from Saudi Arabian populations: *Abrus precatorius* 2n=22, *Alhagi camelorum* 2n=16+2B, *Amaranthus spinosus* 2n=34, *Astragalus abyssinicus* 2n=16, *Bieneria cycloptera* 2n=18, *Capparis spinosa* 2n= 38, *Chenopodium album* 2n=54, *C. ambrosioides* 2n=32, *C. ficifolium* 2n=18, *C. glaucum* 2n=18, *C. murale* 2n=18, *Datura innoxia* 2n=24, *Halocnemum strobilaceum* 2n=18, *Leptadenia pyrotechnica* 2n=22, *Moltkiopsis ciliata* 2n=12, *Rumex dentatus* 2n=40, *Salvia aegyptiaca* 2n=28, *S. spinosa* 2n=20, *Senna alexandrina* 2n=28, *Sesuvium sesuvioides* 2n=16, *Silene apetala* 2n=24, *Withania somnifera* 2n=48 and *Zygophyllum coccineum* 2n=16. Karyotype analyses for six species, viz. *Alhagi camelorum*, *Astragalus abyssinicus*, *Datura innoxia*, *Moltkiopsis ciliata*, *Sesuvium sesuvioides* and *Rumex dentatus* are presented.

Introduction

Saudi Arabia, the largest country of the Arabian Peninsula, has a diversified higher plant flora in its varied landscapes, with about 2243 species in 837 genera and 142 families (Collenette 1998, 1999). Al-Farhan (1999) recognizes three phytogeographical regions in Saudi Arabia, namely (i) the Saharo-Sindian region, (ii) the Somali-Masai region and (iii) the Afro-montane archipelago-like region. Aspects of the plant diversity of Saudi Arabia have been documented by Mandaville (1990), Chaudhary (1999) and Chaudhary & Al-Jowaid (1999).

Although chromosome numbers of some species found in Saudi Arabia are known from other parts of their distribution area, there are many which have never been reported previously. Only few species growing in Saudi Arabia were cytologically investigated so far by Al-Turki (1992) and Badr & Gasim (1992). The present study therefore aims at a completion of our knowledge of the cytology of the flowering plants in the Kingdom, providing a basis for nature conservation and other applied programs as well as for taxonomic, genetic and molecular studies. In this study, chromosome numbers of 31 taxa belonging to 14 families of flowering plants are provided.

Material and methods

Plants or seeds of the taxa investigated were collected from seven provinces of the Kingdom of Saudi Arabia between 1994 and 2000. The collecting data for each provenance are given in detail. The plants were identified by staff members of the Herbarium of the King Abdulaziz City for Science and Technology (KACST), Riyadh, using the works of Migahid (1978), Miller & Cope (1996), Collenette (1999) and Chaudhary (1999). Voucher specimens of all 31 taxa studied were deposited in the KACST herbarium.

Chromosome counts were made from metaphase plates of mitotic division in root tips of seedling germinated in 90 mm plastic petri-dishes on two layers of Whatman No.1 filter paper moistened with distilled water. They were incubated at 25 °C for 12 h in the light and 15 °C for 12 h in the dark in each 24 h cycle. The cytological preparations were made according to the technique described by Darlington & La Cour (1976): root-tips were excised in the morning, pretreated with 0.002M 8-hydroxyquinoline for 5 h at 20 °C, fixed in freshly prepared acetic-alcohol solution (3:1) and, after a brief wash, hydrolysed in 1N HCl for 10-15 min at 60 °C. Following standard aceto-orcein squash technique, root tips were subjected to 0.2% aceto-orcein solution for 30-60 min except for *Silene* and *Salvia* material which were stained by Feulgen's reagent. Preparations were dehydrated by quick freezing in liquid carbon dioxide (Jacobson 1965) and finally mounted in euparal. Best observations, from an average of 30 cells, were photographed using the 100× oil immersion phase contrast objective of a Leica DMRBE photomicroscope.

For the karyotype analysis individual chromosomes were cut from the photographs of well separated metaphases, arranged in a descending order of their length and grouped to form homologous pairs on the basis of gross morphology and centromere position (Fig. 1-2). Measurements for short and long arms and total length of the chromosomes for five different metaphases of each species were done using the Ikaros program on an image analyzer of MetaSystems GmbH (Table 1-6), which helped in reducing the error factor to minimal. The nomenclature of Levan & al. (1964) has been used to determine the centromere position as median (M, with a ratio long : short arm (L/S) = 1.0 and m, with L/S = 1.0-1.7), sub-median (sm) or sub-terminal (st). The karyotype formulae (see Table 1-6) are given according to the definitions by Subramanian (1988): B and C = chromosomes of 4-5 µm length with submedian (B) or median (C) centromere; E and F = chromosomes of 3-3.9 µm length with submedian (E) or median (F) centromere; I = chromosomes of 2-2.9 µm length with median centromere.

The chromosome number indexes by Fedorov (1969), Moore (1973-77), Goldblatt (1981-88), Goldblatt & Johnson (1990-96) were evaluated for previous chromosome number reports.

Results and discussion

The chromosome numbers determined for 31 taxa are the first reports from Saudi Arabian populations. Of these, the chromosome numbers for six species, viz. *Anabasis setifera*, *Cleome amblyocarpa*, *Halopeplis perfoliata*, *Lavandula coronopifolia*, *Lycium shawii* and *Salvia deserti* were not known before; for two species, *Asphodelus tenuifolius* and *Heliotropium lasiocarpum*, a new basic number and/or a new ploidy level is reported. Three of the counted species, *Abrus precatorious*, *Amaranthus spinosus* and *Sesuvium sesuvioides*, are widespread non-endemics but considered as endangered in Saudi Arabia (Collenette 1998, 1999).

The species investigated are listed by their families in alphabetical order.

Aizoaceae

Sesuvium sesuvioides (Fenzl) Verd., 2n=16

Syn.: *Diplochonium sesuvioides* Fenzl; *Trianthema polysperma* Hochst. ex Oliv.

EASTERN PROVINCE: Anak, Dammam, east of city, coastal area, saline, sea flooded soil, 26°8'N, 49°72'E, 18.10.1994, Al-Turki & Abdul Ghafoor 152 (KACST).

Our report corroborates the gametic count of n=8 by Khattoon (1991); a tetraploid number of

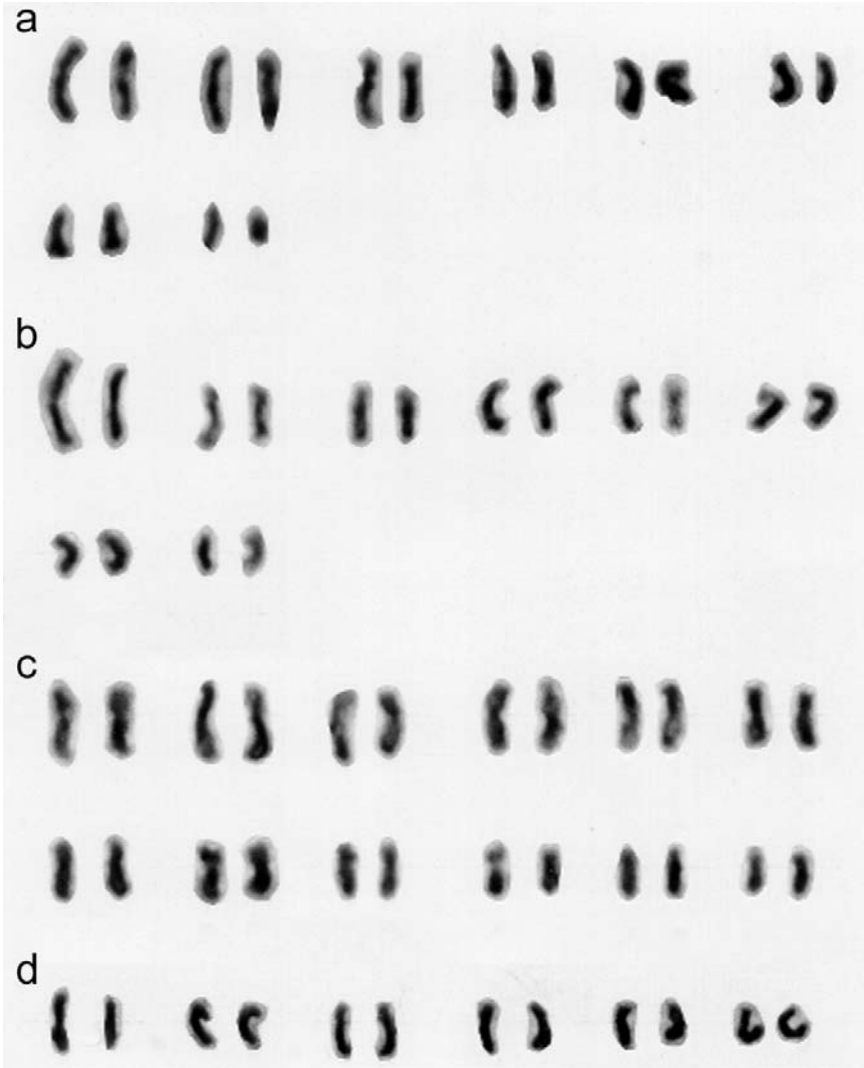


Fig. 1. Karyograms – a: *Alhagi camelorum* ($2n=16$); b: *Astragalus abyssinicus* ($2n=16$); c: *Datura innoxia* ($2n=24$); d: *Moltkiopsis ciliata* ($2n=12$). See text and Tables 1-4.

$2n=32$ was found by Bittrich (1986). Karyogram and karyotype analysis are shown in Fig. 2a and Table 5 respectively.

The species is considered as endangered in Saudi Arabia (Collenette 1998, 1999) but is widespread elsewhere and has also been reported from the neighbouring Yemen (Miller & Cope 1996). Flowering time: October-November.

Amaranthaceae

Amaranthus spinosus L., $2n=34$

JIZAN PROVINCE: Jabal Fiyfa, Jizan, $16^{\circ}54'N$, $42^{\circ}32'E$, 9.6.1999, *Al-Turki, Al-Farhan & Thomas* 3785 (KACST).

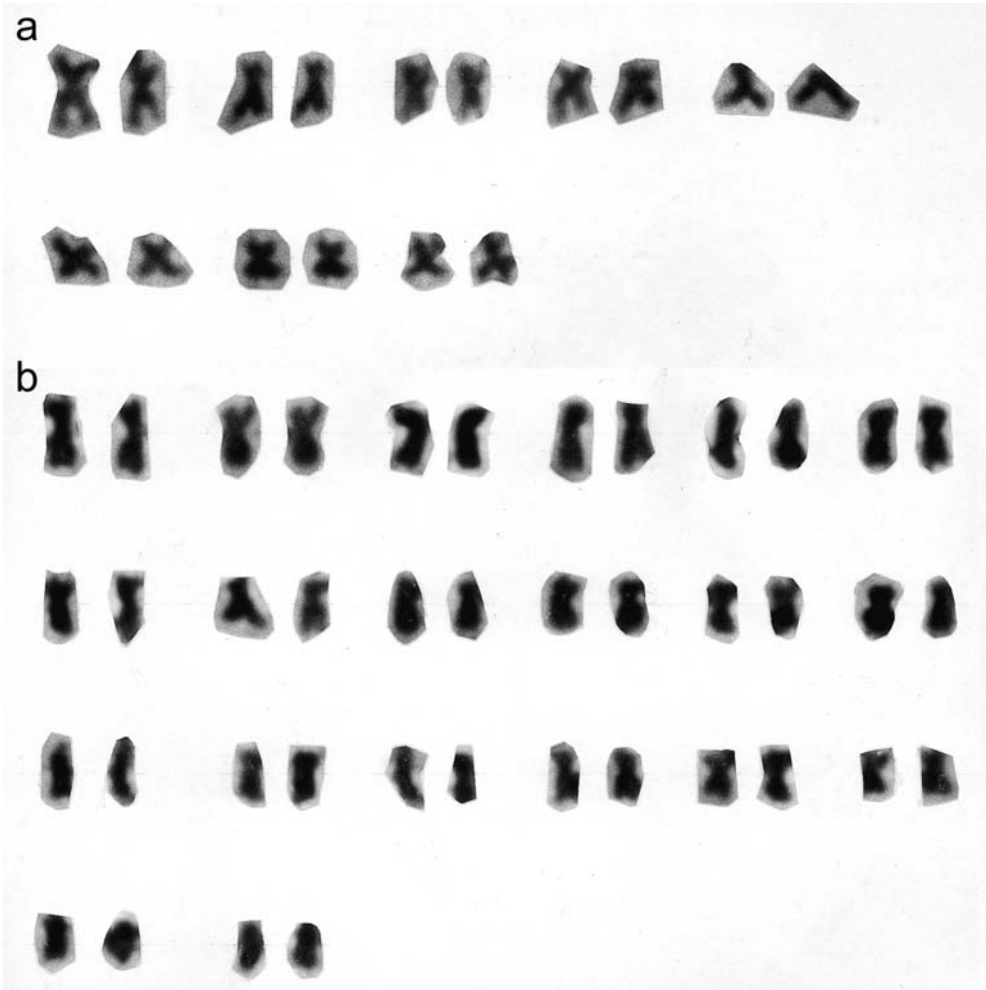


Fig. 2. Karyograms – a: *Sesuvium sesuviodes* ($2n=16$); b: *Rumes dentatus* ($2n=40$). See text and Tables 5-6.

Our count agrees with the somatic counts reported by Tandon & Tawakley (1970), Bir & Sidhu (1980), Renard & al. (1983), Baquar & Olusi (1988), Paiva & Leitão (1989) and Greizerstein & Poggio (1992) and the gametic counts of $n=17$ by Sharma (1970 according to Goldblatt 1981), Koul & al. (1976), Behera & Patnaik (1977, 1982) and Sidhu (1979 according to Goldblatt 1984).

This pantropical weed is rare in Saudi Arabia and has been classified as endangered by Collenette (1998, 1999). Flowering time: June-July.

Asclepiadaceae

Leptadenia pyrotechnica (Forssk.) Decne., $2n=22$

Syn.: *Cynanchum pyrotechnicum* Forssk.

RIYADH PROVINCE: Wadi Ad-Degha, Salboukh, 72 km NW of Riyadh, 25°01'N, 46°18'E, 22.12.1998, Al-Turki & Swarup 2803B (KACST).

This report agrees with the previous report by Baquar & Hussain (1967).

This shrub is very widespread in Saudi Arabia, occurring from sea level to 4000 ft (Collenette 1999). Flowering time: December-January.

Boraginaceae

Heliotropium lasiocarpum Fisch. & C. A. Mey., 2n=32

RIYADH PROVINCE: Dirab, 35 km SW from Riyadh, 25°48'N, 46°48'E, 12.4.1995, *Al-Turki* 842 (KACST).

We are aware of only two previous reports for this species: one of a hexaploid cytotype (2n=48; Podlech & Bader 1974) and the other of a octoploid cytotype (n=32; Khatoon 1991). This is apparently the first report of a tetraploid cytotype of this species.

This leafy, branched herb with tiny white flowers is a frequent weed of irrigated land. Flowering time: April-May.

Moltkiopsis ciliata (Forssk.) I. M. Johnston, 2n=12

Syn.: *Lithospermum ciliatum* Forssk.; *L. angustifolium* Forssk.; *L. callosum* Vahl

RIYADH PROVINCE: 72 km from Riyadh to Dammam highway, 25°02'N, 47°00'E, 21.3.1999, *Al-Turki, Swarupanandan & Mehmood* 3751 (KACST).

We are aware of only one previous report for this species (Amin 1979), also giving 2n=12. Karyogram and karyotype analysis are shown in Fig. 1d and Table 4 respectively.

Two varieties can be recognized in the single species of this genus (Al-Turki & Swarupan in prep.); the material investigated here belongs to var. *ciliata*. *Moltkiopsis ciliata* is distributed from N Africa to Iran. Flowering time: March-April.

Caesalpiniaceae

Senna alexandrina Mill., 2n=28

Syn.: *Cassia senna* L.; *C. medica* Forssk.; *C. ligustrina* sensu Forssk.; *C. angustifolia* Vahl; *C. acutifolia* Del. (1802); *C. alexandrina* (Mill.) Thell.

JIZAN PROVINCE: Wadi Besh, near Sabya, Jizan, 17°25'N, 42°25'E, 8.6.1999, *Al-Turki & Thomas* 3784 (KACST).

Previous counts have been published under the synonym *Cassia senna* by Khatoon (1991) and George & Bhavandan (1993) and are in agreement with our counts.

A medicinally important plant, which is quite common in Hijaz and other areas. Flowering time: May-July.

Capparaceae

Capparis spinosa L., 2n=38

Syn.: *Capparis aegyptiaca* Lam.; *C. leucophylla* DC.; *C. mucronifolia* Boiss.; *C. elliptica* Haussk. & Bornm.

RIYADH PROVINCE: Diriya, c.10 km W of Riyadh, in the wadi, 24°09'N, 46°12'E, 21.7.1994, *Al-Turki & Abdul Ghafoor* 40 (KACST).

Our count agrees with those reported by Murin & Chaudhri (1970) and Magulaev (1979 according to Goldblatt 1984).

The widely distributed English caper is also widespread in Saudi Arabia (Chaudhary 1999). Flowering time: June-July.

Cleome amblyocarpa Barratte & Murb., 2n=20

Syn.: *Cleome arabica* auct., non. L.; *Siliquaria glandulosa* Forssk.; *C. africana* Botsch.

HAIL PROVINCE: As-Sayyirah, near HADCO company, Hail, 26°05'N, 44°00'E, 25.4.1999, *Al-Turki & Mehmood* 3155 (KACST).

This is the first report of the chromosome number of this species.

Cleome amblyocarpa is widely distributed in the Arabian Peninsula and extends to the Saharo-Sindian and Irano-Turanian regions. Flowering time: April-May.

Caryophyllaceae***Silene apetala* Willd., 2n=24**

RIYADH PROVINCE: Wadi Degha, Salboukh, 25°50'N, 46°25'E, 28.12.1997, *Al-Turki & Mehmood 2110A* (KACST).

Our count agrees with the reports by Loon & Jong (1978), Amin (1979) and Degraeve (1980).

A widely distributed, slender annual herb with a prominently 10-nerved calyx and pink petals. The seeds are distinctly winged, grooved and papillose. Flowering time: December-January.

Chenopodiaceae***Anabasis setifera* Moq., 2n=18**

EASTERN PROVINCE: Darin, Saudi Arabian Gulf coast, 26°33'N, 50°04'E, 17.11.1994, *Al-Turki & Abdul Ghafoor 217* (KACST).

We have found no previous chromosome number report for this species. The number counted has also been found in other species of the genus, such as *A. articulata* (Forssk.) Moq.-Tand. (Murin & Chaudhri 1970) and *A. brevifolia* C. A. Mey. (Lomonosova & Krasnikov 1993).

A widely distributed perennial herb with a woody base, fleshy green stems and tiny fleshy leaves. Flowering time: October-November.

***Bienertia cycloptera* Bunge, 2n=18**

EASTERN PROVINCE: Darin, Saudi Arabian Gulf coast, 26°33'N, 50°04'E, 18.10.1994, *Al-Turki & Abdul Ghafoor 156* (KACST).

The chromosome number obtained for this species corroborates the reports by Murin & Chaudhri (1970) and Khatoon (1991, n=9).

An annual herb with wide, fleshy, dark green leaves, known from scattered localities in the eastern part of the country. Flowering time: September-October.

***Chenopodium album* L., 2n=54**

AL-BAHA PROVINCE: Al-Baha, wasteland in the city, 20°00'N, 41°27'E, 13.5.2000, *Al-Turki & Swarupanandan 5003* (KACST).

Our count agrees with the previously published reports (Cole 1962, Uotila 1973, Tanaka & Tanaka 1980, Schwarzwala 1986, Palomino & al. 1990).

A widespread and variable, sparsely branching, leafy herb with its tiny bud-like flowers with yellow stamens conglomerate in axillary and terminal panicles. Flowering time: April-May.

***Chenopodium ambrosioides* L., 2n=32**

Syn. : *C. anthelminticum* L.

AL-BAHA PROVINCE: Al-Baha, wasteland in the city, 20°00'N, 41°27'E, 13.5.2000, *Al-Turki & Swarupanandan 5024* (KACST).

The chromosome count for this species is consistent with previous reports, by, e.g., Lorz (1937), Uotila (1973), Queiros (1975), Koul & al. (1976), Tanaka & Tanaka (1980) and Schwarzwala (1986).

Palomino & al. (1990) substantiated the placement of *C. ambrosioides* and the closely related *C. graveolens* in the separate genus *Teloxys* by cytogenetic data. An aromatic, branching herb with unevenly lobed leaves and the bud-like flowers conglomerate in the leaf axils. Usually along ditches and well-watered areas. Flowering time: April-May.

***Chenopodium ficifolium* Sm., 2n=18.**

RIYADH PROVINCE: Dirab, c. 35 km SW of Riyadh, 25°48'N, 46°48'E, 12.5.1995, *Al-Turki & Abdul Ghafoor 850* (KACST).

Our count for this species is in agreement with previous reports (Uotila 1973 and see Fedorov 1969).

A mealy whitish-green annual herb, occurring as a weed in central and eastern Saudi Arabia, often confused with *C. album* L. (Chaudhary 1999). Flowering time: March-April.

***Chenopodium glaucum* L., 2n=18**

RIYADH PROVINCE: Wadi Al'Hair, c. 30 km S of Riyadh, 24°25'N, 46°50'E, 12.5.1995, *Al-Turki & Abdul Ghafoor 840* (KACST).

Our count agrees with the previous reports by Hara (1952), Podlech & Dieterle (1969), Uotila (1973) and Tanaka & Tanaka (1980).

This sprawling herb with ridged stems and glossy, glaucous leaves is a locally noxious weed of cultivated areas and greenhouses in Saudi Arabia. Flowering time: March-April.

***Chenopodium murale* L., 2n=18**

AL-BAHA PROVINCE: Al-Baha, wasteland in the city, 20°00'N, 41°27'E, 13.5.2000, *Al-Turki & Swarupanandan 4999* (KACST).

Our count is consistent with the previous reports by Mehra & Malik (1963), Giusti (1964), Kliphuis & Wieffering (1972) and Uotila (1973).

A variable annual herb fairly widespread as a weed in Saudi Arabia. Flowering time: March-April.

***Halocnemum strobilaceum* (Pallas) M. Bieb., 2n=18**

Syn.: *Salicornia strobilacea* Pallas; *S. cruciata* Forssk.; *Haloplepis strobilacea* (Pallas) Cesati, Passer & Gibelli

EASTERN PROVINCE: Darin, Gulf coast, 26°33'N, 50°04'E, 18.10.1994, *Al-Turki & Abdul Ghafoor 155* (KACST).

Our count corroborates previous counts by Bhattacharya & al. (1971), Zeybek & al. (1977), Hekmat-Shoar & Manafi (1982) and Khatoon (1991, n=9).

A stiffly erect grey-green bushy shrublet with slender branches; a halophyte occurring in scattered localities of the east and northwest coasts. Flowering time: September-October.

***Haloplepis perfoliata* (Forssk.) Bunge ex Schweinf., 2n=18**

EASTERN PROVINCE: Darin, Gulf coast, 26°33'N, 50°04'E, 19.10.1994, *Al-Turki & Abdul Ghafoor 165* (KACST).

Apparently the first chromosome number report for this species. The only other species of the genus investigated cytologically, *H. amplexicaulis* (Vahl) Cesati & al., has also 2n=18 (Blanche & Molero 1987).

A basally woody succulent herb with the stems composed of large, green fleshy, obovoid segments; a halophyte widespread along the coasts. Flowering time: September-October.

Labiatae***Lavandula coronopifolia* Poir., 2n=42**

HAIL PROVINCE: Jabl Aja, Hail, 27°37'N, 41°40'E, 26.4.1999, *Al-Turki & Mehmood 3240* (KACST).

The first chromosome number report for this eastern Saharo-Arabian and Sudanian subshrub. It grows in shallow ravines at elevations up to 3500ft and is widespread in Saudi Arabia. Flowering time: March-April.

***Salvia aegyptiaca* L., 2n=28**

Syn.: *S. arida* Salisb. (1796), *Thymus hirtus* Viv.

QASSIM PROVINCE: Dukhna, Qassim, 25°03'N, 43°24'E, 1.5.1996, *Al-Turki 1542* (KACST).

Our count agrees with the counts reported by Delestaing (1954) and Borgen (1980).

A small subshrub variable in flower size and the shade of flower colour, very widespread on shallow sand or silt, often in rocky terrain. Flowering time: May-June.

***Salvia deserti* Decne., 2n=48**

QASSIM PROVINCE: Dukhna, Qassim, 25°03'N, 43° 24'E, 1.5.1996, *Al-Turki 1533* (KACST).

We are not aware of any previous chromosome number report for *Salvia deserti* Decne. (not to be confused with *S. deserti* Schang., with 2n=14, Patudin & al. 1975, and 2n=16, Zakirova &

Nafanailova 1988, Nafanailova & Zakirova 1991). Our count of $2n=48$ indicates a hexaploid chromosome complement with the basic number $x=8$.

A leafy shrublet with very rugose leaves and pale blue or white flowers. Flowering time: May-June.

Salvia spinosa L., $2n=20$

Syn.: *Salvia aegyptiaca* L. (1767), non L. (1753)

RIYADH PROVINCE: Wadi Degha, Salboukh, $25^{\circ}52'N$, $46^{\circ}21'E$, 28.12.1997, Al-Turki & Mehmood 2110B (KACST).

Our count corroborates earlier reports by Yakovleva (1933), Patudin & al. (1975) and Kli-phuis & Barkoudah (1977).

A strongly aromatic, small, white-flowered, perennial herb with spinose calyx teeth; leaves, branches and inflorescence with an indumentum of soft, spreading, crisped hairs. Flowering time: December-January.

Liliaceae

Asphodelus tenuifolius Cav., $2n=52$

MECCA PROVINCE: Wadi Heet, Al-Ghuwayga, Shafa mountain, Taif, $21^{\circ}03'N$, $40^{\circ}19'E$, 17.5.1999, Al-Turki & Abdul Ghafoor 3456 (KACST).

Our counts revealed a new basic number ($x=13$) and, for the first time (see also Díaz Lifante & Valdés 1996), a tetraploid cytotype for this species. All previous reports give a diploid chromosome complement and a basic number of either $x=14$ (Podlech 1986, Ruiz Rejon & al. 1990, Díaz Lifante 1991, Díaz Lifante & al. 1992) or $x=15$ (Sidhu [1979 according to Goldblatt 1984], Bir & Sidhu 1980), the latter basic number reports omitted by Díaz Lifante & Valdés (1996). A tetraploid chromosome complement with a basic number of $x=13$, as found by us for *A. tenuifolia*, has so far been reported exclusively from *A. refractus* (Díaz Lifante 1992, see also Díaz Lifante & Valdés 1996). A confusion with the latter species can be excluded according to the key given by Díaz Lifante & Valdés (1996) and the different distribution and ecology of the two species. *A. refractus* seems rare in Saudi Arabia and confined to rather deep sands in the eastern and central regions (Mandaville 1990, Collenette 1998, 1999); it has never been recorded from the Taif region. Our count gives further support to the view that besides the primary basic number of $x=14$ there are secondary basic numbers in the genus *Asphodelus*.

This extremely widespread species usually occurs in sand pans and on rocky slopes. Flowering time : May-June.

Papilionaceae

Abrus precatorious L., $2n=22$

Syn.: *Glycine abrus* L.

AL-BAHA PROVINCE: Jabl Shada, Baha, near Al-Makhwah, $19^{\circ}51'N$, $41^{\circ}18'E$, 19.5.1999, Al-Turki & Abdul Ghafoor 3620 (KACST).

Our count agrees with the previous reports by Bir & Kumari (1977), Borgen (1980), Yeh & al. (1986), Kumari & Bir (1990) and Gill & Husaini (1986, $n=11$).

The bright red seeds with a black spot of this perennial vine are poisonous to mammals and used as jewellers' weights. Collenette (1998, 1999) considers it as endangered in Saudi Arabia. Flowering time: March-May.

Alhagi camelorum Fisch., $2n=16 + 2B$

RIYADH PROVINCE: Dirab, 35 km SW from Riyadh, $28^{\circ}48'N$, $46^{\circ}48'E$, 9.11.1994, Al-Turki & Abdul Ghafoor 204B (KACST).

Our counts agrees with the somatic count reported by Lessani & Chariat-Penahi (1979). Karyogram and karyotype analysis are given in Fig. 1a and Table 1 respectively.

Spiny shrub or shrublet with simple leaves and solitary red flowers laterally on the spines. Flowering time: November-December.

Astragalus abyssinicus Steud. ex A. Rich., 2n=16

MECCA PROVINCE: Wadi Herjal, Shafa mountain, Taif, 21°03'N, 40°19'E, 18.5.1999, *Al-Turki & Abdul Ghafoor 3555* (KACST).

The chromosome count corroborates the previous report by Ledingham (1960). Karyogram and karyotype analysis are given in Fig. 1b and Table 2 respectively. Flowering time: May-June.

Polygonaceae

Rumex dentatus Wall., 2n=40

Syn.: *Rumex obtusifolius* sensu Forssk.

AL-BAHA PROVINCE: Al-Baha, wasteland in the city, 20°00'N, 41°27'E, 13.5.2000, *Al-Turki & Swarupanandan 5035b* (KACST).

Our count agrees with the previous ones by Kliphuis & Barkoudah (1977), Bir & Sidhu (1979, 1980), Munshi (1983), Garcia & al. (1989) and the gametic count by Koul & Wakhlu (1976). Karyogram and karyotype analysis are shown in Fig. 2b and Table 6 respectively.

This annual herb is a weed of wet and moist cultivated areas widely distributed also in the other countries of Arabian Peninsula. Flowering time: April-May.

Solanaceae

Datura innoxia Mill., 2n=24

MECCA PROVINCE: Wadi Heet, Shafa mountain ranges, Taif, 21°03'N, 40°19'E, 17.5.1999, *Al-Turki & Abdul Ghafoor 3491B* (KACST).

The count agrees with the previous reports for this species (n=12: Bir & al. 1978, Bir & Neelam 1984, Husaini & Iwo 1990, Sinha 1991; 2n=24: Ma & al. 1985, Palomino & al. 1988, Ge & Lou 1990). Karyogram and karyotype analysis are given in Fig. 1c and Table 3 respectively.

A fairly widespread plant, especially in the lowlands. Flowering time : May-June.

Lycium shawii Roem. & Schult., 2n=24

AL-QASSIM PROVINCE: Al-Awshaziya, 26°05'N, 44°00'E, 9.2.1999, *Al-Turki & Mehmood 3750* (KACST).

This is the first chromosome number report for *Lycium shawii*. The same chromosome number has also been reported for other members of the genus, e.g., *L. depressum* Stocks (Lessani & Chariat-Panahi 1979) and *L. edgeworthii* Dunal (Khatoon 1991, n=12).

This variable shrub with white to deep blue flowers and orange coloured edible berries is widespread in Saudi Arabia. Flowering time: February-March.

Withania somnifera (L.) Dun., 2n=48

Syn.: *Physalis curassavica* sensu Forssk.; *P. somnifera* L.

RIYADH PROVINCE: Dirab, between Riyadh and Hafiratun Nisah, 25°48'N, 46°42'E, 13.5.1997, *Al-Turki & Abdul Ghafoor 1970* (KACST).

Our count agrees with those reported by Vasudevan (1975 according to Goldblatt 1981), Bir & al. (1978), Bir & Neelam (1980), Bir & Sidhu (1979, n=24), Bir & Sidhu (1980), Khatoon & Ali (1982), Renard & al. (1983), Salvik & al. (1993) and Sidhu (1979, n=24, according to Goldblatt 1984). Bir & Neelam (1984) in contrast reported a count of n=36 for this species.

A very common and widespread plant of waste places, with orange coloured berries, which are enveloped by a papery, inflated and persistent calyx. Flowering time: April-May.

Zygophyllaceae

Zygophyllum coccineum L., 2n=16

Syn.: *Zygophyllum desertorum* Forssk.

EASTERN PROVINCE: Dammam, c.1 km from sea, sandy soil, 26°42'N, 52°04'E, 19.10.1994, *Al-Turki & Abdul Ghafoor 163* (KACST).

Our count agrees with the previous report by Hilu (1979).

A small annual herb with fleshy leaves and somewhat whitish flowers of saline and sandy habitats near the sea. Flowering time: October-November.

Acknowledgements

We gratefully acknowledge the support of the Director, General Directorate of Research Grants Programs, King Abdulaziz City for Science & Technology (KACST), Riyadh, by funding this research project (Project No. AR-15-100). We are thankful to Dr A. J. Davy, School of Biological Sciences, University of East Anglia, Norwich, UK, for reviewing an earlier draft of the manuscript and showing his constant personal interest in this study. The authors are indebted to Prof. Clive A. Stace, Department of Biology, University of Leicester, Leicester, England, for providing valuable information on previous chromosome number reports. We are also thankful to Dr K. Swarupanandan and Mr Abdul Ghafoor for valuable discussions.

References

- Al-Farhan, A. H. 1999: A phytogeographical analysis of the floristic elements in Saudi Arabia. – *Pakistan J. Biol. Sci.* **2**: 702-711.
- Al-Turki, T. A. 1992: Systematic and ecological studies of *Suaeda* and *Salicornia* from Saudi Arabia and Britain. – Ph. D. Thesis, University of East Anglia, Norwich, England.
- Amin, A. 1979: Chromosome numbers of ten flowering plants of Egypt. – *U.A.R. J.* **22**: 73-75.
- Badr, A. & Gasim, A. 1992: Chromosomal studies on some plants in the flora of Madinah region. – *J. King Abdul Aziz Univ.* **4**: 23-35.
- Baquar, S. R. & Hussain, A. 1967: Chromosome studies in some flowering plants of West Pakistan I. – *Phyton (Buenos Aires)* **24(2)**: 49-55.
- & Olusi, O. O. 1988: Cytomorphological and phylogenetic studies of the genus *Amaranthus* from Nigeria. – *Kromosomo* **51/52**: 1665-1674.
- Behera, B. & Patnaik, S. N. 1977: Genome analysis of *Amaranthus dubius* Mart. ex Thell. through the study of *A. spinosus* × *A. dubius* hybrids. – *Proc. Indian Sci. Congr. Assoc.* **64**: 144.
- & — 1982: Genome analysis of *Amaranthus dubius* Mart. ex Thell. through the study of *Amaranthus spinosus* × *A. dubius* hybrids. – *Cytologia* **47**: 379-389.
- Bhattacharya, S. S., Khalifa, M. M. & Chaudhri, I. I. 1971: Reports. – [In: Löve, Á. (ed.), IOPB chromosome number reports XXXII]. – *Taxon* **20**: 349-350.
- Bir, S. S. & Kumari, S. 1977: Evolutionary status of *Leguminosae* from Pachmarhi, central India. – *Nucleus* **20**: 94-98.
- & Neelam 1980: Reports. – [In: Löve, Á. (ed.), IOPB chromosome number reports LXIX]. – *Taxon* **29**: 711.
- & — 1984: SOCGI plant chromosome number reports II. – *J. Cytol. Genet.* **19**: 113-114.
- & Sidhu, M. 1979: Cytological observations in weed flora of orchards of Patiala district, Punjab. – *Recent Res. Pl. Sci. (New Delhi)* **7**: 261-271.
- & — 1980: Cyto-palynological studies on weed flora of cultivable lands of Patiala district (Punjab). – *J. Palynol.* **16**: 85-105.
- , Kumari, S., Shoree, S. P. & Sagoo, M. S. 1978: Cytological studies in certain Bicarpellatae from north and central India. – *J. Cytol. Genet.* **13**: 99-106.
- Bittrich, V. 1986: Untersuchungen zu Merkmalsbestand, Gliederung und Abgrenzung der Unterfamilie *Mesembryanthemoideae* (*Mesembryanthemaceae* Fenzl). – *Mitt. Inst. Allg. Bot. Hamburg* **21**: 5-116.

- Blanche, C. & Molero, J. 1987: The genus *Halopeplis* Ung.-Sternb. (*Salicorniaceae*) in the Iberian peninsula. – Collect. Bot. (Barcelona) **17**: 67-77.
- Borgen, L. 1980: Chromosome numbers of Macaronesian flowering plants III. – Bot. Macaron **7**: 67-76.
- Chaudhary, S. A. 1999: Flora of the Kingdom of Saudi Arabia **1**. – Riyadh.
- & Al-Jowaid, A. A. A. 1999: Vegetation of the Kingdom of Saudi Arabia. – Riyadh.
- Cole, M. J. 1962: Interspecific relationships and intraspecific variation of *Chenopodium album* L. in Britain. II. The chromosome numbers of *C. album* L. and other species. – Watsonia **5**: 117-122.
- Collenette, S. 1998: A checklist of botanical species in Saudi Arabia. – West Sussex.
- 1999: Wildflowers of Saudi Arabia. – Riyadh.
- Darlington, D. & La Cour, L. F. 1976: The handling of chromosomes, ed. 6. – London.
- Degraeve, N. 1980: Étude de diverses particularités Caryotypiques des genres *Silene*, *Lychnis* et *Melandrium*. – Bol. Soc. Brot., ser. 2, **53**: 595-643.
- Delestaing, N. 1954: Contribution à l'étude cytologique du genre *Salvia*. – Rev. Cytol. Biol. Vég. **15**: 195-236.
- Díaz Lifante, Z. 1991: *Asphodelus cirerae*, a forgotten species of *Asphodelus* sect. *Verinea* (*Liliaceae*). Morphological, palynological, karyological and ecogeographical characterization. – Flora Medit. **1**: 87-109.
- 1992: Karyological studies in *Asphodelaceae* and *Anthericaceae*. I. Chromosome numbers in *Asphodelus* and *Anthericum* from N Africa. – Willdenowia **22**: 143-148.
- & Valdés, B. 1996: Revision del género *Asphodelus* L. (*Asphodelaceae*) en el Mediterráneo occidental. – Boissiera **52**.
- , Luque, T. & Santa Barbara, C. 1992: Chromosome numbers of plants collected during Iter Mediterraneum II in Israel. – Bocconeia **3**: 229-250.
- Fedorov, A. A. (ed.) 1969: Hromosomnye čisla cvetkovykh rastenij [Chromosome numbers in flowering plants]. – Leningrad.
- García, C., Pastor, J. & Luque, T. 1989: Contribucion al estudio cariologico del genero *Rumex* (*Polygonaceae*). – Acta Bot. Malacit. **14**: 129-140.
- Ge, C.-J. & Lou, P. 1990: Cytological study on *Datura inermis* and *D. innoxia*. – J. Shandong Coll. Tradit. Chin. Med. **14**: 66-67.
- George, S. M. & Bhavandan, K. V. 1993: Cytological studies in some species of *Cassia* from south India. – J. Cytol. Genet. **28**: 1-5.
- Gill, L. S. & Husaini, S. W. 1986: Cytological observations in *Leguminosae* from southern Nigeria. – Willdenowia **15**: 521-527.
- Giusti, L. 1964: Notas citotaxonomicas sobres *Chenopodium album* L. en Argentina. – Darwinia **13**: 486-505.
- Goldblatt, P. (ed.) 1981, 1984, 1985, 1988: Index to plant chromosome numbers 1975-1978, 1979-1981, 1982-1983, 1984-1985. – Monogr. Syst. Bot. Missouri Bot. Gard. **5**, **8**, **13**, **23**.
- & Johnson, D. E. (ed.) 1990, 1991, 1994, 1996: Index to plant chromosome numbers 1986-1987, 1988-1989, 1990-1991, 1992-1993. – Monogr. Syst. Bot. Missouri Bot. Gard. **30**, **40**, **51**, **58**.
- Greizerstein, E. J. & Poggio, L. 1992: Estudios citogeneticos de seis hybridos interspecificos de *Amaranthus* (*Amaranthaceae*). – Darwiniana **31**: 159-165.
- Hekmat-Shoar, H. & Manafi, H. 1982: Reports. – [In: Löve, Á. (ed.), IOPB chromosome number reports LXXV]. – Taxon **31**: 361.
- Hilu, K. W. 1979: Reports. – [In: Löve, Á. (ed.), IOPB chromosome number reports LXIV]. – Taxon **28**: 395.
- Husaini, S. W. H. & Iwo, G. A. 1990: Cytomorphological studies in some weedy species of the family *Solanaceae* from Jos Plateau, Nigeria. – Feddes Repert. **101**: 41-47.
- Jacobson, P. 1965: An improved squashed-slide freezer. – Stain Technol. **40**: 63-65.

- Khatoon, S. 1991: Polyploidy in the flora of Pakistan – an analytical study. – Ph. D. thesis, University of Karachi.
- & Ali, S. I. 1982: Chromosome numbers of some plants of Pakistan. – *Pakistan J. Bot.* **14**: 117-129.
- Kliphuis, E. & Barkoudah, Y. I. 1977: Chromosome numbers in some Syrian angiosperms. – *Acta Bot. Neerl.* **26**: 239-249.
- & Wieffering, J. H. 1972: Chromosome numbers of some angiosperms from the South of France. – *Acta Bot. Neerl.* **21**: 598-604.
- Koul, A. K. & Wakhlu, A. K. 1976: Chromosome numbers of 52 dicot species of Kashmir. – *Chromosome Inform. Serv.* **21**: 4-6.
- , Wafai, B. A. & Wakhlu, A. K. 1976: Studies on the genus *Gagea* III. Sporogenesis, early embryology and endosperm development in hexaploid *Gagea stipitata*. – *Phytomorphology* **26**: 255-263.
- , Wakhlu, A. K. & Karihaloo, J. L. 1976: Chromosome numbers of some flowering plants of Jammu (Western Himalyas) II. – *Chromosome Inform. Serv.* **20**: 32-33.
- Kumari, S. & Bir, S. S. 1990: Karyomorphological evolution in *Papilionaceae*. – *J. Cytol. Genet.* **25**: 173-219.
- Ledingham, G. F. 1960: Chromosome numbers in *Astragalus* and *Oxytropis*. – *Canad. J. Genet. Cytol.* **2**: 119-128.
- Lessani, H. & Chariat-Panahi, S. 1979: Reports. – [In: Löve, Á. (ed.), IOPB chromosome number reports LXV]. – *Taxon* **28**: 635-636.
- Levan, A., Fredga, K. & Sandberg, A. A. 1964: Nomenclature for centromeric position on chromosomes. – *Hereditas* **52**: 201-220.
- Lomonosova, M. N. & Krasnikov, A. A. 1993: Chromosome numbers in some members of the *Chenopodiaceae*. – *Bot. Žurn. (Moscow & Leningrad)* **78**: 158-159.
- Loon, J. C. van & Jong, H. de 1978: Reports. – [In: Löve, Á. (ed.), IOPB chromosome number reports LIX]. – *Taxon* **27**: 56-61.
- Lorz, A., 1937: Cytological investigations on five chenopodiaceous genera with special emphasis on chromosome morphology and somatic doubling in *Spinacia*. – *Cytologia* **8**: 241-276.
- Ma, X. H., Qin, R. L. & Xing, W. B. 1985: Chromosome observation of twenty species of drug plants in Xingjiang. – *Acta Bot. Bor.-Occid. Sinica* **5**: 149-154.
- Mandaville, J. P. 1990: Flora of Eastern Saudi Arabia. – London.
- Mehra, P. N. & Malik, C. P. 1963: Cytology of some Indian *Chenopodiaceae*. – *Caryologia* **16**: 67-84.
- Migahid, A. M. 1978: Flora of Saudi Arabia. – Riyadh.
- Miller, A. G. & Cope, T. A. 1996: Flora of the Arabian Peninsula and Socotra **1**. – Edinburgh.
- Moore, R. J. (ed.) 1973, 1974, 1977: Index to plant chromosome numbers 1967-1971, 1972, 1973-1974. – *Regnum Veg.* **90**, **91**, **96**.
- Munshi, A. H. 1983: Reports. – [In: Löve, Á. (ed.), IOPB chromosome number reports LXXIX]. – *Taxon* **32**: 322.
- Murin, A. & Chaudhri, I. I. 1970: Reports. – [In: Löve, Á. (ed.), IOPB chromosome number reports XXVI]. – *Taxon* **19**: 267.
- Nafanailova, I. I. & Zakirova, R. O. 1991: Caryological research of some representative of *Lamiaceae* Lindl. – *Izv. Akad. Nauk Kazahsk. SSR, Ser. Biol.* **2**: 71-72.
- Paiva, J. & Leitão, M. T. 1989: Numeros cromosomicos para alguns taxa da Africa tropical II. – *Bol. Soc. Brot., ser. 2*, **62**: 117-130.
- Palomino, G., Viveros, R. & Bye, Jr., R. A. 1988: Cytology of five Mexican species of *Datura* L. (*Solanaceae*). – *SouthW. Naturalist* **33**: 85-90.
- , Segura, M. D., Bye, R. & Mercado, P. R. 1990: Cytogenetic distinction between *Teloxys* and *Chenopodium* (*Chenopodiaceae*). – *SouthW. Naturalist* **35**: 351-353.
- Patudin, A. V., Yurtsev, V. N. & Pakaln, D. A. 1975: Chromosome number in some species of *Salvia* L. (*Lamiaceae*). – *Bot. Žurn. (Moscow & Leningrad)* **60**: 529-534.

- Podlech, D. 1986: Chromosomenstudien an Pflanzen des Saharo-Sindischen Trockengebietes. – Mitt. Bot. Staatssamml. München **22**: 5-20.
- & Bader, O. 1974: Chromosomenstudien an afghanischen Pflanzen, II. – Mitt. Bot. Staatssamml. München **11**: 457-488.
- & Dieterle, A. 1969: Chromosomenstudien an afghanischen Pflanzen. – *Candollea* **24**: 185-243.
- Queiros, M. 1975: Contribuição para o conhecimento citotaxonomico das *Spermatophyta* de Portugal II. *Chenopodiaceae*. – Bol. Soc. Brot., ser. 2, **49**: 121-142.
- Renard, R., Lambinon, J., Reekmans, M., Veeken, P. van der & Govaert, M. 1983: Nombres chromosomiques de quelques angiospermes du Rwanda, du Burundi et du Kenya. – Bull. Jard. Bot. Nat. Belg. **53**: 342-377.
- Ruiz Rejon, C., Lanca, G., Cueto, M., Lozano, R. & Ruiz Rejon, M. 1990: *Asphodelus tenuifolius* and *A. fistulosus* (*Liliaceae*) are morphologically, genetically and biologically different species. – Pl. Syst. Evol. **169**: 1-12.
- Salvik, B., Jarolimova, V. & Chrtek, J. 1993: Chromosome counts of some plants from Cyprus. – *Candollea* **48**: 221-230.
- Schwarzová, T. 1986: Chromosome numbers of some species of the genus *Chenopodium* L. from localities in Czechoslovakia. – Acta Fac. Rerum Nat. Univ. Comen. **33**: 37-40.
- Sinha, A. K. 1991: Biosystematic studies in two species of *Datura*. – Proc. Indian Sci. Cong. Assoc. **78**: 83.
- Subramanian, D. 1988: Cytological studies of some mangrove flora of Tamilnadu. – *Cytologia* **53**: 87-92.
- Tanaka, R. & Tanaka, A., 1980: Karyomorphological studies on halophytic plants. 1. Some taxa of *Chenopodium*. – *Cytologia* **45**: 257-269.
- Tandon, S. L. & Tawakley, M. 1970: Reports. – [In: Löve, Á. (ed.), IOPB chromosome number reports XXVI]. – *Taxon* **19**: 268-269.
- Uotila, P., 1973: Chromosome counts in the genus *Chenopodium* L. from SE Europe and SW Asia. – Ann. Bot. Fenn. **10**: 337-340.
- Yakovleva, S. V. 1933: Caryological investigations on some *Salvias*. – Trudy Prikl. Bot., Ser. 2, Genet. Rast. **5**: 207-213.
- Yeh, M. S., Yuasa, H. & Maekawa, F. 1986: Chromosome numbers in the *Leguminosae*. – Sci. Rep. Res. Inst. Evol. Biol. **3**: 57-71.
- Zakirova, R. O. & Nafanailova, I. I. 1988: Chromosome numbers in members of some families of the Kazakhstan flora. – Bot. Žurn. (Moscow & Leningrad) **73**: 452-453.
- Zeybek, N., Tokur, S., Akbulut, I. & Mert, H. H. 1977: Chromosomenzahlen von drei Salzpflanzen ans Westanatolien. – Ber. Schweiz. Bot. Ges. **87**: 60-62.

Addresses of the authors:

Dr T. A. Al-Turki & S. F. Mehmood, Natural Resources and Environment Research Institute, King Abdul Aziz City for Science & Technology, P.O. Box 6086, Riyadh 11442, Saudi Arabia; e-mail: talturki@kacst.edu.sa

Dr S. A. Filfilan, College of Science, King Saud University, Riyadh, Saudi Arabia.

Table 1. Karyotype analysis of five different metaphases of *Alhagi camelorum*.
 L/S = long / short arm ratio, P.O.C. = position of centromere, M, m = median, sm = submedian.

Karyotype number	Parameters [µm]	Pair # 1	Pair # 2	Pair # 3	Pair # 4	Pair # 5	Pair # 6	Pair # 7	Pair # 8								
		1	2	3	4	5	6	7	8								
1.	Short arm (S)	2.19	2.48	1.30	1.50	1.51	1.43	1.79	1.61	1.39	1.11	1.65	1.82	1.23	1.52	1.44	0.92
	Long arm (L)	3.42	2.66	3.81	3.56	3.39	3.35	2.64	2.70	2.82	2.80	2.25	1.90	2.07	1.73	1.65	1.12
	Total length	5.61	5.14	5.11	5.06	4.90	4.78	4.43	4.31	4.21	3.91	3.90	3.72	3.30	3.25	3.09	2.04
	L/S	1.56	1.07	2.93	2.37	2.24	2.34	1.47	1.67	2.03	2.52	1.36	1.04	1.68	1.14	1.14	1.22
	P. O. C.	m	m	sm	sm	sm	sm	m	m	m	sm	sm	m	m	m	m	m
2.	Short arm (S)	2.18	2.48	1.31	1.50	1.52	1.43	1.80	1.62	1.37	1.11	1.66	1.82	1.24	1.51	1.43	0.93
	Long arm (L)	3.43	2.64	3.82	3.55	3.38	3.34	2.65	2.70	2.80	2.81	2.27	1.90	2.06	1.72	1.64	1.12
	Total length	5.61	5.12	5.13	5.05	4.90	4.77	4.45	4.32	4.17	3.92	3.93	3.72	3.30	3.23	3.07	2.05
	L/S	1.57	1.06	2.92	2.36	2.22	2.33	1.47	1.66	2.64	2.53	1.36	1.04	1.66	1.14	1.14	1.20
	P. O. C.	m	m	sm	sm	sm	sm	m	m	m	sm	sm	m	m	m	m	m
3.	Short arm (S)	2.19	2.47	1.29	1.49	1.51	1.44	1.78	1.63	1.40	1.11	1.65	1.81	1.22	1.52	1.45	0.92
	Long arm (L)	3.43	2.66	3.81	3.54	3.39	3.37	2.63	2.72	2.83	2.80	2.25	1.89	2.06	1.73	1.66	1.12
	Total length	5.62	5.13	5.10	5.03	4.90	4.81	4.41	4.35	4.23	3.91	3.90	3.70	3.28	3.25	3.11	2.04
	L/S	1.56	1.07	2.95	2.37	2.24	2.34	1.47	1.67	2.02	2.52	1.36	1.04	1.68	1.14	1.14	1.22
	P. O. C.	m	m	sm	sm	sm	sm	m	m	m	sm	sm	m	m	m	m	m
4.	Short arm (S)	2.18	2.47	1.32	1.51	1.50	1.43	1.77	1.62	1.39	1.10	1.64	1.81	1.24	1.53	1.44	0.91
	Long arm (L)	3.42	2.63	3.83	3.57	3.40	3.35	2.65	2.71	2.82	2.79	2.24	1.90	2.08	1.74	1.65	1.11
	Total length	5.60	5.10	5.15	5.08	4.90	4.78	4.42	4.33	4.21	3.89	3.88	3.71	3.32	3.27	3.09	2.02
	L/S	1.56	1.06	2.90	2.36	2.26	2.34	1.49	1.67	2.03	2.53	1.36	1.04	1.67	1.13	1.13	1.21
	P. O. C.	m	m	sm	sm	sm	sm	m	m	m	sm	sm	m	m	m	m	m
5.	Short arm (S)	2.19	2.47	1.31	1.51	1.52	1.44	1.81	1.61	1.38	1.12	1.65	1.83	1.23	1.51	1.43	0.91
	Long arm (L)	3.42	2.65	3.81	3.55	3.39	3.36	2.66	2.70	2.81	2.81	2.25	1.91	2.07	1.72	1.64	1.13
	Total length	5.61	5.12	5.12	5.06	4.91	4.80	4.47	4.31	4.19	3.93	3.90	3.74	3.30	3.23	3.07	2.04
	L/S	1.56	1.07	2.90	2.35	2.35	2.23	1.46	1.67	2.03	2.51	1.36	1.04	1.68	1.14	1.14	1.24
	P. O. C.	m	m	sm	sm	sm	sm	m	m	m	sm	sm	m	m	m	m	m
Mean length	5.61	5.13	5.19	5.06	4.90	4.79	4.43	4.32	4.21	3.91	3.90	3.72	3.30	3.25	3.09	2.04	
Standard error	0.003	0.008	0.009	0.008	0.002	0.006	0.01	0.008	0.006	0.006	0.004	0.006	0.006	0.006	0.006	0.004	
Total chromosome length:	66.7 µm; Range of mean length of individual chromosomes: 5.6-2.0 µm																
Karyotype formula:	2n=16 = B6 + C4 + F5 + I1																

Table 2. Karyotype analysis of five different metaphases of *Astragalus abyssinicus*.

L/S = long / short arm ratio, P.O.C. = position of centromere, M, m = median, sm = submedian.

Karyotype number	Parameters [μm]	Pair # 1		Pair # 2		Pair # 3		Pair # 4		Pair # 5		Pair # 6		Pair # 7		Pair # 8	
		1	2	3	4	5	6	7	8	9	10	11	12	13	14	15	16
1.	Short arm (S)	3.37	3.17	1.19	1.19	1.15	1.13	1.74	1.95	1.90	1.82	1.46	1.77	1.49	1.34	1.54	1.52
	Long arm (L)	3.60	3.40	3.33	3.22	2.97	2.97	2.31	2.05	2.07	2.12	2.44	1.83	2.06	2.04	1.79	1.67
	Total length	6.97	6.57	4.52	4.41	4.12	4.10	4.05	4.00	3.97	3.94	3.90	3.60	3.55	3.38	3.33	3.19
	L/S	0.94	1.07	2.80	2.70	2.58	2.63	1.32	1.05	1.09	1.65	1.67	1.03	1.38	1.52	1.16	1.10
	P. O. C.	m	m	sm	sm	sm	sm	m	m	m	m	m	m	m	m	m	m
2.	Short arm (S)	3.41	3.10	1.18	1.19	1.17	1.14	1.73	1.95	1.90	1.81	1.45	1.78	1.50	1.35	1.53	1.51
	Long arm (L)	3.63	3.38	3.32	3.21	2.98	2.95	2.34	2.04	2.08	2.13	2.46	1.84	2.07	2.03	1.80	1.68
	Total length	7.04	6.48	4.50	4.40	4.15	4.09	4.07	3.99	3.98	3.94	3.91	3.62	3.57	3.38	3.33	3.19
	L/S	1.06	1.09	2.81	2.69	2.54	2.58	1.35	1.05	1.09	1.17	1.69	1.03	1.38	1.50	1.17	1.11
	P. O. C.	m	m	sm	sm	sm	sm	m	m	m	m	m	m	m	m	m	m
3.	Short arm (S)	3.35	3.19	1.20	1.18	1.16	1.13	1.74	1.93	1.91	1.81	1.46	1.79	1.49	1.35	1.55	1.52
	Long arm (L)	3.59	3.39	3.34	3.21	2.99	2.96	2.33	2.02	2.05	2.12	2.45	1.85	2.05	2.05	1.78	1.68
	Total length	6.94	6.58	4.54	4.39	4.15	4.09	4.07	3.95	3.96	3.93	3.91	3.64	3.54	3.40	3.33	3.20
	L/S	1.07	1.06	2.78	2.72	2.57	2.62	1.34	1.05	1.07	1.17	1.67	1.03	1.37	1.52	1.15	1.10
	P. O. C.	m	m	sm	sm	sm	sm	m	m	m	m	m	m	m	m	m	m
4.	Short arm (S)	3.36	3.21	1.18	1.18	1.15	1.12	1.75	1.94	1.93	1.84	1.47	1.77	1.48	1.33	1.55	1.50
	Long arm (L)	3.60	3.43	3.35	3.23	2.98	2.97	2.31	2.07	2.07	2.13	2.44	1.83	2.04	2.02	1.79	1.65
	Total length	6.96	6.64	4.53	4.41	4.13	4.09	4.06	4.01	4.00	3.97	3.91	3.60	3.52	3.35	3.34	3.15
	L/S	1.07	1.07	2.83	2.73	2.59	2.65	1.32	1.06	1.07	1.15	1.65	1.03	1.38	1.52	1.15	1.10
	P. O. C.	m	m	sm	sm	sm	sm	m	m	m	m	m	m	m	m	m	m
5.	Short arm (S)	3.36	3.13	1.21	1.19	1.16	1.14	1.76	1.95	1.92	1.82	1.45	1.76	1.49	1.33	1.54	1.51
	Long arm (L)	3.59	3.42	3.35	3.21	2.97	2.96	2.29	2.04	2.06	2.12	2.43	1.82	2.06	2.03	1.80	1.67
	Total length	6.95	6.55	4.56	4.40	4.13	4.10	4.05	3.99	3.98	3.94	3.88	3.58	3.55	3.36	3.34	3.18
	L/S	1.06	1.09	2.76	2.69	2.56	2.59	1.30	1.05	1.07	1.16	1.67	1.03	1.38	1.52	1.17	1.10
	P. O. C.	m	m	sm	sm	sm	sm	m	m	m	m	m	m	m	m	m	m
Mean length	6.97	6.56	4.53	4.40	4.14	4.10	4.10	3.99	3.98	3.94	3.90	3.61	3.55	3.37	3.33	3.18	
Standard error	0.018	0.026	0.01	0.004	0.006	0.003	0.005	0.01	0.006	0.007	0.006	0.01	0.008	0.009	0.003	0.009	
Total chromosome length:	69.3 μm ; Range of mean length of individual chromosomes: 7.0-3.1 μm																
Karyotype formula:	2n=16 = B4 + C4 + F8																

Table 3. Karyotype analysis of five different metaphases of *Datura innoxia*.
 L/S = long / short arm ratio, P. O. C. = position of centromere, M, m = median, sm = submedian.

Karyo- type	Parameters [µm]	Pair # 1	Pair # 2	Pair # 3	Pair # 4	Pair # 5	Pair # 6	Pair # 7	Pair # 8	Pair # 9	Pair # 10	Pair # 11	Pair # 12												
		1	2	3	4	5	6	7	8	9	10	11	12	13	14	15	16	17	18	19	20	21	22	23	24
1.	Short arm (S)	2.64	2.28	2.31	2.59	1.75	1.53	2.46	2.45	2.49	2.49	2.34	2.43	2.22	1.73	1.66	1.75	1.49	1.99	1.34	1.49	0.92	1.00	1.39	1.32
	Long arm (L)	3.88	3.87	3.41	2.88	3.72	3.84	2.83	2.83	2.68	2.64	2.68	2.49	2.67	2.90	2.80	2.68	2.52	2.01	2.24	1.94	2.46	2.16	1.42	1.37
	Total length	6.52	6.15	5.72	5.47	5.37	5.28	5.17	5.13	5.02	4.92	4.89	4.63	4.46	4.43	4.01	4.00	3.58	3.43	3.38	3.16	2.81	2.81	2.69	
	L/S	1.46	1.69	1.47	1.11	2.12	2.50	1.15	1.15	1.07	1.06	1.14	1.02	1.20	1.67	1.68	1.53	1.69	1.01	1.67	1.30	2.67	2.16	1.02	1.69
	P. O. C.	m	m	m	m	sm	sm	m	m	m	m	m	m	m	m	m	m	m	m	m	m	sm	sm	m	m
2.	Short arm (S)	2.65	2.27	2.30	2.61	1.76	1.54	2.45	2.45	2.50	2.48	2.33	2.42	2.21	1.73	1.65	1.75	1.50	1.99	1.33	1.48	0.93	1.01	1.38	1.31
	Long arm (L)	3.87	3.87	3.40	2.89	3.72	3.83	2.82	2.84	2.69	2.64	2.68	2.48	2.66	2.91	2.81	2.68	2.51	2.01	2.25	1.94	2.45	2.17	1.43	1.36
	Total length	6.52	6.14	5.70	5.50	5.48	5.37	5.27	5.29	5.19	5.12	5.01	4.90	4.87	4.64	4.16	4.43	4.01	4.00	3.58	3.42	3.38	3.18	2.81	2.67
	L/S	1.46	1.70	1.47	1.10	2.11	2.48	1.15	1.16	1.07	1.06	1.15	1.02	1.20	1.68	1.70	1.53	1.24	1.01	1.69	1.31	2.63	2.14	1.03	1.03
	P. O. C.	m	m	m	m	sm	sm	m	m	m	m	m	m	m	m	m	m	m	m	m	m	sm	sm	m	m
3.	Short arm (S)	2.63	2.26	2.30	2.57	1.74	1.52	2.45	2.43	2.49	2.46	2.32	2.44	2.20	1.72	1.65	1.74	1.48	1.99	1.35	1.47	0.91	1.00	1.39	1.31
	Long arm (L)	3.88	3.86	3.41	2.86	3.73	3.83	2.83	2.82	2.67	2.62	2.67	2.50	2.67	2.90	2.80	2.69	2.51	2.00	2.24	1.93	2.46	2.15	1.41	1.37
	Total length	6.51	6.12	5.71	5.43	5.47	5.35	5.28	5.25	5.16	5.08	4.99	4.94	4.87	4.62	4.45	4.43	3.99	3.99	3.59	3.40	3.37	3.15	2.80	2.68
	L/S	1.47	1.70	1.48	1.11	2.14	2.51	1.15	1.16	1.07	1.06	1.15	1.02	1.21	1.68	1.69	1.54	1.69	1.00	1.65	1.31	2.70	2.15	1.01	1.04
	P. O. C.	m	m	m	m	sm	sm	m	m	m	m	m	m	m	m	m	m	m	m	m	m	sm	sm	m	m
4.	Short arm (S)	2.63	2.28	2.32	2.58	1.76	1.54	2.47	2.46	2.49	2.47	2.35	2.42	2.23	1.73	1.66	1.73	1.49	1.98	1.33	1.48	0.92	0.99	1.38	1.33
	Long arm (L)	3.87	3.87	3.43	2.87	3.70	3.85	2.82	2.84	2.68	2.63	2.67	2.49	2.69	2.89	2.79	2.68	2.52	2.01	2.23	1.93	2.46	2.17	1.42	1.38
	Total length	6.50	6.15	5.75	5.45	5.46	5.39	5.29	5.30	5.17	5.10	5.02	4.91	4.92	4.62	4.45	4.41	4.01	3.99	3.56	3.41	3.38	3.16	2.80	2.71
	L/S	1.47	1.69	1.47	1.11	2.10	2.50	1.14	1.15	1.07	1.06	1.14	1.02	1.20	1.67	1.68	1.55	1.69	1.01	1.67	1.30	2.67	2.19	1.02	1.03
	P. O. C.	m	m	m	m	sm	sm	m	m	m	m	m	m	m	m	m	m	m	m	m	m	sm	sm	m	m
5.	Short arm (S)	2.64	2.27	2.32	2.60	1.74	1.53	2.46	2.46	2.48	2.48	2.34	2.42	2.21	1.74	1.64	1.74	1.49	1.98	1.34	1.49	0.92	1.01	1.39	1.32
	Long arm (L)	3.89	3.86	3.41	2.89	3.73	3.84	2.82	2.84	2.67	2.65	2.68	2.48	2.67	2.91	2.79	2.67	2.52	2.00	2.24	1.95	2.45	2.16	1.42	1.37
	Total length	6.53	6.13	5.73	5.49	5.47	5.37	5.28	5.30	5.15	5.13	5.02	4.90	4.88	4.65	4.43	4.41	4.01	3.98	3.58	3.44	3.37	3.17	2.81	2.69
	L/S	1.47	1.70	1.46	1.11	2.14	2.50	1.14	1.15	1.07	1.06	1.14	1.02	1.21	1.67	1.70	1.53	1.69	1.01	1.67	1.30	2.66	2.13	1.02	1.03
	P. O. C.	m	m	m	m	sm	sm	m	m	m	m	m	m	m	m	m	m	m	m	m	m	sm	sm	m	m

Mean length 6.52 6.14 5.72 5.47 5.37 5.28 5.28 5.17 5.11 5.01 4.91 4.89 4.63 4.39 4.42 4.01 3.99 3.58 3.42 3.38 3.16 2.81 2.69
 Standard error 0.005 0.006 0.009 0.013 0.003 0.006 0.004 0.009 0.007 0.01 0.006 0.007 0.009 0.006 0.006 0.005 0.004 0.004 0.005 0.007 0.002 0.005 0.002 0.002 0.007
 Total chromosome length: 110 µm; Range of mean length of individual chromosomes: 6.5-2.6 µm
 Karyotype formula: 2n=24 = B2 + C16 + E2 + F2 + I2

Table 4. Karyotype analysis of five different metaphases of *Molikiopsis ciliata*.
 L/S = long / short arm ratio, P.O.C. = position of centromere, M, m = median, sm = submedian

Karyotype number	Parameters [µm]	Pair # 1		Pair # 2		Pair # 3		Pair # 4		Pair # 5		Pair # 6	
		1	2	3	4	5	6	7	8	9	10	11	12
1.	Short arm (S)	2.78	2.44	2.20	2.32	1.82	1.84	1.84	1.79	1.94	1.50	1.43	1.23
	Long arm (L)	3.04	3.05	3.19	2.97	3.17	3.15	2.65	2.55	2.38	2.65	2.66	2.63
	Total length	5.82	5.49	5.39	5.29	4.99	4.99	4.49	4.34	4.32	4.23	4.09	3.86
	L/S	1.09	1.25	1.45	1.28	1.74	1.71	1.44	1.42	1.23	1.67	1.86	2.14
	P. O. C.	m	m	m	m	sm	sm	m	m	m	m	sm	sm
2.	Short arm (S)	2.79	2.44	2.21	2.33	1.81	1.85	1.84	1.77	1.95	1.50	1.42	1.23
	Long arm (L)	3.06	3.04	3.20	2.95	3.18	3.16	2.65	2.57	2.39	2.64	2.65	2.62
	Total length	5.85	5.48	5.41	5.28	4.99	5.01	4.49	4.34	4.34	4.14	4.07	3.85
	L/S	1.09	1.24	1.44	1.26	1.75	1.71	1.44	1.45	1.22	1.76	1.86	2.13
	P. O. C.	m	m	m	m	sm	sm	m	m	m	m	sm	sm
3.	Short arm (S)	2.78	2.45	2.22	2.31	1.83	1.84	1.85	1.78	1.95	1.49	1.43	1.22
	Long arm (L)	3.05	3.05	3.19	2.97	3.17	3.15	2.67	2.54	2.38	2.64	2.66	2.64
	Total length	5.83	5.50	5.41	5.28	5.00	4.99	4.52	4.32	4.33	4.13	4.09	3.86
	L/S	1.09	1.24	1.44	1.28	1.73	1.71	1.44	1.43	1.22	1.77	1.86	2.16
	P. O. C.	m	m	m	m	sm	sm	m	m	m	m	sm	sm
4.	Short arm (S)	2.80	2.43	2.20	2.33	1.82	1.83	1.83	1.80	1.94	1.50	1.44	1.22
	Long arm (L)	3.06	3.06	3.18	2.96	3.16	3.14	2.65	2.56	2.38	2.65	2.65	2.62
	Total length	5.86	5.49	5.38	5.29	4.98	4.97	4.48	4.36	4.32	4.15	4.15	3.84
	L/S	1.09	1.26	1.44	1.27	1.74	1.71	1.45	1.42	1.22	1.76	1.84	2.14
	P. O. C.	m	m	m	m	sm	sm	m	m	m	m	sm	sm
5.	Short arm (S)	2.77	2.45	2.19	2.31	1.82	1.85	1.85	1.79	1.93	1.51	1.44	1.24
	Long arm (L)	3.04	3.04	3.18	2.98	3.17	3.16	2.64	2.55	2.37	2.64	2.66	2.64
	Total length	5.81	5.49	5.37	5.29	4.99	5.01	4.49	4.34	4.30	4.15	4.10	3.88
	L/S	1.09	1.24	1.29	1.29	1.74	1.71	1.43	1.42	1.23	1.74	1.84	2.13
	P. O. C.	m	m	m	m	sm	sm	m	m	m	m	sm	sm
Mean length	5.83	5.49	5.40	5.28	4.99	4.99	4.50	4.33	4.32	4.15	4.09	3.86	
Standard error	0.007	0.004	0.008	0.002	0.002	0.01	0.007	0.005	0.007	0.02	0.005	0.005	
Total chromosome length: 52.3 µm; Range of mean length of individual chromosomes: 5.8-3.8 µm													
Karyotype formula: 2n=12 = B3 + C8 + E1													

Table 5. Karyotype analysis of five different metaphases of *Sesuvium sesuviodes*.
 L/S = long / short arm ratio, P.O.C. = position of centromere, M, m = median, sm = submedian.

Karyotype number	Parameters [µm]	Pair # 1		Pair # 2		Pair # 3		Pair # 4		Pair # 5		Pair # 6		Pair # 7		Pair # 8	
		1	2	3	4	5	6	7	8	9	10	11	12	13	14	15	16
1.	Short arm (S)	2.06	1.94	1.87	1.68	1.33	1.51	1.59	1.59	1.43	1.39	1.34	1.14	1.17	1.35	1.30	1.12
	Long arm (L)	2.34	2.31	1.88	1.94	2.27	1.67	1.59	1.59	1.73	1.75	1.72	1.87	1.75	1.35	1.32	1.26
	Total length	4.40	4.25	3.75	3.62	3.60	3.18	3.18	3.18	3.16	3.14	3.06	3.01	2.92	2.70	2.62	2.38
	L/S	1.13	1.19	1.00	1.15	1.92	1.10	1.00	1.00	1.21	1.26	1.28	1.64	1.49	1.00	1.01	1.12
	P.O.C.	m	m	M	m	m	m	M	M	m	m	m	m	m	M	m	m
2.	Short arm (S)	2.05	1.96	1.86	1.67	1.34	1.52	1.60	1.59	1.42	1.40	1.34	1.15	1.17	1.36	1.30	1.13
	Long arm (L)	2.35	2.33	1.88	1.95	2.29	1.68	1.60	1.60	1.78	1.76	1.72	1.89	1.75	1.36	1.32	1.24
	Total length	4.40	4.29	3.74	3.62	3.63	3.20	3.20	3.19	3.20	3.16	3.06	3.04	2.92	2.72	2.62	2.37
	L/S	1.14	1.18	1.01	1.16	1.70	1.10	1.00	1.01	1.25	1.25	1.28	1.64	1.49	1.00	1.01	1.09
	P.O.C.	m	m	m	m	m	m	M	m	m	m	m	m	m	M	m	m
3.	Short arm (S)	2.07	1.95	1.88	1.69	1.33	1.50	1.59	1.55	1.41	1.39	1.31	1.15	1.16	1.35	1.29	1.12
	Long arm (L)	2.36	2.32	1.87	1.96	2.26	1.67	1.59	1.57	1.74	1.76	1.72	1.86	1.75	1.35	1.32	1.26
	Total length	4.43	4.27	3.77	3.65	3.59	3.17	3.18	3.12	3.15	3.15	3.03	3.01	2.91	2.70	2.61	2.38
	L/S	1.14	1.19	1.00	1.15	1.69	1.11	1.00	1.01	1.23	1.26	1.31	1.62	1.50	1.00	1.02	1.12
	P.O.C.	m	m	M	m	m	m	M	m	m	m	m	m	m	M	m	m
4.	Short arm (S)	2.05	1.94	1.89	1.67	1.35	1.52	1.58	1.58	1.43	1.39	1.33	1.14	1.15	1.34	1.31	1.11
	Long arm (L)	2.34	2.31	1.90	1.93	2.27	1.68	1.59	1.58	1.74	1.75	1.71	1.88	1.76	1.35	1.32	1.25
	Total length	4.39	4.25	3.79	3.60	3.62	3.20	3.17	3.16	3.17	3.14	3.04	3.02	2.91	2.69	2.63	2.36
	L/S	1.14	1.19	1.00	1.15	1.68	1.10	1.00	1.00	1.22	1.26	1.28	1.64	1.53	1.01	1.01	1.12
	P.O.C.	m	m	M	m	m	m	M	M	m	m	m	m	m	M	m	m
5.	Short arm (S)	2.06	1.95	1.88	1.68	1.34	1.51	1.57	1.59	1.43	1.38	1.35	1.13	1.16	1.34	1.30	1.11
	Long arm (L)	2.35	2.32	1.89	1.94	2.27	1.68	1.58	1.59	1.73	1.77	1.74	1.86	1.76	1.36	1.33	1.27
	Total length	4.41	4.27	3.77	3.62	3.61	3.19	3.15	3.18	3.16	3.15	3.09	2.99	2.92	2.70	2.63	2.38
	L/S	1.14	1.19	1.00	1.15	1.69	1.11	1.01	1.00	1.21	1.28	1.29	1.65	1.52	1.01	1.02	1.14
	P.O.C.	m	m	M	m	m	m	M	M	m	m	m	m	m	M	m	m
Mean length	4.41	4.27	3.76	3.62	3.61	3.19	3.18	3.17	3.17	3.15	3.06	3.01	2.92	2.70	2.62	2.37	
Standard error	0.007	0.008	0.009	0.008	0.007	0.006	0.008	0.012	0.009	0.004	0.01	0.008	0.003	0.005	0.004	0.004	
Total chromosome length:	52.1 µm; Range of mean length of individual chromosomes: 4.4-2.3 µm																
Karyotype formula:	2n=16 = C2 + F10 + I4																

Table 6. Karyotype analysis of five different metaphases of *Rumex dentatus*.
 L/S = long / short arm ratio, P.O.C. = position of centromere, M, m = median, sm = submedian.

Karyo- type	Pair #1		Pair #2		Pair #3		Pair #4		Pair #5		Pair #6		Pair #7		Pair #8		Pair #9		Pair #10		
	1	2	3	4	5	6	7	8	9	10	11	12	13	14	15	16	17	18	19	20	
1.	Short arm (S)	1.98	2.09	1.98	1.89	1.68	1.79	1.70	1.52	1.70	1.52	1.69	1.36	1.40	1.22	1.24	1.35	1.40	1.30	1.31	1.36
	Long arm (L)	2.70	2.34	2.36	2.34	2.36	2.06	2.13	2.09	1.76	1.88	1.70	2.01	1.85	1.99	1.93	1.78	1.67	1.72	1.68	1.60
	Total length	4.68	4.43	4.34	4.23	4.04	3.85	3.83	3.61	3.46	3.40	3.39	3.37	3.25	3.21	3.17	3.13	3.07	3.02	2.99	2.96
	L/S	1.36	1.12	1.19	1.23	1.40	1.15	1.25	1.37	1.03	1.24	1.01	1.48	1.32	1.63	1.56	1.32	1.19	1.32	1.28	1.18
	P. O. C.	m	m	m	m	m	m	m	m	m	m	m	m	m	m	m	m	m	m	m	m
2.	Short arm (S)	1.97	2.09	1.97	1.90	1.67	1.79	1.71	1.52	1.71	1.51	1.70	1.35	1.41	1.20	1.23	1.35	1.41	1.30	1.32	1.34
	Long arm (L)	2.71	2.33	2.35	2.34	2.35	2.06	2.12	2.08	1.75	1.88	1.71	2.02	1.84	1.99	1.92	1.77	1.68	1.71	1.67	1.61
	Total length	4.68	4.42	4.32	4.24	4.02	3.85	3.83	3.60	3.46	3.39	3.41	3.37	3.25	3.19	3.15	3.12	3.09	3.01	2.99	2.95
	L/S	1.37	1.11	1.19	1.23	1.40	1.15	1.24	1.37	1.02	1.24	1.01	1.49	1.30	1.65	1.56	1.31	1.19	1.31	1.26	1.20
	P. O. C.	m	m	m	m	m	m	m	m	m	m	m	m	m	m	m	m	m	m	m	m
3.	Short arm (S)	1.99	2.07	1.99	1.88	1.69	1.78	1.69	1.51	1.69	1.51	1.68	1.36	1.41	1.21	1.24	1.34	1.40	1.29	1.32	1.36
	Long arm (L)	2.71	2.35	2.36	2.33	2.36	2.05	2.12	2.10	1.75	1.87	1.70	2.01	1.86	1.99	1.93	1.77	1.67	1.71	1.69	1.60
	Total length	4.70	4.42	4.35	4.21	4.05	3.83	3.81	3.61	3.44	3.38	3.38	3.37	3.27	3.20	3.17	3.11	3.07	3.00	3.01	2.96
	L/S	1.36	1.13	1.18	1.23	1.39	1.15	1.25	1.39	1.03	1.23	1.01	1.47	1.32	1.64	1.56	1.32	1.19	1.32	1.28	1.17
	P. O. C.	m	m	m	m	m	m	m	m	m	m	m	m	m	m	m	m	m	m	m	m
4.	Short arm (S)	1.98	2.09	1.98	1.89	1.68	1.79	1.69	1.51	1.72	1.52	1.68	1.34	1.40	1.20	1.25	1.36	1.39	1.30	1.30	1.35
	Long arm (L)	2.70	2.33	2.37	2.34	2.35	2.07	2.14	2.07	1.77	1.88	1.69	2.02	1.85	1.97	1.94	1.79	1.66	1.72	1.66	1.59
	Total length	4.68	4.42	4.35	4.23	4.03	3.86	3.83	3.58	3.49	3.40	3.37	3.36	3.25	3.17	3.19	3.15	3.05	3.02	2.96	2.94
	L/S	1.36	1.11	1.19	1.23	1.39	1.15	1.26	1.37	1.03	1.23	1.01	1.50	1.32	1.64	1.55	1.32	1.19	1.32	1.27	1.17
	P. O. C.	m	m	m	m	m	m	m	m	m	m	m	m	m	m	m	m	m	m	m	m
5.	Short arm (S)	1.97	2.08	1.98	1.90	1.67	1.78	1.70	1.53	1.71	1.53	1.68	1.35	1.39	1.21	1.23	1.36	1.40	1.31	1.30	1.35
	Long arm (L)	2.69	2.33	2.36	2.35	2.36	2.05	2.14	2.08	1.75	1.89	1.71	2.03	1.86	1.98	1.93	1.77	1.66	1.73	1.67	1.61
	Total length	4.66	4.41	4.34	4.25	4.03	3.83	3.84	3.61	3.46	3.42	3.39	3.38	3.25	3.19	3.16	3.13	3.06	3.04	2.97	2.96
	L/S	1.36	1.12	1.19	1.23	1.41	1.15	1.25	1.36	1.02	1.23	1.01	1.50	1.33	1.63	1.56	1.30	1.18	1.32	1.28	1.19
	P. O. C.	m	m	m	m	m	m	m	m	m	m	m	m	m	m	m	m	m	m	m	m
Mean length	4.68	4.42	4.34	4.23	4.03	3.84	3.83	3.60	3.46	3.40	3.39	3.37	3.25	3.19	3.17	3.13	3.07	3.02	2.98	2.95	
Standard error	0.006	0.003	0.006	0.007	0.005	0.006	0.005	0.006	0.008	0.007	0.007	0.003	0.004	0.007	0.007	0.007	0.006	0.007	0.009	0.004	

Continued on next page

Table 6 (continued). Karyotype analysis of five different metaphases of *Rumex dentatus*.

Karyo- type	Parameters [µm]	Pair # 11	Pair # 12	Pair # 13	Pair # 14	Pair # 15	Pair # 16	Pair # 17	Pair # 18	Pair # 19	Pair # 20										
		21	22	23	24	25	26	27	28	29	30	31	32	33	34	35	36	37	38	39	40
1.	Short arm (S)	1.08	1.23	1.20	1.08	1.32	1.15	1.26	0.94	1.20	1.19	1.10	1.02	1.09	1.00	1.11	0.90	0.97	1.05	1.02	0.78
	Long arm (L)	1.79	1.59	1.61	1.61	1.32	1.47	1.26	1.58	1.29	1.28	1.33	1.40	1.32	1.32	1.21	1.40	1.20	1.11	1.09	1.28
	Total length	2.87	2.82	2.81	2.69	2.64	2.62	2.52	2.52	2.49	2.47	2.43	2.42	2.41	2.32	2.32	2.30	2.17	2.16	2.11	2.06
	L/S	1.65	1.29	1.34	1.49	1.00	1.28	1.00	1.68	1.07	1.07	1.21	1.37	1.21	1.32	1.09	1.55	1.23	1.06	1.07	1.28
	P. O. C.	m	m	m	M	M	M	M	M	M	m	m	m	m	m	m	m	m	m	m	m
2.	Short arm (S)	1.09	1.24	1.22	1.09	1.30	1.14	1.26	0.95	1.20	1.18	1.10	1.01	1.10	1.01	1.11	0.89	0.96	1.04	1.00	0.77
	Long arm (L)	1.78	1.58	1.63	1.62	1.32	1.46	1.26	1.57	1.29	1.26	1.32	1.38	1.31	1.32	1.21	1.39	1.20	1.12	1.09	1.29
	Total length	2.87	2.82	2.85	2.71	2.64	2.60	2.52	2.52	2.49	2.44	2.42	2.39	2.41	2.33	2.32	2.28	2.16	2.16	2.09	2.06
	L/S	1.63	1.27	1.33	1.48	1.01	1.28	1.00	1.65	1.07	1.06	1.20	1.36	1.19	1.30	1.09	1.56	1.25	1.07	1.09	1.67
	P. O. C.	m	m	m	m	M	M	M	M	M	m	m	m	m	m	m	m	m	m	m	m
3.	Short arm (S)	1.07	1.24	1.19	1.07	1.32	1.16	1.24	0.93	1.21	1.18	1.09	1.00	1.09	1.00	1.10	0.90	0.97	1.03	1.02	0.78
	Long arm (L)	1.78	1.57	1.60	1.61	1.33	1.48	1.25	1.57	1.29	1.28	1.34	1.39	1.32	1.32	1.20	1.39	1.19	1.11	1.07	1.28
	Total length	2.85	2.81	2.79	2.68	2.65	2.64	2.49	2.50	2.50	2.46	2.43	2.39	2.41	2.32	2.30	2.29	2.16	2.14	2.09	2.06
	L/S	1.66	1.26	1.34	1.50	1.00	1.27	1.00	1.68	1.06	1.08	1.22	1.39	1.21	1.32	1.09	1.54	1.22	1.07	1.04	1.64
	P. O. C.	m	m	m	m	M	M	M	M	M	m	m	m	m	m	m	m	m	m	m	m
4.	Short arm (S)	1.10	1.22	1.20	1.08	1.32	1.15	1.26	0.92	1.20	1.17	1.10	1.02	1.08	1.01	1.10	0.91	0.97	1.06	1.01	0.78
	Long arm (L)	1.80	1.57	1.61	1.62	1.32	1.44	1.27	1.58	1.28	1.27	1.33	1.40	1.30	1.31	1.21	1.40	1.21	1.10	1.09	1.29
	Total length	2.90	2.79	2.81	2.70	2.64	2.59	2.57	2.50	2.48	2.44	2.43	2.42	2.38	2.32	2.31	2.31	2.18	2.16	2.10	2.07
	L/S	1.63	1.28	1.34	1.50	1.00	1.25	1.00	1.71	1.06	1.08	1.20	1.37	1.20	1.29	1.10	1.53	1.24	1.03	1.07	1.65
	P. O. C.	m	m	m	m	M	M	M	M	M	m	m	m	m	m	m	m	m	m	m	m
5.	Short arm (S)	1.08	1.23	1.21	1.09	1.31	1.13	1.26	0.93	1.21	1.19	1.11	1.00	1.08	1.01	1.11	0.90	0.96	1.01	1.02	0.79
	Long arm (L)	1.78	1.59	1.62	1.62	1.31	1.44	1.26	1.58	1.27	1.28	1.32	1.39	1.31	1.30	1.22	1.40	1.19	1.09	1.08	1.29
	Total length	2.86	2.82	2.83	2.71	2.62	2.57	2.52	2.51	2.48	2.47	2.43	2.39	2.39	2.31	2.33	2.30	2.15	2.10	2.10	2.08
	L/S	1.64	1.29	1.33	1.48	1.00	1.27	1.00	1.69	1.04	1.07	1.18	1.39	1.21	1.28	1.09	1.55	1.23	1.07	1.05	1.63
	P. O. C.	m	m	m	m	M	M	M	M	M	m	m	m	m	m	m	m	m	m	m	m
Mean length	2.87	2.81	2.82	2.70	2.64	2.60	2.52	2.51	2.49	2.46	2.43	2.40	2.40	2.32	2.32	2.30	2.16	2.14	2.10	2.07	
Standard error	0.008	0.006	0.01	0.006	0.005	0.012	0.013	0.005	0.004	0.007	0.002	0.007	0.006	0.003	0.005	0.005	0.005	0.012	0.004	0.004	
Total chromosome length:	120.5 µm; Range of mean length of individual chromosomes: 4.7-2.0 µm																				
Karyotype formula:	2n=40 = C5 + F13 + I22																				