

## **A New Species of Small Green Treefrog (Pelodyadidae: Litoria) from the Lakekamu Basin in Southern Papua New Guinea**

Authors: Richards, Stephen J., and Bickford, David

Source: Current Herpetology, 42(1) : 43-54

Published By: The Herpetological Society of Japan

URL: <https://doi.org/10.5358/hsj.42.43>

---

BioOne Complete ([complete.BioOne.org](https://complete.BioOne.org)) is a full-text database of 200 subscribed and open-access titles in the biological, ecological, and environmental sciences published by nonprofit societies, associations, museums, institutions, and presses.

Your use of this PDF, the BioOne Complete website, and all posted and associated content indicates your acceptance of BioOne's Terms of Use, available at [www.bioone.org/terms-of-use](https://www.bioone.org/terms-of-use).

Usage of BioOne Complete content is strictly limited to personal, educational, and non - commercial use. Commercial inquiries or rights and permissions requests should be directed to the individual publisher as copyright holder.

---

BioOne sees sustainable scholarly publishing as an inherently collaborative enterprise connecting authors, nonprofit publishers, academic institutions, research libraries, and research funders in the common goal of maximizing access to critical research.

# A New Species of Small Green Treefrog (Pelodyadidae: *Litoria*) from the Lakekamu Basin in Southern Papua New Guinea

STEPHEN J. RICHARDS<sup>1,\*</sup> AND DAVID BICKFORD<sup>2</sup>

<sup>1</sup>South Australian Museum, North Terrace, Adelaide, South Australia 5000, AUSTRALIA

<sup>2</sup>World Congress of Herpetology, Live Oak Canyon Rd., La Verne, California, USA

Zoobank LSID: A03DED9B-29EC-4477-9B08-7B78FF6D961E

**Abstract:** We describe a new species of very small (male body length 22.0–22.8 mm), green treefrog in the pelodyadid genus *Litoria* Tschudi from lowland rainforest on the southern margin of Papua New Guinea's central cordillera. The new species is morphologically most similar to *Litoria leucova*, a small green treefrog known only from the north-flowing Sepik River catchment in western Papua New Guinea. It differs from that species by having longer limbs (TL/SVL 0.56–0.60 vs. 0.53–0.55), a poorly defined (vs. prominent) tympanum, in having a distinct lemon yellow mid-lateral line, and in its unique advertisement call comprising a slowly repeated series of short clicks followed by a discrete group of pulses produced rapidly but with highly variable inter-pulse intervals. Although genetic data are not available, the new species' association with a fast-flowing rocky stream suggests that its relationships may lie with other torrent-dwelling *Litoria* species.

Key words: Advertisement calls; Frog; *Litoria lakekamu* sp. nov.; Morphology; Taxonomy

## INTRODUCTION

Pelodyadid treefrogs form a conspicuous component of frog communities associated with water bodies across the lowlands and foothills of New Guinea (Menzies, 2006). However, the island's fauna remains incompletely documented and recent studies have revealed numerous undescribed pelodyadid species (Oliver et al., 2008, 2019). Among these are a number of primarily green species

including large (SVL>60 mm) canopy-dwelling (Richards and Oliver, 2006; Richards et al., 2006; Kraus, 2018; Oliver et al., 2019) and small (SVL<30 mm) scansorial (Menzies et al., 2008) forms. Most species within the group are tightly affiliated with water bodies where they presumably lay eggs and their tadpoles develop.

Relationships among Australopapuan pelodyadid species remain unsettled (Duellman et al., 2016; Clulow and Swan, 2018; Dubois et al., 2021) and their resolution awaits publication of a comprehensive phylogenetic analysis. Small green pelodyadids in the Melanesian region include species that reproduce in tempo-

---

\* Corresponding author.

E-mail address: [steve.richards@samuseum.sa.gov.au](mailto:steve.richards@samuseum.sa.gov.au)

rary ponds and ditches in lowland savanna and forest habitats (e.g., relatives of *Litoria bicolor* (Gray, 1842); Menzies et al., 2008), species that occupy shallow seepages and slow-flowing streams in forest (e.g., *Litoria wapo-gaensis* Richards & Iskandar, 2001), and species that occupy fast-flowing mountain streams (e.g., *Litoria bulmeri* (Tyler, 1968) and *L. leucova* (Tyler, 1968); Tyler, 1968, Johnston and Richards, 1994).

Here we describe a new species of small green treefrog in the genus *Litoria* that was discovered during Conservation International's 1996 Rapid Assessment Program biodiversity survey of the Lakekamu Basin in southern Papua New Guinea (Allison et al., 1998). The new species is morphologically most similar to *Litoria leucova* and, like that species (Johnston and Richards, 1994), it occupies clear-flowing streams. However, genetic data are not available so its relationships within the genus cannot yet be determined. Based on the failure to detect the new species during extensive surveys of similar and suitable habitats in adjacent catchments (S. Richards, personal observation), we presume that this species may be endemic to a small portion of the island of New Guinea.

#### MATERIALS AND METHODS

We located frogs using head torches and by tracking advertisement calls at night. We fixed voucher specimens in 10% formalin and stored them in 70% ethanol. We deposited preserved animals in the South Australian Museum, Adelaide, Australia (SAMA), and we will also repatriate one paratype to the Papua New Guinea National Museum (PNGNM). We made measurements following the methods, terminology, and abbreviations of Tyler (1968) to the nearest 0.1 mm with callipers (SVL: body length from snout to vent, TL: tibia length from heel to convex surface of flexed knee, HL: head length, from tip of snout to posterior margin of tympanum, HW: head width at widest point, normally across tympana) or a dissecting microscope fitted with an

optical micrometer (all other measurements); EN: distance from anterior corner of eye to posterior margin of naris, IN: internarial distance, between medial margins of external nares, EYE: horizontal diameter of eye, TYM: horizontal diameter of tympanum including tympanic annulus (the tympanum of this species is poorly defined so measurements are approximate), 3FD: transverse diameter of disc of Finger 3, 3FP: transverse diameter of penultimate phalanx of Finger 3, 4TD: transverse diameter of disc of Toe 4 and 4TP: transverse diameter of penultimate phalanx of Toe 4.

We determined sex by examination of vocal slits and nuptial pads, and by observation of calling. We recorded calls using a Sony Professional Walkman recorder with an Electret ECM-Z200 Condenser Microphone. We analysed calls using Avisoft-SASLab Pro v4.34 (<http://www.avisoft.com/>) following procedures and terminology recommended by Köhler et al. (2017). We calculated audiospectrograms with fast-Fourier transform (FFT) of 512 points, 50% overlap for long call series, and 256 points, 87.5% overlap for individual notes, using Hamming windows.

We examined comparative material at the Natural History Museum, London (BMNH), Naturalis, Leiden (RMNH), South Australian Museum, Adelaide (SAMA), Natural Sciences Resource Centre of the University of Papua New Guinea, Port Moresby (UP), Museum Zoologicum Bogoriense, Cibinong (MZB) and the Queensland Museum, Brisbane (QM). We extracted additional information for comparisons from published papers on the relevant groups (e.g., Tyler, 1968; Menzies et al., 2008). FN refers to original field collection numbers of S.J. Richards.

The new species described herein is assigned to the genus *Litoria* sensu Tyler and Davies (1978) based on having a horizontal pupil and lacking pigmentation on the nictitating membrane, pending a compelling phylogenetic based resolution of generic boundaries within Pelodyadidae.

## SYSTEMATICS

*Litoria lakekamu* sp. nov.

(English name: Lakekamu pygmy treefrog)

*Diagnosis*

The new species is distinguished from all other *Litoria* by the following unique combination of characters: size very small (SVL of four males 20.0–22.8 mm, females unknown); dorsum in life predominantly green; vomerine teeth absent; tympanum indistinct; finger webbing extensive, reaching distal edge of subarticular tubercle at base of penultimate phalanx on outer edge of Finger 3 and inner edge of Finger 4; finger discs slightly larger than or same size as toe discs; webbing on toes extending nearly to base of all discs except Toe 4 where it reaches midway between subarticular tubercle at base of penultimate phalanx and disc on both sides of digit; dermal fringes on limbs and below vent absent; pigmentation on nictitating membrane restricted to scattered flecks at dorsal margin; advertisement call a series of short (0.017–0.053 s) distinctly pulsed rasping notes repeated at 2.1–6.5 s intervals, followed by a discrete group of rapidly repeated pulses with highly variable inter-pulse intervals.

*Etymology*

The specific name *lakekamu* is a noun in apposition referring to the type and only known locality of this species.

*Holotype*

SAMA R70113 (FN: Biol Survey Field Series 11623), adult male, Sapoi River adjacent to Ivimka Research Station (7.735° S, 146.496° E; 120 m asl), Lakekamu Basin, Gulf Province, Papua New Guinea, collected by Stephen Richards, David Bickford, and Geordie Torr on 3 December 1996.

*Paratypes*

SAMA R70114 (FN: Biol Survey Field Series 11624), R70115 (FN: USNM 209310), PNGNM (FN: Biol Survey Field Series

11625), three adult males, same data as holotype.

*Description of holotype*

Adult male with vocal slits and small pale brown nuptial pads. Body slender, limbs moderately long (TL/SVL 0.56); head broad (HW/SVL 0.36), snout broadly rounded in dorsal aspect (Fig. 1A), blunt, near vertical, protruding marginally beyond lower jaw in lateral aspect; canthus rostralis broadly rounded, slightly curved; loreal region steep, slightly concave; nares round, near top of snout and closer to tip of snout than to eye, oriented anterolaterally, visible in dorsal aspect (Fig. 1A). Eyes large (EYE/SVL 0.15), clearly protruding in both dorsal and lateral aspects; constricted pupil horizontal. Pigmentation on nictitating membrane restricted to scattered flecks along dorsal edge of left membrane. Tympanum small (TYM/SVL < 0.05), annulus poorly defined, bordered dorsally by broad, poorly defined supratympanic fold. Vomeropalatines absent; tongue not free posteriorly, broad, heart shaped with distinct notch in posterior edge; vocal slits long, located laterally on floor of mouth, extending from behind angle of jaws to about halfway between angle of jaws and front of mouth. Nuptial excrescences very pale brown, elongate, extending 1.7 mm along proximal outer edge of first finger.

Fingers with relative lengths 3 > 4 > 2 > 1, webbing extending beyond distal edge of subarticular tubercle at base of penultimate phalanx on Finger 4 (distal subarticular tubercle), and to about distal subarticular tubercle on outer edge of Finger 3 before continuing as broad flange to base of disc. Distal subarticular tubercles low, that on Finger 3 partially bifid; remainder unilobed. Small narrow inner, and broad but low outer, metacarpal tubercles present (Fig. 1B). Toes with relative lengths 4 > 5 = 3 > 2 > 1, webbing extending nearly to base of discs on Toe 3 and Toe 5, and to midway between distal subarticular tubercle and disc on both sides of Toe 4. Subarticular tubercles low, poorly defined. Inner metatarsal tubercle small, elongate, poorly defined; outer metatarsal tubercle

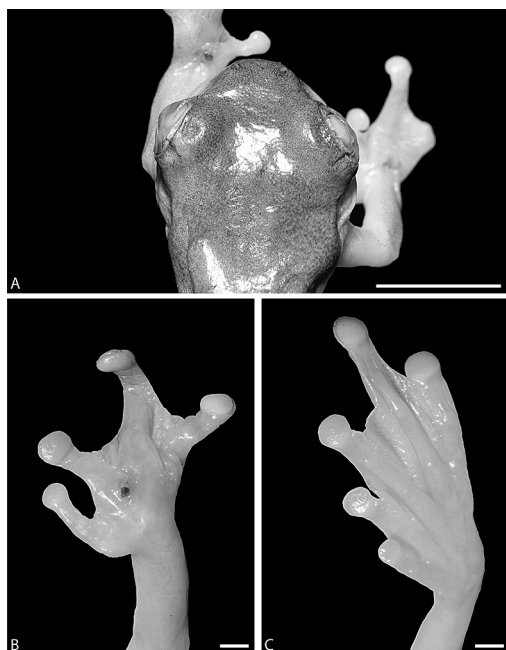


FIG. 1. Holotype of *Litoria lakekamu* sp. nov. (SAMA R70113) in preservative. A: dorsal view of head (scale bar=5 mm), B: palmar view of right hand, C: plantar view of right foot (scale bars =1 mm).

not detectable (Fig 1B). Tips of fingers and toes expanded into terminal discs, those of fingers slightly broader than those of toes (4TD/3FD 0.92), all with distinct marginal grooves. A small puncture wound present in centre of each hand.

Skin with orange-peel texture dorsally and laterally, including head; dorsal surfaces of limbs with numerous low tubercles; ventral surfaces granular. Limbs without dermal ornamentation, heels without tubercles or dermal spikes, surfaces around vent without raised tubercles.

#### *Colour of holotype in preservative*

Dorsal surfaces of body uniform grey with scattered darker grey flecks; lemon-yellow lateral line in life has faded to white, ventral surfaces to off-white. Green spots on limbs in life (see below) are no longer evident while dense brown peppering has become more intense

across all surfaces of limbs.

#### *Colour of the new species in life*

All specimens near-uniform green dorsally, white laterally and ventrally, with narrow but distinct lemon-yellow lateral stripe. The following extra details on colour in life are based on images of SAMA R70114 and PNGNM (FN 11625) taken in life shortly after capture (Fig. 2). Green dorsum of PNGNM (FN 11625) overlain with scattered small but distinct brown flecks, these less evident in SAMA R70114. Narrow lemon-yellow lateral line extends posteriorly from tip of snout along upper lip, below eye and tympanum continuing mid-laterally to groin, separating green of dorsum from white ventrolateral and ventral surfaces (Fig. 2). Limbs, including hidden surfaces of thighs, translucent with dense purplish-brown peppering, overlain on upper surfaces by lime green spots, these mostly restricted to surfaces of low tubercles. Green colour on arms restricted predominantly to areas below elbow; fingers, toes, and webbing translucent with scattered tiny purplish-brown spots. Iris creamy-white with scattered short veins of brown pigment, most dense in narrow rim around edge of pupil.

#### *Variation*

The type series is extremely uniform morphologically (Table 1). Body size of adult males 20.0–22.8 mm, females unknown. Dorsal colour consistently near uniform green in life, all specimens with lemon-yellow mid-lateral line. In preservative all specimens grey with fine darker grey flecks, variation restricted to degree of concentration of flecks into small blotches (small blotches most evident in PNGNM (FN 11625). Tongue nearly round in SAMA R70115 (vs. heart-shaped in holotype), nuptial pads of R70114–70115 present but barely detectable.

#### *Distribution and natural history*

*Litoria lakekamu* is to date known only from the Lakekamu Basin on the southern fringe of Papua New Guinea's central cordillera (Fig. 3).

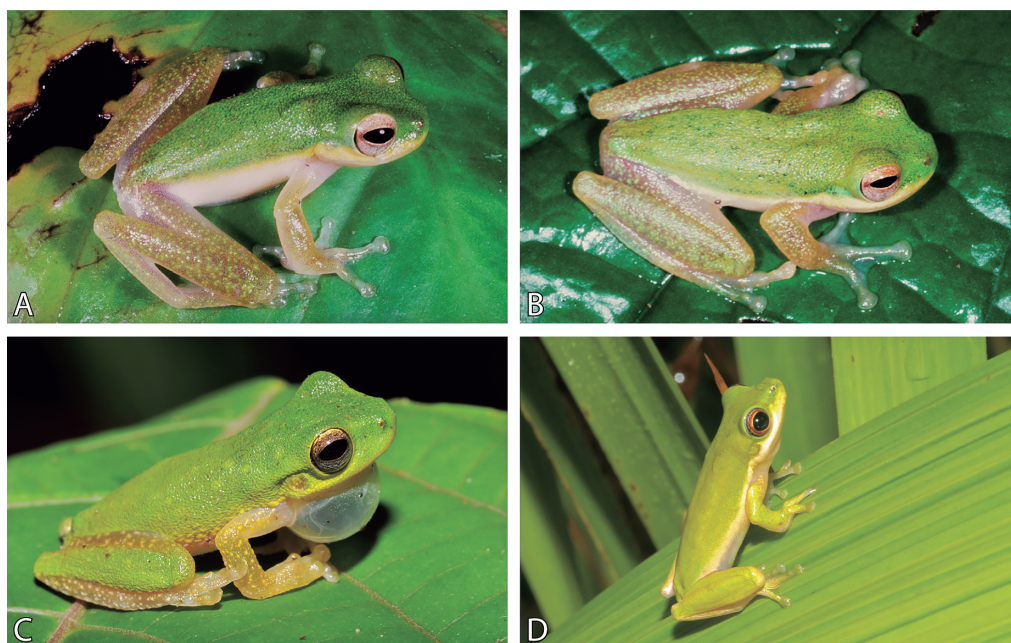


FIG. 2. Images in life of: (A) *Litoria lakekamu* sp. nov. paratype SAMA R70114, (B) *Litoria lakekamu* sp. nov. paratype PNGNM (FN: 11625), (C) *Litoria leucova* SAMA R71844 from the Sepik River catchment, northern Papua New Guinea, (D) *Litoria lodesdema* SAMA R64772 from New Britain Island, Papua New Guinea. Photographs by S. Richards.

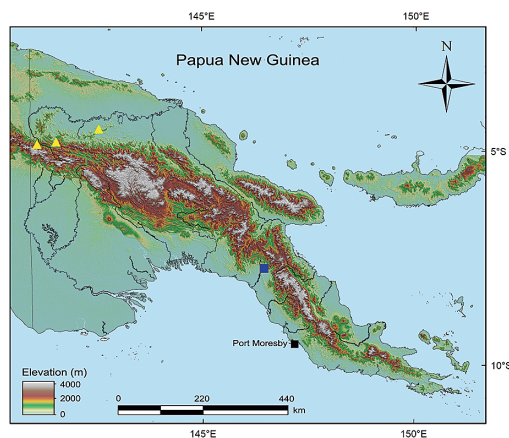


FIG. 3. Distribution of *Litoria lakekamu* sp. nov. (blue square), and its most similar congener *L. leucova* (yellow triangles).

The type series was collected from vegetation adjacent to or overhanging the Sapoi River which at the type locality is a large, clear,

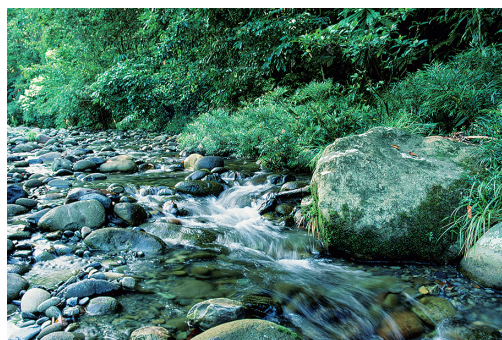


FIG. 4. Torrential stream habitat of *Litoria lakekamu* sp. nov. on the Sapoi River near Ivimka Camp, Lakekamu Basin, Gulf Province, Papua New Guinea. Males were calling from vegetation along the stream bank. Photograph by S. Richards.

rocky stream (Fig. 4) flowing through primary lowland forest. Other individuals were heard calling from about 10–15 m high in the lower canopy over the same stream.

TABLE 1. Measurements and proportions of *Litoria lakekamu* sp. nov. SAMA R70113 is the holotype. All specimens are adult males.

	SAMA R70113	SAMA R70114	SAMA R70115	PNGNM (FN 11625)	Mean	SD	Range
SVL	22.5	22.8	22.0	22.8	22.43	0.40	22.0–22.8
TL	12.6	13.5	13.3	13.4	13.13	0.47	12.6–13.5
HL	7.2	7.6	7.5	7.6	7.43	0.21	7.2–7.6
HW	8.0	8.0	7.7	8.2	7.90	0.17	7.7–8.0
EYE	3.3	3.2	3.0	3.2	3.17	0.15	3.0–3.3
TYM	0.8	1.0	1.0	1.0	0.93	0.12	1.0–1.0
EN	1.7	2.0	2.0	2.	1.90	0.17	1.7–2.0
IN	2.3	2.5	2.5	2.6	2.43	0.12	2.3–2.5
3FD	1.3	1.3	1.3	1.3	1.30	0.00	1.3–1.3
3FP	0.9	0.9	0.9	0.9	0.90	0.00	0.9–0.9
4TD	1.2	1.2	1.1	1.3	1.17	0.06	1.1–1.2
4TP	0.9	0.9	0.9	0.9	0.90	0.00	0.9–0.9
TL/SVL	0.56	0.59	0.60	0.59	0.59	0.02	0.56–0.60
EN/IN	0.74	0.80	0.80	0.77	0.77	0.03	0.74–0.80
EYE/SVL	0.15	0.14	0.14	0.14	0.14	0.01	0.14–0.15
HL/SVL	0.32	0.33	0.34	0.33	0.33	0.01	0.32–0.34
HW/SVL	0.36	0.35	0.35	0.36	0.35	0.00	0.35–0.36
HW/HL	1.11	1.05	1.03	1.08	1.06	0.04	1.03–1.11
4TD/3FP	0.92	0.92	0.85	1	0.92	0.06	0.85–1.00
4TD/4TP	1.33	1.33	1.22	1.44	1.30	0.06	1.22–1.33
3FD/3FP	1.44	1.44	1.44	1.44	1.44	0.00	1.44–1.44

#### Advertisement call

We recorded two complete call series produced by SAMA R70115 at a height of 3 m above the stream, and one series produced by an unvouchered animal at least 10 m high in a tree adjacent to the stream, all at an air temperature of 25.5°C. *Litoria lakekamu* produces two call types. Call type 1 is a single short, distinctly pulsed note repeated slowly in long series. This call type is here referred to as a short call. Call type 2 is longer than short calls and comprises a sequence of pulses produced at highly variable inter-pulse intervals resulting in the acoustic impression of a ‘spluttering’ sound. These calls do not contain clearly defined notes and are here referred to as long calls. Long calls always followed a series of short calls and, although sample size is small, additional calls with a similar structure were heard at the type locality. Detailed analysis is

restricted to the call series produced by SAMA R70115 due to the poor quality of the unvouchered call.

The three recorded call series consisted of seven, eight and 11 short calls produced at intervals of 2.1–6.5 s (0.28–0.48 calls/s, n=3) (Fig. 5). Each series of short calls was followed by a single long call. Total lengths of the three call series (including long calls) were 21.5, 29.4, and 45.2 s. Short calls (=notes) in the series analysed in more detail were 0.017–0.053 s long (mean=0.033, SD=0.010, n=18), and contained 4–8 pulses (mean=5.7, SD=1.3, n=18) produced at a rate of 100–312 pulses/s (mean=164.2, SD=47.01, n=18). The two long calls of sufficient quality for detailed analysis were much longer than short calls, lasting 1.6 and 1.7 s. They contained 34 and 32 pulses, respectively, uttered at a rate of 18.8 and 21.3 pulses/s. However, pulse interval in the two

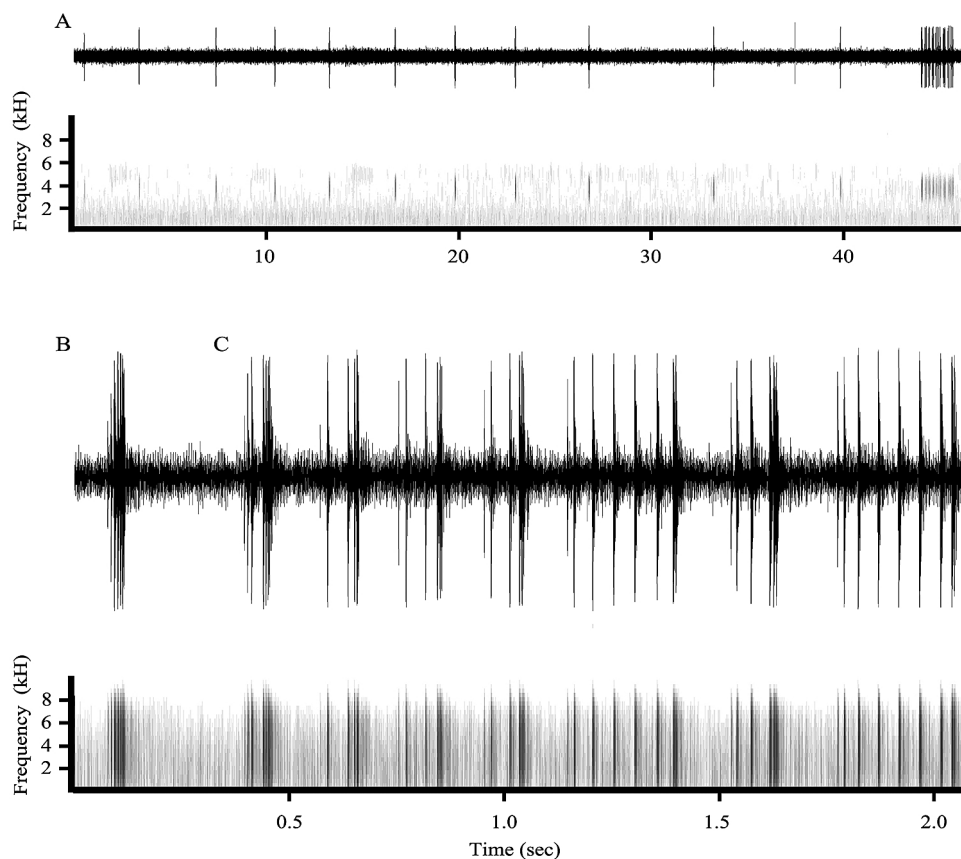


FIG. 5. Waveform (top) and spectrogram (bottom) of: (A) an entire call series containing 12 calls produced by *Litoria lakekamu* sp. nov. (SAMA R70115), (B) detail of the last short call illustrated in (A), and (C) detail of the terminal long call from that series. The interval between the last short call illustrated in (B) and the terminal call (C) has been reduced to aid comparison.

long calls was extremely variable, ranging from 0.0003 to 0.17 s resulting in the acoustic impression of a rapid series of spluttering clicks. Dominant frequency of short calls was 3560–3860 kHz (mean=3714.4, SD=85.76,  $n=18$ ), and that of the two long calls fell within this range (3759.5 and 3595 kHz). Fig. 5A illustrates a full call series and Fig. 5B–C illustrates the final short call and the following long call in that series, produced by SAMA R70115.

#### Comparisons

*Litoria lakekamu* sp. nov. is compared here with small (male SVL 20–30 mm), predominantly green New Guinean *Litoria* that are

known or presumed to breed in lentic water bodies as follows: It differs from *L. albolabris* (Wandolleck, 1911) and *L. mystax* (Van Kampen, 1906), both from the northern lowlands of New Guinea, in having longer limbs (TL/SVL 0.56–0.59 vs. 0.50–0.55 in *L. albolabris* and 0.54 in *L. mystax*; Tyler, 1968), and in lacking (vs. having) a prominent, short white bar below the eye; from New Guinean members of the *L. bicolor* (Gray, 1842) group (*L. bibonius* Kraus & Allison, 2004, *L. chloristona* Menzies, Richards & Tyler, 2008, *L. contrastens* (Tyler, 1968), *L. euryrnastes* Menzies, Richards & Tyler, 2008, *L. lodesdema* Menzies, Richards & Tyler, 2008, and *L. vira-*



*nula* Menzies, Richards & Tyler, 2008) (Tyler 1968; Kraus and Allison, 2004; Menzies et al. 2008), in having a moderately robust (vs. slender) body (Fig. 2D), with snout not projecting and near-vertical in lateral view (vs. projecting, distinctly rounded in lateral view) (Kraus and Allison, 2004; Menzies et al., 2008), and having (vs. lacking) a distinct lemon yellow mid-lateral line in life (Fig. 2D); from *L. christianbergmanni* Günther, 2008 in its smaller size (male SVL 20.0–22.8 mm vs. 26.9–31.2 mm in *L. christianbergmanni*), and white bar below eye lacking (vs. present in *L. christianbergmanni*) (Günther, 2008); from *L. chloronota* (Boulenger, 1911) by its smaller body size (males 27–32 mm in *L. chloronota*), and broader snout (EN/IN 0.74–0.80 vs. 0.63–0.71 in *L. chloronota*; Menzies, 1993); from members of the *L. gracilentia* (Peters, 1869) group (*L. aruensis* (Horst, 1883), *L. auae* Menzies & Tyler, 2004, *L. callista* Kraus, 2013, *L. elkeae* Günther & Richards, 2000, *L. eschata* Kraus & Allison, 2009, *L. kumae* Menzies & Tyler, 2004, and *L. robinsonae* Oliver, Stuart-Fox and Richards, 2008) in its smaller size (male SVL <23 mm vs. >25 mm) and lacking pale canthal and postocular stripes (vs. present: Menzies and Tyler, 2004; Oliver et al., 2008; Kraus and Allison, 2009; Kraus, 2013); from *L. havina* Menzies, 1993 in lacking (vs. having) a fleshy rostral spike in males; from *L. rubrops* Kraus & Allison, 2004 in having dorsum without (vs. with) black or darker green speckling, and iris predominantly creamy white (vs. iris red in *L. rubrops*; Kraus and Allison, 2004); from *L. nigropunctata* (Meyer, 1875), *L. iris* (Tyler, 1962), *L. majikthise* Johnston & Richards, 1994, and *L. ollauro* Menzies, 1993, in its smaller size (male SVL <23 mm vs. >25 mm) and further from these species in having posterior surfaces of thighs translucent with purplish-grey spotting (vs. posterior of thighs blue, red, or yellow, sometimes blotched with white or purple) (Menzies, 1993); from *L. richardsi* Dennis & Cunningham, 2006 and *L. singadanae* Richards, 2005 in having a pigmented (vs. transparent) tympanic membrane (Dennis and

Cunningham, 2006; Richards, 2005); and from *L. verae* Günther, 2004 in lacking (vs. having) crenulated skin folds along outer margins of tarsi (Günther, 2004).

Among small, green, stream-dwelling *Litoria* the new species differs from *L. bulmeri* (Tyler, 1968) by its smaller size (males 20.0–22.8 mm vs. 29–34 mm SVL), and black lateral stripe absent (vs. present); from *L. longicrus* (Boulenger, 1911) in having dorsum slightly granular (vs. smooth), and in lacking (vs. having) a distinct white bar beneath the tympanum (Tyler, 1968), and from *L. wapogaensis* Richards & Iskandar, 2001 in its smaller size (males 20.0–22.8 mm vs. 30.5–33 mm SVL), lacking (vs. having) vomerine teeth and having (vs. lacking) a distinct lemon yellow mid-lateral line (Tyler, 1968; Richards and Iskandar, 2001). The new species is morphologically most similar to *L. leucova* (Tyler, 1968), a small (males 21.7–24 mm SVL; S. Richards, personal observation) green treefrog known from the northern slopes of New Guinea's central cordillera and from the Hunstein Mountains (Tyler, 1968; Johnston and Richards, 1994; Kraus and Allison, 2006; S. Richards, personal observation). It differs from that species by having longer limbs (TL/SVL 0.56–0.60 vs. 0.53–0.55; Johnston and Richards, 1994), a poorly defined (vs. prominent) tympanum, in having (vs. lacking) a distinct lemon yellow mid-lateral line (Figs. 2A–C), and in its unique advertisement call (Fig. 5). *Litoria lakekamu* and *L. leucova* both produce short and long calls but the short call of *L. lakekamu* is a distinctly pulsed note containing 4–8 pulses (vs. a single pulse in *L. leucova*) and two long calls of *L. lakekamu* contained 32 and 34 pulses and lasted 1.6–1.7 s (vs. 10 pulses in *L. leucova* and lasting 0.09 s); Johnston and Richards, 1994; S. Richards, personal observation).

#### *IUCN Status.*

*Litoria lakekamu* is known from a single location in primary lowland forest in southern Papua New Guinea. Although extensive areas of apparently suitable habitat remain in the

region, this species was not detected during numerous fauna surveys in the Kikori and Purari basins to the west between 2001 and 2017 (S. Richards, personal observations). Until this species' distribution, habitat requirements and potential threats have been better documented we recommend that it be listed as Data Deficient.

## DISCUSSION

The Lakekamu basin incorporates a large expanse of primary foothill and alluvial forest on the southern fringe of Papua New Guinea's central cordillera. The basin was the focus of intensive efforts during the 1990s to establish a protected area for both conservation and research (Allison et al., 1998). As part of these efforts, a survey conducted in 1996 to identify the region's biodiversity documented numerous undescribed species of flora and fauna and a number of these are still known only from the basin including the frogs *Callulops eremnosphax* Kraus & Allison, 2009, *Litoria robinsonae*, and the damselfly *Nososticta acuminata* Michalski, Richards & Theischinger, 2012 (Oliver et al., 2008; Kraus and Allison, 2009; Michalski et al., 2012).

*Litoria lakekamu* is the third new frog species to be described based on the collections of the 1996 Lakekamu basin survey. Its distribution remains poorly known, and intensive surveys in apparently suitable habitats to the west of Lakekamu in the catchments of the adjacent Purari and more distant Kikori rivers have failed to detect it or the other two frog species described recently from Lakekamu (Richards, 2002; S. Richards, personal observations). Nor have these species been reported from the more intensively surveyed lowland forests to the east near Port Moresby (Menzies, 2006). In addition, during the 1996 Lakekamu survey, we only detected these frogs from one small area of a single stream. Together these observations suggest that the forests of the Lakekamu basin may support a small assemblage of locally endemic frogs and that further species from the world's largest tropical island await

discovery and description.

*Litoria lakekamu* is amongst the smallest pelodyadid frogs currently known from New Guinea (Menzies, 2006). In its very small size and predominantly green dorsal coloration, it closely resembles *Litoria leucova*, a stream-breeding frog from northern New Guinea (Johnston and Richards, 1994; Kraus and Allison, 2006), and members of the lentic-breeding *Litoria bicolor* group (Menzies et al., 2008). The species' ecology suggests that it is more likely to be related to the clade of torrent-dwelling frogs including *L. leucova* (Richards et al., 2021), but this requires confirmation. This torrent-dwelling group is particularly diverse in the mountains of New Guinea but also contains a number of lowland forms. All of the specimens reported here were encountered along, and others were heard calling from the canopy above, a torrential, clear-flowing stream in primary forest. Collection of genetic material, and of additional information about this species' reproductive behaviour, is required to elucidate its relationships, habitat requirements, and ecology.

## ACKNOWLEDGMENTS

Fieldwork in Papua New Guinea was approved by the PNG National Research Institute and the PNG Department of Environment and Conservation (now the Conservation and Environment Protection Authority). We are particularly grateful to the landowners of the Ivimka area and Tekadu for their permission to work on their land. The Rapid Assessment Program (RAP) biodiversity survey in the Lakekamu Basin was a collaboration between the Wildlife Conservation Society (WCS) and Conservation International (CI) and we are most grateful to Andrew Mack and Banak Gamui (CI), Debra Wright (WCS), Geordie Torr and students of the 1996 Field Course on Biological Research, University of Papua New Guinea for their assistance during the survey. Export permits were provided by Barbara Roy from the PNG Department of Environment and Conservation. We thank Rose Singadan and

Paulus Kei (UPNG, Port Moresby), Mark Hutchinson, Carolyn Kovach and Dominic Capone (South Australian Museum, Adelaide), Pim Arntzen (Naturalis, Leiden), Barry Clark (Natural History Museum, London), Helen Kurniati and Mumpuni (MZB, Bogor) and Patrick Couper (QM, Brisbane) for access to specimens under their care. Lisa Capon kindly produced the figures. During preparation of this manuscript SJR was supported by a grant from Re:wild.

#### LITERATURE CITED

- CLULOW, S. AND SWAN, M. 2018. *A Complete Guide to Frogs of Australia*. Australian Geographic, Sydney.
- DENNIS, A. J. AND CUNNINGHAM, M. J. 2006. *Litoria richardsi* sp. nov., a new treefrog (Anura: Hylidae) from New Guinea. *Memoirs of the Queensland Museum* 52: 65–69.
- DUBOIS, A., OHLER, A., AND PYRON, A. 2021. New concepts and methods for phylogenetic taxonomy and nomenclature in zoology, exemplified by a new ranked cladonomy of recent amphibians (Lissamphibia). *Megataxa* 5: 1–738.
- DUELLMAN, W. E., MARION, A. B., AND HEDGES, S. B. 2016. Phylogenetics, classification, and biogeography of the treefrogs (Amphibia: Anura: Arboranae). *Zootaxa* 4104: 1–109.
- GÜNTHER, R. 2004. Two new treefrog species of the genus *Litoria* (Anura: Hylidae) from the west of New Guinea. *Zoologische Abhandlungen (Staatliches Museum für Tierkunde in Dresden)* 54: 163–175.
- GÜNTHER, R. 2008. Two new hylid frogs (Anura: Hylidae: *Litoria*) from western New Guinea. *Vertebrate Zoology* 58: 83–92.
- JOHNSTON, G. R. AND RICHARDS, S. J. 1994. A new species of *Litoria* (Anura: Hylidae) from New Guinea and redefinition of *Litoria leucova* (Tyler, 1968). *Memoirs of the Queensland Museum* 37: 273–280.
- KÖHLER, J., JANSEN, M., RODRÍGUEZ, A., KOK, P. J. R., TOLEDO, L. F., EMMRICH, M., GLAW, F., HADDAD, C. F. B., RÖDEL, M.-O., AND VENCES, M. 2017. The use of bioacoustics in anuran taxonomy: theory, terminology, methods and recommendations for best practice. *Zootaxa* 4251: 1–124.
- KRAUS, F. 2013. A new treefrog of the *Litoria gracilenta* group (Hylidae) from Papua New Guinea. *Proceedings of the Biological Society of Washington* 126: 151–160.
- KRAUS, F. 2018. Taxonomy of *Litoria graminea* (Anura: Hylidae), with descriptions of two closely related new species. *Zootaxa* 4457: 264–284.
- KRAUS, F. AND ALLISON, A. 2004. A new species of *Litoria* (Anura: Hylidae) from southeastern New Guinea. *Herpetologica* 60: 97–103.
- KRAUS, F. AND ALLISON, A. 2006. Range extensions for reptiles and amphibians along the northern versant of Papua New Guinea. *Herpetological Review* 37: 364–368.
- KRAUS, F. AND ALLISON, A. 2009. New species of frogs from Papua New Guinea. *Bishop Museum Occasional Papers* 104: 1–36.
- ALLISON, A., BICKFORD, D., RICHARDS, S. AND TORR, G. 1998. Herpetofauna. p. 58–62. In: Mack, L. (ed.) *A Biological Assessment of the Lakekamu Basin, Papua New Guinea. Rapid Assessment Program Working Paper Number 9*. Conservation International, Washington.
- MENZIES, J. I. 1993. Systematics of *Litoria iris* (Anura, Hylidae) and its allies in New-Guinea and a note on sexual dimorphism in the group. *Australian Journal of Zoology* 41: 225–255.
- MENZIES, J. I. 2006. *The Frogs of New Guinea and the Solomon Islands*. Pensoft Publishers, Sofia.
- MENZIES, J. I., RICHARDS, S. J., AND TYLER, M. J. 2008. Systematics of the Australo-Papuan tree frogs known as *Litoria bicolor* (Anura: Hylidae) in the Papuan Region. *Australian Journal of Zoology* 56: 257–280.
- MENZIES, J. I. AND TYLER, M. J. 2004. *Litoria gracilenta* (Anura: Hylidae) and related species in New Guinea. *Australian Journal of Zoology* 52: 191–214.
- MICHALSKI, J., RICHARDS, S. J., AND THEISCHINGER, G. 2012. An interesting new species of *Nososticta* Hagen from southern New Guinea (Odonata, Disparoneuridae). *Zootaxa* 3590: 73–78.
- OLIVER, P., RICHARDS, S. J., AND DONNELLAN, S. C. 2019. Two new species of treefrog (Pelodryidae: *Litoria*) from southern New Guinea elucidated by

- DNA barcoding. *Zootaxa* 4609: 469–484.
- OLIVER, P. M., STUART-FOX, D., AND RICHARDS, S. J. 2008. A new species of treefrog (Hylidae, *Litoria*) from the southern lowlands of New Guinea. *Current Herpetology* 27: 35–42.
- RICHARDS, S. J. 2002. *Rokrok: an Illustrated Field Guide to Frogs of the Kikori Integrated Conservation and Development Project Area of Papua New Guinea*. WWF-PNG, Port Moresby.
- RICHARDS, S. J. 2005. A new species of treefrog (Anura: Hylidae: *Litoria*) from the Huon Peninsula, Papua New Guinea. *Zootaxa* 1052: 29–39.
- RICHARDS, S. J. AND ISKANDAR, D. T. 2001. A new tree frog (Anura, Hylidae, *Litoria*) from the mountains of Irian Jaya, Indonesia. *Alytes* 18: 141–152.
- RICHARDS, S. J. AND OLIVER, P. M. 2006. Two new species of large green canopy-dwelling frogs (Anura: Hylidae: *Litoria*) from Papua New Guinea. *Zootaxa* 1295: 41–60.
- RICHARDS, S. J., OLIVER, P., DAHL, C., AND TJATURADI, B. 2006. A new species of large green treefrog (Anura: Hylidae: *Litoria*) from northern New Guinea. *Zootaxa* 1208: 57–68.
- RICHARDS, S. J., TJATURADI, B., KREY, K., AND DONNELLAN, S. C. 2021. A new stream-dwelling frog of the genus *Litoria* Tschudi, 1838 (Anura: Pelodytidae) from Salawati Island, Indonesia. p. 19–33. In: D. Telnov, M. V. L. Barclay, and O. S. G. Pauwels (eds.), *Biodiversity, Biogeography and Nature Conservation in Wallacea and New Guinea. Vol. IV*. The Entomological Society of Latvia, Riga.
- TYLER, M. J. 1968. Papuan hylid frogs of the genus *Hyla*. *Zoologische Verhandelingen* 96: 1–203.
- TYLER M. J. AND DAVIES, M. M. 1978. Species-groups within the Australopapuan hylid frog genus *Litoria* Tschudi. *Australian Journal of Zoology, Supplemental Series* 27: 1–47.
- Litoria albolabris* (Wandolleck, 1911). Papua New Guinea: Sandaun Province, Aitape, SAMA R4947 (syntype).
- Litoria auae* Menzies & Tyler, 2004. Papua New Guinea: Gulf Province, Purari River, near McDowell Is, UP2490 (holotype), SAMA R57262–63 (paratypes).
- Litoria bulmeri* (Tyler, 1968). Papua New Guinea: Madang Province, Upper Aunjung Valley, Schrader Mtns, SAMA R5625 (holotype).
- Litoria chloristona* Menzies, Richards & Tyler, 2008. Papua New Guinea: National Capital District, Waigani, SAMA R9122a; Central Province, Brown River, SAMA R13251a–c; Gulf Province, Kopi, SAMA R63502–9 (all paratypes).
- Litoria chloronota* (Boulenger, 1911). Indonesia: West Papua Province, Arfak Mountains, BM1947.2.31.20 (syntype), UP8380–8.
- Litoria contrastens* (Tyler, 1968). Papua New Guinea: Eastern Highlands Province, Barabuna, SAMA R5845 (holotype), SAMA R6450 (paratype); Western Highlands Province, Noreikova, SAMA R5847 (five specimens).
- Litoria elkeae* Günther & Richards, 2000. Indonesia: Papua Province, Siewa River, MZB Amph.3866–9, QMJ70490–2 (all paratypes).
- Litoria eurynastes* Menzies, Richards & Tyler, 2008. Indonesia: Papua Province, Siewa River, MZB Amph.14651–5; Papua New Guinea: Manus Province, Lorengau, SAMA R63497–501 (all paratypes).
- Litoria havina* Menzies, 1993. Papua New Guinea: Western Province, Ok Kam, UP7281 (holotype); Western Province, Ok Ma, UP 8406–7 (paratypes); Western Province, Ok Kam, SAMA R38596–7; Southern Highlands Province, Agogo Range, SAMA R60173–7.
- Litoria kumae* Menzies & Tyler, 2004. Papua New Guinea: Southern Highlands Province, Tari, UP3108 (holotype), SAMA R52760–61 (paratypes).
- Litoria leucova* (Tyler, 1968). Papua New Guinea: Sandaun Province, Mt Stolle, SAMA R44091–2, UP8604–6, upper Sepik River basin, SAMA R71844.

---

Accepted: 28 October 2022

#### APPENDIX

Specimens examined for morphological comparisons.

*Litoria lodesdema* Menzies, Richards & Tyler, 2008. Papua New Guinea: East New Britain Province, Kerevat, SAMAR7046–47, R7049, R7055–56, R7058–59, R8439a, b., Vouvou SAMA R64772.

*Litoria longicrus* (Boulenger, 1911). Indonesia: Papua Province, Wendessi, BM 1947.2.22.60–61 (syntypes).

*Litoria majikthise* Johnston & Richards, 1994. Papua New Guinea: Western Province, Tabubil, SAMA R44093 (holotype), UP6734, 7305–9, 8501–8, 8602–3, SAMA R44094–44101 (all paratypes).

*Litoria modica* (Tyler, 1968). Papua New Guinea: Eastern Highlands Province, Oruge, MCZ 52856 (holotype), MCZ 52857–52861, SAMA R8108 (paratypes).

*Litoria mucro* Menzies, 1993. Papua New Guinea: East Sepik Province, Near Raut Village, UP2741–3, 2745–56 (paratypes).

*Litoria mystax* (van Kampen, 1906). Indonesia: Papua Province, Moaif, RMNH 4632 (holotype).

*Litoria nigropunctata* (Meyer, 1875). Indonesia: Papua Province, Yapen Island, Mount Waira, ZMB 63977, Yapen Island near Kontiunae, SAMA R61799.

*Litoria richardsi* Dennis & Cunningham,

2006. Papua New Guinea: Western Province, Tabubil, SAMA R60283 (holotype); Upper Fly River, SAMA R71602–5; Indonesia: Papua Province, Tiri River, Mamberamo Drainage, MZB Amph.11823 (paratype).

*Litoria robinsonae* Oliver, Stuart-Fox & Richards, 2008. Papua New Guinea: Gulf Province, Ivimka, Lakekamu Basin, SAMA R55527 (holotype), R55528–9 (paratypes).

*Litoria singadanae* Richards, 2005. Papua New Guinea: Morobe Province, Ridge above Surim Camp, eastern Finisterre Mountains, SAMA R60172 (holotype), UP 9968, SAMA R60171 (paratypes).

*Litoria verae* Günther, 2004. Indonesia: Border of Papua and West Papua Provinces, Wondiwoi Mountains, ZMB 62384.

*Litoria viranula* Menzies, Richards & Tyler, 2008. Papua New Guinea: Western Province, Bensbach River, SAMA R63487 (holotype), Wegamu, SAMA R63486–92 (paratypes); Indonesia: Papua Province, Merauke, SAMA R13666a–c, R13667a–d.

*Litoria wapogaensis* Richards & Iskandar, 2001. Indonesia: Papua Province, Wapoga River, MZB Amph.3873 (holotype), MZB Amph.3874–76, SAMA R54595–98 (paratypes).