

## **Coraux des Récifs du Lagon Nord-Ouest de la Grande-Terre de Nouvelle-Calédonie**

Authors: Fenner, Douglas, and Muir, Paul

Source: A Rapid Marine Biodiversity Assessment of the Coral Reefs of the Northwest Lagoon, between Koumac and Yandé, Province Nord, New Caledonia: 88

Published By: Conservation International

URL: <https://doi.org/10.1896/054.053.0115>

---

The BioOne Digital Library (<https://bioone.org/>) provides worldwide distribution for more than 580 journals and eBooks from BioOne's community of over 150 nonprofit societies, research institutions, and university presses in the biological, ecological, and environmental sciences. The BioOne Digital Library encompasses the flagship aggregation BioOne Complete (<https://bioone.org/subscribe>), the BioOne Complete Archive (<https://bioone.org/archive>), and the BioOne eBooks program offerings ESA eBook Collection (<https://bioone.org/esa-ebooks>) and CSIRO Publishing BioSelect Collection (<https://bioone.org/csiro-ebooks>).

Your use of this PDF, the BioOne Digital Library, and all posted and associated content indicates your acceptance of BioOne's Terms of Use, available at [www.bioone.org/terms-of-use](http://www.bioone.org/terms-of-use).

Usage of BioOne Digital Library content is strictly limited to personal, educational, and non-commercial use. Commercial inquiries or rights and permissions requests should be directed to the individual publisher as copyright holder.

---

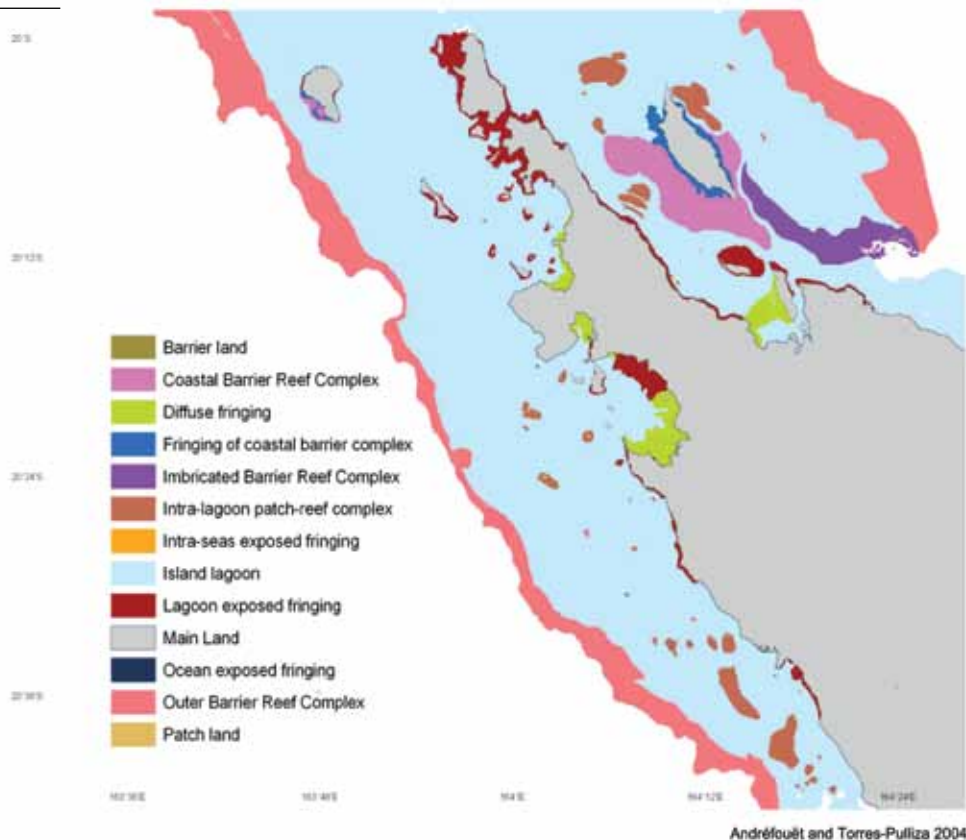
BioOne is an innovative nonprofit that sees sustainable scholarly publishing as an inherently collaborative enterprise connecting authors, nonprofit publishers, academic institutions, research libraries, and research funders in the common goal of maximizing access to critical research.

## Maps and Photos

MAP A



MAP B



**Map A.** Map of New Caledonia depicting survey area with location of RAP sites **Map B.** Map of the main reef types in the survey region from the Atlas des récifs corallines de Nouvelle-Calédonie (Andréfouët et Torres-Pulliza 2004).

**Carte A.** Carte de la Nouvelle-Calédonie. Un cadre signale la zone de l'inventaire marin tandis que les stations d'échantillonnage sont représentées par un pictogramme. **Carte B.** Carte des principaux types de récifs présents dans la zone de l'inventaire établie à partir de l'atlas des récifs coralliens de la Nouvelle-Calédonie (Andréfouët et Torres-Pulliza 2004).



Roger Grace

Lizard fish on a colony of hard coral  
Poisson-Lizard sur une colonie de corail dur



Roger Grace

White-tip reef shark, *Triaenodon obesus*  
Requin à aileron blanc de lagon, *Triaenodon obesus*



Roger Grace

Hard corals  
Coraux durs



Roger Grace

Golden banded goatfish, *Mulloidichthys vanicolensis*  
Capucin de vanicolo, *Mulloidichthys vanicolensis*



Roger Grace

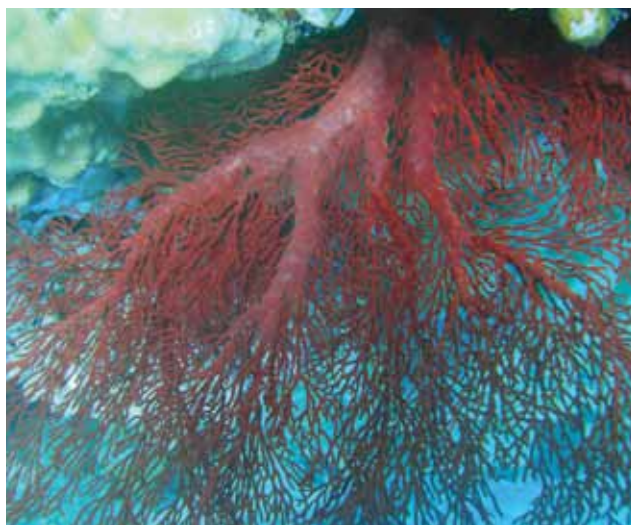
Koumac marina  
Marina de Koumac





Roger Grace

Sea cucumber, *Stichopus hermanni*  
Concombre de mer, *Stichopus hermanni*



Sheila A. McKenna

Red sea fan  
Gorgone rouge



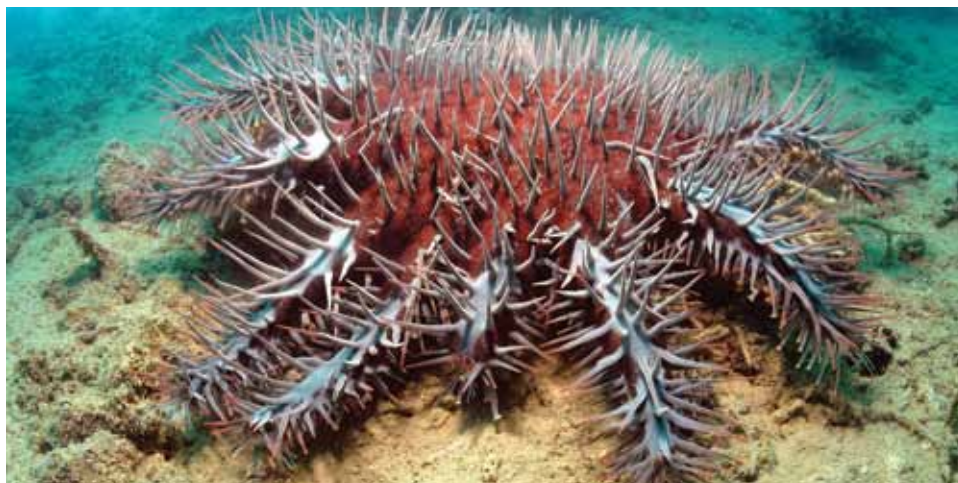
Roger Grace

Chevron barracudas  
Barracudas à bandes noires



Roger Grace

Giant moray, *Gymnothorax javanicus*  
Murène javanaise, *Gymnothorax javanicus*



Roger Grace

Crown-of-thorns starfish  
Coussin de belle-mère





Roger Grace

Oriental flying gurnard, *Dactyloptena orientalis*  
Grondin volant oriental, *Dactyloptena orientalis*



Roger Grace

Scalefin anthias, *Pseudanthias squamipinnis*  
Barbier à queue de lyre, *Pseudanthias squamipinnis*



Roger Grace

Giant clam with hard coral  
Bénitier avec coraux