

First molecular phylogenetic insights into the evolution of free-tailed bats in the subfamily Molossinae (Molossidae, Chiroptera)

Authors: Ammerman, Loren K., Lee, Dana N., and Tipps, T. Marie

Source: Journal of Mammalogy, 93(1) : 12-28

Published By: American Society of Mammalogists

URL: <https://doi.org/10.1644/11-MAMM-A-103.1>

The BioOne Digital Library (<https://bioone.org/>) provides worldwide distribution for more than 580 journals and eBooks from BioOne's community of over 150 nonprofit societies, research institutions, and university presses in the biological, ecological, and environmental sciences. The BioOne Digital Library encompasses the flagship aggregation BioOne Complete (<https://bioone.org/subscribe>), the BioOne Complete Archive (<https://bioone.org/archive>), and the BioOne eBooks program offerings ESA eBook Collection (<https://bioone.org/esa-ebooks>) and CSIRO Publishing BioSelect Collection (<https://bioone.org/csiro-ebooks>).

Your use of this PDF, the BioOne Digital Library, and all posted and associated content indicates your acceptance of BioOne's Terms of Use, available at www.bioone.org/terms-of-use.

Usage of BioOne Digital Library content is strictly limited to personal, educational, and non-commercial use. Commercial inquiries or rights and permissions requests should be directed to the individual publisher as copyright holder.

BioOne is an innovative nonprofit that sees sustainable scholarly publishing as an inherently collaborative enterprise connecting authors, nonprofit publishers, academic institutions, research libraries, and research funders in the common goal of maximizing access to critical research.

First molecular phylogenetic insights into the evolution of free-tailed bats in the subfamily Molossinae (Molossidae, Chiroptera)

LOREN K. AMMERMAN,* DANA N. LEE, AND T. MARIE TIPPS

Department of Biology, Angelo State University, San Angelo, TX 76909, USA (LKA, TMT)

Department of Zoology, Oklahoma State University, Stillwater, OK 74078, USA (DNL)

* Correspondent: loren.ammerman@angelo.edu

Previous understanding of the relationships among genera of bats in the family Molossidae was based largely on phenetic analyses of morphological data. Relationships among the genera of this family have not been tested with molecular data and, thus, the objective of this study was to construct a phylogeny of representative members of free-tailed bats using DNA sequence data from 1 mitochondrial locus (Nicotinamide adenine dinucleotide dehydrogenase subunit 1 [*ND1*]) and 3 nuclear loci (dentin matrix protein 1 exon 6 [*DMP1*], beta fibrinogen intron 7 [*βFIB*], and recombination activating gene 2 [*RAG2*]) for members of the subfamily Molossinae and outgroups from the families Vespertilionidae and Natalidae. Data for each gene were analyzed separately using maximum-likelihood and Bayesian methods and also analyzed in a single combined analysis of a total of 3,216 base pairs. Divergence times were estimated from the combined data set using BEAST analysis. Few intergeneric relationships were significantly supported by mitochondrial data; however, monophyly of most genera was supported. Nuclear results supported a *Chaerephon*–*Mops* clade; a New World clade consisting of *Eumops*, *Molossus*, *Promops*, *Molossops* (including *Neoplatymops*), *Cynomops*, and *Nyctinomops*; and a basal divergence for *Cheiromeles*. Divergence analysis suggested a Paleocene origin for the family and a split between molossids in the Old World and New World around 29 million years ago. Generally, relationships recovered in our analyses reflected biogeographic proximity of species and did not support the hypotheses of relationship proposed by morphological data.

Key words: Chiroptera, divergence, free-tailed bats, molecular systematics, Molossidae, Molossinae, phylogeny

© 2012 American Society of Mammalogists

DOI: 10.1644/11-MAMM-A-103.1

The family Molossidae Gervais, 1856, is the 4th largest family of bats, containing approximately 100 species divided into 16 genera (Simmons 2005); 7 Old World genera (*Mops*, *Chaerephon*, *Platymops*, *Sauromys*, *Cheiromeles*, *Otomops*, and *Myotis*), 7 New World genera (*Promops*, *Molossus*, *Eumops*, *Nyctinomops*, *Molossops*, *Cynomops*, and *Tomopeas*), and 2 genera with members found in both the Old World and New World (*Mormopterus* and *Tadarida*). Currently, 2 subfamilies are recognized (Simmons 1998, 2005)—Molossinae and Tomopeatinae. The subfamily Molossinae contains 15 genera; however, if *Neoplatymops* is treated as a separate genus (elevated from *Molossops*—Peterson 1965; Peterson et al. 1995; Willig and Jones 1985) there are 16 genera. The subfamily Tomopeatinae (Sudman et al. 1994) is monotypic and includes the enigmatic species *Tomopeas rarus*. The number of species in the family continues to grow; new *Mops* (Stanley 2008), *Chaerephon* (Goodman and Cardiff 2004), *Mormopterus* (Goodman et al. 2008; Reardon et al. 2008), *Molossus* (González-Ruiz et al. 2011), and 5 new species of *Eumops* (Baker et al. 2009; Eger

2007; Timm and Genoways 2004) have recently been described resulting in a total of 110 species in the family.

Many species in this family are similar in appearance and only can be externally distinguished by subtle anatomical features such as the extent of ear joining, shape of the antitragus, wrinkles on the lips, and the presence of rump bristles (Freeman 1981). They range in size from as large as 85- to 86-mm forearm in *Eumops dabbenei* and *Cheiromeles torquatus* (Corbet and Hill 1992; Eger 2007) to as small as 25- to 28-mm forearm in *Mops spurrelli* and *Molossops temminckii* (Freeman 1981). Molossid bats are found throughout tropical and subtropical regions of the world and their most obvious feature is a free tail that is not enclosed in a tail membrane like the tail of many other bats. They are distinguished from members of other bat families by numerous



skeletal modifications, many of which are related to the narrow wing morphology (Miller 1907; Peterson et al. 1995).

Species of molossids are notably difficult to capture because of their tendency to fly high above the ground and thus are poorly represented in museum collections compared to other families of bats. For example, surveys in Peru (Hice et al. 2004), Brazil (Bernard and Fenton 2002), West Africa (Fahr and Ebigo 2003), Myanmar (Struebig et al. 2005), and Ecuador (Lee et al. 2010) find that less than 1% of all mist-net captures are molossids even though they are documented from these areas. Furthermore, in a survey of 5 large collections of mammals (Royal Ontario Museum, Texas Tech University Museum, Museum of Vertebrate Zoology, United States National Museum, and the American Museum of Natural History), only 11.7% of the total specimens from the order Chiroptera were from the family Molossidae; whereas 40% were from the family Phyllostomidae and 23% were from the family Vespertilionidae.

Presumably as a result of their rarity in collections, few systematic analyses of the entire family Molossidae have been conducted and none take a molecular approach using modern methods of phylogenetic analysis. Freeman (1981) and Legendre (1984a) analyzed relationships in the family using morphological data before cladistic methods were widely applied to phylogenetic questions. External characteristics and skeletal measurements were analyzed by Freeman (1981) to generate several phenograms that depict the pattern of relationships for many of the genera in this family. Freeman's hypothesis (Fig. 1) described 2 major groups, which were *Mormopterus* (including *Sauromys* and *Platymops*), *Myopterus*, *Cheiromeles*, *Molossops* (including *Neoplatymops* and *Cynomops*); and *Tadarida*, *Chaerephon*, *Mops*, *Otomops*, *Nyctinomops*, *Promops*, *Molossus*, and *Eumops*. In addition, Legendre (1984a) examined dental morphology and divided the family into 3 subfamilies that were not congruent with Freeman's (1981) groups—Molossinae (*Molossus*, *Eumops*, *Molossops*, *Cynomops*, *Neoplatymops*, *Myopterus*, and *Promops*), Tadarinae (*Tadarida* [including *Chaerephon* and *Mops*], *Mormopterus* [including *Platymops*, *Sauromys*, and *Micronomus*], *Nyctinomops*, *Otomops*, and *Rhizomops*), and Cheiromelinae (*Cheiromeles*).

More recently, Gregorin (2000) conducted the 1st cladistic analysis of 112 morphological characters from 76 species of molossids. He recognized 2 subfamilies, Tomopeatinae and Molossinae, but within Molossinae the phylogenetic relationships (Fig. 1) and classification differ substantially from Freeman (1981) and Legendre (1984a). Within Molossinae, he recognized 2 tribes, Molossini (*Molossus*, *Promops*, *Cheiromeles*, and *Myopterus*) and Tadaridini (all other genera). Clearly there is a lack of consensus regarding the classification and evolutionary history of this family.

The evolutionary history of bat families such as Vespertilionidae (Hoofer and Van Den Bussche 2003; Roehrs et al. 2010), Phyllostomidae (Baker et al. 2003), Emballonuridae (Lim et al. 2008), Pteropodidae (Colgan and da Costa 2002), Natalidae (Dávalos 2005), and Mormoopidae (Lewis-Orrit

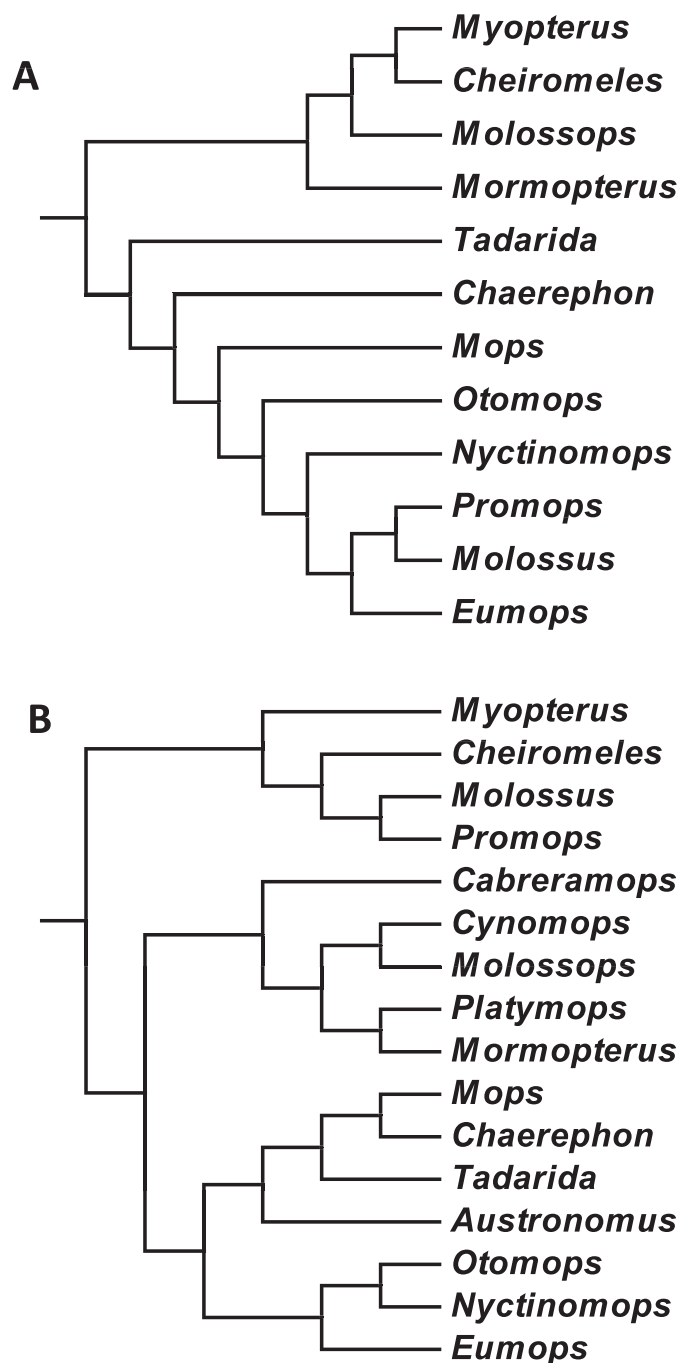


FIG. 1.—Relationships among genera in the subfamily Molossinae. A) Freeman's (1981) cladistic analysis of several discrete morphological states (but see her phenogram on p. 102 based on 76 morphometric characters). B) Gregorin's (2000) cladistic analysis. Gregorin (2000) recognizes *Austronomus*, *Cabreramops*, *Cynomops*, and *Platymops* as full genera instead of subgenera.

et al. 2001) has been elucidated with molecular phylogenetic approaches using multiple genes, but molecular data for relationships within the family Molossidae are sparse. Sudman et al. (1994) used cytochrome-*b* sequences and protein electrophoretic data to demonstrate that the genus *Tomopeas* was a molossid instead of a member of the Vespertilionidae (Miller 1907) but their taxonomic sampling was limited to 6 molossid

genera, all from the New World tropics. Although numerous phylogeographic studies have been conducted in recent years on molossids, especially for African species of *Otomops* (Lamb et al. 2006, 2008), *Chaerephon* (Jacobs et al. 2004; Ratrimomanarivo et al. 2009a; Taylor et al. 2009), *Mormopterus* (Ratrimomanarivo et al. 2009b), and *Mops* (Ratrimomanarivo et al. 2007), the higher-level relationships remain unclear. The objective of our study was to examine relationships among the 16 genera in the subfamily Molossinae using molecular data based on both nuclear and mitochondrial DNA sequences.

MATERIALS AND METHODS

Taxonomic sampling.—In order to address our objective, we obtained tissue samples of specimens from various institutions or individuals representing 15 (94%) of 16 genera in the subfamily Molossinae (Appendix I). No tissues from *Tomopeas rarus* or *Platymops setiger* were available. To our knowledge, we have samples representing the largest collection of molossids and we were able to sample the type species for all but 4 genera. The following type species were included: *Cheiromeles torquatus* Horsfield, 1824, *Cynomops abrasus* (Temminck, 1827), *Eumops perotis* (Schinz, 1821), *Molossops temminckii* (Burmeister, 1854), *Molossus molossus* (Pallas, 1766), *Mops mops* (de Blainville, 1840), *Mormopterus jugularis* (Peters, 1865), *Myopterus daubentonii* Desmarest, 1820, *Neoplatymops mattogrossensis* (Vieira, 1942), *Nyctinomops femorosaccus* (Merriam, 1889), *Sauromys petrophilus* (Roberts, 1917), and *Tadarida teniotis* (Rafinesque, 1814). Additionally, we included samples from Vespertilionidae (*Myotis chinensis*, *M. velifer*, *M. yumanensis*, and *Antrozous pallidus*) and Natalidae (*Natalus stramineus* and *Chilonatalus [Natalus] micropus*) as outgroups based on their familial relationship to Molossidae (Miller-Butterworth et al. 2007; Teeling et al. 2002, 2005).

Generation of sequence data.—We isolated whole genomic DNA from either wing punches; frozen liver or muscle tissue; or liver tissue stored in ethanol, dimethylsulfoxide, or lysis buffer (Longmire et al. 1997). All DNA was isolated using the DNeasy Tissue Kit (QIAGEN Inc., Valencia, California) following manufacturer's protocol, and samples stored in ethanol or dimethylsulfoxide were soaked in phosphate-buffered saline prior to extraction.

We used polymerase chain reaction to amplify 1 mitochondrial locus, nicotinamide adenine dinucleotide dehydrogenase subunit 1 (*ND1*), and 3 nuclear loci, beta fibrinogen intron 7 (*βFIB*), recombination activating gene 2 (*RAG2*), and dentin matrix protein 1 exon 6 (*DMP1*) using the following primers. For *ND1*, we used ER65 5'-CCTCGATGTTGGATCAGG-3' and ER66 5'-GTATGGGCCCCGATAGCTT-3' (Petit et al. 1999). We used BFibI7L 5'-TCCCCAGTAGTATCTGCCAT-TAGGGTT-3' and BFibI7U 5'-GGAGAAAACAGGACAAT-GACAATTCAC-3' (Prychitko and Moore 1997) to amplify *βFIB*, and RAG2-179F 5'-CAGTTTTCTCTAAGGAYTCC-TGC-3' and RAG2-1458R 5'-TTGCTATCTTCACATGCTC-

ATTGC-3' (Stadelmann et al. 2007) to amplify *RAG2*. Lastly, we designed Den4F 5'-AGACAAGGAGGAAACTCCA-GACT-3' specifically for molossids and used Den10R 5'-GTTGCTCTCTGTGATTTGCTGC-3' (Van Den Bussche et al. 2003) to amplify *DMP1*. Polymerase chain reactions consisted of 200–500 ng of DNA, 3 U of *Taq* polymerase, 0.16 μM of forward and reverse primer, 2 mM MgCl₂, 0.16 mM deoxynucleoside triphosphates, and 1X reaction buffer for a total volume of 12.5 μl. The same thermal profile was used for each fragment with varying annealing temperatures: initial denaturation of 92°C for 2 min, followed by 39 cycles of 94°C for 1 min, annealing for 1 min (*ND1* 48°C, *βFIB* 48°C, *RAG2* 61–63°C, and *DMP1* 55–57°C), and 72°C for 1 min, with a final extension of 72°C for 10–30 min.

The *βFIB* polymerase chain reaction fragments were sequenced early in this project via cloning. Polymerase chain reaction products were separated on 1% low-melt agarose gels and ligated directly into a 2.1 TopoTA vector following manufacturer's protocols except using only one-fourth of the reagent volumes (Invitrogen, Carlsbad, California). We purified plasmids containing polymerase chain reaction products following the protocol of the QIAprep Spin Miniprep Kit (QIAGEN Inc.). Cycle sequencing of both strands was performed with dye-labeled M13 primers using ThermoSequenase (USB, Cleveland, Ohio) following the manufacturer's protocol. Two clones from each sample were sequenced and collected on a LICOR NEN Global IR2 sequencing system (LI-COR, Inc., Lincoln, Nebraska) using ESeq version 3 software.

Polymerase chain reaction fragments of *ND1*, *RAG2*, and *DMP1* were visualized with electrophoresis and were cleaned using Exosap-IT (USB) before being sequenced on a Beckman Coulter CEQ 8000 genetic analyzer using the GenomeLab-DTCS Quick Start Kit (Beckman Coulter Inc., Fullerton, California). We followed the manufacturer's protocol but used one-fourth volume reactions. All DNA sequences obtained have been deposited in GenBank (Appendix I).

Sequence alignment and single-gene analyses.—Sequencher version 4.7 and version 4.8 (Gene Codes Corporation, Ann Arbor, Michigan) were used to align overlapping fragments, and ambiguities were refined by eye. Alignment parameters used for the fibrinogen intron were adjusted to allow large gaps and minimized the number of single-base insertions-deletions (indels). Coding regions were translated when applicable. We also downloaded sequences from GenBank (*Tadarida insignis* AB079813 for *ND1*, *Mormopterus acetabulosus* EU487473 and *Myotis chinensis* AY726646 for *βFIB*, *N. stramineus* AY141024 for *RAG2*, and *C. micropus* AY141883 and *N. stramineus* AY141884 for *DMP1*) to increase our sampling. The final alignment from each data set was imported in PAUP*, version 4.0b10 (Swofford 2003) for parsimony analysis. Each data set was analyzed separately in Modeltest version 3.7 (Posada and Crandall 1998) to determine the appropriate model of evolution for likelihood analyses. We also used MrBayes version 3.1.2 (Ronquist and Huelsenbeck 2003) with 2 simultaneous runs of 1–2 million

generations and the GTR+G model was used for each gene. Convergence was measured by values of the average standard deviation of split frequencies (average standard deviation of split frequencies less than 0.01 was considered convergence of the 2 simultaneous runs). Trees were sampled every 100 generations. We used a burn-in to discard 25% of saved trees. Bootstrap analysis (100 pseudoreplicates) using maximum-likelihood (ML) criteria was used as an additional measure of branch significance (Felsenstein 1985; Posada and Crandall 1998; Swofford 2003). We considered significantly supported nodes as those with both ML bootstrap (BS) values >70 (Hillis and Bull 1993; Suzuki et al. 2002) and Bayesian posterior probabilities (BPPs) >0.95. Finally, average genetic distances were calculated in PAUP* using uncorrected p for the mitochondrial data set and the appropriate model of evolution for each nuclear data set. Additionally, we plotted uncorrected p distance versus ML distance to look for saturation in *ND1*. Results from the saturation curve prompted us to also analyze *ND1* sequence partitioned by codon position using Bayesian methods and to analyze the translated amino acid sequence using parsimony in MEGA version 4 (Tamura et al. 2007).

Analysis of combined data set.—Data from all 4 genes were combined for a single analysis to provide a better estimate of the relationships among genera (Gadagkar et al. 2005). To compensate for different taxonomic sampling in some genes, we created composite sequences from 2 individuals of the same species when possible. We retained taxa in the alignment if represented by 2 or more gene sequences except for *Myopterus daubentonii* and *Eumops perotis* (both with only a single gene sequence), which were retained because they were type species for these genera. This approach was used because missing data have been shown to be less important than missing taxa in a phylogenetic analysis (de la Torre-Bárcena et al. 2009; Wiens 2003).

Incongruence length-differences tests (Farris et al. 1995) were conducted to determine congruence between the different genes (Cunningham 1997) using the partition homogeneity test in PAUP* 4.0b10 (Swofford 2003). Because there was no significant incongruence among data sets ($P = 0.93$), we created and analyzed a combined, multilocus alignment. As a 2nd justification for combining all genes, we evaluated congruence by noticing the lack of any significantly supported nodes in 1 data set that conflicted with strongly supported nodes in another (de Queiroz 1993). The combined data set was analyzed using a partitioned Bayesian analysis (MrBayes version 3.1.2—Ronquist and Huelsenbeck 2003) with 2 simultaneous runs of 2 million generations and a burn-in equal to 25% of saved trees. The data were partitioned by gene and the GTR+G model was used for each (estimates of rate variation were unlinked). In addition, we ran a parsimony analysis on the combined data set with gaps as a 5th state. Nodal support for this analysis was assessed with parsimony bootstrapping (1,000 pseudoreplicates—Felsenstein 1985).

Estimating divergence time.—We used the combined data set to estimate divergence times. Prior to estimating

divergence times, we performed a likelihood ratio test (Felsenstein 1981) using the combined data set to test the hypothesis of a strict global clock. We then used the ML tree from PAUP* in r8s version 1.7 (Sanderson 2003) to rescale the branch lengths on the phylogram to years instead of substitutions per site. The oldest fossil molossid, *Wallia*, was used to calibrate the analysis with a minimum of 42 million years ago (mya) as the deepest divergence date for all molossids (Czaplewski et al. 2003). This tree served as the starting tree for analysis in BEAST version 1.5 (Drummond and Rambaut 2007). We performed initial analyses to optimize parameters. Nodal dates were examined using a Yule species prior and a lognormal distribution, and we attempted the analysis using GTR+I+G and HKY+I+G models of sequence evolution. Based on preliminary results, our final analysis consisted of 3 separate runs of 20 million generations with 10% burn-in using only the HKY+I+G model. Results from the final 3 runs were combined in Tracer version 1.5 (Rambaut and Drummond 2007) to check for effective sample sizes (Drummond et al. 2002) greater than 200 for all parameters and stable convergence on a unimodal posterior. Time estimates were calculated based on the combination of log and tree files from BEAST in TreeAnnotator version 1.5.4 (Drummond and Rambaut 2007).

RESULTS

Overall, we obtained sequences from 60 individuals representing 35% (38 of 110) of the species in the subfamily Molossinae (sensu Simmons 2005; Appendix I). Although amplification of all genes was attempted for all samples by adjusting concentrations of polymerase chain reaction reagents and altering thermal profiles, some genes did not amplify for some taxa. Therefore, the resulting analyses were not identical with regard to their taxon sampling. In total, the 4 genes comprised 3,216 aligned nucleotides. The concatenated alignment included 30 ingroup and 4 outgroup taxa and 15 taxa were represented by composite sequences from 2 different individuals of the same species.

Nicotinamide adenine dinucleotide dehydrogenase subunit I.—We analyzed 888 base pairs (bp) of the *ND1* gene from 33 molossid taxa representing 15 genera (Table 1). Divergences (uncorrected p) among molossid genera ranged from 9.6% between *Chaerephon* and *Mops* to 27% between *Cheiromeles* and *Sauromys*. Even though there were many variable sites, only 56 were parsimony informative (Table 1). An ML tree was obtained ($-\ln = 8,916.7756$) using the GTR+I+G model of evolution with the following parameters: base frequencies = 0.3727, 0.2927, 0.0904; 6 substitution types and the rate matrix = 6.8800, 36.1327, 4.8845, 0.7107, 97.4996; gamma shape parameter = 1.1593, proportion of invariant sites = 0.5043. After 2 million generations in the Bayesian analysis, the average standard deviation of split frequencies was 0.008416. Topology of the ML tree was not identical to that of the Bayesian tree (Fig. 2), but there was not significant conflict. The Bayesian tree grouped *Cheiromeles*, *Mormopterus*, and

TABLE 1.—Descriptive information about each data set. *ND1* = Nicotinamide adenine dinucleotide dehydrogenase subunit 1; *βFIB* = beta fibrinogen intron 7; *DMP1* = dentin matrix protein 1 exon 6; *RAG2* = recombination activating gene 2; ML = maximum likelihood.

	<i>ND1</i>	<i>βFIB</i>	<i>DMP1</i>	<i>RAG2</i>
No. molossid genera	15	10	13	12
No. total species	34	22	24	26
Total characters	888	792	496	1040
Variable characters	407 (45.8%)	285 (36.0%)	142 (28.6%)	221 (21.3%)
Parsimony informative	56 (6.3%)	126 (15.9%)	75 (15.1%)	107 (10.3%)
Consistency index	0.3067	0.7196	0.8112	0.7891
Retention index	0.4888	0.8235	0.8131	0.7565
Parsimony tree length	2005	382	196	313
Equally parsimonious trees	2	13	1	1
Model of evolution for ML	GTR+I+G	TVM+G	TrN+G	TIM+G

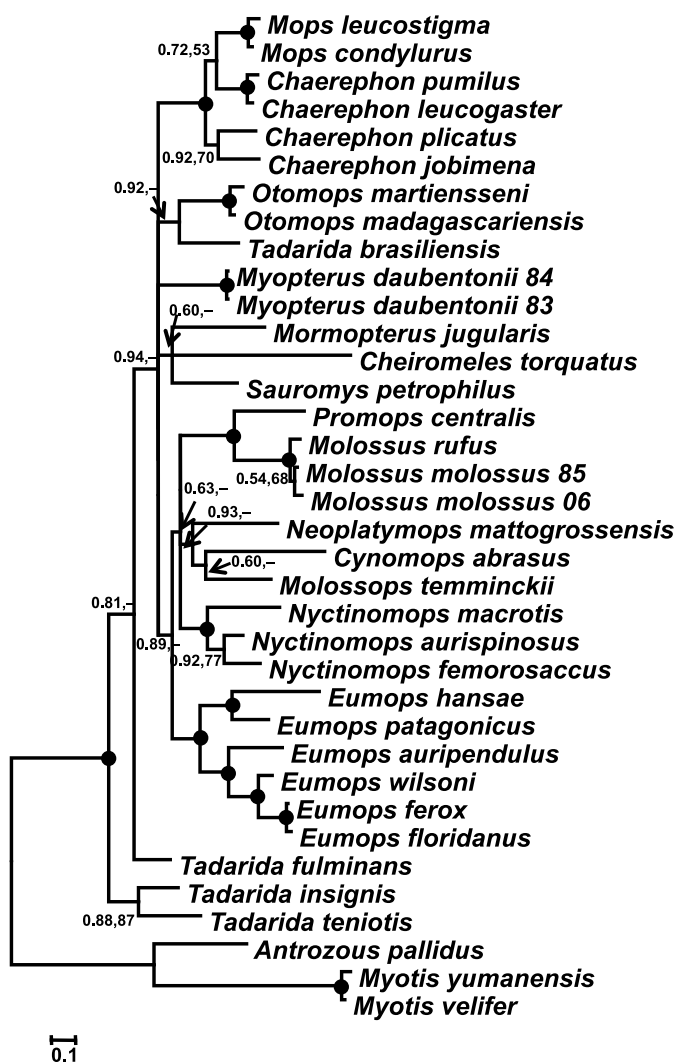


FIG. 2.—Phylogram based on Bayesian analysis of 888 base pairs of Nicotinamide adenine dinucleotide dehydrogenase 1 partitioned by codon position. Support values on branches are Bayesian posterior probabilities (BPPs) followed by maximum-likelihood (ML) bootstrap (BS) values. Solid black dots indicate nodes with BPP ≥ 0.95 and ML (GTR+I+G) BS support ≥ 70. Dashes indicate values less than 50.

Sauromys (but with poor BPP support values), whereas the ML tree placed each of these taxa on different branches with all BS values < 50%.

Overall, the *ND1* data significantly supported more recent divergences such as the monophyly of genera (*Mops*, *Otomops*, *Eumops*, *Nyctinomops*, and *Molossus*). The only intergeneric relationships supported were a *Chaerephon*–*Mops* clade and a *Molossus*–*Promops* clade. *Chaerephon* species and *Tadarida* species did not form monophyletic clades although these results were not significantly supported. A clade containing 7 New World genera (*Cynomops*, *Molossops*, *Neoplatymops*, *Molossus*, *Promops*, *Nyctinomops*, and *Eumops*) also was recovered by the *ND1* analysis (Fig. 2).

Because saturation was present in *ND1* (Fig. 3), amino acid sequences were analyzed using parsimony methods. A total of 75 of 296 amino acid positions were variable and 55 were parsimony informative. We recovered 206 shortest trees (consistency index [CI] = 0.6667, retention index [RI] = 0.7723) and calculated a majority rule consensus tree (not shown). Only 2 nodes had significant support based on bootstrap percentages—1 for the family Molossidae and the other joining the 2 *Otomops* species together.

Beta fibrinogen intron 7.—We analyzed 792 bp of *βFIB* from 20 molossid taxa representing 10 genera (Table 1). Divergences (TVM+G) among molossid genera ranged from 2.08% between *Sauromys* and *Tadarida* to 9.20% between *Nyctinomops* and *Mops*. The highest divergence of 18% was seen in 2 pairwise comparisons (between *Nyctinomops* and *Mops* and the outgroup *Myotis*).

Numerous small indels were present as well as 1 large one. Unique indels were a 4-bp insertion in *Mormopterus acetabulosus*, a 4-bp insertion in *Promops centralis*, a deletion of 56 bp in *Tadarida brasiliensis*, and a 9-bp deletion in *Eumops patagonicus*. Shared indels were a 3-bp deletion in both *Myotis* species; a 3-bp insertion in *Tadarida*, *Sauromys*, *Otomops*, *Mormopterus*, and *Myotis*; a 19-bp deletion shared by 2 *Nyctinomops* species; and a 5-bp deletion shared by *Eumops*, *Promops*, and *Molossus*.

This gene had the highest percentage of parsimony-informative sites of the nuclear markers (Table 1). These values were calculated without considering indels as characters. An ML tree was obtained (–ln = 3,185.94933) using the TVM+G model of evolution with the following parameters:

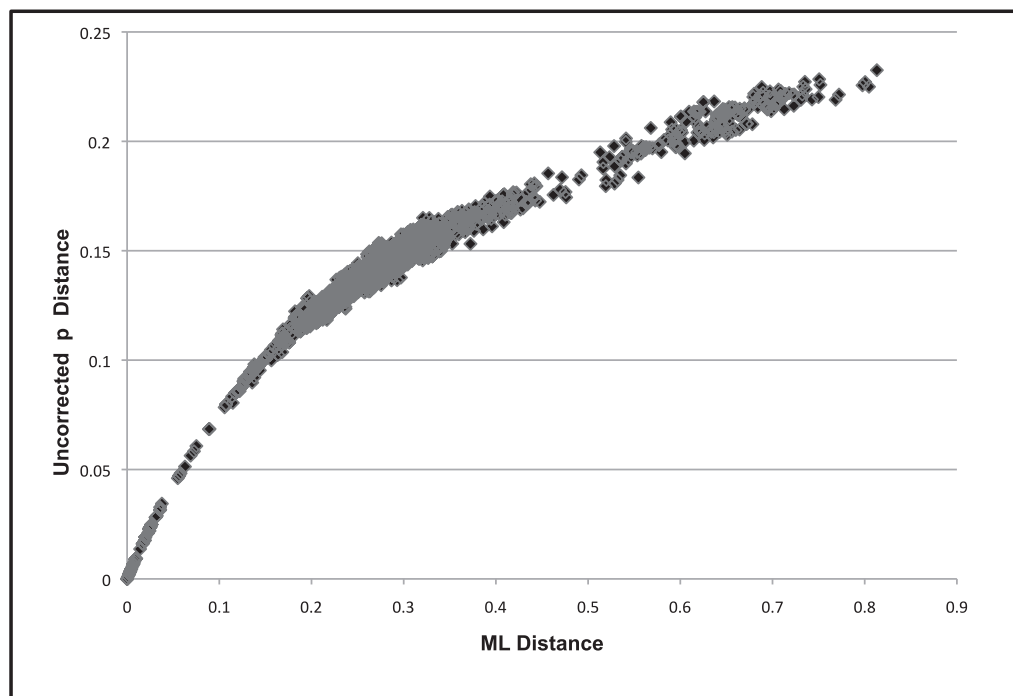


FIG. 3.—Uncorrected p distances plotted against maximum-likelihood distances for the Nicotinamide adenine dinucleotide dehydrogenase subunit 1 gene.

base frequencies = 0.3117, 0.2142, 0.1880; 6 substitution types and the rate matrix = 0.6600, 2.5844, 0.2737, 0.6923, 2.5844; gamma shape parameter = 1.3519. For the Bayesian analysis, after 1 million generations in 2 simultaneous runs, the average standard deviation of split frequencies was 0.006761. Topology of the ML tree differed slightly from that of the Bayesian tree (Fig. 4) in 2 places but neither was significantly supported. The *Sauromys*–*Tadarida* clade was united with the New World clade and *Otomops* clustered with the *Mops*–*Chaerephon* clade.

The analysis of β FIB sequences significantly supported a *Chaerephon*–*Mops* clade resulting in nonmonophyly of either genus (Fig. 4). A New World clade containing *Eumops*, *Nyctinomops*, *Promops*, and *Molossus* had significant support and within it *Promops*–*Molossus* were sister taxa. A clade containing *Tadarida* and *Sauromys* had significant support; *Sauromys* was sister to *Tadarida aegyptiaca*, and this clade formed a sister to *T. brasiliensis*. There was not strong support for the monophyly of Molossinae in this analysis (Fig. 4).

Dentin matrix protein 1 exon 6.—We analyzed 496 bp from *DMP1* for 20 molossid taxa representing 13 genera (Table 1). Divergence (TrN+G) among molossid genera ranged from 1.98% between *Chaerephon* and *Mops* to 6.22% between *Chaerephon* and *Neoplatymops*. *DMP1* had the lowest number of parsimony-informative sites for the nuclear genes (Table 1).

An ML tree was obtained ($-\ln = 1,842.8861$) using the TrN+G model of evolution with the following parameters: base frequencies = 0.3477, 0.2244, 0.2666; 6 substitution types and the rate matrix = 1.0000, 2.4714, 1.0000, 1.0000, 6.7544; gamma shape parameter = 0.6615. After 1 million generations in 2 simultaneous Bayesian runs, the average

standard deviation of split frequencies was 0.007991. Topology of the ML tree was similar to that of the Bayesian tree (Fig. 5), except that *Tadarida fulminans* formed a separate branch between *Mormopterus* and all other molossines, and *Neoplatymops* clustered with *Cynomops* and *Molossops* in the ML tree.

Analysis of *DMP1* significantly supported a *Chaerephon*–*Mops* clade, but did not support monophyly of *Chaerephon*. A New World clade (*Cynomops*, *Molossops*, *Neoplatymops*, *Eumops*, *Nyctinomops*, *Molossus*, and *Promops*) also was recovered with significant support. Within the New World clade, monophyly of the genera *Eumops* and *Nyctinomops* was supported. The position of *Mormopterus* as the most basal lineage was significantly supported. No significant resolution among *Tadarida*, *Otomops*, and *Sauromys* was recovered, but *Sauromys* formed a sister relationship with *T. brasiliensis* (Fig. 5).

Recombination activating gene 2.—We analyzed 1,040 bp from *RAG2* for 22 molossid taxa, representing 12 genera (Table 1). *Cheiromeles* had a deletion of 3 codons that was not present in the other taxa. Divergence (TIM+G) among molossid genera was lower than for the other nuclear genes and ranged from 1.2% between *Tadarida* and *Sauromys* to 4.97% between *Cheiromeles* and *Mops*. In *RAG2*, approximately 10% of the sites were parsimony informative (Table 1).

An ML tree was obtained ($-\ln = 3,382.17706$) using the TIM+G model of evolution with the following parameters: base frequencies = 0.2971, 0.2030, 0.2219; 6 substitution types and the rate matrix = 1.0000, 3.9057, 0.6423, 0.6423, 6.2332; gamma shape parameter = 0.3134. In the Bayesian

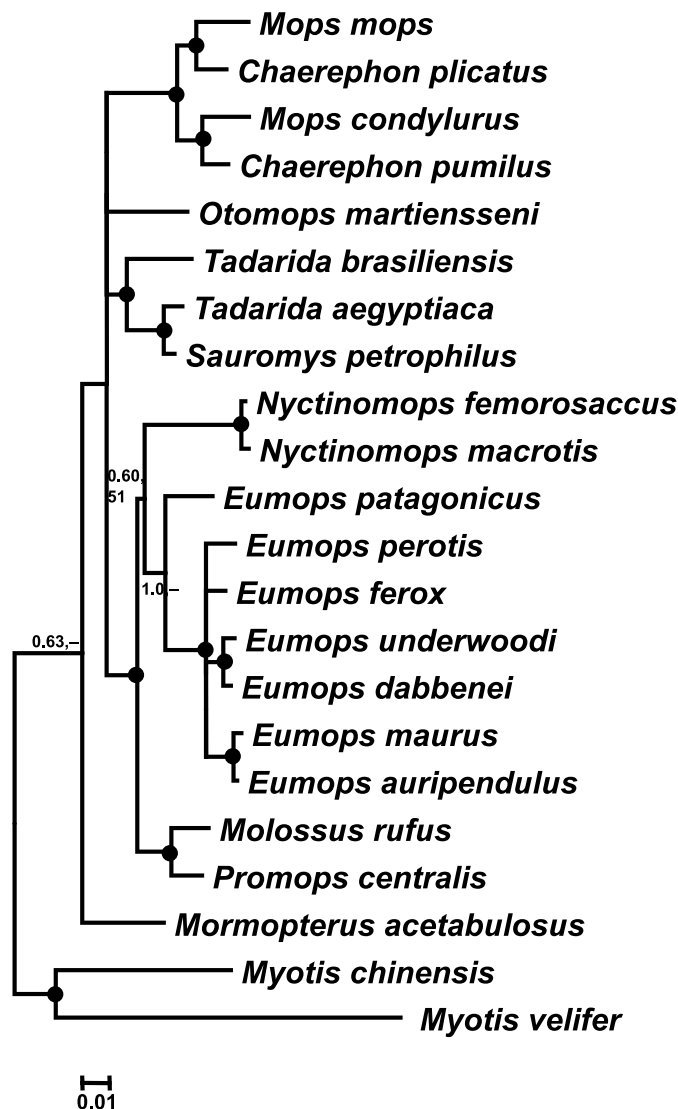


FIG. 4.—Phylogram based on Bayesian analysis of 792 base pairs of beta fibrinogen intron 7. Support values on branches are Bayesian posterior probabilities (BPPs) followed by maximum-likelihood (ML) bootstrap (BS) values. Solid black dots indicate nodes with BPP ≥ 0.95 and ML (TVM+G) BS support ≥ 70 . Dashes indicate values less than 50.

analysis, after 1 million generations in 2 simultaneous runs, the average standard deviation of split frequencies was 0.004860. Topology of the ML tree was similar to that of the Bayesian tree (Fig. 6) except that *Otomops* joined a clade of *Sauromys* and *Tadarida* but by a short, unsupported branch.

Significant results from the Bayesian analysis included a *Chaerephon*–*Mops* clade, but monophyly of *Chaerephon* was not supported based on RAG2 data. A New World clade (*Cynomops*, *Nyctinomops*, *Eumops*, *Molossus*, *Promops*, and *Neoplatymops*) had significant support; however, the only well-supported intergeneric relationship recovered was a *Promops*–*Molossus* clade. *Cheiromeles* was the most basal member of the family with significant support. A clade containing 4 species of *Tadarida* and *Sauromys petrophilus* was recovered although support was low (Fig. 6).

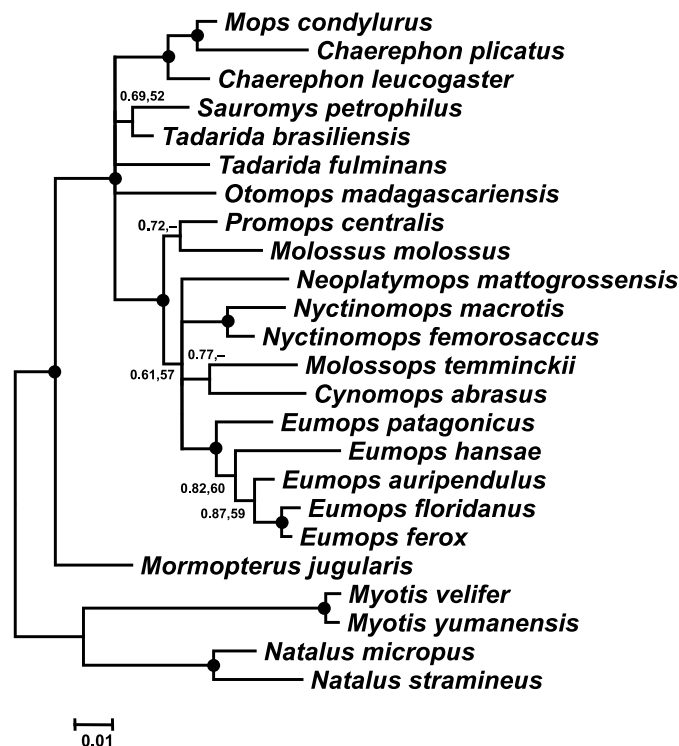


FIG. 5.—Phylogram based on Bayesian analysis of 496 base pairs of dentin matrix protein 1. Support values on branches are Bayesian posterior probabilities (BPPs) followed by maximum-likelihood (ML) bootstrap (BS) values. Solid black dots indicate nodes with BPP ≥ 0.95 and ML (TrN+G) BS support ≥ 70 . Dashes indicate values less than 50.

Analysis of combined data set.—Parsimony analysis of the combined data set when gaps were coded as missing resulted in 5 equally parsimonious trees of 2,700 steps. There were 616 parsimony-informative characters used. A majority rule consensus resulted in poor resolution (tree not shown). A 2nd analysis using gaps as a 5th character state resulted in 1 most parsimonious tree with 3,080 steps (CI = 0.4747, homoplasy index [HI] = 0.5253, RI = 0.5098). There were 673 parsimony-informative sites. Significant bootstrap values are mapped on the Bayesian tree (Fig. 7) except for 2 patterns that conflicted with the Bayesian tree. Parsimony analysis supported *Nyctinomops femorosaccus* and *N. macrotis* as sister taxa (BS = 93) without *N. aurispinosus*. Parsimony analysis also supported a clade containing all *Eumops* except for *E. hansae* (BS = 91). Partitioned Bayesian analysis of the same concatenated data set produced a similar topology to the parsimony bootstrap consensus tree, but with additional resolution (Fig. 7). After 2 million generations in 2 simultaneous runs, the average standard deviation of split frequencies was 0.006035. The combined Bayesian analysis of all 4 genes suggested some relationships not seen in the individual gene trees, although with poor support values. For example, a clade containing all *Tadarida* (plus *Sauromys*), a clade of all Old World taxa, and the clustering of *Myopterus* with *Chaerephon* and *Mops* were suggested by the Bayesian analysis with low support (Fig. 7). All other significantly supported relationships

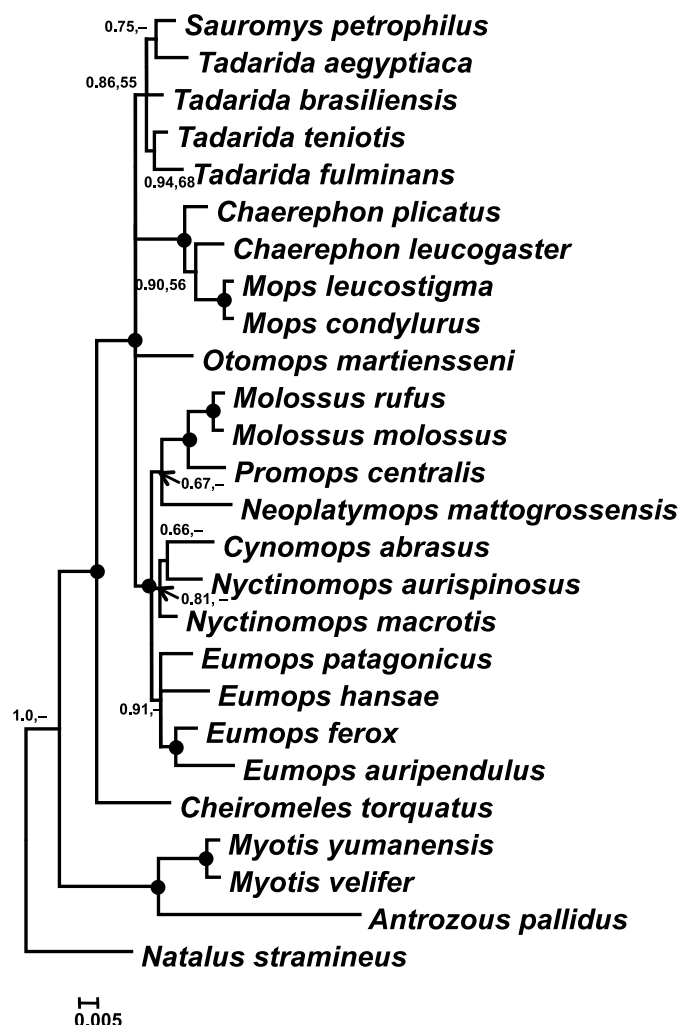


FIG. 6.—Phylogram based on Bayesian analysis of 1,040 base pairs of recombination activating gene 2. Support values on branches are Bayesian posterior probabilities (BPPs) followed by maximum-likelihood (ML) bootstrap (BS) values. Solid black dots indicate nodes with BPP ≥ 0.95 and ML (TIM+G) BS support ≥ 70 . Dashes indicate values less than 50.

also were seen in at least 1 of the individual gene analyses, such as support for the subfamily Molossinae, the basal position of *Cheiromeles*, and a New World clade.

Divergence time.—A strict molecular clock was rejected ($2\Delta L = 108.0556$; $p = 0.00$) and a relaxed molecular clock was used to estimate divergence times. The divergence of molossids from outgroup taxa was estimated to be 63 (51.5–75.3) mya. The position of outgroups in this analysis was reversed compared to the Bayesian analysis with vespertilionids as the sister to Natalidae + Molossidae. Additionally, the order of divergence within the Old World clade differed from the Bayesian analysis slightly, but was not significantly supported (Figs. 7 and 8). A split between an Old World clade and a New World clade was dated at 28.7 (24.4–33.2) mya, with a series of rapid divergence events soon after this within each clade. *Cheiromeles* and *Mormopterus* diverged before this event and were dated at 43.5 (42.0–46.5) and 33.3 (27.8–39.1) mya,

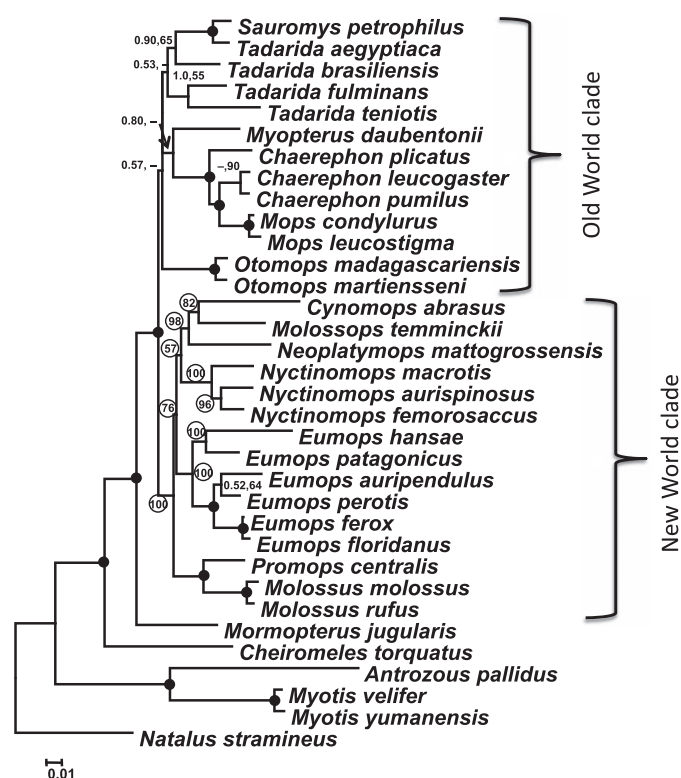


FIG. 7.—Phylogram based on partitioned Bayesian analysis of 4 loci in a combined data set. Support values on branches are Bayesian posterior probabilities (BPPs) followed by bootstrap (BS) values. Solid black dots indicate nodes with BPP ≥ 0.95 and BS support ≥ 70 . Dashes indicate values less than 50. Circled BPP values are on nodes that were not present in the parsimony tree because of an unresolved position for *Nyctinomops aurispinosus*, *Eumops hansae*, and *Cynomops abrasus* that failed to unite them with other New World taxa.

respectively. Error bars were much longer for the earliest divergences and shorter within Molossinae (Fig. 8).

DISCUSSION

The evolutionary history of the molossid subfamily Molossinae recovered in our study based on DNA sequences is not consistent with existing morphological predictions (Freeman 1981; Gregorin 2000; Legendre 1984a). We did not recover groups that match Legendre's (1984a) proposed subfamilies or Gregorin's (2000) 2 tribes (Molossini and Tadaridini), nor did any of the molecular hypotheses from any gene mirror the 2 groups described by Freeman (1981). For instance, *Cheiromeles* formed the sister lineage to the remaining members of Molossinae and did not cluster with any of the taxa (*Mormopterus*, *Molossops*, *Molossus*, and *Promops*) as hypothesized based on cladistic analysis of morphology (Freeman 1981; Gregorin 2000; Fig. 1). However, our molecular phylogeny did appear to share some relationships recovered in Freeman's (1981:102) phenogram. Furthermore, the recovery of a New World clade in this study was incongruent with traditional taxonomic schemes; neither

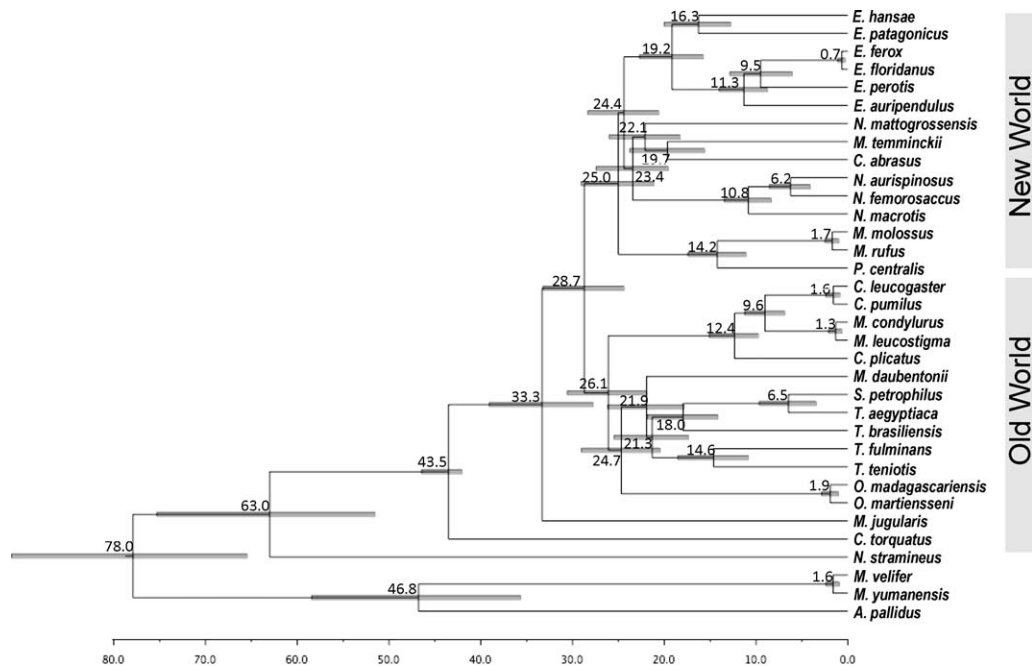


FIG. 8.—Chronogram of the phylogeny of Molossinae generated from BEAST analysis of the combined data set using the relaxed uncorrelated lognormal molecular clock. Mean divergence estimates indicated at corresponding nodes with ages in millions of years before present. Gray bars represent the 95% highest posterior density interval for each node.

morphological arrangement predicted this grouping. Legendre's (1984a) subfamily Molossinae is similar to our New World clade, but he did not include *Nyctinomops* and did include *Myopterus* from the Old World in this subfamily.

As has been observed in other studies, geography seemed to better indicate phylogenetic relationship (such as the New World clade and Old World clade in Fig. 7) than did morphological traits (Hoofer and Van Den Bussche 2003; Ruedi and Mayer 2001). Disagreements with morphological hypotheses could be due to convergence in morphological characteristics that traditionally have been used to classify molossids. For example, Freeman (1981) cautioned that characters such as palatal emargination, separation of the ears, basisphenoid pits, and lip wrinkles might have more to do with functional morphology of eating beetles and might not be ideal for recovering phylogenetic patterns. Furthermore, the morphology associated with flat-headedness (Freeman 1981; Peterson 1965) appears to have evolved multiple times in crevice-dwelling molossids. The genera *Sauromys*, *Platymops*, *Mormopterus*, and *Neoplatymops* have a high coronoid process and a mandibular condyle elevated above the toothrow. These characteristics could have evolved to compensate for the leverage required when the temporal muscle was forced to extend laterally with the flattening of the skull (Freeman 1981) and might not be useful synapomorphies. As the phylogeny of this group is refined, a better understanding of character evolution should emerge.

In summary, although there was slightly different taxonomic sampling for each gene, information from 4 different loci corroborated several hypotheses of intergeneric relationship. *ND1* data resolved some recent divergences, but did not provide much resolution for the deeper divergences due to

saturation. Nevertheless, the topology based on *ND1* analysis was not in conflict with nuclear hypotheses of relationship. Our analyses significantly support a *Mops*–*Chaerephon* clade, a New World molossid clade, and a close relationship between *Sauromys* and *Tadarida*. Additionally, analysis of the combined data set suggests an Old World clade exists.

Mops–*Chaerephon* clade.—Data from all 4 genes agreed that there was significant support for a *Mops*–*Chaerephon* clade resulting in paraphyly of *Chaerephon* in all cases. This pattern was also recovered by Gregorin (2000) and by Freeman's (1981:102) quantitative analysis, and was seen in a supertree analysis of Jones et al. (2005). In addition, *Chaerephon* + *Mops* was 1 of the few statistically significant nodes recovered by analysis of cytochrome-*b* sequence (Agnarsson et al. 2011) even though neither genus was monophyletic in that analysis. No consistent picture emerges as to the relationships among these Old World species, but *Mops condylurus* from Africa clusters with *Mops leucostigma* from Madagascar when present, and these 2 form a close relationship with African *Chaerephon* and not other *Mops*. These results are in agreement with Rosevear (1965), who proposed that *M. condylurus* should be recognized as *Chaerephon* based on morphology, and with Peterson et al. (1995), who noted the intermediate morphology of *M. condylurus* and *M. leucostigma*.

In addition, the β FIB analysis clustered species of *Mops* and *Chaerephon* that are geographically closely distributed; *M. mops* and *C. plicatus* from the Asian region clustered together and *M. condylurus* and *C. pumilus* from the African region clustered together. Certainly wider taxonomic sampling of the species in this clade would be valuable for determining the validity of these generic designations. Both genera, *Chaerephon* and *Mops*, were elevated from *Tadarida* by Freeman (1981),

Koopman (1984), and Simmons (2005), but not by Corbet and Hill (1986), Peterson et al. (1995), or Legendre (1984a). However, our results confirm that *Chaerephon* is distinct from *Tadarida*.

New World molossid clade.—Significant support for 7 genera in a New World clade was recovered by 3 nuclear genes and suggested by the mitochondrial gene tree (BPP = 0.89) including *Eumops*, *Molossus*, *Promops*, *Molossops*, *Cynomops*, *Nyctinomops*, and *Neoplattymops*. This arrangement conflicts with Freeman (1981; Fig. 1) because of the inclusion of *Molossops* (and *Neoplattymops*) in the New World clade. She placed these genera with *Myotis*, *Cheiromeles*, and *Mormopterus*. It also conflicts with Gregorin (2000; Fig. 1) because New World genera were represented in each of his 3 proposed tribes or subtribes and there was no clade similar to the New World clade that we recovered in our study. As expected based on previous work (Freeman 1981), the New World clade did not include *T. brasiliensis*—the only New World member of this genus. *Tadarida* last shared a common ancestor with the New World clade almost 29 mya (Fig. 8).

A sister relationship recovered between *Molossops* and *Cynomops* was congruent with Peters et al. (2002). *Neoplattymops* (considered a subgenus of *Molossops* by Freeman [1981], Gregorin [2000], Legendre [1984a], and Simmons [2005]) did not form a monophyletic clade with *Molossops* in our analysis, supporting its generic status (Willig and Jones 1985). We note that another species elevated from *Molossops*, *Cabreramops aequatorianus* (Ibáñez, 1981), has been recognized by Eger (2007), but it was not included in our study.

There is strong support for monophyly of *Eumops* and *Nyctinomops* except by RAG2 data. Comparison to the quantitative analysis of Freeman (1981:102) reveals substantial convergence in the morphology of *Eumops* species as evinced by the nonmonophyly of the genus. For example, *E. perotis* clustered with *Otomops* and large *Tadarida* based on similar morphotypes that are influenced by loud, low-frequency echolocation, adaptation to dry environments, and similar diets and foraging behavior (Jones and Rydell 2003; Rydell and Yalden 1997). The inclusion of *Cynomops* within *Nyctinomops* by RAG2 is unexpected and probably the result of the lack of variable characters in this fairly conserved exon. Other significantly supported nodes within the New World clade were the *Molossus*–*Promops* clade. Freeman (1981), Gregorin (2000), and Sudman et al. (1994) also found they were sister taxa. The divergence between these 2 genera (*Molossus* and *Promops*) appears to be one of the most recent in the family (14.2 mya) and is even more recent than the oldest divergence within the genus *Eumops* (19.2 mya). A 5 bp deletion in the β FIB intron was shared by *Eumops*, *Promops*, and *Molossus*, suggesting a close relationship, but there was not significant branch support.

Tadarida and Sauromys.—Our analyses support Freeman's (1981) and Gregorin's (2000) hypothesis that the closest relative to the common Mexican free-tailed bat (*T. brasiliensis*) is not other North American free-tailed bats, but instead is *T. aegyptiaca* from Africa. In addition, the close relationship

between *Tadarida* and *Sauromys* seen in 3 of our analyses (β FIB, DMP1, and RAG2) has been suggested by other authors (Freeman 1981; Harrison 1962; Peterson 1965). Peterson et al. (1995) stated that *Sauromys* was more closely related to *Mormopterus* than to any other genus. Similarly, Gregorin's (2000) morphological analysis found that *Mormopterus* was sister to *Platymops* (including *Sauromys*), but our results did not support this view. These 2 species of *Tadarida* (*T. brasiliensis* and *T. aegyptiaca*) joined with the other *Tadarida* species in some of our analyses, forming a poorly supported monophyletic clade in the combined Bayesian tree (Fig. 7).

Legendre (1984a) proposed the genus *Rhizomops* for a single species, *T. brasiliensis*, based on dental morphology. This view was not widely accepted (Owen et al. 1990) and is not warranted based on our results. Based on this phylogenetic analysis of molecular data, it appears that *T. brasiliensis*, *T. aegyptiaca*, and *S. petrophilus* form a monophyletic clade distinct from other *Tadarida* species. Interestingly, this relationship also was recovered in a quantitative analysis of morphology by Freeman (1981:102). Harrison (1962) also thought that *Sauromys* was closely related to *T. aegyptiaca* and, in fact, proposed that it was a transition between *T. aegyptiaca* and *Platymops*. Samples from *P. setiger* will be important for testing this hypothesis. *Sauromys* (as well as *Platymops*) was classified as *Mormopterus* by some authors (Freeman 1981; Koopman 1993, 1994; Legendre 1984a), but not by others (Corbet and Hill 1986; Gregorin 2000; Peterson et al. 1995; Simmons 2005). The level of genetic divergence and the topology recovered in this study regarding *Mormopterus* and *Sauromys* does not support the inclusion of *Sauromys* in the genus *Mormopterus*. To maintain monophyly of the genus, we propose that *Sauromys* is more appropriately recognized as a member of the genus *Tadarida* having split from its sister taxon in this analysis, *T. aegyptiaca*, approximately 6.5 mya. Inclusion of *P. setiger* and additional *Tadarida* species in future studies will be important for determining the extent to which this genus should be applied.

The status of the genus *Tadarida* is complex. The type species for *Tadarida* is *T. teniotis*, but poor resolution in our analyses prevents any definite conclusions regarding the evolutionary position of this genus. According to Peterson et al. (1995), *Tadarida* and genera recently recognized as separate from *Tadarida* (such as *Chaerephon* and *Mops*) have not been adequately diagnosed and share many characteristics with *Eumops*. Our results seem to provide evidence of the distant relationship between *Tadarida* and *Eumops*, clarify the distinct lineage that is *Chaerephon* and *Mops*, and confirm the validity of the genus *Nyctinomops* that was elevated from *Tadarida* by Freeman (1981). Peterson et al. (1995) thought elevation of *Mormopterus* by Freeman (1981) was justified, and our analyses suggest agreement but we cannot adequately resolve the validity of *Mormopterus* without additional samples.

Position of Cheiromeles.—The basal divergence of *Cheiromeles* we observed in this study is consistent with Legendre's (1984a) taxonomic arrangement placing this taxon in its own

subfamily. It is also consistent with the relationships proposed by the quantitative analysis of Freeman (1981:102) that placed *Cheiromeles* outside of even the vespertilionid outgroup. The 2 species of *Cheiromeles* (naked bats) found in Southeast Asia are large-bodied and display unusual morphological traits unlike any other molossid. They are nearly hairless and possess a subaxillary pouch used for wing storage, an opposable thumb, and, finally, a dense protrusion of stiff hairs on the 1st toe of the hind foot (Leong et al. 2009). Their gular sac produces an oily secretion that is applied to their naked wings and skin to maintain the leathery texture (Leong et al. 2009). In Freeman's (1981) monograph on the family Molossidae, she stated that *Cheiromeles* was a derived member of an ancient molossid lineage because it has the most derived dental configuration in the family. In her cladogram, *Cheiromeles* was closely related to *Myopterus*, *Molossops*, and *Mormopterus* but the synapomorphies were not consistent within these genera. Gregorin (2000) found a similar arrangement (Fig. 1) in his cladistic analysis of the family. Because we were not able to generate *Myopterus* sequence for all loci, the sister relationship between *Cheiromeles* and *Myopterus* proposed by Freeman (1981) and supported by the supertree analysis of Jones et al. (2002) could not be adequately tested. However, the other members of this morphologically similar group (Fig. 1) did not cluster with *Cheiromeles* in any of the molecular analyses.

Unresolved phylogenetic position of Myopterus and Otomops.—A New World origin for *Myopterus* was proposed based on Freeman's (1981:119) analysis but because these bats possess an unusual combination of morphological characters, it has been difficult to determine the closest relative of this Old World genus. Our analysis is not conclusive because of missing data in this taxon, but *Myopterus* falls within the Old World clade in our combined analysis (Fig. 8). This poorly supported result as well as the position of *Otomops* in the Old World clade should be considered inconclusive at this point.

Divergence patterns in the family Molossidae.—Divergence of Molossidae from Vespertilionidae and Miniopteridae was estimated between 54 and 43 mya by Miller-Butterworth et al. (2007). Jones et al. (2005) and Teeling et al. (2005) had similar estimates for the origin of the family. Our analysis suggests that the family Molossidae originated even earlier (Paleocene, 63 mya [95% highest posterior density; 51, 75] \pm 12) and fossil evidence suggests that at least 1 lineage represented by the fossil *Wallia scalopidens* was present in North America 42–44 mya (Legendre 1985; Storer 1984). A fossil history for this 20-million-year gap is unaccounted for and is consistent with calculations by Teeling et al. (2005) that the fossil record underestimates the origin of bat lineages by an average of 73%. The 2nd oldest molossid fossil, *Cuviermops*, is from 39 mya in France. Both of these early fossils show that the molossid group was already diverse in the middle Eocene. However, because our divergence date for the origin of the family was earlier than expected based on previous studies (Miller-Butterworth et al. 2007; Teeling et al. 2005), we conducted another BEAST analysis using the same

minimum constraint for divergence of the molossid lineage as these studies did (37 mya). The divergence of molossids from the outgroup was estimated at 44.2 mya (data not shown) when the younger constraint was used. Thus, it appears that the older estimate (63 mya) for the origin of the family was a result of using different fossil priors.

Both a Eurasian origin (Teeling et al. 2005) and an African origin (Eick et al. 2005; Lim 2009) have been proposed for the family Molossidae, but conclusions were equivocal in these studies. Examination of our data cannot reject either hypothesis. In any case, based on fossil discoveries, dispersal to North America must have occurred before mid-Eocene. Dispersal to North America could have occurred along the common trans-Atlantic route used by several groups in the Paleocene–Eocene but Beringia also would have been a possible route at this time (Sanmartin et al. 2001). After dispersal to North America, subsequent global cooling and drying trends in the mid- to late Eocene (Zachos et al. 2001) could have contributed to isolation or extinction of some of these early molossid lineages. Persistence of molossids in Southeast Asia is likely because the severity of global cooling was not as great here during this time and tropical habitats persisted (Tsubamoto et al. 2004). However, without sequence data from *Tomopeas* and *Mormopterus* from the New World it is difficult to fully understand the origins of the family and to distinguish among dispersal hypotheses.

The next major event in the divergence of molossid groups is the split between the Old World and New World clades that took place around 28.7 mya (Fig. 8). One scenario that could describe this event is dispersal and subsequent radiation of a common ancestor of the New World clade from the Old World. This scenario also has been proposed for the divergence of Old World and New World emballonurid lineages (Teeling et al. 2005) around 30 mya via a "rafting" or "island hopping" event from Africa, as has been hypothesized for caviomorph rodents and primates (Flynn and Wyss 1998). Vicariance is another possible scenario. If lineages that were already in South America were separated from the Old World lineages due to cooling temperatures in the north, it would have reinforced their isolation. This hypothesis is consistent with the occurrence of the fossil of the now extinct *Mormopterus faustoi* from Brazil (Czaplewski et al. 2003; Legendre 1984b; Paulo Couto 1983) that shows molossid lineages were established in South America in the Oligocene. Around the Oligocene–Miocene boundary were a series of intermittent glaciations that subsequently could have promoted speciation and rapid divergence of lineages within the Old World and the New World clades (Zachos et al. 2001). In fact, there are at least 5 divergence events within each clade that occur close together in time and correspond to the Oligocene–Miocene boundary.

The close relationship of the North and South American species, *T. brasiliensis*, with *Sauromys* and *T. aegyptiaca* from Africa requires a biogeographic explanation. Morgan (1991) hypothesized a Neotropical origin for *Tadarida* and subsequent movement into North America at the Interchange in the

late Pliocene. An alternate hypothesis (Czaplewski et al. 2003) supported by fossil evidence is that the genus *Tadarida* originated in Eurasia, immigrated to North America in the Miocene, and then moved into South America during the late Pliocene continental interchange. The 2nd hypothesis fits our topology and the divergence dates in our analysis for the separation of *T. brasiliensis* from the African sister taxa at 18 (14.1–21.9) mya. This lineage might have dispersed across the Bering land bridge but transoceanic dispersal from Africa cannot be ruled out, especially for the ancestor of a species that is known to be able to migrate hundreds of miles at very high altitudes and cover long foraging distances (Cockrum 1969; Williams et al. 1973). Similarly, it is not necessary to hypothesize arrival of this taxon in South America after the closing of the Panamanian isthmus. The presence of the hoary bat (*Lasiurus cinereus*) in Hawaii is further evidence that it is not necessary to invoke land bridges to explain the dispersal of bat lineages. Lim (2009) hypothesized 5 different dispersal events within Molossidae from Africa to South America. However, he acknowledged uncertainty with this hypothesis because of the lack of a comprehensive phylogenetic hypothesis for the family.

We recovered several species pairs with recent divergences (less than 2 mya [Fig. 8]). Three of these species pairs contained members from Madagascar and Africa (*C. pumilus-leucogaster*, *M. condylurus-leucostigma*, and *Otomops martiensseni-madagascarensis*). These results suggest at least 3 separate dispersal events by molossid bats to Madagascar and are consistent with previous work on these genera (Lamb et al. 2008; Ratrimomanarivo et al. 2009a).

Conclusions.—Our results generally are not congruent with traditional morphological hypotheses of relationship but are most similar to Legendre's (1984a) classification scheme. Simmons (1998) suggests that the 2 molossid subfamilies (Molossinae and Tomopeatinae) should be retained and an additional subdivision should be recognized at the tribal level.

We agree and therefore propose a subdivision of the subfamily Molossinae into 4 tribes: tribe Molossini containing the New World taxa (*Molossus*, *Eumops*, *Molossops*, *Cynomops*, *Neoplatomops*, *Nyctinomops*, and *Promops*), tribe Tadarini containing Old World taxa (*Tadarida*, *Chaerephon*, *Mops*, *Platymops*, *Sauromys*, *Myopterus*, and *Otomops*), tribe Cheiromelini, and tribe Mormopterini. Without additional data, it is impossible to know if subfamily Tomopeatinae is a valid separate lineage or alternatively is a member of Simmon's (2005) Molossinae. The only molecular analysis to include *Tomopeas* (Sudman et al. 1994) could not address this question because their study included only New World members of the family Molossidae. Until new material becomes available, this question will be difficult to answer.

An understanding of the evolutionary history of this group is essential for interpreting and understanding decades of comparative studies (cranial morphology, penile morphology, genetics, echolocation, ecology, reproductive physiology, and neurophysiology) that have been conducted in the absence of a rigorous phylogenetic framework (Arletta et al. 2000; Brown

1967; Gregorin 2003; Lim 2009; Reichart et al. 2010; Smith et al. 1986; Warner et al. 1974). Furthermore, a well-supported phylogeny is necessary for understanding factors affecting the prevalence, transmission, and history of diseases, as well as the emergence of new diseases such as Ebola virus that has been found to replicate in 2 molossid species (Swanepoel et al. 1996). We consider the phylogenetic hypothesis presented here to be the 1st step to understanding evolutionary patterns in this group. Undoubtedly, additional taxa and additional genes in future studies will clarify the hypotheses of relationship in Molossidae.

ACKNOWLEDGMENTS

We extend our deepest gratitude to the following individuals and institutions for their contributions of tissue loans and specimen data, without which this project would not have been possible: F. Anwarali, R. Baker, and H. Garner (Natural Science Research Laboratory, Texas Tech University); P. Benda (National Museum of Prague); J. Bickham (Purdue University); A. Bishop and R. Dowler (Angelo State Natural History Collections, Angelo State University); A. Cleveland (California Baptist University); J. Eger (Royal Ontario Museum); G. Eick and D. Jacobs (University of Stellenbosch); J. Fahr (University of Ulm); B. Patterson, J. Phelps, S. Goodman, and W. Stanley (Field Museum); D. Dittmann and M. Hafner (Louisiana State University Museum of Zoology, Louisiana State University); A. Gardner and K. Helgen (National Museum of Natural History); T. Kunz (Boston University); T. Lee (Abilene Christian University Museum of Natural History, Abilene Christian University); S. McLaren (Carnegie Museum of Natural History); J. Patton (Museum of Vertebrate Zoology, University of California Berkeley); S. Rossiter (Queen Mary, University of London); P. Taylor (Durban Natural Science Museum, Durban, South Africa); R. Timm (University of Kansas Natural History Museum, University of Kansas); and R. Van Den Bussche (Oklahoma State University). We thank the Economic Planning Unit of the Malaysian Prime Minister's Department, Department of Wildlife and National Parks, Universiti Malaysia Sarawak, M. T. Abdullah, and the Sarawak Forest Corporation for permission to use samples in this study. We also acknowledge the following students for help in the laboratory: R. Dolman, G. Hernandez, and M. McDonough. Special thanks to J. Apodaca and R. Rodriguez for use of their sequences in this project; to J. Lack for help with BEAST analyses; and to P. Freeman, M. Dixon, and M. McDonough for their input. Finally, this project was funded by an Angelo State University Faculty Innovation Grant, a Tri-Beta Research Grant, a Texas Academy of Science Grant, and a Carr Student Research Grant.

LITERATURE CITED

- AGNARSSON, I., C. M. ZAMBRANA-TORRELIO, N. P. FLORES-SALDAÑA, AND L. J. MAY-COLLADO. 2011. A time calibrated species-level phylogeny of bats (Chiroptera, Mammalia). *PLoS Currents: Tree of Life* 4:3:RRN1212.
- ARLETTAZ, R., C. RUCHET, J. AESCHIMANN, E. BRUN, M. GENOUD, AND P. VOGEL. 2000. Physiological traits affecting the distribution and wintering strategy of the bat *Tadarida teniotis*. *Ecology* 81:1004–1014.
- BAKER, R. J., S. R. HOOVER, C. A. PORTER, AND R. A. VAN DEN BUSSCHE. 2003. Diversification among New World leaf-nosed bats: an evolutionary hypothesis and classification inferred from digenomic congruence of DNA sequence. *Occasional Papers, Museum of Texas Tech University* 230:1–32.

- BAKER, R. J., M. M. McDONOUGH, V. J. SWIER, P. A. LARSEN, J. P. CARRERA, AND L. K. AMMERMAN. 2009. New species of bonneted bat, genus *Eumops* (Chiroptera: Molossidae) from the lowlands of western Ecuador and Peru. *Acta Chiropterologica* 11:1–13.
- BERNARD, E., AND M. B. FENTON. 2002. Species diversity of bats (Mammalia: Chiroptera) in forest fragments, primary forests, and savannas in central Amazonia, Brazil. *Canadian Journal of Zoology* 80:1124–1140.
- BROWN, R. E. 1967. Bacula of some New World molossid bats. *Mammalia* 31:643–667.
- COCKRUM, E. L. 1969. Migration in the guano bat, *Tadarida brasiliensis*. Miscellaneous Publications, Museum of Natural History, University of Kansas 51:303–336.
- COLGAN, D. J., AND P. DA COSTA. 2002. Megachiropteran evolution studied with 12S rDNA and *c-mos* DNA sequences. *Journal of Mammalian Evolution* 9:3–22.
- CORBET, G. B., AND J. E. HILL. 1986. A world list of mammalian species. British Museum (Natural History), London, United Kingdom.
- CORBET, G. B., AND J. E. HILL. 1992. The mammals of the Indomalayan region. Oxford University Press, New York.
- CUNNINGHAM, C. W. 1997. Can three incongruence tests predict when data should be combined? *Molecular Biology and Evolution* 14:733–740.
- CZAPLEWSKI, N. J., G. S. MORGAN, AND T. NAEHER. 2003. Molossid bats from the late Tertiary of Florida with a review of the Tertiary Molossidae of North America. *Acta Chiropterologica* 5:61–74.
- DÁVALOS, L. M. 2005. Molecular phylogeny of funnel-eared bats (Chiroptera: Natalidae), with notes on biogeography and conservation. *Molecular Phylogenetics and Evolution* 37:91–103.
- DE LA TORRE-BARCENA, J. E., ET AL. 2009. The impact of outgroup choice and missing data on major seed plant phylogenetics using genome-wide EST data. *PLOS ONE* 4:e5764.
- DE QUIEROZ, A. 1993. For consensus (sometimes). *Systematic Biology* 42:368–372.
- DRUMMOND, A. J., G. K. NICHOLLS, A. G. RODRIGO, AND W. SOLOMON. 2002. Estimating mutation parameters, population history and genealogy simultaneously from temporarily spaced sequence data. *Genetics* 161:1307–1320.
- DRUMMOND, A. J., AND A. RAMBAUT. 2007. BEAST: Bayesian evolutionary analysis by sampling trees. *BMC Evolutionary Biology* 7:214.
- EGER, J. L. 2007. Family Molossidae P. Gervais, 1856. Pp. 399–440 in *Mammals of South America* (A. L. Gardner, ed.). University of Chicago Press, Chicago, Illinois.
- EICK, G. N., D. S. JACOBS, AND C. A. MATTHEE. 2005. A nuclear DNA phylogenetic perspective on the evolution of echolocation and historical biogeography of extant bats (Chiroptera). *Molecular Biology and Evolution* 22:1869–1886.
- FAHR, J., AND N. M. EBIGBO. 2003. A conservation assessment of the bats of the Simandou Range, Guinea, with the first record of *Myotis welwitschii* (Gray, 1866) from West Africa. *Acta Chiropterologica* 5:125–141.
- FARRIS, J. S., M. KÄLLERSJÖ, A. G. KLUGE, AND C. BULT. 1995. Testing significance of incongruence. *Cladistics* 10:315–319.
- FELSENSTEIN, J. 1981. Evolutionary trees and DNA sequences: a maximum likelihood approach. *Journal of Molecular Evolution* 17:368–376.
- FELSENSTEIN, J. 1985. Confidence limits on phylogenies: an approach using bootstrap. *Evolution* 39:783–791.
- FLYNN, J. J., AND A. R. WYSS. 1998. Recent advances in South American mammalian palaeontology. *Trends in Ecology & Evolution* 13:449–454.
- FREEMAN, P. W. 1981. A multivariate study of the family Molossidae (Mammalia: Chiroptera): morphology, ecology, evolution. *Fieldiana: Zoology (New Series)* 7:1–173.
- GADAGKAR, S., M. ROSENBERG, AND S. KUMAR. 2005. Inferring species phylogenies from multiple genes: concatenated sequence tree versus consensus gene tree. *Journal of Experimental Zoology, B. Molecular and Developmental Evolution* 304:64–74.
- GONZÁLEZ-RUIZ, N., J. RAMÍREZ-PULIDO, AND J. ARROYO-CABRALES. 2011. A new species of mastiff bat (Chiroptera: Molossidae: *Molossus*) from Mexico. *Mammalian Biology* 76:461–469.
- GOODMAN, S. M., AND S. G. CARDIFF. 2004. A new species of *Chaerephon* (Molossidae) from Madagascar with notes on other members of the family. *Acta Chiropterologica* 6:227–248.
- GOODMAN, S. M., B. JANSEN VAN VUUREN, F. RATRIMOMANARIVO, J.-M. PROBST, AND R. C. K. BOWIE. 2008. Specific status of populations in the Mascarene Islands referred to *Momopterus acetabulosus* (Chiroptera: Molossidae), with description of a new species. *Journal of Mammalogy* 89:1316–1327.
- GREGORIN, R. 2000. Filogenia de Molossidae Gervais, 1856 (Mammalia: Chiroptera). Ph.D. dissertation, Universidade de São Paulo, São Paulo, Brazil.
- GREGORIN, R. 2003. Comparative morphology of the tongue in free-tailed bats (Chiroptera, Molossidae). *Iheringia, Série Zoologia* 93:213–221.
- HARRISON, D. L. 1962. On bats collected on the Limpopo River, with the description of a new race of the tomb bat, *Taphozous sudani* Thomas, 1915. *Occasional Papers of the National Museum of Southern Rhodesia, B. Natural Sciences* 26:756–766.
- HICE, C. L., P. M. VELAZCO, AND M. R. WILLIG. 2004. Bats of the Reserva Nacional Allpahuayo-Mishana, northeastern Peru, with notes on community structure. *Acta Chiropterologica* 6:319–344.
- HILLIS, D. M., AND J. J. BULL. 1993. An empirical test of bootstrapping as a method for assessing confidence in phylogenetic analysis. *Systematic Biology* 42:182–192.
- HOOFFER, S. R., AND R. A. VAN DEN BUSSCHE. 2003. Molecular phylogenetics of the chiropteran family Vespertilionidae. *Acta Chiropterologica* 5, supplement:1–63.
- JACOBS, D. S., G. N. EICK, E. J. RICHARDSON, AND P. J. TAYLOR. 2004. Genetic similarity amongst phenotypically diverse little free-tailed bats, *Chaerephon pumilus*. *Acta Chiropterologica* 6:13–21.
- JONES, G., AND J. RYDELL. 2003. Attack and defense: interactions between echolocating bats and their insect prey. Pp. 301–345 in *Bat ecology* (T. H. Kunz and M. B. Fenton, eds.). University of Chicago Press, Chicago, Illinois.
- JONES, K. E., O. R. P. BININDA-EMONDS, AND J. L. GITTLEMAN. 2005. Bats, clocks, and rocks: diversification patterns in Chiroptera. *Evolution* 59:2243–2255.
- JONES, K. E., A. PURVIS, A. MACLARNON, O. R. P. BININDA-EMONDS, AND N. B. SIMMONS. 2002. A phylogenetic supertree of the bats (Mammalia: Chiroptera). *Biological Reviews* 77:223–259.
- KOOPMAN, K. F. 1984. Bats. Pp. 145–186 in *Orders and families of Recent mammals of the World* (S. Anderson and J. K. Jones, Jr., eds.). John Wiley & Sons, Inc., New York.
- KOOPMAN, K. F. 1993. Order Chiroptera. Pp. 137–241 in *Mammal species of the world: a taxonomic and geographic reference* (D. E. Wilson and D. M. Reeder, eds.). 2nd ed. Smithsonian Institution Press, Washington, D.C.
- KOOPMAN, K. F. 1994. Chiroptera: systematics. *Handbook of zoology, Mammalia part 60*. Walter de Gruyter, Berlin, Germany.
- LAMB, J. M., ET AL. 2006. Phylogeography of southern and northeastern African populations of *Otomops martiensseni* (Chiroptera: Molossidae). *Durban Museum Novitates* 31:42–53.

- LAMB, J. M., ET AL. 2008. Phylogeography and predicted distribution of African–Arabian and Malagasy populations of giant mastiff bats, *Otomops* spp. (Chiroptera: Molossidae). *Acta Chiropterologica* 10:21–40.
- LEE, T. E., S. F. BURNEO, T. J. COCHRAN, AND D. CHAVEZ. 2010. Small mammals of Santa Rosa, southwestern Imbabura Province, Ecuador. *Occasional Papers, Museum of Texas Tech University* 290:1–16.
- LEGENDRE, S. 1984a. Étude odontologique des représentants actuels du groupe *Tadarida* (Chiroptera, Molossidae). Implications phylogéniques, systématiques et zoogéographiques. *Revue Suisse de Zoologie* 91:399–442.
- LEGENDRE, S. 1984b. Identification de deux sous-genres fossils et compréhension phylogénique du genre *Mormopterus* (Molossidae, Chiroptera). *Comptes Rendus de l'Académie des Sciences, Paris, Série 2*, 298:715–720.
- LEGENDRE, S. 1985. Molossidé (Mammalia: Chiroptera) cénozoïques de l'Ancien et du Nouveau Monde: statut systématique; intégration phylogénique de données. *Neues Jahrbuch für Geologie und Paläontologie, Abhandlungen* 170:205–227.
- LEONG, T. M., S. C. TEO, AND K. K. P. LIM. 2009. The naked bulldog bat, *Cheiromeles torquatus* in Singapore—past and present records, with highlights on its unique morphology (Microchiroptera: Molossidae). *Nature in Singapore* 2:215–230.
- LEWIS-ORITT, N., C. A. PORTER, AND R. J. BAKER. 2001. Molecular systematics of the family Mormoopidae (Chiroptera) based on cytochrome *b* and recombination activating gene 2 sequences. *Molecular Phylogenetics and Evolution* 20:426–436.
- LIM, B. K. 2009. Review of the origins and biogeography of bats in South America. *Chiroptera Neotropical* 15:391–410.
- LIM, B. K., M. D. ENGSTROM, J. W. BICKHAM, AND J. C. PATTON. 2008. Molecular phylogeny of New World sheath-tailed bats (Emballonuridae: Diclidurini) based on loci from the four genetic transmission systems in mammals. *Biological Journal of the Linnean Society London* 93:189–209.
- LONGMIRE, J. L., M. MALTBIÉ, AND R. J. BAKER. 1997. Use of “lysis buffer” in DNA isolation and its implications for museum collections. *Occasional Papers, The Museum, Texas Tech University* 163:1–3.
- MILLER, G. S. 1907. The families and genera of bats. *Bulletin of the United States National Museum* 57:1–282.
- MILLER-BUTTERWORTH, C. M., W. J. MURPHY, S. J. O'BRIEN, D. S. JACOBS, M. S. SPRINGER, AND E. C. TEELING. 2007. A family matter: conclusive resolution of the taxonomic position of the long-fingered bats, *Miniopterus*. *Molecular Biology and Evolution* 24:1553–1561.
- MORGAN, G. S. 1991. Neotropical Chiroptera from the Pliocene and Pleistocene of Florida. *Bulletin of the American Museum of Natural History* 206:176–213.
- OWEN, R. D., R. K. CHESSER, AND D. C. CARTER. 1990. The systematic status of *Tadarida brasiliensis cynocephala*, and Antillean members of the *Tadarida brasiliensis* group, with comments on the generic name *Rhizomops* Legendre. *Occasional Papers, The Museum, Texas Tech University* 133:1–18.
- PAULA COUTO, C. DE. 1983. Geochronology and paleontology of the basin of Tremembé-Taubaté, state of São Paulo, Brazil. *Iheringia. Série Geologia* 8:5–31.
- PETERS, S. L., B. K. LIM, AND M. D. ENGSTROM. 2002. Systematics of dog-faced bats (*Cynomops*) based on molecular and morphometric data. *Journal of Mammalogy* 83:1097–1110.
- PETERSON, R. L. 1965. A review of the flat-headed bats of the family Molossidae from South America and Africa. *Life Sciences Contribution, Royal Ontario Museum* 64:1–32.
- PETERSON, R. L., J. L. EGER, AND L. MITCHELL. 1995. Chiroptères. *Faune de Madagascar* 84:1–204.
- PETIT, E., L. EXCOFFIER, AND F. MAYER. 1999. No evidence of bottleneck in the postglacial recolonization of Europe by the noctule bat (*Nyctalus noctula*). *Evolution* 53:1247–1258.
- POSADA, D., AND K. A. CRANDALL. 1998. Modeltest: testing the model of DNA substitution. *Bioinformatics* 14:817–818.
- PRYCHITKO, T. M., AND W. S. MOORE. 1997. The utility of DNA sequences of an intron from the β -fibrinogen gene in phylogenetic analysis of woodpeckers (Aves: Picidae). *Molecular Phylogenetics and Evolution* 8:193–204.
- RAMBAUT, A. AND A. J. DRUMMOND. 2007. Tracer v. 1.4. <http://beast.bio.ed.ac.uk/Tracer>. Accessed 30 August 2010.
- RATRIMOMANARIVO, F. H., S. M. GOODMAN, W. T. STANLEY, T. NAIDOO, P. J. TAYLOR, AND J. LAMB. 2009a. Geographic and phylogeographic variation in *Chaerephon leucogaster* (Chiroptera: Molossidae) of Madagascar and the western Indian Ocean islands of Mayotte and Pemba. *Acta Chiropterologica* 11:25–52.
- RATRIMOMANARIVO, F. H., S. M. GOODMAN, P. J. TAYLOR, B. MELSON, AND J. LAMB. 2009b. Morphological and genetic variation in *Mormopterus jugularis* (Chiroptera: Molossidae) in different bioclimatic regions of Madagascar with natural history notes. *Mammalia* 73:110–129.
- RATRIMOMANARIVO, F. H., J. VIVIAN, S. M. GOODMAN, AND J. LAMB. 2007. Morphological and molecular assessment of the specific status of *Mops midas* (Chiroptera: Molossidae) from Madagascar and Africa. *African Zoology* 42:237–253.
- REARDON, T. B., M. ADAMS, N. MCKENZIE, AND P. JENKINS. 2008. A new species of Australian freetail bat *Mormopterus eleryi* sp. nov. (Chiroptera: Molossidae) and a taxonomic reappraisal of *M. norfolkensis* (Gray). *Zootaxa* 1875:1–31.
- REICHART, J. D., S. I. PRAJAPATI, S. N. AUSTAD, C. KELLER, AND T. H. KUNZ. 2010. Thermal windows on Brazilian free-tailed bats facilitate thermoregulation during prolonged flight. *Integrative and Comparative Biology* 50:358–370.
- ROEHRS, Z. P., J. B. LACK, AND R. A. VAN DEN BUSSCHE. 2010. Tribal phylogenetic relationships within Vespertilioninae (Chiroptera: Vespertilionidae) based on mitochondrial and nuclear sequence data. *Journal of Mammalogy* 91:1073–1092.
- RONQUIST, F., AND J. P. HUELSENBECK. 2003. MrBayes 3: Bayesian phylogenetic inference under mixed models. *Bioinformatics* 19:1572–1574.
- ROSEVEAR, D. R. 1965. The bats of West Africa. *British Museum (Natural History), London, United Kingdom*.
- RUEDI, M., AND F. MAYER. 2001. Molecular systematics of bats of the genus *Myotis* (Vespertilionidae) suggests deterministic ecomorphological convergences. *Molecular Phylogenetics and Evolution* 21:436–448.
- RYDELL, J., AND D. W. YALDEN. 1997. The diets of two high-flying bats from Africa. *Journal of Zoology (London)* 242:69–76.
- SANDERSON, M. J. 2003. r8s: inferring absolute rates of molecular evolution and divergence times in the absence of a molecular clock. *Bioinformatics* 19:301–302.
- SANMARTIN, I., H. ENGHOF, AND F. RONQUIST. 2001. Patterns of animal dispersal, vicariance, and diversification in the Holarctic. *Biological Journal of the Linnean Society* 73:345–390.
- SIMMONS, N. B. 1998. A reappraisal of interfamilial relationships of bats. Pp. 3–26 in *Bat biology and conservation* (T. H. Kunz and P. A. Racey, eds.). Smithsonian Institution Press, Washington, D.C.

- SIMMONS, N. B. 2005. Order Chiroptera. Pp. 312–529 in *Mammal species of the world: a taxonomic and geographic reference* (D. E. Wilson and D. M. Reeder, eds.). 3rd ed. Johns Hopkins University Press, Baltimore, Maryland.
- SMITH, S. A., J. W. BICKHAM, AND D. A. SCHLITTER. 1986. Karyotypes of eleven species of molossid bats from Africa (Mammalia: Chiroptera). *Annals of Carnegie Museum* 55:125–136.
- STADELMANN, B., L.-K. LIN, T. H. KUNZ, AND M. RUEDI. 2007. Molecular phylogeny of New World *Myotis* (Chiroptera, Vespertilionidae) inferred from mitochondrial and nuclear DNA genes. *Molecular Phylogenetics and Evolution* 43:32–48.
- STANLEY, W. T. 2008. A new species of *Mops* (Molossidae) from Pemba Island, Tanzania. *Acta Chiropterologica* 10:183–192.
- STORER, J. E. 1984. Mammals of the Swift Current Creek local fauna (Eocene: Uintan, Saskatchewan). *Saskatchewan Museum of Natural History Contributions* 7:1–144.
- STRUEBIG, M. J., ET AL. 2005. Results of a recent bat survey in Upper Myanmar including new records from the Kachin forests. *Acta Chiropterologica* 7:147–163.
- SUDMAN, P. D., L. J. BARKLEY, AND M. S. HAFNER. 1994. Familial affinity of *Tomopeas ravus* (Chiroptera) based on protein electrophoretic and cytochrome *b* sequence data. *Journal of Mammalogy* 75:365–377.
- SUZUKI, Y., G. V. GLAZKO, AND M. NEI. 2002. Overcredibility of molecular phylogenies obtained by Bayesian phylogenetics. *Proceedings of the National Academy of Sciences* 99:16138–16143.
- SWANEPOEL, R., ET AL. 1996. Experimental inoculation of plants and animals with Ebola virus. *Emerging Infectious Diseases* 2:321–325.
- SWOFFORD, D. L. 2003. PAUP*: phylogenetic analysis using parsimony (*and other methods), version 4.0b10. Sinauer Associates, Inc., Publishers, Sunderland, Massachusetts.
- TAMURA K., J. DUDLEY, M. NEI, AND S. KUMAR. 2007. *MEGA4: Molecular Evolutionary Genetics Analysis (MEGA) software version 4.0*. *Molecular Biology and Evolution* 24:1596–1599.
- TAYLOR, P. J., J. LAMB, D. REDDY, T. NAIDOO, F. RATRIMOMANARIVO, AND S. M. GOODMAN. 2009. Cryptic lineages of little free-tailed bats, *Chaerephon pumilus* (Chiroptera: Molossidae) from southern Africa and the western Indian Ocean islands. *African Zoology* 44:55–70.
- TEELING, E. C., O. MADSEN, R. A. VAN DEN BUSSCHE, W. W. DE JONG, M. J. STANHOPE, AND J. S. SPRINGER. 2002. Microbat paraphyly and the convergent evolution of a key innovation in Old World rhinolophoid microbats. *Proceedings of the National Academy of Sciences* 99:1431–1436.
- TEELING, E. C., M. S. SPRINGER, O. MADSEN, P. BATES, S. J. O'BRIEN, AND W. J. MURPHY. 2005. A molecular phylogeny for bats illuminates biogeography and the fossil record. *Science* 307:580–584.
- TIMM, R. M., AND H. H. GENOWAYS. 2004. The Florida bonneted bat, *Eumops floridanus* (Chiroptera: Molossidae): distribution, morphometrics, systematics, and ecology. *Journal of Mammalogy* 85:852–865.
- TSUBAMOTO, T., M. TAKAI, AND N. EGI. 2004. Quantitative analyses of biogeography and faunal evolution of middle to late Eocene mammals in East Asia. *Journal of Vertebrate Paleontology* 24:657–667.
- VAN DEN BUSSCHE, R. A., S. A. REEDER, E. W. HANSEN, AND S. R. HOOVER. 2003. Utility of the dentin matrix protein 1 (*DMP1*) gene for resolving mammalian intraordinal phylogenetic relationships. *Molecular Phylogenetics and Evolution* 26:89–101.
- WARNER, J. W., J. L. PATTON, A. L. GARDNER, AND R. J. BAKER. 1974. Karyotypic analysis of twenty-one species of molossid bats (Molossidae: Chiroptera). *Canadian Journal of Genetics and Cytology* 16:165–176.
- WIENS, J. J. 2003. Missing data, incomplete taxa, and phylogenetic accuracy. *Systematic Biology* 52:528–538.
- WILLIAMS, T. C., L. C. IRELAND, AND J. M. WILLIAMS. 1973. High altitude flights of the free-tailed bats, *Tadarida brasiliensis*, observed with radar. *Journal of Mammalogy* 54:807–821.
- WILLIG, M. R., AND J. K. JONES, JR. 1985. *Neoplattymops matto-grossensis*. *Mammalian Species* 244:1–3.
- ZACHOS, J., M. PAGANI, L. SLOAN, E. THOMAS, AND K. BILLUPS. 2001. Trends, rhythms, and aberrations in global climate 65 Ma to present. *Science* 292:686–693.

Submitted 21 March 2011. Accepted 7 July 2011.

Associate Editor was David S. Jacobs.

APPENDIX I

List of specimens sequenced in this study.

Species	Locality	Tissue no./museum no. ^a	GenBank accession nos.			
			<i>ND1</i>	<i>DMP1</i>	<i>βFIB</i>	<i>RAG2</i>
<i>Chaerephon</i>						
<i>Chaerephon jobimena</i>	Madagascar: Province d'Antsiranana	SMG13706/FMNH176329	HQ671527	—	—	—
<i>Chaerephon leucogaster</i>	Madagascar: Province d'Antsiranana	SMG13773/FMNH176330	HQ671525	HQ671560	—	HQ671582
<i>Chaerephon plicatus</i>	China: Yunnan Province	BRS81/MVZ176519	HQ671528	—	HQ671606	—
<i>Chaerephon plicatus</i>	China: Yunnan Province	BRS77/MVZ192573	—	HQ671561	—	HQ671581
<i>Charephon pumilus</i>	Uganda: South Buganda: Masaka	JCK1515/FMNH137634	HQ671526	—	HQ671607	—
<i>Cheiromeles</i>						
<i>Cheiromeles torquatus</i>	Malaysia: Sarawak	TK157700/UNIMAS1652	HQ671529	—	—	HQ671583
<i>Cynomops</i>						
<i>Cynomops abrasus</i>	Brazil: Rondonia; Cachoeira Nazare, Rio Ji-Parana	BDP2178/—	HQ671530	HQ671562	—	HQ671584
<i>Eumops</i>						
<i>Eumops auripendulus</i>	Ecuador: Napo; Parque Nacional Yasuni	F37759/ROM105526	HQ671531	HQ671563	HQ671608	HQ671585
<i>Eumops dabbenei</i>	Venezuela: Guarico	TK15063/TTU33406	—	—	HQ671609	—
<i>Eumops ferox</i>	Cuba: Guantanamo Province	TK32033/TTU52479	HQ671532	HQ671564	HQ671610	HQ671588
<i>Eumops floridanus</i>	USA: Florida: Lee County	RMT4610/KU163656	—	HQ671565	—	—
<i>Eumops floridanus</i>	USA: Florida: Lee County	RMT4611/KU163657	HQ671533	—	—	—
<i>Eumops hansae</i>	Ecuador: Napo; Parque Nacional Yasuni	F37887/ROM105642	—	HQ671566	—	HQ671586
<i>Eumops hansae</i>	Guyana: Potaro-Siparuni; Iwokrama Reserve	F43341/ROM108361	HQ671534	—	—	—
<i>Eumops maurus</i>	Ecuador: Napo; Parque Nacional Yasuni	F40481/ROM106326	—	—	HQ671611	—
<i>Eumops patagonicus</i>	Paraguay: Neembucu; Estancia Yacare	TK64364/TTU80620	—	—	HQ671612	HQ671587
<i>Eumops patagonicus</i>	Paraguay: Neembucu; Estancia Yacare	TK64367/TTU80582	HQ671535	—	—	—
<i>Eumops patagonicus</i>	Paraguay: Pte. Hayes; Estancia Samaklay	TK64850/TTU80491	—	HQ671567	—	—
<i>Eumops perotis</i>	USA: Texas: Brewster County	ASK5379/ASNHC12238	—	—	HQ671613	—
<i>Eumops underwoodi</i>	Nicaragua: Boaco; Los Cocos	TK12366/TTU29311	—	—	HQ671614	—
<i>Eumops wilsoni</i>	Ecuador: Guayas; Isla Puna	TK134989/TTU103466	HQ671536	—	—	—
<i>Molossops</i>						
<i>Molossops temminckii</i>	Paraguay: San Pedro	TK56970/—	HQ671542	HQ671568	—	—
<i>Molossus</i>						
<i>Molossus molossus</i>	Guyana: Upper Demerara-Berbice	TK86606/USNM582427	HQ671537	—	—	—
<i>Molossus molossus</i>	Ecuador: El Oro Province	ASK7785/QCAZ8618	HQ671538	—	—	HQ671590
<i>Molossus molossus</i>	Ecuador: El Oro Province	ASK7777/QCAZ8610	—	HQ671569	—	—
<i>Molossus rufus</i>	Peru: Cusco	TK70494/MUSM13742	HQ671539	—	HQ671616	HQ671591
<i>Mops</i>						
<i>Mops condylurus</i>	South Africa: Sugarloaf Camp, St. Lucia	DSJ63/— ^b	HQ671540	HQ671570	HQ671617	HQ671589
<i>Mops leucostigma</i>	Madagascar: Province de Toliara	SMG13232/FMNH176041	HQ671541	—	—	HQ671592
<i>Mops mops</i>	Malaysia: Krau	SJR0189/— ^b	—	—	HQ671618	—
<i>Mormopterus</i>						
<i>Mormopterus jugularis</i>	Madagascar: Province d'Antsiranana	SMG13699/FMNH176341	HQ671543	HQ671571	—	—
<i>Myopterus</i>						
<i>Myopterus daubentonii</i>	Ivory Coast: Comoe National Park	UU84/— ^b	HQ671545	—	—	—
<i>Myopterus daubentonii</i>	Ivory Coast: Comoe National Park	UU83/— ^b	HQ671544	—	—	—

APPENDIX.—Continued.

Species	Locality	Tissue no./museum no. ^a	GenBank accession nos.			
			<i>ND1</i>	<i>DMP1</i>	<i>βFIB</i>	<i>RAG2</i>
<i>Neoplatymops</i>						
<i>Neoplatymops mattogrossensis</i>	Brazil: Rondonia; Cachoeira Nazare, Rio Ji-Parana	ALG14933/—	HQ671546	HQ671574	—	—
<i>Neoplatymops mattogrossensis</i>	Brazil: Rondonia; Cachoeira Nazare, Rio Ji-Parana	BDP2123/—	—	—	—	HQ671595
<i>Nyctinomops</i>						
<i>Nyctinomops aurispinosus</i>	Peru: Lambayeque Department	M281/LSUMZ25021	HQ671547	—	—	HQ671593
<i>Nyctinomops femorosaccus</i>	USA: Texas: Brewster County	ASK5446/ASNHC11528	HQ671548	—	HQ671620	—
<i>Nyctinomops femorosaccus</i>	USA: Texas: Terrell County	ASK6006/ASNHC11587	—	HQ671572	—	—
<i>Nyctinomops macrotis</i>	USA: Texas: Brewster County	ASK5445/ASNHC11533	HQ671549	—	HQ671619	—
<i>Nyctinomops macrotis</i>	USA: Texas: Brewster County	ASK6001/ASNHC11588	—	HQ671573	—	HQ671594
<i>Otomops</i>						
<i>Otomops madagascariensis</i>	Madagascar: Province d'Antsiranana	SMG13707/FMNH176354	HQ671550	—	—	—
<i>Otomops martiensseni</i>	South Africa	DNSM6774/— ^b	—	HQ671575	—	—
<i>Otomops martiensseni</i>	Burundi: Muramuya; Nyabudida	JCK967/FMNH137633	HQ671551	—	HQ671624	HQ671596
<i>Promops</i>						
<i>Promops centralis</i>	Ecuador: Napo; Parque Nacional Yasuni	F40274/ROM106020	—	HQ671576	HQ671615	HQ671597
<i>Promops centralis</i>	Peru: Cusco; La Convencion	TK70486/MUSM13866	HQ671552	—	—	—
<i>Sauromys</i>						
<i>Sauromys petrophilus</i>	South Africa: Transvaal Province	SP7790/CM105757	—	—	HQ671621	—
<i>Sauromys petrophilus</i>	South Africa: Transvaal Province	SP7791/CM105758	HQ671553	—	—	HQ671598
<i>Tadarida</i>						
<i>Tadarida aegyptiaca</i>	Iran: Baluchestan; Pir Sohrab	PB1683/NMP48400	—	—	HQ671622	HQ671600
<i>Tadarida brasiliensis</i>	Argentina: Catamarca; Departamento Poman	OCGR1752/OMNH32786	—	—	HQ671623	—
<i>Tadarida brasiliensis</i>	Argentina: Tucuman; Departamento Yerba Buena	OCGR1848/OMNH23758	HQ671554	HQ671578	—	HQ671599
<i>Tadarida fulminans</i>	Madagascar: Province de Fianarantsoa	SMG10997/FMNH166074	HQ671555	HQ671577	—	HQ671601
<i>Tadarida teniotis</i>	Libya: Cyrenaica; Wadi Damah	PB2126/NMP49881	HQ671556	—	—	—
<i>Tadarida teniotis</i>	Iran: Zagros Mountains	PB1742/NMP48458	—	—	—	HQ671602
<i>Outgroups</i>						
<i>Myotis velifer</i>	USA: Texas: Brewster County	ASK6272/ASNHC13276	HQ671558	HQ671579	HQ671626	HQ671604
<i>Myotis yumanensis</i>	USA: Texas: Terrell County	ASK6005/ASNHC11584	HQ671557	HQ671580	HQ671625	HQ671605
<i>Antrozous pallidus</i>	USA: Texas: Brewster County	ASK6244/ASNHC11504	HQ671559	—	—	HQ671603

^a Institutional acronyms: Angelo State University Natural History Collection, San Angelo, Texas (ASNHC); Carnegie Museum, Pittsburgh, Pennsylvania (CM); Durban Natural Science Museum, Durban, South Africa (DNSM); Field Museum, Chicago, Illinois (FMNH); University of Kansas Natural History Museum, Lawrence, Kansas (KU); Louisiana State University Museum of Zoology, Baton Rouge, Louisiana (LSUMZ); Museum of Natural History, San Marcos University, Lima, Peru (MUSM); Museum of Vertebrate Zoology, University of California, Berkeley, California (MVZ); National Museum of Prague, Prague, Czech Republic (NMP); Sam Noble Oklahoma Museum of Natural History, University of Oklahoma, Norman, Oklahoma (OMNH); Royal Ontario Museum, Toronto, Ontario, Canada (ROM); Natural Science Research Laboratory, Texas Tech University, Lubbock, Texas (TTU); The Museum of Zoology, Pontificia Universidad Católica del Ecuador, Quito, Ecuador (QCAZ); Universiti Malaysia Sarawak, Sarawak, Malaysia (UNIMAS); National Museum of Natural History, Smithsonian Institution, Washington, D.C. (USNM).

^b These specimens were sequenced from wing punches only.