



## **Description of *Dryinus laotianus* (Hymenoptera: Dryinidae), a New Species from Laos**

Authors: Olmi, Massimo, Xu, Zaifu, and Guglielmino, Adalgisa

Source: Florida Entomologist, 98(2) : 560-562

Published By: Florida Entomological Society

URL: <https://doi.org/10.1653/024.098.0225>

---

BioOne Complete ([complete.BioOne.org](https://complete.BioOne.org)) is a full-text database of 200 subscribed and open-access titles in the biological, ecological, and environmental sciences published by nonprofit societies, associations, museums, institutions, and presses.

Your use of this PDF, the BioOne Complete website, and all posted and associated content indicates your acceptance of BioOne's Terms of Use, available at [www.bioone.org/terms-of-use](https://www.bioone.org/terms-of-use).

Usage of BioOne Complete content is strictly limited to personal, educational, and non - commercial use. Commercial inquiries or rights and permissions requests should be directed to the individual publisher as copyright holder.

---

BioOne sees sustainable scholarly publishing as an inherently collaborative enterprise connecting authors, nonprofit publishers, academic institutions, research libraries, and research funders in the common goal of maximizing access to critical research.

# Description of *Dryinus laotianus* (Hymenoptera: Dryinidae), a new species from Laos

Massimo Olmi<sup>1,\*</sup>, Zaifu Xu<sup>2</sup>, and Adalgisa Guglielmino<sup>3</sup>

## Abstract

*Dryinus laotianus* sp. nov. is described from Hua Phan Province (Laos). *Dryinus laotianus* can be distinguished from the related Oriental species *D. mansus* Olmi and *D. stantoni* Ashmead by the different sculpture of the scutum (punctate and unsculptured among punctures in *D. laotianus*; granulated or partly reticulate rugose in *D. stantoni*; completely reticulate rugose in *D. mansus*).

Key Words: taxonomy, Hua Phan Province, Oriental Region, Chrysoidea

## Resumen

Se describe la nueva especie *Dryinus laotianus*, obtenida en la provincia de Hua Phan (Laos). *D. laotianus* puede ser diferenciada de las especies orientales más cercanas (*D. mansus* Olmi y *D. stantoni* Ashmead) por la escultura diferente en el escudo (puntuada pero sin escultura entre las puntuaciones en *D. laotianus*; granulada o bien en parte rugosa en *D. stantoni*; completamente rugosa en *D. mansus*).

Palabras Clave: Taxonomía, Provincia de Hua Phan, región Oriental, Chrysoidea

Translation provided by the authors.

Dryinidae (Hymenoptera: Chrysoidea) are parasitoids of Hemiptera Auchenorrhyncha. The biology of this small group of wasps is still poorly known (Guglielmino & Bückle 2003, 2010; Guglielmino et al. 2006; Guglielmino & Virla 1998).

The genus *Dryinus* Latreille 1804 is present in all zoogeographical regions. About 293 species have been described from all continents (Guglielmino & Olmi 2013, 2014; Olmi et al. 2011; Olmi & Guglielmino 2011; Olmi & Virla 2014).

The genus was revised at first at world level by Olmi (1984, 1991), more recently by Xu et al. (2013) for the Oriental region and by Olmi & Virla (2014) for the Neotropics. Forty seven species of *Dryinus* are known from the Oriental region (Xu et al. 2013). In 2014, we examined additional specimens of *Dryinus* from Laos and found the new species described herein.

## Materials and Methods

The descriptions follow the terminology used by Olmi (1984), Olmi & Guglielmino (2010) and Xu et al. (2013). The measurements reported are relative, except for the total length (head to abdominal tip, without the antennae), which is expressed in millimeters. In the descriptions, POL is the distance between the inner edges of the 2 lateral ocelli; OL is the distance between the inner edges of a lateral ocellus and the median ocellus; OOL is the distance from the outer edge of a lateral ocellus to the compound eye; OPL is the distance from the posterior edge of a lateral ocellus to the occipital carina; and TL is the distance from the posterior edge of an eye to the occipital carina. The material

studied in this paper is deposited in the collection of the Oberösterreichisches Landesmuseum, Linz, Austria (OLL).

## Results

*Dryinus laotianus* sp. nov. (Figs. 1 and 2)

### Description

Holotype female. Fully winged. Length 6.0 mm. Head black, except mandible, clypeus, gena, face near clypeus and shortly along orbits, ventral side of head around mouth ferruginous; antenna testaceous; mesosoma black, except lateral margins and posterior collar of pronotum testaceous; metasoma brown; legs testaceous, except distal extremities of tibiae darkened, part of metacoxa and outer side of club

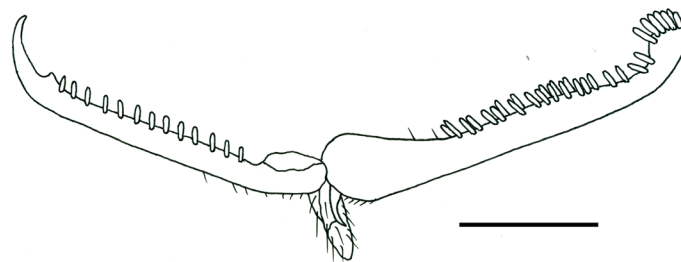


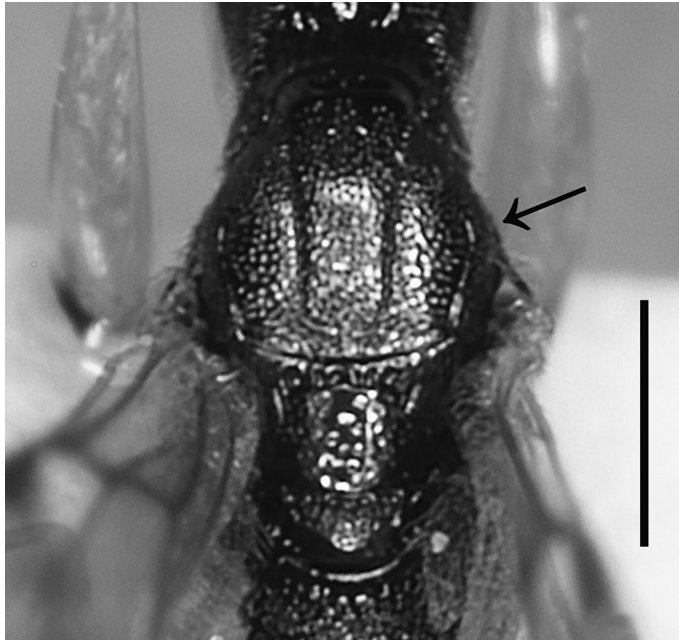
Fig. 1. Chela of holotype of *Dryinus laotianus* sp. nov. Scale bar 0.24 mm.

<sup>1</sup>Tropical Entomology Research Center, Via De Gasperi 10, Viterbo, 01100 Italy

<sup>2</sup>Department of Entomology, South China Agricultural University, Guangzhou, Guangdong 510640, P. R. China

<sup>3</sup>Department of Agriculture, Forests, Nature and Energy, University of Tuscia, Viterbo, 01100 Italy

\*Corresponding author; E-mail: olmi@unitus.it



**Fig. 2.** Part of mesosoma of holotype of *Dryinus laotianus* sp. nov. (scutum indicated by an arrow). Scale bar 0.56 mm.

of metafemur brown. Antenna clavate; antennal segments in following proportions: 10:6:50:27:22:10:8:7:6:9; rhinaria present on segments 5–10. Head slightly swollen, shiny, strongly punctate and sculptured by irregular striae; frontal line complete; occipital carina complete; POL = 3; OL = 4; OOL = 8; OPL = 2; TL = 8; greatest breadth of posterior ocelli about as long as POL. Pronotum shiny, punctate, unsculptured among punctures, with some longitudinal keels on lateral regions and posterior transverse furrow, crossed by two transverse impressions, anterior impression very weak and posterior one strong; disc humped; posterior collar short; pronotal tubercle not reaching tegula. Scutum (Fig. 2) shiny, punctate, unsculptured among punctures, strongly punctate near posterior margin. Notauli incomplete, reaching about 0.9 length

- 27. Scutum punctate, unsculptured among punctures (Fig. 2) . . . . . *D. laotianus* sp. nov.
- Scutum granulated or completely or partly reticulate rugose . . . . . 27'
- 27'. Scutum completely granulated, or at most with posterior surface reticulate rugose . . . . . *D. stantoni* Ashmead
- Scutum completely reticulate rugose . . . . . *D. mansus* Olmi

**Acknowledgments**

Many thanks to Dr. Martin Schwarz (OLL) for the loan of the specimen studied in the present paper. This paper was supported by the National Basic Research Program of China (No. 2013CB127600).

**References Cited**

Ashmead WH. 1904. Descriptions of new genera and species of Hymenoptera from the Philippine Islands. *Proceedings of the United States National Museum* 28: 127-158.  
 Guglielmino A, Bückle C. 2003. Description of larval instars of *Neodryinus typhlocybae* (Ashmead, 1893) (Hymenoptera Dryinidae), with remarks on its biology. *Mitteilungen aus dem Museum für Naturkunde in Berlin - Deutsche Entomologische Zeitschrift* 50: 143-150.  
 Guglielmino A, Bückle C. 2010. Description of larval instars of *Myistrophorus formicaeformis* Ruthe (Hymenoptera: Dryinidae). *Zootaxa* 2602: 57-66.

of scutum. Scutellum and metanotum shiny, punctate, unsculptured among punctures. Metapleura dull, rugose. Propodeum dull, reticulate rugose, without longitudinal keels on posterior surface; dorsal surface more than twice as long as posterior surface (35:15). Fore wing with two dark transverse bands; distal part of stigmal vein longer than proximal part (23:7). Protarsal segments in following proportions: 28:3:7:22:32. Segment 3 of protarsus produced into hook. Enlarged claw (Fig. 1) with one strong subapical tooth and one row of 13 lamellae. Segment 5 of protarsus (Fig. 1) with two rows of 23 lamellae; distal apex with about 19 lamellae. Tibial spurs 1/1/2. Male: Unknown.

**Type material**

HOLOTYPE 1 female, LAOS: Hua Phan Province, Phou Pan, Ban Saleui, 20° 13' 30" N 103° 59' 26" E, 1350–1900 m, 28.VI.2013, C. Holzschuh and locals (OLL).

**Etymology**

The specific name derives from Laos.

**Remarks**

The characters distinguishing the new species are the following: head and mesosoma partly black or brown; antennal segments 4–5 not broader than other segments; posterior ocelli not touching occipital carina; pronotum partly black, humped, with distinct posterior collar; scutum punctate, unsculptured among punctures; metapleuron without shiny and unsculptured area; dorsal surface of propodeum more than twice as long as posterior surface; segment 1 of protarsus slightly longer than segment 4. *D. laotianus* is close to *D. stantoni* Ashmead 1904 and *D. mansus* Olmi 1992. The main differences among these three species regards the sculpture of the scutum (punctate and unsculptured among punctures in *D. laotianus*; completely reticulate rugose in *D. mansus*; granulated and occasionally with posterior surface reticulate rugose in *D. stantoni*). Following the description of *D. laotianus*, the key to the females of the Oriental species of *Dryinus* published by Xu et al. (2013) can be modified by replacing couplet 27 as follows:

Guglielmino A, Bückle C, Moya-Raygoza G. 2006. Description of the larval instars of *Gonatopus bartletti* Olmi, 1984 (Hymenoptera: Dryinidae). *Zootaxa* 1226: 51-60.  
 Guglielmino A, Olmi M, Bückle C. 2013. An updated host-parasite catalogue of world Dryinidae (Hymenoptera: Chrysidoidea). *Zootaxa* 3740: 1-113.  
 Guglielmino A, Olmi M. 2013. Revision of the extant Nearctic species of *Dryinus* Latreille 1804 group 1 (Hymenoptera: Dryinidae), with description of a new species from the USA. *Zootaxa* 3691 (5): 577-590.  
 Guglielmino A, Olmi M. 2014. Description of a new species of *Dryinus* Latreille from Madagascar. *Journal of the Kansas Entomological Society* 87: 265-268.  
 Guglielmino A, Virla EG. 1998. Postembryonic development of *Gonatopus lunatus* Klug (Hymenoptera: Dryinidae: Gonatopodinae), with remarks on its biology. *Annales de la Société entomologique de France* (N. S.) 34: 321-333.  
 Latreille PA. 1804. *Nouvelle Dictionnaire d'Histoire Naturelle*, 24. F. Dufart, Paris, France.  
 Olmi M. 1984. A revision of the Dryinidae (Hymenoptera). *Memoirs of the American Entomological Institute* 37: 1-1913.  
 Olmi M. 1991. Supplement to the revision of the world Dryinidae (Hymenoptera Chrysidoidea). *Frustula entomologica* (1989)(N. S.) 12: 109-395.

- Olmi M. 1992. New Dryinidae from Sulawesi and Taiwan (Hymenoptera: Chrysidoidea). *Oriental Insects* 26: 185-194.
- Olmi M, Guglielmino A. 2010. Description of *Erwiniinae*, new subfamily of Dryinidae from Ecuador (Hymenoptera: Chrysidoidea). *Zootaxa* 2605: 56-62.
- Olmi M, Guglielmino A. 2011. Revision of fossil species of *Dryinus* belonging to *lamellatus* group, with description of a new species (Hymenoptera, Dryinidae). *ZooKeys* 130: 505-514.
- Olmi M, Guglielmino A, Vollaro M. 2011. Revision of fossil species of *Dryinus* belonging to *constans* group, with description of a new species (Hymenoptera: Dryinidae). *Zootaxa* 2981: 43-55.
- Olmi M, Virla EG. 2014. Dryinidae of the Neotropical Region (Hymenoptera: Chrysidoidea). *Zootaxa* 3792 (1): 1-534.
- Xu Z, Olmi M, He J. 2013. Dryinidae of the Oriental region (Hymenoptera: Chrysidoidea). *Zootaxa* 3614 (1): 1-460.