

Do cytochrome c oxidase 1 Gene Sequences Differentiate Species of Spirostreptid Millipedes (Diplopoda: Spirostreptida: Spirostreptidae)?

Authors: Mwabvu, T., Lamb, J., Slotow, R., Hamer, M., and Barraclough, D.

Source: African Invertebrates, 56(3) : 651-661

Published By: KwaZulu-Natal Museum

URL: <https://doi.org/10.5733/afin.056.0311>

BioOne Complete (complete.BioOne.org) is a full-text database of 200 subscribed and open-access titles in the biological, ecological, and environmental sciences published by nonprofit societies, associations, museums, institutions, and presses.

Your use of this PDF, the BioOne Complete website, and all posted and associated content indicates your acceptance of BioOne's Terms of Use, available at www.bioone.org/terms-of-use.

Usage of BioOne Complete content is strictly limited to personal, educational, and non - commercial use. Commercial inquiries or rights and permissions requests should be directed to the individual publisher as copyright holder.

BioOne sees sustainable scholarly publishing as an inherently collaborative enterprise connecting authors, nonprofit publishers, academic institutions, research libraries, and research funders in the common goal of maximizing access to critical research.

Do *cytochrome c oxidase 1* gene sequences differentiate species of spirostreptid millipedes (Diplopoda: Spirostreptida: Spirostreptidae)?

T. Mwabvu^{1*}, J. Lamb¹, R. Slotow¹, M. Hamer^{1,2} and D. Barraclough¹

¹School of Life Sciences, University of KwaZulu-Natal, Westville Campus, P. Bag X54001, Durban 4000, South Africa;

²South African National Biodiversity Institute, P. Bag X101, Pretoria 0001, South Africa;

*Corresponding author: mwabvut@ukzn.ac.za

ABSTRACT

The aim of this study was to use *cytochrome c oxidase 1* (CO1) sequences to recover a phylogeny for seven morphologically described spirostreptid millipede taxa from southern Africa, and to evaluate the correspondence between morphological and molecular phylogenies. Genetic p-distance generally increased with taxonomic divergence: inter-specific mean 15.33% (14.09%–17.02%), inter-generic mean 18.43% (6.83%–26.81%) and inter-order mean 24.16% (range 18.56%–30.77%). Congruent Bayesian, maximum parsimony and neighbour-joining analyses of 520 nucleotides of the CO1 gene resolved the orders Spirostreptida, Julida and Callipodida. Members of genera within the Spirostreptidae (*Archispirostreptus*, *Bicoidens*, *Cacuminostreptus*, *Doratogonus*, *Orthoporoides*, *Plagiotaphrus* and *Spirostreptus*) formed a single clade within which a sample of *Thyropygus* (family Harpagophoridae) was paraphyletically nested. Phylogenetic analyses failed to recover support for the genera *Doratogonus*, *Bicoidens*, *Archispirostreptus* and *Spirostreptus*, as representatives of these genera were not monophyletic. Samples morphologically identified as the same species (*Bicoidens flavicollis*) were part of two different clades, one of which was well supported and otherwise contained members of *Doratogonus*. This high level of divergence (mean 12.64%) between morphologically identified spirostreptid millipede sister species could indicate that changes in genital morphology occur rather slowly relative to CO1 sequence substitution, and may underestimate species diversity.

KEY WORDS: Spirostreptidae, taxonomy, millipedes, genetic divergence, phylogeny, *cytochrome c oxidase 1*.

INTRODUCTION

Millipedes are a major group of soil detritivores. About 15% of the estimated 80 000 species have been described (Sierwald & Bond 2007). In Africa, the orders Spirostreptida, Polydesmida, Polyzoniida, Siphonophorida, Sphaerotheriida, Spirobolida and Stemmiulida have been recorded (Sierwald & Bond 2007). According to Hamer (2000) the Spirostreptida is the most common and conspicuous. The Spirostreptidae is one of four families in the Spirostreptida. Of approximately 45 African genera that belong to the Spirostreptidae (Krabbe 1982), 23 occur in southern Africa, south of the Kunene and Zambezi rivers (Hamer 2000). Among them are the genera *Archispirostreptus* Silvestri, 1895, *Doratogonus* Attems, 1914, *Cacuminostreptus* Mwabvu, 2010, *Spirostreptus* Brandt, 1833, *Plagiotaphrus* Attems, 1914, and *Bicoidens* Attems, 1928, which contain large-bodied species.

Although male genitalia are central in spirostreptid millipede taxonomy (see Hoffman 2008; Hamer 2009; Mwabvu *et al.* 2010) because they are divergent and species specific (Bond *et al.* 2003), morphology-based classifications may be too inclusive (Adams *et al.* 2009; Ács *et al.* 2010) and may hide considerable variation. Molecular data have demonstrated in many arthropod groups that molecular divergence may not reflect divergence in morphology, thus resulting in an underestimation of diversity (Brewer *et al.* 2012). Derkarabetian *et al.* (2011) also reported a lack of divergence in reproductive

morphology in Opiliones, although genetic divergence is significant. Other studies, for example, in *Anadenobolus* millipedes (Bond *et al.* 2003) and spiders (Huber *et al.* 2005), also suggest that genetic and genitalic divergence are decoupled. Hence, groups that were described on the basis of morphological characters are being re-evaluated using appropriately variable DNA sequence data.

The use of DNA sequences to distinguish taxa, identify new species and estimate phylogeny is becoming prominent in invertebrate systematics (Hebert *et al.* 2004), including arthropods (Brewer *et al.* 2013). For example, mitochondrial *cytochrome c oxidase 1* (CO1) gene sequences have been used to differentiate species in pelagic sea snails (Hunt *et al.* 2010), crustaceans (Witt *et al.* 2006), lepidopterans of North America (Hebert *et al.* 2010), tropical butterflies (Elias *et al.* 2007; Escalante *et al.* 2010) and arachnids (Boyer *et al.* 2005). Furthermore, mitochondrial 16S rRNA gene sequences have also been used to discriminate members of the orders Polydesmida (Marek & Bond 2007), Spirobolida (Bond & Sierwald 2002), Glomerida (Wesener 2012) and Julida (Enghoff *et al.* 2011, 2013). Moreover, most of the centipede and millipede faunas of Bavaria, southern Germany (120+ species representing all major orders and families) have been subjected to molecular analysis, including barcoding and genetic distance assessments (Spelda *et al.* 2011). However, inter-generic genetic variations and the thresholds for designating species remain only scarcely touched upon despite, according to Enghoff *et al.* (2011), molecular data demonstrating that they could resolve inter-generic relationships in millipedes.

DNA sequence data could clarify the validity of species, flag undescribed taxa and augment taxonomy based on male genitalia. Given the poor dispersal abilities of the Diplopoda and their preference for moist micro-habitats, which are patchy, they tend to be local endemics, i.e. geographically isolated in small areas (Hopkin & Read 1992). As such, we expect strong inter-generic and inter-specific genetic differentiation among millipedes.

The aim of this study was to carry out a phylogenetic analysis based on mitochondrial CO1 sequences for seven taxa, morphologically determined to be members of the family Spirostreptidae, and outgroups. The objectives were as follows: (1) to assess the CO1 genetic distance thresholds characterising a range of taxonomic levels (intra-specific to inter-order) within the order Spirostreptida, and between the orders Spirostreptida, Julida and Callipodida within the Helminthomorpha; (2) to assess whether morphology-based taxonomic groups within the Spirostreptidae, comprising members of the genera *Archispirostreptus*, *Bicoidens*, *Cacuminostreptus*, *Doratogonus*, *Orthoporoides*, *Plagiotaphrus* and *Spirostreptus*, are supported by molecular data; and (3) to assess whether the family Spirostreptidae (represented by the above genera) is monophyletic.

MATERIAL AND METHODS

Total genomic DNA was extracted from males. Fresh specimens of *B. flavicollis* Attems, 1928, *B. aridis* Mwabvu, 2009, *S. kruegeri* (Attems, 1928), *S. sebae* Brandt, 1833, *D. uncinatus* (Attems, 1914), *Doratogonus* sp. 1, *A. tumuliporus* (Karsch, 1881), *A. gigas* (Peters, 1855), *P. sulcifer* Attems, 1914 and *C. mazowensis* Mwabvu, 2010 were collected in Zimbabwe; and *S. kruegeri*, *D. cristulatus* (Porat, 1872) and *O. pyrrocephalus* (Lock, 1865) were taken from South Africa. All specimens were collected by hand, after which the material was preserved in 100% ethanol. Specimens that were

collected from South Africa are housed in the KwaZulu-Natal Museum, Pietermaritzburg, South Africa, and those from Zimbabwe are in the Natural History Museum, Bulawayo, Zimbabwe. Specimens of *A. gigas* (Peters, 1855) were borrowed from the Royal Museum for Central Africa, Tervuren, Belgium.

Legs removed from the midbody rings of individual specimens were ground using a mortar and pestle. DNA was then extracted following the manufacturer's instructions using the Qiagen DNeasy Blood and Tissue Kit (Qiagen). Polymerase chain reactions targeting part of the mitochondrial CO1 gene were performed after optimisation using gradient PCR. PCR amplifications were performed in a total volume of 25 µl containing 12.5 µl EconoTaq plus green mastermix, 0.25 µl of each primer, 1 µl of DNA and 11 µl of H₂O. The thermal cycling conditions were 94°C for 2 min, 35 cycles of 94°C for 30 s, annealing at 50°C for 30 s, extension at 72°C for 1 min and a final extension of 72°C for 10 min. Primers for the amplification were as used by Lavrov *et al.* (2002) and Bond and Sierwald (2002). As PCR yields were low, amplicons were cloned prior to sequencing on an ABI 3730 capillary sequencer at Inqaba Biotechnical Industries (Pty) Ltd (Hatfield, Pretoria, South Africa).

Raw sequences were edited in BioEdit version 7 (Hall 1999), and aligned using the Clustal W algorithm in BioEdit, and by inspection. The CO1 alignments were trimmed to a common length of 520 nucleotides. A saturation plot of transitions and transversions versus genetic distance, and Xia's test of substitution saturation (Xia *et al.* 2003; Xia & Lemey 2009) were carried out in DAMBE (Xia & Xie 2001) to evaluate the level of saturation and establish the usefulness of the dataset as an indicator of phylogeny.

Phylogenetic relationships among the taxa were analysed using Bayesian, maximum parsimony and neighbour-joining analyses. Modeltest (Posada & Crandall 1998) was used to select the model of nucleotide substitution which best fitted the sequence dataset. The general time-reversible (GTR) model was selected using the Akaike Information Criterion (AIC), and was used in Bayesian, neighbour-joining and data-saturation analyses. Neighbour-joining and maximum parsimony analyses were implemented in PAUP (Swofford 2002). Genetic distances were presented as distance matrices and as a neighbour-joining tree, which was bootstrapped using 1000 pseudo-replicates. For parsimony analysis, the random additions sequence option (n=100) for discrete, unordered characters was used. The shortest tree was obtained using the heuristic search option under the tree bisection-reconnection (TBR) branch-swapping option. The degree of support for each node of the resulting tree was estimated using bootstrap re-sampling analysis (1000 pseudo-replicates; Felsenstein 1985). Bayesian analysis was implemented in Mr Bayes 3.0 (Huelsenbeck & Ronquist 2001) using flat priors. For all analyses, four Markov chains were run for 5 million generations each, until the standard deviation of the split frequencies was less than 0.01. The first 500 000 trees were discarded as burn-in. A preliminary run was carried out in order to determine that the burn-in value was sufficiently high to discard all less likely trees generated before the likelihoods had stabilised. Using the methods described above, we also created a tree based on amino-acid sequences, to see if deep node support was greater than in the tree based on nucleotide sequences.

Nucleotide sequence data were submitted to GenBank. The GenBank accession numbers are KF219542 (*A. gigas*), KF219543 (*A. tumuliporus* 1), KF219544 (*A. tumuliporus* 2), KF219545 (*B. aridis*), KF219546 (*B. flavicollis* 1), KF219547 (*B. flavicollis* 2), KF219548

TABLE 1

Taxa used for phylogenetic analysis, collection information, museum voucher and GenBank accession numbers. NMSA or NM or NM-Myr – KwaZulu-Natal Museum, Pietermaritzburg, South Africa; NMZ – Natural History Museum, Bulawayo, Zimbabwe; MRAC – Royal Museum of Central Africa, Belgium.

Taxon	Museum Voucher	Collection Site	GenBank Accession
<i>Bicoidens flavicollis</i> 1	NM 21963	Muterere, Honde Valley, Zimbabwe	KF219546
<i>Bicoidens flavicollis</i> 2	NM 21958	Mazowe, Zimbabwe	KF219547
<i>B. aridis</i>	NMZ/D156	Zambezi Valley, Zimbabwe	KF219545
<i>Spirostreptus kruegeri</i>	NM 25882	Limpopo, South Africa	KF219556
<i>S. sebae</i>	NMSA 22048	Lusaka, Zambia	KF219557
<i>Doratogonus uncinatus</i>	NM 21971	Muterere, Honde Valley, Zimbabwe	KF219551
<i>D. cristulatus</i>	NM-Myr 25847	Pigeon Valley, Durban, South Africa	KF219549
<i>Doratogonus</i> sp. 1	NM 21942	Muterere, Honde Valley, Zimbabwe	KF219550
<i>Archispirostreptus tumuliporus</i>	NM 20480	Chawarura School, Muzarabani, Zimbabwe	KF219543
<i>A. gigas</i>	MRAC 20764	Taita Hills, Kenya	KF219542
<i>Plagiotaphrus sulcifer</i>	NMSA 20486	Mahuwe, Guruve, Zimbabwe	KF219555
<i>Cacuminostreptus mazowensis</i>	NM 21944	Highlands, Harare, Zimbabwe	KF219548
<i>Orthoporoides pyrrocephalus</i>	NM-Myr 25849	Pigeon Valley, Durban, South Africa	KF219553

(*C. mazowensis*), KF219549 (*D. cristulatus* 1), KF219550 (*Doratogonus* sp. 1), KF219551 (*D. uncinatus*), KF219552 (*D. cristulatus* 2), KF219553 (*O. pyrrocephalus*), KF219554 (*P. sulcifer* 1), KF219555 (*P. sulcifer* 2), KF219556 (*S. kruegeri*), and KF219557 (*S. sebae*) (Table 1). Outgroup sequences of taxa belonging to the Orders Callipodida, Julida, and Spirostreptida (Harpagophoridae: *Thyropygus* sp.) were obtained from the National Center for Biotechnology Information (NCBI) GenBank database.

RESULTS

The results of Xia's test of substitution saturation (Xia *et al.* 2003; Xia & Lemey 2009) showed that ISS (0.3219) was significantly less than ISSC (0.7166) ($p=0.0000$), consistent with little saturation in the data and indicating that it is useful for phylogenetics. The saturation plot (Fig. 2) showed no saturation in transversions and some saturation in transitions at GTR genetic distances greater than 17%.

In order to enable comparisons to be made with genetic distances reported in the literature, we report genetic distances among different taxonomic levels as p-distances. Genetic p-distances within the Spirostredptidae were: inter-specific mean 15.33% (range 14.09%–17.02%); and inter-generic mean 18.43% (6.83%–26.81%) (Table 2, Fig. 1). The mean genetic distance between the orders Spirostreptida, Julida and Calli-

TABLE 2

Pairwise genetic p-distances (%) between spirostreptid species and outgroups based on analysis of 520 nucleotides of the mitochondrial *cytochrome c oxidase 1* gene. Abbreviations: Ag – *A. gigas*, At – *A. tumuliporus*, Ba – *B. aridis*, BfA – *B. flavicollis* A, BfC – *B. flavicollis* C, Dc – *D. cristulatus*, D – *Doratogonus* sp. 1, Du – *D. uncinatus*, Op – *O. pyrrocephalus*, Ps – *P. sulcifer*, Sk – *S. kruegeri*, Ss – *S. sebae*, Cm – *C. mazowensis*, Th – *Thyropygus* sp., Ju – Julida, Ca – Callipodida.

	Ag	At	Ba	BfA	BfC	Dc	DI	Du	Op	Ps	Sk	Ss	Cm	Th	Ju
Ag	-														
At	17.03	-													
Ba	18.77	15.85	-												
BfA	17.54	16.80	15.20	-											
BfC	16.63	15.89	14.09	16.22	-										
Dc	19.28	17.30	14.20	11.68	16.30	-									
DI	19.01	17.65	16.44	6.84	17.06	9.66	-								
Du	23.29	19.87	20.47	12.00	22.41	14.72	9.42	-							
Op	19.30	16.60	16.37	18.27	18.15	14.06	17.19	20.84	-						
Ps	18.95	17.60	17.38	21.77	20.31	18.06	21.33	24.00	18.11	-					
Sk	14.68	15.34	16.86	14.51	16.12	14.74	14.93	18.18	14.12	18.99	-				
Ss	18.91	15.83	17.93	17.12	19.11	18.22	17.19	21.68	17.88	19.85	14.12	-			
Cm	24.43	23.08	23.85	25.79	22.73	23.64	23.85	25.98	24.43	26.82	20.81	22.62	-		
Th	14.42	16.02	16.18	16.73	18.53	16.44	17.19	20.84	16.54	18.30	15.09	16.73	23.08	-	
Ju	24.56	23.55	25.15	25.00	25.10	23.76	25.20	28.42	25.00	27.36	23.98	25.58	27.60	25.96	-
Ca	23.00	24.90	25.54	22.50	23.55	22.97	22.85	26.11	24.23	26.20	22.82	26.15	28.51	23.08	23.65

podida was 24.16% (18.56%–30.77%). In general, genetic distance increased with taxonomic divergence.

Bayesian inference (BI), maximum parsimony (MP) and neighbour-joining (NJ) analyses of the CO1 nucleotide alignment produced congruent trees. These trees were also congruent with the trees based on amino acid sequences, which are not presented here. The Bayesian tree is presented, with bootstrap values from all three analysis methods indicated at the nodes, in the order (BI posterior probability/ MP bootstrap % /NJ bootstrap %) (Fig. 3). Members of the three orders formed monophyletic clades; the Spirostreptida (Clade A; 1.00/80%/89%) and Julida (Clade B; 1.00/88%/92%) were strongly supported, and the Callipodida relatively weakly supported (Clade C; 0.96/81%/52%). Within clade A, duplicate representatives of *D. cristulatus*, *A. tumuliporus* and *P. sulcifer* formed very strongly supported clades (1.00/100%/100%). A single member of the Harpagophoridae, a *Thyropygus* species, was nested within the strongly supported clade (A) containing all representatives of the Spirostreptidae and showed a very weakly supported (0.85/51%/68%) relationship with *Archispirostreptus gigas*. Members of the genus *Archispirostreptus* (*tumuliporus* and *gigas*) did not form a monophyletic clade, as would be expected. Although all members of *Doratogonus* (*cristulatus*, *uncinatus* and sp. 1) were part of the same well-supported clade (A1), a representative of *Bicoxidens flavicollis* was also nested within this clade. Although there

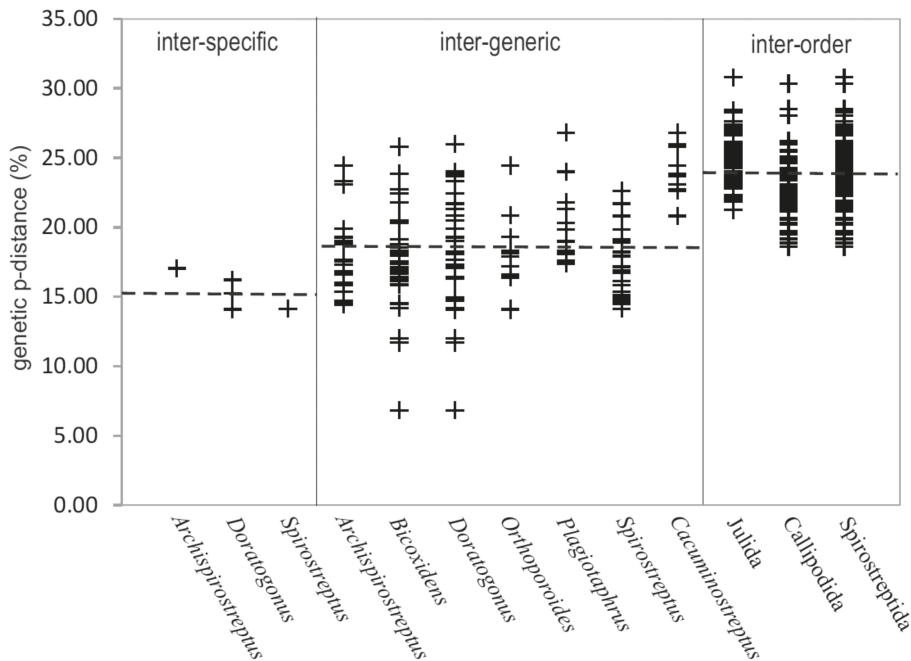


Fig. 1. Summary of intra-specific, inter-specific and inter-generic genetic distances within representatives of the family Spirostreptidae and between members of the orders Spirostreptida, Julida and Callipodida. The dotted line represents the mean value of a category.

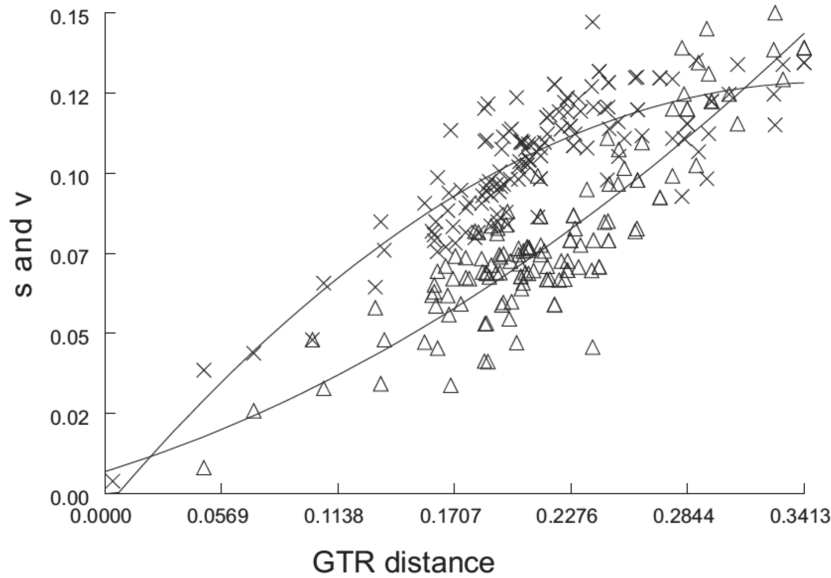


Fig. 2. Saturation plot of a dataset comprising 520 nucleotides of the mitochondrial *cytochrome c oxidase 1* gene created in DAMBE (Xia & Xie 2001). The GTR model was used to calculate genetic distance in substitutions per site; s – transition, v – transversion.

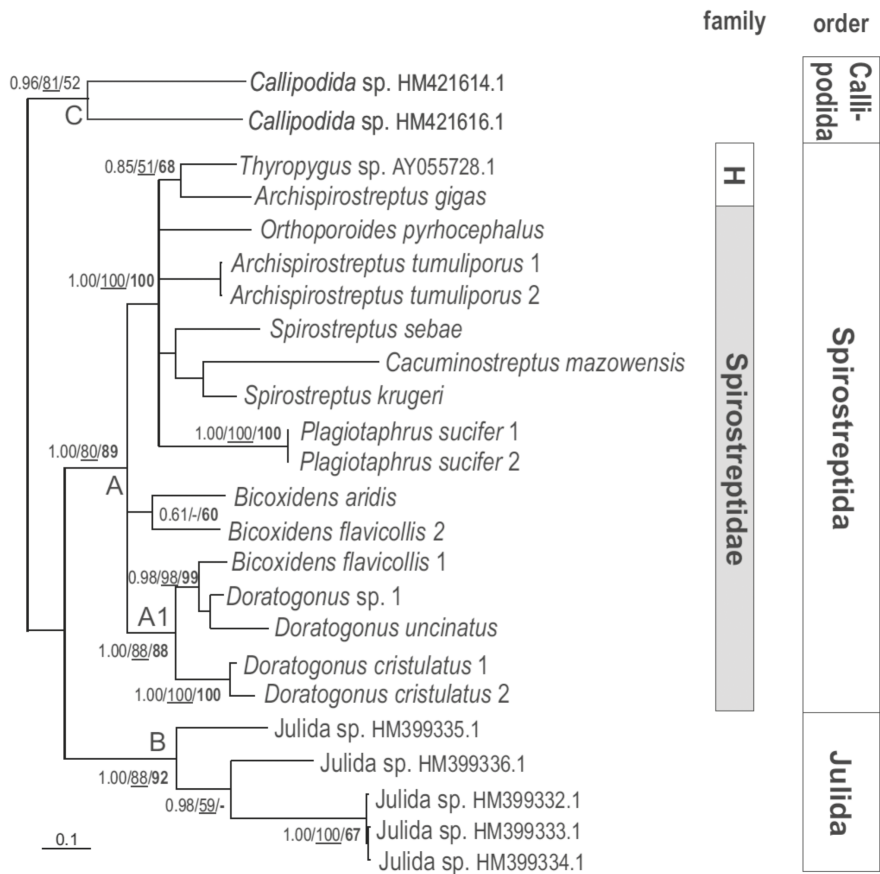


Fig. 3. Bayesian inference tree based on an analysis of 520 nucleotides of the mitochondrial *cytochrome c oxidase 1* gene showing relationships between Spirostreptida species and outgroups (Julida and Callipodida species). Numbers adjacent to taxon names are GenBank accession numbers, and indicate sequences that were downloaded from the NCBI Genbank. This tree was congruent in structure with maximum parsimony and neighbour-joining analyses of the same dataset. Nodal support values are indicated as (posterior probability / maximum parsimony bootstrap / neighbour-joining bootstrap).

was very weak support (0.61/-/60%) for an association between *Bicoxidens aridis* and a representative of *B. flavicollis*, not all representatives of this genus were part of the same clade. Further, although members of the genus *Spirostreptus* (*sebae* and *krugeri*) were part of the same unsupported clade, this also included a representative of *Cacuminostreptus mazowensis*.

DISCUSSION

The overall aim of this study was to use CO1 sequences to recover a phylogeny for seven spirostreptid millipede taxa from southern Africa whose taxonomic position had previously been determined by morphological analyses, and to compare the relationships revealed by morphological and molecular methods. The CO1 gene is generally regarded as sufficiently divergent to allow identification and discovery of new species in a variety

of taxa, including beetles (Funk 1999), neotropical skipper butterflies (Hebert *et al.* 2004) and amphibians (Vences *et al.* 2005). As there is little phylogenetic information available for spirostreptid millipedes, we aimed to evaluate the threshold genetic distances distinguishing different taxonomic levels. We found that genetic distance between taxa generally increased with taxonomic divergence, as would be expected based on a molecular clock hypothesis (Zuckerandl & Pauling 1962).

The mean genetic distance between the orders Spirostreptida, Julida and Callipodida was 24.16% (range 18.56%–30.77%). Taxa belonging to the same order clustered together in the CO1 tree, providing support for the validity of these orders according to the phylogenetic species concept (Cracraft 1987). The mean inter-specific distances recovered were very high at 15.33% (14.09%–17.02%) relative to those observed in other types of organisms. For example, 74% of avian sister species are separated by CO1 distances of less than 2.7% (Moritz & Cicero 2004), and 99% of all marine nematode species are separated by >5% (Derycke *et al.* 2010). This high level of divergence between morphologically identified spirostreptid millipede species could indicate that changes in genital morphology occur rather slowly relative to CO1 sequence substitution, and may underestimate species diversity. Phylogenetic analyses failed to recover support for the genera *Archispirostreptus*, *Bicoxidens*, *Doratogonus* and *Spirostreptus*. Representatives of *Archispirostreptus* and *Bicoxidens* respectively did not form monophyletic clades, as would be expected of a genus under the phylogenetic species concept (Cracraft 1987). Although members of the genera *Doratogonus* and *Spirostreptus* were all included in the same clade, both the *Doratogonus* and *Spirostreptus* clades included a member of another genus, and were not therefore monophyletic for members of the genus. Further, samples identified as the same species (*Bicoxidens flavicollis*) were part of two different clades, one of which was well supported and otherwise contained members of *Doratogonus*.

Based on the selected genera (*Archispirostreptus*, *Bicoxidens*, *Cacuminostreptus*, *Doratogonus*, *Orthoporoides*, *Plagiotaphrus*, *Spirostreptus*), the CO1 sequences illustrated that representatives of the family Spirostreptidae are all members of the same clade, although the presence within this clade of a sample of *Thyropygus*, sourced by a Blast search of the Genbank for sequences most similar to the Spirostreptidae study samples, is puzzling. Our phylogenetic analyses yielded a weakly supported sister group relationship between *Thyropygus* sp. and *Archispirostreptus gigas*, although genital morphology-based taxonomy places the two genera in different families, Harpagophoridae and Spirostreptidae, respectively.

At this stage, it is premature to question relationships based on genital morphology because of poor taxon sampling and, according to Sole-Cava and Wörheide (2007), possible identification errors in the Genbank database, because sequences are not from holotypes. *Archispirostreptus gigas* and *A. tumuliporus* do not form a subclade within the Spirostreptidae clade, even though based on gonopod morphology they are congeneric (Mwabvu *et al.* 2010); this was unexpected. Whether *A. gigas* and *A. tumuliporus* belong in different genera requires further scrutiny; possibly these taxonomic assignments are incorrect. At present it is unclear whether genital morphologic variation is correlated with genetic change in millipedes. Hence, there is a need to increase taxon sampling and use more than one gene sequence to assess intra-generic genetic divergence. C values for Diplopoda range from 0.31 pg to 1.4 pg (www.genomesize.com, Animal Genome

Size Database, accessed 29 January 2015). Based on the mean, the fraction of the genome represented by the CO1 alignment analysed in this study is $5.6 \times 10^{-5}\%$. Based on this, it would appear advisable to employ a multi-gene system in molecular taxonomy, although this would not significantly increase the proportion of the genome analysed. In addition, Meier *et al.* (2006) observed that 21 % of dipteran species that they studied did not have unique CO1 sequences, which resulted in low identification success. Thus, in order to establish the degree of genetic divergence in spirostreptid millipedes, wider taxon sampling and the use of more genes to discriminate species are necessary.

Although the genetic distances among species are high, we found little evidence of saturation in the dataset, confirming that these data are suitable for conducting phylogenetic analyses. It is possible that some of the paraphyletic associations observed may be due to long branch attraction artifacts; however, if this were the case, we would expect a discordance in the structure of trees created using the parsimony method, which is most prone to grouping long branches together, and using Bayesian and neighbour-joining analyses. A lack of discordance when different analytical methods are used can be taken as evidence that all are inferring the same true tree (Bergsten 2005). Although it has been suggested that the CO1 locus lacks a phylogenetic signal at deep nodes in millipedes (Brewer *et al.* 2013), we obtained good support for the deep nodes (representing different orders) in our analyses. Our analyses were based on amino-acid sequences, which are more conservative than nucleotide sequences owing to the redundancy in the genetic code, and they revealed no increased nodal support at any level, and produced trees with congruent structures in which the same nodes were supported.

In summary, we found that genetic distance between taxa generally increased with taxonomic divergence. We recovered varying levels of concordance between morphological and CO1 sequence data. The orders Spirostreptida, Julida and Callipodida were completely resolved. Members of the family Spirostreptidae were all part of the same clade, but were not monophyletic, as a member of a sister family, the Harpagophoridae, was nested within this clade. Most genera within the Spirostreptidae were not supported, and were part of paraphyletic associations. Further, samples identified as the same species (*B. flavicollis*) were part of two different clades. This demonstrates that in millipedes, genitalia may be reliable indices of taxon validity at higher taxonomic levels (Order), but that the correlation between morphological and molecular (CO1) data is not unequivocal at family, genus or species level. All species-level taxa were characterised by unique CO1 sequences separated by high genetic distances (mean inter-specific distance 14.1 %), probably because genital morphology underestimates true diversity. We further provide CO1 sequence data for seven species of millipedes within the Spirostreptidae.

ACKNOWLEDGEMENTS

The research was funded by the University of KwaZulu-Natal and the National Research Foundation's Focus Area Grants. We wish to thank Miss Theshnie Naidoo for training the first author in molecular laboratory techniques.

REFERENCES

- ÁCS, Z., CHALLIS, R.J., BIHARI P., BLAXTER, M., HAYWARD, A., MELIKI G., CSÓKA, G., PÉNZES, Z., PUJADE-VILLAR, J., NIEVES-ALDREY, J-L., SCHÖNROGGE, K. & STONE, G.N. 2010. Phylogeny and DNA barcoding of inquiline oak gallwasps (Hymenoptera: Cynipidae) of the Western Palaearctic. *Molecular Phylogenetics and Evolution* **55**: 210–225.

- ADAMS, D.C., BERNIS, C.M., KOZAK, K.H. & WIENS, J.J. 2009. Are rates of species diversification correlated with rates of morphological evolution? *Proceedings of the Royal Society B* **276** (1668): 2729–2738, DOI:10.1098/rspb.2009.0543
- BERGSTEN, J. 2005. A review of long-branch attraction. *Cladistics* **21**: 163–193.
- BOND, J.E., BEAMER, B.A., HEDIN, M.C. & SIERWALD, P. 2003. Gradual evolution of male genitalia in sibling species complex of millipedes (Diplopoda: Spiroboloda: Rhinocricidae: *Anadenobolus*). *Invertebrate Systematics* **17**: 711–717.
- BOND, J.E. & SIERWALD, P. 2002. Cryptic speciation in the *Anadenobolus excisus* millipede species complex on the island of Jamaica. *Evolution* **56** (6): 1123–1135.
- BOYER, S.L., KARAMAN, I. & GIRIBET, G. 2005. The genus *Cyphophthalmus* (Arachnida, Opiliones, Cyphophthalmi) in Europe: a phylogenetic approach to Balkan Peninsula biogeography. *Molecular Phylogenetics & Evolution* **36**: 554–567.
- BREWER, M.S., SPRUILL, C.L., NANDITA, S.R. & BOND, J.E. 2012. Phylogenetics of the millipede genus *Brachycybe* Wood, 1864 (Diplopoda: Platydesmida: Andrognathidae): patterns of deep evolutionary history and recent speciation. *Molecular Phylogenetics & Evolution* **64**: 232–242.
- BREWER, M.S., WAFFORD, L., SPRUILL, C.L. & BOND, J.E. 2013. Arthropod phylogenetics in light of three novel millipede (Myriapoda: Diplopoda) mitochondrial genomes with comments on the appropriateness of mitochondrial genome sequence data for inferring deep level relationships. *PLOS ONE* **8** (7): e68005. DOI: 10.1371/journal.pone.0068005
- CRACRAFT, J. 1987. Species concepts and the ontology of evolution. *Biology and Philosophy* **2** (3): 329–346.
- DERKARABETIAN, S., LEDFORD, J. & HEDIN, M. 2011. Genetic diversification without obvious genitalic morphological divergence in harvestmen (Opiliones, Laniatores, Sclerobunus robustus) from montane sky islands of western North America. *Molecular Phylogenetics & Evolution* **61**: 844–853.
- DERYCKE, S., VANAVEBEKE, J., RIGAUX, A., BACKELJAU, T. & MOENS, T. 2010. Exploring the use of cytochrome oxidase c subunit I (COI) for DNA barcoding of free-living marine nematodes. *PLOS ONE* **5** (10): e13716. DOI:10.1371/journal.pone.0013716
- ELIAS, M., HILL, R.I., WILLMOTT, K.R., DASMAHAPATRA, K.K., BROWER, A.V.Z., MALLET, J. & JIGGINS, C.D. 2007. Limited performance of DNA barcoding in a diverse community of tropical butterflies. *Proceedings of the Royal Society B* **274**: 2881–2889.
- ENGHOFF, H., PETERSEN, G. & SEBERG, O. 2011. Phylogenetic relationships in the millipede family Julidae. *Cladistics* **27**: 606–616.
- 2013. The aberrant millipede genus *Pteridoiulus* and its position in a revised molecular phylogeny of the family Julidae (Diplopoda: Julida). *Invertebrate Systematics* **27**: 515–529.
- ESCALANTE, P., IBARRA-VAZQUEZ, A. & ROSAS-ESCOBAR, P. 2010. Tropical montane nymphalids in Mexico: DNA barcodes reveal greater diversity. *Mitochondrial DNA* **21**: 30–37.
- FELSENSTEIN, J. 1985. Confidence limits on phylogenies: an approach using bootstrap. *Evolution* **39**: 783–791.
- FUNK, D.J. 1999. Molecular systematic of cytochrome oxidase I and 16S from *Neochlamisus* leaf beetles and the importance of sampling. *Molecular Biology & Evolution* **16** (1): 67–82.
- HALL, T.A. 1999. BioEdit: a user-friendly biological sequence alignment editor and analysis program for Windows 95/98/NT. *Nucleic Acids Symposium Series* **41**: 95–98.
- HAMER, M. 2000. Review of the millipede genus *Doratogonus*, with description of fifteen new species from Southern Africa (Diplopoda, Spirostreptida, Spirostreptidae). *Annals of the Natal Museum* **41**: 1–76.
- 2009. Three new species of *Doratogonus* from South Africa (Diplopoda: Spirostreptida: Spirostreptidae). In: Roble, S.M. & Mitchell, J.C., eds, *A lifetime of contributions to myriapodology and the natural history of Virginia. A festschrift in honor of Richard L. Hoffman's 80th birthday*. Virginia Museum of Natural History Special Publication No. 16, Martinsville, USA, pp. 187–194.
- HEBERT, P.D.N., PENTON, E.H., BURNS, J.M., JANZEN, D.H. & HALLWACHS, W. 2004. Ten species in one: DNA barcoding reveals cryptic species in the neotropical skipper butterfly *Astraptes fulgerator*. *Proceedings of the National Academy of Sciences* **101** (41): 14812–14817.
- HEBERT, P.D.N., DEWAARD, J.R. & LANDRY, J-F. 2010. DNA barcodes for 1/1000 of the animal kingdom. *Biology Letters* **6**: 359–362.
- HOFFMAN, R.L. 2008. Two new genera of spirostreptid millipedes from central Africa, with revised terminology for male gonopod structures (Diplopoda: Spirostreptida). *Tropical Zoology* **21** (2): 167–186.
- HOPKIN, S.J. & READ, H.J. 1992. *The Biology of Millipedes*. New York: Oxford University Press.
- HUBER, B.A., RHEIMS, C.A. & BRESICOVIT, A.D. 2005. Speciation without changes in genital shape: a case study on Brazilian pholcid spiders (Araneae: Pholcidae). *Zoologische Anzeiger* **243**: 273–279.
- HUELSENBECK, J.P. & RONQUIST, F. 2001. MRBAYES: a Bayesian inference of phylogeny. *Bioinformatics* **17**: 754–755.

- HUNT, B., STRUGNELL, J., BEDNARSEK, N., LINSE, K., NELSON, R.J., PAKHOMOV, E., SEIBEL, B., STEINKE, D. & WÜRZBERG, L. 2010. Poles apart: the “bipolar” pteropod species *Limacina helicina* is genetically distinct between the Arctic and Antarctic oceans. *PLoS ONE* **5** (3): e9835. DOI:10.1371/journal.pone.0009835
- KRABBE, E. 1982. *Systematik der Spirostreptidae (Diplopoda, Spirostreptomorpha)*. Abhandlungen des Naturwissenschaftlichen Vereins in Hamburg. Hamburg: Verlag Paul Parey.
- LAVROV, D.V., BOORE, J.L. & BROWN, W.M. 2002. Complete mtDNA sequences of two millipedes suggest a new model for mitochondrial gene rearrangements: duplication and nonrandom loss. *Molecular Biology & Evolution* **19** (2): 163–169.
- MAREK, P.E. & BOND, J.E. 2007. A reassessment of apheloriine millipede phylogeny: additional taxa, Bayesian inference, and direct optimization (Polydesmida: Xystodesmidae). *Zootaxa* **1610**: 27–39.
- MEIER, R., SHIYANG, K., VAIDYA, G. & NG, P.K. 2006. DNA barcoding and taxonomy in Diptera: a tale of high intraspecific variability and low identification success. *Systematic Biology* **55** (5): 715–728.
- MORITZ, C. & CICERO, C. 2004. DNA barcoding: promise and pitfalls. *PLoS Biology* **2** (10): 28–30.
- MWABVU, T., HAMER, M., SLOTOW, R. & BARRACLOUGH, D. 2010. A revision of the taxonomy and distribution of *Archispirostreptus* Silvestri 1895 (Diplopoda, Spirostreptida, Spirostreptidae), and description of a new spirostreptid genus with three new species. *Zootaxa* **2567**: 1–49.
- POSADA, D. & CRANDALL, K.A. 1998. Modeltest: testing the model of DNA substitution. *Bioinformatics* **14**: 817–818.
- SIERWALD, P. & BOND, J.E. 2007. Current status of the myriapod class Diplopoda (Millipedes): taxonomic diversity and phylogeny. *Annual Review of Entomology* **52**: 401–20.
- SPELDA, J., REIP, H.S., OLIVEIRA-BIENER, U. & MELZER, R. 2011. Barcoding Fauna Bavarica: Myriapoda: a contribution to DNA sequence-based identifications of centipedes and millipedes (Chilopoda, Diplopoda). *ZooKeys* **156**: 123–139.
- SOLE-CAVA, A.M. & WÖRHEIDE, G. 2007. The perils and merits (or the Good, the Bad and the Ugly) of DNA barcoding of sponges – a controversial discussion. In: Custodio, M.R., Lobo-Hajdu, G., Muricy, G., eds, *Porifera, Research: Biodiversity, Innovation and Sustainability*. Serie livros 28. Rio de Janeiro: Museu Nacional, pp. 603–612.
- SWOFFORD, D.L. 2002. PAUP*. *Phylogenetic analysis using parsimony (*and other methods)*, Version 4. Sinauer Associates, Sunderland, Massachusetts.
- VENCES, M., THOMAS, M., VAN DER MEIJDEN, A., CHIARI, Y. & VIEITES, D.R. 2005. Comparative performance of the 16S rRNA gene in DNA barcoding of amphibians. (<http://www.frontiersinzoology.com/content/2/1/5>; accessed 10/6/2007)
- WESENER, T. 2012. *Nearctomeris*, a new genus of Pill Millipedes from North America, with a comparison of genetic distances of American Pill Millipede Genera (Glomerida, Glomeridae). *Zootaxa* **3258**: 58–68.
- WITT, J.D.S., THRELOFF, D.L. & HEBERT, P.D.N. 2006. DNA barcoding reveals extraordinary cryptic diversity in an amphipod genus: implications for desert spring conservation. *Molecular Ecology* **15**: 3073–3082.
- XIA, X. & XIE, Z. 2001. DAMBE: Software package for data analysis in molecular biology and evolution. *The Journal of Heredity* **92** (4): 371–373.
- XIA, X., XIE, Z., SALEMI, M., CHEN, L. & WANG, Y. 2003. An index of substitution saturation and its application. *Molecular Phylogenetics and Evolution* **26**: 1–7.
- XIA, X. & LEMEY, P. 2009. Assessing substitution saturation with DAMBE. In: Lemey, P., Salemi, M. & Vandamme, A.-M., eds, *The Phylogenetic Handbook: A Practical Approach to DNA and Protein Phylogeny*. 2nd edition. Cambridge: Cambridge University Press, pp. 615–630.
- ZUCKERKANDL, E. & PAULING, L.B. 1962. Molecular disease, evolution, and genic heterogeneity. In: Kasha, M. & Pullman, B., eds, *Horizons in Biochemistry*. New York: Academic Press, pp. 189–225.

