

Using Machine Learning to Estimate Global PM2.5 for Environmental Health Studies

Authors: Lary, D. J., Lary, T., and Sattler, B.

Source: Environmental Health Insights, 9(s1)

Published By: SAGE Publishing

URL: <https://doi.org/10.1177/EHI.S15664>

The BioOne Digital Library (<https://bioone.org/>) provides worldwide distribution for more than 580 journals and eBooks from BioOne's community of over 150 nonprofit societies, research institutions, and university presses in the biological, ecological, and environmental sciences. The BioOne Digital Library encompasses the flagship aggregation BioOne Complete (<https://bioone.org/subscribe>), the BioOne Complete Archive (<https://bioone.org/archive>), and the BioOne eBooks program offerings ESA eBook Collection (<https://bioone.org/esa-ebooks>) and CSIRO Publishing BioSelect Collection (<https://bioone.org/csiro-ebooks>).

Your use of this PDF, the BioOne Digital Library, and all posted and associated content indicates your acceptance of BioOne's Terms of Use, available at www.bioone.org/terms-of-use.

Usage of BioOne Digital Library content is strictly limited to personal, educational, and non-commercial use. Commercial inquiries or rights and permissions requests should be directed to the individual publisher as copyright holder.

BioOne is an innovative nonprofit that sees sustainable scholarly publishing as an inherently collaborative enterprise connecting authors, nonprofit publishers, academic institutions, research libraries, and research funders in the common goal of maximizing access to critical research.

Using Machine Learning to Estimate Global PM_{2.5} for Environmental Health Studies

D. J. Lary, T. Lary and B. Sattler

Hanson Center for Space Sciences, University of Texas at Dallas, Dallas, TX, USA.

Supplementary Issue: Ambient Air Quality (A)

ABSTRACT: With the increasing awareness of health impacts of particulate matter, there is a growing need to comprehend the spatial and temporal variations of the global abundance of ground-level airborne particulate matter (PM_{2.5}). Here we use a suite of remote sensing and meteorological data products together with ground based observations of PM_{2.5} from 8,329 measurement sites in 55 countries taken between 1997 and 2014 to train a machine learning algorithm to estimate the daily distributions of PM_{2.5} from 1997 to the present. We demonstrate that the new PM_{2.5} data product can reliably represent global observations of PM_{2.5} for epidemiological studies. An analysis of Baltimore schizophrenia emergency room admissions is presented in terms of the levels of ambient pollution. PM_{2.5} appears to have an impact on some aspects of mental health.

KEYWORDS: PM_{2.5}, machine learning, remote sensing, mental health, schizophrenia

SUPPLEMENT: Ambient Air Quality (A)

CITATION: Lary et al. Using Machine Learning to Estimate Global PM_{2.5} for Environmental Health Studies. *Environmental Health Insights* 2015;9(S1) 41–52
doi: 10.4137/EHI.S15664.

RECEIVED: August 21, 2014. **RESUBMITTED:** February 25, 2015. **ACCEPTED FOR PUBLICATION:** February 25, 2015.

ACADEMIC EDITOR: Timothy Kelley, Editor in Chief

TYPE: Original Research

FUNDING: The authors wish to acknowledge the Institute for Integrative Health, the University of Texas at Dallas, DoD TATRC for Award W81XWH-11-2-0165, Grant Number R21ES019713 from the National Institute of Environmental Health Sciences, and NASA for research funding through the award NNX11AL18G. The authors confirm that the funder had no influence over the study design, content of the article, or selection of this journal.

COMPETING INTERESTS: Authors disclose no potential conflicts of interest.

CORRESPONDENCE: david.lary@utdallas.edu

COPYRIGHT: © the authors, publisher and licensee Libertas Academica Limited. This is an open-access article distributed under the terms of the Creative Commons CC-BY-NC 3.0 License.

Paper subject to independent expert blind peer review by minimum of two reviewers. All editorial decisions made by independent academic editor. Upon submission manuscript was subject to anti-plagiarism scanning. Prior to publication all authors have given signed confirmation of agreement to article publication and compliance with all applicable ethical and legal requirements, including the accuracy of author and contributor information, disclosure of competing interests and funding sources, compliance with ethical requirements relating to human and animal study participants, and compliance with any copyright requirements of third parties. This journal is a member of the Committee on Publication Ethics (COPE).

Published by Libertas Academica. Learn more about this journal.

Introduction

In this study, we use machine learning to bring together multiple global datasets from remote sensing, meteorology, and population density, together with hourly in situ PM_{2.5} observations from 55 countries over the last two decades. This allowed the creation of a new global PM_{2.5} product at 10 km resolution from August 1997 to the present.¹ This new dataset is specifically designed to support health impact studies. We show some examples of this global PM_{2.5} dataset, and finish by examining the mental health emergency room admissions in Baltimore, MD.

In March, 2014, the World Health Organization (WHO) released a report stating that seven million premature deaths annually are linked to air pollution (<http://www.who.int/mediacentre/news/releases/2014/air-pollution/en/>). Airborne particulate matter is a significant component of this pollution. The wide range of health impacts (Table 1) of particulate matter (PM) with a diameter of 2.5 micrometers or less (PM_{2.5}) depend in part on the PM_{2.5} abundance at ground level in the atmospheric boundary layer (Fig. 1), where they can be inhaled. These health outcomes range from general mortality to pulmonary effects, asthma and chronic obstructive pulmonary disease (COPD), lung cancer, cardiovascular effects, reproductive effects, and even neurotoxic effects.

Our radically new approach¹ uses a suite of more than 40 NASA remote sensing and meteorological data products (Table 2) together with hourly ground-based observations of air quality from 8,329 measurement sites in 55 countries taken between 1997 and the present to train a proprietary machine learning algorithm to estimate the daily air quality from 1997 to the present. To the best of our knowledge, this is the most systematic and comprehensive study ever conducted. In addition, our PM_{2.5} product is the only one we know of that provides an uncertainty estimate. The PM_{2.5} data product is produced by a real-time processing system with a latency of 1 day and is then available for integration in a variety of health decision support tools. Our goal is learning from the past to inform the future.

Health impacts. Numerous studies have shown that among air pollutants PM_{2.5} has the strongest link with human health effects.^{3–6} Increased morbidity and mortality has been associated with exposure to PM_{2.5},⁷ thereby suggesting that improved life expectancy is possible by reducing the exposure level.⁸ Not only in the US but also in European studies a significant number of premature deaths, including cardiovascular and lung-cancer deaths, were attributed to long-term exposure to PM_{2.5}.^{9–11}

For more than half a century, researchers have been studying the impact of PM on health. Initially the attempt

**Table 1.** Particulate matter and health outcomes for PM₁₀, PM_{2.5}, and ultrafine particulates (UFPs) (modified from Ref. 2).

HEALTH OUTCOMES	SHORT-TERM STUDIES			LONG-TERM STUDIES		
	PM ₁₀	PM _{2.5}	UFP	PM ₁₀	PM _{2.5}	UFP
Mortality						
All causes	XXX	XXX	X	XX	XX	X
Cardiovascular	XXX	XXX	X	XX	XX	X
Pulmonary	XXX	XXX	X	XX	XX	X
Pulmonary effects						
Lung function, eg, PEF	XXX	XXX	XX	XXX	XXX	
Lung function growth				XXX	XXX	
Asthma and COPD exacerbation						
Acute respiratory symptoms		XX	X	XXX	XXX	
Medication use			X			
Hospital admission	XX	XXX	X			
Lung cancer						
Cohort				XX	XX	X
Hospital admission				XX	XX	X
Cardiovascular effects						
Hospital admission	XXX	XXX		X	X	
ECG-related endpoints						
Autonomic nervous system	XXX	XXX	XX			
Myocardial substrate and vulnerability		XX	X			
Vascular function						
Blood pressure	XX	XXX	X			
Endothelial function	X	XX	X			
Blood markers						
Pro-inflammatory mediators	XX	XX	XX			
Coagulation blood markers	XX	XX	XX			
Diabetes	X	XX	X			
Endothelial function	X	X	XX			
Reproduction						
Premature birth	X	X				
Birth weight	XX	X				
IUR/SGA	X	X				
Fetal growth						
Birth defects	X					
Infant mortality	XX	X				
Sperm quality	X	X				
Neurotoxic effects						
Central nervous system		X	XX			

Notes: X, few studies. XX, many studies. XXX, large number of studies.

Abbreviations: UFP, ultrafine particle; PEF, peak expiratory flow; COPD, chronic obstructive pulmonary disease; IUG, intrauterine growth restriction; SGA, small for gestational age.

was to learn about the possible adverse effects, and then the focus shifted to investigating the exposure–response relationships. Now with further advancement in technology and more awareness of health concerns, studies on composition-specific effects have emerged.¹² With the implementation of computational fluid dynamics (CFD) models and digital imaging of

organs, researchers have started to study the pathophysiology associated with PM to better understand the translocation of particulates in the human body after their deposition as well as the fate of these particulates in impacting health.

Most short-term exposure impact studies on PM_{2.5}, whether for morbidity or mortality, focus on cardiovascular/

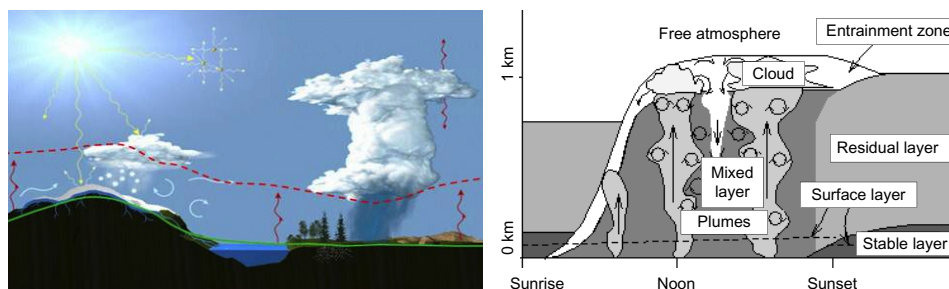


Figure 1. (Left) A schematic of the atmospheric boundary layer, which is the layer of the atmosphere closest to the earth's surface. (Right) Schematic representation of how the height of the boundary layer changes through the day.

cardiopulmonary¹³ or respiratory¹⁴ conditions. Our dataset, with daily temporal scale, is suitable for such studies. We are already studying daily asthma-related hospital admissions associated with $PM_{2.5}$ using our estimated data.

On the other hand, diseases such as lung cancer require study of the long-term exposure to $PM_{2.5}$. Data generated from this study is expected to contribute to health impact assessment (HIA) in different parts of the world concerning long-term exposure to $PM_{2.5}$. Currently, long-term PM values are not available in many localities, and in many instances $PM_{2.5}$ values are estimated from PM_{10} for long-term HIA.¹⁰ Studies also suggest that even low-level $PM_{2.5}$ exposure can contribute to serious health impacts.^{15–18} We have already created daily global estimates of $PM_{2.5}$ with an associated uncertainty from 1997 to the present,¹ providing an appropriate dataset for extended cohort studies for the areas with both high and low levels of ambient $PM_{2.5}$. In addition, long-range transportation of dust can provide potential vectors for bacteria.^{19,20} With global coverage of this study, tracking $PM_{2.5}$ transport is now easier for public health surveillance.

In recent years, researchers are finding it worthwhile to investigate a link of $PM_{2.5}$ exposure with adverse birth outcomes,^{21,22} epigenetic alteration,^{23–36} infant mortality,^{37–42} atherosclerosis,^{43–45} stroke,^{46–50} rheumatic autoimmune diseases,^{51,52} central nervous system disorders,^{53–57} and diabetes.^{58–60} Since many of these health conditions are interlinked, comprehensive studies are required to better understand the impact of $PM_{2.5}$. With increasing availability of electronic health records, reliable $PM_{2.5}$ data with seamless temporal and geographic coverage can contribute to revealing many unknowns of $PM_{2.5}$ impacts on health.

The type and degree of adverse effect greatly depends on the composition of the particulate matter. Particle composition is a function of both its primary source and any secondary chemical reactions and transformations that may occur during its atmospheric transport. Our current study does not provide information on the composition of $PM_{2.5}$. However, this study can be extended to examine the potential of source apportionment considering land use/land cover conditions and transportation mechanism. Recent studies show specific adverse impacts of exposure to ultrafine particles (UFPs).

$PM_{2.5}$ distribution. Various networks of ground-based sensors routinely measure the abundance of $PM_{2.5}$. However, the spatial coverage has many large gaps, and in some countries no observations are made at all. Globally, more observations of PM_{10} are available than $PM_{2.5}$. This paper focuses on $PM_{2.5}$, which in the literature has been related to a wider variety of health conditions than PM_{10} or UFPs (Table 1).

Several studies have sought to overcome this limitation of spatial coverage by using remote sensing and satellite-derived aerosol optical depth (AOD) coupled with regression and/or numerical models to estimate the ground-level abundance of $PM_{2.5}$.^{61–80}

Studies have shown that the relationship between $PM_{2.5}$ and AOD is not always suitable for simple regression models. Rather, it is determined by a multivariate function of a large number of parameters, including humidity, temperature, boundary layer height, surface pressure, population density, topography, wind speed, surface type, surface reflectivity, season, land use, normalized variance of rainfall events, size spectrum and phase of cloud particles, cloud cover, cloud optical depth, cloud top pressure, and the proximity to particulate sources.^{71,72,75,78,80–99} The picture is further complicated by the biases present in the satellite AOD products,^{100–104} the difference in spatial scales of the in situ point $PM_{2.5}$ observations and the remote sensing data (several kilometers per pixel), and, finally, the sharp $PM_{2.5}$ gradients that can exist in and around cities.

The large number of datasets we use in our fully nonlinear, nonparametric machine learning estimate of $PM_{2.5}$ are shown in Table 2. Future studies are recommended to derive further size fractions beyond just $PM_{2.5}$, particularly the UFPs in the submicrometer size range.

This study. Our approach and its validation are described elsewhere.¹ The approach makes five incremental contributions.

First, we believe that we have used the most comprehensive training dataset to date for a study that empirically relates hourly in situ $PM_{2.5}$ observations to remote sensing, meteorological, and other contextual environmental data. This is important because the local context of the various $PM_{2.5}$ observations varies widely, and to have a robust estimation of the global $PM_{2.5}$ distribution we must be able to have representative observations over a wide range of conditions.

**Table 2.** Datasets used in this study.

EARTH OBSERVATION DATA, MODEL, AND TOOL	PRODUCT (NAME AND RESOLUTION)	VARIABLES	RELATION TO PM _{2.5} ABUNDANCE
NASA GMAO GEOS 5	MERRA	Thirty-eight surface layer and land surface variables are used, including the height of the planetary boundary layer, precipitation, the surface humidity, wind speed, temperature, and density	Factors related to the production, dispersion, or removal of boundary layer PM _{2.5}
MERRA 1979 to present	2/3° × 1/2° (Lat., Long.)		
SeaWiFS 1997–2010	Deep Blue 0.5° × 0.5°	Aerosol optical depth, angstrom exponent, single scattering albedo, viewing geometry, illumination geometry, surface reflectivity, and assorted flags	Measure of total aerosol abundance in a vertical atmospheric profile
MODIS Terra & Aqua 2000–present 2002–present	MOD04 MYD04 Collection 5.1 10 km × 10 km	Deep Blue and Standard retrievals of aerosol optical depth, viewing geometry, illumination geometry, surface reflectivity, and assorted flags	Measure of total aerosol abundance in a vertical atmospheric profile
MODIS 2000–present	MCD43C3 0.05° × 0.05°	Seven wavelength band surface reflectance	Related to surface sources of PM _{2.5} and AOD biases
MODIS 2000–present	MCD45A1 500 m	Gridded burned area product, which contains burning and quality information on a per-pixel basis	Fires are a major source of PM _{2.5}

Abbreviations: AOD, aerosol optical depth; GMAO, global modeling and assimilation office; MERRA, modern-era retrospective analysis for research and applications; MODIS, moderate resolution imaging spectroradiometer; SeaWiFS, sea-viewing wide field-of-view sensor.

Hourly PM_{2.5} observations were acquired from 1997 to the present from across the world. In this study, we used hourly PM_{2.5} data from 8,329 measurement sites in 55 countries.

Second, we believe that we have used the widest range of contextual variables to date (over 30, these variables identified from the literature presented in the last section) in our analysis of the measured multivariate, nonlinear, nonparametric relationship between ground-based observations of PM_{2.5} and remote sensing observations, meteorological observations, and associated contextual information.

Third, we have used the most suitable multivariate, nonlinear, nonparametric machine learning approach currently available (briefly described in the next section), which has not been used previously for investigating the empirical relationship between hourly in situ PM_{2.5} observations and remote sensing, meteorological, and other contextual environmental data.

Fourth, we not only estimate the PM_{2.5} abundance but also provide an uncertainty estimate.

Fifth, we cover the longest time period, estimating the PM_{2.5} abundance on a daily basis from September 1, 1997, up to the present.

Many studies have shown that the relationship between PM_{2.5} and AOD is a multivariate function of a large number of parameters.^{71,75,78,80,98} Further, many of these relationships are nonlinear, some are of unknown functional form, and many have non-Gaussian distributions. Therefore, any successful description of the relationship between PM_{2.5} and AOD needs to be multivariate, nonparametric (we do not know the functional form from theory), and able to deal with nonlinear behavior and non-Gaussian distributed variables. This would suggest that a machine learning algorithm should be used.

A useful validation of the new PM_{2.5} data product is to survey the key features of the global PM_{2.5} distribution and see if they capture what we expect to find and what has been reported in the literature.

Examples. As an example, Figure 2 shows the monthly average of our machine learning PM_{2.5} product (μg m⁻³) for August 2001. The average of the observations at a given site is overlaid as color filled circles when observations were available for at least a third of the days. Notice the good agreement between the PM_{2.5} product and the observations. Also, as would be expected, in summer, the eastern US has much higher PM_{2.5} abundance than the western US. Central Valley and LA are clearly visible in California. Inset panel (a) is of Alaska and highlights common fire areas associated with elevated PM_{2.5}. Insets (b) and (c) show the good agreement between our product and observations. Inset (d) shows the elevated PM_{2.5} with the heavily agricultural Central Valley in California, the highly populated Los Angeles metro area, the Sonoran desert (one of the most active dust source regions in the US), the Four Corners power plants (some of the largest coal-fired generating stations in the US), and the Great Salt Lake Desert. Note the fine scaled features visible in this product.

Figure 3 shows a very different kind of example, this time for Indonesia during October 2005 and October 2006. In Equatorial Asia, the El Nino phase of the El Nino Southern Oscillation (ENSO) is linked to extended periods of drought lasting a few months to a year, particularly in areas undergoing land-use conversion to more fire-susceptible regimes, such as the peatlands of Sumatra and Borneo.¹⁰⁵ Fire emissions in these areas have been observed to be as much as 30 times

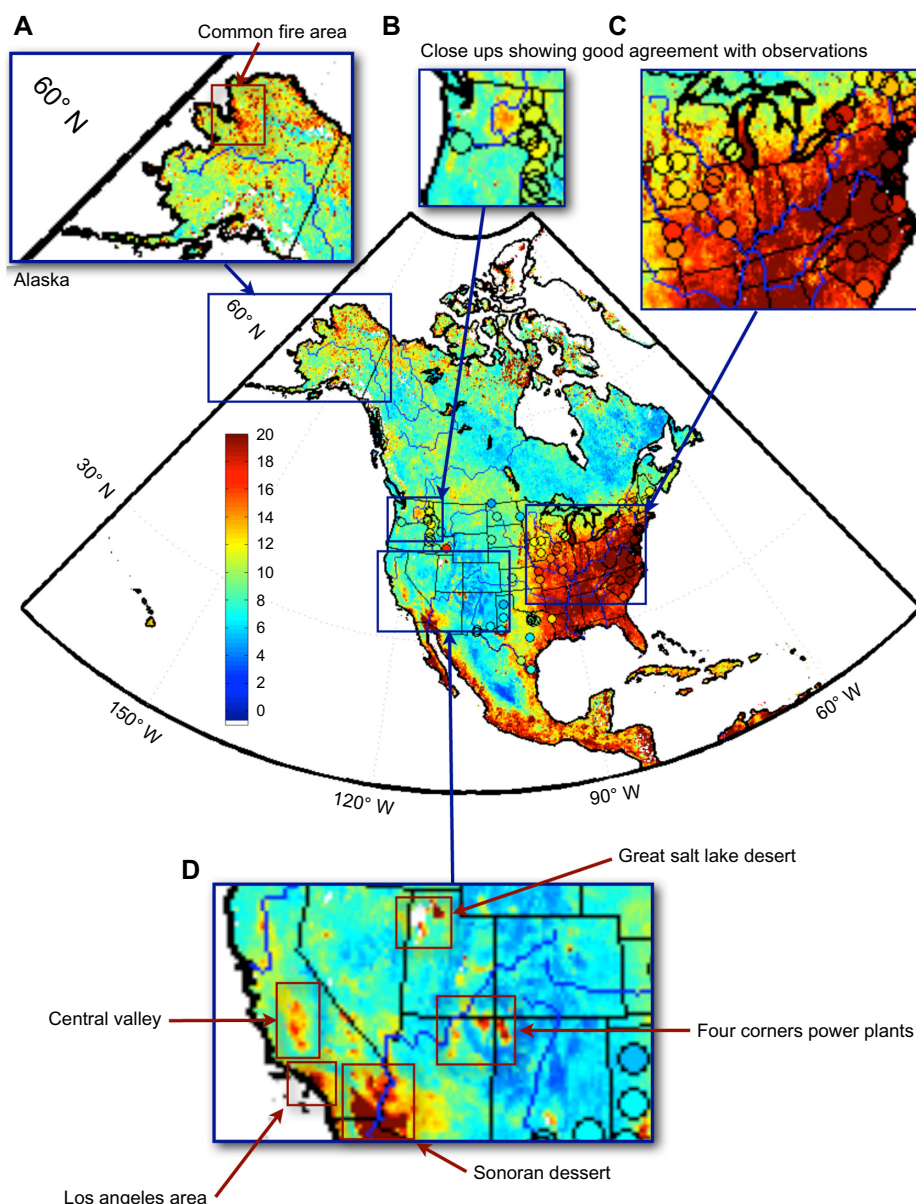


Figure 2. The monthly average of our machine learning PM_{2.5} product (µg m⁻³) for August 2001. The average of the observations at a given site is overlaid as color filled circles when observations were available for at least a third of the days. Notice the good agreement between the PM_{2.5} product and the observations. Also, as would be expected, in summer, the eastern US has much higher PM_{2.5} abundance than the western US. Central Valley and LA are clearly visible in California. Inset panel (A) is of Alaska and highlights common fire areas associated with elevated PM_{2.5}. Insets (B) and (C) show the good agreement between our product and observations. Inset (D) shows the elevated PM_{2.5} with the heavily agricultural Central Valley in California, the highly populated Los Angeles metro area, the Sonoran desert (one of the most active dust source regions in the US), and the Four Corners power plants (some of the largest coal-fired generating stations in the US), and the Great Salt Lake Desert. Note the fine scaled features visible in this product, which are in marked contrast to the AirNow product.

higher during El Nino compared to La Nina years.¹⁰⁶ Comparison of our PM_{2.5} product for October 2005 (panel a) and October 2006 (panel b) shows monthly average enhancements in surface PM_{2.5} concentrations during the 2006 El Nino event of more than 30 µg m⁻³. The large regions of burning are clearly visible in October 2006.

Finally, Figure 4 shows that our machine learning approach (background colors) well reproduces the US PM_{2.5} seasonal cycle when compared to climatology observations (overlaid color filled circles).

Limitations. A unique strength of this study is the daily global coverage from 1997 to the present. However, as a consequence of having a wide array of point sources, the PM_{2.5} abundance can contain high spatial variability on small scales. The spatial resolution of our study is 10 km × 10 km (approximately 0.1° × 0.1°) determined by the spatial resolution of the MODIS collection 5 aerosol products. Spatial variability on scales smaller than 10 km is present but unresolved in our data product. In addition, there are data gaps due to both cloud coverage and the difficulty that the

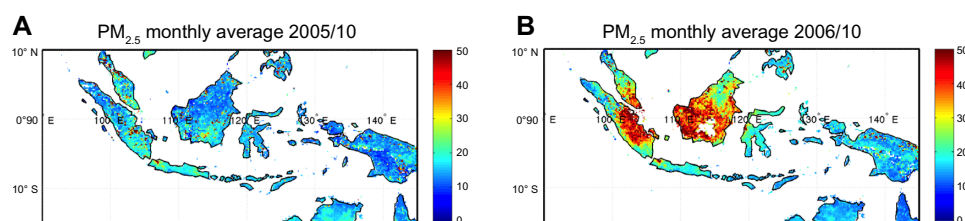


Figure 3. An example of our machine learning $PM_{2.5}$ product ($\mu g\ m^{-3}$) for Indonesia during October 2005 and October 2006. In Equatorial Asia, the El Nino phase of the El Nino Southern Oscillation (ENSO) is linked to extended periods of drought lasting a few months to a year, particularly in areas undergoing land-use conversion to more fire-susceptible regimes, such as the peatlands of Sumatra and Borneo.¹⁰⁵ Fire emissions in these areas have been observed to be as much as 30 times higher during El Nino compared to La Nina years.¹⁰⁶ Comparison of our $PM_{2.5}$ product for October 2005 (panel **A**) and October 2006 (panel **B**) shows monthly average enhancements in surface $PM_{2.5}$ concentrations during the 2006 El Nino event of more than $30\ \mu g\ m^{-3}$.

standard MODIS retrieval algorithm has with retrievals over bright surfaces.

In MODIS collection 5.1 Deep Blue Terra data is not available after 2007. When collection 6 is released, this should be remedied, and there will be greater Deep Blue data coverage and higher spatial resolution. Collection 6 will include various refinements to Deep Blue, including extended coverage to vegetated and bright land surfaces, improved cloud screening and surface reflectance, and aerosol microphysical

models. Many of these improvements were developed during the recent application of Deep Blue to SeaWiFS data.

MODIS collection 6 is about to be released and will help address several of these issues. Collection 6 will have a 3-km resolution and greater Deep Blue data coverage. Collection 6 will include various refinements to Deep Blue, including extended coverage to vegetated and bright land surfaces, improved cloud screening and surface reflectance, and aerosol microphysical models. In addition, any satellite instrument

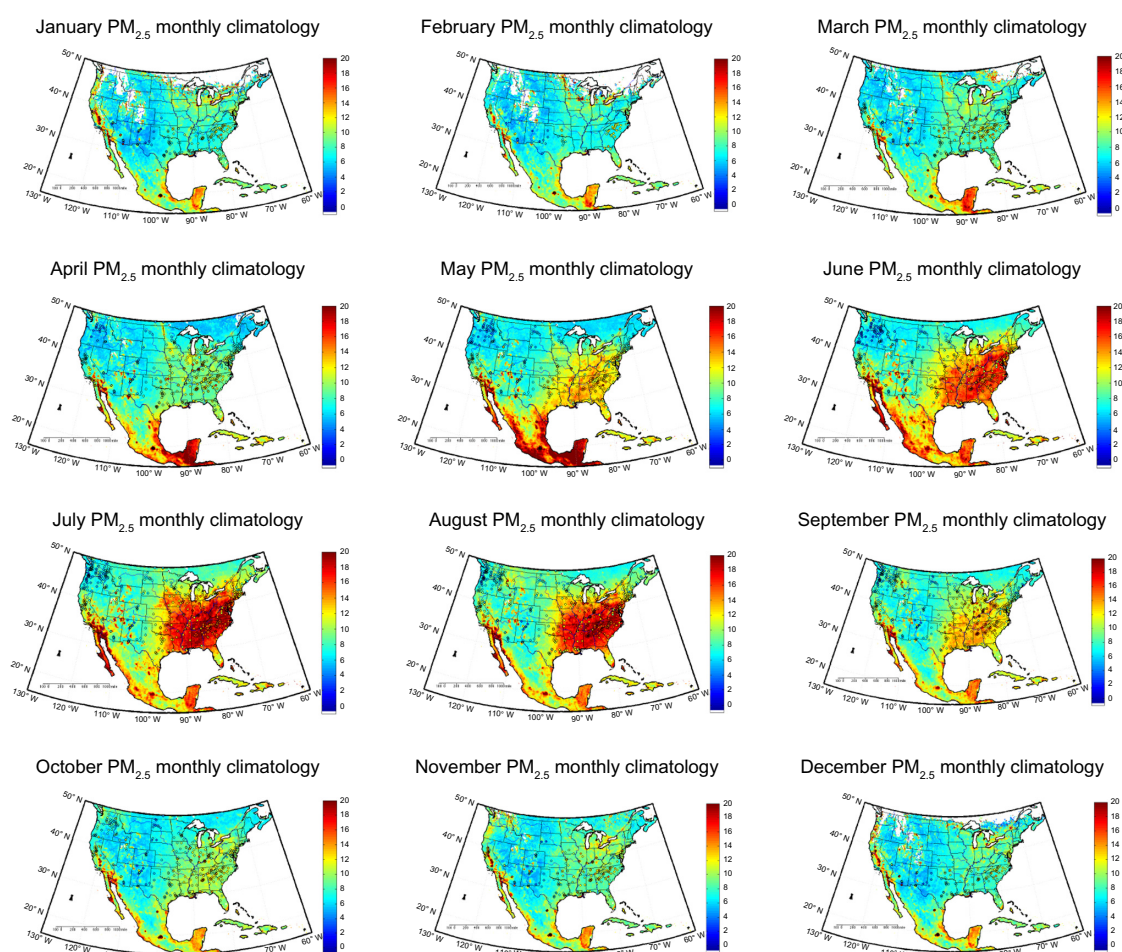


Figure 4. Monthly average $PM_{2.5}$ climatology (in $\mu g\ m^{-3}$) for 1997–2014 estimated using machine learning. The overlaid color filled circles are a climatology of available observations.



Table 3. Correlation between the ICD-9-CM diagnosis codes (column) and the environmental variables (row) temperature (T), carbon monoxide (CO), nitrogen dioxide (NO₂), and PM_{2.5}. For each correlation there are three numbers: first, the correlation coefficient; second, the *P*-value; and third the number of data points. The numbers in bold are entries with a correlation coefficient of >0.5.

	291.81	292	295.3	295.7	295.9	296.2	296.33	296.7	296.9	298.9	300	300.01	300.9
T	0.6	0.87	0.44	0.033	0.57	0.22	0.33	-0.13	-0.12	-0.11	0.41	0.66	0.49
	0.04	0.00025	0.16	0.92	0.055	0.5	0.3	0.69	0.72	0.74	0.19	0.018	0.1
	192	618	153	202	397	266	132	439	232	386	936	209	625
CO	-0.43	-0.71	-0.28	0.012	-0.3	-0.17	-0.37	0.068	0.0074	-0.023	-0.23	-0.52	-0.46
	0.16	0.0091	0.37	0.97	0.35	0.61	0.24	0.83	0.98	0.94	0.48	9.08	0.14
	192	618	153	202	397	266	132	439	232	386	936	209	625
NO ₂	-0.17	-0.4	-0.065	0.35	0.081	-0.082	0.034	-0.51	-0.57	-0.23	-0.074	-0.24	0.027
	0.6	0.2	0.84	0.27	0.8	0.8	0.92	0.091	0.054	0.48	0.82	0.45	0.93
	192	618	153	202	397	266	132	439	232	386	936	209	625
PM _{2.5}	0.71	0.8	0.43	0.12	0.61	0.055	0.23	0.28	-0.081	0.15	0.08	11.51	0.12
	0.0096	0.002	0.16	0.72	0.035	0.86	0.48	0.38	0.8	0.65	0.8	0.087	0.71
	192	618	153	202	397	266	132	439	232	386	936	209	625

	304	305	305.01	305.5	305.51	305.6	305.9	305.91	307.81	309	309.9	311	312.9	313.81
1	0.2	0.51	0.41	-0.088	0.67	0.76	0.43	-0.094	0.76	0.25	0.33	0.66	-0.27	-0.018
	0.53	0.093	0.19	0.79	0.017	0.0038	0.16	0.77	0.0044	0.44	0.29	0.019	0.39	0.95
	212	2011	233	296	126	146	641	318	285	141	242	2187	323	134
CO	-0.19	-0.5	-0.55	0.02	-0.59	-0.64	-0.55	-0.12	-0.71	-0.03	-0.43	-0.75	0.017	-0.04
	0.56	0.099	0.061	0.95	0.044	0.024	0.065	0.7	0.01	0.93	0.16	0.0054	0.96	0.9
	212	2011	233	296	126	146	641	318	285	141	242	2187	123	134
NO ₂	-0.047	0.11	-0.33	0.016	-0.47	-0.091	-0.2	-0.15	-0.36	0.26	-0.41	-0.23	-0.63	-0.097
	0.88	0.73	0.3	0.96	0.13	0.78	0.53	0.64	0.25	0.42	0.19	0.48	0.027	0.76
	212	2011	233	296	126	146	641	318	285	141	242	2187	323	134
PM _{2.5}	0.22	0.42	0.18	0.071	0.75	0.41	0.15	-6.28	0.89	0.0057	0.11	0.45	-0.3	-0.32
	0.5	0.17	0.58	0.83	0.0053	0.19	0.64	0.38	0.00013	0.99	0.73	0.14	0.34	0.31
	212	2011	233	296	126	146	641	318	285	141	242	2187	323	134

has a finite life, and both MODIS satellites are aging. We hope that data continuity will be provided by the recently launched Visible Infrared Imaging Radiometer Suite (VIIRS) on the Suomi National Polar-Orbiting Partnership weather satellite. When data quality from VIIRS becomes acceptable, that data can also be used.

Although, to our knowledge, we have used more training data than any other studies of PM_{2.5} estimation, there are yet certain parts of the world from where we are still collecting training data. This lack of uniformity in training data may cause some inconsistency in data product quality. However, as we make progress in acquiring more ground PM_{2.5} data from different parts of the world having gaps, quality of our dataset will improve for those parts of the world as well.

Emergency Room Admissions for Mental Health Issues in Baltimore

Epidemiological studies have consistently shown an association between air pollution and respiratory and cardiovascular conditions (Table 1). In this analysis, we extend

this to cover psychologically and mentally related health issues. By combining ambient air quality data and nonconfidential ambulatory care emergency department admissions in Maryland for 2002, we examined the hypothesis that the number of admissions to Baltimore City emergency rooms with psychologically and mentally related issues increase when the level of air pollution increases. The study yielded some interesting results, showing a correlation between certain air pollutants (ie, particulate matter) and specific types of schizophrenia (ICD 9 Code 295.9). Table 1 summarizes the key health impacts associated with airborne particulates. However, there is little published work on the relationship between air pollution and mental health. It is time to consider the impact of atmospheric pollution on mental health.

It is disturbing to see various psychiatric and psychological conditions on the rise [ie, depression, anxiety, post-traumatic stress disorder (PTSD), and suicide]. Moreover, the incidence of psychological disorders and mental illnesses is much higher in highly populated cities than in other parts of the country.¹⁰⁷ Stress of a busy city life plays a role,¹⁰⁸ and can serve as a trigger

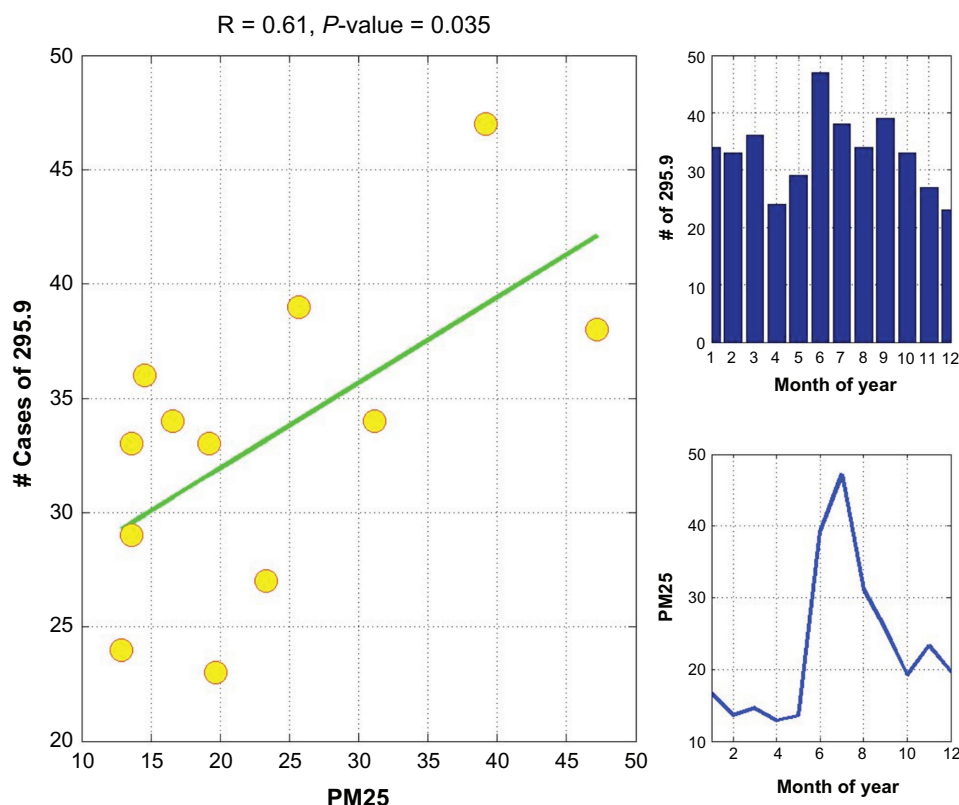


Figure 5. Correlation between the number of cases of unspecified schizophrenia (ICD-9-CM Diagnosis 295.9) admissions at Baltimore City emergency room and $PM_{2.5}$ in 2002.

for undesirable genetic predisposition. Psychotic disorders include various types of schizophrenias. As with other mental illnesses, their concentration is high in the bigger cities. Symptoms of schizophrenia may include delusions, hallucinations, disorganized speech, grossly disorganized or catatonic behavior, negative symptoms [ie, affective flattening, alogia (inability to speak), or avolition (inability to make decisions)]. Schizophrenia is divided into subtypes such as paranoid, disorganized, catatonic, undifferentiated, and residual.¹⁰⁹ It is now known that unless a person has a genetic predisposition for schizophrenia, he or she cannot develop the illness.¹¹⁰ Not all people who are genetically predisposed develop an acute form of schizophrenia. Although socioeconomic factors have been found to play an important role in the development of schizophrenia,¹¹¹ the precise origins remain unknown.

Interestingly, many symptoms present in mental disorders can be induced chemically, through administration of intravenous injection or inhaling. For many disorders, DSM (the Diagnostic and Statistical Manual) includes a section for “chemically induced” conditions, thereby attributing the etiology to chemical exposures. It is important to consider the different possible factors that contribute to the development of schizophrenia. For example, what role might heavy air pollution play in this process, considering that both pollution and mental illness are concentrated in large cities?

Mental health and air pollution. How are people at risk of schizophrenia affected by air pollution? Family history of

schizophrenia is the strongest and the best established risk factor for the disease at the individual level.¹¹² Pedersen has shown that the risk for schizophrenia increased with increasing levels of all air pollution variables and traffic density but only significantly for benzene, CO, and traffic.¹¹³ It has also been shown that the higher the levels of traffic, CO, and benzene, the greater was the risk of schizophrenia, while the levels of NO_x and NO_2 had no impact. However, only the level of traffic at birth had a significant effect. It was found that children born in an urban area had a greater risk of schizophrenia than those born in rural areas.

While previous studies have hinted at a link between air pollution and physiological conditions, we were interested to see whether there is a correlation between air pollution and psychological states. Krabbendam and van Os¹⁰⁷ in more than 10 studies have consistently shown that around one-third of all schizophrenia incidence may be related to unknown but likely unconfounded environmental factors operating in the urban environment that have an impact on developing children and adolescents to increase, relatively specifically, the later expression of psychosis-like at-risk mental states and overt psychotic disorders.

We used the nonconfidential ambulatory care file for emergency department admission data for 2002 in Maryland. The emergency room admissions data for the entire state of Maryland during 2002 consisted of 1,684,008 admissions. Of these, a total of 348,883 were for Baltimore City. To provide more reliable sample sizes, the data for mental disorders was

considered in monthly increments. For 2002, the total number of cases classified under the category of mental disorders in Baltimore City was 13,163.

The number of admissions in each month for each of the disorders was then correlated with air quality observations in Baltimore City. The EPA data were considered for every hour of every day of 2002. The monthly average of the daily maxima was used. In this study, we considered temperature (T), carbon monoxide (CO), nitrogen dioxide (NO₂), and particulate matter with a diameter of less than 2.5 micrometers (PM_{2.5}).

Analysis. Correlation is obviously not causation. However, we found that the number of people diagnosed with unspecified schizophrenia (ICD-9-CM Diagnosis 295.9) was significantly related to particulate matter ($r = 0.61$, $p = 0.03$) and temperature ($r = 0.56$, $p = 0.05$). The number of people diagnosed with unspecified schizophrenia had no correlation with CO or NO₂. Paranoid schizophrenia (ICD-9-CM Diagnosis 295.3) and schizo-affective type schizophrenia (ICD-9-CM Diagnosis 295.7) had no significant relation to the air pollutants we had data for.

Other types of schizophrenia had insufficient rates of admission to ascertain any effect. Other mental disorders were correlated with particulate matter. Drug psychosis was related to PM_{2.5} ($r = 0.8$, $p = 0.001$) and T ($r = 0.87$, $p = 0.002$). Nondependent abuse of drugs was related to PM_{2.5} ($r = 0.75$, $p = 0.004$) and T ($r = 0.67$, $p = 0.01$). Alcoholic psychosis was correlated to PM_{2.5} ($r = 0.7$, $p = 0.009$) and T ($r = 0.6$, $p = 0.04$). Neurotic disorders ($r = 0.66$, $p = 0.01$) and depressive disorder not elsewhere classified ($r = 0.67$, $p = 0.01$) were related to temperature. There is an extraneous factor with regard to CO that acted as a confounder for this study. Carbon monoxide is strongly negatively correlated with temperature. Thus, the highest levels of CO are observed in winter months. CO, a chemical poisonous to humans, is unlikely to have any causal relationship with decreased emergency room admissions of patients with mental disorders.

This analysis has yielded some interesting results, especially with regard to the correlation between PM_{2.5} and several mental disorders. However, it is important to keep in mind the possibility of other factors. For example, when we talk about a correlation between air pollution and drug-related disorders, it is possible that significant results are due to a third unknown factor. For example, major sporting events in Baltimore city, which might increase the pollution level due to heavy traffic, also might increase the number of emergency room admissions with alcohol or drug problems as a consequence of the event. As we think about the diagnosis of unspecified schizophrenia by the emergency room, another question arises: Are there coding issues here? Is there a bias toward giving a coding of unspecified schizophrenia, perhaps due to a lack of psychological expertise in the emergency room department.

Nonetheless, this study clearly demonstrates a correlation between PM_{2.5} and a number of psychological conditions. This air pollutant is not well known for associations with mental

health, nor has it been studied extensively with regard to mental health. In view of our findings, further research might be conducted in the area of mental health and air pollution.

Conclusions

A new approach to use ground-based observations of particulate matter together with a suite of remote sensing and meteorological data products to train a machine learning algorithm to estimate the daily distributions of PM_{2.5} has been demonstrated. This new PM_{2.5} daily global data product reproduces global observations and spans an unprecedented 16 years from 1997 to the present. The correlation coefficient for each of the five training datasets is 0.96 or greater, and the correlation coefficient for each of the independent validation datasets is 0.52 or greater. This implies that the PM_{2.5} abundance inferred using machine learning agrees well with the ground truth from in situ observations. The quality varies slightly with the satellite, with the best fits obtained from Terra data, followed by Aqua, and SeaWiFS. In all cases, the shape of PM_{2.5} data product reproduces the observations between the 25th and 75th quantiles. The machine learning PM_{2.5} data product is useful for human health studies because it resolves both spatial and temporal variability. PM_{2.5} appears to have a role not just in health outcomes such as cardiovascular and respiratory conditions, but also has an impact on some aspects of mental health. An example of this is the statistically significant association of emergency room admissions we found during 2002 for unspecified schizophrenia and airborne particulate matter in Baltimore, MD.

Acknowledgments

The contents of this paper are the sole responsibility of the authors and do not necessarily represent the official views of the funding agencies. The environment agencies of Albania, Australia, Austria, Azores Islands, Belarus, Belgium, Brazil, Canada, Canary Islands, Chile, China, Croatia, Cyprus, Czech Republic, Denmark, Estonia, Finland, France, Germany, Greece, Hong Kong, Hungary, Iceland, Ireland, India, Israel, Italy, Japan, Latvia, Lithuania, Madeira Islands, Malaysia, Mexico, Mongolia, New Zealand, Netherlands, Norway, Peru, Poland, Portugal, Russia, Singapore, Slovakia, South Africa, South Korea, Spain, Sweden, Taiwan, Thailand, United Kingdom, United States, and Vietnam are thanked for the use of their PM_{2.5} observations.

Author Contributions

Conceived and designed the experiments: DJL, TL, BS. Analyzed the data: DJL, TL. Wrote the first draft of the manuscript: DJL, TL. Contributed to the writing of the manuscript: DJL, TL, BS. Agree with manuscript results and conclusions: DJL, TL, BS. Jointly developed the structure and arguments for the paper: DJL, TL. Made critical revisions and approved final version: DJL, TL, BS. All authors reviewed and approved of the final manuscript.

REFERENCES

- Lary DJ. Estimating the global abundance of ground level presence of particulate matter (pm_{2.5}). *Geospat Health*. 2014;8(3):611–30.
- Ruckerl R, Ibalá-Mulli A, Koenig W, et al. Air pollution and markers of inflammation and coagulation in patients with coronary heart disease. *Am J Respir Crit Care Med*. 2006;173(4):432–41.
- Brook RD, Bard RL, Kaplan MJ, et al. The effect of acute exposure to coarse particulate matter air pollution in a rural location on circulating endothelial progenitor cells: results from a randomized controlled study. *Inhal Toxicol*. 2013;25(10):587–92.
- Brook RD, Rajagopalan S, Pope CA III; American Heart Association Council on Epidemiology and Prevention, Council on the Kidney in Cardiovascular Disease, and Council on Nutrition, Physical Activity and Metabolism, et al. Particulate matter air pollution and cardiovascular disease: an update to the scientific statement from the American heart association. *Circulation*. 2010;121(21):2331–78.
- Brook RD, Xu X, Bard RL, et al. Reduced metabolic insulin sensitivity following sub-acute exposures to low levels of ambient fine particulate matter air pollution. *Sci Tot Environ*. 2013;448:66–71.
- Pope CA III, Brook RD, Burnett RT, Dockery DW. How is cardiovascular disease mortality risk affected by duration and intensity of fine particulate matter exposure? an integration of the epidemiologic evidence. *Air Qual Atmos Health*. 2011;4(1):5–14.
- Johnston FH, Henderson SB, Chen Y, et al. Estimated global mortality attributable to smoke from landscape fires. *Environ Health Perspect*. 2012;120(5):695–701.
- Pope CA III, Burnett RT, Krewski D, et al. Cardiovascular mortality and exposure to airborne fine particulate matter and cigarette smoke: shape of the exposure-response relationship. *Circulation*. 2009;120(11):941–8.
- Ballester F, Medina S, Boldo E, et al. Reducing ambient levels of fine particulates could substantially improve health: a mortality impact assessment for 26 European cities. *J Epidemiol Community Health*. 2008;62(2):98–105.
- Boldo E, Linares C, Lumbreras J, et al. Health impact assessment of a reduction in ambient pm_{2.5} levels in Spain. *Environ Int*. 2011;37(2):342–8.
- Boldo E, Medina S, Le Tertre A, et al. Apheis: health impact assessment of long-term exposure to pm_{2.5} in 23 European cities. *Eur J Epidemiol*. 2006;21(6):449–58.
- Ayala A, Brauer M, Mauderly JL, Samet JM. Air pollutants and sources associated with health effects. *Air Qual Atmos Health*. 2012;5(2):151–67.
- Brook RD, Rajagopalan S, Pope CA III; American Heart Association Council on Epidemiology and Prevention, Council on the Kidney in Cardiovascular Disease, and Council on Nutrition, Physical Activity and Metabolism, et al. Particulate matter air pollution and cardiovascular disease: an update to the scientific statement from the American heart association. *Circulation*. 2010;121(21):2331–78.
- Dockery DW, Pope CA, Xu XP, et al. An association between air-pollution and mortality in 6 United-States cities. *New Engl J Med*. 1993;329(24):1753–9.
- Cesaroni G, Forastiere F, Stafoggia M, et al. Long term exposure to ambient air pollution and incidence of acute coronary events: prospective cohort study and meta-analysis in 11 European cohorts from the escape project. *BMJ*. 2014;348. doi: <http://dx.doi.org/10.1136/bmj.f7412>
- Crouse DL, Peters PA, van Donkelaar A, et al. Risk of non accidental and cardiovascular mortality in relation to long-term exposure to low concentrations of fine particulate matter: a Canadian national-level cohort study. *Environ Health Perspect*. 2012;120(5):708–14. DOI: 10.1289/ehp.1104049.
- Franklin M, Zeka A, Schwartz J. Association between pm_{2.5} and all-cause and specific-cause mortality in 27 US communities. *J Expo Sci Environ Epidemiol*. 2007;17(3):279–87. doi: 10.1038/sj.jes.7500530.
- Pope C, Dockery A, Douglas W. Health effects of fine particulate air pollution: lines that connect. *J Air Waste Manage Assoc*. 2006;56(6):709–42.
- Ginoux P, Torres O. Empirical toms index for dust aerosol: applications to model validation and source characterization. *J Geophys Res Atmos*. 2003;108(D17).
- Prospero JM. Global dust transport over the oceans: the link to climate. *Geochim Cosmochim Acta*. 2003;67(18):A384–4.
- Dadvand P, Parker J, Bell ML, et al. Maternal exposure to particulate air pollution and term birth weight: a multi-country evaluation of effect and heterogeneity. *Environ Health Perspect*. 2013;121(3):367–73.
- Slama R, Darrow L, Parker J, et al. Meeting report: atmospheric pollution and human reproduction. *Environ Health Perspect*. 2008;116(6):791–8.
- Baccarelli A, Tarantini L, Bonzini M, et al. Effects of particulate matter on genomic DNA methylation content and inos promoter methylation. *Epidemiology*. 2008;19(6):S259–60.
- Baccarelli A, Barretta F, Dou C, et al. Effects of particulate air pollution on blood pressure in a highly exposed population in Beijing, China: a repeated measure study. *Environ Health*. 2011;10:108. <http://www.ehjournal.net/content/10/1/108>
- Baccarelli A, Wright RO, Bollati V, et al. Rapid DNA methylation changes after exposure to traffic particles. *Am J Respir Crit Care Med*. 2009;179(7):572–8.
- Byun HM, Panni T, Motta V, et al. Effects of airborne pollutants on mitochondrial DNA methylation. *Part Fibre Toxicol*. 2013;18(10). <http://www.particleandfibretoxicology.com/content/10/1/18>
- De Prins S, Koppen G, Jacobs G, et al. Influence of ambient air pollution on global DNA methylation in healthy adults: a seasonal follow-up. *Environ Int*. 2013;59:418–24.
- Hou L, Wang S, Dou C, et al. Air pollution exposure and telomere length in highly exposed subjects in Beijing, China: a repeated-measure study. *Environ Int*. 2012;48:71–7.
- Hou L, Zhang X, Dioni L, et al. Inhalable particulate matter and mitochondrial DNA copy number in highly exposed individuals in Beijing, China: a repeated measure study. Part Fibre Toxicol. 2013;10:17. <http://www.particleandfibretoxicology.com/content/10/1/17>
- Hou L, Zhu ZZ, Zhang X, et al. Airborne particulate matter and mitochondrial damage: a cross-sectional study. *Environ Health*. 2010;48(9). <http://www.ehjournal.net/content/9/1/48>
- Ji H, Hershey GK. Genetic and epigenetic influence on the response to environmental particulate matter. *J Allergy Clin Immunol*. 2012;129(1):33–41.
- Madrigano J, Baccarelli A, Mittleman MA, et al. Prolonged exposure to particulate pollution, genes associated with glutathione pathways, and DNA methylation in a cohort of older men. *Environ Health Perspect*. 2011;119(7):977–82.
- Patel MM, Miller RL. Rapid DNA methylation changes after exposure to traffic particles: the issue of spatio-temporal factors. *Am J Respir Crit Care Med*. 2009;180(10):1030–1030.
- Salam MT, Millstein J, Li YF, Lurmann FW, Margolis HG, Gilliland FD. Birth outcomes and prenatal exposure to ozone, carbon monoxide, and particulate matter: results from the children's health study. *Environ Health Perspect*. 2005;113(11):1638–44.
- Salam MT. Genetic and epigenetic variations in inducible nitric oxide synthase promoter, particulate pollution, and exhaled nitric oxide levels in children. *J Allergy Clin Immunol*. 2012;129(1):232–U338.
- Tarantini L, Bonzini M, Apostoli P, et al. Effects of particulate matter on genomic DNA methylation content and inos promoter methylation. *Environ Health Perspect*. 2009;117(2):217–22.
- Dales R, Burnett RT, Smith-Doiron M, Stieb DM, Brook JR. Air pollution and sudden infant death syndrome. *Pediatrics*. 2004;113(6):E628–31.
- Glinianaia SV, Rankin J, Bell R, Pless-Mulloli T, Howel D. Does particulate air pollution contribute to infant death? a systematic review. *Environ Health Perspect*. 2004;112(14):1365–70.
- Lipfert FW, Zhang J, Wyzga RE. Infant mortality and air pollution: a comprehensive analysis of US data for 1990. *J Air Waste Manage Assoc*. 2000;50(8):1350–66.
- Woodruff TJ, Grillo J, Schoendorf KC. The relationship between selected causes of postneonatal infant mortality and particulate air pollution in the United States. *Environ Health Perspect*. 1997;105(6):608–12.
- Woodruff TJ, Morello-Frosch R, Jesdale B. Air pollution and preeclampsia among pregnant women in California, 1996–2004. *Epidemiology*. 2008;19(6):S310–S310.
- Woodruff TJ, Parker JD, Schoendorf KC. Fine particulate matter (pm_{2.5}) air pollution and selected causes of postneonatal infant mortality in California. *Environ Health Perspect*. 2006;114(5):786–90.
- Araujo JA. Particulate air pollution, systemic oxidative stress, inflammation, and atherosclerosis. *Air Qual Atmos Health*. 2011;4(1):79–93.
- Araujo JA, Barajas B, Kleinman M, et al. Ambient particulate pollutants in the ultrafine range promote early atherosclerosis and systemic oxidative stress. *Circ Res*. 2008;102(5):589–96.
- Kaufman J. An update on the multiethnic study of atherosclerosis and air pollution. *Epidemiology*. 2011;22(1):S226–7.
- Brook RD. Cardiovascular effects of air pollution. *Clin Sci*. 2008;115(5–6):175–87.
- Brook RD, Rajagopalan S. Particulate matter, air pollution, and blood pressure. *J Am Soc Hypertens*. 2009;3(5):332–50.
- Brook RD, Rajagopalan S. Can what you breathe trigger a stroke within hours? *Arch Intern Med*. 2012;172(3):235–6.
- Maheswaran R, Pearson T, Smeeton NC, Beevers SD, Campbell MJ, Wolfe CD. Impact of outdoor air pollution on survival after stroke: population-based cohort study. *Stroke*. 2010;41(5):869–77.
- Maheswaran R, Pearson T, Smeeton NC, Beevers SD, Campbell MJ, Wolfe CD. Outdoor air pollution and incidence of ischemic and hemorrhagic stroke: a small-area level ecological study. *Stroke*. 2012;43(1):22–7.
- Farhat SC, Silva CA, Orione MA, Campos LM, Sallum AM, Braga AL. Air pollution in autoimmune rheumatic diseases: a review. *Autoimmun Rev*. 2011;11(1):14–21.
- Zeft AS, Prahalad S, Lefevre S, et al. Juvenile idiopathic arthritis and exposure to fine particulate air pollution. *Clin Exp Rheumatol*. 2009;27(5):877–84.
- Block ML, Calderón-Garcidueñas L. Air pollution: mechanisms of neuroinflammation and CNS disease. *Trends Neurosci*. 2009;32(9):506–16.
- Chen JC, Schwartz J. Neurobehavioral effects of ambient air pollution on cognitive performance in US adults. *Neurotoxicology*. 2009;30(2):231–9.
- Kreyling WG, Semmler-Behnke M, Moller W. Ultrafine particle-lung interactions: does size matter? *J Aero Med Dep Clearance Effect Lung*. 2006;19(1):74–83.

56. Sunderman FW Jr. Review: nasal toxicity, carcinogenicity, and olfactory uptake of metals. *Ann Clin Lab Sci*. 2001;31(1):3–24.
57. Wang BL, Li XL, Xu XB, Sun YG, Zhang Q. Prevalence of and risk factors for subjective symptoms in urban preschool children without a cause identified by the guardian. *Int Arch Occup Environ Health*. 2012;85(5):483–91.
58. Andersen ZJ, Raaschou-Nielsen O, Ketzel M, et al. Diabetes incidence and long-term exposure to air pollution a cohort study. *Diabetes Care*. 2012;35(1):92–8.
59. Andersen ZJ. Health effects of long-term exposure to air pollution: an overview of major respiratory and cardiovascular diseases and diabetes. *Chem Indus Chem Eng Q*. 2012;18(4):617–22.
60. Pearson JF, Bachireddy C, Shyamprasad S, Goldfine AB, Brownstein JS. Association between fine particulate matter and diabetes prevalence in the U.S. *Diabetes Care*. 2010;33(10):2196–201.
61. Engel-Cox JA, Hoff RM, Haymet ADJ. Recommendations on the use of satellite remote-sensing data for urban air quality. *J Air Waste Manage Assoc*. 2004;54(11).
62. Engel-Cox JA, Holloman CH, Coutant BW, Hoff RM. Qualitative and quantitative evaluation of MODIS satellite sensor data for regional and urban scale air quality. *Atmos Environ*. 2004;38(16).
63. Engel-Cox J, Oanh NTK, van Donkelaar A, Martin RV. Toward the next generation of air quality monitoring: particulate matter. *Atmos Environ*. 2013;80(0):584–90.
64. Engel-Cox JA, Hoff RM, Rogers R, Dimmick F, Zell ER. Integrating lidar and satellite optical depth with ambient monitoring for 3-dimensional particulate characterization. *Atmos Environ*. 2006;40(40).
65. Hoff R, Christopher SA. Remote Sensing of Particulate Pollution from Space: Have We Reached the Promised Land? *Journal of the Air & Waste Management Association*, 2009;(59):645–75, 2009. <http://dx.doi.org/10.3155/1047-3289.59.6.645>
66. Hoffmann B, Moebus S, Dragano N, et al. Chronic residential exposure to particulate matter air pollution and systemic inflammatory markers. *Environ Health Perspect*. 2009;117(8):1302–8.
67. Kumar N, Chu AD, Foster AD, Peters T, Willis R. Satellite remote sensing for developing time and space resolved estimates of ambient particulate in Cleveland, OH. *Aerosol Sci Technol*. 2011;45(9).
68. Lee HJ, Liu Y, Coull BA, Schwartz J, Koutrakis P. A novel calibration approach of MODIS AOD data to predict PM_{2.5} concentrations. *Atmos Chem Phys*. 2011;11(15).
69. Lee HJ. PM_{2.5} prediction modeling using MODIS AOD and its implications for health effect studies. *Epidemiology*. 2011;22(1).
70. Liu Y, Paciorek C, Koutrakis P. Estimating daily pm_{2.5} exposure in massachusetts with satellite aerosol remote sensing data, meteorological, and land use information. *Epidemiology*. 2008;19(6).
71. Liu Y, Sarnat JA, Kilaru A, Jacob DJ, Koutrakis P. Estimating ground-level pm_{2.5} in the eastern united states using satellite remote sensing. *Environ Sci Technol*. 2005;39(9).
72. Liu Y, Franklin M, Kahn R, Koutrakis P. Using aerosol optical thickness to predict ground-level PM_{2.5} concentrations in the st. louis area: a comparison between MISR and MODIS. *Remote Sens Environ*. 2007;107(1–2).
73. Martin RV. Satellite remote sensing of surface air quality. *Atmos Environ*. 2008;42(34).
74. van Donkelaar A, Martin R, Verduzco C, et al. A hybrid approach for predicting pm_{2.5} exposure response. *Environ Health Perspect*. 2010;118(10).
75. van Donkelaar A, Martin RV, Park RJ. Estimating ground-level pm_{2.5} using aerosol optical depth determined from satellite remote sensing. *J Geophys Res*. 2006;111(D21).
76. van Donkelaar A, Martin RV, Brauer M, et al. Global estimates of ambient fine particulate matter concentrations from satellite-based aerosol optical depth: development and application. *Environ Health Perspect*. 2010;118(6).
77. van Donkelaar A, Martin RV, Levy RC, et al. Satellite-based estimates of ground-level fine particulate matter during extreme events: a case study of the moscow fires in 2010. *Atmos Environ*. 2011;45(34).
78. Weber SA, Engel-Cox JA, Hoff RM, Prados AI, Zhang H. An improved method for estimating surface fine particle concentrations using seasonally adjusted satellite aerosol optical depth. *J Air Waste Manage Assoc*. 2010;60(5).
79. Zhang H, Lyapustin A, Wang Y, et al. A multi-angle aerosol optical depth retrieval algorithm for geostationary satellite data over the United States. *Atmos Chem Phys*. 2011;11(23).
80. Zhang H, Hoff RM, Engel-Cox JA. The relation between moderate resolution imaging spectroradiometer (MODIS) aerosol optical depth and PM_{2.5} over the united states: a geographical comparison by US Environmental Protection Agency Regions. *J Air Waste Manage Assoc*. 2009;59(11).
81. Choi YS, Ho CH, Chen D, Noh YH, Song CK. Spectral analysis of weekly variation in PM₁₀ mass concentration and meteorological conditions over China. *Atmos Environ*. 2008;42(4).
82. Liu YJ, Harrison RM. Properties of coarse particles in the atmosphere of the United Kingdom. *Atmos Environ*. 2011;45(19).
83. Liu Y, Chen D, Khan RA, He K. Review of the applications of multiangle imaging spectroradiometer to air quality research. *Sci China D Earth Sci*. 2009;52(1).
84. Liu Y, He K, Li S, Wang Z, Christiani DC, Koutrakis P. A statistical model to evaluate the effectiveness of pm_{2.5} emissions control during the Beijing 2008 Olympic games. *Environ Int*. 2012;44.
85. Liu Y, Kahn RA, Chaloulakou A, Koutrakis P. Analysis of the impact of the forest fires in august 2007 on air quality of athens using multi-sensor aerosol remote sensing data, meteorology and surface observations. *Atmos Environ*. 2009;43(21).
86. Liu Y, Koutrakis P, Kahn R. Estimating fine particulate matter component concentrations and size distributions using satellite-retrieved fractional aerosol optical depth: part 1 – method development. *J Air Waste Manage Assoc*. 2007;57(11).
87. Liu Y, Koutrakis P, Kahn R, Turqueti S, Yantosca RM. Estimating fine particulate matter component concentrations and size distributions using satellite-retrieved fractional aerosol optical depth: part 2 – a case study. *J Air Waste Manage Assoc*. 2007;57(11).
88. Liu Y, Paciorek CJ, Koutrakis P. Estimating regional spatial and temporal variability of pm_{2.5} concentrations using satellite data, meteorology, and land use information. *Environ Health Perspect*. 2009;117(6).
89. Lyamani H, Olmo FJ, Alcantara A, Alados-Arboledas L. Atmospheric aerosols during the 2003 heat wave in southeastern Spain I: spectral optical depth. *Atmos Environ*. 2006;40(33).
90. Natunen A, Arola A, Mielonen T, Huttunen J, Komppula M, Lehtinen KEJ. A multi-year comparison of PM_{2.5} and aod for the helsinki region. *Boreal Environment Research*. 2010;15(6).
91. Paciorek CJ, Liu Y. Limitations of remotely sensed aerosol as a spatial proxy for fine particulate matter. *Environ Health Perspect*. 2009;117(6).
92. Paciorek CJ, Liu Y; HEI Health Review Committee. Assessment and statistical modeling of the relationship between remotely sensed aerosol optical depth and PM_{2.5} in the eastern united states. *Res Rep Health Eff Inst*. 2012;167.
93. Paciorek CJ, Liu Y, Moreno-Macias H, Kondragunta S. Spatiotemporal associations between GOES aerosol optical depth retrievals and ground-level PM_{2.5}. *Environ Sci Technol*. 2008;42.
94. Pelletier B, Santer R, Vidot J. Retrieving of particulate matter from optical measurements: a semiparametric approach. *J Geophys Res Atmos*. 2007;112(D6).
95. Rajeev K, Parameswaran K, Nair S, Meenu S. Observational evidence for the radiative impact of Indonesian smoke in modulating the sea surface temperature of the equatorial indian ocean. *J Geophys Res Atmos*. 2008;113(D17).
96. Schaap M, Apituley A, Timmermans RMA, Koelemeijer RBA, de Leeuw G. Exploring the relation between aerosol optical depth and PM_{2.5} at cabauw, the netherlands. *Atmos Chem Phys*. 2009;9(3).
97. Tian D, Wang Y, Bergin M, Hu Y, Liu Y, Russell AG. Air quality impacts from prescribed forest fires under different management practices. *Environ Sci Technol*. 2008;42(8).
98. van de Kasstele J, Koelemeijer RBA, Dekkers ALM, Schaap M, Homan CD, Stein A. Statistical mapping of pm₁₀ concentrations over western europe using secondary information from dispersion modeling and MODIS satellite observations. *Stochastic Environ Res Risk Assess*. 2006;21(2).
99. Wang Q, Shao M, Liu Y, et al. Impact of biomass burning on urban air quality estimated by organic tracers: Guangzhou and Beijing as cases. *Atmos Environ*. 2007;41(37).
100. Hyer EJ, Reid JS, Zhang J. An over-land aerosol optical depth data set for data assimilation by filtering, correction, and aggregation of MODIS collection 5 optical depth retrievals. *Atmos Measure Tech*. 2011;4(3):379–408.
101. Lary DJ, Remer LA, MacNeill D, Roscoe B, Paradise S. Machine learning and bias correction of MODIS aerosol optical depth. *IEEE Geosci Remote Sens Lett*. 2009;6(4):694–8.
102. Reid JS, Hyer EJ, Johnson RS, et al. Observing and understanding the southeast Asian aerosol system by remote sensing: an initial review and analysis for the seven southeast Asian studies (7 seas) program. *Atmos Res*. 2013;122(0):403–68.
103. Shi Y, Zhang J, Reid JS, Hyer EJ, Hsu NC. Critical evaluation of the MODIS deep blue aerosol optical depth product for data assimilation over north africa. *Atmos Measure Tech Discuss*. 2012;5(5):7815–65.
104. Zhang J, Reid JS. An analysis of clear sky and contextual biases using an operational over ocean MODIS aerosol product. *Geophys Res Lett*. 2009;36(15).
105. Page S, Hoschilo A, Langner A, et al. Tropical peatland fires in southeast asia. *Tropical Fire Ecol*. Springer Praxis Books, 2009:263–87. http://link.springer.com/chapter/10.1007/978-3-540-77381-8_9
106. van der Werf GR, Dempewolf J, Trigg SN, et al. Climate regulation of fire emissions and deforestation in equatorial asia. *PNAS*. 2008;105(51):20350–5.
107. Krabbendam L, van Os J. Schizophrenia and urbanicity: a major environmental influence? Conditional on genetic risk. *Schizophr Bull*. 2005;31(4):795–9.
108. Beard JR, Tracy M, Vlahov D, Galea S. Trajectory and socioeconomic predictors of depression in a prospective study of residents of New York city. *Ann Epidemiol*. 2008;18(3):235–43.
109. Seligman MEP, Walker EF, Rosenhan DL. *Abnormal Psychology*. 4th ed. Norton, New York: Academic Press; 2001:00067861. [Martin E.P. Seligman, Elaine F. Walker, David L. Rosenhan. ill. (chiefly col.); 29 cm. Rev. ed. of: *Abnormal psychology*/David L. Rosenhan. 3rd ed. 1995. Includes bibliographical references (p. A17-A108) and index].



110. Lawrie SM, McIntosh AM, Hall J. Brain structure and function changes during the development of schizophrenia: the evidence from studies of subjects at increased genetic risk. *Schizophr Bull.* 2008;34(2):330–40.
111. Werner S, Malaspina D, Rabinowitz J. Socioeconomic status at birth is associated with risk of schizophrenia: population-based multilevel study. *Schizophr Bull.* 2007;33(6):1373–8.
112. Gottesman II, Bertelsen A. Confirming unexpressed genotypes for schizophrenia. risks in the offspring of fischer's danish identical and fraternal discordant twins. *Arch Gen Psychiatry.* 1989;46(10):867–72.
113. Pedersen CB, Raaschou-Nielsen O, Hertel O, Mortensen PB. Air pollution from traffic and schizophrenia risk. *Schizophr Res.* 2004;66(1):83–5.