

Two new species of *Kalanchoe* (Crassulaceae) from western Madagascar

Authors: Klein, David-Paul, Mangelsdorff, Ralph, Letsara, Rokiman, Shtein, Ronen, and Rodewald, Seraina E.

Source: Candollea, 80(1) : 21-31

Published By: The Conservatory and Botanical Garden of the City of Geneva (CJBG)

URL: <https://doi.org/10.15553/c2025v801a3>

The BioOne Digital Library (<https://bioone.org/>) provides worldwide distribution for more than 580 journals and eBooks from BioOne's community of over 150 nonprofit societies, research institutions, and university presses in the biological, ecological, and environmental sciences. The BioOne Digital Library encompasses the flagship aggregation BioOne Complete (<https://bioone.org/subscribe>), the BioOne Complete Archive (<https://bioone.org/archive>), and the BioOne eBooks program offerings ESA eBook Collection (<https://bioone.org/esa-ebooks>) and CSIRO Publishing BioSelect Collection (<https://bioone.org/csiro-ebooks>).

Your use of this PDF, the BioOne Digital Library, and all posted and associated content indicates your acceptance of BioOne's Terms of Use, available at www.bioone.org/terms-of-use.

Usage of BioOne Digital Library content is strictly limited to personal, educational, and non-commercial use. Commercial inquiries or rights and permissions requests should be directed to the individual publisher as copyright holder.

BioOne is an innovative nonprofit that sees sustainable scholarly publishing as an inherently collaborative enterprise connecting authors, nonprofit publishers, academic institutions, research libraries, and research funders in the common goal of maximizing access to critical research.

Two new species of *Kalanchoe* (Crassulaceae) from western Madagascar

David-Paul Klein, Ralph Mangelsdorff, Rokiman Letsara, Ronen Shtein & Seraina E. Rodewald

Abstract

KLEIN, D.-P., R. MANGELSDORFF, R. LETSARA, R. SHTEIN & S.E. RODEWALD (2025). Two new species of *Kalanchoe* (Crassulaceae) from western Madagascar. *Candollea* 80: 21–31. In English, English and French abstracts. DOI: <http://dx.doi.org/10.15553/c2025v801a3>

Two new species of *Kalanchoe* Adans. (Crassulaceae) from the Tsingy de Bemaraha National Park, western Madagascar, are described and illustrated, supplemented by detailed notes on their habitat, ecology, and taxonomic position. *Kalanchoe luteola* D.-P. Klein, Letsara & Mangelsdorff is distinguished from other known representatives of *Kalanchoe* subg. *Kalanchoe* from Madagascar by its particularly long, creamy yellow corolla tube. The length of the corolla tube makes *K. luteola* the species with the longest known corolla tube of all Malagasy taxa in the genus. *Kalanchoe manambolensis* D.-P. Klein, Letsara & Shtein is distinguished from *K. aromatica* H. Perrier and *K. bouvetii* Raym.-Hamet & H. Perrier by its indumentum, its corolla length and proportions, and its leaf shape. Both new species' risk of extinction are preliminarily assessed as "Vulnerable" [VU] using the IUCN Red List Categories and Criteria.

Résumé

KLEIN, D.-P., R. MANGELSDORFF, R. LETSARA, R. SHTEIN & S.E. RODEWALD (2025). Deux nouvelles espèces de *Kalanchoe* (Crassulaceae) de l'ouest de Madagascar. *Candollea* 80: 21–31. En anglais, résumés anglais et français. DOI: <http://dx.doi.org/10.15553/c2025v801a3>

Deux nouvelles espèces de *Kalanchoe* Adans. (Crassulaceae) du Parc National de Tsingy de Bemaraha, à l'ouest de Madagascar, sont décrites et illustrées, complétées par des notes détaillées sur leur habitat, leur écologie et leur position taxonomique. *Kalanchoe luteola* D.-P. Klein, Letsara & Mangelsdorff se distingue des autres représentants de *Kalanchoe* subg. *Kalanchoe* connus de Madagascar par son tube de corolle particulièrement long et jaune crème. La longueur du tube de la corolle fait de *K. luteola* l'espèce avec le plus long tube de corolle connu de tous les taxons malgaches du genre. *Kalanchoe manambolensis* D.-P. Klein, Letsara & Shtein se distingue de *K. aromatica* H. Perrier et *K. bouvetii* Raym.-Hamet & H. Perrier par son indumentum, la longueur et les proportions de sa corolle, et la forme de ses feuilles. Le risque d'extinction des deux nouvelles espèces est provisoirement évalué comme «Vulnérable» [VU] suivant les catégories et critères de la Liste rouge de l'IUCN.

Keywords

CRASSULACEAE – *Kalanchoe* – Madagascar – Melaky – New species – Tsingy de Bemaraha

Addresses of the authors:

DPK: Albrecht Daniel Thier-Institut für Agrar- und Gartenbauwissenschaften, Humboldt-Universität zu Berlin, Albrecht-Thier-Weg 5, 14195 Berlin, Germany. E-mail: david-paul.klein@agrar-hu.berlin.de

RM: Institute of Ecology and Evolution, Goethe University Frankfurt, Frankfurt am Main, Germany.

RL: Parc Botanique et Zoologique de Tsimbazaza, Antananarivo 101, Madagascar.

RS: School of Plant Sciences and Food Security, George S. Wise Faculty of Life Sciences & The Steinhardt Museum of Natural History, Tel Aviv University, Tel Aviv-Yafo, Israel.

SER: Systematik, Biodiversität & Evolution der Pflanzen, Ludwig-Maximilians-Universität München, München. Germany.

Submitted on July 18, 2024 – Accepted on January 23, 2025 – First published online on February 26, 2025
ISSN: 0373-2967 (print), 2235-3658 (online) – Published by the Conservatoire et Jardin botaniques de Genève
Open access article under Creative Commons Attribution Licence (CC BY 4.0)

Introduction

The genus *Kalanchoe* Adans. (Crassulaceae) comprises more than 180 species native to Madagascar, Africa, the Arabian Peninsula, Southeast Asia, and northwest Australia. Several recently published molecular phylogeny studies indicate that the genus originated in Madagascar (e.g. RODEWALD et al., 2025), where more than 80 species are endemic. With a total of 20 new taxa of *Kalanchoe* having been published in the last two decades, the Great Island continues to harbour undescribed taxa, underlining the fact that Madagascar is one of the centres of diversity of the genus. Out of the five subgenera recognised by SMITH (2024) in the genus *Kalanchoe*, i.e., subgenus *Kalanchoe*, subg. *Bryophyllum* (Salisb.) Koord., subg. *Kitchingia* (Baker) Gideon F.Sm. & Figueiredo, subg. *Alatae* (Gideon F.Sm.) Raymond-Hamet ex Gideon F.Sm., and subg. *Calophytia* Desc. emend. Gideon F.Sm., the autonymic subg. *Kalanchoe* is the only one that is not endemic to Madagascar.

In September 2023, an expedition to the Tsingy de Bemaraha National Park was conducted collaboratively by the Ludwig-Maximilians-Universität in Munich, Germany, and the National Herbarium of the Parc Tsimbazaza (TAN) in Antananarivo, Madagascar. The Tsingy de Bemaraha National Park is a karst landscape situated in the seasonally dry west of Madagascar, located in the district of Antsalova in the Melaky region (Fig. 1). Despite its long collection history of botanical exploration dating back to 1911 with Henri Perrier de la Bâthie (1873–1958), this large site remains botanically poorly explored (GOODMAN et al., 2018). Only four species of *Kalanchoe* from this area had been documented prior to the expedition, i.e., *K. bogneri* Rauh (five known collections) and *K. humifica* Desc. (one known collection), as well as the two upright-flowered *K. boisii* Raym.-Hamet & H. Perrier and *K. antennifera* Desc. (both known only by a single collection). Results of the expedition were the rediscovery of *K. boisii*, previously known only from the type material, a new locality for *K. berevoensis* Rebmann, previously known only from Berevo, c. 65 km south of Bekopaka, and the discovery of three potentially new species of *Kalanchoe*. Two of these discoveries are described and illustrated here: *K. luteola* D.-P. Klein, Letsara & Mangelsdorff and *K. manambolensis* D.-P. Klein, Letsara & Shtein.

Taxonomy

Kalanchoe luteola D.-P. Klein, Letsara & Mangelsdorff, **sp. nov.** (Fig. 2).

Holotypus: MADAGASCAR. **Reg. Melaky [Prov. Mahajanga]:** Bekopaka, Tsingy de Bemaraha, [19°01'S 44°46'E], 154 m, 22.IX.2023, Rodewald, Shtein, Letsara & Tsiiverilaza SER 23-006 (TAN!; iso-: G!, M [M-0356649]!, MO!).

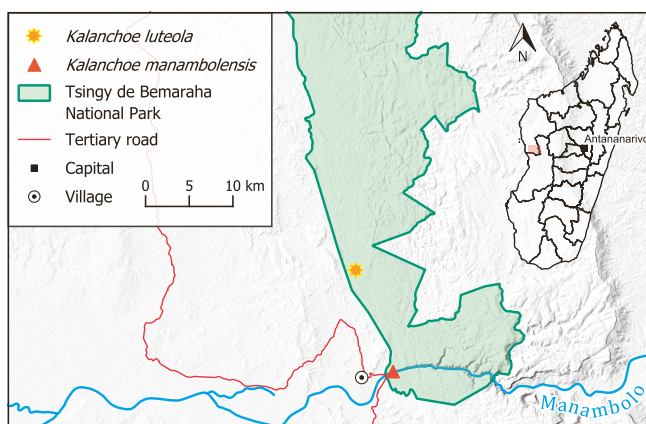


Fig. 1. – Distribution map of the two new *Kalanchoe* Adans. described from the Parc National de Tsingy de Bemaraha. [map resources: <https://earthdata.nasa.gov>, Humanitarian Data Exchange (UN OCHA), OpenStreetMap contributors. Map made with QGIS]

Kalanchoe luteola D.-P. Klein, Letsara & Mangelsdorff is distinguished from other Malagasy *Kalanchoe* species by its particularly long, tubular and salverform, creamy yellow corolla, and by having anthers with an orange globule. Among representatives of *Kalanchoe* subg. *Kalanchoe* from western Madagascar, it further differs by being perennial, glabrous except for the flowering shoot and inflorescence, and by having strictly simple leaves.

Plants perennial, medium-sized succulent herbs, to c. 80 cm high, with creeping, apically leafed main axes, basally developing multiple offshoots and forming clusters of numerous sprouts; flowering shoots up to 78 cm high, glabrous except for the distal half, pedicels, and the abaxial side of sepals, corolla tube and petal lobes. Stems terete, to 5.5 mm in diam., up to 70 cm long with up to 9 pairs of leaves on flowering shoots (less when sterile) and internodes 4–10 cm long, brownish at base, green-reddish in younger parts, flowering shoots contrast with their yellowish-green colour and a very sparse glandular hairy indumentum from the middle half upwards; leaf-scars croissant-shaped. Leaves of vegetative growth simple, decussate, fleshy, dark green to almost black (under shady conditions) or olive green (when exposed to the sun), subsessile to long petiolate; petioles 0.2–1.1(–3.3) cm long; laminas 3–5.2(–26) × 0.3–1.5(–7) cm, narrowly to broadly lanceolate, bases obtuse, apices subacute, margins entire to bluntly sinuate; basal leaves of flowering shoots large, distinctly petiolate, with petioles up to 3 cm long and laminas up to 13 × 3.5 cm, broadly lanceolate, together with shoot mostly brighter coloured than vegetative growing parts; laminas and petioles towards inflorescence continuously more reduced until the leaves are almost filiform and sometimes appear conduplicate. Inflorescences a homocladic thyrsoid, after terminal flower once or twice dichasially ramified, then

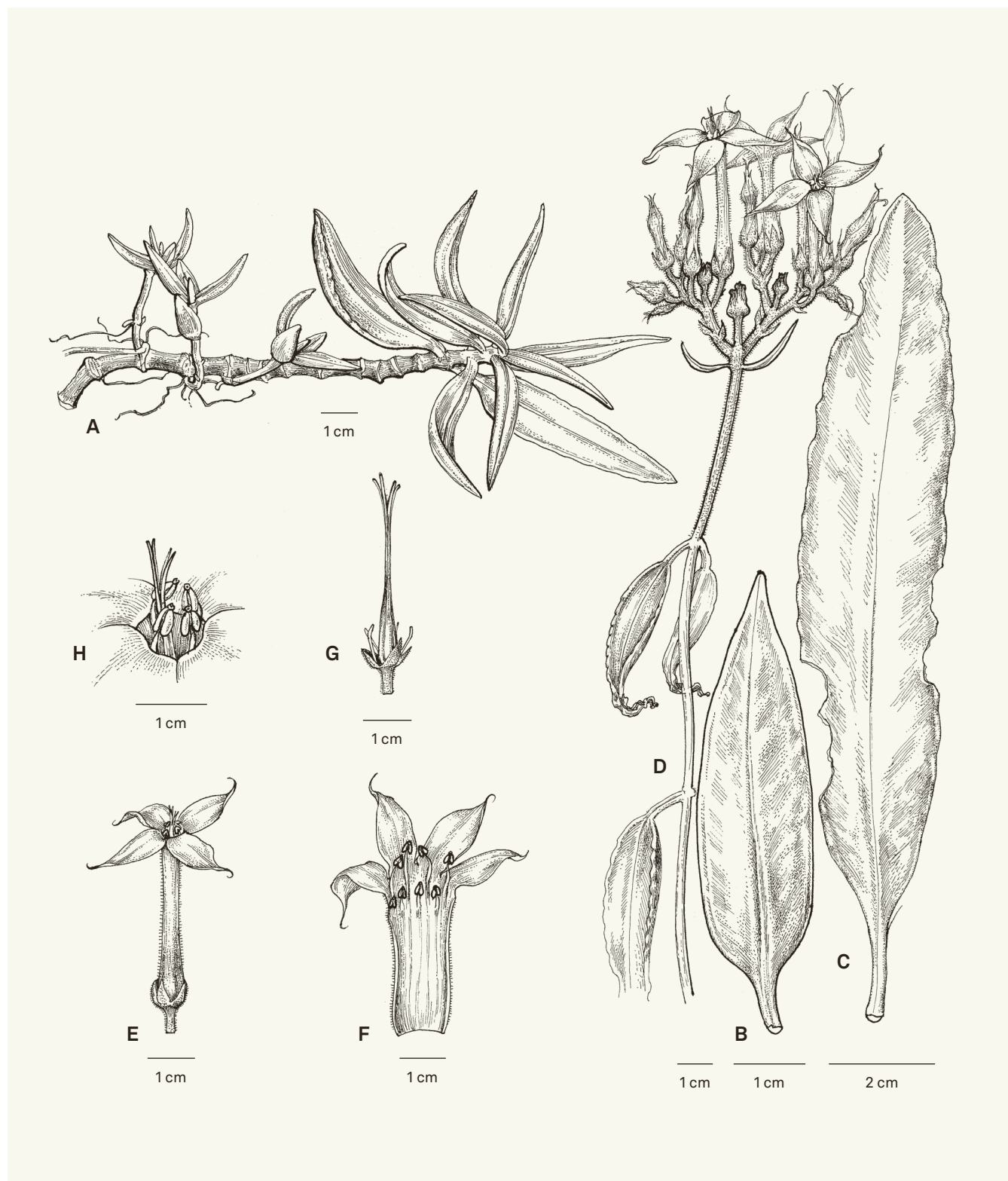


Fig. 2. – *Kalanchoe luteola* D.-P. Klein, Letsara & Mangelsdorff. **A.** Vegetative creeping habit during the dry season; **B.** Short-petiolate and small leaf; **C.** Distinctly petiolate, large leaf in creeping vegetative parts; **D.** Inflorescence on flowering shoot; **E.** Flower; **F.** Dissection of corolla, showing androecium; **G.** Gynoecium; **H.** Anthers of oppositipetalous whorl with anther connectives and styles protruding the tube. [Rodewald et al. SER 23-006, TAN] [Drawings: R.L. Andriamiarisoa]

continuing monochasially by forming 2–4 multiflorous erect cincinni (occasionally 1–2 pairs of partial inflorescences in the upper nodes below the main inflorescence), with up to 52 erect flowers; peduncles short, c. 0.5–4 cm long, occasionally bearing a singular plantlet at post-anthesis; bracts lanceolate, almost filiform, narrowing upwards, c. 3.3–3.5 × 0.15–0.2 cm; bracteoles similar to bracts in shape, 2.8–3.7 × 0.5 mm, densely covered with glandular hairs; pedicels 7–10 × 0.8–1.5 mm, bright green to greenish yellow, erect, densely covered with glandular hairs. *Flowers* erect, c. 35–45 mm long, creamy lemon yellow; sepals 3.7–4.7 × 1.3–1.9 mm, narrowly deltoid, apically acute, appressed to corolla in lower $\frac{3}{4}$, abaxially densely glandular hairy, bright to dark green, fused only at base, forming an indistinct calyx tube 0.7–0.85 mm long; corolla tubes 25–43.5 mm long, \pm quadrangular, 3–4.5 mm in diam. at its widest part, bright green to greenish yellow, abaxially moderately covered with glandular hairs 0.15–0.3 mm long; lobes 11.3–14.5 × 7–9 mm (including arista), abruptly spreading, ovate, tapering towards the apex with an arista 1.3–5.5 mm long, creamy lemon yellow, abaxially sparsely glandular hairy; androecia composed of 8 stamens, arranged in two whorls of 4, anthers of alternipetalous whorl included, anthers of oppositipetalous whorl exserted for 1–2 mm; alternipetalous filaments inserted at $\frac{9}{10}$ of the length of the corolla tube (c. 26–39.5 mm above the base), free for 1–2.5 mm, oppositipetalous filaments inserted at c. 30.5–41.5 mm above the base, free for 2.5–3.3 mm; anthers yellow, ovoid, each theca 1.3 × 0.35 mm, bases emarginate, apices rounded, with an orange-coloured globule; gynoecia with 4 oppositipetalous carpels, adherent in their lower $\frac{3}{4}$, forming ovaries c. 12 mm long, 1.9–2.2 mm in diam., only slightly wider than the styles; styles filamentous, c. 22–28 mm long, in older flowers protruding the corolla tube; nectar scales at base of carpels, linear with bifurcate apex, 8–11.5 × 0.3 mm at apex (0.6 mm at base), thin, white-transparent. *Seeds* 0.7–0.8 × 0.2–0.3 mm, brown, testa tessellate.

Distribution, ecology and phenology. – *Kalanchoe luteola* is known only from a single population in the Tsingy de Bemaraha National Park, in the vicinity of Bekopaka, western Madagascar (Fig. 1). It grows in shallow humus-filled crevices and depressions of jurassic limestone (GOODMAN et al., 2018), very localised in the more exposed parts of the tsingy (Fig. 3A). The most frequently recorded species occurring along with the new species include *Commiphora* sp. (*Burseraceae*), *Cynanchum* sp. (*Apocynaceae*), *Euphorbia viguieri* Denis (*Euphorbiaceae*), *Kalanchoe bogneri* Rauh (*Crassulaceae*), *Orchidaceae* (several species), *Pachypodium menabeum* Leandri, and *P. rosulatum* subsp. *bemarahense* Lüthy & Lavranos (*Apocynaceae*).

Kalanchoe luteola was found flowering in June and fruiting in September.

Conservation status. – Although *Kalanchoe luteola* occurs within the protected Tsingy de Bemaraha National Park on outcrops difficult to access, the taxon consists of a very small population, estimated to 150–200 individuals seen in situ, within a very restricted area of occupancy estimated to be less than 20 km². Despite its protection, the Tsingy de Bemaraha forests are threatened and subject to wild fires (GOODMAN et al., 2018). Due to plausible threats on its habitat, the risk of extinction of *Kalanchoe luteola* is therefore preliminarily assessed as “Vulnerable” [VU D2] in accordance with IUCN Red List Categories and Criteria (IUCN, 2012).

Notes. – *Kalanchoe luteola* is a typical representative of the subgenus *Kalanchoe* native to Madagascar (KLEIN et al., 2021); it is a plant partially covered with a glandular indumentum, which has erect flowers with an indistinct calyx tube, filaments inserted above the middle of the corolla tube, anthers that are either included or only very slightly exserted from the tube, spherical connective glands on their apices, and linear nectar scales. However, while in most representatives of this subgenus the styles are much shorter than the ovaries or equal in length (DESCOINGS, 2006), *K. luteola* possesses styles much longer than the ovaries (see Table 1). *Kalanchoe luteola* is most similar to the other three known species with yellow flowers of subg. *Kalanchoe* from western Madagascar, i.e., *K. antennifera*, *K. boisii* and *K. chapototii* Raym.-Hamet & H. Perrier. These species share erect, yellow to orange flowers that are glandular hairy on their outer parts, long corolla tubes, globules on the apices of their anthers, and long aristate appendages on their petal lobes (Fig. 3). *Kalanchoe luteola* differs from these species by its life cycle, the shape of its leaves, the absence of an indumentum in the vegetative stage, and by the length of its corolla tube (RAYMOND-HAMET & PERRIER DE LA BÂTHIE, 1914, 1915; DESCOINGS, 2004; Table 1). The new species stands out among all other *Kalanchoe* species from Madagascar for having the longest known corolla tube, followed by that of *K. tuberosa* H. Perrier. Its particularly long corolla tube additionally shows great resemblance to species of this subgenus from the African continent, such as *K. latisepala* N.E. Br. (native to Malawi and Mozambique) or *K. marmorata* Baker (native to central and east Africa).

During the vegetative growth, the leaves of *Kalanchoe luteola* show a clear transformation between those formed during the rainy season (distinctly petiolate, large, broadly lanceolate) and those formed during the dry season (sessile, small, narrowly lanceolate) and this transformation is still recognisable during the flowering period by wilting leaves that are still attached to the plant. This adaptation to seasonally strongly varying conditions is known from other species such as *K. boisii* and *K. humifica*. These three species, besides their ontogenically variable vegetative stage coloration peaking in very dark greens, exhibit nearly identical leaf shape transitions,

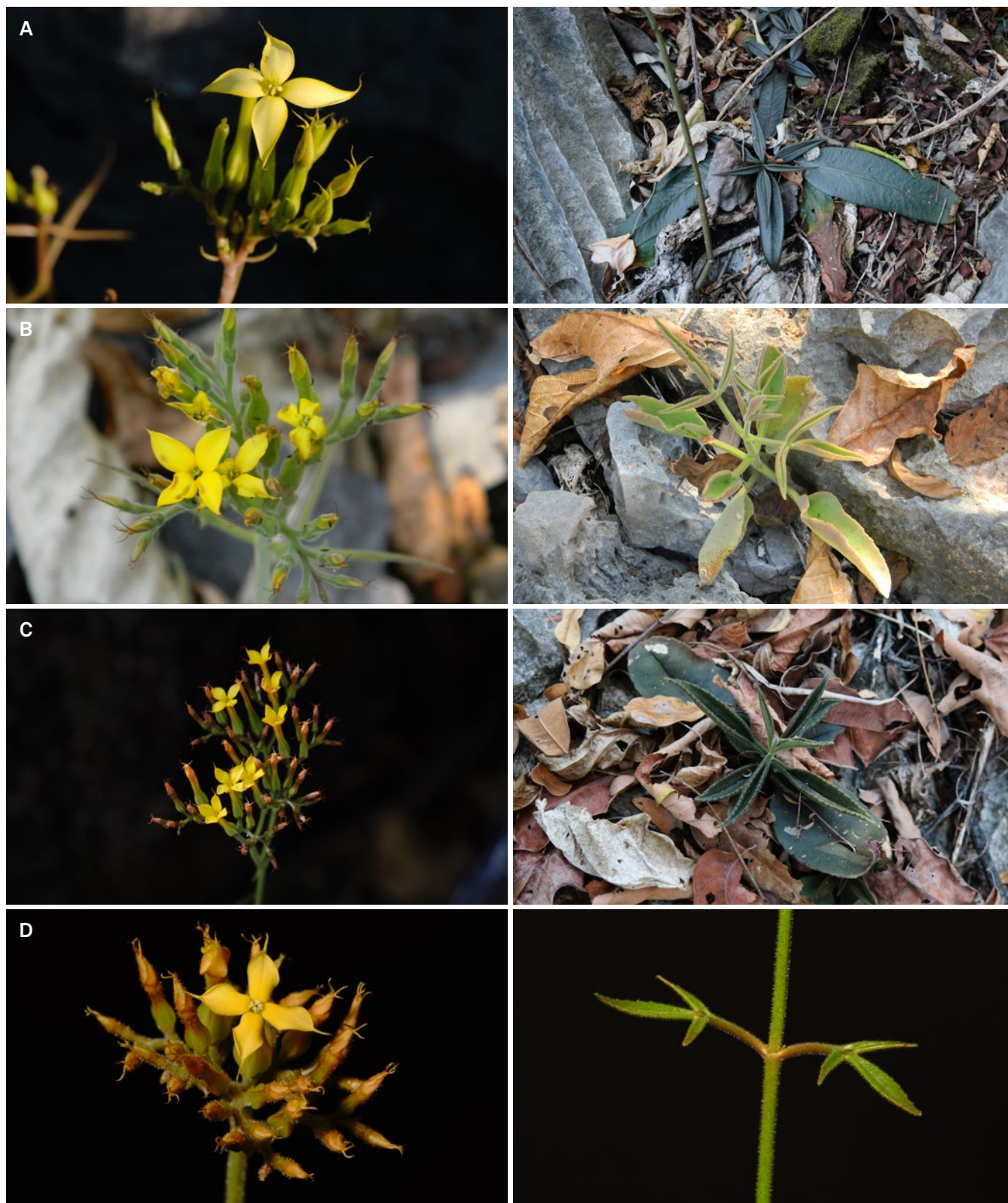


Fig. 3. – Flower morphology (left) and habit (right) of (A) *Kalanchoe luteola* D.-P. Klein, Letsara & Mangelsdorff; (B) *K. chapototii* Raym.-Hamet & H. Perrier; (C) *K. boisii* Raym.-Hamet & H. Perrier; (D) *K. antennifera* Desc. [Photos: A, C, D: D.-P. Klein; B: R. Letsara]

and can easily be confused at certain stages of vegetative development. Such similarities in coloration and leaf shape during ontogenic development may result from convergence due to similar environmental conditions.

Kalanchoe manambolensis D.-P. Klein, Letsara & Shtein, **sp. nov.** (Fig. 4).

Holotypus: MADAGASCAR. **Reg. Melaky [Prov. Mahajanga]:** Bekopaka, Tsingy de Bemaraha, [19°08'S 44°49'E], 65 m, 21.IX.2023, *Roderwald, Shtein, Letsara & Tsiiverilaza SER 23-002* (TAN!; iso-: G!, M [M-0356644]!).

Kalanchoe manambolensis D.-P. Klein, Letsara & Shtein is distinguished from other Malagasy *Kalanchoe* species by having omnidirectional, slightly zygomorphic flowers with a calyx tube being almost twice as long as the sepal lobes, somewhat 4-angled, and appressed to the corolla only in the lower 1/3. It can be distinguished from *K. aromatica* H. Perrier by having corolla lobes much shorter than the tube, and by the stamens only very slightly protruding from the corolla tube. It can be further distinguished from *K. bouvetii* Raym.-Hamet & H. Perrier by its bigger stature, and by having a much shorter corolla tube with petal lobes that are fully recurved.

Plants medium-sized succulent herbs, up to 60 cm tall, sparsely to densely covered with a hairy indumentum on all parts, except fertile parts of the flower (carpels, stamens) and adaxial side of petals; slightly aromatic e.g. on leaves. *Stems* up to 44 cm long, basally woody, bearing up to 7 pairs of leaves, generally unbranched, sprouting only basally, densely covered with an indumentum of simple, c. 0.3–0.6 mm long, transparent and brownish hairs. *Leaves* simple, recumbent to spreading,

bright to dark green, sessile to shortly-petiolate, petioles broad, 0.2–1.5 × 0.3–0.6 cm, laminas up to 17.5 × 5.5 cm, broadly lanceolate, bases attenuate to rarely obtuse, apices subacute, adaxially canaliculate for 2/3 of its length, margins irregularly smoothly crenate to dentate, partially with purple spots, on both sides covered with a dense indumentum of simple, c. 0.3 mm long, simple hairs. *Inflorescence* a panicle, heterocladic thyrsoid producing cincinnate partial inflorescences from up to five nodes below the terminal flower, carrying altogether c. 70 flowers, whereby the more basal partial inflorescences produce increasingly longer peduncles; peduncles c. 2.5 cm; bracts sessile, oblanceolate, apices acute, margins irregularly dentate, 18.9–33.1 × 5.5–11.1 mm, thin-fleshy and bright green, on both sides covered with a dense indumentum of simple, ca. 0.3 mm long, transparent hairs; bracteoles sessile, lanceolate, apices acute, margins entire, 2.1–4.4 × 0.4–1.1 mm, very thin and nearly transparent, on both sides densely covered with a viscid indumentum of glandular, c. 0.3 mm long, transparent hairs; pedicels 3.0–7.5 × 0.75–1.0 mm, slightly widening towards the flower, sparsely covered with a viscid indumentum of glandular, c. 0.3 mm long, transparent hairs. *Flowers* omnidirectional, slightly zygomorphic, c. 18 mm long; sepals green, forming a distinct tube of 6.1–6.6 × 4.1–5.4 mm; sepal lobes much shorter than calyx tube, 3.8–4.2 mm long, deltoid, apically acute; corolla tubes 10.7–10.8 mm long, suburceolate, 2.1–3.0 mm in diam. at its widest part, white-greenish, abaxially sparsely to moderately covered with a viscid indumentum of glandular, c. 0.1–0.2 mm long, transparent hairs; lobes 3.3–3.5 × 2.4–2.6 mm (including mucro), broadly obovate, mucronate, mucro 0.3 mm long, fully recurved, adaxially white with broad pink stripes, glabrous, abaxially whitish-green, sparsely to moderately covered with a viscid indumentum of

Table 1. – Diagnostic characters distinguishing *Kalanchoe luteola* D.-P. Klein, Letsara & Mangelsdorff from *K. antennifera* Desc., *K. boisii* Raym.-Hamet & H. Perrier, and *K. chapototii* Raym.-Hamet & H. Perrier.
[1: RAYMOND-HAMET & PERRIER DE LA BÂTHIE (1915); 2: RAYMOND-HAMET & PERRIER DE LA BÂTHIE (1914); 3: DESCOINGS (2004); 4: in vivo observations]

| | <i>K. luteola</i> | <i>K. chapototii</i> | <i>K. boisii</i> | <i>K. antennifera</i> |
|---|--|---|---|---|
| Habit height [cm] | 78 (incl. inflorescence) | 28–44 [1] | 13.5–27(–180) (incl. inflorescence) [2, 4] | 10–20 [3] |
| Life cycle | perennial | annual [1] | annual [2] | annual [3] |
| Indumentum | glabrous except for flowering shoot and inflorescences | completely covered with a glandular indumentum [1, 4] | completely covered with a glandular indumentum [2, 4] | completely covered with a glandular indumentum [3, 4] |
| Leaves | simple | tri- to 5-partite [1, 4] | simple to tri-partite [2, 4] | simple to tri-partite [3, 4] |
| Length of corolla tube without petal lobes [mm] | 25–43.5 | 19.5–21.8 [1] | 12–13 [2] | 11–12 [3] |
| Length of ovary [mm] | c. 12 | 7.9–11.4 [1] | 3.7–8.6 [2, 4] | 5.8–8 [3, 4] |
| Length of style [mm] | 22–28 | 15.6–18 [1] | 2.5–2.8 [2, 4] | 2.1–4 [3, 4] |
| Colour of petal lobes | creamy yellow | pale to bright yellow [1, 4] | golden yellow to orange [2, 4] | golden yellow to orange [3, 4] |

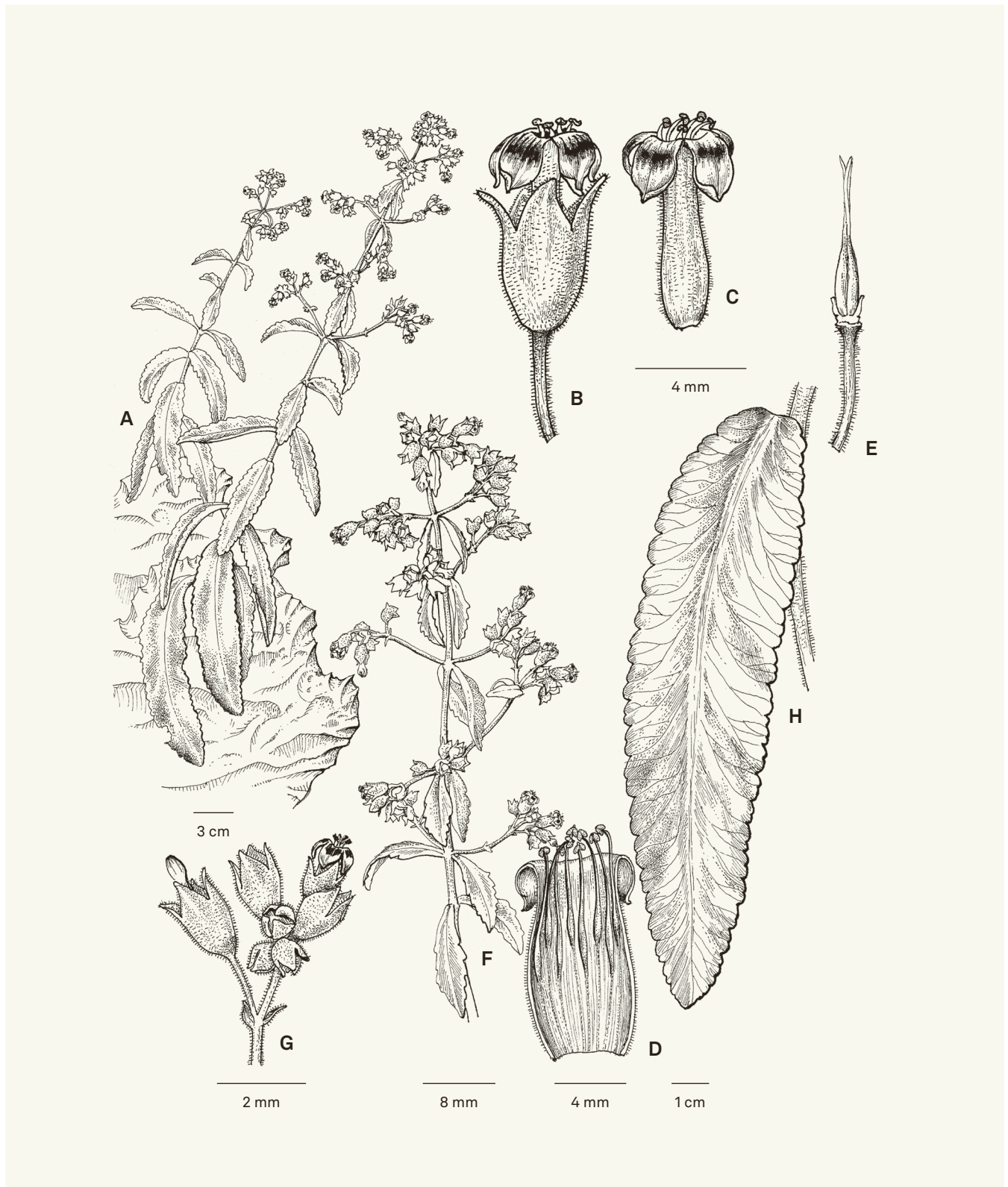


Fig. 4. – *Kalanchoe manambolensis* D.-P. Klein, Letsara & Shtein. **A.** Habit; **B.** Flower; **C.** Flower with calyx removed; **D.** Dissection of corolla, showing androecium; **E.** Gynoecium; **F.** Inflorescence on flowering shoot; **G.** Single inflorescence; **H.** Sessile leaf during flowering season. [Rodewald et al. SER 23-002, TAN] [Drawings: R.L. Andriamiarisoa]



Fig. 5. – Flower morphology (left) and habit (right) of (A) *Kalanchoe manambolensis* D.-P. Klein, Letsara & Shtein; (B) *K. aromatica* var. *aromatica* H. Perrier; (C) white flowered form of *K. bouvetii* Raym.-Hamet & H. Perrier. [Photos: A, B: D.-P. Klein; C: A. Hankey]

glandular, c. 0.1–0.2 mm long hairs; androecia composed of 8 stamens, arranged in two whorls of 4, anthers of alternipetalous whorl exerted for c. 0.5 mm, anthers of oppositipetalous whorl exerted for c. 1.5 mm; lower filaments alternipetalous, inserted at c. 4.0–4.5 mm above the base of the corolla tube, free for 6.7–7.5 mm, upper filaments oppositipetalous, inserted at c. 6 mm, free for 6.5–8.5 mm; anthers violet when young, light brownish at anthesis, with a small transparent globule on the apex; gynoecia composed of 4 oppositipetalous carpels, adherent in their lower half, forming ovaries c. 5.4–5.5 mm long, together reaching a diameter of 1.5–1.6 mm at their broadest point; styles free for all of their length, filamentous, 4–6.8 mm long; nectar scales strap-shaped with bifurcate apex, $1.4\text{--}1.9 \times 0.3\text{--}0.7$ mm, thin, white-transparent, slightly appressed to carpels. *Seeds* $0.6\text{--}0.7 \times 0.2\text{--}0.3$ mm, brown, striate.

Distribution, ecology and phenology. – *Kalanchoe manambolensis* is known only from a single population in the Parc National de Tsingy de Bemaraha National Park, in the vicinity of Bekopaka in western Madagascar, where it grows along with *Aloe bosseri* J.-B. Castillon (*Asphodelaceae*), *K. berevoensis* Rebmann, and *Kalanchoe boisii* Raym.-Hamet & H. Perrier (*Crassulaceae*) near and on cliffs above the banks of the Manambolo river (Fig. 1, 5A).

The new species flowers in June, where it was observed being visited by the bee *Amegilla antimena* (Saussure, 1890) (*Apidae*); fruiting plants were collected in September.

Conservation status. – Although *Kalanchoe manambolensis* occurs within the protected Tsingy de Bemaraha National Park partially on outcrops difficult to access, the new species is known from a small population, estimated to 500–1,000 individuals seen in situ, within a very restricted area of occupancy estimated to be less than 20 km². Despite its protection, the Tsingy de Bemaraha forests are threatened and subject to wild fires (GOODMAN et al., 2018). Due to plausible threats on its habitat, the risk of extinction of *K. manambolensis* is therefore preliminarily assessed as “Vulnerable” [VU D2] in accordance with IUCN Red List Categories and Criteria (IUCN, 2012).

Notes. – *Kalanchoe manambolensis* is morphologically most similar to *K. aromatica*, for which two varieties are described, and *K. bouvetii* (Table 2). The morphological affinity of the latter two species is supported by a recently published molecular phylogenetic analysis of the genus that shows a sister relationship between *K. aromatica* and *K. bouvetii* (RODEWALD et al., 2025). All three species share a small to medium sized habit, omnidirectional flowers with distinct, often zygomorphic corolla tubes, and are at least partially covered by glandular trichomes (Fig. 5). *Kalanchoe manambolensis* can be distinguished from *K. aromatica* var. *aromatica* by having

an indumentum that is glandular only in the inflorescence, strictly simple leaves, sessile to shortly-petiolate leaves, petal lobe/corolla tube ratio being much shorter, colour of the petal lobes being white with red-pink stripes, and by the stamens only very slightly exerted from the corolla tube. It differs from *K. aromatica* var. *brevicorolla* Boiteau by being a larger plant and by having larger flowers with a longer corolla tube, a greenish carpel, and whitish styles. *Kalanchoe manambolensis* can be further distinguished from *K. bouvetii* by the larger stature, by having a much shorter corolla tube, that is only very slightly zygomorphic, and petal lobes fully recurved. Both species share the non-glandular hairs on vegetative parts that are partially glandular in most generative parts. They also share the following characters: simple leaves, sepal lobes shorter than the calyx tube, stamens only very slightly exerted from the corolla tube, and presence of a globule on the apices of the anthers. The latter is a feature otherwise only seen in species of *Kalanchoe* subg. *Kalanchoe*.

Based on herbarium specimens of *Kalanchoe aromatica* and *K. bouvetii*, as well as material that cannot be clearly assigned to either one (here provisionally treated as *K. aff. bouvetii*), the distribution range of these related species (including *K. manambolensis*) extends from the western part (Tsingy de Bemaraha National Park, New Protected Area of Analavelona, and Isalo National Park), to the central part (High Plateau, Kelifely) and presumably to the northern part of Madagascar (Montagne d’Ambre National Park). The presently known disjunct distribution of taxa of this complex can be explained, among other reasons, by the high degree of destruction of the natural ecosystems between the areas of occurrence and the generally low level of scientific collecting activity in non-protected areas.

Acknowledgements

The authors would like to gratefully acknowledge the Ludwig-Maximilians-Universität in Munich, the Parc Botanique et Zoologique Tsimbazaza and the Missouri Botanical Garden for making the expedition possible. Furthermore, they would like to thank Christophe Quenel for sharing his knowledge about the existence of these new taxa. Lova Randrianarimanana, Nary Andriarimalala, and Tsimahory Tsiverilaza are thanked for their support during the field trips to the Tsingy de Bemaraha National Park. Additionally, the authors would like to thank Roger Lala Andriamiarisoa for his outstanding drawings. Finally, the authors thank Urs Eggli for his review and the editors for comments, which both greatly improved an earlier version of this manuscript.

Table 2. – Diagnostic characters distinguishing *K. manambolensis* D.-P. Klein, Letsara & Shtein from *K. aromatica* var. *aromatica* H. Perrier, *K. aromatica* var. *brevicorolla* Boiteau, and *K. bouvetii* Raym.-Hamet & H. Perrier.

[1: PERRIER DE LA BÂTHIE (1923); 2: BOITEAU & ALLORGE-BOITEAU (1995); 3: RAYMOND-HAMET & PERRIER DE LA BÂTHIE (1914); 4: in vivo observations]

| | <i>K. manambolensis</i> | <i>K. aromatica</i> var. <i>aromatica</i> | <i>K. aromatica</i> var. <i>brevicorolla</i> | <i>K. bouvetii</i> |
|--------------------------------------|--|---|---|---|
| Habit height [cm] | 60 (incl. inflorescence) | 30–60 [1] | much smaller than var. <i>aromatica</i> [2] | 14–42 [3] |
| Indumentum | sparsely to densely covered with transparent, simple (stem and leaves) and glandular (inflorescence) hairs | densely covered with long, capitate glandular hairs with a red tip [1, 4] | no information available | during vegetative growth covered with long, simple hairs; flowering stems covered simultaneously with long, simple hairs and short, glandular hairs [3] |
| Leaves | simple | simple to tripartite [1] | simple [2] | simple [3] |
| Leaf margins | smoothly crenate to dentate with purple spots | undulate, serrate-dentate with red margins and purple spots [1, 4] | dentate [2] | crenate to sinuate with brown spots [3] |
| Leaf orientation | decumbent to spreading | spreading to erect [1,4] | no information available | spreading to erect [4] |
| Petiole | sessile to barely petiolate (up to 15 mm long) | petiolate (up to 30 mm long) [4] | no information available | shortly-petiolate (up to 6 mm long) [3] |
| Length of corolla tube [mm] | 10.7–10.8 | 6.5–8 [1] | c. 6 [2] | 11.6–22.5 [3] |
| Length of petal lobes [mm] | 3.3–3.5 | slightly shorter than corolla tube [1] | no information available | 2.9–5.2 [3] |
| Petal lobe/corolla tube ratio | much shorter | about as long | no information available | much shorter |
| Length of calyx tube [mm] | 6.1–6.6 | 4–5 mm [1] | slightly shorter than var. <i>aromatica</i> [2] | 3.7–5.2 [3] |
| Length of sepal lobes [mm] | 3.8–4.2 | slightly shorter than calyx tube [1] | c. 1 [2] | 2.2–3.2 [3] |
| Sepal lobe/calyx tube ratio | shorter | about as long | much shorter | shorter |
| Colour of carpel | green | green [1, 4] | reddish [2] | green [4] |
| Colour of styles | whitish | whitish [1, 4] | reddish [2] | whitish [4] |
| Colour of petal lobes | white with red-pink stripes | greenish-white with dark red to blackish stripes [1, 4] | white with red-pink stripes [2] | white to pale purple, sometimes with purple stripes [3, 4] |
| Stamens exerted | somewhat | strongly [1,4] | no information available | somewhat [4] |

References

- BOITEAU, P. & L. ALLORGE-BOITEAU (1995). *Kalanchoe* (Crassulacées) de Madagascar. *Systématique, écophysiologie et phytochimie*. Karthala, Paris.
- DESCOINGS, B. (2004). *Kalanchoe antenniferi*, Crassulacée africaine nouvelle. *Acta Bot. Gallica* 151: 441–444.
- DESCOINGS, B. (2006). Le genre *Kalanchoe* (Crassulaceae): structure et définition. *J. Bot. Soc. Bot. France* 33: 3–28.
- GOODMAN, S.M., J. RAHERILALAO & S. WOHLHAUSER (2018). Site 82. Bemaraha. In: GOODMAN, S.M. et al. (ed.), *The terrestrial protected areas of Madagascar: Their history, description, and biota: Tome III: L'ouest et le sud de Madagascar – Synthèse*: 1457–1471. Association Vahatra, Antananarivo.
- IUCN (2012). *IUCN Red List Categories and Criteria*. Version 3.1. Ed. 2. IUCN Species Survival Commission, Gland and Cambridge.
- KLEIN, D.-P., R. SHTEIN, L. NUSBAUMER & M.W. CALLMANDER (2021). *Kalanchoe darainensis* (Crassulaceae), a new species from northeastern Madagascar. *Candollea* 76: 117–123. [<https://doi.org/10.15553/c2021v761a12>]
- PERRIER DE LA BÂTHIE, H. (1923). Crassulacées nouvelles malgaches. *Bull. Mus. Natl. Hist. Nat.* 29: 452–455.
- RAYMOND-HAMET, M.M. & H. PERRIER DE LA BÂTHIE (1914). Nouvelle contribution à l'étude des Crassulacées Malgaches. *Ann. Mus. Colon. Marseille*, sér. 3, 2: 113–202.
- RAYMOND-HAMET, M.M. & H. PERRIER DE LA BÂTHIE (1915). Troisième contribution à l'étude des Crassulacées Malgaches. *Ann. Mus. Colon. Marseille*, sér. 3, 3: 63–115.
- RODEWALD, S.E., D.-P. KLEIN, R. SHTEIN, G.F. SMITH, E. JOYCE, D.F. MORALES-BRIONES, S. BERNHARD, R. LETSARA, H. MERTES, P. HÜHN & G. KADEREIT (2025). A new phylogenetic framework for the genus *Kalanchoe* (Crassulaceae) and implications for infrageneric classification. *Ann. Bot. (Oxford)*: mcaf004. [<https://doi.org/10.1093/aob/mcaf004>]
- SMITH, G.F. (2024). An alternative subgeneric classification of *Kalanchoe* (Crassulaceae subfam. Cotyledonoideae) globally: a nomenclatural and taxonomic review, with a new status for *K.* subg. *Pubescentes*. *Phytotaxa* 665: 201–220. [<https://doi.org/10.11646/phytotaxa.665.3.3>]