



Oxymirus cursor and Leptura aurulenta (Coleoptera: Cerambycidae): First Records for Turkey

Authors: Turgut, Semra, Ozdikmen, Huseyin, and Cebeci, Huseyin

Source: Florida Entomologist, 93(4) : 516-518

Published By: Florida Entomological Society

URL: <https://doi.org/10.1653/024.093.0407>

The BioOne Digital Library (<https://bioone.org/>) provides worldwide distribution for more than 580 journals and eBooks from BioOne's community of over 150 nonprofit societies, research institutions, and university presses in the biological, ecological, and environmental sciences. The BioOne Digital Library encompasses the flagship aggregation BioOne Complete (<https://bioone.org/subscribe>), the BioOne Complete Archive (<https://bioone.org/archive>), and the BioOne eBooks program offerings ESA eBook Collection (<https://bioone.org/esa-ebooks>) and CSIRO Publishing BioSelect Collection (<https://bioone.org/csiro-ebooks>).

Your use of this PDF, the BioOne Digital Library, and all posted and associated content indicates your acceptance of BioOne's Terms of Use, available at www.bioone.org/terms-of-use.

Usage of BioOne Digital Library content is strictly limited to personal, educational, and non-commercial use. Commercial inquiries or rights and permissions requests should be directed to the individual publisher as copyright holder.

BioOne is an innovative nonprofit that sees sustainable scholarly publishing as an inherently collaborative enterprise connecting authors, nonprofit publishers, academic institutions, research libraries, and research funders in the common goal of maximizing access to critical research.

OXYMIRUS CURSOR AND LEPTURA AURULENTA (COLEOPTERA: CERAMBYCIDAE): FIRST RECORDS FOR TURKEY

SEMRA TURGUT¹, HUSEYIN OZDIKMEN¹ AND HUSEYIN CEBECI²

¹Gazi University, Science-Arts Faculty, Department of Biology, 06500 Ankara, Turkey

E-mails: (Turgut) semraturgut@gmail.com; (Ozdikmen) ozdikmen@gazi.edu.tr

²Istanbul University, Faculty of Forestry, Department of Forest Entomology and Protection,
34473 Sariyer, İstanbul, Turkey

E-mail: hcebeci@istanbul.edu.tr

ABSTRACT

Two lepturine longicorn beetles, *Oxymirus cursor* (Linnaeus, 1758) and *Leptura aurulenta* Fabricius, 1792 with zoogeographical remarks are recorded for the first time in Turkey.

Key Words: *Oxymirus cursor*, *Leptura aurulenta*, Oxymirini, Lepturini, Lepturinae, Cerambycidae, Coleoptera, Turkey

RESUMEN

Dos lepturine longicorn escarabajos, de *Oxymirus cursor* (Linnaeus, 1758) y *Leptura aurulenta* Fabricius, 1792 con comentarios de zoogeographical son registrados por primera vez a Turquía.

Translation provided by the authors.

Two lepturine longicorn beetles are determined as new records for Turkish fauna. These are *Oxymirus cursor* (Linnaeus, 1758) in the tribe Oxymirini and *Leptura aurulenta* Fabricius, 1792 in the tribe Lepturini. Larvae of both species feed in coniferous and deciduous trees. The present materials were deposited in Istanbul University (Faculty of Forestry) and Gazi University (Department of Biology). The specimens were detected during our examination of the Cerambycidae collection of Faculty of Forestry at Istanbul University.

The small genus *Oxymirus* Mulsant, 1863, that belongs to the tribe Oxymirini Danilevsky, 1997, includes only 2 species as *Oxymirus cursor* (Linnaeus, 1758) and *Oxymirus mirabilis* (Motschulsky, 1838) in the world fauna. It has W-Palaearctic chorotype (European and SW-Asiatic chorotypes) zoogeographically.

It has been represented only by 1 species, *Oxymirus mirabilis* (Motschulsky, 1838), in Turkey (Özdikmen 2010). Additional data on distributions in other regions is given by Sama (1982) and Özdikmen (2010).

The species has been recorded only from NE Anatolia (Ordu prov.: Mesudiye (Sama 1982) and Giresun prov.: Eğribel pass-Kümbet plateau (Özdikmen 2010)) for Turkey. It also occurs in Caucasus (Georgia, Azerbaijan, Armenia) and North Iran. Thus, it has SW-Asiatic (Anatolo-Caucasian + Irano-Caucasian + Irano-Anatolian) chorotype.

The other species *Oxymirus cursor* (Linnaeus), the type species for the genus, has not been reported previously from Turkey (Özdikmen 2010). The present record is the first report for Turkey.

Oxymirus cursor (Linnaeus, 1758) (Fig. 1A)

Original Combination. *Cerambyx cursor* Linnaeus, 1758.

Material Examined. Artvin prov.: Haçila forest, 2 specimens. The material stored in Istanbul University (Faculty of Forestry).

Range

Europe (Spain, France, Italy, Slovenia, Croatia, Bosnia-Herzegovina, Serbia, Macedonia, Bulgaria, Romania, Hungary, Austria, Switzerland, Czechia, Slovakia, Germany, Luxembourg, Belgium, Netherlands, Denmark, Poland, Sweden, Norway, Finland, Estonia, Latvia, Lithuania, Belorussia, Ukraine, Moldova, European Russia), W Siberia.

Chorotype. European or Sibero-European.

Remarks

This species is polyphagous but prefers conifers (*Picea*, *Pinus*, *Abies*, *Larix*, *Fagus*, *Alnus*, *Bet-*

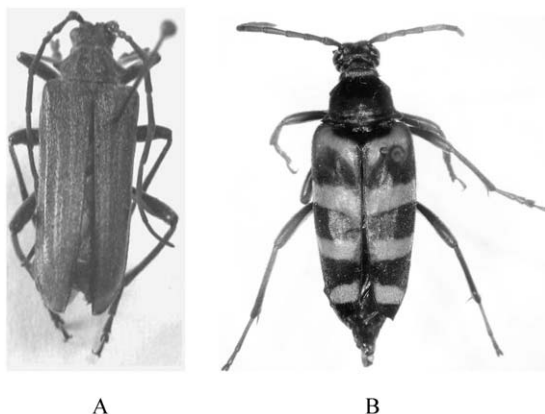


Fig. 1. A. *Oxymirus cursor* (Linnaeus, 1758), B. *Leptura aurulenta* Fabricius, 1792

ula, *Corylus* etc.). Adults are predominantly nocturnal. Larvae are in dead decaying moist wood (Svacha & Danilevsky 1988; Bense 1995; Sama 2002). It is rather variable and has many described aberrations. This is the first record for Turkey and probably it is distributed at least in N Turkey according to present records that constitute the farthest east point in south of the known distribution area of the species.

The other genus *Leptura* that belongs to the tribe Lepturini Latreille, 1804, includes many species in the world fauna. Zoogeographically, it has Holarctic chorotype (Nearctic + Palaearctic chorotypes).

According to Danilevsky (2010), the genus *Leptura* is represented by 3 subgenera as *Leptura* Linnaeus that includes many species, *Macroleptura* Nakane et Ohbayashi that includes only a few species, and *Noona* Sama that includes only the species *Leptura regalis* Bates, 1884.

The genus has been represented only by 2 species of the nominotypical subgenus in Turkey as *Leptura aethiops* Poda, 1761 and *Leptura quadrfasciata* Linnaeus, 1758 until now.

Leptura (*Macroleptura*) *thoracica* (Creutzer, 1799) and *Leptura* (s. str.) *annularis* Fabricius, 1801 were reported only by Lodos (1998) from Turkey without any exact locality, and these records are not confirmed for Turkey now.

Leptura aethiops Poda, 1761 has been recorded only from NE Anatolia (Turkey (Lobanov et al. 1981; Danilevsky & Miroshnikov 1985; Svacha & Danilevsky 1988; Lodos 1998), and Rize prov.: Ilıcaköy and Trabzon prov.: Soğanlı (Tauzin 2000)) for Turkey (Özdikmen 2007). It also occurs in Europe (Spain to European Russia), Siberia, Far East Russia, Kazakhstan, Mongolia, China, Korea, Japan, Caucasus, Transcaucasia, Turkey, Iran. Thus, it has Sibero-European chorotype.

Leptura quadrfasciata Linnaeus, 1758, which is the type species of the genus, has been recorded

by various authors from almost the whole territory of north Turkey (west point to east point) (Özdikmen 2007). It also occurs in Europe (Spain to European Russia and European Kazakhstan), Siberia, Far East Russia, Mongolia, China, Japan, Caucasus, Turkey, Iran. Thus, it also has Sibero-European chorotype.

Leptura aurulenta Fabricius, 1792 has not been reported from Turkey, and this is the first report for Turkey and increases the Turkish *Leptura* to 3.

Leptura aurulenta Fabricius, 1792 (Fig. 1B)

Material Examined

Istanbul prov.: Şile, 2003, 2 specimens. The material stored in Gazi University (Science and Arts Faculty, Department of Biology).

Range

Europe (Portugal, Spain, France, Corsica, Italy, Slovenia, Croatia, Bosnia-Herzegovina, Serbia, Montenegro, Albania, Greece, Bulgaria, Romania, Hungary, Austria, Switzerland, Germany, Luxembourg, Great Britain, Ireland, Czechia, Slovakia, Poland, Lithuania, Ukraine, Moldova, European Russia), North Africa (Algeria), Turkey. Chorotype. W-Palaearctic.

Remarks

This species develops in deciduous trees (*Fagus*, *Quercus*, *Alnus*, *Castanea*, *Betula*, *Juglands*, *Salix*, *Populus*, *Prunus*). Larvae are in dead stumps, trunks or big branches of trees (Svacha & Danilevsky 1988; Bense 1995; Sama 2002). It is rather variable and has many described varieties. It was reported by Sama (2002) as a new record for Greece. The present material is the first record for Turkey and probably it is distributed at least in NW Turkey according to present records that also constitute the farthest east point south of the known distribution area of the species.

REFERENCES CITED

- BENSE, U. 1995. Illustrated Key to the Cerambycidae (excl. Dorcadionini) and Vesperidae of Europe. Margraf Verlag, Germany, 512 pp.
- DANILEVSKY, M. L. 2010. Systematic list of Longicorn Beetles (Cerambycoidea) of the territory of the former USSR. <http://www.cerambycidae.net/> (Accessed 15 March 2010).
- DANILEVSKY, M. L., AND MIROSHNIKOV, A. I. 1985. Timber-Beetles of Caucasus (Coleoptera, Cerambycidae). The Key. Krasnodar, 419 pp.
- LOBANOV, A. L., DANILEVSKY, M. L., AND MURZIN, S. V. 1981. Systematic list of Longicorn beetles (Coleoptera, Cerambycidae) of the USSR. 1. Revue d'Entomologie 60: 784-803 (in Russian).

- LODOS, N. 1998. Entomology of Turkey VI (General, Applied and Faunistic). Ege Ü. Ziraat Fak. Yayınları No: 529, E. Ü. Faculty of Agriculture Press, İzmir, 300 pp.
- OZDİKMEN, H. 2007. The Longicorn Beetles of Turkey (Coleoptera: Cerambycidae) Part I—Black Sea Region. *Munis Entomology & Zoology* 2: 179-422.
- OZDİKMEN, H. 2010. Turkish Oxymirini Danilevsky in Althoff & Danilevsky, 1997 with zoogeographical remarks (Coleoptera: Cerambycidae: Lepturinae). *Munis Entomology & Zoology* 5: 52-59.
- SAMA, G. 1982. Contributo allo studio dei coleotteri Cerambycidae di Grecia e Asia Minore. *Fragmenta Entomologica*, Roma 16: 205-227.
- SAMA, G. 2002. Atlas of the Cerambycidae of Europe and the Mediterranean Area, Volume I, Kabourek, Zlin, 173 pp.
- SVACHA, P., AND DANILEVSKY, M. L. 1988. Cerambycoid larvae of Europe and Soviet Union (Coleoptera, Cerambycoidea). Part III. *Acta Univ. Carolinae* 32: 1-205.
- TAUZIN, P. 2000. Complement a l'inventaire des Coleopteres Cerambycidae de Turquie. *L'Entomologiste* 56: 151-153.