

Heat Treatment of the Adzuki Bean Borer, *Ostrinia scapulalis* Infected with *Wolbachia* gives Rise to Sexually Mosaic Offspring

Authors: Sakamoto, Hironori, Kageyama, Daisuke, Hoshizaki, Sugihiko, and Ishikawa, Yukio

Source: Journal of Insect Science, 8(67) : 1-5

Published By: Entomological Society of America

URL: <https://doi.org/10.1673/031.008.6701>

The BioOne Digital Library (<https://bioone.org/>) provides worldwide distribution for more than 580 journals and eBooks from BioOne's community of over 150 nonprofit societies, research institutions, and university presses in the biological, ecological, and environmental sciences. The BioOne Digital Library encompasses the flagship aggregation BioOne Complete (<https://bioone.org/subscribe>), the BioOne Complete Archive (<https://bioone.org/archive>), and the BioOne eBooks program offerings ESA eBook Collection (<https://bioone.org/esa-ebooks>) and CSIRO Publishing BioSelect Collection (<https://bioone.org/csiro-ebooks>).

Your use of this PDF, the BioOne Digital Library, and all posted and associated content indicates your acceptance of BioOne's Terms of Use, available at www.bioone.org/terms-of-use.

Usage of BioOne Digital Library content is strictly limited to personal, educational, and non-commercial use. Commercial inquiries or rights and permissions requests should be directed to the individual publisher as copyright holder.

BioOne is an innovative nonprofit that sees sustainable scholarly publishing as an inherently collaborative enterprise connecting authors, nonprofit publishers, academic institutions, research libraries, and research funders in the common goal of maximizing access to critical research.



Heat treatment of the adzuki bean borer, *Ostrinia scapularis* infected with *Wolbachia* gives rise to sexually mosaic offspring

Hironori Sakamoto^{1,a}, Daisuke Kageyama^{2,b}, Sugihiko Hoshizaki^{1,c} and Yukio Ishikawa^{1,d}

¹ Graduate School of Agricultural and Life Sciences, The University of Tokyo, Yayoi 1-1-1, Bunkyo-ku, Tokyo 113-8657, Japan

² National Institute of Agrobiological Sciences, Owashi 1-2, Tsukuba, Ibaraki 305-8634, Japan

Abstract

A maternally inherited intracellular bacterium, *Wolbachia*, causes reproductive alterations in its arthropod hosts. In the adzuki bean borer, *Ostrinia scapularis* (Walker) (Lepidoptera: Crambidae), naturally-occurring *Wolbachia* selectively kills male progeny. This *Wolbachia* strain appears to have a feminizing effect, since antibiotic treatment of infected female moths gives rise to male progeny with sexually mosaic phenotypes. It is proposed that male-specific death occurs through the feminizing effect, and sexual mosaics are produced when this effect is incompletely exerted. Here we examined whether the treatment of infected female moths with high temperatures (34°C, 36°C, or 38°C), which is likely to suppress the activity of *Wolbachia*, induces sexually mosaic progeny. It was found that eggs laid within 24 h after treatment of *Wolbachia*-infected mothers at 36°C gave rise to seven sexual mosaics along with 54 normal females. The time lag between treatment and the appearance of mosaic progeny was much shorter with heat treatment than antibiotic treatment, suggesting that heat treatment is more useful for spotting developmental timing when *Wolbachia* exerts its feminizing effect on *O. scapularis* embryos.

Keywords: feminization, male killing, sex-specific lethality

Correspondence: ^ahirowol@yahoo.co.jp, ^bkagymad@affrc.go.jp, ^cahossy@mail.ecc.u-tokyo.ac.jp, ^dayucky@mail.ecc.u-tokyo.ac.jp

Received: 25 July 2007 | **Accepted:** 11 December 2007 | **Published:** 31 October 2008

Copyright: This is an open access paper. We use the Creative Commons Attribution 3.0 license that permits unrestricted use, provided that the paper is properly attributed.

ISSN: 1536-2442 | Volume 8, Number 67

Cite this paper as:

Sakamoto H, Kageyama D, Hoshizaki S, Ishikawa Y. 2008. Heat treatment of the adzuki bean borer, *Ostrinia scapularis* infected with *Wolbachia* gives rise to sexually mosaic offspring. 5pp. *Journal of Insect Science* 8:67, available online: insectscience.org/8.67

Introduction

A group of intracellular bacteria belonging to the genus *Wolbachia* (Class Alpha-proteobacteria) have been isolated from a wide variety of arthropods and filarial nematodes (Werren, 1997; Bourtzis and O'Neill, 1998; Stouthamer et al. 1999). Being transmitted exclusively from mothers to offspring, *Wolbachia* increases its fitness by altering the reproductive systems of the host through various means such as cytoplasmic incompatibility, male killing, feminization, induction of parthenogenesis, and others (Werren, 1997; Stouthamer et al. 1999; Charlat et al. 2003).

In the adzuki bean borer, *Ostrinia scapularis* (Lepidoptera: Crambidae), naturally-occurring *Wolbachia* selectively kill male progeny during embryonic and larval development (Kageyama and Traut, 2004). Interestingly, when *Wolbachia*-infected female moths were treated with tetracycline prior to oviposition, they often produced genetically male moths with sexually mosaic phenotypes (Kageyama et al. 2003a; Kageyama and Traut, 2004). This finding demonstrates that the *Wolbachia* strain in *O. scapularis* has a feminizing effect on genetic males. Kageyama and Traut (2004) proposed that the feminizing effect underlies the death of *Wolbachia*-infected males, and sexual mosaics are produced when this effect is incompletely exerted.

It is known that in various insect species reproductive manipulation such as cytoplasmic incompatibility, male killing, and parthenogenesis caused by *Wolbachia* can be suppressed by high temperatures, either through direct suppression of the activity of *Wolbachia*, or through the suppression of proliferation of *Wolbachia* in host cells (Trpis et al. 1981; Hoffman et al. 1986; Pintureau et al. 1999; Hurst et al. 2000, 2001). Here we examined whether high temperature treatments of *O. scapularis* female adults infected with *Wolbachia* can induce the production of sexually mosaic moths.

Materials and Methods

Insects

Adult females of *O. scapularis* were collected at Matsudo, Chiba, Japan, and individually allowed to lay eggs in the laboratory. *Wolbachia* infection in collected females was checked using a diagnostic polymerase chain reaction (PCR) assay using primers specific for *Wolbachia* 16S ribosomal DNA (O'Neill et al. 1992) as described previously (Kageyama et al. 2003b). The offspring of single, *Wolbachia*-infected and uninfected females were reared to adults on a commercial artificial diet (Silkmate™ 2M, Nosan Corp, www.nosan.com) at 25°C, under a 16L: 8D. These insects were used to establish a *Wolbachia*-infected matriline (MD0014; Kageyama and Traut, 2004) and two uninfected matrilines (MD2161 and MD2164).

Heat treatment

Thirty *Wolbachia*-infected or -uninfected female moths were allowed to mate with 30 uninfected males in a screen cage (20 cm x 20 cm x 20 cm) for two days. After males were removed, the cages were transferred into incubators maintained at 25°C (control), 34°C, 36°C or 38°C for two days, and survival rates were then examined. Surviving female moths were individually transferred into plastic cups (10 cm in diameter, 4.5 cm in depth) to allow oviposition at 25°C under 16L: 8D. Eggs were collected daily, and larvae were reared by broods and oviposition dates. The pupae produced were sexed by examining the morphology of the abdominal terminal segment and midleg (males have larger mid-tibiae than females) under a stereomicroscope, and then maintained separately in plastic cups with a piece of moistened filter paper.

Results

The matriline MD0014 exhibited the all-female trait, which was shown to be due to the *Wolbachia*-induced male killing (Kageyama and Traut, 2004). In matrilines MD2161 and MD2164, sex ratios did not significantly deviate from 1:1.

The survival rates of females after heat treatment decreased as temperature rose (Table 1). No significant difference in survival rates were detected between infected and uninfected females at any temperature examined ($P > 0.05$, $2 \times 2\chi^2$ test).

Table 1. Survival rates of female *Ostrinia scapularis* after heat treatment

Exposed temperature	Survival rate
Infected	
25°C	0.90 (N = 60)
34°C	0.70 (N = 60)
36°C	0.28 (N = 60)
38°C	0.00 (N = 60)
Uninfected	
25°C	0.85 (N = 60)
34°C	0.65 (N = 60)
36°C	0.33 (N = 60)
38°C	0.00 (N = 60)

No effect of high temperature treatments on the sex ratio or sex differentiation was observed in the progeny of uninfected mothers; they consistently developed to normal males and females at nearly 1:1 ratio (Table 2). In contrast, progeny of the infected mothers treated at 25°C and 34°C developed to only female adults (Table 2). Among the progeny of infected mothers treated at 36°C,

seven of 97 individuals examined showed sexually mosaic phenotypes at the pupal stage (Table 2; Figure 1A). The seven mosaic pupae had male-like mid-tibia and female-like morphology in the last abdominal segment (Figure 1A). All seven mosaic pupae were derived from eggs laid within 24 h after the completion of heat treatment. Two of the mosaic pupae developed to adults, and the other five died. The wings of the two emerged moths, although curled, exhibited wing mark/color patterns characteristic of the sexual mosaics (Figure 1D). The curled wings were observed only in sexual mosaics. Mosaic patterns were also found in the coloration of the dorsal abdomen of the two individuals (Figure 1D). Except for these sexual mosaics, all progeny produced by *Wolbachia*-infected females consisted of normal females. Almost all the offspring of infected mothers maintained at 25°C (control) developed to adults, > 0.97 in most cases.

Table 2. Sex ratio (female: male) of the progeny of *Wolbachia*-infected and -uninfected *Ostrinia scapularis* collected daily as eggs after heat treatment.

Exposed temperature	Eggs collected on		
	Day 1	Day 2	Day 3
Infected			
25°C (control) ^a	129:0	111:0	69:0
34°C ^b	85:0	70:0	70:0
36°C ^c	54:0 (+7 ^d)	36:0	-
Uninfected			
25°C (control) ^e	96:90	80:78	50:37
34°C ^f	66:78	54:54	42:31
36°C ^g	78:72	40:42	9:7

^aSum of 4 broods.
^bSum of 4 broods (two females died by day 4).
^cSum of 2 broods (two females died by day 3).
^dSeven sexual mosaics appeared at the pupal stage. These mosaics were excluded from the sex-ratio calculation.
^eSum of 4 broods (one female died by day 3).
^fSum of 4 broods (one female died by day 2 and two other females died by day 4).
^gSum of 4 broods (three females died by day 3 and another died by day 4).

Discussion

In the present study, sexually mosaic progeny were produced from *Wolbachia*-infected *O. scapularis* females treated with a high temperature (36°C) prior to oviposition. Thus, two different treatments of *Wolbachia*-infected *O. scapularis* female moths, i.e., high temperature and oral administration of antibiotics (Kageyama et al. 2003a), have been shown to induce sexually mosaic moths. The present finding confirmed that *Wolbachia* in *O. scapularis* has the potential to interfere with the host’s sex determination pathway.

Heat and antibiotic treatments of infected *O. scapularis* females showed a clear difference in the induction pattern of sexually mosaic moths, as follows. In antibiotic treatment, sexual mosaics developed from eggs laid ≥ 4 days after treatment in *O. scapularis* (Kageyama et al. 2003a; Kageyama and Traut, 2004), and ≥ 3 days after treatment in the sister species *O. furnacalis* (Sakamoto et al. 2007). Meanwhile, the effect of heat treatment appeared promptly and transiently; sexual mosaics developed from eggs laid < 24 h after treatment, but no sexual mosaics developed from eggs laid > 24 h after treatment. It is possible that orally administered antibiotics take longer to show an effect because they must be absorbed through the gut and then transported to the reproductive tissue. The transience of the effect of high temperature suggests that the occurrence of sexual mosaics is a consequence of direct suppression of the activity of *Wolbachia*, rather than the consequence of an indirect effect such as a decrease in *Wolbachia* density.

Regarding the generation of sexually mosaic moths, we hypothesize that *Wolbachia* interferes with key step(s) of sex determination during the egg/embryonic development of individuals with the male genotype (ZZ). Considering the promptness and transience of the effect, heat treatment would be more useful than antibiotic treatment for spotting crucial time events when *Wolbachia* interferes with the sex determination step(s) during development. Heat treatments at various times during egg/embryonic development would clarify the crucial timing of *Wolbachia* action against normal sex determination in genetic males of *O. scapularis*. Such knowledge may give insights into the mechanism of *Wolbachia*-induced feminization in arthropods.

Finally, only two moths successfully emerged from seven sexually mosaic pupae. The death of five mosaic pupae might be attributable to the delayed expression of male killing; heat treatment probably decreased the *Wolbachia* density to a level at which it could not kill male hosts during the larval stage, but *Wolbachia* density may have subsequently recovered to a level sufficient to kill male hosts at the pupal stage. It is known in the butterfly *Hypolimnys bolina* that tetracycline treatment of females leads to the attenuated and delayed expression of male killing (Mitsuhashi et al. 2004; Charlat et al. 2007). In *H. bolina*, *Wolbachia* has the ability to kill males during the larval stage through bacterial activity (Charlat et al. 2007).

Acknowledgments

We thank Dr. T. Takanashi and Dr. S. Ohno for their kind help in collecting *O. scapularis*, and Prof. S. Kikuyama and Prof. S. Tatsuki for helpful advice. This study was supported in part by Grants-in-Aid for Scientific Research (Nos. 15780038 and 16208005) from the Japan Society for the Promotion of Science (JSPS).

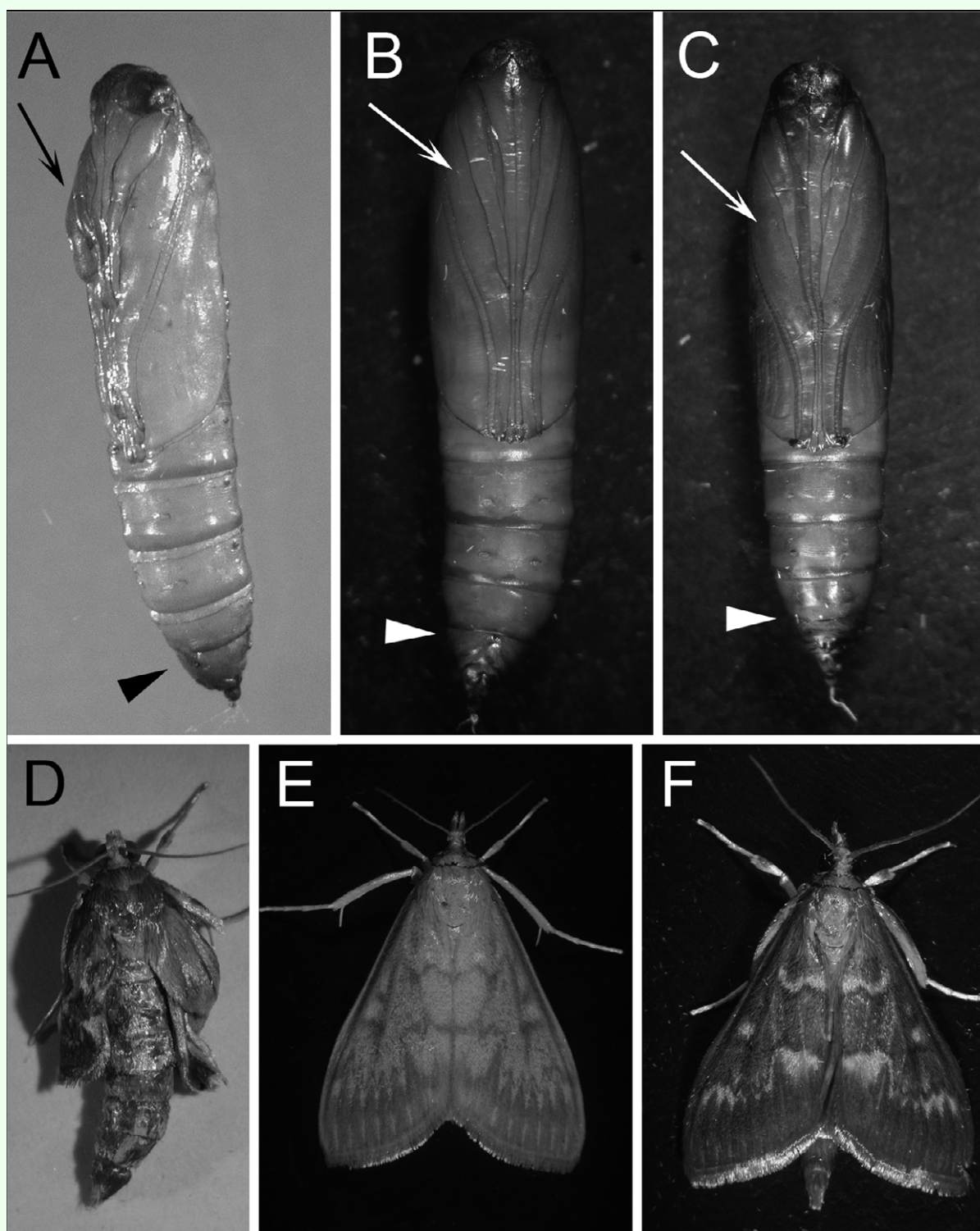


Figure 1. Morphological features of the pupae (A-C) and adults (D-F) of *Ostrinia scapulalis*. A and D: individuals generated by heat treatment. B and E: normal females. C and F: normal males. Sexually dimorphic mid-tibiae are indicated by arrows. Sexually dimorphic morphologies in the last abdominal segment are indicated by arrowheads. The pupa in panel (A) has male-like mid-tibiae and female-like abdominal morphology. Female adult wings are light cream while male adult wings are dark brown. The adult in panel (D) is male-like on its left wing but more female-like on its right wing. A mosaic pattern is also recognizable on the dorsal abdomen.

References

- Bourtzis K, O'Neill S. 1998. *Wolbachia* infections and arthropod reproduction—*Wolbachia* can cause cytoplasmic incompatibility, parthenogenesis, and feminization in many arthropods. *Bioscience* 48: 287-293.
- Charlat S, Davies N, Roderick GK, Hurst GDD. 2007. Disrupting the timing of *Wolbachia*-induced male-killing. *Biology Letters* 3: 154-156.
- Charlat S, Hurst GDD, Mercot H. 2003. Evolutionary consequences of *Wolbachia* infections. *Trends in Genetics* 19: 217-223.
- Hoffmann AA, Turelli M, Simms GM. 1986. Unidirectional incompatibility between populations of *Drosophila simulans*. *Evolution* 40: 692-701.
- Hurst GDD, Jiggins FM, Robinson SJW. 2001. What causes inefficient transmission of male-killing *Wolbachia* in *Drosophila*? *Heredity* 87: 220-226.
- Hurst GDD, Johnson AP, Van der Schulenburg JHG, Fuyama Y. 2000. Male-killing *Wolbachia* in *Drosophila*: a temperature-sensitive trait with a threshold bacterial density. *Genetics* 156: 699-709.
- Kageyama D, Nishimura G, Hoshizaki S, Ishikawa Y. 2003a. Sexual mosaics induced by tetracycline treatment in the *Wolbachia*-infected adzuki bean borer, *Ostrinia scapularis*. *Genome* 46: 983-989.
- Kageyama D, Ohno S, Hoshizaki S, Ishikawa Y. 2003b. Two kinds of sex ratio distorters in a moth, *Ostrinia scapularis*. *Genome* 46: 974-982.
- Kageyama D, Traut W. 2004. Opposite sex-specific effects of *Wolbachia* and interference with the sex determination of its host *Ostrinia scapularis*. *Proceedings of the Royal Society of London Series B, Biological Sciences* 271: 251-258.
- Mitsuhashi W, Fukuda H, Nicho K, Murakami R. 2004. Male-killing *Wolbachia* in the butterfly *Hypolimnas bolina*. *Entomologia Experimentalis et Applicata* 112: 57-64.
- O'Neill SL, Giordano R, Colbert AME, Karr TLZ, Robertson HM. 1992. 16S rRNA phylogenetic analysis of the bacterial endosymbionts associated with cytoplasmic incompatibility in insects. *Proceedings of the National Academy of Sciences USA* 89: 2699-2702.
- Pintureau B, Chapelle L, Delobel B. 1999. Effect of repeated thermic and antibiotic treatments on a *Trichogramma* (Hym., Trichogrammatidae) symbiont. *Journal of Applied Entomology* 123: 473-483.
- Sakamoto H, Kageyama D, Hoshizaki S, Ishikawa Y. 2007. Sex-specific death in the Asian corn borer moth (*Ostrinia furnacalis*) infected with *Wolbachia* occurs across larval development.