

Cloning of Cyclin E cDNA of the Sea Urchin, *Hemicentrotus pulcherrimus*

Authors: Kurokawa, Daisuke, Akasaka, Koji, Iwatsunaga-Nakatsubo, Keiko, and Shimada, Hiraku

Source: Zoological Science, 14(5) : 791-794

Published By: Zoological Society of Japan

URL: <https://doi.org/10.2108/zsj.14.791>

The BioOne Digital Library (<https://bioone.org/>) provides worldwide distribution for more than 580 journals and eBooks from BioOne's community of over 150 nonprofit societies, research institutions, and university presses in the biological, ecological, and environmental sciences. The BioOne Digital Library encompasses the flagship aggregation BioOne Complete (<https://bioone.org/subscribe>), the BioOne Complete Archive (<https://bioone.org/archive>), and the BioOne eBooks program offerings ESA eBook Collection (<https://bioone.org/esa-ebooks>) and CSIRO Publishing BioSelect Collection (<https://bioone.org/csiro-ebooks>).

Your use of this PDF, the BioOne Digital Library, and all posted and associated content indicates your acceptance of BioOne's Terms of Use, available at www.bioone.org/terms-of-use.

Usage of BioOne Digital Library content is strictly limited to personal, educational, and non-commercial use. Commercial inquiries or rights and permissions requests should be directed to the individual publisher as copyright holder.

BioOne is an innovative nonprofit that sees sustainable scholarly publishing as an inherently collaborative enterprise connecting authors, nonprofit publishers, academic institutions, research libraries, and research funders in the common goal of maximizing access to critical research.

Cloning of Cyclin E cDNA of the Sea Urchin, *Hemicentrotus pulcherrimus*

Daisuke Kurokawa, Koji Akasaka, Keiko Mitsunaga-Nakatsubo
and Hiraku Shimada*

Laboratory of Molecular Genetics, Graduate Department of Gene Science,
Faculty of Science, Hiroshima University, Higashi-Hiroshima 739, Japan

ABSTRACT—cDNA encoding maternal cyclin E (HpCycE) has been cloned from the oocyte cDNA library of the sea urchin, *Hemicentrotus pulcherrimus*, by differential screening with a cDNA probe covering the total poly(A)⁺ RNAs of 16 cell-stage embryos and gastrulae. In this communication we describe similarity of amino acid sequences between HpCycE and those of cyclin E from other organisms and maternal origin of HpCycE. The amino acid sequence deduced from the nucleotide sequence of HpCycE cDNA is highly similar to those of human, rat, chicken, *Xenopus*, zebrafish and *Drosophila*, while its similarity to other cyclins is much lower. A gene for HpCycE exists as a single copy in the genome of *H. pulcherrimus*. Northern blotting revealed that the mRNA for HpCycE is maintained at a high level up to the morula stage and thereafter declines.

INTRODUCTION

Cyclins are a group of proteins required for the correct progression of the cell cycle in various organisms. Cyclin E was first isolated from human cells as the cDNA that can restore the yeast CLN mutation (Lew *et al.*, 1991). The amount of human cyclin E is maximal in the late G1 and early S phases, and the cyclin E-cdk2 complex regulates the G1-S transition (Dulic *et al.*, 1992; Koff *et al.*, 1992; Jackson *et al.*, 1995), and transforming-growth-factor- β (TGF- β) prevents the stable assemblage of the cyclin E-cdk2 complex (Koff *et al.*, 1993). In sea urchins, from which cyclin was first detected as a protein that appears and disappears in a cell cycle-dependent manner (Evans *et al.*, 1983), only cDNAs for G2 cyclins have been cloned thus far (Pines and Hunt, 1987), while none of the G1 cyclins such as cyclins C, D and E has been cloned yet.

As part of our efforts to isolate and classify the maternal cDNAs of the sea urchin, we screened the oocyte cDNA library of *Hemicentrotus pulcherrimus* with cDNA probes that cover the total poly(A)⁺ RNAs of 16 cell-stage and gastrula embryos, and isolated cDNA clones that are present in the 16 cell-stage embryo but absent from the gastrula. By the cloning and nucleotide sequencing of these cDNAs, we identified cDNAs encoding cyclins A, B and E.

Since little information is available regarding echinodermal cyclin E, we report here the nucleotide sequence of the *HpCyclinE* cDNA as well as the pattern of its ontogenic accumulation.

MATERIALS AND METHODS

Differential screening of oocyte cDNA library

The total RNA was extracted by the method of Chomczynski and Sacchi (1987) from the 16-cell embryos and from gastrulae of the sea urchin *Hemicentrotus pulcherrimus*, and poly(A)⁺ RNA was isolated from the total RNA using Oligotex-dT30 (Roche, Tokyo, Japan). Digoxigenin (DIG)-labelled cDNA probes representing total poly(A)⁺ RNA of 16-cell embryos and gastrulae were prepared by reverse transcription with Superscript II (Gibco BRL, Rockville, MD, USA). Duplicate filters of the λ gt11 oocyte cDNA library (a gift from Dr. I. Mabuchi of University of Tokyo) were probed with DIG-labelled total cDNA of 16-cell embryo or of gastrula, and 68 plaques with positive signals for the 16-cell probe but negative for the gastrula probe were selected by three rounds of screening. cDNAs isolated from these plaques were amplified by polymerase chain reaction (PCR) with the λ gt11 primer (TaKaRa, Otsu, Japan). Amplified cDNA fragments were digested with *Eco*RI and inserted into pBluescript SK[−] (Stratagene, La Jolla, CA, USA). The nucleotide sequences of the subcloned fragments were determined by the chain termination method (ABI PRISM[™] Dye Terminator Cycle Sequencing Ready Reaction Kit, Perkin-Elmer, Foster City, CA, USA) with the pBluescript SK[−] reverse primer or with the M13-20 primer.

Cloning of *HpCycE* cDNA

Using as a probe the HpCycE fragment that was excised from *HpCycE* clone 1, the cDNA library of unfertilized eggs constructed in λ gt10 vector was screened for a full-length *HpCycE* cDNA. Positive clones were rescued into pBluescript SK[−], and the nucleotide sequences were determined by exonuclease III deletion followed by the chain termination procedure using the kit described above.

Genomic Southern hybridization

DNA isolated from the sea urchin sperm was digested by *Eco*RI, *Sac*I and *Pst*II. The digests were electrophoresed in 0.7% agarose gel, transferred to a nylon membrane (NY13N, Schleicher & Schuell, Dassel, Germany), and hybridized to the *Sac*I-digested fragment of *HpCycE* clone 1.

* Corresponding author: Tel. +81-824-24-7446;
FAX. +81-824-24-7498.

GCCTAAGTGAATCATCTGAGTACGATACAAATCAGTCGAACATAAATCATTTTTTCTCAATTCGAGCCAAATGTTCAAAGATTGCAT 90
TAGTTCATAGAAATATGATATATTTTTCTTTGATTCAACTTCGAAATATTACCTTATACAGCTCATTTTACGCGTTTGGGTGTAACAA 180
TCGTATGTCGTTTGGATATTGGCGGTAAAGACTAAACTCCCGCAGTGAAGTACTTCGCTCACTGGACGATCTCTTACGCGCAGCTGCTGT 270
GTAATGTTTGGGTAGCTCTCTCGCTATACAGCTAGCTTTTCGCGGGGAAATGACGGAGTGAAGCAGTATATCTAGAACTTGGCGAGTAGTGCTG 360
CAGAAGCAGCTAGTAAATCGGTAAATTTGCTGCTCTAATTTCAAAATTCAGCCAGGAAGATTCCAAGACTATAGATATCTACGCGAA 450
GCCAAGACGATTTTCGCGTTTCAGCAGAAGATCTACTACTAGAACTGTGTGAGAAATCTGTGAAAGACAGGACAAGGCAAGGAAATAT 540
M 1
GTCCTGGAGGAGTGGTTCGTTTGAATCAAGACAGGACAATCAGCCGTTAAACAGAGTGCATTTTCAGACGAAAAATAATCTTCCAATGTGTAC 630
S R R S G R L Q S R Q D N Q P L T E C I S D E N N L P M C T 31
AAGAAAGAGGAAAACACGAGAACAGGACAGCTGGTGTATCAAAAGCTGAGGAAGTTCAAAGGAGAAGACAGCAATTTACAGATAGAGAA 720
R K R K T R E Q D T T G V S K A E E V Q R R R Q Q F T I E N 61
CCGATGGGTACCGATCTCTGAGTCATCGTCAATAGAAACATCTCTTCTAGTTTCCAATGCAAAACCAAGGAACCATCAACTCCTTCAAGA 810
R W V P I S E S S S I E T S L L V P M Q T K E P S T P S E E 91
ACTTATGGACACTGCCAATTTGGGTACATTTCCGTAACCTGTTTCCAGCCCATGTATCAGACAGAGCTTCACCCATCCCTTTGCTACACTG 900
L M D T A N W V T F R N L F P A H V S D R A S P I P L L H W 121
GGATGATCTTCCAGAAATGAGCTATAATGACAAGGAAGGAGCCCTCTGTCGAAAGGAGCATGATTGTCTAAAGAGCATCCATCGTT 990
D D L P E V W T I M T R K E A L C P R K H D C L K S H P S L 151
GGGAGAGAGAATGAGAGCTCTTCTAGATTGGCTTATTGAAGTGTGTGAAGTTTATAGGTTACACAGAGAATCAATTTTCTAGCAGC 1080
G E R M R A I L L D W L I E V C E V Y R L H R E S F Y L A A 181
AGACTTTTGTAGTAGTATCTAGCAGCCAAAGAAAACGTTCCAAGACAAAACCTTCAGCTCATTGGGATCACATCATTATTGTTGCTGTC 1170
D F V D R Y L A A K E N V P K T K L Q L I G I T S L F V A A 211
AAAGTTAGAAGAAATCTACCCACCAAGCTGCATGAAATTTGCCCTATGTAACGGAGGAGCATGCACAGATGATCAGATCCTAGATCAAGA 1260
K L E E I Y P P K L H E F A Y V T D G A C T D D Q I L D Q E 241
ACTCATCTGTGATGACCTGAACCTGGGACTTGACACCACTACTGTCACACCTGGCTGAATGCTTTCATGCAGATCTGTAATGCAGA 1350
L I M L M T L N W D L T P I T V N T W L N A F M Q I C N A E 271
GGAGATTGCCAATAGAAAGACCAACTTTCACCTCCCTTCATCTCATGACTGAGTTTGTCAAGTAGCGCAGCTTCTGGATGTATGTAC 1440
E I A N R K T N F H F P S Y S T E F V Q V A Q L D V C T 301
CCTAGATCGTTCAATGAGCTTTGATTACAGTATCCTGGCAGCATGAGCTCTCTATCATGTAACCAATGAAGAGTGCATGAGTGT 1530
L D I G S M D F D Y S I L A A S A L Y H V T N E E V T L S V 331
AACAGGTTTGAAGTGGATGACATAGCAGCATGTGTCCAGTGGATGTCAACATTTGCCATGACGATCCGTGAAGTGGGCTGGCTCAGCT 1620
T G L K W D I A A C V Q W M S T F A M T I R E V G V A Q L 361
CAAGAACTTCAAGAATATCTATGACGAGATGCACACAACATTGACACACTGCTCAAGTTTAGAATTATTGGATAAATCCCATGAGAA 1710
K N F K N I Y A G D A H N I Q T H C S S L E L D K K S H E K 391
GCAAAGGCTATTGAGAGGAGCATCTTGTGACGAGCCGTCAGGATGCGCTGGTGTGACCCCTCCTCAGAGTGATAGAAAGTCAAGAA 1800
Q R L L R E A S C C S P V Q V P G V L T P P Q S D K K S K K 421
GGGAGTTCTATGATAGAGAAGGATATGCCACCAGTCTTGCCAGCCATATATATCAATGTATTAGCAGTAGGTAGTTTCTTTTAAATGA 1890
G V L * 424
AGGGGTTTCCCTTCCCAATAATTTCTTCTCTTTAAGATTTCAAAGGGCTTTTCTCTTCCAAGTCAGTTTATTGTAAGTAGTTAGGA 1980
TATAGAATATTAAATAGGATTTGTGATAGTGGTGGAGACATCGTAAACATATATTCTAGCTTGGAAATACATTACAAACATATTAATTT 2070
GAAGGGGGGATCAGCATATGTATTTTCAACCTCGTCAAGTTGAACATATCAATGATGTTTCCCTAAAATAGGAGCTTGGTAAATTTAT 2160
CTCATGTTGCTTCCAATCTATTGCTTGTCTGTAATTTTGTAGTGAATATATCGTTCAAACTGTTTTTAAATCAAAATGTTTATAGT 2250
CCAGGCCATCTTTCCATAACAAAATCTTAATTCCAAACCTGATTAATATCAGCGTATCTCTTTTAGATCAGGTCATCAAAATTTGTGA 2340
TACGTCAATAAATGTTATTAATAATTTTATACCAATTTTGAATAACGAGTATACAACTAATTACATGTTTGTTCAGCTTTCAGGTTAT 2430
AATAGGAATATAGTTTTTGCATTGTTGCCGAGAAATATTACTTAAAGTTAGAAAGTTATCATTCTTGTACAATTACAGAAAATTCAAAA 2520
GATGCAAAACAGGGTGTCTGTGTAAGTAGACTTAAAGAAAGGTTTTTTTTTCACTGAAATATGATGTAATGAGTAAATATGAGTGAT 2610
ATAATGACATTTGTAATTTATCTGAGCTATTATTTTGAACATAAATATTTTGGCAGAAGATATAAGATATTGTTGCCACTTGTAAAT 2700
CTTCACTGAAACTAATTCATATGATGTGCTGTCACCGAACAACCTAGGTTAGTTAGTTGCATATATTTTCATATTTTATTGAATGATT 2790
GCAAAATGTACAATGTTATTTGAAAATCTATTTTATATTTAGTTTCAAGTAAATTAAGGATCTAGGCTAGCT 2880
TGATGGTGACACGACATCTTATAAAATATAAATAATTTGTGATACCTATTAGTCTAGGAGGAAAAGCCCTTTTGAATTCAGAGTTGTA 2970
TTGTGCCACATCTTTTGGTAGCTCTTTTACCTGCGTGCATCAGAAATAGTTTGGCTTCTTTGTTGATTTATCATTTCTCAGATTGGATT 3060
TTGTTGTGGAGACACATCGAAGTTGTCTGATGCAATGATTTCTGTACAGATAAATATTTTATAGTTATGAGTAACCATATATTTTGTGTT 3150
AATTGCGCTGATGATGATTTATCTCAAAATGTAATCTCAATTTTCAATGCAATTTATTAAGCCTTGGATTTGTGTAATTTG 3240
TGGGTGTTTTTTTTTTTTTTTGAATTTGTACTATTTTCTGAGTTTGAATCTAATAATGGTGCTTTGTTTATGAGATACAGTATCATTACA 3330
ATTTACTCATATGTTTATGTTTGAATGAAATGGTGGACATCGTTATATAATAGAAATTTGTCTAAGTAATAAACCATTTGCTTTGACTA 3420
TCAAACCTTCAAGAACATGCAAAAGGAAATCTGCTGATCTGCTGCACAAAGATGACAATATTTTGTAGGAGTGATGATGTTGTA 3510
CTGATCCCTTTTAGTTTACTCTCAAGGGCTGAATATATTCAATTTGTTCACTGATATATTACAAAAACAGTTATGTGTGCTTATATA 3600
TTCCCTCATGGGAAAGAACTGTTGAAATGCCCTCAGAAATAGTAACATAAAAAATCATCAATTTTCAATACCACTGCTGCATTATTTATCA 3690
AATACTTCTGTTGATATAGGTATGTGATTGCAAAACAATGTAATGTAATTTTGTATGTTCCCTCACCAGAAGTGGAATTCAACTCACTG 3780
AGCTCTATGAGGCTACTATGAGTACTGATGAATTAAGTAACCTCAGTTTGGAGAGTGTCTAAAGATGAGATTCTGAGTTTCAATAAGAGT 3870
CTGCCCATTTAGATTGATTACTAGTATATATTTTCAGGTATTTGGGTCTCAATTTCAATAGTTTCTGTCTAGCTCTTTAACAAAATATTAGC 3960
AAATGTTTGAATATTTGTTTATGTTAACTTGTACATTTCTACATTTTAAATATTTATCTAGCTCTCGTAAAGGTAACACAGTGGGTAA 4050
ACATACTTTTCTGTATCGATCGATTCAAAACACAAATATAGTGAATGTAAGTTGCTGAGAGAAATTTAGGAGATTTTAAATGTATCATTTG 4140
GAGGAAGCAGTGTCTGCTTATTGTCGGGTATCATAAATATTAATGTTTTGTTTGTGATTTAGGATGCTTTTGTGTAGTTTATTTGTT 4230
TTGACAGTTGTAATGCTTCACTTCATGTTTATTTTCTTGTGCAAAACTCAGGACCAATGCATGAAATTCAGTATTCGTTTAC 4320
TCCGACGATGATTAATTTGTTTTCAGAACACGATTTTGTATTTTCAGAAATACCCAGTCAAGAGTCAAGCTTTGTAAATCTACTAAAAGTTT 4410
TTCTGCAAAATACCACCTGTATCATGTATGCATATTTCATCCATTTACTGATGCAAACTTTTTTAAATGAAAACATGTCTTCCCTTTAAAT 4500
GTTTTCTTGAAGCAGTTAGTAATATAAGCTTTATATTGCACATGATTTTCAAGACTCGACAAACATGTGCAGTAAATGGGACCCCAA 4590
ATTCTATGTAATGTAATGCTGTAATGTTTGAAGCAGTACGTTACTTCTATTTGTTTATATTTGTAAGTGGTTGTTTGTGTTTCTT 4680
TGATCTATTTGATTACTTTTTTCTCTCTAATGGCCAAGGCATATTTCTTAATGAGGAAAAAGACTTCATTCCTTTGCAATTTTATC 4770
ACATCCCTTTTCAGTAGGACAGATGTTTCTTCTTCTGTTTCTCTATGATTTTGTCAATTTGTTGTTGATGATTCTCCAATTTGTTACAT 4860
TTGTTATTTGTTTAAAGTCTGATGATTTTATTTGTTTCTATGCTCTATTTGATTTGATCTGTAAAGGCATTTCTCAGATTTGATGTTGATA 4950
TATCACTTTATCTCCTTATTTCTGTGTACTGTACATGATGATGATTTGGGCAATTTCTGTGTGTTTTAAGTGAGCAAAATGAGATTTTAG 5040
ATAATCGTACTTCAATCCAATGAAATTTAAATTAATCCTTTTCAATAGAGCTCAATTAACCTATTTCAGTATTATATCTTTGTTGTT 5130
GAAATATGTAATGCAATCAATCAAGATCCAAGTGAAGTGGGGAAATTTGATATTTCCACTCTTCCATTTTAAATATCTGTTGTTG 5220
ATGTTTCTGTATGAGTTTGTCTGATTTGTTCTGCTCAGTCTTTGAAATTTTATATATTGAATAAGTGAATGATACCATTTTCAAAA 5310
AAAAAAAAAAAAAAAAAAAAA 5333

Fig. 1. Nucleotide and amino acid sequence of HpCycE cDNA. The nucleotide sequence was determined from those of Clone 1 and Clone 2. The cyclin box is indicated by an open box and the polyadenylation signal is underlined.

Northern blotting

Five µg of the total RNA extracted from embryos at various developmental stages was electrophoresed in a 1% agarose gel containing formaldehyde and transferred onto a nylon membrane (NY13N, Schleicher & Schuell). *HpCycE* mRNA was probed by digoxigenin-labeled antisense RNA prepared from the *HpCycE* clone 1 using a DIG-RNA labeling kit (Boehringer-Mannheim, Mannheim, Germany), and the hybridized bands were visualized with a DIG Luminescent Detection Kit (Boehringer-Mannheim). Probe hybridizations were performed according to the manufacturer's instructions.

RESULTS AND DISCUSSION

Sixty-eight cDNA clones were isolated by the differential screening of the oocyte cDNA library of the sea urchin *Hemicentrotus pulcherrimus*, with cDNA probes covering the total poly(A)⁺ RNA population of the 16 cell-stage embryo and gastrula. One of them, Clone 1, consists of the nucleotide sequence with a significantly long ORF (open reading frame) containing a cyclin box. Since the ORF of Clone 1 is not completed and lacks a termination codon, we rescreened the cDNA library of unfertilized eggs with Clone 1 as a probe. Clone 2 thus isolated has a significant overlap with Clone 1 in its 5' half but contains a poly(A)⁺ tail at its 3' end. Figure 1 shows the nucleotide sequence constructed from Clone 1 and Clone 2 and the amino acid sequence deduced from it. It consists of 5,333 bp with an ORF of 1,272 bp encoding a polypeptide of 424 amino acids. Its calculated relative molecular mass is 48 kDa. A putative polyadenylation signal is located between +5,238 and +5,283. As Fig. 2 shows, the ORF of Clone 1 contains a stretch of the amino acid sequence highly homologous to the cyclin box of cyclin E of various other animals, with 70.6%, 67.0%, 70.6%, 65.1%, 67.0% and 68.8% sequence identity with human (Koff *et al.*, 1991), rat (EMBL Access. No. P39949), chicken (EMBL Access. No. P49707), *Xenopus* (Rempel *et al.*, 1995), zebrafish (EMBL Access. No. S52288) and *Drosophila* (EMBL Access. No. P54733), respectively.

Since the amino acid sequence of the cyclin box of the cloned ORF is very similar to the cyclin E of other animals and evolutionally well conserved, we concluded that the cDNA

clones we isolated represent a sea urchin homologue of the cyclin E gene, and designated it *HpCycE*. The amino acid sequence similarity of *HpCycE* with other types of cyclins is low (45% with mouse cyclinA and 43% with chicken cyclinA).

To estimate the copy number of the *HpCycE* gene within the *H. pulcherrimus* genome, we Southern blotted the *Eco*RI-, *Sac*I- and *Pst*II-digests of the sea urchin genomic DNA using DIG-labeled clone1 cDNA as the probe. As shown in Fig. 3, only a single band was detected, suggesting that *HpCycE* is present as a single copy gene in the *H. pulcherrimus* genome.

Figure 4 shows the results of the Northern blotting of the total RNA extracted from various stages of *H. pulcherrimus* embryos with DIG-labeled Clone 1 RNA as the probe. Transcripts of *HpCycE* had accumulated in unfertilized eggs, as expected from their maternal origin. The level of *HpCycE* mRNA remained almost unchanged until the morula stage, but thereafter gradually declined, indicating the possible involvement of cyclin E with rapid cell proliferation during cleavage, while no obvious zygotic expression of the *HpCycE* gene during early embryogenesis was detectable. This is similar to the case of *Drosophila* Cyclin E (Richardson *et al.*, 1993) in that cyclin E (*Dmcyce*) mRNA is supplied maternally, but is rapidly degraded after the completion of cleavage division. Studies of mammalian tissue culture cells reveal that the level of cyclin E is maximal in the late G1 phase and in the early S phase regulating the entry of cells into the S phase (Dulic *et al.*, 1992; Gong *et al.*, 1995; Ohtsubo *et al.*, 1995), while in *Drosophila* embryos, *Dmcyce* is absent in the G1 phase but appears at the onset of the S phase (Richardson *et al.*, 1995). The rapidly proliferating CNS cells that exhibit no obvious G1 stage express cyclin E constitutively (Duronio and O'Farrell, 1995). The ontogenic fluctuation of *HpCycE* mRNA observed in the present study agrees well with the results reported on *Drosophila* embryos and mammalian cells, suggesting that *HpCycE* is also related in a similar way to the cell cycle transition from G1 to S during cleavage. The constitutive presence of cyclin E in the sea urchin cleaving embryo may be related to the lack of G1 at this stage of development.

HpCycE	156:RAILLDWLIEVCEVYRLHRESFYLAADFVDRLAAKENVPKTKLQLIGITSLFVAAKLEE	216
human	130:.....M.....K....T....Q..F...M.TQ...V..L.....S...I.....	190
rat	131:..V.....M.....K....T....Q..F...M.SQ..II..L.....SA..I.S....	191
chicken	142:.T.....M.....K.Y..T....Q..F..FM.TQ...V..L.....S...I.....	202
<i>Xenopus</i>	144:.....M.....K....T....Q..F..FM.TQK..I.SR.....I..NV..	208
zebrafish	147:.....M.....K....T...GQ.YF..FM.TQ...L..T.....SC...I...M..	207
<i>Drosophila</i>	255:.....K....T....V.YL.....HVAHK.Q..H.....C.....V..	315
HpCycE	217:IYPPKLHEFAYVTDGACTDDQILDQELIMLMTLNWDLTPITVNTWLNAF	264
human	191:.....Q.....SG.E..TM..MIMKA.K.R.S.L.IVS...VY	238
rat	192:.....Q.....SG.E..TM..M.MKA.K.R.S.L.IVS...VY	239
chicken	203:.....Q.....E.E..SM...IMKA...N.N.L..VS...IY	250
<i>Xenopus</i>	209:.....Q.SFI.....E.E.TRM...IMKD.G.C.S.M.IVS.F.V.	252
zebrafish	208:.....V.Q.....E.D..SM.I.IMKE...S.S.L.PVA...IY	255
<i>Drosophila</i>	316:.....IG.....ERD..NH.K.L.QA.D..IS...ITG..GVY	363

Fig. 2. Comparison of the amino acid sequence of the cyclin box of *HpCycE* with those of other animals. Dots indicate identical amino acids between *HpCycE* and those of other animals.

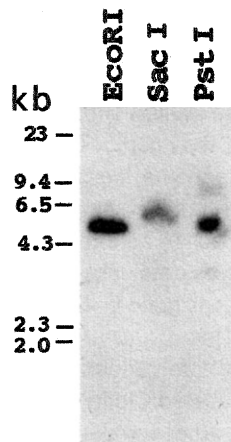


Fig. 3. Southern blot of *H. pulcherrimus* genomic DNA. Two micrograms of sperm DNA was digested with *EcoRI*, *SacI* and *PstI*. *HindIII*-digested λ DNA was used as the DNA size marker.

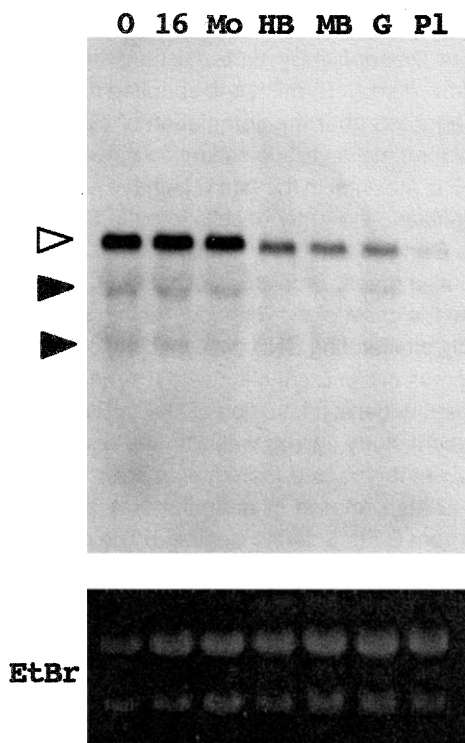


Fig. 4. Ontogenic changes in the accumulation of HpCycE mRNA. Total RNA populations were extracted from sea urchin embryos at various stages, and 10 μ g each was electrophoresed, transferred to a nylon membrane, and hybridized with the antisense RNA probe synthesized from Clone 1. The blank arrowhead indicates HpCycE mRNA, and the solid arrowheads indicate rRNAs. O, unfertilized eggs; 16, 16 cell-stage embryos; Mo, morulae; HB, hatched blastulae; MB, mesenchyme blastulae; G, gastrulae; Pl, pluteus larvae.

ACKNOWLEDGMENTS

This work was supported in part by Grants-in-Aid for Scientific Research on Priority Areas (08254212) and for Scientific Research (B) to H.S.(07458195), and for Scientific Research (C) to K.A. (08680795) from the Ministry of Education, Science, Sports and Culture, Japan. This research was also supported in part by a Grant Pioneering Research Project in Biotechnology given to H.S. by the Ministry of Agriculture, Forestry and Fisheries, Japan. Research support by a Grant from The Mitsubishi Foundation to H.S. is also acknowledged.

REFERENCES

- Chomczynski P, Sacchi N (1987) Single-step method of RNA isolation by acid guanidinium thiocyanate-phenol-chloroform extraction. *Anal Biochem* 162: 156–159
- Dulic V, Lees E, Reed SI (1992) Association of human cyclin E with a periodic G1-S phase protein kinase. *Science* 257: 1958–1961
- Duronio RJ, O'Farrell PH (1995) Developmental control of the G1 to S transition in *Drosophila*: cyclin E is a limiting downstream target of E2F. *Genes Dev* 9: 1456–1468
- Evans T, Rosenthal ET, Youngblom J, Distel D, Hunt T (1983) Cyclin: A protein specified by maternal mRNA in sea urchin eggs that is destroyed at each cleavage division. *Cell* 33: 389–396
- Gong J, Traganos F, Darzynkiewicz Z (1995) Threshold expression of cyclin E but not D type cyclins characterizes normal and tumor cells entering S phase. *Cell Prolif* 28: 337–346
- Jackson PK, Chevalier S, Philippe M, Kirschner MW (1995) Early events in DNA replication require cyclin E and are blocked by p21CIP1. *J Cell Biol* 130: 755–769
- Koff A, Cross F, Fisher A, Schumacher J, Leguellec K, Philippe M, Roberts JM (1991) Human cyclin E, a new cyclin that interacts with two members of the CDC2 gene family. *Cell* 66: 1217–1228
- Koff A, Giordano A, Desai D, Yamashita K, Harper JW, Elledge S, Nishimoto T, Morgan DO, Franza DBR, Roberts JM (1992) Formation and activation of a cyclin E-cdk2 complex during the G1 phase of the human cell cycle. *Science* 257: 1689–1694
- Koff A, Ohtsuki M, Polyak K, Roberts JM, Massague J (1993) Negative regulation of G1 in mammalian cells: inhibition of cyclin E-dependent kinase by TGF- β . *Science* 260: 536–539
- Lew DJ, Vjekoslav D, Reed SI (1991) Isolation of three novel human cyclins by rescue of G1 cyclin (Cln) function in yeast. *Cell* 66: 1197–1206
- Ohtsubo M, Theodoras AM, Schumacher J, Roberts JM, Pagano M (1995) Human cyclin E, a nuclear protein essential for the G1-to-S phase transition. *Mol Cell Biol* 15: 2612–2624
- Pines J, Hunt T (1987) Molecular cloning and characterization of the mRNA for cyclin from sea urchin eggs. *EMBO J* 6: 2987–2995
- Rempel RE, Sleight SB, Maller JL (1995) Maternal *Xenopus* Cdk2-cyclin E complexes function during meiotic and early embryonic cell cycles that lack a G1 phase. *J Biol Chem* 270: 6843–6855
- Richardson HE, O'Keefe LV, Reed SI, Saint R (1993) A *Drosophila* G1-specific cyclin E homolog exhibits different modes of expression during embryogenesis. *Development* 119: 673–690
- Richardson H, O'Keefe V, Marty T, Saint R (1995) Ectopic cyclin E expression induces premature entry into S phase and disrupts pattern formation in the *Drosophila* eye imaginal disc. *Development* 121: 3371–3379

(Received June 23, 1997 / Accepted July 2, 1997)