

## **Identification and Distribution of Three Gonadotropin-Releasing Hormone (GnRH) Isoforms in the Brain of a Clupeiform Fish, *Engraulis japonicus***

Authors: Sukhan, Zahid Parvez, Kitano, Hajime, Selvaraj, Sethu, Yoneda, Michio, Yamaguchi, Akihiko, et al.

Source: Zoological Science, 30(12) : 1081-1091

Published By: Zoological Society of Japan

URL: <https://doi.org/10.2108/zsj.30.1081>

---

The BioOne Digital Library (<https://bioone.org/>) provides worldwide distribution for more than 580 journals and eBooks from BioOne's community of over 150 nonprofit societies, research institutions, and university presses in the biological, ecological, and environmental sciences. The BioOne Digital Library encompasses the flagship aggregation BioOne Complete (<https://bioone.org/subscribe>), the BioOne Complete Archive (<https://bioone.org/archive>), and the BioOne eBooks program offerings ESA eBook Collection (<https://bioone.org/esa-ebooks>) and CSIRO Publishing BioSelect Collection (<https://bioone.org/csiro-ebooks>).

Your use of this PDF, the BioOne Digital Library, and all posted and associated content indicates your acceptance of BioOne's Terms of Use, available at [www.bioone.org/terms-of-use](http://www.bioone.org/terms-of-use).

Usage of BioOne Digital Library content is strictly limited to personal, educational, and non-commercial use. Commercial inquiries or rights and permissions requests should be directed to the individual publisher as copyright holder.

---

BioOne is an innovative nonprofit that sees sustainable scholarly publishing as an inherently collaborative enterprise connecting authors, nonprofit publishers, academic institutions, research libraries, and research funders in the common goal of maximizing access to critical research.

# Identification and Distribution of Three Gonadotropin-Releasing Hormone (GnRH) Isoforms in the Brain of a Clupeiform Fish, *Engraulis japonicus*

Zahid Parvez Sukhan<sup>1</sup>, Hajime Kitano<sup>1</sup>, Sethu Selvaraj<sup>1</sup>, Michio Yoneda<sup>2</sup>,  
Akihiko Yamaguchi<sup>1</sup>, and Michiya Matsuyama<sup>1\*</sup>

<sup>1</sup>Laboratory of Marine Biology, Faculty of Agriculture, Kyushu University, Fukuoka 812-8581, Japan

<sup>2</sup>National Research Institute of Fisheries and Environment of Inland Sea,  
Fisheries Research Agency, Imabari, Ehime 794-2305, Japan

To gain a better understanding of the reproductive endocrinology of a primitive order clupeiform fish (Japanese anchovy, *Engraulis japonicus*), cDNAs encoding three gonadotropin-releasing hormone (GnRH) isoforms were isolated from the brain, and their distribution was analyzed using in-situ hybridization (ISH). The three GnRH isoforms include GnRH1 (herring GnRH), GnRH2 (chicken GnRH-II) and GnRH3 (salmon GnRH), and their full-length cDNAs encode 88, 86, and 89 deduced amino acids (aa), respectively. Alignment analysis of Japanese anchovy GnRH isoforms showed lower identities with other teleost fish. The major population of GnRH1 neurons was localized in the ventral telencephalon (VT) and nucleus preopticus (NPO) of the preoptic area (POA) with minor population in the anterior olfactory bulb (OB). GnRH2 neurons were restricted to the midbrain tegmentum (MT), specific to the nucleus of the medial longitudinal fasciculus (nMLF). GnRH3 neurons were localized in the olfactory nerve (ON), ventral OB, and transitional area between OB and ON. Interestingly, GnRH1 neurons were also localized in the olfactory bulb, in addition to its major population in the preoptic area. These results indicate the differential distribution of three GnRH isoforms expressed in the brain of the Japanese anchovy.

**Key words:** GnRH, Clupeiformes, Japanese anchovy, cDNA cloning, In-situ hybridization

## INTRODUCTION

Gonadotropin-releasing hormone (GnRH) is a neuropeptide that controls the cascade of hormones through the brain-pituitary-gonadal (BPG) axis, involved in the regulation of reproductive processes (Dubois et al., 2002; Kah et al., 2007; Matsuyama et al., 2013). GnRH neurons innervate anterior pituitary regions to stimulate the synthesis and secretion of the gonadotropic hormones, follicle stimulating hormone (FSH) and luteinizing hormone (LH), which promotes sex steroid production responsible for the growth and maturation of gonads (Chang et al., 2009). Further, these sex steroids, in turn, feed back to the brain, including the pituitary, to complete the BPG axis (Shahjahan et al., 2010). In addition to the primary role of GnRH in the endocrine regulation, it is also known to play a neuromodulatory role in sexual behaviour and transducing olfactory signals (Dubois et al., 2002). It also modulates conventional synaptic transmission (Kinoshita et al., 2007), and electrical activity of vasotocin (VT) and isotocin (IT) neurons in the brain (Saito et al., 2003), and acts as a melatonin-releasing factor in the pineal of teleost fish (Servili et al., 2010). In addition, it

directly regulates synthesis and release of somatolactin as well as growth hormone (GH)/prolactin (PRL) (Marchant et al., 1989; Weber et al., 1997; Kakizawa et al., 1997; Onuma et al., 2005).

To date, 30 isoforms of GnRH have been reported; representing 15 vertebrate and invertebrate species, respectively (Roch et al., 2011; Selvaraj et al., 2012a). Interestingly, eight out of 15 vertebrate GnRH isoforms have been isolated in teleost fish (Roch et al., 2011; Adams et al., 2002), and two or three unique GnRH isoforms have been identified in each representative species (Carolsfeld et al., 2000; Adams et al., 2002). Teleost fish expressing two GnRH isoforms in the brain include members from order anguilliformes (Japanese eel, *Anguilla japonica*; Okubo et al., 1999), salmoniformes (masu salmon, *Oncorhynchus masou*; Amano et al., 1991), siluriformes (African catfish, *Clarias gariepinus*; Bogerd et al., 1994), cypriniformes (goldfish, *Carassius auratus*; Kim et al., 1995), and osteoglossiformes (butterfly fish, *Pantodon buchholzi*; O'Neill et al., 1998). Fish with three GnRH isoforms include members from order perciformes (African cichlid, *Haplochromis burtoni*; White et al., 1995; gilthead sea bream, *Sparus aurata*; Gothilf et al., 1996; Atlantic croaker, *Micropogonias undulatus*; Mohamed et al., 2005; chub mackerel, *Scomber japonicus*; Selvaraj et al., 2012a, b), beloniformes (medaka, *Oryzias latipes*; Okubo et al., 2000), pleuronectiformes (barfin flounder, *Verasper moseri*; Amano et al., 2002; Japanese floun-

\* Corresponding author. Tel. : +81-92-642-2888;  
Fax : +81-92-642-2888;  
E-mail: rinya\_m@agr.kyushu-u.ac.jp  
doi:10.2108/zsj.30.1081

der, *Paralichthys olivaceus*; Pham et al., 2007), atherini-formes (pejerrey, *Odontesthes bonariensis*; Guilgur et al., 2007), salmoniformes (whitefish, *Coregonus clupeaformis*; Vickers et al., 2004), tetraodontiformes (grass puffer, *Takifugu niphobles*; Shahjahan et al., 2010) and clupeiformes (Pacific herring, *Clupea harengus pallasii*; Carolsfeld et al., 2000; American shad, *Alosa sapidissima*; Abraham, 2004). In the clupeiform fish (Pacific herring), a herring GnRH (hrGnRH) isoform was first detected by HPLC analysis as a novel isoform (Carolsfeld et al., 2000). Subsequently, Abraham (2004) cloned full-length cDNA encoding hrGnRH isoform in the brain of American shad. However, detailed information on the molecular cloning and distribution of multiple GnRH isoforms of any clupeiform fish is lacking.

Traditionally, GnRH isoforms have been named based on the species in which they were first identified (O'Neill et al., 1998). In recent years, GnRH isoforms are classified as GnRH1, GnRH2, and GnRH3 based on phylogenetic analyses and neuroanatomical distribution (Fernald and White, 1999). In this paper, we follow the recent classification system. Expression studies of three GnRH isoforms in fish have shown restricted regional distribution within the brain, suggesting distinct physiological roles and functions. GnRH1 is the species-specific hypophysiotropic and reproductively relevant isoform expressed by neuronal populations distributed in the ventral telencephalic-preoptic area and hypothalamus (HYP) of the forebrain regions. GnRH2 is highly conserved in all species studied to date; it is the chicken GnRH-II (cGnRH-II) isoform and expressed exclusively in the midbrain tegmentum (MT); their fibers project widely into different regions of the brain, suggesting a possible role in neuro-modulation; however, its overall function is not fully understood. GnRH3 is a teleost-specific isoform, if present, it is salmon GnRH (sGnRH) isoform and expressed in the olfactory bulb-terminal nerve area and regulates sexual behaviour, including spawning migration (Wirsig-Wiechmann, 2001).

The Japanese anchovy, *Engraulis japonicus*, belongs to a relatively primitive order of fish, clupeiformes. In Japan, more than 10 clupeiform species are utilized as food resources (Ohkubo et al., 2010). Among the economically important clupeiform species, Japanese anchovy is one of the most important species in the commercial capture fishery in Japan. It is a multiple-spawning, small pelagic fish that spawns from early spring to late autumn; in addition, the life cycle is short that facilitates easy experimentation. The populations of economically important clupeiform species were shown to fluctuate extremely in response to climate regime shift (Watanabe, 2007), and in particular, population fluctuations of Japanese anchovy and sardine (*Sardinops melanostictus*) are closely linked; when Japanese anchovy becomes abundant, sardine becomes scarce, and after a few decades, for unknown reasons, the dominant species starts to alter (Mantua and Hare, 2002). However, it remains unclear whether climate regime shifts influence the reproductive and endocrinological processes underlying this shift. There is thus a need to understand the basic aspects of reproductive endocrinology of clupeid fishes. With this background, our laboratory is experimenting with Japanese anchovy and sardine.

In the present study, we cloned and sequenced cDNAs encoding three GnRH isoforms in the Japanese anchovy, and analyzed their distribution in the brain using in-situ hybridization (ISH) technique.

## MATERIALS AND METHODS

### Animal and tissue preparation

Adult Japanese anchovy were collected from Omura Bay, Nagasaki prefecture and reared at the Fishery Research Laboratory of Kyushu University, Fukuoka, Japan under natural day length and temperature supplied with seawater. Forty sexually mature fish of both sexes were sampled for the study. At each sampling point, fishes were sacrificed in accordance with the guidelines for animal experiments of the Faculty of Agriculture and Graduate Course of Kyushu University and according to the laws (No. 105) and notifications (No. 6) of the Japanese Government. Body length, body weight and gonad weight were measured, and the midsection of each gonad from individual fish was fixed in Bouin's solution for gonadal histology. The mean body length, body weight, and gonad weight were  $9.30 \pm 1.21$  cm,  $10.97 \pm 0.42$  g, and  $0.43 \pm 0.05$  g, respectively.

The whole brains ( $n = 10$ –12 of each sex) were removed following decapitation, transferred immediately to liquid nitrogen, and stored at  $-80^{\circ}\text{C}$  until total RNA extraction. A set of whole head ( $n = 12$ –14 of each sex) were fixed in 4% paraformaldehyde (PFA) at  $4^{\circ}\text{C}$  overnight for ISH analysis. Another set of whole head ( $n = 10$ ) was stored in RNA later (Qiagen, Hilden, Germany) solution, immediately after sampling for RT-PCR analysis.

### Histology

Bouin's solution-fixed gonad samples were dehydrated in a graded series of ethanol, embedded in paraffin, and sectioned at  $5\text{ }\mu\text{m}$  using a rotary microtome (RM2155, Leica, Germany). The sections were stained with toluidine blue, and observed under a light microscope to confirm the gonadal stage; observation showed that male and female fish used in this study were in the spermiation and late vitellogenic stages, respectively (data not shown). A few brain samples were also processed and sectioned at  $10\text{ }\mu\text{m}$  thickness and stained with Nissl stain (cresyl violet) to confirm that GnRH-mRNA expressing cells are neurons.

### Cloning, sequencing and phylogenetic analysis of three GnRH isoforms

#### cDNA cloning and sequencing

Total cellular RNA was extracted from the whole brain using ISOGEN (Nippon Gene, Japan), following the manufacturer protocol. First-strand cDNAs were synthesized from  $1\text{ }\mu\text{g}$  of total RNA using oligo (dT) primer (OdT) (Sigma) and superscript III reverse transcriptase (Invitrogen). The degenerate primers for amplification of 3' ends of all three GnRH isoform cDNAs were designed from highly conserved decapeptide region of each GnRH cDNA sequence in other teleost fish. The list of primers is shown in Table 1. The cloning and sequencing of three GnRH isoforms were carried out following the protocol described by Selvaraj et al. (2012a) and Kitano et al. (2012) with slight modifications.

The temperature cycle profile for each GnRH isoform was same for 3' and 5' RACE (rapid amplification of cDNA ends) PCR:  $95^{\circ}\text{C}$  for 9 min, 35 cycles of  $94^{\circ}\text{C}$  for 1 min,  $62^{\circ}\text{C}$  for 1 min, and  $72^{\circ}\text{C}$  for 1 min. For amplification of the full-length sequences, temperature profile was set as  $95^{\circ}\text{C}$  for 9 min, 35 cycles of  $94^{\circ}\text{C}$  for 1 min,  $60^{\circ}\text{C}$  for 1 min, and  $72^{\circ}\text{C}$  for 1 min.

#### Phylogenetic and sequence identity analyses

The cDNA sequences encoding 40 different GnRH precursors of teleost fishes were obtained from GenBank (<http://www.ncbi.nlm.nih.gov>). Phylogenetic analyses were conducted by

pairwise alignment with ClustalW using BioEdit Sequence Alignment Editor, version 7.1.30 software (Hall, 1999) and a phylogenetic tree was generated using the neighbor-joining method with MEGA4 software (Tamura et al., 2007). Amino acid sequence identity between GnRHs of the Japanese anchovy and those of other teleost species were calculated by BioEdit Sequence Alignment Editor, version 7.1.3.0 (Hall, 1999).

### In-situ hybridization of three GnRH isoforms

#### Riboprobe synthesis

The ORF (open reading frame) regions of the Japanese anchovy GnRHs were used to synthesize GnRH riboprobes. Single-strand anti-sense and sense RNA probes labelled with digoxigenin (DIG; Roche) were synthesized for non-fluorescent ISH, according to the standard protocol prescribed for DIG Kit. To prepare linear plasmid, 10 µg of pGEM-T Easy vector plasmid DNA containing either Japanese anchovy GnRH1, GnRH2, or GnRH3 cDNA was linearized with restriction enzymes, Sall or NcoI (Promega). The antisense and sense riboprobes were synthesized by using the Riboprobe In-Vitro Transcription system (Promega). One-microgram of the linearized plasmid DNA was incubated for 2 h at 37°C with 2.0 µL of T7 or SP6 RNA polymerase, in a volume of 20 µL, containing 4.0 µL of 5× optimized transcription buffer (Promega; #P1181), 2.0 µL of 100 mM DTT, 2.0 µL of DIG-RNA labelling mix, 1.0 µL of RNase inhibitor (RNase out), and 8.0 µL of RNase-free water. Following the transcription reaction, the plasmid DNA template was digested for 15 min at 37°C with 0.5 µL of RNase out and 2.0 µL of DNase I (DIG kit). The riboprobes were purified by ethanol precipitation with 1 µL of tRNA (10 mg/ml, Sigma) and stored at -80°C until used for ISH.

**Table 1.** List of primers used for cDNA cloning of GnRH1 (hrGnRH), GnRH2 (cGnRH-II), and GnRH3 (sGnRH), and RT-PCR analysis of GnRH1 and GnRH3 in the Japanese anchovy.

Primer	Nucleotide sequences	Purpose
Oligo dT Primer (OdT)	GGC CAC GCG TCG ACT AGT ACT TTT TTT TTT TTT TTT T	RACE-PCR
Oligo dT adaptor Primer (AP)	GGC CAC GCG TCG ACT AGT AC	RACE-PCR
hrGnRH-DP1	CARCACTGGTCNCAYGGNYT	3' RACE
hrGnRH-DP2	CACCTGGTCNCAYGGNYTNA	3' RACE (Nested)
hrGnRH-GSP1	CATTGCTCTGCTCATCAGGCTG	5' RACE
hrGnRH-GSP2	CCTTCTGCTGCTCAGTGCATCTC	5' RACE (Nested)
hrGnRH-GSP3	GAAAACACAGAGCCAGACC	Full length
hrGnRH-GSP4	AGCAGTGGTGACTTTCAGTGAAC	Full length (Nested)
cGnRH-II-DP1	CARCACTGGTCYCAVGGBTGG	3' RACE
cGnRH-II-DP2	TCYCAVGGBTGATYCCBGDGG	3' RACE (Nested)
cGnRH-II-GSP1	CCAGCCAGTGATGTCACCTCCTC	5' RACE
cGnRH-II-GSP2	ATTCTCTGTCAGGCTTCCAAC	5' RACE (Nested)
cGnRH-II-GSP3	CAAATACAGTCCAGTGATGCG	Full length
cGnRH-II-GSP4	TAGAGTCACTCGACCACTGACG	Full length (Nested)
sGnRH-DP1	CAGCAYTGGTCNTAYGGNTGG	3' RACE
sGnRH-DP2	TAYGGNTGGCTDCCNGGNGG	3' RACE (Nested)
sGnRH-GSP1	GCGTGCATCAGTCAAGCAATTC	5' RACE
sGnRH-GSP2	TCTTCGTAATGGCCTTCGACCTC	5' RACE (Nested)
sGnRH-GSP3	GAAAACACAGAGCCAGACC	Full length
sGnRH-GSP4	AGCAGTGGTGACTTTCAGTGAAC	Full length (Nested)
hrGnRH RT Fw	CGAATCACAAGTGATGGAGG	RT-PCR
hrGnRH RT Rv	CATTGCTCTGCTCATCAGG	Tissue distribution
sGnRH RT Fw	GCATTGGAGGAGAACTGGAG	
sGnRH RT Rv	ATGGCCTTCGACCTCTTCTC	
β-actin Fw	ATGACACAGATCATGTTCCGAGAC	Internal control
β-actin Rv	TCACACCATACCATGAGTCC	

Oligomix: N=A+C+G+T; B=C+G+T; D=A+G+T; R=A+G; Y=C+T.

### Tissue preparation

PFA-fixed Japanese anchovy whole heads were trimmed to collect the brain. The brain was dehydrated using ethanol, embedded in paraffin, and sectioned at 5 µm thickness in sagittal orientation. Eight sections were mounted on each MAS-coated superfrost micro slide glass (Matsunami, Osaka, Japan). Two consecutive slides were prepared with alternative sections for hybridization of GnRH mRNAs using anti-sense and sense riboprobes, respectively.

### In-situ hybridization (ISH)

ISH was carried out using TSA plus DNP AP system kit (PerkinElmer, USA) according to manufacturer protocol ([http://www.perkinelmer.com/CMSResources/Images/44-73610MA\\_NTSAPlusDNPChromoInSitu.pdf](http://www.perkinelmer.com/CMSResources/Images/44-73610MA_NTSAPlusDNPChromoInSitu.pdf)). The deparaffinized, dehydrated tissue sections were first washed with phosphate buffer (PB, pH 7.4), treated with proteinase K (10 µg/ml) for 10 min at 37°C, washed with PB for 1 min, followed by post-fixation in 4% PFA for 15 min, washed twice in phosphate buffered saline (PBS; pH 7.4) for 15 min each,

### (A) GnRH1

```

1 GAACAGCAGAAAACCCAGAGCCAGACCTCTCCAGCCACTGCCACTTCAGAAAAATGAGA
63 AGTAAGGGCGCCCTCGTGTGTCTGCTGCTTGTACTGTCAGCTGTCTCGTGTCTGCTCT
3 S K G A L V C L L L V T A A V L Q C S S
Signal peptide
123 CAGCAGTGTGTCATGTCGCTGAGTCCCGGTGGAAGAGAGAGCTGACTCTCCAGCGAA
23 Q H W S H G L S P G G K R E A D S P S E
GnRH1 decapeptide Cleavage site
183 TCACAAGTGATGGAGGGTCTCCAGGAGAGGAGGACGCTGTGGAGTGACACACAGA
43 S Q V M E G L P R R G G A R C G S D T R
GnRH-associated peptide
243 GATGCAGCAATCAGGAAAGGCCAGCACACTGGAACAACTGATGACCTGATGACAGAGA
63 D A A N Q E R P S T L E Q L I S L M S R
303 GCAATGAAGTTTATGACTGAGGACACGAGGAGGCTCCATAATCACTACAATGTGTTT
83 A N E V Y D
363 ACATTATTGTTTATGATAGAAATGTTCACTGAAAGTCAACCACTGCTTTTCTTAAACAA
423 TATTAATAATGAGCCTGTTCAATAATACACAATCTCTGTATGAAATAGATTATCTTG
483 CTTTCAAAACCGTCAAAAAA

```

### (B) GnRH2

```

1 GAAAGTCTCTCAACTACAATAACAGCTCCAGTGATGGCGTGTGGGTACAGGTGGTCTCTG
1 M A C G Y R W V L
61 CTGGCAGCGTGTCTCTGTCTGCGGTGTAGAGCTGTCTGGGCTCAGCACTGGTCTCAC
10 L A A V L L F L G V E L S G A Q H W S H
Signal peptide
121 GGATGTATCCAGGAGGCAAGAGGGATGTGGACACCTTCAACTCAGCAGGCTCTCGGAG
30 G W Y P G G K R D V D T F N S A Q V S E
decapeptide Cleavage site
181 GAGATTAGTTGTGTAGGCGAGGAGTGACAGTCTACGCGGCCAGAGGAGAACTTA
50 E I K L C E A G E C S Y L R P Q R R N L
GnRH-associated peptide
241 CTCAAGAGCATCTGTTGGAAGCCCTGACGAGAGATTCAGAGGAGGAGTGCATCAC
70 L K S I L L E A L T R E F Q R R K
301 TGCTGGCTGAGCCATTCTCTGTGTGTAGAGAGCGTCAGTGGTCCAGTGTCTAGTC
361 TTCGTCCATTGTTGTTGTGTGTTCCAGTCAAGAGGCCATGTGACTGGGATGCGCTTGG
421 ATATAATGACCTTGTCAACAAATCTTGTACAGTGTGATGATGCCAAACAAACGTCATT
481 TTTTCCCTTCAAAATGTTTGTGTTGATTACAGATGCTGTCATGCACCATGTCATCATG
541 CAACCATTAGCAGTATATAGTCTGTTGCCAAGCGGATCTGCTGCCATTCTTGTCTATA
601 ATTCTCTACCATTAATAAATCCATCATGTGTGATCTGAAAAA

```

### (C) GnRH3

```

1 GAAAAAGACGACAGAGAAAAGGATGGAGCAGGCGAGTTGGTGTGCTGCTGTTG
1 M E Q G R L V L L L V L
61 GCGTGCCTGTGAAGAGTGTGTGTGTGACAGTGTGTGCTACGGCTGGTACCGGGCGG
13 A C A C K E C V C Q H W S Y G W L P G G
Signal peptide
121 AAACGACGATGGAGGAGAACTGGAGGCTACTTTCAGGATGATGGATGCTGGAGATACT
33 K R S I G G E L E A T E R M M D A G D T
Cleavage site
181 CTCTCTCTCTCAGGCGGAAAAATACAAACCAATGATGCTATCATGATGACATAGAA
53 L I P L T A E K L Q P N D A I I D D I E
241 GAGAATGCTGTGAGAAGAGTCCGAAGGCCATACGAAGAGAAATGCTGACTGATGACG
73 E N A V R R G R R P L R R E L L D
301 CACACACATACAGATAGAACATCTTGTGTTTGTATCAAGTAAATGTGAATAATCTTA
361 AATTGTA

```

**Fig. 1.** Nucleotide and deduced amino acid sequences of Japanese anchovy GnRH1 (A), GnRH2 (B), and GnRH3 (C) cDNAs. The putative signal peptide, cleavage site, and GnRH-associated peptide are underlined and GnRH decapeptide region highlighted. The stop codon (TGA) is indicated by an asterisk (\*), the polyadenylation signal (TGA) is boxed. GenBank accession numbers are JX406273 (GnRH1), JX406274 (GnRH2), and JX406275 (GnRH3).

and in 5x standard saline citrate (SSC) buffer for 15 min. The sections were pre-hybridized in a wet humidified chamber (wet with 5x SSC) for 2 h at 58°C, and then hybridized with 100 ng/ml DIG-labelled GnRH riboprobes diluted with hybridization buffer [50 ml preparation: 100% formamide: 25 ml, 20x SSC: 12.5 ml, 50x Denhardt's (Nacalai): 5 ml, Baker's Yeast RNA (Sigma): 11.4 mg/ml; 175 µL, RNase-free water: 4.8 ml, and Sperm DNA (Nacalai; 10 mg/ml): 2.5 ml] at 58°C for 16–20 h. The hybridization was followed by washes in 2x SSC for 30 min at room temperature (RT), 2x SSC for 1 h at 65°C, 0.1x SSC for 1 h at 65°C, and Tris-NaCl-Tween (TNT) wash buffer (0.1 M Tris-HCl, pH 7.5, 0.15 M NaCl, 0.05% Tween 20) for 5 min at RT. The sections were blocked with Tris-NaCl-blocking buffer (TNB; supplied with kit) for 30 min at RT and incorporated with anti-DIG-POD, Fab fragments (Roche, 1:1000 in TNB) for 30 min at RT, followed by three washes with TNT buffer for 5 min each, incubated in DNP amplification reagent working solution (supplied in kit; DNP stock solution diluted in 1x plus amplification diluent at 1:50) for 10 min at RT, three washes in TNT buffer for 5 min each, incubated with anti-DNP-AP (supplied in kit; diluted in TNB at 1:100) for 30 min at RT, three washes with TNT for 5 min each, and equilibrated with detection buffer, Sodium-Tris-Magnesium (NTM) buffer for 5 min. Alkaline phosphatase staining was performed by incubating the sections with Nitro-Blue-Tetrazolium/5-bromo-4-chloro-3-indolyl phosphate (NBT/BCIP) for 15–20 min in the dark. After washing with ultrapure water (UPW), the sections were cover slipped using Aquatex aqueous mounting media (Merck, Darmstadt, Germany).

#### Nissl counterstain

Few sense probe hybridized ISH slides were counterstained with Nissl stain (cresyl violet) following the protocol described by Kádár et al. (2009) with slight modifications. Slides were dehydrated using ascending series of ethanol, dipped in xylene for 5 min twice and rehydrated in descending series of ethanol and

## (A) GnRH1

	Signal peptide	GnRH1 Decapeptide	GnRH-associated Peptide	
Japanese anchovy	MRSKG---ALVCLLLVTAAVLQCSS	QHWSHGSLSPG	GKREADSPSE--SQV	45
American shad	.EG.R---.LW...IA..AF.L.A	.....	...HTL.----E.	43
African catfish	.GI.R---.---WMMV.CVV...V.A	.....N..	...AVMQE.-----	40
Japanese medaka	.VV.T---WMPW-...SSVLS.GCC	...F.....	...LKYFPNTLENQ	46
Pejerrey	.AVRT---WALWP...GSVL..VTC	...F.....	...DL.TF.DTLDN.	47
Japanese eel	.AD.S---AL.WLG-.AV.L.C.GCC	...Y..R..	...G...LQDTLQDI	48
Lake whitefish	.EE.K---VL.LL...V.L.S.GCC	...Y.MN..	...ATG.L.DTQDNM	48
Gilthead sea bream	.APQTSNLWILL..V.VMMMS.GCC	...Y.....	...DL..L.DTLGNI	50
Clustal Consensus	* : : : *	*****: ** ***		
Japanese anchovy	MEGLPRRGARGCGSDTRDAANQERPSTLEQLISMSRANEVYD----			88
American shad	.....K.SASL...EY..GSPYK..DR...LN..EGE.VA.-----			86
African catfish	A.EI...S.YL.--YVAVSPRNK.FR.KD.LTFVAG-R.IEE----			94
Japanese medaka	IR-.LNSNTPCSDLSHLEESSLAKIYRIKG.LGSVTE.KNG.RTYK-			91
Pejerrey	V..F.HMDAPCRVVGCA.ESPFAKIYRMKGFLGGVTDRENGRRVYKK			94
Japanese eel	I.E.QKLDTS-SLPSCN.LSPHITL.S.KEILANLADRETGRKNI--			91
Lake whitefish	A.D.LKIDPSCSLFGCA.VSPHAKMYR.RA.LASLADRSGLNNI--			93
Gilthead sea bream	I.RF.HVDSPCSVLGCVEEPHPV.MYRMKGF.G--ERDIGHRMYYKK			95
Clustal Consensus	. : .	. : .		

## (B) GnRH2

	Signal peptide	GnRH2 Decapeptide	GnRH-associated peptide	
Japanese anchovy	MACGYRWVLLAVALFLGLVLSGA	QHWSHGWTYPG	GKRDVDTFNSAQVSE	49
Pejerrey	---MS.L...LVL..YV.AQ..Y.	.....	...EL.S.STSEI..	46
African catfish	.VSVC.LL.V..L..C.QAQ..FS	.....	...EI.SYS.PEI.G	49
Japanese medaka	---MS.L...LG..YV.AQ..QA	.....	...EL.S.---E..	43
Japanese eel	.VNTG.L..ILG..C..AQ..LC	.....	...EL.SLST.E.L.	49
Lake whitefish	.VSA.L.FMLGL..C..AQ..SS	.....	...EL.S.TTSEI..	49
Gilthead sea bream	-M.VS.L...LGL..CV.AQ..NG	.....	...EL.S.GTSEI..	48
Clustal Consensus	* : : ** : .**	***** ***:**	: :	
Japanese anchovy	EIKLCEAGECSYLRFQRRNLLKSILLEALTREFQ-RRK			86
African catfish	.....L.T.I....IDT.A.K.-K.			86
Japanese medaka	.M....T....M....SF.RN.V.D.A..L.-K..			80
Pejerrey	.N.....Q.V.RN.V.D.A..L.-K..			83
Japanese eel	....DG.....KS...N...D.A...RK..			87
Lake whitefish	.....I..N...D.A...E-K..			86
African cichlid	.....SI.RN...D.A..L.-K..			85
Gilthead sea bream	.....T...SV.RN...D.A..L.-K..			85
Clustal Consensus	* ***: *****: * * .*:.*::*:.*::: **			

## (C) GnRH3

	Signal peptide	GnRH3 Decapeptide	GnRH-associated peptide	
Japanese anchovy	MEQGR--LVLLLVLACACKECVC	QHWSYGNLPG	GKRSIGGELEATFRMD	48
Japanese medaka	.DVSSKVV.QV.L..LVVQVTL.	.....	...V.-....I..G	49
Pejerrey	.ASSRVM.QV.L..LVVQVSL.	.....	...V.-....I..G	49
Lake whitefish	.DLSSRTV.QVVV.VLVAQVTL.	.....	...V.-....I..G	49
African cichlid	.A.SRVIMQV.L..LVVQVTL.	.....	...V.-....I..G	49
Gilthead sea bream	.ASSRVT.QV.L..LVVQVTL.	.....	...V.-....I..G	49
Clustal Consensus	*: . : :*: . : .	***** ***:** *****:***		
Japanese anchovy	AG-----DTLIPLTAEKLQFNDAIDDIENAVRRGRPLRLRLD			89
Japanese medaka	T.RVVSLLPEDASQ.Q.R.RQYNL.N.GSTYFD--KK.FMSQ----			90
Pejerrey	T.GVVSLLPEEASAQIQ.RFR.YSV.N..SSHLDTW.KKKV.E-----			91
Lake whitefish	T.GEVALPEETSAAHVS.R.R.Y.V.S-----KKMPHK-----			82
African cichlid	T.GVVSLLPEEASAQIQ.R.R.YNI.N..SSHFD--KK.FPNN-----			90
Gilthead sea bream	T.GVVSLLPEEASAQIQ.R.R.YNV.K..SSPFD--KK.FPNK-----			90
Clustal Consensus	: * : : : *			

**Fig. 2.** Sequence alignment of the amino acid sequences of GnRH1 (A), GnRH2 (B), and GnRH3 (C). Identical amino acids are indicated by dots. Black lines indicate the amino acids corresponding to signal peptide and GnRH-associated peptide; and GnRH decapeptide is highlighted. GenBank accession numbers of the GnRH sequences are presented in Fig. 3.

in water. The sections were then treated with 1% cresyl violet solution for 10 min followed by washing in water for 10 min and dehydrated in ascending series of ethanol, dipped in xylene and coverslipped using DPX Mounting medium.

### Observation of slides

All slides were examined with an Olympus BX 51 microscope and photographed digitally. To achieve optimal images, all digitally captured images were adjusted for auto contrast in Adobe Photoshop 7. The images presented in results represent both male and female fish, as there was no major difference between the sexes.

### Reverse transcription-polymerase chain reaction (RT-PCR)

The expression of GnRH1 and GnRH3 transcripts in olfactory bulb (OB) of adult spermiating male and late vitellogenic female fish was examined using RT-PCR. Total RNAs were extracted from OB of 10 individuals (six male and four female), as described previously. For RT-PCR detection, 460 ng of the total RNA from OB were reverse-transcribed using superscript III Reverse Transcriptase (Invitrogen) and random hexamers (Takara Bio Inc., Japan). The first-strand cDNAs were used as templates for PCR, using gene specific primers designed from open reading frame regions of Japanese anchovy GnRH1 and GnRH3 cDNAs (Table 1). All precautionary measures were taken to avoid false-positive results (Guilgur et al., 2007). The PCR amplification comprised activation of AmpliTaqGold at 95°C for 9 min and then 35 cycles of 95°C for 30 sec, 62°C for 30 sec, and 72°C for 30 sec. RT-PCR analysis of  $\beta$ -actin mRNA was also performed for each sample and served as an internal control. Distilled water was used as a negative control to exclude any contamination from buffers and tubes. All PCR products were analysed using 3% agarose gels stained with ethidium bromide.

## RESULTS

### GnRH cDNAs sequences

The nucleotide sequence of cDNAs encoding the Japanese anchovy GnRH1 (hrGnRH), GnRH2 (cGnRH-II), and GnRH3 (sGnRH) were cloned and sequenced (Fig. 1). The full-length Japanese anchovy GnRH1 cDNA (GenBank accession no. JX406273) was 495 bp, excluding the poly-A tail, and contained an ORF of 267 bp encoding a precursor protein of 88 deduced aa with a predicted signal peptide of 22 aa. Two putative polyadenylation signal (AATAAA) were observed in the GnRH1 cDNA sequence; 1<sup>st</sup> and 2<sup>nd</sup> polyadenylation signal was recognized at 47 and 23 bp upstream of the poly-A tail region, respectively (Fig. 1A). The full-length Japanese anchovy GnRH2 cDNA (GenBank accession no. JX406274) consists of 637 bp, excluding the poly-A tail, and contained an ORF of 261 bp encoding a precursor protein of 86 deduced aa with a predicted signal peptide of 24 aa. A putative polyadenylation signal (AATAAA) was recognized at 17 bp upstream of the poly-A tail (Fig. 1B). The full-length Japanese anchovy GnRH3 cDNA (GenBank accession no. JX406275) contained 366 bp, excluding the poly-A tail, having an ORF of 270 bp encoding a precursor protein of 89 deduced aa with a predicted signal peptide of 21 aa. A putative polyadenylation signal (AATAAA) was recognized at 11 bp upstream of the poly-A tail (Fig. 1C).

The three GnRH cDNAs found in the Japanese anchovy consisted of the characteristic signal peptides [GnRH1, 1–22 residues; GnRH2, 1–24 residues and GnRH3, 1–21 residues], GnRH decapeptides [GnRH1, 23–32 residues; GnRH2, 25–34 residues and GnRH3, 22–31 residues], cleavage site [Gly-Lys-Arg (G-K-R); GnRH1, 33–35 resi-

dues; GnRH2, 35–37 residues and GnRH3, 32–34 residues], and GnRH-associated peptides (GAP) [GnRH1, 36–88 residues; GnRH2, 38–86 residues and GnRH3, 35–89 residues].

### Comparison of GnRH amino acid sequences of Japanese anchovy with other teleosts

The theoretical translation of three isoforms of Japanese anchovy GnRH cDNAs aligned with the GnRH amino acid sequences of representative species as shown in Fig. 2. The identities among the deduced amino acid sequences of GnRH precursors of the Japanese anchovy and other representative teleost species are presented in Table 2. The amino acid identity of Japanese anchovy GnRH1 ranges from 23.3–56.8% when compared with other teleost GnRH1 precursors. The American shad (a clupeiform species) GnRH1 (herring type) showed the highest sequence identity of 56.8%, whereas Japanese medaka (beloniformes) GnRH1 (medaka type) showed the lowest identity of 23.3%. The Japanese anchovy GnRH2 isoform showed 62.7–66.2% identity with the homologs of other representative species, with the highest amino acid identity to lake whitefish (66.2%) and the lowest to African catfish, Pejerrey, and Japanese medaka (62.7%). The Japanese anchovy GnRH3 amino acid sequence showed lower homology (35.0–40.2%) with other representative species than that of other two GnRH isoforms. The highest identity was found with Gilt-head sea bream and African cichlid (40.2%) and the lowest to lake whitefish (35.0%).

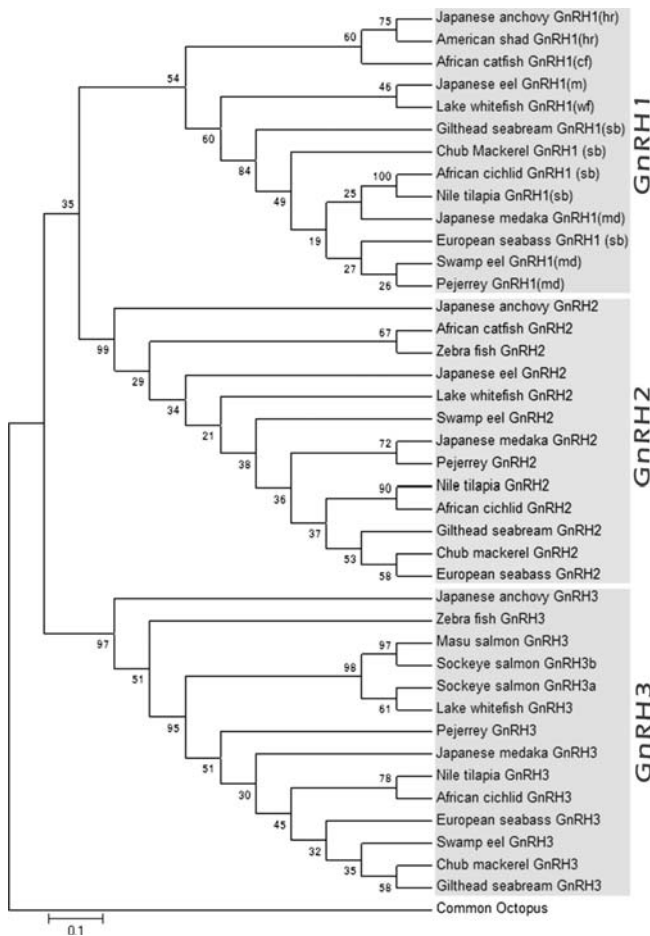
### Phylogenetic analysis

An unrooted phylogenetic tree based on the amino acid sequences of GnRH precursors revealed three major groupings of vertebrate GnRHs (GnRH1, GnRH2, and GnRH3;

**Table 2.** Amino acid sequence identity (%) of GnRH isoforms of the Japanese anchovy with those of other teleosts.

GnRH forms	Species	Percentage of identity (%)			References
		Japanese anchovy			
		GnRH1	GnRH2	GnRH3	
GnRH1 (hr)	American shad	56.8	21.5	21.0	Abraham (2004)
GnRH1 (sb)	Gilthead seabream	25.7	20.2	22.3	Gothilf et al. (1996)
GnRH1 (cf)	African catfish	37.5	21.5	17.8	Bogerd et al. (1994)
GnRH1 (m)	Japanese eel	27.9	22.1	20.0	Okubo et al. (1999)
GnRH1 (sb)	African cichlid	25.5	19.5	20.7	White et al. (1995)
GnRH1 (wf)	Lake whitefish	26.8	21.0	21.7	Vickers et al. (2004)
GnRH1 (pj/md)	Pejerrey	26.5	21.6	19.8	Guilgur et al. (2007)
GnRH1 (md/pj)	Japanese medaka	23.3	20.8	18.8	Okubo et al. (2000)
GnRH2	Gilthead seabream	26.9	63.9	24.7	Gothilf et al. (1996)
	African catfish	23.3	62.7	21.5	Bogerd et al. (1994)
	Japanese eel	25.5	65.5	24.5	Okubo et al. (1999)
	African cichlid	25.8	65.1	24.7	White et al. (1995)
	Lake whitefish	26.6	66.2	22.5	Vickers et al. (2004)
	Pejerrey	26.9	62.7	21.7	Guilgur et al. (2007)
	Japanese medaka	23.5	62.7	20.0	Okubo et al. (2000)
GnRH3	Gilthead seabream	20.6	25.0	40.2	Gothilf et al. (1996)
	African cichlid	20.6	25.0	40.2	White et al. (1995)
	Lake whitefish	15.4	20.8	35.0	Vickers et al. (2004)
	Pejerrey	20.8	23.7	39.1	Guilgur et al. (2007)
	Japanese medaka	21.6	26.0	38.1	Okubo et al. (2000)

Fig. 3). The Japanese anchovy hrGnRH precursor fits with GnRH1 group; while Japanese anchovy cGnRH-II and sGnRH precursors, each fitted with GnRH2 and GnRH3 group of the same GnRH isoforms from other teleost species.



**Fig. 3.** Phylogenetic analyses were conducted in MEGA4 software based on amino acid alignment of the sequences of GnRH1, GnRH2, and GnRH3 in teleost fish. The evolutionary history was inferred using the neighbour-joining method. The percentages of replicate trees in which the associated taxa clustered together in the bootstrap tests (10,000 replicates) are shown next to the branches. Octopus GnRH (*Octopus vulgaris*) was used as an outgroup. The GenBank accession number of the sequences: Japanese anchovy (GnRH1 JX406273, GnRH2 JX406274, and GnRH3 JX406275); American shad (GnRH1 AF536381); African catfish (GnRH1 X78049 and GnRH2 X78047); Japanese eel (GnRH1 AB026989 and GnRH2 AB026990); lake whitefish (GnRH1 AY245104, GnRH2 AY245102, and GnRH3, AY245103); gilthead sea bream (GnRH1 SAU30320, GnRH2, U30325, GnRH3 U30311); African cichlid (GnRH1 AF076961, GnRH2, AF076962, and GnRH3, AF076963); Nile tilapia (GnRH1 AB101665, GnRH2, AB101666, and GnRH3, AF101667); Japanese medaka (GnRH1 AB041333, GnRH2 AB041330, and GnRH3 AB041332); chub mackerel (GnRH1 HQ108193, GnRH2 HQ108194, GnRH3 HQ108195); Swamp eel (GnRH1 AY858056, GnRH2, AY858054, and GnRH3, AY858055); European sea bass (GnRH1 AF224279, GnRH2 AF224282, and GnRH3 AF224280); Pejerrey (GnRH1 AY744689, GnRH2 AY744687, and GnRH3 AY744688); Zebrafish (GnRH2 AY094357 and GnRH3 AJ304429); sockeye salmon (GnRH3a D31868 and GnRH3b D31869); masu salmon (GnRH3 S44614) and Octopus (AB037165).

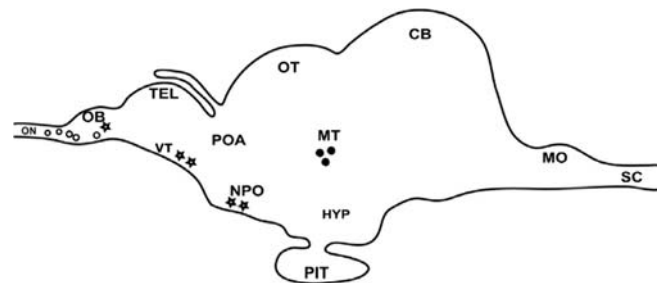
### In-situ hybridization (ISH)

The three different riboprobe of GnRHs recognized their respective GnRH isoforms. All the ISH analyses were performed in both sexes, and their overall distribution pattern resembled in both sexes. The distribution of three GnRH mRNAs in the Japanese anchovy brain is summarized schematically in Fig. 4. For identifying brain regions, where GnRH mRNAs were localized, we referred brain atlas of Medaka (Ishikawa et al., 1999).

In the sagittal brain sections, GnRH1 mRNA-expressing neurons were detected in the ventral telencephalon (VT), nucleus preopticus (NPO) of the preoptic area (POA), and the anterior olfactory bulb (OB) regions. No hybridization signal was detected when sections were hybridized with the sense riboprobes (data not shown). GnRH1 neurons were distributed continuously in a horizontal layer in the VT of anterior POA (Fig. 5A, B); less number of GnRH1 neurons was localized in the anterior OB in comparison to the POA region (Fig. 5C). GnRH1 neurons were also localized in the NPO of POA (Fig. 5D). Fig. 5E showed GnRH1 neurons in the VT that were counterstained with Nissl stain. Nissl counterstained GnRH1 neurons in the OB are shown in Fig. 5F.

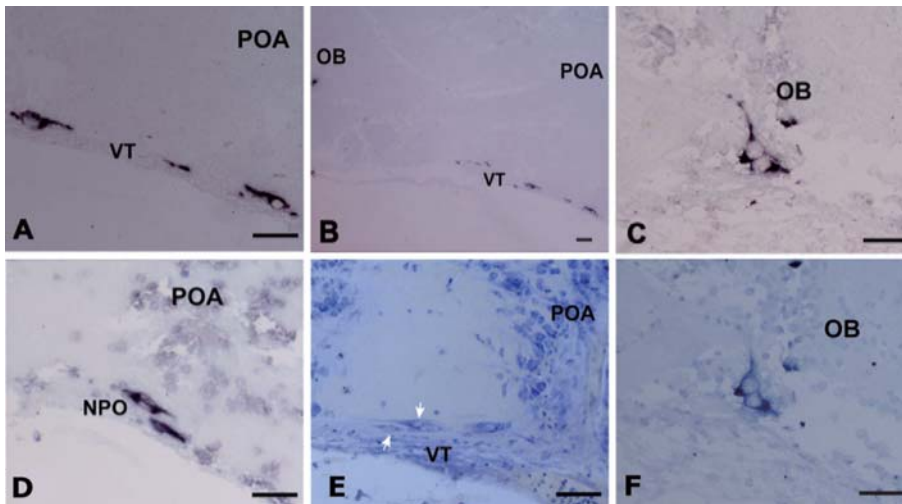
GnRH2 mRNA synthesizing neurons were localized in the nucleus of the medial longitudinal fasciculus (nMLF) of the midbrain tegmentum (MT) region (Fig. 6). Two or three GnRH2 neurons were observed in the nMLF (Fig. 6A). GnRH2 neurons were tightly arranged in the nMLF of MT (Fig. 6B); however, a cluster of GnRH2 neurons were observed in the nMLF (Fig. 6C) of different individual brains. Fig. 6D is the counterstained section of Fig. 6A, showing GnRH2 cells in the nMLF with Nissl counterstained. There was no hybridization signal when sections were hybridized only with the GnRH2 mRNA sense riboprobe (Fig. 6E). Figure 6F shows Nissl staining in GnRH2 cells in the nMLF of MT.

GnRH3 neurons were localized in the OB, olfactory nerve (ON), and transitional area between OB and ON (Fig. 7). High GnRH3 mRNA expression, in terms of both number of cells and signal intensity, was observed in the ventral OB region (Fig. 7A, B), whereas GnRH3 cells observed in the ON area were few in number (Fig. 7C). Figure 7D shows the GnRH3 neurons in the OB and ON that were counterstained

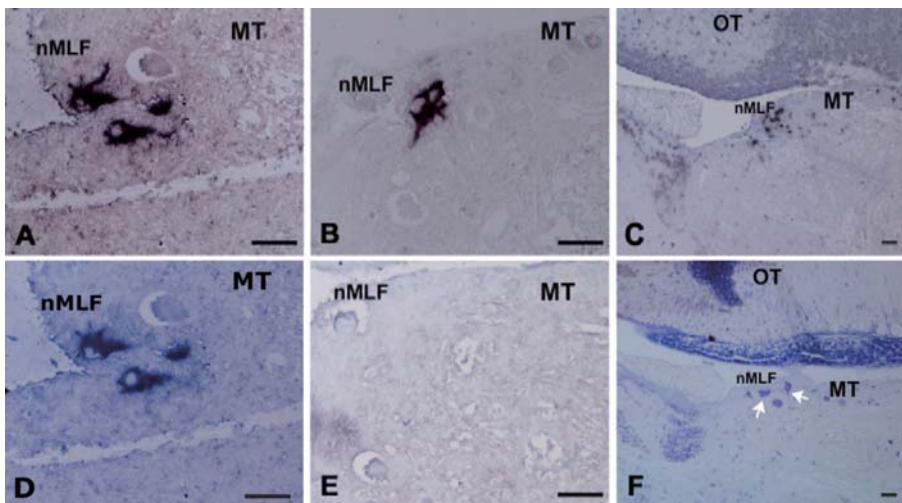


**Fig. 4.** Schematic illustration of the distribution of three GnRHs neurons in the brain of Japanese anchovy. GnRH1, GnRH2, and GnRH3 neurons are indicated with stars, closed circles, and open circles, respectively. CB, cerebellum; HYP, hypothalamus; MO, medulla oblongata; MT, midbrain tegmentum; NPO, nucleus preopticus; OB, olfactory bulb; ON, olfactory nerve; OT, optic tectum; PIT, pituitary; POA, preoptic area; SC, spinal cord; TEL, telencephalon; VT, ventral telencephalon.

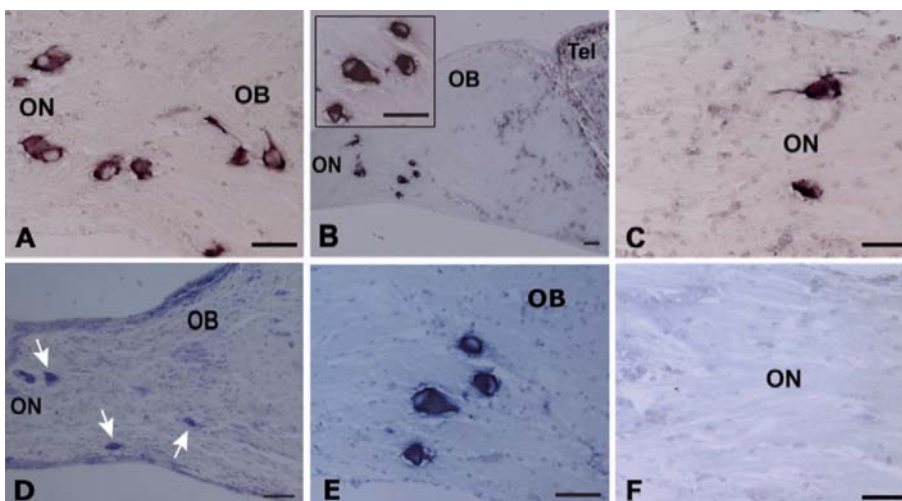




**Fig. 5.** Distribution of GnRH1 mRNA hybridization signals in the sagittal brain section of Japanese anchovy. (A) GnRH1 neurons in the ventral telencephalon (VT) of the anterior preoptic area (POA) hybridized with GnRH1 antisense riboprobe. (B) Low magnification picture of A. (C) GnRH1 mRNA hybridization signals in the anterior olfactory bulb (OB). (D) GnRH1 hybridization signals in nucleus preopticus (NPO) of POA. (E) Sagittal brain section showing GnRH1 neurons (arrows) in the VT stained with Nissl stain. (F) Nissl counter stained adjacent section (hybridized with sense probe) of (C), showing staining in GnRH1 mRNA positive cells in the anterior OB. Scale bars = 100  $\mu$ m.

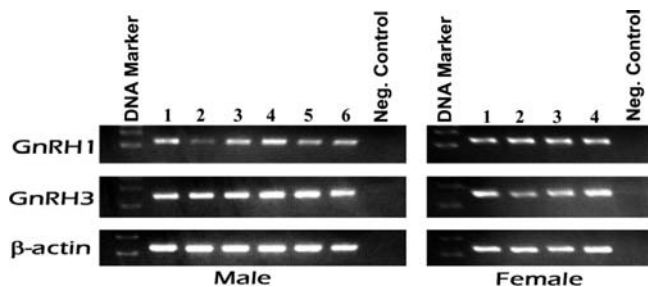


**Fig. 6.** Distribution of GnRH2 mRNA hybridization signals in sagittal section of the midbrain tegmentum (MT) of the Japanese anchovy brain. (A–C) GnRH2 neurons in the nucleus of the medial longitudinal fasciculus (nMLF) that hybridized with GnRH2 antisense riboprobe. (D) Nissl counterstained adjacent section (hybridized with sense probe) of (A) showing staining in GnRH2 cells in the nMLF. (E) Adjacent sagittal section of (B) hybridized with the GnRH2 sense riboprobe, showing no hybridization signal. (F) Sagittal brain section showing GnRH2 neurons (arrows) in the nMLF of MT that stained with Nissl stain. Scale bars = 100  $\mu$ m.



**Fig. 7.** Distribution of GnRH3 mRNA hybridization signals in sagittal section of the olfactory region of the Japanese anchovy brain. Sagittal brain section showing GnRH3 neurons in the olfactory region that hybridized with GnRH3 antisense riboprobe; (A) ventral olfactory bulb (OB), olfactory nerve (ON), and transitional region of OB and ON, (B) the OB and ON regions; the inset figure is at higher magnification, (C) the ON. (D) Sagittal brain section showing GnRH3 mRNA-positive cells (arrows) stained with Nissl staining. (E) Nissl counterstained adjacent section (hybridized with sense probe) of (B) showing staining in GnRH3 mRNA-positive cells in the OB. (F) Adjacent sagittal section of (C) hybridized with the GnRH3 sense riboprobe, showing no hybridization signal. Scale bars = 100  $\mu$ m.





**Fig. 8.** RT-PCR analysis for the distribution of GnRH1 and GnRH3 transcripts in the olfactory bulb (OB) tissue of the brain of adult spermiating male and late vitellogenic female Japanese anchovy. The quality of the mRNA was confirmed by parallel amplification of  $\beta$ -actin. The numbers in the figure represent different individual male and female fish, respectively.

with Nissl. Fig. 7E is the Nissl counterstained section of Fig. 7B, showing GnRH3 neurons in the OB. Hybridization with only GnRH3 sense riboprobe showed no hybridization signal in the OB and ON (Fig. 7F). In the OB, GnRH3 and GnRH1 neurons were detected in the ventral OB and anterior OB, respectively.

#### Distribution of GnRH1 and GnRH3 mRNAs in the Olfactory bulb (OB)

RT-PCR analysis revealed that both the GnRH1 and GnRH3 transcripts were distributed in the OB region of Japanese anchovy brain (Fig. 8). The intensity of GnRH1 transcript was lower than the intensity of GnRH3 transcript.

#### DISCUSSION

In the present study, three GnRH cDNAs were cloned and sequenced from the brain of Japanese anchovy, and their distribution was analyzed using ISH. A previous report by Abraham (2004) reported cloning and sequencing of full-length cDNAs of all three GnRH isoforms from another clupeiform fish, but was unsuccessful except for the isolation of hrGnRH isoform. To our knowledge, this is the first report on cloning and sequencing of all three GnRH isoforms in a clupeiform fish.

The Japanese anchovy GnRH isoforms exhibited same sequence features as that of other known GnRH isoforms: a signal peptide at the N-terminus, the GnRH decapeptide, a conserved processing tri-peptide and the GnRH-associated peptide regions at the C-terminus. These conserved sequence features suggest that all these GnRH isoforms have a common ancestral origin. Alignment analysis indicated that the amino acid sequences of Japanese anchovy hrGnRH, cGnRH-II, and sGnRH isoforms grouped with other teleost GnRH1, GnRH2, and GnRH3 isoforms, respectively (Fig. 2). Organization of all three GnRH isoform clades in the present phylogenetic tree supports an expected relationship among fishes based on teleost evolution (Nelson, 1994). Based on the analysis of phylogenetic tree, it is found that there are three main lineages in the GnRH tree; GnRH1, GnRH2, and GnRH3. This observation agrees with the hypothesis of Dubois (2002) regarding GnRH evolution. In addition, phylogenetic analysis showed that the Japanese anchovy hrGnRH clusters with other known teleost GnRH1 isoforms (mGnRH, cfGnRH, wfGnRH, sbGnRH, and

mdGnRH), suggesting that the Japanese anchovy hrGnRH isoform is a homolog of GnRH1. Further, it is found that hrGnRH has close phylogenetic relationship with cfGnRH. As expected, the Japanese anchovy GnRH2 and GnRH3 clustered with other teleost GnRH2 and GnRH3 isoforms, respectively (Fig. 3). To better understand the functional and physiological relevance of multiple GnRH isoforms, it is essential to know the localization and distribution pattern of GnRH isoforms in the brain and pituitary (Mousa and Mousa, 2003). In this study, differential distribution of three GnRH isoforms was demonstrated at mRNA levels by ISH using specific RNA probes. It was found that the three GnRH isoforms of Japanese anchovy were differentially expressed in different brain regions, with the exception of both GnRH1 and GnRH3 in the OB. GnRH1 neurons were predominant in the POA and VT regions. On the other hand, GnRH3 neurons were abundant in the OB and ON regions, while GnRH2 neurons were restricted to the nMLF of the MT region. Similar expression patterns were also reported in other perciform fishes such as European sea bass, *Dicentrarchus labrax* (González-Martínez et al., 2001) and Atlantic croaker (Mohamed et al., 2005).

The most interesting finding of the present study is the localization of GnRH1 and GnRH3 neurons in the olfactory bulb region. The distribution of GnRH1 neurons in the anterior OB, POA, and VT regions of the Japanese anchovy brain were similar as that of American cichlid, *Cichlasoma dimerus* (Pandolfi et al., 2005), European sea bass, (González-Martínez et al., 2001, 2002), and Atlantic croaker (Mohamed et al., 2005). RT-PCR analysis also indicated presence of GnRH1 and GnRH3 transcripts in OB of the Japanese anchovy brain, suggesting no possible cross-reaction of GnRH1 and GnRH3 probes. However, it is unclear whether GnRH1 neurons localized in the OB of Japanese anchovy innervate anterior pituitary regions. Recently, we have developed an antibody against hrGnRH decapeptide and future studies will help to clarify this observation. Previous studies in American cichlid, European seabass and Atlantic croaker detected GnRH1 producing neurons in the OB regions; however, it is still unclear whether these neurons innervate anterior pituitary as that POA GnRH1 neuronal population in these teleost fish. Further, these two GnRH populations were shown to co-exist in both OB and POA regions in the Atlantic croaker (Mohamed et al., 2005), South American cichlid (Pandolfi et al., 2005), and European sea bass (González-Martínez et al., 2001).

GnRH3 neurons of Japanese anchovy were localized in the ON, ventral OB, and transitional area between the OB and ON. Similar pattern of GnRH3 neuronal localization was also observed in the Atlantic croaker (Mohamed et al., 2005) and European sea bass (González-Martínez et al., 2001). GnRH2 neurons were exclusively detected in the nMLF of MT region. A similar localization of GnRH2 neurons were reported in several vertebrate species, including teleosts (Zandbergen et al., 1995; González-Martínez et al., 2001; Mohamed et al., 2005; Pandolfi et al., 2005). The presence of GnRH2 neurons in the MT was first reported in the platyfish, *Xiphophorus* sp. (Münz et al., 1981) and subsequently confirmed in the goldfish (Kah et al., 1986), masu salmon (Amano et al., 1991) and other teleost fishes. Presence of GnRH2 has now been reported in all vertebrate classes,

with the exception of the sea lamprey, *Petromyzon marinus* (Kavanaugh et al., 2008).

Although the developmental origins of GnRH1 and GnRH3 neurons are still controversial, GnRH3 neurons are thought to originate in the olfactory placode (Parhar et al., 1998; Wong et al., 2004). Pandolfi et al. (2005) showed that both forebrain GnRHs, i.e. GnRH1 and GnRH3, first arise in rostral olfactory regions in the South American cichlid. On the other hand, based on the expression pattern and ontogenic studies, several authors proposed that GnRH1 neurons originate from the POA, while GnRH3 neurons derive from the olfactory placode (Gothliff et al., 1996; Parhar et al., 1998; White and Fernald, 1998; Senthilkumaran et al., 1999; Pandolfi et al., 2005). In the Atlantic croaker and European sea bass, it has been shown that GnRH1 (sbGnRH) neurons first originate in the OB and VT regions and later migrate to their final position in the POA and HYP (Mohamed et al., 2005; González-Martínez et al., 2001). Recent studies indicate that, in mammals, GnRH1 neurons are derived from the neural crest (Forni et al., 2011).

The role of GnRH3 is not well established especially in multiple-spawning fishes with three different GnRH isoforms (Guilgur et al., 2007). The anatomical distribution of GnRH3 system in the Japanese anchovy brain suggests serving neuromodulatory role, as proposed in other teleost fishes, such as the modulation of sexual behaviour (Yamamoto et al., 1997; Ogawa et al., 2006). As GnRH2 neurons do not innervate into the pituitary of most teleosts (Senthilkumaran et al., 1999; Amano et al., 2002), GnRH2 seems not to be directly involved in gonadotropin secretion, especially in fishes expressing three GnRH isoforms; rather, it may have neuromodulatory function in fish, such as the electrical activity of vasotocin (VT) and isotocin (IT) neurons in the brain (Saito et al., 2003), conventional synaptic transmission (Kinoshita et al., 2007), the modulation of pineal function or melatonin release (Servili et al., 2010), and sensory processing of sexual or communicative stimuli (Maruska and Tricas, 2011). In a mammalian species (musk shrew, *Suncus murinus*), it has been demonstrated that GnRH2 coordinates energy and reproductive behaviour, including regulation of food intake (Temple et al., 2003; Kauffman and Rissman, 2004). GnRH1 (sbGnRH) neurons in the NPO are the main source of innervation into the pituitary (Senthilkumaran et al., 1999; Selvaraj et al., 2009) and GnRH1 neurons in the teleost preoptic nucleus innervate the pituitary (Prasada Rao, 1999). GnRH-expressing neurons in the POA project mainly to the adenohypophysis and are known to regulate gonadotropin secretion in fishes (Kim et al., 1995). The present result of the localization of GnRH1 (hrGnRH) in the POA suggests that hrGnRH neuronal axons might innervate into the pituitary and regulates gonadal development and maturation. However, this possibility will be examined in this species by immunohistochemistry using specific antibody to hrGnRH decapeptide.

In conclusion, the result of the present study demonstrates existence of three GnRH isoforms in the brain of clupeiform fish, Japanese anchovy. Distribution analysis indicated conservation of brain regions expressing three GnRH isoforms as that of other teleosts. However, both GnRH1 and GnRH3 neurons were localized in the OB region of Japanese anchovy. In addition, the localization of

hrGnRH (GnRH1) in the POA suggests that GnRH1 may play a functional role in the gonadotropin regulation. The results of the present study provide important evidence for the presence of three GnRH isoforms in primitive teleosts.

## ACKNOWLEDGMENTS

We thank the members of the Laboratory of Marine Biology, Kyushu University, Japan for their help during fish sampling. This work was supported by a grant (Grant number: 23658163) for scientific research from the Ministry of Education, Culture, Sports, Science and Technology (MEXT), Japan.

## REFERENCES

- Abraham E (2004) Studies on reproductive biology and endocrinology in a primitive teleostei, the American shad (*Alosa sapidissima*), MSc. Dissertation, University of Maryland, USA, p 106
- Adams BA, Vickers ED, Warby C, Park M, Fischer WH, Craig AG, et al. (2002) Three forms of Gonadotropin-Releasing Hormone, including a novel forms, in a basal Salmonid, *Coregonus clupeaformis*. Biol Reprod 67: 232–239
- Amano M, Oka Y, Aida K, Okumoto N, Kawashima S, Hasegawa Y (1991) Immunocytochemical demonstration of salmon GnRH and chicken GnRH-II in the brain of masu salmon, *Oncorhynchus masou*. J Comp Neurol 314: 587–597
- Amano M, Takahashi A, Yamanome T, Okubo K, Aida K, Yamamori K (2002) Molecular cloning of three cDNAs encoding different GnRHs in the brain of barfin flounder. Gen Comp Endocrinol 126: 325–333
- Bogerd J, Zandbergen T, Anderson E, Goos H (1994) Isolation, characterization and expression of cDNAs encoding the catfish-type and chicken-II-type gonadotropin-releasing hormone precursors in the African catfish. Eur J Biochem 222: 541–549
- Carolsfeld J, Powell JF, Park M, Fischer WH, Craig AG, Chang JP, et al. (2000) Primary structure and function of three gonadotropin-releasing hormones, including a novel form, from an ancient teleost, herring. Endocrinology 141: 505–512
- Chang JP, Johnson JD, Sawisky GR, Grey CL, Mitchell G, Booth M, et al. (2009) Signal transduction in multifactorial neuroendocrine control of gonadotropin secretion and synthesis in teleosts—studies on the goldfish model. Gen Com Endocrinol 161: 42–52
- Dubois EA, Zandbergen MA, Peute J, Goos HJ (2002) Evolutionary development of three gonadotropin-releasing hormone (GnRH) systems in vertebrates. Brain Res Bull 57: 413–418
- Fernald RD, White RB (1999) Gonadotropin-releasing hormone genes: phylogeny, structure, and functions. Front Neuroendocrinol 20: 224–240
- Forni PE, Taylor-Burds1 C, Senkus Melvin V, Williams T, Wray1 S (2011) Neural crest and ectodermal cells intermix in the nasal placode to give rise to GnRH-1 neurons, sensory neurons and olfactory ensheathing cells. J Neurosci 31: 6915–6927
- González-Martínez D, Madigou T, Zmora N, Anglade I, Zanuy S, Zohar Y, et al. (2001) Differential expression of three different prepro-GnRH (gonadotropin-releasing hormone) messengers in the brain of the European sea bass (*Dicentrarchus labrax*). J Comp Neurol 429: 144–155
- González-Martínez D, Zmora N, Zanuy S, Sarasquete C, Elizur A, Kah O, Muñoz-Cueto JA (2002) Developmental expression of three different prepro-GnRH (gonadotropin-releasing hormone) messengers in the brain of the European sea bass (*Dicentrarchus labrax*). J Chem Neuroanat 23: 255–267
- Gothliff Y, Muñoz-Cueto JA, Sagrillo CA, Selmanoff M, Chen TT, Kah O, et al. (1996) Three forms of gonadotropin-releasing hormone in a teleost fish: cDNA characterization and brain localization. Biol Reprod 55: 636–645
- Guilgur LG, Orti G, Strobl-Mazzulla PH, Fernandino JI, Miranda LA,

- Somoza GM (2007) Characterization of the cDNAs encoding three GnRH forms in the pejerrey fish *Odontesthes bonariensis* (Atheriniformes) and the evolution of GnRH precursors. *J Mol Evol* 64: 614–627
- Hall TA (1999) BioEdit: a user-friendly biological sequence alignment editor and analysis program for Windows 95/98/NT. *Nucl Acids Symp Ser* 41: 95–98
- Ishikawa Y, Yoshimoto M, Ito H (1999) A brain atlas of a wild-type inbred strain of the medaka, *Oryzias latipes*. *Fish Biol J Medaka* 10: 1–26
- Kádár A, Wittmann G, Liposits Z, Fekete C (2009) Improved method for combination of immunocytochemistry and Nissl staining. *J Neurosci Methods* 184: 115–118
- Kah O, Breton B, Dulka JG, Nunez-Rodriguez J, Peter RE, Corrigan A, et al. (1986) A reinvestigation of the GnRH (gonadotropin-releasing hormone) system in the goldfish brain using antibodies to salmon GnRH. *Cell Tissue Res* 244: 327–337
- Kah O, Lethimonier C, Somoza G, Guilgur LG, Vaillant C, Lareyre JJ (2007) GnRH and GnRH receptors in metazoan: a historical, comparative, and evolutive perspective. *Gen Comp Endocrinol* 153: 346–364
- Kakizawa S, Kaneko T, Hirano T (1997) Effects of hypothalamic factors on somatolactin secretion from the organ-cultured pituitary of rainbow trout. *Gen Comp Endocrinol* 105: 71–78
- Kauffman AS, Rissman EF (2004) A critical role for the evolutionary conserved gonadotropin-releasing hormone II: mediation of energy status and female sexual behavior. *Endocrinology* 145: 3639–3646
- Kavanaugh SI, Nozaki M, Sower SA (2008) Origins of gonadotropin-releasing hormone (GnRH) in vertebrates: identification of a novel GnRH in a basal vertebrate, the sea lamprey. *Endocrinology* 149: 3860–3869
- Kim MH, Oka Y, Amano M, Kobayashi M, Okuzawa K, Hasegawa Y, et al. (1995) Immunocytochemical localization of sGnRH and cGnRH-II in the brain of goldfish, *Carassius auratus*. *J Comp Neurol* 356: 72–82
- Kinoshita M, Kobayashi S, Urano A, Ito E (2007) Neuromodulatory effects of gonadotropin-releasing hormone on retinotectal synaptic transmission in the optic tectum of rainbow trout. *Eur J Neurosci* 25: 480–484
- Kitano H, Irie S, Ohta K, Hirai T, Yamaguchi A, Matsuyama M (2011) Molecular cloning of two gonadotropin receptors and their distinct mRNA expression profiles in daily oogenesis of the wrasse *Pseudolabrus sieboldi*. *Gen Comp Endocrinol* 172: 268–278
- Mantua NJ, Hare SR (2002) The Pacific decadal oscillation. *J Oceanogr* 58: 35–44
- Marchant TA, Chang JP, Nahorniak CS, Peter RE (1989) Evidence that gonadotropin-releasing hormone also functions as a growth hormone-releasing factor in the goldfish. *Endocrinology* 124: 2509–2518
- Maruska KP, Tricas TC (2011) Gonadotropin-releasing hormone (GnRH) modulates auditory processing in the fish brain. *Horm Behav* 59: 451–464
- Matsuyama M, Selvaraj S, Nyuji M, Ohga H (2013) Involvement of Brain-Pituitary-Gonadal axis on regulation of reproductive cycle in female chub mackerel. In “Sexual Plasticity and Gametogenesis in Fishes” Ed by B Senthikumar, Nova Science Publishers, USA, pp 251–273
- Mohamed JS, Thomas P, Khan IA (2005) Isolation, cloning, and expression of three prepro-GnRH mRNAs in Atlantic croaker brain and pituitary. *J Comp Neurol* 488: 384–395
- Mousa MA, Mousa SA (2003) Immunohistochemical localization of gonadotropin releasing hormones in the brain and pituitary gland of the Nile perch, *Lates niloticus* (Teleostei, Centropomidae). *Gen Comp Endocrinol* 130: 245–255
- Münz HP, Stumpf WE, Jennes L (1981) LHRH system in the brain of platyfish. *Brain Res* 221: 1–13
- Nelson JS (1994) *Fishes of the World*. 3rd ed, Wiley, New York
- Northcutt RG, Muske LE (1994) Multiple embryonic origins of gonadotropin-releasing hormone (GnRH) immunoreactive neurons. *Dev Brain Res* 15: 279–290
- Ogawa S, Akiyama G, Kato S, Soga T, Sakuma Y, Parhar IS (2006) Immunoneutralization of gonadotropin releasing hormone type-III suppresses male reproductive behavior of cichlids. *Neurosci Lett* 403: 201–205
- Ohkubo M, Katayama S, Shimizu A (2010) Molecular cloning and localization of the luteinizing hormone  $\beta$  subunit and glycoprotein hormone  $\alpha$  subunit from Japanese anchovy *Engraulis japonicus*. *J Fish Biol* 77: 372–387
- Okubo K, Suetake H, Aida K (1999) Expression of two gonadotropin-releasing hormone (GnRH) precursor genes in various tissues of the Japanese eel and evolution of GnRH. *Zool Sci* 16: 471–478
- Okubo K, Amano M, Yoshiura M, Suetake H, Aida K (2000) A novel form of gonadotropin-releasing hormone in the medaka, *Oryzias latipes*. *Biochem Biophys Res Comm* 276: 298–303
- O'Neill DF, Powell JFF, Standen EM, Youson JH, Warby CM, Sherwood NM (1998) Gonadotropin-releasing hormone (GnRH) in ancient teleosts, the bonytongue fishes: putative origin of salmon GnRH. *Gen Comp Endocrinol* 112: 415–425
- Onuma T, Ando H, Koide N, Okada H, Urano A (2005) Effects of salmon GnRH and sex steroid hormones on expression of genes encoding growth hormone/prolactin/somatolactin family hormones and pituitary-specific transcription factor in masu salmon pituitary cells in vitro. *Gen Comp Endocrinol* 143: 129–141
- Pandolfi M, Muñoz-Cueto JA, Lo Nostro FL, Downs JL, Paz DA, Maggese MC, Urbanski HF (2005) The GnRH systems of *Cichlasoma dimerus* (Perciformes, Cichlidae) revisited: A localization and developmental study using antibodies and riboprobes to the GnRH-associated peptides. *Cell Tissue Res* 321: 219–232
- Parhar IS, Soga T, Ishikawa Y, Nagahama Y, Sakuma Y (1998) Neurons synthesizing gonadotropin-releasing hormone mRNA subtypes have multiple developmental origins in the medaka. *J Comp Neurol* 401: 217–226
- Pham KX, Amano M, Amiya N, Kurita Y, Shimizu A, Yamamori K (2007) Immunohistochemical localization of three GnRH systems in brain and pituitary of Japanese flounder. *Fish Sci* 73: 1113–1122
- Prasada Rao PD (1999) Hypophysiotropic neurons in the brain of teleosts. In “Neural Regulation in the Vertebrate Endocrine System” Ed by PD Prasada Rao, RE Peter, Kluwer Academic/Plenum Publishers, New York, pp 23–40
- Roch GJ, Busby ER, Sherwood NM (2011) Evolution of GnRH: diving deeper. *Gen Comp Endocrinol* 171: 1–11
- Saito D, Hasegawa Y, Urano A (2003) Gonadotropin-releasing hormones modulate electrical activity of vasotocin and isotocin neurons in the brain of rainbow trout. *Neurosci Lett* 351: 107–110
- Schwanzel-Fukuda M (1999) Origin and migration of luteinizing hormone-releasing hormone neurons in mammals. *Microsc Res Tech* 44: 2–10
- Selvaraj S, Kitano H, Fujinaga Y, Amano M, Takahashi A, Shimizu A, et al. (2009) Immunological characterization and distribution of three GnRH forms in the brain and pituitary gland of chub mackerel (*Scomber japonicus*). *Zool Sci* 26: 828–839
- Selvaraj S, Kitano H, Amano M, Nyuji M, Kaneko K, Yamaguchi A, Matsuyama M (2012a) Molecular characterization and expression profiles of three GnRH forms in the brain and pituitary of adult chub mackerel (*Scomber japonicus*) maintained in captivity. *Aquaculture* 356–357: 200–210
- Selvaraj S, Kitano H, Amano M, Ohga H, Yoneda M, Yamaguchi A, Matsuyama M (2012b) Increased expression of kisspeptin and

- GnRH forms in the brain of scombroid fish during final ovarian maturation and ovulation. *Reprod Biol Endocrinol* 10: 64
- Senthilkumaran B, Okuzawa K, Gen K, Ookura T, Kagawa H (1999) Distribution and seasonal variations in levels of three native GnRHs in the brain and pituitary of perciform fish. *J Neuroendocrinol* 11: 181–186
- Servili A, Lethimonier C, Lareyre J, López-Olmeda JF, Sánchez-Vázquez FJ, Kah O, Muñoz-Cueto JA (2010) The highly conserved gonadotropin-releasing hormone-2 form acts as a melatonin-releasing factor in the pineal of a teleost fish, the European sea bass *Dicentrarchus labrax*. *Endocrinology* 151: 2265–2275
- Shahjahan M, Hamabata T, Motohashi E, Doi H, Ando H (2010) Differential expression of three types of gonadotropin-releasing hormone genes during the spawning season in grass puffer, *Takifugu niphobles*. *Gen Comp Endocrinol* 167: 153–163
- Tamura K, Dudley J, Nei M, Kumar S (2007) MEGA4: Molecular Evolutionary Genetics Analysis (MEGA) software version 4.0. *Mol Bio Evol* 24: 1596–1599
- Temple JL, Millar RP, Rissman EF (2003) An evolutionarily conserved form of gonadotropin-releasing hormone coordinates energy and reproductive behavior. *Endocrinology* 144: 13–19
- Vickers ED, Laberge F, Adams BA, Hara TJ, Sherwood NM (2004) Cloning and localization of three forms of gonadotropin-releasing hormone including the novel whitefish form, in a salmonid, *Coregonus clupeaformis*. *Biol Reprod* 70: 1136–1146
- Watanabe Y (2007) Latitudinal variation in the recruitment dynamics of small pelagic fishes in the western north Pacific. *J Sea Res* 58: 46–58
- Weber GM, Powell JFF, Park M, Fischer WH, Craig AG (1997) Evidence that gonadotropin-releasing hormone (GnRH) functions as a prolactin releasing factor in a teleost fish (*Oreochromis mossambicus*) and primary structure for three native GnRH molecules. *J Endocrinol* 155: 121–132
- White RB, Fernald R (1998) Ontogeny of gonadotropin-releasing hormone (GnRH) gene expression reveals a distinct origin for GnRH-containing neurons in the midbrain. *Gen Comp Endocrinol* 112: 322–329
- White SA, Kasten TL, Bond CT, Adelman JP, Fernald RD (1995) Three gonadotropin-releasing hormone genes in one organism suggest novel roles for an ancient peptide. *Proc Natl Acad Sci USA* 92: 8363–8367
- Wirsig-Wiechmann CR (2001) Function of gonadotropin-releasing hormone in olfaction. *Keio J Med* 50: 81–85
- Wong TT, Gothilf Y, Zmora N, Kight KE, Meiri I, Elizur A, Zohar Y (2004) Developmental expression of three forms of gonadotropin-releasing hormone and ontogeny of the hypothalamic–pituitary–gonadal axis in gilthead seabream (*Sparus aurata*). *Biol Reprod* 71: 1026–1035
- Yamamoto N, Oka Y, Kawashima S (1997) Lesions of gonadotropin releasing hormone-immunoreactive terminal nerve cells: effects on the reproductive behavior of male dwarf gouramis. *Neuroendocrinol* 65: 403–412
- Zandbergen MA, Kah O, Bogerd J, Peute J, Goos HJTH (1995) Expression and distribution of two gonadotropin-releasing hormones in the catfish brain. *Neuroendocrinology* 62: 571–578

(Received August 31, 2012 / Accepted August 9, 2013)