

Description of *Cithaeron dippenarae* sp. n. from Morocco (Araneae: Cithaeronidae)

Authors: Bosmans, Robert, and Keer, Johan van

Source: African Invertebrates, 56(2) : 319-323

Published By: KwaZulu-Natal Museum

URL: <https://doi.org/10.5733/afin.056.0206>

The BioOne Digital Library (<https://bioone.org/>) provides worldwide distribution for more than 580 journals and eBooks from BioOne's community of over 150 nonprofit societies, research institutions, and university presses in the biological, ecological, and environmental sciences. The BioOne Digital Library encompasses the flagship aggregation BioOne Complete (<https://bioone.org/subscribe>), the BioOne Complete Archive (<https://bioone.org/archive>), and the BioOne eBooks program offerings ESA eBook Collection (<https://bioone.org/esa-ebooks>) and CSIRO Publishing BioSelect Collection (<https://bioone.org/csiro-ebooks>).

Your use of this PDF, the BioOne Digital Library, and all posted and associated content indicates your acceptance of BioOne's Terms of Use, available at www.bioone.org/terms-of-use.

Usage of BioOne Digital Library content is strictly limited to personal, educational, and non-commercial use. Commercial inquiries or rights and permissions requests should be directed to the individual publisher as copyright holder.

BioOne is an innovative nonprofit that sees sustainable scholarly publishing as an inherently collaborative enterprise connecting authors, nonprofit publishers, academic institutions, research libraries, and research funders in the common goal of maximizing access to critical research.

Description of *Cithaeron dippenaarae* sp. n. from Morocco (Araneae: Cithaeronidae)

Robert Bosmans^{1*} and Johan van Keer²

¹Terrestrial Ecology Unit, Ledeganckstraat 35, 9000 Gent, Belgium; Rop_bosmans@telenet.be

²Bormstraat 204 bus 3, 1880 Kapelle-op-den-Bos, Belgium; johan.van.keer1@telenet.be

*Corresponding author

ABSTRACT

Cithaeron dippenaarae sp. n. is described from both sexes. The species occurs in stony regions in the south of Morocco.

KEY WORDS: Morocco, Araneae, *Cithaeron*, new species.

INTRODUCTION

The genus *Cithaeron* O. Pickard-Cambridge, 1872 presently includes six species: *C. contentum* Jocqué & Russell-Smith, 2011 from South Africa, *C. delimbatus* Strand, 1906 from East Africa, *C. indicus* Platnick & Gajbe, 1994 from India, *C. jocqueorum* Platnick, 1991 from Ivory Coast, *C. praedonius* O. Pickard-Cambridge, 1872 from Greece, Libya to Malaysia, Australia, USA, Cuba and Brazil, and *C. reimoseri* Platnick, 1991 from Ethiopia (Jocqué & Russell-Smith 2011; Platnick 1991, 2002; World Spider Catalog 2015). A seventh species, *C. dippenaarae* sp. n. is described in the present paper. A male and female were collected at localities approximately 350 km from each other, but in view of the small number of species in the genus, they are thought to belong to the same species.

MATERIAL AND METHODS

The material treated in this paper was collected during a field trip to Morocco. Specimens were examined and illustrated using a Wild M5 stereomicroscope. Further details were studied using an Olympus CH-2 stereoscopic microscope with a drawing tube.

Photographs were taken with a Moticam 5MP camera attached to a Realux stereoscopic microscope. Somatic morphology measurements were taken using a scale reticule in the eyepiece of the stereomicroscope and are in millimetres. Measurements of the legs are taken from the dorsal side.

Structures of the male left palpus are depicted. They were detached and transferred to glycerol for examination under the microscope. Female genitalia were excised using sharpened needles and then transferred to clove oil for examination under the microscope. Later, palps and epigynes were returned to 70 % ethanol. The type material is deposited in the Koninklijk Belgisch Instituut voor Natuurwetenschappen, Brussels (KBIN).

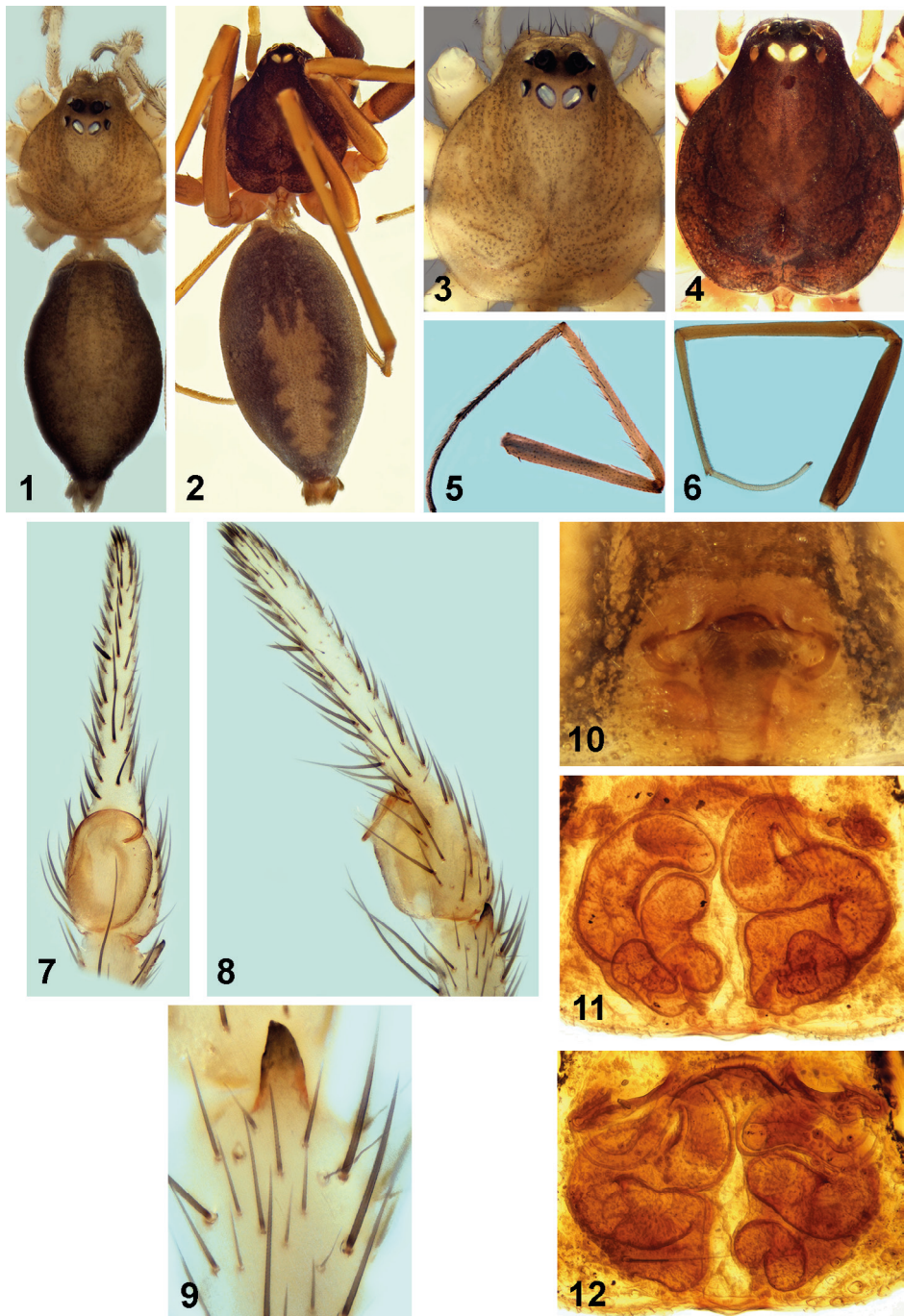
Abbreviations:

AE, AM, AL: anterior, anterior median and anterior lateral eyes.

PE, PM, PL: posterior, posterior median and posterior lateral eyes.

MOQ: median ocular quadrangle

Fe, Pa, Ti, Mt, Ta: femur, patella, tibia, metatarsus, tarsus.



Figs 1–12. *Cithaeron dippenaarae* sp. n.: (1) male, dorsal aspect; (2) female, dorsal aspect; (3) male prosoma, dorsal view; (4) female prosoma, dorsal view; (5) leg of male, lateral view; (6) leg of female, lateral view; (7) male palp, ventral view; (8) idem, retrolateral view; (9) palpal tibia, retrolateral view; (10) epigyne, ventral view; (11) vulva, dorsal view; (12) idem, ventral view.

TAXONOMY

Family Cithaeronidae Simon, 1893

Genus *Cithaeron* O. Pickard-Cambridge, 1872***Cithaeron dippenarae* sp. n.**

Figs 1–16

Etymology: The species name is dedicated to our colleague Ansie Dippenaar-Schoeman from the Plant Protection Research Institute in Pretoria, in honour of her work on African spiders.

Diagnosis: *Cithaeron dippenarae* sp. n. is easily distinguished from all other *Cithaeron* species by the strongly elongated cymbium and flattened bulbus in the male, and females by the position of the wide copulation ducts and spermathecae posteriorly to the epigynal hood.

Description:

Measurements: ♂: Total length 4.80; prosoma 2.18 long, 0.98 wide. ♀: Total length 6.80; prosoma 2.60 long, 2.02 wide.

Colour (female only, male is recently moulted and uniformly pale grey, Figs 1–4): Prosoma dark chestnut brown, with darkened striae; chelicerae as prosoma, distal third orange brown; sternum orange brown, slightly darkened at sides; legs yellow to orange brown, femora (especially Fe I) laterally darkened; palp of female light yellow; abdomen dark grey, posterior half with lobed, pale grey spot, not reaching spinnerets.

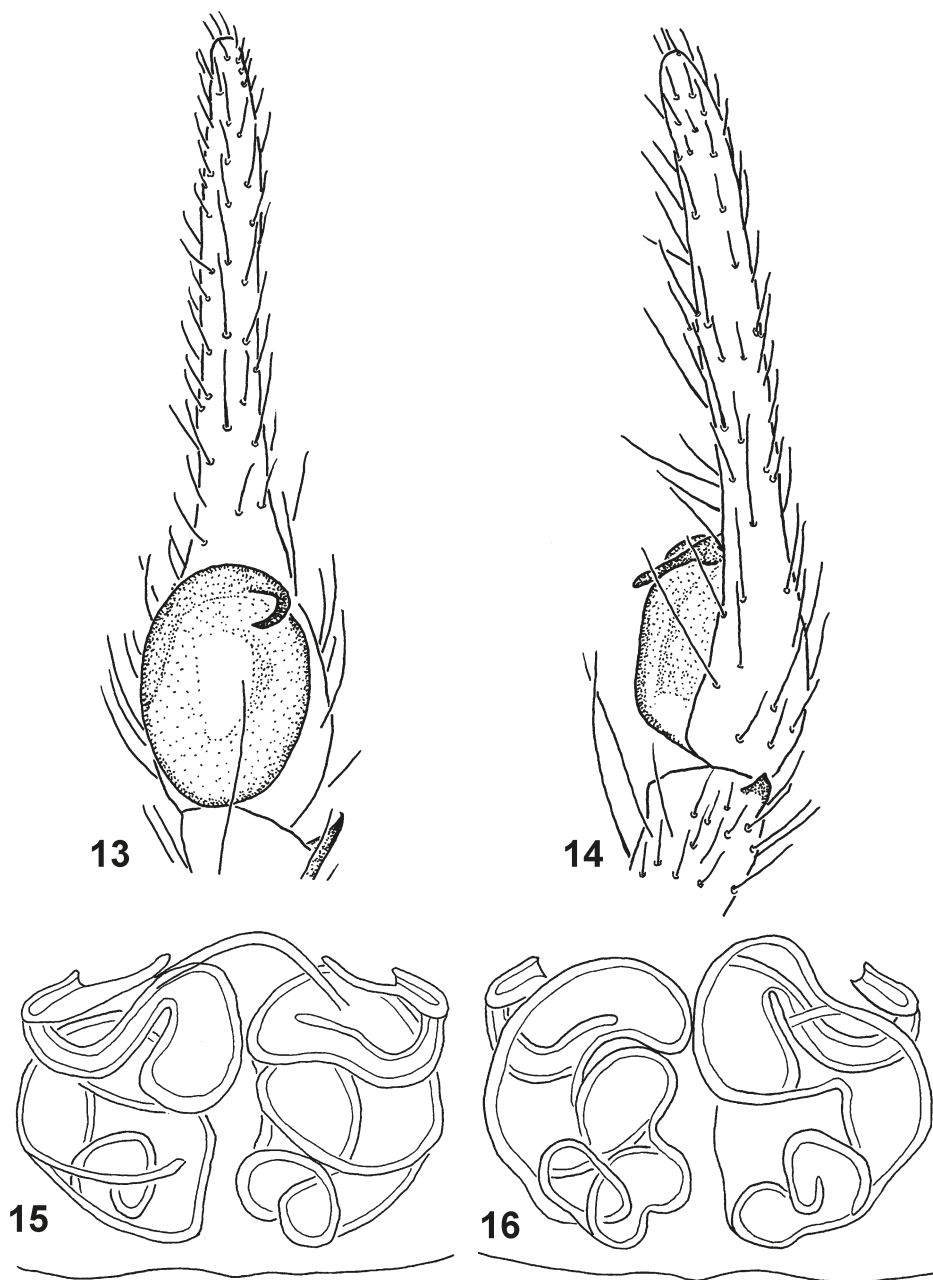
Prosoma: Fovea short, situated at posterior end of prosoma; anterior eyes rounded, posterior median eyes oval, posterior lateral eyes drop-like in male, rounded in female; AM on small blackened tubercles; both rows of eyes procurved. Eye measurements: Male: AM 0.12; AL 0.09; PM 0.17; PL 0.14; AM–AM 0.15, AM–AL 0.04, PM–PM 0.04, PM–PL 0.06; MOQ: length/width 0.10, anterior/posterior width 0.12. Female: AM 0.17; AL 0.13; PM 0.18; PL 0.10; AM–AM 0.10, AM–AL 0.025, PM–PM 0.02, PM–PL 0.02; MOQ: length/width 0.10, anterior/posterior width 0.11.

Chelicerae: With scattered black setae; fang short, cheliceral teeth absent.

Legs: Without distinct spines. Male tibiae apart from regular short hairs ventrally with a series of 12–15 irregularly placed longer hairs, continuing on basal third of metatarsi, much shorter or absent in females; distal 2/3 of metatarsi and tarsi in both sexes densely covered with short hairs (Figs 5–6).

Leg measurements:

Male (holotype)	Fe	Pa	Ti	Mt	Ta	Total
I	3.72	0.84	3.44	3.20	2.28	13.48
II	-	-	-	-	-	-
III	2.82	0.37	2.52	2.78	1.40	9.89
IV	3.44	0.88	3.00	2.94	2.28	12.54
palp	1.28	0.36	0.43	-	1.01	3.08
Female (paratype)	Fe	Pa	Ti	Mt	Ta	Total
I	3.68	1.04	3.34	2.78	2.34	12.60
II	3.56	1.08	3.47	3.47	2.00	13.58
III	2.96	0.81	2.72	2.62	1.58	10.69
IV	3.88	0.94	3.52	2.96	1.88	13.18



Figs 13–16. *Cithaeron dippenarae* sp. n.: (13) male palp, ventral view; (14) idem, retrolateral view; (15) vulva, ventral view; (16) vulva, dorsal view.



Fig. 17. Distribution of *Cithaeron dippenaarae* sp. n.

Abdomen long oval.

Male palp (Figs 7–9, 13, 14): Tibia with short, retrolateral triangular apophysis. Cymbium elongated, three times as long as wide and three times as long as maximal diameter of bulbus; bulbus flattened, oval, 1.4 longer than wide; embolus semi-circular, situated at tip of bulbus, pointing in postero-ventral direction.

Female epigyne (Figs 10–12, 15, 16): With wide, triangular antero-median hood, bordering an oval, slightly depressed postero-median atrium; copulatory openings situated at lateral side of hood; vulva with wide semi-circular copulatory ducts, leading to wide, coiled spermathecae.

Holotype ♂: MOROCCO: *Meknès-Tafilelet* Prov.: 8 km south Rissani, road to Merzouga (31°17'05"N 04°09'13"E), 750 m, 21.iv.2012, leg. R. Bosmans, under stone (KBIN).

Paratype ♀: MOROCCO: *Sous-Massa-Drâa* Prov.: South Ait-ou-Mribete (29°53'36"N 09°35'36"E), 80 m, 27.iv.2012, leg. J. van Keer, stony river bank of Oued Massa, under stones (KBIN).

Distribution: Known from two localities in the south of Morocco (Fig. 17).

Biology: At both localities, the species was collected under stones in the vicinity of water bodies. The male and female were both collected in April.

ACKNOWLEDGEMENTS

Pierre Oger is thanked for providing us with the excellent photos. Tony Russell-Smith and an anonymous reviewer are thanked for their comments on the manuscript.

REFERENCES

- JOCQUÉ, R. & RUSSELL-SMITH, A. 2011. A new species of *Cithaeron* from South Africa (Araneae: Cithaeronidae). *Bulletin of the British Arachnological Society* **15**: 209–210.
- PLATNICK, N.I. 1991. A revision of the ground spider family Cithaeronidae (Araneae, Gnaphosoidea). *American Museum Novitates* **3018**: 1–13.
- 2002. A revision of the Australasian ground spiders of the families Ammoxenidae, Cithaeronidae, Gallieniellidae, and Trochanteriidae (Araneae: Gnaphosoidea). *Bulletin of the American Museum of Natural History* **271**: 1–243.
- WORLD SPIDER CATALOG 2015. *World Spider Catalog, Version 16*. Bern: Natural History Museum. (<http://wsc.nmbe.ch>; accessed 20/02/2015).

