

Spatial point pattern analysis of traces (SPPAT): An approach for visualizing and quantifying site-selectivity patterns of drilling predators

Authors: Rojas, Alexis, Dietl, Gregory P., Kowalewski, Michał, Portell, Roger W., Hendy, Austin, et al.

Source: Paleobiology, 46(2) : 259-271

Published By: The Paleontological Society

URL: <https://doi.org/10.1017/pab.2020.15>

The BioOne Digital Library (<https://bioone.org/>) provides worldwide distribution for more than 580 journals and eBooks from BioOne's community of over 150 nonprofit societies, research institutions, and university presses in the biological, ecological, and environmental sciences. The BioOne Digital Library encompasses the flagship aggregation BioOne Complete (<https://bioone.org/subscribe>), the BioOne Complete Archive (<https://bioone.org/archive>), and the BioOne eBooks program offerings ESA eBook Collection (<https://bioone.org/esa-ebooks>) and CSIRO Publishing BioSelect Collection (<https://bioone.org/csiro-ebooks>).

Your use of this PDF, the BioOne Digital Library, and all posted and associated content indicates your acceptance of BioOne's Terms of Use, available at www.bioone.org/terms-of-use.

Usage of BioOne Digital Library content is strictly limited to personal, educational, and non-commercial use. Commercial inquiries or rights and permissions requests should be directed to the individual publisher as copyright holder.

BioOne is an innovative nonprofit that sees sustainable scholarly publishing as an inherently collaborative enterprise connecting authors, nonprofit publishers, academic institutions, research libraries, and research funders in the common goal of maximizing access to critical research.

Article

Spatial point pattern analysis of traces (SPPAT): An approach for visualizing and quantifying site-selectivity patterns of drilling predators

Alexis Rojas , Gregory P. Dietl , Michał Kowalewski , Roger W. Portell ,
Austin Hendy , and Jason K. Blackburn 

Abstract.—Site-selectivity analysis of drilling predation traces may provide useful behavioral information concerning a predator interacting with its prey. However, traditional approaches exclude some spatial information (i.e., oversimplified trace position) and are dependent on the scale of analysis (e.g., arbitrary grid system used to divide the prey skeleton into sectors). Here we introduce the spatial point pattern analysis of traces (SPPAT), an approach for visualizing and quantifying the distribution of traces on shelled invertebrate prey, which includes improved collection of spatial information inherent to drillhole location (morphometric-based estimation), improved visualization of spatial trends (kernel density and hotspot mapping), and distance-based statistics for hypothesis testing (K -, L -, and pair correlation functions). We illustrate the SPPAT approach through case studies of fossil samples, modern beach-collected samples, and laboratory feeding trials of naticid gastropod predation on bivalve prey. Overall results show that kernel density and hotspot maps enable visualization of subtle variations in regions of the shell with higher density of predation traces, which can be combined with the maximum clustering distance metric to generate hypotheses on predatory behavior and anti-predatory responses of prey across time and geographic space. Distance-based statistics also capture the major features in the distribution of traces across the prey skeleton, including aggregated and segregated clusters, likely associated with different combinations of two modes of drilling predation, edge and wall drilling. The SPPAT approach is transferable to other paleoecologic and taphonomic data such as encrustation and bioerosion, allowing for standardized investigation of a wide range of biotic interactions.

Alexis Rojas. Integrated Science Lab, Department of Physics, Umeå University, Umeå 32611, Sweden. E-mail: alexis.rojas-briceno@umu.se

Gregory P. Dietl. Paleontological Research Institution, Ithaca, New York 14850, U.S.A.; and Department of Earth and Atmospheric Sciences, Cornell University, Ithaca, New York 14853, U.S.A. E-mail: gpd3@cornell.edu

Michał Kowalewski and Roger W. Portell. Division of Invertebrate Paleontology, Florida Museum of Natural History, University of Florida, Gainesville, Florida 32611, U.S.A. E-mails: mkowalewski@flmnh.ufl.edu, portell@flmnh.ufl.edu

Austin Hendy. Natural History Museum of Los Angeles County, 900 Exposition Boulevard, Los Angeles, California 90007, U.S.A. E-mail: ahendy@nhm.org

Jason K. Blackburn. Spatial Epidemiology and Ecology Research Laboratory, Department of Geography and Emerging Pathogens Institute, University of Florida, Gainesville, Florida 32611, U.S.A. E-mail: kblackburn@ufl.edu

Accepted: 12 March 2020

Data available from the Dryad Digital Repository: <https://doi.org/10.5061/dryad.z34tmpg90>

Introduction

Drilling predation on shelled marine invertebrates represents a unique opportunity to quantify biological interactions in ancient and modern marine environments. Predatory drillholes represent direct records of predatory attack and can potentially document diverse aspects of predator–prey interactions (e.g., Kitchell et al. 1981; Kitchell 1986; Dietl and

Alexander 2000; Kowalewski 2002; Hoffmeister et al. 2004; Rojas et al. 2017), although several assumptions and caveats need to be considered (e.g., Kowalewski 2002; Leighton 2002; Harper 2006; Klompmaker et al. 2019; Smith et al. 2019). Drillholes can provide valuable behavioral information regarding selectivity of predatory attacks in terms of prey species, prey size class, or drilling location on the prey skeleton (e.g., Kitchell 1986; Kowalewski 2002). Here, we

focus on site selectivity and illustrate a reproducible approach that can be applied to quantify spatial patterns in the distribution of predation traces on modern and fossil prey remains.

Modern studies (Dietl and Alexander 2000; Chiba and Sato 2012) as well as investigations based on the fossil record (Kelley 1988; Dietl et al. 2001) have shown that drilling predators can display high levels of spatial stereotypy, likely reflecting prey handling during the attack and/or prey morphology (Kabat 1990; Kingsley-Smith et al. 2003; Rojas et al. 2015). Whereas many studies have documented the spatial distribution of drillholes for various prey groups, approaches used to assess those spatial patterns have varied widely, including qualitative descriptions (Negus 1975) and a multitude of quantitative approaches (Kelley 1988; Kowalewski 1990; Anderson et al. 1991; Dietl and Alexander 2000; Hoffmeister and Kowalewski 2001). These methodological inconsistencies hamper our ability to compare outcomes across studies or conduct meta-analyses based on previously collected data. In addition, most of the methods for analyzing site selectivity in drilling predation were primarily developed to test the null hypothesis of a random distribution of traces across arbitrarily defined sectors of the prey skeleton using goodness-of-fit, chi-square or Kolmogorov-Smirnov statistics (Kelley 1988; Kowalewski 1990; Anderson et al. 1991), and diversity metrics such as the Shannon-Weaver index (Dietl et al. 2001). These approaches fail to exploit the high-resolution information locked up in the spatial relationship between drillhole locations and depend critically on an arbitrary grid system used to divide the prey skeleton into sectors (Johnson 1984; Kowalewski 2004). Recently, the nearest neighbor index, which requires no artificial partitioning scheme, was introduced by Alexander et al. (2007) and implemented by Casey et al. (2015) to test the null hypothesis that predation traces on the prey skeleton occur in a completely random fashion (complete spatial randomness [CSR] hypothesis). However, this approach was not designed to identify patterns that may occur at different spatial scales or distances measured on the prey skeleton, for example, aggregation at short distances and segregation at large distances.

The recognition that predation traces on prey skeletons are spatially explicit and can be mapped enables the development of a proxy for site selectivity in drilling predation based on spatial point process modeling (Baddeley et al. 2016). Here, we introduce the spatial point pattern analysis of traces (SPPAT), an approach for visualizing and quantifying the distribution of predation traces on shelled invertebrate prey, which includes improved collection of spatial information inherent to drillhole location, improved visualization of spatial trends, and distance-based statistics for hypothesis testing (see also Clapham et al. [2003], Mitchell and Butterfield [2018], and Mitchell et al. [2019] for examples that use a similar spatially explicit approach to describe the distribution of well-preserved Ediacaran fossils). We illustrate the SPPAT approach through case studies on museum samples of the Plio-Pleistocene venerid bivalve *Lirophora latilirata* (Conrad, 1841) from the Atlantic coastal plain of the United States, which has been previously used in studies on drilling predation (Hattori et al. 2014; Klomp-maker and Kelley 2015); drilling data from laboratory-based feeding trials of the tropical eastern Pacific naticid *Notocochlis unifasciata* (Lamarck, 1822) preying upon the venerid bivalve *Ilioichione subrugosa* (W. Wood, 1828); and modern beach-collected samples of *I. subrugosa* from Central America. The SPPAT approach provides tools for visualizing distribution patterns of predation traces on shelled invertebrate prey that could not have been retrieved from current methods and uses distance-based functions to quantify those patterns.

Material and Methods

Case Studies.—We used fossil samples, modern beach-collected samples, and laboratory feeding trials to illustrate the utility of the SPPAT approach in assessing site selectivity of drilling predators. First, fossil specimens of the abundant, commonly drilled venerid bivalve *L. latilirata* from the Plio-Pleistocene of the Atlantic coastal plain of the United States were obtained for site-selectivity analysis by conducting a survey of the Invertebrate Paleontology Collections in the Florida Museum of Natural History (FLMNH), University of

TABLE 1. Drilling data on museum samples of *Lirophora latilirata* and *Ilioichione subrugosa* compiled in this study.

*Stratigraphic context follows Lyons (1991) and Ward et al. (1991). Abbreviations: DF, drilling frequency.

Sample ID	Site	No. valves	No. drilled valves	DF	Geological unit*	Age*
UF137849	PB037	23	1	0.09	Bermont	Middle Pleistocene
UF137880	GL011	13	1	0.15	Bermont	Middle Pleistocene
UF137172	PB036	14	1	0.14	Bermont	Middle Pleistocene
UF131622	PB001	23	1	0.09	Bermont	Middle Pleistocene
UF131624	PB001	26	2	0.15	Bermont	Middle Pleistocene
UF131623	PB001	24	2	0.17	Bermont	Middle Pleistocene
UF127365	PB001	20	2	0.20	Bermont	Middle Pleistocene
UF131625	PB001	30	3	0.20	Bermont	Middle Pleistocene
UF30048	PB001	12	3	0.50	Bermont	Middle Pleistocene
UF145969	CH075	25	1	0.08	Caloosahatchee	Early Pleistocene
UF137856	CH044	21	2	0.19	Caloosahatchee	Early Pleistocene
UF206594	ZN022	115	13	0.23	Waccamaw	Early Pleistocene
UF217095	ZN022	55	5	0.18	Waccamaw	Early Pleistocene
UF217094	ZN022	48	5	0.21	Waccamaw	Early Pleistocene
UF217097	ZN022	48	5	0.21	Waccamaw	Early Pleistocene
UF217099	ZN022	64	7	0.22	Waccamaw	Early Pleistocene
UF217098	ZN022	56	4	0.14	Waccamaw	Early Pleistocene
UF206587	ZN022	55	13	0.47	Waccamaw	Early Pleistocene
UF217096	ZN022	53	5	0.19	Waccamaw	Early Pleistocene
UF157413	LN001	20	5	0.50	Jackson Bluff	Late Pliocene
UF157412	LN001	25	1	0.08	Jackson Bluff	Late Pliocene
UF157411	LN001	19	2	0.21	Jackson Bluff	Late Pliocene
UF157410	LN001	20	5	0.50	Jackson Bluff	Late Pliocene
UF157409	LN001	27	9	0.67	Jackson Bluff	Late Pliocene
UF157408	LN001	20	2	0.20	Jackson Bluff	Late Pliocene
UF157622	LN001	31	2	0.13	Jackson Bluff	Late Pliocene
UF157414	LN001	20	5	0.50	Jackson Bluff	Late Pliocene
UF147337	DA001	21	8	0.76	Pinecrest Beds	Late Pliocene
UF137167	CR021	13	2	0.31	Pinecrest Beds	Late Pliocene
UF157627	HG009	32	6	0.38	Pinecrest Beds	Late Pliocene
UF146228	CH051	42	2	0.10	Pinecrest Beds	Late Pliocene
UF157628	CH051	26	6	0.46	Pinecrest Beds	Late Pliocene
UF137878	OB002	25	4	0.32	Pinecrest Beds	Late Pliocene
UF144502	SO017	39	1	0.05	Pinecrest Beds	Late Pliocene
UF147358	DA001	35	3	0.17	Pinecrest Beds	Late Pliocene
UF161845	ZG038	79	8	0.20	Duplin	Pliocene
UF161844	ZG038	21	7	0.67	Duplin	Pliocene
UF164230	ZG047	29	1	0.07	Duplin	Pliocene
UF164234	ZG047	49	5	0.20	Duplin	Pliocene
UF164014	ZG047	37	2	0.11	Duplin	Pliocene
UF164012	ZG047	21	4	0.38	Duplin	Pliocene

Florida (specimen acronym UF). The museum survey was focused on bulk-collected specimen lots (41 lots containing 1376 specimens) that were associated with large collections (Table 1). Drilled specimens ($n = 166$; Table 1) of *L. latilirata* were identified by examining shells under a binocular microscope for the presence of complete naticid-like drillholes, which are typically beveled in shape, and categorized as the ichnospecies *Sedilichnus paraboloides* (Bromley 1981) (formerly *Oichnus paraboloides*). We used the *L. latilirata* case study to illustrate how the SPPAT approach can be used to quantify large-scale, temporal shifts in site-selective

behavior of drilling predators. The stratigraphic details of the fossil samples used in this study can be found in Supplementary Table S1.

Second, we reexamined data from Rojas et al. (2015) for 27 drilled specimens of the venerid bivalve *I. subrugosa* that were preyed upon by the naticid *N. unifasciata* in a laboratory setting and 89 drilled specimens of *I. subrugosa* that were target collected (Ottens et al. 2012) at two modern beach localities (Veracruz and El Palmar) in Panama, Central America (Table 1). We used the *I. subrugosa* case studies, that is, modern beach-collected samples and laboratory-based feeding trials in which numerous cases

of edge-drilling predation were identified, to illustrate how the SPPAT approach can be used to quantify small-scale (intravale) spatial variation in the relative importance of alternative shell-drilling behaviors (i.e., edge and wall drilling).

Quantifying Drilling Location.—Drilled valves were digitally photographed using a standard photogrammetric protocol adapted from Perea et al. (2008). All images were oriented such that the anteroposterior axis was horizontal to facilitate consistency in landmark data collection (Kolbe et al. 2011). The positions of the predatory drillholes were quantified using a two-dimensional morphometric approach proposed by Roopnarine and Beusink (1999) and adapted by Rojas et al. (2015) to assemble the collected drilling data into a standardized prey skeleton. The general procedure was based on the following pseudolandmarks identified on the external view of the valves and placed on the same plane (Supplementary Fig. S1): (1) point of maximum curvature of the ventral edge, (2) anterior end of the valve, (3) the beak on the outline, and (4) posterior end of the valve. A fifth point corresponds to the center of the predatory drill-hole. A line joining pseudolandmarks 2 and 4, located on the anterior and posterior margins of the bivalve shell, approximates maximum length of a prey specimen. Casey et al. (2015) adopted a similar approach to quantify drilling locations on the venerid bivalve *Mercenaria*. These pseudolandmarks do not correspond with specifically internal homologous traits of the prey, as in Roopnarine and Beussink (1999). Instead, they reflect the general external morphology of the prey skeleton, which is an important consideration for drilling predators when manipulating their prey (Kabat 1990; Kingsley-Smith et al. 2003; Rojas et al. 2015). Landmark coordinates obtained for left valves were inverted to compare directly with the right valves following Kowalewski (2004). The Bookstein baseline registration method for two-dimensional data (Bookstein 1986) was used to remove shell size, position information, and remaining orientation from the analyses using pseudolandmarks 1 and 3 as a baseline. This dataset, given the measured spatial locations of drillholes on the standardized

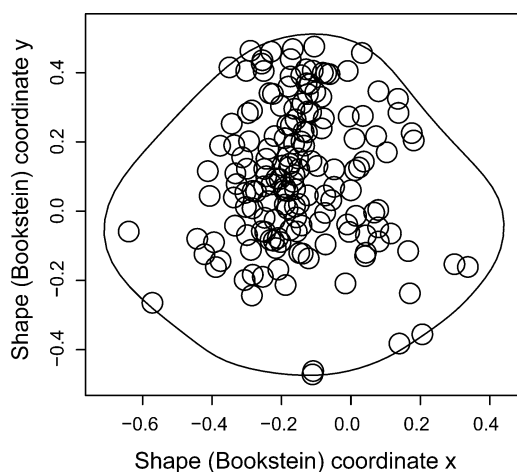


FIGURE 1. Spatial point pattern derived from pooled drilling data on Plio-Pleistocene specimens of the bivalve *Lirophora latilirata* from the Atlantic coastal plain.

prey skeleton (i.e., study area in Bookstein shape units), represents a spatial point pattern (Bivand et al. 2008) (Fig. 1). See Supplementary Table S1 for point-level attributes. The R functions for landmark-based morphometrics of Claude (2008) were used to carry out the morphometric analysis.

Creating Spatial Point Patterns of Drilling Locations.—A key feature of the SPPAT approach is the creation of a point pattern of drilling predation traces derived via geometric morphometrics. To accomplish this task, all landmark data on drillhole locations for *L. latilirata* and *I. subrugosa* were separately pooled and superimposed on a standardized skeleton to create a point pattern, that is, a representation of a given area containing a set of locations (hereafter referred to as “*L. latilirata* samples” and “beach-collected samples,” respectively; Figs. 2, 3). The pooled point pattern of predation traces on *L. latilirata* (Fig. 1) was further grouped into sub-patterns (sensu Baddeley et al. 2016) according to geologic age, which are also referred here as point patterns and used to illustrate temporal changes in site-selectivity patterns, including variations in alternative shell-drilling behaviors.

Kernel Density Estimation (KDE) and Hotspot Mapping.—KDE was used to visualize the spatial distribution of predation traces on the prey skeleton for the modern beach-collected and laboratory feeding trial samples of *I. subrugosa*.

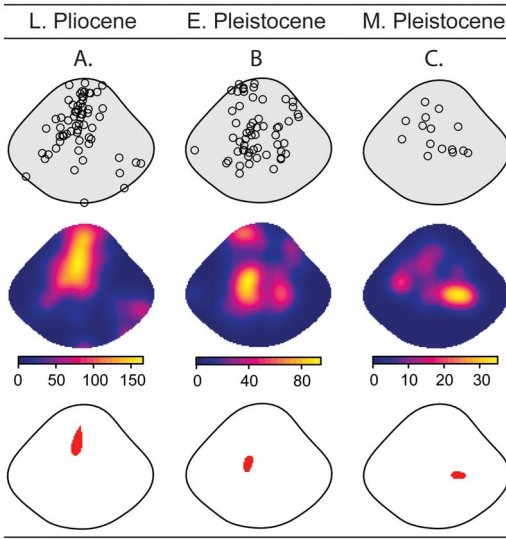


FIGURE 2. Point patterns, kernel density, and hotspot maps of drillholes on fossil samples of *Lirophora latilirata* from the Atlantic coastal plain grouped by time interval. A, Late Pliocene. B, Early Pleistocene. C, Middle Pleistocene. Kernel density estimated using drilling frequency (DF) as a weighting variable. Units of density maps are number of drillholes per area measured in square Bookstein shape units. Hotspots were detected from the kernel density map using as a threshold the highest 10% estimated values.

This technique fits a curved surface over each drilling location such that the surface is highest above the drillhole and zero at a specified distance (bandwidth, h) from the drillhole. Following Silverman (1986: p. 76, Eq. 4.5), the kernel density was mathematically expressed as:

$$f(x) = \frac{1}{nh} \cdot \sum_{i=1}^n \frac{K(x - X_i)}{h} \quad (1)$$

where $f(x)$ is the density value at drillhole location x , n is the number of drillholes, h is the bandwidth, $x - X_i$ is the distance to each drillhole location i , and K is the quadratic kernel function, which is defined as

$$K(x) = \frac{3}{4}(1 - x^2), \quad |x| \leq 1$$

$$K(x) = 0, \quad x > 1. \quad (2)$$

Because fossil samples of *L. latilirata*, unlike our modern beach-collected and laboratory feeding trial samples of *I. subrugosa*, came

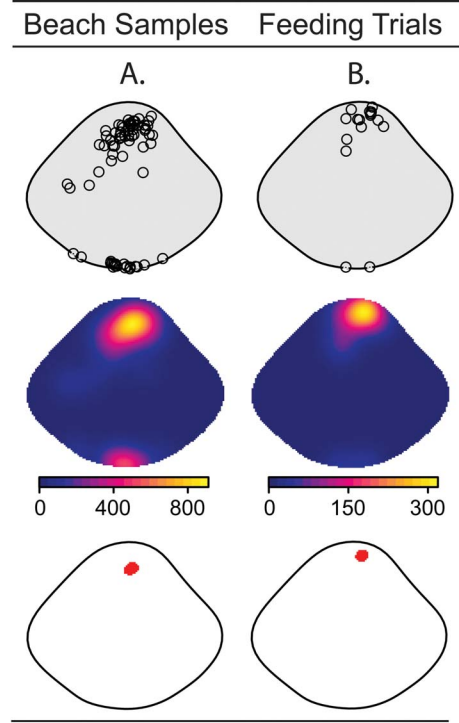


FIGURE 3. Point patterns, kernel density, and hotspot maps derived from drilling data on beach-collected samples of *Iliocheilone subrugosa* (Playa Veracruz and Playa El Palmar, eastern Pacific coast of Panama) and feeding trials of *Notochelis unifasciata* preying upon *I. subrugosa*. A, Beach samples. B, Feeding trial samples. Units of density maps are number of drillholes per area measured in square Bookstein shape units. Hotspots were detected from the kernel density map using as a threshold the highest 10% estimated values.

from several field surveys, and museum lots examined varied greatly in size, KDE estimates may be biased. Therefore, we implemented a correction for sampling effort using drilling frequency. Drilling frequency (DF) was calculated for each fossil lot l following Kowalewski (2002: p. 19, Eq. 5):

$$DF(l) = \frac{n_l}{0.5m_l}, \quad m_l \geq 1 \quad (3)$$

where n_l is the number of valves drilled in the museum lot l , and m_l is the total number of valves in the same lot l . DF was used to reweight the KDE estimated at each drillhole location x and thus to control for the role of different museum lots in the resulting site-selectivity

patterns. Drillholes from museum lots with higher DF were assigned greater weight and receive higher KDE estimates. This standard procedure for reweighting the contributions from the individual predatory traces can be used for density estimation when observations are sampled nonuniformly (Fieberg 2007). In our study, for instance, museum lots with large numbers of specimens and an unusually high occurrence of edge-drilling may bias density patterns when pooling drilling data.

The optimum bandwidth h_{opt} required for KDE was based on the number of predatory traces and the average distance from each trace to the mean center (e.g., standard distance) (Fotheringham et al. 2000). Descriptive statistics and parameters employed to calculate the optimum bandwidth h_{opt} used for the KDE are presented in Table 2. Because drillhole configurations are scaled and aligned on the baseline of coordinates (−0.5, 0) and (0.5, 0) derived from Bookstein registration, measurement units (e.g., millimeters) cannot be provided for the density maps. KDE was performed using the function *density.ppp* (grid spacing $\text{eps} = 0.01$ map units; $h = h_{\text{opt}}$; weights = DF) in the R package *Spatstat* v. 1.23-4 (Baddeley and Turner 2005). Based on the estimated density, preferences in drilling location by predators can be reliably characterized as hotspots of drilling traces on the prey skeleton. Operationally, hotspot areas were detected from the kernel estimate map using the highest 10% of kernel estimated values as a threshold (Nelson and Boots 2008).

Distance-based Statistical Analyses.—The spatial distribution of predation traces on a given prey skeleton may be classified as random (CSR), aggregated (individual traces are placed together delineating groups or clusters), or segregated (individual traces are placed farther apart

than they would be in CSR) or some combination of these patterns at different distances on the prey skeleton. Here we describe the *K*- and *L*-functions, which are used for hypothesis testing, and applied the maximum clustering distance measurement to indicate the distance on the prey skeleton at which traces were clustered.

We used Ripley’s *K*-function (Ripley 1976, 1977) to quantify the spatial point patterns of predation traces assembled here. This summary statistic is widely used to quantify deviations from CSR in a statistically consistent framework (Fotheringham et al. 2000; Baddeley et al. 2016). Following Ripley (1988), the estimate of *K*(*r*) employed in this study was mathematically expressed as:

$$K(r) = \frac{a}{n(n-1)} \sum_i \sum_j I(d_{ij} \leq r) e_{ij} \tag{4}$$

where *a* is the area of the standardized prey skeleton, *n* is the number of drillholes, and the sum is taken over all ordered pairs of drillholes *i* and *j* in the point pattern. *d_{ij}* is the distance between the two drillholes and *I* (*d_{ij}* ≤ *r*) is the indicator that equals 1 if the distance is less than or equal to *r*. The term *e_{ij}* is a standard correction factor to minimize potential bias from edge effects in estimating the *K*-function (Baddeley et al. 2016). The expected value of *K*(*r*) for a random Poisson distribution (*K_{pois}*) is πr^2 and deviations from this expectation indicate either an aggregated or segregated distribution. This function provides the average number of neighboring drillholes that lie within a distance *r* of a drillhole divided by the density of drillholes per unit area or intensity. Because it is adjusted for intensity, the *K*-function makes it possible to compare the degree of regularity between point patterns of drillhole locations with different average densities (Baddeley et al. 2016), including both temporal and spatial comparisons. To facilitate the visual assessment of the graphic output, we used Besag’s (1977) *L*-function, which transforms the *K*-function $K_{\text{pois}}(r) = \pi r^2$ to the straight-line $L_{\text{pois}}(r) = r$:

$$L(r) = \sqrt{\frac{k(r)}{\pi}}. \tag{5}$$

TABLE 2. Descriptive statistics used to calculate the optimum bandwidth (h_{opt}).

Parameter	Value
Mean center <i>x</i>	−0.158
Mean center <i>y</i>	0.087
Standard distance	0.261
Std- <i>x</i>	0.159
Std- <i>y</i>	0.208
h_{opt}	0.062

The square-root transformation stabilizes the variance of the empirical $L(r)$, making it easier to assess deviations from CSR and thus to evaluate the following scenarios: (1) null hypothesis [CSR]: $L(r) = r$; (2) alternative hypothesis 1 [aggregated]: $L(r) > r$; and (3) alternative hypothesis 2 [segregated]: $L(r) < r$. The nonparametric test for CSR in drillhole locations was constructed by simulating 999 random spatial patterns of size n from a homogeneous spatial Poisson process and taking the 50th largest among the simulated values (L_{theo}) to achieve a desired significance level $\alpha = 50/(999 + 1)$. The empirical (L_{obs}) and theoretical (L_{theo}) L -functions were estimated for a range of r values measured in Bookstein shape coordinates using the *Lest* function, and critical values were computed using the *envelope* function. The point of maximum difference between the observed and expected L values ($L_{\text{obs}} - L_{\text{theo}}$), termed maximum clustering distance (MCD), was used to indicate the distance at which predation traces were aggregated (Mullins et al. 2015). Because the K -function is cumulative and the graphic tool used for statistical inference may be difficult to interpret (Baddeley et al. 2016), we contrasted our results from the L -function against the pair correlation function (PCF). The PCF describes how the (normalized) density of predation traces changes as a function of distance, with the value $PCF = 1$ indicating CSR, $PCF > 1$ aggregation, and $PCF < 1$ segregation (Illian et al. 2008). We contrasted our results against the nearest neighbor index (NNI) (Clark and Evans 1954), a procedure that was previously used by Casey et al. (2015) to quantify deviations from CSR in the location of drilling predation traces. NNI is defined as the ratio of the mean nearest neighbor distance observed divided by the average distance between neighbors under CSR, with $NNI < 1$ indicating aggregation, and $NNI > 1$ segregation of traces. We also used a general approach that converts the results calculated at different distances along the prey skeleton into a single summary statistic u , the goodness-of-fit test (GoF) described by Loosmore and Ford (2006). The functions used for spatial statistical analyses are available in the R package Spatstat v. 1.23-4 (Baddeley et al. 2016).

Results

Description and Visualization of Spatial Patterns.—Overall, the spatial point pattern of predation traces for *L. latilirata* samples showed that drillholes were spread around the shell wall, ranging from the anterior margin to the umbonal area, with some traces located directly on the shell margin near the ventral anterior and posterior regions (Fig. 1). When point patterns for fossil *L. latilirata* were grouped by geologic age and examined through time, areas of higher concentration of predation traces derived via kernel density were irregularly distributed on the prey skeleton (Fig. 2A–C). Hotspot maps indicate a subtle migration of a single hotspot of predation traces on the prey skeleton of *L. latilirata* through time, from the dorsal wall region in the late Pliocene (Fig. 2A) toward the central region of the wall area in the early Pleistocene (Fig. 2B) and the anterior region in the middle Pleistocene (Fig. 2C). Only a few cases of edge drilling, a mode of predation in which a predator drills a hole at a point on the commissure between the closed valves (Taylor 1980; Vermeij 1980; Ansell and Morton 1985; Mondal et al. 2014; Rojas et al. 2015), were observed in the fossil *L. latilirata* samples, and thus no hotspots of predation traces were evident (Fig. 2).

In the point pattern of predation traces derived from beach-collected samples of *I. subrugosa*, two areas of higher concentration of drilling traces were found, one located at the umbo and the other a point placed at the ventral commissure, reflecting the occurrence of wall- and edge-drilling behavior of the unknown naticid predator(s). However, only a single hotspot was delimited by the analysis, corresponding to predation traces placed near the umbo, that is, wall drilling (Fig. 3A). In the point pattern of predation traces derived from feeding trials of *N. unifasciata* preying on *I. subrugosa*, we found a single area of higher concentration of drillholes as well as a single hotspot placed at the umbo (Fig. 3B) but slightly closer to the shell edge than in the beach-collected samples. In both beach-collected samples and feeding trial samples, the areas of higher concentration of drillholes

covered a relatively small area of the prey skeleton when compared with those from fossil *L. latilirata* prey (Fig. 2).

Distance-based Statistics and Hypothesis Testing.—The graphical output of the *L*-function indicated a significant aggregated pattern of predation traces across a range of distances on the skeleton of *L. latilirata* in both late Pliocene and early Pleistocene point patterns (Fig. 4A, B) (GoF: $u = 0.001$; $p < 0.01$). The average number of predation traces within a distance r shorter than 0.5 Bookstein shape units of another location (derived from Bookstein registration) was statistically greater than that expected for a complete random distribution. In addition, there was a reduction in the point of MCD from 0.25 to 0.19 Bookstein shape units for the late Pliocene to the early Pleistocene, respectively. The empirical *PCF* and *L*-function calculated for the middle Pleistocene point pattern remained entirely on the simulated envelopes, and thus there was insufficient evidence against the null hypothesis of CSR at any distance on the prey skeleton, a result supported by the GoF test ($u = 0.001$, $p = 0.03$).

The graphical output of the *L*-function calculated for the point pattern derived from the beach-collected samples of *I. subrugosa* indicates the occurrence of two segregated clusters, that is, a mixed pattern that includes aggregation and segregation at different distances on the prey skeleton (Fig. 4D) (GoF test for CSR: $u = 0.005$; $p = 0.01$). Predation traces located at short distances from other traces in the prey skeleton, either pairs of traces located on the umbo or the ventral margin, define the aggregated pattern. Pairs of predation traces located at large distances from each other, specifically those pairs that include one trace located on the umbo and another on the ventral margin, were located farther apart than expected under CSR, supporting a segregated pattern. In this case, the distance between traces approximates the length of the dorsoventral axis (Fig. 4D). In contrast, only an aggregated pattern of traces was observed for feeding trial data of *N. unifasciata* preying on *I. subrugosa* (GoF: $u = 0.012$; $p < 0.01$); thus, the segregated pattern observed in the beach-collected samples of the same prey species was not

supported (Fig. 4E). Remarkably, the MCD in the point patterns derived from the beach-collected samples (0.15) and feeding trial samples (0.17) was similar.

Results from the *L*-function and *PCF* for the assembled point patterns are related but appear to capture different aspects of the distribution of predation traces over a range of distances on the prey skeleton (Fig. 4A–J). The *L*-function was more conservative, indicating a significant segregated pattern of traces at large distances (>0.45 Bookstein shape distance) exclusively in the beach-collected samples (Fig. 4D), whereas the *PCF* showed additional minor excursions below the confidence envelope between 0.5 and 0.6 Bookstein shape distances, suggesting a weak aggregated pattern in the late Pliocene (Fig. 4F), early Pleistocene (Fig. 4G), and feeding trial (Fig. 4J) point patterns. The *PCF* also exhibited multiple peaks indicating aggregation of traces across the prey skeleton that could be attributed to multiple predators preying upon the examined prey (Fig. 4F–G, I–J), but a satisfactory interpretation of such peaks is not straightforward. In contrast, the *L*-function clearly identified two segregated clusters of traces on the beach-collected samples separated by more than 0.5 Bookstein shape distance, roughly corresponding to the distance separating the two areas with high density of traces in the KDE map (Fig. 2A) and corresponding to edge- and wall-drilling modes of predation (Rojas et al. 2015). The *PCF* indicated that such a pattern emerges at shorter distances (Bookstein shape distances > 0.3), which is consistent with segregated clusters located relatively closer to each other, either on the shell wall or shell edge, an observation that is not supported by KDE and hot-spot maps. The NNI (Fig. 4F–J), previously used by Casey et al. (2015) to study site selectivity in drilling predation, provided little information on the spatial distribution of predation traces across different distances on the prey skeleton. The NNI did not capture the segregated pattern of traces in beach-collected samples (Fig. 4N) and even contradicted results that are consistent across the different distance-based functions implemented in our study, for example, the NNI indicated significant segregation of traces ($NNI > 1$; $p < 0.01$) for the

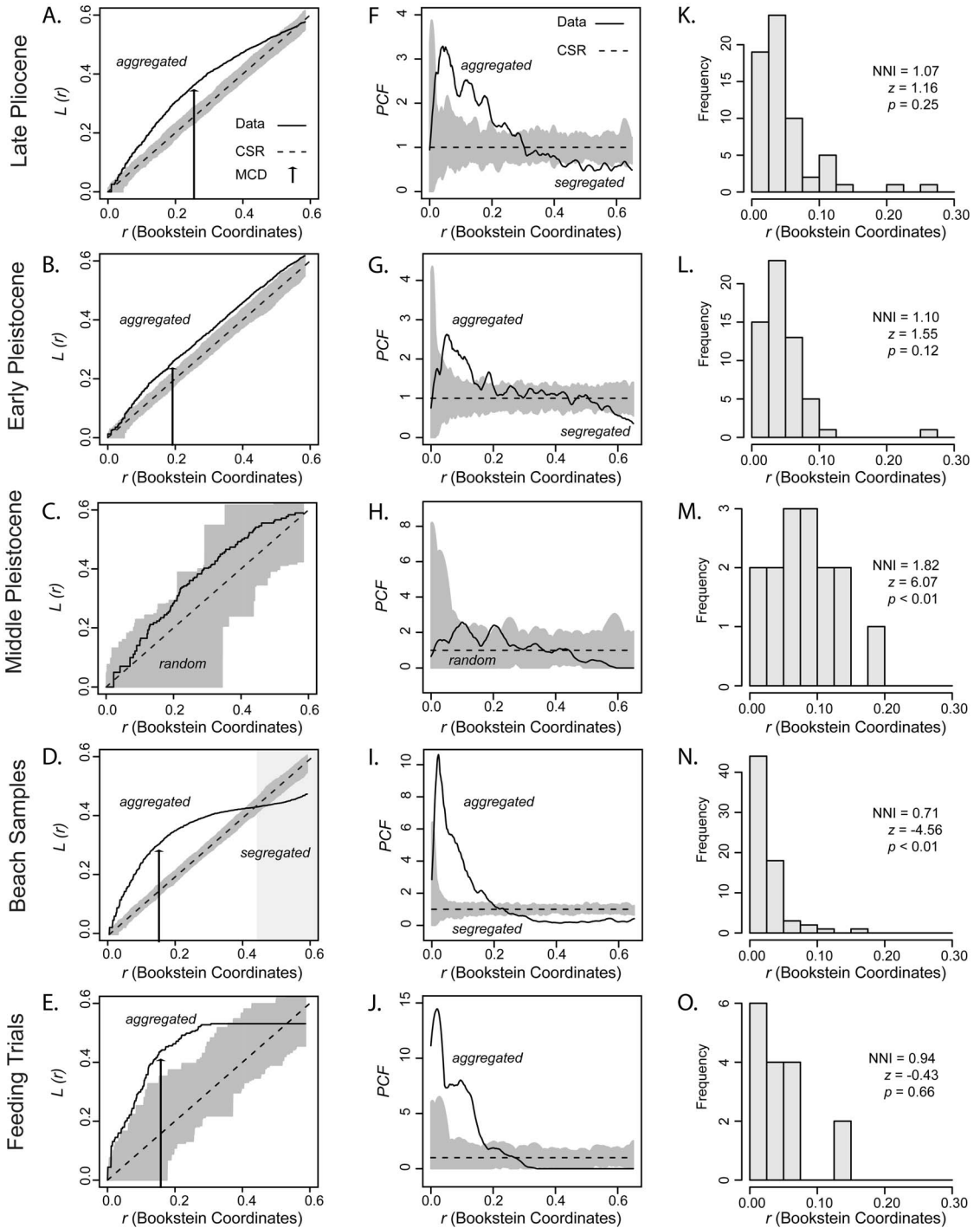


FIGURE 4. Graphical output from the distance-based statistics estimated on the fossil samples, modern beach-collected samples, and laboratory feeding trials. A–E, L -function. Black arrow indicates the point of maximum clustering distance (MCD). F–J, Pair correlation function (PCF). K–O, Histograms of nearest neighbor distances and estimated nearest neighbor index (NNI) for the actual data. Legend: Empirical ("Data") and expected (complete spatial randomness, "CSR") functions. The dark gray area is the simulation envelope for 999 Monte Carlo simulations of CSR. z , nearest neighbor z -score; a negative z -value indicates aggregation; a positive z -value indicates segregation.

middle Pleistocene point pattern, which was found to be random by both *L*-function and *PCF*.

Discussion

Spatial Patterns in the Distribution of Predation Traces on the Prey Skeleton.—Kernel density maps show significant variation in the concentration of predation traces on the skeleton of fossil *L. latilirata*. The estimated *L*-function indicates that naticid predation traces on late Pliocene and early Pleistocene samples, which likely included the abundant *Naticarius canrena* (Linnaeus, 1758), *Naticarius plicatella* (Conrad, 1863), and *Neverita duplicata* (Say, 1822) found in the same surveyed bulk samples (Supplementary Table S2), are significantly aggregated. Hotspots of predation traces in the late Pliocene and early Pleistocene spatial point patterns are unique, restricted to wall-drilling cases, and range in location from the middle region of the shell to the umbo. Predation traces in the middle Pleistocene point pattern were randomly placed (Figs. 4C,H). However, because naticid drilling predation tends to be a stereotyped behavior (Kabat 1990; Kingsley-Smith et al. 2003; Rojas et al. 2015), this pattern is likely due to small sample size. The observed reduction in the MCD from late Pliocene to early Pleistocene point patterns for *L. latilirata* may represent either temporal increase in site selectivity or changes in predator assemblages. The diversity of naticid species recorded in samples from the surveyed geologic units decreases from 19 to 8 between the late Pliocene and early Pleistocene samples, with at least five species in common (Supplementary Table S2). Although we cannot distinguish the individual contribution of each predator to the observed pattern in concentration of predation traces, we observed a temporal shift in hotspot locations migrating toward the ventral area of the shell. Demonstrating temporal shifts in site-selectivity preferences of drilling predators requires replicated samples through several stratigraphic sections, a task that is beyond the scope of this paper. Instead, this case study illustrates how MCD may provide information on temporal changes in site-selectivity

preferences. Our results also indicate that *L. latilirata* was not subject to significant edge-drilling attacks, pointing to the rarity of such predatory behavior in the examined fossil samples.

Although only a single hotspot characterizes the spatial distribution of predation traces from unknown naticid predators preying on *I. subrugosa* in the beach-collected samples, distance-based statistical analysis indicates cluster segregation, that is, predation traces are significantly aggregated at small scales or short distances and yet simultaneously significantly distributed in a segregated pattern at large distances on the prey skeleton (Fig. 4D). The segregated pattern results from the high concentration of predation traces located at short distances, either on the umbo or at the ventral edge, which gives an MCD of 0.25 Bookstein shape units. In contrast, the segregated pattern results from the concentration of predation traces at a larger distance on the prey skeleton, which approximates the distance (0.45 Bookstein shape units) separating the umbo and the ventral edge (i.e., dorsoventral axis) (Fig. 4D). The distance on the prey skeleton at which the *PCF* indicates clustered aggregation (Fig. 4I) is significantly shorter than the dorsoventral axis, pointing to the advantage of the *L*-function over the *PCF* in characterizing distribution of predation traces. This case study also highlights the need for combining density estimation, hotspot mapping, and distance-based functions to best characterize the distribution of predation traces on prey.

A previous qualitative analysis of site-selectivity patterns between the studied beach-collected and laboratory feeding trial samples used in this study suggested the occurrence of similar drilling patterns (Rojas et al. 2015). Despite similarities (e.g., occurrence of edge drilling, similar MCD), distance-based statistical analysis indicated that the number of predation traces located on the ventral edge of *I. subrugosa* in the feeding trials is not enough to form a significant segregated pattern as was the case for the beach-collected samples. This evidence may point to biased site-selectivity patterns either due to artifacts under laboratory conditions (e.g., lack of competition may reduce

incidence of edge-drilling behavior; Dietl 2004) or the influence of sample size (e.g., small sample sizes may not resolve minor peaks in density of predation traces), which should be further explored. This case study also illustrates the value of the SPPAT framework over qualitative assessments of site selectivity in evaluating alternative modes of drilling predation (i.e., edge and wall drilling).

Site-Selectivity Assessment Using SPPAT.—Current methods to characterize site-selectivity patterns of drilling predators exclude some spatial information inherent to drillhole location, employing an oversimplified description of the trace position, for example, distance of the drillhole to a selected feature in the skeleton (Kowalewski 2002). The SPPAT approach implemented here exploits the spatially explicit nature of the drilling traces to accurately map predation traces on both modern and fossilized shelled invertebrate prey to provide visual and quantitative information on subtle differences in site-selectivity patterns that are not apparent to the naked eye (see Illian et al. 2008; Mitchell and Butterfield 2018; Mitchell et al. 2018), including recognition of the slight migration of hotspots along particular regions of the prey skeleton that otherwise would be described ambiguously (e.g., shell wall and shell edge) or that depend critically on the arbitrary grid system used by sector-based approaches (Kowalewski 1990, 2002). Limitations of sector-based methods for spatial analysis have been recognized previously in other research fields, such as archaeology (Hodder and Okell 1978; Johnson 1984) and ecology (Culley et al. 1933; Elliott 1971). Because distance-based statistics for hypothesis testing are included (Ripley's *K*-function, *L*-function, and *PCF*), the SPPAT approach quantifies complex patterns that emerge at different distances on the prey skeleton (e.g., mixing of aggregated and segregated patterns) that cannot be captured using either sector-based methods (Hodder and Okell 1978) or nearest neighbor statistics (Li and Zhang 2007). The nearest neighbor approach implemented by Casey et al. (2015) is useful for testing the CSR hypothesis and identifying local associations but not for quantifying scale-dependent patterns. Our results support the notion that the NNI is

unreliable in the recognition of complex spatial patterns in the distribution of predation traces on shelled invertebrate prey. Li and Zhang (2007) and Mitchell and Butterfield (2018) discussed other examples for which nearest neighbor statistics were also found to be unreliable in the study of spatial patterns.

Although we illustrated the SPPAT approach through case studies of naticid gastropod predation on bivalve prey, it could be extended to examine the composite pattern of predatory traces produced by co-occurring predators (e.g., naticid and muricid gastropods) relative to each group. In addition, drillhole diameter or any other attribute (predator taxonomy, length, etc.) of the predation traces could be used to create a marked point pattern and thus to explore its effect on the spatial patterns.

Conclusions

Site-selectivity analysis of shell-drilling predators is a spatially explicit question. Taking advantage of the spatial information inherent to drillhole location, the SPPAT approach developed here captures diverse aspects in the spatial distribution of predation traces on modern and fossilized prey remains and introduces a novel set of graphic (i.e., kernel density and hotspot maps) and quantitative tools (i.e., *K*-function, *L*-function, MCD), largely used in research fields other than paleobiology, for evaluating changes in site-selectivity patterns across taxa, space, and time. Despite limitations affecting data used here—both stratigraphic (i.e., long and unequal time intervals) and geographic (i.e., sampling localities relatively far apart from each other and potential variation in sampled environments)—we showed how SPPAT can be used to visualize areas of high concentration of predation traces on the prey skeleton and to quantify aggregated and segregated patterns occurring at different spatial scales (or distances on the prey skeleton). The visual information on density of predation traces and hotspots, as well the identification of mixed spatial patterns, could not have been obtained using current approaches that lack spatial information and that are dependent on the scale of analysis. We also showed that the point of MCD is an informative measure to

examine large-scale temporal and small (intra-valve) spatial-scale variation in site-selectivity patterns. Future studies could investigate variation in hotspot locations and MCD in terms of large-scale geographic variation (e.g., latitudinal trends), co-occurring predators (e.g., naticids and muricids), and prey variables, such as taxonomy, thickness, size, mode of life, and ornamentation that are important to this predator–prey interaction. Our study provides a general conceptual framework to orient future research on site-selectivity patterns in drilling predation. However, the SPPAT approach may be generalized to a wide spectrum of ecologic and taphonomic data preserved on skeletal remains of Phanerozoic marine invertebrates, including encrustation, bioerosion traces, and repair scars (Kowalewski 2002) that are spatially explicit and can be mapped.

Acknowledgments

We thank S. Roberts (Division of Invertebrate Paleontology, FLMNH) for assistance in the museum survey. We thank two anonymous reviewers and editor M. Patzkowsky for helpful comments and constructive criticism that greatly improved this article. A.R. is grateful to E. Sandoval for her continuous support. A.R. was supported by the Olle Engkvist Byggmästare Foundation. Financial support to R.W.P. for fieldwork was kindly provided by Mrs. Barbara and son James Toomey and the McGinty Endowment (FLMNH). This is University of Florida Contribution to Paleobiology 853.

Literature Cited

- Alexander, R. R., G. P. Dietl, and U. Farrell. 2007. Influence of intra-valve variation in valve thickness on naticid borehole stereotypy. *Geological Society of America Abstracts with Programs* 39:94.
- Anderson, L. C., D. H. Geary, R. H. Nehm, and W. D. Allmon. 1991. A comparative study of naticid gastropod predation on *Varicorbula caloosae* and *Chione cancellata*, Plio-Pleistocene of Florida, U.S.A. *Palaeogeography, Palaeoclimatology, Palaeoecology* 85:29–46.
- Ansell, A., and B. Morton. 1985. Aspects of naticid predation in Hong Kong with special reference to the defensive adaptations of *Bassina (Callanaitis) calophylla* (Bivalvia). Pp. 635–660 in B. Morton and D. Dudgeon, eds. *Proceedings of the Second International Workshop on the Malacofauna of Hong Kong and Southern China*. Hong Kong University Press, Hong Kong.
- Baddeley, A., and R. Turner. 2005. Spatstat: an R package for analyzing spatial point patterns. *Journal of Statistical Software* 12:1–42.
- Baddeley, A., E. Rubak, and R. Turner. 2016. *Spatial point patterns: methodology and applications with R*. CRC Press, Boca Raton, Fla., 810.
- Besag, J. 1977. Contribution to the discussion on Dr. Ripley's paper. *Journal of the Royal Statistical Society B* 39:193–195.
- Bivand, R., E. J. Pebesma, and V. Gómez-Rubio. 2008. *Applied spatial data analysis with R*. Springer, New York, 378.
- Bookstein, F. L. 1986. Size and shape spaces for landmark data in two dimensions. *Statistical Science* 1–2:181–222.
- Bromley, R. G. 1981. Concepts in ichnotaxonomy illustrated by small round holes in shells. *Acta Geológica Hispánica* 16:55–64.
- Casey, M. M., Ú. C. Farrell, G. P. Dietl, and D. J. Veilleux. 2015. Mixed assemblages of drilling predators and the problem of identity in the fossil record: a case study using the muricid gastropod *Ecphora*. *Paleobiology* 41:680–696.
- Chiba, T., and S. Sato. 2012. Size-selective predation and drillhole-site selectivity in *Euspira fortunei* (Gastropoda: Naticidae): implications for ecological and palaeoecological studies. *Journal of Molluscan Studies* 78:205–212.
- Clapham, M. E., G. M. Narbonne, and J. G. Gehling. 2003. Paleoeology of the oldest known animal communities: Ediacaran assemblages at Mistaken Point, Newfoundland. *Paleobiology* 29:527–544.
- Clark, P. J., and F. C. Evans. 1954. Distance to nearest neighbor as a measure of spatial relationships in populations. *Ecology* 35:445–453.
- Claude, J. 2008. *Morphometrics with R*. Springer, New York, 317.
- Conrad T. A. 1841. On new species of fossil shells from Tertiary of Maryland. *Proceedings of the Academy of Natural Sciences of Philadelphia*, 1:28–33.
- Conrad, T. A. 1863. Catalogue of the Miocene shells of the Atlantic slope. *Proceedings of the Academy of Natural Sciences of Philadelphia* 14:559–586.
- Culley, M. J., R. S. Campbell, and R. H. Canfield. 1933. Values and limitations of clipped quadrats. *Ecology* 14:35–39.
- Dietl, G. P. 2004. Reduced competition and altered feeding behavior among marine snails after a mass extinction. *Science* 306:2229–2231.
- Dietl, G. P., and R. R. Alexander. 2000. Post-Miocene shift in stereotypic naticid predation on confamilial prey from the mid-Atlantic shelf: coevolution with dangerous prey. *Palaios* 15:414–429.
- Dietl, G. P., R. R. Alexander, P. Kelley, and T. Hansen. 2001. Stereotypy of naticid predation on bivalves since the Cretaceous: trends, controlling factors, and implications for escalation. *PaleoBios* 21:78.
- Elliott, J. M. 1971. Some methods for the statistical analysis of samples of the benthic invertebrates. *Freshwater Biological Association Scientific Publications*, Westmoreland, U.K., 144.
- Fieberg, J. 2007. Utilization distribution estimation using weighted kernel density estimators. *Journal of Wildlife Management* 71:1669–1675.
- Fotheringham, A. S., C. Brunsdon, and M. Charlton. 2000. *Quantitative geography: perspectives on spatial data analysis*. Sage, London, 270.
- Harper, E. M. 2006. Dissecting post-Palaeozoic arms races. *Palaeogeography, Palaeoclimatology, Palaeoecology* 232:322–343.
- Hattori, K. E., P. H. Kelley, G. P. Dietl, N. O. Moore, S. L. Simpson, A. M. Zappulla, K. J. Ottens, and C. C. Visaggi. 2014. Validation of taxon-specific sampling by novice collectors for studying drilling predation in fossil bivalves. *Palaeogeography, Palaeoclimatology, Palaeoecology* 412:199–207.
- Hodder, I., and E. Okell. 1978. A new method for assessing the association between distributions of points in archaeology. Pp. 975–107 in I. Hodder, ed. *Simulation studies in archaeology*. Cambridge University Press, Cambridge.
- Hoffmeister, A. P., and M. Kowalewski. 2001. Spatial and environmental variation in the fossil record of drilling predation: a case study from the Miocene of central Europe. *Palaios* 16:566–579.
- Hoffmeister, A. P., M. Kowalewski, T. K. Baumiller, and R. K. Bambach. 2004. Drilling predation on Permian brachiopods and bivalves from the Glass Mountains, west Texas. *Acta Palaeontologica Polonica* 49:443–454.

- Illian, J., A. Penttinen, H. Stoyan, and D. Stoyan. 2008. Statistical analysis and modelling of spatial point patterns. Statistics in practice. Wiley, Chichester, U.K.
- Johnson, I. 1984. Cell frequency recording and analysis of artifact distributions. Pp.75–96 in H. J. Hietala, ed. *Intrasite spatial analysis in archaeology*. Cambridge University Press, Cambridge.
- Kabat, A. R. 1990. Predatory ecology of naticid gastropods with a review of shell boring predation. *Malacologia* 32:155–193.
- Kelley, P. H. 1988. Predation by Miocene gastropods of the Chesapeake Group: stereotyped and predictable. *Palaos* 3:436–448.
- Kingsley-Smith, P. R., C. A. Richardson, and R. Seed. 2003. Stereotypic and size-selective predation in *Polinices pulchellus* (Gastropoda: Naticidae) Risso 1826. *Journal of Experimental Marine Biology and Ecology* 295:173–190.
- Kitchell, J. 1986. The evolution of predator-prey behavior: naticid gastropods and their molluscan prey. Pp. 88–110 in M. Nitecki and J. Kitchell, eds. *Evolution of animal behavior: paleontological and field approaches*. Oxford University Press, Oxford.
- Kitchell, J., C. Boggs, J. Kitchell, and J. Rice. 1981. Prey selection by naticid gastropods: experimental tests and application the fossil record. *Paleobiology* 7:533–552.
- Klompaker, A. A., and P. H. Kelley. 2015. Shell ornamentation as a likely exaptation: evidence from predatory drilling on Cenozoic bivalves. *Paleobiology* 41:187–201.
- Klompaker, A. A., P. H. Kelley, D. Chattopadhyay, J. C. Clements, J. W. Huntley, and M. Kowalewski. 2019. Predation in the marine fossil record: studies, data, recognition, environmental factors, and behavior. *Earth-Science Reviews* 194:472–520.
- Kolbe, S. E., R. Lockwood, and G. Hunt. 2011. Does morphological variation buffer against extinction? A test using veneroid bivalves from the Plio-Pleistocene of Florida. *Paleobiology* 37:355–368.
- Kowalewski, M. 1990. A hermeneutic analysis of the shell-drilling gastropod predation on mollusks in the Korytnica Clays (middle Miocene; Holy Cross Mountains, Central Poland). *Acta Geologica Polonica* 40:183–1213.
- Kowalewski, M. 2002. The fossil record of predation. an overview of analytical methods. Pp. 3–42 in M. Kowalewski and P. Kelley, eds. *The fossil record of predation*, Vol. 8. Paleontological Society Special Papers, New Haven, Conn.
- Kowalewski, M. 2004. Drillholes produced by the predatory gastropod *Nucella lamellosa* (Muricidae): palaeobiological and ecological implications. *Journal of Molluscan Studies* 70:359–370.
- Lamarck, J.-B. de. 1822. Histoire naturelle des animaux sans vertèbres, présentant les caractères généraux et particuliers de ces animaux, leur distribution, leurs classes, leurs familles, leurs genres, et la citation des principales espèces qui s'y rapportent; précédée d'une introduction offrant la détermination des caractères essentiels de l'animal, sa distinction du végétal et des autres corps naturels; enfin, l'exposition des principes fondamentaux de la zoologie. Tome septième. Paris.
- Leighton, L. R. 2002. Inferring predation intensity in the marine fossil record. *Paleobiology* 28:328–342.
- Li, F., and L. Zhang. 2007. Comparison of point pattern analysis methods for classifying the spatial distributions of spruce-fir stands in the north-east USA. *Forestry* 80:337–349.
- Linnaeus, C. 1758. *Systema Naturae per regna tria naturae, secundum classes, ordines, genera, species, cum characteribus, differentiis, synonymis, locis*. Editio decima, reformata [10th revised ed.], Vol. 1. Laurentius Salvius, Holmiae.
- Loosmore, N. B., and E. D. Ford. 2006. Statistical inference using the G or K point pattern spatial statistics. *Ecology* 87:1925–1931.
- Lyons, W. G. 1991. Post-Miocene species of *Latirus* Montfort, 1810 (Mollusca: Fasciolaridae) of southern Florida, with a review of regional marine biostratigraphy. *Bulletin of the Florida Museum of Natural History* 35:131–208.
- Mitchell, E. G., and N. J. Butterfield. 2018. Spatial analyses of Ediacaran communities at Mistaken Point. *Paleobiology* 44:40–57.
- Mitchell, E. G., C. G. Kenchington, S. Harris, and P. R. Wilby. 2018. Revealing rangeomorph species characters using spatial analyses. *Canadian Journal of Earth Sciences* 55:1262–1270.
- Mitchell, E. G., S. Harris, C. G. Kenchington, P. Vixseboxse, L. Roberts, C. Clark, A. Dennis, A. G. Liu, and P. R. Wilby. 2019. The importance of neutral over niche processes in structuring Ediacaran early animal communities. *Ecology Letters* 22:2028–2038.
- Mondal, S., J. A. Hutchings, and G. S. Herbert. 2014. A note on edge drilling predation by naticid gastropods. *Journal of Molluscan Studies* 80:206–212.
- Mullins, J. C., M. Van Ert, T. Hadfield, M. P. Nikolich, M. E. Hugh-Jones, and J. K. Blackburn. 2015. Spatio-temporal patterns of an anthrax outbreak in white-tailed deer, *Odocoileus virginianus*, and associated genetic diversity of *Bacillus anthracis*. *BMC Ecology* 15:23.
- Negus, M. 1975. An analysis of boreholes drilled by *Natica catena* (da Costa) in the valves of *Donax vittatus* (da Costa). *Proceedings of the Malacological Society of London* 41:353–356.
- Nelson, T. A., and B. Boots. 2008. Detecting spatial hot spots in landscape ecology. *Ecography* 31:556–566.
- Ottens, K. J., G. P. Dietl, P. H. Kelley, and S. D. Stanford. 2012. A comparison of analyses of drilling predation on fossil bivalves: bulk- vs. taxon-specific sampling and the role of collector experience. *Palaeogeography, Palaeoclimatology, Palaeoecology* 319–320:84–92.
- Perea, J., A. García, R. Acero, D. Valerio, and G. Gómez. 2008. A photogrammetric methodology for size measurements: application to the study of weight–shell diameter relationship in juvenile *Cantareus aspersus* snails. *Journal of Molluscan Studies* 74:1–5.
- Ripley, B. D. 1976. The second-order analysis of stationary point processes. *Journal of Applied Probability* 13:255–266.
- Ripley, B. D. 1977. Modelling spatial patterns. *Journal of the Royal Statistical Society* 39:172–212.
- Ripley, B. D. 1988. *Statistical inference for spatial processes*. Cambridge University Press, Cambridge, 148.
- Rojas, A., A. Hendy, and G. P. Dietl. 2015. Edge-drilling behavior in the predatory gastropod *Notocochlis unifasciata* (Lamarck, 1822) (Caenogastropoda, Naticidae) from the Pacific coast of Panama: taxonomic and biogeographical implications. *Vita Malacologica* 13:63–72.
- Rojas, A., R. W. Portell, and M. Kowalewski. 2017. The post-Palaeozoic fossil record of drilling predation on lingulide brachiopods. *Lethaia* 50:296–305.
- Roopnarine, P., and A. Beussink. 1999. Extinction and naticid predation of the bivalve *Chione* von Mühlfeld in the late Neogene of Florida. *Paleontologia Electronica* 2:1–14.
- Say, T. 1822. Description of univalve terrestrial and fluviatile shells of the United States. *Journal of the Academy of Natural Sciences of Philadelphia* 2:370–381.
- Silverman, B. W. 1986. *Density estimation*. Chapman and Hall, London, 175.
- Smith, J. A., G. P. Dietl, and J. C. Handley. 2019. Durophagy bias: the effect of shell destruction by crushing predators on drilling frequency. *Palaeogeography, Palaeoclimatology, Palaeoecology* 514:690–694.
- Taylor, J. D. 1980. Diets and habits of shallow water predatory gastropods around Tolo Channel, Hong Kong. Pp.163–180 in B. Morton, ed. *The malacofauna of Hong Kong and southern China*. Hong Kong University Press, Hong Kong.
- Vermeij, G. 1980. Drilling predation of bivalves in Guam: some paleoecological implications. *Malacologia* 19:329–334.
- Ward, L. D., R. H. Bailey, and J. G. Carter. 1991. Pliocene and early Pleistocene stratigraphy, depositional history, and molluscan paleobiogeography of the Coastal Plain. Pp. 274–289 in J. W. Horton and V. A. Zullo, eds. *The geology of the Carolinas*. University of Tennessee Press, Knoxville, Tenn.
- Wood W. 1828. *Index testaceologicus; or a catalogue of shells, British and foreign, arranged according to the Linnean system; with the Latin and English names, references to authors, and places where found*. 2nd ed. London.