

Screening and Identification of Antibiotic Resistant Gene int1 in Coliforms Isolated From Drinking Water

Authors: Chowdhury, A. M. Masudul Azad, Mina, Sohana Akter, Hossain, A. K. M Zakir, Debnath, Pabitra, and Hasan, Md Zahid

Source: Air, Soil and Water Research, 15(1)

Published By: SAGE Publishing

URL: <https://doi.org/10.1177/11786221221084715>

The BioOne Digital Library (<https://bioone.org/>) provides worldwide distribution for more than 580 journals and eBooks from BioOne's community of over 150 nonprofit societies, research institutions, and university presses in the biological, ecological, and environmental sciences. The BioOne Digital Library encompasses the flagship aggregation BioOne Complete (<https://bioone.org/subscribe>), the BioOne Complete Archive (<https://bioone.org/archive>), and the BioOne eBooks program offerings ESA eBook Collection (<https://bioone.org/esa-ebooks>) and CSIRO Publishing BioSelect Collection (<https://bioone.org/csiro-ebooks>).

Your use of this PDF, the BioOne Digital Library, and all posted and associated content indicates your acceptance of BioOne's Terms of Use, available at www.bioone.org/terms-of-use.

Usage of BioOne Digital Library content is strictly limited to personal, educational, and non-commercial use. Commercial inquiries or rights and permissions requests should be directed to the individual publisher as copyright holder.

BioOne is an innovative nonprofit that sees sustainable scholarly publishing as an inherently collaborative enterprise connecting authors, nonprofit publishers, academic institutions, research libraries, and research funders in the common goal of maximizing access to critical research.

Screening and Identification of Antibiotic Resistant Gene *int1* in Coliforms Isolated From Drinking Water

A. M. Masudul Azad Chowdhury[✉], Sohana Akter Mina,
A. K. M Zakir Hossain[✉], Pabitra Debnath, and Md Zahid Hasan

Department of Genetic Engineering and Biotechnology, University of Chittagong, Chittagong, Bangladesh

Air, Soil and Water Research
Volume 15: 1–8
© The Author(s) 2022
Article reuse guidelines:
sagepub.com/journals-permissions
DOI: 10.1177/11786221221084715



ABSTRACT: Antibiotic-resistance genes carried by coliforms in drinking water is a concerning issue for public health in Bangladesh. This research was carried out to identify coliforms in drinking water and to understand the importance of the *int1* gene of coliforms in the spread of resistance to bacterial antibiotics through consumption of contaminated water. A total of 31 drinking water samples were collected from restaurants ($n=18$), health center ($n=9$), and residences ($n=4$) located in Chattogram City, Bangladesh. The isolation and identification of coliforms was performed on selective media with a combination of biochemical and molecular analysis. PCR amplification of the *LacZ*, *uidA* and *int1* genes was carried out for the identification of the coliform and fecal coliform and antibiotic resistant gene, respectively. Antimicrobial susceptibility test was performed according to the Kirby-Bauer disk diffusion method with McFarland standard against three selective antibiotics including co-trimoxazole, ciprofloxacin, and ampicillin. Of 31 drinking water samples, coliforms were detected within 32% ($n=10$) of the water samples, nine samples were collected in restaurants and one sample in a residence. But no coliform was detected in the drinking water of the health center. Among the identified coliforms, the prevalence of fecal coliforms and the *int1* gene was 60% ($n=6$) and 40% ($n=4$), relatively. All isolates containing the *int1* microbial-resistance gene were resistant to ampicillin. This study shows that drinking water consumed in different restaurants located in Chattogram, Bangladesh is contaminated by antibiotic-resistant gene bearing coliforms that not only increase the risk of water-borne disease, but also may be the major cause of antibiotic resistance transmission in this part of Bangladesh.

KEYWORDS: Coliform, fecal coliform, antibiotic resistance, drinking water, integron1

RECEIVED: November 30, 2021. **ACCEPTED:** February 11, 2022.

TYPE:Original Research

CORRESPONDING AUTHOR: A. M. Masudul Azad Chowdhury, Laboratory of Microbial and Cancer Genomics, Department of Genetic Engineering and Biotechnology, University of Chittagong, Chittagong 4331, Bangladesh. Email: masud.geb@cu.ac.bd

Introduction

Availability of drinking water is one of the main prerequisites for healthy life (Fawell & Nieuwenhuijsen, 2003) and safe drinking water is also considered a universal human right by the United Nations Conventions (Gorchev & Ozolins, 2011; World Health Organization, 2011). However, the availability of safe drinking water is still considered a dream for many people living in Asia, South America and Africa (Rubino et al., 2019). Access to clean, contamination-free water is also necessary to maintain an improved public health (Mina et al., 2018).

Generally, the population of Chattogram City, Bangladesh consumes drinking water as safe water in homes, hospitals, restaurants, vendors, educational institutions, offices, etc. But the presence of microorganisms in drinking water has attracted great attention worldwide because of public health problems (Olaoye & Onilude, 2009). According to the World Health Organization (WHO), approximately 1.1 million people globally consume impure water and 88% of diarrheal diseases in the world are the result of the consumption of contaminated water (World Health Organization, 2003). Ten major waterborne diseases have also reported to be responsible for more than 28 billion disease episodes yearly in developing countries (Suthar et al., 2009). It is very concerning that Chattogram city, Bangladesh, has also been suffering from various water-related problems along with insufficient drinking water supply (Zuthi et al., 2009).

Coliform has generally been used as an indicator of water quality, and its presence in drinking water is also used as an index of the presence of entero-pathogens in water (Rompré

et al., 2002). The total number of fecal coliforms should be zero in drinking water (World Health Organization, 2004). Among coliforms, *Escherichia coli* is widely used for coliform, as well as fecal coliform (Odonkor & Ampofo, 2013). It belongs to the Enterobacteriaceae family and is facultative anaerobic bacterium. It is widely spread in the natural environment and transmitted via fecal-oral route (Waturangi et al., 2019).

The antibiotic resistant gene- integron, an integrase gene (*intI*), encodes a site-specific enzyme- recombinase, a promoter (Pc) and an attachment site (attI). The gene cassettes consist of promoterless ORF and *int1*-identifiable recombination site-attC insert into the integron gene and this integration is mediated by a recombination reaction (Mooij et al., 2005). The high expression of *int1* inhibits the antimicrobial function of Ciprofloxacin (third generation), Ampicillin (third generation) (Mooij et al., 2005; Peirano et al., 2005).

In developing countries like Bangladesh, antibiotic resistance is a severe threat due to the widespread misuse of antibiotics, inappropriate regulations, poor effectiveness of drugs, etc. (Ayukekbong et al., 2017). This resistance emerges in both pathogenic microbes and coliform like *E. coli* (Katouli, 2010). The resistance genes located on *E.coli* plasmids can develop resistance mechanism (Szmolka & Nagy, 2013). Coliforms, found in healthy human stool, street food, and drinks and surface when exposed to antibiotics, are forced to develop different strategies to survive and grow (Johura et al., 2020). Therefore, this study aims to understand the contributions of coliforms as well as fecal coliforms in drinking water in the



Creative Commons Non Commercial CC BY-NC: This article is distributed under the terms of the Creative Commons Attribution-NonCommercial 4.0 License (<https://creativecommons.org/licenses/by-nc/4.0/>) which permits non-commercial use, reproduction and distribution of the work without

further permission provided the original work is attributed as specified on the SAGE and Open Access pages (<https://us.sagepub.com/en-us/nam/open-access-at-sage>).
Downloaded From: <https://complete.bioone.org/journals/Air,-Soil-and-Water-Research> on 20 Jul 2025
Terms of Use: <https://complete.bioone.org/terms-of-use>

Table 1. Target Genes, Primers, Cyclic Condition, Composition of the PCR Mixture, and Amplicon Size.

TARGET GENES	PRIMER SEQUENCE 5'–3'	CYCLING PARAMETERS	COMPOSITION OF PCR MIXTURES	AMPLICON SIZE (BP)
Coliform: <i>lacZ</i>	ATGAAAGGCTGGCTACAGGAAGGCC ^a CACCATGCCGTGGGTTTCAATATT ^b	5 minutes at 95 °C, 25 cycles of 95 °C for 1 minute, 60 °C for 1 minute and 72 °C for 1 minute	For 20 µl: 10 µl master mix, 4 µl template, 2 µl ^a , 2 µl ^b , 3 µl water	874
Faecal coliform: <i>uidA</i>	TGGTAATTACCGACGAAAACGG ^a ACGCGTGGTTACAGTCTTGCG ^b	5 minutes at 95 °C, 30 cycles of 95 °C for 50 seconds, 62 °C for 50 seconds and 72 °C for 1 minute	For 20 µl: 10 µl master mix, 4 µl template, 2 µl ^a , 2 µl ^b , 3 µl water	147
Antibiotic Resistant: <i>int1</i>	CCTCCCGCACGATGATC ^a TCCACGCATCGTCAGGC ^b	2 minutes at 94 °C, 33 cycles of 94 °C for 30 seconds, 59 °C for 30 seconds, and 72 °C for 30 seconds and 72 °C for 30 seconds	For 20 µl: 10 µl master mix, 4 µl template, 2 µl ^a , 2 µl ^b , 3 µl water	280

^aForward primer; ^bReverse primer.

transmission of bacterial antibiotic resistance, specifically in a major metropolitan city of Bangladesh.

Materials and Methods

Sample Collection and Processing: A total of 31 portable water samples were collected from different hospital and diagnostic center ($n=9$), hotel and restaurant ($n=18$), and residential buildings ($n=14$) situated in Chawkbazar, Muradpur, Panchlish, Chittagong University Campus of Chattogram City, Bangladesh. The drinking water samples were collected in two sets of sterile capped container through maintaining aseptic condition strictly. The collected samples were kept in a sterilized container (Ice bag) and carried to the laboratory, and all samples were stored at -4°C until further use for microbiological analysis.

Selective plating

The MacConky agar medium (HI media) was prepared in 250 ml conical flask according to the manufactured protocol. After the sterilization process was completed, the medium was cooled to around 40°C . Meanwhile, the water samples were properly vortexed and 1 ml of sample was poured into the Petri dish. The prepared MacConky media was poured into the same Petri dish and then the plates were stirred gently clockwise and anticlockwise with a hand, so that the samples were thoroughly mixed with the medium. The Petri dishes were allowed to solidify. After solidification, the plates were kept in the incubator in an inverted position at 37°C overnight. After incubation, a characteristic colony of coliforms was observed and the selected colony was picked and stored for biochemical confirmation. Same process was done for two times to get repetitive results.

Biochemical identification

The prepared TSI medium (Himedia, M021-500G) in conical flask was placed in a sterile test tube and the opening of the

tube was closed with a cotton gauge. The test tube was then autoclaved. After autoclaving, the test tube was kept in a tilted position for 2 to 3 hours for solidification. By microwire sterile loop, the bacterial single colony was inoculated on TSI slant and loop was dipped into butt carefully. In the case of every suspected sample, the same procedure was followed. The TSI test tubes were incubated into an incubator at 37°C for overnight. The TSI test tubes within an acidic (yellow) slant and an acidic butt with gas were suspected for coliforms. These suspected samples were selected for DNA isolation and molecular identification.

DNA extraction and PCR

The genomic DNA extraction of the isolated coliforms was performed according to the previously published protocol (Queipo-Ortuño et al., 2008). PCR amplification of the target genes (Table 1) was performed using a thermal cycler (NyxTechnik) (Mehdi et al., 2018; Mina et al., 2018). After amplification, the PCR products were analyzed by gel electrophoresis at 1.5% agarose.

Antibiotic susceptibility test

Kirby-Bauer disk diffusion method with McFarland standard was followed for the antibiotic susceptibility test (Andrews, 2001; Wiegand et al., 2008). In this study, 0.5 McFarland turbidity standard contained 0.5 ml of 1.17% barium chloride and 9.5 ml 1% sulfuric acid (Andrews, 2001). A loopful of bacterium colony was taken into a 5 ml sterile double distilled water containing test tube. The bacterium turbidity concentration was compared with the McFarland turbidity standard. The cotton swab was then dipped in distilled water containing the bacteria and spread on Mueller Hinton agar plate. Three antibiotic disks (ampicillin, Ciprofloxacin, and co-trimoxazole) were placed on the culture plate carefully. Plates were kept in refrigerator at 4°C for 20 minutes so that the antibiotic could diffuse. The plates were then incubated for overnight at 37°C

Table 2. Summarized Information About the Screening of Coliforms From Drinking Water.

	ID	PINK COLONIES ON MACCONKEY AGAR	TSI (YELLOW SLANT + YELLOW BUTT + GAS)	PRESENCE OF LACZ	PRESENCE OF COLIFORMS
Hospital and Diagnostic centers (n=9)	S1	–	–	–	–
	S2	–	–	–	–
	S4	–	–	–	–
	S7	–	–	–	–
	S8	–	–	–	–
	S9	–	–	–	–
	S10	–	–	–	–
	S20	–	–	–	–
	S21				
Hotel and Restaurants (n=18)	S3	+	+	+	+ (C-S3)
	S5	–	–	–	–
	S6	+	+	+	+ (C-S6)
	S11	+	+	+	+ (C-S11)
	S12	+	+	+	+ (C-S12)
	S13	+	+	+	+ (C-S13)
	S14	–	–	–	–
	S15	+	+	+	+ (C-S15)
	S16	–	–	–	–
	S17	+	+	+	+ (C-S17)
	S18	–	–	–	–
	S19	–	–	–	–
	S22	–	–	–	–
	S23	+	+	+	+ (C-S23)
	S24	–	–	–	–
	S25	–	–	–	–
	S26	–	–	–	–
	S31	+	+	+	+ (C-S31)
Residences (n=4)	S27	–	–	–	–
	S28	–	–	–	–
	S29	–	–	–	–
	S30	+	+	+	+ (C-S30)
Total samples: 31 Total Coliform: 10					

in the incubator. Finally, after incubation, the inhibition zone against each antibiotic disc was measured.

Results

Screening of coliforms in drinking water

This research project has been designed to investigate the occurrence of coliform bacteria in the drinking water of

different public places in Chattogram city, Bangladesh (Table 2). To identify coliform in drinking water, collected water samples were cultured in MacConkey agar by the pour plate technique. Coliforms are a group of Lactose-fermenting bacteria and usually grow as pink colonies on the MacConkey agar plate. The pour plating of the water sample on MacConkey agar revealed the occurrence of coliform bacteria in 10 of the 31 drinking water samples collected as clear pink colonies were observed

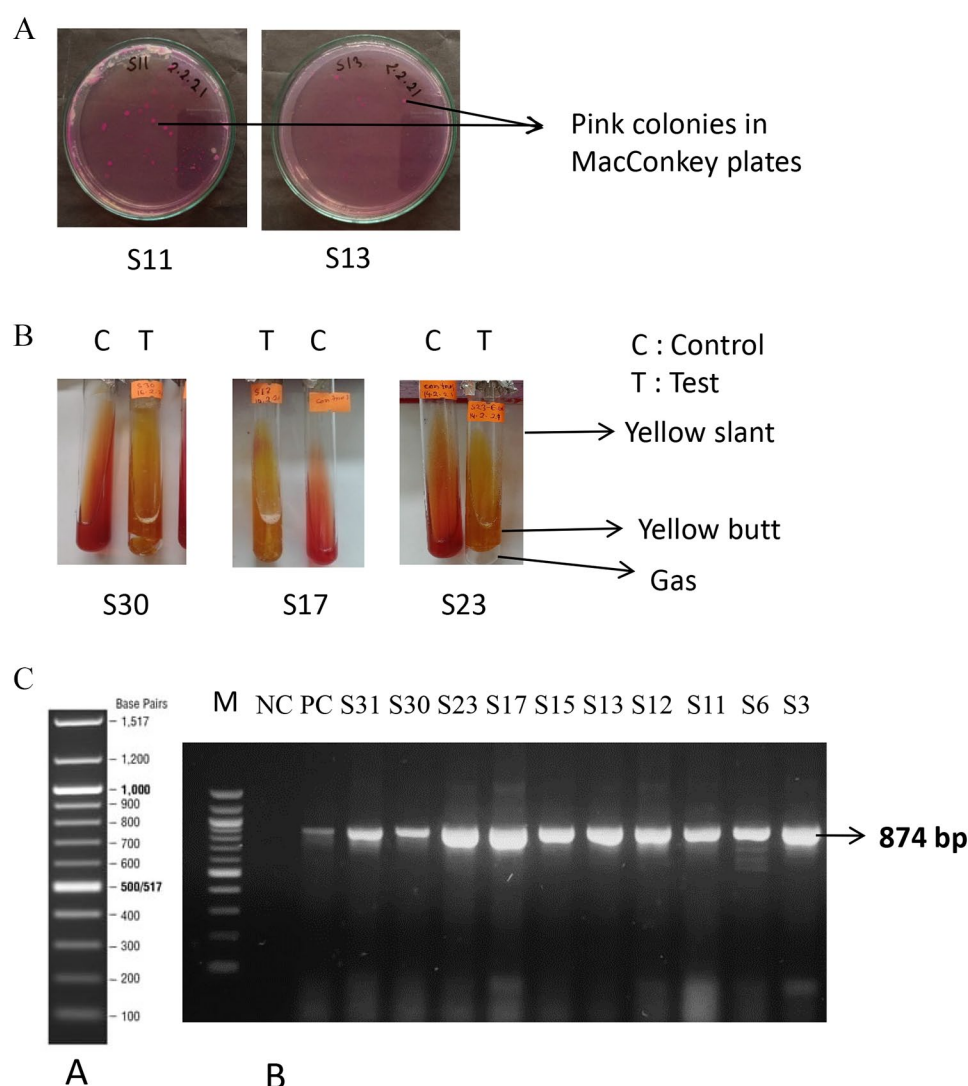


Figure 1. Screening of coliforms from drinking water: (A) selective plating of water sample in the MacConkey agar plate. Characteristic pink colonies of suspected coliforms indicated by arrows. Representative plates of some selective samples have been shown, (B) biochemical identification of suspected coliforms by TSI test. Pink colonies from MacConkey agar were inoculated on TSI slants. After incubation coliforms were identified through the observation of yellow (acidic) slant and yellow (acidic) butt with gas in the TSI slant. Representative TSI slants some selective coliforms have shown, (C) molecular confirmation of biochemically identified coliforms. A; Ladder, B: The target *lacZ* gene was amplified through PCR by using specific primers. After the completion of PCR, the PCR products were visualized through agarose gel electrophoresis. M = Marker; NC = Negative control; PC = positive control.

among the plates prepared by those samples. The samples numbers were S3, S6, S11, S12, S13, S15, S17, S23, S30, and S31 (Table 2, Figure 1A). To identify coliforms from suspected samples, a single pink colony of each plate positive for coliforms has been collected and performed the Triple Sugar Iron test (TSI). TSI agar is a differential medium that can assess the ability of a microbe to ferment lactose, which is used for the identification of coliform bacteria. In TSI, slant coliform only generated gas and the entire media remained acidic (yellow slant and yellow butt) indicating lactose fermentation. In the TSI test, suspected isolates were confirmed as coliform as they showed a specific coliform result (Table 2, Figure 1B). After the confirmation of selected isolates by TSI, the findings have also been confirmed

by molecular analysis. For molecular confirmation, the presence of the *lacZ* gene in the identified isolates has been investigated by PCR. The *lacZ* gene is a gene present in coli from that encodes the beta-galactosidase protein responsible for the breakdown of lactose. The PCR analysis revealed the presence of *lacZ* in all coliform isolates. A previously identified coliform strain was used as a positive control in this experiment (Chowdhury et al., 2020) (Figure 1C). Finally, by microbiological and molecular analysis it has been confirmed that coliforms were identified in drinking water of 10 different places of Chattogram city, Bangladesh. Finally, to further characterization, the identified coliforms have been coded as C-S3, C-S6, C-S11, C-S12, C-S13, C-S15, C-S17, C-S23, C-S30, C-S31 (Table 2).

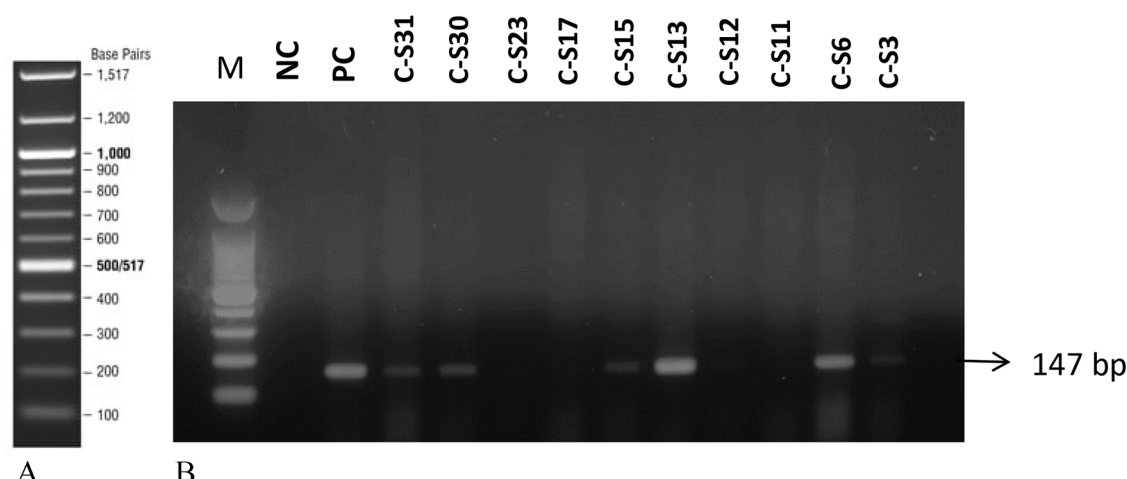


Figure 2. Identification of fecal coliforms. (A) Ladder, (B) The target *uidA* gene was amplified through PCR by using specific primers. After the completion of PCR, the PCR products were visualized through agarose gel electrophoresis. M = Marker; NC = Negative control; PC = positive control.

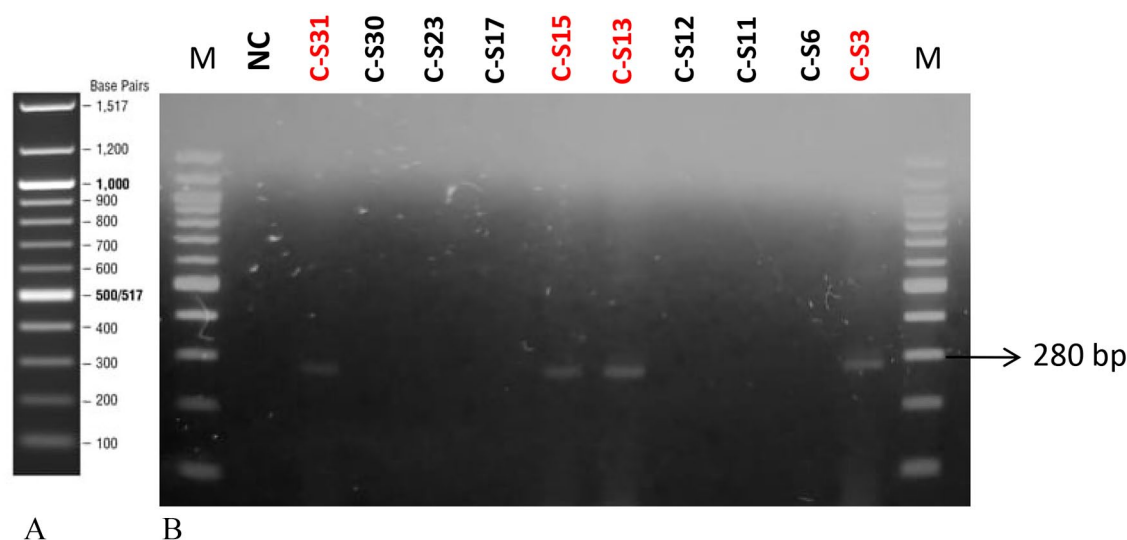


Figure 3. Detection of *int1* gene. (A) Ladder, (B) The target *int1* gene was amplified through PCR by using specific primers. After the completion of PCR, the PCR products were visualized through agarose gel electrophoresis. M = Marker; NC = Negative control.

Investigation of fecal contamination in drinking water

Identifying coliform implies whether or not fecal contamination occurred in these water samples. Screening of fecal contamination was performed by amplification of the *uidA* gene in the coliform isolates. PCR analysis revealed that six out of ten coliforms were fecal coliforms (*E. coli*) (Figure 2). In this experiment, a previously identified fecal coliform bacteria was used positive control (Chowdhury et al., 2020). The isolates containing the *uidA* gene were C-S3, C-S6, C-S13, C-S15, C-S30, and C-S31 (Figure 2).

Screening of antibiotic-resistant gene integron (*int1*) in coliforms

Antibiotic resistance is one of the main health concerns in Bangladesh. Therefore, the main objective of this study was the screening of antibiotic resistant gene *int1* in isolated coliforms.

PCR analysis revealed that four out of ten coliforms contain *int1* in their genomic DNA and those isolates were C-S3, C-S13, C-S15, and C-S31 (Figure 3).

Antibiotic resistance profiling of identified coliforms

Antibiotic resistance in different environments is quite common in Bangladesh. Furthermore, isolated coliforms carrying the *int1* gene exhibited antibiotic resistance in the identified coliforms. To justify the hypothesis, an antibiotic susceptibility test of each isolate was performed against antibiotics usually inhibited by high expression of integron. The antibiotics used in this experiment were AMP, Ciprofloxacin (CIP), and Co-trimoxazole (COT). Interestingly, antibiotic sensitivity experiment reveals that all isolates carrying the antibiotic-resistance *int1* gene were resistant to ampicillin (Figure 4). However, all isolates seem to be sensitive to other two antibiotics (Figure 4).

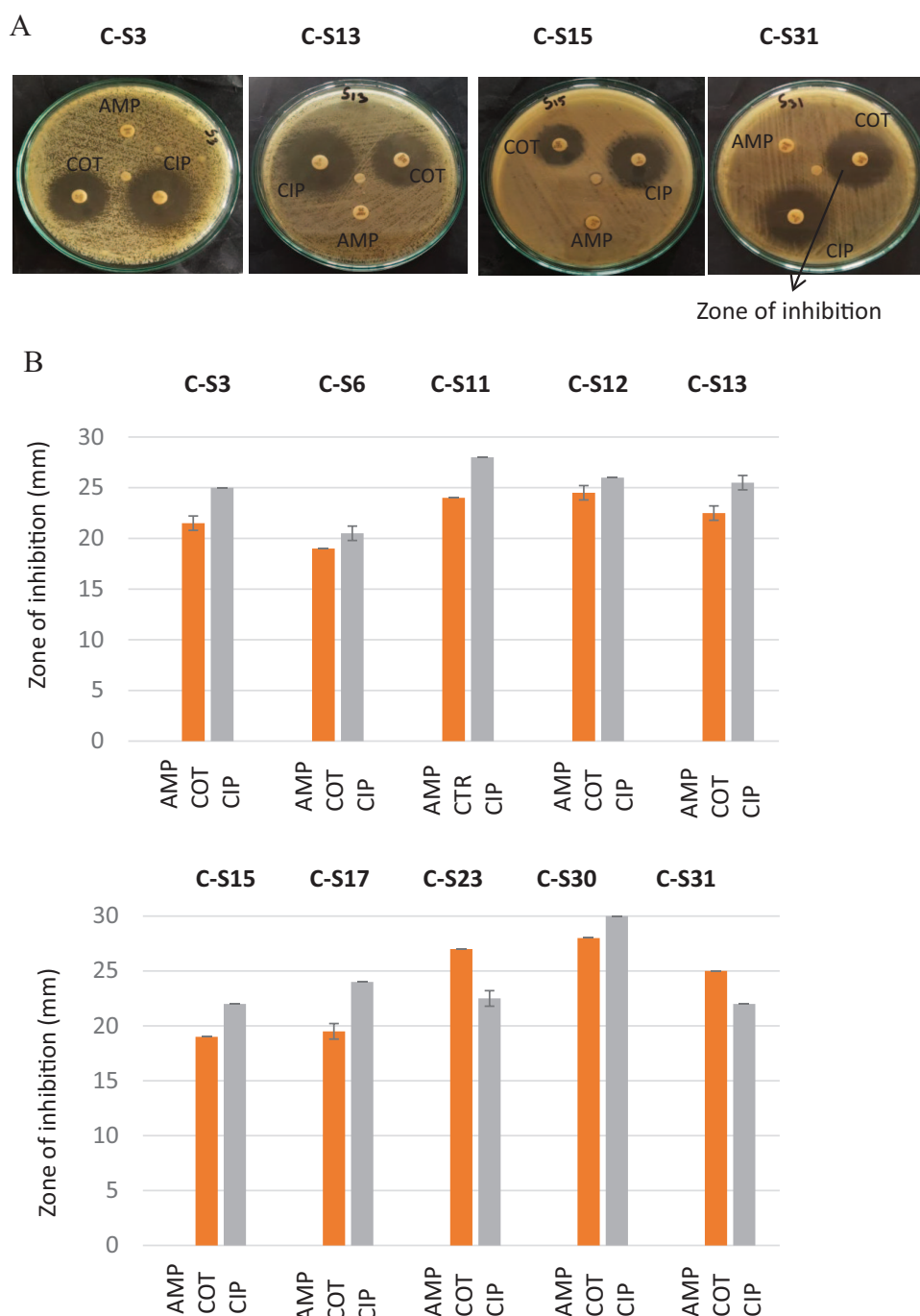


Figure 4. Antibiotic resistant profiling of isolated coliforms: (A) Antibiotic sensitivity test by Kirby-Bauer Disk diffusion method. Picture of culture plates showed zone of inhibition by *int1* gene containing coliforms against different antibiotics. CIP=Ciprofloxacin, AMP=Ampicillin, COT=Co-trimoxazole. (B) Measurement of zone of inhibition by coliform isolates against antibiotics. CIP=Ciprofloxacin, AMP=Ampicillin, COT=Co-trimoxazole. All the coliforms were resistant to ampicillin as zone of inhibition against ampicillin was not found for any of the isolate. The error bars represent data from three independent experiments (mean \pm standard deviation).

Discussion

Bangladesh is one of the most densely populated countries in the world and has a severe scarcity of safe drinking water. Most of the total population of Bangladesh has access to water, but the quality of water is always questionable. Coliform bacteria are considered the best indicator of bacteriological quality of drinking water. In order to understand bacterial contamination in drinking water in Chattogram City, Bangladesh, during this

study the prevalence of coliform bacteria was determined by collecting 31 drinking water samples from hotels, restaurants and food stores ($n=18$), hospitals and diagnostic centers ($n=9$) and public residents ($n=4$). Through microbiological and molecular investigation, coliforms were identified in 10 samples, where 9 samples were from restaurants and 1 sample was from a residential building. Interestingly, no coliform was detected in the drinking water of the hospital and diagnostic

center, which shows that the quality of the drinking water of the hospital and diagnostic centers is very good in the scene of microbial contaminations. However, the quality of the drinking water in different restaurants was not satisfactory because coliforms were identified in 50% ($n=9$) of the water samples of the hotels and restaurants. One of the main public health issues in Chattogram city Bangladesh is the poor practice of personal hygiene and sanitation. In this research, we have identified the occurrence of coliforms primarily in the drinking water in restaurants. Therefore, it is assumed that maintenance of hygiene condition might be associated with this result. It is also assumed that the source of these coliforms might be the fecal matter of personnel associated with drinking water processing and supply and indeed our prediction is proven when we examine the number of fecal coliform among the total coliforms. Our investigation reveals that 60% of the identified coliforms were *E. coli* and have an association with fecal matters of warm blooded animals. Therefore, this result represents that a variety of enteropathogenic bacteria may be present in the drinking water of different restaurants in Chattogram City, Bangladesh. Since Chattogram is the second largest city in Bangladesh, a huge number of people in this city drink this contaminated water. Consequently, a large number of people in Chattogram city are under severe threat of water-related diseases.

Antibiotic resistance and its widespread occurrence in and around Bangladesh is a major public health concern. Recently, a study has reported the occurrence of multi drug resistance coliforms in human sewage collected from different places of Chattogram city, Bangladesh (Akter et al., 2021). As a consequence, in this study we also investigate the contribution of coliform bacteria from drinking water to the occurrence of antibiotic resistance in Bangladesh. Surprisingly, in this study we found the presence of a highly important antibiotic resistance gene *int1* (integron gene) among 40% ($n=4$) of identified coliforms. Although before 1999 only few cases about the occurrence of integron class 1 have been reported, however, now it is concerning that the occurrence of integrons are common all over the world, particularly in the members of the coliform and Enterobacteriaceae family. Previous research suggested that *int1* has been associated with several resistance gene cassettes responsible for resistance against newer antibiotics (Najibi et al., 2012). Additionally, the integron gene cassette is the main source of transferable antibiotic resistant genes such as *int1* (Kheiri & Akhtari, 2016). Therefore, we assume that antibiotic resistant coliform bacteria and *int1* gene found in drinking water accelerated the spread of antibiotic resistance in this region of Bangladesh. Our hypothesis is also supported by the finding, while the phenotypic characteristics of the isolates were observed against three selective antibiotics-cotrimoxazole, ciprofloxacin and ampicillin-by the antibiotic sensitivity test, which reveals 100% of isolated bacteria including the *int1* containing isolates ($n=4$) are resistant to ampicillin. The presence of ampicillin resistant coliform in drinking water could

also be related to the wide spread occurrence of multi drug resistant coliforms in various environmental settings, as previous studies in Chattogram city, Bangladesh reported the occurrence of ampicillin resistant coliform bacteria in the hospital wastes (Naher et al., 2013) as well as in the environmental human sewage samples (Akter et al., 2021). We believe that this study reveals some serious issues about microbial contamination of drinking water and its associated risks to public health in Bangladesh. The Bangladeshi public health authorities and the World Health Organization should take the necessary initiatives to limit the contamination of drinking water by coliforms to prevent severe waterborne infections in this part of the world.

Acknowledgements

The authors are thankful to the teachers and staffs of the Department of Genetic Engineering and Biotechnology, University of Chittagong, Bangladesh.

Author Contributions

A. M. M. A. C designed this study. SAM, AKMZH, P.D., M.ZH performed the experiments; A. M. M. A. C analyzed the data; A. M. M. A. C., S.A.M. and A.K.M. Z.H wrote the original draft. A. M. M. C and S. A. M reviewed the several versions of the manuscript. All authors read and approved the final manuscript.


Declaration of Conflicting Interests

The author(s) declared no potential conflicts of interest with respect to the research, authorship, and/or publication of this article.

Funding

The author(s) received no financial support for the research, authorship, and/or publication of this article.

ORCID iDs

A. M. Masudul Azad Chowdhury  <https://orcid.org/0000-0002-1675-5075>

A. K. M. Zakir Hossain  <https://orcid.org/0000-0002-6229-8725>

Data Availability

All data analyzed during this study are included in this manuscript.

REFERENCES

- Akter, S., Chowdhury, A. M. M. A., & Mina, S. A. (2021). Antibiotic resistance and plasmid profiling of *Escherichia coli* isolated from human sewage samples. *Microbiology Insights*, 14, 11786361211016808. <https://doi.org/10.1177/11786361211016808>
- Andrews, J. M. (2001). BSAC standardized disc susceptibility testing method. *Journal of Antimicrobial Chemotherapy*, 48(Suppl. 1), 43–57. https://doi.org/10.1093/jac/48.suppl_1.43
- Ayukekbong, J. A., Ntemgwa, M., & Atabe, A. N. (2017). The threat of antimicrobial resistance in developing countries: Causes and control strategies. *Antimicrobial*

- Resistance and Infection Control*, 6, 1–8. <https://doi.org/10.1186/s13756-017-0208-x>
- Chowdhury A. M. M. A., Akter S., Mina S. A. (2020). Isolation, identification and functional characterization of *Escherichia coli* as probiotic against *Shigella* in Bangladesh. *Indian Journal of Microbiology Research*, 7(4), 313–321. <https://doi.org/10.18231/ijmr.2020.056>
- Fawell, J., & Nieuwenhuijsen, M. J. (2003). Contaminants in drinking water. *British Medical Bulletin*, 68(1), 199–208. <https://doi.org/10.1093/bmb/ldg027>
- Gorchev, H. G., & Ozolins, G. (2011). WHO guidelines for drinking-water quality. *WHO Chronicle*, 38(3), 104–108. <https://doi.org/10.1248/jhs1956.35.307>
- Johura, F. T., Tasnim, J., Barman, I., Biswas, S. R., Jubyda, F. T., Sultana, M., George, C. M., Camilli, A., Seed, K. D., Ahmed, N., & Alam, M. (2020). Colistin-resistant *Escherichia coli* carrying *mcr-1* in food, water, hand rinse, and healthy human gut in Bangladesh. *Gut Pathogens*, 12(5), 5–8. <https://doi.org/10.1186/s13099-020-0345-2>
- Katouli, M. (2010). Population structure of gut *Escherichia coli* and its role in development of extra-intestinal infections. *Iranian Journal of Microbiology*, 2(2), 59–72.
- Kheiri, R., & Akhtari, L. (2016). Antimicrobial resistance and integron gene cassette arrays in commensal *Escherichia coli* from human and animal sources in IRI. *Gut Pathogens*, 8(1), 40–10. <https://doi.org/10.1186/s13099-016-0123-3>
- Mehdi, M., Dallal, S., Omid, S., Douraghi, M., Taghi, M., Ashtiani, H., Kazem, M., Yazdi, S., & Okazi. (2018). Molecular analysis of integrons and antimicrobial resistance profile in *Shigella* spp. Isolated from acute pediatric diarrhea patients. *GMS Hygiene and Infection Control*, 13, 1–6. <https://doi.org/10.3205/dgkh000308>
- Mina, S. A., Marzan, L. W., Sultana, T., & Akter, Y. (2018). Quality assessment of commercially supplied drinking jar water in Chittagong City, Bangladesh. *Applied Water Science*, 8(1), 1–8. <https://doi.org/10.1007/s13201-018-0673-2>
- Mooij, M. J., Schouten, I., Vos, G., Van Belkum, A., Vandenbroucke-Grauls, C. M., Savelkoul, P. H., & Schultsz, C. (2005). Class 1 integrons in ciprofloxacin-resistant *Escherichia coli* strains from two Dutch hospitals. *Clinical Microbiology and Infection*, 11(11), 898–902.
- Naher, N., Alam, M. Z., & Chowdhury, A. M. A. (2013). Isolation and characterization of multidrug resistant *Escherichia coli* from hospital, dairy and student hall wastes. *Chittagong University Journal of Biological Sciences*, 5, 19–25. <https://doi.org/10.3329/cujbs.v5i1.13366>
- Najibi, S., Bakhshi, B., Fallahzad, S., Pourshafie, M. R., Katouli, M., Sattari, M., Alebouyeh, M., & Tajbakhsh, M. (2012). Distribution of class 1 integrons among enteropathogenic *Escherichia coli*. *NRC Research Press*, 58, 637–643. <https://doi.org/10.1139/w2012-035>
- Odonkor, S. T., & Ampofo, J. K. (2013). *Escherichia coli* as an indicator of bacteriological quality of water: An overview. *Microbiology Research*, 4(1), 2–12. <https://doi.org/10.4081/mr.2013.e2>
- Olaoye, O. A., & Onilude, A. A. (2009). Assessment of microbiological quality of sachet-packaged drinking water in western Nigeria and its public health significance. *Public Health*, 123(11), 729–734. <https://doi.org/10.1016/j.puhe.2009.09.015>
- Peirano, G., Agersø, Y., Aarestrup, F. M., & Dos Prazeres Rodrigues, D. (2005). Occurrence of integrons and resistance genes among sulphonamide-resistant *Shigella* spp. From Brazil. *Journal of Antimicrobial Chemotherapy*, 55(3), 301–305. <https://doi.org/10.1093/jac/dki012>
- Queipo-Ortuño, M. I., De Dios Colmenero, J., Macias, M., Bravo, M. J., & Morata, P. (2008). Preparation of bacterial DNA template by boiling and effect of immunoglobulin G as an inhibitor in real-time PCR for serum samples from patients with brucellosis. *Clinical and Vaccine Immunology*, 15(2), 293–296. <https://doi.org/10.1128/CVI.00270-07>
- Rompré, A., Servais, P., Baudart, J., De-Roubin, M.-R., & Laurent, P. (2002). Detection and enumeration of coliforms in drinking water: Current methods and emerging approaches. *Journal of Microbiological Methods*, 49(1), 31–54. [https://doi.org/10.1016/S0167-7012\(01\)00351-7](https://doi.org/10.1016/S0167-7012(01)00351-7)
- Rubino, F., Corona, Y., Pérez, J. G. J., & Smith, C. (2019). Bacterial contamination of drinking water in Guadalajara, Mexico. *International Journal of Environmental Research and Public Health*, 16, 67. <https://doi.org/10.3390/ijerph16010067>
- Suthar, S., Chhimpia, V., & Singh, S. (2009). Bacterial contamination in drinking water: A case study in rural areas of northern Rajasthan, India. *Environmental Monitoring and Assessment*, 159(1–4), 43–50. <https://doi.org/10.1007/s10661-008-0611-0>
- Szmlka, A., & Nagy, B. (2013). Multidrug resistant commensal *Escherichia coli* in animals and its impact for public health. *Frontiers in Microbiology*, 4, 258–313. <https://doi.org/10.3389/fmicb.2013.00258>
- Waturangi, D. E., Hudiono, F., & Aliwarga, E. (2019). Prevalence of pathogenic *Escherichia coli* from salad vegetable and fruits sold in Jakarta. *BMC Research Notes*, 12(1), 247–249. <https://doi.org/10.1186/s13104-019-4284-2>
- World Health Organization. (2003). *Emerging issues in water and infectious disease* (p. 24). WHO.
- World Health Organization. (2004). *Guidelines for drinking-water quality* (3rd ed.). World Health Organization.
- World Health Organization. (2011). *Safe drinking-water from desalination* (p. 28). World Health Organization WHO/HSE/WS. https://www.who.int/water_sanitation_health/publications/2011/desalination_guidance_en.pdf?%0Ahttp://apps.who.int/iris/bitstream/10665/70621/1/WHO_HSE_WSH_11.03_eng.pdf
- Wiegand, I., Hilpert, K., & Hancock, R. E. (2008). Agar and broth dilution methods to determine the minimal inhibitory concentration (MIC) of antimicrobial substances. *Nature Protocols*, 3(2), 163–175. <https://doi.org/10.1038/nprot.2007.521>
- Zuthi, M. F. R., Biswas, M., & Bahar, M. N. (2009). Assessment of supply water quality in the Chittagong city of Bangladesh. *Journal of Engineering and Applied Sciences*, 4(3), 73–80.