

## **Artillery for Conservation: The Case of the Mammals Protected by the Formosa Military Training Area, Brazil**

Authors: Silva Arimoro, Omolabake Alhambra, Reis Lacerda, Ana Cristyna, Tomas, Walfrido Moraes, Astete, Samuel, Roig, Henrique Llacer, et al.

Source: Tropical Conservation Science, 10(1)

Published By: SAGE Publishing

URL: <https://doi.org/10.1177/1940082917727654>

---

BioOne Complete ([complete.BioOne.org](https://complete.BioOne.org)) is a full-text database of 200 subscribed and open-access titles in the biological, ecological, and environmental sciences published by nonprofit societies, associations, museums, institutions, and presses.


Your use of this PDF, the BioOne Complete website, and all posted and associated content indicates your acceptance of BioOne's Terms of Use, available at [www.bioone.org/terms-of-use](https://www.bioone.org/terms-of-use).

Usage of BioOne Complete content is strictly limited to personal, educational, and non - commercial use. Commercial inquiries or rights and permissions requests should be directed to the individual publisher as copyright holder.

---

BioOne sees sustainable scholarly publishing as an inherently collaborative enterprise connecting authors, nonprofit publishers, academic institutions, research libraries, and research funders in the common goal of maximizing access to critical research.

# Artillery for Conservation: The Case of the Mammals Protected by the Formosa Military Training Area, Brazil

Tropical Conservation Science  
Volume 10: 1–13  
© The Author(s) 2017  
Reprints and permissions:  
sagepub.com/journalsPermissions.nav  
DOI: 10.1177/1940082917727654  
journals.sagepub.com/home/trc  


**Omolabake Alhambra Silva Arimoro<sup>1</sup>, Ana Cristyna Reis Lacerda<sup>2</sup>, Walfrido Moraes Tomas<sup>3</sup>, Samuel Astete<sup>2</sup>, Henrique Llacer Roig<sup>1</sup>, and Jader Marinho-Filho<sup>2</sup>**

## Abstract

Military training areas (MTA) are increasingly recognized as sites that harbor high levels of biodiversity, including large numbers of endangered species, yet their conservation value has not been rigorously assessed. Here, we studied the species richness and composition of medium- and large-sized mammals in Formosa MTA, a Brazilian military area, as a case study to assess the conservation value of military areas. We also made an evaluation of Brazilian MTAs regarding size, distributions, and representation of within ecoregion/biome compared with other protected areas. The medium- and large-sized mammal community composition fits the pattern described for the Cerrado, characterized by species of wide distributions, but locally rare. The Formosa MTA supports a relatively higher richness ( $n = 29$ ) than protected areas in nearby regions and is a refuge for eight endangered species. Our study identified 52 MTAs covering a total area of 3 million ha. Our findings highlight the relevance of Formosa MTA for the conservation of regional mammalian fauna and indicate the potential of other military areas in the context of biological conservation.

## Keywords

*Campo de Instrução de Formosa, Cerrado, mammal species, camera trap, conservation, endangered species*

Loss, degradation, and fragmentation of natural habitats are the main causes of species extinctions, potentially contributing to a decline in ecosystem function and services (Brennan & Kuvlesky, 2005; Gibbons et al., 2000). Protecting endangered species and ecosystems in situ, that is, protecting natural areas, still is the best cost–benefit approach for protecting biodiversity (Butchart et al., 2010; Geldmann et al., 2013). Thus, global efforts to avoid biodiversity loss rely heavily on the establishment of protected areas, although the simple act of creating and keeping a protected area does not guarantee that the fauna and flora, as well as the ecological processes, are preserved in the long term (Noss, 1993). As loss of natural habitat continues, protected areas become insular and interspersed within matrices of human land uses (Woodroffe & Ginsberg, 1998). Moreover, many of these protected areas are too small to support viable populations of large species over the long term, and local populations in small, isolated patches are more likely to go extinct (Wikramanayake et al., 2004). Effective conservation of biodiversity must therefore

integrate the use and protection through a landscape mosaic, identifying where the human use of the landscape can enhance the ecological integrity of the landscape as a whole (Sanderson, Redford, Vedder, Coppolillo, & Ward, 2002). In this context, military training areas (MTAs) may represent important elements for biodiversity conservation, due to their large size, the representativeness of the original ecosystem that they harbor, and their restricted access to the public (Stein, Scott, &

<sup>1</sup>Departamento de Geologia Geral e Aplicada, Instituto de Geociências, Universidade de Brasília, Brasília, DF, Brazil

<sup>2</sup>Departamento de Zoologia, Instituto de Ciências Biológicas, Universidade de Brasília, Brasília, DF, Brazil

<sup>3</sup>Empresa Brasileira de Pesquisa Agropecuária, Centro de Pesquisa Agropecuária do Pantanal, Embrapa Pantanal

Received 25 May 2017; Accepted 26 July 2017

## Corresponding Author:

Ana Cristyna Reis Lacerda, Universidade de Brasília, Campus Universitário Darcy Ribeiro, Brasília–DF, Brasília, 70910, Brazil.  
Email: acrl2@yahoo.com.br



Creative Commons Non Commercial CC BY-NC: This article is distributed under the terms of the Creative Commons Attribution-NonCommercial 4.0 License (<http://www.creativecommons.org/licenses/by-nc/4.0/>) which permits non-commercial use, reproduction and distribution of the work without further permission provided the original work is attributed as specified on the SAGE and Open Access pages (<https://us.sagepub.com/en-us/nam/open-access-at-sage>).

Benton, 2008). Many MTAs are found in some of the most biologically rich countries (Zentelis & Lindenmayer, 2015), playing an important role in protecting biodiversity and a significant number of endangered species (Cizek et al., 2013).

The Cerrado is the third richest Brazilian ecoregion with 253 mammal species, after the Amazon rainforest and the Atlantic forest (Paglia et al., 2012, updated with Gutiérrez & Marinho-Filho, 2017). The latest estimates indicate that only 47% of its original savanna-like vegetation cover remains (Beuchle et al., 2015) due to the intense transformation of natural vegetation to agricultural areas, with approximately 80 million ha being converted into pastures and agriculture, mostly in the last 50 years (Rocha, Ferreira, Ferreira, & Ferreira, 2011; Sano, Rosa, Brito, & Ferreira, 2010). On a regional scale, the main threats to the biodiversity are the adoption of a development model based on intensive and mechanized monoculture, with crops such as soybean, corn, and cotton replacing the natural landscapes, as well as the introduction of exotic grass species for intensive cattle ranching (Klink & Machado, 2005).

Brazil safeguards a large and complex network of protected areas that includes strictly protected and sustainable-use conservation reserves (International Union for Conservation of Nature [IUCN] Categories I–VI; Brazil, 2000) as well as Indian Territories and military areas. Nevertheless, integral protection conservation units cover no more than 3% of the total Cerrado area (Brazil 2016a). Most protected areas ( $n = 68$ ; total area of 107,965 km<sup>2</sup>) are environmental protection areas (IUCN Category V; Brazil 2016a) that regulate land use to protect natural resources and guarantee environmental quality for local communities while still allowing human use of the environment through management plans and zoning. However, biodiversity conservation increasingly depends on the identification of natural areas of occurrence of endangered species as well as of areas that still contain representative sets of species and natural communities to be preserved or managed at the landscape scale.

MTAs occur in all major ecosystems and are likely to be playing an important role in biodiversity conservation. This aspect, if confirmed, might be extending the protection already provided by the global protected area network (Aycrigg, Belote, Dietz, Aplet, & Fischer, 2015). However, the current location, extent, and environmental value of MTAs are poorly understood (Jenni, Peterson, Cubbage, & Jameson, 2012). Herein, we studied the species richness and composition of medium- and large-sized mammals in a Brazilian MTA that has been considered one of the priority areas for biodiversity conservation within the Cerrado biome (Brazil, 2016b). This effort represents a case study to assess the potential conservation value of military areas. We also took the

opportunity to present data on the Brazilian MTAs regarding their size and distribution.

## Method

### Study Area

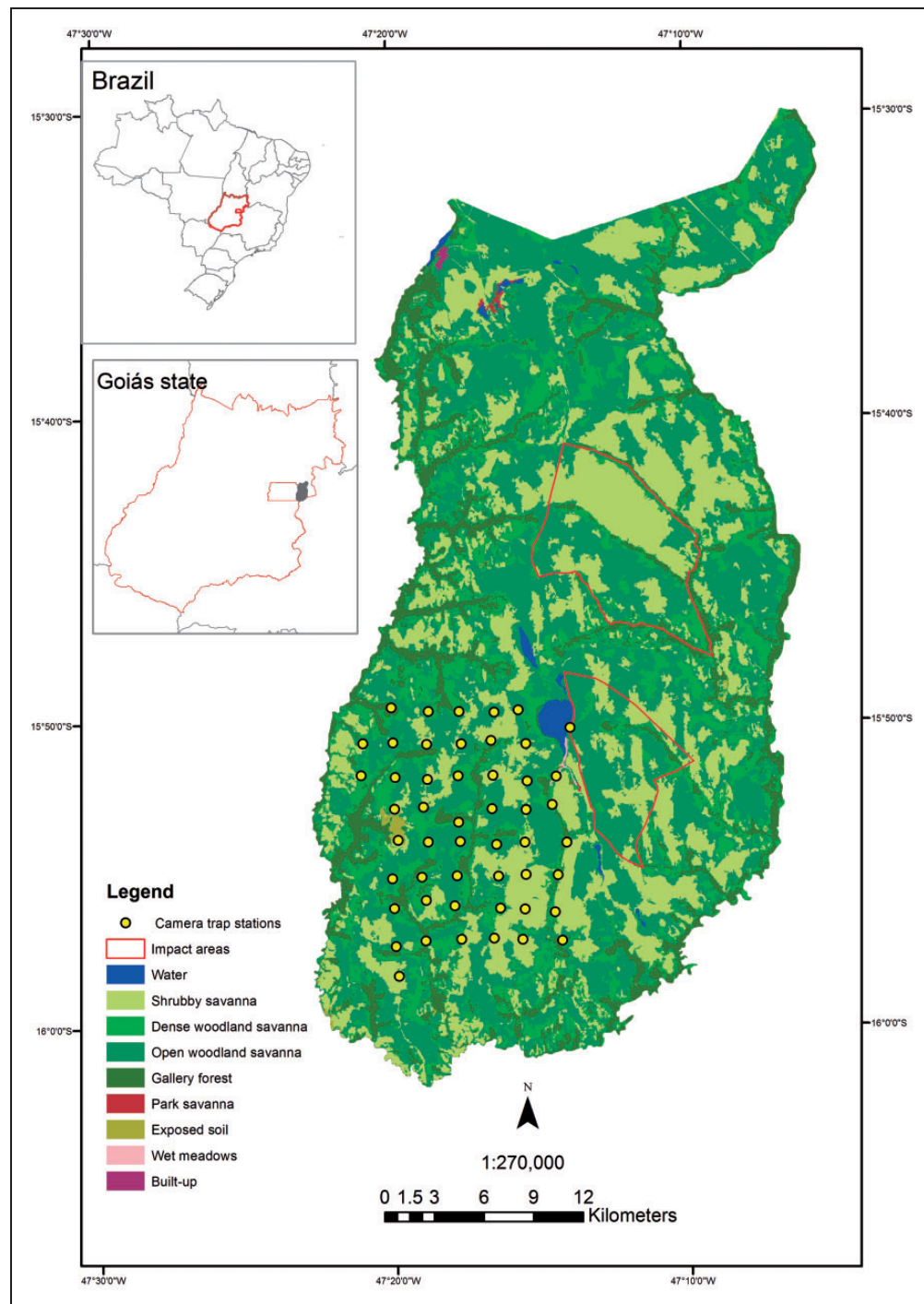
The study was carried out in the Formosa MTA, which is located in the municipality of Formosa, Goiás state, Brazil (Figure 1), between the 15°30'S and 16°03'S parallels and the 47°23'W and 47°05'W meridians, and which has an area of 114,985 ha (Figure 1). The Formosa MTA is covered by a well-preserved natural mosaic of Cerrado vegetation that includes open grasslands, shrubby grasslands with scattered trees, open woodland savannas, gallery forests, and wet meadows. The climate is tropical (Köppen Aw) with two well-defined seasons, one dry winter (May to September), and a rainy summer (October to April; Cardoso, Marcuzzo, & Barros, 2014). Access by the public is restricted. The Formosa MTA has two impact areas where rocket-launching exercises are performed (Figure 1). From the border, at a range of 2 km, the Brazilian Army established agrarian contracts with neighboring landowners and rural settlements in the form of leasing, permitting only livestock.

### Data Collection

To evaluate the potential conservation value of MTAs, during July 2014, we distributed 50 capture stations consisting of one camera trap activated by heat and motion (Bushnell Trophy Cam HD) in the Formosa MTA, excluding the impact areas where access is prohibited. From August 2014 to May 2015, we conducted a camera trap survey of medium- and large-sized mammals (*sensu* Chiarello 2000; i.e., species with adult biomass > 1 kg) using a systematic grid (Ramesh et al., 2014), covering all vegetation types present in the study area. The average minimum distance between traps was 2.0 km. The study site covered an area of 15,000 ha located in the southern portion of the Formosa MTA. Cameras were placed along animal trails or close to tracks, burrows, feces, and so on, 50 cm above the ground and left to operate for 24 hr everyday, with a minimum interval of 30 s between shots. Vegetation was removed within the view range of cameras to avoid blank shots. We checked stations at least once during each 30-day period to change batteries and verify whether cameras were working properly. On each visit, we replaced the camera memory card and also downloaded photos.

### Data Analysis

Sampling effort was calculated multiplying the number of camera traps by sampling days (1 day = 24 hr; Tobler,



**Figure 1.** Map of the study area, and camera trap locations in the Formosa Military Training Area, Goiás state, Brazil.

Carrillo-Percastegui, Pitman, Mares, & Powell, 2008). We calculated relative abundance index (RAI) for each species (Carbone et al., 2001). This index is calculated using the number of independent pictures of the focal species divided by the sampling effort. We used an interval of 24 hr between pictures of the same species to guarantee independence between them (Tobler et al., 2008).

Sampling effort was evaluated using a species accumulation curve with 1,000 simulations (Colwell, 2013). The curve was based on sampling events, considering each day as a sample. Expected richness was obtained through the nonparametric estimator Jackknife 2. This estimator is suitable for the analysis of communities with low evenness among species (Brose, Martinez, & Williams, 2003).



All the analyses were carried out using EstimateS 9.1 (Colwell, 2013). The global and national threat status for each species was accessed from the IUCN Red List (2015) and Brazilian Threatened Fauna Red List (Brazil, 2014), respectively.

### Military Training Areas in Brazil

We searched for geographic data from official government websites (Brazil 2015, 2016a, 2016c) to obtain information on the current location, extension, and size of terrestrial MTAs. Thus, several thematic layers were stored as a geodatabase, and we performed cross analysis procedures with the identified Brazilian MTAs using ARCGIS 10.1.

## Results

### Community Patterns in the Formosa MTA

A total of 29 species of medium- to large-sized mammals (nine orders and 17 families) were recorded in the Formosa MTA during our surveys (Table 1). The sampling effort with camera traps was equivalent to 426,250 trap days, which yielded 1,584 independent records. The order Carnivora was the most representative, with 12 species of five families (Table 1). The highest RAIs were of giant anteater (*Myrmecophaga tridactyla*; 25%), Pampas deer (*Ozotoceros bezoarticus*; 18%), tapir (*Tapirus terrestris*; 11%), and maned wolf (*Chrysocyon brachyurus*; 9%; Figure 2). The smallest RAIs were obtained for Neotropical otter (*Lontra longicaudis*), crab-eating raccoon (*Procyon cancrivorus*), six-banded armadillo (*Euphractus sexcinctus*), jaguarundi (*Herpailurus yagouaroundi*), black howler (*Alouatta caraya*), and black-striped capuchin (*Cebus libidinosus*; Figure 2). Eight species are considered as threatened with extinction by the Brazilian official list of endangered species (Brazil, 2014; Table 1). Four domestic species were recorded in study area: *Canis familiaris*, *Sus scrofa*, *Bos sp.*, and *Equus caballus*. The accumulation curve did not reach an asymptote, and the expected richness was 37 species (Figure 3).

### Military Training Areas in Brazil

We identified 52 MTAs from official Brazilian government websites. The MTAs cover a total area of 2,928,372 ha; however, the number and size of MTAs vary among biomes (Table 2). The largest MTA is the *Serra do Cachimbo*, located in Amazon, in southern Pará state (Figure 4). This single MTA contains 2,214,381 ha of continuous forests, an area comparable in size to Israel (Table 2). The second largest MTA is also located in the Amazon and contains 256,989 ha (in the state of

Roraima). Altogether, the two MTAs account for more than 0.6% of the Amazon biome. In contrast, 44% of the MTAs are smaller than 1,000 ha (Table 3).

## Discussion

Our study corroborates the idea that MTAs may have a high conservation value based on the presence of a rich biodiversity and the occurrence of endangered species (Delaney et al., 2011). The species richness (29 spp.) found in the Formosa MTA represents approximately 62% of the medium- and large-sized species recorded in all the Cerrado range (Marinho-Filho et al., 2002; Paglia et al., 2012) and is higher than the richness found in the three other protected areas located in the Federal District combined ( $N=24$ ; Juarez, 2008). Other studies carried out in the Cerrado reported species richness between 15 and 29 species (Alves, 2014; Bocchiglieri, Mendonça, & Henriques, 2010; Bruna et al., 2010; Rocha & Dalponte, 2006; Rodrigues et al., 2002; Lessa, Alves, Lena, & Barreto, 2012; Moreira et al., 2008; Ribeiro & Melo, 2013). However, the species accumulation curve does not show an asymptotic tendency, indicating that the species richness in the Formosa MTA should be even higher. Some species, such as hoary fox (*Lycalopex vetulus*), are known to occur in the region but are rare and can be difficult to detect. Additional fieldwork with combination of different sampling methods may increase the number of mammal species.

The community structure of the medium- and large-sized mammals at the Formosa MTA resembles the natural pattern described for the Cerrado elsewhere, which is characterized by species of wide distribution ranges, inhabiting a great variety of environments, but that tend to be locally rare (Marinho-Filho, Rodrigues, & Juarez, 2002). Flagship species for Cerrado conservation, such as the *M. tridactyla*, *O. bezoarticus*, *T. terrestris*, and *C. brachyurus*, are relatively abundant in the study area probably due to the size and conservation status of Formosa MTA and the its habitat heterogeneity. These species are threatened with extinction due to habitat loss and fragmentation caused mainly by agricultural expansion, hunting pressure, and the long-term negative effects of isolation and small population size (Brazil, 2014). However, RAI has clear limitations to assess animal abundance, as already largely discussed in the current literature (Rovero, Martin, Rosa, Ahumada, & Spitalé, 2014; Treves, Mwina, Plumptre, & Isoke, 2010), since it does not consider detection probability. Thus, these patterns are probably an underestimation of the real occupancy probabilities, so that species occurrence rates can be even higher in the Formosa MTA. Species considered rare or absent in other areas of Cerrado, such as the pampas cat (*Leopardus colocolo*), the tayra (*Eira barbara*), and the ocelot (*Leopardus pardalis*; Bocchiglieri

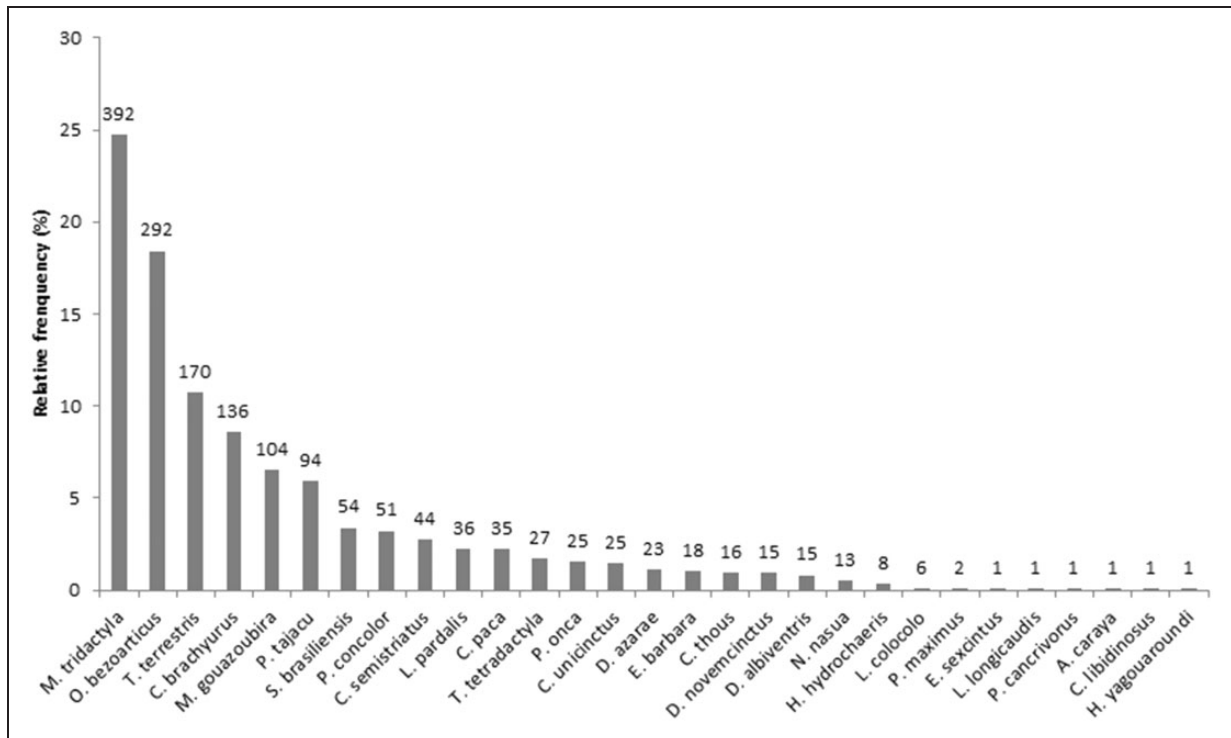
**Table 1.** Mammals Recorded at the Formosa Military Training Area (Formosa, Goiás State, Brazil) and National and Worldwide (IUCN Red List) Threatened Status.

Taxon	Common name	Conservation status	
		Brazilian threatened fauna red list	IUCN
Didelphimorphia			
Didelphidae			
<i>Didelphis albiventris</i> (Lund, 1840)	White-eared Opossum		Least concern
Cingulata			
Dasyopodidae			
<i>Cabassous unicinctus</i> (Linnaeus, 1758)	Southern naked-tailed armadillo	Least concern	
<i>Dasybus novemcinctus</i> (Linnaeus, 1758)	Nine-banded armadillo		Least concern
<i>Euphractus sexcinctus</i> (Linnaeus, 1758)	Six-banded armadillo		Least concern
<i>Priodontes maximus</i> (Kerr, 1792)	Giant armadillo	Vulnerable	Vulnerable
Pilosa			
Myrmecophagidae			
<i>Myrmecophaga tridactyla</i> (Linnaeus, 1758)	Giant anteater	Vulnerable	Vulnerable
<i>Tamandua tetradactyla</i> (Linnaeus, 1758)	Southern tamandua		Least concern
Primates			
Atelidae			
<i>Alouatta caraya</i> (Humboldt, 1812)	Black howler		Least concern
Cebidae			
<i>Cebus libidinosus</i> (Spix, 1823)	Black-striped capuchin		Least concern
Rodentia			
Caviidae			
<i>Hydrochoerus hydrochaeris</i> (Linnaeus, 1766)	Capybara		Least concern
Dasyproctidae			
<i>Dasyprocta azarae</i> (Lichtenstein, 1823)	Azara's agouti		Data deficient
Cuniculidae			
<i>Cuniculus paca</i> (Linnaeus, 1766)	Spotted paca		Least concern
Lagomorpha			
Leporidae			
<i>Sylvilagus brasiliensis</i> (Linnaeus, 1758)	Tapeti		Least concern
Carnivora			
Felidea			
<i>Herpailurus yagouaroundi</i> (É. Geoffroy Saint-Hilaire, 1803)	Jaguarundi	Vulnerable	Least concern
<i>Leopardus colocolo</i> (Molina, 1782)	Pampas cat	Vulnerable	Near threatened

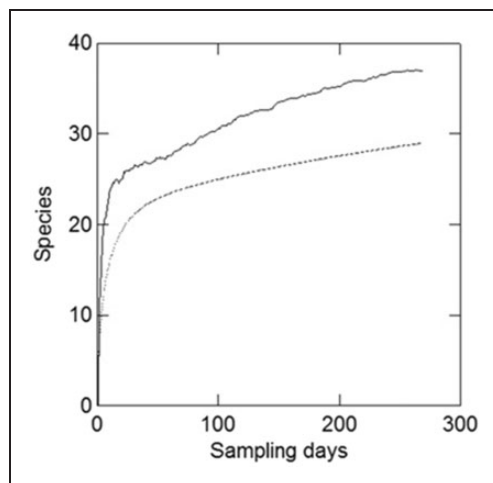
(continued)

Table 1. Continued

Taxon	Common name	Conservation status	
		Brazilian threatened fauna red list	IUCN
<i>Leopardus pardalis</i> (Linnaeus, 1758)	Ocelot		Least concern
<i>Puma concolor</i> (Linnaeus, 1771)	Cougar	Vulnerable	Least concern
<i>Panthera onca</i> (Linnaeus, 1758)	Jaguar	Vulnerable	Near threatened
Canidae			
<i>Cerdocyon thous</i> (Linnaeus, 1766)	Crab-eating fox		Least concern
<i>Chrysocyon brachyurus</i> (Illiger, 1815)	Maned wolf	Vulnerable	Near threatened
Mustelidae			
<i>Lontra longicaudis</i> (Olfers, 1818)	Neotropical otter		Near threatened
<i>Eira barbara</i> (Linnaeus, 1758)	Tayra		Least concern
Mephitidae			
<i>Conepatus semistriatus</i> (Boddaert, 1785)	Striped hog-nosed skunk		Least concern
Procyonidae			
<i>Nasua nasua</i> (Linnaeus, 1766)	South American coati		Least concern
<i>Procyon cancrivorus</i> (G.[Baron] Cuvier, 1798)	Crab-eating raccoon		Least concern
Perissodactyla			
Tapiridae			
<i>Tapirus terrestris</i> (Linnaeus, 1758)	Lowland tapir	Vulnerable	Vulnerable
Artiodactyla			
Tayassuidae			
<i>Pecari tajacu</i> (Linnaeus, 1758)	Collared peccary		Least concern
Cervidae			
<i>Mazama gouazoubira</i> (G. Fischer [von Waldheim], 1814)	Gray brocket		Least concern
<i>Ozotoceros bezoarticus</i> (Linnaeus, 1758)	Pampas deer	Vulnerable	Near threatened



**Figure 2.** Relative frequency (%) and number of records by species (over the bar) of medium-sized and large mammals in the military training area, Formosa, Goiás state, Brazil, from August 2014 to May 2015.



**Figure 3.** Species accumulation curve (dashed line) and expected richness (solid line) for medium-sized and large mammals at a military training area, located in the municipality of Formosa, Goiás state, Brazil.

et al., 2010; Bruna et al., 2010; Lessa et al., 2012; Ribeiro & Melo, 2013) were recorded in the Formosa MTA. In spite of the low probability of detection of tree dwelling species by ground-level camera-trapping methods, we

recorded two primate species restricted to forest habitats, *A. caraya* and *C. libidinosus*.

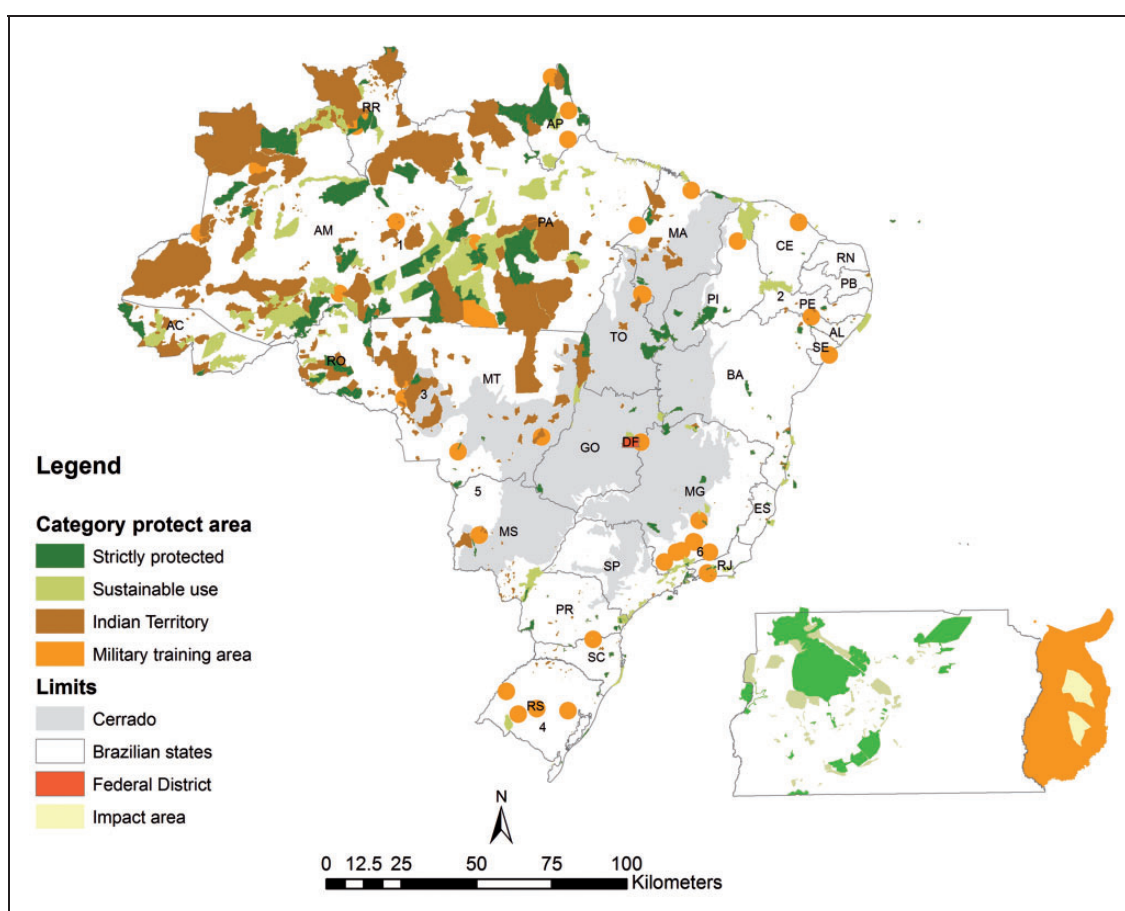
The presence of top predators at the study area, such as the jaguar (*Panthera onca*) and cougar (*Puma concolor*), is remarkable. They are strong indicators of environmental quality (Swank & Teer, 1989), but their populations may be facing a negative trend. Even considering that 32% of the Cerrado can still harbor *P. onca* populations, they are distributed in small fragmented subpopulations suffering continued decline (Morato, Beisiegel, Ramalho, Campos, & Boulhosa, 2013). A population of 323 adult jaguars is estimated to live throughout the biome (Moraes, 2012).

The giant armadillo (*Priodontes maximus*) and two pecary species are also indicators of pristine environments (Desbiez et al., 2012). The giant armadillo is described as an ecosystem engineer since its excavations change the biotic and abiotic characteristics of its environment, providing shelter for predators and thermal shelter for numerous species (Desbiez & Kluyber, 2013). It is considered extinct in most natural areas of Southern Brazil (Marinho-Filho & Medri, 2008). Other species that had their populations reduced or were locally extinct in other Cerrado areas due to intensive poaching—such as the Azara's agouti (*Dasyprocta azarae*) and the collared pecary (*Pecari tajacu*; Azevedo & Conforti, 2008; Chiarello, 1999)—seem to be abundant in the Formosa MTA. These



**Table 2.** A Summary of the Number (N) and Area (ha) of the Brazilian Protected Area Categories Located in Each Biogeographical Subregion (Brazil, 2015, 2016a, 2016c).

Category	Subregion											
	Amazon		Caatinga		Cerrado		Atlantic Forest		Pampa		Pantanal	
	N	ha	N	ha	N	ha	N	ha	N	ha	N	ha
Strictly protected	81	41,749,300	34	989,300	119	6,281,300	358	2,821,000	13	62,800	7	440,300
Sustainable use	245	71,970,600	124	5,359,300	264	11,119,000	741	8,358,200	13	42,320	17	248,800
Indigenous land	412	95,024,790	39	2,759	111	8,644,546	140	666,867	6	2,759	8	268,213
Military areas	17	2,659,464	5	3,665	9	164,865	11	19,259	4	80,995	1	123
Total protected areas	755	211,404,154	202	6,628,595	503	26,209,711	1,250	11,865,326	36	569,754	33	957,436
Total area of biome		419,855,100		82,793,400		204,016,700		111,757,100		1,787,040		15,115,900



**Figure 4.** Brazilian federal network of protected areas including strictly protected and sustainable-use conservation reserves, Indian Territory, and military training areas (MTAs). Points were placed in MTAs locations to increase visibility of smaller areas. In detail, the location of the Formosa MTA, at Goiás state, and three other protected core areas in the Federal District, Brazil (Source. Brazil 2015, 2016a, 2016c).

are all indications of the importance of Formosa MTA for the conservation of the Cerrado's large mammals.

It may seem paradoxical that an area subjected to military use could provide habitat for a disproportionately large numbers of sensitive and endangered species that

require large and undisturbed areas. However, military training is often restricted in space and time. During our research, one large magnitude training with the participation of 2,000 marines and launching rockets exercise occurred in October 2014 and lasted a week. The use of

**Table 3.** Distribution of Military Training Areas by Sizes Class (ha) and the Total Area (ha) of the Class.

Size class (ha)	Number	%	Total area (ha)
1–1,000	23	44	7,351
1,001–2,000	6	12	8,639
2,001–3,000	5	10	12,797
3,001–4,000	1	2	3,603
4,001–5,000	2	4	8,851
5,001–6,000	4	8	22,660
7,001–8,000	1	2	7,918
9,001–10,000	2	4	19,226
15,001–16,000	1	2	15,320
28,001–29,000	1	2	28,327
49,001–50,000	1	2	49,977
61,001–62,000	1	2	61,549
95,001–96,000	1	2	95,799
114,001–115,000	1	2	114,985
256,001–257,000	1	2	256,989
2,214,001–2,215,000	1	2	2,214,381
Total	52	100	2,928,372

live ammunitions and rocket launching exercises are restricted to impacted areas that are surrounded by large buffer or safety zones. Tanks and other heavy vehicles tend to be used on well-defined tracks or dirty roads. The net result is that only a small fraction of the area is impacted and tends to diminish with distance from established targets (Houston & Doe, 2005). Thus, MTAs provide vast portions of habitat for species that are disturbance sensitive (Gazenbeek, 2005).

Lindenmayer et al. (2016) quantified the effects of military training on vertebrates at Beecroft Weapons Range in south-eastern Australia. They found no differences in species richness when comparing it within and outside the impact area for mammals and reptiles. However, bird species richness was seemingly reduced within the impact area. The authors also report negative responses by several groups of bird species to burned areas. Mammal species richness and several individual species of mammals were most likely to be recorded on sites characterized by a relatively long time since wildfires (Lindenmayer et al., 2016). In North America, the endangered Sonoran pronghorn antelope (*Antilocapra americana sonoriensis*) exhibits a significant preference for high explosive target areas, presumably in response to increased productivity of grasses and forbs in those areas (Krausman et al., 2005). Similarly, the occupancy probability for *O. bezoarticus* may have been positively influenced by the recent burning of open grassland areas (Arimoro, 2015) in the Formosa MTA. By promoting rapid vegetation regrowth and inducing flowering, fire

provides an abundant supply of the preferred food resource to *O. bezoarticus* during dry seasons (Rodrigues et al., 2002). Additional research is needed to address potential impacts of military activity on animal populations (Lawrence, Zolderdo, Struthers, & Cooke, 2015), but it seems to be related to the amount of available natural cover, topography, and type and intensity of military activity (Delaney et al., 2011; Gese, Rongstad, & Mytton, 1989; Quist, Fay, Guy, Knapp, & Rubenstein, 2003; Smith, Turner, & Rusch, 2002).

The greatest threat to wildlife seems to come from outside the MTA boundaries. The confirmed co-occurrence of domesticated pigs may represent a significant threat to the survival of peccaries at Formosa MTA, due to the risk of transmission of infectious diseases, such as brucellosis and leptospirosis (Paes et al., 2009), and to a potential overlap of food niches with native peccaries (Galetti et al., 2015). There is evidence that competition among peccaries and feral pigs in the Pantanal wetland is not an issue of concern (Oliveira-Santos, Dorazio, Tomas, Mourão, & Fernandez, 2011). However, climate conditions found in the Cerrado may impose different constraints to these species, associated to resource limitation during the dry season.

There are also indications of hunting pressure on mammal species at Formosa MTA. Our camera traps recorded domestic dogs accompanying people on horseback in both daytime and at night. Dogs also can exert negative edge effects in a fragment of an original landscape composed by a mosaic of different habitat types in a matrix of highly modified rural and urban landscape (Lacerda, Tomas, & Marinho-Filho, 2009). The presence of large, wide-ranging species in this area emphasize the need for regional planning to provide dispersal opportunities, linking areas of original landscape mosaics, such as Formosa MTA, to other protected areas through the matrix of highly modified landscapes.

In Brazil, nearly 2% (3 million ha) of public forests are categorized as MTAs (Brazil, 2015). These lands cover a wide range of natural habitats and ecosystems in the main Brazilian biomes. Most of these areas (91%) are covered by Amazonian forests, the richest terrestrial ecosystem worldwide, which harbors approximately 40% of the remaining rainforests in the world (Instituto Nacional de Pesquisas Espaciais, 2004). A smaller fraction (6%) of Brazilian MTAs lies on the Cerrado biome, one of the world's hotspots of biodiversity (Myers, Mittermeier, Mittermeier, Fonseca, & Kent, 2000).

## Implications for Conservation

Zentelis and Lindenmayer (2015) estimated that MTAs cover at least 1% of the earth's terrestrial surface. In Brazil, MTAs cover an area of approximately 3 million ha. The existence of the MTAs has often acted as a brake

on the intensification of land use (Gazenbeek, 2005). For instance, the Marechal Newton Cavalcanti MTA, state of Pernambuco, Brazil, established in 1944 through the expropriation of sugarcane plantations, was surrounded by fragments of Atlantic forest remnants since the Brazil wood cycle in XVI century. Today, the Marechal Newton Cavalcanti MTA is a mosaic of ombrophilous and semi-deciduous forests at various stages of natural regeneration and has been so for over 60 years (Guimarães, Braga & Oliveira, 2012), preserving the largest block of continuous Atlantic Forest located to the north of the São Francisco River (Lucena, 2009). This area is a refuge to four endemic bird species of the so-called Pernambuco Endemism Center as well as two other bird species endemic to the Atlantic Forest (Pereira, Araújo, & Azevedo-Júnior, 2016). Furthermore, the area harbors 18 angiosperm species endemic to the Brazilian Atlantic Forest (Stehmann et al., 2009) and the *Connarus blanchetii* tree, endemic to Pernambuco Endemism Center (Siqueira-Filho & Tabarelli, 2006). Moreover, military areas may also have inhibitory effect on agricultural frontier expansion in the Amazon Forest. The Brigadeiro Velloso MTA, at Serra do Cachimbo, a large tropical forest reserve seemingly acts as a major barrier against deforestation at the border of Mato Grosso and Pará states (Soares-Filho et al., 2010).

MTAs may have an important complementarity role to the system of formal protected areas. Forty-four percent of the Brazilian MTAs are smaller than 1,000 ha, but small areas should not be overlooked. In Atlantic Forest, small fragments constitute a large fraction of the forest remnants (83.4% with < 50 ha) and are essential in enhancing connectivity to the larger ones (Ribeiro, Metzger, Martensen, Ponzoni, & Hirota, 2009). Linking community forests, Indian Territory, and strictly protected areas is recognized as one of the most effective and recommended strategies for conserving the rainforest (Nepstad et al., 2006). Although there are potential conflicts between the military use and protection of nature (Jenni et al., 2012), the balance of these forces has been sought in a growing number of military areas trying to avoid the negative effects of human intervention in ecosystems, mainly through compliance with environmental laws (e.g., Brazil, 2010). Similar configurations may also occur in a number of countries, biomes, and ecosystems, which may function as an important and positive vector for the conservation of a great diversity of large wide-ranging mammals as well as of the ecological processes they perform in the ecosystems in which they live.

### Acknowledgments

We are grateful to the Formosa Military Training Area for logistic support and to Rogério E. S. Uagoda (Lab of Physical Geography/UNB) for the coordination of the technical cooperation agreement between the University of Brasília and the Brazilian Army. We are

grateful to the Programa de Pós-graduação em Geociências Aplicadas, UNB for the financial and logistic support for fieldwork, to the Coordenação de Aperfeiçoamento de Pessoal de Nível Superior (CAPES) for the fellowships to O. A. S. Arimoro, and to the Conselho Nacional de Desenvolvimento Científico e Tecnológico (CNPq; Proc 506359/2013-1) for the support of a post-doctoral fellowship to S. Astete, and J. Marinho-Filho is grateful for financial support from CNPq (Proc. 309182/2013-1) and FAPDF/CNPq (PRONEX193000563-2009)

### Declaration of Conflicting Interest

The author(s) declared no potential conflicts of interest with respect to the research, authorship, and/or publication of this article.

### Funding

The author (s) disclosed the receipt of the following financial support for research, authorship and/or publication of this article: We are grateful to the Programa de Pós-graduação em Geociências Aplicadas, UNB for the financial and logistic support for fieldwork, to the Coordenação de Aperfeiçoamento de Pessoal de Nível Superior (CAPES) for the fellowships to O. A. S. Arimoro, and to the Conselho Nacional de Desenvolvimento Científico e Tecnológico (CNPq; Proc 506359/2013-1) for the support of a post-doctoral fellowship to S. Astete, and J. Marinho-Filho is grateful for financial support from CNPq (Proc. 309182/2013-1) and FAPDF/CNPq (PRONEX193000563-2009).

### References

- Alves, G. B. (2014). Medium and large-sized mammals of a fragment of cerrado in the Triângulo Mineiro region, Southeastern Brazil. *Bioscience Journal*, 30, 863–873.
- Arimoro, O. A. S. (2015). Uso de geotecnologias aplicadas em estudos de modelos de ocupação e conectividade para mamíferos de médio e maior porte no cerrado. Use of applied geotechnology in studies of occupancy models and connectivity mammals of medium and large-sized in the Cerrado. Dissertação de Mestrado. Universidade de Brasília, Brazil.
- Aycrigg, J. L., Belote, R. T., Dietz, M. S., Aplet, G. H., & Fischer, R. A. (2015). Bombing for Biodiversity in the United States, Response to Zentelis & Lindenmayer 2015. *Conservation Letters*, 8, 306–307.
- Azevedo, F. C. C., & Conforti, V. C. (2008). Decline of peccaries in a protected subtropical forest of Brazil: Toward conservation issues. *Mammalia*, 72, 82–88.
- Beuchle, R., Grecchi, R. C., Shimabukuro, Y. E., Seliger, R., Eva, H. D., Sano, E., & Achard, F. (2015). Landcover changes in the Brazilian Cerrado and Caatinga biomes from 1990 to 2010 based on a systematic remote sensing sampling approach. *Applied Geography*, 58, 116–127.
- Bocchiglieri, A., Mendonça, A. F., & Henriques, R. P. B. (2010). Composition and diversity of medium and large size mammals in the Cerrado of central Brazil. *Biota Neotropica*, 10, 169–176. Retrieved from <http://dx.doi.org/10.1590/S1676-06032010000300019>.
- Brazil (2000). Lei No 9.985 (de 18 de Julho de 2000).
- Brazil (2010). Portaria No. 1138 (de 22 de Novembro de 2010).



- Brazil (2014). Portaria No. 444 (de 17 de dezembro de 2014). Diário Oficial da República Federativa do Brasil, Brasília, DF, n.45 (18 de dezembro de 2014), Seção I, p. 121.
- Brazil (2015). Cadastro Nacional de Florestas Públicas. Serviço Florestal Brasileiro, Ministério do Meio Ambiente. Retrieved from <http://www.florestal.gov.br/cadastro-nacional-de-florestas-publicas>.
- Brazil (2016a). Cadastro Nacional de Unidades de Conservação. Ministério do Meio Ambiente. Retrieved from <http://www.mma.gov.br/areas-protegidas/cadastro-nacional-de-ucs>.
- Brazil (2016b). Portaria No. 223 (de 21 de Junho de 2016).
- Brazil (2016c). Terras indígenas. Fundação Nacional do Índio. Retrieved from <http://www.funai.gov.br/>.
- Brennan, L. A., & Kuvlesky, W. P. (2005). North American grassland birds, an unfolding conservation crisis? *Journal of Wildlife Management*, 69, 1–13.
- Brose, U., Martinez, N. D., & Williams, R. J. (2003). Estimating species richness, sensitivity to sample coverage and insensitivity to spatial patterns. *Ecology*, 84, 2364–2377.
- Bruna, E. M., Guimarães, J. F., Lopes, C. T., Duarte, P., Gomes, A. N. L., Belentani, S. C. S., Pacheco, R., ... Vasconcelos, H. L. (2010). Mammalia, Estação Ecológica do Panga, a cerrado protected area in Minas Gerais State, Brazil. *CheckList*, 6, 668–675.
- Butchart, S. H. M., Walpole, M., Collen, B., Strien, A., van Scharlemann, J. P.W., Almond, R. E. A., Baillie, E.M., ... Watson, R. (2010). Global biodiversity: Indicators of recent declines. *Science*, 328, 1164–1168.
- Carbone, C., Christie, S., Conforti, K., Coulson, T., Franklin, N., Ginsberg, J. R., & Shahrudin, W. N. W. (2001). The use of photographic rates to estimate densities of tigers and other cryptic mammals. *Animal Conservation*, 4, 75–79.
- Cardoso, M. R. D., Marcuzzo, F. F. N., & Barros, J. R. (2014). Climatic classification of Köppen-Geiger for the state of Goiás and the Federal District. *Acta Geográfica*, 8, 40–55.
- Chiarello, A. G. (1999). Effects of fragmentation of the Atlantic forest on mammal communities in south-eastern Brazil. *Biological Conservation*, 89, 71–82.
- Chiarello, A. G. (2000). Density and population size of mammals in remnants of Brazilian Atlantic Forest. *Conservation Biology*, 14, 1649–1657.
- Cizek, O., Vrba, P., Benes, J., Hrazsky, Z., Koptik, J., Kucera, T., ... Konvicka, M. (2013). Conservation potential of abandoned military areas matches that of established reserves: Plants and butterflies in the Czech Republic. *PLoS ONE*, 8(1): e53124. Retrieved from <http://doi.org/10.1371/journal.pone.0053124>.
- Colwell, R. K. (2013). EstimateS 9.1.0. Statistical estimation of species richness and shared species from samples. Version, 9.1. Storrs, USA: University of Connecticut. Retrieved from <http://purl.oclc.org/estimates>.
- Delaney, D. K., Pater, L. L., Carlile, L. D., Spadgenske, E. W., Beaty, T. A., & Melton, R. H. (2011). Response of red-cockaded woodpeckers to military training operations. *Wildlife Monographs*, 177, 1–38.
- Desbiez, A. L. J., Keuroghlian, A., Beisiegel, B. M., Medici, E. P., Gatti, A., Pontes, A. R. M., ... Azevedo, F. C. (2012). Avaliação do risco de extinção do cateto Pecari tajacu Linnaeus, 1758, no Brasil [Evaluation of the extinction risk of collared peccary (Pecari tajacu Linnaeus, 1758) in Brazil]. *Biodiversidade Brasileira*, 1, 74–83.
- Desbiez, A. L. J., & Kluyber, D. (2013). The role of giant armadillos (*Priodontes maximus*) as physical ecosystem engineers. *Biotropica*, 45, 537–540.
- Galetti, M., Camargo, H., Siqueira, T., Keuroghlian, A., Donatti, C. I., Jorge, M. L. S. P., ... Ribeiro, M. C. (2015). Diet overlap and foraging activity between feral pigs and native peccaries in the Pantanal. *PLoS ONE*, 10(11): e0141459 doi:10.1371/journal.pone.0141459.
- Gazenbeek, A. (2005). *LIFE, Natura 2000 and the military. Life Focus—Journal of the European Commission, Environment Directorate General Life III Program (2000–2006)*. Luxembourg: European Communities. Retrieved from [http://ec.europa.eu/environment/life/publications/lifepublications/life-focus/documents/military\\_en.pdf](http://ec.europa.eu/environment/life/publications/lifepublications/life-focus/documents/military_en.pdf).
- Geldmann, J., Barnes, M., Coad, L., Craigie, I. D., Hockings, M., & Burgess, N. D. (2013). Effectiveness of terrestrial protected areas in reducing habitat loss and population declines. *Biological Conservation*, 161, 230–238.
- Gese, E. M., Rongstad, O. J., & Mytton, W. R. (1989). Changes in coyote movements due to military activity. *The Journal of Wildlife Management*, 53, 334–339.
- Gibbons, J. W., Scott, D. E., Ryan, T. J., Buhlmann, K. A., Tuberville, T. D., Metts, B. S., ... Poppy, S. (2000). The global decline of reptiles, déjà vu amphibians. *BioScience*, 50, 653–666.
- Guimarães, H. de B., Braga, R. A. P., & de Oliveira, T. H. (2012). Evolution of the environmental status of the Atlantic forest fragments in the metropolitan area of Recife, Pernambuco, Brazil. *Revista Brasileira de Ciências Agrárias*, 7, 306–314.
- Gutiérrez, E. E., & Marinho-Filho, J. (2017). The mammalian faunas endemic to the Cerrado and the Caatinga. *Zookeys*, 644, 105–157.
- Houston, S. T., & Doe, W. W. III (2005). Characterization of munitions disturbance and contaminant loading. *Federal Facilities Environmental Journal*, 15, 15–25.
- Instituto Nacional de Pesquisas Espaciais. (2004). *Monitoramento da floresta amazônica brasileira por satélite, Projeto Prodes [Monitoring of the Brazilian Amazonian Forest by satellite, Prodes Project]*. São Paulo, Brazil: INPE, São José dos Campos.
- IUCN. (2015). *The IUCN red list of threatened species*. Cambridge, UK: IUCN Global Species Programme Red List. Retrieved from <http://www.iucnredlist.org/>.
- Jenni, G. D. L., Peterson, M. N., Cabbage, F. W., & Jameson, J. K. (2012). Assessing biodiversity conservation conflict on military installations. *Biological Conservation*, 153, 127–137.
- Juarez, K. M. (2008). *Mamíferos de médio e grande porte nas Unidades de Conservação do Distrito Federal* Large- and medium-sized mammals in Conservation Units of the Federal District. PhD Dissertation. Universidade de Brasília, Brasília, Brazil.
- Klink, C. A., & Machado, R. B. (2005). Conservation of the Brazilian Cerrado. *Conservation Biology*, 19, 707–713.
- Krausman, P. R., Harris, L. K., Haas, S. K., Koenen, K. K. G., Devers, P., Bunting, D., & Barb, M. (2005). Sonoran pronghorn habitat use on landscapes disturbed by military activities. *Wildlife Society Bulletin*, 33, 16–23.
- Lacerda, A. C. R., Tomas, W. M., & Marinho-Filho, J. (2009). Domestic dogs as an edge effect in the Brasília National Park,

- Brazil, interactions with native mammals. *Animal Conservation*, 12, 477–487.
- Lawrence, M. J., Zolderdo, A. J., Struthers, D. P., & Cooke, S. J. (2015). The effects of modern war and military activities on biodiversity and the environment. *Environment Reviews*, 23, 443–460.
- Lessa, L. G., Alves, H., Lena, G., & Barreto, R. M. F. (2012). Mammals of medium and large size in a fragmented Cerrado landscape in northeastern Minas Gerais state, Brazil. *Checklist*, 8, 192–196.
- Lindenmayer, D. B., MacGregor, C., Wood, J., Westgate, M. J., Ikin, K., Foster, C., ... Zentelis, R. (2016). Bombs, fire and biodiversity: Vertebrate fauna occurrence in areas subject to military training. *Biological Conservation*, 204, 276–283.
- Lucena, M. de F. A. (2009). Flora da Mata do CIMNC/ Flora of the Forest of CIMNC, Pernambuco, Brasil. Relatório Técnico. Centro de Pesquisas Ambientais do Nordeste, Recife, PE.
- Marinho-Filho, J., & Medri, I. M. (2008). *Priodontes maximus* (Kerr, 1792). In: A. B. M. Machado, G. M. Drummond, & A. P. Paglia (Eds.). *Livro Vermelho da fauna brasileira ameaçada de extinção* (pp. 707–709). Brasília, Brazil: Ministério do Meio Ambiente.
- Marinho-Filho, J., Rodrigues, F. H. G., & Juarez, K. M. (2002). The cerrado mammals, diversity, ecology, and natural history. In: P. S. Oliveira, & R. J. Marquis (Eds.). *The Cerrados of Brazil—Ecology and Natural History of a Neotropical Savanna*, New York, NY (pp. 267–284). New York, NY: Columbia University Press.
- Morato, R. G., Beisiegel, B. M., Ramalho, E. E., Campos, C. B., De, & Boulhosa, R. L. P. (2013). Avaliação do risco de extinção da onça-pintada *Panthera onca* (Linnaeus, 1758) no Brasil [Evaluation of the extinction risk of jaguar *Panthera onca* (Linnaeus, 1758) in Brazil]. *Biodiversidade Brasileira*, 3, 122–132.
- Moraes, E. A. Jr (2012). The status of the jaguar in the Cerrado. *Cat News Special Issue*, 7, 25–28.
- Moreira, J. C., Manduca, E. G., Gonçalves, P. R., Stumpp, R., Pinto, C. G. C., & Lessa, G. (2008). Mammals, Volta Grande Environmental Unity, Triângulo Mineiro, states of Minas Gerais and São Paulo, Southeastern Brazil. *Checklist*, 4, 349–357.
- Myers, N., Mittermeier, R. A., Mittermeier, C. G., Fonseca, G. A. B., & Kent, J. (2000). Biodiversity hotspots for conservation priorities. *Nature*, 403, 853–858.
- Nepstad, D., Schwartzman, S., Bamberger, B., Santilli, M., Ray, D., Schlesinger, P., ... Rolla, A. (2006). Inhibition of Amazon deforestation and fire by parks and indigenous reserves. *Conservation Biology*, 20, 65–73.
- Noss, R. (1993). A regional landscape approach to maintain diversity. *BioScience*, 33, 700–706.
- Oliveira-Santos, L. G., Dorazio, R. M., Tomas, W. M., Mourão, G., & Fernandez, F. A. S. (2011). No evidence of interference competition among the invasive feral pig and two native peccary species in a Neotropical wetland. *Journal of Tropical Ecology*, 27, 557–561.
- Paes, R. C. S., Ribeiro, O. C., Carneiro Monteiro, L. A. R., Figueiredo, A. O., Neto, A. A. C., Oliveira, J. M., ... Herrera, H. M. (2009). Enfermidades de Ocorrência no Porco Monteiro (*Sus scrofa*) no Pantanal Sul-Mato-Grossense, Brasil [Diseases of occurrence in wild pigs (*Sus scrofa*) no Pantanal Sul-Matogrossense, Brazil]. *Suiform Soundings*, 9, 29–34.
- Paglia, A. P., Fonseca, G. A. B. da, Rylands, A. B., Herrmann, G., Aguiar, L. M. S., Chiarello, A. G., ... Patton, J. L. (2012). Lista Anotada dos Mamíferos do Brasil / Annotated Checklist of Brazilian Mammals. 2ª Edição / 2nd Edition. *Occasional Papers in Conservation Biology*, No. 6. Arlington, VA: Conservation International.
- Pereira, G. A., Araújo, H. F. P., & Azevedo-Júnior, S. M. (2016). Distribution and conservation of three important bird groups of the Atlantic Forest in north-east Brazil. *Brazilian Journal of Biology*, 76, 1004–1020. Retrieved from <https://dx.doi.org/10.1590/1519-6984.06815>.
- Quist, M. C., Fay, P. A., Guy, C. S., Knapp, A. K., & Rubenstein, B. N. (2003). Military training effects on terrestrial and aquatic communities on a grassland military installation. *Ecological Applications*, 13, 432–442.
- Ramesh, T., & Downs, C. T. (2014). Modelling large spotted genet (*Genetta tigrina*) and slender mongoose (*Galerella sanguinea*) occupancy in a heterogeneous landscape of South Africa. *Mammalian Biology*, 79, 331–337.
- Ribeiro, M. C., Metzger, J. P., Martensen, A. C., Ponzoni, F. J., & Hirota, M. M. (2009). The Brazilian Atlantic Forest, How much is left, and how is the remaining forest distributed? Implications for conservation. *Biological Conservation*, 142, 1141–1153.
- Ribeiro, P., & Melo, F. R. (2013). Medium-large sized mammals of an agricultural area in Terezópolis (Goiás State) with sampling methods notes. *Neotropical Biology and Conservation*, 8, 68–78.
- Rocha, E. C., & Dalponte, J. C. (2006). Composition and characterization of the medium and large size mammal fauna in a small cerrado reserve in Mato Grosso, Brazil. *Revista Árvore*, 30, 669–678.
- Rocha, G. F., Ferreira, L. G., Ferreira, N. C., & Ferreira, M. E. (2011). Deforestation detection in the Cerrado biome between 2002 and 2009: patterns, trends and impacts. *Revista Brasileira de Cartografia*, 63, 341–349.
- Rodrigues, F. H. G., Silveira, L., Jácomo, A. T. A., Carmignotto, A. P., Bezerra, A. M. R., & Hass, A. (2002). Composition and characterization of the mammal fauna of Emas National Park, Goiás, Brasil. *Revista Brasileira de Zoologia*, 19, 589–600.
- Rovero, F., Martin, E., Rosa, M., Ahumada, J. A., & Spitalé, D. (2014). Estimating species richness and modelling habitat preferences of tropical forest mammals from camera trap data. *PLoS ONE*, 9(7): e103300. doi:10.1371/journal.pone.0103300.
- Sanderson, E. W., Redford, K. H., Veddler, A., Coppolillo, P. B., & Ward, S. E. (2002). A conceptual model for conservation planning based on landscape species requirements. *Landscape and Urban Planning*, 58, 41–56.
- Sano, E. E., Rosa, R., Brito, J. L. S., & Ferreira, L. G. (2010). Land cover mapping of the tropical savanna region in Brazil. *Environmental Monitoring and Assessment*, 166, 113–124.
- Siqueira Filho, J. A., & Tabarelli, M. (2006). Bromeliad species from the Atlantic forest of north-east Brazil, losses of critical populations of endemic species. *Oryx*, 40, 218–224.
- Smith, M. A., Turner, M. G., & Rusch, D. H. (2002). The effect of military training activity on eastern lupine and the Karner blue



- butterfly at Fort McCoy, Wisconsin, USA. *Environmental Management*, 29, 102–115.
- Soares-Filho, B., Moutinho, P., Nepstad, D., Anderson, A., Rodrigues, H., Garcia, R., ... Maretti, C. (2010). Role of Brazilian Amazon protected areas in climate change mitigation. *Proceedings of the National Academy of Sciences of the United States of America*, 107, 10821–10826.
- Stehmann, J. R., Forzza, R. C., Salino, A., Sobral, M., Costa, D. P. da, & Kamino, L. H. Y. (2009). *Plantas da Floresta Atlântica. Atlantic Forest Plants*. Rio de Janeiro, Brazil: Rio de Janeiro Botanical Garden.
- Stein, B. A., Scott, C., & Benton, N. (2008). Federal lands and endangered species: The role of military and other federal lands in sustaining biodiversity. *Bioscience*, 58, 339–347.
- Swank, W. G., & Teer, J. G. (1989). Status of the Jaguar. *Oryx*, 23, 14–21.
- Treves, A., Mwina, P., Plumptre, A. J., & Isoke, S. (2010). Camera trapping forest-woodland wildlife of Western Uganda reveals how gregariousness biases estimates of relative abundance and distribution. *Biological Conservation*, 143, 521–528.
- Tobler, M. W., Carrillo-Percegué, S. E., Pitman, R. L., Mares, R., & Powell, G. (2008). Further notes on the analysis of mammal inventory data collected with camera traps. *Animal Conservation*, 11, 187–189.
- Wikramanayake, E., McKnight, M., Dinerstein, E., Joshi, A., Gurung, B., & Smith, D. (2004). Designing a conservation landscape for tigers in human-dominated environments. *Conservation Biology*, 18, 839–844.
- Woodroffe, R., & Gisberg, J. R. (1998). Edge effects and the extinction of population inside protected areas. *Science*, 280, 2126–2128.
- Zentelis, R., & Lindenmayer, D. (2015). Bombing for biodiversity—Enhancing conservation values of military training areas. *Conservation Letters*, 8, 299–305.