

Vertical Distribution and Seasonality of Predatory Wasps (Hymenoptera: Vespidae) in a Temperate Deciduous Forest

Authors: Ulyshen, Michael D., Soon, Villu, and Hanula, James L.

Source: Florida Entomologist, 94(4) : 1068-1070

Published By: Florida Entomological Society

URL: <https://doi.org/10.1653/024.094.0450>

The BioOne Digital Library (<https://bioone.org/>) provides worldwide distribution for more than 580 journals and eBooks from BioOne's community of over 150 nonprofit societies, research institutions, and university presses in the biological, ecological, and environmental sciences. The BioOne Digital Library encompasses the flagship aggregation BioOne Complete (<https://bioone.org/subscribe>), the BioOne Complete Archive (<https://bioone.org/archive>), and the BioOne eBooks program offerings ESA eBook Collection (<https://bioone.org/esa-ebooks>) and CSIRO Publishing BioSelect Collection (<https://bioone.org/csiro-ebooks>).

Your use of this PDF, the BioOne Digital Library, and all posted and associated content indicates your acceptance of BioOne's Terms of Use, available at www.bioone.org/terms-of-use.

Usage of BioOne Digital Library content is strictly limited to personal, educational, and non-commercial use. Commercial inquiries or rights and permissions requests should be directed to the individual publisher as copyright holder.

BioOne is an innovative nonprofit that sees sustainable scholarly publishing as an inherently collaborative enterprise connecting authors, nonprofit publishers, academic institutions, research libraries, and research funders in the common goal of maximizing access to critical research.

VERTICAL DISTRIBUTION AND SEASONALITY OF PREDATORY WASPS (HYMENOPTERA: VESPIDAE) IN A TEMPERATE DECIDUOUS FOREST

MICHAEL D. ULYSHEN^{1*}, VILLU SOON² AND JAMES L. HANULA³

¹USDA Forest Service, Southern Research Station, Starkville, MS, USA

²Department of Zoology, Institute of Ecology and Earth Sciences, University of Tartu, Estonia

³USDA Forest Service, Southern Research Station, Athens, GA, USA

*Corresponding author; E-mail: mulyshen@fs.fed.us

Efforts to investigate the vertical dimension of forests continue to refine our thinking on issues of biodiversity and ecology. Arthropod communities exhibit a high degree of vertical stratification in forests worldwide but the vertical distribution patterns of most taxa remain largely unexplored or poorly understood. For example, only 2 studies provide information on the vertical distribution patterns of predatory wasps in temperate deciduous forests. In Canada, Vance et al. (2007) found Sphecidae to be more abundant in flight intercept traps suspended 18 m or more above the ground than in traps suspended near ground level. Similarly, in Germany, Sobek et al. (2009) found Sphecidae and Vespidae (Eumeninae) to produce more brood cells in artificial cavities placed in tree crowns than in those placed near the forest floor.

Nothing is currently known about how social predatory wasps in the subfamilies Vespinae and Polistinae are distributed within forest canopies. This is unfortunate considering the ecological significance of these large and highly mobile insects. For instance, social vespids represent one of the principal mortality factors for caterpillars in many habitats (Morris 1972; Steward et al. 1988; Lichtenberg & Lichtenberg 2003). In an Arkansas forest, for example, Steward et al. (1988) found *Vespula maculifrons* (Buysson) and *V. squamosa* (Drury) to be the most important predators of *Heliothis virescens* (Fabricius) larvae, removing over 90% of those placed 1.8-2.5 m above the ground. Similarly, *Polistes fuscatus* Fabricius and *P. dominulus* Christ removed 77-99% of *Hemileuca lucina* Hy. Edwards placed in a Massachusetts garden (Stamp & Bowers 1988). This intense predation pressure is known to have immediate effects on caterpillar behavior (Stamp & Bowers 1988) and may select for certain life history traits as well. For example, by preferentially preying upon caterpillars with a wide host range (presumably because they are more palatable), vespids may act to increase host-plant specificity over evolutionary time (Richter 2000, and references therein).

The objectives of this paper are to 1) present results on the vertical distribution and seasonality of Vespidae from a southeastern U.S. temperate deciduous forest and 2) propose that these

predators may influence voltinism (number of generations) in some lepidopteran species.

Vespidae were sampled at two heights as part of a larger study on the vertical distribution of insects in a temperate deciduous forest. Detailed methodology and results for beetles and bees can be found in Ulyshen & Hanula (2007) and Ulyshen et al. (2010), respectively. Briefly, 12 dominant overstory trees were selected in a mature bottomland forest within the Oconee National Forest in Oglethorpe County, Georgia. Each tree had 1 flight intercept trap suspended in the canopy (≥ 15 m) and one suspended near ground level (0.5 m). The traps, consisting of intersecting clear plastic vanes attached to white buckets, were operated continuously for most of the growing season, from 5 Apr to 28 Jun and from 12 Jul to 4 Oct 2005. Samples were collected every 2 weeks.

In total, 522 vespids were collected representing 8 species (Table 1). *Vespula maculifrons* (Buysson) dominated the samples (83%) followed by *Dolichovespula maculata* (Linnaeus) (8%) and *Vespula squamosa* (Drury) (4%). Almost all specimens (99%) were captured in the upper traps. Vespid abundance increased dramatically in mid season, peaking in late Jul and early Aug (Fig. 1).

These results show that vespids, including the ground-nesting *Vespula*, are much more active in the canopy than near the ground. These patterns likely reflect the greater availability of prey (especially caterpillars) and carbohydrate sources such as honeydew and sap in the canopy, although the availability of plant fibers, water and nesting locations may also be important (Richter 2000; Vance et al. 2007; Sobek et al. 2009; Ulyshen 2011). In addition, some vespids are known to circle high above feeding sites when returning to their nests, presumably for orientation purposes (Richter 2000).

The striking mid-season increase in vespid abundance (Fig. 1), an observation consistent with previous studies (Spradbery 1971; MacDonald & Matthews 1981), is particularly interesting. Considering this seasonal pattern and the extremely high predation rates documented elsewhere (Steward et al. 1988; Stamp & Bowers 1988), we speculate that vespids may play a pre-

TABLE 1. LIFE HISTORY INFORMATION AND MEAN ± SE (n = 12) ABUNDANCE OF VESPID SPECIES CAPTURED IN FLIGHT INTERCEPT TRAPS SUSPENDED IN THE CROWNS (≥15 M) OR NEAR THE BASES (0.5 M) OF TREES IN A TEMPERATE DECIDUOUS FOREST.

Species	Sociality	Nest location	Nest materials	≥15 m	0.5 m
<i>Dolichovespula maculata</i> (Linnaeus)	social	vegetation	pulp	3.58 ± 1.64	0.08 ± 0.08
<i>Eumenes fraternus</i> Say	solitary	vegetation	mud	0.08 ± 0.08	0
<i>Polistes annularis</i> (L.)	social	vegetation	pulp	0.83 ± 0.41	0
<i>Polistes metricus</i> Say	social	vegetation	pulp	0.58 ± 0.29	0
<i>Pseudodynerus quadrisectus</i> (Say)	solitary	in wood	mud	0.33 ± 0.19	0.08 ± 0.08
<i>Vespula maculifrons</i> (Buysson)	social	underground	pulp	35.92 ± 11.35	0.25 ± 0.25
<i>Vespula squamosa</i> (Drury)	social	underground	pulp	1.58 ± 0.61	0
<i>Zethus spinipes</i> Say	solitary	uncertain	uncertain	0.17 ± 0.11	0
Total				43.08 ± 11.96	0.42 ± 0.26

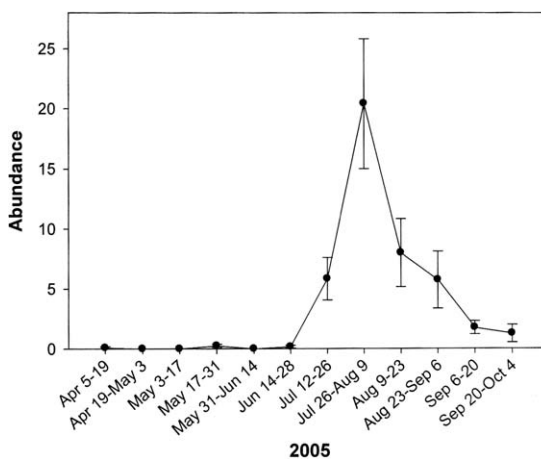


Fig. 1. Mean ± SE (n = 12) number of vespid wasps captured at twelve locations (canopy and ground traps combined) in a temperate deciduous forest.

viously unrecognized role in determining voltinism (i.e., the number of generations) in Lepidoptera. Many lepidopteran species in temperate deciduous forests are univoltine, producing only a single generation a year and focusing their larval feeding activities on early spring foliage. This pattern has traditionally been attributed to the well-documented seasonal decline in host-plant quality (Schaefer 1991). For some species, however, it could also represent a response to the coincident increase in vespid predation pressure.

We further speculate that caterpillars exposed to these high mid-seasonal wasp populations may exhibit a greater incidence of defensive behaviors or morphological characteristics than univoltine species or early-season conspecifics. This might include nighttime foraging (Fitzgerald et al. 1988), sequestration of host defense compounds (Camara 1997) or spines (Murphy et al. 2010). Future research addressing these questions would be of considerable interest.

SUMMARY

Flight intercept traps suspended in the crowns (≥15 m) and near the bases (0.5 m) of 12 trees in a temperate deciduous forest yielded 522 vespid wasps. The most common species were *Vespula maculifrons* (Buysson), *Dolichovespula maculata* (Linnaeus) and *Vespula squamosa* (Drury). Almost all specimens (99%) were captured in the upper traps. Vespid abundance increased dramatically in mid season, peaking in late Jul and early Aug. The possible importance of these predators in determining lepidopteran voltinism is discussed.

REFERENCES CITED

- CAMARA, M. D. 1997. Predator responses to sequestered plan toxins in buckeye caterpillars: Are tritrophic interactions locally variable? *J. Chem. Ecol.* 23: 2093-2106.
- FITZGERALD, T. D., CASEY, T., AND JOOS, B. 1988. Daily foraging schedule of field colonies of the eastern tent caterpillar *Malacosoma americanum*. *Oecologia* 76: 574-578.
- LICHTENBERG, J. S., AND LICHTENBERG, D. A. 2003. Predation of caterpillars on understory saplings in an Ozark forest. *Southeastern Naturalist* 2: 423-432.
- MACDONALD, J. F., AND MATTHEWS, R. W. 1981. Nesting biology of the eastern yellowjacket, *Vespula maculifrons* (Hymenoptera: Vespidae). *J. Kansas Entomol. Soc.* 54: 433-457.
- MORRIS, R. F. 1972. Predation by wasps, birds, and mammals on *Hyphantrea cunea*. *Can. Entomol.* 104: 1581-1591.
- MURPHY, S. M., LEAHY, S. M., WILLIAMS, L. S., AND LILL, J. T. 2010. Stinging spines protect slug caterpillars (Limacodidae) from multiple generalist predators. *Behav. Ecol.* 21: 153-160.
- RICHTER, M. R. 2000. Social wasp (Hymenoptera: Vespidae) foraging behavior. *Annu. Rev. Entomol.* 45: 121-150.
- RÖHRIG AND B. ULRICH [eds.], *Temperate deciduous forests. Ecosystems of the world 7*. Elsevier, New York.
- SCHAEFER, M. 1991. The animal community: Diversity and resources, pp. 51-120 *In* E. Röhrig and B. Ulrich [eds.], *Temperate deciduous forests. Ecosystems of the world, 7*. Elsevier, New York.
- SOBEK, S., TSCHARNTKE, T., SCHERBER, C., SCHIELE, AND STEFFAN-DEWENTER, I. 2009. Canopy vs. understory: does tree diversity affect bee and wasp communities and their natural enemies across forest strata? *Forest Ecol. Manag.* 258: 609-615.
- SPRADBERY, J. P. 1971. Seasonal changes in the population structure of wasp colonies (Hymenoptera: Vespidae). *J. Animal Ecol.* 40: 501-523.
- STAMP, N. E., AND BOWERS, M. D. 1988. Direct and indirect effects of predatory wasps (*Polistes* sp.: Vespidae) on gregarious caterpillars (*Hemileuca lucina*: Saturniidae). *Oecologia* 75: 619-624.
- STEWART, V. B., SMITH, K. G., AND STEPHEN, F. M. 1988. Predation by wasps on lepidopteran larvae in an Ozark forest canopy. *Ecological Entomol.* 13: 81-86.
- ULYSHEN, M. D. 2011. Arthropod vertical stratification in temperate deciduous forests: Implications for conservation-oriented management. *Forest Ecol. Manag.* 261: 1479-1489.
- ULYSHEN, M. D., V. SOON, AND HANULA, J. L. 2010. On the Vertical Distribution of Bees in a Temperate Deciduous Forest. *Insect Conservation and Diversity* 3: 222-228.
- ULYSHEN, M. D., AND HANULA, J. L. 2007. A comparison of the beetle (Coleoptera) fauna captured at two heights above the ground in a North American temperate deciduous forest. *Am. Midl. Nat.* 158: 260-278.
- VANCE, C. C., SMITH, S. M., MALCOLM, J. R., HUBER, J., AND BELLOCQ, M. I. 2007. Differences between forest type and vertical strata in the diversity and composition of hymenopteran families and mymarid genera in northeastern temperate forests. *Environ. Entomol.* 36: 1073-1083.