

## **Diospyros digyna (Ebenaceae): A New Host Record for Bephratelloides ablusus (Hymenoptera: Eurytomidae) in Mexico**

Authors: Castañeda-Vildózola, Alvaro, Nava-Díaz, Cristian, Franco-Mora, Omar, Lomeli-Flores, José Refugio, and Peña, Jorge E.

Source: Florida Entomologist, 94(4) : 1071-1072

Published By: Florida Entomological Society

URL: <https://doi.org/10.1653/024.094.0451>

---

The BioOne Digital Library (<https://bioone.org/>) provides worldwide distribution for more than 580 journals and eBooks from BioOne's community of over 150 nonprofit societies, research institutions, and university presses in the biological, ecological, and environmental sciences. The BioOne Digital Library encompasses the flagship aggregation BioOne Complete (<https://bioone.org/subscribe>), the BioOne Complete Archive (<https://bioone.org/archive>), and the BioOne eBooks program offerings ESA eBook Collection (<https://bioone.org/esa-ebooks>) and CSIRO Publishing BioSelect Collection (<https://bioone.org/csiro-ebooks>).

Your use of this PDF, the BioOne Digital Library, and all posted and associated content indicates your acceptance of BioOne's Terms of Use, available at [www.bioone.org/terms-of-use](http://www.bioone.org/terms-of-use).

Usage of BioOne Digital Library content is strictly limited to personal, educational, and non-commercial use. Commercial inquiries or rights and permissions requests should be directed to the individual publisher as copyright holder.

---

BioOne is an innovative nonprofit that sees sustainable scholarly publishing as an inherently collaborative enterprise connecting authors, nonprofit publishers, academic institutions, research libraries, and research funders in the common goal of maximizing access to critical research.

## *DIOSPYROS DIGYNA* (EBENACEAE): A NEW HOST RECORD FOR *BEPHRATELLOIDES ABLUSUS* (HYMENOPTERA: EURYTOMIDAE) IN MEXICO

ALVARO CASTAÑEDA-VILDÓZOLA<sup>1</sup>, CRISTIAN NAVA-DÍAZ<sup>2</sup>, OMAR FRANCO-MORA<sup>1</sup>, JOSÉ REFUGIO LOMELI-FLORES<sup>2</sup>,  
AND JORGE E. PEÑA<sup>3</sup>

<sup>1</sup>Centro de Investigación y Estudios Avanzados en Fitomejoramiento, Facultad de Ciencias Agrícolas, Universidad Autónoma del Estado de México, Campus El Cerrillo, Toluca, Estado de México, C.P. 50200, México, [acastanedav@uaemex.mx](mailto:acastanedav@uaemex.mx)

<sup>2</sup>Colegio de Posgraduados, Campus Montecillo. Km 36.5 Carretera México-Texcoco, 56230 Montecillo, Texcoco, Estado de México, México

<sup>3</sup>University of Florida, Entomology and Nematology Department, Tropical Research and Education Center, 18905 SW 280th Street, Homestead, FL 33031

The genus *Bephratelloides* Girault (Hymenoptera: Eurytomidae) is composed of 7 species widely distributed in the neotropics (Grissell & Schauff 1990; Grissell & Foster 1996; Chang 1998). Four species, *B. pomorum* (F.), *B. cubensis* (Ashmead), *B. paraguayensis* (Crawford) and *B. petiolatus* Grissell & Schauff, develop strictly in seeds of *Annona* (Magnoliales: Annonaceae) (i.e., *Annona muricata* L., *A. cherimola* Mill., *A. squamosa* L., *A. diversifolia* Saff., *A. reticulata* L. and *A. squamosa* × *A. cherimola*) (Nadel & Peña 1991; Castañeda-Vildózola et al. 2010). *Bephratelloides* are considered to be the main pest of *Annona* spp. in Florida (USA), Mexico and Brazil (Peña & Bennett 1995; Moura et al. 2006; Hernández-Fuentes et al. 2007).

While most *Bephratelloides* develop in *Annona* spp., *B. ablusus* and *B. duguetiphagus* develop in the seeds of *Cymbopetalum mayanum* Lundell and *Duguetia panamensis* Standl. respectively, both Annonaceae (Grissell & Foster 1996; Chang 1998). These records contradict the hypothesis that *Bephratelloides* spp. was restricted to *Annona* (Grissell & Foster 1996; Chang 1998).

*Bephratelloides ablusus* Grissell & Foster and *B. cubensis* have been recorded in Mexico (Grissell & Foster 1996; Castañeda-Vildózola et al. 2010). *B. ablusus* develop on the seed of *C. mayanum* (Magnoliales: Annonaceae) in Chiapas state, a region close to Central America. This fruit has no commercial value, but is considered a main food source of migratory birds and it may be an alternative host of other species of *Bephratelloides* (Grissell & Foster 1996).

During a technical visit to Tepalcingo, Morelos, México (18°35'N, 98°50'W, 1169 meters above sea level) on 3 Nov 2007, we observed that black sapote (*Diospyros digyna* Jacq.) (Ericales: Ebenaceae) fruits had similar symptoms to those observed in *Annona* fruits damaged by *B. cubensis*. Black sapote, a fruit species native of Mexico and Central America, produces a berry that measures from 5 to 12.5 cm in diam, which has a persistent and prominent calyx (Morton 1987). A hundred

black sapote fruits were examined, and 8 fruits showed exit holes. Twenty apparently healthy fruits (around 6 cm in diam) were also collected and taken to "Laboratorio de Parasitología de la Fundación Salvador Sánchez Colín CICTAMEX, S.C" at Coatepec Harinas, México state, México. Fruits were placed individually inside plastic containers (15 × 8 cm), covered with cheese cloth and incubated at 26 ± 2 °C and 60-70% RH.

Fruits were checked on a daily basis. Six days after collection, 2 fruits showed several 1.5 mm exit holes. A total of 26 (19 females and 7 males) *Bephratelloides* emerged. Adults were collected and preserved in 70% ethanol for identification. According to our observations, 4 seeds were able to supply enough food for 26 wasps. The adult Eurytomidae were identified using the taxonomic keys of Grissell & Schauff (1990) and Grissell & Foster (1996) as *Bephratelloides ablusus* Grissell & Foster (Hymenoptera: Eurytomidae) (Figs. 1a and 1b). A detailed description of the species may be found in Grissell & Foster (1996). Specimens were deposited at the Colección Entomológica del Colegio de Posgraduados, located in Montecillo, Texcoco, México.

This is the first report of *B. ablusus* on *Diospyros digyna* (Ericales: Ebenaceae) in Mexico, and provides a new host record for the genus *Bephratelloides* outside Magnoliales (Annonaceae). This report extends our knowledge of the host range of the genus *Bephratelloides*.

We express deep thanks to Jorge Valdez-Carrasco M.Sc. for taking the photographs, and to Ing. Pedro Mijares-Oviedo, technical secretary of Fundación Salvador Sánchez Colín CICTAMEX, S.C. for his help and advice to develop this research.

### SUMMARY

Black sapote *Diospyros digyna* Jacq. (Ericales: Ebenaceae) is recorded as a new host of *Bephratelloides ablusus* Grissell & Foster (Hymenoptera: Eurytomidae). This pest has been found in Mex-

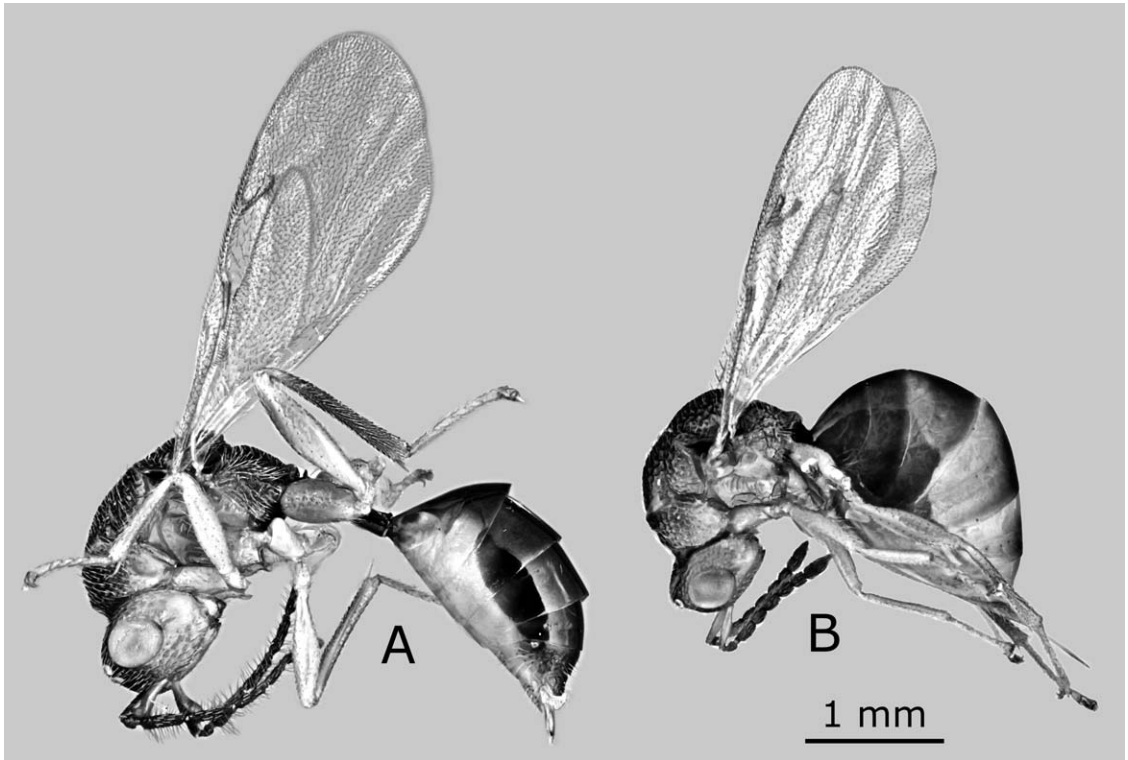


Fig. 1. *Bephratelloides ablusus*, habitus of adult in lateral view (A) Male; (B) Female.

ico, and is generally associated with *Annona* (Magnoliales: Annonaceae). We present evidence that supports the hypothesis that *Bephratelloides* spp. has host species outside the Annonaceae.

#### REFERENCES CITED

- CASTAÑEDA-VILDÓZOLA, A., NAVA DÍAZ, C., VALDEZ-CARRASCO, J., RUIZ-MONTEIEL, C., VIDAL-HERNANDEZ, L., AND BARRIOS-MATIAS, S. 2010. Distribution and host range of *Bephratelloides cubensis* Ashmead (Hymenoptera: Eurytomidae) in México. *Neotrop. Entomol.* 39(6): 1053-1055.
- NADEL, H., AND PEÑA, J. 1991. Hosts of *Bephratelloides cubensis* (Hymenoptera: Eurytomidae) in Florida. *Florida Entomol.* 74(3): 476-479.
- GRISSELL, E. E., AND FOSTER, M. S. 1996. A new *Bephratelloides* (Hymenoptera: Eurytomidae) from seeds of *Cymbopetalum* (Annonaceae) in Mexico. *Proc. Entomol. Soc. Washington.* 98(2): 256-263.
- GRISSELL, E. E., AND SCHAUFF, M. E. 1990. A synopsis of the seed-feeding genus *Bephratelloides* (Chalcidoidea: Eurytomidae). *Proc. Entomol. Soc. Washington* 92(2): 177-187.
- HERNÁNDEZ-FUENTES, L. M., BAUTISTA-MARTÍNEZ, N., CARRILLO-SÁNCHEZ, J. L., SÁNCHEZ-ARROYO, H., URÍAS LÓPEZ, M. A., AND SALAS-ARAIZA, D. 2008. Control del barrenador de las semillas, *Bephratelloides cubensis* Ashmead (Hymenoptera: Eurytomidae) en guanábana, *Annona muricata* L. (Annonales: Annonaceae). *Acta Zool. Mexicana* 24(1): 199-206.
- PEÑA, J. E., AND BENNETT, F. D. 1995. Arthropods associated with *Annona* spp. in the neotropics. *Florida Entomol.* 78(2): 329-349.
- CHANG, P. R. A. 1998. Descripción de *Bephratelloides duguetiphagus* n. sp. (Hymenoptera: Eurytomidae) criados de frutos de *Duguetia panamensis* Standl. (Annonaceae). M. Sc. Dissertation, Universidad de Panamá, Panamá, República de Panamá.
- MORTON, J. F. 1987. Black Sapote, pp. 416-418 *In* Fruits of warm climates. Julia F. Morton, Miami, Florida.
- MOURA, J. I. L., SGRILLO, R. B., SGRILLO, K. R. P. A., VILELA, E. F., AND BENTO, J. M. S. 2006. Uso de fêmeas virgens na coleta massal de *Bephratelloides pomorum* (Fab.) (Hymenoptera: Eurytomidae) em *Annona muricata* L. (Annonaceae). *Manejo Integrado de Plagas y Agroecología* 77: 78-81.