

The Immature Stages and Shelter Building Behavior of Falgo Jeconia OmbraEvans, 1955 in eastern Ecuador (Lepidoptera: HesperIIDae: HesperIinae)

Authors: Greeney, Harold F., and Warren, Andrew D.

Source: Journal of Insect Science, 9(33) : 1-10

Published By: Entomological Society of America

URL: <https://doi.org/10.1673/031.009.3301>

BioOne Complete (complete.BioOne.org) is a full-text database of 200 subscribed and open-access titles in the biological, ecological, and environmental sciences published by nonprofit societies, associations, museums, institutions, and presses.

Your use of this PDF, the BioOne Complete website, and all posted and associated content indicates your acceptance of BioOne's Terms of Use, available at www.bioone.org/terms-of-use.

Usage of BioOne Complete content is strictly limited to personal, educational, and non - commercial use. Commercial inquiries or rights and permissions requests should be directed to the individual publisher as copyright holder.

BioOne sees sustainable scholarly publishing as an inherently collaborative enterprise connecting authors, nonprofit publishers, academic institutions, research libraries, and research funders in the common goal of maximizing access to critical research.



The immature stages and shelter building behavior of *Falga jeconia ombra* Evans, 1955 in eastern Ecuador (Lepidoptera: HesperIIDae: HesperIIDinae)

Harold F. Greeney^{1,a} and Andrew D. Warren^{2,b}

¹ Yanayacu Biological Station & Center for Creative Studies, Cosanga, Ecuador c/o 721 Foch y Amazonas, Quito, Ecuador

² McGuire Center for Lepidoptera and Biodiversity, Florida Museum of Natural History, University of Florida, P.O. Box 112710, Gainesville, Florida 32611

² Museo de Zoología, Facultad de Ciencias, Universidad Nacional Autónoma de México, Apdo. Postal 70-399, México, D.F. 04510 México

Abstract

We describe the immature stages and shelter building behavior of *Falga jeconia ombra* Evans, 1955 from eastern Ecuador. *Chusquea scandens* (Poaceae, Bambusoidea) is the larval food plant. Larvae in all stadia build shelters and forcibly eject frass with the aid of an anal comb. Later instars possess an eversible prothoracic “neck” gland. Larvae are associated with moving water.

Keywords: skipper, bamboo, Poaceae, *Chusquea*, cloud forest, Andes

Correspondence: ^arevmoss@yahoo.com, ^bandy@butterfliesofamerica.com

Received: 18 March 2008 | **Accepted:** 20 June 2008 | **Published:** 2 June 2009

Associate Editor: Jim Miller was editor for this paper

Copyright: This is an open access paper. We use the Creative Commons Attribution 3.0 license that permits unrestricted use, provided that the paper is properly attributed.

ISSN: 1536-2442 | Volume 9, Number 33

Cite this paper as:

Greeney HF, Warren AD. 2009. The immature stages and shelter building behavior of *Falga jeconia ombra* Evans, 1955 in eastern Ecuador (Lepidoptera: HesperIIDae: HesperIIDinae). 10pp. *Journal of Insect Science* 9:33, available online: insectscience.org/9.33

Introduction

After a long period of neglect since the early work of Moss (1949), the immature biology of Neotropical skipper (Hesperiidae) has been the subject of renewed interest (e.g. Cock 1991, 1996, 1998, 2000, 2001, 2003; Young 1991, 1994; Burns and Janzen 1999, 2001; Greeney and Warren 2003, 2004). In an effort to continue this trend and to contribute to our knowledge of the ecology of poorly known skipper taxa, we present notes on the life history and shelter building behavior of *F. jeconia ombra* Evans, 1955, a member of the rarely encountered Neotropical genus *Falga* Mabille, 1897.

Mabille (1897: 211) described *Falga* to include a single species, *Carystus jeconia* Butler, 1870 (race *mirabilis* Staudinger *in litt.*), from Bolivia. In the most recent review of *Falga* (Evans 1955: 47–49), there were four included species: *scrias* Godman, 1901, *jeconia* (which itself included five subspecies), *farina* Evans, 1955 and *theoclea* (Hewitson, 1870). *Falga scrias*, described from Honduras, was later reported from Costa Rica (one female) and Mexico (one male) (Evans 1955); no further information on its distribution or biology is available. *Falga farina* was described by Evans (1955: 49) based on two males from Cochabamba, Bolivia; no other details on its distribution or biology are known. *Falga theoclea*, described from Ecuador, was known to Evans from six males and one female (Río Pastaza, Ecuador and Chanchamayo, Peru); no other information on this species is available. The final species assigned by Evans to *Falga* is *F. jeconia*, which includes five subspecies: *jacta* Evans, 1955 (four specimens from Río Titaco, Colombia), *jeconia* (five specimens from Venezuela), *ombra* Evans, 1955 (five specimens from Río Pastaza, Ecuador), *odol* Evans, 1955 (2 ♂♂ from Uruhasi, Peru), and *mirabilis* (five specimens from Bolivia). There have been no subsequent investigations into the taxonomic status of these *F. jeconia* subspecies, perhaps due to the paucity of study material. Careful study of these taxa may demonstrate that more than one valid species-level taxon is involved, since many of Evans' subspecies have been elevated to full species status upon subsequent reevaluation (e.g. Burns 1985, Steinhauser 1989, Mielke 1995, Austin and Warren 2002).

All *Falga* species are rare in collections. It was therefore remarkable to find larvae of *Falga jeconia ombra* abundant in the vicinity of the Yanayacu Biological Station (YBS) and Center for Creative Studies. Our ecological notes on this skipper, based on numerous rearings, are presented below.

Materials and Methods

We carried out all rearing and field investigations at the YBS (00°35.949 S, 77°53.403 W) located in Napo Province, in the Andes of northeastern Ecuador. The

study site is located approximately five kilometers west of the town of Cosanga and includes around 2000 hectares of primary cloud forest bordered by cattle pasture and other disturbed habitats [see Greeney et al. (2006) for a more complete description of the study area]. We collected larvae at elevations ranging from 2000 to 2200 m and reared them at the research station, which is located at 2150 m.

We made three large collections of larvae, pupae, and eggs, and located immature stages by walking along small, forested streams, carefully searching on bamboo leaves up to four meters from the edge of the stream. The first collection (12 November 2000) yielded 49 pupae, 39 fifth instars, and 11 fourth instars. On 23 October 2001, we collected 30 eggs, 29 first instars, 14 second instars, 31 third instars, 4 fourth instars and 3 pupae. The third collection (22 November 2001) produced 163 eggs, 53 first instars, 21 second instars, 8 third instars, 17 fourth instars, and 5 fifth instars. Additionally, we made field observations of all stages from September 2002 to December 2007. We removed larvae to the lab and reared them in plastic bags or glass jars, grouped by instar. When individuals molted we moved them to separate containers to determine stadia lengths. We added fresh food plant leaves as needed, and took body-length measurements for each instar on the day before molt.

We made all observations on larval shelter construction and behavior either in the field or with freshly collected larvae still in their shelters. To avoid potential artifacts resulting from a captive environment, our descriptions and discussions exclude shelters constructed in the laboratory. Terminology follows Greeney and Jones (2003). Vouchers of all life stages have been deposited in the private collections of both authors.

Results

Adult behavior

Despite the abundance of immature stages in the study area, we observed adult *Falga jeconia* on only six occasions. Five of these observations were of males guarding perches in areas of bright sun along small forest streams, between 10:00 am and 12:00 noon. Each male patrolled a series of four to five perches between 2–3 m above the ground, and periodically chased passing butterflies, as well as small flies and other flying insects. The perches within a male's territory tended to be less than 1 m apart, and males rarely flew more than 5–6 m in pursuit of passing insects. On one occasion, a male periodically fed at flowers of a species of *Erato* DC (Asteraceae) within his territory. Often, during sunny periods, individuals lowered their hind wings in the typical hesperine basking position (Figure 2k). In February 2002, we observed a female at 14:00 searching for oviposition sites along a small forest stream in bright sun. She flew rapidly from leaf to

leaf, landing most frequently on small, thin-bladed leaves, and rapidly drumming her forelegs on the leaf upper surface. We did not observe any oviposition events.

General immature biology

All of the 477 individuals of all life stages collected in this study were found directly over moving water. When this pattern became evident, we made a concerted effort to search for larvae away from streams, and in particular, directly adjacent to streams. Despite these efforts, and ongoing caterpillar searches at Yanayacu, no larvae of this species have been found away from moving water. We observed all instars forcibly ejecting frass and found no frass accumulation inside larval shelters. Although not quantified, it appeared that the frass ejection capabilities of *F. jeconia ombra* larvae are weak compared to the abilities of other skippers (Greeney pers. obs.). We reared a total of 43 fourth or fifth instars to adults, and observed no parasitism.

Egg (Figures 1a-1b)

n = 200+; approx. 1 mm diameter; development time >13 days

Egg flattened, dome-shaped, appearing smooth but with minute pitting visible under dissecting microscope, pale yellow to cream-colored (Figure 1b); eggs of a clutch generally laid in one or two loose rows (Figure 1a); upon emergence, larvae eat a hole through top of egg, consuming up to two-thirds of shell, but never entire shell (Figure 1a); 71 clutches of eggs averaged (\pm SD) 4.8 ± 2.6 eggs per clutch.

First instar (Figures 1c-1e)

n = 80+; body length = 2.0–4.8 mm; development time = 13–14 days

Head round to roundly triangular when viewed from the front, smooth, shining black to dark brown with sparse minute pitting and sparse short pale setae; body at hatching widest at A3, abdominal segments slightly projected laterally (Figure 1c, 1d); later in stadium these projections less noticeable, body more elongate (Figure 1e), nearly parallel-sided but gently tapering anteriorly, anterior abdominal segments only slightly produced laterally; body clear yellow-white with dark green viscera showing dorsally after feeding; entire body with sparse, short, pale setae; thoracic legs weakly sclerotized, same color as body; tracheoles visible beneath cuticle, forming a thin white lateral line connecting spiracles; spiracles white and slightly projecting outward into tubes with small webs of tracheoles visible beneath cuticle surrounding spiracles, giving them a pinched appearance; pronotum strongly sclerotized, dark brown, produced laterally, extending to subdorsal area (Figure 1c); anal plate weakly sclerotized and transparent, appearing wrinkled or reticulated, bearing two long, pale setae along posterior margin.

Second instar

n = 40+; body length = to 7 mm; development time = 8–10 days

Head roundly triangular when viewed from the front, smooth shiny black with fine, web-like sculpturing and sparse short pale setae; body similar to 1st instar but lacking strongly sclerotized pronotum.

Third instar

n = 40+; body length = to 11.2 mm; development time = 9–11 days

Head and body similar to 2nd instar, except setae more golden, fringe around anal plate more dense, and spiracles more prominent and produced outward.

Fourth instar (Figures 1f-1h)

n = 38+; body length to 18.1 mm; development time = 12–15 days

Similar to 3rd instar; males with a pair of dull purple, kidney to oval-shaped testes, with cream-colored markings visible through cuticle on either side of midline on A6 and A7.

Fifth instar (Figures 1i, 2a-2f)

n = 70+; body length = to 29.8 mm; development time = 24–28 days

Head cream-colored, mouth parts dark reddish brown, stemmata dark brown to black (Figures 2b-2f), some individuals with an indistinct reddish brown wash laterally from stemmata to just below the epicranial crease, this marking highly variable (Figures 1i, 2a-g), roundly rectangular (slightly taller than wide), densely pitted and sparsely covered with short, pale setae; setae slightly longer around stemmata and mouthparts; body transparent whitish, appearing frosted with dark green viscera showing through in a narrow but distinct mid-dorsal stripe from T3 to A10; intersegmental membrane wrinkled, often giving the appearance of yellowish banding; tracheoles showing as a distinct, thin, white spiracular stripe, spiracles white with a pinched appearance (see description of 1st instar); entire body sparsely covered with short, pale golden setae, longest on anal plate.

Pre-pupa (Figure 2g)

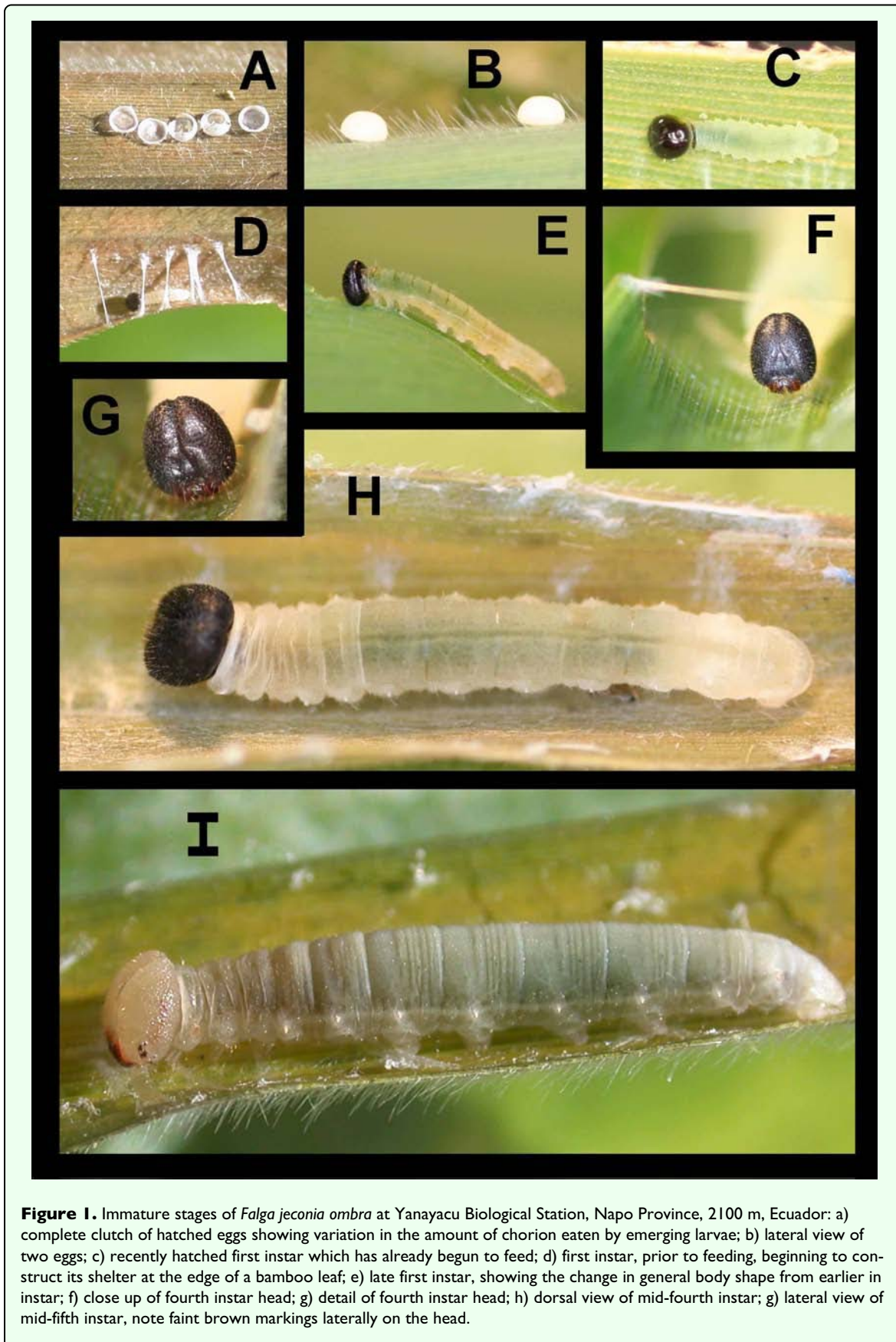
n = 80+; length = 20–25 mm; development time = 2–4 days

Body of mature fifth instar (pre-pupa) almost entirely translucent lime green.

Pupa (Figures 2h-2j)

n = 90+; length = 20.6–24.5 mm; development time = 21–28 days

Elongate, widest at A3 or A4 and tapering toward both ends; head bearing a long, thin, anteriorly-directed projection (Figure 2j); proboscis sheath free, extending to A8; entire pupa pale, translucent lime green, cremaster and head projection tinged with pink (Figure 2h), proboscis sheath black at apex; dorsum of head, thorax, abdomen



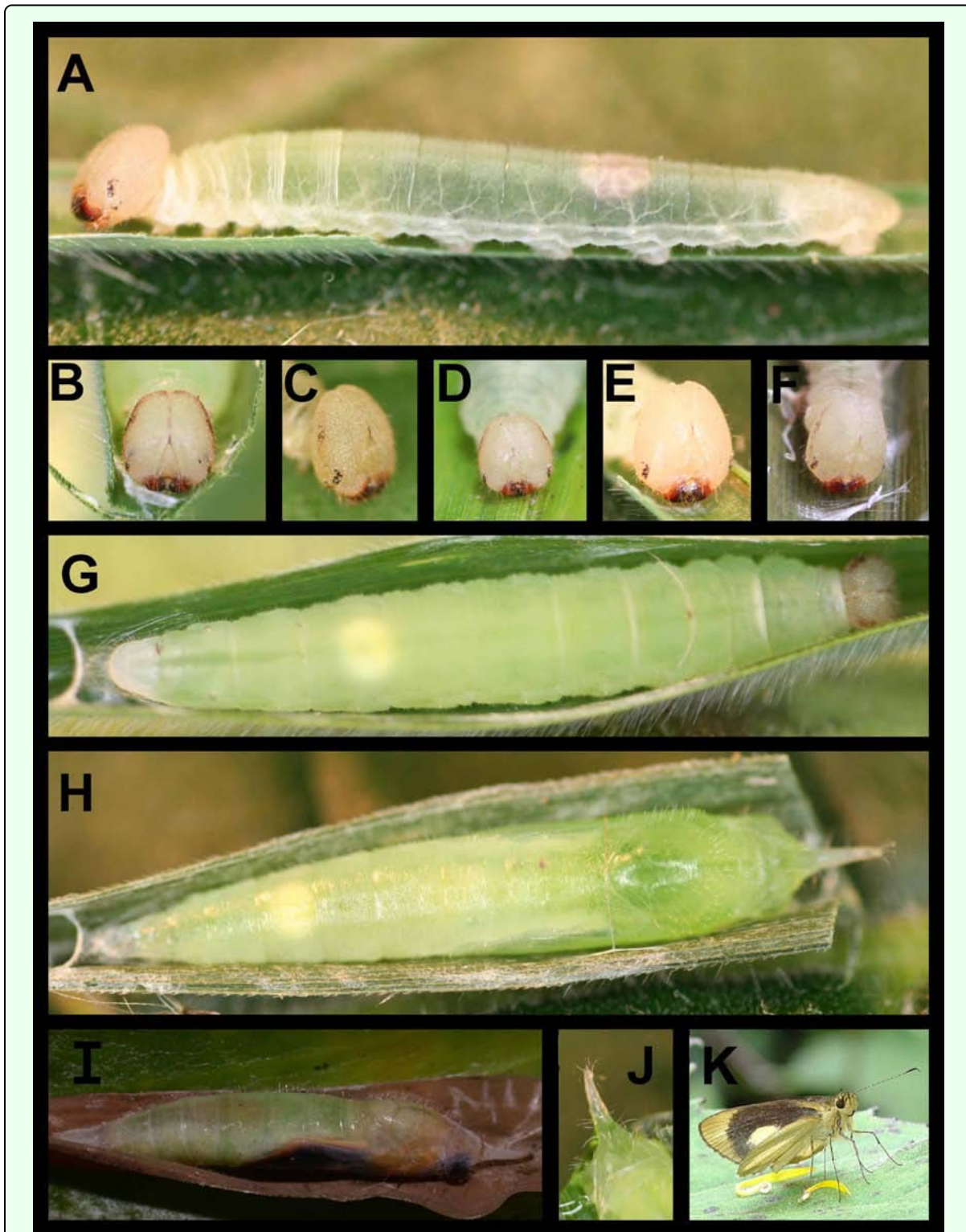


Figure 2. Immature stages of *Falga jeconia ombra* at Yanayacu Biological Station, Napo Province, 2100 m, Ecuador: a) lateral view of late fifth instar, note lack of brown lateral markings on the head; b-f) details of fifth instar head, note variation in the development of brown lateral markings; g) pre-pupa; h) dorsal view of a freshly formed pupa; i) lateral view of a pupa two days prior to adult eclosion; j) detail of anterior projection on head of pupa; k) adult male on a perch in the sun, with hind wings lowered.

and head projection bearing sparse short pale setae; silk spun prior to pupation bright white, pupa attached to a

thick band of silk tied across shelter, with a thin strand of silk across thorax; several days before eclosion eyes turn

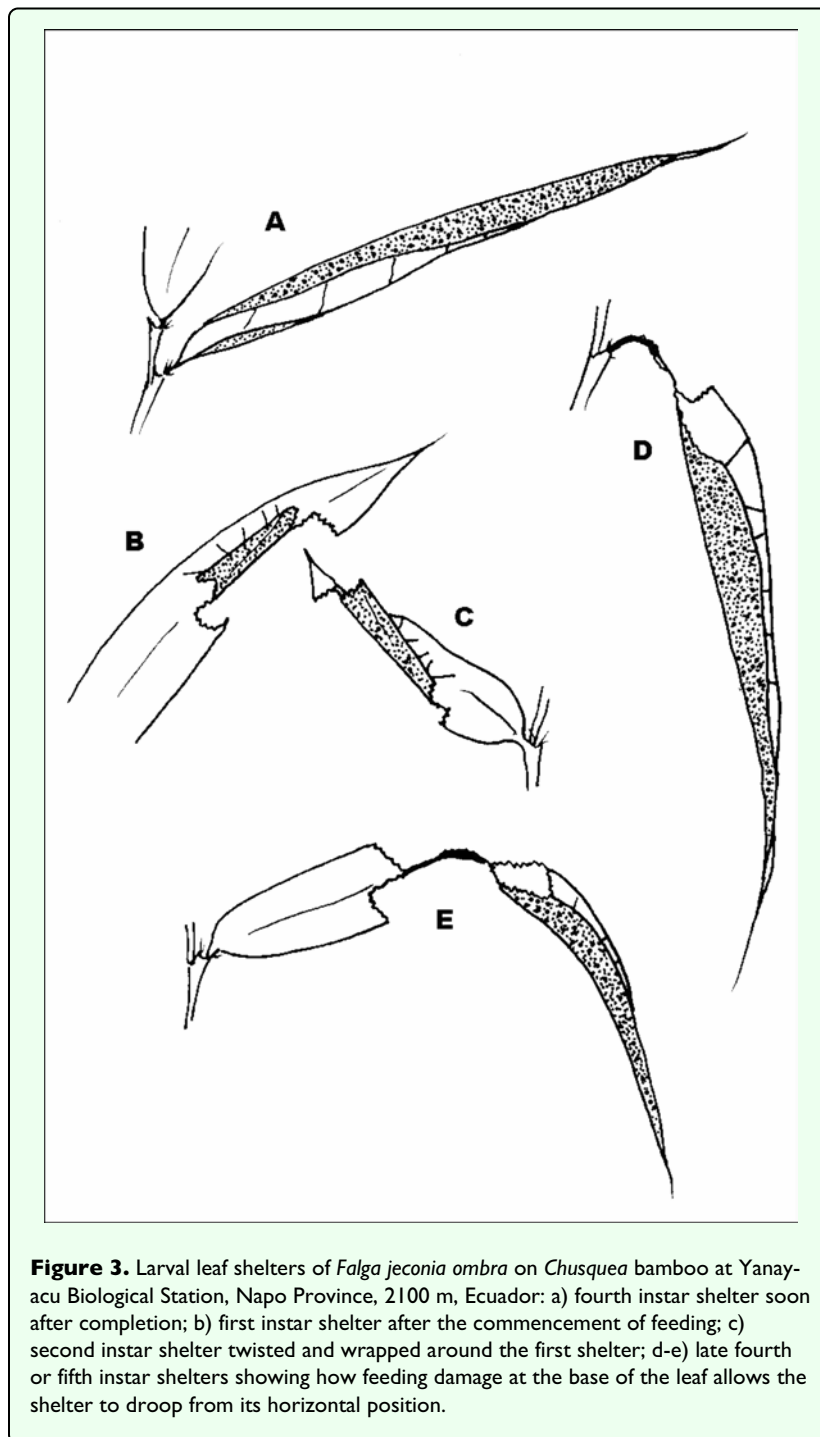


Figure 3. Larval leaf shelters of *Falga jeconia ombra* on *Chusquea* bamboo at Yanayacu Biological Station, Napo Province, 2100 m, Ecuador: a) fourth instar shelter soon after completion; b) first instar shelter after the commencement of feeding; c) second instar shelter twisted and wrapped around the first shelter; d-e) late fourth or fifth instar shelters showing how feeding damage at the base of the leaf allows the shelter to droop from its horizontal position.

dark brown, wing pads turn dark brownish orange, head and thorax become dull olive (Figure 2i).

First instar shelter (Figures 1d, 3b, 4a)
n = 400+; size = ca. 4–11 mm x 2–4 mm

First instar shelters are constructed by rolling a small portion of the leaf margin (Figure 1d) either onto the upper or lower surface of the leaf, forming a loose, tubular shelter here termed a “group I, type 2, no-cut fold shelter.” Once the shelter is complete, feeding begins above and below the shelter, and the loose tube is soon tied with silk

to form a tight pocket, open at only one end (Figures 3b, 4a). At this stage, the shelter no longer resembles its original form and, if the ontogeny of shelter construction was not known, would be mistakenly termed a “group III, type 9, two-cut unstemmed” shelter. The overall shape is roughly rectangular (Figure 3b).

Second instar shelter (Figures 3c, 4b-d, f)
n = 100+; size = ca. 15–31 mm x 5–15 mm

Immediately after or immediately prior to a molt, larvae make an addition to the first instar shelter that involves

silking more of the leaf into a tube or flattened pocket around the initial shelter. Often this produces a simple twisting of the leaf around the initial shelter (Figure 4c). Essentially, the first shelter becomes wrapped in additional leaf tissue, providing the protection of two layers of leaf tissue surrounding the larva. Larvae continue to use the first shelter (inside the second) for several days after the second is built, but as they slowly consume the first shelter, they are eventually concealed by the second only. As no additional cuts are made to create the second shelter, it would be termed a “group I, type 2, no-cut fold” shelter (Greeney and Jones 2003). Often the presence of numerous shelters on a host plant is the easiest way to find larvae (Figure 4f).

Third instar shelter

n = 30+

Early third instars were found resting in the shelter made by the second instar. Based on empty shelters found in the field, it appears that late third instars build a third shelter on a separate leaf from the previous two. These shelters are as described for fourth instars; the molt to fourth instar occurred inside them.

Fourth instar shelter (Figure 3a, d, e, 4e)

n = 30+; size = ca. 50–120 mm x 5–9 mm

Fourth instars encountered in the field build “group I, type 2, no-cut fold” shelters. These consist of an entire leaf rolled into a tube, sealed near the tip of the leaf, usually with a circular opening at the base. Leaf margins were joined with 7–10 strong silk ties, often leaving the part of the shelter at the base of the leaf partially open along the side, especially right after construction (Figures 3a, 4e). Feeding takes place near the base of the leaf while the larva remains mostly inside the shelter. Late in the fourth stadium, feeding damage causes the leaf to sag into a near vertical position as the leaf blade is removed from both sides of the midvein near the base (Figure 3d) or middle of the leaf (Figure 3e). Larvae rest with the head at the opening of the shelter, and, as there is no room to turn around in the shelter, must crawl entirely out of the shelter to eject frass. Judging from empty shelters found in the field, we suspect that some, if not all, fourth instars build a second fourth shelter identical to that described above.

Fifth instar shelter (Figures 3d, e, 4e)

n = 100+; size = ca 30–60 mm x 5–9 mm

Fifth instar shelters are similar to those described for late fourth instars. We do not know whether fifth instars normally build a final shelter, but suspect that some remain in the fourth stadium shelter and continue to eat the base of the leaf, as described for fourth instars. The larvae essentially consume their shelter from the leaf base toward the apex, and some fourth and fifth instars likely build several shelters before reaching maturity.

Pupal shelter (Figures 2g-i, 4g-h)

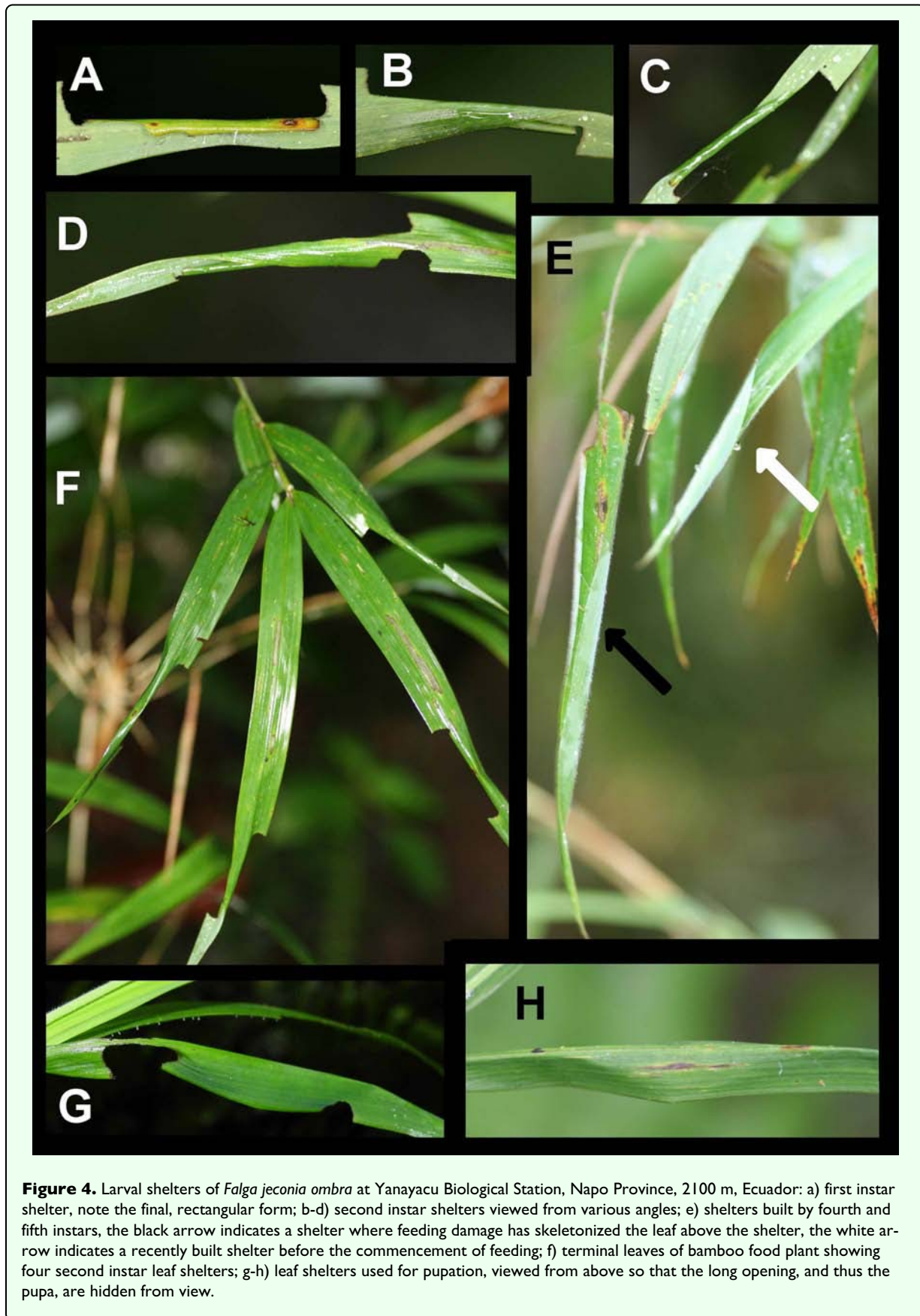
n = 60+; size = ca. 50–90 mm x 8–14 mm

Pupae were found in tented leaf shelters, formed by drawing opposite leaf margins together to form a tent, pinched tightly above and below the pupa, and open toward the underside of the leaf (Figures 4g, 4h). The shelter resembles an overturned canoe. While this shelter conceals the pupae when viewed from above, it leaves them exposed from below, most closely resembling a “group 1, type 2, no-cut fold” shelter. Usually, all feeding had ceased by the time this shelter was constructed, and the leaf was relatively unmodified (Figure 4h). Occasionally, however, larvae fed above and below the shelter, which perhaps aided in folding of the leaf (Figure 4g).

Discussion

The positioning of larvae and egg clutches directly over moving water, in combination with the weak frass-throwing ability of the larvae, suggests that moving water may be important in frass removal. Ejection of frass from the shelter, thus removing it as a potential olfactory cue, has been suggested as a means to reduce parasitism and/or predation (e.g. Weiss 2003). The potential use of moving water for frass removal, in conjunction with decreased frass-throwing ability, deserves further study.

The ontogenetic change in shelter types described here closely parallels that described for the hesperiine *Vettius coryna coryna* (Hewitson, 1866) (Greeney and Warren this issue). However, two major differences are apparent, both involving modifications of the shelter after its initial construction. The first involves the final form of the first larval shelter. In *V. coryna*, feeding damage occurs only at one end of the original leaf curl, giving the final product a roughly triangular shape. In contrast, feeding damage by *F. jeconia* occurs at both ends of the larval shelter, resulting in a roughly rectangular shape. The second difference can be seen in the final larval shelters, which again are of the same basic type but are modified differently. While both shelters hang perpendicular to the natural plane of the leaf, their positioning is accomplished in different ways. In *V. coryna*, the leaf midvein is partially cut and silk is used to bend the leaf tip downward (Greeney and Warren this issue). In *F. jeconia*, vertical positioning of the shelter is accomplished by simply weakening the leaf's structure when the leaf blade is eaten on both sides of the midvein. Different construction processes that produce convergent architectural designs have recently been noted for first instar shelters of *Epargyreus clarus* (Cramer, 1775) and *Urbanus proteus* (Linnaeus, 1758) (Greeney and Sheldon 2008). As shelter architecture for additional species become known, subtle differences such as these should be noted carefully, since they may prove to be phylogenetically informative.



The shelters built by 5th instars of both *V. coryna* and *F. jeconia* are quite similar. As noted above, this upside-down-canoe shaped shelter does not fit well into the larval shelter classification scheme of Greeney and Jones (2003) because it does not “mostly or completely hide the larva (pupa) from view.” Therefore, following the scheme developed by Greeney and Jones (2003), we call this new shelter type a “group I, inverted canoe shelter.”

As noted in the description of 1st instar shelters, their form may change slightly when modified by feeding. This may result in misinterpretation of the shelter types proposed by Greeney and Jones (2003), revealing an important flaw in their classification system. In combination with observations by the first author on additional species, this suggests that the entire process of shelter construction, in addition to the final product, is important for fully understanding shelter form. However, we feel that the system proposed by Greeney and Jones (2003) remains useful for classifying gross shelter types and for discussion of shelter form. We hope that the detailed observations presented here will encourage others to record detailed comparative observations on larval shelters. While these have traditionally been neglected in life history studies, they may ultimately provide a unique and highly useful character system for the HesperIIDae.

Acknowledgments

This study could not have been completed without the field assistance of Chris Aldassay, Jennifer Getty, and Allison Phillips. HFG thanks Ruth Ann and John V. Moore, Matt Kaplan, the Whitley Lang Foundation, and the Hertzberg Family Foundation for financial support. ADW acknowledges support from DGAPA-UNAM. This study was funded in part by grant # NSF DEB-0346729. For unprecedented help with our Neotropical natural history studies we thank the PBNHS, the C. del Agua lab, Tim Metz, Jay Peltz, and the Humboldt Crew. Anette Aiello and several anonymous reviewers greatly improved this paper with their critical comments. This is publication number 155 of the Yanayacu Natural History Research Group and is dedicated to the Reverend Miles Moss for his love of natural history.

Editor's note

Paper copies of this article will be deposited in the following libraries. Senckenberg Library, Frankfurt Germany; National Museum of Natural History, Paris, France; Field Museum of Natural History, Chicago, Illinois USA; the University of Wisconsin, Madison, USA; the University of Arizona, Tucson, Arizona USA; Smithsonian Institution Libraries, Washington D.C. USA; The Linnean Society, London, England.

References

- Austin GT, Warren AD. 2002. Taxonomic notes on some Neotropical skippers (Lepidoptera: HesperIIDae): Pyrrhopyginae and Pyrginae. *Dugesiana* 9: 15-49.
- Burns JM. 1985. *Wallengrenia otho* and *W. egeremet* in eastern North America (Lepidoptera: HesperIIDae: HesperIIDae). *Smithsonian Contributions to Zoology* 423: 1-39.
- Burns JM, Janzen DH. 1999. *Drephalys*: division of this showy Neotropical genus, plus a new species and the immatures and food plants of two species from Costa Rican dry forest (HesperIIDae: Pyrginae). *Journal of the Lepidopterists' Society* 53: 77-89.
- Burns JM, Janzen DH. 2001. Biodiversity of Pyrrhopygine skipper butterflies (HesperIIDae) in the Area de Conservación de Guanacaste, Costa Rica. *Journal of the Lepidopterists' Society* 55: 15-43.
- Cock MJW. 1991. The skipper butterflies (HesperIIDae) of Trinidad. Part 7, genera group E (first section). *Living World, Journal of the Trinidad and Tobago Field Naturalists' Club* 1991-1992: 46-56.
- Cock MJW. 1996. The skipper butterflies (HesperIIDae) of Trinidad. Part 8, Genera group E (second section). *Living World, Journal of the Trinidad and Tobago Field Naturalists' Club* 1995-1996: 27-37.
- Cock MJW. 1998. The skipper butterflies (HesperIIDae) of Trinidad. Part 9, Genera group E concluded (third section) with a description of a new species of *Clito* Living World. *Journal of the Trinidad and Tobago Field Naturalists' Club* 1997-1998: 33-45.
- Cock MJW. 2000. The skipper butterflies (HesperIIDae) of Trinidad. Part 10, Pyrginae concluded; Genera groups F and G. *Living World, Journal of the Trinidad and Tobago Field Naturalists' Club* 1998-1999: 49-71.
- Cock MJW. 2001. Notes on butterflies seen or collected on a short visit to Nevis, W.I., including the life history of *Epargyreus zestos* Geyer (HesperIIDae). *Living World, Journal of the Trinidad and Tobago Field Naturalists' Club* 2001: 27-36.
- Cock MJW. 2003. The skipper butterflies (HesperIIDae) of Trinidad. Part 11, HesperIIDae, Genera group O. *Living World, Journal of the Trinidad and Tobago Field Naturalists' Club* 2003: 14-48.
- Evans WH. 1955. A Catalogue of the HesperIIDae indicating the classification and nomenclature adopted in the British Museum (Natural History). Part IV. *HesperIIDae and Megathyminae*. British Museum, London.
- Greeney HF, Dobbs RC, Diaz GIC, Kerr S, Hayhurst JG. 2006. Breeding biology of the Green-fronted Lancebill (*Doryfera ludovicae*) in eastern Ecuador. *Ornitologia Neotropical* 17: 321-331.
- Greeney HF, Jones M. 2003. Shelter building in the HesperIIDae: A classification scheme for larval shelters. *Journal of Research on the Lepidoptera* 37: 27-36.
- Greeney HF, Sheldon KS. 2008. Comments on the natural history and larval shelter construction of *Urbanus proteus* Linn. (Lepidoptera: HesperIIDae: Pyrginae) in southern Florida. *Journal of the Lepidopterists' Society* 62: in press
- Greeney HF, Warren AD. 2003. Notes on the life history of *Eantis thraso* (HesperIIDae: Pyrginae) in Ecuador. *Journal of the Lepidopterists' Society* 57: 43-46.

- Greeney HF, Warren AD. 2004. The life history of *Noctuana haematospila* (Hesperiidae: Pyrginae) in Ecuador. *Journal of the Lepidopterists' Society* 58: 6-9.
- Greeney HF, Warren AD. 2009. The life history of *Vettius coryna* (Hesperiidae: Hesperinae) in Ecuador. *Journal of Insect Science* 9:28, available online: <http://insectscience.org/9.28>.
- Mabille P. 1897. Description de Lépidoptères nouveaux. *Annales de la Société Entomologique de France* 66: 182-231.
- Mielke OHH. 1995. Revisão de *Elbella* Evans e gêneros afins (Lepidoptera, Hesperiidae, Pyrrhopyginae). *Revista Brasileira de Zoologia* 11: 395-586.
- Moss AM. 1949. Biological notes on some "Hesperiidae" of Para and the Amazon (Lep. Rhop.). *Acta Zoologica Lilloana* 7: 27-79.
- Steinhauser SR. 1989. Taxonomic notes and descriptions of new taxa in the Neotropical Hesperiidae. Part I. Pyrginae. *Bulletin of the Allyn Museum* 1271-70.
- Weiss MR. 2003. Good housekeeping: why do shelter-dwelling caterpillars fling their frass? *Ecology Letters* 6: 361-370.
- Young AM. 1991. Notes on the natural history of *Quadrus (Pythonides) contubernalis* (Hesperiidae) in Costa Rica. *Journal of the Lepidopterists' Society* 45: 366-371.
- Young AM. 1994. Notes on the natural history of *Achlyodes selva* (Hesperiidae) in Costa Rica. *Journal of the Lepidopterists' Society* 47: 323-327.