

The Immature Stages and Natural History of *Veladyris pardalis* (Salvin, 1869) in Eastern Ecuador (Lepidoptera: Nymphalidae: Lthomiinae)

Authors: Greeney, Harold F., Hill, Ryan I., Rosendo Simbaña, Wilmer, and Gentry, Grant

Source: Journal of Insect Science, 9(35) : 1-6

Published By: Entomological Society of America

URL: <https://doi.org/10.1673/031.009.3501>

The BioOne Digital Library (<https://bioone.org/>) provides worldwide distribution for more than 580 journals and eBooks from BioOne's community of over 150 nonprofit societies, research institutions, and university presses in the biological, ecological, and environmental sciences. The BioOne Digital Library encompasses the flagship aggregation BioOne Complete (<https://bioone.org/subscribe>), the BioOne Complete Archive (<https://bioone.org/archive>), and the BioOne eBooks program offerings ESA eBook Collection (<https://bioone.org/esa-ebooks>) and CSIRO Publishing BioSelect Collection (<https://bioone.org/csiro-ebooks>).

Your use of this PDF, the BioOne Digital Library, and all posted and associated content indicates your acceptance of BioOne's Terms of Use, available at www.bioone.org/terms-of-use.

Usage of BioOne Digital Library content is strictly limited to personal, educational, and non-commercial use. Commercial inquiries or rights and permissions requests should be directed to the individual publisher as copyright holder.

BioOne is an innovative nonprofit that sees sustainable scholarly publishing as an inherently collaborative enterprise connecting authors, nonprofit publishers, academic institutions, research libraries, and research funders in the common goal of maximizing access to critical research.



The immature stages and natural history of *Veladyris pardalis* (Salvin, 1869) in eastern Ecuador (Lepidoptera: Nymphalidae: Ithomiinae)

Harold F. Greeney^{1,a}, Ryan I. Hill^{2,b}, Wilmer Rosendo Simbaña^{3,c} and Grant Gentry^{4,d}

¹ Yanayacu Biological Station & Center for Creative Studies, Cosanga, Ecuador c/o 721 Foch y Amazonas, Quito, Ecuador

² 3060 Valley Life Sciences Building, Department of Integrative Biology, University of California, Berkeley, CA 94720

³ Yanayacu Biological Station & Center for Creative Studies, Cosanga, Ecuador c/o 721 Foch y Amazonas, Quito, Ecuador

⁴ Department of Ecology and Evolutionary Biology, Tulane University, New Orleans, LA 70118

Abstract

We describe the immature stages and oviposition behavior of *Veladyris pardalis* (Salvin, 1869) from northeastern Ecuador. An unidentified species of *Solanum* (Solanaceae) is the larval food plant. Eggs are laid singly on leaves, stems or epiphytes growing on the host. *Veladyris pardalis* has four larval stadia, and takes 64–70 days to mature from oviposition to adult.

Keywords: Andes, cloud forest, egg, larva, oviposition, pupa, Solanaceae, *Solanum*

Correspondence: ^arevmmoss@yahoo.com, ^brihill@berkeley.edu, ^crosendo_cat@yahoo.com, ^dbungalotis@hotmail.com

Received: 8 April 2008 | **Accepted:** 25 June 2008 | **Published:** 2 June 2009

Associate Editor: Jim Miller was editor of this paper

Copyright: This is an open access paper. We use the Creative Commons Attribution 3.0 license that permits unrestricted use, provided that the paper is properly attributed.

ISSN: 1536-2442 | Vol. 9, Number 35

Cite this paper as:

Greeney HF, Hill RI, Simbaña W, Gentry G. 2009. The immature stages and natural history of *Veladyris pardalis* (Salvin, 1869) in eastern Ecuador (Lepidoptera: Nymphalidae: Ithomiinae). 6pp. *Journal of Insect Science* 9:35, available online: insectscience.org/9.35

Introduction

Natural history and morphological data for butterfly immature stages have proven to be useful for constructing and testing phylogenetic hypotheses (e.g., DeVries et al. 1985; Brown and Freitas 1994; Penz 1999, 2007; Freitas et al. 2002; Freitas and Brown 2004; Willmott and Freitas, 2006). A recent study of the Neotropical nymphalid subfamily Ithomiinae (Willmott and Freitas 2006) underscores the importance of acquiring data on immature stages; larval characters elucidate basal relationships that are otherwise weakly supported or obscure. Although a wealth of life history information has been published on the Ithomiinae (see Brown and Freitas 1994, Willmott and Freitas 2006 and references therein), for several key genera nothing is known, and *Veladyris* is one of those (Masters 1972, Freitas and Brown 2002, Lamas 2004).

Veladyris currently contains a single species, *V. pardalis*, but Lamas (2004) suggests the existence of a second as yet undescribed species. The phylogenetic position of the genus has been relatively consistent in recent molecular and morphological analyses. *Veladyris* is either considered to stand alone or, with *Velamysta* as its sister genus, to form the most basal lineage of the tribe Godyridini (Brower et al. 2006; Willmott and Freitas 2006).

Veladyris pardalis flies in eastern Andean cloud forest habitats, from Colombia south to Bolivia (Masters, 1972; Lamas 2004), but little else is known of its biology. Here, we describe the early stages of *V. pardalis* from eastern Ecuador, thus adding to our understanding of ithomiine biology.

Materials and Methods

We carried out all rearing and field investigations at the Yanayacu Biological Station and Center for Creative Studies (YBS: 00°35.949 S, 77°53.403 W), located in Napo Province, in the Andes of northeastern Ecuador. The study site is located approximately five kilometers west of the town of Cosanga, and includes around 2000 hectares of primary cloud forest bordered by cattle pastures and other disturbed habitats (see Greeney et al. 2006 and Valencia 1995). We collected larvae at 2100 m, and reared them in glass jars at the onsite ambient research lab, located at 2150 m.

We observed oviposition events on 16 different occasions. We reared several larvae from the last instar to eclosion, and one individual from egg to adult. We added fresh food plant as needed, removing frass and old leaves daily. We took larval measurements on the day prior to molting.

Results

Oviposition behavior

Females search for oviposition sites between 10:00 and 14:00 on sunny and overcast days. They are generally inactive during periods of rain, but may continue to oviposit during light rains in the afternoon, as long as the morning itself was sunny. While searching for hostplants, females fly slowly through the understory, rarely flying above 5 m. They generally land on any broad-leafed plant below this height, pausing briefly, usually with their wings held slightly apart, to drum with their forelegs and touch their antennae to the leaf surface. Upon locating a suitable foodplant, they often fly slowly about the plant, landing on its leaves as well as those of adjacent species. Females lay 1–4 eggs (always singly), either by landing on the ventral surface of the host leaf (Figure 3) or, less frequently by landing on the leaf's edge and curling their abdomen underneath. Eggs are occasionally laid on epiphytic moss hanging from leaves of the foodplant.

Egg (Figures 1a, 1b)

n = 7; diameter approx. 1 mm, height 1.5 mm; development time = 10 days).

White, barrel-shaped, widest around the lower third; surface covered with vertical rows of divot-like sculpturing; laid singly (n = 16); upon emergence, larvae consume entire egg shell.

First instar (Figures 1c, 1d)

n = 1; body length = 3.5–5.0 mm; development time = 6 days

Head capsule sub-quadrate, slightly broader at base, with a weak epicranial suture; head surface shiny, translucent brown, bearing a few sparse, long, pale setae; body parallel-sided, each segment slightly produced laterally; body white, with green gut contents showing through later in instar, body sparse covered with long, soft, dark setae; prothoracic shield weakly sclerotized, transparent; anal plate and A10 prolegs lightly sclerotized, dark grey; thoracic legs pale, similar in coloration to body.

Second instar (Figures 1e, 1f)

n = 2; body length = to 7.5 mm; development time = 8 days

Head capsule more rounded than in 1st instar, with a weak epicranial suture; head surface smooth, orange with dark stemmata and mandibles, a moderately dense covering of short, soft, pale setae; body round in cross-section, less produced laterally than 1st instar, lateral projections only noticeable on abdomen, largest on A8; body mostly transparent, showing green dorsally from ingested material in gut; body white below spiracular line, white extending to subdorsal area on T1 and A8; A10 often appearing darker in color due to presence of internal frass pellets; body bearing minute, short pale setae, longest on A10; as larva matures, white subspiracular areas

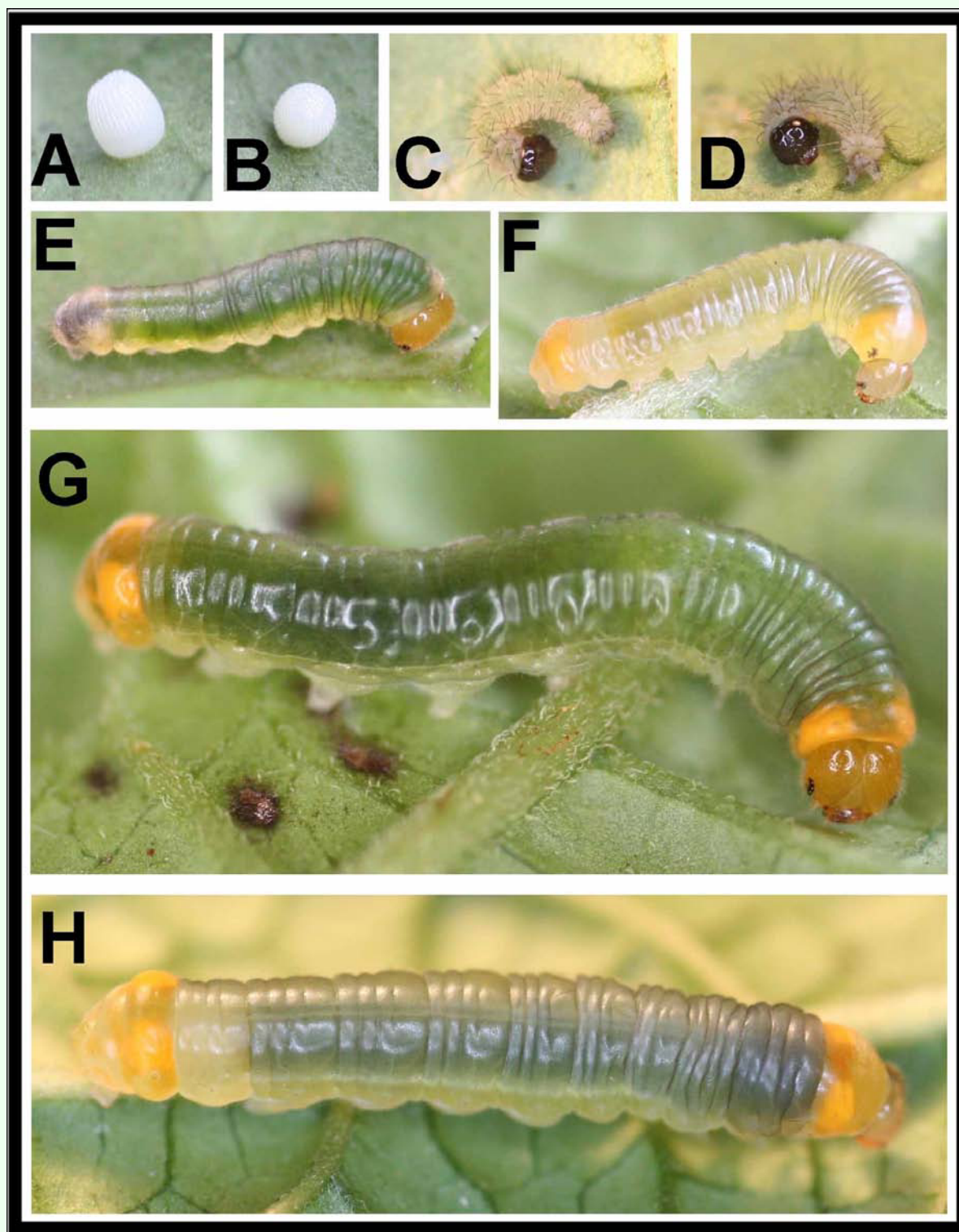


Figure 1. Immature stages of *Veladyris pardalis* at Yanayacu Biological Station (YBS), Napo Province, Ecuador: a–b) egg; c–d) 1st instar; e) early 2nd instar; f) premolt 2nd instar; g) 3rd instar; h) premolt 3rd instar.

becoming less apparent and white dorsal areas on T1 and A8 becoming yellow-orange.

Third instar (Figures 1g, 1h)

n = 5; body length = to 18 mm; development time = 10–12 days

Head and body similar to late 2nd instar, T1 and A8–A9 almost entirely pale orange, T1 and A8 bearing large,

distinct, darker orange subdorsal spots, lateral swellings on A8 more pronounced than in 2nd instar; prolegs white, rest of body transparent, showing color of gut contents; as larva matures, a faint, longitudinal, supraspiracular white line appears on A1–A7, body develops a dull, purple-grey cast.

Fourth instar (Figures 2a–c)

n = 12; body length = to 35 mm; development time = 14–16 days including pre-pupa

Head and body similar to late 3rd instar; body ground color purple-grey to powdery-white (Figures 2b–c), with a thin, white subspiracular stripe from T2–A7; dorsal and lateral surfaces of T1 bright orange; a pair of large orange subdorsal spots extending across A8 and A9, A8 noticeably swollen; as larva matures, powdery-white cast disappears, body becomes transparent and shiny; orange spots on T1 become confined to dorsum; A9 portion of subterminal orange spots becoming bright white (Figure 2a).

Pre-pupa (Figure 3)

n = 6; development time = 2–3 days

Pre-pupal larva becoming almost entirely translucent lime-green; head slightly more yellow than in 4th instar; larva spins a white silk pad.

Pupa (Figures 2d–f)

n = 2; development time = 16–18 days

Robust, pendant, angle between abdomen and thorax (“pupal angle” of Willmott and Freitas 2006) 90°; body entirely translucent lime-green, darkening slightly with age and appearing “oily”; body surface weakly reflecting a metallic gold color when viewed from various angles, never with distinct metallic patches found in other ithomiines.

Discussion

Veladyris was originally placed in the Godyridini based on its genitalia (Fox, 1956). More recent systematic studies utilizing molecular and morphological data support this classification (Brower et al. 2006; Willmott and Freitas 2006). Willmott and Freitas (2006) did not identify unambiguous synapomorphies from early stages to unite the Godyridini. Our observations confirm that *Veladyris pardalis* immatures resemble other Godyridini and Dircennini. The pupa is squat and robust with a 90° pupal angle, as in *Hypoleria*, *Brevioleria*, *Dircenna* and *Hyalenna*. A weakly patterned larval body and head is typical of many Godyridini (Brown and Freitas 1994; Willmott and Freitas 2006; RIH pers. obs.). However, *Veladyris pardalis* exhibits more pronounced coloration than many godyridines, with orange extending across the dorsum on T1 and A8. The presence of a subdorsal stripe which expands dorsally onto A8 is otherwise known only

in caterpillars of *Pteronymia* (Dircennini; Willmott and Freitas 2006 Character 48).

Willmott and Freitas (2006) listed several unambiguous synapomorphies uniting the Godyridini and Dircennini (excluding *Callithomia*). Like other members of this clade (node #33 of Fig. 5 in Willmott and Freitas 2006), the pupa of *V. pardalis* is a pronounced green color (their Character 63:2), the final instar has pale thoracic legs (Character 18:1), and larvae have a green venter (Character 51:2). However, *Veladyris pardalis* does not show three of the node #33 synapomorphies: 1st instars have a brown head capsule (12:1); the 4th instar head capsule is light brown; and larvae have lateral swellings on A8 (33:1).

Larvae of *Veladyris* show similarities, as well as differences, when compared with caterpillars of *Velamysta*, its purported sister genus (illustrated in Brown and Freitas 1994, Willmott and Freitas 2006). However, precise comparisons are somewhat ambiguous because of interspecific differences within *Velamysta*: *Velamysta pupilla cruxifera* appears to differ from its congener, *V. phengites phengites*, nearly as much as it does from *Veladyris pardalis*. Notable similarities between *Velamysta* and *Veladyris* include traits broadly shared across the Dircennini and Godyridini. Examples include an unmarked head capsule and body. In addition, the *Velamysta pupilla cruxifera* larva figured by Brown and Freitas (1994) has the subdorsal band on A8 expanded dorsally, somewhat similar to that of *Veladyris pardalis* and *Pteronymia* (Dircennini), but lacks the prothoracic band found in the latter two genera. First instars of *Veladyris* and *Velamysta pupilla cruxifera* have a dark head capsule (Brown and Freitas 1994), whereas that of *Velamysta phengites phengites* is pale (Willmott and Freitas 2006, figure 8K). Finally, 1st instars of *Veladyris* and *Velamysta* have pale thoracic legs.

Larvae of *V. pardalis* at YBS feed on *Solanum*, thus providing support for basal placement of *Veladyris* within the Godyridini. Known Godyridini hosts are largely in the genus *Cestrum* (Solanaceae), although *Godyris* uses *Solanum* in addition to *Cestrum* (Willmott and Freitas 2006). *Solanum* is the most commonly used host among ithomiines (Willmott and Freitas 2006) and is also used by genera in the tribes Dircennini and Oleriini. Host relationships of these related genera suggest that *Solanum* is the plesiomorphic host association for the Godyridini, whereas *Cestrum*-feeding is derived.

Interestingly, *Veladyris pardalis* is only the second species of ithomiine reported to have four larval stadia; all others have five. The other ithomiine with four instars is *Sais rosalia* from Brazil (Freitas and Brown 2002), belonging to the tribe Mechanitini (Brower et al 2006, Willmott and Freitas 2006). Instar number in *Velamysta* is currently unknown. It will be interesting to rear additional genera

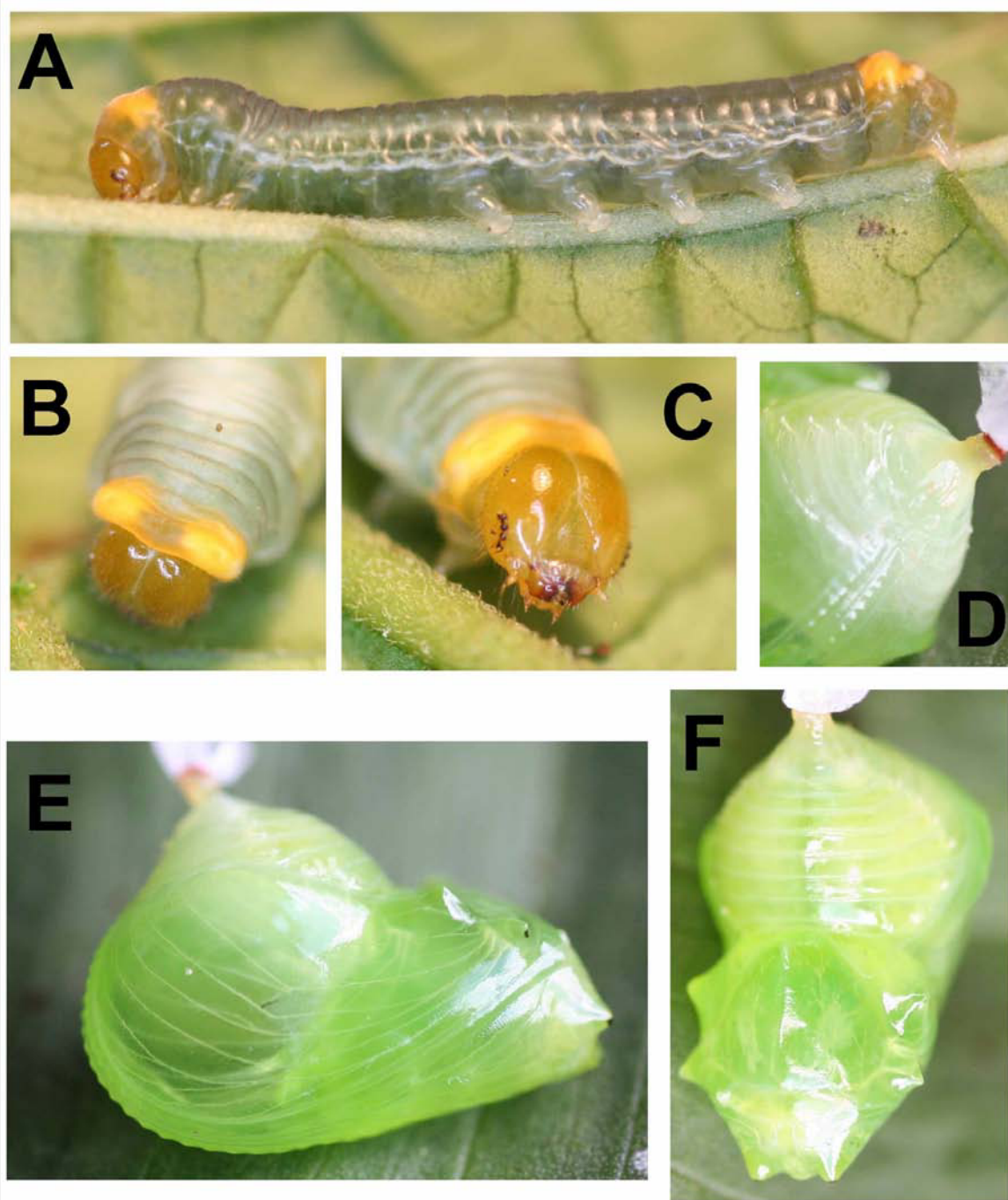


Figure 2. Immature stages of *Veladyris pardalis* at YBS: a) 4th (final) instar; b–c) head capsule of 4th instar; d) cremaster and abdominal segments of pupa; e–f) freshly formed pupa.

and species to better document the distribution of this character in the Ithomiinae.

Acknowledgments

For assistance in the field, we thank Rafael Granizo, Oscar Manzaba-B., and Jose Simbaña. HFG thanks Ruth Ann and John V. Moore, the Population Biology

Foundation, and Matt Kaplan for financial support. This study was also funded in part by grant # NSF DEB-0346729. For continued support of our Neotropical natural history studies we thank the PBNHS, the C. del Agua lab, Tim Metz, Jay Peltz, and the Humboldt Crew. We thank Andy Brower and Andre Freitas for helpful comments on earlier versions. This is publication number 184 of the Yanayacu Natural History Research Group.



Figure 3. Female *Veladyris pardalis* ovipositing at YBS. Inset shows a pre-pupal larva.

Editor's note

Paper copies of this article will be deposited in the following libraries. Senckenberg Library, Frankfurt Germany; National Museum of Natural History, Paris, France; Field Museum of Natural History, Chicago, Illinois USA; the University of Wisconsin, Madison, USA; the University of Arizona, Tucson, Arizona USA; Smithsonian Institution Libraries, Washington D.C. USA; The Linnean Society, London, England.

References

- Brower AVZ, Freitas AVL, Lee MM, Silva-Brandao KL, Whinnett A, Willmott KR. 2006. Phylogenetic relationships among the Ithomiini (Lepidoptera : Nymphalidae) inferred from one mitochondrial and two nuclear gene regions. *Systematic Entomology* 31: 288-301.
- Brown KS, Freitas AVL. 1994. Juvenile stages of Ithomiinae: overview and systematics (Lepidoptera: Nymphalidae). *Tropical Lepidoptera* 5: 9-20.
- Devries PJ, Kitching IJ, Vanewright RI. 1985. The systematic position of *Antirrhoea* and *Caerois*, with comments on the classification of the Nymphalidae (Lepidoptera). *Systematic Entomology* 10: 11-32.
- Fox RM. 1956. A monograph of the Ithomiidae (Lepidoptera). 1. *Bulletin of the American Museum of Natural History* 111: 1-76.
- Freitas A, Murray D, Brown KS. 2002. Immatures, natural history and the systematic position of *Bia actorion* (Nymphalidae). *Journal of the Lepidopterists' Society* 56: 117-122.
- Freitas AVL, Brown KS. 2004. Phylogeny of the Nymphalidae (Lepidoptera). *Systematic Biology* 53: 363-383.
- Freitas AVL, Brown KS. 2002. Immature stages of *Sais rosalia* (Nymphalidae, Ithomiinae). *Journal of the Lepidopterists' Society* 56: 104-106.
- Greeney HF, Dobbs RC, Diaz GIC, Kerr S, Hayhurst JG. 2006. Breeding biology of the Green-fronted Lancebill (*Doryfera ludovicae*) in eastern Ecuador. *Omitologia Neotropical* 17: 321-331.
- In: Lamas G, editor. 2004. *Atlas of Neotropical Lepidoptera - Checklist: Part 4A Hesperioidea - Papilionoidea*. Scientific Publishers
- Masters JH. 1972. Notes on the Butterflies of the Genus *Velamysta* Ithomiidae with a Key to the Species by W T M Forbes. *Mid-Continent Lepidoptera Series* 4: 1-8.
- Penz CM. 1999. Higher level phylogeny for the passion-vine butterflies based on early stage and adult morphology. *Zoological Journal of the Linnean Society* 127: 277-344.
- Penz CM. 2007. Evaluating the monophyly and phylogenetic relationships of Brassolini genera (Lepidoptera, Nymphalidae). *Systematic Entomology* 32: 668-689.
- Valencia RR. In: Churchill S, Balslev H, Forero E, Luteyn JL, editors. 1995. Composition and structure of an Andean forest fragment in eastern Ecuador. *Biodiversity and conservation of Neotropical montane forests* 239-249. The New York Botanical Garden