

New Record for the Coffee Berry Borer, *Hypothenemus hampei*, in Hawaii

Authors: Burbano, Elsie, Wright, Mark, Bright, Donald E., and Vega, Fernando E.

Source: Journal of Insect Science, 11(117) : 1-3

Published By: Entomological Society of America

URL: <https://doi.org/10.1673/031.011.11701>

The BioOne Digital Library (<https://bioone.org/>) provides worldwide distribution for more than 580 journals and eBooks from BioOne's community of over 150 nonprofit societies, research institutions, and university presses in the biological, ecological, and environmental sciences. The BioOne Digital Library encompasses the flagship aggregation BioOne Complete (<https://bioone.org/subscribe>), the BioOne Complete Archive (<https://bioone.org/archive>), and the BioOne eBooks program offerings ESA eBook Collection (<https://bioone.org/esa-ebooks>) and CSIRO Publishing BioSelect Collection (<https://bioone.org/csiro-ebooks>).

Your use of this PDF, the BioOne Digital Library, and all posted and associated content indicates your acceptance of BioOne's Terms of Use, available at www.bioone.org/terms-of-use.

Usage of BioOne Digital Library content is strictly limited to personal, educational, and non-commercial use. Commercial inquiries or rights and permissions requests should be directed to the individual publisher as copyright holder.

BioOne is an innovative nonprofit that sees sustainable scholarly publishing as an inherently collaborative enterprise connecting authors, nonprofit publishers, academic institutions, research libraries, and research funders in the common goal of maximizing access to critical research.



New record for the coffee berry borer, *Hypothenemus hampei*, in Hawaii

Elsie Burbano^{1a*}, Mark Wright^{1b}, Donald E. Bright^{2c}, and Fernando E. Vega^{3d}

¹University of Hawaii, Department of Plant and Environmental Protection Sciences, College of Tropical Agriculture and Human Resources, 3050 Maile Way, Honolulu, HI 96822

²Colorado State University, Department of Bioagriculture Sciences and Pest Management, Fort Collins, CO 80523

³Sustainable Perennial Crops Laboratory, U. S. Department of Agriculture, Agricultural Research Service, Bldg 001, BARC West, Beltsville, MD 20705

Abstract

The coffee berry borer, *Hypothenemus hampei* (Ferrari) (Coleoptera: Curculionidae) is endemic to Africa and is the most devastating pest of coffee worldwide. The female bores a hole in the coffee berry and deposits her eggs inside. Upon hatching, larvae feed on the seeds, thus reducing both quality and yields of the marketable product. The coffee berry borer was found in the district of Kona on the island of Hawaii in August 2010 and appears to be restricted to that area.

Keywords: bark beetle, broca, Scolytinae

Correspondence: ^a eburbano@hawaii.edu, ^b markwrig@hawaii.edu, ^c Donald.Bright@colostate.edu, ^d Fernando.Vega@ars.usda.gov, *Corresponding author

Editor: Todd Shelly was Editor of this paper.

Received: 19 October 2010, **Accepted:** 31 December 2010

Copyright : This is an open access paper. We use the Creative Commons Attribution 3.0 license that permits unrestricted use, provided that the paper is properly attributed.

ISSN: 1536-2442 | Vol. 11, Number 117

Cite this paper as:

Burbano E, Wright M, Bright DE, Vega FE. 2011. New record for the coffee berry borer, *Hypothenemus hampei*, in Hawaii. *Journal of Insect Science* 11:117 available online: insectscience.org/11.117

Introduction

The coffee berry borer, *Hypothenemus hampei* (Ferrari) (Coleoptera: Curculionidae, Scolytinae; Figure 1), is a bark beetle endemic to Central Africa and now distributed throughout all coffee producing countries in the world, with the exception of Nepal and Papua New Guinea. It is the most economically important coffee pest worldwide (Le Pelley 1968; Vega 2008). Colonizing females bore a hole in the coffee berry and deposit eggs within galleries, followed by larval feeding on the coffee seed (Figure 2). This reduces both yield and quality of coffee, which in turn affects the income of coffee growers (Damon 2000; Jaramillo et al. 2006). There is sibling mating among the adult progeny with a 10:1 sex ratio favoring females. Therefore, when new adult females emerge from the berry, they are already inseminated and ready to locate another berry in which to continue their life cycle (Vega et al. 2009). Male insects do not fly and remain inside the berry.

Discovery of *H. hampei* in Kona

In August 2010, *H. hampei* was found in South Kona, Island of Hawaii. Specimens were identified by Donald E. Bright of Colorado State University, Al Samuelson of Bishop Museum, and Natalia J. Vandenberg of the Systematic Entomology Laboratory, USDA-ARS. The infestation in South Kona extends from Kainaliu to Opihihale (Figure 3; Hawaii Department of Agriculture 2010a), which indicates the insect has been present on the island for some time. The insect has not yet been found on any other Hawaiian island.



Figure 1. Dorsal view of an adult coffee berry borer, *Hypothenemus hampei* (left) and adult female (~ 2 mm long) walking over a coffee seed (right). Photos by Eric Erbe, USDA, ARS (left) and Peggy Greb, USDA, ARS (right). High quality figures are available online.

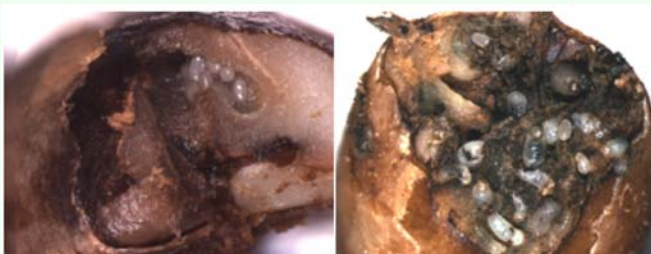


Figure 2. *Hypothenemus hampei* galleries containing eggs (left), and eggs and larvae (right). Photos by Elsie Burbano. High quality figures are available online.

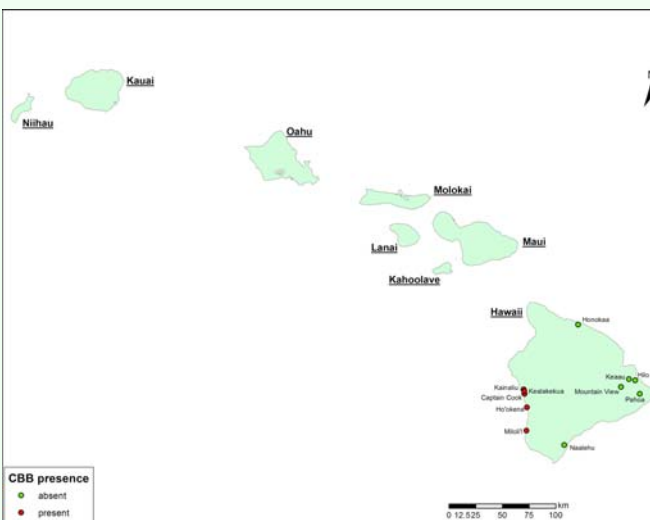


Figure 3. Distribution of *Hypothenemus hampei* in the district of Kona, Island of Hawai'i. Pest incidence data by Hawaii Department of Agriculture. Map courtesy of Kai Sonder, CIMMYT. High quality figures are available online.

Among the usual pest management options that can be implemented against *H. hampei* are the use of biological control agents, such as parasitoids and fungal entomopathogens such as *Beauveria bassiana*. One promising area is the identification of attractants and/or repellents that can be used against the insect.

These pest management options were recently reviewed by Vega et al. (2009). In addition, crop sanitation could hold promise in reducing pest impact. This strategy would require an agreement among growers to harvest and destroy infested berries (Bustillo et al. 1998). Removing the food source for *H. hampei* could have a significant impact while the beetle still has a very limited distribution across Hawaii. As of 30 September 2010, only 8 farms were known to be infested in Kona (Department of Agriculture 2010b).

Acknowledgements

We thank the Hawaii Department of Agriculture for providing data on insect localities, and Kai Sonder from the International Maize and Wheat Improvement Center in Mexico for preparing the map.

References

- Bustillo AE, Cárdenas R, Villalba D, Benavides P, Orozco J, Posada FJ. 1998. Manejo integrado de la broca del café, *Hypothenemus hampei* (Ferrari) en Colombia. Cenicafé.
- Damon A. 2000. A review of the biology and control of the coffee berry borer, *Hypothenemus hampei* Ferrari (Coleoptera: Scolytidae). *Bulletin of Entomological Research* 90: 453-465.
- Hawaii Department of Agriculture. 2010a. Coffee berry borer, *Hypothenemus hampei* Ferrari (Coleoptera: Curculionidae: Scolytinae). New pest advisory No. 10-01. Available online, <http://hawaii.gov/hdoa/pi/ppc/coffee-berry-borer-folder/Pest%20Advisory%20-%20CBB.pdf>
- Hawaii Department of Agriculture. 2010b. CBB survey status report. Available online, <http://hawaii.gov/hdoa/pi/ppc/coffee-berry-borer-folder/cbb-survey-status-report>
- Jaramillo J, Borgemeister C, Baker P. 2006. Coffee berry borer *Hypothenemus hampei* (Coleoptera: Curculionidae): searching for sustainable control strategies. *Bulletin of Entomological Research* 96: 223-233.
- Le Pelley RH. 1968. *Pests of Coffee*. Longmans Green and Co., Ltd.
- Vega FE. 2008. Coffee berry borer, *Hypothenemus hampei* (Ferrari) (Coleoptera: Curculionidae: Scolytinae). In: Capinera JL, Editor. *Encyclopedia of Entomology*, 2nd edition. pp. 959-960. Springer.
- Vega FE, Infante F, Castillo A, Jaramillo J. 2009. The coffee berry borer, *Hypothenemus hampei* (Ferrari) (Coleoptera: Curculionidae): a short review, with recent findings and future research directions. *Terrestrial Arthropod Reviews* 2: 129-147.