

## **Assessment of Darkling Beetle Fauna after Implementation of an Environmental Restoration Program in the Southern Iberian Peninsula Affected by the Aznalcóllar Toxic Spill**

Authors: Cárdenas, Ana M., Bujalance, José L., and Hidalgo, Juan M.

Source: Journal of Insect Science, 11(58) : 1-16

Published By: Entomological Society of America

URL: <https://doi.org/10.1673/031.011.5801>

---

BioOne Complete ([complete.BioOne.org](https://complete.BioOne.org)) is a full-text database of 200 subscribed and open-access titles in the biological, ecological, and environmental sciences published by nonprofit societies, associations, museums, institutions, and presses.

Your use of this PDF, the BioOne Complete website, and all posted and associated content indicates your acceptance of BioOne's Terms of Use, available at [www.bioone.org/terms-of-use](http://www.bioone.org/terms-of-use).

Usage of BioOne Complete content is strictly limited to personal, educational, and non - commercial use. Commercial inquiries or rights and permissions requests should be directed to the individual publisher as copyright holder.

---

BioOne sees sustainable scholarly publishing as an inherently collaborative enterprise connecting authors, nonprofit publishers, academic institutions, research libraries, and research funders in the common goal of maximizing access to critical research.



## Assessment of darkling beetle fauna after implementation of an environmental restoration program in the Southern Iberian Peninsula affected by the Aznalcóllar toxic spill

Ana M. Cárdenas<sup>1a\*</sup>, José L. Bujalance<sup>2b</sup>, and Juan M. Hidalgo<sup>3c</sup>

<sup>1</sup>Department of Zoology, University of Córdoba. Campus Universitario Rabanales. Edif. Darwin. E-14071-Córdoba, Spain

<sup>2</sup>Pl. Blas Infante, 1. 14850 BAENA, Córdoba, Spain

<sup>3</sup>Department of Zoology, University of Córdoba. Campus Universitario Rabanales. Edif. Darwin. E-14071-Córdoba, Spain

### Abstract

This study is part of the Follow up Restoration Program of animal communities that colonize the Guadiamar River Basin. In 1998, the area was affected by a release of toxic sludge after the retention walls of the Aznalcóllar Mines (southern Iberian Peninsula) broke. The main objective of this study was to assess the current state of the population of Tenebrionidae, one of the most representative groups of edaphic Coleoptera inhabiting the Guadiamar River Basin. This paper analyses the progress made by the darkling beetle community six years after the disaster occurred and the Restoration Program was implemented. The study is based on faunistic data from systematic sampling carried out for six years to monitor plots distributed across the damaged area. To make an overall assessment of the tenebrionid fauna in relation to adjacent areas qualitative and quantitative ecological indices were applied, and temporal follow up and biogeographical comparisons were also made. The results indicate that, on the whole, tenebrionid fauna was somewhat affected by the Aznalcóllar Mine spill, and that a greater loss of fauna was detected closer to the accident site. The analysis of the temporal population dynamic suggests that the most affected zones are undergoing a process of re-colonization. However, this process varies widely by species and has not yet reached the expected levels of a non-affected river basin in the southern Iberian Peninsula.

**Keywords:** Coleoptera; Edaphic insects; Environmental recovery; Guadiamar; Tenebrionidae; mine accident  
**Abbreviations:** PICOVER, Green Corridor and Guadiamar Restoration Project; SECOVER, Eco-Regional Monitoring of the Guadiamar Green Corridor

**Correspondence:** <sup>a\*</sup> [balcataa@uco.es](mailto:balcataa@uco.es), <sup>b</sup> [scaurus@wanadoo.es](mailto:scaurus@wanadoo.es), <sup>c</sup> [zo2himaj@uco.es](mailto:zo2himaj@uco.es). \*Corresponding author

**Received:** 24 March 2010, **Accepted:** 1 October 2010

**Copyright :** This is an open access paper. We use the Creative Commons Attribution 3.0 license that permits unrestricted use, provided that the paper is properly attributed.

**ISSN:** 1536-2442 | Vol. 11, Number 58

#### Cite this paper as:

Cárdenas AM, Bujalance JL, Hidalgo JM. 2011. Assessment of darkling beetle fauna after implementation of an environmental restoration program in the Southern Iberian Peninsula affected by the Aznalcóllar toxic spill. *Journal of Insect Science* 11:58 available online: [insectscience.org/11.58](http://insectscience.org/11.58)

## Introduction

---

In the spring of 1998, the retention walls in a tailing pond of the Aznalcóllar mine ruptured, releasing an estimated 6 Hm<sup>3</sup> of sludge containing pyrite and acidic waters into the Guadiamar River basin. The toxic waste inundated the floodplain, covering an area of 4600 ha over a 62 km tract with a depth of up to 1.5 m of sludge. The toxic sludge was diverted by a containing dyke just before reaching the boundaries of the Doñana National Park, declared a Biosphere Reserve by UNESCO in 1980 (Anguas et al. 2002).

The authorities immediately undertook a series of emergency measures to clean up and remove the sludge and set a plan in motion for the integral management of the river basin known as PICOVER, the Green Corridor and Guadiamar Restoration Project (Proyecto de Restauración del Corredor Verde y del Guadiamar). This plan included the remediation of degraded fluvial and terrestrial ecosystems together with the rehabilitation of the affected zone as an ecological corridor between two singular ecosystems: the Sierra Morena Mountains and the Doñana National Park (Cárdenas and Hidalgo 2006, 2007). The main sludge removal operations and courses of action undertaken to assist the restoration of the Guadiamar basin are described in PICOVER (2003). These initiatives were based on the environmental connectivity of protected areas in the Mediterranean basin (Castro 2003; García-Montes 2003).

In 2004, six years after the accident, a new program named SECOVER, Eco-Regional Monitoring of the Guadiamar Green Corridor (Seguimiento Ecorregional del

Corredor Verde del Guadiamar) was put into practice to assess whether the management of the affected area had indeed led to an environmental regeneration process and to design a long-term follow-up plan for the Green Corridor (Montes and Carrascal 2008).

The present study is framed in the above-mentioned SECOVER plan and examines changes to the darkling beetle (Coleoptera, Tenebrionidae) fauna after the implementation of the PICOVER project. Research is focused on these insects because they constitute a significant group within the soil macro-fauna and are highly susceptible to the effects of environmental disturbances because they are wing-less and have limited dispersion power. The close relationship between these coleopterans and soil conditions is enhanced by the fact that the larvae of many of the species are hypogeal thus making them highly vulnerable to soil pollution. As a consequence, any alteration in the edaphic system can induce changes in the composition and structure of the darkling beetle communities (Lavelle et al. 1997) that often lead to a loss of biodiversity.

In addition, Tenebrionids are well represented, highly abundant and diverse in Mediterranean ecosystems, where they play an important role in two different respects: as detritivorous insects, taking part in the recycling and transformation process of soil (Crawford 1979, 1991; Crawford and Taylor 1984) and as prey, forming a noteworthy part of the diet of many vertebrate predators (Cárdenas and Hidalgo 2006; Bujalance 2008). Moreover, darkling beetles are considered to be good bioindicators (de los Santos 1983; Favila and Halffer 1997; de los Santos et al 2002) that makes them a useful tool to be included in

environmental quality programs. Consequently, many measures of soil restoration could be assessed by following the spatial and temporal variation in tenebrionid communities.

This paper analyses the progress made by the darkling beetle community six years after the disaster occurred and the SECOVER program was implemented in order to assess the recovery level reached in area. The study is based on faunistic data taken during six years monitoring plots distributed across the damaged area. To make an overall assessment of the Tenebrionid fauna, qualitative and quantitative ecological indices were applied including measures of richness, diversity and evenness, for 6 years. Biogeographical comparisons were also made. To evaluate the level of recovery achieved in the affected zone in relation to adjacent areas, the results were compared with data from another external, ecologically similar area, the Bembézar River basin (Cárdenas and Bujalance 1985) that was unaffected by the toxic waste.

## Materials and Methods

### Study area

A comprehensive description of the study area can be found in Cárdenas and Hidalgo (2006). The Guadiamar River is located in the southern Iberian Peninsula and is one of the chief tributaries of the Guadalquivir River. The basin is approximately 65 km long and despite this short course it constitutes a true functional system between two interconnected natural areas (Montes 1999), the Doñana National Park and the Sierra Morena Mountains, both of which are of great ecological value. Detailed information concerning the abiotic features of the Doñana National Park and Sierra Morena Mountains can be found in García-Canseco et al. (2002)

and Cárdenas and Bach (1988a, b, 1989a) respectively.

Particularly in the Guadiamar area, the geological horizon of the upper reaches of the basin contains sulphide-rich mineral deposits, which support the mining at Aznalcóllar. The predominant vegetation in the area consists of open oak meadowlands alternating with pine forests and eucalyptus groves, as well as shrubs and scrubland. As a consequence of intensive human intervention, few of these formations remain in the middle reaches of the basin, having been replaced by cereal, cotton, oleaginous and fruit crops, while rice fields and unmanaged marshlands predominate in the lower reaches.

From a climatic point of view, the Guadiamar basin belongs to the sub-humid, Mediterranean type, with an annual rainfall of approximately 600 mm (Marvizón and Fernández-Caro 1981).

Abiotic data related to the Bembézar River, which is considered a control area, can be found in Cárdenas and Bach (1989b).

### Sample design

PICOVER established 22 monitoring plots that were common reference areas for the multidisciplinary group involved in this research. These monitoring plots were considered to be representative of the different morphological and eco-dynamic conditions of the Guadiamar river system, including both water and soil sampling stations. Comprehensive information about the area and the study sites can be found in Montes et al. (2003).

Ten of these monitoring plots were selected to perform the studies on soil fauna. Figure 1 shows the layout of these sites and more

detailed data concerning the location can be found in Table 1. As far as possible, site locations were chosen at regular intervals along a 60 km stretch of the disturbed riverbed, starting at the spot closest to the spillage (sampling site 1, see map). In addition, a sampling site named toxic plot (PT), from which toxic sludge was not removed during the clean-up operations, was also sampled in order to determine the persisting effect of the toxic sludge over the darkling beetle fauna.

Between March 2000 and September 2001 (first research project, PICOVER), each sampling station was visited twice a month to set and remove pitfall traps. Eight pitfall traps were set at each sampling site. The traps were active for 10-14 days depending on the weather conditions. The pitfall method is widely used in ecology for descriptive and functional studies of soil arthropod populations (Grüm 1980; de los Santos et al. 1982, 2002; Fenologio et al. 2007) and they are particularly appropriate for ground-living beetles when the aim is to compare diversity indices estimation (Henderson 2003). The traps consisted of cylindrical containers with a capacity of 1000 cc and were buried up to the top end and partially covered to prevent flooding. The traps were baited with approximately 250 cc of commercial acetic acid.

Later, between March 2004 and September 2005 (second phase, SECOVER), similar sampling procedures were used at the same sampling sites in order to make feasible comparisons and detect changes in the tenebrionid fauna that could indicate whether, in fact, the restoration actions did achieve regeneration of the area. Description of sampling stations from Bembézar river basin is described in Cárdenas and Bach (1989b).

**Table 1.** UTM Co-ordinates for the sampling sites

CODE	NAME	X	Y
P-1	Agrio/Guadamar	29SQ746685	4150719
P-2	Fresnos	29SQ746398	4150133
P-3	Encinar/fresnal	29SQ746227	4149161
P-4	Eucaliptal	29SQ745941	4145869
P-5	Pte. Las Doblas	29SQ745384	4142530
P-6	Pasado A° Molinillos	29SQ744748	4137899
P-7	Buitrago	29SQ742998	4132528
P-8	A° Alcarayón	29SQ742693	4127843
P-9	Vado del Quema	29SQ742763	4125585
P-10	La Cangrejera	29SQ746336	4121494
PT	Control Plot/ toxic sludge	29SQ742732	4127203

### Ecological methods

In order to characterise the dark beetle community, the same indices were applied in both research periods (PICOVER and SECOVER). These indices are those most commonly used in the study of insect populations (Ludwig and Reynolds 1988; Southwood 1991): richness, diversity and evenness vs. dominance.

To measure richness, the number of species was recorded and the following richness indices were used: Margalef's richness index R1

$$R1 = S - 1 / \ln(n)$$

and Menhinick's richness index R2 where

$$R2 = S / \sqrt{n}$$

where n= individuals observed and S=species number.

To measure diversity several indices were used following the criteria defined by Ludwig and Reynolds (1988):

Shannon index

$$H' = -\sum p_i \ln p_i$$

where  $p_i$ = proportional abundance of each species

Hill's diversity numbers N1

$$N1 = e^H$$

and N2

$$N2 = 1/\lambda, \lambda = \sum p_i^2$$

where  $p_i$  = proportional abundance of each species

Evenness/dominance was measured using Hill's ratio as suggested by Lyons (1981):

$$E5 = N2 - 1/N1 - 1$$

These parameters are suitable to be used for comparative purposes, especially if sampling methods, area size and sample size are similar (Southwood 1991), as in this case.

To evaluate the level of recovery achieved in the affected zone the SECOVER results were compared with data from an external, unaffected but ecologically similar area, the Bembézar River basin, another tributary of the Guadalquivir River. The Guadiamar and the Bembézar are 150 km apart at the mouth and share similar environmental features except for the mine spill. In addition to their similarities, Bembézar was selected as a control area because data concerning the area's darkling beetle populations are available (Cárdenas and Bujalance 1985). For this purpose, the rarefaction curves (Hurlbert 1971) were calculated as the most adequate method to allow comparisons when sample sizes vary due to different sampling methods having been applied. Details about this statistical procedure can be found in Ludwig and Reynolds (1988).

### Statistical analysis

In order to assess the effect of the distance from the spill on the tenebrionid beetles, the

**Table 2.** List of Tenebrionid species and their respective caught data from PICOVER and SECOVER sampling periods

TENEBRIONIDAE	PICOVER	SECOVER
<b>Subfamily Lagriinae</b>		
<i>Belopus elongatus</i> (Herbst 1797)	1	1
<b>Subfamily Pimelinae</b>		
<i>Boromorplus tagenioides</i> (Lucas 1849)		13
<i>Cnemeplatia rufa</i> Tournier 1874		11
<i>Stenosis hispanica</i> (Solier 1838)		14
<i>Dichillus subcostatus</i> (Solier 1848)		5
<i>Sepidium bidentatum</i> Solier 1838		38
<i>Tentyria platyceps</i> Steven 1829	150	1928
<i>Pachychila hispanica</i> Solier 1835	12	169
<b>SubFamily Tenebrioninae</b>		
<i>Palorus subdepressus</i> (Wollaston 1864)		1
<i>Alphitobius laevigatus</i> (Panzer 1797)		1
<i>Alphitobius diaperinus</i> (Fabricius 1781)	1	4
<i>Tribolium castaneum</i> (Herbst 1797)	1	3
<i>Nalassus skopini</i> (Español 1961)	1	
<i>Blaps hispanica</i> Solier 1848	5	
<i>Scaurus uncinus</i> (Foster 1771)	1	10
<i>Litoborus planicollis</i> (Waltl 1835)	4	2
<i>Opatroides thoracicus</i> (Rosenhauer 1856)		2
<i>Gonocephalum rusticum</i> (Olivier 1811)	8	35
<i>Gonocephalum granulatum meridionale</i> (Küster 1849)	187	77
<i>Scleron armatum</i> (Waltl 1835)	70	696
<b>Subfamily Diaperinae</b>		
<i>Crypticus gibbulus</i> (Quensel 1806)		3
<i>Ochrotus unicolor</i> Lucas 1852		4

overall area affected was divided into five sectors, approximately 10 km in length, each containing two sampling sites. Affinity between sectors was established using hierarchical cluster analysis. The Jaccard similarity coefficient was applied to the qualitative matrix data to obtain the corresponding dendrogram. This procedure considers the presence/absence of species and measures the extent to which different habitats have common species (Southwood 1991). It was applied to both the PICOVER and SECOVER sampling periods, and to both datasets when considered jointly, which should indicate changes over time/space. Calculations were performed using the PS Statistical software (SPSS Inc. 2002). To determine relationships between diversity indices and distances to the toxic spill, the Pearson product-moment correlation (Ludwig and Reynolds 1988) was applied.

### Taxonomical and Biogeographical criteria

With respect to the taxonomical treatment of the species Gebien (1937, 1938-1942a, 1942b-



**Table 3.** Dominance, Richness, Diversity and Evenness indices for each sampling period: N (species number), R1 (Margalef), R2 (Menhinick), H' (Shannon), N1 and N2 (Hill's Diversity) and E5 (Hill's Evenness)

Richness	Diversity	Evenness
<b>PICOVER</b>		
N= 12	H'= 1.124	E <sub>s</sub> = 0.3772
R1= 2.12	N <sub>1</sub> = 12.1233	Dominance
R2=0.33	N <sub>2</sub> = 5.1964	0.47
<b>SECOVER</b>		
N= 20	H'= 1.172	E <sub>s</sub> = 0.4154
R1= 2.17	N <sub>1</sub> = 13.9972	Dominance
R2= 0.81	N <sub>2</sub> = 6.3997	0.43

1948) was followed and for higher taxa (Sub-families, Tribes and Sub-tribes) Bouchard et al. (2005, 2007), Doyen (1972) and Doyen and Lawrence (1979) were used. The Holdhaus' criteria (1929) were followed when assigning the tenebrionid species to different biogeographical categories. Comparisons from a biogeographical point of view provide evidence of significant changes in the composition of the fauna in the disturbed and/or restored areas.

## Results

### Evolution of the Darkling Beetle community

Table 2 shows the species and their respective abundance corresponding to each research period, PICOVER and SECOVER. According to the results from PICOVER (Cárdenas and Hidalgo 2006), there were signs of a noticeable impoverishment of the fauna in the affected area after the disaster that was colonized at the time of this first study by only 12 species with most of them having only a scarce or accidental presence (a very low number of specimens were recorded). Only a few generalist species, *Gonocephalum rusticum*, *Scleron armatum* and *Tentyria platyceps*, were abundant in the studied zone after the accident occurred and were found to be present even in the plot where the toxic sludge was not removed. This result was also supported by the comparative biogeographical

analysis made of the fauna from the Guadamar affected area and those from the two unaffected adjacent natural areas: Sierra Morena (the northernmost boundary) and Doñana National Park (in the far south) (Cárdenas and Hidalgo 2006).

The four years from the mine accident to the end of the latest restoration program in the area, were long enough to make a comparison between the sets of data corresponding to each sampling period (PICOVER and SECOVER) to assess changes in the dark beetle fauna.

In the following phase (SECOVER) 20 species of Tenebrionidae were recorded (Table 2). It may be seen that there is a persistence of certain predominant species, *T. platyceps* and *S. armatum*, that are highly competitive in arid environments. But, together with these two, other species were also found: *G. granulatum*, a more or less ubiquitous species in the overall area, and *Pachychila hispanica*, which is also highly abundant but more dispersed in the lower reaches of the damaged area. These complete the list of better represented species in this protected space. In contrast to these, half of the listed species, whose catch data are lower than five specimens, must be considered sporadic. These results indicate that the darkling beetle community still shows a marked structural simplicity and that the diversification process is still incipient. Finally, the absence of *Blaps hispanica* and *Nalassus skopini* in the second sampling period (SECOVER) should be highlighted.

As shown in Table 3, despite the increase in the accumulated specific richness (plotted in Figure 2), the different indices that characterize the community (diversity, dominance, evenness) were quite similar when those of PICOVER and SECOVER

were compared. It can be observed, however, that as time has passed there has been a slight increase in the values of diversity and evenness and, as expected, the effect of the dominant species has decreased.

To confirm this favourable trend, the PICOVER and SECOVER communities were compared with those from the external, unaffected area, Bembézar basin. Data corresponding to the Bembézar Basin have been taken from literature (Cárdenas and Bujalance 1985). The rarefaction curves shown in Figure 3 provides a general overview: the curve of SECOVER lies in an intermediate position between the situation detected in the PICOVER (maximum alteration) and a normal situation (the unaffected basin of Bembézar).

### Characterization by sector of the Guadiamar Basin based on Tenebrionidae fauna

By analyzing in detail each of the sectors into which the area was divided in order to assess the effect of the distance from the spill (Table 4), the results indicated that the areas farthest from the toxic spill and closest to Doñana National Park show the highest level of richness and that re-colonization in the last year has increased particularly in the more disadvantaged sections downstream. This has led to a more uniform colonization of the area.

**Table 5.** Pearson product-moment correlation between diversity indices and distances to the toxic spill

PICOVER	
Sampling size	5
Pearson Correlation	-0.641
Significance level	P= 0,1894
SECOVER	
Sampling size	5
Pearson Correlation	0.2942
Significance level	P= 0,663

**Table 4.** Characterization by sector of the PICOVER and the SECOVER based on Tenebrionidae fauna (specimens number)

	Sector 1	Sector 2	Sector 3	Sector 4	Sector 5
<b>PICOVER</b>					
<i>Belopus elongatus</i>					1
<i>Tentyria platyceps</i>	10	7	116	16	1
<i>Pachychila hispanica</i>		1	5	1	5
<i>Alphitobius diaperinus</i>	1				
<i>Tribolium castaneum</i>					1
<i>Nalassus skopini</i>				1	
<i>Blaps hispanica</i>	5				
<i>Scaurus uncinus</i>				1	
<i>Litoborus planicollis</i>			3		1
<i>Gonocephalum rusticum</i>	2				6
<i>Gonocephalum granulatum</i>	2	17	53	2	113
<i>Scleron armatum</i>		12	26	19	13
<b>SECOVER</b>					
<i>Belopus elongatus</i>					1
<i>Baranormorphus tagenioides</i>			1	2	10
<i>Cnemeplatia rufa</i>	2	7	1	1	
<i>Stenosis hispanica</i>		4			10
<i>Dichillus subcostatus</i>		2		1	1
<i>Sepidium bidentatum</i>	1	6	14	17	
<i>Tentyria platyceps</i>	1397	102	30	324	75
<i>Pachychila hispanica</i>	10		30		129
<i>Palorus subdepressus</i>				1	
<i>Alphitobius laevigatus</i>	1				
<i>Alphitobius diaperinus</i>	4				
<i>Tribolium castaneum</i>			2	1	
<i>Scaurus uncinus</i>	4		1	1	4
<i>Litoborus planicollis</i>					2
<i>Opatroides thoracicus</i>		1			1
<i>Gonocephalum rusticum</i>	1				34
<i>Gonocephalum granulatum</i>	30		5	2	37
<i>Scleron armatum</i>		1	18	92	585
<i>Crypticus gibbulus</i>					3
<i>Oochrotus unicolor</i>	1	2	1		

The results also confirmed the successful expansion from Sector 5 towards the head of the basin (Sector 1). The intermediate sectors, for some time after the accident exclusively occupied by *Scleron armatum*, have already been colonized by at least ten other identified species.

The correlation coefficients calculated to assess the effect of the pollution gradient (distance from the toxic spill) on the diversity were not significant for either the PICOVER or the SECOVER datasets (Table 5).

To determine whether the effect of time has homogenised the area or, on the contrary, differences still prevail due to the distance to the toxic spill, affinity Dendrograms were constructed (Figures 4 and 5). The graphs did



**Table 6.** Percentage of each biogeographical element of Tenebrionidae in the affected area (PICOVER and SECOVER) and in the adjacent areas (Doñana National Park and Sierra Morena)

Biogeographical category	PICOVER	SECOVER	DONANA N.P.	SIERRA MORENA
Palaearctic				5.3
Mediterranean	16.6	20	12.5	5.3
Occidental-Mediterranean	16.6	10	12.5	10.5
Occidental-European		5		
Eurasian	8.3	5		5.3
South Iberian-Maghrebi	8.3	15		10.5
Iberian	16.6	10	75	57.9
South Iberian (Betic)	16.6	5		5.36
Cosmopolitan	16.6	30		

not show a clear trend of association for the PICOVER and SECOVER sectors when they are considered independently.

The most noticeable result is the clear segregation of the sector closest to the mining spill (Sector 1) in the SECOVER phase, but this is not observed in the initial period of the PICOVER study. If the sectors in SECOVER and PICOVER are jointly considered (Figure 6), the dendrogram reveals that sectors 1 and 5 in the SECOVER phase are clearly isolated from the rest because they show the most extreme and opposite trends in the recovery process. The remaining sectors (2, 3 and 4) from the different phases of the study constitute a heterogeneous affinity group, with no clear trends of association.

### Biogeographical analysis

It is generally assumed that the ecological status of fauna in a territory can be investigated on a mesoscale by the biogeographical analysis of its elements (Vargas 1993; Davis and Scholtz 2001) and that the term “biogeographical element” refers to the taxonomic units that are characteristic of this territory. Based on these assertions, a comparative biogeographical analysis of the different research areas was also performed.

The percentage corresponding to different biogeographical categories for the darkling beetle from each research period (PICOVER

**Table 7.** Course of the Tenebrionidae fauna in the plot PT where toxic sludge was not removed after the spill

TENEBRIONIDAE	INITIAL PHASE	PICOVER	SECOVER	SECOVER	SECOVER
	2000 <sup>a</sup>	2002	2004	2005	2006
<i>Pachychila hispanica</i>		5	43	38	16
<i>Tentyria platyceps</i>		116	1	62	5
<i>Dichillus subcostatus</i>					1
<i>Stenosis hispanica</i>			2	1	
<i>Gonocephalum granulatum</i>		53	10	5	3
<i>Scleron armatum</i>		26	156	67	11
<i>Litoborus planicollis</i>		3	1		
<i>Belopus elongatus</i>			1		
<i>Boromorpha tegeioides</i>				2	

<sup>a</sup> No Tenebrionidae were present 2 years after the toxic spill

and SECOVER) and data from the adjacent natural unaffected areas, Doñana National Park (Cárdenas and Hidalgo 2006), and the Sierra Morena Mountains (Cárdenas and Bujalance 1985) are shown in Table 6.

From a chorological point of view, noticeable differences are observed between the fauna of affected and unaffected zones: while in Doñana park and Sierra Morena mountains endemisms predominate, with a fairly restricted distribution (Iberian or South Iberian), in the area under study the components with a wide distribution (cosmopolitan or Mediterranean) have a higher significance. It is also remarkable that the proportion of cosmopolitan species was double in SECOVER compared to PICOVER, to the detriment of either the betic or iberian species.

### Evolution of the Tenebrionidae Fauna in the toxic Plot

To determine the persistent effect of the toxic sludge, a detailed study on the temporal evolution of the Tenebrionidae fauna throughout all the phases of the study was also made. Data related to this aspect are shown in Table 7. In the initial phase of the study two years after the spill, the negative impact of the spill on the fauna of this plot was so severe that no darkling beetles were recorded. Later, the species number and the abundance values gradually rose until the end of 2004. From then, a gradual decrease, more evident in

terms of abundance than in diversity was observed.

## Discussion

The above results provide enough information to assess the evolution of Tenebrionidae fauna after the toxic spill occurred and the restoration plan was implemented. For this research we assumed that faunistic data (qualitative and quantitative) of Tenebrionidae, that are considered to be a bioindicator group (Fávila and Halffter 1997; Cartagena and Galante 2001a, b; Cartagena 2002) within a defined habitat, enable the structure and dynamic of communities to be studied, and the impact of drastic disturbances on them to be evaluated (Southwood 1991). In practical studies, to assess biodiversity and to propose strategies towards conservation, supplementary information such as the specific richness or the endemic condition of the species must also be considered (Jaarveld et al. 1998). Therefore, the conclusions of this study are based on the comparative analysis of the indices that characterize the darkling beetle communities and their respective biogeographical composition.

An overview of the results shows that the tenebrionid populations studied around the Guadiamar River do not differ significantly from those of well-preserved natural areas like the Doñana National Park and Sierra Morena Mountains. This result was also supported by observing the respective rarefaction curves, which suggested that the accident initially had a low impact on the persistent darkling beetle populations. Similar results have also been obtained for other components of the epigeal fauna (Cárdenas and Hidalgo 2006, 2007).

However, a detailed analysis of the stations closest to the river and, hence,

more affected by the spill, revealed an environmental heterogeneity manifested in poorness and structural simplicity of the fauna, a process which becomes increasingly more evident closer to the site of the toxic spill. A similar gradient has also been found by Solà et al. (2003) for the fresh-water macro-invertebrates, for the amphibian communities by Tejedo and Reques (2003) from the Guadiamar River and for other coleopteran edaphic communities (Cárdenas and Hidalgo *op. cit.*).

Certain generalist species including *Gonocephalum rusticum*, *Scleron armatum* and *Tentyria platyceps* are not only present in the sampling plots but they are also abundant in places where the toxic sludge remains. These are species with a high environmental plasticity, capable of colonizing environments that other species are unable to tolerate. Because they are wingless, and have low dispersal ability they may have survived by taking refuge during the clean-up operations in the few areas where soil had not been removed. These ubiquitous species would then be the first agents for the re-colonization of the rehabilitated area. In the affinity analysis, the darkling beetle communities from Guadiamar and Doñana were closely linked to the studied sites because of their high proportion of common species belonging to the genera *Tentyria*, *Gonocephalum* and *Pimelia*, which share a thermo-xerophilous condition and preference for sandy substrates (Thomas 1983; Dajoz 2002).

The disappearance of some species in SECOVER with respect to PICOVER, such as *Blaps hispanica*, could be explained by the peculiar biology of the species belonging to

this genus (Crovetti et al. 1979): 1) The long life cycle of both the larval (hypogean) and imaginal stages, that may last more than ten years in some cases (Viñolas and Cartagena 2005), and 2) Their phenology characterized by maximal activity during the spring and summer (Cartagena and Galante 2003) which coincided with the time when the mining accident occurred (April 25). In addition, being wingless, large, having low mobility and highly defined ecological requirements (particularly the vegetation) may explain their absence. The five adults of *Blaps hispanica* recorded during the PICOVER sampling could be explained as part of a residual population, heavily depleted after the ecological disaster. The absence of *Nalassus skopini* could be understood because it is a sporadic species, and so, its presence at the beginning of the study could have been merely casual.

On the other hand, biogeographical analysis reveals that the current composition of the darkling beetles community in the Guadiamar had undergone significant changes in comparison to external areas (Sierra Morena Mountains and Doñana Natural Park), although the Mediterranean component continues to be important. Furthermore, in SECOVER there is a proliferation of species with a worldwide distribution and a scarcity of elements with a more restricted distribution (mostly Iberian endemism). This could be interpreted as the accident mostly having affected the autochthonous fauna, which is always more sensitive to alterations in habitat. During the early stages of re-colonization, new opportunistic or introduced species arrived to the area, which explains the increase of the cosmopolitan element in the second period of the study.

With respect to the evolution of tenebrionids in the toxic plot, the high sensitivity of this group of insects to soil disturbance and their limited dispersal ability justifies their absence in the initial phase of the study. During the cleaning up operation (sludge removal) and the later reforestation phase, this plot offered greater stability and higher environmental humidity becoming "an area of temporary refuge". Possibly this was the reason for an increase in representation of the species up to 2004, when the highest values of abundance were recorded. From then on, a gradual decline occurred that was more evident in terms of abundance than in diversity. Clearly, with time the surrounding areas have stabilized and, in parallel the negative effect of metal contamination has been accumulating, the toxic plot has become impoverished, retaining only reduced populations of some generalist species and other accidental species.

In short, analysing the evolution of the Tenebrionidae fauna, it can be stated that the Guadiamar basin is experiencing a slow process of regeneration. Perhaps, this process is being manifested slowly due to the intimate relationship between these beetle species and the soil. This is compounded by the hypogean nature of the preimaginal phases in many species, which makes them very sensitive to soil contamination. Furthermore, their limited dispersal ability, compared to other groups, has also slowed the re-colonization of the area; this should however become consolidated in the longer term.

### Acknowledgements

This research has been financed by the Project: "Seguimiento ecorregional de las comunidades de Coleópteros edáficos del Corredor Verde del Guadiamar". Consejería

de Medio Ambiente. Junta de Andalucía, Spain.

## References

Anguas JM, Carmona JJ, Isendahl, N Robles P, Schmidt G. 2002. *Directorio de organizaciones ambientales de la comarca de Doñana*. Ed. WWF/ADENA. Madrid Spain

Bouchard P, Lawrence JF, Davies AE, Newton AF. 2005. Synoptic Classification Of The World Tenebrionidae (Insecta: Coleoptera) With A Review Of Family-Group Names. *Annales Zoologici Fennici* 55(4):499-530

Bouchard P, Löbl I, Merkl O. 2007. Nomenclatural notes on Tenebrionid beetles of the Palaearctic region (Insecta: Coleoptera). *Annales Zoologici Fennici* 57(3):385-394

Bujalance JL. 2008. *Evaluación del impacto del vertido minero de Aznalcóllar sobre las comunidades de coleópteros Tenebriónidos y del posterior proceso de restauración de la zona*. Memoria de Actividad Investigadora. Bienio 2006-08. Universidad de Córdoba. Programa de Doctorado “Ciencias Aplicadas”

Cárdenas AM, Bach C. 1988a. Contribución al conocimiento de los Carábidos (Col. Carabidae) de Sierra Morena Central. 1ª Parte. *Boletín de la Asociación española de Entomología* 12:9-25

Cárdenas AM, Bach C. 1988b. Estudio de la comunidad de Carábidos de la Sierra de Hornachuelos. *Stydia Oecologica* 5:335-351.

Cárdenas AM, Bach C. 1989 a. Contribución al conocimiento de los Carábidos (Col. Carabidae) de Sierra Morena Central. 2ª Parte. *Boletín de la Asociación española de Entomología* 13:9-19

Cárdenas AM, Bach C. 1989 b. The effect of some abiotic factors on the distribution and selection of habitat by the Carabid Beetles in the Central Sierra Morena Mountains (SW Córdoba, Spain). *Vie Milieu* 39(2):93-103.

Cárdenas AM, Bujalance JL. 1985. Sobre los Tenebrionidae de los alrededores del embalse del Bembézar. *Boletim da Sociedade Portuguesa de Entomologia* 3:497-506

Cárdenas AM, Hidalgo JM. 2006. Ecological impact assessment of the Aznalcóllar mine toxic spill on edaphic coleopteran communities in the Guadiamar River basin (Southern Iberian Peninsula). *Biodiversity and Conservation* 15:361-383

Cárdenas AM, Hidalgo JM. 2007. Application of the mean individual biomass (MIB) of ground beetles (Coleoptera: Carabidae) to assess the recovery process of the Guadiamar Green Corridor (southern Iberian Peninsula). *Biodiversity and Conservation* 16 (14):4131-4146

Cartagena MC. 2002. Medidas del estado de conservación de los ecosistemas insulares a través de la utilización de los coleópteros Tenebriónidos (Coleoptera: Tenebrionidae). *Boletín de la Asociación española de Entomología* 26(1-2):177-192

Cartagena MC, Galante E. 2001a. Ecología de *Tentyria laevis* Solier, 1835 y *T. peiroleri* Solier, 1835 (Coleoptera, Tenebrionidae, Tentyriini). *Butlletí de la Institució Catalana d'Historia Natural* 11:25-34

Cartagena MC, Galante E. 2001b. Los tenebriónidos (Coleoptera, Tenebrionidae) de los pastizales vivaces semiáridos. *Reunión científica de la Sociedad Española para el Estudio de Pastos* XLI:267-274

- Cartagena MC, Galante E. 2003. Ecología del género *Blaps* Fabricius, 1775 en el sudeste Ibérico (Coleoptera, Tenebrionidae). *Butlletí de la Institució Catalana d'Historia Natural* 12:43-53
- Castro H. 2003. Environmental connectivity and conservation in the Mediterranean Basin: In: *Environmental Connectivity: Protected areas in the Mediterranean basin*. Dirección General de la RENPO. Consejería de medio Ambiente. Junta de Andalucía. Sevilla.
- Crawford CS. 1979. Desert detritivores: a review of life history patterns and trophic rôles. *Journal of Arid Environments* 2:31–42
- Crawford CS. 1991. The community ecology of macroarthropod detritivores. In: Polis GA, editor. *The Ecology of Desert Communities*, The University of Arizona Press
- Crawford CS, Taylor JL. 1984. Decomposition in arid environments: role of the detritivore gut. *South African Journal of Science* 80:170-176
- Crovetti A, Quaglia F, Raspi A, Belcari A, Paparatti B. 1979. Limit termici e temperature ottimali di *Blaps mucronata* Latr. (Col. Tenebrionidae). *Frustula Entomologica* 2:139–149
- Dajoz R. 2002. *Les Coléoptères Carabidés et Ténébrionidés*. Lavoisier Publishing Inc.
- Davis ALV, Scholtz CH. 2001. Historical versus ecological factors influencing global patterns of Scarabaeine dung beetle diversity. *Diversity and Distributions* 7:161-174
- Doyen JT . 1972. Familial and Subfamilial classification of the Tenebrionoidea (Coleoptera) and a revised generic classification of the Coniontini (Tentyriidae). *Quaestiones entomologicae* 8:357-376
- Doyen JT, Lawrence JF. 1979. Relationships and higher classification of some Tenebrionidae and Zopheridae (Coleoptera). *Systematic Entomology* 4:333-377
- Favila ME, Halffter G (1997) The use of indicator groups for measuring biodiversity as related to community structure and function. *Acta Zoologica Mexicana* (n.s.) 72:1-25
- Fenologio S., Cucco M., Bo t., Gay P., Malacarne G. 2007. Colonization by ground and edaphic invertebrates of soil patches with different pollution levels. *Periodicum Biologorum*, 109: 37-45
- García-Canseco V (ed) .2002. *Parque Nacional de Doñana*. Talavera de la Reina, Spain
- García MR, Montes C. 2003. *Linkages in the Mediterranean landscape: the role of protected areas in the territorial context*. Consejería de Medio Ambiente, Junta de Andalucía
- Gebien H. 1937. *Katalog der Tenebrioniden (Col. Heteromera) Teil I*. Pubblicazioni del Museo Entomologico “Pietro Rossi” Duino 2:505–883
- Gebien H. 1938/42. Katalog der Tenebrioniden (Col. Heteromera) Teil II. *Mitteilungen der Münchner Entomologischen Gesellschaft*, 28 (1938): 283–428 [370–465], 29 (1939): 443–474, 739–770 [466–529], 30 (1940): 405–436, 755–786, 1061–1092 [530–625], 31 (1941): 331–362, 803–834, 1137–1146 [626–705], 32 (1942a): 308–346 [706–744]
- Gebien H. 1942b/48. Katalog der Tenebrioniden (Col. Heteromera) Teil III. *Mitteilungen der Münchner Entomologischen Gesellschaft*, 32 (1942b): 729–760 [746–777],

33 (1943): 339–430, 895–926 [778–841], 34 (1948 [1944]): 497–555 [842–899]

Grümm L. 1980. Methods of approximate estimation of energy flow through carabid populations. *Ekologia Polska* 28 (1): 129–149

Henderson PA. 2003. *Practical Methods in ecology*. Blackwell.

Holdhaus K. 1929. Die geographische Verbreitung der Insekten. *Schröder Handbuch Entomologie* 2:592–1058

Hurlbert SH. 1971. The non-concept of species diversity: A critique and alternative parameters. *Ecology* 52: 577–586

Jaarsveld van AS, Freitag S, Chown SL, Muller C, Koch S, Hull H, Bellamy C, Krüger M, Endrödy-Younga S, Mansell M W, Scholtz L. 1998. *Biodiversity assessment and conservation strategies*. *Science* 279: 2106–2108.

Lavelle P, Bignell D E, Lepage M, Wolters V, Roger P, Ineson P, Heal OW, Dhillion S. 1997. Soil function in a changing world: the role of invertebrate ecosystem engineers. *European Journal of Soil Biology* 33: 159–193

Ludwig JA, Reynolds JF. 1988. *Statistical Ecology*. John Wiley & Sons.

Lyons NI. 1981. Comparing diversity indices based on counts weighted by biomass or other importance values. *American Naturalist* 118:438–442

Marvizón-Preney J and Fernández-Caro J. 1981. *Clasificación climática de Andalucía*. *Enciclopedia de Andalucía II*. Ed. Anel. S.A. Sevilla.

Montes C. 1999. Corredores ecológicos. El Corredor Verde del Guadiamar: Conexión

entre espacios naturales. *Medioambiente* 31:48–53

Montes C, Arenas J M, Borja F. 2003. Iniciativa científico técnica del PICOVER. In PICOVER, *Ciencia y Restauración del Río Guadiamar*: 14 - 41. Junta de Andalucía. Consejería de Medio Ambiente. Sevilla

Montes C, Carrascal F. 2008. *La restauración ecológica del río Guadiamar y el Proyecto del Corredor Verde: la historia de un paisaje emergente* (ed.) Dirección General de espacios naturales protegidos y servicios ambientales. Consejería de Medio Ambiente. Junta de Andalucía. Sevilla

PICOVER. 2003. *Ciencia y Restauración del Río Guadiamar*. Junta de Andalucía. Consejería de Medio Ambiente, Sevilla

SPSS Inc. 2002. *SPSS 12.0 for Windows Use Manual* (version 12.0)

Santos de los A. 1983. *Biología y ecología de dos comunidades mediterráneas de coleópteros de superficie*. Ph.D. Thesis, University of Murcia.

Santos A de los, Alonso EJ, Hernández E, Pérez AM. 2002. Environmental correlates of darkling beetle population size (Col. Tenebrionidae) on the Cañadas of Teide in Tenerife (Canary Islands). *Journal of Arid Environments* 50:287–308

Santos A. de los, Montes C. and Ramirez L. 1982. Modelos espaciales de algunas poblaciones de coleópteros terrestres en dos ecosistemas del bajo Guadalquivir (S.W. España). *Mediterranea Serie Biologica* 6:65–92

Solà C, Plans M, Prat N. 2003. Los macroinvertebrados de los ríos Agrío y Guadiamar: evolución de la comunidad,



concentración de metales y toxicidad. In: Montes C, Borja F, Arenas JM, Fraile P, Moreiras, editors. *JM Programa de Investigación del Corredor Verde del Guadiamar*. Consejería de Medio Ambiente, Junta de Andalucía, Sevilla

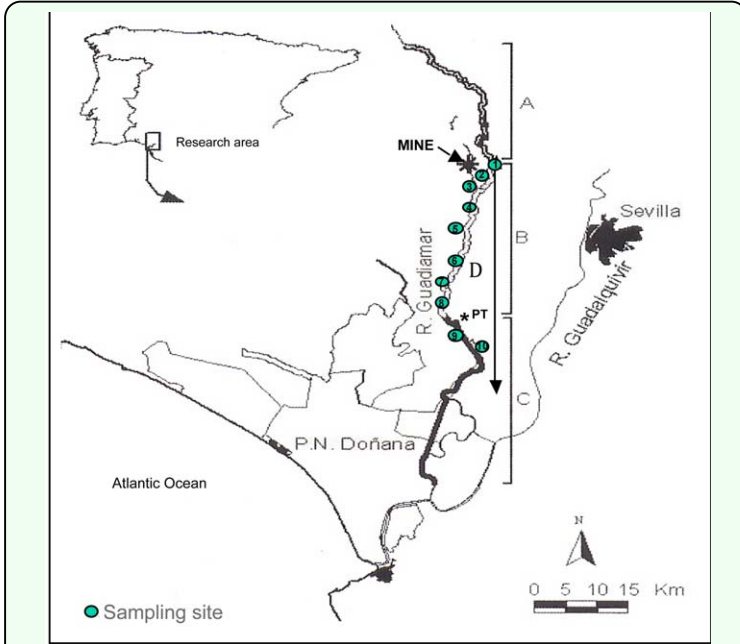
Southwood TRE (1991) *Ecological Methods, with particular reference to the study of insect populations*. Chapman and Hall.

Tejedo M, Reques R. 2003. Evaluación de los efectos del vertido tóxico en las minas de Aznalcóllar sobre la comunidad de anfibios del río Guadiamar. In (coods) Montes C, Borja F, Arenas JM, Fraile P, Moreiras JM. *Programa de Investigación del Corredor Verde del Guadiamar*. Consejería de Medio Ambiente. Junta de Andalucía. Sevilla

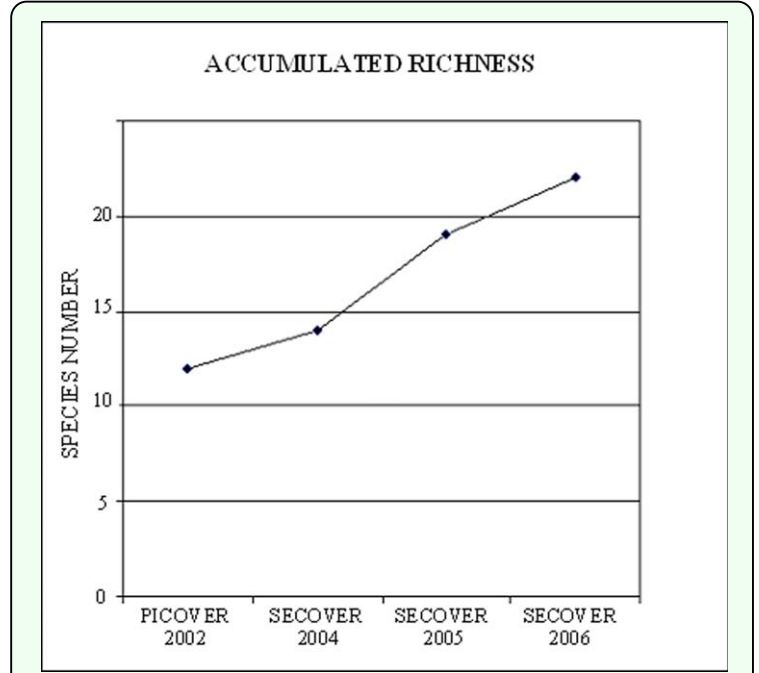
Thomas DB. 1983. Tenebrionid beetle diversity and habitat complexity in the eastern Mojave desert. *Coleoptera Bulletin* 37:135-147

Vargas JM. 1993. Siete pecados capitales en Biogeografía. *Zoologica Baetica* 4:39-56

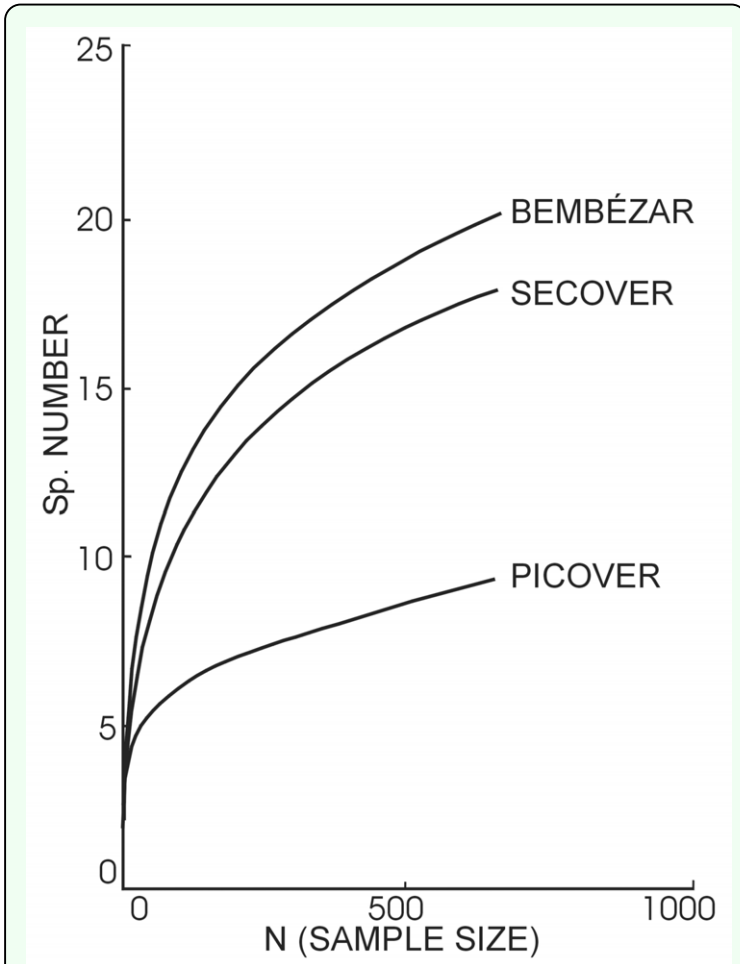
Viñolas A, Cartagena M C. 2005. *Fauna de Tenebriónidos de la Península Ibérica y Baleares, vol.1. Lagriinae y Pimeliinae*. Argania Editio. Barcelona



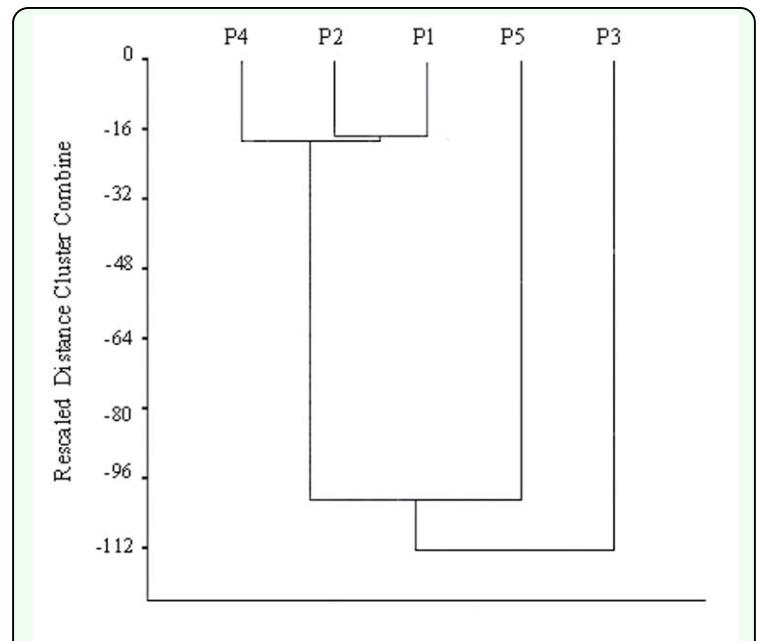
**Figure 1.** Map of the research area. A Upper reaches, B: medium reaches, C: lower reaches and D: Damaged area (from Cárdenas and Hidalgo 2006). High quality figures are available online.



**Figure 2.** Accumulated richness in the research area. High quality figures are available online.



**Figure 3.** Rarefaction curves obtained for the three considered communities. High quality figures are available online.



**Figure 4.** Dendrogram of species clustering of the sectors from PICOVER. High quality figures are available online.

