

Inhibitory Effect of Gut Bacteria from the Japanese Honey Bee, *Apis cerana japonica*, Against *Melissococcus plutonius*, the Causal Agent of European Foulbrood Disease

Authors: Wu, Meihua, Sugimura, Yuya, Iwata, Kyoko, Takaya, Noriko, Takamatsu, Daisuke, et al.

Source: Journal of Insect Science, 14(129) : 1-13

Published By: Entomological Society of America

URL: <https://doi.org/10.1673/031.014.129>

BioOne Complete (complete.BioOne.org) is a full-text database of 200 subscribed and open-access titles in the biological, ecological, and environmental sciences published by nonprofit societies, associations, museums, institutions, and presses.

Your use of this PDF, the BioOne Complete website, and all posted and associated content indicates your acceptance of BioOne's Terms of Use, available at www.bioone.org/terms-of-use.

Usage of BioOne Complete content is strictly limited to personal, educational, and non - commercial use. Commercial inquiries or rights and permissions requests should be directed to the individual publisher as copyright holder.

BioOne sees sustainable scholarly publishing as an inherently collaborative enterprise connecting authors, nonprofit publishers, academic institutions, research libraries, and research funders in the common goal of maximizing access to critical research.



Inhibitory effect of gut bacteria from the Japanese honey bee, *Apis cerana japonica*, against *Melissococcus plutonius*, the causal agent of European foulbrood disease

Meihua Wu,^{1,3a*} Yuya Sugimura,¹ Kyoko Iwata,¹ Noriko Takaya,¹ Daisuke Takamatsu,^{2,5} Masaru Kobayashi,⁴ DeMar Taylor,³ Kiyoshi Kimura,^{1,3} and Mikio Yoshiyama¹

¹Honey Bee Research Unit, Animal Breeding and Reproduction Research Division, National Institute of Livestock and Grassland Science, NARO, 2 Ikenodai, Tsukuba, Ibaraki 305-0901, Japan

²Bacterial and Parasitic Diseases Research Division, National Institute of Animal Health, NARO, 3-1-5 Kannondai, Tsukuba, Ibaraki 305-0856, Japan

³Graduate School of Life and Environmental Sciences, University of Tsukuba, 1-1-1 Tennodai, Tsukuba, Ibaraki 305-8572, Japan

⁴Technical Services for Diagnosis, Diagnostic Section, Center for Animal Disease Control and Prevention, National Institute of Animal Health, NARO, 3-1-5 Kannondai, Tsukuba, Ibaraki 305-0856, Japan

⁵The United Graduate School of Veterinary Sciences, Gifu University, Gifu, Gifu 501-1193, Japan

Abstract

European foulbrood is a contagious bacterial disease of honey bee larvae. Studies have shown that the intestinal bacteria of insects, including honey bees, act as probiotic organisms. Microbial flora from the gut of the Japanese honey bee, *Apis cerana japonica* F. (Hymenoptera: Apidae), were characterized and evaluated for their potential to inhibit the growth of *Melissococcus plutonius* corrig. (ex White) Bailey and Collins (Lactobacillales: Enterococcaceae), the causative agent of European foulbrood. Analysis of *16S rRNA* gene sequences from 17 bacterial strains isolated by using a culture-dependent method revealed that most isolates belonged to *Bacillus*, *Staphylococcus*, and *Pantoea*. The isolates were screened against the pathogenic bacterium *M. plutonius* by using an in vitro growth inhibition assay, and one isolate (Acja3) belonging to the genus *Bacillus* exhibited inhibitory activity against *M. plutonius*. In addition, in vivo feeding assays revealed that isolate Acja3 decreased the mortality of honey bee larvae infected with *M. plutonius*, suggesting that this bacterial strain could potentially be used as a probiotic agent against European foulbrood.

Keywords: microbial flora, honey bee disease, probiotic

Correspondence: ^a tanghis.wu@gmail.com, *Corresponding author

Editor: Thomas Miller was editor of this paper.

Received: 1 October 2012 **Accepted:** 2 May 2013 **Published:** 15 September 2014

Copyright: This is an open access paper. We use the Creative Commons Attribution 3.0 license that permits unrestricted use, provided that the paper is properly attributed.

ISSN: 1536-2442 | Vol. 14, Number 129

Cite this paper as:

Wu M, Sugimura Y, Iwata K, Takaya N, Takamatsu D, Kobayashi M, Taylor D, Kimura K, Yoshiyama M. 2014. Inhibitory effect of gut bacteria from the Japanese honey bee, *Apis cerana japonica*, against *Melissococcus plutonius*, the causal agent of European foulbrood disease. *Journal of Insect Science* 14(129). Available online: <http://www.insectscience.org/14.129>

Introduction

European honey bees (*Apis mellifera* L. (Hymenoptera: Apidae)) play a critical role in human well-being, not only through the provision of honey but also by pollinating a great variety of crop plants. Fifty-two of the 115 most common global food commodities depend on honey bee pollination to produce fruit and seeds (Klein et al. 2007). In addition, the value of agricultural products derived from plants pollinated by honey bees is estimated to be around \$15 billion per year in the U.S. alone (Morse and Calderone 2000). Consequently, the marked deterioration in the colony health of managed honey bee hives has become a major concern in many countries around the world in recent years (vanEngelsdorp and Meixner 2010). One of the major reasons for this decline is considered to be the combined effect of several honey bee diseases (Genersch 2010).

European foulbrood is a serious disease of honey bee larvae that is caused by the Gram-positive bacterium *Melissococcus plutonius* corrig. (ex White) Bailey and Collins (Lactobacillales: Enterococcaceae) (Bailey and Collins 1982, Bailey 1983, Forsgren et al. 2005). This infectious and contagious bacterial disease has caused extensive damage to the global apiculture industry (Belloy et al. 2007, Forsgren 2010). Current control measures for the disease consist of treatment with antibiotics, such as oxytetracycline hydrochloride, which inhibits *M. plutonius* replication (Thompson and Brown 2001). However, the use of antibiotics in apiculture is a major concern, not only because humans will consume antibiotic residues in the resulting honey bee products (Mutinelli 2003), but also because these antibiotics are toxic to honey bee broods (Pettis et al. 2004, Thompson et al. 2005) and beneficial honey bee microflora (Vasquez et

al. 2012). The emergence of oxytetracycline-resistant strains of *Paenibacillus larvae* (White) (Bacillales: Paenibacillaceae), the etiological agent of American foulbrood, has also become a serious problem (Miyagi et al. 2000). In combination, these factors have contributed to a general decrease in the use of antibiotics in apiculture and even a ban in the European Union (de Graaf et al. 2006). There is thus an urgent need to develop novel and alternative disease management techniques for controlling European foulbrood.

As in other animals, the gastrointestinal tract of honey bees is a complex ecosystem that harbors a diverse array of microbial communities (Gilliam 1997, Martinson et al. 2011). Studies have demonstrated that bacterial probiotics can induce an immune response (Evans and Lopez 2004) and contribute toward maintaining a healthy bee colony (Pătruică and Mot 2012). Consequently, gastrointestinal bacteria have received considerable interest for their potential application as alternative disease control agents in apiculture. Several attempts to isolate bacteria from honey and honey bee guts have been undertaken in the search for probiotic agents against *P. larvae* (Alippi and Reynaldi 2006, Audisio et al. 2011) and *Ascosphaera apis* (Maasen ex Claussen) L.S. Olive & Spiltoir (Ascosphaerales: Ascosphaeraceae), which causes chalkbrood disease (Reynaldi et al. 2004).

A recent study reported that lactic acid bacteria isolated from honey bees exhibited antagonistic effects toward *M. plutonius* (Vasquez et al. 2012). However, European foulbrood has not yet been systematically studied, and the pathogenic mechanisms of the disease are currently poorly understood, primarily due to difficulties associated with artificially culturing *M. plutonius* and con-

ducting European foulbrood experiments under laboratory conditions (McKee et al. 2004). However, several of the *M. plutonius* strains that have recently been isolated and artificially cultured have induced high mortalities and European foulbrood symptoms in honey bee larvae raised in vitro (Arai et al. 2012). These findings have enabled us to examine the control of European foulbrood more closely and to assess the efficacy of using intestinal probiotics in novel disease management strategies.

The Japanese honey bee, *Apis cerana japonica* F. (Hymenoptera: Apidae), a subspecies of the Asian honey bee, is native to Japan. Bacteria isolated from the gut of a Japanese honey bee were shown to inhibit *P. larvae* growth (Yoshiyama and Kimura 2009). Compared with *A. mellifera*, *A. cerana* is considered to be resistant to a variety of pathogens, including American foulbrood and *Varroa* mites (Peng et al. 1987, Chen et al. 2000). As a result, this honey bee species is considered to be well suited for use as a potential source of probiotic gut bacteria that confer a tolerance to a variety of honey bee pathogens. The objective of this study was therefore to isolate bacteria from the intestinal tract of the Japanese honey bee, *A. c. japonica*, and to evaluate their antagonistic effects on *M. plutonius*. The results revealed that one of the isolates, Acja3, exhibited anti-*M. plutonius* activity in *A. mellifera*.

Materials and Methods

Collection of *A. c. japonica* and Isolation of Gut Bacteria

Colonies of *A. c. japonica* were reared in wooden hives in an apiary at the Honey Bee Research Unit at the National Institute of Livestock and Grassland Science in Tsukuba, Japan. Foragers of *A. c. japonica* were collected from three different colonies in July

2011. Ten returning workers from each colony were caught at hive entrances by using forceps and transferred to 1.5 ml tubes. The external surface of the forager bees was sterilized with 70% ethanol and washed with distilled water. The digestive tracts were then dissected aseptically before being homogenized in tubes containing Brain Heart Infusion (BHI) liquid medium (Difco, Detroit, MI). Gut homogenates were then plated on BHI agar plates and incubated aerobically at 35°C for 48 h. Bacterial colonies were selected according to size, color and morphological appearance.

DNA Sequencing of *16S rRNA* Genes

The *16S rRNA* genes of all isolates were amplified by PCR with 27F (5'-AGA GTT TGA TCC TGG CTC AG-3') and 1406R (5'-ACG GGC GGT GTG TAC-3') primers (Weisburg et al. 1991). Polymerase chain reactions (50 µL) contained 1 U of KOD-Plus-DNA polymerase (Toyobo, Osaka, Japan) with 1× PCR buffer (1.5 mM MgCl₂), 0.2 mM of dNTPs, and 0.5 µM of each primer. The PCR cycle consisted of an initial denaturation at 95°C for 2 min, followed by 35 cycles of denaturation at 95°C for 1 min, annealing at 60°C for 1 min, and extension at 68°C for 1 min. After separating the fragments on a 1.2% agarose gel, PCR products were extracted using a Qiaex II Gel Extraction Kit (Qiagen, Germantown, MD) before cloning into a pGEM-T Easy Vector (Promega, Madison, WI). Ligation mixture was then transformed into One Shot[®] TOP10 *E. coli* (Invitrogen, Carlsbad, CA) according to the manufacturer's instructions. Plasmid DNA was purified using a QIAprep Miniprep Kit (Qiagen). Sequencing was performed using a BigDye Terminator Cycle Sequencing Kit (Applied Biosystems, Carlsbad, CA) in combination with an automated sequencing system (Model ABI 3730, Applied Biosystems).

Sequence and Phylogenetic Analyses

Similarities between the *16S rRNA* genes obtained in this study and published sequences were determined using the BLAST program at the National Centre for Biotechnology Information (NCBI) database (www.ncbi.nlm.nih.gov/BLAST). Phylogenetic relationships were estimated by performing nucleotide sequence alignments with CLUSTALX (www.clustal.org) and analysis with the neighbor joining (NJ) algorithm implemented in NJplot (<http://doua.prabi.fr/software/njplot>) (bootstrap value: 1,000).

Biochemical Analysis

All bacterial isolates were characterized using an API 50CH Biochemical Kit (BioMerieux, Marcy l'Etoile, France) in combination with API 50CHB/E medium. Pure bacterial colonies from each plate were suspended in 100 μ L sterile distilled water and mixed with API 50CHB/E medium. The medium inoculated with each suspension was then incubated in API 50CH strips at 35°C. Changes in color were recorded after 24 or 48 h according to the manufacturer's instructions.

In Vitro Inhibition Assays for *M. plutonius*

Inhibitory activities of each isolate were assayed against the *M. plutonius* DAT561 strain, which exhibited virulence in larvae reared in vitro (Arai et al. 2012), by using a modification of a previously described diffusion technique (Alippi and Reynaldi 2006). The *M. plutonius* DAT561 strain was cultured in KSBHI medium (BHI medium plus 0.15 M KH_2PO_4 and 1% soluble starch) for 5 d at 35°C under anaerobic conditions in an AnearoPack System (Mitsubishi Gas Chemical Co. Inc., Tokyo, Japan). Bacterial lawns of *M. plutonius* (500 μ L) were prepared on the KSBHI agar plates. Each gut bacterial isolate that had been cultured on BHI agar plates was

then suspended in BHI liquid medium, and the OD_{600} was adjusted to 1.0. A sheet of filter paper (7 mm diameter) was then impregnated with each suspension (10 μ L) of gut bacteria and placed on the plate with the *M. plutonius* lawn. The plates were then incubated at 35°C under anaerobic conditions for 3 d. The diameters of the inhibition zones were then measured, and the mean \pm SD was calculated based on three independent experiments. BHI liquid medium was used as a negative control, and tetracycline (10 μ g/mL) was used as a positive control.

In Vivo Infectious Feeding Assays with *A. mellifera* Larvae

Larvae were collected from *A. mellifera* colonies maintained by the Honey Bee Research Unit in Tsukuba, Japan. The protocol employed for in vitro larval rearing followed the methods of Aupinel et al. (2005) with some modifications. A queen was confined in an excluder cage for 1 d, and larvae (< 24 h old) were collected from the colony on the fourth day. First-instar larvae were grafted and transferred to an artificial diet in a 24-well cell culture plate. The culture plates were kept in a plastic box and incubated at 35°C and a relative humidity of 90%. The artificial larval diet consisted of royal jelly (50%), water (37%), D-glucose (6%), D-fructose (6%), and yeast extract (1%). Larvae of experimental groups were pre-fed 50% sucrose water mixed with the same volume of a bacterial suspension of Acja3 (ca. 1×10^7 cfu/mL), or a cell-free supernatant of Acja3 prepared from 48-h-incubated culture medium. Larvae of control groups were fed 50% sucrose water only. After 6 h, larvae in all of the groups, except the control group, were infected with *M. plutonius* DAT561 strain (ca. 1×10^7 cfu/mL) through their normal artificial diet. Twenty-four hours after infection with *M. plutonius*, normal artificial diet was supplied for the remainder of

Table 1. Diversity of bacterial isolates from the gut of *A. c. japonica*

| Name | Acc. No. | Closest relative in GenBank | Bacterial division | Similarity |
|-------|----------|--|--------------------------------------|------------|
| Acja1 | AB668062 | <i>Bacillus cereus</i> strain TAUC5 (HQ914780) | Firmicutes; <i>Bacillus</i> | 99% |
| Acja2 | AB668063 | <i>Staphylococcus sciuri</i> strain CTSP9 (EU855191) | Firmicutes; <i>Staphylococcus</i> | 99% |
| Acja3 | AB668064 | <i>Bacillus subtilis</i> strain A97 (AB501113) | Firmicutes; <i>Bacillus</i> | 99% |
| Acja4 | AB668065 | <i>Staphylococcus sciuri</i> strain CTSP9 (EU855191) | Firmicutes; <i>Staphylococcus</i> | 99% |
| Acja5 | AB668066 | <i>Lysinibacillus</i> sp. PCSAS2-35 (GQ284494) | Firmicutes; <i>Lysinibacillus</i> | 100% |
| Acjb1 | AB668067 | Bacillaceae bacterium GYPB05 (JF346888) | Firmicutes; unclassified Bacillaceae | 99% |
| Acjb2 | AB668068 | <i>Bacillus cereus</i> strain Aj0803191A-16 (HQ727973) | Firmicutes; <i>Bacillus</i> | 100% |
| Acjc1 | AB668069 | <i>Bacillus cereus</i> biovar anthracis str. CI (CP001746) | Firmicutes; <i>Bacillus</i> | 99% |
| Acjc2 | AB668070 | <i>Bacillus cereus</i> strain TAUC5 (HQ914780) | Firmicutes; <i>Bacillus</i> | 100% |
| Acjc3 | AB668071 | <i>Bacillus cereus</i> strain G8639 (AY138271) | Firmicutes; <i>Bacillus</i> | 99% |
| Acjc4 | AB668072 | Uncultured Xanthomonadales bacterium (HM798689) | Proteobacteria; Gammaproteobacteria | 99% |
| Acjc5 | AB668073 | <i>Paenibacillus</i> sp. IHB B 2257 (HM233959) | Firmicutes; <i>Paenibacillus</i> | 99% |
| Acjc6 | AB668074 | <i>Staphylococcus</i> sp. CTSP32 (EU855210) | Firmicutes; <i>Staphylococcus</i> | 99% |
| Acjd1 | AB668075 | <i>Streptomyces</i> sp. ACT-40 (DQ837758) | Actinobacteria; <i>Streptomyces</i> | 99% |
| Acjd2 | AB668076 | <i>Pantoea</i> sp. PPE7 (AY501386) | Proteobacteria; Gammaproteobacteria | 96% |
| Acjd3 | AB668077 | <i>Pantoea</i> sp. PPE7 (AY501386) | Proteobacteria; Gammaproteobacteria | 96% |
| Acjd4 | AB668078 | <i>Bacillus cereus</i> strain TAUC5 (HQ914780) | Firmicutes; <i>Bacillus</i> | 100% |

the experiment. Larval mortality was then assessed every day under a stereomicroscope over a 5 d period. Dead larvae were distinguished by the absence of respiration, decreased body elasticity, and a change in body color from white to milky yellow. The larval survival rates were analyzed by log-rank tests to determine statistical significance.

Results

16S rRNA Gene Sequences and Phylogenetic Analysis of Isolates

In total, 128 bacterial colonies were isolated from the gut of *A. c. japonica* by using a culture-dependent method. Of these isolates, 17 were selected based on colony size, color, and morphology, and their *16S rRNA* genes were sequenced. The 17 *16S rRNA* gene sequences were designated Acja1~Acjd4 (GenBank accession numbers AB668062~AB668078) and subjected to an NCBI BLAST-N search to identify sequences with the highest sequence similarities (Table 1). A phylogenetic tree was constructed by NJ analysis of the 17 DNA sequences obtained in this study (Table 1) as well as related sequences obtained using the BLAST-N search (Fig. 1).

One of the isolates (Acjd1) belonged to the phylum Actinobacteria, three isolates (Acjc4, Acjd2, and Acjd3) belonged to the class Gammaproteobacteria in the phylum Proteobacteria, and the remaining 13 isolates belonged to the phylum Firmicutes.

Isolates were then further classified into the following seven genera based on *16S rRNA* gene sequence similarities: *Bacillus*, *Staphylococcus*, *Lysinibacillus*, *Xanthomonas*, *Paenibacillus*, *Streptomyces*, and *Pantoea*. The results showed that eight strains from this study (Acja1, Acja3, Acjb1, Acjb2, Acjc1, Acjc2, Acjc3, and Acjd4) grouped with the main cluster, which consisted of members of the genus *Bacillus*. The Acjd2 and Acjd3 isolates were most closely related to the *Pantoea* sp. PPE7, and this association was supported by high bootstrap values. The Acjc4 isolate was closely related to unclustered Xanthomonadales bacteria, and the Acja5 isolate formed a distinct cluster with *Lysinibacillus fusiformis*. The Acjc5 isolate was closely associated with a *Paenibacillus* sp. (HM233959), which was isolated previously from the roots of a tree.

Table 2. Carbon source assimilation profiles using API 50CH

| Carbohydrate | Bacterial Strains | | | | | | | | | | | | | | | | |
|------------------------------------|-------------------|-------|-------|-------|-------|-------|-------|----------------|----------------|---------|--------------------------|-------------|---------------|--------------|-------|-------|-------|
| | Bacillus | | | | | | | Staphylococcus | Lysinibacillus | Pantoea | Unclassified Bacillaceae | Xanthomonas | Paenibacillus | Streptomyces | | | |
| | Acja1 | Acja3 | Acjb2 | Acjc1 | Acjc2 | Acjc3 | Acjd4 | Acja2 | Acja4 | Acjc6 | Acja5 | Acjd2 | Acjd3 | Acjb1 | Acjc4 | Acjc5 | Acjd1 |
| Control | - | - | - | - | - | - | - | - | - | - | - | - | - | - | - | - | - |
| Glycerol | - | - | + | + | + | + | + | ++ | - | ++ | - | - | - | + | + | ++ | - |
| L-arabinose | - | ++ | - | - | - | - | - | ++ | - | ++ | - | - | - | + | ++ | ++ | - |
| D-ribose | ++ | ++ | ++ | ++ | ++ | ++ | ++ | ++ | - | + | - | - | + | + | + | ++ | - |
| D-xylose | - | + | - | - | - | - | - | - | - | ++ | - | - | - | + | - | ++ | - |
| D-galactose | - | - | - | ++ | - | - | - | ++ | - | + | - | - | - | - | ++ | ++ | - |
| D-glucose | ++ | + | ++ | ++ | ++ | ++ | ++ | ++ | - | ++ | - | ++ | ++ | ++ | ++ | ++ | ++ |
| D-fructose | ++ | + | ++ | ++ | ++ | ++ | ++ | ++ | + | ++ | - | + | + | + | ++ | ++ | + |
| D-mannose | - | + | - | - | - | - | - | ++ | - | ++ | - | - | - | - | ++ | ++ | - |
| Inositol | - | + | - | - | + | - | - | ++ | - | + | - | - | - | - | - | + | - |
| D-mannitol | - | + | - | - | - | - | - | ++ | - | ++ | - | ++ | ++ | + | + | ++ | ++ |
| D-sorbitol | - | + | - | - | - | - | - | ++ | - | ++ | - | - | - | - | + | + | - |
| α -methyl-D-glucopyranoside | - | ++ | - | - | - | - | - | ++ | - | + | - | - | - | - | - | + | - |
| N-acetyl-glucosamine | ++ | - | ++ | ++ | ++ | ++ | ++ | ++ | - | ++ | - | ++ | ++ | + | ++ | ++ | ++ |
| Amygdalin | - | + | - | + | - | + | + | ++ | - | + | - | - | - | - | ++ | ++ | - |
| Arbutin | ++ | + | + | ++ | ++ | ++ | ++ | ++ | - | + | - | - | - | - | ++ | ++ | - |
| Esculin-ferric-citrate | ++ | ++ | ++ | ++ | ++ | ++ | ++ | ++ | ++ | ++ | + | - | - | ++ | ++ | ++ | - |
| Salicin | ++ | + | + | ++ | ++ | ++ | + | ++ | - | + | - | - | - | - | ++ | ++ | - |
| D-cellobiose | ++ | + | + | + | ++ | + | + | ++ | - | + | - | - | - | - | ++ | ++ | - |
| D-maltose | ++ | + | ++ | ++ | ++ | ++ | ++ | ++ | - | ++ | - | - | - | ++ | ++ | ++ | - |
| D-lactose | - | + | - | - | - | + | - | ++ | - | ++ | - | - | - | + | ++ | ++ | - |
| D-melibiose | - | + | - | - | - | - | - | - | - | + | - | - | - | ++ | - | ++ | - |
| D-sucrose | ++ | + | - | - | ++ | - | ++ | ++ | + | ++ | - | - | - | ++ | ++ | ++ | - |
| D-trehalose | ++ | + | ++ | ++ | ++ | ++ | ++ | ++ | - | ++ | - | - | - | + | ++ | ++ | - |
| D-raffinose | - | + | - | - | - | - | - | - | - | + | - | - | - | ++ | - | ++ | - |
| Starch | ++ | - | ++ | ++ | ++ | ++ | ++ | - | - | - | - | - | - | ++ | + | ++ | - |
| Glycogen | ++ | - | ++ | ++ | ++ | ++ | ++ | - | - | - | - | - | - | ++ | - | ++ | - |
| Gentiobiose | - | - | - | - | - | - | - | ++ | - | ++ | - | - | - | + | ++ | ++ | - |
| D-turanose | - | ++ | - | - | - | - | - | ++ | - | + | - | - | - | - | + | ++ | - |
| D-fucose | - | - | - | - | - | - | - | ++ | - | - | - | - | - | - | + | - | - |

The symbols ++, +, and - indicate strong, weak, and no utilization, respectively. Grey boxes indicate differences between isolates Acj2 and Acjd4.

Carbon Utilization by the Isolated Bacteria

Carbon sources utilized by the 17 isolates were examined using an API 50CH Biochemical Kit. Although all isolates, except Acja4 and Acja5, utilized glucose and fructose (Table 2), which are major components of honey, each isolate had a unique carbon source utilization profile. Although isolates Acjc2 and Acjd4 had identical *16S rRNA* gene sequences, the isolates could be distinguished from each other based on differences in their utili-

zation of four different sugar substrates (grey backgrounds in Table 2), suggesting that biochemical profiles could be used to distinguish between isolates with highly similar *16S rRNA* gene sequences.

In Vitro Antagonistic Assay against *M. plutonius*

To investigate the growth inhibitory activity against the *M. plutonius* DAT561 strain, we subjected all of the gut bacterial isolates to an in vitro inhibitory zone assay. One of the iso-

lates, Acja3, identified as a *Bacillus* strain, showed strong inhibitory activity against the DAT561 strain, and had an average zone diameter of 19.7 mm (Fig. 2). Such inhibitory activity was not observed in any of the other isolates. The positive control (tetracycline) had an average zone diameter of 37.3 mm.

Infectious Feeding Assay in *A. mellifera* Larvae

Apis mellifera is the most commercially important honey bee species. To determine the in vivo antagonistic activity of isolate Acja3 against *M. plutonius*, first-instar larvae of *A. mellifera* were treated with isolate Acja3 or with a cell-free supernatant (CFS) of Acja3 before being administered an artificial diet containing *M. plutonius* DAT561. As shown in Fig. 3, when larvae were infected with *M. plutonius* DAT561 without any pre-treatments (untreated group), 83.3% of them died within 5 d. However, when larvae were pre-treated with isolate Acja3 or its CFS, 54.2% (Acja3-treated group) and 62.5% (Acja3 CFS-treated group) of larvae were still alive at day 5, and mortality was significantly lower than that in the untreated group (log-rank test, $P = 0.0181$ [Acja3-treated group vs. untreated group]; $P = 0.0033$ [Acja3 CFS-treated group vs. untreated group]). The larvae in the uninfected control group maintained a survival rate of 100% throughout the experiments, and no significant difference was observed in the mortality of the larvae in the Acja3-treated and Acja3 CFS-treated groups (log-rank test, $P = 1.0000$). The results suggested that isolate Acja3 had an antagonistic effect on *M. plutonius* in vivo.

Discussion

In this study, we isolated intestinal bacteria from the Japanese honey bee by using culture-dependent methods to assess their potential

antagonistic effects on the pathogenic bacterium *M. plutonius*. Sequence analysis of *16S rRNA* genes revealed that most of the isolated bacteria belonged to the genus *Bacillus*, and in vivo feeding assays showed that one of these *Bacillus* isolates (Acja3) exhibited inhibitory activity against *M. plutonius* in *A. mellifera*.

This abundance of *Bacillus* species corroborated the findings of a previous study on Japanese honey bees (Yoshiyama and Kimura 2009), as well as another culture-dependent study that suggested that bacteria in the genus *Bacillus* are important floral components of the Asian honey bee, *Apis cerana indica* F. (Hymenoptera: Apidae) (Disayathanooawat et al. 2012). The European honey bee, *A. mellifera*, has also been reported to harbor high numbers of *Bacillus* species in the gut (Gilliam and Morton 1978; Gilliam 1979, 1985; Evans and Armstrong 2005, 2006; Alippi and Reynaldi 2006; Sabaté et al. 2009). These results imply that members of the genus *Bacillus* are commonly found in the gut of *Apis* spp.

Bacillus species inhabit a variety of environments and play an important role as probiotic organisms in humans and animals because of the many metabolites that they produce (Hong et al. 2005, Guo et al. 2006). The relationships between honey bees and *Bacillus* bacteria have been extensively examined (Gilliam 1979, 1985; Gilliam et al. 1984). Most of these studies have reported that the symbiotic *Bacillus* bacteria benefit honey bees by facilitating pollen fermentation, food protection, and disease prevention; for example, *Bacillus subtilis* strains have been shown to inhibit the growth of two other major honey bee pathogens, *P. larvae* and *A. apis* (Alippi and Reynaldi 2006, Sabaté et al. 2009). In addition, Sabaté et al. (2012) reported that *B. subtilis* strain Mori2 had beneficial effects on

colony performance. Our results also support the finding that *Bacillus* species have considerable probiotic potential against a variety of pathogenic bacteria.

Bacteria belonging to the genus *Bacillus* are known to produce a wide variety of antimicrobial and antiviral substances, or metabolites. Previous studies on *B. subtilis* have shown that surfactin, a lipopeptide produced by the bacterium, inhibited honey bee pathogens, including *P. larvae*, *A. apis* and *Nosema ceranae* (Microsporidia: Nosematidae) (Sabaté et al. 2009, Porrini et al. 2010). In the in vivo feeding assays using Acja3, the cell-free supernatant also conferred larval tolerance to *M. plutonius*, which suggests that the antimicrobial activity of the Acja3 isolate was also due to the presence of antimicrobial compounds or metabolites. The in vivo assays were performed using honey bee larvae that were fed an artificial food that was rich in royal jelly. Interestingly, it has been shown that royal jelly prevents the growth of lactic acid bacteria that had been administered as probiotics to feeding larvae (Forsgren et al. 2009). In this study, feeding assays using royal jelly also had a negative effect on Acja3 survival, preventing bacterial growth in less than 12 h (data not shown). It is considered that the observed antibacterial effect of royal jelly may be due to the presence of antimicrobial peptides or its low pH (4.0); consequently, the probiotic effects of Acja3 inoculation may have been underestimated. Although further studies are required to confirm whether this antagonistic activity is observed in individuals and colonies in the natural environment, it appears that the Acja3 isolate is potentially well suited for use as a biological agent for controlling European foulbrood.

Honey bees can acquire gut microorganisms from the natural environment through foods, such as nectar, pollen, and water. Consequently, the gut flora of honey bees varies according to seasonal or geographical differences in food sources, even among individual honey bees from the same colony (Gilliam and Valentine 1976, Mohr and Tebbe 2006, Moran et al. 2012). The profile of gut bacteria may also vary depending on the age and physiological condition of honey bees. Newly emerged workers typically have no or very few gut bacteria (Martinson et al. 2012). In these young workers, the initial uptake of such bacteria likely occurs via contact with collected honey and bee bread and via trophallactic exchange with nestmates. Larvae acquire enteric bacteria when nurse bees feed them by trophallaxis. However, reports of differences in larval gut bacterial profiles imply that the gut bacterial profiles of larvae can be influenced by differences in the microbial communities present in bee bread (Mohr and Tebbe 2006, Martinson et al. 2012). The observation that certain gut bacteria are maintained in all of the developmental stages of an adult bee, irrespective of differences between species, colonies, and individuals, suggests that distinctive gut bacteria are transferred between generations by eusocial behaviors, such as food exchange between the honey bee populations in a hive (Martinson et al. 2011, 2012; Vasquez et al. 2012).

A large-scale study to screen honey bees from different geographic locations and/or at different times would therefore be useful in the search for new biological agents that could potentially be applied to the control of European foulbrood and other honey bee pathogens.

Acknowledgements

The authors thank Dr. Sota Kobayashi for helpful suggestions on the statistical analysis. This work was supported by a grant from the Promotion of Basic Research Activities for Innovative Biosciences (PRO-BRAIN) and a Grant-in-Aid for Scientific Research (C) (22580345) from the Japan Society for the Promotion of Science.

References

- Alippi, A. M., and F. J. Reynaldi. 2006.** Inhibition of the growth of *Paenibacillus larvae*, the causal agent of American foulbrood of honey bees, by selected strains of aerobic spore-forming bacteria isolated from apiarian sources. *Journal of Invertebrate Pathology* 91: 141–146.
- Arai, R., K. Tominaga, M. Wu, M. Okura, K. Ito, N. Okamura, H. Onishi, M. Osaki, Y. Sugimura, M. Yoshiyama, and D. Takamatsu. 2012.** Diversity of *Melissococcus plutonius* from honey bee larvae in Japan and experimental reproduction of European foulbrood with cultured atypical isolates. *PLoS One* 7: e33708.
- Audisio, M. C., M. J. Torres, D. C. Sabaté, C. Ibarguren, and M. C. Apella. 2011.** Properties of different lactic acid bacteria isolated from *Apis mellifera* L. bee-gut. *Microbiological Research* 166: 1–13.
- Aupinel, P., D. Fortini, H. Dufour, J. N. Tasei, B. Michaud, J. F. Odoux, M. H. Pham-delegue. 2005.** Improvement of artificial feeding in a standard in vitro method for rearing *Apis mellifera* larvae. *Bulletin of Insectology* 58: 107–111.
- Bailey, L. 1983.** *Melissococcus pluton*, the cause of European foulbrood of honey bees (*Apis* spp.). *Journal of Applied Microbiology* 55: 65–69.
- Bailey, L., and M. D. Collins. 1982.** Reclassification of *Streptococcus pluton* (White) in a new genus *Melissococcus*, as *Melissococcus pluton* nom. rev.; comb. nov. *Journal of Applied Microbiology* 53: 215–217.
- Belloy, L., A. Imdorf, I. Fries, E. Forsgren, H. Berthoud, R. Kuhn, and J. D. Charrière. 2007.** Spatial distribution of *Melissococcus plutonius* in adult honey bees collected from apiaries and colonies with and without symptoms of European foulbrood. *Apidologie* 38: 136–140.
- Chen, Y. W., C. H. Wang, J. An, and K. K. Ho. 2000.** Susceptibility of the Asian honey bee, *Apis cerana*, to American foulbrood, *Paenibacillus larvae larvae*. *Journal of Apicultural Research* 39: 169–175.
- de Graaf, D. C, A. M. Alippi, M. Brown, J. D. Evans, M. Feldlaufer, A. Gregorc, M. Hornitzky, S. F. Pernal, D. M. Schuch, D. Titera, V. Tomkies, W. Ritter. 2006.** Diagnosis of American foulbrood in honey bees: a synthesis and proposed analytical protocols. *Letters in Applied Microbiology* 43: 583–590.
- Disayathanoowat, T., M. Yoshiyama, K. Kimura, and P. Chantawannakul. 2012.** Isolation and characterization of bacteria from the midgut of the Asian honey bee (*Apis cerana indica*). *Journal of Apicultural Research* 51: 312–319.
- Evans, J. D., and T. N. Armstrong. 2005.** Inhibition of the American foulbrood

bacterium, *Paenibacillus larvae larvae*, by bacteria isolated from honey bees. *Journal of Apicultural Research* 44: 168–171.

Evans, J. D., and T. N. Armstrong. 2006. Antagonistic interactions between honey bee bacterial symbionts and implications for disease. *BMC Ecology* 6: 4.

Evans, J. D, and D. L. Lopez. 2004. Bacterial probiotics induce an immune response in the honey bee (Hymenoptera: Apidae). *Journal of Economic Entomology* 97: 752–756.

Forsgren, E. 2010. European foulbrood in honey bees. *Journal of Invertebrate Pathology* 103: S5–S9.

Forsgren, E., A. C. Lundhagen, A. Imdorf, and I. Fries. 2005. Distribution of *Melissococcus plutonius* in honey bee colonies with and without symptoms of European foulbrood. *Microbial Ecology* 50: 369–374.

Forsgren, E., T. C. Olofsson, A. Vasquez, and I. Fries. 2009. Novel lactic acid bacteria inhibiting *Paenibacillus larvae* in honey bee larvae. *Apidologie* 41: 99–108.

Genersch, E. 2010. Honey bee pathology: current threats to honey bees and beekeeping. *Applied Microbiology and Biotechnology* 87: 87–97.

Gilliam, M. 1979. Microbiology of pollen and bee bread: the genus *Bacillus*. *Apidologie* 10: 269–274.

Gilliam, M. 1985. Microbes from apiarian sources: *Bacillus* spp. in frass of the greater wax moth. *Journal of Invertebrate Pathology* 45: 218–224.

Gilliam, M. 1997. Identification and roles of non-pathogenic microflora associated with honey bees. *FEMS Microbiology Letters* 155: 1–10.

Gilliam, M., and H. L. Morton. 1978. Bacteria belonging to the genus *Bacillus* isolated from honey bees, *Apis mellifera*, fed 2,4-D and antibiotics. *Apidologie* 9: 213–222.

Gilliam, M., and D. K. Valentine. 1976. Bacteria isolated from the intestinal contents of foraging worker honey bees, *Apis mellifera*: the genus *Bacillus*. *Journal of Invertebrate Pathology* 28: 275–276.

Gilliam, M., S. L. Buchmann, and B. J. Lorenz. 1984. Microbial flora of the larval provisions of the solitary bees, *Centris pallida* and *Anthophora* sp. *Apidologie* 15: 1–10.

Guo, X., D. Li, W. Lu, X. Piao, and X. Chen. 2006. Screening of *Bacillus* strains as potential probiotics and subsequent confirmation of the in vivo effectiveness of *Bacillus subtilis* MA139 in pigs. *Antonie van Leeuwenhoek* 90: 139–146.

Hong, H. A., L. H. Duc, and S. M. Cutting. 2005. The use of bacterial spore formers as probiotics. *FEMS Microbiology Reviews* 29: 813–835.

Klein, A. M., B. E. Vaissiere, J. H. Cane, I. Steffan-Dewenter, S. A. Cunningham, C. Kremen, and T. Tschardt. 2007. Importance of pollinators in changing landscapes for world crops. *Proceedings of the Royal Society B: Biological Sciences* 274: 303–313.

Martinson, V. G., B. N. Danforth, R. L. Minckley, O. Rueppell, S. Tingek, and N. A. Moran. 2011. A simple and distinctive

microbiota associated with honey bees and bumble bees. *Molecular Ecology* 20: 619–628.

Martinson, V. G., J. Moy, and N. A. Moran. 2012. Establishment of characteristic gut bacteria during development of the honey bee worker. *Applied and Environmental Microbiology* 78: 2830–2840.

Mckee, B. A., R. D. Goodman, and M. A. Hornitzky. 2004. The transmission of European foulbrood (*Melissococcus plutonius*) to artificially reared honey bee larvae (*Apis mellifera*). *Journal of Apicultural Research* 43: 93–100.

Miyagi, T., C.Y.S. Peng, R. Y. Chuang, E. C. Mussen, M. S. Spivak, and R. H. Doi. 2000. Verification of oxytetracycline-resistant American foulbrood pathogen *Paenibacillus larvae* in the United States. *Journal of Invertebrate Pathology* 75: 95–96.

Mohr, K. I., and C. C. Tebbe. 2006. Diversity and phylotype consistency of bacteria in the guts of three bee species (*Apoidea*) at an oilseed rape field. *Environmental Microbiology* 8: 258–272.

Moran, N. A., A. K. Hansen, J. E. Powell, and Z. L. Sabree. 2012. Distinctive gut microbiota of honey bees assessed using deep sampling from individual worker bees. *PLoS One* 7: e36393.

Morse, R. A., and N. W. Calderone. 2000. The value of honey bees as pollinators of U.S. crops in 2000. *Bee Culture* 128: 1–15.

Mutinelli, F. 2003. European legislation governing the authorisation of veterinary medical products with particular reference to

the use of drugs for the control of honey bee diseases. *Apiacta* 38: 156–168.

Pătruică, S., and D. Mot. 2012. The effect of using prebiotic and probiotic products on intestinal micro-flora of the honey bee (*Apis mellifera carpatica*). *Bulletin of Entomological Research* 30: 1–5.

Peng, Y., Y. Fang, S. Xu, and L. Ge. 1987. The resistance mechanism of the Asian honey bee, *Apis cerana* Fabr., to an ectoparasitic mite, *Varroa jacobsoni* Oudemans. *Journal of Invertebrate Pathology* 49: 54–60.

Pettis, J. S., J. Kochansky, and M. F. Feldlaufer. 2004. Larval *Apis mellifera* L. (Hymenoptera: Apidae) mortality after topical application of antibiotics and dusts. *Journal of Economic Entomology* 97: 171–176.

Porrini, M. P., M. C. Audisio, D. C. Sabaté, C. Ibaguren, S. K. Medici, E. G. Sarlo, P. M. Garrido, and M. J. Eguaras. 2010. Effect of bacterial metabolites on microsporidian *Nosema ceranae* and on its host *Apis mellifera*. *Journal of Parasitology Research* 107: 381–388.

Reynaldi, F. J., M. R. De Giusti, and A. M. Alippi. 2004. Inhibition of the growth of *Ascosphaera apis* by *Bacillus* and *Paenibacillus* strains isolated from honey. *Revista Argentina de Microbiología* 36: 52–55.

Sabaté, D. C., L. Carrillo, and M. C. Audisio. 2009. Inhibition of *Paenibacillus larvae* and *Ascosphaera apis* by *Bacillus subtilis* isolated from honey bee gut and honey samples. *Research in Microbiology* 160: 193–199.

Sabaté, D. C., M. S. Cruz, M. R. Benitez-Ahrendts, and M. C. Audisio. 2012.

Beneficial effects of *Bacillus subtilis* subsp. *subtilis* Mori2, a honey-associated strain, on honey bee colony performance. *Probiotics and Antimicrobial Proteins* 4: 39–46.

Thompson, H. M., and M. A. Brown. 2001.

Is contact colony treatment with antibiotics an effective control for European foulbrood? *Bee World* 82: 130–138.

Thompson, H. M., R. J. Waite, S. Wilkins, M. A. Brown, T. Bigwood, M. Shaw, C. Ridgway, and M. Sharman. 2005.

Effects of European foulbrood treatment regime on oxytetracycline levels in honey extracted from treated honey bee (*Apis mellifera*) colonies and toxicity to brood. *Food Additives and Contaminants* 22: 573–578.

vanEngelsdorp, D., and M. D. Meixner.

2010. A historical review of managed honey bee populations in Europe and the United States and the factors that may affect them. *Journal of Invertebrate Pathology* 103: S80–S95.

Vasquez, A., E. Forsgren, I. Fries, R. J. Paxton, E. Flaberg, L. Szekely, and T. C.

Olofsson. 2012. Symbionts as major modulators of insect health: lactic acid bacteria and honey bees. *PLoS One* 7: e33188.

Weisburg, W. G., S. M. Barns, D. A.

Pelletier, and D. J. Lane. 1991. 16S ribosomal DNA amplification for phylogenetic study. *Journal of Bacteriology* 173: 697–703.

Yoshiyama, M., and K. Kimura. 2009.

Bacteria in the gut of Japanese honey bee, *Apis cerana japonica*, and their antagonistic effect against *Paenibacillus larvae*, the causal

agent of American foulbrood. *Journal of Invertebrate Pathology* 102: 91–96.

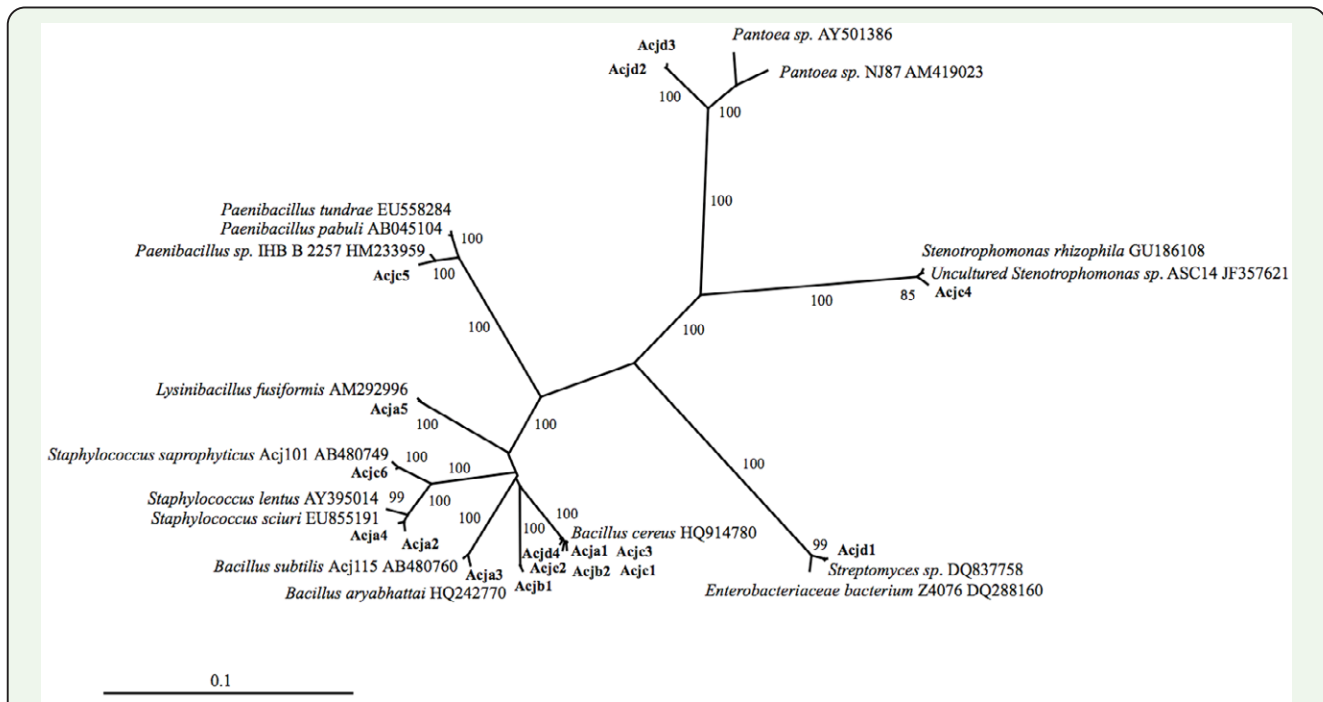


Figure 1. Phylogenetic tree based on 16S rRNA gene sequences of bacteria isolated from the gut of the Japanese honey bee, *A. c. japonica*. Isolates from Yoshiyama and Kimura (2009) are Acj115 and Acj101. Names of the isolates obtained in this study are shown in bold. Bootstrap values > 80% (expressed as percentages of 1,000 replicates) are given at the tree nodes. Scale bar represent 0.1 nucleotide substitutions per site.

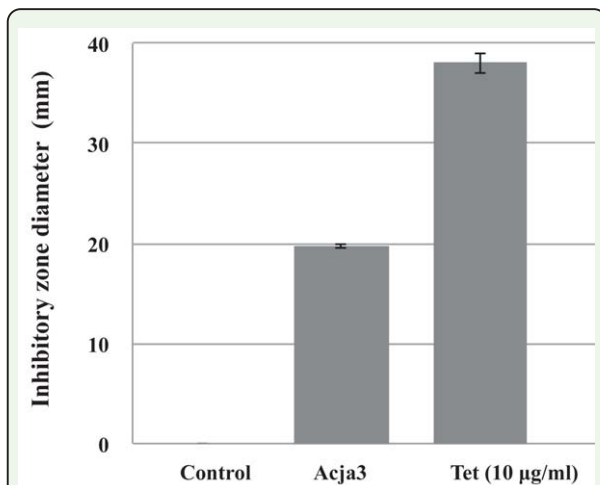


Figure 2. Inhibitory activity of Acja3 isolate obtained from the gut of the Japanese honey bee, *A. c. japonica*, against the *M. plutonius* DAT561 strain. Diameters (mean \pm SD) of inhibitory zones were calculated based on three independent experiments. BHI liquid medium and tetracycline (Tet) were used as negative and positive controls, respectively.

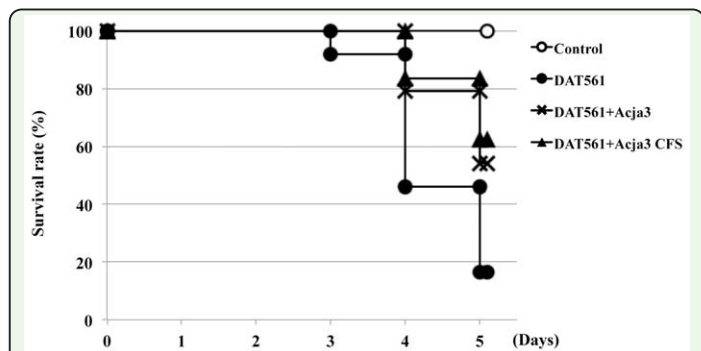


Figure 3. Survival rates of larvae treated with the *M. plutonius* DAT561 strain (solid circles), DAT561 plus Acja3 cell suspension (crosses), DAT561 plus Acja3 cell-free supernatant (CFS) (triangles), or control (open circles). In these in vivo feeding assays, 24 larvae were used in each of the infectious and non-infectious control groups, and 48 larvae were used in each of the Acja3- and Acja3 CFS-treated groups. The average survival rate was used in a log-rank statistical analysis.