

Coastal Ecosystem Responses to Human and Climatic Changes throughout Asia

Source: Journal of Coastal Research, 82(sp1)

Published By: Coastal Education and Research Foundation

URL: <https://doi.org/10.2112/1551-5036-82.sp1.ii>

The BioOne Digital Library (<https://bioone.org/>) provides worldwide distribution for more than 580 journals and eBooks from BioOne's community of over 150 nonprofit societies, research institutions, and university presses in the biological, ecological, and environmental sciences. The BioOne Digital Library encompasses the flagship aggregation BioOne Complete (<https://bioone.org/subscribe>), the BioOne Complete Archive (<https://bioone.org/archive>), and the BioOne eBooks program offerings ESA eBook Collection (<https://bioone.org/esa-ebooks>) and CSIRO Publishing BioSelect Collection (<https://bioone.org/csiro-ebooks>).

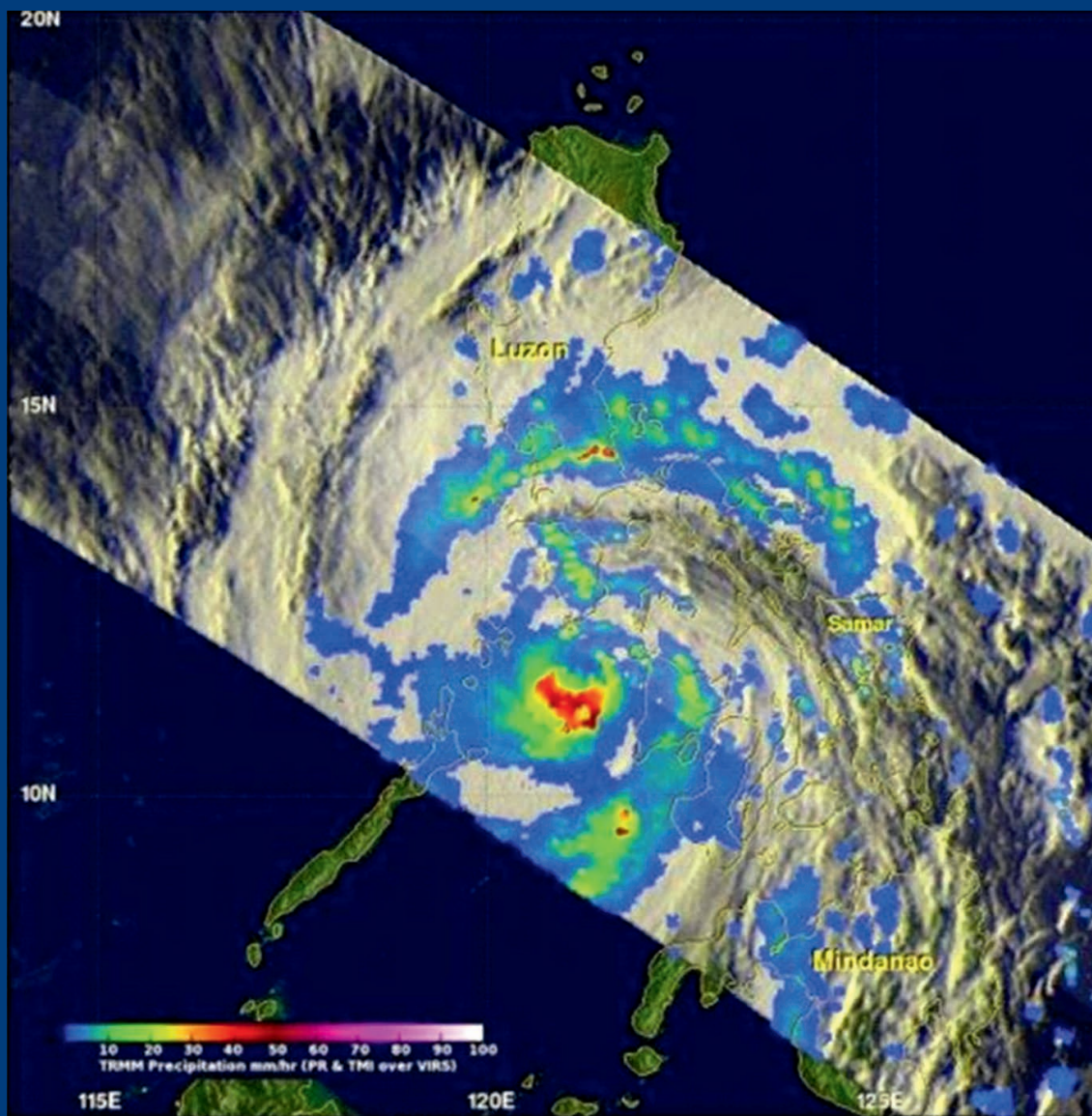
Your use of this PDF, the BioOne Digital Library, and all posted and associated content indicates your acceptance of BioOne's Terms of Use, available at www.bioone.org/terms-of-use.

Usage of BioOne Digital Library content is strictly limited to personal, educational, and non-commercial use. Commercial inquiries or rights and permissions requests should be directed to the individual publisher as copyright holder.

BioOne is an innovative nonprofit that sees sustainable scholarly publishing as an inherently collaborative enterprise connecting authors, nonprofit publishers, academic institutions, research libraries, and research funders in the common goal of maximizing access to critical research.

Coastal Ecosystem Responses to Human and Climatic Changes throughout Asia

Guest Editors: M.A. Ashraf and A.J.K. Chowdhury



Journal of
Coastal Research
Special Issue #82

An International Forum for the Littoral Sciences

Charles W. Finkl
Editor-in-Chief

Published by



JOURNAL OF COASTAL RESEARCH

An International Forum for the Littoral Sciences

CHEF-HERAUSGEBER

313 S. Braeside Court
Asheville, NC
28803, U.S.A.

BOOK REVIEW EDITOR

Luciana S. Esteves
Faculty of Science and Technology
Bournemouth University
Dorset, England, U.K.
lesteves@bournemouth.ac.uk

MITHERAUSGEBER

Edward J. Anthony
Coastal Geomorphology
Dunkerque, France

Kenneth Banks
Coral Reef Geomorphology
Plantation, Florida

Patrick Barnard
Coastal Geomorphology
Santa Cruz, California

Lindino Benedet
Oceanography, Modeling
Florianopolis, SC, Brazil

David M. Bush
Coastal Geology & Hazards
Carrollton, Georgia

Ilya V. Buynevich
Coastal Geology
Philadelphia, Pennsylvania

Javier A. Carrió
Sediment Processes
Valencia, Spain

Insik Chun
Coastal Engineering
Seoul, Republic of Korea

Vanda Claudino-Sales
Coastal Dynamics, Dunes
Ceará, Brazil

Mark Crowell
Coastal Zone Management
McLean, Virginia

Omar Defeo
Sandy Beach Ecology
Montevideo, Uruguay

J. Javier Diez
Coastal Geomorphology
Madrid, Spain

Joseph F. Donoghue
Coastal Morphology & Hazards
Orlando, Florida

Jean Ellis
Aeolian Sediment Transport
Columbia, South Carolina

Luciana Esteves
Coastal Flooding & Erosion
Bournemouth, England, UK

Niki Evelpidou
Sea-Level Change,
Palaeogeography
Athens, Greece

Oscar Manuel Ferreira
Storm Impacts
Faro, Portugal

Duncan M. FitzGerald
Sediment Transport
Boston, Massachusetts

Chip Fletcher
Coastal Geology
Honolulu, Hawaii

Kazimierz K. Furmańczyk
Marine Cartography
Szczecin, Poland

Allen Gontz
Geophysics, Stratigraphy
San Diego, California

Gary B. Griggs
Coastal Engineering & Hazards
Santa Cruz, California

Pramod Hanamgond
Coastal Geomorphology
Belgaum, India

Hans Hanson
Coastal Protection
Lund, Sweden

Simon Haslett
Paleoceanography
Swansea, Wales, UK

David Hill
Nearshore Hydrodynamics
Corvallis, Oregon

Michael Hilton
Dune Geomorphology & Ecology
Dunedin, New Zealand

Carl H. Hobbs, III
Coastal Geology, Sand Mining
Gloucester Point, Virginia

James R. Houston
Sea-Level Change
Vicksburg, Mississippi

Wenrui Huang
Coastal Hydrodynamics
Tallahassee, Florida

Michael G. Hughes
Coastal Morphodynamics
Canberra, ACT, Australia

Federico I. Isla
Sea-Level Change
Mar Del Plata, Argentina

Nancy L. Jackson
Coastal Geomorphology
Newark, New Jersey

Markes E. Johnson
Paleoshores, Coastal Sand Dunes
Williamstown, Massachusetts

EDITOR-IN-CHIEF

Charles W. Finkl

Coastal Education and Research Foundation, Inc. [CERF]

Editorial Offices:

7570 NW 47th Avenue

Coconut Creek, FL

33073, U.S.A.

(Editorial Office, Coconut Creek)

CERF/JCR Website: <http://www.CERF-JCR.org>

e-mail: cfinkl@cerf-jcr.com

RÉDACTEUR-EN-CHEF

EDITORIAL ASSISTANT

Barbara Russell

Coastal Education and Research

Foundation, Inc. [CERF/

7570 NW 47th Avenue

Coconut Creek, FL 33073, U.S.A.

barbara@cerf-jcr.com

WEB DESIGN & DEVELOPMENT

Jon Finkl

Media Mine

17600 River Ford Drive

Davidson, NC 28036, U.S.A.

jon@mediamine.net

ASSOCIATE EDITORS

Timothy R. Keen

Waves & Circulation
Stennis Space Center, Mississippi

Dieter H. Kelleat
Coastal Geomorphology
Essen/Cologne, Germany

Joseph T. Kelley
Sea-Level Change
Orono, Maine

Vic Klemas
Remote Sensing
Newark, Delaware

Nobuhisa Kobayashi
Coastal Engineering
Newark, Delaware

Vladimir N. Kosmynin
Coral Reefs, Coastal Ecology
Tallahassee, Florida

Michael J. Lace
Coastal Landforms & Processes
West Branch, Iowa

Stephen P. Leatherman
Barrier Islands, Beach Erosion
Miami, Florida

Charles Lemckert
Environmental Fluid Dynamics
Bruce, ACT, Australia

Hak Soo Lim
Hydrodynamics, Coastal
Engineering
Busan, Republic of Korea

Ioannis Liritzis
Geophysical Proxy Data
Rhodes, Greece

J. Paul Liu
Sea-Level Change, Deltas
Raleigh, North Carolina

Michel M. de Mahiques
Sediment Processes
São Paulo, Brazil

Gonzalo C. Malvárez
Beach Morphodynamics
Seville, Spain

Ashish J. Mehta
Coastal Engineering
Gainesville, Florida

Nobuo Mimura
Environmental Engineering
Ibaraki, Japan

Fatima Navas
Coastal Morphodynamics
Seville, Spain

Robert Nicholls
Global Climate Change
Southampton, England, UK

Karl F. Nordstrom

Coastal Geomorphology
New Brunswick, New Jersey

Julian Orford
Gravel Beaches, Storm Events
Belfast, Northern Ireland, UK

Phil D. Osborne
Sediment Dynamics
Shoreline, Washington

Hugh Parker
Airborne Lidar Bathymetry
Adelaide, SA, Australia

Charitha B. Pattiaratchi
Physical Oceanography
Crawley, WA, Australia

Carlos Pereira da Silva
Coastal Zone Management
Lisbon, Portugal

Michael Phillips
Coastal Geomorphology
Swansea, Wales, UK

Orrin H. Pilkey, Jr.
Coastal Geology
Durham, North Carolina

Nobert P. Psuty
Coastal Geomorphology
New Brunswick, New Jersey

Ulrich Radtke
Coastal Geomorphology
Duisburg-Essen, Germany

Elijah W. Ramsey, III
Coastal Image Processing
Lafayette, Louisiana

Kirt Rusenko
Sea Turtles, Dune Restoration
Boca Raton, Florida

Daniele Scarponi
Marine Paleocology
Bologna, Italy

Anja Scheffers
Coastal Hazards,
Palaeoclimatology
Lismore, NSW, Australia

Vic Semeniuk
Mangroves
Perth, WA, Australia

Douglas J. Sherman
Coastal & Aeolian Geomorphology
Tuscaloosa, Alabama

Andrew D. Short
Coastal Geomorphology
Sydney, NSW, Australia

COMITÉ DE REDACCIÓN

Pravi Shrestha
Coastal Engineering
Irvine, California

Tom Spencer
Biogeomorphology
Cambridge, England, UK

Marcel Stive
Coastal Hydrodynamics
Delft, The Netherlands

Vallam Sundar
Coastal Engineering
Chennai, India

E. Robert Thieler
Marine Geology
Woods Hole, Massachusetts

Arthur C. Trembanis
Coastal Morphodynamics
Newark, Delaware

Frank Van Der Meulen
Coastal Zone Management
Delft, The Netherlands

Ana Vila Concejo
Coastal Morphodynamics
Sydney, NSW, Australia

Ian J. Walker
Coastal Dunes & Sediments
Tempe, Arizona

Ping Wang
Beach Morphodynamics
Tampa, Florida

Phil Watson
Sea-Level Change
Gosford, NSW, Australia

Allan Williams
Coastal Geology
Swansea, Wales, UK

Harry F. Williams
Paleotempestology
Denton, Texas

Colin D. Woodroffe
Coastal Geomorphology
Wollongong, NSW, Australia

Zhaoqing Yang
Hydrodynamic Modeling
Seattle, Washington

Robert S. Young
Coastal Processes
Cullowhee, North Carolina

Guoliang Yu
Sediment Transport
Shanghai, China



THE JOURNAL OF COASTAL RESEARCH (JCR) (ISSN 0749-0208) IS PUBLISHED BIMONTHLY FOR \$115.00 FOR INDIVIDUAL US CERF MEMBERS, \$125.00 FOR INDIVIDUAL INTERNATIONAL CERF MEMBERS, \$519.00 FOR US INSTITUTIONS, AND \$541.00 FOR INTERNATIONAL INSTITUTIONS BY THE COASTAL EDUCATION AND RESEARCH FOUNDATION, INC. (CERF), 7570 NW 47TH AVENUE, COCONUT CREEK, FL 33073-2723. PERIODICALS POSTAGE PAID AT FORT LAUDERDALE, FL AND ADDITIONAL MAILING OFFICES. **POSTMASTER:** SEND ADDRESS CHANGES TO JOURNAL OF COASTAL RESEARCH, ALLEN PRESS ASSOCIATION MANAGEMENT, P.O. BOX 1897, LAWRENCE, KS 66044-3018.

© 2018 Coastal Education and Research Foundation, Inc. [CERF].

Ⓢ This paper meets the requirements of ANSI/NISO Z39.48-1992 (Permanence of Paper).



JOURNAL OF COASTAL RESEARCH

An International Forum for the Littoral Sciences

Supporting Scientific Institutions



- Consorzio Nazionale Interuniversitario per le Scienze del Mare (Co.N.I.S.Ma.) [Rome, Italy; www.conisma.it/]
- Delft University of Technology [Department of Hydraulic Engineering, Delft, The Netherlands; <http://www.citg.tudelft.nl/over-faculteit/afdelingen/hydraulic-engineering/>]
- Duke University [Earth and Ocean Sciences Division, Durham, North Carolina, U.S.A.; <https://nicholas.duke.edu/marinelab>]
- Griffith University [Center for Infrastructure Engineering and Management, Southport, Queensland, Australia; <https://www.griffith.edu.au/>]
- Ibaraki University [Center for Water Environmental Studies, Mito, Japan; <http://www.cwes.ibaraki.ac.jp/>]
- International Geographical Union (IGU) [Commission on Coastal System (CCS); <http://www.igu-ccs.org/>]
- Royal Belgian Institute of Natural Sciences [Management Unit of the North Sea Mathematical Models (MUMM), Brussels, Belgium; <http://www.mumm.ac.be/EN/index.php>]
- Rutgers University [Institute of Marine and Coastal Sciences (IMCS), New Brunswick, New Jersey, U.S.A.; <http://marine.rutgers.edu/main/>]
- Universidad de la República [Marine Science Unit, Montevideo, Uruguay; <http://www.imber.info/Science/National-Network/URUGUAY/>]
- Universidade Nova de Lisboa [e-Geo Center for Geographical and Regional Planning Studies, Lisbon, Portugal; <http://e-geo.fcsh.unl.pt/>]
- University of California, Santa Cruz [Institute of Marine Sciences, Santa Cruz, California, U.S.A.; <http://ims.ucsc.edu/>]
- University of Delaware [School of Marine Science and Policy, Newark, Delaware, U.S.A.; <http://www.ocean.udel.edu>]
- University of Maine [Climate Change Institute, Orono, Maine, U.S.A.; <http://climatechange.umaine.edu/>]
- University of Sydney [Coastal Studies Unit, Sydney, New South Wales, Australia; <http://sydney.edu.au/>]
- University of Szczecin [Institute of Marine and Coastal Science, Szczecin, Poland; <http://www.wnoz.ztikm.szczecin.pl/en/1/inom/structure/>]
- University of Ulster [Environmental Sciences Research Institute, Coleraine, Northern Ireland; <http://www.ulster.ac.uk/es/research/>]
- University of Wales, Trinity Saint David [Swansea Metropolitan University, Mount Pleasant, Swansea, South Wales, U.K.; <http://www.uwtsd.ac.uk/>]
- U.S. Army Corps of Engineers [Coastal and Hydraulics Laboratory (CHL), Vicksburg, Mississippi, U.S.A.; <http://chl.erdc.usace.army.mil/>]
- U.S. Geological Survey [National Wetlands Research Center, Lafayette, Louisiana, U.S.A.; <http://www.nwrc.usgs.gov/>]

Aims and Scope of the Journal

Journal of Coastal Research, an International Forum for the Littoral Sciences, is dedicated to all aspects of coastal research. These include geology, biology, geomorphology (physical geography), climate, littoral oceanography, hydrography, coastal hydraulics, environmental (resource) management, engineering, and remote sensing. Although each field functions effectively within its own purview, the cross-disciplinary nature of coastal studies requires familiarity with other fields as well. Hence, the scope of topics is necessarily broad in order to address the complexity of coastal biophysical and socio-economic interactions. Because of the wide range of interrelated topics, the journal invites original contributions and manuscripts dealing with theory, methodology, techniques, and field or applied topic studies on interdisciplinary coastal issues.

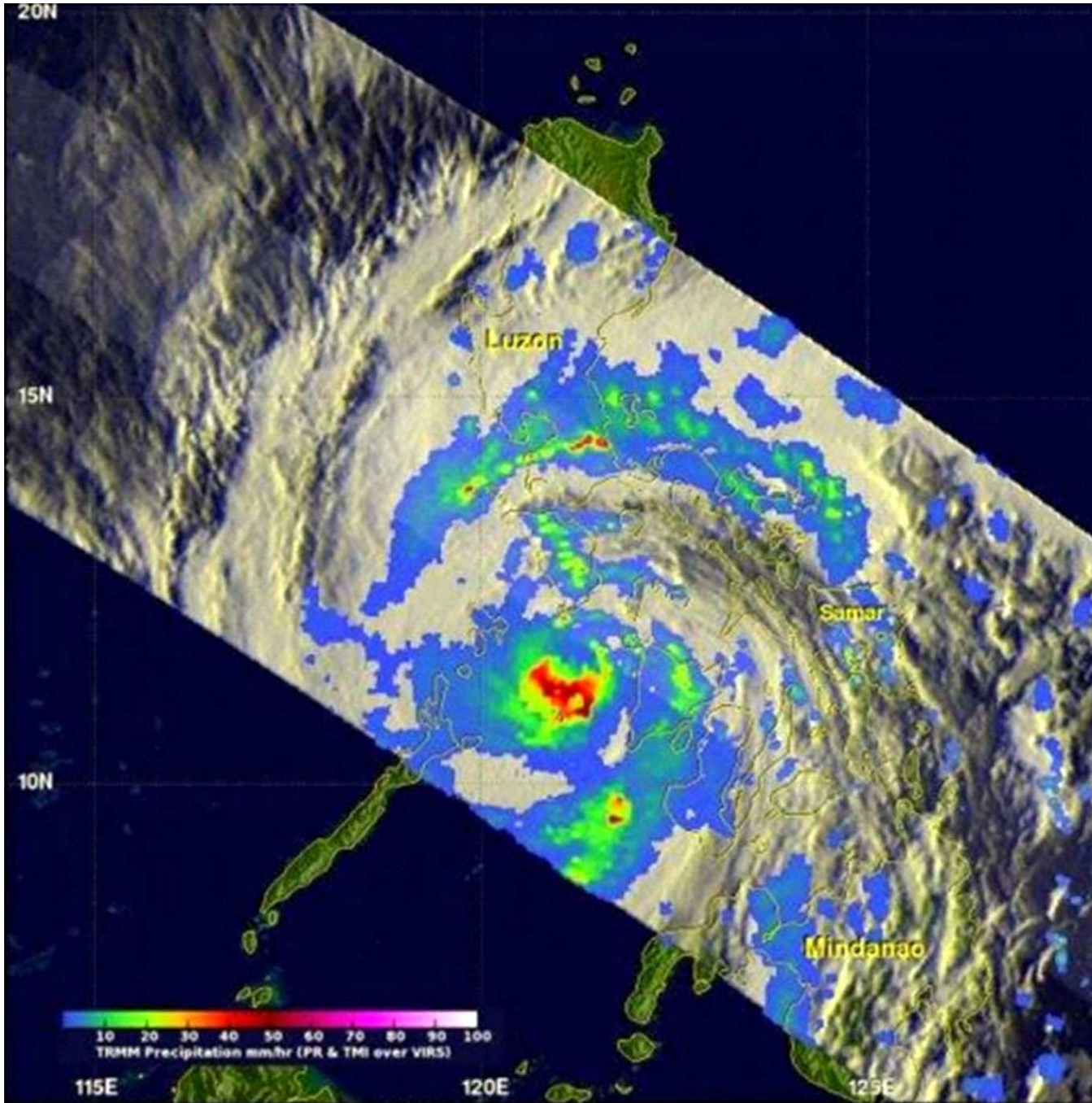
The journal encourages the dissemination of knowledge and understanding of the coastal zone by promoting cooperation and communication between specialists in different disciplines. Natural scientists, for example, are encouraged to collaborate with professionals in other fields to prepare contributions relating to the coastal zone that foster increased appreciation of coastal environments and processes. By means of this journal, with its scholarly and professional papers, systematic review articles, book and symposia reviews, communications and news, and special topical issues, an international forum for the development of integrated coastal research is provided.

Advertising, Editorial, and Subscription Information

Advertising and Editorial Office: All advertising and editorial correspondence should be sent to Dr. Charles W. Finkl, Editor-in-Chief, Journal of Coastal Research, 7570 NW 47th Avenue, Coconut Creek, FL 33073, U.S.A. PHONE: 954-899-8416. E-MAIL: cfinkl@cerf-jcr.com

Subscription Information: The *Journal of Coastal Research* is a bimonthly publication. Calendar-year (2018) print and online subscription prices for the JCR are: \$115.00 for US CERF members / \$125.00 for International CERF members (\$95.00 for online only), and \$519.00 for US institutions / \$541.00 for International institutions (\$437.00 for online only). Additional surface charges may apply to subscribers located outside of the USA. For additional membership and subscription forms and information, please go to www.CERF-JCR.org. To obtain a membership or subscription form by mail, please send request to Journal of Coastal Research, P.O. Box 7065, Lawrence, KS 66044. Back Issues and Special Issues of the JCR, when available, can be directly purchased at www.CERF-JCR.org.

The *Journal of Coastal Research* is currently surveyed in *Applied Science & Technology Abstracts*; *Applied Science & Technology Index (H.W. Wilson)*; *Aquatic Sciences & Fisheries Abstracts*; *BIOBASE*; *Biological Abstracts*; *BIOSIS Previews (Thomson)*; *CAB International Abstracts (CABI)*; *CSA Civil Engineering Abstracts (ProQuest)*; *Current Awareness in Biological Sciences (Elsevier)*; *Current Contents/Agriculture, Biology, & Environmental Sciences (Thomson)*; *Ecology Abstracts (ProQuest)*; *Environmental Sciences & Pollution Management*; *GeoAbstracts [Geographical Abstracts: Physical Geography; Ecological Abstracts; Geological Abstracts; GEODATA] (Elsevier)*; *GeoRef*; *Meteorological & Geostrophical Abstracts (ProQuest)*; *Oceanic Abstracts (ProQuest)*; *Oceanographic Literature Review (Elsevier)*; *Physical Sciences Digest (CSA, Ebsco)*; *Pollution Abstracts (ProQuest)*; *Referativnyi Zhurnal*; *Science Citation Index; SciSearch (Thomson)*; *SCOPUS*; *Water Resources Abstracts (Bethesda)*; *Zoological Record (Thomson)*.



Example of a binarized image product after wavelet denoising of remote sensing imagery has occurred. By using typhoon warning methods based on improved support vector machines (SVMs), shortcomings caused by human warnings can be avoided and the effectiveness of typhoon disaster early detection is improved. Eventually, the typhoon remote sensing image is transformed with algorithms into the data signal expression form, and the stability of the signal detection method is compared with the traditional method. Providing an intelligent platform for typhoon prevention can effectively carry out pre-warning of typhoon disasters (Shi, Yu, and Wang, 2018).

LITERATURE CITED

Shi, H.; Yu, Y., and Wang, Y., 2018. Early warning method for sea typhoons using remote sensing imagery based on improved support vector machines (SVMs). In: Ashraf, M.A. and Chowdhury, A.J.K. (eds.), *Coastal Ecosystem Responses to Human and Climatic Changes throughout Asia*. *Journal of Coastal Research*, Special Issue No. 82, pp. 180–185.

COASTAL EDUCATION AND RESEARCH FOUNDATION

7570 NW 47th Avenue
Coconut Creek, FL 33073, U.S.A.

Officers of the Foundation

Founded in 1983 by: Charles W. Finkl, Sr. (Deceased),
Charles W. Finkl, Jr., Rhodes W. Fairbridge (Deceased),
and Maurice L. Schwartz (Deceased)



**President &
Executive Director:**
Charles W. Finkl

**Senior Vice President &
Assistant Director:**
Christopher Makowski

Secretary:
Heather M. Vollmer

Executive Assistant:
Barbara Russell

Regional Vice Presidents

North America
James R. Houston
Victor V. Klemas
Orrin H. Pilkey, Jr.

Western Europe
Luciana Esteves
Carlos Pereira da Silva
Michael Phillips
Marcel J.F. Stive

South America
Vanda Claudino-Sales
Omar Defeo

Eastern Europe
Niki Evelpidou
Kazimierz K. Furmanczyk

Oceania
Charles Lemckert
Anja Scheffers
Vic Semeniuk
Andrew D. Short

Southeast Asia
Hak Soo Lim
Nobuo Mimura

Board of Directors (Trustees)

J. Andrew G. Cooper	Stephen P. Leatherman	Elijah W. Ramsey, III
Charles W. Finkl	Charles Lemckert	Vic Semeniuk
Duncan M. FitzGerald	Gonzalo C. Malvárez	Douglas J. Sherman
Gary B. Griggs	Christopher Makowski	Andrew D. Short
James R. Houston	Carlos Pereira da Silva	Daniel J. Stanley
Robert Huff	Michael Phillips	Marcel J.F. Stive
Joseph T. Kelley	Orrin H. Pilkey, Jr.	Allan Williams
Victor V. Klemas	Norbert P. Psuty	

Lifetime Members

Frédéric Bouchette	Tetsuya Kusuda	Philip D. Osborne
Yong-Sik Cho	Stephen P. Leatherman	Yoshiki Saito
Nicholas K. Coch	Charles Lemckert	Charles Thibault
Hany Elwany	J. Paul Liu	Erik van Wellen
Kazimierz K. Furmanczyk	Gonzalo C. Malvárez	Ya Ping Wang
Paul S. Kench	Norberto C. Nadal-Caraballo	Wei Zhang
Björn Kjerfve	Fatima Navas	

Patron Members

Lindino Benedet	Carl H. Hobbs, III	Norbert P. Psuty
Georges Chapalain	Timothy W. Kana	Robert S. Young
John B. Gallagher		

CERF Society Information

The Coastal Education and Research Foundation [CERF] is a nonprofit society dedicated to the advancement of the coastal sciences. The Foundation is devoted to the multi-disciplinary study of the complex problems of the coastal zone. The purpose of CERF is to help translate and interpret coastal issues for the public and to assist professional research and public information programs. The Foundation specifically supports and encourages field and laboratory studies on a local, national, and international basis. Through printed scientific publications, online content, and international symposiums, CERF brings accurate information to the public and coastal specialists on all aspects of coastal issues in an effort to maintain or improve the quality of shoreline resources.

Because CERF is concerned with broad environmental issues, our efforts concentrate on significant problems such as maintenance of good quality (potable) water with adequate supply, and hazards associated with potential beach erosion, flooding, and susceptibility of developed shorelines to storm surge and wave attack. By focusing attention on these potential man-made and natural hazards, it is hoped that our research efforts will help others improve the quality of life in diverse coastal areas. CERF thus aims to stimulate awareness of coastal (marine and freshwater shorelines) land and water problems; initiate and foster research and innovation to promote long-term coastal productivity; establish an educational forum for the debate of contentious coastal issues; and develop new principles and approaches for enlightened coastal management, and encourage their adoption and use.

□ CERF MEMBERSHIP □

Members are individuals that support the aims of the foundation through personal and group efforts or by donations. Memberships are available in different categories with privileges.

Subscription information is available online at www.cerf-jcr.org. Subscriptions office: Allen Press, Inc., P.O. Box 1897, Lawrence, KS 66044, U.S.A. CERF@allenpress.com

Editor-in-Chief

Charles W. Finkl Ph.D., CSci, CMarSci, FIMarEST, CPGS, CPSSc, PWS, MASCE

Dr. Charles W. Finkl is President and Executive Director of the Coastal Education and Research Foundation [CERF], publisher of the JCR. Charlie, a founding editor of the *Journal of Coastal Research*, has served as Editor-in-Chief for the past 34 years. He is a Research Professor in the Department of Geosciences at Florida Atlantic University in Boca Raton, Florida. He received his Bachelor and Master of Science degrees from Oregon State University and the Ph.D. from the University of Western Australia. He is a member of more than 20 professional societies and has published more than 200 professional papers, books, and reports. He is a Chartered Marine Scientist (CMarSci) [Institute of Marine Engineering, Science and Technology], Certified Professional Geological Scientist (CPGS) [American Institute of Professional Geologists (AIPG)], Certified Professional Soil Scientist (CPSSc) [American Registry of Certified Professionals in Agronomy, Crops, and Soils], and a Professional Wetland Scientist (PWS) [Society of Wetland Scientists]. Charlie has field experience in parts of the USA, Caribbean area, Brazil, Honduras, Russia, South Africa, Western Europe, Australasia, and South Pacific islands. He is also the Series Editor of the Encyclopedia of Earth Sciences Series that is published by Springer (Germany). There are more than twenty-eight volumes in the Series and about twenty-five are available online. Charlie also serves on the Editorial Board of the *International Journal of Environmental Studies* (Routledge) and is an occasional peer reviewer for many other professional journals.

Charlie has interests and expertise in the general areas of surficial geology, coastal and marine geomorphology (including coastal classification), coastal/marine biophysical environments, exploration geochemistry, soils and weathering (regolith geology), coastal zone management and engineering applications or impacts on natural systems (including erosion control and shore protection), coastal hydrology including submarine freshwater and mineralized seeps, subaerial and marine structural geology, natural hazard mitigation in coastal zones, marine environments and coastal wetland protection and restoration, and remote sensing (e.g., land cover classification in coastal wetlands, advection-diffusion turbidity plumes in coastal waters, delineation of bottom types and sand resources), effluent disposal and pollution of wetlands and estuaries, water resources mapping and conservation, time series studies of wetland hydroperiod and soil moisture.

International Coastal Symposium (ICS) Official Meeting of CERF

The International Coastal Symposium (ICS) was originally set up by Per Bruun (deceased) and Charlie Finkl as the official meeting of the Coastal Education and Research Foundation (CERF), with one of the first meetings being held in Hilton Head, South Carolina, in 1993. After the repeated success of these meetings, CERF moved the ICS to the international scene holding these conferences in conjunction with local sponsors in Australia, Brazil, Iceland, New Zealand, Northern Ireland, Poland, Portugal, and South Korea. The ICS brings together delegates from all over the world to collaborate and discuss the most current coastal research studies and projects. During the ICS 2014, which was held in Durban, South Africa, a grand celebration took place to mark the 30th Anniversary of CERF and the JCR. Our next ICS meeting is scheduled for April of 2020 in Seville, Spain. For more information, please visit www.cerf-jcr.org.

Journal of Coastal Research

SPECIAL ISSUE NO. 82 (Pages 1–308)

FALL 2018

ISSN 0749-0208

CONTENTS

Landslide Damage from Extreme Rainstorm Geological Accumulation Layers within Plain River Basins.....	Jun Yang	1
Design and Realization of Water Resources Carrying Capacity Evaluation Model for Marine Climate Cities	Longqin Yao and Hengquan Zhang	12
Correlation Analysis Method for Ocean Monitoring Big Data in a Cloud Environment.....	Junhui Song, Hua Xie, and Yan Feng	24
Numerical Simulation Solutions for Wind-Induced Vibration of Ship Rearview Mirrors Caused by Airflow Noise in Shallow Seas.....	Qi Ji and Liu Kun	29
Simulation on Variability of Marine Geotechnical Parameters Based on Data Reconstruction	Yu Zhao, Deying Zhang, Xueling Du, and Baolin Xiong	35
Determination of Optimal Freshwater Prawn Farming Site Locations using GIS and Multicriteria Evaluation	Firuz-Begham Mustafa and Benjamin Ezekiel Bwadi	41
Salt Movement during Soil Freezing Events in Inner Mongolia, China	Haorui Chen, Zhenyang Peng, Wenzhi Zeng, and Jingwei Wu	55
Modeling Analysis of Interactive Development between China's Marine Equipment Manufacturing and Coastal Producer Services	Jifei Xie	64
Hybrid Filtering Optimization Method for Denoising Contaminated Spot Images at Near-Sea-Surface Intervals	Wenzhong Zhu, Erli Wang, Yani Hou, Lidong Xian, and Muhammad Aqeel Ashraf	70
Rapid Determination of Mercury Speciation in Marine Products by Molecular Spectrometry	Juan Zhao, Zhilei Tan, Qiang Gao, Yangcang Xu, Shengping Jiang, and Muhammad Aqeel Ashraf	77
A Relative Tolerance Relation of Rough Set (RTRS) for Potential Fish Yields in Indonesia.....	Rd Rohmat Saedudin, Shahreen Kasim, Hairulnizam Mahdin, Edi Sutoyo, Iwan Tri Riyadi Yanto, Rohayanti Hassan, and Mohd Arfian Ismail	84
Modeling for the Evaluation of Marine Economic Development Trends in Nansha Free Trade Areas under the Background of <i>The Belt and Road</i> Policy.....	Shuling Zhou, Yingyan Zhang, and Xuedan Yang	93
Method of Access Control Model Establishment for Marine Information Cloud Platforms Based on Docker Virtualization Technology	Jianwen Shu and Yulan Wu	99
An Internet of Things–based Simulation Study on Lijiang River Water Environment Monitoring	Li Biqing, Yang Xiaomei, and Zheng Shiyong	106
Research on Intelligent Measurement Methods of Land Area Inundated by Seawater in Coastal Cities under Rainy Season Conditions.....	Hong Huang	114
Fish Scales as a Bioindicator of Potential Marine Pollutants and Carcinogens in Asian Sea Bass and Red Tilapia within the Coastal Waters of Pahang, Malaysia	Suzanah Abdul Rahman, Nur Aienun Abdullah, Ahmed Jalal Khan Chowdhury, and Kamaruzzaman Yunus	120
Analysis of the Flow Field in the Process of Rotorcraft Taking off and Landing on the Platforms of Ships.....	He Zheng, Sun Xiao-yu, Gu Xuan, Liu Ju, and Yang Chun-Ying	126
Security Performance Evaluation of Minehunting Equipment in the Cloud Computing Environment	Sen Zhang, Lifan Sun, Yuanyuan Liu, Qingtao Wu, and Keqi Xu	131
Allelopathic Effects of Various Aquatic Plants in Eutrophic Water Areas.....	Zhihao Zhang, Wei Li, and Muhammad Aqeel Ashraf	137
Evaluation Method of Underwater Unmanned Vehicle Sailing Efficiency under Wave Action	Hongwei Li	143
Diversity and Community Composition of Fishes in the Pusu River (Gombak, Malaysia)	K.-C.-A. Jalal, F.-K. Alifah, H.-N.-N. Faizul, A.-A. Mamun, M.-A. Kader, and M.-A. Ashraf	150
Designing Wireless Transmission Systems for the Dynamic Information Communication of Marine Vessels	Li Tao and Zhenhui Sun	156
Multilevel Layout Planning of Port Space Designs in Marine Transportation Systems.....	Jing Zeng and Rongying Wan	163
Sensitive Data Leakage Prevention for Ship Communications under Cloud Computing Platforms	Fang Liu, Xing Gao, and Yonghao Wu	168
Diversity, Antimicrobial Capabilities, and Biosynthetic Potential of Mangrove Actinomycetes from Coastal Waters in Pahang, Malaysia	Zaima Azira Zainal Abidin, Ahmed Jalal Khan Chowdhury, Nurfathiah Abdul Malek, and Zarina Zainuddin	174

Continued on page 310

Early Warning Method for Sea Typhoons using Remote-Sensing Imagery Based on Improved Support Vector Machines (SVMs)	Hongqin Shi, Ying Yu, and Yan Wang	180
Evaluation Method for Effective Coastal Repair in Moon Bay, Yingkou, China	Minghui Zhang, Zhaochen Sun, Jiawen Sun, Anning Suo, and Muhammad Aqeel Ashraf	186
Investigating the Durability and Seismic Performance of Reinforced Concrete Piers within Marine Environments	Zhu Jichao and Gong Jinxin	193
An Early Warning Method for Sea Typhoon Detection Based on Remote Sensing Imagery	Huijun Xiao and Meiyun Wei	200
Macrobenthic Diversity and Community Composition in the Pahang Estuary, Malaysia	Azfar Mohamad and K.C.A. Jalal	206
The Dynamic Response of an Experimental Floating Tunnel with Different Cross Sections under Explosive Impact.....	Luo Gang, Zhou Xiao-jun, and Chen Jian-xun	212
Phytoplankton Community Response to Coastal Engineering Construction in the Caofeidian Sea, China.....	Z.-W. Li and L.T. Cui	218
A Control Method of Demand Response Resources for Economic Dispatch Based on Temporal and Spatial Characters	Kun Shi, Zekun Li, Shihai Yang, Sheng He, and Hong Zhang	224
Competitiveness Evaluation of Shanghai Ports Based on Niche Theory	Wenjuan Li, Wei Liu, Likun Wang, and Jun Wen	232
Remediation of Marine Pollution by Microorganisms in the Comprehensive Management of Coastal Zones	Feng Yan and Yongqiang Wang	239
An Adaptive Sliding-Window Strategy for Outlier Detection in Wireless Sensor Networks for Smart Port Construction ...	Haiqing Yao, Yongsheng Yang, Xiuwen Fu, and Chao Mi	245
Cruise Route Simulation Designs for South Asia.....	Ling Sun, Wei Liu, Hanwen Zhang, Mengting Wu, and Hao Xu	254
Flow Curve Optimization Design for Offshore Backfilling Plough Fenders	Liquan Wang and Jianguo Qin	263
Research and Application of a Big Data-Driven Intelligent Reservoir Management System	Qiang Yue, Fusheng Liu, Yanfang Diao, and Yanmin Liu	270
Regional Green Innovation Efficiency in High-End Manufacturing.....	Luochen Li, Liang Lei, and Dongri Han	280
Path Optimization Method of Autonomous Intelligent Obstacle Avoidance for Multi-joint Submarine Robot	Peng An	288
Model and Algorithm for the Large Material Distribution Problem in Maritime Transportation	Zhongjun Hu	294