



A presence-only habitat suitability model for Persian leopard *Panthera pardus saxicolor* in Golestan National Park, Iran

Authors: Erfanian, Behnaz, Mirkarimi, Seyed Hamed, Mahini, Abdolrassoul Salman, and Rezaei, Hamid Reza

Source: Wildlife Biology, 19(2) : 170-178

Published By: Nordic Board for Wildlife Research

URL: <https://doi.org/10.2981/12-045>

BioOne Complete (complete.bioone.org) is a full-text database of 200 subscribed and open-access titles in the biological, ecological, and environmental sciences published by nonprofit societies, associations, museums, institutions, and presses.

Your use of this PDF, the BioOne Complete website, and all posted and associated content indicates your acceptance of BioOne's Terms of Use, available at www.bioone.org/terms-of-use.

Usage of BioOne Complete content is strictly limited to personal, educational, and non - commercial use. Commercial inquiries or rights and permissions requests should be directed to the individual publisher as copyright holder.

BioOne sees sustainable scholarly publishing as an inherently collaborative enterprise connecting authors, nonprofit publishers, academic institutions, research libraries, and research funders in the common goal of maximizing access to critical research.

A presence-only habitat suitability model for Persian leopard *Panthera pardus saxicolor* in Golestan National Park, Iran

Behnaz Erfanian, Seyed Hamed Mirkarimi, Abdolrassoul Salman Mahini & Hamid Reza Rezaei

Top predators such as leopard *Panthera* spp. are often associated with high biodiversity, so the protection of their habitats is one of the most effective ways to conserve biodiversity globally. In this paper, we use ecological niche factor analysis (ENFA), a presence-only environmental habitat-envelope based method to create habitat suitability maps for Persian leopard in Golestan National Park (GNP), Iran. The Persian leopard *Panthera pardus saxicolor* is an endangered subspecies on the IUCN Red List of Threatened Species. During a one-year field study in 2009, we recorded 120 leopard locations and related these to 14 environmental variables. Our analysis shows that the Persian leopard in this area lives within a very narrow range of conditions and therefore may require rather specific habitat protection and management in this area.

Key words: ecological niche factor analysis, Golestan National Park, habitat suitability, *Panthera pardus saxicolor*, Persian leopard

Behnaz Erfanian, Seyed Hamed Mirkarimi, Abdolrassoul Salman Mahini & Hamid Reza Rezaei, Department of Environmental Sciences, Gorgan University of Agricultural Sciences and Natural Resources, Gorgan, Iran - e-mail addresses: b_erfaniyan@yahoo.com (Behnaz Erfanian); mirkarimi.hamed@gmail.com (Seyed Hamed Mirkarimi); a_mahini@yahoo.com (Abdolrassoul Salman Mahini); hamid.r.rezaei@gmail.com (Hamid Reza Rezaei)

Corresponding author: Behnaz Erfanian

Received 1 May 2012, accepted 28 December 2012

Associate Editor: John P. Ball

Knowledge of the distribution of threatened species and their habitat requirements is an important element of conservation biology (Engler et al. 2004). Management for threatened species, ecosystem restoration, species reintroductions, population viability analyses and resolving conflicts between humans and wildlife often rely on habitat suitability modelling (LeLay et al. 2001, Hirzel et al. 2001). Multivariate models are commonly used to define habitat suitability and combined with geographical information systems (GIS) allow researchers to create potential distribution maps (Guisan & Zimmermann 2000).

Presence-only modelling techniques are increasingly being used to study the distribution of many different organisms (Robertson et al. 2001, Hirzel et al. 2001). One of these alternative techniques is ecological niche factor analysis (ENFA; Hirzel et al.

2002). Because the results of ENFA analysis are straightforward and often easily interpreted (Rood et al. 2010), and because the software is readily available, we chose to use ENFA for assessing the habitat of the Persian leopard *Panthera pardus saxicolor*. The canonical depiction of the species' niche relative to its environment allows one to evaluate which part of the available habitat is occupied and to assess to which extent the available habitat is utilised (Titeux et al. 2006, Braunisch et al. 2008). Note that ENFA is more suited to determine a species potential distribution rather than its realised distribution (Jimenez-Valverde et al. 2008). According to the latest assessment of leopard status for the 2008 IUCN Red List of Threatened Species, the Persian leopard should be classified as 'endangered' under the category C2a(i) (Khorozyan et al. 2005, Khorozyan 2008). Iran has been the stronghold of the Persian leopard population

in the Middle East where the range of approximately 885,300 km² provides home for an estimated 550-850 individuals (Kiabi et al. 2002, Khorozyan 2008).

The most urgent threat to the Persian leopard is the ever increasing fragmentation of the population into the patchy network of distant and often too small subpopulations. According to Ghoddousi et al. (2008), not a single subpopulation across the entire range is believed to contain more than 100 adult individuals and only a handful of protected areas (all concentrated in Iran) are large enough to maintain viable subpopulations of Persian leopards. Prey reduction because of poaching, infrastructure development, disturbance and habitat loss (collection of edible plants and mushrooms, mining, road construction, deforestation, wild fire and livestock grazing) are the principal factors of the fragmentation, leaving vast tracts of habitats unsuitable for resident Persian leopard subpopulations (Fumagalli 2007, Khorozyan 2008, Ghoddousi et al. 2008). In some areas, Persian leopards regularly attack domestic livestock because of reductions in natural prey, and then clash with rural people who try to eliminate predators by poisoning prey remains (Farhadinia et al. 2007). Previous research on the Persian leopard in Iran has focused on the species' population size and status (Kiabi et al. 2002, Farhadinia et al. 2009), reproductive ecology (Farhadinia et al. 2009), genetic diversity (Farhadinia 2009), territorial marking (Ghoddousi et al. 2008), habitat modelling (Omidi 2008), status analysis and distribution mapping in Iran (Sanei 2007).

Despite the need for efficient habitat protection efforts, more ecological studies on the Persian leopard in Golestan National Park (GNP) are needed. In fact, our study is the first attempt to determine Persian leopard habitat suitability in GNP to date; no field study has been carried out in this

region. Hence, in the present study, we used ENFA to: 1) develop predictive habitat suitability maps for Persian leopards, 2) identify the environmental variables important in describing the habitat for this subspecies and 3) quantify the extent and location of potential Persian leopard habitat available for conservation action in GNP.

Material and methods

Study area

The GNP is located in the northeastern part of Iran near the border with Turkmenistan and covers an area of about 919 km². It is considered one of Iran's most important national parks because of its natural assets such as its verdant, virgin forests. The park is located east of the Caspian Sea between 37°24'N and 55°58'E (37.403°N and 55.976°E; Madjnoonian et al. 1999; Fig. 1). The vegetation of the park can be divided into two zones: the Hyrcanian forest in east Alborz (the western section of the park with a high humidity) and the Iran-Turanian vegetation (the eastern section of the park where it is dry; Javanshir 1976). Its maximum and minimum elevations are the summit of Divarkaji and the Tangrah at approximately 2,411 m and 450 m altitudes, respectively. The park includes mountainous areas, hills, fields and plains. The mountainous areas of the park are mostly located in the northern and western parts, with altitude reducing gradually towards the steppe-covered east. The average annual precipitation is 400 mm and annual average temperature is 11.9°C from April to October and 10.5°C from December to March.

GNP is the most important protected area of Iran with great habitats for Persian leopards because of its unique natural situation and the well-chosen location

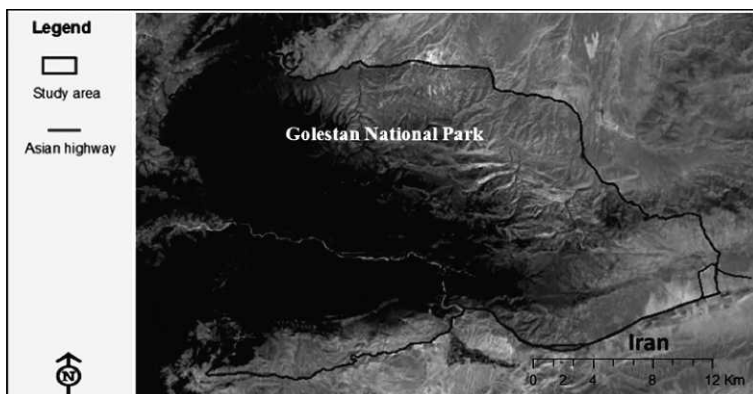
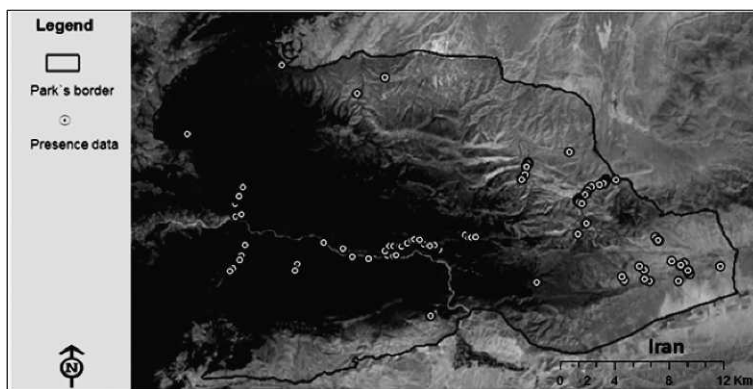


Figure 1. Geographical location of the study area in the Golestan National Park, Iran.

Figure 2. Presence data of the Persian leopard in the GNP, Iran.



(Agili 2005). One of the unresolved problems of the park at the moment is the Asian highway, which runs through the park and divides it into a northern and a southern part, possibly hampering leopard movement (see Fig. 1).

Leopard distribution data

During a one-year field study in 2009, we recorded 120 detailed point locations of the Persian leopard. These distribution data come from field observations and interviews with biologists and park managers from regional environmental agencies and all were verified by visits to the locations at which Persian leopards were reported. Prey species distribution data were also obtained by means of field observations using GPS and map-based interviews with rangers and staff from the environmental office in GNP. Sampling for evidence of Persian leopard presence was done using tracks, scrapes and scats. We only recorded spots carrying certain signs of the Persian leopard being present: each spot was visited, and based on the certainty of the remains or signs of this animal the records were refined. The Persian leopard presence data are shown in Figure 2.

Environmental data

ENFA needs two types of data to calculate habitat suitability: a map of locations where the species has been detected and a set of quantitative raster maps describing the environment as used by the species under investigation. Independent eco-geographical variables (EGV) quantitatively describe relevant characteristics for each grid cell. These may be topographical features (e.g. altitude and slope), ecological data (e.g. frequency of forests and nitrate concentration), or human infrastructures (e.g. distance to the nearest town and road density). A function of the EGV is then calibrated so as to classify

as correctly as possible the cells as suitable or unsuitable for the species. The details of the function and its calibration depend on the analysis (Hirzel et al. 2001). Using expert knowledge and an extensive literature review, we selected 14 variables that might act as direct or surrogate determinants of the current distribution of the Persian leopard in GNP (Table 1): four accounted for environmental traits (habitat structure and geomorphology) and 10 for human impacts and main prey species. Altitude, slope and aspect were calculated from a digital elevation model of 10 m pixel width. The normalised difference vegetation index (NDVI) variable that accounted for habitat structure was derived from Landsat TM images (acquired in August 2007) originally in 30×30 mega pixels. These we then resampled to 10×10 mega pixels. Studies such as Salman Mahini (2007) and Boelman et al. (2011) indicate a positive relationship

Table 1. Variables used in the spatial modelling of Persian leopard habitat in Golestan National Park, Iran.

Variables	Description and sources
GEOMORPHOLOGY	
Altitude	Digital elevation model (DEM)
Slope	Slope steepness (%)
SAspect	Based on DEM
HUMAN IMPACT	
Distance to road (m)	-
Distance to village (m)	-
Distance to spring (m)	-
Distance to river (m)	-
Distance to agricultural land (m)	-
HABITAT STRUCTURE	
NDVI	Based on red and near infrared bands of Landsat TM, 2007
PREY SPECIES	
Goitered gazelle, red deer, wild boar, wild goat and wild sheep	Presence points (interview with game guards in the field)

between NDVI and habitat structure as it shows density of vegetation on the ground. Variables that might potentially account for the human impacts on the Persian leopard territories were distance to road (Asian highway and dirt roads), distance to villages, distance to springs, distance to agricultural lands and distance to rivers. The major prey species of the Persian leopard in the area were goitered gazelle *Gazella subgutturosa*, red deer *Cervus elaphus*, wild boar *Sus scrofa*, wild goat *Capra aegagrus* and wild sheep *Ovis orientalis*. We used the presence points for these prey acquired through interview with game guards in the field.

Topographical data (i.e. altitude, slope and aspect) were quantitative and used directly in the ENFA model, but habitat structure, human impact and prey factors were qualitative and were transformed into frequency and distance variables before calculation (Hirzel et al. 2002). Distance variables expressed the distance between the focal cell and the closest cell belonging to a given category. Frequency variables described the proportion of cells from a given category within a circle of a 150 m radius around the focal cell. This radius was applied within Biomapper during our analyses. After the preparation of environmental variables and conversion of 'Presence' points to raster grids (10×10 mega pixels), the data were normalised through a Box-Cox transformation (Hirzel et al. 2002). The common resolution of the maps used for the analysis was set at 10 m. This resolution represented a trade-off between accuracy and computation time (Chefaoui et al. 2005).

Statistical analysis

Habitat modelling

The ENFA summarises several EGVs in a few uncorrelated factors retaining most of the information similar to principal component analysis (PCA). The ENFA concept has been incorporated into Biomapper 4 (Hirzel et al. 2007) and follows the procedures outlined by Hirzel et al. (2002). The outputs of the ENFA included eigenvalues and factor scores. The first factor, marginality, describes the distance of the species optimum from the ecological conditions in the study area (i.e. the direction in which the species niche differs most from the available conditions in the study area; Hirzel et al. 2002, Santos et al. 2006). The coefficients of the score matrix as related to the marginality factors indicate the correlation between each EGV and the marginality factor. The greater the absolute value of the

coefficient the higher this EGV contributes to the marginality. A low value (close to 0) indicates that the species tend to live in average conditions throughout the study area, whereas a high value (close to 1) indicates a tendency for the species to live in extreme habitats. A positive value means that the species 'prefers' the high values of this EGV, while a negative value means that the species 'prefers' the low values. The subsequent factors are called specialisation factors and are sorted by decreasing amounts of variance accounted for. These factors describe how specialised the species is in comparison to the available range of habitats in the study area (Hirzel et al. 2002, Santos et al. 2006). Therefore, only a few of the first factors explain the major part of the whole information. Specialisation ranges from 1 to infinity and thus is difficult to interpret. For this reason, it is easier to use the tolerance factor, which measures the choosiness of the species to the available range of EGVs. Tolerance is defined as the inverse of specialisation (1/S) and ranges from 0 to 1, indicating either specialist species (stenotic) who tend to live in a very narrow range of conditions or species that inhabit any of the conditions in the study area (euriotic). With the factor scores computed, a habitat suitability map was created using the harmonic algorithm. The number of significant factors included in the habitat suitability map was decided according to the comparison of the eigenvalues to MacArthur's broken-stick distribution, which is the expected distribution when breaking a stick randomly. The eigenvalues that are larger than expected according to the broken stick distribution may be considered 'significant' (Hirzel et al. 2002, Hirzel et al. 2007).

Model validation and accuracy

Before using the ENFA results or habitat suitability map (HSM), we needed to evaluate their accuracy in describing the actual spatial response of the species (Santos et al. 2006). The habitat suitability map was evaluated for predictive accuracy by jackknife cross validation (Boyce et al. 2002).

The species locations were randomly partitioned into k mutually exclusive but identically sized sets. Each k minus 1 partition was used to compute a habitat suitability model and the left-out partition was used to validate it on independent data. This process was repeated k times, each time by leaving out a different partition. This process resulted in k different habitat suitability maps and the comparison of these maps and how they fluctuated, providing an assessment of their predictive power. The number of

partitions used was 10. Each map was reclassified into i bins, where each bin i covered some proportion of the total study area (A_i) and contained some proportion of the validation points (N_i ; validation points were the observations left out during the cross-validation process). We used the default number of bins (i.e. four bins). The area-adjusted frequency for each bin was computed as $F_i = N_i/A_i$. The expected F_i was 1 for all bins if the model fitted no better than random. If the model was good, low values of habitat suitability should have a low F (< 1) and high values a high F (> 1) with a monotonic increase between. The monotonic nature of the curve was measured using a Spearman rank correlation on the F_i in a moving window, termed the continuous Boyce Index (Boyce et al. 2002, Hirzel et al. 2004, Santos et al. 2006, Edgaonkar 2008). The Boyce Index measures the correlation between habitat suitability values and the area-adjusted frequency of presence points in the habitat map. The continuous Boyce Index varies from -1 for an inverse model to 0 for a random model to 1 for a perfect model (Boyce et al. 2002, Hirzel et al. 2006). Finally, the habitat suitability map was reclassified into two classes of suitable and unsuitable, and an approximation of the Persian leopard individuals was assessed in the suitable habitat class.

Results

According to MacArthur's broken-stick distribution (Hirzel et al. 2002), the 14 environmental variables

considered were reduced to 10 factors (Table 2) that explained 94% of the variance. The percentages explained by the specialisation factor can be seen in Table 2. The presence of Persian leopard was positively associated with NDVI, distance to agricultural lands, aspect and presence of wild boar, wild sheep and red deer on the factor explaining marginality (see Table 2), indicating a preference for these variables. Altitude, distance to villages and frequency of goitered gazelle had the higher coefficient of the first factor showing that the distribution of the species was specially restricted by these variables (see Table 2).

According to the ecological model, Persian leopard presented a tendency to occupy very particular conditions compared to the whole of the GNP (marginality score = 0.755 and tolerance factor = 0.642). The 10 factors retained (out of the 14 computed) accounted for 94% of the total sum of eigenvalues (that is, 100% of the marginality and 94% of the specialisation). The marginality factor alone accounted for 23% of the total specialisation, a rather large value, which means that Persian leopard displays a very restricted range in which they utilise habitats quite different from the average conditions present in the study area. A suitability map was built from these 10 factors for the whole case study (Fig. 3). It is interesting to see that the northern areas with steeper slopes and higher elevations present lower quality habitat for the leopards. The habitat suitability index (HSI) ranged between 0 and 100, with 0 indicating the

Table 2. Coefficients of the variables generated in ENFA, and percentages explained by marginality (MF) and specialisation factors (SF1 - SF9). EGVs are sorted by decreasing absolute value of coefficients on the marginality factor. The first column shows 100 percent of marginality. On marginality factor, Positive values (+) indicates that leopards are found in locations with higher than average cell values. Negative values (-) indicate that leopards are found in locations with lower than average cell values. Signs of coefficients have no meaning on the specialisation factors.

EGV	MF	SF1	SF2	SF3	SF4	SF5	SF6	SF7	SF8	SF9
Altitude	-0.43	0.45	0.03	0.13	-0.26	0.07	0.32	0.11	0.27	-0.04
Distance to rivers	-0.38	-0.08	0.13	0.19	0.29	-0.17	0.10	0.07	-0.20	0.26
Frequency of springs	-0.36	-0.06	-0.01	-0.11	0.06	0.01	0.25	0.13	0.03	0.09
Distance to roads	-0.36	-0.10	0.15	-0.41	0.22	0.02	-0.26	-0.64	0.05	-0.05
Frequency of wild goat	0.31	-0.31	0.46	-0.09	-0.27	0.22	0.38	0.26	-0.35	-0.02
Distance to agricultural lands	0.26	0.46	0.34	0.00	-0.57	-0.04	-0.30	0.18	-0.28	-0.12
Frequency of goitered gazelle	-0.25	0.41	0.01	-0.48	-0.33	-0.54	0.07	0.24	0.20	-0.28
Frequency of wild boar	0.24	0.02	0.42	0.00	0.31	-0.11	0.28	0.10	-0.33	0.24
Frequency of wild sheep	0.22	0.15	0.28	0.35	0.10	-0.30	0.04	0.25	0.34	-0.18
Frequency of red deer	0.19	-0.35	0.04	0.06	-0.11	-0.02	0.48	-0.37	-0.07	-0.51
Slope	-0.17	-0.02	0.02	-0.02	0.10	0.01	-0.30	0.26	-0.31	-0.42
Distance to villages	-0.07	0.39	0.35	0.24	-0.37	-0.09	-0.25	0.07	-0.33	0.40
Aspect	0.06	-0.03	0.05	-0.52	-0.14	-0.36	0.03	0.17	0.08	0.08
NDVI	0.05	-0.06	0.51	-0.27	0.10	0.62	-0.23	0.32	0.45	0.36

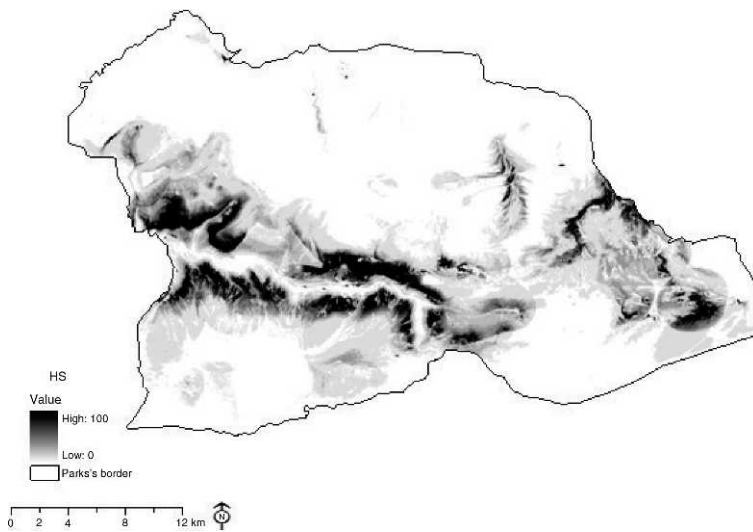


Figure 3. Habitat suitability map for the Persian leopard in GNP, as computed from ENFA. The scale shows the habitat suitability values (0 the least suitable, and 100 the most suitable).

least suitable habitat and 100 the most suitable. The predictive accuracy of the model was good as the area-adjusted frequency cross validation exhibited values below and above 1 for the low and high suitability bins, respectively. Also, the mean Spearman rank correlation was 0.8. Using the F curve, the habitat suitability map was reclassified into two classes, 'suitable' and 'unsuitable' (Fig. 4). The HS values > 2 are considered as suitable class. These areas suitable for the Persian leopard are located in the west, central and southeast of the GNP. Also, the unsuitable class was assigned to HSI values ranging from 0 to 2. Our results reveal that the suitable habitat for the Persian leopard comprises an area of 189 km² with an average

altitude of 1,234 m and a slope of 32%. Furthermore, the marginality and specialisation scores show that the Persian leopard lives in very particular conditions in this area. Referring to previous studies about panther home-range size by Kiabi et al. (2002), if we choose 15 km² as the lowest estimate of the animal's home range, then there would be around 13 Persian leopards in the area. For the highest estimate of the range size, i.e. 78 km², the number of Persian leopards would be only around two. Based on the field observations, habitat assessment and the interviews with experienced wildlife guards, we suggest that the actual number of the panthers is somewhere in between two and 13.

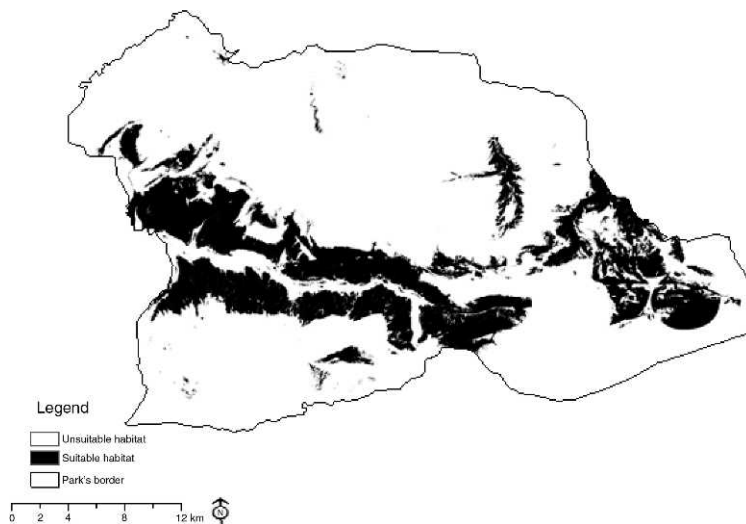


Figure 4. Reclassified habitat suitability map for the Persian leopard in GNP, as computed from ENFA.

Discussion

Here we present the first study on Persian leopard's habitat suitability in GNP. Our analysis directly provides two key measurements regarding the niche of the focal species (i.e. marginality and specialisation factors). Furthermore, interpretation of the factors in terms of the EGVs turns out to be very consistent with the published literature as particularly relevant for Persian leopard ecology (Hirzel et al. 2002).

According to the habitat suitability analyses carried out and the environmental niche descriptions, we calculated that the habitat suitable for the Persian leopard comprises an area of 189 km², averaging 1,234 m in altitude and a slope of 32% encompassing the western, central and southeastern parts of the GNP. Because spatial autocorrelation of the presence data can cause biases in model predictions (Jimenez-Valverde et al. 2008), we checked for autocorrelation among input parameters in the model, but it was not significant.

The presence of Persian leopards had a weak negative association with the distance to villages. Leopards are known to be bold and are commonly found in the proximity of human settlements, where they prey upon livestock (Odden & Wegge 2005). These results are in agreement with previously reported data on Persian leopard habitat use (Omidi 2008, Edgaonkar 2008, Ghoddousi et al. 2008, Farhadinia et al. 2007). In our study, wild goat had the strongest positive association with Persian leopard occurrence. One of the main concerns for the conservation of Persian leopards is habitat fragmentation due to human land use (Acevedo et al. 2007). We feel that this is also an issue in the GNP. Among human interferences, the Asian highway may presumably have the largest negative impact on the Persian leopard's habitat and cause additional mortality because it runs through the park which likely restricts the movements of the Persian Leopard. Part of the prey items for Persian leopard in the GNP are found in the southern section which is divided by this highway. So, the Persian leopard is forced to cross the Asian highway to obtain food, causing collisions with the traffic. In our study area, road accidents and casualties are frequent, suggesting that the negative impact of the main road of the GNP might be significant. As suggested by marginality factor coefficients, watercourses (i.e. springs and rivers) are important habitat parameters for leopard and may restrict its presence. The occurrence of Persian

leopard had a low correlation with other parameters such as aspect, NDVI, agricultural lands, wild boar, wild sheep and red deer. Overall, the habitat suitability map represents an overlap between the best habitat for Persian leopard, its preys' habitat (goitered gazelle, red deer, wild boar, wild goat and wild sheep) and leopard observations in this region during the last years.

As Hirzel et al. (2002) suggested, ENFA is a purely descriptive method and cannot extract causal relations. Nonetheless, it provides (at worst) important clues about preferential conditions, and remains a powerful tool to draw potential habitat maps. In this respect, a limitation of the software is that it does not yet provide confidence intervals for distribution maps. Increasingly, conservation managers are demanding risk analyses that incorporate uncertainties in model predictions. These could clearly be obtained through the boot strapping of presence data. Though not yet implemented in Biomapper, this procedure will certainly provide an important and useful extension. A second limitation, less easy to deal with, is that ENFA only handles linear dependencies within the species niche. Multiplicative or non-linear interactions cannot be accommodated in the present approach, except through transformations or non-linear combinations of the original ecogeographical variables. A third limitation is that some EGVs may turn out to be constant in specialisation or in linear combination with other EGVs, which makes species covariance matrix (R_s) singular. This is likely to happen with coarsely measured data or small species data sets. Whenever this happens, Biomapper identifies the constant or correlated EGVs and removes (one of) them from the analysis. An alternative approach would obviously consist in improving the field sample either by increasing the presence data set or by measuring EGVs on a finer scale. Finally, a last important point to emphasise is that our approach characterises ecological niches relative to a reference area. Marginality and specialisation are thus bound to depend on the geographic limits of the study area. Some species may turn out to occur at the very edge of their distribution, and may thus appear quite specialised in the reference set, however widespread they might be otherwise. The niche description methodology derived by Chefaoui et al. (2005), based on such premises, is used in this study to describe the realised niches of panther in GNP. However, ENFA results usually overestimate habitat suitability (Zaniewski et al. 2002, Engler et al. 2004, Acevedo et al. 2007).

In conclusion, understanding the habitat selection processes of wide-ranging large carnivores such as the Persian leopard and thus the likely consequences of habitat transformation is essential for developing conservation strategies to improve long-term viability. Our analyses demonstrate that ENFA is a useful tool to explore the characteristics of the Persian leopard's niche as well as to produce habitat suitability maps that can aid conservation management. Our results indicate that Persian leopard distribution in our study area may be especially constrained by human impacts. Our analysis suggests that the Asian highway fragments Persian leopard habitat and causes death due to road accidents.

In order to protect Persian leopards and their habitats, we suggest several conservation approaches in this region. Firstly, preventing habitat destruction and road widening are important for securing viability of the species. Secondly, habitat connectivity and wildlife corridors such as overpasses and underpasses between isolated habitats can be used to reduce the negative effects of roads and road mortality on wildlife populations and especially the Persian leopard. Thirdly, measures such as ecological compensation need to be carried out to improve the livelihood of local residents, which will decrease the influence of human activity and improve the quality of Persian leopard habitats. Finally, the viability of Persian leopard populations will be enhanced by preserving its preferred types of habitat. More research is needed to understand spatial connectivity and population dynamics of the Persian leopard.

Acknowledgements - we express our gratitude to Editor-in-Chief Ilse Storch and especially Associate Editor John P. Ball for their careful reviewing, editing and useful comments and suggestions on a previous version of our manuscript. We also thank the Iranian Department of the Environment (DoE), particularly the Golestan Provincial Office of DoE, which provided logistical and financial support for field surveys.

References

Acevedo, P., Alzaga, V., Cassinello, J. & Gortazar, C. 2007: Habitat suitability modelling reveals a strong niche overlap between two poorly known species, the broom hare and the Pyrenean grey partridge, in the north of Spanish. - *Acta Oecologica* 31: 174-184.

Agili, A. 2005: Leopard survey in northeast part of Iran. - Leopard conservation society, Centre for Sustainable Development (CENESTA), Iran department of environment, natural environmental and biodiversity division, 33 pp.

Boelman, N.T., Gough, L., McLaren, J.R. & Greaves, H. 2011: Does NDVI reflect variation in the structural attributes associated with increasing shrub dominance in arctic tundra? - *Environmental Research, Letter* 6 (3); DOI-number; 10.1088/1748-9326/6/3/035501.

Boyce, M.S., Vernier, P.R., Nielsen, S.E. & Schmiegelow, F.K.A. 2002: Evaluating resource selection functions. - *Ecological Modelling* 157: 281-300.

Braunisch, V., Bollmann, K., Graf, R.F. & Hirzel, A.H. 2008: Living on the edge-modeling habitat suitability for species at the edge of their fundamental niche. - *Ecological Modelling* 214: 153-167.

Chefaoui, R.M., Hortal, J. & Lobo, J.M. 2005: Potential distribution modelling, niche characterization and conservation status assessment using GIS tools: a case study of Iberian Copris species. - *Biological Conservation* 122: 327-338.

Edgaonkar, A. 2008: Ecology of the leopard (*Panthera pardus*) in Bori wildlife sanctuary and Satpura national park, India. - PhD thesis, University of Florida, Florida, USA, 135 pp.

Engler, R., Guisan, A. & Rechsteiner, L. 2004: An improved approach for predicting the distribution of rare and endangered species from occurrence and pseudo-absence data. - *Journal of Applied Ecology* 41: 263-274.

Farhadinia, M.S., Mahdavi, A. & Hosseini-Zavarei, F. 2009: Reproductive ecology of Persian leopard, *Panthera pardus saxicolor*, in Sarigol National Park, northeastern Iran. - *Zoology in the Middle East* 48: 14-16.

Farhadinia, M.S., Nezami, B., Mahdavi, A. & Hatami, K. 2007: Photos of Persian leopard in Alborz Mountains, Iran. - *Cat News* 46: 34-35.

Fumagalli, M. 2007: *Panthera pardus*: The Leopard. - Available at: <http://www.Terrasco.net> (Last accessed on 20 April 2010).

Ghoddousi, A., KhaleghiHamidi, A.M., Ghadirian, T., Ashayeri, D., Hamzehpour, M., Moshiri, H., Zohrabi, H. & Julayi, L.I. 2008: Territorial marking by Persian Leopard (*Panthera pardus saxicolor* Pocock, 1927) in Bamu National Park. - *Zoology in Middle East* 44: 101-103.

Google Earth 2010: Google Earth explores, search and discover, Version 4. - Available at: <http://earth.google.com/download-earth.html> (Last accessed on 20 November 2011).

Guisan, A. & Zimmermann, N.E. 2000: Predictive habitat distribution models in ecology. - *Ecological Modelling* 135: 147-186.

Hirzel, A.H., Hausser, J., Chessel, D. & Perrin, N. 2002: Ecological niche factor analysis: How to compute habitat-suitability maps without absence data? - *Ecology* 83: 2027-2036.

Hirzel, A.H., Hausser, J. & Perrin, N. 2007: Biomapper 4.0. - Laboratory for Conservation Biology, Department of Ecology and Evolution, University of Lausanne, Switzerland. Available at: <http://www.2.unil.ch/biomapper> (Last accessed on 10 November 2010).

- Hirzel, A., Helfer, V. & Me'tral, F. 2001: Assessing habitat-suitability models with a virtual species. - *Ecological Modelling* 145: 111-121.
- Hirzel, A.H., LeLay, G., Helfer, V., Randin, C. & Guisan, A. 2006: Evaluating the ability of habitat suitability models to predict species presences. - *Ecological Modelling* 199: 142-152.
- Hirzel, A.H., Posse, B., Oggier, P.A., Crettenand, Y., Glenz, C. & Arlettaz, R. 2004: Ecological requirements of a reintroduced species, with implications for release policy: the Bearded vulture recolonizing the Alps. - *Journal of Applied Ecology* 41: 1103-1116.
- Javanshir, K. 1976: Atlas of Woody Plants of Iran. - National Society of Natural Resources and Human Environment Conservation, Tehran, Iran, 163 pp. (In Persian).
- Jimenez-Valverde, A., Labolo, J.M. & Hortal, J. 2008: Not as good as they seem: the importance of concepts in species distribution modelling. - *Diversity and Distributions* 14: 885-890.
- Khorozyan, I. 2008: Research and conservation of the Persian leopard (*Panthera pardus saxicolor*) in Bamu National Park Fars Province, Iran. - Plan for the Land Society, Iran, 19 pp.
- Khorozyan, I., Malkhasyan, A. & Asmaryan, S. 2005: The Persian Leopard Prowls Its Way to Survival. - *Endangered Species UPDATE* 22 (2): 51-60.
- Kiabi, H.B., Dareshouri, F.B. Ghaemi, A. & Jahanshahi, M. 2002: Population status of the Persian leopard (*Panthera pardus saxicolor* Pocock, 1927) in Iran. - *Zoology in the Middle East* 26: 41-47.
- LeLay, G., Clergeau, P. & Hubert-Moy, L. 2001: Computerized map of risk to manage wildlife species in urban areas. - *Environmental Management* 27: 451-461.
- Madjnoonian, H., Zehzad, B., Kiabi, B., Darrehshoori, B.F. & Meigouni, H.G. 1999: Golestan National Park: biosphere reserve. - Department of the Environment of Iran, Tehran, Iran, 129 pp. (In Persian).
- Salman Mahini, A. 2007: Patch metrics as surrogates of structural complexity of remnant vegetation. - Proceedings of the 9th International Conference on Geocomputation, National Centre for Geocomputation National University of Ireland, Maynooth, Ireland, 7 pp.
- Odden, M. & Wegge, P. 2005: Spacing and activity patterns of leopards *Panthera pardus* in the Royal Bardia National Park, Nepal. - *Wildlife Biology* 11(2): 145-152.
- Omidi, M. 2008: Analyzing and modelling spatial distribution of leopard (*Panthera pardus saxicolor*) in Kolehghazi National Park, In Isfahan Province. - M.Sc. thesis, College of Environmental Science, Islamic Azad University Science And Research Campus , Tehran, Iran, 95 pp. (In Persian).
- Robertson, M.P., Caithness, N. & Villet, M.H. 2001: A PCA-based modelling technique for predicting environmental suitability for organisms from presence records. - *Diversity and Distributions* 7: 15-27.
- Rood, E., Ganie, A.A. & Nijiman, V. 2010: Using presence-only modelling to predict Asian elephant habitat use in a tropical forest landscape: implications for conservation. - *Diversity and Distributions* 16: 975-984.
- Sanei, A. 2007: Analysis of leopard (*Panthera pardus*) status in Iran (No.1). - Tehran, Sepehr Publication Centre, Iran, 298 pp. (In Persian).
- Santos, X., Brito, J.C., Sillero, N., Pleguezuelos, J.M., Liorente, G.A., Fahd, S. & Parellada, X. 2006: Inferring habitat suitability areas with ecological modelling techniques and GIS: A contribution to assess the conservation status of *Vipera latastei*. - *Biological Conservation* 130: 416-425.
- Titeux, N. 2006: Modeling species distribution when habitat occupancy departs from suitability: Application to birds in a landscape context. - PhD thesis, Université Catholique de Louvain École Doctorale en Biodiversité, Belgium, 258 pp.
- Zaniewski, A.E., Lehmann, A. & Overton, J. McC. 2002: Predicting species spatial distributions using presence-only data: a case study of native New Zealand ferns. - *Ecological Modelling* 57: 261-280.