

## **Change in the Guild Structure of a Snake Community in Japan over 30 Years**

Authors: Sawada, Kiyoto, and Kadowaki, Seishi

Source: Current Herpetology, 42(1) : 74-82

Published By: The Herpetological Society of Japan

URL: <https://doi.org/10.5358/hsj.42.74>

---

The BioOne Digital Library (<https://bioone.org/>) provides worldwide distribution for more than 580 journals and eBooks from BioOne's community of over 150 nonprofit societies, research institutions, and university presses in the biological, ecological, and environmental sciences. The BioOne Digital Library encompasses the flagship aggregation BioOne Complete (<https://bioone.org/subscribe>), the BioOne Complete Archive (<https://bioone.org/archive>), and the BioOne eBooks program offerings ESA eBook Collection (<https://bioone.org/esa-ebooks>) and CSIRO Publishing BioSelect Collection (<https://bioone.org/csiro-ebooks>).

Your use of this PDF, the BioOne Digital Library, and all posted and associated content indicates your acceptance of BioOne's Terms of Use, available at [www.bioone.org/terms-of-use](http://www.bioone.org/terms-of-use).

Usage of BioOne Digital Library content is strictly limited to personal, educational, and non-commercial use. Commercial inquiries or rights and permissions requests should be directed to the individual publisher as copyright holder.

---

BioOne is an innovative nonprofit that sees sustainable scholarly publishing as an inherently collaborative enterprise connecting authors, nonprofit publishers, academic institutions, research libraries, and research funders in the common goal of maximizing access to critical research.

# Change in the Guild Structure of a Snake Community in Japan over 30 Years

KIYOTO SAWADA<sup>1,\*</sup> AND SEISHI KADOWAKI<sup>2</sup>

<sup>1</sup>Graduate School of Life and Environmental Sciences, University of Tsukuba, Ten-nodai  
1-1-1, Tsukuba, Ibaraki 305-8572, JAPAN

<sup>2</sup>Tsukuba Experimental Forest, Mountain Science Center, University of Tsukuba, Ten-nodai  
1-1-1, Tsukuba Ibaraki 305-8572, JAPAN

**Abstract:** Long-term field studies have provided evidence of worldwide declines in vertebrate populations, including amphibians and reptiles. However, studies investigating the decline in snake populations are scarce. As obligate predators, snakes play important roles in local ecosystems and are in turn affected by their food resources. In the present study we investigated the seasonal abundance of snakes and their food habits in a rice paddy field and compared the results of the present study with those of a previous study that was conducted at the same site approximately 30 years ago. Our results showed that *Elaphe quadrivirgata*, a dietary generalist snake that had been one of the dominant species at the site, has drastically declined and that *Rhabdophis tigrinus* and *Gloydus blomhoffii* have remained as dominant species. Furthermore, in the present study, most of the stomach contents of *R. tigrinus* consisted of the Japanese tree frog, *Dryophytes japonicus*, whereas three frog species, *D. japonicus*, *Rana japonica*, and *Pelophylax porosus porosus*, had been the main prey of *R. tigrinus* 30 years ago. In addition, fewer individuals of *R. tigrinus* and *G. blomhoffii* contained food in their stomachs than 30 years ago. Our findings imply that a change in prey availability may have affected the guild structure of snakes at this study site, although further investigation is necessary to verify the reasons for the decline of the dietary generalist, *E. quadrivirgata*.

Key words: Food habit; Long-term study; Snake population; Species diversity loss

## INTRODUCTION

Long-term field studies have provided evidence of worldwide declines in vertebrate populations, including amphibians and reptiles (e. g., Brashares et al., 2014; Brodie et al., 2021).

Some of these cases of population declines can be directly attributed to the factors such as pollution (Harshbarger et al., 2000; Lionetto et al., 2021), habitat loss or change (Feyrer et al., 2007; Huang et al., 2018), disease (LaDeau et al., 2007; Scheele et al., 2019), over-exploitation (Whitehead et al., 1997; Chen et al., 2020), invasion of alien species (Lowe et al., 2000; Marshall et al., 2018), and climate change (Reading et al., 2010; Warren et al.,

---

\* Corresponding author.

E-mail address: kiyoto.3816@gmail.com

2018). Although several studies on lizard and turtle populations have shown that populations have been declining, evidence for decline in snake populations is scarce (Gibbons et al., 2000; Böhm et al., 2013; Saha et al., 2018). Consequently, there is a consensus among herpetologists that more research is needed on snake population dynamics (Seigel and Mullin, 2009). Reading et al. (2010) reported that approximately 17 snake populations (eight species) have declined in Europe, Africa, and Oceania between 1987 and 2009. They identified habitat degradation and a decrease in food resource availability as the likely factors that caused these declines, but clear evidence was not found.

As obligate predators, snakes play an important role in local ecosystems (Arnold, 1978; Beaupre and Douglas, 2009). Their ecological traits, such as body size, activity time, and population fluctuations, are largely influenced by their food resources (Madsen and Shine, 2000; Madsen et al., 2006; Wolfe et al., 2018). Frogs are the major food sources for some snakes and are easily affected by environmental disturbances. Frogs are often used as bioindicators, to assess short-term environmental change (Lindstedt, 2005). In contrast, snake populations are believed to be excellent long-term bioindicators of environmental change (Beaupre and Douglas, 2009). This view can be attributed to the relative stability of home ranges of most snakes over the course of their lifetimes; the ability of snakes to survive in low-energy environments; the use of different habitats during periods of hibernation, foraging, mate searching, and gestation or oviposition; and their low susceptibility to temporary environmental changes (Bauerle et al., 1975; Scott and Seigel, 1992; Beaupre and Douglas, 2009). Therefore, change in a snake population may reflect a major long-term environmental change. However, little is known about the long-term dynamics of snake populations (e.g., Fitch, 2006; Capula et al., 2016; Storniolo et al., 2019).

In Japan, several studies have been conducted regarding seasonal change in snake popula-

tions in relation to food resources (e.g., Moriguchi and Naito, 1982; Kadowaki, 1992; Tanaka and Ota, 2002; Hirai, 2004; Mori and Nagata, 2016). However, only one study, Fukada (1992), is available as a long-term study in mainland Japan. Fukada (1992) conducted the study for 16 years, until it was terminated due to industrialization of the survey area. The second-longest survey was conducted by Kadowaki (1996) over a 5-year period, and the environment of that study area has not changed substantially since his study (Fig. 1). In the present study we investigated snake species composition and food habits at the same study site as Kadowaki (1996), which was conducted approximately 30 years ago, and compared our data with those obtained in the previous study.

## MATERIALS AND METHODS

### *Study site*

A field survey was conducted in the rice paddy field (approximately 53.4 ha) at the foot of Hokyo-San Mountain in Tsukuba City (36°09'16" N, 140°07'22" E), located in the center of the main island of Japan, Honshu. The southern side of the area is bordered by paved roads, and the eastern, western, and northern sides are surrounded by secondary forests dominated by sawtooth oak (*Quercus acutissima*), konara oak (*Quercus serrata*), and Japanese red pine, (*Pinus densiflora*) (Fig. 1). The survey area mainly consisted of rice paddy fields, with smaller areas of cultivated land, poultry farms, grasslands, ponds, and streams.

### *Field survey*

The field surveys were conducted twice a week from April to November (spring to autumn) in 2019 and 2020. In total, 113 surveys were made, during the daytime on sunny or cloudy days. Each survey took approximately 4 hours.

Any snake encountered was captured by hand, and the date and time were recorded. Species and sex of the captured snakes were noted. They were measured for snout-vent

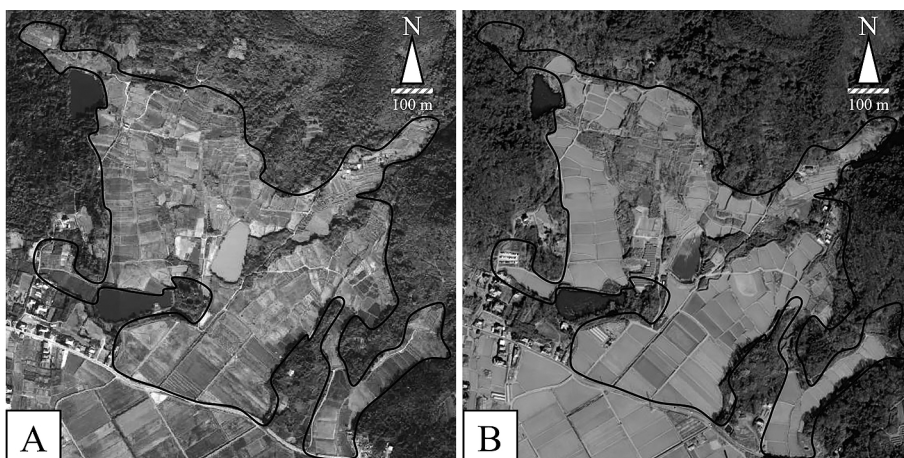


FIG. 1. Satellite maps of the study site around (A) 1990 and (B) 2020.

Study area is surrounded by the black line. The sources of the maps are (A) Geospatial Information Authority of Japan (<https://maps.gsi.go.jp/help/intro/looklist/2-nendai.html>) and (B) OpenStreetMap (<https://www.openstreetmap.org/edit#map=16/36.1538/140.1243>). The contrast of the map in panel (A) has been slightly increased from the original to facilitate comparison.

length (SVL), to the nearest 1 mm, and body mass (BM), to the nearest 1 g, and they were forced to regurgitate for the examination of any stomach contents. Finally, snakes were individually marked by clipping subcaudal scales (Blanchard and Finster, 1933) and released at their capture sites.

The regurgitated food items were identified to the species level, whenever possible. The identified food items were classified into two categories: food type (e.g., mammals, lizards, and frogs) and species. In principle, one prey item in the stomach content from a snake was counted as one predation case. However, tadpoles and froglets immediately after metamorphosis found from a single stomach content were treated as a single predation case, because they had likely been concentrated at one spot and could be regarded as a single mass of food.

#### Statistical analysis

We applied Fisher's exact test for the comparison of snake species composition and food items between the data obtained in the present study and those in Kadowaki (1996). Similarly, a t-test was used to compare SVL and BM between our new data and the previous data

(Kadowaki, 1996). The statistical error rate was set at  $P=0.05$ . The body condition index ( $=BM/SVL^3$ ) of each snake and the proportion of snakes containing food items for each species were calculated. R Studio Desktop 1.3.1093 (for Windows 10/8/7) was used for the statistical analyses.

## RESULTS

#### Species composition

Five snake species were recorded during the study period, namely *Rhabdophis tigrinus* (53.0%,  $n=122$ ), *Gloydus blomhoffii* (26.5%,  $n=61$ ), *Elaphe climacophora* (12.6%,  $n=29$ ), *Hebius vibakari* (7.4%,  $n=17$ ), and *Lycodon orientalis* (0.4%,  $n=1$ ) (Table 1). The number of snakes captured, including recaptures, was 184, 85, 45, 19, and 2 for *R. tigrinus*, *G. blomhoffii*, *E. climacophora*, *H. vibakari*, and *L. orientalis*, respectively. Compared with Kadowaki (1996), the species composition was significantly different ( $P<0.01$ ). In particular, no *E. quadrivirgata* were observed in the present study. Similarly, *Euprepiophis conspicillatus*, reported in Kadowaki (1996), was not observed in the present study. *Lycodon orienta-*

TABLE 1. Species composition of snakes in the 1988–1992 and 2019–2020 studies. n: number of captured individuals, excluding recaptures. The data of 1988–1992 are from Kadowaki (1996). Numerals in parentheses indicate the average number of snakes (excluding recaptures) captured per census.

Species	1988–1992		2019–2020	
	n	Frequency (%)	n	Frequency (%)
<i>Rhabdophis tigrinus</i>	184 (0.684)	42.6	122 (1.080)	53.0
<i>Elaphe quadrivirgata</i>	148 (0.550)	34.3	0 (0)	0.0
<i>Gloydus blomhoffii</i>	59 (0.219)	13.7	61 (0.540)	26.5
<i>Elaphe climacophora</i>	27 (0.100)	6.3	29 (0.257)	12.6
<i>Euprepiophis conspicillata</i>	10 (0.037)	2.3	0 (0)	0.0
<i>Hebius vibakari</i>	4 (0.015)	0.9	17 (0.150)	7.4
<i>Lycodon orientalis</i>	0 (0)	0.0	1 (0.009)	0.4
Total	432 (1.606)	100.0	230 (2.035)	100.0

TABLE 2. Comparison of snout-vent length (SVL), body mass (BM), and body condition index of *Rhabdophis tigrinus* and *Gloydus blomhoffii* between the two study periods (1988–1992 and 2019–2020). The data for 1988–1992 are from Kadowaki (1996). \*P<0.05.

Variables	Species	Sex	1988–1992		2019–2020		t	df	P
			n	Mean±SD	n	Mean±SD			
SVL (mm)	<i>R. tigrinus</i>	Male	80	563±99	53	536±145	1.187	83.9	0.238
		Female	101	656±148	71	649±157	0.284	145	0.777
	<i>G. blomhoffii</i>	Male	60	412±53	25	423±48	-1.018	37.1	0.315
		Female	50	462±29	34	437±60	2.214	45.7	0.032*
BM (g)	<i>R. tigrinus</i>	Male	81	65.9±25.8	53	60.2±44.5	0.836	75.1	0.406
		Female	104	119.0±90.0	71	112.5±69.6	0.537	170.3	0.592
	<i>G. blomhoffii</i>	Male	10	46.1±17.0	24	51.8±14.7	-0.989	16.2	0.337
		Female	49	82.1±22.7	34	64.6±25.3	3.209	65.3	0.002*
Body condition index*	<i>R. tigrinus</i>	Both sexes	263	0.036±0.008	122	0.036±0.010			
	<i>G. blomhoffii</i>	Both sexes	60	0.079±0.016	61	0.070±0.013			

\* Statistical analysis for body condition index was not performed since Kadowaki (1996) only showed mean±SD.

*lis*, which was not observed in the previous study, was found during the present survey; one individual of this species was found at 1140 h on 15 May 2019 and at 1130 h on 20 May 2019, both times under a metal sheet.

#### Ecological characteristics of snake species

SVL was not significantly different in *R. tigrinus* for both sexes between the present and 1988–1992 studies (males:  $t=1.187$ ,  $df=83.9$ ,

$P=0.238$ ; females:  $t=0.284$ ,  $df=145.0$ ,  $P=0.777$ ; Table 2). For *G. blomhoffii*, SVL of males did not differ significantly between the studies ( $t=1.018$ ,  $df=37.1$ ,  $P=0.315$ ; Table 2), whereas females showed significant differences ( $t=2.214$ ,  $df=45.7$ ,  $P=0.032$ ; Table 2). BM did not differ significantly in *R. tigrinus* for both sexes between the studies (males:  $t=0.836$ ,  $df=75.1$ ,  $P=0.406$ ; females:  $t=0.537$ ,  $df=170.3$ ,  $P=0.592$ ; Table 2). For *G. blomhoffii*, BM of

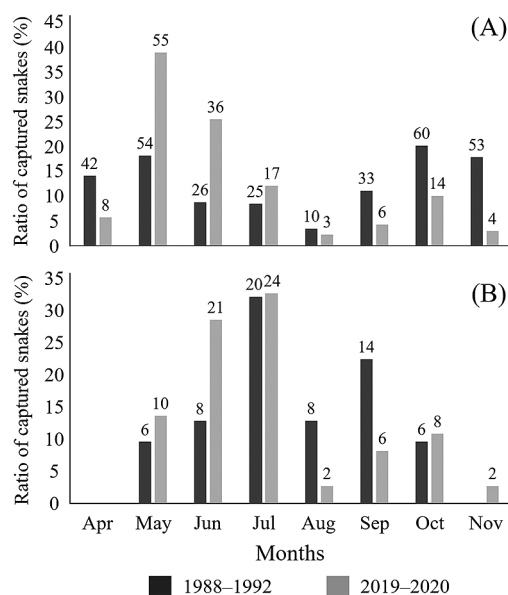


FIG. 2. Seasonal changes in the occurrence of (A) *Rhabdophis tigrinus* and (B) *Gloydius blomhoffii* in 1988–1992 and 2019–2020. Ratio of captured snakes indicates the percentage of snakes captured by month, with the entire year comprising 100%. Numerals above bars are the number of captured snakes, including recaptures. The data of 1988–1992 are from Kadowaki (1996).

males did not differ significantly between the studies ( $t=0.989$ ,  $df=16.2$ ,  $P=0.337$ ; Table 2), whereas females showed significant differences ( $t=3.209$ ,  $df=65.3$ ,  $P=0.002$ ; Table 2). Mean body condition indices of *R. tigrinus* and *G. blomhoffii* were 0.036 and 0.079 in the 1988–1992 study and 0.036 and 0.070 in the present study, respectively (Table 2).

In each year, *R. tigrinus* was observed for the first time between the end of March and the beginning of April in the 1988–1992 study, whereas that species was first sighted on 29 April 2019 and 16 April 2020 in the present study. No clear difference was observed in the first day of sighting of *G. blomhoffii* between the two studies. The seasonal activity pattern of *R. tigrinus* showed a large peak in May and small peak in October, although there had been a large peak in both May and October in the previous study (Fig. 2A). The seasonal activity

pattern of *G. blomhoffii* showed a large peak in July and small peak in October in the present study (Fig. 2B).

In *R. tigrinus* there was no significant difference in the proportion of food-type categories in the stomach contents between the 1988–1992 and 2019–2020 studies ( $P=0.099$ ; Table 3). The difference also was not significant in *G. blomhoffii* ( $P=0.22$ ; Table 3). However, there were significant differences in the composition of frog species between the present and 1988–1992 studies, both in *R. tigrinus* ( $P<0.001$ ) and *G. blomhoffii* ( $P=0.037$ ). In the previous study *R. tigrinus* fed on *Dryophytes japonicus*, *Rana japonica*, and *Pelophylax porosus porosus*, but of these species only *D. japonicus* was found in stomach contents in the present study (Table 3). Furthermore, *Lithobates catesbeianus*, an invasive alien frog species, was observed in the stomach contents of both *R. tigrinus* and *G. blomhoffii* in the present study (Table 3). In both *R. tigrinus* and *G. blomhoffii*, the proportion of snakes that contained food in their stomachs decreased to approximately 10%, compared to about 20–25% in the previous study (Table 4).

## DISCUSSION

Our results showed a remarkable decline in *E. quadrivirgata*, which had been one of the dominant species at the study site 30 years ago, whereas *R. tigrinus* and *G. blomhoffii*, which had also been dominant at the site 30 years ago, did not show such a decline. *Elaphe quadrivirgata* is known to be a dietary generalist predator on vertebrates (Hasegawa and Moriguchi, 1989; Fukada, 1992; Kadowaki, 1992; Tanaka and Ota, 2002). Although many studies have reported that *E. quadrivirgata* feeds mainly on frogs (e.g., Fukada, 1992; Kadowaki, 1992), several studies have shown that the snake feeds on lizards as its main food in island environments (e.g., Hasegawa and Moriguchi, 1989; Tanaka and Ota, 2002). Theory predicts that generalists are more resistant to environmental changes than specialists, and empirical studies have supported this prediction (Angermeier,

TABLE 3. Food habits of *Rhabdophis tigrinus* and *Gloydius blomhoffii* in 1988–1992 and 2019–2020. The number of individual prey items is shown, except for tadpoles and metamorphosed froglets, for which the number of snakes that contained those prey items is counted. The data of 1988–1992 are from Kadowaki (1996).

Food type	Frog species	<i>R. tigrinus</i>		<i>G. blomhoffii</i>	
		1988–1992	2019–2020	1988–1992	2019–2020
Frog	<i>Dryophytes japonicus</i>	48	22	0	0
	<i>Rana japonica</i>	32	0	4	1
	<i>Pelophylax porosus porosus</i>	31	0	2	0
	<i>Zhangixalus schlegelii</i>	3	1	0	0
	<i>Bufo japonicus</i>	2	1	0	0
	<i>Lithobates catesbeianus</i>	0	2	0	1
	Unidentified tadpoles	0	1	0	3
Mammal	—	0	0	4	1
Lizard	—	0	0	0	2
Snake	—	0	0	1	1
Fish	—	1	2	3	0
Total		117	29	14	9

TABLE 4. The proportion of snakes that contained food in their stomachs. The data for 1988–1992 are from S. Kadowaki (personal communication).

Species	1988–1992		2019–2020	
	n	Frequency (%)	n	Frequency (%)
<i>Rhabdophis tigrinus</i>	263	25.30	122	11.41
<i>Gloydius blomhoffii</i>	60	20.97	61	10.59

1995; Terraube et al., 2011). However, our finding of the decline in a dietary generalist contradicts this theoretical prediction. On the other hand, many studies have reported declines in an entire snake community, including communities that consist of a single species (e.g., Santos and Llorente, 2009; Li et al., 2013; Graitson et al., 2019; Tolley et al., 2019). Only a few studies have shown a decline limited to a certain species in a larger snake community (e.g., Croshaw et al., 2019; Storniolo et al., 2019). Considering that large-scale disturbances, such as overhunting and urbanization, which can have catastrophic direct impacts on a snake community, did not occur at the present study site, it is possible that the decline of a single species of snake is a

consequence of other factors, which are currently unknown.

Compared to the previous study (Kadowaki, 1996), *R. tigrinus*, which is known as an anuran-eater (Fukada, 1992; Kadowaki, 1992; Hirai, 2004; Mori and Nagata, 2016), showed a marked bias in the frog species composition in its diet, and a decrease in the proportion of snakes with stomach contents was observed. *Gloydius blomhoffii*, which is known as a dietary generalist that consumes frogs, reptiles, and mammals (Hamanaka et al., 2014; Mori, 2021), also showed a decrease in the proportion of snakes with stomach contents. In addition, both *R. tigrinus* and *G. blomhoffii* contained *L. catesbeianus*, an exotic frog species, in their diets. These results may imply

that the species diversity of native frogs and abundance of food resources (frogs, reptiles, and small mammals) that were previously exploited by *R. tigrinus* and *G. blomhoffii* have decreased since the time when the previous study was conducted.

In the present study, the stomach contents of *R. tigrinus* were dominated by *D. japonicus* at 75.9%, whereas *R. japonica* and *P. porosus* were not detected. This prey composition may reflect the seasonal activity pattern of the snakes observed in the present study: high in May and June and low in October, compared to the previous study of 1988–1992. In general, snake activity pattern is strongly influenced by food resources (Madsen and Shine, 2000; Madsen et al., 2006, Wolfe et al., 2018). To evaluate the relationship between the activity pattern of *R. tigrinus* and its anuran prey, a further survey of seasonal prey abundance is needed.

In summary, our study showed that *E. quadrivirgata* had drastically decreased over approximately 30 years. This snake is a dietary generalist, feeding on frogs, lizards, birds, and small mammals. On the other hand, two other dominant species, *R. tigrinus* and *G. blomhoffii*, 30 years ago are still dominant in the present study. *Rhabdophis tigrinus* depends mostly on frogs as food resources, and *G. blomhoffii* is a generalist, as is *E. quadrivirgata*. The change in the guild structure of frogs might be one of the factors that has affected the guild structure of snakes in the study area. In any event, our study provides a unique case of a decline of a generalist predator in the snake community.

#### ACKNOWLEDGMENTS

We are grateful to Dr. Takashi Kamijo, the laboratory members of Silviculture and Nature Conservation in Tsukuba University, the staff of Mountain Science Center in Tsukuba University, and all volunteers who helped us. This work was supported by the warm cooperation of local people who were engaged in agriculture at the study site. Our research was funded

by JST SPRING (grant number JPMJSP2124) and JSPS KAKENHI (grant number 22J11120). We would like to thank Editage (www.editage.com) for English language editing.

#### LITERATURE CITED

- ANGERMEIER, P. L. 1995. Ecological attributes of extinction prone species: Loss of freshwater species of fishes of Virginia. *Conservation Biology* 9: 143–158.
- ARNOLD, S. J. 1978. Some effects of early experience on feeding responses in the common garter snake, *Thamnophis sirtalis*. *Animal Behaviour* 26: 455–462.
- BAUERLE, B., SPENCER, D. L., AND WHEELER, W. 1975. The use of snakes as a pollution indicator species. *Copeia* 1975: 366–368.
- BEAUPRE, S. J. AND DOUGLAS, L. E. 2009. Snakes as indicators and monitors of ecosystem properties. p. 244–261. In: S. J. Mullin and R. A. Seigel (eds.), *Snakes: Ecology and Conservation*. Cornell University Press, New York.
- BLANCHARD, F. N. AND FINSTER, E. B. 1933. A method of marking living snakes for future recognition, with a discussion of some problems and results. *Ecology* 14: 334–347.
- BÖHM, M., COLLEN, B., BAILLIE, J. E. M., BOWLES, P., CHANSON, J., COX, N., HAMMERSON, G., HOFFMANN, M., LIVINGSTONE, S. R., RAM, M., AND RHODIN, A. G. 2013. The conservation status of the world's reptiles. *Biological Conservation* 157: 372–385.
- BRASHARES, J. S., ABRAHMS, B., FIORELLA, K. J., GOLDEN, C. D., HOJNOWSKI, C. E., MARSH, R. A., MCCAULEY, D. J., NUNEZ, T. A., AND WITHEY, L. 2014. Wildlife decline and social conflict. *Science* 345: 376–378.
- BRODIE, J. F., WILLIAMS, S., AND GARNER, B. 2021. The decline of mammal functional and evolutionary diversity worldwide. *Proceedings of the National Academy of Sciences* 118: e1921849118.
- CAPULA, M., RUGIERO, L., CAPIZZI, D., FRANCO, D., MILANA, G., AND LUISELLI, L. 2016. Long-term, climate-change-related shifts in feeding frequencies of a Mediterranean snake population. *Ecological Research* 31: 49–55.



- CHEN, C., YANG, X., TAN, X., AND WANG, Y. 2020. The role of habitat diversity in generating the small-island effect. *Ecography* 43: 1241–1249.
- CROSHAW, D. A., CASSANI, J. R., BACHER, E., HANCOCK, T. L., AND EVERHAM, E. M., III. 2019. Changes in snake abundance after 21 years in Southwest Florida, USA. *Herpetological Conservation and Biology* 14: 31–40.
- FEYRER, F., NOBRIGA, M. L., AND SOMMER, T. R. 2007. Multidecadal trends for three declining fish species: Habitat patterns and mechanisms in the San Francisco Estuary, California, USA. *Canadian Journal of Fisheries and Aquatic Sciences* 64: 723–734.
- FITCH, H. S. 2006. Ecological succession on a natural area in northeastern Kansas from 1948 to 2006. *Herpetological Conservation and Biology* 1: 1–5.
- FUKADA, H. 1992. *Snake Life History in Kyoto*. Impact Shuppankai Co. Ltd., Tokyo.
- GIBBONS, J. W., SCOTT, D. E., RYAN, T. J., BUHLMANN, K. A., TUBERVILLE, T. D., METTS, B. S., GREENE, J. L., MILLS, T., LEIDEN, Y., POPPY, S., AND WINNE, C. T. 2000. The global decline of reptiles, déjà vu amphibians. *BioScience* 50: 653–666.
- GRAITSON, E., BARBRAUD, C., AND BONNET, X. 2019. Catastrophic impact of wild boars: Insufficient hunting pressure pushes snakes to the brink. *Animal Conservation* 22: 165–176.
- HAMANAKA, K., MORI, A., AND MORIGUCHI, H. 2014. Literature survey on food habit of snakes in Japan: Revisited. *Bulletin of the Herpetological Society of Japan* 2014: 167–181.
- HARSHBARGER, J. C., COFFEY, M. J., AND YOUNG, M. Y. 2000. Intersexes in Mississippi river shovelnose sturgeon sampled below Saint Louis, Missouri, USA. *Marine Environmental Research* 50: 247–250.
- HASEGAWA, M. AND MORIGUCHI, H. 1989. Geographic variation in food habits, body size and life history traits of the snakes on the Izu Islands. p. 414–432. In: M. Matsui, T. Hikida, and R. C. Goris (eds.), *Current Herpetology in East Asia*. Herpetological Society of Japan, Kyoto.
- HIRAI, T. 2004. Dietary shifts of frog eating snakes in response to seasonal changes in prey availability. *Journal of Herpetology* 38: 455–460.
- HUANG, B. H., CHANG, C. W., HUANG, C. W., GAO, J., AND LIAO, P. C. 2018. Composition and functional specialists of the gut microbiota of frogs reflect habitat differences and agricultural activity. *Frontiers in Microbiology* 8: 2670.
- KADOWAKI, S. 1992. Food resource overlap between the two sympatric Japanese snakes (*Elaphe quadrivirgata* and *Rhabdophis tigrinus*) in the paddy fields. *Japanese Journal of Ecology* 42: 1–7.
- KADOWAKI, S. 1996. Ecology of a Japanese snake community: Resource use patterns of the three sympatric snakes, *Rhabdophis tigrinus*, *Elaphe quadrivirgata*, and *Agkistrodon b. blomhoffii*. *Bulletin of Tsukuba University Forests* 12: 77–148.
- LADÉAU, S. L., KILPATRICK, A. M., AND MARRA, P. P. 2007. West Nile virus emergence and large-scale declines of North American bird populations. *Nature* 447: 710–713.
- LI, P., WANG, W., AND LV, X. 2013. Snake conservation and sustainable utilization in China: history, status and future. *Shenyang Shifan Daxue Xuebao (Ziran Kexue Ban)* 31: 129–135.
- LINDSTEDT, D. M. 2005. Renewable resources at stake: Barataria-Terrebonne estuarine system in southeast Louisiana. *Journal of Coastal Research* 44: 162–175.
- LIONETTO, M. G., CARICATO, R., AND GIORDANO, M. E. 2021. Pollution biomarkers in the framework of marine biodiversity conservation: State of art and perspectives. *Water* 13: 1847.
- LOWE, S., BROWNE, M., BOUDJELAS, S., AND DE POORTER, M. 2000. *100 of the World's Worst Invasive Alien Species: A Selection from the Global Invasive Species Database*. Hollands Printing Ltd., Auckland.
- MADSEN, T. AND SHINE, R. 2000. Silver spoons and snake body sizes: Prey availability early in life influences long-term growth rates of free-ranging pythons. *Journal of Animal Ecology* 69: 952–958.
- MADSEN, T., UJVARI, B., SHINE, R., AND OLSSON, M. 2006. Rain, rats and pythons: Climate-driven population dynamics of predators and prey in tropical Australia. *Austral Ecology* 31: 30–37.
- MARSHALL, J., DAVISON, A. J., KOPF, R. K., BOUTIER, M., STEVENSON, P., AND VANDERPLASSCHEN, A. 2018. Biocontrol of invasive carp: Risks abound. *Science* 359: 877–877.

- MORI, A. 2021. Ecological traits of a common Japanese pit viper, the Mamushi (*Gloydius blomhoffii*), in Kyoto, with a brief geographic comparison. *Current Herpetology* 40: 92–102.
- MORI, A. AND NAGATA, E. 2016. Relying on a single anuran species: Feeding ecology of a snake community on Kinkasan Island, Miyagi Prefecture, Japan. *Current Herpetology* 35: 106–114.
- MORIGUCHI, H. AND NAITO, S. 1982. Activities and food habit of *Amphisma vibakari* (Boie) and *Rhabdophis tigrinus* (Boie). *The Snake* 14: 136–142.
- READING, C. J., LUISELLI, L. M., AKANI, G. C., BONNET, X., AMORI, G., BALLOUARD, J. M., FILIPPI, E., NAULLEAU, G., PEARSON, D., AND RUGIERO, L. 2010. Are snake populations in widespread decline? *Biology Letters* 6: 777–780.
- SAHA, A., MCRAE, L., DODD, C. K., JR., GADSDEN, H., HARE, K. M., LUKOSCHEK, V., AND BÖHM, M. 2018. Tracking global population trends: Population time-series data and a living planet index for reptiles. *Journal of Herpetology* 52: 259–268.
- SANTOS, X. AND LLORENTE, G. A. 2009. Decline of a common reptile: Case study of the viperine snake *Natrix maura* in a Mediterranean wetland. *Acta Herpetologica* 4: 161–169.
- SCHEELE, B. C., FOSTER, C. N., HUNTER, D. A., LINDENMAYER, D. B., SCHMIDT, B. R., AND HEARD, G. W. 2019. Living with the enemy: Facilitating amphibian coexistence with disease. *Biological Conservation* 236: 52–59.
- SCOTT, N. J. AND SEIGEL, R. A. 1992. The management of amphibian and reptile populations: Species priorities and methodological and theoretical constraints. p. 343–368. In: D. R. McCullough and R. H. Barrett (eds.), *Wildlife 2001: Populations*. Springer, Dordrecht.
- SEIGEL, R. A. AND MULLIN, S. J. 2009. Snake conservation, present and future. p. 281–290. In: S. J. Mullin and R. A. Seigel (eds.), *Snakes: Ecology and Conservation*. Cornell University Press, New York.
- STORNILO, F., MENICHELLI, S., AND ZUFFI, M. A. 2019. A long-term study of a snake community in north-western Tuscany (central Italy): Population structure and density patterns. *Herpetozoa* 32: 101–107.
- TANAKA, K. AND OTA, H. 2002. Natural history of two colubrid snakes, *Elaphe quadrivirgata* and *Rhabdophis tigrinus*, on Yakushima Island, southwestern Japan. *Amphibia-Reptilia* 23: 323–331.
- TERRAUBE, J., ARROYO, B., MADDERS, M., AND MOUGEOT, F. 2011. Diet specialisation and foraging efficiency under fluctuating vole abundance: A comparison between generalist and specialist avian predators. *Oikos* 120: 234–244.
- TOLLEY, K. A., WEEBER, J., MARITZ, B., VERBURGT, L., BATES, M. F., CONRADIE, W., HOFMEYR, M. D., TURNER, A. A., DE SILVA J. M., AND ALEXANDER, G. J. 2019. No safehaven: Protection levels show imperilled South African reptiles not sufficiently safe-guarded despite low average extinction risk. *Biological Conservation* 233: 61–72.
- WARREN, R., PRICE, J., GRAHAM, E., FORSTENHAUSLER, N., AND VANDERWAL, J. 2018. The projected effect on insects, vertebrates, and plants of limiting global warming to 1.5 C rather than 2 C. *Science* 360: 791–795.
- WHITEHEAD, H., CHRISTAL, J., AND DUFAULT, S. 1997. Past and distant whaling and the rapid decline of sperm whales off the Galápagos Islands. *Conservation Biology* 11: 1387–1396.
- WOLFE, A. K., BATEMAN, P. W., AND FLEMING, P. A. 2018. Does urbanization influence the diet of a large snake? *Current Zoology* 64: 311–318.

---

Accepted: 30 November 2022