



## **A TREMATODE FROM THE ROUND WINDOW OF AN ATLANTIC BOTTLENOSED DOLPHIN'S EAR 1**

Author: DAILEY, MURRAY D.

Source: Journal of Wildlife Diseases, 12(1) : 45-47

Published By: Wildlife Disease Association

URL: <https://doi.org/10.7589/0090-3558-12.1.45>

---

BioOne Complete ([complete.BioOne.org](https://complete.BioOne.org)) is a full-text database of 200 subscribed and open-access titles in the biological, ecological, and environmental sciences published by nonprofit societies, associations, museums, institutions, and presses.

Your use of this PDF, the BioOne Complete website, and all posted and associated content indicates your acceptance of BioOne's Terms of Use, available at [www.bioone.org/terms-of-use](https://www.bioone.org/terms-of-use).

Usage of BioOne Complete content is strictly limited to personal, educational, and non - commercial use. Commercial inquiries or rights and permissions requests should be directed to the individual publisher as copyright holder.

---

BioOne sees sustainable scholarly publishing as an inherently collaborative enterprise connecting authors, nonprofit publishers, academic institutions, research libraries, and research funders in the common goal of maximizing access to critical research.

## A TREMATODE FROM THE ROUND WINDOW OF AN ATLANTIC BOTTLENOSED DOLPHIN'S EAR<sup>1</sup>

MURRAY D. DAILEY, Biology Department, California State University,  
Long Beach, California 90840, USA

SAM H. RIDGWAY, Biomedical Division, Biosystems Research Department,  
Naval Undersea Center, San Diego, California 92132, USA

**Abstract:** A trematode from the family Nasitremitidae Yamaguti 1951 was found adhered to the round window in the inner ear of a Bottlenosed Dolphin (*Tursiops truncatus*). The possibility that parasites could be responsible for changes in acoustic behavior and hearing loss is discussed.

### INTRODUCTION

Interest in parasitic diseases of marine mammals has increased greatly during the last few years. There are a number of reports on helminth parasites causing disease in cetaceans.<sup>2,3,4,5</sup>

Dolphins have been shown to possess a very sensitive sonar or echolocation system. Animals have been able to discriminate with 100% accuracy between two steel balls, 5.40 cm and 6.35 cm in diameter.<sup>7</sup> Evans and Powell<sup>6</sup> have demonstrated that even when the object reflectivity is made equal, *T. truncatus* can successfully discriminate between different targets.<sup>1</sup> The auditory system thus takes on a very important role during feeding and navigation in situations of darkness or low light intensities.

### CASE REPORT

The procedure developed by McCormick *et al.*,<sup>8</sup> necessitated surgical exposure of the round window and middle ear structures in dolphins prior to certain electrophysiological studies. During one of these experiments some material, supposed at the time to be tissue, had to be removed from the round window of the

cochlea to facilitate proper placement of an electrode for recording cochlear potentials. The material was fixed in 10% formalin and processed for histologic study. Duplicate slides were stained with Hematoxylin-eosin and periodic acid-Schiff.

Histologic examination revealed the material to be an adult trematode (Fig. 1). Speciation was difficult with the limited material available, but the occurrence of the parasite in the head, the presence of large cuticular spines, lack of cirrus pouch, ova that are triangular in cross-section (Fig. 2), placement and size of the acetabulum suggested the fluke to be a member of the family Nasitremitidae Yamaguti 1951. A diagrammatic reconstruction of the means by which the trematode attached (Fig. 3) to the round window illustrates how the auditory response could be impaired.

### DISCUSSION

Following removal of the trematode, the dolphin's ear responded well to acoustic stimuli. It is possible that the poor responses prior to removal could have

<sup>1</sup> This work supported in part by Office of Naval Research Contract NR 136-886.

been caused by problems other than the parasite, such as mechanical interference in optimum placement of the electrode or by actual interference with hearing. However, investigators working on the audi-

tory system and acoustic behavior of dolphins and whales should be aware of the possibility that parasites could contribute to loss of hearing and thus affect the accuracy of accumulated data.



FIGURE 1. Section of adult trematode taken from the round window of the cochlea of a dolphin (X35).

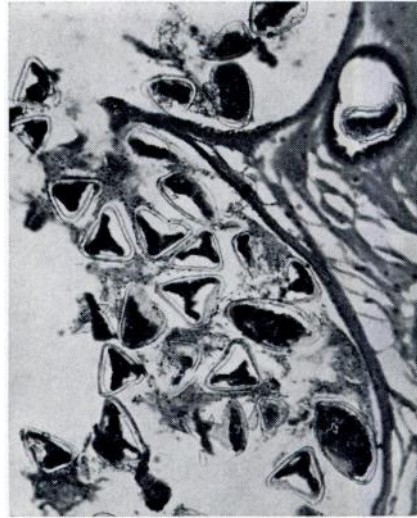


FIGURE 2. Ova in cross section of uterus (X250).

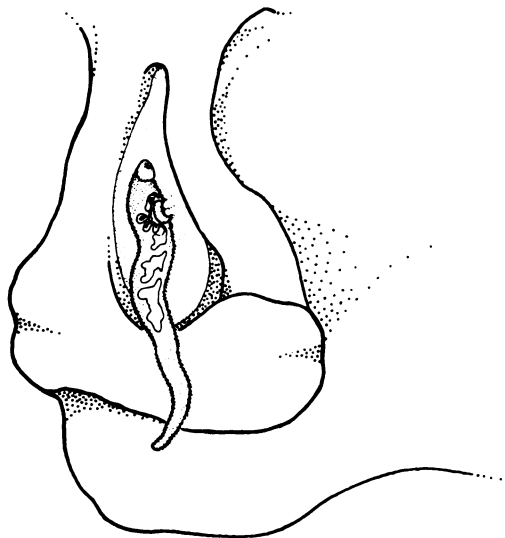


FIGURE 3. Diagrammatic illustration of trematode attached to round window.

**Acknowledgements**

The authors thank Dr. W. G. Wever who removed the trematode from the round window.

**LITERATURE CITED**

1. CALDWELL, D. K. and M. C. CALDWELL. 1972. Senses and Communications. Pages 466-502 in *Mammals of the Sea: Biology and Medicine*. Ed. by S. H. Ridgway. Thomas, Springfield, Ill.
2. DAILEY, M. D. and R. L. BROWNELL, JR. A checklist of marine mammal parasites. In: *Mammals of the Sea: Biology and Medicine*. Ed. by S. H. Ridgway. Thomas, Springfield, Ill.
3. DAILEY, M. D. and W. F. PERRIN. 1973. Helminth parasites of the genus *Stenella* in the Eastern Tropical Pacific with descriptions of two new species: *Mastigonema stenellae* Gen. et sp. n. (Nematoda: Spiruroidea) and *Zalophotrema pacificum* sp. n. (Trematoda: Digenea). *Fishery Bull.* 71: 455-471.
4. DELYAMURE, S. L. 1955. *Helminthofauna of Marine Mammals (Ecology and Phylogeny)*. (Translated from Russian) Israel Program for Scientific Translations, Jerusalem. 522 pp.
5. EVANS, W. E. and B. A. POWELL. 1967. Discrimination of different metallic plates by an echolocating delphinid. In: *Les Systems Sonars Animaux, Biologie et Bionique*. Vol. 1. Laboratoire de Physiologie Acoustique, Jouy-en-Josas, France.
6. McCORMICK, J. G., E. G. WEVER, J. PALIN and S. H. RIDGWAY. 1970. Sound conduction in the dolphin ear. *J. Acoust. Soc. Am.* 48: 1418-1428.
7. NORRIS, K. S., W. E. EVANS and R. N. TURNER. 1967. Echolocation in an Atlantic bottlenose porpoise during discrimination. In: *Les Systems Sonars Animaux, Biologie et Bionique*, Vol. 1. Laboratoire de Physiologie Acoustique, Jouy-en-Josas, France.
8. RIDGWAY, S. H. and M. D. DAILEY. 1972. Cerebral and cerebellar involvement of trematode parasites and their possible role in stranding. *J. Wildl. Dis.* 8: 33-43.

Received for publication 4 April 1975