

Two new species of the genus *Phrathicarus* from New Zealand (Acari: Oribatida: Phthiracaridae)

Authors: Liu, Dong, and Zhang, Zhi-Qiang

Source: Systematic and Applied Acarology, 18(3) : 233-238

Published By: Systematic and Applied Acarology Society

URL: <https://doi.org/10.11158/saa.18.3.5>

The BioOne Digital Library (<https://bioone.org/>) provides worldwide distribution for more than 580 journals and eBooks from BioOne's community of over 150 nonprofit societies, research institutions, and university presses in the biological, ecological, and environmental sciences. The BioOne Digital Library encompasses the flagship aggregation BioOne Complete (<https://bioone.org/subscribe>), the BioOne Complete Archive (<https://bioone.org/archive>), and the BioOne eBooks program offerings ESA eBook Collection (<https://bioone.org/esa-ebooks>) and CSIRO Publishing BioSelect Collection (<https://bioone.org/csiro-ebooks>).

Your use of this PDF, the BioOne Digital Library, and all posted and associated content indicates your acceptance of BioOne's Terms of Use, available at www.bioone.org/terms-of-use.

Usage of BioOne Digital Library content is strictly limited to personal, educational, and non-commercial use. Commercial inquiries or rights and permissions requests should be directed to the individual publisher as copyright holder.

BioOne is an innovative nonprofit that sees sustainable scholarly publishing as an inherently collaborative enterprise connecting authors, nonprofit publishers, academic institutions, research libraries, and research funders in the common goal of maximizing access to critical research.

Two new species of the genus *Phrathicarus* from New Zealand (Acari: Oribatida: Phthiracaridae)

DONG LIU¹ & ZHI-QIANG ZHANG^{2, 3}

¹ Northeast Institute of Geography and Agroecology, Chinese Academy of Sciences, Changchun 130102, P. R. China.
E-mail: liudong@neigae.ac.cn

² Landcare Research, 231 Morrin Road, Auckland, New Zealand

³ Corresponding author. E-mail: zhangz@landcareresearch.co.nz

Abstract

The genus *Phrathicarus* (Acari: Oribatida: Phthiracaridae) was represented by only one species prior to this work. In this paper, two new species of *Phrathicarus* are described from New Zealand: *Phrathicarus longisensillus* **sp. nov.** from the Red Island, Mercury Islands, and *Phrathicarus hikurangi* **sp. nov.** from Mt. Hikurangi, Northland. A key to all known species of *Phrathicarus* is provided.

Key words: Soil mites, Oribatida, Phthiracaridae, *Phrathicarus*, new species, key to species, New Zealand

Introduction

The genus *Phrathicarus* (Oribatida: Phthiracaridae) was established by Niedbala in 1994 with a new species from New Zealand, *Phrathicarus inflatus*, as its type species. Since then, this genus has remained monotypic (Subías 2013). This genus is characterized by the following features: body surface punctate; dorsal and lateral fields of prodorsum not fused; lateral carinae and posterior furrows of prodorsum absent; interlamellar setae erect; neotrichy of notogastral setae present; nine pairs of genital setae present, setae g_7 – g_9 (or only g_7 and g_9) displaced towards the paraxial margin, in a row with g_1 – g_5 , and setae g_6 (or also g_8) far away from the margin; four setae (ad_1 , an_1 , an_2 and ad_2) form a row near the paraxial margin of ano-adanal plate; setae d on femora I located at the distal end of segment; setae v' on femora I and setae l' on genua IV present; setae d on tibiae IV short, coupled with solenidia; setae ft'' on tarsi I normal (Niedbala 1994).

During the first author's visit to Landcare Research in Auckland in April 2012, we identified two new species of this genus from New Zealand Arthropod Collection. The purpose of this paper is to give detailed descriptions of the two new species and a key to all known species of *Phrathicarus*.

Material and methods

Measurements and descriptions are based on specimens mounted in temporary cavity slides that were studied using a light microscope equipped with a drawing attachment.

Terminology generally follows Niedbala (1992, 2000). The unit of measurement is micrometre (μm).

All holotype specimens are deposited in the New Zealand Arthropod Collection, Landcare Research, Auckland (NZAC). Paratype specimens are split between NZAC and Northeast Institute of Geography and Agroecology, Chinese Academy of Sciences, Changchun (NIGA).

Descriptions of new species

Phrathicarus longisensillus sp. nov.

(Figs. 1–9)

Material examined: Holotype: adult (NZAC, in alcohol, 72/227), New Zealand: Red I. Mercury Is. Cl., from mainly Myrsine litter, 24 Nov., 1972, leg. G. W. Ramsay. Paratype: one adult (NIGA, in alcohol, 72/227), same data as holotype.

Etymology. Named for its long sensilli on the prodorsum and used here as a noun in apposition.

Description. *Measurements.* Holotype: Prodorsum: length 450, width 350, height 130, setae: *ss* 195, *ro* 82, *le* 33, *in* 300, *ex* 75; notogaster: length 1050, width 680, height 660; setae: *c*₁ 360, *d*₁ 80, *e*₁ 200, *h*₁ 350, *ps*₁ 360; ventral region: *g*₉ 50, *ad*₁ 214, *ad*₃ 100; genitoaggenital plate 225×297, anoanal plate 200×400. Paratype: Prodorsum: length 445, width 350, height 130; notogaster: length 1020, width 670, height 653.

Integument. Colour yellowish. Surface of body finely punctate.

Prodorsum (Figs. 1–2). Median crista absent; sigillar fields distinct, dorsal field widened towards rostral setae, longer than lateral fields; sensilli (*ss*) long, narrow, rough, gradually tapering; interlamellar setae (*in*) long, stout and rough; lamellar (*le*) and rostral setae (*ro*) short, much thinner than interlamellar setae; exobothridial setae (*ex*) short and fine; comparative length: *in*>*ss*>*ro*>*ex*>*le*, *in/le*=9.1; mutual distance of setae: *in*–*in*/*ro*–*ro*=1.74.

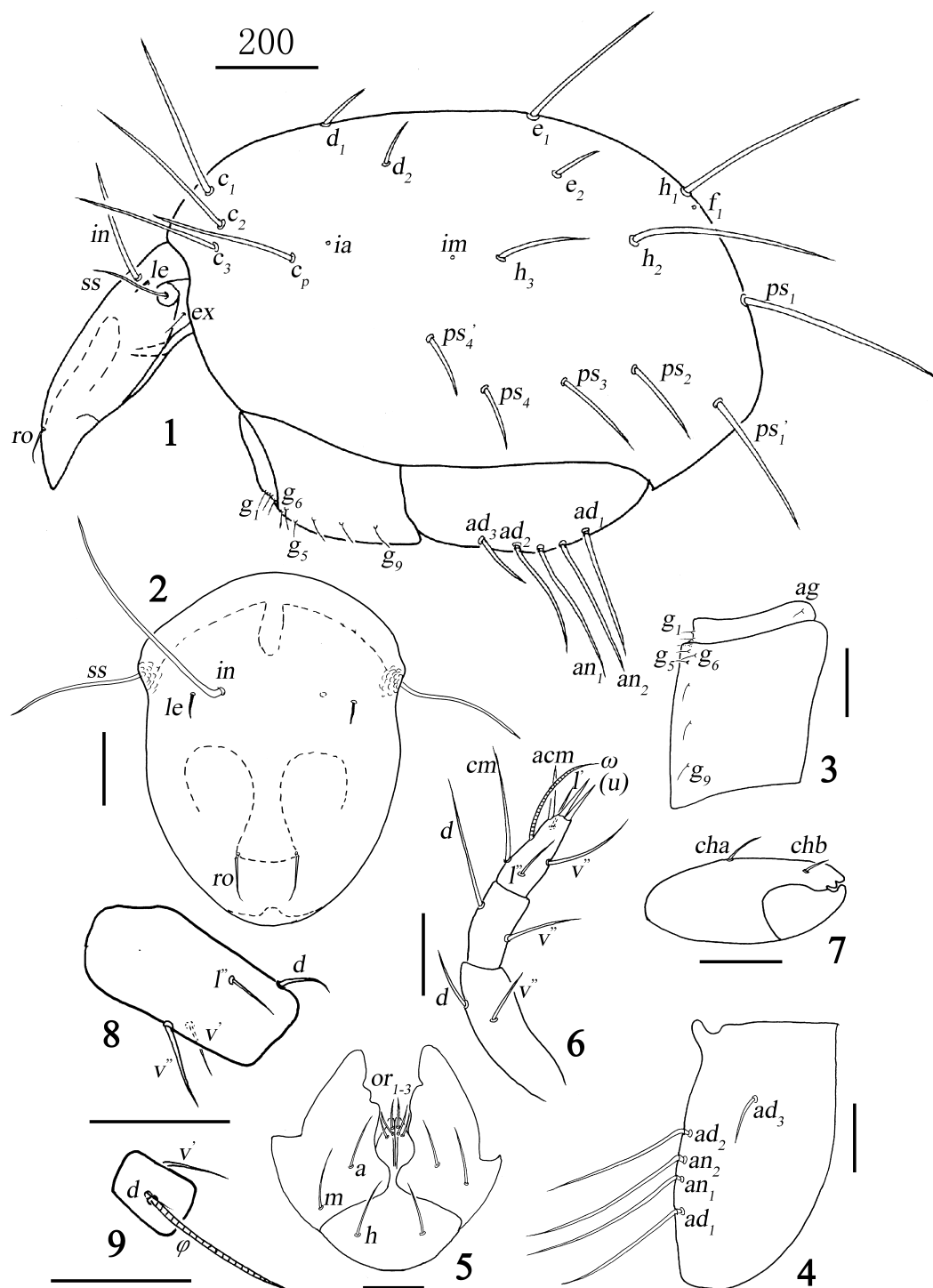
Notogaster (Fig. 1). 17 pairs of setae in different length (*c*₁>*c*₁–*d*₁=1.25), robust and rough; setae *h*₃, *ps*_{2–4} and *ps*₄' medium long; setae *d*_{1–2} and *e*₂ much shorter than other setae; setae *c*_{1–3} far away from anterior border, setae *c*₁ and *c*₂ more so than *c*₃; additional setae present in *ps* or (and) *h* series; two pairs of lyrifissures *ia* and *im* present.

Gnathosoma (Figs. 5–7). Subcapitulum normal (Fig. 5); setae *h*, *m*, and *a* simple and smooth; setae *h* equal to distance between them; adoral seta *or*₁ apparently flat with barbs; *or*_{2–3} simple and smooth; palp (Fig. 6) 4-segmented, with femur and genu fused; palpal setation: 0-2-2-7(1); supracoxal seta simple and smooth; chelicera (Fig. 7) with two smooth setae (*cha*, *chb*).

Ano-genital region (Figs. 1, 3–4). Nine pairs of genital setae (*g*) present with formula: 6(4+2): 3; anoanal plates each with five pairs of stout and rough setae (*an* and *ad*), setae *ad*₃ shortest.

Legs (Figs. 8–9). Setal counts for leg segments (without tarsi): I: 1-4-2(2)-4(1); II: 1-3-2(1)-3(1), III: 2-2-1(1)-2(1), IV: 2-1-1-2(1); setae *ft*'' on tarsi II straight distally; setae *s* and *pv*' on tarsi IV present; setae *s* on tarsi I and II present.

Remark. Comparing with the species *P. inflatus* Niedbala, 1994, the new species can be easily distinguished by the following five characters (a versus b): in *P. longisensillus* sp. nov., (1a) dorsal sigillar field longer than lateral fields; (2a) interlamellar, rostral and notogastral setae not flagellate distally; (3a) comparative length of prodorsal setae: *in*>*ss*>*ro*>*ex*>*le*; (4a) 17 pairs of notogastral setae present, additional setae present only in *ps* series; (5a) two pairs of lyrifissures *ia* and *im* present; in *P. inflatus*, (1b) dorsal sigillar field short, not longer than lateral fields; (2b) interlamellar, rostral and some notogastral setae flagellate distally; (3b) comparative length of prodorsal setae: *in*>*ro*>*ss*>*le*>*ex*; (4b) 19 pairs of notogastral setae present, additional setae present in *c* and *ps* series; (5b) only one pair of lyrifissures *im* present.



FIGURES 1–9. *Phrathicarus longisensillus* sp. nov.: 1, lateral view of body (legs removed); 2, prodorsum, dorsal view; 3, left side of genitoaggenital plate; 4, left side of anoadanal plate; 5, subcapitulum, palpi removed; 6, palp, antiaxial view; 7, chelicera, antiaxial view; 8, femur I; 9, tibia IV. Scale bars: 1=200 μ m; 2–4, 7–9=100 μ m; 5–6=50 μ m.

***Phrathicarus hikurangi* sp. nov.**

(Figs. 10–18)

Material examined: Holotype: adult (NZAC, in alcohol, 79/1), New Zealand: GB, Mt. Hikurangi, 1372m, from litter in subalpine bush dominated by *Nothofagus menziesii* and *Olearia colensoi*, 14 Jan., 1979, leg. A. K. Walker and R. A. Galbreath. Paratypes: three adults (NZAC, in alcohol, 79/1), same data as holotype; one adult (NIGA, in alcohol, 79/1), same data as holotype.

Etymology. Named after type locality and used here as a noun in apposition; Mt. Hikurangi (1754 metres) is the highest peak in the rugged Raukumara Range in the North Island and is recognised as the first point on the New Zealand mainland to greet the morning sun.

Description. Measurements. Holotype: Prodorsum: length 530, width 365, height 230, setae: *ss* 200, *ro* 175, *le* 450, *in* 555, *ex* 45; notogaster: length 1030, width 740, height 780; setae: *c*₁ 650, *d*₁ 95, *e*₁ 370, *h*₁ 770, *ps*₁ 600; ventral region: *g*₉ 70, *g*₈ 50, *g*₁ 25; genitoaggenital plate 270×230, anoadanal plate 215×400. Paratypes: Prodorsum: length 501–600, width 360–410, height 208–220; notogaster: length 1020–1200, width 720–880, height 750–900.

Integument. Colour brown. Surface of body finely punctate.

Prodorsum (Figs. 10–12). Median crista absent; sigillar fields distinct, dorsal field widened towards rostral setae, longer than lateral fields; sensilli long, narrow, rough, gradually tapering; interlamellar and lamellar setae long, stout, erect and rough, flagellate distally; rostral setae stout and rough, exceeding the end of rostrum; exobothridial setae short and fine; comparative length: $in > le > ss > ro > ex$, $in/le = 1.2$; mutual distance of setae: $in-in/ro-ro \approx 1.65$.

Notogaster (Fig. 10–11). 26 pairs of setae in different length present; setae *d*_{1–2} and *h*₃ robust, rough, very short; setae *e*₁ and *e*₂ medium long; other setae long ($c_1 > c_1-d_1$), robust, rough and flagellate distally; setae *c*_{1–3} situated nearly in same level, setae *c*_p close to *c*₃; additional setae present in *c*, *e* and *ps* series; vestigial setae *f*₁ not observed; two pairs of lyrifissures *ia* and *im* present.

Gnathosoma (Figs. 14–16). Subcapitulum normal (Fig. 14); setae *h*, *m*, and *a* simple and smooth; setae *h* longer than distance between them; adoral seta *or*₁ apparently flat with barbs; *or*_{2–3} simple and smooth; palp (Fig. 15) 4-segmented, with femur and genu fused; palpal setation: 0-2-2-7(1); supracoxal seta simple and smooth; chelicera (Fig. 16) with two smooth setae (*cha*, *chb*).

Ano-genital region (Figs. 10, 13). Nine pairs of genital setae present with formula: 6(4+2): 3, setae *g*_{6–9} longer than other genital setae; anoadanal plates each with five to seven pairs of stout and rough setae (e.g. holotype: left side of anoadanal plates with six setae, right side of anoadanal plates with seven setae; one of paratypes: left side of anoadanal plates with six setae, right side of anoadanal plates with five setae); setae *ad*₃, *ad*₃' and *ad*₃'' shortest.

Legs (Figs. 17–18). Setal counts for leg segments (without tarsi): I: 1-4-2(2)-4(1); II: 1-3-2(1)-3(1), III: 2-2-1(1)-2(1), IV: 2-1-1-2(1); setae *ft*'' on tarsi II straight distally; setae *s* and *pv*' on tarsi IV present; setae *s* on tarsi I and II present.

Remark. This new species is unique in having 26 pairs of notogastral setae, because none of species of this group has been reported in having more than 19 pairs of notogastral setae. In addition, this new species can be easily distinguished from other species of this genus by the combination of following characters: (1) dorsal sigillar fields longer than lateral regions; (2) interlamellar, lamellar and some notogastral setae long and flagellate distally, rostral setae without flagellate distal ends; (3) $in > le > ss > ro > ex$, $in/le = 1.2$; (4) two pairs of lyrifissures *ia* and *im* present; (5) 1–2 additional setae present on each anoadanal plate in some specimens.

Key to species of *Phrathicarus*

- 1 26 pairs of notogastral setae present. *P. hikurangi* **sp. nov.**
- Less than 20 pairs of notogastral setae present 2
- 2 17 pairs of notogastral setae present; comparative length of prodorsal setae: $in>ss>ro>ex>le$
. *P. longisensillus* **sp. nov.**
- 19 pairs of notogastral setae present; comparative length of prodorsal setae: $in>ro>ss>le>ex$
. *P. inflatus* Niedbala, 1994

Acknowledgements

We are very grateful to Prof. Jun Chen, Institute of Zoology, Chinese Academy of Sciences for supplying references to the first author. We thank all the people who collected specimens for us. Sincere thanks are also due to Prof Wojciech Niedbala, Adam Mickiewicz University, Poland, for the critical reading of the manuscript and valuable suggestions. The first author's work was supported by the Funds for The Excellent Youth Scholars of "NEIGAE, CAS" (DLSYQ2012004), the Knowledge Innovation Programs of the Chinese Academy of Sciences (KSCX2-EW-Z-8), the Major Program of National Natural Science Foundation of China—Fauna Sinica (31093430), the key research program of the Chinese Academy of Sciences (Grant No. KZZD-EW-TZ-16), and the National Natural Science-Foundation of China (Grant No. 31101617). The second author's research on defining New Zealand mites was supported by Core funding for Crown Research Institutes from the Ministry of Business, Innovation and Employment's Science and Innovation Group.

References

- Niedbala, W. (1992) *Phthiracaroida (Acari, Oribatida). Systematic Studies*. PWN-Polish Scientific Publishers, Warszawa, 612 pp.
- Niedbala, W. (1994) Supplement to the classification of Phthiracaroida, with redescrptions and descriptions of some species (Acari, Oribatida, Euptyctima). *Genus*, 5 (1–2), 1–152.
- Niedbala, W. (2000) The ptyctimous mites fauna of the Oriental and Australian Regions and their centres of origin (Acari: Oribatida). *Genus*, supplement, 1–493.
- Subías, L.S. (2013) Listado sistemático, sinonímico y biogeográfico de los ácaros oribátidos (Acariformes: Oribatida) del mundo (Excepto fósiles). *Graellsia*, 60 (número extraordinario): 3–305 (2004) (Actualizado en junio de 2006, en abril de 2007, en mayo de 2008, en abril de 2009, en julio de 2010, en febrero de 2011 y en abril de 2012). Available from: <http://www.ucm.es/info/zoo/Artropodos/Catalogo.pdf> (accessed 1 Sept. 2013).

Accepted by Qing-Hai Fan: 19 Sept. 2013; published: 15 Oct. 2013