



## **Synonymy of *Phanerota appendiculata* and *P. insigniventris* (Coleoptera: Staphylinidae: Aleocharinae), and First Record of *P. appendiculata* in Korea**

Authors: Kim, Yoon-Ho, and Ahn, Kee-Jeong

Source: Florida Entomologist, 91(4) : 690-692

Published By: Florida Entomological Society

URL: <https://doi.org/10.1653/0015-4040-91.4.690>

---

The BioOne Digital Library (<https://bioone.org/>) provides worldwide distribution for more than 580 journals and eBooks from BioOne's community of over 150 nonprofit societies, research institutions, and university presses in the biological, ecological, and environmental sciences. The BioOne Digital Library encompasses the flagship aggregation BioOne Complete (<https://bioone.org/subscribe>), the BioOne Complete Archive (<https://bioone.org/archive>), and the BioOne eBooks program offerings ESA eBook Collection (<https://bioone.org/esa-ebooks>) and CSIRO Publishing BioSelect Collection (<https://bioone.org/csiro-ebooks>).

Your use of this PDF, the BioOne Digital Library, and all posted and associated content indicates your acceptance of BioOne's Terms of Use, available at [www.bioone.org/terms-of-use](http://www.bioone.org/terms-of-use).

Usage of BioOne Digital Library content is strictly limited to personal, educational, and non-commercial use. Commercial inquiries or rights and permissions requests should be directed to the individual publisher as copyright holder.

---

BioOne is an innovative nonprofit that sees sustainable scholarly publishing as an inherently collaborative enterprise connecting authors, nonprofit publishers, academic institutions, research libraries, and research funders in the common goal of maximizing access to critical research.

# SYNONYMY OF *PHANEROTA APPENDICULATA* AND *P. INSIGNIVENTRIS* (COLEOPTERA: STAPHYLINIDAE: ALEOCHARINAE), AND FIRST RECORD OF *P. APPENDICULATA* IN KOREA

YOON-HO KIM AND KEE-JEONG AHN

Department of Biology, Chungnam National University, Daejeon 305-764, Republic of Korea

*Phanerota appendiculata* (Motschulsky) was first described as *Gyrophæna appendiculata* (Motschulsky, 1858). Later, Cameron (1934) proposed the new subgenus *Acanthophaena* under *Gyrophæna* Mannerheim, based on male characters of abdominal sternite V with lateral margins expanded as a lamelliform process, and with a short mesosternal process. In 1939, Cameron re-described *G. (A.) appendiculata* with 2 new species, including *G. insigniventris*. However, Seevers (1951) recognized that the placement of *Acanthophaena* under *Gyrophæna* was not correct. Finally, Ashe (1984) presented evidence that *Acanthophaena* should be treated as a subgenus of *Phanerota* Casey.

While studying Korean *Gyrophæna*, we found a species with a very unusual body form. After detailed comparisons with many syntypes of *Gyrophæna*, the species was identified as *Phanerota appendiculata*. In addition, syntypes of *P. insigniventris* were very similar to *P. appendiculata*. Diagnostic characteristics (structures of antennae, tergite VIII, median lobe, and paramere) of *P. insigniventris* were not sufficient to maintain the separation of *P. insigniventris* and *P. appendiculata*. Therefore, after studying 3 specimens of *P. insigniventris* and 59 specimens of *P. appendiculata*, we synonymize *P. insigniventris* under *P. appendiculata* and report *P. appendiculata* for the first time in Korea.

## *PHANEROTA APPENDICULATA* (MOTSCHULSKY)

*Gyrophæna appendiculata* Motschulsky, 1858: 228; Cameron, 1934: 23; 1939: 60.

*Phanerota appendiculata*: Ashe, 1984: 238.

*Gyrophæna insigniventris* Cameron, 1939: 60. **New synonym**

**Description.** Body length 3.2-3.8 mm. Body (Fig. 1) flattened dorsoventrally. Color usually brown, head and tergites V-VI dark brown. Body surface glossy and slightly pubescent. Head about  $1.7 \times$  wider than long. Surface glossy with some macrosetae. Eyes extremely large, occupying most of lateral margin of head, eyes coarsely faceted. Infraorbital carina well developed. Antenna (Fig. 2A) pubescent. Antennomere 4 about  $1.8 \times$  longer than wide, 5-7 about  $1.1 \times$  longer than wide, 8-10 as long as wide. Labrum transverse,

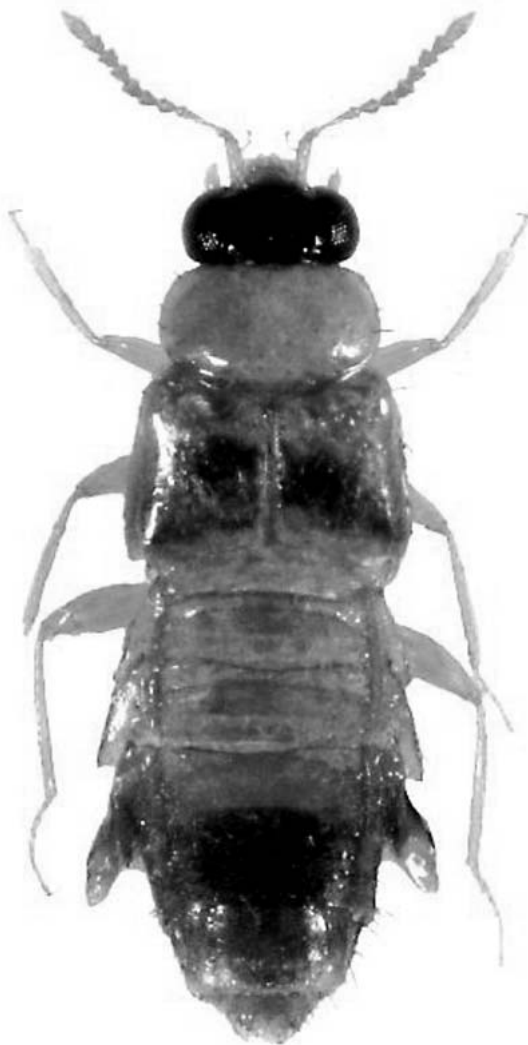


Fig. 1. Habitus. *Phanerota appendiculata*, male, 3.8 mm.

major setae distinct. Tip of lacinia with well developed spore brush. Mandible not bifid, strongly curved ventrally, patch of denticles present on ventral molar region. Labium with ligula entire, protruded, more or less pointed. Labial palpi with 2 articles. Pronotum slightly transverse, broadly oval, about  $1.5 \times$  wider than long. Surface with fine punctures, macrosetae scattered at side. Hy-

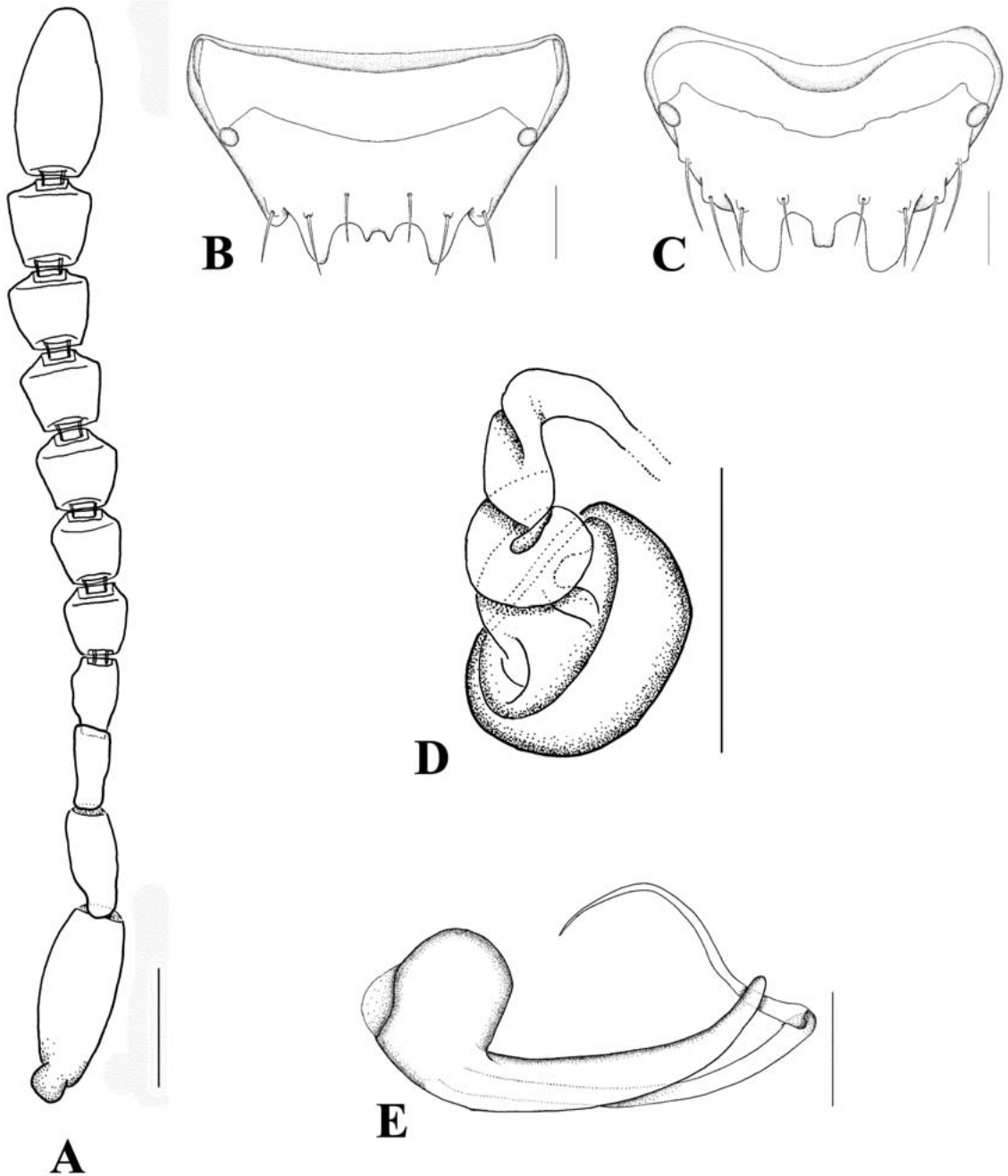


Fig. 2. *Phanerota appendiculata*, A: antenna, ventral aspect; B: female tergite VIII, ventral aspect; C: male tergite VIII, ventral aspect; D: spermatheca, lateral aspect; E: median lobe, lateral aspect. Scale bars = 0.1 mm.

pomera visible in lateral aspect. Elytra about  $1.6 \times$  longer than wide, outer apical angles slightly sinuated. Surface glossy and macrosetae scattered at side. Mesosternal process with medial longitudinal carina extended to middle of mesocoxal cavity. Coxae widely separated. Tarsal formula 4-4-5. Abdominal tergites II-VII with mac-

rosetae scattered at side. Male tergites III-V transversely impressed, tergite VII with 6 tubercles on hind margin. Male tergite VIII (Fig. 2C) with 3 processes, median one small, lateral ones large. Female tergite VIII (Fig. 2B) with 4 processes, inner ones small and acute at apex. Male with abdominal sternite V with each lateral mar-

gin expanded lamelliform process. Median lobe (Fig. 2E) long, slender and spine-like; flagellum long, slender and more or less whip-like in lateral aspect. Spermatheca (Fig. 2D) with neck elongate and coiled proximal to plate-like flange.

**Materials Examined.** Syntype, 3, labeled as follows: Nilambur, Madras, S. N. Chatterjee, *Gyrophaena insigniventris* Cam. Type, M. Cameron, Bequest. B. M. 1955-147. Singapore, 1♂, Bukit Panjang, Singapore, Dr. Cameron, *Gyrophaena appendiculata* Motschulsky, M. Cameron, Bequest. B. M. 1955-147; 2♀, Chungnam National Univ., Gung-dong, Yuseong-gu, Daejeon-city, Chungnam Province, Korea, 13.vii.2006, SJ Park, HW Kim, YH Kim, *ex* mushroom; 12♂♀, Gapsa, Gyeryongsan, Gongju-city, Chungnam Province, Korea, 2.vii.2000, MH Kim, *ex* mushroom; 14♂♀, same data as former except for 12.vii.2000 (2♂, on slide); 9♂♀, same data as former except for 30.vii.2002; 2♂, same data as former except for Sangsin-ri, Banpo-myeon, 26.viii.2001; 3♂♀, Gwangdeoksan, Gwangdeok-ri, Gwangdeok-myeon, Cheonan-city, Chungnam Province, Korea, 22.vii.2000, MH Kim, *ex* mushroom; 1♂, Secheon park, Sikjangan, Seocheon-dong, Jung-gu, Daejeon-city, Chungnam Province, Korea, 5.viii.2000, MH Kim, *ex* mushroom; [GG] 10♂♀, Girisan, Hyeondeok-myeon, Pyeongtaek-city, Gyeonggi Province, Korea, 28.vi.2006, SJ Park, HW Kim, YH Kim, *ex* mushroom (3♂1♀, on slide).

**Distribution.** Korea, China, Japan, and India.

We thank Dr. R. Booth (The Natural History Museum, London, England) for the loan of type specimens. This research is supported by the Ministry of Environment of the Korean Government (Grant No. 2007-491-1) to K.-J. Ahn.

#### SUMMARY

A taxonomic study of *Phanerota appendiculata* (Motschulsky) in Korea is presented. The genus and species are recognized for the first time in Korea. *Phanerota insigniventris* (Cameron) is synonymized under *P. appendiculata*. A habitus illustration and line drawings of diagnostic characters are provided.

#### REFERENCES CITED

- ASHE, J. S. 1984. Generic revision of the subtribe Gyrophaenina (Coleoptera: Staphylinidae: Aleocharinae) with a review of the described subgenera and major features of evolution. *Quaest. Entomol.* 20: 129-349.
- CAMERON, M. 1934. The staphylinid Coleoptera of the New Hebrides. *Stylops* 3: 20-34.
- CAMERON, M. 1939. Fauna of British India including Ceylon and Burma. Coleoptera. Staphylinidae. Vol. IV. Parts I & II. Taylor & Francis, London: 59-61.
- MOTSCHULSKY, V. 1858. Énumération des nouvelles espèces de coléoptères rapportés de ses voyages. *Bull. Soc. Imp. des Nat. Moscou* 31(3): 204-264.
- SEEVERS, C. H. 1951. A revision of the North American and European staphylinid beetles of the subtribe Gyrophaenae (Aleocharinae: Bolitocharini). *Fieldiana Zool.* 23: 659-762.