



## **An Improved Method for Extraction and Purification of Termite Endo- $\beta$ -1,4-Glucanase from FTA® Cards**

Authors: Bujang, Nurmastini Sufina, Harrison, Nigel A., and Su, Nan-Yao

Source: Florida Entomologist, 94(2) : 356-358

Published By: Florida Entomological Society

URL: <https://doi.org/10.1653/024.094.0236>

---

The BioOne Digital Library (<https://bioone.org/>) provides worldwide distribution for more than 580 journals and eBooks from BioOne's community of over 150 nonprofit societies, research institutions, and university presses in the biological, ecological, and environmental sciences. The BioOne Digital Library encompasses the flagship aggregation BioOne Complete (<https://bioone.org/subscribe>), the BioOne Complete Archive (<https://bioone.org/archive>), and the BioOne eBooks program offerings ESA eBook Collection (<https://bioone.org/esa-ebooks>) and CSIRO Publishing BioSelect Collection (<https://bioone.org/csiro-ebooks>).

Your use of this PDF, the BioOne Digital Library, and all posted and associated content indicates your acceptance of BioOne's Terms of Use, available at [www.bioone.org/terms-of-use](http://www.bioone.org/terms-of-use).

Usage of BioOne Digital Library content is strictly limited to personal, educational, and non-commercial use. Commercial inquiries or rights and permissions requests should be directed to the individual publisher as copyright holder.

---

BioOne is an innovative nonprofit that sees sustainable scholarly publishing as an inherently collaborative enterprise connecting authors, nonprofit publishers, academic institutions, research libraries, and research funders in the common goal of maximizing access to critical research.

## AN IMPROVED METHOD FOR EXTRACTION AND PURIFICATION OF TERMITE ENDO- $\beta$ -1,4-GLUCANASE FROM FTA® CARDS

NURMASTINI SUFINA BUJANG<sup>1,\*</sup>, NIGEL A. HARRISON<sup>2</sup> AND NAN-YAO SU<sup>1</sup>

<sup>1</sup>Department of Entomology and Nematology, Fort Lauderdale Research and Education Center, University of Florida, Institute of Food and Agricultural Sciences, 3205 College Avenue, Fort Lauderdale, FL 33314-7719, USA

<sup>2</sup>Department of Plant Pathology, Fort Lauderdale Research and Education Center, University of Florida, Institute of Food and Agricultural Sciences, 3205 College Avenue, Fort Lauderdale, FL 33314-7719, USA

Supplemental material online at <http://www.fcla.edu/FlaEnt/fe942.htm#InfoLink2>

FTA® technology is an approach designed to expedite and simplify the collection, preservation, storage, shipment, and recovery of nucleic acid from the storage matrix (Whatman Inc. 2002a). FTA® cards have been used and evaluated for DNA archiving of various biological sources (Moscoso et al. 2004; Harvey 2005). However, this method is expensive (\$1.14/sample) and preparations can be elaborate, thus pushing researchers to devise alternative and cheaper methods for DNA preservation and storage (Owens & Szalanski 2005). Furthermore, in some cases, DNA retrieval from the FTA® cards is complex and requires highly selective conditions (Hide et al. 2003; Adams et al. 2008). Hence, some researchers have had to modify the protocols to retrieve DNA from the FTA® cards in their studies (Silva et al. 2004; Smith & Burgoyne 2004).

For termites, we have failed to obtain successful amplifications from the nucleic acid processed using any of the manufacturer-recommended procedures. Thus, we have developed a new combination of methods for DNA recovery from FTA® cards.

In our study, the gene of interest was a cellulase of termite origin in the glycoside hydrolase 9 superfamily. These endo- $\beta$ -1,4-glucanases are produced by the termite itself to digest cellulose. Seven species of termites from the family Termitidae were analyzed. *Nasutitermes corniger* (Motschulsky) was obtained from a laboratory culture collected from Dania Beach, Florida, USA. *Nasutitermes* sp., *Macrotermes gilvus* (Hagen), *M. carbonarius* (Hagen), *Microcerotermes crassus* Snyder, *Microtermes pakistanicus* Ashmead and *Odontotermes* sp. were all fresh specimens collected at Universiti Sains Malaysia, Pulau Pinang, Malaysia.

After collection, termite workers were rinsed with 85% EtOH to remove any surface debris and then allowed to air-dry for several minutes. Nucleic acid from the head capsules of 10 termite workers was released and preserved on the FTA® Plantsaver Card (Whatman Inc., Newton, MA) according to the manufacturer's protocol. Only

termite heads were used to avoid sample contamination by DNA of resident gut microorganisms.

Using a sterile blade and forceps to prevent contamination, we excised a 1-cm<sup>2</sup> piece containing dried nucleic acid extract from the FTA® card sample area and placed it in a 1.5-mL microcentrifuge tube containing 300  $\mu$ L TE (10 mM Tris-HCl, 1 mM EDTA, pH 8) as elution buffer. The tube was then vortexed for 20 s before storage in a refrigerator at 4°C for 1 h. Each hydrated strip of FTA® card was squeezed with sterile forceps to release as much nucleic acid as possible into the elution buffer before the strip was discarded. The eluate was then purified with the Wizard® DNA Clean-Up System (Promega Corp., Madison, WI) following the manufacturer's procedure. As a negative control, a similar strip of FTA® card containing no sample was processed in the same manner to ascertain that the FTA® card alone did not yield positive results.

PCR was performed with specifically-designed endo- $\beta$ -1,4-glucanase primers NTf3 (Tokuda et al. 1999) and NT7 (Tokuda et al. 2004). Amplifications were conducted in 50  $\mu$ L final reaction volumes, each containing standard PCR Buffer with 1.5 mM MgCl<sub>2</sub> (Innis & Gelfand 1990), 2  $\mu$ L DNA template, 50 ng of each primer, 125  $\mu$ M of each dNTP and 1 U EconoTaq DNA polymerase (Lucigen Corp., Middleton, WI). Apart from the standard positive control DNA (NC-Q) extracted with DNeasy® Blood & Tissue Kit, an additional positive control (1  $\mu$ L NC-Q + 1  $\mu$ L FTA® negative control) was performed to dismiss the possibility of inhibition solely by FTA® cards. The primers used for PCR are available as supplemental information. The temperature profile for the first cycle was 94°C for 2 min, 52°C for 2 min, and 72°C for 3 min. For the remaining 44 cycles, the temperature profile was 94°C for 1 min, 52°C for 2 min, and 72°C for 3 min.

The endo- $\beta$ -1,4-glucanase from 7 species of higher termites was successfully amplified from the DNA retrieved from the FTA® card, as determined by electrophoresis of PCR products through 1% agarose gels and visualization of products by

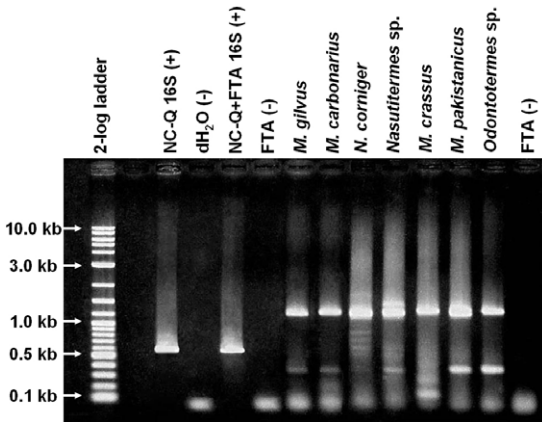


Fig. 1. Visualization of endo- $\beta$ -1,4-glucanase amplification from 7 termitid species with 1% agarose gel electrophoresis of DNA retrieved by our recovery method.

UV transillumination after staining with ethidium bromide (Fig. 1). Aliquots (1  $\mu$ L) of purified PCR products were quantified by comparison with serial dilutions of uncut lambda DNA (Promega) in 1% agarose gels (Fig. 2) and sequenced.

Our DNA retrieval method offers a few advantages over the processing method recommended by the manufacturer. For example, the latter's standard process necessitates the use of FTA® Purification Reagent (Whatman Inc., Newton, MA; \$232.18), TE buffer (10 mM Tris-HCl, 0.1 mM EDTA, pH 8) and Harris Micro Punches (\$312.88) (or Harris Uni-Core Punches; \$95.84). Our processing requires none of these, only the Wizard® DNA Clean-Up System (\$1.38/prep) instead. The genomic DNA elution by a room temperature pH method (Whatman Inc. 2002b) is similar in concept to

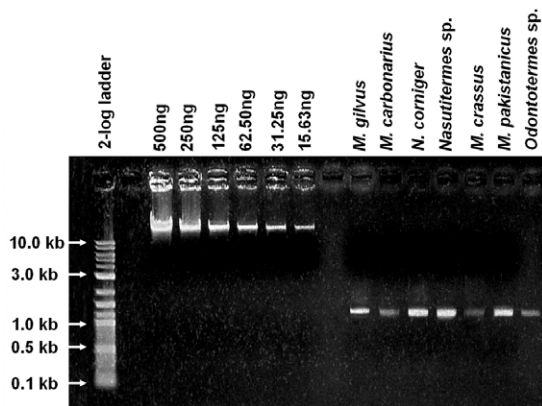


Fig. 2. Yield comparison of aliquots (1  $\mu$ L) of endo- $\beta$ -1,4-glucanase sequences amplified by PCR from DNAs of 7 termitid species retrieved from FTA® cards by our recovery protocol.

our method, but requires previous washing with the FTA® Purification Reagent, and the added use of 2 different solutions; namely 0.1 N NaOH, 0.3 mM EDTA (pH 13), and 0.1 M Tris-HCl (pH 7). In addition, sample disc size is a critical factor because insufficient DNA affects amplification while excessive DNA may cause inhibition. However, despite these considerations, neither the 1.2-mm, 2.0-mm nor the 3.0-mm diameter discs with the manufacturer's method has ever produced successful amplification of endo- $\beta$ -1,4-glucanase in our experience.

## SUMMARY

In conclusion, we report an improved method for extraction and purification of termite nucleic acid from the FTA® Plantsaver Card (Whatman), which involves elution with TE buffer (pH 8) and purification with Wizard® DNA Clean-Up System (Promega). Our DNA recovery protocol requires less material, equipment, preparation, and manipulation, and reduces processing time, costs and chances for contamination compared with the manufacturer-recommended FTA® purification protocol. Most important, in relation to our study, it has been consistently effective in obtaining termite nucleic acid permitting further DNA analysis when all other methods have failed.

## REFERENCES CITED

- ADAMS, E. R., HAMILTON, P. B., MALELE, I. I., AND GIBSON, W. C. 2008. The identification, diversity and prevalence of trypanosomes in field caught tsetse in Tanzania using ITS-1 primers and fluorescent fragment length barcoding. *Infect. Genet. Evol.* 8: 439-444.
- HARVEY, M. L. 2005. An alternative for extraction and storage of DNA from insects in forensic entomology. *J. Forensic Sci.* 50(3): 627-629.
- HIDE, G., HUGHES, J. M., AND McNUFF, R. 2003. A rapid and simple method of detection of *Blepharisma japonicum* using PCR and immobilization on FTA® paper. *BMC Ecol.* 3: 7.
- INNIS, M. A., AND GELFAND, D. H. 1990. Optimization of PCRs, pp. 3-12 *In* M. A. Innis, D. H. Gelfand, J. J. Sninsky, and T. J. White [eds.], *PCR Protocols: A Guide to Methods and Applications*. Academic Press, San Diego, CA, 482 pp.
- MOSCOSO H., THAYER, S. G., HOFACRE, C. L., AND KLEV-EN, S. H. 2004. Inactivation, storage, and PCR detection of Mycoplasma on FTA® filter paper. *Avian Dis.* 48: 841-850.
- OWENS, C. B., AND SZALANSKI, A. L. 2005. Filter paper for preservation, storage, and distribution of insect and pathogen DNA samples. *J. Med. Entomol.* 42(4): 709-711.
- SILVA E. S., GONTIJO, C. M. F., PACHECO, R. S., AND BRAZIL, R. P. 2004. Diagnosis of human visceral leishmaniasis by PCR using blood samples spotted on filter AND. *Genet. Mol. Res.* 3: 251-257.
- SMITH, L. M., AND BURGOYNE, L. A. 2004. Collecting, archiving and processing DNA from wildlife samples using FTA® databasing paper. *BMC Ecol.* 4: 4.

- TOKUDA, G., LO, N., WATANABE, H., SLAYTOR, M., MATSUMOTO, T., AND NODA, H. 1999. Metazoan cellulase genes from termites: intron/exon structures and sites of expression. *Biochim. Biophys. Acta.* 1447: 146-159.
- TOKUDA, G., LO, N., WATANABE, H., ARAKAWA, G., MATSUMOTO, T., AND NODA, H. 2004. Major alteration of the expression site of endogenous cellulases in members of an apical termite lineage. *Mol. Ecol.* 13: 3219-3228.
- WHATMAN, INC. 2002a. FTA® protocols: collect, transport, archive and access nucleic acids - all at room temperature; WB120047. Copyright Whatman Inc.
- WHATMAN, INC. 2002b. Whatman Application Note: Eluting Genomic DNA from FTA® Cards Using Room Temperature pH Treatment. Copyright Whatman Inc.