

## **Isolation and Characterization of Nine Microsatellite Loci from the Sycamore Lace Bug *Corythucha ciliata* (Hemiptera: Tingidae)**

Authors: Yang, Wen-Yan, Tang, Xiao-Tian, Cai, Li, Dong, Chang-Sheng, and Du, Yu-Zhou

Source: Florida Entomologist, 97(3) : 1070-1074

Published By: Florida Entomological Society

URL: <https://doi.org/10.1653/024.097.0310>

---

BioOne Complete (complete.BioOne.org) is a full-text database of 200 subscribed and open-access titles in the biological, ecological, and environmental sciences published by nonprofit societies, associations, museums, institutions, and presses.

Your use of this PDF, the BioOne Complete website, and all posted and associated content indicates your acceptance of BioOne's Terms of Use, available at [www.bioone.org/terms-of-use](http://www.bioone.org/terms-of-use).

Usage of BioOne Complete content is strictly limited to personal, educational, and non - commercial use. Commercial inquiries or rights and permissions requests should be directed to the individual publisher as copyright holder.

---

BioOne sees sustainable scholarly publishing as an inherently collaborative enterprise connecting authors, nonprofit publishers, academic institutions, research libraries, and research funders in the common goal of maximizing access to critical research.

# ISOLATION AND CHARACTERIZATION OF NINE MICROSATELLITE LOCI FROM THE SYCAMORE LACE BUG *CORYTHUCHA CILIATA* (HEMIPTERA: TINGIDAE)

WEN-YAN YANG<sup>1</sup>, XIAO-TIAN TANG<sup>1</sup>, LI CAI<sup>1</sup>, CHANG-SHENG DONG<sup>2</sup> AND YU-ZHOU DU<sup>1\*</sup>

<sup>1</sup>School of Horticulture and Plant Protection & Institute of Applied Entomology, Yangzhou University, Yangzhou 225009, China

<sup>2</sup>Guangling Agricultural Technology Extension and Service Center, Yangzhou 225009, China

\*Corresponding author; E-mail: yzdu@yzu.edu.cn

## ABSTRACT

The sycamore lace bug, *Corythucha ciliata* (Say) (Hemiptera: Tingididae) of North America, is an invasive pest of plane and sycamore trees (*Platanus* spp.) (Proteales: Plantanaceae), and has invaded many countries. To explore the population genetic structure and the invasion route by which *C. ciliata* reached China, we developed 9 highly polymorphic microsatellites loci by the FIASCO method. Polymorphism of the 9 loci was assessed in 48 individuals from 2 populations (Guiyang and Nanjing) in China. The number of alleles per locus ranged from 2 to 13. The observed ( $H_o$ ) and expected ( $H_e$ ) heterozygosities varied from 0.146 to 0.958 and 0.290 to 0.849, respectively, in Guiyang population. Likewise  $H_o$  and  $H_e$  varied from 0.483 to 0.739 and 0.443 to 0.865, respectively, in Nanjing population. Two loci (CA15 and GA365) showed significant deviations from the Hardy-Weinberg equilibrium (HWE) in Nanjing population. Moreover, loci CA200&GT26, GT26&TG100, and TG100&GA365 showed significant linkage disequilibria (LD) in the Guiyang population ( $P < 0.01$ ), and loci GT26 and GA5 ( $P < 0.01$ ) showed significant linkage disequilibria (LD) in the Nanjing population. Finally, we found 2 types of mutational events that could generate the new alleles, but the main mutation mechanism for the newly developed microsatellites was slippage in the repeat motif and in the flanking region. In future work, the nine loci identified here will be used to study the population genetic structures of *C. ciliata* populations in China and in putative regions of their origin, and investigate the probable route by which the pest reached China.

Key Words: microsatellite, *Corythucha ciliata*, population genetics, invasive routes

## RESUMEN

El chinche encaje del sicómoro, *Corythucha ciliata* (Say) (Hemiptera: Tingididae) de América del Norte, es una plaga invasora de plataneros y sicómoros (*Platanus* spp.) (Proteales: Plantanaceae), y ha invadido muchos países. Para explorar la estructura genética de la población y la ruta de invasión por el cual *C. ciliata* llegó a China, hemos desarrollado 9 loci de microsatélites altamente polimórficos por el método FIASCO. Se evaluó el polimorfismo de los 9 loci en 48 individuos de 2 poblaciones (Guiyang y Nanjing) en China. El número de alelos por locus varió de 2 a 13. El heterocigosis observado ( $H_o$ ) y el esperado ( $H_e$ ) varían de 0.146 a 0.958 y de 0.290 a 0.849, respectivamente, en la población de Guiyang. Del mismo modo el  $H_o$  y  $H_e$  variaron de 0.483 a 0.739 y 0.443-0.865, respectivamente, en la población de Nanjing. Dos loci (CA15 y GA365) mostraron desviaciones significativas del equilibrio de Hardy-Weinberg (EHW) en la población de Nanjing. Por otra parte, loci CA200 y GT26, GT26 y TG100 y TG100 y GA365 mostraron un desequilibrio de ligamiento (DL) significativo en la población de Guiyang ( $P < 0.01$ ), y loci GT26 y GA5 ( $P < 0.01$ ) mostraron un desequilibrio de ligamiento (DL) significativo en la población de Nanjing. Por último, encontramos 2 clases de eventos mutacionales que podrían generar los nuevos alelos, pero el principal mecanismo de la mutación de los microsatélites desarrollados recientemente fue el deslizamiento en la repetición de motivos y en la región de flaqueo. En trabajos futuros, los nueve loci identificados aquí se utilizarán para estudiar la estructura genética de la población de *C. ciliata* en China y en regiones putativas de su origen, e investigar la ruta probable por el cual la plaga llegó a China.

Palabras Clave: microsatélites, *Corythucha ciliata*, genética de poblaciones, rutas invasoras

The sycamore lace bug, *Corythucha ciliata* (Say) (Hemiptera: Tingidae) is a new invasive insect species in China from North America (Halbert et al. 1998) that previously had invaded many countries including France, Germany, Chile, Korea, Japan (Wulf et al. 1987; Prado 1990; Chung et al. 1996; D' Aguilar et al. 1997; Tokihiro et al. 2003 ). In invaded locations, *C. ciliata* feeds primarily on leaves of plane and sycamore trees (*Platanus* spp.; Proteales: Plantanaceae), reducing photosynthesis and promoting diseases, which may be followed by death of the foliage.

Although the physiology and ecology of *C. ciliata* and its control with pesticides have been investigated (Yoon et al. 2008; Ju et al. 2010, 2011a, 2011b), its population genetics is unknown. To better control this pest, an increased understanding of its population genetics and invasion routes is needed. Microsatellites markers can help identify the origins of newly established populations of invasive species, as well as their genetic makeup and their routes of migration (Behura 2006; Ascunce et al. 2011). However, the microsatellite loci of *C. ciliata* have not been reported and few expressed sequence tags (ESTs) of *C. ciliata* are available in the public domain, hindering the study of the population genetics and routes of migration of this species. Consequently, we used the FIASCO method (fast isolation by AFLP of sequences containing repeats) with slight modifications to develop an enriched library of microsatellite loci (Zane et al. 2002) to screen polymorphic loci. Here, we present sequences of 9 microsatellite loci for *C. ciliata*.

## MATERIALS AND METHODS

### Samples and DNA extraction

Adult *C. ciliata* samples were collected in 2010 from Guiyang, Guizhou Province and Nanjing, Jiangsu Province, China. Samples were identified and preserved in 100% ethanol, and then stored at -20 °C. Genomic DNA was extracted from individual samples using Axy-Prep Multisource Genomic DNA Miniprep Kit and stored at -20 °C until needed for PCR.

### Isolation of Microsatellite Markers

We used the FIASCO (fast isolation by AFLP of sequences containing repeats) method with slight modifications to develop an enriched library of microsatellite loci (Zane et al. 2002). The genomic DNA was first digested with the restriction enzyme MseI (BioLabs, Beijing, China) and ligated to MseI AFLP adaptor (5'-TACTCAG-GACTCAT-3'/5'-GACGATGAGTCCTGAG-3') in a total volume of 25 µL containing 250 ng of

genomic DNA, 1 × OnePhorAll buffer, 5.0 mM DTT, 50 µg/mL BSA, 1.0 µM adaptor, 200 µM ATP, 2.5 U of MseI (NEB), and 1.0 U of T4 DNA ligase (Promega). The reaction was then incubated at 37 °C for 3 h. The digestion-ligation products was diluted (1:10) and amplified with adaptor-specific primers (5'-GATGAGTCCT-GAGTAAN-3', MseI-N) in 20 µL reactions containing 1 × PCR buffer (10 mM Tris-HCl, pH 9.0, 50 mM KCl), MgCl<sub>2</sub> 1.5 mM, dNTPs 250 µM, MseI-N 0.5 µM, 1 U of Taq DNA polymerase (TaKaRa, Dalian, China) and 5 µL diluted digestion-ligation DNA. The PCR conditions were 5 min at 94 °C followed by 26 cycles of 30 s at 94 °C, 1 min at 53 °C, 1 min at 72 °C with a final extension time of 10 min at 72 °C. After denaturation at 95 °C for 5 min, the PCR products were hybridized for 1 h at 68 °C with biotinylated (GA)<sub>12</sub>, (GT)<sub>12</sub>, (CA)<sub>25</sub> and (TG)<sub>18</sub>, respectively. The DNA fragments hybridized to biotinylated probes were selectively captured by streptavidin coated magnetic beads (Streptavidin Magnesphere Paramagnetic Particles, Promega, Shanghai, China). The microsatellite-enriched DNA fragments were purified using PCR Cleanup Kit (Axygen, www.axxygen.com) and then amplified by MseI-N primers for the following PCR conditions: 3 min at 95 °C followed by 26 cycles of 30 s at 95 °C, 30 s at 53 °C, 45 s at 72 °C with a final extension time of 30 min at 72 °C. The purified PCR products were ligated into pGEMT Easy vectors (Promega, www.promega.com) and then transformed into *Escherichia coli* strain (DH5α). The positive clones were identified by PCR using M13 primers and visualized by agarose gel electrophoresis. All positive clones were sequenced in both directions using the BigDye Terminator Sequencing Kit (Applied BioSystems) and the ABI 3730XL Genetic Analyzer (PE Applied Biosystems, San Francisco, California, USA) with 2 vector-specific primers and internal primers for primer walking. Microsatellite sequences were identified by software SSRHunter 1.3 (Li & Wan 2005). Primer pairs for each microsatellite locus were designed by Primer Premier 5.0 software (<http://www.premierbiosoft.com/primerdesign/>).

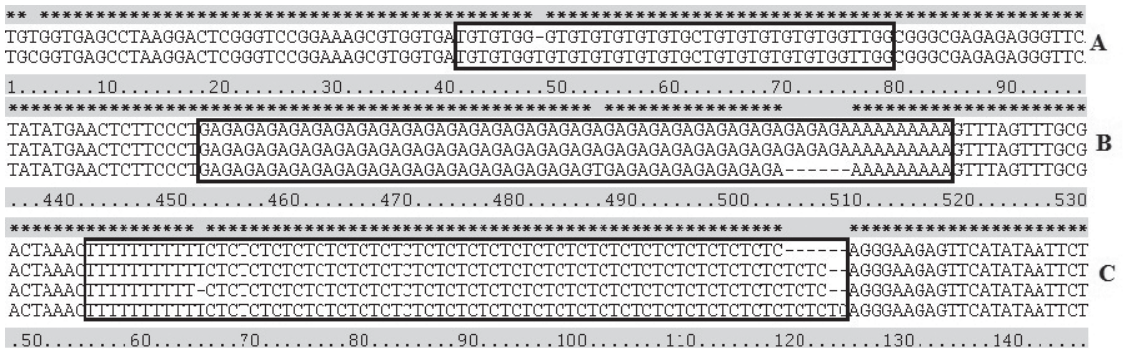
### PCR Amplification and Genotyping

Each primer pair was screened against 48 individuals of *C. ciliata*. Three kinds of fluorophores (FAM, HEX and TAMRA) were tagged with forward primers at the 5' end of each pair. PCR amplifications were conducted in 25 µL volumes including 1 × PCR buffer (10 mM TrisHCl, pH 9.0, 50 mM KCl), 1.5 mM MgCl<sub>2</sub>, 200 FM of each dNTPs, 50 ng genomic DNA, 0.75 U of Taq DNA polymerase (TaKaRa), 4 pmol of each primer. Conditions for PCR amplification were

TABLE 1. CHARACTERISTICS OF NINE MICROSATELLITE LOCI OF *CORYTHUCHA CILIATA*: GENBANK ACCESSION NUMBER, REPEAT MOTIF, ALLELE SIZE RANGE, ANNEALING TEMPERATURE (TA), NUMBER OF ALLELES (N), OBSERVED HETEROZYGOSITY ( $H_o$ ), EXPECTED HETEROZYGOSITY ( $H_e$ ) AND VALUE FROM THE TEST FROM THE EXACT TEST FOR THE HARDY-WEINBERG EQUILIBRIUM (P-HW).

Locus	Accession no	Repeat motif	Primer sequences (5'-3')	Fluorophore	Size range (bp)	Ta	NA		HO		HE		P-HW	
							Guiyang	Nanjing	Guiyang	Nanjing	Guiyang	Nanjing	Guiyang	Nanjing
CA200	KF803195	(CA)11	F: CACTATTGGTCTCGTCGT R: CCATTTTACTCCACTTTC	FAM	176-233	52	10	13	0.958	0.636	0.849	0.735	0.0474	0.0990
CA146	KF803194	(CA)11	F: GAGGATGGGAAAGGGTT R: GCTGGTTTGAGGGGGGAC	HEX	344-357	58	5	4	0.625	0.542	0.642	0.543	0.8114	0.0239
GT26	KF803198	(GT)10	F: CCATTTTACTCCACTTTC R: ATTGTCCTCGTCGTGATG	TAMRA	1173-195	52	9	7	0.905	0.556	0.828	0.762	0.3666	0.0202
GA70	KF803202	(CT)9	F: ACCACTCCACCTCCACCG R: AGTAAGGGCGAAGCAACA	TAMRA	179-195	55	3	3	0.542	0.583	0.630	0.443	0.4136	0.1910
TG100	KF803201	(GT)11	F: TTTCTCTGAAGACTGTGA R: GGGTGGGTAGCATCATTT	FAM	192-202	56	2	5	0.250	0.625	0.422	0.696	0.0603	0.0131
CA15	KF803200	(AC)7	F: AGGAATCTTCATCACATC R: TGACCGTTTCTTGACCAG	FAM	233-269	55	3	3	0.146	0.483	0.290	0.582	0.0901	0.0000*
CA7	KF803197	(CA)12	F: AGCGGTGCGGTAGCGAAT R: TTTGCGTTTTTGAAGGAGC	TAMRA	347-362	54	3	11	0.542	0.739	0.583	0.865	0.9044	0.0388
GA365	KF803199	(AG)26	F: CCGACTCAGTACCACCGA R: GACTTCATAATGTCCTCC	TAMRA	168-219	54	5	9	0.750	0.500	0.733	0.793	0.8758	0.0039*
GA5	KF803196	(TC)13	F: CCCAGCCCTAGAGTCATT R: GCACCTCCCTCCTTTTCA	HEX	310-369	57	4	9	0.391	0.727	0.397	0.849	1.0000	0.0383

\*denotes a significant deviation from the Hardy-Weinberg equilibrium ( $P < 0.01$ ), after sequential Bonferroni's correction of the significance threshold.





populations in China and in putative regions of their origin, and thereby investigate the probable route by which the pest reached China, as well as its subsequent spread in China.

#### ACKNOWLEDGMENTS

Special thanks to Y. Ji and J. Xu, students at Yangzhou University. This work was supported by Science & Technology Program of Yangzhou (YZ2010064) and the National Natural Science Foundation of China (31300467).

#### REFERENCES CITED

- ASCUNCE, M. S., YANG, C. C., OAKLEY, J., CAICATERRA, L., WU, W. J., SHIH, C. J., GOUDET, J., ROSS, K. G., AND SHOEMAKER, D. 2011. Global invasion history of the fire ant *Solenopsis invicta*. *Science* 331: 1066-1068.
- BEHURA, S. K. 2006. Molecular marker systems in insects: current trends and future avenues. *Mol. Ecol.* 15: 3087-3113.
- CHUNG, Y. J., KWON, T. S., YEO, W. H., BYUN, B. K., AND PARK, C. H. 1996. Occurrence of the sycamore lace bug, *Corythucha ciliata* (Say) (Hemiptera: Tingidae) in Korea. *Korean J. Appl. Entomol.* 35: 137-139.
- D'AGUILAR, J., PRALAVORIO, R., AND PABASSE, J. M. 1977. Introduction into France of the plane tree lace bug: *Corythucha ciliata* (Say) (Heteroptera, Tingidae). *Bull. Soc. Entomol. France* 82: 2-6.
- DOMINIAK, B. C., GILLESPIE, P. S., WORSLEY, P., AND LOCKER, H. 2008. Survey for sycamore lace bug *Corythucha ciliata* (Say) (Hemiptera: Tingidae) in New South Wales during 2007. *Gen. Appl. Entomol.* 37: 27-30.
- HALLBERT, S. E., AND MEEKER, J. R. 1998. The sycamore lace bug, *Corythucha ciliata* (Say) (Hemiptera: Tingidae). *Entomology Circular* (Gainesville), 387: 2. Florida Dept. Agric. & Consumer Serv., Div. Plant Ind. [http://www.fl-dof.com/publications/fh\\_pdfs/Sycamore%20Lace%20Bug.pdf](http://www.fl-dof.com/publications/fh_pdfs/Sycamore%20Lace%20Bug.pdf).
- HALBERT, S. E., AND MEEKER, J. R. 2007. The sycamore lace bug, *Corythucha ciliata* (Say) (Hemiptera: Tingidae). *Entomology Circular* (Gainesville) EENY-190, University of Florida. 2 pp. Available at <http://entomology.ifas.ufl.edu/creatures>.
- JU, R. T., WANG, F., AND LI, B. 2011a. Effects of temperature on the development and population growth of the sycamore lace bug, *Corythucha ciliata*. *J. Insect Sci.* 11, 16 available online: [insectscience.org/11.16](http://insectscience.org/11.16).
- JU, R. T., XIAO, Y. Y., AND LI, B. 2011b. Rapid cold hardening increases cold and chilling tolerances more than acclimation in the adults of the sycamore lace bug, *Corythucha ciliata* (Say) (Hemiptera: Tingidae). *J. Insect Physiol.* 57: 1577-1582.
- JU, R. T., XIAO, Y. Y., WANG, F., AND LI, B. 2010. Supercooling capacity and cold hardiness of the adults of the sycamore lace bug, *Corythucha ciliata* (Hemiptera: Tingidae). *CryoLetters* 31: 445-453.
- LI, Q., AND WAN, J. M. 2005. SSRHunter: development of a local searching software for SSR sites. *Hereditas* 27: 808-810.
- MARSHALL, T. C., SLATE, J., KRUK, L. E. B., AND PEMBERTON, J. M. 1998. Statistical confidence for likelihood-based paternity inference in natural populations. *Mol. Ecol.* 7: 639-655.
- MAZZON, L., AND GIROLAMI, V. 2000. The sycamore lace bug. *Sherwood-Forested Alberi Oggi* 6: 27-28.
- PELLIZZARI, G., AND MONTA, L. D. 1997. The insect pests introduced into Italy between 1945 and 1995. *Informatore Fitopatologico* 47(10): 4-12.
- PRADO, C. E. 1990. Presence in Chile of *Corythucha ciliata* (Say) (Hemiptera: Heteroptera: Tingidae). *Rev. Chilena Entomol.* 18: 53-55.
- RAYMOND, M., AND ROUSSET, F. 1995. GENEPOP (version 1.2): population genetics software for exact tests and ecumenicism. *J. Heredity* 86: 248-249.
- RICE, W. R. 1989. Analyzing tables of statistical tests. *Evol.* 43: 223-225.
- STREITO, J. C. 2006. Note sur quelques espèces envahissantes de Tingidae: *Corythucha ciliata* (Say, 1932), *Stephanitis pyrioides* (Scott, 1874) et *Stephanitis takeyai* Drake & Maa, 1955 (Hemiptera Tingidae). *Entomologiste* 62: 31-36.
- TOKIHIRO, G., TANAKA, K., AND KONDO, K. 2003. Occurrence of the sycamore lace bug, *Corythucha ciliata* (Say) (Heteroptera: Tingidae) in Japan. *Res. Bull. Plant Prot. Serv.* 39: 85-87.
- VAN OOSTERHOUT, C., HUTCHINSON, W. F., WILLS, D. P. M., AND SHIPLEY, P. 2004. MICRO-CHECKER: Software for identifying and correcting genotyping errors in microsatellite data. *Mol. Ecol. Notes* 4: 535-538.
- WULF, A., AND BUTIN, H. 1987. Diseases and pests of plane tree. *Nachrichtenblatt des Deutschen Pflanzenschutzdienstes* 39: 145-148.
- YOON, C., YANG, J. O., KANG, S. H., AND KIM, G. H. 2008. Insecticidal properties of bistrifluron against sycamore lace bug, *Corythucha ciliata* (Hemiptera: Tingidae). *J. Pesticide Sci.* 33: 44-50.
- ZANE, L., BARGELLONI, L., AND PATARNELLO, T. 2002. Strategies for microsatellite isolation: a review. *Mol. Ecol.* 11: 116.