

Foundation Pattern, Productivity and Colony Success of the Paper Wasp, *Polistes versicolor*

Authors: Alves de Oliveira, Simone, Monteiro de Castro, Mariana, and Prezoto, Fábio

Source: Journal of Insect Science, 10(125) : 1-10

Published By: Entomological Society of America

URL: <https://doi.org/10.1673/031.010.12501>

The BioOne Digital Library (<https://bioone.org/>) provides worldwide distribution for more than 580 journals and eBooks from BioOne's community of over 150 nonprofit societies, research institutions, and university presses in the biological, ecological, and environmental sciences. The BioOne Digital Library encompasses the flagship aggregation BioOne Complete (<https://bioone.org/subscribe>), the BioOne Complete Archive (<https://bioone.org/archive>), and the BioOne eBooks program offerings ESA eBook Collection (<https://bioone.org/esa-ebooks>) and CSIRO Publishing BioSelect Collection (<https://bioone.org/csiro-ebooks>).

Your use of this PDF, the BioOne Digital Library, and all posted and associated content indicates your acceptance of BioOne's Terms of Use, available at www.bioone.org/terms-of-use.

Usage of BioOne Digital Library content is strictly limited to personal, educational, and non-commercial use. Commercial inquiries or rights and permissions requests should be directed to the individual publisher as copyright holder.

BioOne is an innovative nonprofit that sees sustainable scholarly publishing as an inherently collaborative enterprise connecting authors, nonprofit publishers, academic institutions, research libraries, and research funders in the common goal of maximizing access to critical research.



Foundation pattern, productivity and colony success of the paper wasp, *Polistes versicolor*

Simone Alves de Oliveira^a, Mariana Monteiro de Castro^b and Fábio Prezoto^c

Programa de Pós-Graduação em Ciências Biológicas - Comportamento e Biologia Animal, Laboratório de Ecologia Comportamental, Universidade Federal de Juiz de Fora, Campus Universitário, Martelos, Juiz de Fora, Minas Gerais State, Brazil. Cep 36036-900.

Abstract

Polistes versicolor (Olivier) (Hymenoptera: Vespidae) colonies are easily found in anthropic environments; however there is little information available on biological, ecological and behavioral interactions of this species under these environmental conditions. The objective of this work was to characterize the foundation pattern, the productivity, and the success of colonies of *P. versicolor* in anthropic environments. From August 2003 to December 2004, several colonies were studied in the municipal district of Juiz de Fora, Southeastern Brazil. It was possible to determine that before the beginning of nest construction the foundress accomplishes recognition flights in the selected area, and later begins the construction of the peduncle and the first cell. As soon as new cells are built, the hexagonal outlines appear and the peduncle is reinforced. Foundation of nests on gypsum plaster was significantly larger ($p < 0.0001$; χ^2 test) in relation to the other types of substrate, revealing the synantropism of the species. On average, the *P. versicolor* nest presents 244.2 ± 89.5 (100-493) cells and a medium production of 171.67 ± 109.94 (37-660) adults. Cells that produced six individuals were verified. Usually, new colonies were founded by an association of females, responsible for the success of 51.5%. Although these results enlarge knowledge on the foundation pattern of *P. versicolor* in anthropic environments, other aspects of the foundation process require further investigation.

Keywords: anthropic environments, foundresses, independent founding, nesting behavior, social wasps

Correspondence: ^a sibiolf@yahoo.com.br, ^b mmcbio@yahoo.com.br, ^c fabio.prezoto@ufjf.edu.br

Received: 23 October 2008, **Accepted:** 29 June 2009

Copyright : This is an open access paper. We use the Creative Commons Attribution 3.0 license that permits unrestricted use, provided that the paper is properly attributed.

ISSN: 1536-2442 | Vol. 10, Number 125

Cite this paper as:

de Oliveira SA, de Castro MM, Prezoto F. 2010. Foundation pattern, productivity and colony success of the paper wasp, *Polistes versicolor*. *Journal of Insect Science* 10:125 available online: insectscience.org/10.125

Introduction

The neotropical social wasp, *Polistes versicolor* (Olivier) (Hymenoptera: Vespidae), possesses nests consisting of a single comb fixed to the substratum by a peduncle (Richards 1978). The simple arrangement of suspended cells seems to protect the colony from ant attacks, which constitute the largest predatory pressure for social wasps (Jeanne 1975, 1980; Post and Jeanne 1985).

P. versicolor colonies can be found in different types of substrata such as leaves, branches, roots, stones, and also in abandoned nests of other social wasp species. The nests are built with vegetable material, chewed and mixed with secretion of salivary glands, and the peduncle is resinous (West-Eberhard 1969; Spradbery 1973; Reeve 1991). In anthropic areas, the presence of nests using several structures as nesting substrata have been observed (Fowler 1983; Giannotti 1992; Lima et al. 2000; Prezoto 2001; Prezoto et al. 2007). However, the behavior and the biology of this species in the anthropic environment are little understood.

During nest foundation the solitary nesting females typically construct and oviposit in combs with from 20 to 30 cells (West-Eberhard 1969). A *Polistes* foundress has at least two reproductive options besides solitary nest founding. She can join conspecific females in another nest or attempt to take over a nest initiated by a conspecific female (Reeve 1991). This behavior creates a series of advantages to the new nests, as productivity can increase and consequently, colony success can increase, offspring survival can improve in the case of dominant female death, as well as providing a more effective defense against natural enemies (West-Eberhard 1969; Itô

1985; Butignol 1992; Giannotti and Mansur 1993; Tannure and Nascimento 1999; Sinzato and Prezoto 2000; Tibbetts and Reeve 2003). During the colony's foundation (i.e. prior to eclosion of new adults), aggressive interactions happen among the nestmates, many times involving intense fights (West-Eberhard 1969; Gamboa and Dropkin 1979; Strasmann 1989).

Colony productivity of the *Polistes* sp. (Latreille) in neotropical areas was already studied for different species, including *P. versicolor* (Gobbi and Zuchi 1985; Gobbi et al. 1993; Ramos and Diniz 1993), *Polistes lanio lanio* (Giannotti 1992), *Polistes cinerascens*, *Polistes canadensis* (Giannotti 1997; Santos and Gobbi 1998) and *Polistes simillimus* (Prezoto 2001). These studies corroborated the Michener (1964) paradox of an inverse relationship between the group size and per capita productivity.

The objective of this work was to characterize the foundation pattern, the productivity and the colony success of *P. versicolor* in anthropic environments.

Material and Methods

The study was conducted from August 2003 to December 2004 in Juiz de Fora municipal district (21° 46' S; 43° 21' W, medium altitude of 678 m), Minas Gerais state, Southeastern Brazil, characterized by a high tropical climate according to the Koppen Scale. For obtaining data, the work was divided into three stages: foundation pattern characterization and nesting substrata, nest productivity analysis, and attendance and success of the colonies.

Foundation pattern characterization and nesting substrata

For the information collection on the foundation pattern of *P. versicolor* colonies, weekly visits to the colonies took place at different places in the city of Juiz de Fora, preferably at the end of the afternoon (17 h), when the individuals were finishing their foraging activities, allowing a more precise counting of the number of foundresses present in the colony. During the visits, the following parameters were noted: number of females involved during the colony foundation phase ($n = 100$ nests) and substratum type used for the colony foundation ($n = 192$). In addition, behavioral information (*ad libitum* sensu Altmann 1974) exhibited by the individuals was obtained relating to the new nest construction process.

Nest productivity analysis

For the productivity analysis, 37 *P. versicolor* nests collected at different places around the study area were sampled. The nests were dissected, and the information schematized in mappings in standardized leaves. For each nest, the following parameters were observed: total number of cells, total of productive cells, total of produced adults (by the counting of meconium layers deposited in the cells), number of adults produced per cell, and the ratio of produced adults/cells.

Attendance and success of the colonies

The *P. versicolor* colonies were considered successful when they reached the post-emergence phase, according to the classification proposed by Jeanne (1972), with the production of at least one adult. A hundred colonies were followed from the foundation phase to the first adult's emergence and/or abandonment of the nest. The colony was considered unsuccessful when, for three consecutive visits, the complete absence of

adults and immatures was observed, besides the lack of eggs postures and new cells construction.

Statistical analyses

In order to verify the difference existence among the categories of nesting substrata used by *P. versicolor*, the χ^2 test was applied. The Spearman correlation test was used to correlate the total number of cells and the total number of adults produced in the sampled nests. The tests were completed using Bioestat 4.0.

Results and Discussion

Foundation pattern characterization of the colonies

The *P. versicolor* nests were built with chewed vegetable material, which was added in the peduncle and in the cells, resulting in a grayish coloration. Before beginning the construction, the foundress made recognition flights, and inspected the structures to be used for the nest (Figure 1A). This construction pattern is similar to those described for other *Polistes* species (West-Eberhard 1969; Reeve 1991; Karsai and Theraulaz 1995).

Once the place for the new colony foundation was established, the nest construction began, starting with the peduncle. This was followed by construction of the first cells with a circular format (Figures 1B and 1C), and as the number of cells increased, these assumed hexagonal outlines (Figures 1D and 1E). With the increase in number of cells, the peduncle is reinforced through the addition of chewed vegetable fiber. Colony contact to the substratum was reduced by the fine peduncle that represents an defensive adaptation against predatory pressure from ants (Jeanne 1975).

Six behavioral actions exhibited by *P. versicolor* during nest construction were identified, corroborating the description of the genus by Evans and West-Ebehard (1970):

- 1) Inspection of sites for nest foundation which is characterized by flights close to the selected area. The foundress touches the substratum with the antennae.
- 2) Construction of the pedicle: vegetable fiber is chewed with saliva, which is then attached to the substrate for construction of the peduncle in thread form.
- 3) Initial cell construction: after construction of the peduncle, the initial cell is constructed with a circular format. During this activity, the female constantly touches the cell sides with the antennae.
- 4) Construction of peripheral cells: new cells are added around the initial cell, assuming hexagonal outlines as they are attached to neighboring cells.
- 5) Cell prolongation: as larvae develop,

chewed vegetable fiber is added to the extremities of the cells, elevating their height.

- 6) Peduncle invigoration: as cell number increases, the peduncle is reinforced with construction material, which makes it thicker to support the nest as it enlarges.

Substrata used for nesting

Six substrata categories used for nesting by *P. versicolor* were recognized: gypsum plaster ($n = 115$; 59.9%), metal ($n = 35$; 18.3%), wood ($n = 30$; 15.6%), several materials ($n = 8$; 4.2%), glass ($n = 2$; 1.0%) and vegetation ($n = 2$; 1.0%) (Table 1). Occurrence of nests on gypsum plaster was significantly larger ($p < 0.0001$; chi-square test) relative to the other substrates. These nests were found mainly at high places in buildings, where the nests presumably obtained greater protection from human interference, weather, and direct solar irradiation.

A large number of *Polistes* species use human constructions as nesting substratum (Fowler 1983; Butignol 1992; Giannotti and Mansur 1993); although they can also use natural

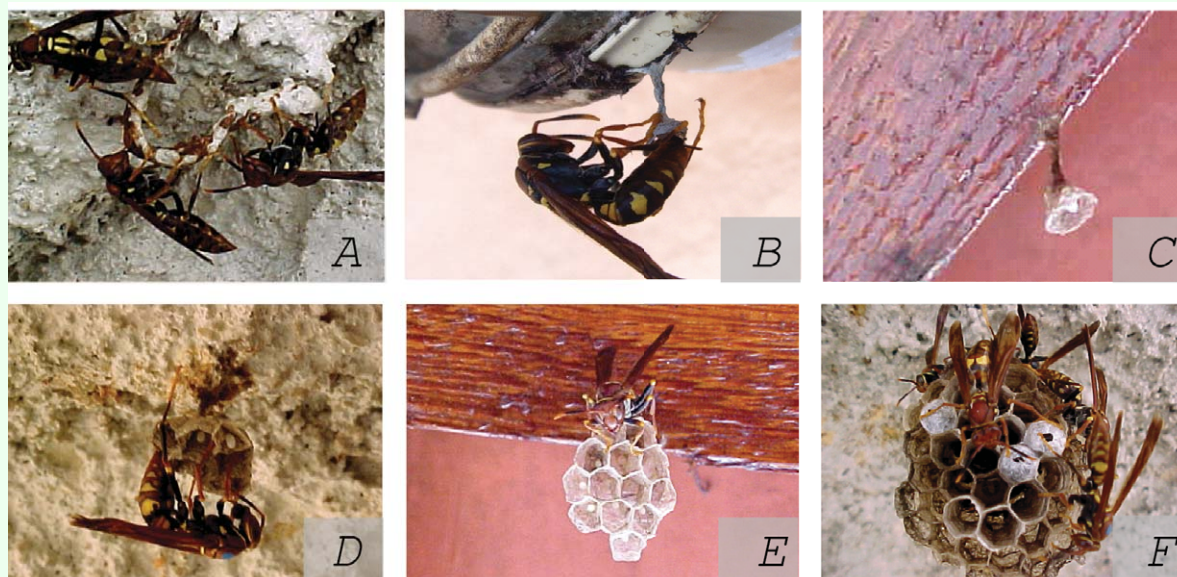


Figure 1. *Polistes versicolor* colony construction pattern in an anthropic environment, Juiz de Fora, Minas Gerais state, Southeastern Brazil. A = place inspection for foundation, B = oviposition behavior in the first cell, C = first cell with circular format and egg, D = construction behavior by the female in the solitary foundation, E = hexagonal format of cells in the solitary foundation, and F = foundress association. High quality figures are available online.

environment, such as plants and termite colonies (Makino 1985; Henriques et al. 1992; Claperton 2000; Sinzato and Prezoto 2000). The results of this study demonstrated the *P. versicolor* synantropism in relation to the constructions with little human interference, which is a behavior already described for the species (Butignol 1992; Sinzato and Prezoto 2000), as well as for *P. lanio* (Giannotti 1992) and *P. simillimus* (Prezoto 2001).

The vegetation present in the anthropic environment was used by a small number of colonies, that might be attributed to the fragility of the plants, that consisted of species used for gardening that did not offer appropriate support for the nest, and exposed the nest to the stress of weather.

Lima et al. (2000) studied the substrata used by the social wasps in an area close to this study area, and they verified that the *Polistes* species found nested preferably in human constructions; finding nests in the vegetation was rare. Butignol (1992) observed that the plants used as substratum by *P. versicolor*, in Florianópolis, south of Brazil, had perennial leaves, such as *Acacia podzarilifolia*, *Fucreasea gigantea* and *Acalipa wilkesianae*. The use of plants as nesting substratum in anthropic environments was also observed by Giannotti (1995), who recorded nine *Polistes subsericeus* colonies in a single *Pandanus veitichi* (Pandanaceae) plant. The author suggested that this plant offers a protected and cryptic shelter for this species' colonies. Although the anthropic environment offers

nesting resources, some species demonstrate preference for nesting in the natural environment, as observed by Claperton (2000) for *Polistes humilis* and *Polistes chinensis antennalis*.

P. versicolor foundations were also registered at places used previously by other conspecific colonies (*n* = 25). This behavior was also registered by Giannotti (1992) for 12 *P. lanio* colonies and by Prezoto (2001) for 13 *P. simillimus* colonies. Prezoto (2003) suggested that this behavior reflects the ability to perceive and analyze information regarding the appropriate nesting sites perhaps including odor left by an old colony that could be an incentive for nest foundation.

Colony productivity

It was verified that the medium number of cells produced by *P. versicolor* nests was 244.2 ± 89.5 (100-493); the unproductive cells percentage was 44.5% (13.6-72.2%), and the average number of adults produced per nest was 171.67 ± 109.94 (37-660) (Table 2). The ratio of individuals produced per cell was 0.66, registering a maximum of six uses in a single cell.

Gobbi and Zucchi (1985) studied the productivity of *P. versicolor* in an anthropic area, the municipality of Ribeirão Preto, São Paulo state, Southeastern Brazil, in 1975 and 1976, and they observed a variation in the number of cells produced (191.80 ± 56.51 and 221.67 ± 132.05, respectively), irrespective of the number of adults produced those years

Table 1. Substrata categories used for nesting by *Polistes versicolor* in an antropic environment in southeast Brazil.

Substrata categories	Nests number	Percentage (%)
Gypsum plaster	115	59.9
Metal	35	18.3
Wood	30	15.6
Several materials	8	4.2
Glass	2	1
Vegetation	2	1
Total	192	100

(98.70 ± 40.09 in 1975 and 174.61 ± 153.20 in 1976). Based on these results, the authors suggested that *P. versicolor* may present short cycle colonies (some months), as information was registered in 1975 and long cycle colonies (around a period of a year), as registered for those colonies studied in 1976, what favored a larger productivity of the latter. The results found in the present study are similar to those verified by Gobbi and Zucchi (1985) for the colonies studied in 1976. This suggests that the colonies studied presented a long cycle,

which is a common occurrence in anthropic areas.

In a comparative work, Gobbi et al. (1993) studied *P. simillimus* and *P. versicolor* productivity, and they verified an average of 391.3 ± 302.34 and 80.0 ± 114.88 cells per nest, respectively. About 60% of the *P. simillimus* colonies used the cells to produce two adult generations, while for *P. versicolor*, only 25% of the colonies used cells more than once. However, for *P. versicolor* the authors

Table 2. Comparative data of 37 nests' productivity by *Polistes versicolor* collected in an antropic environmet in southeast Brazil.

Colony number	Cells total number	Number of utilizations						% of unproductive cells	Adults produced	Adults produced/ cell
		1	2	3	4	5	6			
1	100	35	1	-	-	-	-	64	37	37
2	102	31	4	1	-	-	-	64.7	40	0.39
3	108	58	-	-	-	-	-	46.3	58	0.54
4	140	50	-	-	-	-	-	64.3	50	0.36
5	152	78	8	-	-	-	-	43.4	94	0.62
6	159	93	-	1	-	-	-	41.5	93	0.58
7	169	23	23	-	-	-	-	72.2	72	0.43
8	175	79	7	-	-	-	-	50.8	93	0.53
9	175	83	21	7	3	-	-	34.8	158	0.9
10	177	86	4	-	-	-	-	49.1	94	0.53
11	186	104	5	-	-	-	-	41.4	114	0.61
12	190	64	18	4	2	1	-	53.1	125	0.65
13	194	74	21	-	-	-	-	51	116	0.6
14	205	126	-	-	-	-	-	38.5	126	0.61
15	206	110	26	3	-	-	-	32.5	171	0.83
16	210	106	-	-	-	-	-	49.5	106	0.5
17	221	83	26	2	-	-	-	49.8	141	0.64
18	226	92	-	-	-	-	-	59.3	92	0.4
19	230	155	22	-	-	-	-	23	199	0.86
20	246	102	32	-	-	-	-	45.5	166	0.67
21	248	130	42	14	-	-	-	25	256	1.03
22	274	126	-	-	-	-	-	54	126	0.46
23	274	157	57	6	-	-	-	56.2	289	1.05
24	278	190	15	-	-	-	-	26.2	220	0.79
25	279	144	33	17	-	-	-	30.5	261	0.93
26	290	175	22	12	-	-	-	28	255	0.88
27	296	150	6	-	-	-	-	47.3	162	0.55
28	302	184	1	-	-	-	-	38.7	186	0.61
29	214	151	3	-	-	-	-	51	157	0.73
30	320	178	3	-	-	-	-	43.4	184	0.57
31	341	165	28	5	-	-	-	41.9	236	0.69
32	351	170	20	3	-	-	-	45	219	0.62
33	353	196	21	1	-	-	-	38.2	241	0.68
34	362	134	68	2	-	-	-	43.7	272	0.75
35	374	191	40	5	-	-	-	36.9	286	0.76
36	406	183	7	-	-	-	-	53.2	197	0.48
37	493	291	76	31	19	6	3	13.6	660	1.33
Average	243.9	-	-	-	-	-	-	44.5	171.7	0.66

found cells that produced three generations. Giannotti (1997) verified that *P. cinerascens* nests in Rio Claro, São Paulo, included 102.9 cells and 94.2 individuals on average per nest, whose adult/cell ratio was 0.8 and some cells produced up to four individuals. Santos and Gobbi (1998), in a Savanna area in Bahia, verified that the *P. canadensis* nests possess 184.17 (29-477) cells on average, which produce 163 (10-576) individuals on average, with a single cell able to produce up to four individuals.

According to Prezoto (2001), *P. simillimus* produces nests with about 337.28 (8-1325) cells, and 57.21% (4.38-95.46%) of these are unproductive, reflecting a small number of reutilizations (36% for two uses and 24% for three). He also affirms that *P. simillimus* nests can produce 256.36 (1-1355) adults on average, with a ratio of 0.44 (0.04-1.02) adults produced per cell, a smaller value than the one found for *P. versicolor* in our study.

There was a positive correlation ($r = 0.8498$; $p < 0.001$, Spearman correlation test) between the total number of cells and the total number of adults produced by the *P. versicolor* nests. As the colonies grew, there was an increase in the number of adults produced, as well as more cell reutilization, while for other species the number of reutilizations is smaller, as in *P. simillimus* (Prezoto 2001). Ramos and Diniz (1993), also studying *P. versicolor* in an urban area of Brasília, observed a positive correlation ($r = 0.902$, $p < 0.001$) between the number of cells and the number of adults produced, and the cells were used up to four times.

The *P. versicolor* unproductive cells were concentrated on periphery of the comb, which was also noted for *P. canadensis* (Santos and Gobbi 1998) and *P. simillimus* (Prezoto

2001), and the cells with the largest number of utilizations were located in close proximity to the peduncle and in the central nest area, that are the oldest part of the comb. This disposition can work as a strategy against the predatory pressure, parasitism and reproductive conflicts, all mentioned by Gobbi et al. (1993) as factors that impose limits on the number of cells built in *Polistes* nests.

Colony success

Most of the new *P. versicolor* nests were founded by a foundresses association ($n = 68$) (Figure 1F), which was responsible for the largest number of successful colonies ($n = 35$; 51.5%). However, foundation by solitary females presented smaller incidence ($n = 32$), whose success was even smaller ($n = 3$; 9.4%).

Studies accomplished at other places in Brazil describe foundress association as a foundation type commonly observed for *P. versicolor* (Itô 1985; Butignol 1992; Giannotti and Mansur 1993; Ramos and Diniz 1993; Tannure and Nascimento 1999; Sinzato and Prezoto 2000). Females association is also a common strategy in other neotropical species such as *Polistes ferrerri* (Tannure and Nascimento 1999), *P. canadensis* (Itô 1985) and *P. lanio* (Giannotti 1992). However, Prezoto (2001) observed that the foundation by a single female constitutes 56.3% of *P. simillimus* foundations, with success of 37.09% of them. In spite of that, the author observed that, even being the smallest part of the total foundations, the foundress association was responsible for the largest number of successful colonies in *P. simillimus*.

Itô (1985) observed that in colonies with a larger number of foundresses the duration of the pre-emergence phase period was reduced and the group size was related positively with

the number of built cells, and these colonies were more productive. However, the author found that productivity of individual foundresses was lower in these colonies. Therefore, the females' association during the foundation is interpreted as an optimization strategy, in which ecological pressures such as parasitism and usurpation, social pressures such as the effects of the ergonomic synergism, and the increase of survival levels are all associated (West-Eberhard 1969; Gamboa 1978; Gibo 1978; Strassmann 1981, 1989; Itô 1985; Reeve 1991; Wenzel 1996).

The high failure number (90.06%) of the colonies founded by a single female *P. versicolor* in the present study occurred mainly because the foundress abandoned the nest during the initial colony establishment phase, before the larvae appeared. This same phenomenon was described by Tannure and Nascimento (1999) for the same species. It is believed that this behavior is associated with the fact that the wasps migrate in search of association with other foundresses. Other factors as foundress death or disappearance and dominance disputes also promote colony failure in *Polistes* species (Reeve 1991; Giannotti and Mansur 1993; Tannure and Nascimento 1999; Prezoto 2001).

This study's results demonstrate that *P. versicolor* nesting behavior is very similar to that described for other *Polistes* species. In an anthropic environment, *P. versicolor* exhibited a preference for artificial substrata for nesting, which probably provides larger longevity for the nests due to protection from the stress of weather. In this type of environment, usually a group of females found their nests in different climatic situations, which results in production of colonies of various sizes and also causes a different productivity among them. Although

these results enlarge knowledge on the *P. versicolor* foundation pattern in anthropic environments, there are many subjects needing further study mainly to increase knowledge about nesting behavior of other neotropical *Polistes* species.

Acknowledgements

The authors would like to thank the Coordenação de Aperfeiçoamento de Pessoal de Nível Superior (CAPES) and the Programa de Pós-graduação em Ciências Biológicas – Comportamento e Biologia Animal of Universidade Federal de Juiz de Fora for the financial support.

References

-
- Altmann J. 1974. Observational study of behavior: Sampling methods. *Behaviour* 49: 227-267.
- Butignol CA. 1992. Observações sobre a bionomia da vespa predadora *Polistes versicolor* (Olivier, 1791) (Hymenoptera, Vespidae) em Florianópolis/SC. *Anais da Sociedade Entomológica do Brasil* 19(2): 201-206.
- Clapperton BK. 2000. Nesting biology of Asian paper wasps *Polistes chinensis antennalis* Perez, and Australian paper wasps *Polistes humilis* (Fabricius) (Hymenoptera, Vespidae) in northern New Zealand, New Zealand. *Journal of Zoology* 27(3): 189-195.
- Evans HE, West-Eberhard MJ. 1970. *The Wasps*. University of Michigan.
- Fowler HG. 1983. Human effects on nest survivorship of urban synanthropic wasps. *Urban Ecology* 7: 137-143.

- Gamboa GJ. 1978. Intraspecific defense: Advantage of social cooperation among paper wasp foundresses. *Science* 199: 1463-1465.
- Gamboa GJ, Dropkin JA. 1979. Comparisons of behaviors in early vs. late foundress associations of the paper wasp, *Polistes metricus* (Hymenoptera: Vespidae). *Canadian Entomologist* 111: 919-926.
- Giannotti E. 1997. Biology of the wasp *Polistes (Epicnemius) cinerascens* Saussure (Hymenoptera, Vespidae). *Anais da Sociedade Entomológica do Brasil* 26(1): 61-66.
- Giannotti E. 1995. Notes on the biology of *Polistes (Epicnemius) subsericeus* Saussure, 1854 (Hymenoptera, Vespidae). *Bioikos* 9(1): 16-21.
- Giannotti E. 1992. *Aspectos biológicos e etológicos da vespa social neotropical Polistes (Aphanilopterus) lanio lanio (Fabricius, 1775) (Hymenoptera, Vespidae)*. Tese de Doutorado, UNESP.
- Giannotti E, Mansur CB. 1993. Dispersion and foundation of new colonies in *Polistes versicolor* (Hymenoptera, Vespidae). *Anais da Sociedade Entomológica do Brasil* 22(2): 307-316.
- Gibo DL. 1978. The selective advantage of foundress associations in *Polistes fuscatus* (Hymenoptera, Vespidae): A field study of the effects of predation on productivity. *Canadian Entomologist* 110: 519-540.
- Gobbi N, Zucchi R. 1985. On the ecology of *Polistes versicolor versicolor* (Olivier) in Southern Brazil (Hymenoptera, Vespidae, Polistini). II. Colonial productivity. *Naturalia* 10: 21-25.
- Gobbi N, Fowler HG, Netto JC, Nazareth SL. 1993. Comparative colony productivity of *Polistes simillimus* and *Polistes versicolor* (Hymenoptera, Vespidae) and the evolution of paragyny in the Polistinae. *Zoogischen Jahrbucher* 97: 239-243.
- Henriques RPB, Rocha IRD, Kitayama K. 1992. Nest density of some social wasp species in cerrado vegetation of Central Brazil (Hymenoptera, Vespidae). *Entomologia Generalis* 17(4): 265-268.
- Itô Y. 1985. A comparison of intra-colony aggressive behaviours among five species of Polistine wasps (Hymenoptera, Vespidae). *Zoological Tierpsychology* 68: 152-167.
- Jeanne RL. 1980. Evolution of social behavior in the Vespidae. *Annual Review of Entomology* 25: 371-396.
- Jeanne RL. 1975. The adaptiveness of social wasp nest architecture. *Quarterly Review of Biology* 50: 267-87.
- Jeanne RL. 1972. Social biology of the neotropical wasp *Mischocyttarus drewseni*. *Bulletin of the Museum of Comparative Zoology* 144: 63-150.
- Karsai I, Theraulaz G. 1995. Nest building in a social wasp: Postures and constraints (Hymenoptera, Vespidae). *Sociobiology* 26(1): 83-114.
- Lima MAP, Lima JR, Prezoto F. 2000. Levantamento dos gêneros, flutuação das colônias e hábitos de nidificação de vespas sociais (Hymenoptera, Vespidae), no campus da UFJF, Juiz de Fora, MG. *Revista Brasileira de Zoociências* 2(1): 69-80.
- Makino S. 1985. List of parasitoides of Polistine wasps. *Sphecos* 10: 20-25.

- Michener CD. 1964. Reproductive efficiency in relation to colony size in hymenopterous societies. *Insectes Sociaux* 11: 317-341.
- Post DC, Jeanne RL. 1985. Sex pheromone in *Polistes fuscatus* (Hymenoptera: Vespidae): effect of age, cast and mating. *Insectes Sociaux* 32: 70-77.
- Prezoto F. 2003. Uso da informação comunitária na fundação de colônias de vespas sociais. In: *Anais do XXI Encontro Anual de Etologia*. Uberlândia: SBET. 21: 1-3.
- Prezoto F. 2001. *Estudos biológicos e etológicos de Polistes (Aphanilopterus) simillimus* Zikan, 1951. Tese de Doutorado, UNESP.
- Prezoto F, Ribeiro Júnior C, Oliveira-Cortes SA, Elisei T. 2007. Manejo de vespas e marimbondos em ambiente urbano. In: Pinto AS, Rossi MM, Salmeron E, editors. *Manejo de Pragas Urbanas*. pp. 123-126. Piracicaba: CP 2.
- Ramos FA, Diniz IR. 1993. Seasonal cycles, survivorship and growth of colonies of *Polistes versicolor* (Hymenoptera, Vespidae) in the urban area of Brasília, Brazil. *The Entomologist* 112(3/4): 191-200.
- Reeve HK. 1991. *Polistes*. In: Ross KG, Mathews RW, editors. *The Social Biology of Wasps*. pp. 99-148. Comstock.
- Richards OW. 1978. *The Social Wasps of the Americas, Excluding the Vespinae*. British Museum. (Natural History)
- Santos GMM, Gobbi N. 1998. Nesting habitats and colonial productivity of *Polistes canadensis canadensis* (L.) (Hymenoptera, Vespidae) in a caatinga area, Bahia state, Brazil. *Journal of Advanced Zoology* 19(2): 63-69.
- Sinzato DMS, Prezoto F. 2000. Aspectos comportamentais de fêmeas dominantes e subordinadas de *Polistes versicolor* Olivier, 1791 (Hymenoptera, Vespidae) em colônias na fase de fundação. *Revista de Etologia* 2(2): 121-127.
- Spradbery JP. 1973. *Wasps: An Account of the Biology and Natural History of Solitary and Social Wasps*. Sidgwick and Jackson.
- Strassmann JE. 1981. Wasp reproduction and kin selection: Reproductive competition and dominance hierarchies among *Polistes annularis* foundresses. *Florida Entomologist* 64(1): 74-88.
- Strassmann JE. 1989. Group colony foundation in *Polistes annularis* (Hymenoptera, Vespidae). *Psyche* 96: 223-236.
- Tannure IC, Nascimento FS. 1999. Influência do conflito de dominância entre fundadoras em colônias de vespas sociais pertencentes ao gênero *Polistes* (Hymenoptera, Vespidae). *Revista Brasileira de Zoociências* 1(1): 31-40.
- Tibbetts EA, Reeve HK. 2003. Benefits of foundress associations in the paper wasp *Polistes dominulus*: Increased productivity and survival, but no assurance of fitness returns. *Behavioral Ecology* 14(4): 510-514.
- Wenzel JW. 1996. Learning, behaviour programs, and higher-level rules in nest construction of *Polistes*. In: Turillazzi S, West-Eberhard MJ, editors. *Natural History and Evolution of Paper-Wasps*. pp. 58-74. Oxford University.
- West-Eberhard MJ. 1969. The social biology of Polistine wasps. *Miscellaneous Publications of the Museum of Zoology* 140:1-101.