



## **Isolation and Characterization of Lipase-Producing Bacteria in the Intestine of the Silkworm, *Bombyx mori*, Reared on Different Forage**

Authors: Feng, Wei, Wang, Xiao-Qiang, Zhou, Wei, Liu, Guang-Ying, and Wan, Yong-Ji

Source: Journal of Insect Science, 11(135) : 1-10

Published By: Entomological Society of America

URL: <https://doi.org/10.1673/031.011.13501>

---

BioOne Complete ([complete.BioOne.org](https://complete.BioOne.org)) is a full-text database of 200 subscribed and open-access titles in the biological, ecological, and environmental sciences published by nonprofit societies, associations, museums, institutions, and presses.

Your use of this PDF, the BioOne Complete website, and all posted and associated content indicates your acceptance of BioOne's Terms of Use, available at [www.bioone.org/terms-of-use](http://www.bioone.org/terms-of-use).

Usage of BioOne Complete content is strictly limited to personal, educational, and non - commercial use. Commercial inquiries or rights and permissions requests should be directed to the individual publisher as copyright holder.

---

BioOne sees sustainable scholarly publishing as an inherently collaborative enterprise connecting authors, nonprofit publishers, academic institutions, research libraries, and research funders in the common goal of maximizing access to critical research.



## Isolation and characterization of lipase-producing bacteria in the intestine of the silkworm, *Bombyx mori*, reared on different forage

Wei Feng<sup>a</sup>, Xiao-Qiang Wang<sup>b</sup>, Wei Zhou<sup>c</sup>, Guang-Ying Liu<sup>d</sup>, and Yong-Ji Wan<sup>e\*</sup>

Laboratory of Invertebrate Pathology and Applied Microbiology, College of Biotechnology, Southwest University, Chongqing 400716, China

### Abstract

The silkworm, *Bombyx mori* L. (Lepidoptera: Bombycidae), an oligophagous insect that mainly feeds on mulberry leaves, is susceptible to entomopathogen infection when reared with tricuspid cudrania leaves. A total of 56 dominant bacterial strains, classified into 12 phlotypes based on bacteriological properties and analysis of 16S rRNA genes, were isolated from the intestine of the fourth and fifth instar silkworm larvae. Ten and seven phlotypes exist in the intestine of the silkworm larvae reared with mulberry leaves and tricuspid cudrania leaves, respectively. Four of them are common in the intestine of the two treatment groups. By screening their lipolytic ability on a Rhodamine B agar plate, nine lipase-producing bacterial strains were obtained and classified into six genera, including *Bacillus*, *Brevibacterium*, *Corynebacterium*, *Staphylococcus*, *Klebsiella*, and *Stenotrophomonas*. Except for *Stenotrophomonas*, which is common in both, the other genera only exist in the intestine of the silkworm larvae fed with mulberry leaves. In addition, by culture and fermentation *in vitro*, the maximum cell density and lipase activity of lipase-producing bacteria were examined at about 48 hours. The results indicate that diet has a significant impact on the gut bacterial community, especially lipase-producing bacteria. We suggest that the difference of lipase-producing bacterial diversity might be related to disease resistance of the silkworm.

**Keywords:** Lepidoptera, dominant bacterium, lipase activity, diversity, mulberry leaf, tricuspid cudrania leaf

**Abbreviations:** BmNPV, *Bombyx mori* nucleopolyhedrovirus

**Correspondence:** <sup>a</sup> [fengwei.sky@163.com](mailto:fengwei.sky@163.com), <sup>b</sup> [xqiangwang@yeah.net](mailto:xqiangwang@yeah.net), <sup>c</sup> [zorroice@yeah.net](mailto:zorroice@yeah.net),

<sup>d</sup> [liuguangying\\_hy@163.com](mailto:liuguangying_hy@163.com), <sup>e</sup> [canbl3312@126.com](mailto:canbl3312@126.com), \*Corresponding author

**Editor:** Steve Lapointe was Editor of this paper.

**Received:** 16 November 2010, **Accepted:** 2 May 2011

**Copyright :** This is an open access paper. We use the Creative Commons Attribution 3.0 license that permits unrestricted use, provided that the paper is properly attributed.

**ISSN:** 1536-2442 | Vol. 11, Number 135

**Cite this paper as:**

Feng W, Wang X-Q, Zhou W, Liu G-Y, Wan Y-J. 2011. Isolation and characterization of lipase-producing bacteria in the intestine of the silkworm, *Bombyx mori*, reared on different forage. *Journal of Insect Science* 11:135 available online: [insectscience.org/11.135](http://insectscience.org/11.135)

## Introduction

Insect guts harbor an abundance of microorganisms, which play important roles in the host's nutrition, development, resistance to pathogens, and reproduction (Brand et al. 1975; Brune 2003; Moran et al. 2005). Loss of microorganisms often results in abnormal development and reduces survival of the insect host (Eutick et al. 1978; Fukatsu and Hosokawa 2002). Compared to mammals, there is a lack of literature regarding the functions of microorganisms in insect guts. Several species, such as termites and desert locusts, are the only insects whose gut microorganisms have been extensively studied (Dillon and Charnley 2002; Ohkuma 2003; Hongoh et al. 2005). Some specific roles of microorganisms in these insect guts have been disclosed, including lignocellulose digestion, methanogenesis, acetogenesis from H<sub>2</sub> and CO<sub>2</sub>, nitrogen fixation, maintenance of a low redox potential, and prevention of entry of foreign microorganisms (Veivers et al. 1982; Charnley et al. 1985; Ohkuma et al. 1996; Leadbetter et al. 1999; Wenzel et al. 2002; Dillon et al. 2005; König 2006; Watanabe et al. 2006; Kudo 2009). However, relatively few studies have shown that Lepidoptera harbor gut bacteria. Similarly, few discuss the possibility that microorganisms may produce some of the digestive enzymes to provide essential nutrients or assist in important biochemical function related to host food ingestion (McKillip et al. 1997; Broderick et al. 2004; Xiang et al. 2006; Gao et al. 2007; Anand et al. 2010).

The silkworm, *Bombyx mori* L. (Lepidoptera: Bombycidae), as a model for Lepidoptera, is an agriculturally important insect for silk production. It mainly feeds on mulberry leaves, although tricuspid cudrania leaves can

also act as the forage of the larvae (Li 1987). Recent studies have found that the silkworm larvae not only show retarded grow, but also are susceptible to *Bombyx mori* nucleopolyhedrovirus (BmNPV) when reared with tricuspid cudrania leaves. Compared with the mulberry leaves treatment group, the lethal dose 50 (LD<sub>50</sub>) of BmNPV ( $1.632 \times 10^5$  PID/larva) is about one fourth in the tricuspid cudrania leaves group (Xue et al. 2009; Xie et al. 2009). In 2003, a study indicated the lipase isolated from silkworm larval alimentary canal shows strong antiviral activity against BmNPV, providing evidence that digestive juice may play an important role during peroral infection with BmNPV (Ponnuvel et al. 2003). Therefore, to explore the differences of intestinal bacteria between the BmNPV susceptible and non-susceptible silkworm, we used tricuspid cudrania leaves to feed silkworms in order to construct a BmNPV susceptible model. Furthermore, we investigated the dominant intestinal bacteria, namely the lipase-producing bacteria, and analyzed diversities and differences. This understanding of the diet-derived intestinal bacterial community may yield insight into relationships between gut bacteria and disease resistance of the silkworm.

## Materials and Methods

### Sample collection

Silkworm eggs were incubated using conventional methods. The silkworm larvae were reared with mulberry leaves from first to third instar, and then were divided into two identical groups; one reared with mulberry leaves, the other with tricuspid cudrania leaves, both at the start of the fourth instar. Twenty silkworm larvae of each treatment group were obtained every other day, from the first day of fourth instar to the seventh day of

fifth instar, and subjected to starvation for 24 hours. Subsequently, the larvae were surface sterilized by submersion into 75% ethanol for one minute and rinsed three times using sterile distilled water prior to dissection. The larvae were dissected using dissection scissors and the guts were withdrawn with sterilized fine-tipped forceps. The intestinal juice of each five larvae was collected using sterile syringes and placed in a 5 mL sterilized centrifuge tube as one unit of collection for processing.

### Isolation of dominant bacteria

At the maximum dilution of intestinal juice, any bacterial colony that accounted for more than 10% the total colony was defined as a dominant microflora. Each sample collected could possess two or more types of dominant bacteria (Li 1999). According to the screening standard of dominant bacteria, 1 mL intestinal juice was added to 9 mL sterilized physiological saline, and tenfold serial dilution aliquots were used for the inoculation. On each agar plate, 0.1 mL of intestinal juice with maximum dilution was spread and incubated at 30 °C for 48-72 hours; all samples were repeated three times. The media used for the isolation of dominant bacteria included nutrient agar, potato dextrose agar, Gause's No. 1 agar, and Czaper's agar medium, which were autoclaved at 121 °C for 20 minutes, and pH value was adjusted to 9.2-9.8 (Huang 1999). Dominant colonies were picked out, purified three times by inoculating on the corresponding agar plates, and further transferred to agar slants.

### Identification of dominant bacteria

The dominant intestinal bacteria were identified by bacteriological properties and 16S rRNA gene sequencing. Morphological tests were done by standard procedures. The physiological-biochemical characteristics were determined on the basis of Gram stain,

spore stain, oxidase test, catalase test, motility, Voges-Proskauer test, methyl red test, indole test, glucose fermentation test, hydrogen sulfide production, and hydrolysis of starch test (Dong and Cai 2001).

DNA was extracted by boiling bacterial cell suspension in sterile distilled water (Brousseau et al. 1993). 16S rRNA genes were amplified with universal primers of 27F (5'-GAGTTTGATCCTGGCTCAG-3') and 1492R (5'-CGGTTACCTTGTTACGACTT-3'). PCR amplification was performed in a total volume of 50 µL containing 5 µL DNA extract, 2 µL of 10 µmol/L of each primer, 4 µL of 5 mmol/L dNTPs, 4 µL of 25 mmol/L MgCl<sub>2</sub>, 5 µL of 10 × PCR buffer, and 0.3 µL of 5 U/µL Taq DNA polymerase using a thermal cycler. Cycling conditions were as follows: initial denaturation at 95 °C for five min, 29 cycles of 94 °C for one min, 55 °C for one min, 72 °C for one min, and a final extension at 72 °C for five min. PCR products were examined by electrophoresis in a 0.8% agarose gel, and bands were visualized by staining with ethidium bromide. PCR products were further purified with the QIAquick PCR purification kit (Quiagen, [www.qiagen.com](http://www.qiagen.com)) and cloned into pMD18-T vector followed by sequencing. Sequence analysis was performed using the BLAST algorithm in GenBank (<http://www.ncbi.nlm.nih.gov>). Bacterial identifications were based on 16S rRNA gene sequence similarity. A phylogenetic tree was constructed with the neighbor-joining method (Saitou and Nei 1987) of MEGA 4.0 software using bootstrap values with 1000 replicates.

### Screening of lipase-producing bacteria

Each dominant isolate was inoculated on Rhodamine B agar plate medium (0.5% beef extract, 0.5% peptone, 0.5% (NH<sub>4</sub>)<sub>2</sub>SO<sub>4</sub>, 0.05% MgSO<sub>4</sub>, 0.4% K<sub>2</sub>HPO<sub>4</sub>, 0.02% CaCl<sub>2</sub>, 0.2% NaNO<sub>3</sub>, 12.0% olive oil emulsion, 2.0%

Rhodamine B (0.1mg/mL), 1.8% agar, pH = 9.2-9.8) using a sterilized toothpick, and incubated at 30 °C for 48 hours. Lipase production was observed as a pink zone of hydrolysis around bacterial colony.

### Growth curve assay of lipase-producing bacteria

Each lipase-producing strain was inoculated in a 250 mL Erlenmeyer flask containing 25 mL of medium, consisting of 0.5% beef extract, 0.5% peptone, 0.5% sucrose, 0.3% NaCl, 0.2% K<sub>2</sub>HPO<sub>4</sub>, pH = 9.2-9.8, and incubated at 30 °C for 24 hours on a rotary shaker at 200 rpm. Subsequently, the inocula were transferred into production medium (2.0% peptone, 0.5% sucrose, 0.1% (NH<sub>4</sub>)<sub>2</sub>SO<sub>4</sub>, 0.1% MgSO<sub>4</sub>, 0.2% K<sub>2</sub>HPO<sub>4</sub>, 1.0% olive oil, pH = 9.2-9.8) at a rate of 2.0%, followed by incubation at 30 °C on a rotary shaker at 200 rpm. The samples were taken after every 12 hours until 72 hours. Cell density was measured by taking the optical density at 600 nm against the cell-free control.

### Assay of lipase activity

The production media were inoculated with

2.0% of seed cultures and incubated at 30 °C for 48 hours on a rotary shaker at 200 rpm. The cultures were centrifuged at 10,000 rpm for 10 min, and the supernatant was examined for lipase activity using an ultrasensitive lipase detection kit (Nanjing Jiancheng Bioengineering Institute, [www.njjcbio.com/html\\_en/contact\\_us.php](http://www.njjcbio.com/html_en/contact_us.php)) by taking the optical density at 420 nm. One unit of lipase activity was defined as the amount of enzyme required for the consumption of 1 μmol substrate per minute under the standard assay condition.

## Results

### Isolation of dominant bacteria

Using the isolation procedure described above, a total of 56 dominant isolates were successfully collected from the intestine of the fourth and fifth instar silkworm larvae and classified into 12 phenotypes based on the colony color, size, and cellular morphology. Typical strains SW83, SW48, SW42, SW115, SW54, SW81, SW56, SW101, SW82, SW75, SW38, and SW41 represented the 12 phenotypes, respectively. Ten and seven

**Table 1.** Morphological characteristics of dominant bacteria in the intestine of the silkworm larvae reared with mulberry leaves and tricuspid cudrania leaves.

Typical Strain	Colonial morphology	Cellular characteristics
SW83	Yellow, raised, regular edge	Rod shaped
SW48	Yellowish, creamy, raised, regular edge	Rod shaped
SW42	Yellow, small, regular edge	Rod shaped, rounded ends
SW115	White, small, regular edge	Rod shaped
SW54	Orange yellow, small and raised, regular edge	Short rod-shaped
SW81	White, creamy, small and raised, irregular edge	Straight rod-shaped
SW56	Yellow, small and raised, regular edge	Straight or subaduncate rod-shaped
SW101	White, raised, regular edge	Rod shaped
SW82	Yellow, small and raised, acicular edge	Rod shaped
SW75	Yellowish, regular edge	Rod shaped
SW38	Yellow, small and raised, irregular edge	Round
SW41	White, big and flat, superficial fold, regular edge	Straight rod-shaped

\*Strains SW83 and SW48 represent special types of dominant intestinal bacteria in the silkworm larvae reared with tricuspid cudrania leaves; strains SW42, SW115, SW54, SW81, and SW56 represent a special type of dominant bacteria in the intestine of the silkworm fed with mulberry leaves; strains SW101, SW82, SW75, and SW38 represent the common types of dominant bacteria in the intestine of the larvae reared on the two kinds of forage; strain SW41 represents the common dominant bacterial type that only exists in the intestine of the fourth-instar silkworm fed on different diets.

**Table 2.** Physiological and biochemical characteristics of dominant bacteria in the silkworm intestine.

Characteristics	SW83	SW48	SW42	SW115	SW54	SW81	SW56	SW101	SW82	SW75	SW38	SW41
Gram stain	-	-	-	-	+	-	+	-	-	-	+	+
Spore stain	-	-	-	-	-	-	-	-	-	-	-	+
Oxidase	+	+	+	-	+	-	-	+	-	-	+	-
Catalase	+	+	+	+	+	+	+	+	+	+	+	+
Motility	+	+	+	+	-	-	-	+	+	+	-	+
Voges-Prokauer	-	-	-	+	-	+	-	-	-	+	-	+
Methyl red	+	+	+	+	-	-	-	+	-	-	+	-
Indole production	-	+	+	-	-	+	-	-	-	-	-	-
Glucose fermentation	-	-	+	±	-	±	+	-	-	±	+	+
Hydrogen sulfide production	-	+	+	+	+	-	-	+	+	-	-	+
Hydrolysis of starch	-	-	+	-	-	+	+	-	-	-	+	+

\* (+) Positive/Fermented glucose produce acid but not gas; (-) Negative/Not ferment glucose; (±) Fermented glucose produce acid and gas.

phenotypes existed in the intestine of the larvae fed with mulberry leaves and tricuspid cudrania leaves, respectively; four of them were common in the intestine of both treatment groups (Table 1).

### Identification of dominant bacteria

Based on morphological and physiological-biochemical characteristics (Tables 1, 2), strains SW82 and SW83 were similar to Pseudomonadaceae, strains SW75, SW81, and SW115 were similar to Enterobacteriaceae, and strains SW48, SW42, SW54, SW56, SW101, SW38, and SW41 were similar to Rhizobiaceae, Vibrionaceae, Brevibacteriaceae, Corynebacteriaceae, Caulobacteraceae, Micrococcaceae, and Bacillaceae, respectively (Buchanan and Gibbons 1984).

To further characterize the dominant intestinal bacteria, strain identification was performed using a molecular approach. The results showed that the 16S rRNA genes of all these isolates had ~ 1500 bp DNA fragments by PCR amplification. All the sequences were deposited in the GenBank database. Accession numbers HM584787 to HM584790 corresponded to strains SW83, SW48, SW42,

and SW115, accession numbers HM584792 to HM584798 corresponded to strains SW101, SW75, SW38, SW54, SW81, SW82, and SW41, and accession number HQ202802 corresponded to strain SW56. To clarify the phylogenetic position of these dominant bacteria, a phylogenetic tree was constructed based on 16S rRNA gene sequence homology (Figure 1). The results showed strains SW83, SW48, SW42, SW54, SW56, SW101, SW82, SW38, and SW41 had the highest homology with *Pseudomonas*, *Agrobacterium*, *Aeromonas*, *Brevibacterium*, *Corynebacterium*, *Brevundimonas*, *Stenotrophomonas*, *Staphylococcus*, and *Bacillus*, respectively. Strains SW115, SW81, and SW75 showed the highest homology with *Klebsiella*. However, together with the morphological and physiological-biochemical characteristics, strains SW115, SW81, and SW75 belonged to *Citrobacter*, *Klebsiella*, and *Enterobacter*, respectively.

### Screening of lipase-producing bacteria

According to screening the isolates on Rhodamine B agar plate, nine lipase-producing bacteria were obtained and named as SW41, SW54, SW56, SW72, SW79, SW80, SW81, SW84, and SW82, respectively



(Figure 2). Except for strain SW82, which was common in both, the other bacteria only existed in the intestine of the silkworm larvae reared with mulberry leaves.

As identified above, strains SW41, SW54, SW56, SW81, and SW82 were *Bacillus*, *Brevibacterium*, *Corynebacterium*, *Klebsiella*, and *Stenotrophomonas*, respectively. 16S rRNA gene sequencing further identified the other lipase-producing bacteria. Strains SW72, SW79, and SW80 (accession numbers HQ202803 to HQ202805) showed the highest similarity to *Staphylococcus*, and strain SW84 with accession number HQ202806 showed the highest similarity to *Brevibacterium* (Figure 1).

#### **Growth curve assay of lipase-producing bacteria**

The bacterial density was examined after every 12 hours until 72 hours; the maximum cell density of all the lipase-producing bacteria was observed at ~ 48 hours of fermentation. After that, the bacterial density reduced, probably due to the consumption of nutrients. The maximum bacterial density showed a significant difference; strain SW41 had the maximum yield, whereas strain SW72 had the minimum yield (Figure 3).

#### **Assay of lipase activity**

Lipase activity was determined using a SmartSpec™3000 UV spectrophotometer (Bio-Rad, [www.bio-rad.com](http://www.bio-rad.com)). Results showed the maximum total lipase activity after 48 hours of fermentation *in vitro*. At their maximum bacterial density, strain SW41 showed the highest lipase activity (249.59 U/L), while strain SW54 showed the lowest activity (77.46 U/L) (Figure 4).

## **Discussion**

This study showed that four phylotypes of the isolated dominant bacteria are common in the intestine of both the silkworm larvae fed on different forage, including *Brevundimonas*, *Stenotrophomonas*, *Enterobacter*, and *Staphylococcus*. There are five phylotypes including *Aeromonas*, *Citrobacter*, *Brevibacterium*, *Klebsiella* and *Corynebacterium*, which only exist in the intestine of the larvae reared with mulberry leaves, while the larvae fed with tricuspid cudrania leaves possess two different genera, *Pseudomonas* and *Agrobacterium*. Based on the isolated dominant strains, nine lipase-producing bacteria were obtained and classified into six genera including *Bacillus*, *Brevibacterium*, *Corynebacterium*, *Staphylococcus*, *Klebsiella*, and *Stenotrophomonas*. The common bacterium belongs to genus *Stenotrophomonas*, and the other bacteria only exist in the intestine of the silkworm larvae reared with mulberry leaves. The diversity of lipase-producing bacteria from the intestine of the silkworm feeding on tricuspid cudrania leaves was considerably deficient compared with that of the larvae reared with mulberry leaves. This difference may relate to the different content of lipids. Additionally, tricuspid cudrania leaves contain fewer sterols than that of mulberry leaves; sterols are indispensable in growth and development of the silkworm larvae (Xue 2009). The lipase-producing bacterial community likely shows great changes in response to the food source. These results provide evidence that diet has a significant impact on gut microbial community. This appears to the case in other lepidopteran caterpillars such as the gypsy moth, with 15 phylotypes at its most complex and 7 phylotypes at its simplest (Broderick et al. 2004). Diet is also known to influence the

intestinal microorganism community in cockroaches and crickets, where microbial populations fluctuate in response to dietary changes (Kane and Breznak 1991; Santo Domingo et al. 1998).

Based on microecology theory, insects lack a complete enzyme system and thus need gut microorganisms to provide different kinds of enzymes for food digestion, nutrient absorption, and biological metabolism (Wei 1985). In this study, the pH value of the media for lipase-producing bacteria was nearly 10.0, which is similar to the gut pH of the silkworm. It suggested that the isolates were able to produce lipase in a similar gut environment. This suggests that not all gut lipase is secreted by the silkworm cells; a recent study reported that a part of velvetbean caterpillar gut protease was secreted by their gut bacteria (Visôto et al. 2009). Although the maximum bacterial density and lipase activity were examined at ~ 48 hours *in vitro*, the properties of these bacteria still need to be studied *in vivo*. However, the understanding of microecology in BmNPV susceptible and non-susceptible silkworms is the basis of disclosing the relationship between intestinal bacteria and BmNPV infection. This study suggests that lipase secreted by gut bacteria might be related to BmNPV resistance in the silkworm.

### Acknowledgements

This work was supported by National Modern Agriculture and Technology System Foundation of China (NO. nycytx-27-gw203).

### References

Anand AAP, Vennison SJ, Sankar SG, Prabhu DIG, Vasani PT, Raghuraman T, Geoffrey CJ, Vendan SE. 2010. Isolation and

characterization of bacteria from the gut of *Bombyx mori* that degrade cellulose, xylan, pectin and starch and their impact on digestion. *Journal of Insect Science* 10:107. Available online, <http://insectscience.org/10.107>

Brand JM, Bracke JW, Markovetz AJ, Wood DL, Browne LE. 1975. Production of verbenol pheromone by a bacterium isolated from bark beetles. *Nature* 254: 136-137.

Broderick NA, Raffa KF, Goodman RM, Handelsman J. 2004. Census of the bacterial community of the gypsy moth larval midgut by using culturing and culture-independent methods. *Applied and Environmental Microbiology* 70(1): 293-300.

Brousseau R, Saint-Onge A, Préfontaine G, Masson L, Cabana J. 1993. Arbitrary primer polymerase chain reaction, a powerful method to identify *Bacillus thuringiensis* serovars and strains. *Applied and Environmental Microbiology* 59(1): 114-119.

Brune A. 2003. Symbionts aiding digestion. In: Resh VH, Cardé RT, Editors. *Encyclopedia of Insects*. pp. 1102-1107. Academic Press.

Buchanan RE, Gibbons NE. 1984. *Bergey's manual of determinative bacteriology*, 8th edition. Science Press.

Charnley AK, Hunt J, Dillon RJ. 1985. The germ-free culture of desert locusts, *Schistocerca gregaria*. *Journal of Insect Physiology* 31(6): 477-485.

Dillon R, Charnley K. 2002. Mutualism between the desert locust *Schistocerca gregaria* and its gut microbiota. *Research in Microbiology* 153: 503-509.



Dillon RJ, Vennard CT, Buckling A, Charnley AK. 2005. Diversity of locust gut bacteria protects against pathogen invasion. *Ecology Letters* 8: 1291-1298.

Dong XZ, Cai MY. 2001. *Common manual of systemic bacteriology*. pp. 353-373. Science Press.

Eutick ML, O'Brien RW, Slaytor M. 1978. Bacteria from the gut of Australian termites. *Applied and Environmental Microbiology* 35(5): 823-828.

Fukatsu T, Hosokawa T. 2002. Capsule-transmitted gut symbiotic bacterium of the Japanese common plataspid stinkbug, *Megacopta punctatissima*. *Applied and Environmental Microbiology* 68(1): 389-396.

Gao HJ, Lu GB, Cha CY, Liu JR, Mu ZM. 2007. Isolation and screening of the enzyme-producing bacteria in the intestine of silkworm. *Acta Sericologica Sinica* 33(2): 228-233.

Hongoh Y, Deevong P, Inoue T, Moriya S, Trakulnaleamsai S, Ohkuma M, Vongkaluang C, Noparatnaraporn N, Kudo T. 2005. Intra- and interspecific comparisons of bacterial diversity and community structure support coevolution of gut microbiota and termite host. *Applied and Environmental Microbiology* 71(11): 6590-6599.

Huang XL. 1999. *Guidance of microbiology experiment*. pp. 114-116. China Higher Education Press.

Kane MD, Breznak JA. 1991. Effect of host diet on production of organic acids and methane by cockroach gut bacteria. *Applied*

*and Environmental Microbiology* 57(9): 2628-2634.

König H. 2006. *Bacillus* species in the intestine of termites and other soil invertebrates. *Journal of Applied Microbiology* 101: 620-627.

Kudo T. 2009. Termite-microbe symbiotic system and its efficient degradation of lignocellulose. *Bioscience, Biotechnology, and Biochemistry* 73(12): 2561-2567.

Leadbetter JR, Schmidt TM, Graber JR, Breznak JA. 1999. Acetogenesis from H<sub>2</sub> plus CO<sub>2</sub> by spirochetes from termite guts. *Science* 283(5402): 686-689.

Li R. 1987. *Silkworm Ecology*. pp. 97-110. Jiangsu Science and Technology Press.

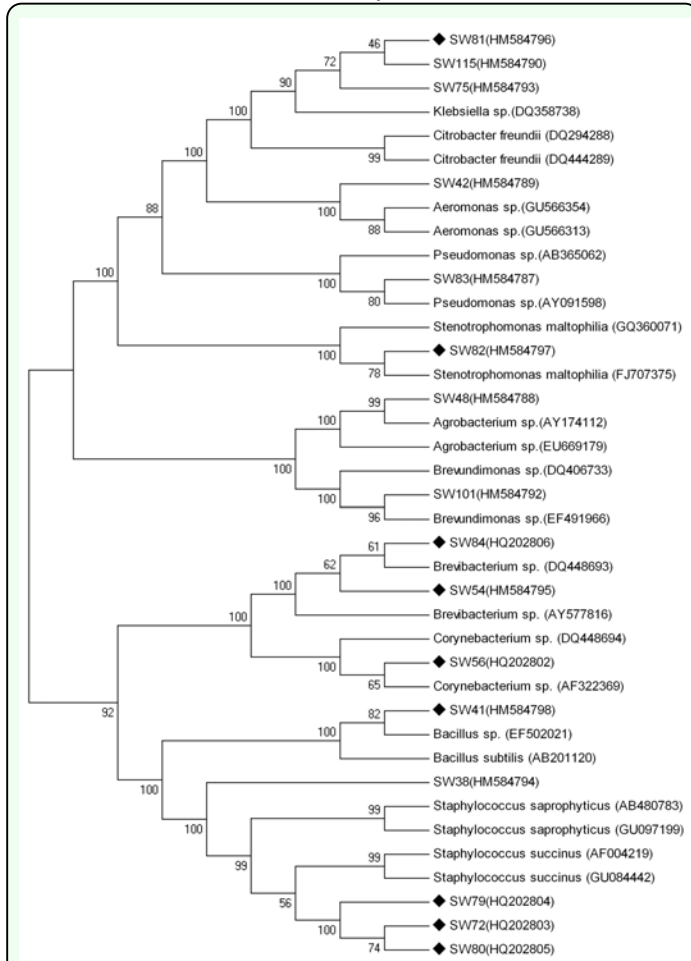
Li WJ. 1999. Establishment of the separation methods and preliminary application of aerobic dominant microflora in intestinal tract. *Chinese Journal of Microecology* 11(5): 315-316.

McKillip JL, Small CL, Brown JL, Brunner JF, Spence KD. 1997. Sporogenous midgut bacteria of the leafroller, *Pandemis pyrusana* (Lepidoptera: Tortricidae). *Environmental Entomology* 26(6): 1475-1481.

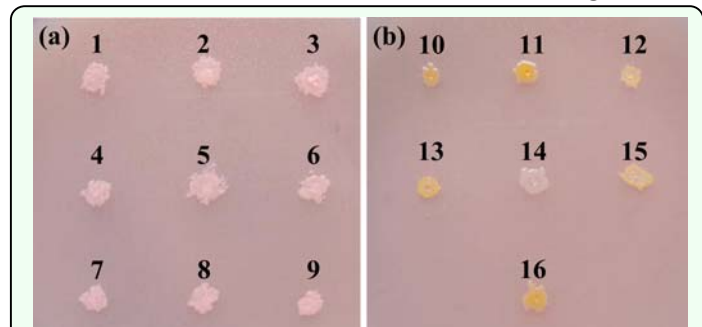
Moran NA, Russell JA, Koga R, Fukatsu T. 2005. Evolutionary relationships of three new species of *Enterobacteriaceae* living as symbionts of aphids and other insects. *Applied and Environmental Microbiology* 71(6): 3302-3310.

Ohkuma M. 2003. Termite symbiotic systems: efficient bio-recycling of lignocellulose. *Applied Microbiology and Biotechnology* 61: 1-9.

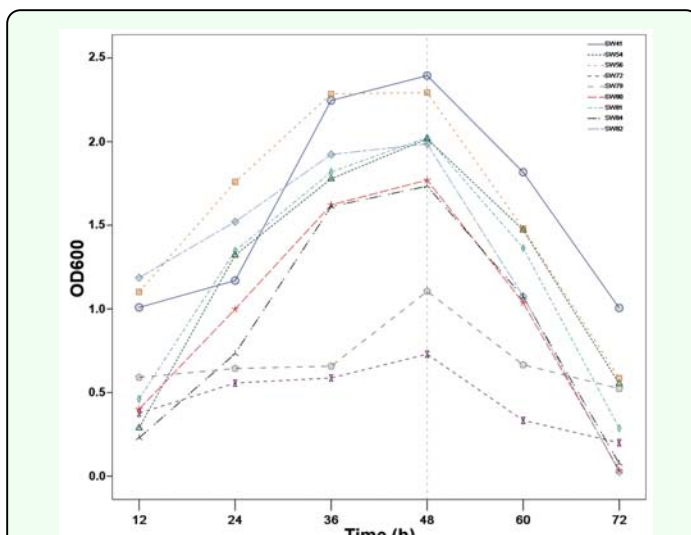
- Ohkuma M, Noda S, Usami R, Horikoshi K, Kudo T. 1996. Diversity of nitrogen fixation genes in the symbiotic intestinal microflora of the termite *Reticulitermes speratus*. *Applied and Environmental Microbiology* 62(8): 2747-2752.
- Ponnuvel KM, Nakazawa H, Furukawa S, Asaoka A, Ishibashi J, Tanaka H, Yamakawa M. 2003. A lipase isolated from the silkworm *Bombyx mori* shows antiviral activity against Nucleopolyhedrovirus. *Journal of Virology* 77(19): 10725-10729.
- Saitou N, Nei M. 1987. The neighbour-joining method: a new method for reconstruction of phylogenetic trees. *Molecular Biology and Evolution* 4: 406-425.
- Santo Domingo JW, Kaufman MG, Klug MJ, Holben WE, Harris D, Tiedje M. 1998. Influence of diet on the structure and function of the bacterial hindgut community of crickets. *Molecular Ecology* 7: 761-767.
- Veivers PC, O'Brien RW, Slaytor M. 1982. Role of bacteria in maintaining the redox potential in the hindgut of termites and preventing entry of foreign bacteria. *Journal of Insect Physiology* 28(11): 947-951.
- Visôto LE, Oliveira MG, Ribon AO, Mares-Guia TR, Guedes RN. 2009. Characterization and identification of proteolytic bacteria from the gut of the velvetbean caterpillar (Lepidoptera: Noctuidae). *Environmental Entomology* 38(4): 1078-1085.
- Watanabe H, Takase A, Tokuda G, Yamada A, Lo N. 2006. Symbiotic "Archaezoa" of the primitive termite *Mastotermes darwiniensis* still play a role in cellulase production. *Eukaryotic Cell* 5(9): 1571-1576.
- Wei X. 1985. *Normal flora and health*. Shanghai Science Press.
- Wenzel M, Schönig I, Berchtold M, Kämpfer P, König H. 2002. Aerobic and facultatively anaerobic cellulolytic bacteria from the gut of the termite *Zootermopsis angusticollis*. *Journal of Applied Microbiology* 92: 32-40.
- Xiang H, Wei GF, Jia SH, Huang JH, Miao XX, Zhou ZH, Zhao LP, Huang YP. 2006. Microbial communities in the larval midgut of laboratory and field populations of cotton bollworm (*Helicoverpa armigera*). *Canadian Journal of Microbiology* 52: 1085-1092.
- Xie HX, Tu Z, Wan YJ, Xue YW, Feng LC, Wang XQ. 2009. Effects of different forages on BmNPV resistance and activities of three metabolic enzymes of silkworm (*Bombyx mori* L.). *Acta Sericologica Sinica* 35(3): 642-647.
- Xue YW. 2009. *Influence of feeding the Cudrania triloba, Cudrania tricuspidata (Carr.) Bur. leaves on resistant physiological functions of silkworm, Bombyx mori*. MS thesis, Southwest University, Chongqing, China.
- Xue YW, Tu Z, Wang YJ, Xiang YQ, Xie HX, Feng LC. 2009. Effects of tricuspid cudrania leaves on growth and development and activity of three metabolic enzymes in the silkworm (*Bombyx mori*). *Acta Sericologica Sinica* 35(2): 408-411.



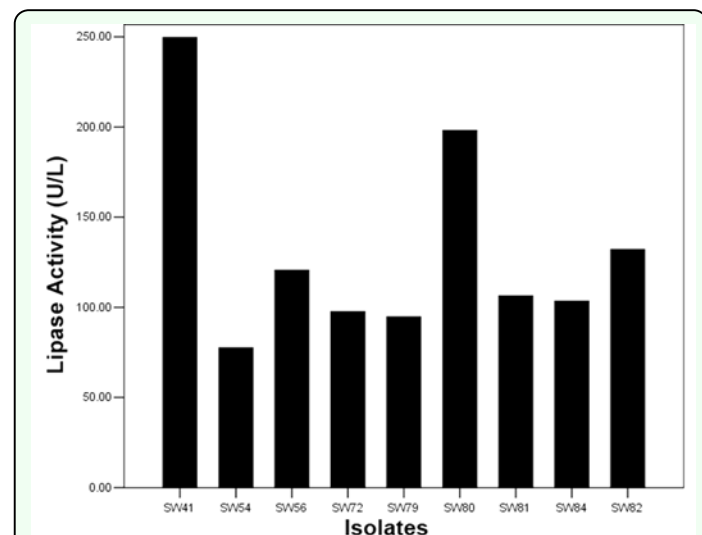
**Figure 1.** Phylogenetic tree of dominant bacteria in the intestine of the silkworm larvae reared with mulberry leaves and tricuspid cudrania leaves. The lipase-producing strains are labeled as black diamond. Number in parentheses represents the sequences accession number in GenBank. The numbers at each branch points indicate the percentage supported by bootstrap analysis based on 1000 resampled data sets. High quality figures are available online.



**Figure 2.** Results of screening the dominant strains on Rhodamine B agar plates. (a) Pink zones 1-9 indicate the hydrolytic zones of lipase-producing strains SW41, SW54, SW56, SW72, SW79, SW80, SW81, SW84, and SW82, respectively. (b) Colonies 10-15 represent bacterial types SW48 (*Agrobacterium*), SW83 (*Pseudomonas*), SW73 (*Bacillus*), SW38 (*Staphylococcus*), SW101 (*Brevundimonas*), and SW75 (*Enterobacter*), which do not producing lipase in the intestine of the silkworm larvae reared with tricuspid cudrania leaves; colony 16 represents bacterial type SW42 (*Aeromonas*) which do not producing lipase in the intestine of the larvae reared with mulberry leaves. High quality figures are available online.



**Figure 3.** Growth curve of lipase-producing bacteria in the intestine of the silkworm larvae reared with mulberry leaves and tricuspid cudrania leaves. High quality figures are available online.



**Figure 4.** Lipase activity of lipase-producing bacteria in the intestine of the silkworm larvae reared with mulberry leaves and tricuspid cudrania leaves. High quality figures are available online.