



Predicting Habitat Distribution of Five Heteropteran Pest Species in Iran

Authors: Solhjoui-Fard, Samaneh, Sarafrazi, Alimorad, Minbashi Moeini, Mehdi, and Ahadiyat, Ali

Source: Journal of Insect Science, 13(116) : 1-16

Published By: Entomological Society of America

URL: <https://doi.org/10.1673/031.013.11601>

BioOne Complete (complete.BioOne.org) is a full-text database of 200 subscribed and open-access titles in the biological, ecological, and environmental sciences published by nonprofit societies, associations, museums, institutions, and presses.

Your use of this PDF, the BioOne Complete website, and all posted and associated content indicates your acceptance of BioOne's Terms of Use, available at www.bioone.org/terms-of-use.

Usage of BioOne Complete content is strictly limited to personal, educational, and non - commercial use. Commercial inquiries or rights and permissions requests should be directed to the individual publisher as copyright holder.

BioOne sees sustainable scholarly publishing as an inherently collaborative enterprise connecting authors, nonprofit publishers, academic institutions, research libraries, and research funders in the common goal of maximizing access to critical research.



Predicting habitat distribution of five heteropteran pest species in Iran

Samaneh Solhjoui-Fard^{1a}, Alimorad Sarafrazi^{2b}, Mehdi Minbashi Moeini^{3c}, and Ali Ahadiyat^{1d}

¹Department of Entomology, Science and Research Branch, Islamic Azad University, Tehran, Iran

²Insect Taxonomy Research Department, Iranian Research Institute of Plant Protection, Evin, Yemen Street, P.O.Box: 19395-1454, Tehran, Iran

³Weed Science Research Department, Iranian Research Institute of Plant Protection, Evin, Yemen Street, P.O.Box, 19395-1454, Tehran, Iran

Abstract

In agroecosystems, potential species distribution models are extensively applied in pest management strategies, revealing species ecological requirements and demonstrating relationships between species distribution and predictive variables. The Maximum Entropy model was used to predict the potential distribution of five heteropteran key pests in Iran, namely *Adelphocoris lineolatus* (Goeze) (Hemiptera: Miridae), *Lygus pratensis* (L.), *Apodiphus amygdali* (Germar) (Hemiptera: Pentatomidae), *Nezara viridula* (L.), and *Nysius cymoides* (Spinola) (Hemiptera: Lygaeidae). A total of 663 samples were collected from different parts of Iran. The altitude and climate variable data were included in the analysis. Based on test and training data, the area under the receiver operating characteristic curve values were above 0.80, the binomial omission test with the lowest presence threshold for all species was statistically significant (< 0.01), and the test omission rates were less than 3%. The suitability of areas in Iran for *A. amygdali* (Germar) (Hemiptera: Pentatomidae), *N. cymoides* (Spinola) (Hemiptera: Lygaeidae), *A. lineolatus* (Goeze) (Hemiptera: Miridae), *L. pratensis* (L.), and *N. viridula* (L.) (Hemiptera: Pentatomidae), ranked as 78.86%, 68.78%, 43.29%, 20%, and 15.16%, respectively. In general, central parts of Iran including salt lakes, deserts, and sand dune areas with very high temperatures and windy weather were predicted to be less suitable, while other regions, mainly northern parts, were most suitable. These new data could be applied practically for the design of integrated pest management and crop development programs.

Abbreviations: AUC, area under receiver operating characteristic curve; MaxEnt, maximum entropy modeling; ROC, receiver operating characteristic

Keywords: *Adelphocoris lineolatus*, *Apodiphus amygdali*, distribution models, habitat suitability, *Lygus pratensis*, MaxEnt, *Nezara viridula*, *Nysius cymoides*

Correspondence: ^a s.solhjoui@gmail.com, ^b asarafrazi@yahoo.com, ^c mehdiminbashi@gmail.com, ^d a.ahadiyat@srbiau.ac.ir

Editor: David Heckel was editor of this paper.

Received: 24 January 2012 **Accepted:** 9 September 2012 **Published:** 26 October 2013

Copyright: This is an open access paper. We use the Creative Commons Attribution 3.0 license that permits unrestricted use, provided that the paper is properly attributed.

ISSN: 1536-2442 | Vol. 13, Number 116

Cite this paper as:

Solhjoui-Fard S, Sarafrazi A, Moeini MM, Ahadiyat A. 2013. Predicting habitat distribution of five heteropteran pest species in Iran. *Journal of Insect Science* 13:116. Available online: www.insectscience.org/13.116

Introduction

About 60% of Heteroptera, with more than 40,000 described species (Weirauch and Schuh 2011), are phytophagous (Schaefer and Panizzi 2001). The key pests are mainly found in three families, namely Miridae, Pentatomidae, and Lygaeidae. The species *Adelphocoris lineolatus* (Goeze) (Miridae), *Lygus pratensis* (L.), *Apodiphus amygdali* (Germar) (Pentatomidae), *Nezara viridula* (L.), and *Nysius cymoides* (Spinola) (Lygaeidae) are of economic importance in Iran because of their outstanding damage to alfalfa (Yasunaga 1990; Wheeler Jr. 2001; Mirab-balou et al. 2008), cotton (Behdad 2002), clover (Wipfli et al. 1990), canola (Heidary Alizadeh et al. 2009; Sarafrazi et al. 2009), pistachio nuts (Mehrnejad 2001), almond, and apple (Ghauri 1977). Despite using chemical and biological control measures against these insect pests, their damage is still outstanding, which could partly be related to the lack of information on some biological aspects and the impact of different climates on their performance.

The modeling established based on environmental variables and occurrence species records helps growers in their pest management strategies. The modeling could be used in management of invasive insect species in new areas (Roura-Pascual et al. 2009; Solhjoui Fard 2011; Wilson et al. 2011), determining the effect of global climate change on pest (Franklin 2009) and their host plant distributions (Ulrichs and Hopper 2008), revealing species ecological requirements relationships between the distribution of species and predictive variables as well as the importance of each variable in model building (Araújo and Guisan 2006).

Many models with different statistical algorithms, such as maximum entropy modeling

(MaxEnt), genetic algorithm for rule-set prediction (GARP), DOMAIN, BIOCLIM, limiting variable and environmental suitability (LIVES), and so on (Elith et al. 2006; Phillips et al. 2006), predict species potential distribution with presence-only data. MaxEnt, as a good choice for presence-only data (Elith and Leathwick 2009), has demonstrated a high predictive accuracy (Elith et al. 2006). This method predicts based on Maximum Entropy (i.e., closest to the uniform) (Phillips et al. 2006). It requires presence-only data, randomly selected background data from the study area as pseudo-absence, and environmental variables to generate predictions (Phillips et al. 2006). It indicates probability of species occurrence in each grid cell of the study region (Stachura-Skierczynska et al. 2009) based on environmental conditions where the species have been observed.

This is the first study on distribution modeling and predicting the geographic distribution of some heteropteran pest species in Iran. It was conducted to complete a part of their zoogeographical information that could be used in a thorough designing of management strategies based mainly on ecological niche modeling.

Materials and Methods

Species records

In order to determine the distribution model of *Ad. lineolatus*, *L. pratensis*, *Ap. amygdali*, *Ne. viridula*, and *Ny. cymoides*, a total of 663 samples, (*Ad. lineolatus* 189, *L. pratensis* 69, *Ap. amygdali* 105, *Ne. viridula* 81, *Ny. cymoides* 219), including those collected from different parts of Iran, records of the species deposited in the Hayk Mirzayans Insect Museum in the Insect Taxonomy Research Department, and species published in related documents (Hoberlandt 1954, 1995; Linnavuri 2007a, 2007b, 2008) (Figure 1) were used

in the niche ecological modeling. The geographical coordinates for some localities were obtained and/or corrected using Google Earth (www.googleearth.com). The data was checked in ArcGIS software (ESRI 2008) for any errors.

Environmental variables

Environmental variables are generally selected based on species ecology (Holway et al. 2002; Roura-Pascual et al. 2009). The variables, including annual mean temperature, mean diurnal range, maximum temperature of warmest month, minimum temperature of coldest month, annual precipitation, and precipitation of the wettest and driest months, were downloaded from the WorldClim dataset (Hijmans et al. 2005). These particular climate dimensions were chosen to represent environmental dimensions relevant to distribution and survival of small arthropods (De Meyer et al. 2010). The selected data were in raster format with 30 arc second (~1 km) spatial resolutions (Hijmans et al. 2005).

Model building and evaluations

Because of its better performance than the other species distribution models (Elith et al. 2006), The MaxEnt software (version 3.3.3e) was utilized for modeling. Models were calibrated using 75% of the available records for each species as training data, and the remaining 25% were used for model validation as test data. The model settings were 10000 randomly selected background points as pseudo-absence in the entire studied area, regularization multiplier 1, and 1000 maximum iteration with 10^{-5} convergence threshold. Logistic output format was used to describe the probability of presence (Phillips and Dudík 2008), which is a continuous habitat suitability range between 0 (unsuitable) and 1 (the most suitable). MaxEnt was run ten times for

each species in order to get average prediction. The outputs in ASCII format were processed and visualized using ArcGIS 9.3[®] (ESRI 2008). The Jackknife analysis was used to indicate the most informative variables.

The accuracy and performance of species distribution models were evaluated using threshold-independent receiver operation characteristic (ROC) analysis (Elith et al. 2006; Phillips et al. 2006) and threshold-dependent binomial test of omission (Phillips et al. 2006). The area under the ROC curve (AUC) ranges between 0 and 1. Models with an AUC value higher than 0.75 are acceptable models (Pearce and Ferrier 2000). In the second test, the lowest presence threshold (Pearson et al. 2007) was selected to represent the areas that were at least as suitable as those where the species has been recorded (Hernandez et al. 2006; Pearson et al. 2007). Omission rates in optimal models are less than 0.05 (Anderson et al. 2003).

Results

According to the continuous average maps (Figures 2 to 6), 43.29% of the studied area, mainly northern parts of Iran, was considered as a suitable habitat for *Ad. lineolatus*. The suitable areas for *L. pratensis* and *Ne. viridula* were also extended to some parts of southern Iran, comprising 20% and 15.16% of the studied area respectively. Most parts of Iran (78.86%), except deserts, were considered as suitable habitats for *Ap. amygdali*. The geographic distribution map predicted *Ny. cymoides* to occur in most of the areas (68.78%), except central and eastern Iran. In general, the central part of Iran was predicted as the least suitable area, and the northern part was predicted as the most suitable.

Table 1. The percent contribution of environmental variables in predicting the species geographic distribution models. For description of each variable, see text.

Environmental variable (Unit)	Variable code	<i>Adelphocoris lineolatus</i>	<i>Lygus pratensis</i>	<i>Apodiphus amygdali</i>	<i>Nezara viridula</i>	<i>Nysius cymoides</i>
Annual Mean Temperature (°C)	bio 1	25.7	4.4	26.8	2.4	5
Mean Diurnal Range (Mean of monthly (max temp - min temp)) (°C)	bio 2	15.9	6.1	6.4	5.8	9.2
Maximum Temperature of Warmest Month (°C)	bio 5	26.8	1.3	12.8	0.6	8.5
Minimum Temperature of Coldest Month (°C)	bio 6	6	8.7	4.6	11	6.6
Annual Precipitation (mm)	bio 12	4.1	16.6	26.8	4	18.4
Precipitation of Wettest Month (mm)	bio13	1.9	0.9	6.2	3.2	13.1
Precipitation of Driest Month (mm)	bio 14	16.4	58.9	3.6	60.8	20
Altitude (m)	elevation	3.2	3.1	12.7	12.3	19.2

The Jackknife test of variable importance showed that maximum temperature of warmest month (26.8%), annual mean temperature (25.7%), precipitation of driest month (16.4%), and mean diurnal range (15.9%) were the most important factors in *Ad. lineolatus* habitat distribution prediction (Table 1). According to the marginal response curves, the probability of occurrence was maximal when maximum temperature of warmest month and annual mean temperature ranged between 25–32° C and 5–20°C respectively. The precipitation of the driest month should also range between 5–35 mm. A negative relationship between probability of occurrence and mean diurnal range was observed (Figure 7).

Among the eight variables, precipitation of driest month (58.9%) and annual precipitation (16.6%) had the highest contribution for *L. pratensis* modeling construction (Table 1). The species occurrence showed an increase when the amount of precipitation during the driest months and annually was less than 20 and 800 mm respectively. The percentage was then decreased with increasing precipitation (Figure 8).

The highest contribution in prediction modeling of *Ap. amygdali* belonged to annual precipitation (26.8%), annual mean temperature (26.8%), maximum temperature of warmest month (12.8%), and altitude (12.7%)

(Table 1). Marginal response curves showed positive relationships between maximum temperature of warmest month and altitude, and a negative association between annual mean temperature and the species occurrence (Figure 9). The highest probabilities of occurrence were in areas with less than 37 mm annual precipitation.

Precipitation of driest month (60.8%), altitude (12.3%), and minimum temperature of coldest month (11%) had the greatest contribution in determining of *Ne. viridula* habitats in Iran (Table 1). The occurrence probability of *Ne. viridula* indicated a positive relationship with precipitation of driest month, while the peak of occurrence was between 0–7° C minimum temperatures of coldest month. Higher altitudes were predicted to be suitable habitats (Figure 10).

For *Ny. cymoides* modeling, the relevant environmental variables were precipitation of driest (20%) and wettest month (13.1%), altitude (19.2%), and annual precipitation (18.4%) (Table 1). A positive relationship was observed between precipitation of driest month, annual precipitation, and precipitation of wettest month and the probability of the species occurrence, but this relationship was negative in terms of altitude (Figure 11).

MaxEnt results generated two ROC curves, displaying AUC values, for each species

Table 2. Statistical evaluation of MaxEnt model using threshold-dependent and threshold-independent evaluations. The *p*-value obtained using the minimum training presence

Species	Training AUC	Test AUC	SD	Test omission rate	<i>p</i> -value	Sample size
<i>Adelphocoris lineolatus</i>	0.92	0.87	0.02	0.008	< 0.001	189
<i>Lygus pratensis</i>	0.96	0.94	0.01	0.02	0	69
<i>Apodiphus amygdali</i>	0.85	0.8	0.03	0.01	< 0.01	105
<i>Nezara viridula</i>	0.94	0.92	0.02	0.01	< 0.01	81
<i>Nysius cymoides</i>	0.88	0.84	0.02	0.01	< 0.001	219

based on training and test data. The AUC values based on training and test data were respectively 0.92 and 0.87 (SD = 0.02) for *Ad. lineolatus*, 0.96 and 0.94 (SD = 0.01) for *L. pratensis*, 0.85 and 0.80 (SD = 0.03) for *Ap. amygdali*, 0.94 and 0.92 (SD = 0.02) for *Ne. viridula*, and 0.88 and 0.84 (SD = 0.02) for *Ny. cymoides* (Table 2). Therefore, the performances of the models were good for predicting habitat suitability in training and test locations. The binomial omission test with the lowest presence threshold for all species was statistically significant, and the test omission rates were very low, not exceeding 2% (Table 2).

Discussion

According to the obtained models, besides the Iran climate classifications (de Pauw et al. 2002), the semi-humid, humid, and post-humid parts of the Irano-Turanian zoogeographical subregion, which has host plants such as alfalfa and clover (Ministry of Agriculture 2010), were identified as suitable areas for *Ad. lineolatus* distribution. The pest is also found in Mediterranean subregions (including many parts of Europe and Mediterranean regions of North Africa) (Kerzhner and Josifov 1999), Siberia, Central Asia, North America, and Canada (Wheeler Jr. 2001; Grichanov and Ovsyannikova 2009), areas with humid and cold to temperate climates. The marginal response curves (Figure 7) showed that the probability of occurrence has a direct relationship with the amount of precipitation. Some small regions within the southern parts of Iran

(Figure 2) and dry areas, except regions with high temperatures (> 30° C) (de Pauw et al. 2002), were moderately to poorly suitable for the pest. Marginal response curves showed a decrease of occurrence probability in higher temperatures. The results implied that *Ad. lineolatus* prefers humid environments with low temperatures, while the altitude does not significantly affect its distribution. The lack of the pest occurrence record in Saharo-Arabian zoogeographical subregion (Konstantinov et al. 2009), including the southern part of Iran, Iraq, Saudi Arabia, and parts of northern Africa (Kerzhner and Josifov 1999), could partly be related to the high temperatures of the localities. Central parts of Iran including salt lakes, deserts, and sand dune areas with high temperatures and windy weather (Bakhtiyari 1998) were unsuitable habitats for the species, probably because of the impact of hot, dry, and windy weather on the insect embryo development (Grichanov and Ovsyannikova 2009).

The most suitable areas for *L. pratensis* (Figure 3) occurred in humid and semi-humid regions of Khouzestan and Fars provinces (Ministry of Agriculture 2010), especially in areas with warm summers (10–30° C), where its host plants, alfalfa and canola, are extensively planted. The distribution model predicted some parts of southern Iran, where no records are available, as suitable areas for the pest. At least two reasons, including the incomplete sampling and/or biotic factors such as interspecific competitions, could be the reason for this prediction. The suitable ar-

areas for *L. pratensis* in Iran, such as the coast of the Caspian Sea (Gilan Province), are mostly similar to those of Mediterranean climate (Badripour 2004) where the species has already been recorded (Kerzhner and Josifov 1999). According to the marginal response curves (Figure 8), a positive relationship between precipitation and species occurrence was observed. More humid (> 20 mm for driest months and > 800 mm for annual precipitation) and post-humid areas were less suitable. Dry regions had low to moderate suitability for the pest. Climate regions such as the central part of Iran, with arid to hyper-arid climates, including salt lakes, deserts, and sand dune areas (Badripour 2004), with high temperature ($> 30^{\circ}\text{C}$) were unsuitable habitats. Humid regions and areas with warm summers ($10\text{--}30^{\circ}\text{C}$) are generally preferred habitats for adults. The marginal response curves showed that the species has mostly been distributed in areas with lower temperatures. *Lygus* bugs are able to tolerate habitats with low temperatures, such as canola growing regions in Canada and Sweden (Otani and Carcamo 2011).

Ap. amygdali is a key pest of pistachio nuts (Mehrnejad 2001), almond, and apple (Ghauri 1977) in Iran. Most parts of the studied areas, except hyper-arid and arid regions (e.g., the central plateau and southeast of Iran, which have coastal dry climates and very warm summers ($> 30^{\circ}\text{C}$)), planted with the above-mentioned plants (Ministry of Agriculture 2010) were predicted as suitable habitats (Figure 4). The pest has been recorded throughout Palaearctic regions (Rider 1999). According to the Jackknife test and marginal response curves (Figure 9), the probability of the species occurrence decreases in areas with very high temperatures, lower precipitations, and lower altitudes. Based on Javahery's (1994) study, low relative humidity ($< 20\%$)

limits development and emergence of several pentatomid species. The pest has been collected from areas with altitudes of 41 to 3500 m a.s.l. (mainly above 1500 m a.s.l.). A report by Ghauri (1977) showed that the *Apodiphus* species were found in lower hills at altitudes up to 1600 m a.s.l. rather than in higher regions of Iran, Turkey, and countries further west. This contradiction could mostly be related to Ghauri having only a few sampling sites.

In terms of *Ne. viridula*, China (1938) stated that the pest could be considered as a cosmopolitan species, except for in the colder regions. The species is spread throughout the Palaearctic region, especially in tropical and subtropical parts (Rider 1999). According to the Iran climate classification (de Pauw et al. 2002) and response curves, semi-arid to humid regions with higher precipitation and lower altitudes (Tougou et al. 2009) are positively associated with *Ne. viridula* (L.) occurrence. The temperature response curves and the results of Clarke and Walter (1993) implied that the species could survive in low temperatures. Furthermore, the increasing of aridity reduces the chance of the species occurrence. Under laboratory conditions, the nymphs move to areas with higher humidity (Hirose et al. 2006). This means that the emergence from eggs and the survival of the nymphs are strongly dependent on high relative humidity. Localities with these kinds of characteristics are mostly found in coastal parts of the Caspian Sea with low altitudes and southern provinces, including Bushehr, Hormozgan, and southern parts of Kerman and Sistan-Baluchestan (Figure 5) as a part of the Saharo-Arabian zoogeographical subregion. The main growing areas for the two main host plants of *Ne. viridula*, cotton and pistachio, are Golestan in the north and the southern

provinces of Iran, respectively (Ministry of Agriculture 2010).

According to the habitat distribution model (Figure 6), *Ny. cymoides* showed mostly the same results as *Ap. amygdali*. The pest has been recorded from most fields, semi-desert areas, and steppic areas of the Palaearctic region (Pericart 1999; Linnavuori 2007b). On the contrary, deserts, salt lakes, sand dune areas (Badripour 2004), and coastal arid regions (e.g., coast of Oman Sea) (Bakhtiyari 1998) are considered as unsuitable habitats. According to Iran climate classifications, the presence records, and the marginal response curves, *Ny. cymoides* prefers humid regions. Regardless of an exceptional record of the pest at an altitude of 2660 m a.s.l., the results of Jackknife test and response curve indicate the negative impact of altitude on the species distribution (Figure 11). This is probably why the insect prefers low lands such as the coast of the Caspian Sea and the Khouzestan plains. The regions are cultivated with its main host plants, such as Canola (Ministry of Agriculture 2010).

In congruence with several already published studies (e.g. Elith et al. 2006; Crawford and Hoagland 2010; Wilson et al. 2011), the MaxEnt showed its high ability to produce prediction distribution models for the species under study.

References to the AUC values, omission of test points, and the significant predictions of the results opened new insights into the ecology and climatic-based distribution of the pests. These outstanding new data could be applied practically in designing integrated pest management and crop development programs.

Acknowledgements

We thank the Hayk Mirzayans Insect Museum for sharing the heteropteran specimens. We also thank the colleagues in Agricultural Centers in different provinces for providing sampling facilities. The work was funded and performed by the Insect Taxonomy Research Department of the Iranian Research Institute of Plant Protection.

References

- Anderson RP, Lew D, Peterson AT. 2003. Evaluating predictive models of species' distributions: criteria for selecting optimal models. *Journal of Ecological Modelling* 162: 211–232.
- Araujo MB, Guisan A. 2006. Five (or so) challenges for species distribution modelling. *Journal of Biogeography* 33: 1677–1688.
- Badripour H. 2004. *Country Pasture/Forage Resource Profiles: Islamic Republic of Iran*. FAO. Available online: <http://www.fao.org/ag/agP/AGPC/doc/Counpr of/Iran/Iran/>
- Bakhtiyari S. 1998. *Complete atlas of Gitashenasi*. Gitashenasi Geographic and Cartography Institute.
- Behdad E. 2002. *Introductory entomology and important plant pests in Iran*. Yadboud Press.
- China WE. 1938. Hemiptera from Iraq, Iran, and Arabia. *Zoogeographical Series of the Field Museum of Natural History* 20: 427–437.
- Clarke AR, Walter GH. 1993. Biological control of green vegetable bug (*Nezara viridula* (L.)) in Eastern Australia: Current

status and perspectives. In: Corey SA, Dall C, Milne DJ, Milne WM, Editors. *Pest Control and Sustainable Agriculture*. pp. 223–225. CSIRO Division of Entomology Press.

Crawford PHC, Hoagland BW. 2010. Using species distribution models to guide conservation at the state level: the endangered American burying beetle (*Nicrophorus americanus*) in Oklahoma. *Insect Conservation* 14: 511–521.

De Meyer M, Robertson MP, Mansell MW, Ekesi S, Tsuruta K, Mwaiko W, Vayssières JF, Peterson AT. 2010. Ecological niche and potential geographic distribution of the invasive fruit fly *Bactrocera invadens* (Diptera, Tephritidae). *Bulletin of Entomological Research* 100: 35–48.

de Pauw ED, Gaffari A, Gasemi V. 2002. *Agro-climatic zone maps of Iran*. Seed and Plant Improvement Research Institute (SPIRI).

Elith J, Graham CH, Anderson RP, Dudík M, Ferrier S, Guisan A, Hijmans RJ, Huettmann F, Leathwick JR, Lehmann A, Li J, Lohmann LG, Loiselle BA, Manion G, Moritz C, Nakamura M, Nakazawa Y, Overton JM, Peterson AT, Phillips SJ, Richardson K, Scachetti-Pereira R, Schapire RE, Soberon J, Williams S, Wisz MS, Zimmermann NE. 2006. Novel methods improve prediction of species' distributions from occurrence data. *Journal of Ecography* 29: 129–151.

Elith J, Leathwick J. 2009. The contribution of species distribution modelling to conservation prioritization. In: Moilanen A, Wilson KA, Possingham HP, Editors. *Spatial conservation prioritization: Quantitative methods & computational tools*. pp. 70–93. Oxford University Press.

Franklin J. 2009. *Mapping species distributions: spatial inference and prediction*. Cambridge University Press.

Ghauri MSK. 1977. A revision of *Apodiphus* Spinola (Heteroptera : Pentatomidae). *Bulletin of Entomological Research* 67: 97–106.

Grichanov IY, Ovsyannikova EI. 2009. *Interactive agricultural ecological atlas of Russia and neighboring countries*. Available online: <http://www.agroatlas.ru/>

Heidary Alizadeh B, Avand-Faghih A, Mohaghegh J, Porsheko AY. 2009. Ethyl 4-isothiocyanatobutyrate as a potential attractant for *Nysius cymoides* (Het.: Lygaeidae). *Journal of Applied Entomology and Phytopathology* 76: 1–10.

Hernandez PA, Graham CH, Master LL, Albert DL. 2006. The effect of sample size and species characteristics on performance of different species distribution modeling methods. *Journal of Ecography* 29: 773–785.

Hijmans RJ, Cameron SE, Parra JL, Jones PG, Jarvis A. 2005. Very high resolution interpolated climate surfaces for global land areas. *International Journal of Climatology* 25: 1965–1978.

Hirose E, Pannizzi AR, Cattelan AJ. 2006. Effect of Relative Humidity on Emergence and on Dispersal and Regrouping of First Instar *Nezara viridula* (L.) (Hemiptera: Pentatomidae). *Journal of Neotropical Entomology* 35: 757–761.

Hoberlandt L. 1954. Hemiptera-Heteroptera from Iran. *Acta Entomologica Musei Nationalis Pragae* 29: 121–148.

- Hoberlandt L. 1995. Results of the Czechoslovak-Iranian entomological expeditions to Iran 1970, 1973 and 1977. *Acta Entomologica Musei Nationalis Pragae* 44: 181–293.
- Holway DA, Suarez AV, Case TJ. 2002. Role of abiotic factors in governing susceptibility to invasion: a test with Argentine ants. *Journal of Ecology* 83: 1610–1619.
- Javahery M. 1994. Development of eggs in some true bugs (Hemiptera-Heteroptera). Part I. Pentatomoidea. *Journal of Canadian Entomologist* 126(2): 401–433.
- Kerzhner IM, Josifov M. 1999. Miridae Hahn, 1833. In: Aukema B, Rieger C, Editors. *Catalogue of the heteroptera of the palaearctic region*, volume 3. The Netherlands Entomological Society Press.
- Konstantinov AS, Korotyaev BA, Volkovitsh MG. 2009. Insect biodiversity in the palearctic region. In: Footitt R, Adler P, Editors. *Insect Biodiversity: Science and Society*. pp. 107–162. Blackwell Publishing.
- Linnavuori RE. 2007a. Studies on the Miridae (Heteroptera) of Gilan and the adjacent provinces in northern Iran. *Acta Entomologica Musei Nationalis Pragae* 47: 17–56.
- Linnavuori RE. 2007b. Studies on the Lygaeidae s. lat. (Heteroptera) of Gilan and the adjacent provinces in northern Iran. *Acta Entomologica Musei Nationalis Pragae* 47: 57–75.
- Linnavuori RE. 2008. Studies on the Acanthosomatidae, Scutelleridae and Pentatomidae (Heteroptera) of Gilan and the adjacent provinces in northern Iran. *Acta Entomologica Musei Nationalis Pragae* 48: 1–21.
- Ministry of Agriculture. 2010. *Area, production and yield of agricultural crops: Agricultural Statistics of Iran 2008-2009*. Deputy of Planning & Economic Affairs Tehran.
- Mirab-balou M, Rasouljan GR, Khanjani M, Sabahi Q. 2008. Study on taxonomy of phytophagous bugs of the family Miridae and introducing insects natural enemies of the alfalfa tarnished plant bug in Hamedan alfalfa farms (west of Iran). *Journal of Pakistan Entomology* 30: 55–60.
- Otani J, Cárcamo H. 2011. Biology and management of *Lygus* in canola. *Prairie Soils & Crops Journal* 4: 42–53.
- Pearce J, Ferrier S. 2000. An evaluation of alternative algorithms for fitting species distribution models using logistic regression. *Journal of Ecological Modelling* 128: 147–127.
- Pearson RG, Raxworthy CJ, Nakamura M, Peterson AT. 2007. Predicting species distributions from small numbers of occurrence records: a test case using cryptic geckos in Madagascar. *Journal of Biogeography* 34: 102–117.
- Pericart J. 1999. Superfamily Lygaeoidea Schilling, 1829. In: Aukema B, Rieger C, Editors. *Catalogue of the heteroptera of the palaearctic region*, volume 4. The Netherlands Entomological Society Press.
- Phillips SJ, Anderson RP, Schapire RE. 2006. Maximum entropy modeling of species geographic distributions. *Journal of Ecological Modelling* 190: 231–256.

Phillips SJ, Dudík M. 2008. Modeling of species distributions with Maxent: new extensions and a comprehensive evaluation. *Journal of Ecography* 31: 161–175.

Phillips SJ, Dudík M, Schapire RE. 2004. A Maximum Entropy Approach to Species Distribution Modeling. In: Brodley CE, Editor. *Machine Learning. Proceedings of the Twenty-first International Conference (ICML 2004), Banff, Alberta, Canada, July 4-8, 2004*.

Rider DA. 1999. Family Pentatomidae Leach, 1815. In: Aukema B, Rieger C, Editors. *Catalogue of the heteroptera of the palaearctic region*, volume 3. The Netherlands Entomological Society Press.

Roura-Pascual N, Brotons L, Peterson AT, Thuiller W. 2009. Consensual predictions of potential distributional areas for invasive species: a case study of Argentine ants in the Iberian Peninsula. *Journal of Biological Invasions* 11: 1017–1031

Sarafrazi A, Shiroudbakhshi R, Zahiri R, Zangeneh A. 2009. *Nysius* species fauna of Iran and their distribution on canola. *The 6th Asia-Pacific Congress of Entomology (APCE 2009), Beijing, China. October 18-22, 2009*.

Schaefer CW, Panizzi AR. 2001. Economic Importance of Heteroptera: A General View. In: Schaefer CW, Panizzi AR, Editors. *Heteroptera of Economic Importance*. pp. 3–8. CRC Press.

Stachura-Skierczynska K, Tumił T, Skierczynski M. 2009. Habitat prediction model for three-toed woodpecker and its implications for the conservation of biologically valuable forests. *Journal of*

Forest Ecology and Management 258: 697–703.

Ulrichs C, Hopper KR. 2008. Predicting insect distributions from climate and habitat data. *Journal of BioControl* 53: 881–894.

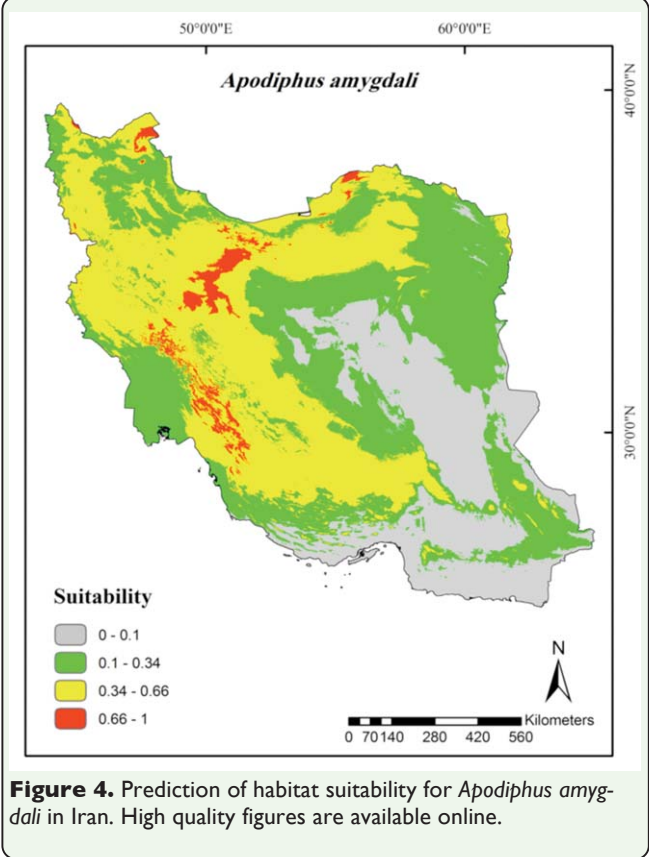
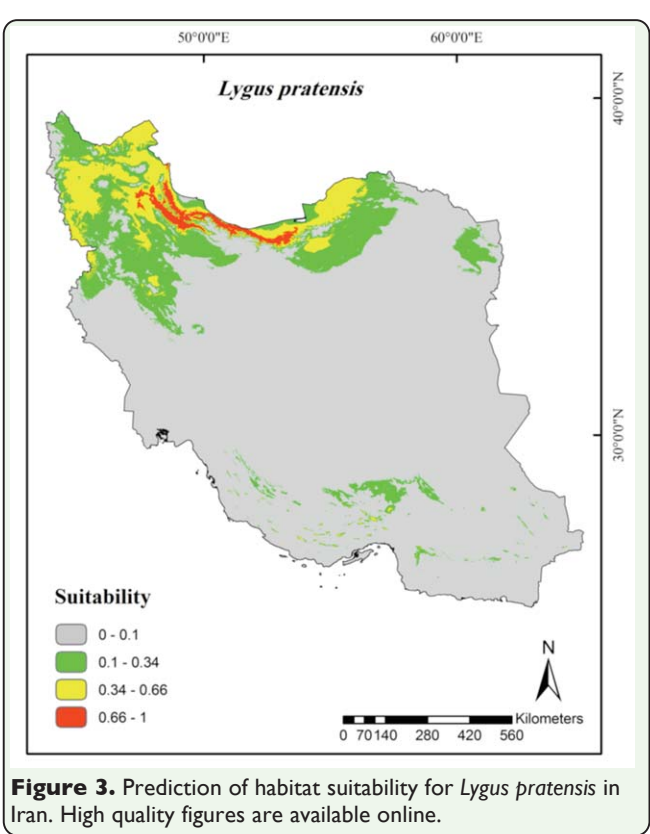
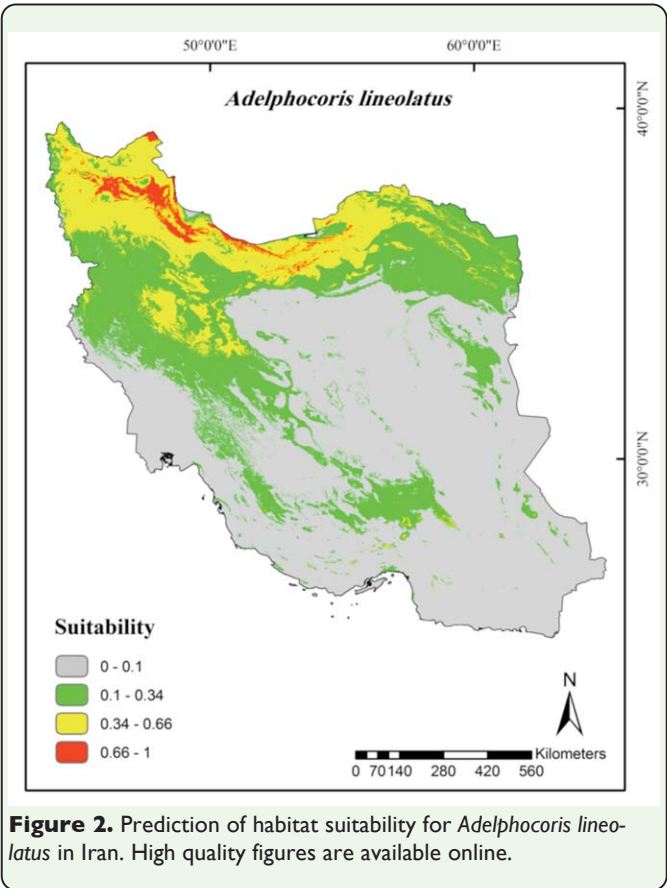
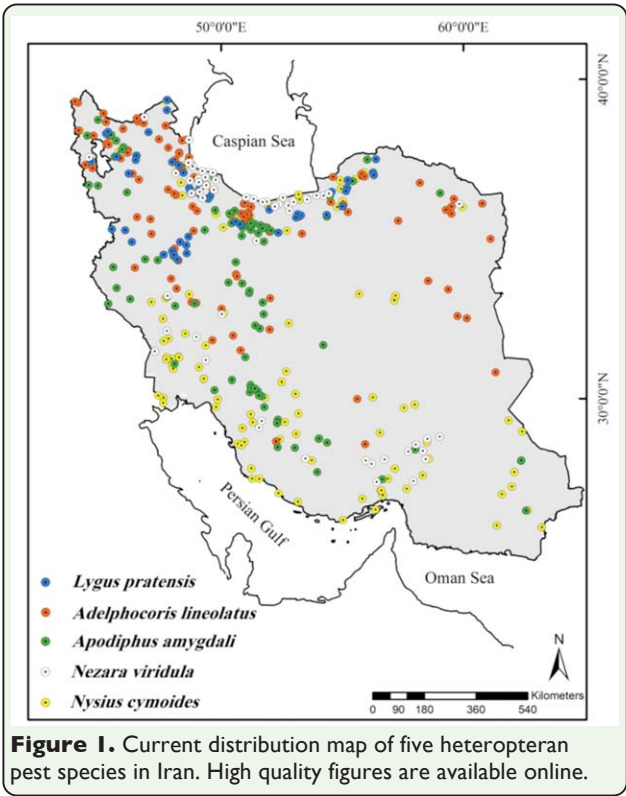
Weirauch C, Schuh RT. 2011. Systematics and Evolution of Heteroptera: 25 Years of Progress. *Journal of Annual Review Entomology* 56: 487–510.

Wheeler Jr. AG. 2001. Plant Bugs (Miridae) as Plant Pests. In: Schaefer CW, Panizzi AR, Editors. *Heteroptera of Economic Importance*. pp. 37–83. CRC Press.

Wilson CD, Roberts D, Reid N. 2011. Applying species distribution modelling to identify areas of high conservation value for endangered species: A case study using *Margaritifera margaritifera* (L.). *Journal of Biological Conservation* 144: 821–829.

Wipfli MS, Wedberg JL, Hogg DB. 1990. Damage potentials of three plant bug (Hemiptera: Heteroptera: Miridae) species to birdsfoot trefoil grown for seed in Wisconsin. *Journal of Economic Entomology* 83: 580–584.

Yasunaga T. 1990. A revision of the genus *Adelphocoris* Reuter (Heteroptera, Miridae) from Japan. *Japan Journal Entomology* 58: 606–618.



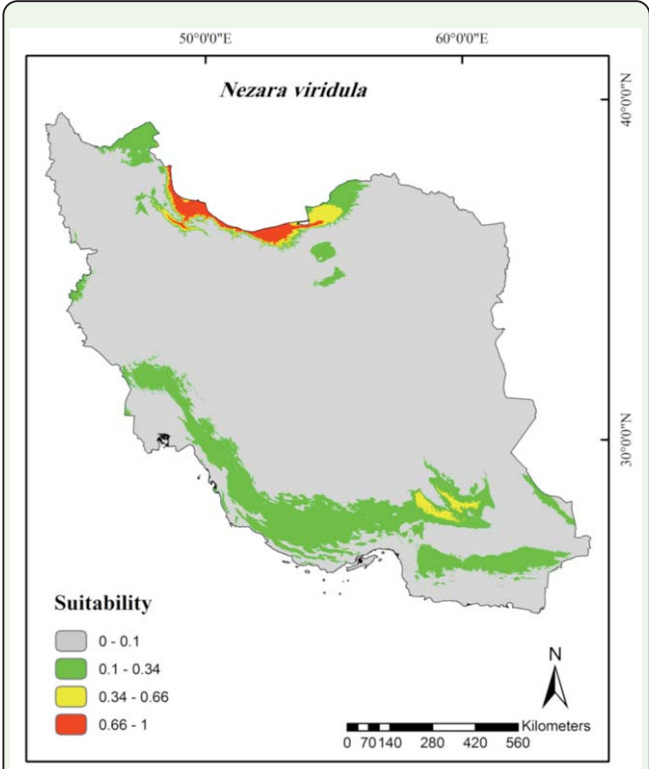


Figure 5. Prediction of habitat suitability for *Nezara viridula* in Iran. High quality figures are available online.

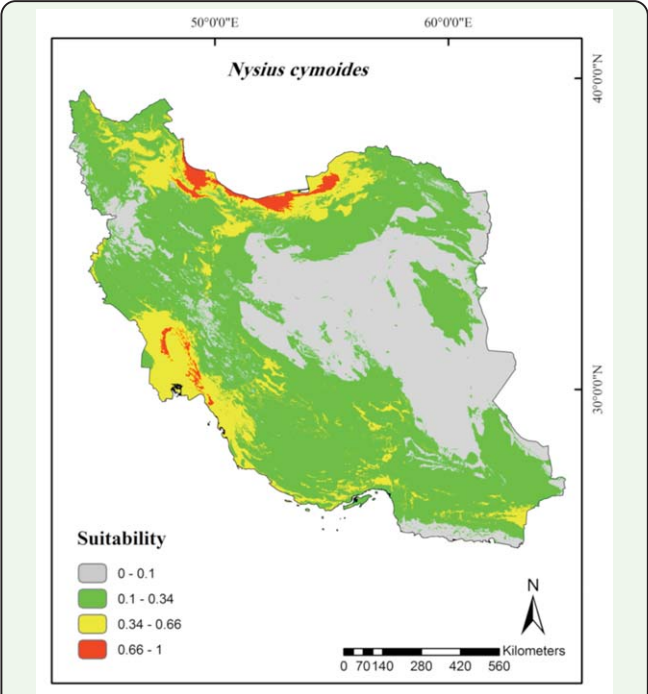


Figure 6. Prediction of habitat suitability for *Nysius cymoides* in Iran. High quality figures are available online.

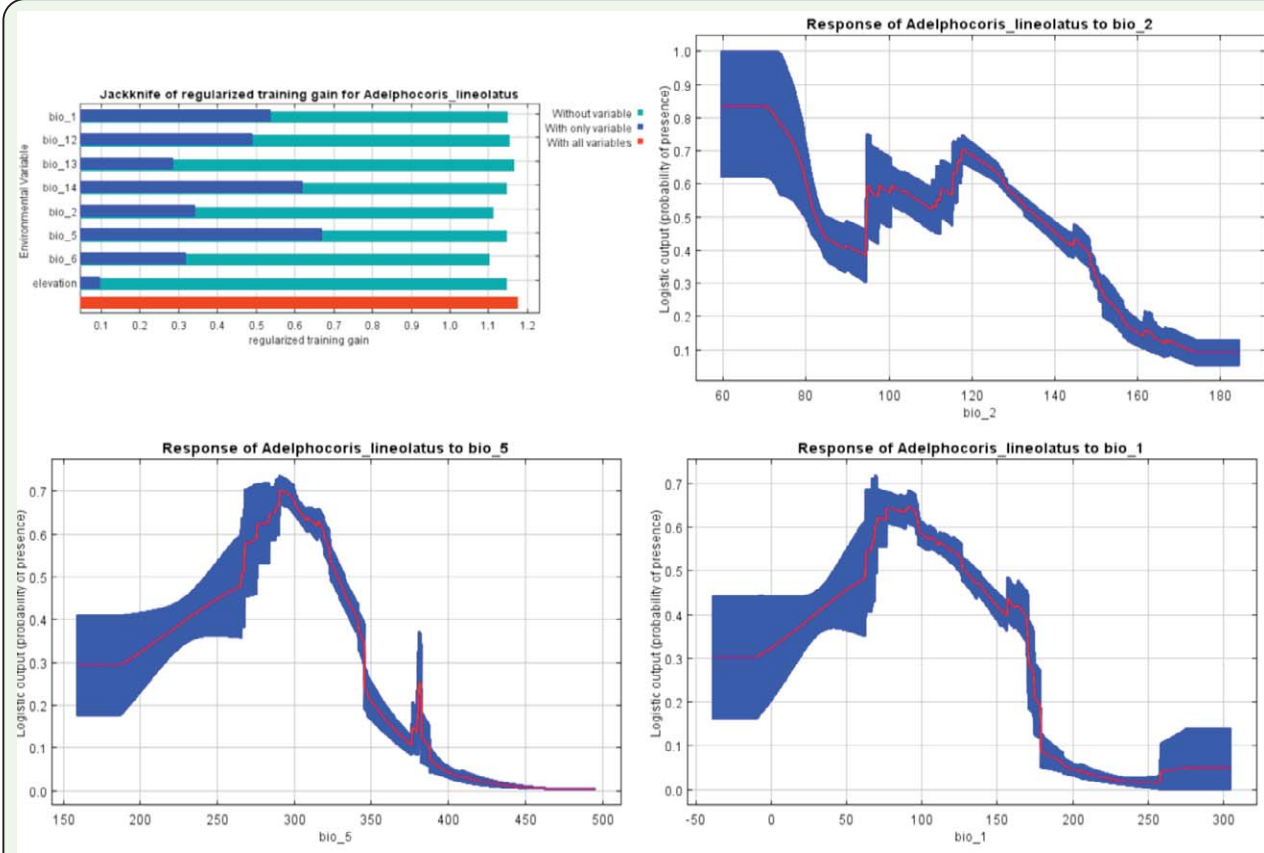


Figure 7. MaxEnt Jackknife tests of the environmental variable importance and marginal response curves of the predicted probability of *Adelphocoris lineolatus* occurrence for explanatory variables that contributed substantially to the Iran MaxEnt model. High quality figures are available online.

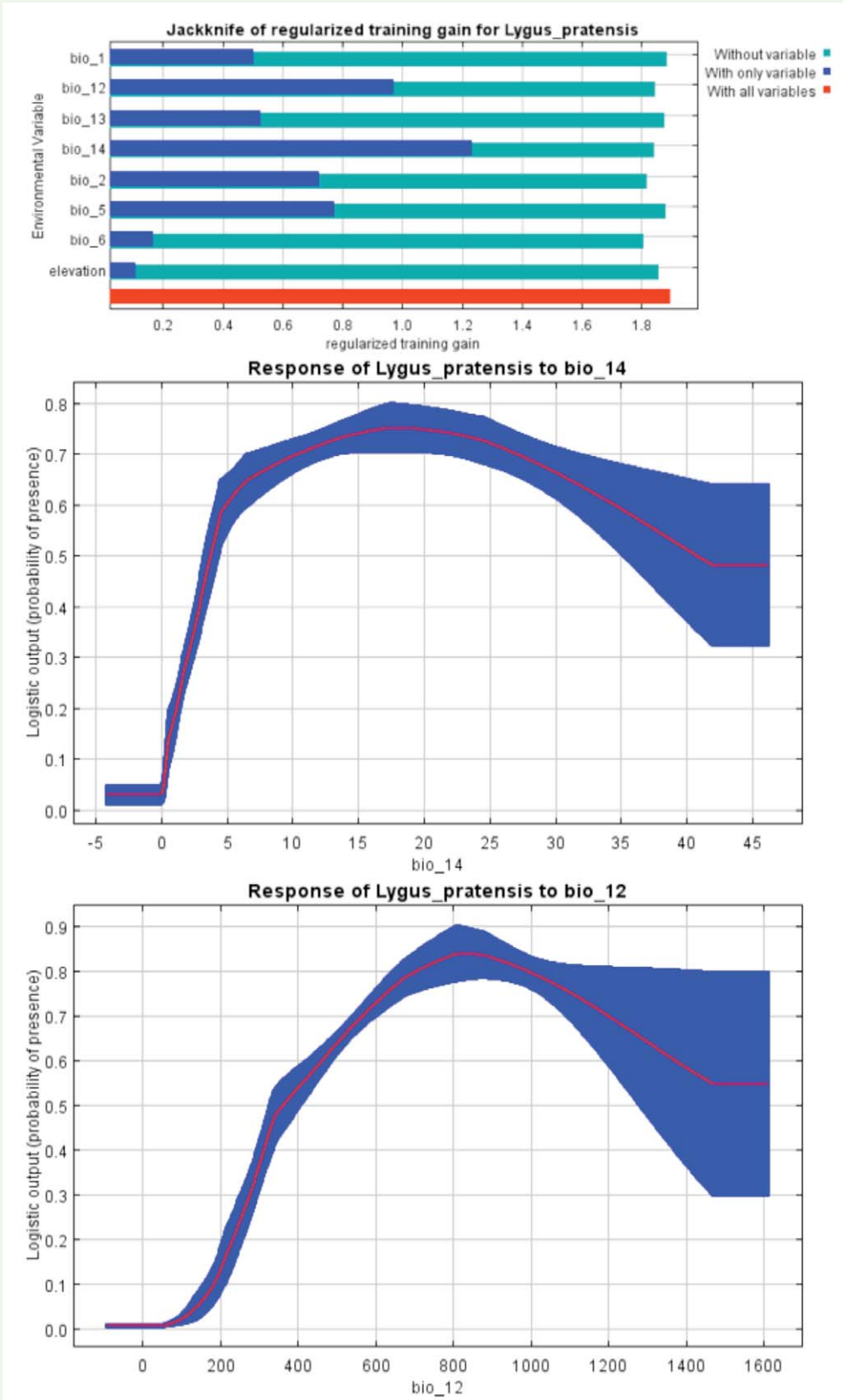
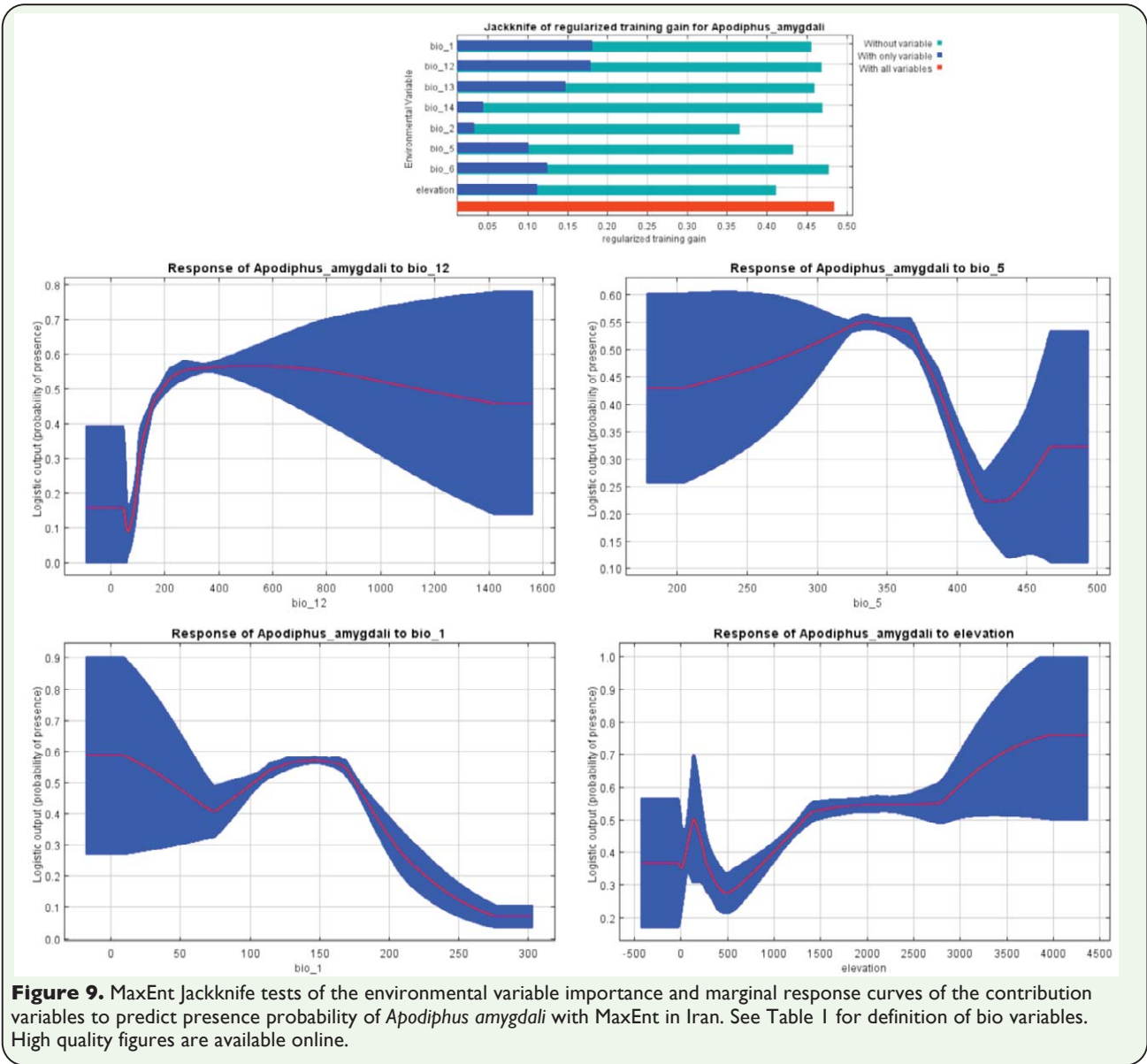


Figure 8. MaxEnt Jackknife tests of the environmental variable importance and marginal response curves of the contribution variables to predict presence probability of *Lygus pratensis* with MaxEnt in Iran. See Table 1 for definition of bio variables. High quality figures are available online.



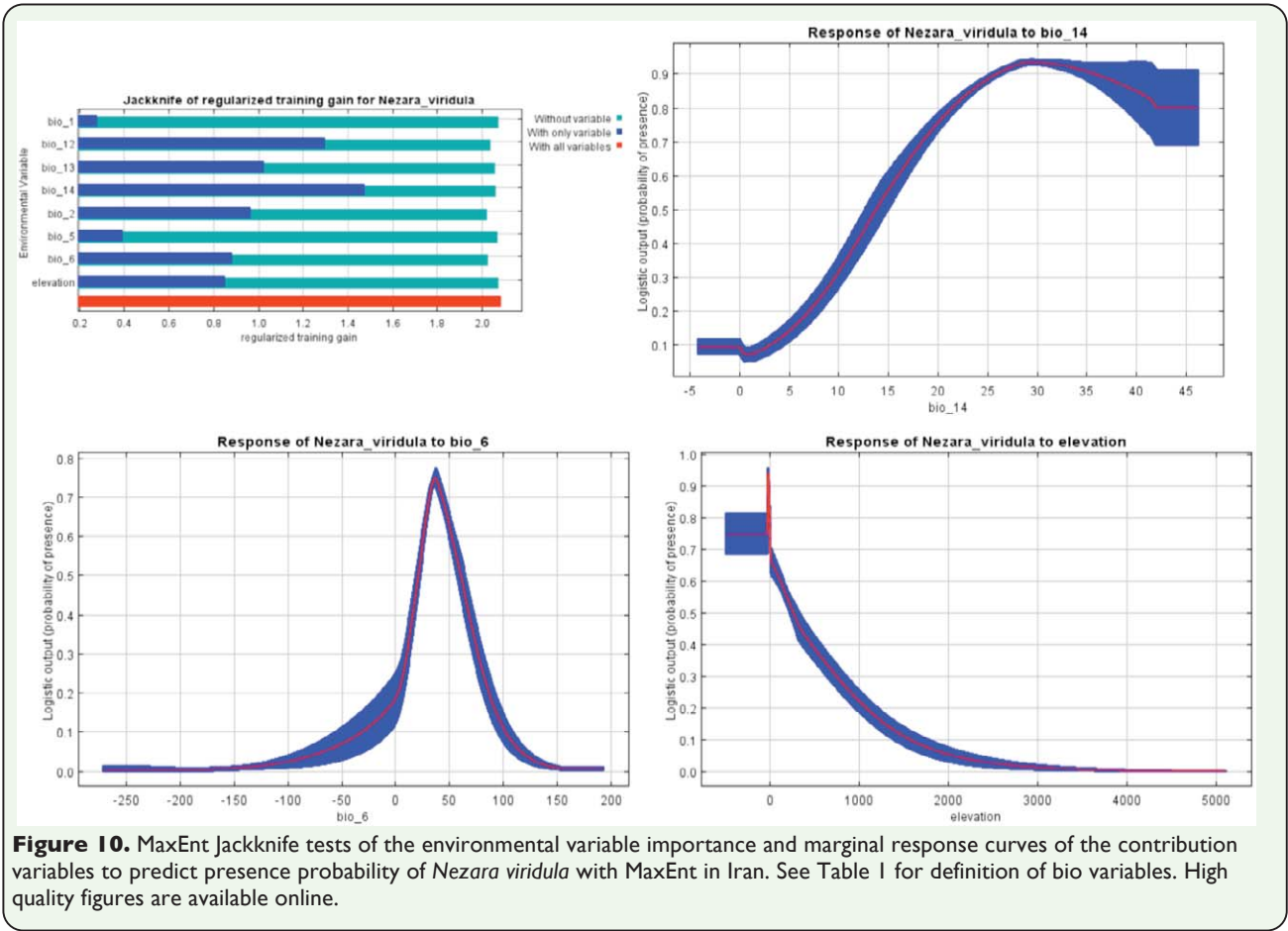


Figure 10. MaxEnt Jackknife tests of the environmental variable importance and marginal response curves of the contribution variables to predict presence probability of *Nezara viridula* with MaxEnt in Iran. See Table 1 for definition of bio variables. High quality figures are available online.

